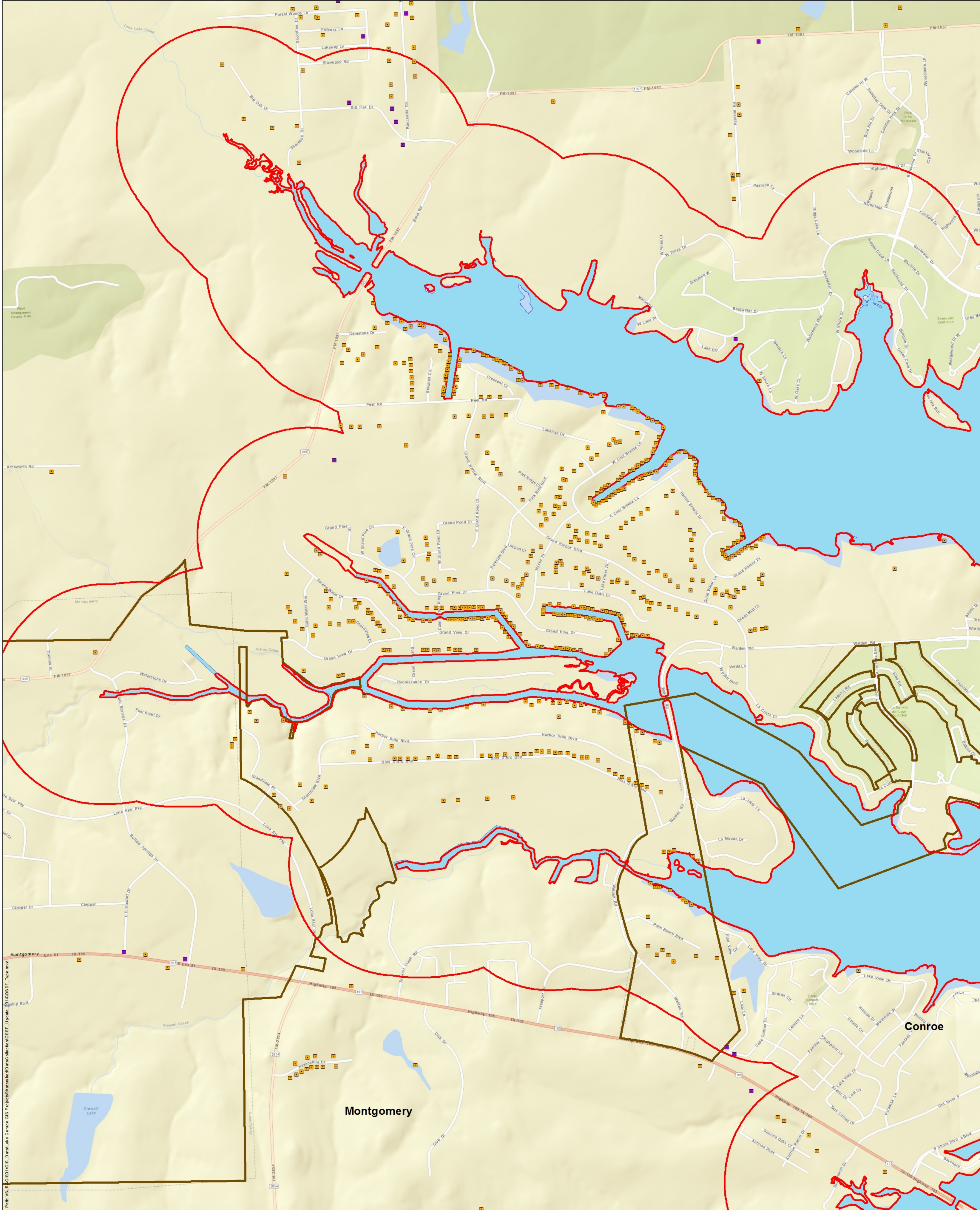


OSSFs in Lake Conroe Watershed (LCW)

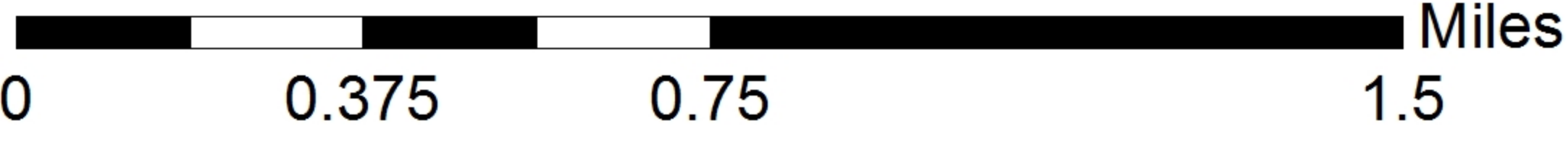
OSSFs in Lake Conroe Watershed (LCW)	Conventional OSSFs	Aerobic Treatment Units	Unknown	Total
SJRA in Montgomery Co.	637	1389	0	2026
Montgomery Co. in LCW	217	913	71	1201
Subtotal	854	2302	71	3227
SJRA in Walker County	23	12	0	35
Walker Co. in LCW	505	966	438	1909
Subtotal	528	978	438	1944
Total OSSF in LCW	1382	3280	509	5171

On Site Septic Systems and System Types

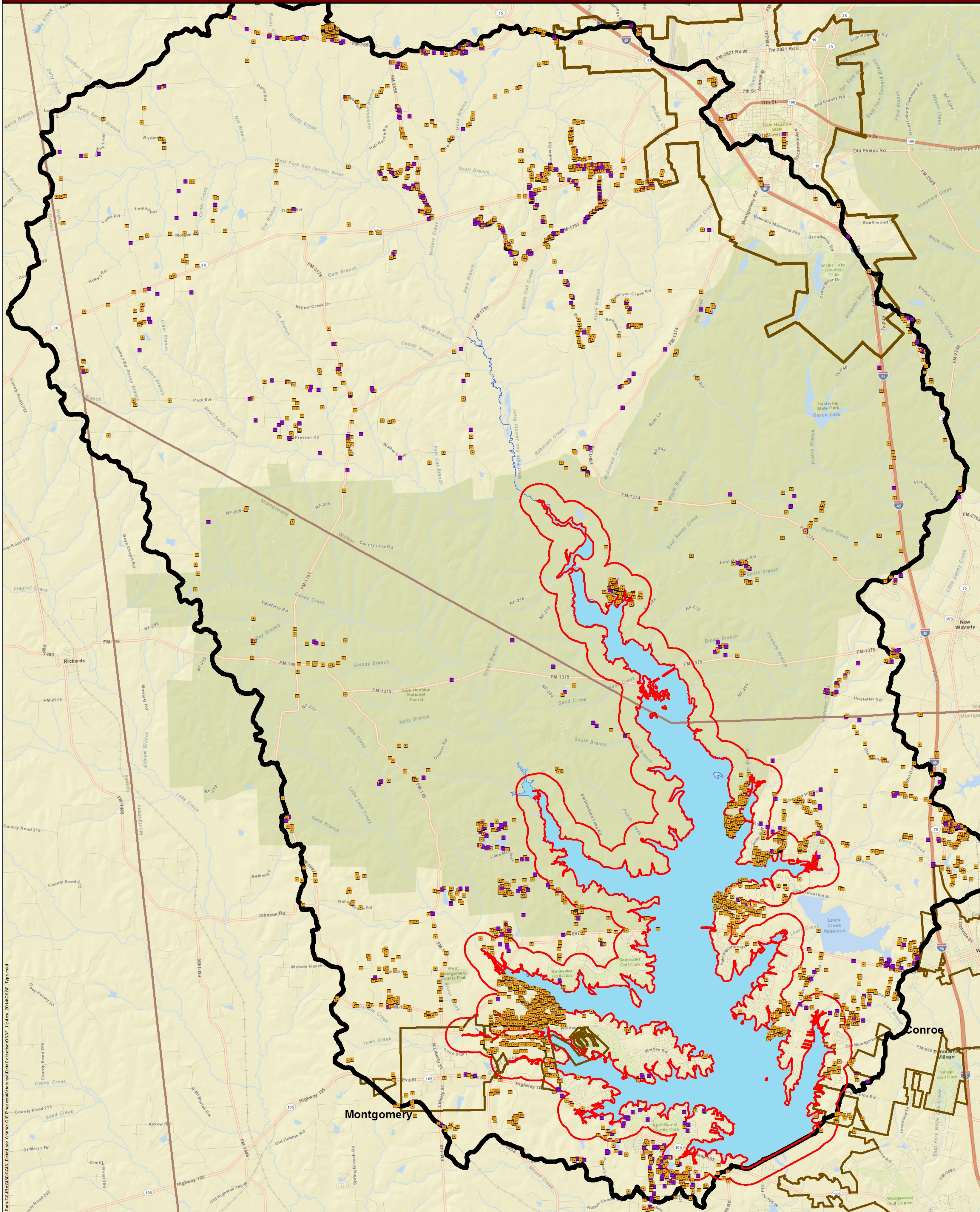


- Total Standard - 763
- Total Aerobic - 3307
- 207ft SJRA jurisdiction

Watershed = 450 Square Miles

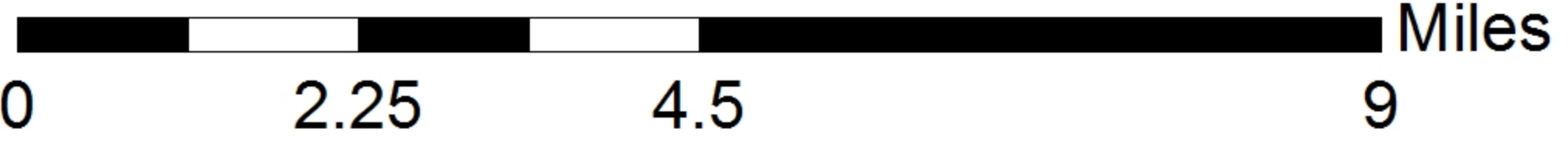


On Site Septic Systems and System Types

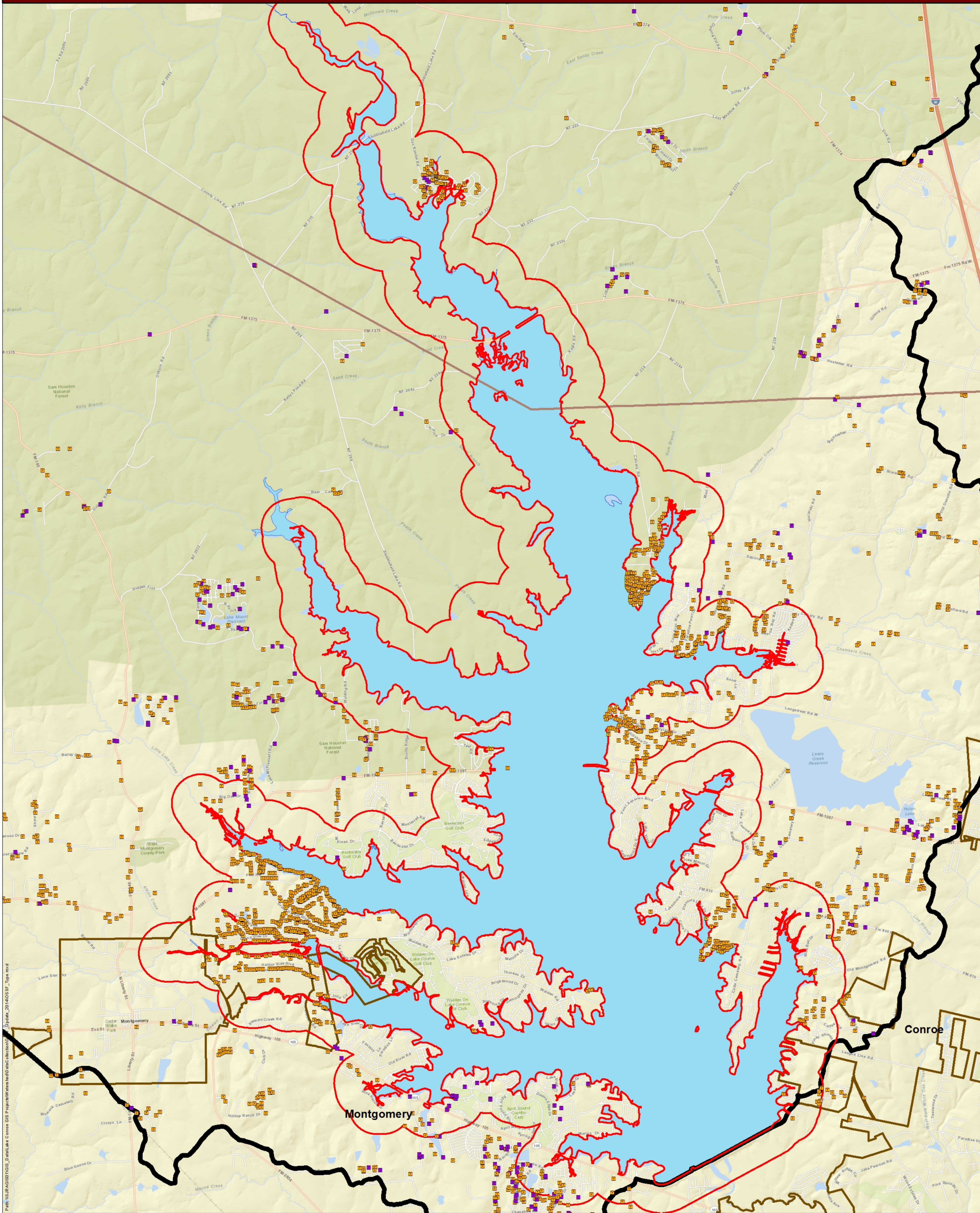


- Total Standard - 763
- Total Aerobic - 3307
- 207ft SJRA jurisdiction

Watershed = 450 Square Miles



On Site Septic Systems and System Types



- Total Standard - 763
- Total Aerobic - 3307
- 207ft SJRA jurisdiction

Watershed = 450 Square Miles

