



GROUNDWATER REDUCTION PLAN PROGRAM

MONTHLY PROGRESS REPORT - MAY, 2015

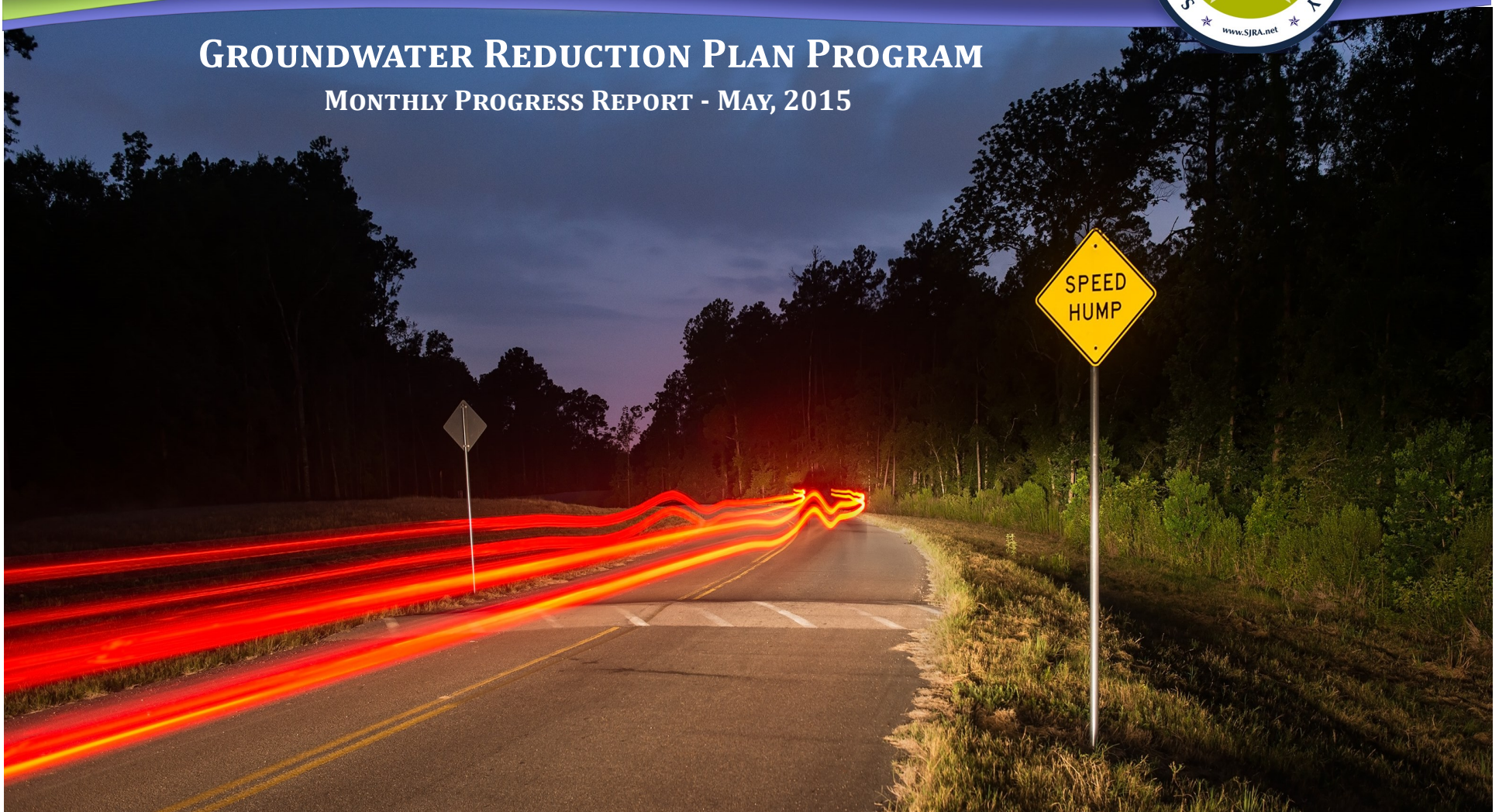


TABLE OF CONTENTS

Table of Contents	1	4.0 Cost Report and Financial Considerations	12
Acronyms and Definitions	2	4.1 GRP Program and GRP Project CIP Budget(s)	12
1.0 Planning	3	4.2 Financial Reports	12
1.1 Strategic	3	4.3 Invoices/Applications for Payment	13
1.2 Engineering and Construction	3	4.4 Contract Amendments and Change Orders	14
1.3 Meetings	3	4.5 Claims	14
2.0 Project Activities	4	4.6 CIP Cash Flow	14
2.1 Engineering	4	4.7 CIP Budget Estimates at Completion	14
2.2 State Agency Coordination	4	4.7.1 GRP Program	14
2.3 Surface Water Transmission System Project Data	5	4.7.2 GRP Projects	14
2.4 Surface Water Transmission System Construction Progress	9	5.0 Quality Assurance	15
2.5 Surface Water Facility Construction Progress and Project Data	10	5.1 Final Design	15
2.6 Facility Improvements	11	5.2 Pre-Construction	15
3.0 Procurement	12	5.3 Construction	15
3.1 Solicitations	12	6.0 Exhibits	16
3.2 Contract Awards	12	7.0 GRP Program Extensions	49
3.3 Process and Procedures	12	7.1 Engineering	49
3.4 Look Ahead	12		



ACRONYMS AND DEFINITIONS

ACRONYMS

CA&I	Construction Administration and Inspection
CCT	Construction Communication Team
CIP	Capital Improvement Project
CM&I	Construction Management and Inspection
CMAR	Construction Manager At Risk
CMT	Construction Materials Testing
CSB / P	Competitive Sealed Bid / Proposal
EA	Environmental Assessment
EAC	Estimate At Completion
FONCS	Fiber Optics Network Communication System
GIS	Geographic Information System
GRP	Groundwater Reduction Plan
GST	Groundwater Storage Tank
HSPS	High Speed Pump Station
LSGCD	Lone Star Groundwater Conservation District
LVGU	Large Volume Groundwater User
NTP	Notice To Proceed
PER	Preliminary Engineering Report
PMP	Program Management Plan
PVC	Polyvinyl Chloride
PSA	Professional Services Agreement
QA	Quality Assurance
RCCP	Reinforced Concrete Cylinder Pipe
RFB / Q / P	Request For Bids / Qualifications / Proposals
RWI / RWPS	Raw Water Intake / Raw Water Pump Station
SJRA	San Jacinto River Authority
SOQ	Statement of Qualifications
SWF	Surface Water Facilities (SWTP, HSPH and RWI)
SWRF	Surface Water Receiving Facilities
SWTP	Surface Water Treatment Plant
TCEQ	Texas Commission on Environmental Quality

DEFINITIONS

TWDB	Texas Water Development Board
TXDOT	Texas Department of Transportation
WIF	Water Infrastructure Fund
GROUNDWATER REDUCTION PLAN (GRP)	The document developed and filed with the LSGCD indicating SJRA's plan to reduce the permitted 2009 groundwater pumpage of its GRP Participants by 30%. The GRP is administered by the SJRA, including any supplements, revisions, or amendments.
GRP PROGRAM TEAM	SJRA staff, Program Management Consultant (Brown & Gay Engineers, Inc.) staff, and technical consultants working interdependently toward meeting the goals of the Groundwater Reduction Plan.
GRP ADMINISTRATOR	The SJRA General Manager's designee who administers the SJRA Groundwater Reduction Plan and GRP Contract with GRP Participants.
GRP CONTRACT	Contract between the SJRA and a Participant to be included in the SJRA's efforts to meet the surface water conversion requirements mandated by the LSGCD.
GRP EXTENSION PROJECTS	Safe harbor related projects not related to Phase 1, but tracked independently of Phase 1.
JOINT GRP	GRP which is prepared to include (takes into account) LVGUs who have executed a GRP Contract with the SJRA to join the SJRA's GRP. Contracted LVGUs obtain LSGCD groundwater reduction regulation compliance through the SJRA's Joint GRP without preparing and submitting a GRP.
LARGE VOLUME GROUNDWATER USER(S) (LVGU)	Any person or entity that, through a single well or a combination of wells, actually produces or is authorized by permit(s) issued by the LSGCD to produce 10 million gallons or more of groundwater annually on or after January 1, 2008.
PARTICIPANT(S)	Regulated User(s) that enters into and remains subject to a written agreement with the SJRA to be included in the SJRA's GRP and includes the legal successors or assigns of Participant(s).
REGULATED USER(S)	Any public or private entity or person that is or becomes subject to the District Regulatory Plan established by the LSGCD and includes any amendments, revisions or supplements thereto as may be adopted by the LSGCD.
SJRA GRP DIVISION	Division of the SJRA responsible for GRP compliance, and the management, administration, operation and maintenance of the surface water facilities and surface water transmission system.



1.0 PLANNING

The GRP Program Team meets regularly for the purposes of setting performance expectations and goals of the GRP Program, identifying the efforts required to achieve these objectives, evaluating the effectiveness of such efforts, and modifying those efforts based upon both internal and external performance evaluations.

1.1 STRATEGIC

During May, work on the GRP start-up plan continued. The GRP Program Team continued looking at closing out contracts on construction that reached final completion. As contracts were closed, remaining funds were reallocated to projects such as the W3C extension to MUD 99, permanent access road, and costs associated with system start-up.

1.2 ENGINEERING AND CONSTRUCTION

All procurement services for construction proposals for Phase I, with the exception of the permanent access road, have been completed and sixteen transmission line construction contracts have been awarded. The engineering consultants will continue to provide construction phase services by reviewing submittals and requests for information as work proceeds.

1.3 MEETINGS

Various meetings continued this month with the GRP Program Team. A listing of these meetings is attached as Exhibit 8.



Staff setting up lab equipment in the Membrane Building

2.0 PROJECT ACTIVITIES

Currently, the GRP Program remains on schedule for the delivery of treated surface water to select Joint GRP Participants on or before January 1, 2016. A simplified GRP Program schedule of remaining work can be found in attached Exhibit 1.

2.1 ENGINEERING

SURFACE WATER TRANSMISSION SYSTEM

Construction Management and Inspection (CM&I) – The CM&I consultant provided management and inspection services for Transmission Segments T1, T2, T3, W1A, W1B, W2A, W2B, W3A, W3B, W3D, W4, C1A, C1B, C2, C3, C4, WRF-N, WRF-S, and the Standpipe.

Construction Materials Testing Consultant (CMT) - CMT consultant is currently working with CM&I staff to perform industry standard construction materials testing on remaining projects.

SURFACE WATER FACILITIES

Permanent Access Road - Design is complete. Engineering consultant work order for construction phase services was approved at the May, 2015 SJRA Board of Directors meeting.

Construction Administration and Inspection (CA&I) – The CA&I consultant for the SWF is currently working with the CMAR and SJRA staff to review submittals and RFI's, and provide constant field monitoring and inspection of the systems being installed.

Construction Materials Testing Consultant (CMT) - The CMT consultant for the SWF is currently working with the CMAR and CA&I staff to perform industry standard construction materials testing on remaining work.

2.2 STATE AGENCY COORDINATION

The Texas Water Development Board (TWDB) completed the field inspection of the Surface Water Facilities and Transmission Line construction sites on May 28, 2015. TWDB conducted their final site visits for Transmission Line Segments T1 and T2. The next site visits are scheduled to occur in September, 2015. TWDB approved requests for release of retainage for the Operations Building and partial release of retainage for Transmission Line Segment

W1A. TWDB approved the project closeout change order for Transmission Line Segment C4.



Inclement weather caused extremely wet conditions



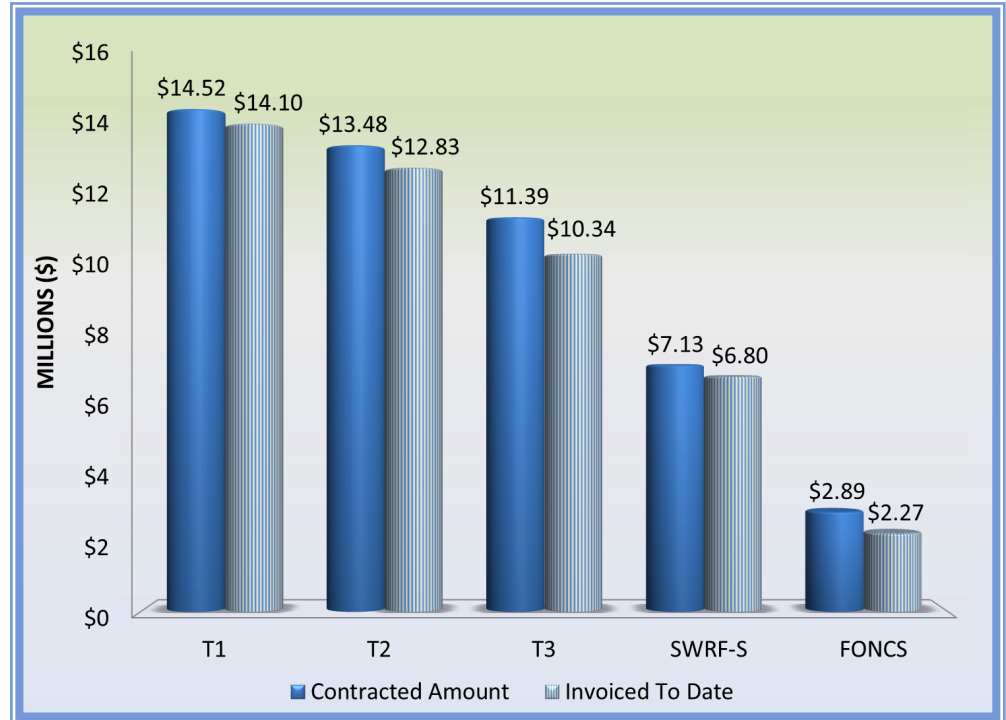
Workers navigating through the muddy conditions

2.0 PROJECT ACTIVITIES (CONTINUED)

2.3 SURFACE WATER TRANSMISSION SYSTEM PROJECT DATA

The month of May concluded with the installation of approximately 277,255 feet or 52.5 miles of various sized concrete coated steel pipe, PVC pipe, and bar wrapped concrete mortar pipe along the majority of the transmission line segments. This represents approximately 99% of the total planned pipe to be installed throughout Montgomery County on or before January 1, 2016. The following graphs and charts show the progress of Transmission Line Segments T1, T2, T3, W1A, W1B, W2A, W2B, W3A, W3B, W3D, W4, C1A, C1B, C2, C3, C4, Surface Water Transmission North Water Receiving Facilities (SWRF-N), Surface Water Transmission South Water Receiving Facilities (SWRF-S), Standpipe, and Fiber Optics Network Communication System (FONCS) thus far.

**Erected walls
at the
Maintenance
Building**



Surface Water Transmission System Total	Progress To Date
Total Contracted Amount	\$150,137,397.07
Total Invoiced To Date	\$139,998,393.79
Total % Complete Based on Invoice Amount	93%

Segment	T1	T2	T3	SWRF-S	FONCS
Contracted Amount	\$14,521,937.14	\$13,475,718.33	\$11,393,193.97	\$7,127,383.00	\$2,885,432.35
Invoiced To Date	\$14,097,492.64	\$12,825,963.20	\$10,338,118.34	\$6,800,844.57	\$2,268,067.25
% Complete	97%	95%	91%	94%	79%

2.0 PROJECT ACTIVITIES (CONTINUED)

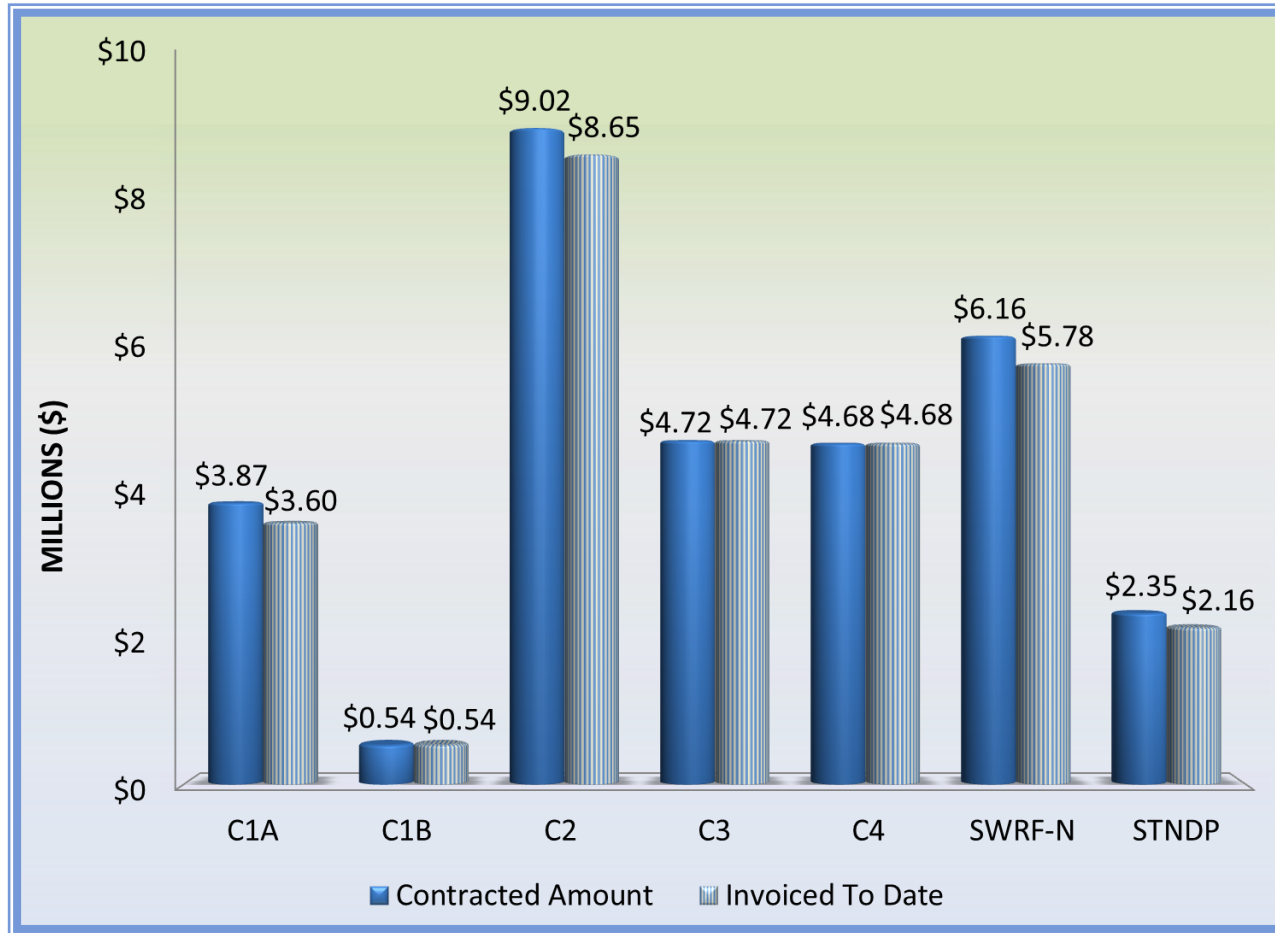


Segment	W1A	W1B	W2A	W2B	W3A	W3B	W3D	W4
Contracted Amount	*\$8,177,136.35	\$7,213,544.50	\$16,340,258.02	\$16,161,600.00	\$7,880,207.50	\$8,114,716.70	\$1,840,986.00	\$3,656,604.23
Invoiced To Date	\$7,740,806.66	\$6,754,717.01	\$15,272,089.82	\$14,875,816.49	\$7,532,196.60	\$7,681,953.90	\$374,315.30	\$3,395,122.67
% Complete	95%	94%	93%	92%	96%	95%	20%	93%

*Includes Board approved changed orders that will not be reflected in Exhibit 6 until approved by Texas Water Development Board

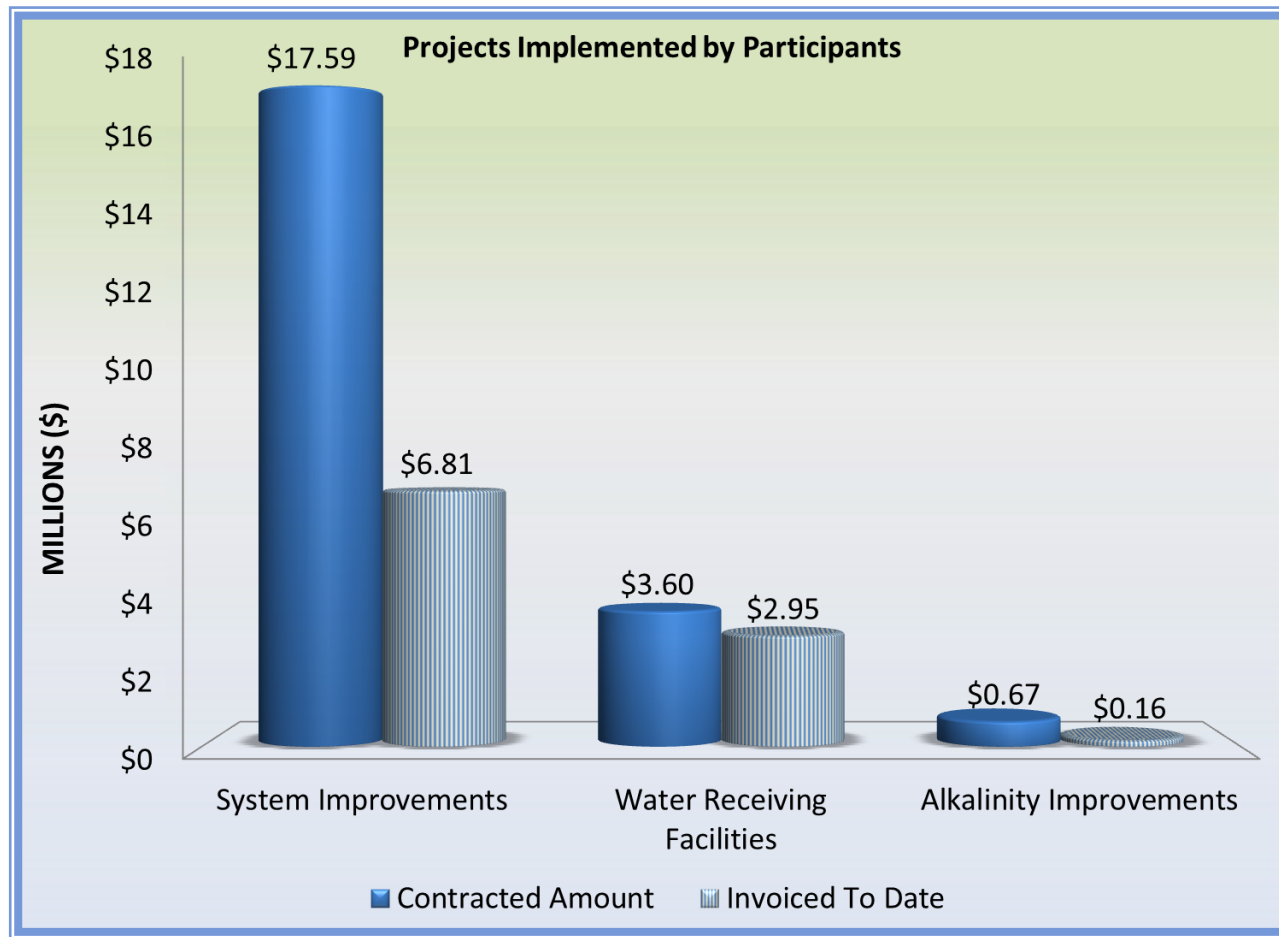


2.0 PROJECT ACTIVITIES (CONTINUED)



Segment	C1A	C1B	C2	C3	C4	SWRF-N	STANDPIPE
Contracted Amount	\$3,869,767.26	\$544,393.60	\$9,015,577.30	\$4,720,966.14	\$4,683,615.13	\$6,160,184.55	\$2,354,175.00
Invoiced To Date	\$3,596,844.75	\$544,393.60	\$8,653,034.80	\$4,720,966.14	\$4,683,615.13	\$5,781,672.60	\$2,156,902.00
% Complete	93%	100%	96%	100%	100%	94%	92%

2.0 PROJECT ACTIVITIES (CONTINUED)



Project	System Improvements	Water Receiving Facilities	Alkalinity Improvements
Contracted Amount	\$17,593,931.55	\$3,603,916.98	\$674,997.00
Invoiced To Date	\$6,805,185.96	\$2,950,346.08	\$164,669.00
% Complete	39%	82%	24%

2.0 PROJECT ACTIVITIES (CONTINUED)

2.4 SURFACE WATER TRANSMISSION SYSTEM CONSTRUCTION PROGRESS

Significant progress continues to be made each month with regard to pipe installation on each of the sixteen Surface Water Transmission Line Segments. The chart below represents the overall pipe installation statistics through the month of May.

Transmission Line System Pipe Installation Statistics to Date	
Total Piping Installed to Date	52.5 miles
Total % of Pipe Installed to Date	99%

Segment T1 - Final completion inspection was held this month, and the Contractor addressed final punchlist items.

Segment T2 - Final completion inspection was held this month, and the Contractor addressed final punchlist items.

Segment T3 - Contractor cleaned approximately 119 feet of the interior side of the 54-inch waterline. A partial internal inspection took place and approval was received. Contractor installed air release valves, flushing hydrants, and temporary piping at SJRA's Water Plant No. 4 in preparation for the 54-inch hydrostatic pressure test that began at Research Forest and FM 2978 moving north along the waterline. Contractor continued to install 1,360 feet of 3-inch fiber optic conduit.

Segment W3A - Contractor continued to finalize close-out documents.

Segment W3B - Approximately 24,000 of the 25,349 feet of 3-inch fiber optic conduit was installed. Contractor continued to perform hydrostatic pressure testing on the 20-inch waterline from IH-45 to Spring Ridge Drive. Contractor continued to address hydrostatic pressure testing on the 16-inch waterline that runs to Southern Montgomery County MUD's Water Plant No. 3.

Segment W3D - Contractor installed the 16-inch waterline along Maplewood from Castlewood Drive just south of Hillside Drive. Contractor began the installation of flushing hydrants and to sawcut the concrete pavement at Robinson and Maplewood for restoration. Contractor installed 16-inch pipe by horizontal direction drill (HDD) method along Maplewood Drive south of Hillside. Contractor installed additional asphalt pavement where the bore and receiving pits were installed.

Segment C2 - Contractor continued to perform site restoration along the waterline. Contractor began disinfection process and poured concrete collars around manholes, valves, and flushing hydrants.

Standpipe - No new activity to report this month. (See Exhibit 11)

Fiber Optic Communications System - Contractor completed their installation of fiber optic cable along Research Forest to the intersection of Segments W2A and W2B near Grogans Mill Road and Research Forest Drive. Contractor continued to perform end-to-end tests on all of the rough-in fiber optic segments. Several tests were completed between each of the Water Receiving Facilities in the Woodlands and Conroe.

SURFACE WATER RECEIVING FACILITIES

Surface Water Receiving Facilities - North - No new activity. Awaiting the delivery of water from the Surface Water Facility.

Surface Water Receiving Facilities - South - The substantial completion inspection was held this month, and the Contractor is addressing punchlist items.

2.0 PROJECT ACTIVITIES (CONTINUED)



Workers working on the Chemical trench at the Surface Water Treatment Facility

2.5 SURFACE WATER FACILITY CONSTRUCTION PROGRESS AND PROJECT DATA

Raw Water Intake - The air burst system was started. Contractor continued working towards substantial completion.

Surface Water Treatment Plant - Construction activities continued at the Operations, Chemical, Power Supply, Generator, Pretreatment, Membrane, Backwash Equalization, Process Water Recovery Basin, Belt Filter Press Building, Blower Building, and Granular Activated Carbon (GAC) facilities. Testing and commissioning the electrical and mechanical equipment continued at the various facilities. The GAC media installation was completed and backwashing of the contactors began. Disinfection activities began throughout the SWF including the GSTs and GAC contactors. Contractor began to flush membrane racks and perform start-up activities. Fiber communications were tested. Generator load testing was completed and operated via manual controls. A site quality walk was held with engi-

neers, SJRA staff, and various contractors. A preliminary list of quality items to be addressed was identified and distributed.

High Service Pump Station - Contractor performed start-up tests and installed air compressor pipe for High Service Pump Nos. 1 and 4. Contractor continued to install conduit and to pull wire for the pump room.

Ground Storage Tanks - Contractor pulled wire for the tank instruments and the power on the tank roof. At the Pressure Relief Valve Station, the Contractor continued to install pressure relief valve conduit, terminal boxes, and supports.

Site Work - Contractor placed concrete at various locations, including the sidewalk west of the Membrane Building and the truck loading pad and curb at the Chemical Building. Contractor began clearing along the fence line and began the installation of the site perimeter fence. The removal of the temporary fence along the toe of the dam road was started. Contractor continued to perform sanitary and drain line tests. Contractor continued to install the chemical trench and associated chemical and sample pipe at various locations. The chemical and sample pipe were encased with concrete along the dam slope. The placement of trench covers and backfill adjacent to the trenches continued.

Name of Project	Contracted Amount	Invoiced To Date	% Complete Based on Invoice
Surface Water	\$190,704,740.00	\$180,544,623.00	95%

2.0 PROJECT ACTIVITIES (CONTINUED)

2.6 FACILITY IMPROVEMENTS

Various projects are being implemented by GRP Participants on behalf of the GRP. These include system improvements that are required, due to the delivery of surface water to the Participants' water receiving facilities and improvements at their wastewater treatment plants, to address differences in alkalinity of surface water based wastewater.

SYSTEM IMPROVEMENTS

Conroe Water Distribution - A Supplemental Agreement was approved on November 11, 2013 whereby the GRP will reimburse the City of Conroe for water system improvements needed for the distribution of surface water throughout the City's water system. The chart below reflects the status of the City's water system improvements:

Water Plant (WP)	Completion
WP No. 6 (Northwest)	23.7%
WP No. 14 (Wedgewood)	4.1%
WP No. 15 (Silver Springs)	2.8%
WP No. 20 (Pollock)	15.0%
WP No. 21 (Little Egypt)	11.3%
WP No. 22 (FM 3083)	11.4%

16-inch Well Collection Line from Woodlands WW9 and WW10 - Final closeout documents were processed. Project was completed.

College Park 16-inch Well Collection Line and 12-inch Water Line Loop - Final closeout documents were processed. Project was completed.

WATER RECEIVING FACILITIES

Oak Ridge North Water Plant - The City of Oak Ridge North's portion of this project is complete. Waiting for tie-in of SJRA waterline.

Rayford Road MUD Water Plants - The Installation of the remote terminal unit (RTU) panels began this month. Final piping installation and electrical connections continued. Site clean-up and restoration continued.

Mid-South Water Plant - The programmable logic controller (PLC) panel was installed. Wiring was pulled and terminated between the PLC panels. Signal wiring was pulled to all instruments. The chlorine injection system is 75% complete.

ALKALINITY IMPROVEMENTS

Woodlands Alkalinity Improvements - Alternative methods continued to be investigated.

Southern Montgomery County (SMC) MUD - A Supplemental Agreement with SMC MUD was approved by the SJRA Board on October 30, 2014. The construction plans and engineering report were submitted to the City of Houston for review. Construction plans were submitted for a proposed driveway encroachment review. Technical specifications are being finalized.



Surface Water Facility operator inspecting sludge floc produced during start-up and commissioning of the Surface Water Treatment Facility

3.0 PROCUREMENT

3.1 SOLICITATIONS

The following advertisements for solicitations occurred for May:

- No solicitations occurred for this month.

3.2 CONTRACTS/AGREEMENTS/WORK ORDER APPROVALS

The following contracts/agreements/work orders were approved in May:

- Construction contract for access road for the GRP Program
- Work Order No. 7 for Construction Phase Services during construction of access road
- Work Order No. 6 for Construction Materials Testing during construction of access road
- Interlocal Agreement with Montgomery County for land acquisition

3.3 PROCESS AND PROCEDURES

The GRP Program will utilize traditional procurement methods for consultant services and alternative project delivery methods in the procurement of contractor services, if those services are required.

3.4 LOOK AHEAD

The following list provides a very general look ahead at known and anticipated GRP Program professional services and construction contractor solicitations, contract awards, agreements, and/or contract/work order amendments. Solicitations may be combined, modified, or canceled, or time frames may be modified as deemed necessary.

- Proposed amended Rate Order for GRP Participants
- Change Order No. 1 to consider contractor for Fiber Optic Network communications system
- Amendment No. 1 to Work Order No. 16 for Final Transient Analysis
- Amendment No. 2 to Work Order No. 2 for Construction Management and Inspection Services for the Surface Water Transmission System
- Change Order to Close Out Construction Contract for Surface Water Transmission Line Segment W2B
- Change Order to Close Out Construction Contract for Surface Water Transmission Line Segment W3A

4.0 COST REPORT AND FINANCIAL CONSIDERATIONS

4.1 GRP PROGRAM AND GRP PROJECT CIP BUDGET(S)

Through this month the GRP Program remains under its construction cost estimate of \$500,000,000 and forecasts continue to indicate it will be completed under budget (see also subsection 4.6 and **Exhibit 2**). A summary of the GRP Program's CIP budget and cost considerations as reported to the GRP Review Committee and the SJRA Board of Directors is provided as attached **Exhibit 2**.

A summary of the SJRA GRP Division's Fiscal Year 2015 operating budget (revenue and expenditures) for the month of May is provided as **Exhibit 7**. The budget includes all normal and customary expenses for operating a utility-based, non-profit business, including debt service, and is developed annually for approval by the SJRA Board of Directors.

The SJRA Board of Directors has authorized bond funding for the GRP Program in the amount of \$552,250,358.49 (Net \$479,746,021.87); see also **Exhibit 4**. This funding allows the SJRA to secure all of the resources required to perform professional services, construction services, and procure long lead time equipment during the design phase of the GRP Program.

4.2 FINANCIAL REPORTS

Exhibit 5 illustrates the funding sources presently applied towards the GRP Program CIP budget.

- 1.) TWDB Water Infrastructure Fund (WIF)
- 2.) The sale of open market Special Project Revenue Bonds, Series 2011
- 3.) TWDB Dfund, Series 2011A
- 4.) TWDB Dfund, Series 2012
- 5.) TWDB Dfund, Series 2012A
- 6.) TWDB Dfund, Series 2013
- 7.) Operating Cash

Contracted commitments are summarized in Table 4.1 for the month of May. The GRP Program's funding and forecasted expenditures are further detailed in attached **Exhibits 2, 3, and 4**.

Please note that financial reports do not include investment income.



4.0 COST REPORT AND FINANCIAL CONSIDERATIONS

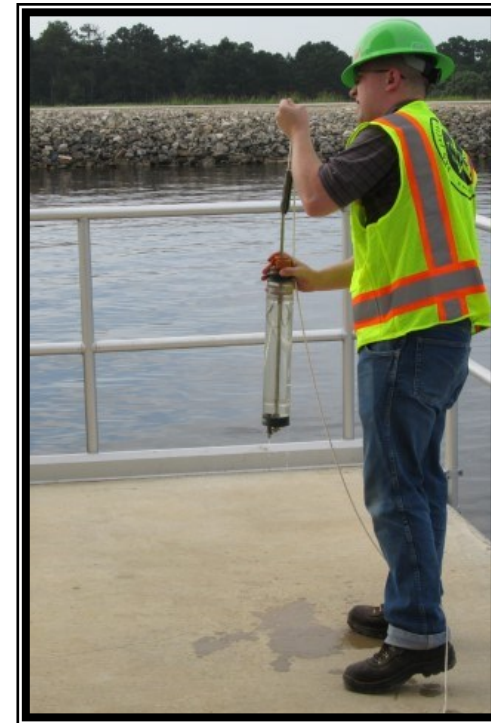
4.3 INVOICES/APPLICATIONS FOR PAYMENT

The tables below represents the GRP Program Consultant Invoices and/or Construction Contractor Applications for Payment paid through the end of the report month (Item F).

Table 4.1 - GRP Program Funding and Contracted Commitments Summary			
	Previous 4/30/2015	May 2015 Activity	Year to Date (Thru 5/31/15)
A. Approved Funding	552,644,126.17	248.16	552,644,374.33
B. Available Funding After Costs	480,139,789.55	248.16	480,140,037.71
C. Approved Contracts			
Phase I	473,835,097.88	(184,833.62)	473,650,264.26
Extensions	1,069,835.00	-	1,069,835.00
D. Project Close Out			
Phase I	(1,869,902.58)	(35.47)	(1,869,938.05)
Extensions	-	-	-
E. Uncontracted Funding	7,104,759.25	185,117.25	7,289,876.50
F. Invoices Paid *			
Phase I	412,211,158.04	3,329,922.36	415,541,080.40
Extensions	318,138.58	186,711.68	504,850.26
G. Remaining Funds **	67,610,492.93	(3,516,385.88)	64,094,107.05

*Invoices Paid -Figures reflect actual funds paid out as of period end dates noted.

**Remaining Funds-Excludes net investment income



Raw water sampling at the Raw Water Intake

4.0 COST REPORT AND FINANCIAL CONSIDERATIONS (CONTINUED)

4.4 CONTRACT AMENDMENTS AND CHANGE ORDERS

Each of the GRP Program contracts, agreements, and work orders listed in Section 3.2 were presented at the GRP Review Committee and the SJRA Board of Directors meetings in May. The following items were authorized by the SJRA Board of Directors for execution by the SJRA General Manager.

- Work Order No. 7 for Construction Phase Services during construction of access road
- Work Order No. 6 for Construction Materials Testing during construction of access road
- Amendment No. 3 to Work Order No. 1 for Professional Construction Administration and Inspection Services for the Surface Water Facility
- Change Order No. 3 for Construction of Surface Water Transmission Line Segment W1A and for Flushing and Disinfection Assistance of the entire Surface Water Transmission System
- Work Authorization Amendment No. 5 for Construction Manager at Risk for the Surface Water Facility.

4.5 CLAIMS

If and when claims are received, they will be addressed by the GRP Program Team. SJRA reserves the right to withhold certain claims information that is subject to ongoing investigation, pending or threatened litigation, or covered by attorney-client privilege.

4.6 CIP CASH FLOW

The GRP Program CIP cash flow through calendar year 2015 reflects known expenditures through this month as seen in Table 4.1. Estimates for future expenditures are included in [Exhibit 2](#). All active and currently identified future GRP Program projects and initiatives are included in the cash flow. A graph of forecasted monthly expenditures from the referenced cash flow is attached as [Exhibit 3](#).

4.7 CIP BUDGET ESTIMATES AT COMPLETION

4.7.1 GRP Program

The **total gross funds** (including capitalized interest) required to execute Phase I of the GRP Program are currently estimated at \$552,250,358.49. Additionally, all current GRP Program contracts, including their respective SJRA Board of Director's approved budgeted amounts are listed in [Exhibit 6](#).

4.7.2 GRP Projects

The GRP Program projects remained within their approved contract budgets this month. [Exhibit 6](#) indicates each active GRP Program project and GRP Program contract.



Workers processing mechanical piping at the Granular Activated Carbon (GAC) Building

5.0 QUALITY ASSURANCE

5.1 FINAL DESIGN

Final design is complete for Surface Water Treatment Plant, Transmission Lines, Standpipe, Fiber Optic Communications Network, and Water Receiving Facilities. Design of the permanent access road was completed.

5.2 PRE-CONSTRUCTION

There were no pre-construction meetings held this month.

5.3 CONSTRUCTION

Quality Assurance efforts by SJRA construction inspectors, as well as the CA&I consultant continued this month on the SWF project. Virtually every building on the SWF project site is progressing timely toward meeting the established SWF substantial completion date. Quality Assurance efforts include regular visits to the project site to monitor and document observed progress. Similar Quality Assurance efforts by SJRA construction inspectors and the CM&I consultant continued this month on the transmission lines.



*Above—SCADA staff checking out the various systems
Left—SCADA staff checking out and troubleshooting the system
Bottom—Risk Management Fund representative
appraising facilities for insurance purposes*

6.0 EXHIBITS

Exhibit 1—GRP Program Schedule

Exhibit 2—GRP Program Estimate-At-Completion

Exhibit 3—GRP Program Monthly Forecasted Expenditures

Exhibit 4—GRP Program Fund Data

Exhibit 5—Monthly GRP Program Funding Report

Exhibit 6—GRP Program Current Authorizations

Exhibit 7—GRP Schedule of Revenues & Expenses—Actual & Budget

Exhibit 8—GRP Program Monthly Meeting Log

Exhibit 9—Surface Water Facilities (SWF) Construction Photos

Exhibit 10—Transmission Line System Construction Photos

Exhibit 11—Surface Water Standpipe Construction Photos

Exhibit 12—Facility Improvements by GRP Participants Photos

Exhibit 13—Fiber Optic Network Communication System



*Left—Facility signage at the Standpipe
Above— Aerial view of the Standpipe*

Exhibit 1 - GRP Program Schedule

ID	Task Name	2012					2013					2014					2015																
		Jun	Jul	Aug	Sep	Oct	Nov	Dec	Jan	Feb	Mar	Apr	May	Jun	Jul	Aug	Sep	Oct	Nov	Dec	Jan	Feb	Mar	Apr	May	Jun	Jul	Aug	Sep	Oct	Nov	Dec	Jan
1	Transmission Segment W3D																																
2	Construction																																
3	Water Treatment Plant																																
4	Construction																																
5	High Service Pump Station																																
6	Construction																																
7	Raw Water Intake & Pump Station																																
8	Construction																																
9	Water Treatment Facilities Permanent Access Road																																
10	Design																																
11	Procurement																																
12	Construction																																



Exhibit 2

GRP Program Estimate-At-Completion as of May 31, 2015

Pre-Engineering Phase Services	\$ 4,696,451
(GRP Development, Environmental Studies, Pilot Plant, Surface Water Treatment Plant Site Survey)	
Engineering Phase Services	\$ 45,232,596
(Planning, Preliminary Engineering, Final Engineering, Geotechnical, Survey, Metes & Bounds, Subsurface Utility Investigation, Environmental)	
Construction Phase Services	\$ 29,748,586
(Engineering Services During Construction, Construction Management & Inspection [Transmission System], Construction Administration & Inspection [SWF], Material Testing)	
Construction	\$ 376,672,891
(Surface Water Transmission System, Raw Water Intake and Pump Station, Surface Water Treatment Plant, High Service Pump Station and Ground Storage Tanks, Surface Water Receiving Facilities, Infrastructure, Buildings, Roadways, Site Security, Access Roadways)	
Transmission Segment C1 - Construction	\$ 4,414,161
Transmission Segment C2 - Construction	\$ 9,015,577
Transmission Segment C3 - Construction	\$ 4,720,966
Transmission Segment C4 - Construction	\$ 4,683,615
Transmission Segment T1 - Construction	\$ 14,521,937
Transmission Segment T2 - Construction	\$ 13,475,718
Transmission Segment T3 - Construction	\$ 11,593,194
Transmission Segment W1 - Construction ⁽²⁾	\$ 15,435,545
Transmission Segment W2 - Construction ⁽²⁾	\$ 32,501,858
Transmission Segment W3 - Construction	\$ 15,994,924
Transmission Segment W4 - Construction	\$ 3,656,604
Transmission System Standpipe	\$ 2,354,175
Receiving Facilities - Construction	\$ 15,039,812
Surface Water Facilities CMAR (GMP)	\$ 190,704,740
Transmission System Fiber Optic - Construction	\$ 2,985,432
Permanent Access Roadway Construction	\$ -
Building No. 1; Access Road; Vegetative Buffer; Construction Materials Testing; SWF Site Vegetation Management; Sanitary Sewer/Access Rd. Relocation	\$ 4,469,037
Other Offsite Construction (Transmission Line Utility Relocations, Receiving Facility Improvements)	\$ 30,274,473
Non-Project Specific Contingency	\$ 831,122
Program Management	\$ 10,990,772
(GRP Program Management, Survey, Geotechnical, Transient, Corrosion, Legal Consultants)	
Land Acquisition	\$ 12,404,726
(Legal, Appraisal, Title Research, Land Acquisition Consultants) ⁽¹⁾	
Total⁽³⁾:	\$ 479,746,022

⁽¹⁾ Includes revisions to land acquisition cost estimates, land cost, and recategorizing of contingency.

⁽²⁾ Includes pending final closeout change order amounts.

⁽³⁾ Bond issuance costs are not included.

Exhibit 3

GRP Program Monthly Forecasted Expenditures as of May 31, 2015

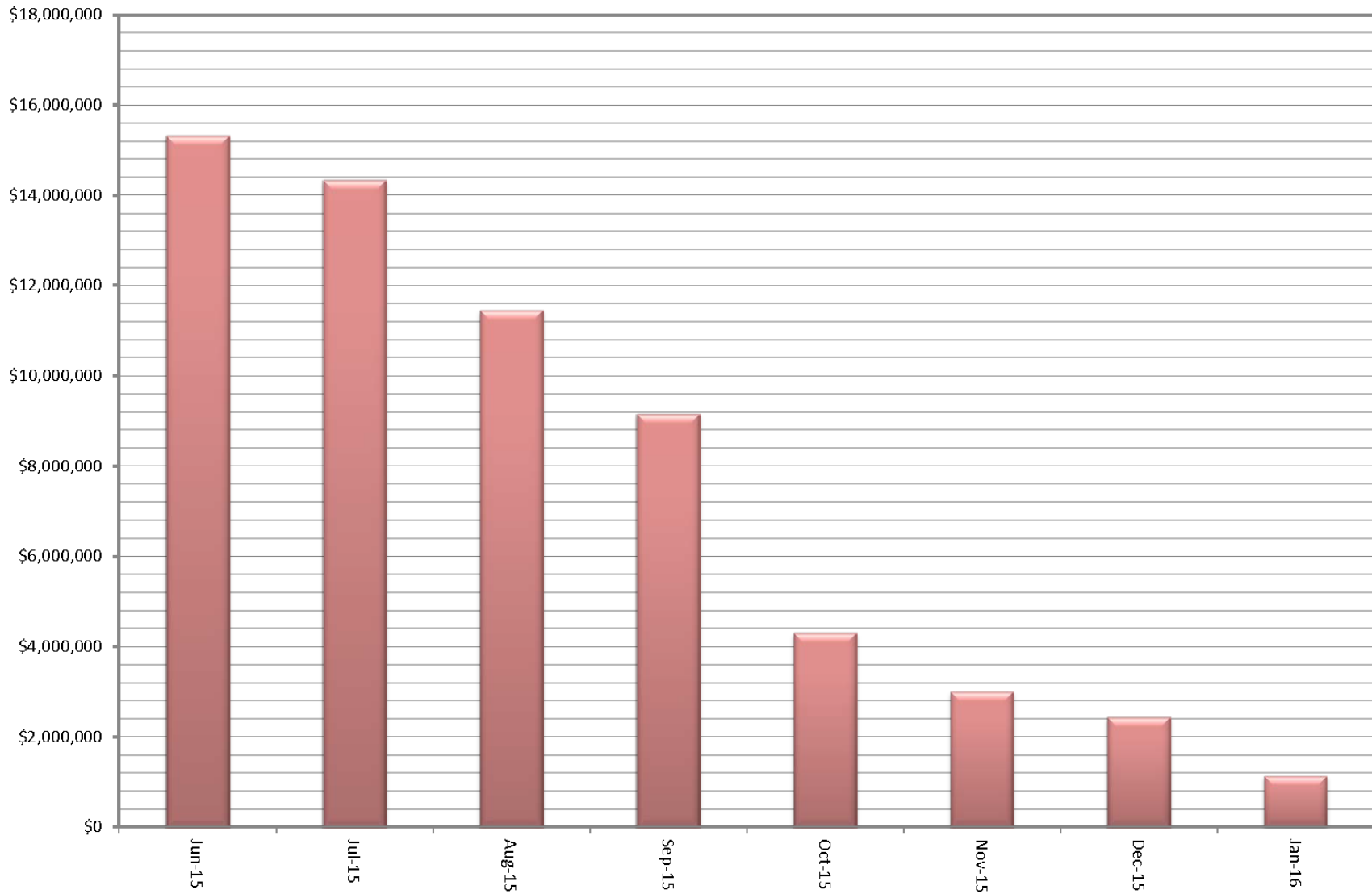


Exhibit 4

GRP Program Fund Data as of May 31, 2015

Funding Source	Amount Authorized by Board To-Date	Interest Rate	Bond Costs	Capitalized Interest	Debt Service Reserve Fund	Net Amount Currently Available
TWDB WIF Bond Issue	\$ 21,500,000.00	.854% - 2.706%	\$ 470,337.08	\$ -	\$ -	\$ 21,029,662.92
Open Market Bond Issue (Series 2011)	\$ 83,430,358.49	3% - 5.25%	\$ 2,049,764.39	\$ 7,858,241.52	\$ -	\$ 73,522,352.58
TWDB DFund Series 2011A	\$ 67,470,000.00	1.22% - 4.97%	\$ 751,195.33	\$ 5,166,233.00	\$ 3,859,151.00	\$ 57,693,420.67
TWDB DFund Series 2012	\$ 175,000,000.00	1.17% - 4.62%	\$ 971,769.13	\$ 12,869,175.00	\$ -	\$ 161,159,055.87
TWDB DFund Series 2012A	\$ 165,000,000.00	1.26% - 4.62%	\$ 952,269.99	\$ 14,139,669.00	\$ 16,500,000.00	\$ 133,408,061.01
TWDB Dfund Series 2013	\$ 39,850,000.00	4.50%	\$ 628,750.00	\$ 3,214,292.00	\$ 3,073,489.18	\$ 32,933,468.82
Totals	\$ 552,250,358.49	\$ 0.05	\$ 5,824,085.92	\$ 43,247,610.52	\$ 23,432,640.18	\$ 479,746,021.87

Notes:

1. These values do not include investment income.
2. Series 2011 bond costs include \$681,132.45 for bond insurance and \$459,709.50 for underwriter's discount.



Exhibit 5

Monthly GRP Program Funding Report

Fiscal Year 2015

Through May 31, 2015

	TWDB WIF Bond Issue	Open Market Bond Issue (Series 2011)	TWDB Dfund (Series 2011A)	TWDB Dfund (Series 2012)	TWDB Dfund (Series 2012A)	TWDB Dfund (Series 2013)	Operating (Cash)	Contributions from MUDs	Totals
A. Program Budget									
Bond Issue Amount	\$ 21,500,000.00	\$ 83,430,358.49	\$ 67,470,000.00	\$ 175,000,000.00	\$ 165,000,000.00	\$ 39,850,000.00			\$ 552,250,358.49
Operating Funds Commitment							\$ 100,015.84		\$ 100,015.84
Contributions from MUDs								\$ 294,000.00	\$ 294,000.00
Total Investment	\$ 21,500,000.00	\$ 83,430,358.49	\$ 67,470,000.00	\$ 175,000,000.00	\$ 165,000,000.00	\$ 39,850,000.00	\$ 100,015.84	\$ 294,000.00	\$ 552,644,374.33
B. Contracted Costs									
Phase I									
Contracts Completed	\$ 20,355,197.84	\$ 27,490,084.71	\$ 15,329,995.20	\$ -	\$ 7,661,089.10	\$ 3,721,564.70	\$ 16,157.80	\$ -	\$ 74,574,089.35
Current Contract Values	\$ 655,944.00	\$ 33,155,421.00	\$ 41,277,860.46	\$ 161,159,055.87	\$ 123,237,657.71	\$ 28,763,182.48	\$ 83,862.16	\$ -	\$ 388,332,983.68
Change Orders	\$ -	\$ 8,172,910.36	\$ 1,042,864.32	\$ -	\$ 1,968,967.12	\$ (441,550.57)	\$ -	\$ -	\$ 10,743,191.23
Project Close Out	\$ (354,198.43)	\$ (986,180.24)	\$ (213,554.73)	\$ -	\$ (315,975.38)	\$ (25.15)	\$ (4.12)	\$ -	\$ (1,869,938.05)
Phase I Total:	\$ 20,656,943.41	\$ 67,832,235.83	\$ 57,437,165.25	\$ 161,159,055.87	\$ 132,551,738.55	\$ 32,043,171.46	\$ 100,015.84	\$ -	\$ 471,780,326.21
Extensions									
Contracts Completed	\$ -	\$ 10,175.00	\$ -	\$ -	\$ -	\$ -	\$ -	\$ -	\$ 10,175.00
Current Contract Values	\$ -	\$ 1,059,660.00	\$ -	\$ -	\$ -	\$ -	\$ -	\$ -	\$ 1,059,660.00
Change Orders	\$ -	\$ -	\$ -	\$ -	\$ -	\$ -	\$ -	\$ -	\$ -
Project Close Out	\$ -	\$ -	\$ -	\$ -	\$ -	\$ -	\$ -	\$ -	\$ -
Extensions Total:	\$ -	\$ 1,069,835.00	\$ -	\$ -	\$ -	\$ -	\$ -	\$ -	\$ 1,069,835.00
C. Expenditures									
Phase I									
Paid Previous Fiscal Years	\$ 20,599,416.62	\$ 49,618,248.03	\$ 40,595,829.88	\$ 109,374,040.69	\$ 91,422,085.04	\$ 12,922,461.97	\$ 84,942.42	\$ -	\$ 324,617,024.65
Paid Current Fiscal Year	\$ 14,160.00	\$ 7,657,637.91	\$ 11,428,562.36	\$ 32,590,668.94	\$ 24,685,821.48	\$ 14,537,650.41	\$ 9,554.65	\$ -	\$ 90,924,055.75
Phase I Total:	\$ 20,613,576.62	\$ 57,275,885.94	\$ 52,024,392.24	\$ 141,964,709.63	\$ 116,107,906.52	\$ 27,460,112.38	\$ 94,497.07	\$ -	\$ 415,541,080.40
Extensions									
Paid Previous Fiscal Years	\$ -	\$ 172,033.34	\$ -	\$ -	\$ -	\$ -	\$ -	\$ -	\$ 172,033.34
Paid Current Fiscal Year	\$ -	\$ 332,816.92	\$ -	\$ -	\$ -	\$ -	\$ -	\$ -	\$ 332,816.92
Extensions Total:	\$ -	\$ 504,850.26	\$ -	\$ -	\$ -	\$ -	\$ -	\$ -	\$ 504,850.26
Issuance Costs	\$ 470,337.08	\$ 2,049,764.39	\$ 751,195.33	\$ 971,769.13	\$ 952,269.99	\$ 628,750.00	\$ -	\$ -	\$ 5,824,085.92
Debt Service Reserve Fund	\$ -	\$ -	\$ 3,859,151.00	\$ -	\$ 16,500,000.00	\$ 3,073,489.18	\$ -	\$ -	\$ 23,432,640.18
Capitalized Interest	\$ -	\$ 7,858,241.52	\$ 5,166,233.00	\$ 12,869,175.00	\$ 14,139,669.00	\$ 3,214,292.00	\$ -	\$ -	\$ 43,247,610.52
D. Remaining									
Uncontracted Funds	\$ 372,719.51	\$ 4,620,281.75	\$ 256,255.42	\$ (0.00)	\$ 856,322.46	\$ 890,297.36	\$ (0.00)	\$ 294,000.00	\$ 7,289,876.50
Funding Balance *	\$ 416,086.30	\$ 15,741,616.38	\$ 5,669,028.43	\$ 19,194,346.24	\$ 17,300,154.49	\$ 5,473,356.44	\$ 5,518.77	\$ 294,000.00	\$ 64,094,107.05

*Excluding net investment income



Exhibit 6

GRP Program Current Authorizations as of May 31, 2015

Surface Water Transmission System - Consultant Services

Project	Firm	Amount Authorized by Board
T1	Jones & Carter	\$ 2,166,221.02
T2	Klotz Associates	\$ 1,822,718.66
T3	Espey	\$ 1,892,282.82
W1	LAN	\$ 2,469,560.65
W2	Binkley & Barfield	\$ 3,311,241.40
W3	Cobb Fendley	\$ 3,938,336.96
W4	LJA	\$ 1,009,006.98
C1	Dannenbaum	\$ 891,000.68
C2	Schaumburg & Polk	\$ 2,211,922.28
C3	Kimley Horn	\$ 1,238,749.53
C4	RG Miller	\$ 597,788.37
Fiber Optic	EMA	\$ 1,062,569.67
WRFs	Malcom Pirnie/Arcadis	\$ 2,680,366.57
CM&I	Kellog Brown & Root	\$ 8,657,135.48
Subtotal - Surface Water Transmission System		\$ 33,948,901.07

Surface Water Facilities - Consultant Services

Project	Firm	Amount Authorized by Board
WTP	HDR Engineering	\$ 19,382,334.64
HSPS	AECOM	\$ 5,455,218.39
StandPipe	AECOM	\$ 192,235.38
RWI&PS	Freese & Nichols	\$ 3,929,369.64
CA&I	CDMSmith	\$ 5,632,169.83
Subtotal - Surface Water Facilities		\$ 34,591,327.88

Program Consultant Services & Other Projects

Project	Firm	Amount Authorized by Board
Program Management	Brown & Gay	\$ 10,695,226.55
Program Survey	Landtech	\$ 553,621.50
Program Geotechnical	Raba Kistner	\$ 145,260.00
Prog Transient Analyses	AECOM	\$ 5,647,453.77
Access Rd/Misc Service	ACES	\$ 857,366.25
SWF Surveying	S&V Surveying	\$ 66,875.00
Land Acq	KDM	\$ 427,940.62
Land Acq	PAS	\$ 1,150,481.70
Program Environmental	Half Associates	\$ 1,063,698.87
Program Fiber Optics	EMA	\$ 1,062,569.67
Program Corrosion	V&A Consulting Engineers	\$ 866,676.00
Program Legal Services & Projects	Multiple	\$ 4,832,165.41
Subtotal - Program Consultant Services & Other Projects		\$ 27,369,335.34



Exhibit 6 (con't)

GRP Program Current Authorizations as of May 31, 2015

Surface Water Transmission System Extensions - Consultant Services

Project	Firm	Amount Authorized by Board
MUD99/115	IDS Engineering Group - x	\$ 470,720.00
MUD99/115	Andrews & Kurth - x	\$ 100,000.00
MUD99/115	PAS - x	\$ 200,000.00
MUD99/115	Arcadis - x	\$ 36,843.00
MUD99/115	V&A Consulting Engineers - x	\$ 41,256.00
MUD99/115	Brown & Gay - x	\$ 121,216.00
Subtotal - Surface Water Transmission System Extensions		\$ 970,035.00

Active or Completed Construction Contracts Managed by GRP

Project	Firm	Amount Authorized by Board
GRP Bldg No. 1	Brookstone	\$ 2,008,673.00
Bldg No. 1/Aqua Tx CMT	Aviles Engineering	\$ 64,343.15
Landscape Buffer	Key-Scape Landscape	\$ 53,090.00
Temp Access Road	Lindsey Construction	\$ 977,583.60
Access Road CMT	Terracon Consultants	\$ 10,359.70
Access Road Overlay and Detention	AAA Asphalt	\$ 412,284.59
Access Road Landscape	TreeScapes	\$ 34,165.00
Aqua Texas Sewer	Randy Roan Construction	\$ 547,341.17
Bldg No. 1 Fiber Line	Preferred Technologies	\$ 231,157.56
Surface Water Plant (CMAR)	McCarthy	\$ 190,704,740.00
SWF CMT	Geotest	\$ 2,011,748.65
Transmission Sytem Utility Relocations	Various	\$ 2,062,614.14
Transmission System CMT (T3, W1, W2, W3, W4)	Aviles	\$ 1,851,330.00
Transmission System CMT (T1, T2, C1, C2, C3, C4)	Terracon	\$ 756,711.25
Transmission Segment T1	S.J. Louis Construction of Texas Ltd	\$ 14,521,937.14
Transmission Segment T2	Texas Sterling Construction Company	\$ 13,475,718.33
Transmission Segment T3	S.J. Louis Construction of Texas Ltd	\$ 11,393,193.97
Transmission Segment C1A	Garney Companies, Inc.	\$ 3,869,767.26
Transmission Segment C1B	E.P. Brady, LTD.	\$ 544,393.60
Transmission Segment C2	Garney Companies, Inc.	\$ 9,015,577.30
Transmission Segment C3	E.P. Brady, LTD.	\$ 4,720,966.14
Transmission Segment C4	BRH-Garver Construction, L.P.	\$ 4,683,615.13
Transmission Segment W1A	Huff & Mitchell, Inc.	\$ 8,222,000.50
Transmission Segment W1B	Texas Sterling Construction Company	\$ 7,213,544.50
Transmission Segment W2A	Texas Sterling Construction Company	\$ 16,340,258.02
Transmission Segment W2B	Texas Sterling Construction Company	\$ 16,161,600.00
Transmission Segment W3A	Huff & Mitchell, Inc.	\$ 7,880,207.50



Exhibit 6 (con't)

GRP Program Current Authorizations as of May 31, 2015

Project	Firm	Amount Authorized by Board
Transmission Segment W3B	Garney Companies, Inc.	\$ 8,114,716.70
Transmission Segment W3D	Alcott, Inc. (TCH)	\$ 1,840,986.00
Transmission Segment W4	Huff & Mitchell, Inc.	\$ 3,656,604.23
Receiving Facilities South	CSA	\$ 7,127,383.00
Receiving Facilities North	Archer Western	\$ 6,160,184.55
Transmission SCADA - Fiber Optic Construction	Fisk Electric Company	\$ 2,885,432.35
Standpipe	CSA	\$ 2,354,175.00
Miscellaneous	Other Construction Contracts, Permits, Fees, etc.	\$ 233,666.23
Subtotal - Construction Contracts		\$ 352,142,069.26

Active or Completed Engineering/Construction Contracts Managed by Participants

Project	Participant	Amount Authorized by Board
Distribution and Well Collection Lines	Woodlands Water	\$ 4,641,684.55
Distribution and Water Plants Improvements	City of Conroe Water	\$ 12,952,247.00
Receiving Facilities	Rayford Road MUD Water	\$ 1,752,244.00
Receiving Facilities	City of Oak Ridge North Water	\$ 506,844.00
MSEC Receiving Facility and Distr. System Imp.	MSEC	\$ 1,344,828.98
Wastewater Alkalinity Improvements	Southern Montgomery County MUD Wastewater	\$ 455,975.00
Wastewater Alkalinity Improvements	Woodlands Wastewater	\$ 219,022.00
Subtotal -Engineering/Construction Managed by Participants		\$ 21,872,845.53

Totals

	Amount Authorized by Board
Surface Water Transmission System - Consultant Services	\$ 33,948,901.07
Surface Water Facilities - Consultant Services	\$ 34,591,327.88
Program Consultant Services & Other Projects	\$ 27,369,335.34
Surface Water Transmission System Extensions - Consultant Services	\$ 970,035.00
Active or Completed Construction Contracts	\$ 352,142,069.26
Engineering/Construction Managed by Participants	\$ 21,872,845.53
Total	\$ 470,894,514.08

Exhibit 7

San Jacinto River Authority Groundwater Reduction Plan

Schedule of Revenues & Expenses—Actual and Budget

For Nine Months Ending May 31, 2015

	May	Fiscal Year To Date				Fiscal Budget	
	Actual	Actual	Budget	Variance	% Variance	Total Year Budget	Actual YTD % of Total Year Budget
OPERATING REVENUES							
GRP pumping fees	\$ 2,518,186	\$ 24,548,809	\$ 31,046,128	\$ (6,497,319)	(21%)	\$ 41,992,101	58%
GRP Surface Water Sales	-	-	253,420	(253,420)	(100%)	4,942,463	0%
TOTAL OPERATING REVENUES	\$ 2,518,186	\$ 24,548,809	\$ 31,299,548	\$ (6,750,739)	(22%)	\$ 46,934,564	52%
OPERATING EXPENSES							
Payroll & employee benefit expenses	\$ 404,298	\$ 3,289,145	\$ 3,754,105	\$ 464,960	12%	\$ 5,108,247	64%
Professional fees	512	152,188	417,600	265,412	64%	556,800	27%
Purchased & contracted services	17,008	129,040	230,799	101,759	44%	307,732	42%
Supplies, materials & utilities	56,725	1,638,752	5,141,884	3,503,132	68%	6,815,340	24%
Maintenance repairs, parts & rentals	2,741	9,029	59,250	50,221	85%	105,750	9%
General & administration	65,065	468,545	709,746	241,201	34%	946,329	50%
TOTAL OPERATING EXPENSES	\$ 546,350	\$ 5,686,699	\$ 10,313,384	\$ 4,626,685	45%	\$ 13,840,198	41%
NON-OPERATING REVENUES & EXPENSES							
Interest on investments	\$ 33,329	\$ 308,178	\$ 149,760	\$ 158,418	106%	\$ 199,680	154%
Other revenues	-	1,950	-	1,950	100%	-	0%
Interest expense	(1,769,346)	(15,942,270)	(15,942,272)	2	(0%)	(21,360,309)	75%
TOTAL NON-OPERATING (EXCLUDING ITEMS NOT BUDGETED)	\$ (1,736,017)	\$ (15,632,142)	\$ (15,792,512)	\$ 160,370	(1%)	\$ (21,160,629)	74%
NET INCOME (LOSS) (EXCLUDING ITEMS NOT BUDGETED)	\$ 235,819	\$ 3,229,967	\$ 5,193,652	\$ (1,963,685)	(38%)	\$ 11,933,737	27%
NON-OPERATING REVENUES & EXPENSES (NOT BUDGETED)							
Depreciation	\$ (31,250)	\$ (239,935)	\$ -	\$ (239,935)	100%	\$ -	0%
Amortized debt issuance expense	(6,142)	(3,240)	-	(3,240)	100%	-	0%
TOTAL NON-OPERATING (NOT BUDGETED)	\$ (37,392)	\$ (243,175)	\$ -	\$ (243,175)	100%	\$ -	0%
NET INCOME (LOSS) (BUDGETED AND NOT BUDGETED)	\$ 198,427	\$ 2,986,793	\$ 5,193,652	\$ (2,206,859)	(42%)	\$ 11,933,737	25%



Exhibit 7 (con't)

GRP Division

Clarification of Actual & Budget Variances

For Nine Months Ending May 31, 2015

Category	YTD - Driver	May 2015	FYTD 2015
GRP Pumping Fees	Usage variance due to abnormally wet weather conditions and change in consumer behavior. This trend began in FY2014 and has continued if not intensified, into FY2015. If the trend persists, pumpage and surface water rates may be impacted in future fiscal years.	(2,202)	(6,751)
Payroll and related expenses	Budgeted positions not filled as scheduled.	(4)	465
Professional Fees	Professional fees less than budgeted.	45	265
Purchased & Contracted Services	Purchased and contracted services less than budgeted.	9	102
Supplies, Materials, Utilities, Maintenance, Repairs, Parts & Rentals	Fuel, office supplies, phones, recruiting and misc. expenses less than budgeted.	(6)	175
	Chemicals-no usage this month	188	1,692
	Utilities-less than budgeted	68	611
	TRA Reservation Fee less than budgeted	-	62
	COH Reservation Fee less than budgeted	-	908
	SJRA Reservation Fee less than budgeted	-	55
	Maintenance repairs, parts & rentals expense less than budgeted.	4	50
General & Administration	Allocated labor and related expenses less than budgeted, anticipated a quicker rate of growth than has been actualized.	14	241
Non-Operating	Interest/Investment Income	16	158
	Other Revenues	-	2
	Bond interest expense	-	1
	Capital Contributions	-	-
	Depreciation expense	(31)	(240)
	Bond Issuance Cost Amort expense	(6)	(3)
		<u>(1,905)</u>	<u>(2,207)</u>



Exhibit 8

GRP Program Monthly Meeting Log for May, 2015

Meeting	Subject of Meeting	Location	Date	Participants
Alkalinity Discussion	Alkalinity	GRP Building	5/19/2015	GRP Staff, Engineers, and Consultant Team
GRP Review Committee Meeting	Board Agenda Items	G&A Building	5/26/2015	GRP Review Committee, SJRA Staff, and General Public
Access Road Meeting	Access Road	GRP Building	5/26/2015	GRP Staff, Engineers, Contractors, and Consultant Team
SJRA Board of Directors Meeting	Board Agenda Items	G&A Building	5/28/2015	SJRA Board of Directors, SJRA Staff, and General Public
Start-up Planning Meeting	Surface Water Facili-	McCarthy Trailer	Daily (Tues.-Fri.)	GRP Staff, Engineers, Contractors, and Consultant Team
CMAR Coordination Meeting	CMAR	GRP Building	Weekly	SJRA Staff, GRP Program Team, and Consultant Team
Construction Administration and Inspection Meetings	Construction	GRP Building	Weekly	SJRA Staff, GRP Program Team, and CA&I Team
Transmission System Coordination Meeting	Transmission System	GRP Building	Weekly	Contractor, SJRA Staff, GRP Program Team, and Consultant Team
Water Receiving Facilities-South Progress Meeting	WRF-S	GRP Building	Monthly	Contractor, SJRA Staff, GRP Program Team, and Consultant Team
Water Receiving Facilities-North Progress Meeting	WRF-N	GRP Building	Monthly	Contractor, SJRA Staff, GRP Program Team, and Consultant Team
Segments W1B, W2A, W2B and W3D Progress Meetings	Segments W2B and W3A	GRP Building	Monthly	Contractor, SJRA Staff, GRP Program Team, and Consultant Team
Segments C1, C2 & C4 Progress Meeting	Segments T1	GRP Building	Monthly	Contractor, SJRA Staff, GRP Program Team, and Consultant Team
Segment T3 Bi-Weekly Progress Meeting	Segment T3	GRP Building	Bi-Weekly	Contractor, SJRA Staff, GRP Program Team, and Consultant Team
FONCS Monthly Progress Meetings	FONCS	GRP Building	Monthly	Contractor, SJRA Staff, GRP Program Team, and Consultant
W3C Land Acquisition Meeting	Land Acquisition	GRP Operations Building	Monthly	SJRA Staff, GRP Program Team, Attorneys, and Consultant
Surface Water Facility Progress Meeting	Surface Water Facili-	GRP Building	Bi-Monthly	SJRA Staff, CMAR, CA&I, and Consultant Team



Surface Water Facilities Construction Photos



EXHIBIT 9 SWF Construction Photos



EXHIBIT 9 (con't) SWF Construction Photos



① *Maintenance Building — Installation of exterior metal wall panels*

EXHIBIT 9 (con't) SWF Construction Photos



② *Chemical System — The first chemical delivery (Aluminum Chlorohydrate)*

EXHIBIT 9 (con't) SWF Construction Photos



③ Pretreatment Facility—Covers installed over the suspended solids plate settlers

EXHIBIT 9 (con't) SWF Construction Photos



③ *Pretreatment Facility—Raw water flowing through the Pretreatment Basin*

EXHIBIT 9 (con't) SWF Construction Photos



④ *Membrane Building—Raw water sampling and testing in new laboratory*

EXHIBIT 9 (con't) SWF Construction Photos



⑤ *Sludge Thickeners—Solids received from the Pretreatment Facility for sludge formation*

Transmission Line System Construction Photos



EXHIBIT 10 (con't) Transmission Line System Construction Photos

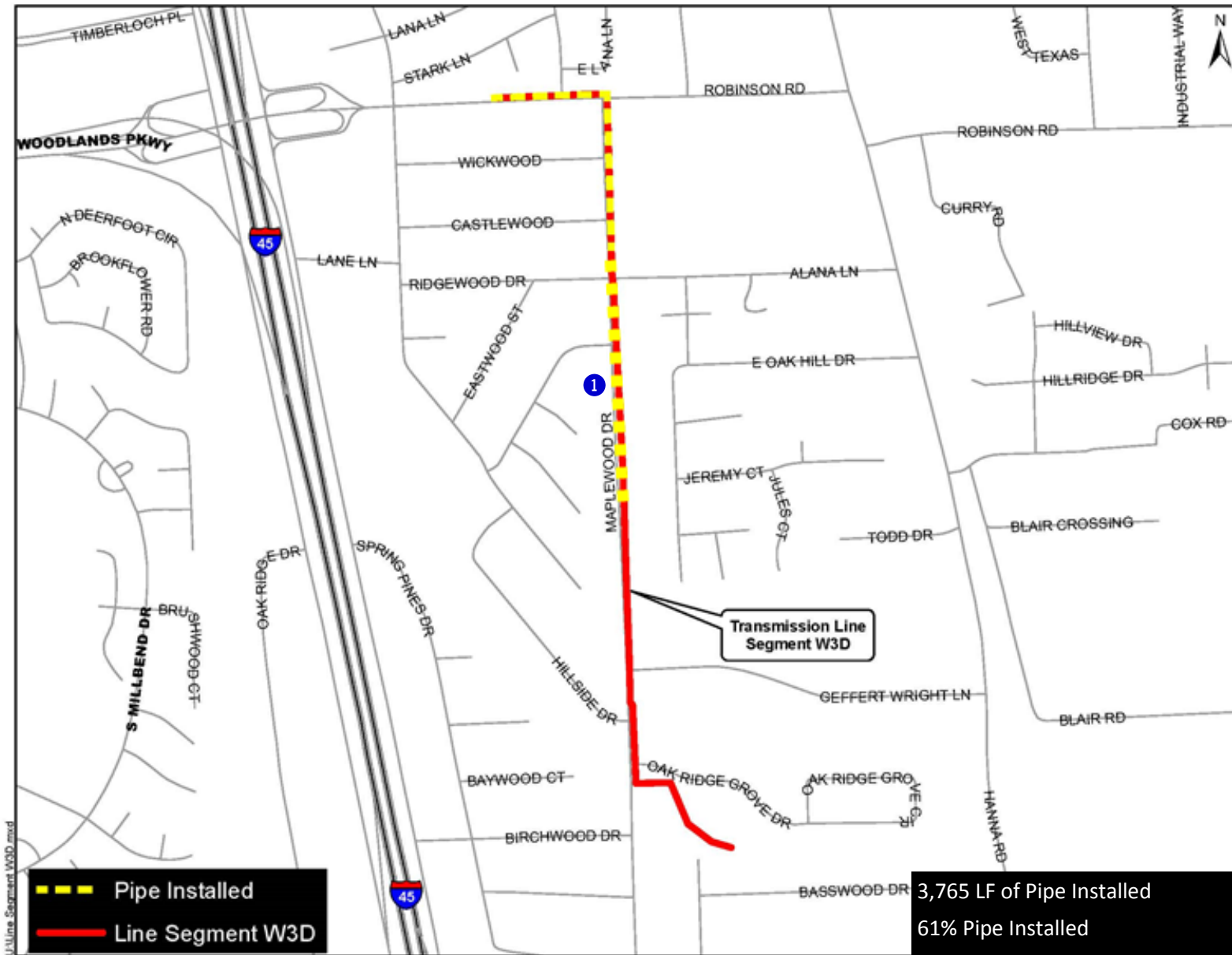


EXHIBIT 10 (con't) Transmission Line System Construction Photos



① *Installation of flushing hydrant adjacent to 16-inch waterline along Maplewood Drive*

EXHIBIT 11 Surface Water Standpipe Construction Photos

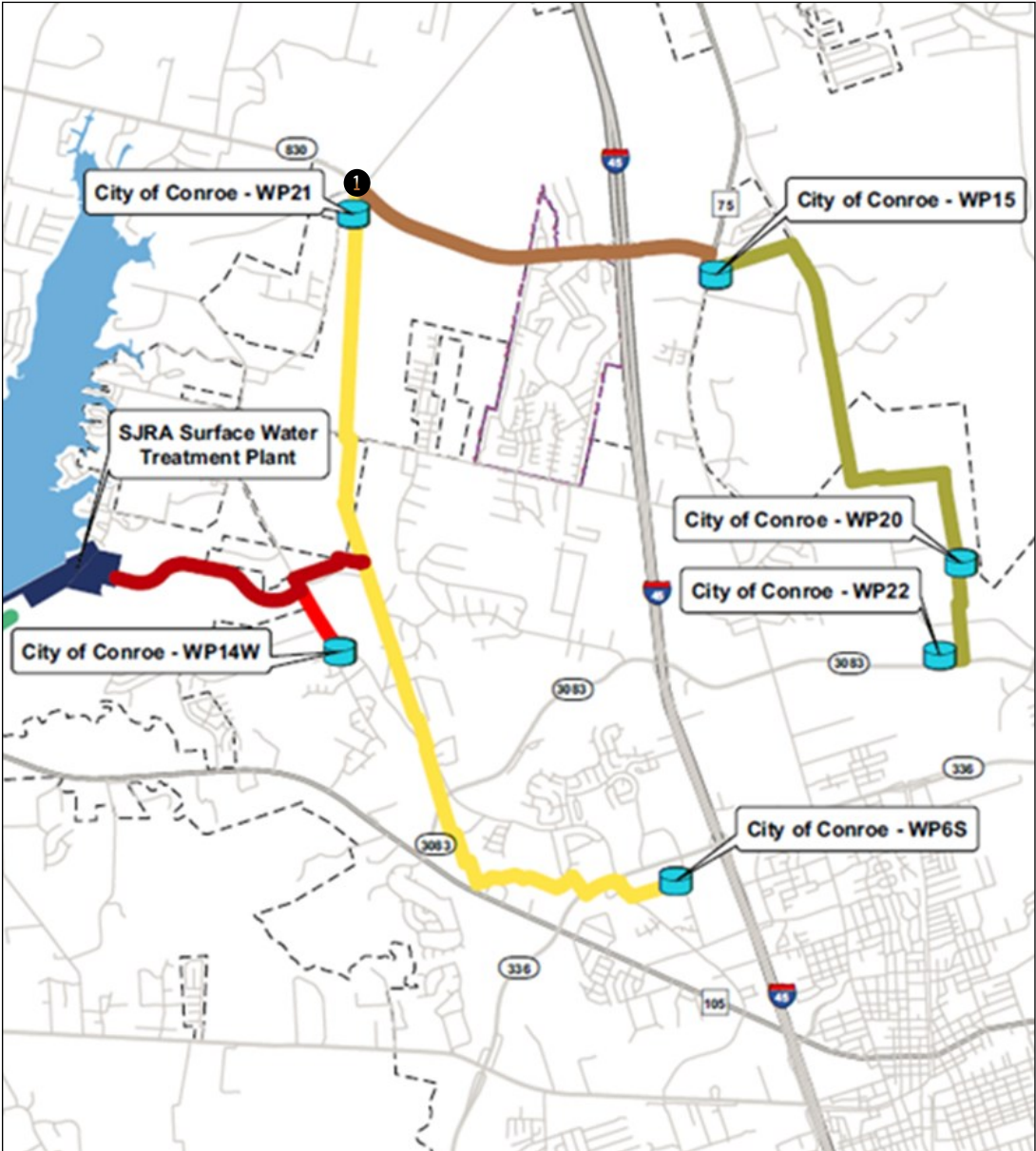


EXHIBIT 11 (con't) Surface Water Standpipe Construction Photos



① *Standpipe yard piping complete; only site paving remains*

Facility Improvements by GRP Participants Photos



EXHIBIT 12 (con't) Facility Improvements by GRP Participants Photos



System Improvements—City of Conroe's Water Plant No. 6 (new pump building)

EXHIBIT 12 (con't) Facility Improvements by GRP Participants Photos



System Improvements - City of Oak Ridge North's Water Plant

EXHIBIT 12 (con't) Facility Improvements by GRP Participants Photos



System Improvements—PLC panel and flow control valve completed at Mid South's Water Plant

EXHIBIT 12 (con't) Facility Improvements by GRP Participants Photos



System Improvements—SJRA staff assisting with check-out at Rayford Road MUD's Water Plant No. 1

EXHIBIT 12 (con't) Facility Improvements by GRP Participants Photos



System Improvements—SCADA PLC communication check-out at Rayford Road MUD's Water Plant No. 2

Fiber Optic Network Communication System Photos



EXHIBIT 13 (con't) Fiber Optic Network Communication System Photos



SJRA staff installing fiber optic cable conduit in the GRP Operations Building

7.0 GRP PROGRAM EXTENSIONS

7.1 ENGINEERING

Design efforts are underway for the GRP Program Extension projects. Below is a summary of the extension projects through the month of May.

Transmission Segment W3C—Segment W3C includes approximately 6,900 linear feet of 12-inch pipe to be constructed east of and connecting to Segment W3B along the Kinder Morgan (Tennessee Gas) pipeline corridor east of I-45, to northward along Aldine Westfield Road to the Montgomery County MUD 99 Water Plant No. 1. The 90% design drawings and specifications have been reviewed. The 100% design drawing and specifications are currently in process.

MUD 99 Receiving Facilities—The 100% design drawings and specifications were initiated in December and are currently in process. At this time, these documents are planned to be combined with the Segment W3C transmission contract documents for a single contract.

