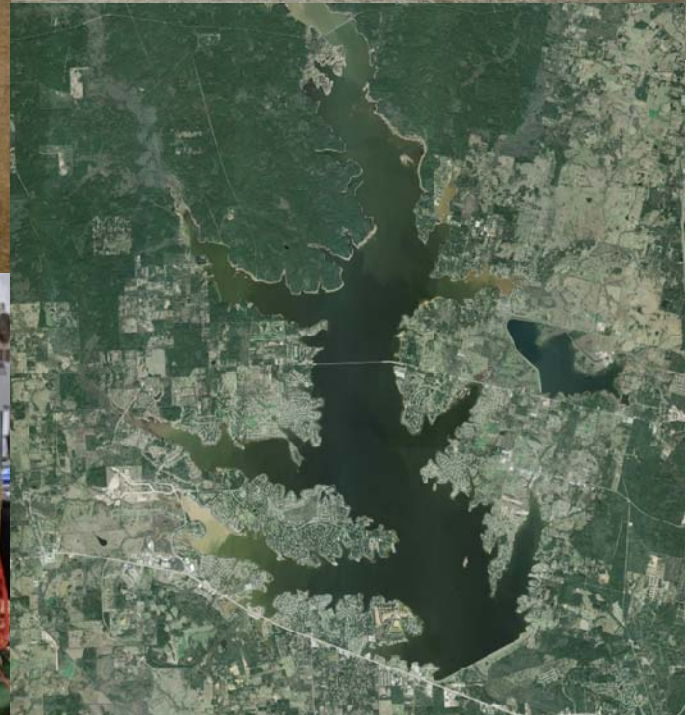




# Groundwater Reduction Plan Program Monthly Progress Report - March 2012

San Jacinto River Authority





## TABLE OF CONTENTS

<b>Table of Contents</b>	<b>i</b>	4.5 Claims	4-2
<b>Acronyms and Definitions</b>	<b>ii</b>	4.6 CIP Cash Flow	4-2
<b>1.0 Planning</b>	<b>1-1</b>	4.7 CIP Budget Estimates at Completion	4-2
1.1 Strategic	1-1	4.8 Land Acquisition	4-2
1.2 Engineering and Construction	1-1	<b>5.0 Quality Assurance</b>	<b>5-1</b>
1.3 Meetings	1-1	<b>6.0 Exhibits</b>	<b>6-1</b>
<b>2.0 Schedule</b>	<b>2-1</b>		
2.1 Engineering	2-1		
2.2 Construction	2-2		
<b>3.0 Procurement</b>	<b>3-1</b>		
3.1 Solicitations	3-1		
3.2 Contract Awards	3-1		
3.3 Process and Procedures	3-1		
3.4 Look Ahead	3-1		
<b>4.0 Cost Report and Financial Considerations</b>	<b>4-1</b>		
4.1 GRP Program and GRP Project CIP Budget(s)	4-1		
4.2 Financial Report	4-1		
4.3 Invoices/Applications for Payment	4-1		
4.4 Contract Amendments and Change Orders	4-2		



## ACRONYMS AND DEFINITIONS

### Acronyms

CA&I	Construction Administration and Inspection	GRP PROGRAM TEAM	SJRA staff, Program Management Consultant (Brown & Gay Engineers, Inc.) staff, and technical consultants working interdependently toward meeting the goals of the Groundwater Reduction Plan.
CM&I	Construction Management and Inspection		
CMAR	Construction Manager at Risk	GRP ADMINISTRATOR	The SJRA General Manager's designee who administers the SJRA Groundwater Reduction Plan and GRP Contract with GRP Participants.
CSB/P	Competitive Sealed Bid/Proposal		
EA	Environmental Assessment	GRP CONTRACT	Contract between the SJRA and a Participant to be included in the SJRA's efforts to meet the surface water conversion requirements mandated by the LSGCD.
GRP	Groundwater Reduction Plan	JOINT GRP	GRP which is prepared to include (takes into account) LVGUs who have executed a GRP Contract with the SJRA to join the SJRA's GRP. Contracted LVGUs obtain LSGCD groundwater reduction regulation compliance through the SJRA's Joint GRP without preparing and submitting a GRP.
GST	Ground Storage Tank		
HSPS	High Service Pump Station	LARGE VOLUME GROUNDWATER USER(S) (LVGU)	Any person or entity that, through a single well or a combination of wells, actually produces or is authorized by permit(s) issued by the LSGCD to produce 10 million gallons or more of groundwater annually on or after January 01, 2008.
LSGCD	Lone Star Groundwater Conservation District	PARTICIPANT(S)	Regulated User(s) that enters into and remains subject to a written agreement with the SJRA to be included in the SJRA's GRP and includes the legal successors or assigns of Participant(s).
LVGU	Large Volume Groundwater User		
PER	Preliminary Engineering Report	REGULATED USER(S)	Any public or private entity or person that is or becomes subject to the District Regulatory Plan established by the LSGCD and includes any amendments, revisions or supplements thereto as may be adopted by the LSGCD.
RFB / Q / P	Request for Bids / Qualifications / Proposals	SJRA GRP DIVISION	Division of the SJRA responsible for GRP compliance, and the management, administration, operation and maintenance of the surface water facilities and surface water transmission system.
RWI	Raw Water Intake & Pump Station		
SJRA	San Jacinto River Authority	SJRA EXECUTIVE MANAGEMENT	Includes SJRA's General Manager, Deputy General Manager - Operations and Deputy General Manager - Administration.
SOQ	Statement of Qualifications		
SWF	Surface Water Facilities (SWTP, HSPS and RWI)		
SWTP	Surface Water Treatment Plant		
TCEQ	Texas Commission on Environmental Quality		
TWDB	Texas Water Development Board		
SWRF	Surface Water Receiving Facility		
WIF	Water Infrastructure Fund		

### Definitions

GROUNDWATER REDUCTION PLAN (GRP)	The document developed and filed with the LSGCD indicating SJRA's plan to reduce the permitted 2009 groundwater pumpage of its GRP Participants by 30%. The GRP is administered by the SJRA, including any supplements, revisions, or amendments.
----------------------------------	---



## 1.0 PLANNING

The GRP Program Team meets regularly for the purposes of setting performance expectations and goals of the GRP Program, identifying the efforts required to achieving these objectives, evaluating the effectiveness of such efforts, and modifying those efforts based upon both internal and external performance evaluations.

### 1.1 Strategic

Strategic planning efforts this month were centered on the creation of a “**Construction Communications Committee**” (CCC) to develop a plan for public outreach and information distribution prior to and during the construction phase of the GRP Program. The CCC is composed of representatives from the SJRA, GRP Participants, local chambers of commerce, local governments, law enforcement, Conroe ISD, Montgomery ISD and other entities impacted by the future GRP Program construction activities. The CCC’s first meeting was conducted March 28, 2012. Initial efforts are focused on further development of the construction phase public outreach plan and the creation of multiple informational brochures and other tools outlining the planned construction packages, sequencing and durations. Once finalized, these items will be distributed and featured on the GRP Division’s website. See subsection 1.2 for more information on construction packaging and sequencing.

### 1.2 Engineering and Construction

Representative planning efforts related to engineering and construction that arose or were further acted upon this month included:

- The strategy for **construction packaging and sequencing of the surface water transmission segments and receiving facilities** was finalized this month by the GRP Program Team. The final strategy divides the transmission system into fourteen (14) construction packages and the receiving facilities into two (2) packages. The strategy takes into account the relative size, location and anticipated duration of the construction packages and sequences them to establish a timely, phased work plan, and maintain bid competitiveness and a desired amount of reputable, qualified bidders. The GRP Program Team will continue to monitor final design and bid phase schedules to proactively address any impacts on the construction packaging and sequencing strategy.

- After completion of the drilling of the pilot hole for Water Well No. 39 in The Woodlands by the SJRA Woodlands Division in March, water samples were collected from the **Catahoula Aquifer** for testing and analysis of the water’s quality. The results of the testing will aid the GRP Program Team in it’s evaluation of the aquifer as a potential alternative water source for future phases of the GRP Program.

### 1.3 Meetings

The GRP Program Team continued meeting with GRP Program stakeholders this month, in addition to its weekly GRP Program and GRP Project status meetings and monthly progress meetings with surface water transmission system and SWF design consultants. A listing of these meetings may be seen in attached Exhibit 10.

Meetings of special note that were led or attended by the GRP Program technical staff this month included the following:

- A workshop for the GRP Program **SCADA (Supervisory Control and Data Acquisition) system** occurred on March 1, 2012. The SCADA system will support the remote operation and monitoring of the SWF and surface water transmission system. Participants included GRP Program Team staff and representatives from the SWF design consultants and SWRF consultant. The workshop focused on the further development of control system design documents, including drawings, details and technical specifications, as well as the components of the SCADA system. All parties will continue to coordinate as final design of the SCADA system progresses.
- The GRP Program Team hosted a series of **design workshops** for the surface water transmission system and SWF design consultants this month. On March 6, 2012, the Program **Transient Analysis, Environmental, and Corrosion Protection** Consultants made presentations, distributed information, and fielded questions from the consultants on design guidelines, processes, and issues. A similar workshop by the Program **Fiber Optic** Consultant was held on March 23, 2012. The GRP Program Team and assorted program and project design consultants will continue to coordinate efforts through final design.

## 1.0 PLANNING (CONTINUED)

- GRP Program Team staff and the surface water **transmission system Segment W-1, W-2 and W-3** design consultants met with Montgomery County Precinct 3 and traffic/transportation staff on March 21, 2012 to discuss the planning **traffic control during construction**. The three design segments are located within The Woodlands and located primarily along Research Forest Drive and Grogans Mill Road, both heavily travelled roadways. Requirements and preliminary concepts were discussed. The GRP Program Team and respective design consultants will continue to coordinate with Montgomery County as well as The Woodlands Development Company.



**Research Forest Drive @  
Gosling Road (Segment W-2)**

- The monthly **southern Montgomery County GRP Program technical status meeting** was held on March 22, 2012 at the SJRA's Woodlands Office. Attendees included representatives from the City of Oak Ridge North. Generally, discussion included the following:
  1. Specific issues/comments related to the recommended alignment for the proposed GRP Program surface water transmission system W-3 segment;
  2. Coordination of specific alignment configuration along the alternative route to Oak Ridge North also serving Southern Montgomery County MUD;
  3. Recommended layout of GRP facilities within the proposed surface water receiving facilities;
  4. Updates to the anticipated surface water transmission system final design schedule; and
  5. Public relations/public outreach efforts by the GRP Program/GRP Administrator and GRP Program Technical Staff.
- The monthly **northern Montgomery County GRP Program technical status meeting** was held on March 28, 2012 at the SJRA's G&A Office. Representatives from the City of Conroe and Commissioner Doyal's office attended. Generally, discussion included the following:

1. Specific issues/comments related to the recommended alignments for the proposed GRP Program surface water transmission system "C" and "T" segments;
2. The design and potential location(s) of the standpipe for stabilizing transmission system pressures;
3. Updates to the anticipated surface water transmission system final design schedule; and
4. Public relations/public outreach efforts by the GRP Program/GRP Administrator and GRP Program Technical Staff.



## 2.0 SCHEDULE

Currently, the GRP Program remains on schedule for the delivery of treated surface water to select Joint GRP Participants on or before January 1, 2016. A simplified GRP Program schedule may be found in attached Exhibit 1.

### 2.1 Engineering

Final design work orders for ten (10) of the eleven (11) surface water transmission system design segments and all three (3) of the surface water facilities are underway. The status of each GRP Program consultant's professional service agreement (contract) work order (phase and percent complete) is indicated in attached Exhibit 2.

Key schedule issues and updates related to GRP Program engineering activities include the following:

- Early **final design** efforts continued this month for the **"T" and "W" design segment** consultants, while Notice to Proceed was issued to the respective consultants for design **Segments C-2, C-3 and C-4** of the surface water transmission system. The first 60% drawings submittals are currently slated for mid-May 2012. Design **Segment C-1** preliminary engineering work continued this month, with the draft Preliminary Engineering Report (PER) and 30% drawings submittals anticipated in early April 2012.
- The **Surface Water Receiving Facilities (SWRF)** design consultant moved closer to completion of preliminary engineering this month. The draft PER and 30% drawings were submitted and a PER presentation was made to the GRP Program Team on March 27, 2012. The final PER and 30% drawings are scheduled for submittal in early April 2012. In anticipation of the conclusion of preliminary engineering, a SWRF final design work order was presented to the GRP Program Review Committee and SJRA Board of Directors at their March 19 and March 22, 2012 meetings, respectively, and approved by the SJRA Board of Directors.
- Final design of the **Surface Water Facilities (SWF)** progressed this month with the submittal of 60% drawings on the Raw Water Intake & Pump Station (RWI) and High Service Pump Station (HSPS). GRP Pro-

gram Team staff and the CMAR are currently reviewing the submittals. Final design work orders related to the proposed Surface Water Treatment Plant (SWTP) Blower Building and the proposed HSPS ground storage tanks were presented to, considered and approved by the GRP Program Review Committee and the SJRA Board of Directors at their respective March meetings. The SWF consultants will continue coordination with the GRP Program Team CMAR and other GRP Program and Project consultants as they continue final design efforts.

- This month the GRP Program Team continued to work with **Mid-South Synergy** and began discussion with **Suddenlink Communications** and **Consolidated Communications** regarding the potential relocation of existing facilities that impact the surface water transmission system **design segment T-1** alignment. A field meeting was held on March 7, 2012 between GRP Program Team staff, T-1 engineering consultant (Jones & Carter), and representatives from Mid-South Synergy and Suddenlink to discuss potential facility relocation options. Coordination with these private utility companies will continue until the conflicts with existing facilities are resolved.
- **SWF guide master technical specifications** and the request/approval process for making changes to them were finalized this month. Draft specifications for the surface water transmission system and receiving facilities are currently being reviewed by their respective design consultants and GRP Program Team staff. Comments are expected in mid-April 2012 and will be reviewed and considered by the GRP Program Team. Finalization of the technical specifications will follow. Efforts for standardizing **construction contract front end documents** for the transmission system, SWRF and SWF construction projects began this month and are on-going.
- A draft **final Environmental Assessment (EA)** was submitted by the Program Environmental Consultant (Halff) early this month for review and comment by the GRP Program Team. Comments were provided, and Halff addressed the comments and finalized the document near the end of the month. Submittal of the final EA to the TWDB is planned for the first week of April. TWDB approval of the final EA is required for construction of Phase I of the GRP Program and release of escrowed funds from the TWDB Series 2011 "A" Bond Issue for use by the GRP Program for land acquisition.

## 2.0 SCHEDULE (CONTINUED)

With the submittal of the final EA, Halff's focus will shift to the development of standard tree survey requirements and master Storm Water Pollution Prevention Plan (SWPPP) for the GRP Program.

### 2.2 Construction

Key issues and updates related to the schedules of GRP Program construction activities include:

- Competitive bids were solicited and received this month for the proposed **relocation of an existing AquaTexas sanitary sewer and access roadway** across the far east side of the SWF site. For more information, see Section 3.1 of this report.
- Solicitation for competitive bids began this month for the proposed **fiber optic line to serve GRP Building No. 1**. See Section 3.1 of this report for more information.
- Brookstone, L.P. continued to make progress on the construction of **GRP Building No. 1** at the SWF site this month. Site work, including utilities and the retaining wall, has been completed and the building foundation is well underway. Final concrete placement is planned for the first week of April 2012, and structural steel is scheduled for delivery a few weeks later. Inclement weather held up progress to an extent. However, it is still anticipated that construction will be completed on schedule.
- Notice to Proceed for the construction of the **temporary access road to the SWF site** was issued to Lindsey Construction effective March 1, 2012. The contractor mobilized and began layout and clearing activities. Unstable soils were encountered for a portion of the road alignment, which required removal and replacement with offsite suitable material. A change order for this work was submitted to, reviewed and approved by GRP Program Team staff and the SJRA General manager. Inclement weather also impeded progress with seven (7) rain days being requested by the contractor as of the end of the month.
- This month, the **Construction Manager-at-Risk (CMAR)** presented the 30% cost model for the HSPS to the GRP Program Team, which confirmed the Project Value Analysis Trend Log is progressing accurately.

The CMAR also completed a constructability review of the RWI 60% drawings and began preparing a 60% cost model, and began review of the HSPS 60% drawings. A second early work package, which includes site and concrete work for the HSPS, GSTs, and RWI, is currently being assembled and is scheduled to be advertised in April 2012. The CMAR continues to work with Pall on the first early work package, the acquisition of the SWTP microfiltration membrane.



**GRP Building No. 1  
construction**





## 3.0 PROCUREMENT

This month the GRP Program Team continued to develop required GRP Program and GRP Project scopes of work for design and consultation services as well as construction contract packages. Current solicitations, contract negotiations, contract awards and a look ahead are included in this section.

### 3.1 Solicitations

The GRP Program Team has developed and made available, received bids/proposals/Statements of Qualifications (SOQs), and/or selected a firm for award on the following solicitations this month:

- **AquaTexas Sanitary Sewer and Access Road Relocation:** Competitive bids were solicited beginning March 8, 2012, and six (6) bids were received and opened on March 28, 2012. Randy Roan Construction, Inc. submitted the low bid of \$516,650.50. The bids were tabulated and will be reviewed by the GRP Program Team with the intent of making a recommendation of award to the SJRA General Manager, GRP Review Committee and the SJRA Board of Directors for consideration at their April 2012 meetings.
- **GRP Building No. 1 Fiber Optic Line:** Competitive bids were solicited beginning March 29, 2012, and bids are scheduled to be received and opened on April 26, 2012. After tabulation and review of the bids received, the GRP Program Team will make a recommendation of award to the SJRA General Manager, GRP Review Committee and the SJRA Board of Directors for consideration.

### 3.2 Contract Awards

The following GRP Program contracts/work orders were taken to the March 19, 2012 GRP Review Committee and March 22, 2012 SJRA Board of Directors Meeting, and were authorized by the SJRA Board of Directors for execution by the SJRA General Manager:

- **HDR Engineering, Inc.:** Work Order No. 13 provides for final design services for the **Surface Water Treatment Plant Blower Building and Aeration System** (\$233,207.00).

- **AECOM Technical Services, Inc.:** Work Order No. 10 provides for baffling, aeration, and detention area final design services for the **High Service Pump Station and Ground Storage Tanks** (\$76,033.00).
- **Arcadis/Malcolm-Pirnie:** Work Order Nos. 3 and 4 provide for final design, survey, and third party design review services for the **Surface Water Receiving Facilities** (\$853,254.00; \$356,197.00).
- **Cobb, Fendley & Associates, Inc.:** Work Order No. 5 provides for metes & bounds services for **Surface Water Transmission System Design Segment W-3** (\$535,228.00).

### 3.3 Process and Procedures

There were no significant changes to the procurement process or procedures this month. The GRP Program continues to utilize traditional and alternative project delivery methods in the procurement of consultant and contractor services.

### 3.4 Look Ahead

The following table provides a very general look ahead at known and anticipated GRP Program professional services and construction contractor solicitations and contract awards. Solicitations may be combined, modified, or canceled and indicated dates or time frames may be modified as deemed necessary.

Project/Services	Purpose	Advertisement/Negotiation	Board Meeting
AquaTexas Sanitary Sewer and Access Road	Construction for relocation of sanitary sewer, pump station & package plant access road	March 2012; CSB PDM	April 26, 2012
Construction Materials Testing (CMT)	CMT services for the construction of AquaTexas sanitary sewer and access road relocation	March 2012; Work Order Amendment	April 26, 2012





### 3.0 PROCUREMENT (CONTINUED)

Project/ Services	Purpose	Advertisement/ Negotiation	Board Meeting
Transmission System Final Design	Amendment No. 1 to Work Order No. 3 and 4 for final design and survey services for Transmission System Segment W-4	March 2012; Work Order Amendment	April 26, 2012
Wastewater Treatment Plant Process Modeling	Amendment No. 1 to Work Order No. 4 for WWTP process modeling	March 2012; Work Order Amendment	April 26, 2012
GRP Building No. 1 Fiber Optic Line	Construction of fiber optic line to serve GRP Building No. 1	March 2012; CSB PDM	May 24, 2012
Construction Administration and Inspection (CA&I)	Owner's Representative for SWF construction	April 2012; RFQ	June 28, 2012
Transmission System Final Design	Final design services for Transmission System Segment C-1	May 2012; Work Orders	June 28, 2012
Proposal Package #2 - Early Work Package	Site and concrete work for the HSPS, GSTs, and RWI	April 2012; RFP	July 26, 2012
Construction Materials Testing (CMT)	CMT services for Transmission System and SWF	May 2012; RFQ	July 26, 2012
Construction Management & Inspection (CM&I)	CM&I services during construction phase of Transmission System	June 2012; Work Order	July 26, 2012



## 4.0 COST REPORT AND FINANCIAL CONSIDERATIONS

### 4.1 GRP Program and GRP Project CIP Budget(s)

Through this month, the GRP Program remains under its \$500,000,000.00 Capital Improvement Project (CIP) (Program) planning budget and forecasts continue to indicate it will be completed under budget (see also subsection 4.6 and Exhibit 7). A summary of the GRP Program's CIP budget and cost considerations as reported to the GRP Review Committee and the SJRA Board of Directors is provided as attached Exhibit 3.

A summary of the SJRA GRP Division's Fiscal Year 2012 (FY12) operating budget (revenue and expenditures) is provided as Exhibit 4. The budget includes all normal and customary expenses for operating a utility based, non-profit business, including debt service, and is developed annually for approval by the SJRA Board of Directors.

The GRP Program is currently operating under the SJRA Board of Director's authorized CIP budget of \$172,400,358.49 (net - \$156,104,587.17). The funding available in the CIP budget allows the SJRA to secure all of the resources required to perform professional services, non-professional services, and procure long lead time equipment during the design phase of the GRP Program.

### 4.2 Financial Report

Funding sources presently applied towards the GRP Program CIP budget include the TWDB's Water Infrastructure Fund (WIF; \$21,500,000.00 [gross]; \$21,029,662.92 [net]), the sale of open market Special Project Revenue Bonds, Series 2011 (\$83,430,358.49 [gross]; \$73,522,352.58 [net]) and TWDB "D" Funds (\$67,470,000.00 [gross]; \$61,552,571.67 [net]). Approved funding to-date represents approximately 31.2% of the \$500,000,000.00 planning budget. The GRP Program's funding and contracted commitments are summarized in the following table and further detailed in attached Exhibits 5 and 6.

Please note that financial reports do not include investment income.

	PREVIOUS (THRU 2/29/12)	MARCH 2012
A. APPROVED FUNDING	\$172,400,358.49	\$0.00
B. AVAILABLE FUNDING AFTER COSTS	\$156,104,587.17	\$156,104,587.17
C. APPROVED CONTRACTS	\$66,176,559.73	\$2,042,690.18
D. UNCONTRACTED FUNDING (B-C; B+B DEC -C-C DEC)	\$89,928,027.44	\$87,885,337.26
E. INVOICED	\$23,794,271.37	\$1,359,527.76
F. REMAINING FUNDS (B-E; B+B DEC-E-E DEC)	\$132,310,315.80	\$130,950,788.04

### 4.3 Invoices/Applications for Payment

GRP Program level and GRP Project level consultant Invoices and/or construction contractor Applications for Payment received through April 10, 2012 are represented in the above table (Item E, March 2012). A detailed breakdown of consultant invoices and/or construction contractor pay applications received for services performed this month appears in following table.

	PREVIOUS (THRU 2/29/12)	MARCH 2012
ENGINEERING & SPECIALTY CONSULTANT (PROGRAM)	\$8,281,036.12	\$410,815.09
ENGINEERING & SPECIALTY CONSULTANT (PROJECT)	\$14,845,743.39	\$633,532.61
CONSTRUCTION CONTRACTOR / CMAR	\$667,491.86	\$315,180.06
TOTALS:	\$23,794,271.37	\$1,359,527.76



## 4.0 COST REPORT AND FINANCIAL CONSIDERATIONS (CONTINUED)

### 4.4 Contract Amendments and Change Orders

No contract amendments were identified or approved by the SJRA Board of Directors this month.

This month, change orders were approved by the SJRA General Manager on the GRP Building No. 1 and SWF Site Temporary Access Road construction projects. A detailed summary of the change orders is included as Exhibit 11.

### 4.5 Claims

No claims were identified this month.

### 4.6 CIP Cash Flow

The GRP Program CIP cash flow through SJRA FY2015 reflects known expenditures through March 2012 and estimates for future expenditures were updated this month. All active and currently identified future GRP Program Projects and initiatives are included in the cash flow. A graph of forecasted monthly expenditures from the referenced cash flow is attached as Exhibit 7.



### 4.7 CIP Budget Estimates at Completion

#### **4.7.1 GRP Program**

Comparison of in-place funding against currently contracted and identified near term GRP Program contracting needs (plus contingency) indicates that current funding will allow the GRP Program to **meet its currently forecasted expenditure needs through Spring 2013**.

The **total gross funds** (including capitalized interest) required to execute Phase I of the GRP Program are currently estimated at \$577,930,358.49.

#### **4.7.2 GRP Projects**

The GRP Program Projects remained within their approved contract budgets through this month. Exhibit 8 indicates each active GRP Program Project and GRP Program contract forecasted estimate at completion (EAC). Additionally, all current GRP Program contracts, including their respective SJRA Board of Directors approved budgeted amounts and percent complete, are listed in Exhibit 2.

### 4.8 Land Acquisition

The GRP Program Team and its team of assorted GRP Program land acquisition consultants and counsel continued acquisition efforts this month. Efforts have been initiated on all of the surface water transmission system design segments. Title and easement research continued on the "C" and "W" segments, and many of the design segment consultants have begun metes & bounds preparation efforts. Progress continued on easement acquisition at the northern end of the T-1 design segment near SH 105 and McCaleb Road. This month, one easement was recorded, another was filed for recordation, and a final offer was made on another. Two other easements have condemnation hearings set for April 18, 2012. Cumulative easement acquisition activity is depicted in attached Exhibit 9.



## 5.0 QUALITY ASSURANCE

With the beginning or continuation of final design on all SWF and ten (10) of the eleven (11) surface water transmission system design segments, GRP Program quality assurance efforts continued this month. Preliminary engineering neared completion on the SWRF, while early final design submittals were received on the RWI and HSPS.

### *Preliminary Engineering*

This month's activity associated with the Preliminary Engineering Reports (PERs) and 30% (complete) design drawings produced by the engineering consultants is as follows:

1. **Arcadis/Malcolm-Pirnie (SWRF)** – The draft PER was submitted to the GRP Program Team and review comments provided. PER presentation was held March 27, 2012. Final PER and 30% drawings are anticipated in early April 2012.

### *Final Design*

This month's activity associated with final design deliverables produced by the engineering consultants is as follows:

1. **AECOM (HSPS)** – 60% drawings, and early work package drawings and specifications were submitted to the GRP Program Team on March 26, 2012, and are currently under review.
2. **Freese and Nichols (RWI)** – 60% drawings were submitted to the GRP Program Team on March 2, 2012, and are currently under review.

As final design progresses and milestone submittals are received, the GRP Program Team will review and provide comments, as applicable to each milestone. The review will be based on submittal compliance with the GRP Program's Design Standards and Criteria Manual, completeness per Program Management Plan (PMP) Section 14.0 – Quality Management and PMP Section 21.0 – Design Management, and general project understanding.

### *Construction*

While construction of the SWF and surface water transmission system is not anticipated to begin until later this year, several construction projects associated with the SWF site have begun (GRP Building No. 1; Temporary Access Road). Through construction of these projects, an SJRA Construction Inspector will make regular visits to the project site to monitor and document observed progress and confirm compliance with the construction contract.

## 6.0 EXHIBITS

Exhibit 1 - GRP Program Schedule

Exhibit 2 - Active Contracts

Exhibit 3 - Monthly GRP Program Financing Report

Exhibit 4 - SJRA GRP Schedule of Revenues & Expenses - Actual & Budget  
and SJRA GRP Savings & Uses

Exhibit 5 - GRP Program Fund Data

Exhibit 6 - Funding Source Summary

Exhibit 7 - GRP Monthly Forecasted Expenditures for Contracted Services

Exhibit 8 - Estimate at Completion (EAC) for Current Authorizations

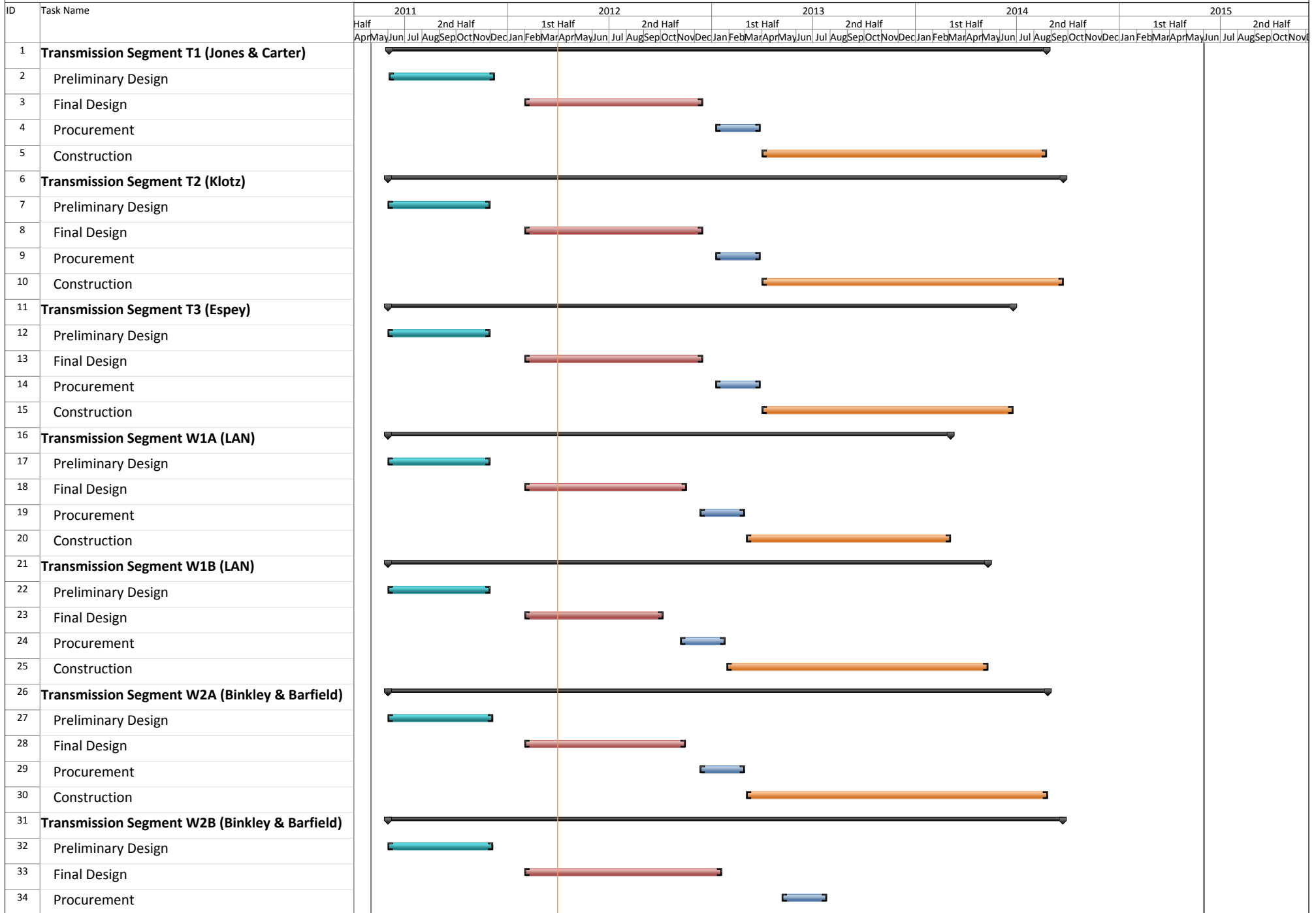
Exhibit 9 - Land Acquisition Summary

Exhibit 10 - GRP Program Monthly Meeting Log

Exhibit 11 - GRP Amendments and Change Orders

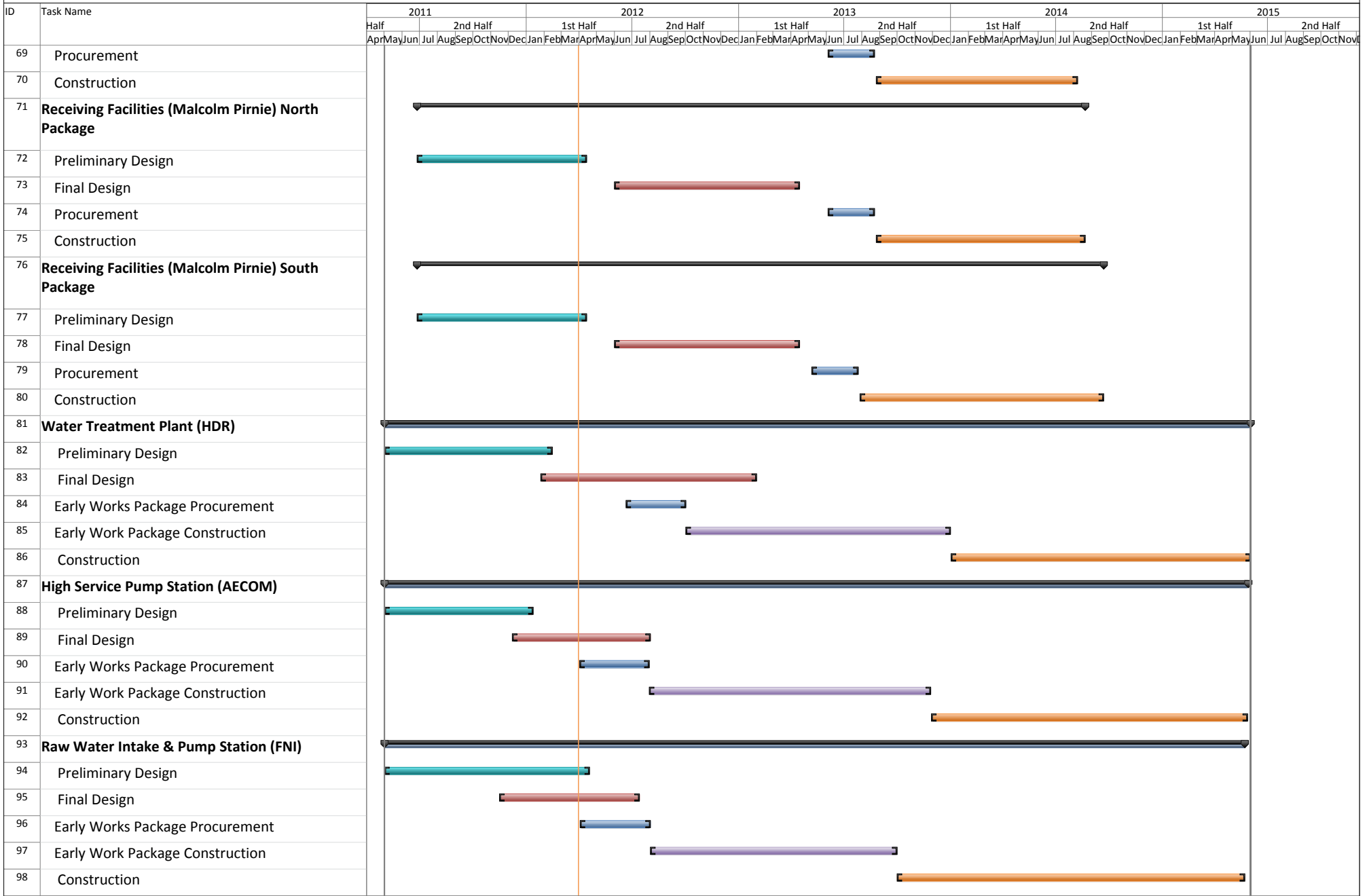


# Exhibit 1 - GRP Program Schedule





# Exhibit 1 - GRP Program Schedule (Continued)







## Exhibit 2 Selected GRP Program Contracts March 31, 2012

GRP Program Projects - Design										
Engineering Consultant	Project Name	PER Fee	Percent Complete	Metes & Bounds Fee	Percent Complete	Final Design Fee	Percent Complete	CPS Fee	Percent Complete	Engineer's Construction Cost Estimate
Jones & Carter	Transmission Segment T1	\$ 923,031	100%			\$ 975,317	35%			\$ 19,251,600
Klotz	Transmission Segment T2	\$ 623,565	100%	\$ 170,848	0%	\$ 819,546	35%			\$ 19,800,000
Espey	Transmission Segment T3	\$ 553,124	100%	\$ 146,847	20%	\$ 855,184	20%			\$ 15,720,000
Lockwood, Andrews, Newnan	Transmission Segment W1	\$ 920,621	100%	\$ 96,690	5%	\$ 1,086,983	20%			\$ 17,600,400
Binkley & Barfield, Inc.	Transmission Segment W2	\$ 956,237	100%			\$ 1,360,806	20%			\$ 18,906,300
Cobb Fendley	Transmission Segment W3	\$ 1,161,967	100%	\$ 203,507	0%	\$ 1,555,247	20%			\$ 19,935,207
LJA	Transmission Segment W4	\$ 364,730	100%			\$ 511,282	5%			\$ 6,716,718
Dannenbaum	Transmission Segment C1	\$ 332,300	80%							\$ 6,455,000
Schaumburg & Polk	Transmission Segment C2	\$ 1,003,246	100%	\$ 309,980	0%	\$ 685,068	5%			\$ 13,994,727
Kimley-Horn	Transmission Segment C3	\$ 490,657	100%	\$ 159,740	0%	\$ 616,103	5%			\$ 7,420,000
R.G. Miller	Transmission Segment C4	\$ 217,507	100%	\$ 18,016	0%	\$ 281,449	15%			\$ 4,640,156
Malcolm Pirnie	Receiving Facilities	\$ 598,651	100%			\$ 1,209,451	0%			\$ 9,427,000



**Exhibit 2 (Continued)**  
**Selected GRP Program Contracts**  
**March 31, 2012**

GRP Program Projects - Design										
Engineering Consultant	Project Name	PER Fee	Percent Complete	Metes & Bounds Fee	Percent Complete	Final Design Fee	Percent Complete	CPS Fee	Percent Complete	Engineer's Construction Cost Estimate
HDR, Inc.	Water Treatment Plant	\$ 3,104,114	98%			\$ 7,694,130	10%			\$ 135,000,000
AECOM, Inc.	High Service Pump Station	\$ 1,224,776	100%			\$ 1,895,488	25%			\$ 39,960,000
Freeze and Nichols, Inc.	Raw Water Intake and Pump Station	\$ 1,249,700	100%			\$ 1,284,900	60%			\$ 21,000,000
ACES	Access Rd. & San. Swr. Relocation; Temp. SWF Access Rd.					\$ 435,000	100%			\$ 577,000; \$ 1,500,000
EMA, Inc.	Fiber Optic System	\$ 161,390	100%			\$ 279,899	10%			\$ 5,364,000
<b>TOTALS</b>		<b>\$ 13,885,616</b>	<b>-</b>	<b>\$ 1,105,627</b>	<b>-</b>	<b>\$ 21,545,852</b>	<b>-</b>	<b>\$ -</b>	<b>-</b>	<b>\$ 363,268,108</b>



**Exhibit 2 (Continued)**  
**Selected GRP Program Contracts**  
**March 31, 2012**

GRP Program Consultant Contracts			
Engineering Consultant	Program Consultant Service	Total Fee of Work Orders	Percent Complete
Brown & Gay Engineers	Program Management	\$ 7,244,751	79%
Raba Kistner	Geotechnical	\$ 145,260	35%
LandTech	Survey	\$ 514,524	87%
Halff	Environmental	\$ 1,065,324	98%
Property Acquisition Services	Land Acquisition	\$ 1,415,550	72%
V&A	Cathodic Protection	\$ 511,978	8%
KDM	Land Acquisition	\$ 401,700	40%
Andrews Kurth	Legal	\$ 900,000	54%
Mike Bellar	Legal	\$ 100,000	12%
Brown & Caldwell	CMAR Contract Development Assistance	\$ 123,857	79%
Greenburg Traurig	Legal	\$ 200,000	48%
AECOM	Transient	\$ 374,100	19%
McCarthy	CMAR	\$ 10,346,793	45%
KBR	CM&I	\$ 533,433	0%
<b>Total</b>		<b>\$ 23,877,269</b>	



**Exhibit 2 (Continued)**  
**Selected GRP Program Contracts**  
**March 31, 2012**

GRP Program Projects - Construction			
Construction Project	Construction Contractor	Contract Amount	Percent Complete
GRP Building No. 1	Brookstone	\$ 1,975,306	24%
GRP Temporary Access Road	Lindsey Construction	\$ 1,006,681	5%
<b>Total</b>		<b>\$ 2,981,987</b>	



## Exhibit 3

# Monthly GRP Program Financing Report

### Fiscal Year 2012

Through 3/31/2012

	WIF Funds	2011 Special Projects Revenue Bonds	TWDB 2011 'D' Fund	Totals
<b>A. Program Budget</b>				
Bond Issue Amount	\$ 21,500,000.00	\$ 83,430,358.49	\$ 67,470,000.00	\$ 172,400,358.49
<b>Total Investment</b>	<b>\$ 21,500,000.00</b>	<b>\$ 83,430,358.49</b>	<b>\$ 67,470,000.00</b>	<b>\$ 172,400,358.49</b>
<b>B. Contracted Costs</b>				
Contracts Completed	\$ 3,104,963.00	\$ 382,351.02	\$ -	\$ 3,487,314.02
Current Contract Values	\$ 17,906,218.89	\$ 45,728,950.10	\$ 1,119,653.90	\$ 64,754,822.89
Change Orders	\$ -	\$ (22,887.00)	\$ -	\$ (22,887.00)
<b>Total</b>	<b>\$ 21,011,181.89</b>	<b>\$ 46,088,414.12</b>	<b>\$ 1,119,653.90</b>	<b>\$ 68,219,249.91</b>
<b>C. Expenditures</b>				
Paid Previous Fiscal Years	\$ 8,359,940.89	\$ 85,949.90	\$ -	\$ 8,445,890.79
Paid Current Fiscal Year	\$ 10,794,203.42	\$ 5,868,304.92	\$ 45,400.00	\$ 16,707,908.34
Issuance Costs	\$ 470,337.08	\$ 2,049,764.39	\$ 751,195.33	\$ 3,271,296.80
Capitalized Interest	\$ -	\$ 7,858,241.52	\$ 5,166,233.00	\$ 13,024,474.52
<b>Total</b>	<b>\$ 19,624,481.39</b>	<b>\$ 15,862,260.73</b>	<b>\$ 5,962,828.33</b>	<b>\$ 41,449,570.45</b>
<b>D. Remaining</b>				
Uncontracted Funds	\$ 18,481.03	\$ 27,433,938.46	\$ 60,432,917.77	\$ 87,885,337.26
Fund Balance *	\$ 1,875,518.61	\$ 67,568,097.76	\$ 61,507,171.67	\$ 130,950,788.04

\*Excluding net investment income

**Exhibit 4**  
**San Jacinto River Authority**  
**Groundwater Reduction Plan**  
**Schedule of Revenues & Expenses - Actual & Budget**  
**For the Six Months Ending February 29, 2012**

	February			Year To Date		
	Actual	Budget	Variance	Actual	Budget	Variance
<b>OPERATING REVENUES</b>						
Water sales						
GRP pumping fees	\$ 742,479.72	\$ 1,181,490.75	\$ (439,011.03)	\$ 6,683,321.51	\$ 6,561,979.25	\$ 121,342.26
<b>TOTAL OPERATING REVENUES</b>	<b>742,479.72</b>	<b>1,181,490.75</b>	<b>(439,011.03)</b>	<b>6,683,321.51</b>	<b>6,561,979.25</b>	<b>121,342.26</b>
<b>OPERATING EXPENSES</b>						
Payroll & employee benefit expenses	212,309.08	315,120.75	102,811.67	844,601.07	1,441,023.34	596,422.27
Professional fees	1,206.40	18,922.00	17,715.60	(12,215.51)	426,932.00	439,147.51
Purchased & contracted services	4,354.04	22,334.00	17,979.96	40,389.02	146,000.00	105,610.98
Supplies, materials & utilities	610,192.61	28,121.75	(582,070.86)	1,704,473.53	2,383,839.50	679,365.97
Maintenance repairs, parts & rentals	667.95	1,167.33	499.38	7,927.30	6,995.98	(931.32)
General & administration	51,370.36	84,439.88	33,069.52	277,143.39	506,639.28	229,495.89
<b>TOTAL OPERATING EXPENSES</b>	<b>880,100.44</b>	<b>470,105.71</b>	<b>(409,994.73)</b>	<b>2,862,318.80</b>	<b>4,911,430.10</b>	<b>2,049,111.30</b>
<b>NON-OPERATING REVENUES &amp; EXPENSES</b>						
Interest on investments	104,652.06	15,410.33	89,241.73	315,886.17	92,461.98	223,424.19
Unrealized Gains (losses) on investments	(20,464.08)		(20,464.08)	48,896.23		48,896.23
Realized Gains (losses) on investments	(7,756.92)		(7,756.92)	(22,890.15)		(22,890.15)
Other revenues				583.51		583.51
Depreciation	(3,365.78)		(3,365.78)	(19,579.84)		(19,579.84)
Interest expense	(530,535.27)	(144,458.67)	(386,076.60)	(2,482,313.92)	(866,752.02)	(1,615,561.90)
Amortized debt issuance expense	(10,947.33)		(10,947.33)	(55,184.74)		(55,184.74)
<b>TOTAL NON-OPERATING</b>	<b>(468,417.32)</b>	<b>(129,048.34)</b>	<b>(339,368.98)</b>	<b>(2,214,602.74)</b>	<b>(774,290.04)</b>	<b>(1,440,312.70)</b>
<b>NET INCOME (LOSS)</b>	<b>\$ (606,038.04)</b>	<b>\$ 582,336.70</b>	<b>\$(1,188,374.74)</b>	<b>\$ 1,606,399.97</b>	<b>\$ 876,259.11</b>	<b>\$ 730,140.86</b>

\*This includes a snap-shot of net investment income as of February 29th, 2012; including amortization/accretion, realized gain/loss, unrealized gain/loss and interest earned.

## Exhibit 4 (Continued)

### GRP Division

#### Clarification of Actual & Budget Variances

(in thousands)

Category	Driver	September 2011	October 2011	November 2011	December 2011	January 2012	February 2012	FYTD 2012
GRP Pumping Fees	Usage variance Sep-Nov due to drought conditions; usage variance Dec-Feb due to wet conditions	912	468	205	(333)	(693)	(439)	121
Payroll and related expenses	Actual labor and related expenses less than budgeted	68	102	99	114	110	51	545
Professional Fees	Legal, Engineering & Consultants budgeted straight-line, should correct over time	69	79	103	21	17	17	304
	Staffing Services budgeted straight-line, should correct over time	48	23	32	20	10	1	135
Purchased & Contracted Services	Contracted Services budgeted straight-line, should correct over time	9	7	15	12	13	14	70
	Water Conservation & Public Education Activities budgeted straight-line, should correct over time	14	4	6	4	4	4	36
Supplies, Materials, Utilities, Maintenance, Repairs, Parts & Rentals	Additional Water Supply, lump sum budget in Sept., should correct over time	500	-	-	-	-	-	500
	Reservation Fees: COH \$100,861.24 due to 2011 true-up	-	-	-	-	684	(602)	82
	SJRA: payment made in February							
	Supplies, Materials, Utilities, Maintenance, Repairs, Parts & Rentals expenses less than budgeted	20	18	19	14	4	21	96
General & Administration	Actual labor and related expenses less than budgeted	64	38	27	30	38	84	281
Non-Operating	Non-Operating expenses more than budgeted; largely driven by bond interest expense	(186)	(199)	(186)	(268)	(262)	(339)	(1,440)
		<b>1,518</b>	<b>540</b>	<b>320</b>	<b>(387)</b>	<b>(74)</b>	<b>(1,188)</b>	<b>730</b>



## Exhibit 5 GRP Program Fund Data April 16, 2012

Funding Source	Amount Authorized by Board To-Date	Interest Rate	Bond Costs	Capitalized Interest	Debt Service Reserve Fund	Amount Available	Pending Funding Source	Invoiced To-Date	Remaining Amount
WIF Bond Issue	\$ 21,500,000.00	.854% - 2.706%	\$ 470,337.08	\$ -		\$ 21,029,662.92		\$ 19,518,602.53	\$ 1,511,060.39
Open Market Bond Issue	\$ 83,430,358.49	3% - 5.25%	\$ 2,049,764.39	\$ 7,858,241.52		\$ 73,522,352.58		\$ 7,761,829.73	\$ 65,760,522.85
TWDB 'D' Fund Bond Issue	\$ 67,470,000.00	1.22% - 4.97%	\$ 751,195.33	\$ 5,166,233.00		\$ 61,552,571.67		\$ 45,400.00	\$ 61,552,571.67
TWDB 'D' Fund (2)(Est)	\$ 175,000,000.00		\$ 980,000.00	\$ 12,870,000.00			\$ 161,150,000.00	\$ -	\$ 161,150,000.00
2012 "A" Bond Issue (Est.)	\$ 230,530,000.00		\$ 1,097,000.00	\$ 20,125,000.00	\$ 24,730,000.00		\$ 184,578,000.00	\$ -	\$ 184,578,000.00
<b>Totals</b>	<b>\$ 577,930,358.49</b>		<b>\$ 5,348,296.80</b>	<b>\$ 46,019,474.52</b>		<b>\$ 156,104,587.17</b>	<b>\$ 345,728,000.00</b>	<b>\$ 27,325,832.26</b>	<b>\$ 474,552,154.91</b>

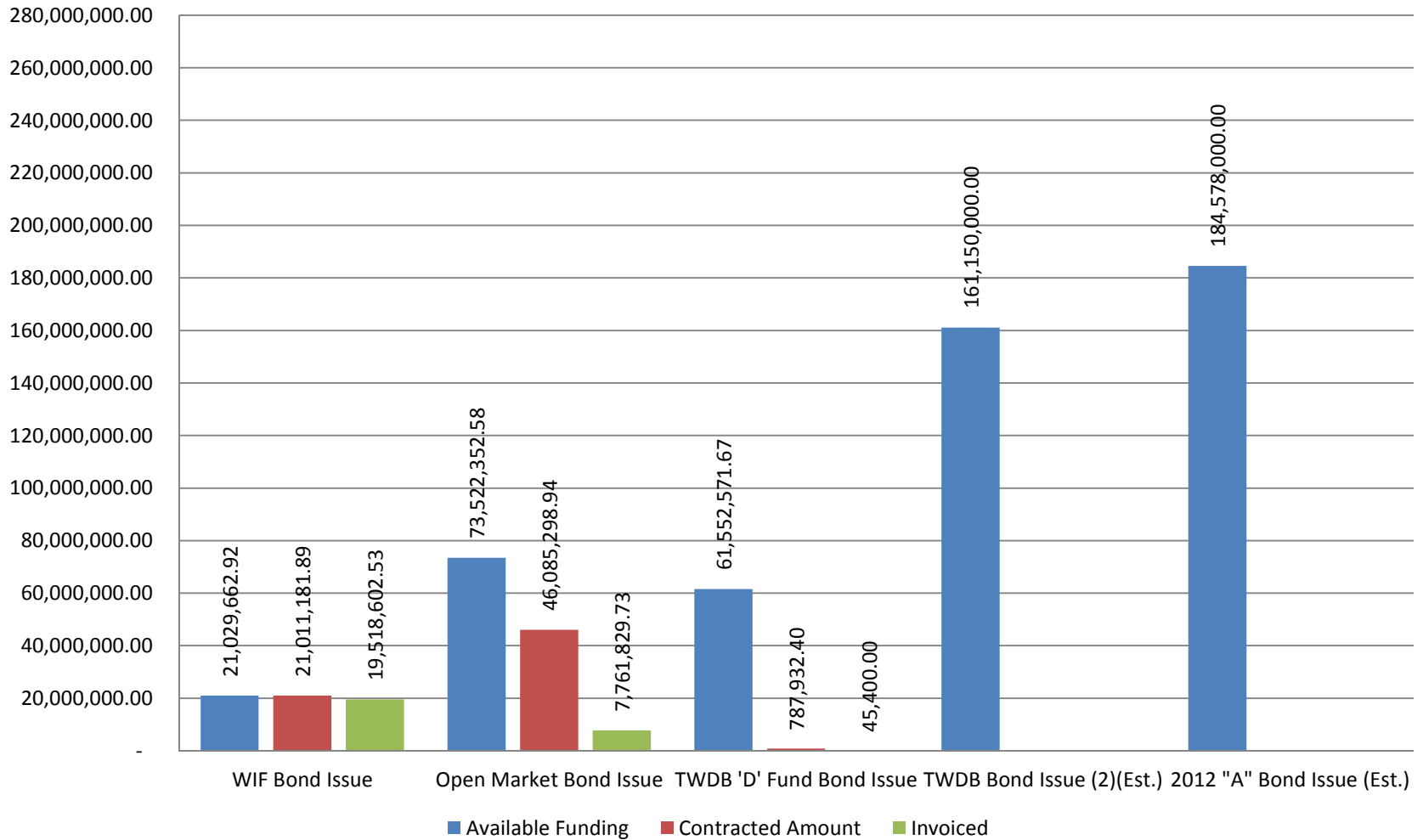
Notes:

1. These value do not include investment income.
2. Red items are estimates only.
3. Series 2011 bond costs include \$681,132.45 for bond insurance and \$459,709.50 for underwriter's discount.



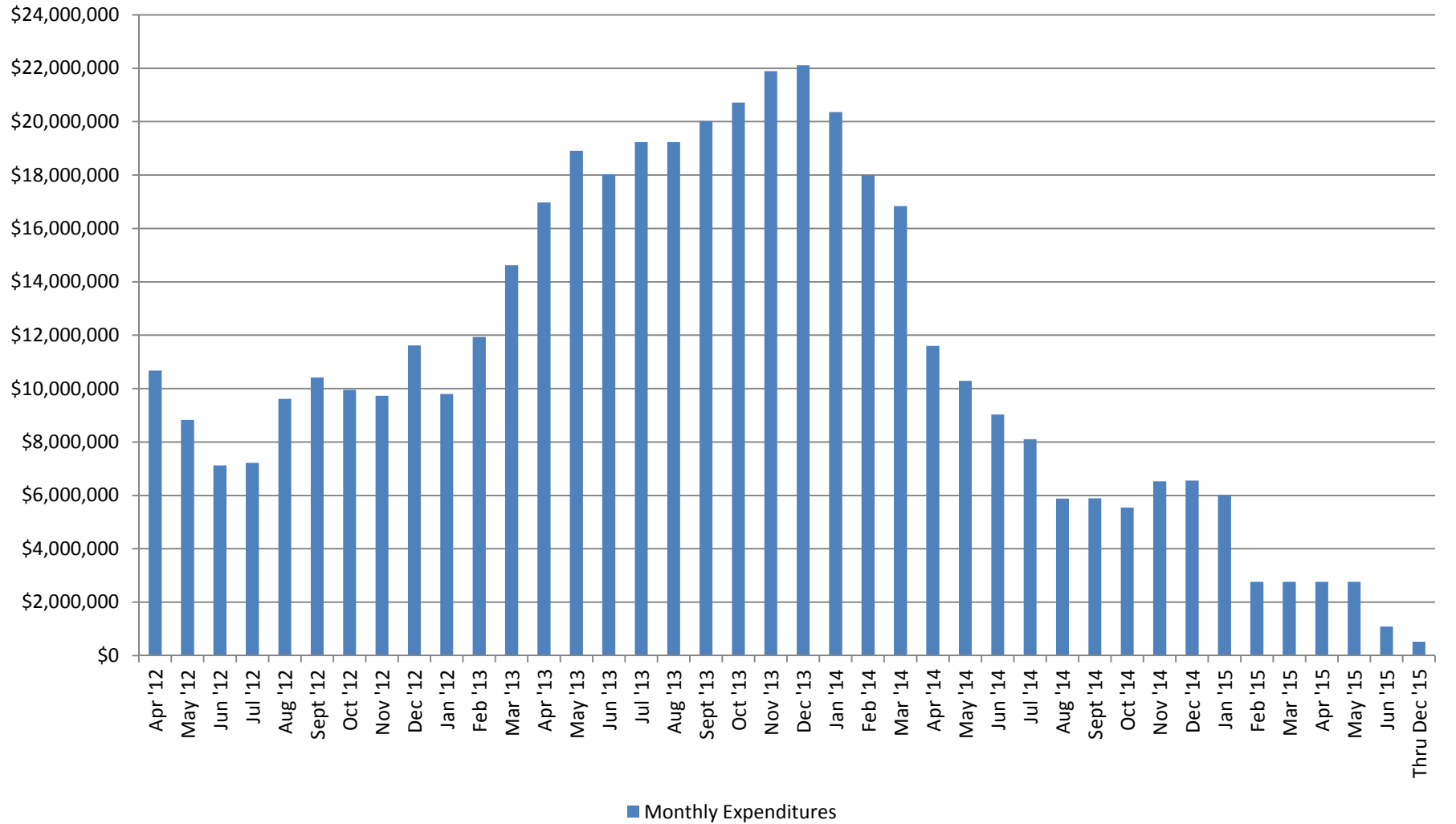


## Exhibit 6 Funding Source Summary April 16, 2012





## Exhibit 7 GRP Program Monthly Forecasted Expenditures for Contracted Services April 16, 2012





## Exhibit 8

### Estimate at Completion (EAC) for Current Authorizations

### March 31, 2012

#### Surface Water Transmission System

Project	Firm	Amount Authorized by Board	Board Authorized Modifications		Forecasted Modification Amount	Estimate at Completion (EAC)
			Dollars	%		
T1	Jones & Carter	\$ 1,898,348.00		0.0%		\$ 1,898,348.00
T2	Klotz	\$ 1,613,958.55		0.0%		\$ 1,613,958.55
T3	Espey	\$ 1,555,154.42		0.0%		\$ 1,555,154.42
W1	LAN	\$ 2,104,294.00		0.0%		\$ 2,104,294.00
W2	Binkley & Barfield	\$ 2,317,042.55		0.0%		\$ 2,317,042.55
W3	Cobb Fendley	\$ 3,252,441.50		0.0%		\$ 3,252,441.50
W4	LJA	\$ 876,011.82		0.0%		\$ 876,011.82
C1	Dannenbaum	\$ 332,300.00		0.0%		\$ 332,300.00
C2	Schaumburg & Polk	\$ 1,790,745.97	\$ 207,547.98	11.6%		\$ 1,998,293.95
C3	Kimley-Horn	\$ 1,234,193.45	\$ 32,307.28	2.6%		\$ 1,266,500.73
C4	R.G. Miller	\$ 516,971.97		0.0%		\$ 516,971.97
RFs	Malcolm Pirnie/Arcadis	\$ 1,808,102.00		0.0%		\$ 1,808,102.00
CM&I	KBR	\$ 533,432.62		0.0%		\$ 533,432.62
<b>Subtotal - Surface Water Transmission System</b>		<b>\$ 19,832,996.85</b>	<b>\$ 239,855.26</b>	<b>1.2%</b>	<b>\$ -</b>	<b>\$ 20,072,852.11</b>

#### Surface Water Facilities

Project	Firm	Amount Authorized by Board	Board Authorized Modifications		Forecasted Modification Amount	Estimate at Completion (EAC)
			Dollars	%		
WTP	HDR	\$ 13,590,846.00		0.0%		\$ 13,590,846.00
HSPS	AECOM	\$ 3,364,192.00		0.0%		\$ 3,364,192.00
RWI&PS	Freese and Nichols	\$ 2,600,970.00		0.0%		\$ 2,600,970.00
CMAR	McCarthy	\$ 10,346,793.00		0.0%		\$ 10,346,793.00
<b>Subtotal - Surface Water Facilities</b>		<b>\$ 29,902,801.00</b>	<b>\$ -</b>	<b>0.0%</b>	<b>\$ -</b>	<b>\$ 29,902,801.00</b>



## Exhibit 8 (Continued)

# Estimate at Completion (EAC) for Current Authorizations

## March 31, 2012

### Program Consultant Services & Other Projects

Project	Firm	Amount Authorized by Board	Board Authorized Modifications		Forecasted Modification Amount	Estimate at Completion (EAC)
			Dollars	%		
Prog Mgmt	Brown & Gay	\$ 7,244,751.00		0.0%		\$ 7,244,751.00
Prog Survey	Landtech	\$ 514,524.00		0.0%		\$ 514,524.00
Prog Geo	Raba Kistner	\$ 145,260.00		0.0%		\$ 145,260.00
Prog Tran	AECOM	\$ 224,100.00	\$ 150,000.00	66.9%		\$ 374,100.00
Access Rd	ACES	\$ 435,000.00		0.0%		\$ 435,000.00
Access Rd	S&V Survey	\$ 66,875.00		0.0%		\$ 66,875.00
Land Acq	KDM	\$ 359,995.00	\$ 41,705.00	11.6%		\$ 401,700.00
Land Acq	PAS	\$ 1,415,550.00		0.0%		\$ 1,415,550.00
Prog Env	Halff	\$ 1,022,192.00	\$ 43,131.52	4.2%		\$ 1,065,323.52
Prog Fiber	EMA	\$ 441,289.00		0.0%		\$ 441,289.00
Prog Corr	V&A	\$ 511,978.00		0.0%		\$ 511,978.00
Prog Svcs & Projs	Other Program Services & Projects	\$ 2,533,018.00		0.0%		\$ 2,533,018.00
<b>Subtotal - Program Consultant Services &amp; Other Projects</b>		<b>\$ 14,914,532.00</b>	<b>\$ 234,836.52</b>	<b>1.6%</b>	<b>\$ -</b>	<b>\$ 15,149,368.52</b>

### Construction Contracts

Project	Firm	Amount Authorized by Board	Board Authorized Modifications		Forecasted Modification Amount	Estimate at Completion (EAC)
			Dollars	%		
GRP Bldg #1	Brookstone	\$ 2,009,900.00	\$ (43,137.00)	-2.1%		\$ 1,966,763.00
Bldg #1 CMT	Aviles	\$ 48,193.60		0.0%		\$ 48,193.60
Landscape Buffer	KeyScape	\$ 47,490.00		0.0%		\$ 47,490.00
Temp Access Road	Lindsey Construction	\$ 986,431.00	\$ 20,250.00	2.1%		\$ 1,006,681.00
Access Road CMT	Terracon Consultants	\$ 12,842.50		0.0%		\$ 12,842.50
Other	Other Construction Contracts	\$ 600.00		0.0%		\$ 600.00
<b>Subtotal - Surface Water Facilities</b>		<b>\$ 3,105,457.10</b>	<b>\$ (22,887.00)</b>	<b>-0.7%</b>	<b>\$ -</b>	<b>\$ 3,082,570.10</b>

### Totals

	Amount Authorized by Board	Board Authorized Modifications		Forecasted Modification Amount	Estimate at Completion (EAC)
		Dollars	%		
Subtotal - Surface Water Transmission System	\$ 19,832,996.85	\$ 239,855.26	1.2%	\$ -	\$ 20,072,852.11
Subtotal - Surface Water Facilities	\$ 29,902,801.00	\$ -	0.0%	\$ -	\$ 29,902,801.00
Subtotal - Program Consultant Services & Other Projects	\$ 14,914,532.00	\$ 234,836.52	1.6%	\$ -	\$ 15,149,368.52
Subtotal - Construction Contracts	\$ 3,105,457.10	\$ (22,887.00)	-0.7%	\$ -	\$ 3,082,570.10
<b>Total</b>	<b>\$ 67,755,786.95</b>	<b>\$ 451,804.78</b>	<b>0.7%</b>	<b>\$ -</b>	<b>\$ 68,207,591.73</b>



## Exhibit 9 Land Acquisition Summary March 31, 2012

Project	Anticipated Number of Easements to Acquire	Easements Acquired This Month	Easements Acquired Total
Transmission System Segment T-1	56	1	2
Transmission System Segment T-2	TBD	0	0
Transmission System Segment T-3	33	0	0
Transmission System Segment C-1	TBD	0	0
Transmission System Segment C-2	TBD	0	0
Transmission System Segment C-3	TBD	0	0
Transmission System Segment C-4	TBD	0	0
Transmission System Segment W-1	TBD	0	0
Transmission System Segment W-2	TBD	0	0
Transmission System Segment W-3	TBD	0	0
Transmission System Segment W-4	TBD	0	0
Totals:	89	1	2



## Exhibit 10 GRP Program Monthly Meeting Log March 31, 2012

Meeting	Agenda	Location	Date	Participants
C-2 Final Design Kickoff Meeting		SJRA G&A Office	Thursday March 1, 2012	Schaumburg & Polk, Halff, GRP Program Team staff
C-3 Final Design Kickoff Meeting		SJRA G&A Office	Thursday March 1, 2012	Kimley-Horn, Halff, GRP Program Team staff
SCADA Coordination Workshop		SJRA G&A Office	Thursday March 1, 2012	Malcolm Pirnie, GRP Program Team staff
City of Houston Raw Water Meter Meeting		City of Houston Office	Friday March 2, 2012	FNI, City of Houston representatives, GRP Program Team staff
C-3 Final Design Meeting	Discuss propose WL alignment through Conroe Park North industrial park	SJRA G&A Office	Tuesday March 6, 2012	Kimley-Horn, GRP Program staff, representatives from GCEDC, ACES and City of Conroe
AECOM CMAR Workshop 1	GST aeration addition per HDR THM reduction process, chemical trench type, early work package	SJRA G&A Office	Tuesday March 6, 2012	AECOM, McCarthy, GRP Program Team staff
FNI CMAR Workshop 1	Constructability for access bridge, dam abutment and aerial pipelines, plant wide 12.47 kva electrical duct routing and design	SJRA G&A Office	Tuesday March 6, 2012	FNI, McCarthy, GRP Program Team staff
Cathodic Protection Design Meeting		SJRA G&A Office	Tuesday March 6, 2012	Malcolm Pirnie, V&A, GRP Program Team staff



**Exhibit 10 (Continued)**  
**GRP Program Monthly Meeting Log**  
**March 31, 2012**

Meeting	Agenda	Location	Date	Participants
SuddenLink Communication Meeting		McCaleb Road	Tuesday March 6, 2012	SuddenLink, Mid-South, GRP Program Team staff
Program Environmental Workshop		SJRA G&A Office	Tuesday March 6, 2012	WL Design Consultants, Halff, GPR Program Team staff
Program Corrosion Protection Workshop		SJRA G&A Office	Tuesday March 6, 2012	WL Design Consultants, V&A, GPR Program Team staff
Program Transient Analysis Workshop		SJRA G&A Office	Tuesday March 6, 2012	WL Design Consultants, AECOM, GRP Program Team staff
Program Corrosion Protection Workshop for SWF		SJRA G&A Office	Tuesday March 6, 2012	FNI, HDR, AECOM, V&A, GRP Program Team staff
Program Transient Analysis Workshop for SWF		SJRA G&A Office	Tuesday March 6, 2012	AECOM, HDR, GRP Program Team staff
HDR CMAR Workshop 1	Plant staffing and building occupancy needs, coordination with fire marshall, building louver design rated for hurricane loads	SJRA G&A Office	Wednesday March 7, 2012	HDR, McCarthy, GRP Program Team staff
TCEQ RWI Compliance Meeting		SJRA G&A Office	Monday March 12, 2012	FNI, TCEQ Representative, GRP Program Team staff
C-4 Final Design Kickoff Meeting		SJRA G&A Office	Tuesday March 13, 2012	RG Miller, KBR, GRP Program Team staff
GRP Program Review Committee Meeting		SJRA G&A Office	Monday March 19, 2012	Review Committee, GRP Program Team staff, general public



**Exhibit 10 (Continued)**  
**GRP Program Monthly Meeting Log**  
**March 31, 2012**

Meeting	Agenda	Location	Date	Participants
AECOM CMAR Workshop 2	Impacts to GST foundation, CMAR's 30% cost model, early work package	SJRA G&A Office	Tuesday March 20, 2012	AECOM, McCarthy, GRP Program Team staff
FNI CMAR Workshop 2	Requirements for conduit tagging, early work package requirements, FNI to design air burst system for cleaning submerged intake screens	SJRA G&A Office	Tuesday March 20, 2012	FNI, McCarthy, GRP Program Team staff
Traffic Control Workshop		Montgomery County Precinct 3 office	Wednesday March 21, 2012	BBI, LAN, Cobb Fendley, Montgomery County Precinct 3 and traffic/transportation staff, GRP Program Team staff
HDR CMAR Workshop 2	Size facility generators for mid day flows, add disinfection system for south transmission line to blower building, chemical trench design, PALL membrane shop drawing issue	SJRA G&A Office	Wednesday March 21, 2012	HDR, McCarthy, GRP Program Team staff





**Exhibit 10 (Continued)**  
**GRP Program Monthly Meeting Log**  
**March 31, 2012**

Meeting	Agenda	Location	Date	Participants
Monthly Southern Montgomery County GRP Program Technical Status Meeting		SJRA Woodlands Office	Thursday March 22, 2012	Joint GRP Participant representatives, GRP Program Team staff
SJRA Board of Directors Meeting		SJRA G&A Office	Thursday March 22, 2012	SJRA Board of Directors, GRP Program Team staff, general public
Program Fiber Optic Workshop		SJRA G&A Office	Friday March 23, 2012	WL Design Consultants, EMA, GRP Program Team staff
Mid-South Synergy Easement Agreement Discussion		SJRA G&A Office	Monday March 26, 2012	WL Design Consultants, GPR Program Team staff
SWRF PER Presentation		SJRA G&A Office	Tuesday March 27, 2012	Malcolm Pirnie, GRP Program Team staff
Construction Communication Plan		SJRA G&A Office	Wednesday March 28, 2012	Construction Communications Committee
Early Work Package Presentation		SJRA G&A Office	Wednesday March 28, 2012	McCarthy, GRP Program Team staff
Monthly Northern Montgomery County GRP Program Technical Status Meeting		SJRA G&A Office	Wednesday March 28, 2012	Joint GRP Participant representatives, GRP Program Team staff
TxDOT Meeting		TxDOT Conroe Office	Thursday March 29, 2012	RG Miller, TxDOT, GRP Program Team staff



**Exhibit 11**  
**GRP Amendments and Change Orders**  
**March 31, 2012**

Project	Proposal Number	Modification Number	Description	Modification		Approval Date
				Amount	Days	
GRP Building No. 1	N/A	Brookstone Change Order #2	Item 1: Lime-Flyash treatment of saturated silty-sand soils encountered at parking and driveway areas. Item 2-11: Value analysis	\$ (28,330)	0	3/16/2012
GRP Temporary Access Road	N/A	Lindsey Change Order #1	Item 1: Excavate, stockpile onsite, and replace 1500 cubic yards of unsuitable soils encountered between stations 71+00 and 69+30 with imported suitable soils.	\$ 20,250	0	3/28/2012