



# Groundwater Reduction Plan Program Monthly Progress Report - June 2012

San Jacinto River Authority





## TABLE OF CONTENTS

<b>Table of Contents</b>	<b>i</b>	4.5 Claims	4-2
<b>Acronyms and Definitions</b>	<b>ii</b>	4.6 CIP Cash Flow	4-2
<b>1.0 Planning</b>	<b>1-1</b>	4.7 CIP Budget Estimates at Completion	4-2
1.1 Strategic	1-1	4.8 Land Acquisition	4-2
1.2 Engineering and Construction	1-1	<b>5.0 Quality Assurance</b>	<b>5-1</b>
1.3 Meetings	1-1	<b>6.0 Exhibits</b>	<b>6-1</b>
<b>2.0 Schedule</b>	<b>2-1</b>		
2.1 Engineering	2-1		
2.2 Construction	2-1		
<b>3.0 Procurement</b>	<b>3-1</b>		
3.1 Solicitations	3-1		
3.2 Contract Awards	3-1		
3.3 Process and Procedures	3-1		
3.4 Look Ahead	3-1		
<b>4.0 Cost Report and Financial Considerations</b>	<b>4-1</b>		
4.1 GRP Program and GRP Project CIP Budget(s)	4-1		
4.2 Financial Report	4-1		
4.3 Invoices/Applications for Payment	4-1		
4.4 Contract Amendments and Change Orders	4-2		



## ACRONYMS AND DEFINITIONS

### Acronyms

CA&I	Construction Administration and Inspection
CM&I	Construction Management and Inspection
CMAR	Construction Manager at Risk
CSB/P	Competitive Sealed Bid/Proposal
EA	Environmental Assessment
GRP	Groundwater Reduction Plan
GST	Ground Storage Tank
HSPS	High Service Pump Station
LSGCD	Lone Star Groundwater Conservation District
LVGU	Large Volume Groundwater User
PER	Preliminary Engineering Report
RFB / Q / P	Request for Bids / Qualifications / Proposals
RWI	Raw Water Intake
SJRA	San Jacinto River Authority
SOQ	Statement of Qualifications
SWF	Surface Water Facilities (SWTP, HSPS and RWI)
SWTP	Surface Water Treatment Plant
TCEQ	Texas Commission on Environmental Quality
TWDB	Texas Water Development Board
SWRF	Surface Water Receiving Facility
WIF	Water Infrastructure Fund

### Definitions

GROUNDWATER REDUCTION PLAN (GRP)	The document developed and filed with the LSGCD indicating SJRA's plan to reduce the permitted 2009 groundwater pumpage of its GRP Participants by 30%. The GRP is administered by the SJRA, including any supplements, revisions, or amendments.
----------------------------------	---

GRP PROGRAM TEAM	SJRA staff, Program Management Consultant (Brown & Gay Engineers, Inc.) staff, and technical consultants working interdependently toward meeting the goals of the Groundwater Reduction Plan.
GRP ADMINISTRATOR	The SJRA General Manager's designee who administers the SJRA Groundwater Reduction Plan and GRP Contract with GRP Participants.
GRP CONTRACT	Contract between the SJRA and a Participant to be included in the SJRA's efforts to meet the surface water conversion requirements mandated by the LSGCD.
JOINT GRP	GRP which is prepared to include (takes into account) LVGUs who have executed a GRP Contract with the SJRA to join the SJRA's GRP. Contracted LVGUs obtain LSGCD groundwater reduction regulation compliance through the SJRA's Joint GRP without preparing and submitting a GRP.
LARGE VOLUME GROUNDWATER USER(S) (LVGU)	Any person or entity that, through a single well or a combination of wells, actually produces or is authorized by permit(s) issued by the LSGCD to produce 10 million gallons or more of groundwater annually on or after January 01, 2008.
PARTICIPANT(S)	Regulated User(s) that enters into and remains subject to a written agreement with the SJRA to be included in the SJRA's GRP and includes the legal successors or assigns of Participant(s).
REGULATED USER(S)	Any public or private entity or person that is or becomes subject to the District Regulatory Plan established by the LSGCD and includes any amendments, revisions or supplements thereto as may be adopted by the LSGCD.
SJRA GRP DIVISION	Division of the SJRA responsible for GRP compliance, and the management, administration, operation and maintenance of the surface water facilities and surface water transmission system.
SJRA EXECUTIVE MANAGEMENT	Includes SJRA's General Manager, Deputy General Manager - Operations and Deputy General Manager - Administration.



## 1.0 PLANNING

The GRP Program Team meets regularly for the purposes of setting performance expectations and goals of the GRP Program, identifying the efforts required to achieve these objectives, evaluating the effectiveness of such efforts, and modifying those efforts based upon both internal and external performance evaluations.

### 1.1 Strategic

This month's **strategic planning** centered on maintaining communication with the GRP Participants as well as the general public. Billing inserts were developed to inform the GRP Participants of the GRP pumpage rate increase that will be effective September 1, 2012. Plans were discussed for conducting another round of briefings with local elected officials. A website is being developed that will provide up-to-date information on construction progress and related traffic control. Planning continued for the GRP Program ground-breaking ceremony scheduled for July 31, 2012.

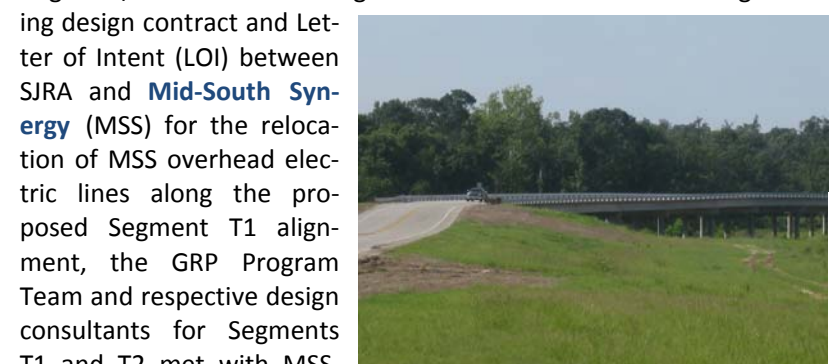
### 1.2 Engineering and Construction

Planning efforts related to engineering and construction that arose or were further acted upon this month included:

- The GRP Program Team worked this month to develop a comprehensive **review process and schedule** for the upcoming **60% and 90% design submittals** for the surface water transmission system design segments and Surface Water Receiving Facilities (SWRF). The process includes an in-depth technical review, graphics standards compliance review, and specialty reviews by members of the GRP Program Team. The goal of the process and schedule is to complete a thorough and timely review of all milestone submittals that maintains the GRP Program's overall final design and construction schedule.
- At its June 4, 2012 meeting, the Montgomery County Commissioners Court approved the **Interlocal Agreement** between Montgomery County and the SJRA. The Agreement allows for the construction of portions of the proposed surface water transmission system **Segments T1, T2 and T3** within County right-of-way (McCaleb Road and Fish Creek Thoroughfare). The respective design consultants are currently finalizing metes & bounds descriptions that will define the specific area covered in the Agreement.

- **Catahoula Aquifer** sample testing by the United States Geological Survey's (USGS) continued in June. Some general water chemistry data from the testing has been posted on the USGS website, and age dating results are expected by the end of October 2012. Once completed, these testing results will be included in the GRP Program Team's consideration of the aquifer as a potential alternative water source for future phases of the GRP Program.

- Efforts continued this month on reaching agreements for **existing utility relocations** related to the proposed surface water transmission system Segments T1, T2 and T3 along McCaleb Road/Fish Creek Thoroughfare/FM 2978. Following last month's execution of an engineering design contract and Letter of Intent (LOI) between SJRA and **Mid-South Syn-**



**Fish Creek Thoroughfare  
(Segment T-2)**

- **ergy (MSS)** for the relocation of MSS overhead electric lines along the proposed Segment T1 alignment, the GRP Program Team and respective design consultants for Segments T1 and T2 met with MSS, **Consolidated Communications**, and **SuddenLink Communications** on June 27, 2012 to further coordinate necessary utility relocations. Coordination with **Universal Gas** and **Woodland Oaks Utility** for relocations along Segment T3 began in June, as well. Coordination with these entities will continue throughout the remainder of final design.

### 1.3 Meetings

The GRP Program Team continued meeting with GRP Program stakeholders this month, in addition to its weekly GRP Program and GRP Project status meetings and monthly progress meetings with surface water transmission system and SWF design consultants. A listing of these meetings may be seen in attached Exhibit 10.

## 1.0 PLANNING (CONTINUED)

Meetings of special note that were led or attended by the GRP Program technical staff this month included the following:

- Meetings to conduct **Quality Assurance (QA) audits** were held with three (3) design consultants this month. See Section 5.0 for more information.
- A **traffic control workshop** focused on the “W” design segments of the surface water transmission system was held on June 19, 2012. GRP Program Team staff, the Construction Management and Inspection (CM&I) consultant and the respective segment design consultants were in attendance. Traffic control, including potential lane closures and detours, is a focus of the GRP Program Team, particularly on the more congested roadways of The Woodlands where installation of the transmission lines is proposed under roadway pavement. The group will continue to coordinate efforts both internally and with Montgomery County, The Woodlands Township, and The Woodlands Development Company through final design.
- On June 20, 2012, GRP Program Team staff and the **Segment C4** design consultant met with representatives of the **City of Panorama Village** to review the proposed surface water transmission system alignment through the City. The proposed alignment through the City of Panorama Village is within Texas Department of Transportation right-of-way (FM 830), passing by existing commercial and residential development and under several City streets. Coordination with the City of Panorama Village will continue during final design and into construction.



- The GRP Program Team continued coordination with **Entergy** related to their existing facilities and easements along the proposed alignments of surface water transmission system **Segments C2 and C3**. GRP Program Team staff met with a representative from Entergy to discuss alignment options in specific areas. The GRP Program Team and respective design consultants will continue to coordinate with Entergy during final design.
- The monthly **southern Montgomery County GRP Program technical status meeting** was held on June 28, 2012 at the SJRA’s Woodlands Office. Attendees included representatives from The Woodlands Township and Montgomery County. Generally, discussion included the following:
  - \* Specific issues/comments related to the recommended alignment for the proposed GRP Program surface water transmission system T1, T2, T3, W1, W2, W3 and W4 segments;
  - \* Specific issues related to easements to be obtained within The Woodlands;
  - \* Traffic Control issues along Research Forest Drive and Grogan’s Mill Road;
  - \* The status of design of GRP facilities within water plant facilities proposed to receive surface water;
  - \* Updates to the anticipated surface water transmission system final design schedule; and
  - \* Public relations/public outreach efforts by the GRP Program/GRP Administrator and GRP Program Technical Staff.

## 2.0 SCHEDULE

Currently, the GRP Program remains on schedule for the delivery of treated surface water to select Joint GRP Participants on or before January 1, 2016. A simplified GRP Program schedule may be found in attached Exhibit 1.

### 2.1 Engineering

This month the final design on the last surface water transmission system segment began while final design efforts continued on all other segments as well as the SWF and SWRF. The status of each GRP Program Consultant's Professional Services Agreement (contract) Work Order (phase and percent complete) is indicated in attached Exhibit 2.

Key schedule issues and updates related to GRP Program engineering activities include the following:

- **Surface water transmission system** final design moved forward in June with the GRP Program Team's review of **60% drawings for Segments T2, W1B and C4**. Submittals of 60% drawings on the other segments are scheduled to be staggered over the coming months, with 90% drawings submittals following thereafter. **Segment C1** final design Notice to Proceed was issued June 1, 2012, and efforts are underway.
- **Surface Water Receiving Facilities (SWRF)** final design effort continued this month. The SWRF design consultant continued close coordination with the respective transmission system design consultants and operators/owners for each SWRF. Submittal of 60% drawings to the GRP Program Team for review is scheduled for in July 2012.
- Final design of the **Surface Water Facilities (SWF)** progressed this month. While coordination with the GRP Program Team, CMAR, and other GRP Program and Project consultants continued, the SWF design consultants also coordinated among each other on the design of the security system, fire protection system, and chemical trenches for the SWF. This month, 90% drawings for both the Raw Water Intake (RWI) and High Service Pump Station (HSPS) and 60% drawings for the Surface Water Treatment Plant (SWTP) were submitted for review by the GRP Program Team and CMAR.

- The GRP Program Team met over the first week of June to review comments from the surface water transmission system design consultants on the **draft master guide technical specifications**. Final drafts were prepared and provided to the design consultants for review. Comments were received and compiled, and the GRP Program Team plans to review the comments and finalize the technical specifications for use by the design consultants by the end of July 2012.
- Texas Water Development Board (TWDB) approval of the **final Environmental Assessment (EA)** was received June 21, 2012. This approval allows the construction of Phase I of the GRP Program as well as the release of escrowed funds from the TWDB Series 2011 "A" Bond Issue for use by the GRP Program for land acquisition.

### 2.2 Construction

Key issues and updates related to the schedules of GRP Program construction activities include:

- Construction of the **AquaTexas sanitary sewer and access road relocation** progressed well in June. The new access road and lift station are complete, and the contractor is making preparations for the delivery of the auxiliary generator. The project is ahead of schedule and final completion is anticipated in July 2012. See Exhibit 12 for construction photos.
- Construction began in mid-June on the proposed **fiber optic line to serve GRP Building No. 1**. The project is approximately 40% complete. Construction is on schedule and anticipated to be complete on or by the final completion date of August 12, 2012.





## 2.0 SCHEDULE (CONTINUED)

- **GRP Building No. 1** construction made significant progress this month. Permanent power and the HVAC Systems are online with "finish-work" well underway. Site paving and sidewalks are complete with final grading and landscaping following shortly. The project remains on schedule and below the original budget. See Exhibit 12 for construction photos.
- Progress continued in June on the construction of the **SWF temporary access road**. The contractor has completed the roadway construction, final grading, fencing, asphalt entrance, and is currently working to complete hydromulching and the access gate operator. The roadway has been opened to allow access to the other construction projects within and near the SWF site. The project is currently ahead of schedule and final completion is anticipated in July 2012. See Exhibit 12 for construction photos.
- The **Construction Manager-at-Risk (CMAR)** continued working with the SWF design consultants this month as final design continued. Focus this month continued to be on the procurement process for Early Work Package No. 2. For more information on the Early Work Package No. 2 solicitation, see subsection 3.1. This month, the CMAR also completed the 60% cost model for the RWI and presented it to the GRP Program Team for review. The 60% cost model for the HSPS is anticipated to be submitted for review in July 2012.
- Surface water transmission system pre-construction phase efforts by the **Construction Management and Inspection (CM&I)** consultant continued this month. While continuing to attend regular GRP Program and Project status meetings to stay abreast of progress, the CM&I consultant completed constructability reviews on the 60% drawings for Segments T1, T2, C4 and W1B, updated their overall design and construction schedule, and prepared and presented to the GRP Program Team a draft Geographic Information System (GIS) compatible traffic communication plan. The CM&I consultant will continue to provide construction-focused support during the final design phase of the transmission system.



### 3.0 PROCUREMENT

This month the GRP Program Team continued to develop required GRP Program and GRP Project scopes of work for design and consultation services, and construction contract packages. Current solicitations, contract negotiations and awards, and a look ahead are included in this section.

#### 3.1 Solicitations

The GRP Program Team has developed and made available, received bids/proposals/Statements of Qualifications (SOQs), and/or selected a firm for award on the following solicitations this month:

- **Construction Materials Testing (CMT):** After eleven (11) SOQs were received in May, the GRP Program Team reviewed the SOQs submitted this month. **Geotest Engineering, Inc.** was selected to provide CMT services for the SWF construction. A PSA and Work Order have been negotiated and will be presented to the GRP Review Committee and the SJRA Board of Directors for consideration at their July 2012 meetings. Work order negotiations for CMT services for the transmission system are anticipated to begin later this year or early 2013.
- **Early Work Package No. 2:** Proposals were received June 7, 2012. The work package includes site and concrete work for the HSPS, GSTs, and RWI. The CMAR and GRP Program Team reviewed the proposals during in June and Amendment No. 2 to the CMAR contract will be presented to the GRP Review Committee and SJRA Board of Directors for consideration at their July 2012 meetings.

#### 3.2 Contract Awards

The following GRP Program contracts/work orders were presented to the GRP Review Committee Meeting on June 25, 2012 and to the SJRA Board of Directors Meeting on June 28, 2012, and were authorized by the SJRA Board of Directors for execution by the SJRA General Manager:

- **CDM Smith, Inc.:** Professional Services Agreement (PSA) and Work Order No. 1 for **construction administration and inspection services for the SWF** (\$5,348,633.00).

#### 3.3 Process and Procedures

There were no significant changes to the procurement process or procedures this month. The GRP Program continues to utilize traditional and

alternative project delivery methods in the procurement of consultant and contractor services.

#### 3.4 Look Ahead

The table below provides a very general look ahead at known and anticipated GRP Program professional services and construction contractor solicitations and contract awards. Solicitations may be combined, modified, or canceled and indicated dates or time frames may be modified as deemed necessary.

PROJECT/ SERVICES	PURPOSE	ADVERTISEMENT/ NEGOTIATION	BOARD MEETING
PROPOSAL PACKAGE #2 - EARLY WORK PACKAGE	SITE AND CONCRETE WORK FOR THE HSPS, GSTS, AND RWI	MAY 2012; RFP	JULY 26, 2012
METES & BOUNDS PREPARATION	METES & BOUNDS FOR EASEMENT ACQUISITION FOR TRANSMISSION SYSTEM SEGMENT C1	JUNE 2012; WORK ORDER	JULY 26, 2012
RWI FINAL DESIGN	FINAL DESIGN OF AIR PURGE SYSTEM	JUNE 2012; WORK ORDER	JULY 26, 2012
HSPS AND GSTS FINAL DESIGN	FINAL DESIGN OF AIR STRIPPING SYSTEM	JUNE 2012; WORK ORDER	JULY 26, 2012
RWI CONSTRUCTION PHASE SERVICES	CONSTRUCTION PHASE SERVICES FOR THE RWI	JUNE 2012; WORK ORDER	JULY 26, 2012
HSPS AND GSTS CONSTRUCTION PHASE SERVICES	CONSTRUCTION PHASE SERVICES FOR THE HSPS AND GSTS	JUNE 2012; WORK ORDER	JULY 26, 2012
CONSTRUCTION MATERIALS TESTING (CMT)	CMT SERVICES FOR THE SWF	JUNE 2012; RFQ	JULY 26, 2012
CONSTRUCTION MANAGEMENT & INSPECTION (CM&I)	CM&I SERVICES DURING CONSTRUCTION PHASE OF TRANSMISSION SYSTEM	JULY 2012; WORK ORDER	TBD
CONSTRUCTION MATERIALS TESTING (CMT)	CMT SERVICES FOR TRANSMISSION SYSTEM AND SWF	TBD; WORK ORDER	TBD





## 4.0 COST REPORT AND FINANCIAL CONSIDERATIONS

### 4.1 GRP Program and GRP Project CIP Budget(s)

Through this month, the GRP Program remains under its \$500,000,000.00 Capital Improvement Project (CIP) Program planning budget and forecasts continue to indicate it will be completed under budget (see also subsection 4.6 and Exhibit 7). A summary of the GRP Program's CIP budget and cost considerations as reported to the GRP Review Committee and the SJRA Board of Directors is provided as attached Exhibit 3.

A summary of the SJRA GRP Division's Fiscal Year 2012 (FY12) operating budget (revenue and expenditures) is provided as Exhibit 4. The budget includes all normal and customary expenses for operating a utility based, non-profit business, including debt service, and is developed annually for approval by the SJRA Board of Directors.

With the closing of the \$175,000,000.00 bond issue on June 8, 2012, the GRP Program is currently operating under the SJRA Board of Director's authorized CIP budget of \$347,400,358.49 (net - \$317,265,038.04). The funding available in the CIP budget allows the SJRA to secure all of the resources required to perform professional services, construction services, and procure long lead time equipment during the design phase of the GRP Program.

### 4.2 Financial Report

Funding sources presently applied towards the GRP Program CIP budget include the TWDB's Water Infrastructure Fund (WIF; \$21,500,000.00 [gross]; \$21,029,662.92 [net]), the sale of open market Special Project Revenue Bonds, Series 2011 (\$83,430,358.49 [gross]; \$73,522,352.58 [net]), and TWDB "D" Funds, Series 2011A (\$67,470,000.00 [gross]; \$61,552,571.67 [net]) and Series 2012 (\$175,000,000.00 [gross]; \$161,160,450.87 [net]). Approved funding to-date represents approximately 63.5% of the planned \$500,000,000.00 Program budget. The TWDB Board approved the \$230,530,000.00 bond issue at its June 21, 2012 meeting. The GRP Program's funding, contracted commitments, and forecasted expenditures are summarized in Table 4.1 and further detailed in attached Exhibits 5A, 5B and 6.

Please note that financial reports do not include investment income.

**TABLE 4.1 - GRP PROGRAM FUNDING AND CONTRACTED COMMITMENTS SUMMARY**

	PREVIOUS (THRU 5/31/12)	JUNE 2012
A. APPROVED FUNDING	\$172,400,358.49	\$175,000,000.00
B. AVAILABLE FUNDING AFTER COSTS	\$156,104,587.17	\$317,265,038.04
C. APPROVED CONTRACTS	\$69,815,285.40	\$5,345,692.32
D. PROJECT CLOSE OUT	\$37,248.33	\$111,160.32
E. UNCONTRACTED FUNDING (B - C + D; B JUNE - C - C JUNE + D + D JUNE)	\$86,326,550.10	\$242,252,468.97
F. INVOICED	\$32,552,116.66	\$5,572,958.62
G. REMAINING FUNDS (B - F; B - F - F JUNE)	\$123,552,470.51	\$279,139,962.76

### 4.3 Invoices/Applications for Payment

GRP Program level and GRP Project level consultant Invoices and/or construction contractor Applications for Payment received through July 10, 2012 are represented in the above table (Item F, June 2012). A detailed breakdown of consultant invoices and/or construction contractor pay applications received for services performed this month appears in Table 4.2.

**TABLE 4.2 - GRP PROGRAM CONSULTANT INVOICE AND CONTRACTOR PAY APPLICATION SUMMARY**

	PREVIOUS (THRU 5/31/12)	JUNE 2012
ENGINEERING & SPECIALTY CONSULTANT (PROGRAM)	\$9,634,187.63	\$351,869.66
ENGINEERING & SPECIALTY CONSULTANT (PROJECT)	\$20,608,160.81	\$4,201,180.98
CONSTRUCTION CONTRACTOR / CMAR	\$2,309,768.22	\$1,019,907.98
TOTALS:	\$32,552,116.66	\$5,572,958.62

## 4.0 COST REPORT AND FINANCIAL CONSIDERATIONS (CONTINUED)

### 4.4 Contract Amendments and Change Orders

This month, three (3) change orders were approved by the SJRA General Manager: one (1) each on GRP Building No. 1, SWF temporary access road, and AquaTexas sanitary sewer and access road relocation construction projects. Further details of the change orders are included in Exhibit 11.

### 4.5 Claims

No claims were identified this month.

### 4.6 CIP Cash Flow

The GRP Program CIP cash flow through SJRA FY2015 reflects known expenditures through June 2012 and estimates for future expenditures were updated this month. All active and currently identified future GRP Program Projects and initiatives are included in the cash flow. A graph of forecasted monthly expenditures from the referenced cash flow is attached as Exhibit 7.

### 4.7 CIP Budget Estimates at Completion

#### **4.7.1 GRP Program**

With the recently closed \$175,000,000.00 bond issue, a comparison of in-place funding against currently contracted and identified near term GRP Program contracting needs (plus contingency) is being performed.

The **total gross funds** (including capitalized interest) required to execute Phase I of the GRP Program are currently estimated at \$577,930,358.49.



#### **4.7.2 GRP Projects**

The GRP Program Projects remained within their approved contract budgets through this month. Exhibit 8 indicates each active GRP Program Project and GRP Program contract forecasted estimate at completion (EAC). Additionally, all current GRP Program contracts, including their respective SJRA Board of Directors approved budgeted amounts and percents complete, are listed in Exhibit 2.

### 4.8 Land Acquisition

In June, the GRP Program team continued to work with its team of land acquisition consultants indentifying, defining, and taking the steps to acquire easements for the surface water transmission system. Substantial progress was made this month in preparing metes & bounds descriptions defining easements to be acquired. As these descriptions are completed, focus turns to contacting the respective property owners and beginning negotiations for acquisition of the easements. A cumulative summary of easement acquisition activity is provided in attached Exhibit 9.



## 5.0 QUALITY ASSURANCE

### *Final Design*

This month's QA activity associated with final design deliverables produced by the engineering consultants is as follows:

1. **Jones & Carter (T1)** - Comments on the 60% drawings were provided by the GRP Program Team; Submittal of the 60% drawings for graphic standards compliance is anticipated in mid-July 2012.
2. **Klotz (T2)** - Comments on the 60% drawings were provided by the GRP Program Team; Submittal of the 60% drawings for graphic standards compliance is anticipated in early-July 2012.
3. **Lockwood, Andrews & Newnam (W1B)** - Comments on the 60% drawings were provided by the GRP Program Team; Submittal of the 60% drawings for graphic standards compliance is anticipated in mid-July 2012.
4. **R.G. Miller (C4)** - Comments on the 60% drawings were provided by the GRP Program Team; 60% drawings were submitted for graphic standards compliance review late this month and are currently under review.
5. **AECOM (HSPS and GSTs)** - 90% drawings and specifications were submitted to the GRP Program Team on June 26, 2012 and are currently under review.
6. **Freese and Nichols (RWI)** - 90% drawings and specifications were submitted to the GRP Program Team on June 4, 2012 and are currently under review.
7. **HDR (SWTP)** - 60% drawings and specifications were submitted to the GRP Program Team on June 20, 2012 and are currently under review.

As final design continues and milestone submittals are received, the GRP Program Team will review and provide comments, as applicable to each milestone. The review will be based on submittal compliance with the GRP Program's Design Standards and Criteria Manual, completeness per Program Management Plan (PMP) Section 14.0 – Quality Management and PMP Section 21.0 – Design Management, and general project understanding.

### *Quality Assurance (QA) Audits*

In accordance with PMP Section 14.0 – Quality Management, the GRP Program Team continued conducting QA audits of the design consultants this month. The focus of the audits is to evaluate each consultant's compliance with the GRP Program policies and procedures included in the PMP as well as their own QA plans included in their Consultant Project Management Plans (CPMP). In June, audits were performed with Cobb, Fendley & Associates (June 8, 2012), R.G. Miller (June 8, 2012), and Jones & Carter (June 14, 2012). The remaining consultants will be audited over the next few months. After each audit, the QA Auditor summarizes and transmits his findings to the design consultant for review and corrective action as necessary. If corrective action is necessary, a written response to the QA Auditor from the design consultant summarizing their understanding of the corrective action and implementation timeline is required.

### *Pre-Construction*

This month the surface water transmission system Construction Management and Inspection (CM&I) consultant has continued to provide pre-construction services in the form of constructability reviews of milestone design submittals. The CM&I consultant will continue to provide these services through final design of the surface water transmission system.

### *Construction*

The SJRA Construction Inspectors continue to perform quality assurance efforts on the active construction projects at or near the SWF site, including regular visits to the project site to monitor and document observed progress and confirm compliance with the construction contract. Similar quality assurance efforts will be performed once construction begins on the SWF, SWRF and surface water transmission system later this year.

## 6.0 EXHIBITS

Exhibit 1 - GRP Program Schedule

Exhibit 2 - Selected GRP Program Contracts

Exhibit 3 - Monthly GRP Program Financing Report

Exhibit 4 - GRP Unaudited Schedule of Revenues & Expenses - Actual & Budget and Clarification of Actual & Budget Variances

Exhibit 5A - GRP Program Capital Improvements Program Estimate-to-Complete

Exhibit 5B - GRP Program Fund Data

Exhibit 6 - Funding Source Summary

Exhibit 7 - GRP Monthly Forecasted Expenditures for Contracted Services

Exhibit 8 - Estimate at Completion (EAC) for Current Authorizations

Exhibit 9 - Land Acquisition Summary

Exhibit 10 - GRP Program Monthly Meeting Log

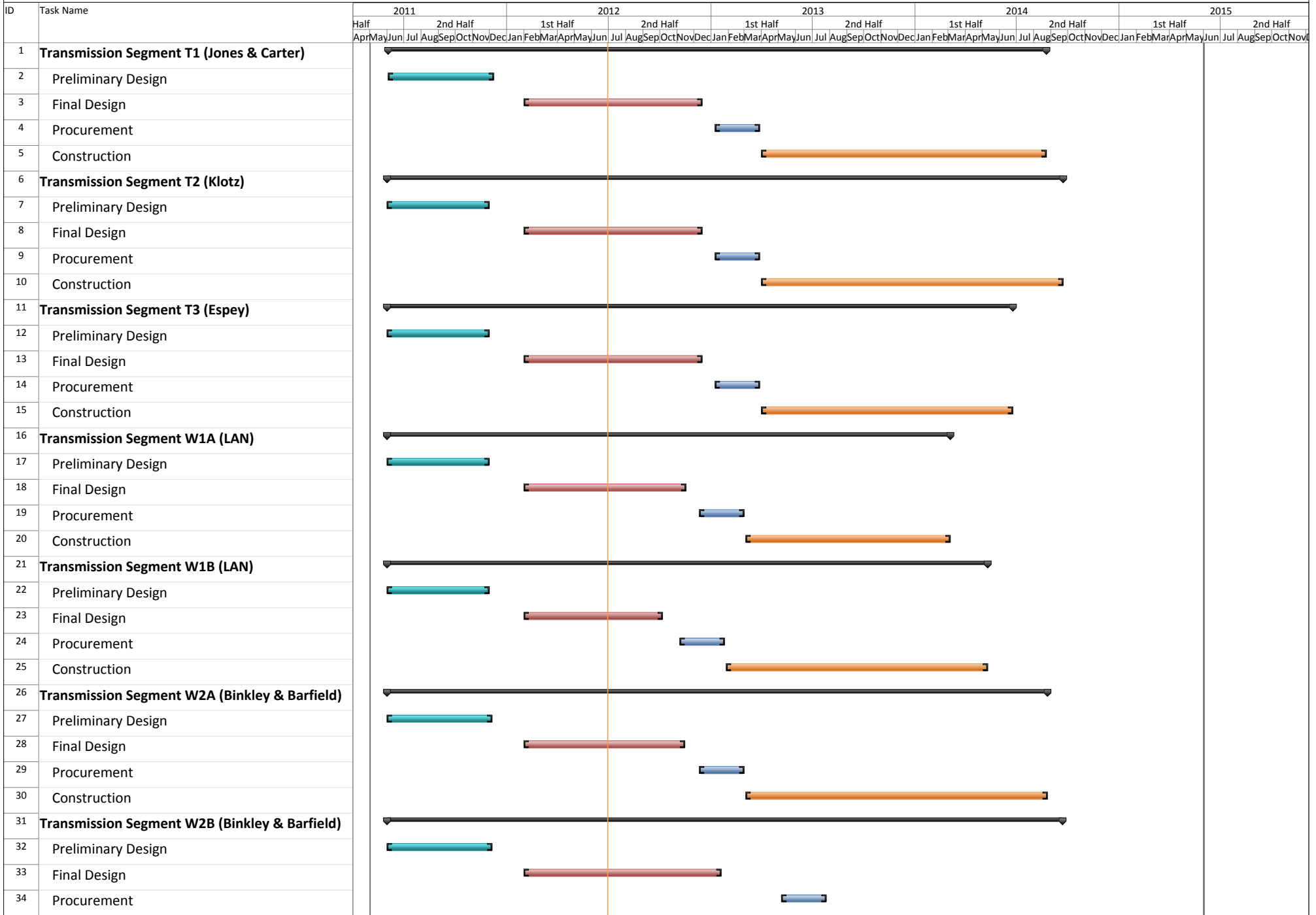
Exhibit 11 - GRP Amendments and Change Orders

Exhibit 12 - Construction Photos





# Exhibit 1 - GRP Program Schedule





## Exhibit 1 - GRP Program Schedule

ID	Task Name	2011		2012				2013				2014				2015																					
		Half		1st Half		2nd Half		1st Half		2nd Half		1st Half		2nd Half		1st Half		2nd Half																			
		Apr	May	Jun	Jul	Aug	Sep	Oct	Nov	Dec	Jan	Feb	Mar	Apr	May	Jun	Jul	Aug	Sep	Oct	Nov	Dec	Jan	Feb	Mar	Apr	May	Jun	Jul	Aug	Sep	Oct	Nov	Dec			
69	Procurement																																				
70	Construction																																				
71	<b>Receiving Facilities (Malcolm Pirnie) North Package</b>																																				
72	Preliminary Design																																				
73	Final Design																																				
74	Procurement																																				
75	Construction																																				
76	<b>Receiving Facilities (Malcolm Pirnie) South Package</b>																																				
77	Preliminary Design																																				
78	Final Design																																				
79	Procurement																																				
80	Construction																																				
81	<b>Water Treatment Plant (HDR)</b>																																				
82	Preliminary Design																																				
83	Final Design																																				
84	Early Works Package Procurement																																				
85	Early Work Package Construction																																				
86	Construction																																				
87	<b>High Service Pump Station (AECOM)</b>																																				
88	Preliminary Design																																				
89	Final Design																																				
90	Early Works Package Procurement																																				
91	Early Work Package Construction																																				
92	Construction																																				
93	<b>Raw Water Intake &amp; Pump Station (FNI)</b>																																				
94	Preliminary Design																																				
95	Final Design																																				
96	Early Works Package Procurement																																				
97	Early Work Package Construction																																				
98	Construction																																				



## Exhibit 2 Selected GRP Program Contracts June 30, 2012

GRP Program Projects - Design										
Engineering Consultant	Project Name	PER Fee	Percent Complete	Metes & Bounds Fee	Percent Complete	Final Design Fee	Percent Complete	CPS Fee	Percent Complete	Engineer's Construction Cost Estimate
Jones & Carter	Transmission Segment T1	\$ 923,031	100%	*		\$ 975,317	65%			\$ 19,251,600
Klotz	Transmission Segment T2	\$ 623,565	100%	\$ 170,848	70%	\$ 819,546	60%			\$ 19,800,000
Espey	Transmission Segment T3	\$ 553,123	100%	\$ 146,847	45%	\$ 855,184	45%			\$ 15,720,000
Lockwood, Andrews, Newnan	Transmission Segment W1	\$ 920,621	100%	\$ 96,690	83%	\$ 1,086,983	60%			\$ 17,600,400
Binkley & Barfield, Inc.	Transmission Segment W2	\$ 956,237	100%	*		\$ 1,360,807	55%			\$ 18,906,300
Cobb Fendley	Transmission Segment W3	\$ 1,161,967	100%	\$ 535,228	40%	\$ 1,555,247	55%			\$ 19,935,207
LJA	Transmission Segment W4	\$ 364,730	100%	*		\$ 528,856	10%			\$ 6,716,718
Dannenbaum	Transmission Segment C1	\$ 822,823	100%	*		\$ 490,523	0%			\$ 6,455,000
Schaumburg & Polk	Transmission Segment C2	\$ 1,003,246	100%	\$ 309,980	10%	\$ 685,068	35%			\$ 13,994,727
Kimley-Horn	Transmission Segment C3	\$ 490,657	100%	\$ 159,740	30%	\$ 616,103	35%			\$ 7,420,000
R.G. Miller	Transmission Segment C4	\$ 217,507	100%	\$ 18,016	50%	\$ 281,449	65%			\$ 4,640,156
Malcolm Pirnie	Receiving Facilities	\$ 598,651	100%	*		\$ 1,209,451	45%			\$ 9,427,000

\*Metes and bounds efforts are included in the final design survey work order.





## Exhibit 2 Selected GRP Program Contracts June 30, 2012

GRP Program Projects - Design										
Engineering Consultant	Project Name	PER Fee	Percent Complete	Metes & Bounds Fee	Percent Complete	Final Design Fee	Percent Complete	CPS Fee	Percent Complete	Engineer's Construction Cost Estimate
HDR, Inc.	Water Treatment Plant	\$ 3,104,114	99%			\$ 7,694,130	60%			\$ 135,000,000
AECOM, Inc.	High Service Pump Station	\$ 1,224,776	100%			\$ 1,872,583	90%			\$ 39,960,000
Freeze and Nichols, Inc.	Raw Water Intake and Pump Station	\$ 1,249,700	100%			\$ 1,284,900	90%			\$ 21,000,000
ACES	Access Rd. & San. Swr. Relocation; Temp. SWF Access Rd.					\$ 435,000	100%	\$ 50,000.00	52%	\$ 577,000; \$ 1,500,000
EMA, Inc.	Fiber Optic System	\$ 161,390	100%			\$ 279,899	40%			\$ 5,364,000
<b>TOTALS</b>		<b>\$ 14,376,138</b>	<b>-</b>	<b>\$ 1,437,349</b>	<b>-</b>	<b>\$ 22,031,046</b>	<b>-</b>	<b>\$ 50,000</b>	<b>-</b>	<b>\$ 363,268,108</b>



## Exhibit 2

### Selected GRP Program Contracts

#### June 30, 2012

GRP Program Consultant Contracts			
Engineering Consultant	Program Consultant Service	Total Fee of Work Orders	Percent Complete
Brown & Gay Engineers	Program Management	\$ 7,244,751	81%
Raba Kistner	Geotechnical	\$ 145,260	36%
LandTech	Survey	\$ 514,524	87%
Halff	Environmental	\$ 1,065,324	98%
Property Acquisition Services	Land Acquisition	\$ 1,415,550	45%
V&A	Cathodic Protection	\$ 511,978	30%
KDM	Land Acquisition	\$ 401,700	40%
Andrews Kurth	Legal	\$ 900,000	69%
Mike Bellar	Legal	\$ 100,000	18%
Brown & Caldwell	CMAR Contract Development Assistance	\$ 118,286	79%
Greenburg Traurig	Legal	\$ 200,000	48%
AECOM	Transient	\$ 311,400	50%
McCarthy	CMAR	\$ 10,346,793	64%
KBR	CM&I	\$ 533,433	23%
<b>Total</b>		<b>\$ 23,808,998</b>	



## Exhibit 2 Selected GRP Program Contracts June 30, 2012

GRP Program Projects - Construction			
Construction Project	Construction Contractor	Contract Amount	Percent Complete
GRP Building No. 1	Brookstone	\$ 1,999,728	79%
GRP Temporary Access Road	Lindsey Construction	\$ 975,897	87%
Aqua Texas Sanitary Sewer and Road Relocation	Randy Roan	\$ 522,733	68%
GRP Building No. 1 Fiber Line	Preferred Technologies	\$ 257,340	40%
<b>Total</b>		<b>\$ 3,755,697</b>	



## Exhibit 3

# Monthly GRP Program Financing Report

### Fiscal Year 2012

Through 6/30/2012

	WIF Funds	2011 Special Projects Revenue Bonds	TWDB 2011 'D' Fund	2012 Special Projects Revenue Bonds	Totals
<b>A. Program Budget</b>					
Bond Issue Amount	\$ 21,500,000.00	\$ 83,430,358.49	\$ 67,470,000.00	\$ 175,000,000.00	\$ 347,400,358.49
<b>Total Investment</b>	<b>\$ 21,500,000.00</b>	<b>\$ 83,430,358.49</b>	<b>\$ 67,470,000.00</b>	<b>\$ 175,000,000.00</b>	<b>\$ 347,400,358.49</b>
<b>B. Contracted Costs</b>					
Contracts Completed	\$ 13,607,639.85	\$ 1,534,701.06	\$ -		\$ 15,142,340.91
Current Contract Values	\$ 7,403,542.04	\$ 51,220,771.29	\$ 1,119,653.90		\$ 59,743,967.23
Change Orders		\$ 274,669.58			\$ 274,669.58
Project Close Out	\$ (49,459.65)	\$ (98,949.00)			\$ (148,408.65)
<b>Total</b>	<b>\$ 20,961,722.24</b>	<b>\$ 52,931,192.93</b>	<b>\$ 1,119,653.90</b>	<b>\$ -</b>	<b>\$ 75,012,569.07</b>
<b>C. Expenditures</b>					
Paid Previous Fiscal Years	\$ 8,359,940.89	\$ 85,949.90	\$ -	\$ -	\$ 8,445,890.79
Paid Current Fiscal Year	\$ 11,570,909.50	\$ 15,599,989.45	\$ 186,624.00	\$ -	\$ 27,357,522.95
Issuance Costs	\$ 470,337.08	\$ 2,049,764.39	\$ 751,195.33	\$ 970,374.13	\$ 4,241,670.93
Capitalized Interest	\$ -	\$ 7,858,241.52	\$ 5,166,233.00	\$ 12,869,175.00	\$ 25,893,649.52
<b>Total</b>	<b>\$ 20,401,187.47</b>	<b>\$ 25,593,945.26</b>	<b>\$ 6,104,052.33</b>	<b>\$ 13,839,549.13</b>	<b>\$ 65,938,734.19</b>
<b>D. Remaining</b>					
Uncontracted Funds	\$ 67,940.68	\$ 20,591,159.65	\$ 60,432,917.77	\$ 161,160,450.87	\$ 242,252,468.97
Fund Balance *	\$ 1,098,812.53	\$ 57,836,413.23	\$ 61,365,947.67	\$ 161,160,450.87	\$ 281,461,624.30

\*Excluding net investment income



## Exhibit 4

### San Jacinto River Authority Groundwater Reduction Plan

#### Unaudited Schedule of Revenues & Expenses - Actual & Budget For the Nine Months Ending May 31, 2012

	May			Year To Date		
	Actual	Budget	Variance	Actual	Budget	Variance
<b>OPERATING REVENUES</b>						
Water sales						
GRP pumping fees	\$ 1,376,591.30	\$ 1,193,651.25	\$ 182,940.05	\$ 10,019,248.88	\$ 10,280,346.75	\$ (261,097.87)
<b>TOTAL OPERATING REVENUES</b>	<b>1,376,591.30</b>	<b>1,193,651.25</b>	<b>182,940.05</b>	<b>10,019,248.88</b>	<b>10,280,346.75</b>	<b>(261,097.87)</b>
<b>OPERATING EXPENSES</b>						
Payroll & employee benefit expenses	143,948.53	229,796.47	85,847.94	1,273,292.39	2,130,412.75	857,120.36
Professional fees	16,791.90	18,922.00	2,130.10	4,828.68	493,698.00	488,869.32
Purchased & contracted services	3,634.36	31,217.00	27,582.64	71,205.96	297,949.00	226,743.04
Supplies, materials & utilities	9,498.73	19,288.75	9,790.02	1,735,966.84	2,384,407.75	648,440.91
Maintenance repairs, parts & rentals	668.90	1,167.33	498.43	10,855.43	10,497.97	(357.46)
General & administration	48,161.36	84,439.88	36,278.52	407,299.62	759,958.92	352,659.30
<b>TOTAL OPERATING EXPENSES</b>	<b>222,703.78</b>	<b>384,831.43</b>	<b>162,127.65</b>	<b>3,503,448.92</b>	<b>6,076,924.39</b>	<b>2,573,475.47</b>
<b>NON-OPERATING REVENUES &amp; EXPENSES</b>						
Investment income	108,118.01	15,410.33	92,707.68	386,897.02	138,692.97	248,204.05
Other revenues				569.16		569.16
Depreciation	(3,852.14)		(3,852.14)	(30,163.54)		(30,163.54)
Interest expense	(531,535.29)	(144,458.67)	(387,076.62)	(4,076,919.79)	(4,507,398.86)	430,479.07
Amortized debt issuance expense	(10,947.33)		(10,947.33)	(88,026.73)		(88,026.73)
<b>TOTAL NON-OPERATING</b>	<b>(438,216.75)</b>	<b>(129,048.34)</b>	<b>(309,168.41)</b>	<b>(3,807,643.88)</b>	<b>(4,368,705.89)</b>	<b>561,062.01</b>
<b>NET INCOME (LOSS)</b>	<b>\$ 715,670.77</b>	<b>\$ 679,771.48</b>	<b>\$ 35,899.29</b>	<b>\$ 2,708,156.08</b>	<b>\$ (165,283.53)</b>	<b>\$ 2,873,439.61</b>

**Exhibit 4**  
**GRP Division**  
**Clarification of Actual & Budget Variances**  
(in thousands)

Category	Driver	April 2012	May 2012	FYTD 2012
GRP Pumping Fees	Usage variance Sep-Nov due to drought conditions; usage variance Dec-Apr due to wet conditions	(249)	183	(261)
Payroll and related expenses	Actual labor and related expenses less than budgeted	91	89	861
Professional Fees	Legal, Engineering & Consultants budgeted straight-line, should correct over time	17	1	348
	Staffing Services budgeted straight-line, should correct over time	2	1	141
Purchased & Contracted Services	Contracted Services budgeted straight-line, should correct over time	27	24	200
	Water Conservation & Public Education Activities budgeted straight-line, should correct over time	5	-	23
Supplies, Materials, Utilities, Maintenance, Repairs, Parts & Rentals	Additional Water Supply, lump sum budget in Sept., should correct over time	-	-	500
	Reservation Fees: COH \$100,861.24 due to 2011 true-up	-	-	82
	SJRA: payment made in February			
	Supplies, Materials, Utilities, Maintenance, Repairs, Parts & Rentals expenses less than budgeted	8	10	66
General & Administration	Actual labor and related expenses less than budgeted	50	36	353
Non-Operating	Non-Operating expenses more than budgeted; largely driven by bond interest expense	2,794	(309)	561
		<b>2,745</b>	<b>36</b>	<b>2,874</b>

## Exhibit 5A

### GRP Program Capital Improvements Program Estimate-to-Complete

SERVICES	ESTIMATE-TO-COMPLETE	
<b>Pre-Engineering Phase Services</b>	<b>\$</b>	<b>4,747,354</b>
(GRP Development, Environmental Studies, Pilot Plant, Surface Water Treatment Plant Site Survey)		
<b>Engineering Phase Services</b>	<b>\$</b>	<b>45,278,659</b>
(Planning, Preliminary Engineering, Final Engineering, Geotechnical, Survey, Metes & Bounds, Subsurface Utility Investigation, Environmental)		
<b>Construction Phase Services</b>	<b>\$</b>	<b>29,652,113</b>
(Early Equipment Procurement, Engineering Services During Construction, Construction Management & Inspection [Transmission System], Construction Administration & Inspection [SWF], Material Testing)		
<b>Construction</b>	<b>\$</b>	<b>370,672,810</b>
(Surface Water Transmission System, Raw Water Intake and Pump Station, Surface Water Treatment Plant, High Service Pump Station and Ground Storage Tanks, Surfacewater Receiving Facilities, Infrastructure, Buildings, Roadways, Site Security, Access Roadways)		
<b>Building No. 1; Access Road; Vegetative Buffer; Construction Materials Testing; SWF Site Vegetation Management; Sanitary Sewer/Access Rd. Relocation</b>	<b>\$</b>	<b>3,640,666</b>
<b>Transmission Segment C1 - Construction</b>	<b>\$</b>	<b>7,000,000</b>
<b>Transmission Segment C2 - Construction</b>	<b>\$</b>	<b>13,994,727</b>
<b>Transmission Segment C3 - Construction</b>	<b>\$</b>	<b>7,420,000</b>
<b>Transmission Segment C4 - Construction</b>	<b>\$</b>	<b>4,662,706</b>
<b>Transmission Segment T1 - Construction</b>	<b>\$</b>	<b>17,368,800</b>
<b>Transmission Segment T2 - Construction</b>	<b>\$</b>	<b>19,800,000</b>
<b>Transmission Segment T3 - Construction</b>	<b>\$</b>	<b>15,720,000</b>
<b>Transmission Segment W1 - Construction</b>	<b>\$</b>	<b>22,453,000</b>
<b>Transmission Segment W2 - Construction</b>	<b>\$</b>	<b>19,923,204</b>
<b>Transmission Segment W3 - Construction</b>	<b>\$</b>	<b>17,000,000</b>
<b>Transmission Segment W4 - Construction</b>	<b>\$</b>	<b>6,000,000</b>
<b>Receiving Facilities - Construction</b>	<b>\$</b>	<b>24,802,000</b>
<b>SWF Work Package No. 2</b>	<b>\$</b>	<b>28,263,870</b>
<b>SWF Work Package No. 3</b>	<b>\$</b>	<b>62,672,059</b>
<b>SWF Work Package No. 4 (GMP)</b>	<b>\$</b>	<b>86,327,689</b>
<b>Transmission System Fiber Optic - Construction</b>	<b>\$</b>	<b>5,364,000</b>
<b>Permanent Access Roadway Construction</b>	<b>\$</b>	<b>8,000,000</b>
<b>Program Management</b>	<b>\$</b>	<b>12,329,215</b>
(GRP Program Management, Survey, Geotechnical, Transient, Corrosion, Legal Consultants)		
<b>Land Acquisition</b>	<b>\$</b>	<b>16,267,645</b>
(Legal, Appraisal, Title Research, Land Acquisition Consultants)		
<b>Total:</b>	<b>\$</b>	<b>478,947,797</b>

Bond issuance costs are not included.



## Exhibit 5B

### GRP Program Fund Data

July 16, 2012

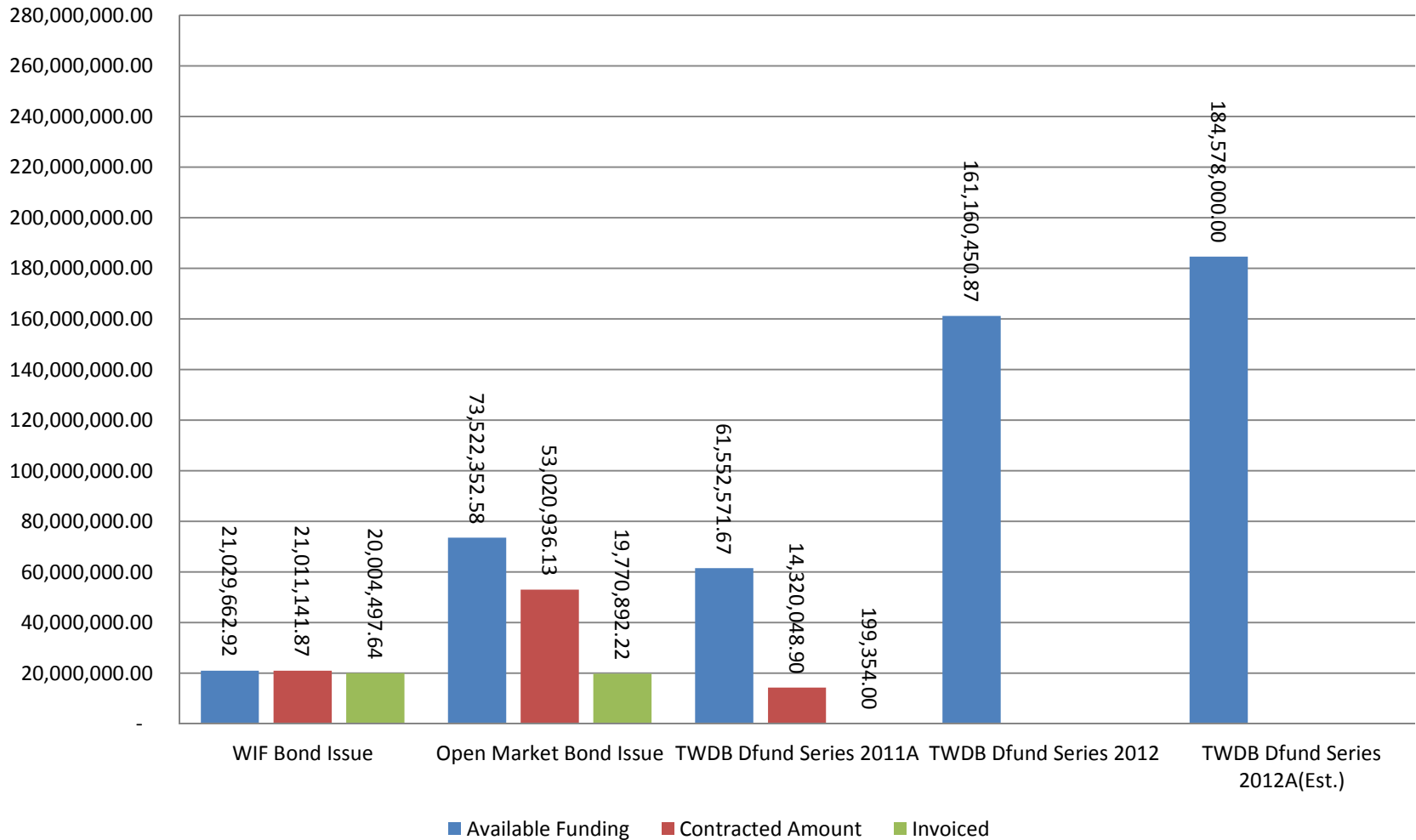
Funding Source	Amount Authorized by Board To-Date	Interest Rate	Bond Costs	Capitalized Interest	Debt Service Reserve Fund	Amount Currently Available	Pending Funding Source	Invoiced To-Date	Remaining Amount
WIF Bond Issue	\$ 21,500,000.00	.854% - 2.706%	\$ 470,337.08			\$ 21,029,662.92		\$ 20,004,497.64	\$ 1,025,165.28
Open Market Bond Issue	\$ 83,430,358.49	3% - 5.25%	\$ 2,049,764.39	\$ 7,858,241.52		\$ 73,522,352.58		\$ 18,164,096.58	\$ 55,358,256.00
TWDB Dfund Series 2011A	\$ 67,470,000.00	1.22% - 4.97%	\$ 751,195.33	\$ 5,166,233.00		\$ 61,552,571.67		\$ 199,354.00	\$ 61,552,571.67
TWDB Dfund Series 2012	\$ 175,000,000.00	1.17% - 4.62%	\$ 970,374.13	\$ 12,869,175.00		\$ 161,160,450.87		\$ -	\$ 161,160,450.87
<b>TWDB Dfund Series 2012A</b>	<b>\$ 230,530,000.00</b>		<b>\$ 1,097,000.00</b>	<b>\$ 20,125,000.00</b>	<b>\$ 24,730,000.00</b>		<b>\$ 184,578,000.00</b>		<b>\$ 184,578,000.00</b>
<b>Totals</b>	<b>\$ 577,930,358.49</b>		<b>\$ 5,338,670.93</b>	<b>\$ 46,018,649.52</b>	<b>\$ 24,730,000.00</b>	<b>\$ 317,265,038.04</b>	<b>\$ 184,578,000.00</b>	<b>\$ 38,367,948.22</b>	<b>\$ 463,674,443.82</b>

Notes:

1. These value do not include investment income.
2. Red items are estimates only.
3. Series 2011 bond costs include \$681,132.45 for bond insurance and \$459,709.50 for underwriter's discount.

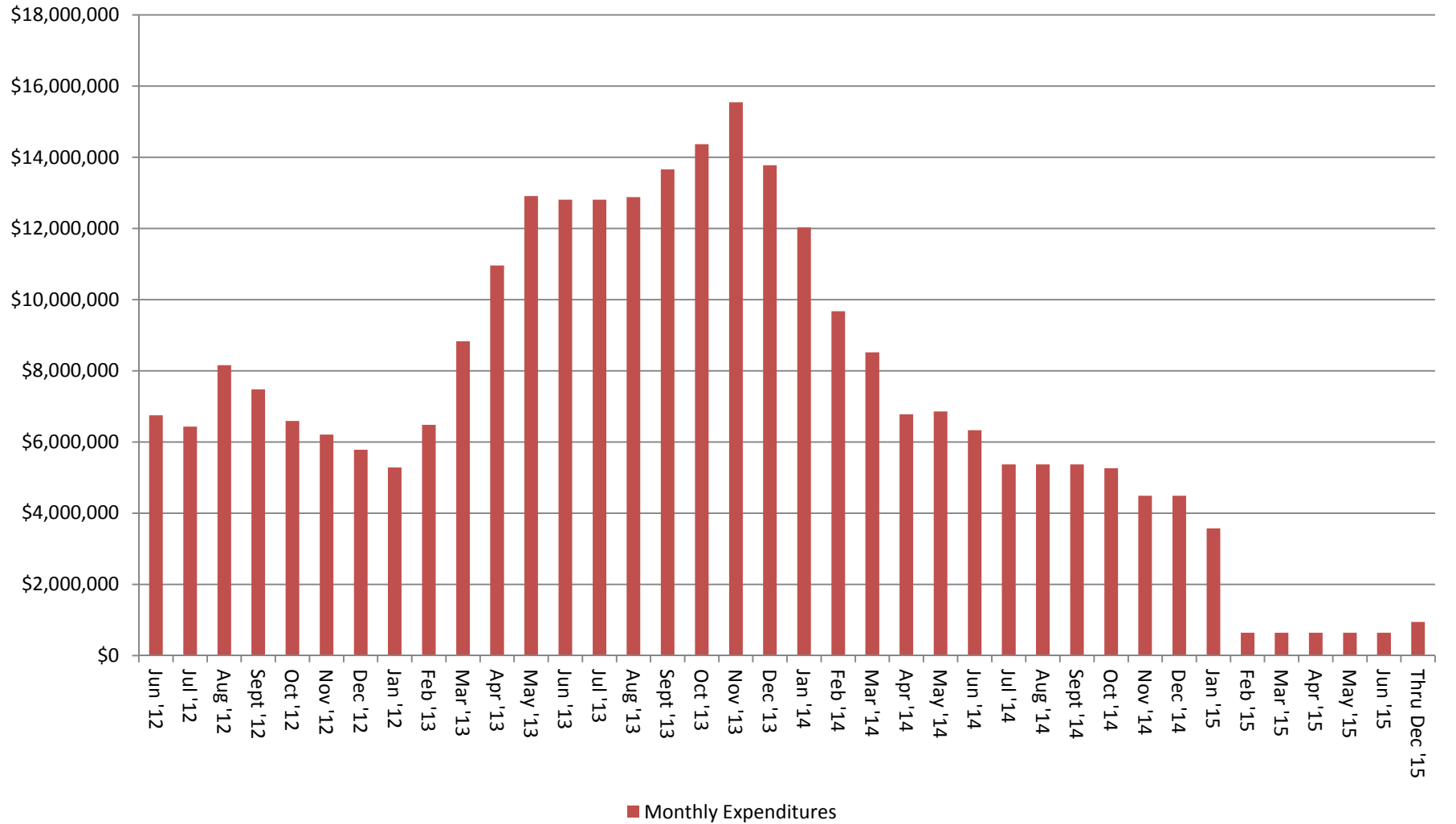


## Exhibit 6 Funding Source Summary July 16, 2012





## Exhibit 7 GRP Program Monthly Forecasted Expenditures for Contracted Services July 16, 2012







## Exhibit 8

### Estimate at Completion (EAC) for Current Authorizations

### June 30, 2012

#### Surface Water Transmission System

Project	Firm	Amount Authorized by Board	Board Authorized Modifications		Forecasted Modification Amount	Estimate at Completion (EAC)
			Dollars	%		
T1	Jones & Carter	\$ 1,898,348.00		0.0%		\$ 1,898,348.00
T2	Klotz	\$ 1,613,958.55		0.0%		\$ 1,613,958.55
T3	Espey	\$ 1,555,154.42		0.0%		\$ 1,555,154.42
W1	LAN	\$ 2,104,294.00		0.0%		\$ 2,104,294.00
W2	Binkley & Barfield	\$ 2,317,043.55		0.0%		\$ 2,317,043.55
W3	Cobb Fendley	\$ 3,252,441.50		0.0%		\$ 3,252,441.50
W4	LJA	\$ 876,011.82	\$ 17,574.56	2.0%		\$ 893,586.38
C1	Dannenbaum	\$ 822,823.00		0.0%		\$ 822,823.00
C2	Schaumburg & Polk	\$ 1,790,745.97	\$ 207,547.98	11.6%		\$ 1,998,293.95
C3	Kimley-Horn	\$ 1,234,193.45	\$ 32,307.28	2.6%		\$ 1,266,500.73
C4	R.G. Miller	\$ 516,971.97		0.0%		\$ 516,971.97
WRFs	Malcolm Pirnie/Arcadis	\$ 1,808,102.00		0.0%		\$ 1,808,102.00
CM&I	KBR	\$ 533,432.62		0.0%		\$ 533,432.62
<b>Subtotal - Surface Water Transmission System</b>		<b>\$ 20,323,520.85</b>	<b>\$ 257,429.82</b>	<b>1.3%</b>	<b>\$ -</b>	<b>\$ 20,580,950.67</b>

#### Surface Water Facilities

Project	Firm	Amount Authorized by Board	Board Authorized Modifications		Forecasted Modification Amount	Estimate at Completion (EAC)
			Dollars	%		
WTP	HDR	\$ 13,590,846.00	\$ 271,719.00	2.0%		\$ 13,862,565.00
HSPS	AECOM	\$ 3,364,151.98		0.0%		\$ 3,364,151.98
RWI&PS	Freese and Nichols	\$ 2,841,470.00		0.0%		\$ 2,841,470.00
CMAR	McCarthy	\$ 10,346,793.00		0.0%		\$ 10,346,793.00
CA&I	CDM	\$ 5,348,633.00		0.0%		\$ 5,348,633.00
<b>Subtotal - Surface Water Facilities</b>		<b>\$ 35,491,893.98</b>	<b>\$ 271,719.00</b>	<b>0.8%</b>	<b>\$ -</b>	<b>\$ 35,763,612.98</b>



## Exhibit 8

### Estimate at Completion (EAC) for Current Authorizations

#### June 30, 2012

#### Program Consultant Services & Other Projects

Project	Firm	Amount Authorized by Board	Board Authorized Modifications		Forecasted Modification Amount	Estimate at Completion (EAC)
			Dollars	%		
Prog Mgmt	Brown & Gay	\$ 7,244,751.00		0.0%		\$ 7,244,751.00
Prog Survey	Landtech	\$ 514,524.00		0.0%		\$ 514,524.00
Prog Geo	Raba Kistner	\$ 145,260.00		0.0%		\$ 145,260.00
Prog Tran	AECOM	\$ 224,100.00	\$ 150,000.00	66.9%		\$ 374,100.00
Access Rd	ACES	\$ 435,000.00		0.0%		\$ 435,000.00
Access Rd	S&V Survey	\$ 66,875.00		0.0%		\$ 66,875.00
Land Acq	KDM	\$ 359,995.00	\$ 41,705.00	11.6%		\$ 401,700.00
Land Acq	PAS	\$ 1,415,550.00		0.0%		\$ 1,415,550.00
Prog Env	Halff	\$ 1,022,192.00	\$ 43,131.52	4.2%		\$ 1,065,323.52
Prog Fiber	EMA	\$ 441,289.00		0.0%		\$ 441,289.00
Prog Corr	V&A	\$ 511,978.00		0.0%		\$ 511,978.00
Prog Svcs & Projs	Other Program Services & Projects	\$ 2,527,447.08		0.0%		\$ 2,527,447.08
<b>Subtotal - Program Consultant Services &amp; Other Projects</b>		<b>\$ 14,908,961.08</b>	<b>\$ 234,836.52</b>	<b>1.6%</b>	<b>\$ -</b>	<b>\$ 15,143,797.60</b>

#### Construction Contracts

Project	Firm	Amount Authorized by Board	Board Authorized Modifications		Forecasted Modification Amount	Estimate at Completion (EAC)
			Dollars	%		
GRP Bldg #1	Brookstone	\$ 2,009,900.00	\$ (10,172.00)	-0.5%		\$ 1,999,728.00
Bldg #1 CMT	Aviles	\$ 48,193.60		0.0%		\$ 48,193.60
Landscape Buffer	KeyScape	\$ 47,490.00		0.0%		\$ 47,490.00
Temp Access Road	Lindsey Construction	\$ 986,431.00	\$ (10,534.15)	-1.1%		\$ 975,896.85
Access Road CMT	Terracon Consultants	\$ 12,842.50		0.0%		\$ 12,842.50
Aqua Texas Sewer	Randy Roan	\$ 516,650.50	\$ 6,082.17	1.2%		\$ 522,732.67
Aqua Texas CMT	Aviles	\$ 31,057.20		0.0%		\$ 31,057.20
Bldg #1 Fiber Line	Preferred Technologies	\$ 257,339.65		0.0%		\$ 257,339.65
Other	Other Construction Contracts	\$ 5,475.00		0.0%		\$ 5,475.00
<b>Subtotal - Construction Contracts</b>		<b>\$ 3,915,379.45</b>	<b>\$ (14,623.98)</b>	<b>-0.4%</b>	<b>\$ -</b>	<b>\$ 3,900,755.47</b>

#### Totals

	Amount Authorized by Board	Board Authorized Modifications		Forecasted Modification Amount	Estimate at Completion (EAC)
		Dollars	%		
Subtotal - Surface Water Transmission System	\$ 20,323,520.85	\$ 257,429.82	1.3%	\$ -	\$ 20,580,950.67
Subtotal - Surface Water Facilities	\$ 35,491,893.98	\$ 271,719.00	0.8%	\$ -	\$ 35,763,612.98
Subtotal - Program Consultant Services & Other Projects	\$ 14,908,961.08	\$ 234,836.52	1.6%	\$ -	\$ 15,143,797.60
Subtotal - Construction Contracts	\$ 3,915,379.45	\$ (14,623.98)	-0.4%	\$ -	\$ 3,900,755.47
<b>Total</b>	<b>\$ 74,639,755.36</b>	<b>\$ 749,361.36</b>	<b>1.0%</b>	<b>\$ -</b>	<b>\$ 75,389,116.72</b>



## Exhibit 9 Land Acquisition Summary June 30, 2012

Project	Anticipated Number of Easements to Acquire	Easements Acquired This Month	Easements Acquired Total
Transmission System Segment T-1	47	0	6
Transmission System Segment T-2	1	0	0
Transmission System Segment T-3	8	0	0
Transmission System Segment C-1	12	0	0
Transmission System Segment C-2	45	0	0
Transmission System Segment C-3	26	0	0
Transmission System Segment C-4	5	0	0
Transmission System Segment W-1	41	0	0
Transmission System Segment W-2	1	0	0
Transmission System Segment W-3	171	0	0
Transmission System Segment W-4	15	0	0
Totals:	372	0	6



## Exhibit 10 GRP Program Monthly Meeting Log June 30, 2012

Meeting	Agenda	Location	Date	Participants
CM&I Update to SJRA		SJRA G&A Office	Friday June 1, 2012	KBR, GRP Program Team staff
Transmission Line Standard Technical Specification Review Day 1		SJRA G&A Office	Monday June 4, 2012	GRP Program Team staff
CM&I Kick-off Meeting		SJRA G&A Office	Tuesday June 5, 2012	KBR, GRP Program Team staff
AECOM CMAR Workshop 1	Noise abatement not included in initial construction, if needed add during future expansion, details of chemical trenches to be used for chemical lines routed through site, coordination of instrumentation design	SJRA G&A Office	Tuesday June 5, 2012	AECOM, McCarthy, GRP Program Team staff
FNI CMAR Workshop 1	Sound attenuation panels, security details, start-up considerations	SJRA G&A Office	Tuesday June 5, 2012	FNI, McCarthy, GRP Program Team staff



## Exhibit 10

### GRP Program Monthly Meeting Log

### June 30, 2012

Meeting	Agenda	Location	Date	Participants
HDR CMAR Workshop 1	Design of chemical trench, coordination with fire marshal, design of aeration in the GSTs for TTHM removal, backwash waste clarifier removal from solids process treatment, final equipment and conduit tagging, Pall membrane shop drawing changes	SJRA G&A Office	Wednesday June 6, 2012	HDR, McCarthy, GRP Program Team staff
Transmission Line Standard Technical Specification Review Day 2		SJRA G&A Office	Wednesday June 6, 2012	GRP Program Team staff
Transmission Line Standard Technical Specification Review Day 3		SJRA G&A Office	Thursday June 7, 2012	GRP Program Team staff
Segment W3 Quality Assurance Audit		Cobb Fendley Office	Friday June 8, 2012	Cobb Fendley, GRP Program Team staff
Segment C4 Quality Assurance Audit		RG Miller Office	Friday June 8, 2012	RG Miller, GRP Program Team staff
Segment W3 Post-Quality Assurance Audit Conference		SJRA G&A Office	Tuesday June 12, 2012	Cobb Fendley, GRP Program Team staff
Segment C2 Post-Quality Assurance Audit Conference		SJRA G&A Office	Tuesday June 12, 2012	Schaumburg & Polk, GRP Program Team staff
WRF Post-Quality Assurance Audit Conference		SJRA G&A Office	Wednesday June 13, 2012	Malcolm Pirnie, GRP Program Team staff



## Exhibit 10 GRP Program Monthly Meeting Log June 30, 2012

Meeting	Agenda	Location	Date	Participants
Segment W2 Post-Quality Assurance Audit Conference		SJRA G&A Office	Wednesday June 13, 2012	Binkley & Barfield, GRP Program Team staff
Segment W4 Post-Quality Assurance Audit Conference		SJRA G&A Office	Wednesday June 13, 2012	LJA, GRP Program Team staff
Segment T1 Quality Assurance Audit		Jones & Carter Office	Thursday June 14, 2012	Jones and Carter representatives, GRP Program Team staff
Segment T2 Post-Quality Assurance Audit Conference		Klotz Office	Thursday June 14, 2012	Klotz, GRP Program Team staff
Segment C3:Alignment in Conroe Park North Industrial Park		SJRA G&A Office	Monday June 18, 2012	GRP Program Team staff
Segment C1 Final Design Kickoff Meeting		SJRA G&A Office	Monday June 18, 2012	Dannenbaum, GRP Program Team staff
Segment C2:Alignment Issues		SJRA G&A Office	Tuesday June 19, 2012	GRP Program Team staff
Traffic Control Workshop		SJRA G&A Office	Tuesday June 19, 2012	KBR, LAN, BBI, Cobb Fendley, LJA, GRP Program Team staff
AECOM CMAR Workshop 2	GST CFD mixing model nearing completion, details of chemical trench drain system, specification manufacturers for motor vibration sensors and electrical motors	SJRA G&A Office	Tuesday June 19, 2012	AECOM, McCarthy, GRP Program Team staff





## Exhibit 10

### GRP Program Monthly Meeting Log

### June 30, 2012

Meeting	Agenda	Location	Date	Participants
FNI CMAR Workshop 2	Pump procurement procedures, specification manufacturers for motor vibration sensors and electrical motors	SJRA G&A Office	Tuesday June 19, 2012	FNI, McCarthy, GRP Program Team staff
HDR CMAR Workshop 2	Sanitary and process sewer requirements, instrumentation, instrumentation I/O and equipment lists, inclusion of geotechnical report in contract documents, coatings on interior building walls, chemical trench design	SJRA G&A Office	Wednesday June 20, 2012	HDR, McCarthy, GRP Program Team staff
Panorama Village Meeting		Panorama City Hall	Wednesday June 20, 2012	Panorama representatives, GRP Program Team staff
Construction Communication Team Meeting		SJRA G&A Office	Wednesday June 20, 2012	KBR, External Stakeholders, GRP Program Team staff
Flows and Pressures Coordination Meeting		BGE Office	Thursday June 21, 2012	Malcolm Pirnie, GRP Program Team staff



## Exhibit 10 GRP Program Monthly Meeting Log June 30, 2012

Meeting	Agenda	Location	Date	Participants
GRP Program Review Committee Meeting		SJRA G&A Office	Monday June 25, 2012	Review Committee, GRP Program Team staff, general public
Trenchless Options Meeting		SJRA G&A Office	Tuesday June 26, 2012	KBR, GRP Program Team staff
Segment W1 Post-Quality Assurance Audit Conference		SJRA G&A Office	Tuesday June 26, 2012	LAN, GRP Program Team staff
Segment C4 Post-Quality Assurance Audit Conference		SJRA G&A Office	Tuesday June 26, 2012	RG Miller, GRP Program Team staff
Segment C3: Entergy easements and power poles in Conroe Park North Industrial Park		Entergy Woodlands Office	Wednesday June 27, 2012	Entergy representative, GRP Program Team staff
Utility Relocation Coordination Meeting		SJRA G&A Office	Wednesday June 27, 2012	Mid-South Synergy, SuddenLink, Consolidated, Jones and Carter, Klotz, GRP Program Team staff
Monthly Southern Montgomery County GRP Program Technical Status Meeting		SJRA Woodlands Office	Thursday June 28, 2012	Joint GRP Participant representatives, GRP Program Team staff
SJRA Board of Directors Meeting		SJRA G&A Office	Thursday June 28, 2012	SJRA Board of Directors, GRP Program Team staff, general public
Segment C2: Alignment near Canyon Creek subdivision		Mr. John Cox's home	Thursday June 28, 2012	Mr. John Cox (Canyon Creek developer), GRP Program Team staff



## Exhibit 11

### GRP Amendments and Change Orders

#### June 30, 2012

Project	Proposal Number	Modification Number	Description	Modification		Approval Date
				Amount	Days	
GRP Building No. 1	N/A	Brookstone Change Order No. 5	Furnish and install 540 LF of 48" tall vinyl coated (brown) chain-link fencing around the perimeter of the retaining wall.	\$ 9,525	0	6/19/2012
GRP Temporary Access Road	N/A	Lindsey Change Order No. 3	Credit for substitution of proposed cement-stabilized crushed concrete base with standard crushed concrete base material. Installation of a Guard Station at Longmire Road to control access.	\$ (27,754)	0	6/22/2012
GRP Aqua Texas Sanitary Sewer/Road Relocation	N/A	Randy Roan Change Order No. 1	Re-alignment of Aqua Texas access easement at White Oak Point Drive. Remove Extra Bid Items 28, 29, 30 due to wet conditions not being encountered during installation of sanitary sewer system.	\$ 6,082	0	6/27/2012



## Exhibit 12 Construction Photos June 2012



June 4, 2012 – SWF Access Road Construction



June 13, 2012 – SWF Access Road Construction



June 11, 2012 – SWF Access Road Construction



June 29, 2012 – SWF Access Road





## Exhibit 12 Construction Photos June 2012



June 1, 2012 – AquaTexas Sanitary Sewer/Road Relocation



June 14, 2012 – Aligning New Lift Station Wet Well



June 5, 2012 – AquaTexas sanitary sewer/road relocation



June 29, 2012 – AquaTexas Road





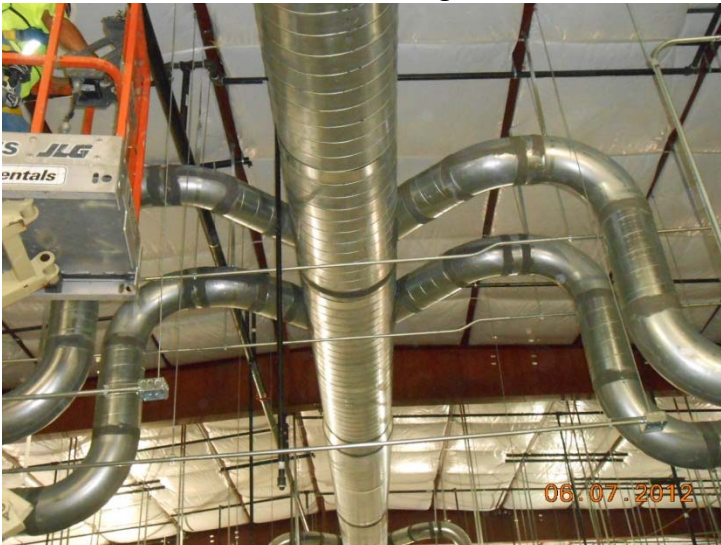
## Exhibit 12 Construction Photos June 2012



June 5, 2012 – GRP Building No. 1 Exterior



June 11, 2012 – GRP Building No. 1 Interior



June 7, 2012 – GRP Building No. 1 AC Duct Configuration



June 13, 2012 – GRP Building No. 1 Electrical Conduit





## Exhibit 12 Construction Photos June 2012



June 20, 2012 – GRP Building No. 1 Ceiling Grid



June 25, 2012 – GRP Building No. 1 Sidewalk Pour



June 25, 2012 – GRP Building No. 1 Interior Walls Framed



June 29, 2012 - GRP Building No. 1





## Exhibit 12 Construction Photos June 2012



Surface Water Facility Site



Surface Water Facility Site





## Exhibit 12 Construction Photos June 2012



Surface Water Facility Site



Surface Water Facility Site

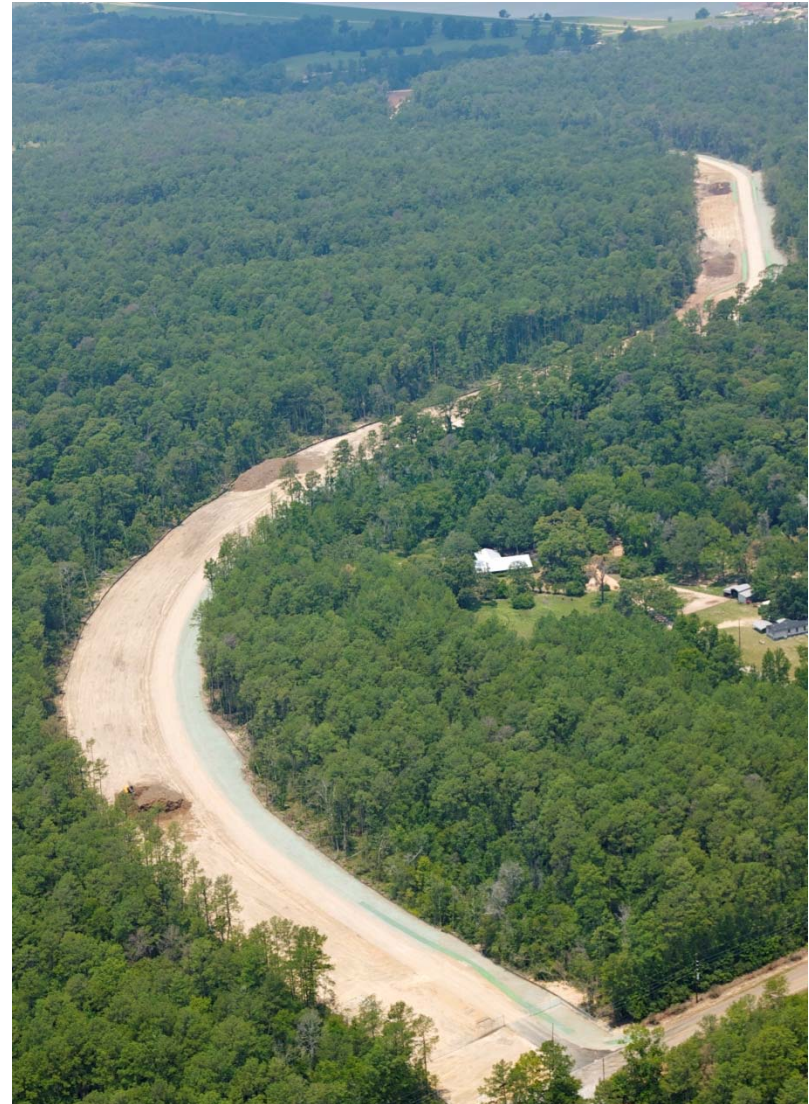




## Exhibit 12 Construction Photos June 2012



Surface Water Facility Site



Surface Water Facility Access Road At Longmire