



GROUNDWATER REDUCTION PLAN PROGRAM

MONTHLY PROGRESS REPORT - JULY 2013



TABLE OF CONTENTS

Table of Contents	i	4.2 Financial Reports	4-1
Acronyms and Definitions	ii	4.3 Invoices/Applications for Payment	4-1
1.0 Planning	1-1	4.4 Contract Amendments and Change Orders	4-1
1.1 Strategic	1-1	4.5 Claims	4-2
1.2 Engineering and Construction	1-1	4.6 CIP Cash Flow	4-2
1.3 Meetings	1-1	4.7 CIP Budget Estimates at Completion	4-2
2.0 Schedule	2-1	4.7.1 GRP Program	4-2
2.1 Engineering	2-1	4.7.2 GRP Projects	4-2
2.2 State Agency Coordination	2-1	4.8 Land Acquisition	4-2
2.3 Construction	2-2	5.0 Quality Assurance	5-1
3.0 Procurement	3-1	5.1 Final Design	5-1
3.1 Solicitations	3-1	5.2 Pre-Construction	5-1
3.2 Contract Awards	3-1	5.3 Construction	5-1
3.3 Process and Procedures	3-1	6.0 Exhibits	6-1
3.4 Look Ahead	3-1		
4.0 Cost Report and Financial Considerations	4-1		
4.1 GRP Program and GRP Project CIP Budget(s)	4-1		



ACRONYMS AND DEFINITIONS

ACRONYMS

CA&I	Construction Administration and Inspection
CCT	Construction Communication Team
CIP	Capital Improvement Project
CM&I	Construction Management and Inspection
CMAR	Construction Manager at Risk
CMT	Construction Material Testing
CSB / P	Competitive Sealed Bid / Proposal
EA	Environmental Assessment
EAC	Estimate At Completion
GIS	Geographic Information System
GRP	Groundwater Reduction Plan
GST	Ground Storage Tank
HSPS	High Service Pump Station
LSGCD	Lone Star Groundwater Conservation District
LVGU	Large Volume Groundwater User
PER	Preliminary Engineering Report
PMP	Program Management Plan
PSA	Professional Services Agreement
QA	Quality Assurance
RFB / Q / P	Request For Bids / Qualifications / Proposals
RWI / RWPS	Raw Water Intake / Raw Water Pump Station
SJRA	San Jacinto River Authority
SOQ	Statement Of Qualifications
SWF	Surface Water Facilities (SWTP, HSPS and RWI)
SWRF	Surface Water Receiving Facilities
SWTP	Surface Water Treatment Plant
TBD	To Be Determined
TCEQ	Texas Commission on Environmental Quality
TWDB	Texas Water Development Board
TxDOT	Texas Department Of Transportation
WIF	Water Infrastructure Fund

DEFINITIONS

GROUNDWATER REDUCTION PLAN (GRP)	The document developed and filed with the LSGCD indicating SJRA's plan to reduce the permitted 2009 groundwater pumpage of its GRP Participants by 30%. The GRP is administered by the SJRA, including any supplements, revisions, or amendments.
GRP PROGRAM TEAM	SJRA staff, Program Management Consultant (Brown & Gay Engineers, Inc.) staff, and technical consultants working interdependently toward meeting the goals of the Groundwater Reduction Plan.
GRP ADMINISTRATOR	The SJRA General Manager's designee who administers the SJRA Groundwater Reduction Plan and GRP Contract with GRP Participants.
GRP CONTRACT	Contract between the SJRA and a Participant to be included in the SJRA's efforts to meet the surface water conversion requirements mandated by the LSGCD.
JOINT GRP	GRP which is prepared to include (takes into account) LVGUs who have executed a GRP Contract with the SJRA to join the SJRA's GRP. Contracted LVGUs obtain LSGCD groundwater reduction regulation compliance through the SJRA's Joint GRP without preparing and submitting a GRP.
LARGE VOLUME GROUNDWATER USER(S) (LVGU)	Any person or entity that, through a single well or a combination of wells, actually produces or is authorized by permit(s) issued by the LSGCD to produce 10 million gallons or more of groundwater annually on or after January 1, 2008.
PARTICIPANT(S)	Regulated User(s) that enters into and remains subject to a written agreement with the SJRA to be included in the SJRA's GRP and includes the legal successors or assigns of Participant(s).
REGULATED USER(S)	Any public or private entity or person that is or becomes subject to the District Regulatory Plan established by the LSGCD and includes any amendments, revisions or supplements thereto as may be adopted by the LSGCD.
SJRA GRP DIVISION	Division of the SJRA responsible for GRP compliance, and the management, administration, operation and maintenance of the surface water facilities and surface water transmission system.



1.0 PLANNING

The GRP Program Team meets regularly for the purposes of setting performance expectations and goals of the GRP Program, identifying the efforts required to achieve these objectives, evaluating the effectiveness of such efforts, and modifying those efforts based upon both internal and external performance evaluations.

1.1 STRATEGIC

As construction progresses, every effort is being made to keep the public informed of ongoing construction activities. Project signs were strategically placed at each construction site to easily identify the GRP construction projects. The GRP Call Center is set up to receive phone calls during business hours, as well as after hours, to accommodate inquiries regarding various issues and emergency phone calls related to construction. The GRP website, www.sjra/grp.net, contains construction alerts and traffic alerts for each transmission line segment in which construction is underway. The alerts are periodically updated to provide the public with up-to-date information to assist in their daily commutes. The SJRA QR code below can be used to easily access the traffic alert map on your smart phone in the surrounding areas.

The SWF (Surface Water Facility) is fully in the construction phase. The key effort now is to bring this project to completion, document construction, and focus on start-up details to ensure quality and proper functionality.

With regard to surface water transmission, the remaining twelve segments continue in the final design stage. Once completed, the Program will move through the procurement phase and into construction which will then be awarded throughout the remainder of the year.



QR Code for Traffic Alerts

1.2 ENGINEERING AND CONSTRUCTION

Our engineering consultants continue to provide procurement services by preparing proposal packages and assisting in the evaluation of construction proposals. As construction contracts are awarded on the remaining transmission line segments, the engineering consultants will provide construction phase services by reviewing submittals and pay applications as work proceeds.

1.3 MEETINGS

The GRP Program Team continued meeting with GRP Program stakeholders this month. A listing of these meetings is attached as ***Exhibit 9***.



SJRA Project Sign - Located at Construction Sites



2.0 SCHEDULE

Currently, the GRP Program remains on schedule for the delivery of treated surface water to select Joint GRP Participants on or before January 1, 2016. A simplified GRP Program schedule can be found in attached **Exhibit 1**.

2.1 ENGINEERING

SURFACE WATER TRANSMISSION SYSTEM

Segment T1 – Design is complete with construction underway. Engineering consultant is providing construction phase services.

Segment T2 – Design is complete with construction underway. Engineering consultant is providing construction phase services.

Segment T3 – Design is complete with construction underway. Engineering consultant is providing construction phase services.

Segment W1 – Design is complete with construction underway for Segments W1A and W1B. Engineering consultant is providing construction phase services for both Segments.

Segment W2 – Design is complete with construction underway for Segments W2A and W2B. Engineering consultant is providing construction phase services for W2A. Notice to proceed will be issued in August for construction of Segment W2B.

Segment W3 – Design submittal for Segments W3A and W3B is 100% complete.

Segment W4 – Design is complete. Engineering consultant is providing procurement support services.

Segment C1 – Design is complete for Segments C1A and C1B. Engineering consultant is providing procurement support services.

Segment C2 – Design is complete. Engineering consultant is providing procurement support services.

Segment C3 – Design is complete. Engineering consultant is providing procurement support services.

Segment C4 – Design is complete. Engineering consultant is providing procurement support services.

Surface Water Receiving Facilities – Design is complete. Engineering consultant is providing procurement support services.

Standpipe - Samples were collected and 60% design submittal was completed this month.

SURFACE WATER FACILITIES

Raw Water Intake Pump Station – Design is complete and construction continues.

Surface Water Treatment Plant – Design is complete and construction continues.

High Service Pump Station and Ground Storage Tanks – Design is complete and construction continues.

Fiber Optic Communications System – Consultant is working on 100% design submittal.

Construction Management and Inspection (CM&I) – The CM&I team is providing management and inspection for Transmission Segments T1, T2, T3, W1A, W1B, W2A and W2B.

Construction Administration and Inspection (CA&I) – The CA&I staff for the SWF is currently working with the CMAR and SJRA staff to review submittals for the RFI's and provide constant field monitoring and inspection of the systems being installed.

Cathodic Protection – The cathodic protection consultant has completed their design effort for the transmission line segments. They have also continued efforts for the construction phase of cathodic protection for the Surface Water Facilities.

2.2 STATE AGENCY COORDINATION

Segment C4 – TWDB completed review of plans and specifications, and issued a Plan Approval letter.

Surface Water Receiving Facilities – TWDB completed review of plans and specifications, and issued a Plan Approval letter for the North Receiving Facilities Project.

Segment W4 – TWDB is in process of reviewing plans and specifications.

Request For Release of Funds From Escrow - TWDB approved the seventh request for release of escrowed funds. An eighth release request was forwarded for consideration in July to cover construction of Segment W2B, as well as additional engineering services.

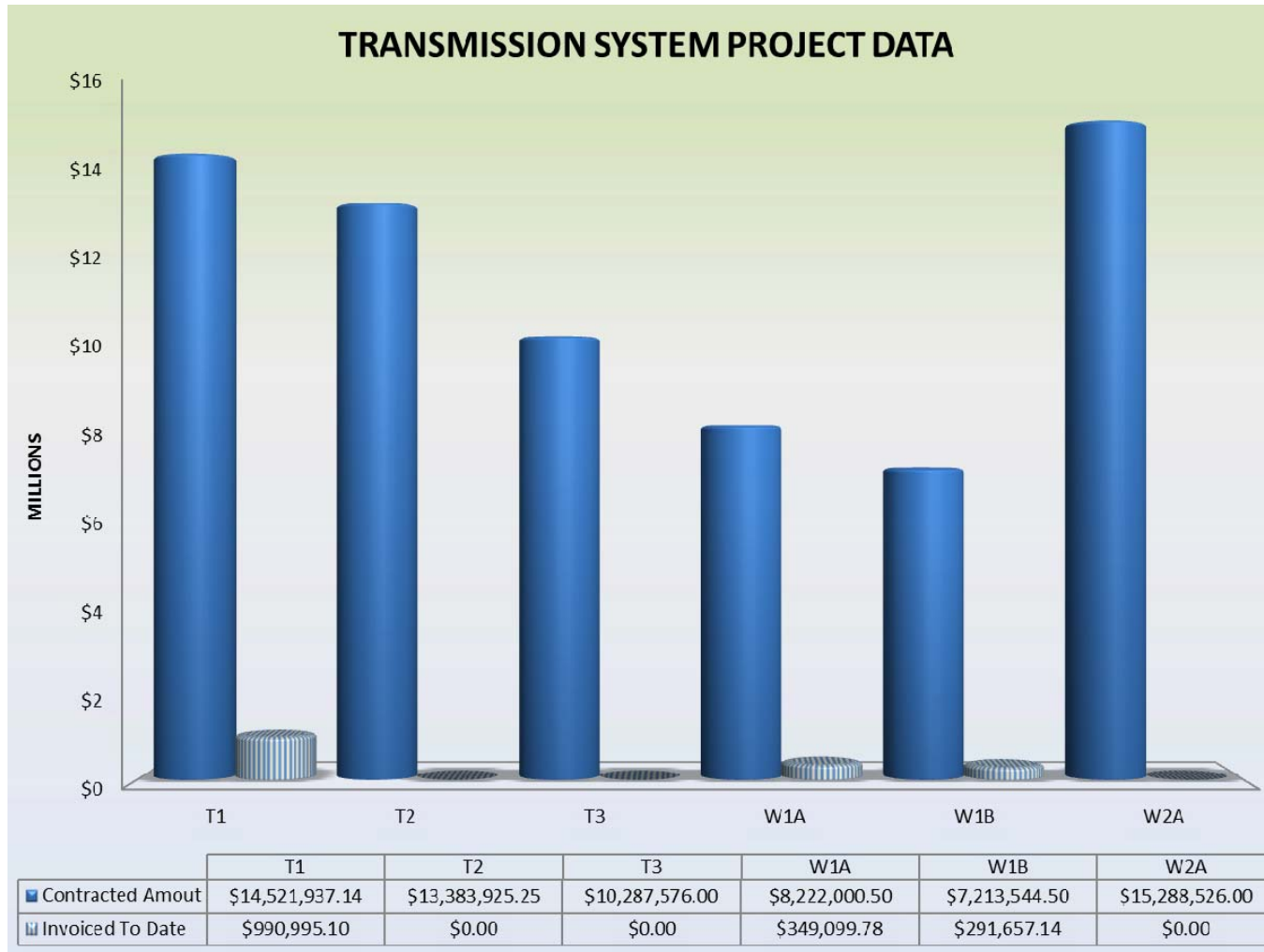


2.0 SCHEDULE (CONTINUED)

2.3 CONSTRUCTION

SURFACE WATER TRANSMISSION SYSTEM

To date, six of eighteen construction contracts have been awarded. Construction contracts for the remaining waterline segments will continue to be awarded over the next six months and construction will begin during the remainder of 2013. The chart below shows the progress of Transmission Line Segments T1, T2, T3, W1A, W1B and W2A thus far.



2.0 SCHEDULE (CONTINUED)

Segment T1 - The contractor installed 3,324 feet of 60-inch pipe by open cut and tunneling operations from the Surface Water Plant boundary westerly toward the SJRA General and Administration (G&A) Building. The completed tunneling segments were under the outlet channel and beside the G&A Building.

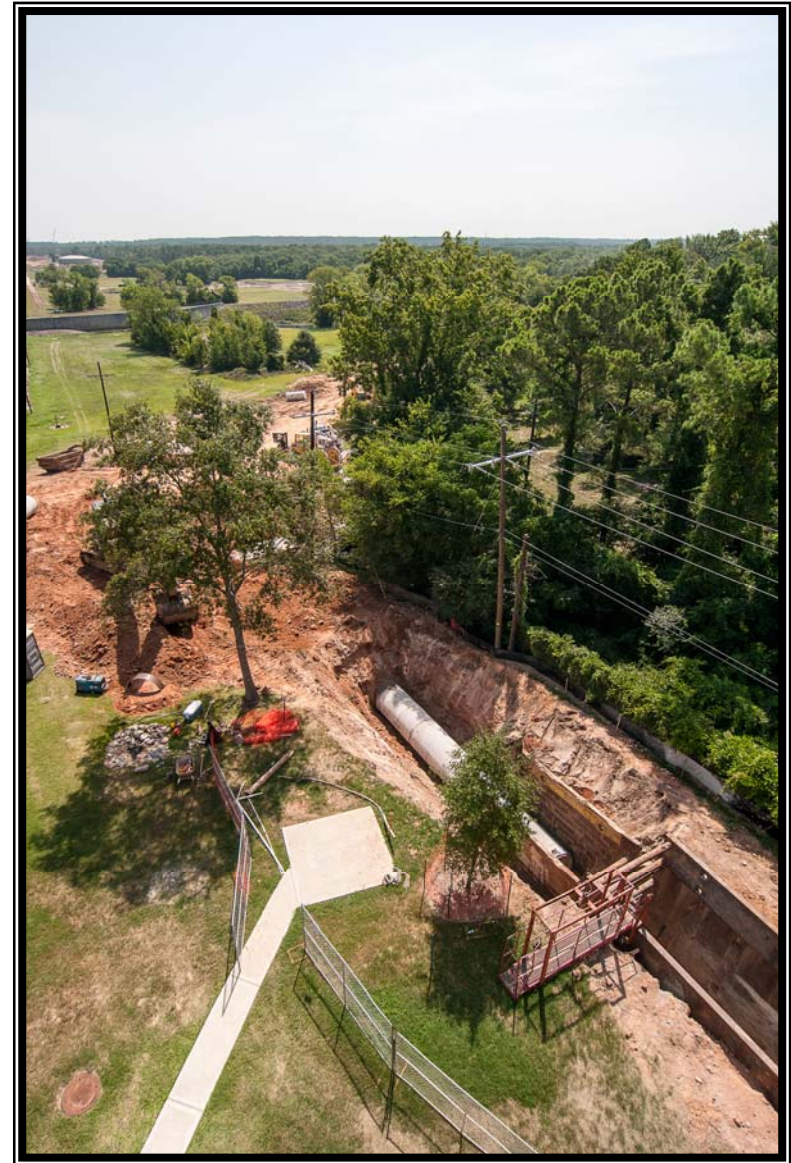
Segment T2 - The contractor has mobilized on site for construction and tunneling operations were started during the month with shaft construction.

Segment T3 - Critical utility location commenced along this line segment, as well as the construction surveying and clearing.

Segment W1A - The contractor's installation of 16-inch fusible PVC continues. In July, 3,715 feet of pipe was installed by horizontal directional drilling. The contractor's work plan along FM 2978 was submitted to The Woodlands Development Company (TWDC) for review in accordance with the easement agreements. TWDC comments were incorporated and the contractor has been authorized to proceed with this work with specific instructions to minimize the clearing of trees at each insertion pit and the underbrush between the pits.

Segment W1B - The contractor's installation of 3,300 feet of 20-inch and 16-inch pipe began in the Panther Creek Tributary easement between Kuykendahl and Alden Bridge. This work is being constructed by open cut. Clearing was performed in the easement along Kuykendahl and Research Forest Drive and Panther Creek.

Segment W2A - The contractor began construction surveying and critical utility locates this month.



Segment T1—Pipe Installation View From Atop the G&A Building

2.0 SCHEDULE (CONTINUED)

SURFACE WATER RECEIVING FACILITIES

The City of Oak Ridge North water plant modifications construction continued in July. This project includes surface water receiving facilities for the City of Oak Ridge North.

SURFACE WATER FACILITIES

Raw Water Intake - The RWI foundation is complete, including all below foundation electrical, mechanical, and plumbing scope of work. Structural Steel (Building Frame) will be onsite in mid-August with erection beginning shortly afterwards.

Surface Water Treatment Plant - Progress at the Water Treatment Plant has expanded to the Operations, Warehouse, Chemical, Electrical, and Generator Buildings. The majority of the work is still concentrated at three main process structures: Pretreatment, Membrane Building and Granulated Activated Carbon (GAC) Building. Structural earthwork and concrete work are heavily underway with electrical and mechanical systems following.

High Service Pump Station - The HSPS foundation is complete and exterior masonry is currently underway.

Ground Storage Tanks - Both Ground Storage Tank Nos. 1 and 2 have been erected with the wire-winding process complete. Interior cove foundations and exterior wall finishing are underway. Both tanks are scheduled to be tested in the month of September.



Surface Water Facilities - Construction at Warehouse

3.0 PROCUREMENT

3.1 SOLICITATIONS

This month, solicitations for proposals for construction were made for the following:

- San Jacinto River Authority RFP 13-019—North Water Receiving Facilities
- San Jacinto River Authority RFP 13-026—Segment C4 Proposed 24-inch Water Transmission Line
- San Jacinto River Authority RFP 13-073—Computerized Maintenance Management System Software and Implementation Services
- San Jacinto River Authority RFP 13-024—Segment C2 Proposed 12-inch—42-inch Water Transmission Line
- San Jacinto River Authority RFP 13-036—Segment W4, Proposed 24-inch and 20-inch Water Transmission Line

3.2 CONTRACT AWARDS

The following contracts were awarded for construction this month:

- Professional services agreement and Work Order No. 1 for design, procurement and construction phase services of Alkalinity Facilities at Woodlands Wastewater Treatment Plant Nos. 1, 2, and 3
- Construction contract for Surface Water Transmission Line Segment W2B
- Work Order No. 7 for construction phase services by design consultant during construction of Surface Water Transmission Line Segment W2B System
- Work Order No. 6 for final design services of Surface Water Transmission Line Segments W3A and W3B
- Work Order No. 6 for design of the permanent access road from Longmire Road to the Surface Water Treatment Plant

3.3 PROCESS AND PROCEDURES

The GRP Program continues to utilize traditional procurement methods for consultant services and alternative project delivery methods in the procurement of contractor services.

3.4 LOOK AHEAD

The following list provides a very general look ahead at known and anticipated GRP Program professional services and construction contractor solicitations, contract awards, contract/work order amendments, and assorted agreements such as utility relocations and easement encroachments. Solicitations may be combined, modified, or canceled, or time frames may be modified as deemed necessary.

- Construction Contract for Surface Water Transmission South Water Receiving Facilities
- Work Order No. 2 for monitoring piezometers during construction of GRP facilities and Water Transmission Line near Lake Conroe Dam
- Construction Contract for Surface Water Transmission Line Segment C2
- Work Order No. 7 for Construction Phase Services during the Construction of Surface Water Transmission Line Segment C2
- Construction Contract for Surface Water Transmission Line Segment C3
- Work Order No. 6 Construction Phase Services during the Construction of Surface Water Transmission Line Segment C3
- Construction Contract for Surface Water Transmission Line Segment C4
- Work Order No. 6 Construction Phase Services during the Construction of Surface Water Transmission Line Segment C4
- Construction Contract for Surface Water Transmission Line Segment W4
- Construction Contract for North Surface Water Receiving Facilities
- Work Order No. 6 Construction Phase Services during the Construction of the North Receiving Facilities of the Surface Water Transmission System



4.0 COST REPORT AND FINANCIAL CONSIDERATIONS

4.1 GRP PROGRAM AND GRP PROJECT CIP BUDGET(S)

Through this month, the GRP Program remains under its construction cost estimate of \$500,000,000, and forecasts continue to indicate it will be completed under budget (see also subsection 4.6 and [Exhibit 2](#)). A summary of the GRP Program's CIP budget and cost considerations as reported to the GRP Review Committee and the SJRA Board of Directors is provided as attached [Exhibit 2](#).

A summary of the SJRA GRP Division's Fiscal Year 2013 (FY13) operating budget (revenue and expenditures) is provided as [Exhibit 8](#). The budget includes all normal and customary expenses for operating a utility-based, non-profit business, including debt service, and is developed annually for approval by the SJRA Board of Directors.

The SJRA Board of Directors has authorized bond funding for the GRP Program in the amount of \$512,400,358.49 (Net \$446,812,553.05; see also [Exhibit 4](#)). This funding allows the SJRA to secure all of the resources required to perform professional services, construction services, and procure long lead time equipment during the design phase of the GRP Program.

4.2 FINANCIAL REPORTS

[Exhibit 5](#) illustrates the funding sources presently applied towards the GRP Program CIP budget which include the following:

- 1.) Texas Water Development Board's (TWDB) Water Infrastructure Fund (WIF);
- 2.) The sale of open market Special Project Revenue Bonds, Series 2011;
- 3.) TWDB Dfund, Series 2011A;
- 4.) TWDB Dfund, Series 2012; and
- 5.) TWDB Dfund, Series 2012A

Approved funding to-date represents approximately 89.4% of the planned \$500,000,000.00 Program budget. Contracted commitments are summarized

in Table 4.1. The GRP Program's funding and forecasted expenditures are further detailed in attached [Exhibits 2, 3 and 4](#).

Please note that financial reports do not include investment income.

4.3 INVOICES/APPLICATIONS FOR PAYMENT

GRP Program Consultant Invoices and/or Construction Contractor Applications for Payment paid through the end of the report month are represented in Table 4.1 (Item F).

	Previous (Thru 6/30/13)	July 2013 Activity	To Date (Thru 7/31/13)
A. Approved Funding	512,400,358.49	0.00	512,400,358.49
B. Available Funding After Costs	446,812,553.05	0.00	446,812,553.05
C. Approved Contracts	362,150,884.71	18,336,089.09	380,486,973.80
D. Project Close Out	(812,453.92)	(27,221.89)	(839,675.81)
E. Uncontracted Funding	85,474,122.26	(18,308,867.20)	67,165,255.06
F. Invoices Paid	100,086,590.98	5,583,894.88	105,670,485.86
G. Remaining Funds	346,725,962.07	(5,583,894.88)	341,142,067.19

4.4 CONTRACT AMENDMENTS AND CHANGE ORDERS

Each of the GRP Program agreements, work orders, and amendments listed in Section 3.2 were presented at the GRP Review Committee and the SJRA Board of Directors meeting this month. Each item was authorized by the SJRA Board of Directors for execution by the SJRA General Manager.

4.0 COST REPORT AND FINANCIAL CONSIDERATIONS (CONTINUED)

4.5 CLAIMS

No claims were identified this month.

4.6 CIP CASH FLOW

The GRP Program CIP cash flow through calendar year 2015 reflects known expenditures through this month as seen in Table 4.1. Estimates for future expenditures are included in [Exhibit 2](#). All active and currently identified future GRP Program projects and initiatives are included in the cash flow. A graph of forecasted monthly expenditures from the referenced cash flow is attached as [Exhibit 3](#).

4.7 CIP BUDGET ESTIMATES AT COMPLETION

4.7.1 GRP Program

The **total gross funds** (including capitalized interest) required to execute Phase I of the GRP Program are currently estimated at \$564,335,358.49. Additionally, all current GRP Program contracts, including their respective SJRA Board of Director's approved budgeted amounts are listed in [Exhibit 6](#).

4.7.2 GRP Projects

The GRP Program projects remained within their approved contract budgets this month. [Exhibit 6](#) indicates each active GRP Program project and GRP Program contract.

4.8 LAND ACQUISITION

The GRP Program Team, with the support of its assorted land acquisition consultants, continued to make steady progress in acquiring the land and easements necessary for the surface water transmission system. The preparation of metes & bounds descriptions for easements along the transmission line routes continued and are nearing completion. Eight (8) easements were acquired in the month of July; four related to Segment T-1, two related to Segment C-2, and two related to Segment W3. Negotiations to acquire other easements throughout the system are at varying stages of completion. A cumulative summary of easement acquisition activity is provided in [Exhibit 7](#).



Above: Auger Bits Used For Tunnel Excavation

Below: PVC Pipe Used at Research and Kuykendahl (Segment W2B)



5.0 QUALITY ASSURANCE

5.1 FINAL DESIGN

As final design nears completion and milestone submittals are received, the GRP Program Team will review and provide comments as applicable to each submittal. The review will be based on submittal compliance with the GRP Program's Design Standards and Criteria Manual, completeness per Program Management Plan (PMP) Section 14.0 – Quality Management and Section 21.0 – Design Management, and general project understanding.

5.2 PRE-CONSTRUCTION

The CM&I Team conducted pre-proposal conferences for Transmission Line Segments C3 and C4, and the North Receiving Facilities. They assisted in the development of addenda, answered questions and participated in negotiations with the contractors.

5.3 CONSTRUCTION

Quality assurance efforts by the SJRA Construction Inspectors as well as the SWF CA&I consultant, continued this month with the continuation of SWF construction, primarily for the RWPS, HSPS and GSTs. There continue to be areas of construction underway for chemical containment and storage and dewatering facilities. Efforts included regular visits to the project site to monitor and document observed progress and confirm compliance with the construction contract. Similar quality assurance efforts by the SJRA Construction Inspectors and CM&I consultant for the SWRF and surface water transmission system continued this month.



Segment T2 - Construction Along Fish Creek

6.0 EXHIBITS

Exhibit 1 - GRP Program Schedule

Exhibit 2 - GRP Program Estimate-At-Completion

Exhibit 3 - GRP Program Monthly Forecasted Expenditures

Exhibit 4 - GRP Program Fund Data

Exhibit 5 - Monthly GRP Program Financing Report

Exhibit 6 - GRP Program Current Authorizations

Exhibit 7 - Land Acquisition Summary

Exhibit 8 - GRP Schedule of Revenues & Expenses—Actual & Budget

Exhibit 9 - GRP Program Monthly Meeting Log

Exhibit 10 - Surface Water Facilities (SWF) Construction Photos

Exhibit 11 - Transmission Line Construction Photos



Auger Bits Used for Drilling



Segment T2 - Construction Along Fish Creek at Mulligan Drive

Exhibit 1 - GRP Program Schedule

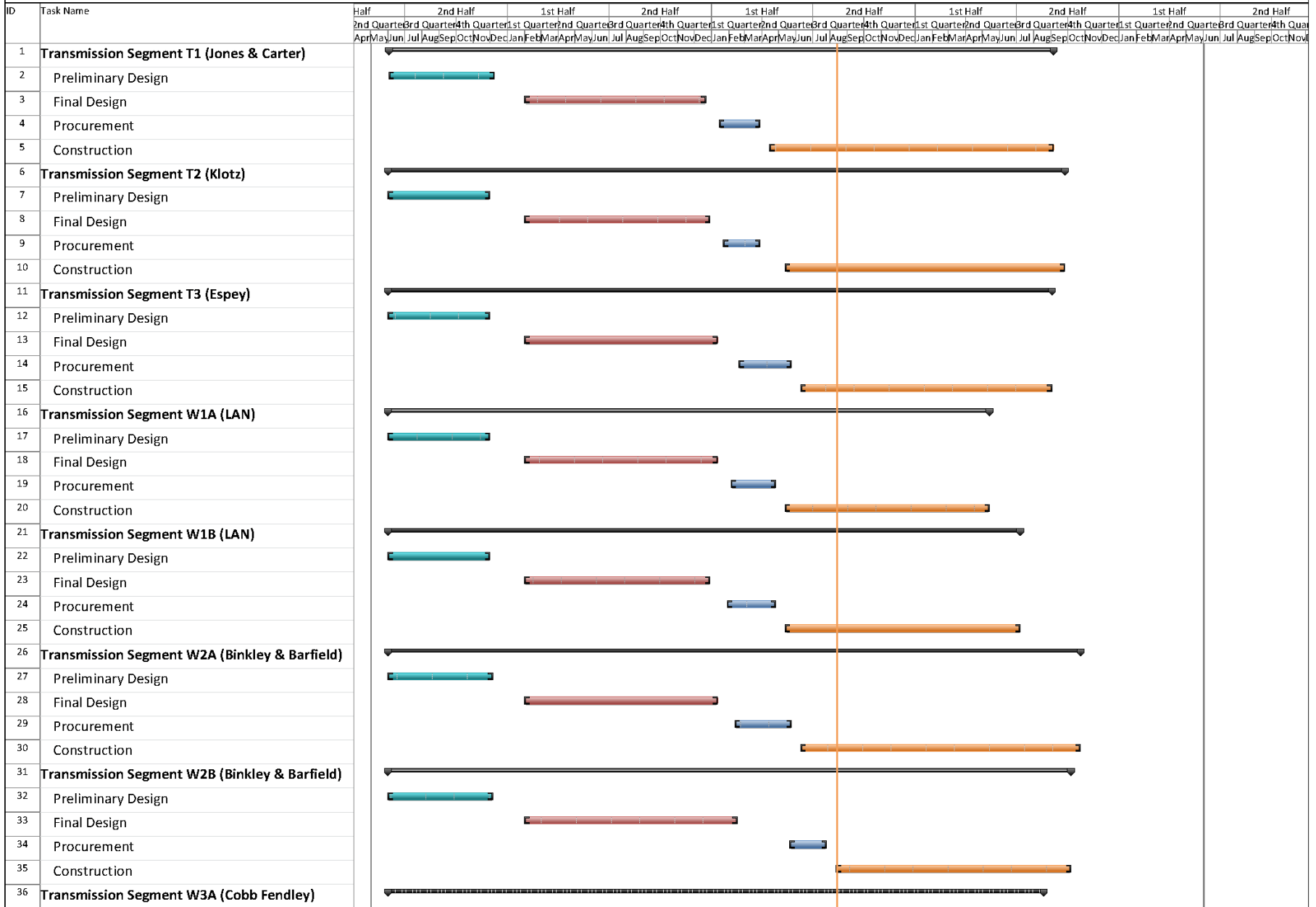


Exhibit 1 - GRP Program Schedule

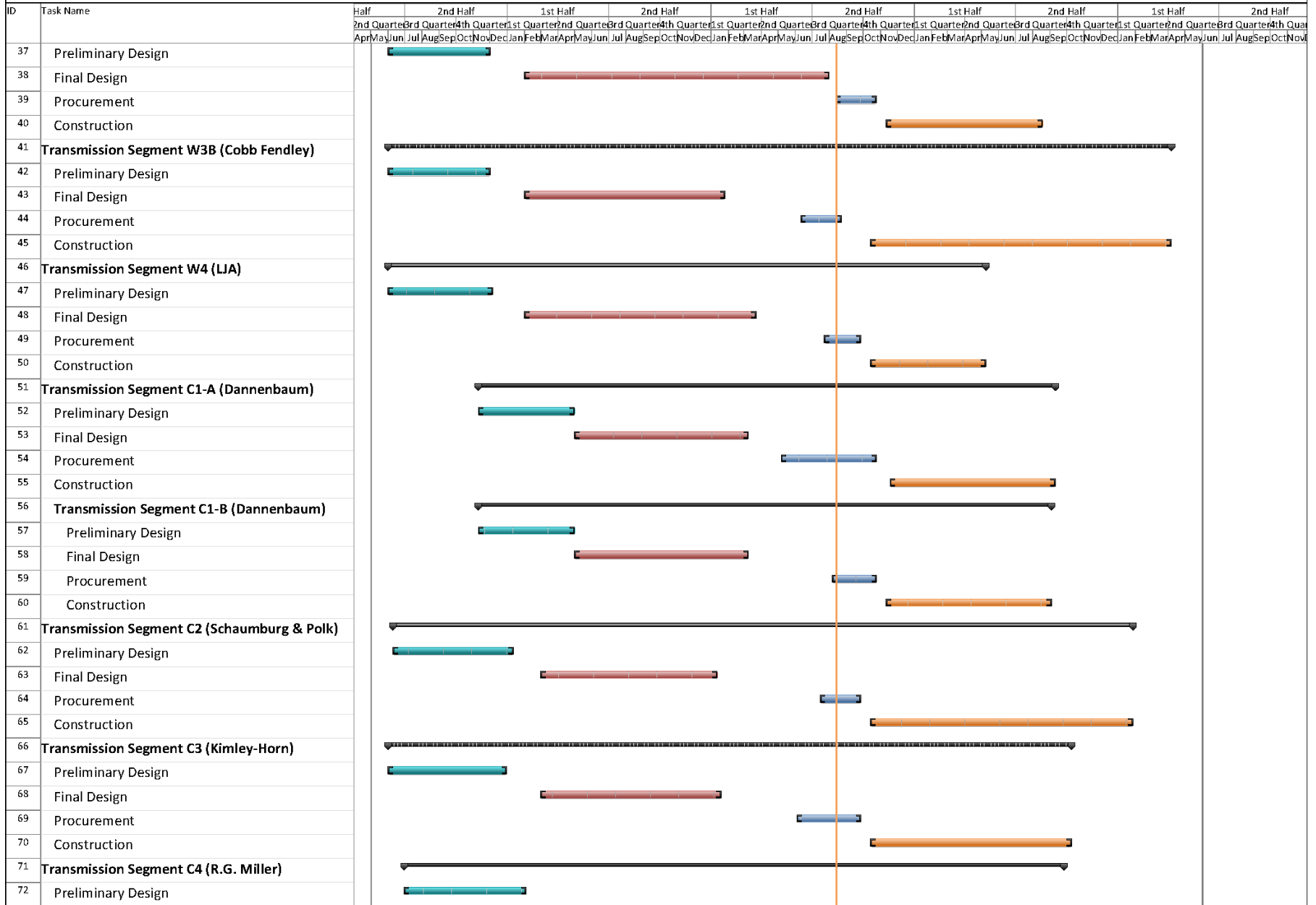


Exhibit 1 - GRP Program Schedule

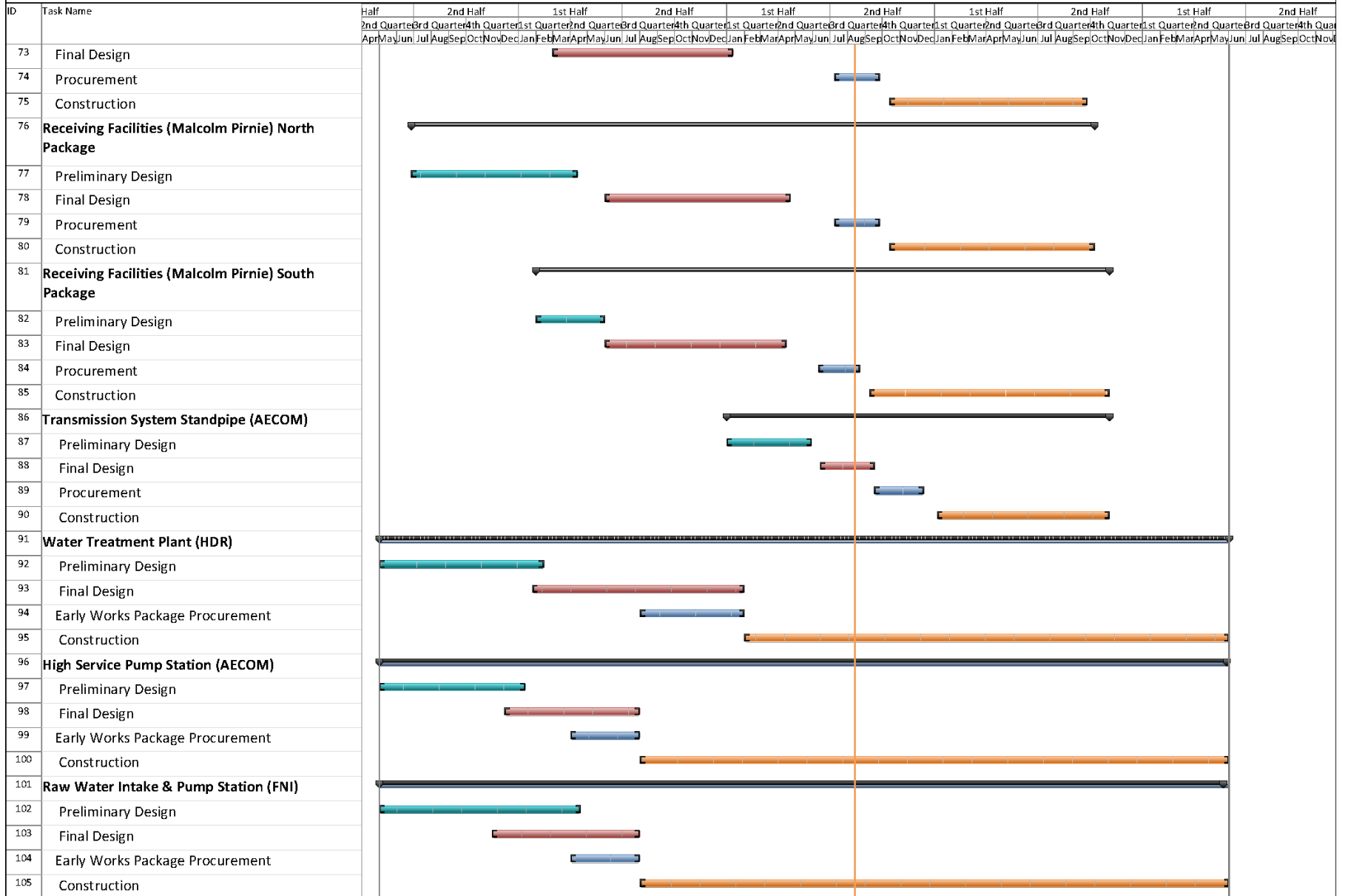


Exhibit 2

GRP Program Estimate-At-Completion As of July 31, 2013

SERVICES	ESTIMATE-AT-COMPLETION
Pre-Engineering Phase Services	\$ 4,692,437
(GRP Development, Environmental Studies, Pilot Plant, Surface Water Treatment Plant Site Survey)	
Engineering Phase Services	\$ 45,510,875
(Planning, Preliminary Engineering, Final Engineering, Geotechnical, Survey, Metes & Bounds, Subsurface Utility Investigation, Environmental)	
Construction Phase Services	\$ 27,533,818
(Engineering Services During Construction, Construction Management & Inspection [Transmission System], Construction Administration & Inspection [SWF], Material Testing)	
Construction	\$ 389,766,935
(Surface Water Transmission System, Raw Water Intake and Pump Station, Surface Water Treatment Plant, High Service Pump Station and Ground Storage Tanks, Surface Water Receiving Facilities, Infrastructure, Buildings, Roadways, Site Security, Access Roadways)	
Transmission Segment C1 - Construction	\$ 7,065,693
Transmission Segment C2 - Construction	\$ 11,988,094
Transmission Segment C3 - Construction	\$ 5,220,931
Transmission Segment C4 - Construction	\$ 4,465,360
Transmission Segment T1 - Construction	\$ 15,248,034
Transmission Segment T2 - Construction	\$ 14,053,125
Transmission Segment T3 - Construction	\$ 10,801,955
Transmission Segment W1 - Construction	\$ 16,207,322
Transmission Segment W2 - Construction	\$ 33,022,632
Transmission Segment W3 - Construction	\$ 18,502,167
Transmission Segment W4 - Construction	\$ 6,391,341
Transmission System Standpipe	\$ 1,756,241
Receiving Facilities - Construction	\$ 17,340,985
Surface Water Facilities CMAR (GMP)	\$ 190,704,740
Transmission System Fiber Optic - Construction	\$ 4,282,788
Permanent Access Roadway Construction	\$ 7,705,000
Building No. 1; Access Road; Vegetative Buffer; Construction Materials Testing; SWF Site Vegetation Management; Sanitary Sewer/Access Rd. Relocation	\$ 4,399,773
Other Offsite Construction (Transmission Line Utility Relocations, Receiving Facility Improvements)	\$ 17,144,829
Non-Project Specific Contingency	\$ 3,465,925
Program Management	\$ 10,722,757
(GRP Program Management, Survey, Geotechnical, Transient, Corrosion, Legal Consultants)	
Land Acquisition	\$ 12,278,302
(Legal, Appraisal, Title Research, Land Acquisition Consultants) ⁽¹⁾	
Total ⁽²⁾:	\$ 490,505,124

⁽¹⁾ Includes revisions to land acquisition cost estimates and recategorizing of contingency.

⁽²⁾ Bond issuance costs are not included.



Exhibit 3

GRP Program Monthly Forecasted Expenditures As of July 31, 2013

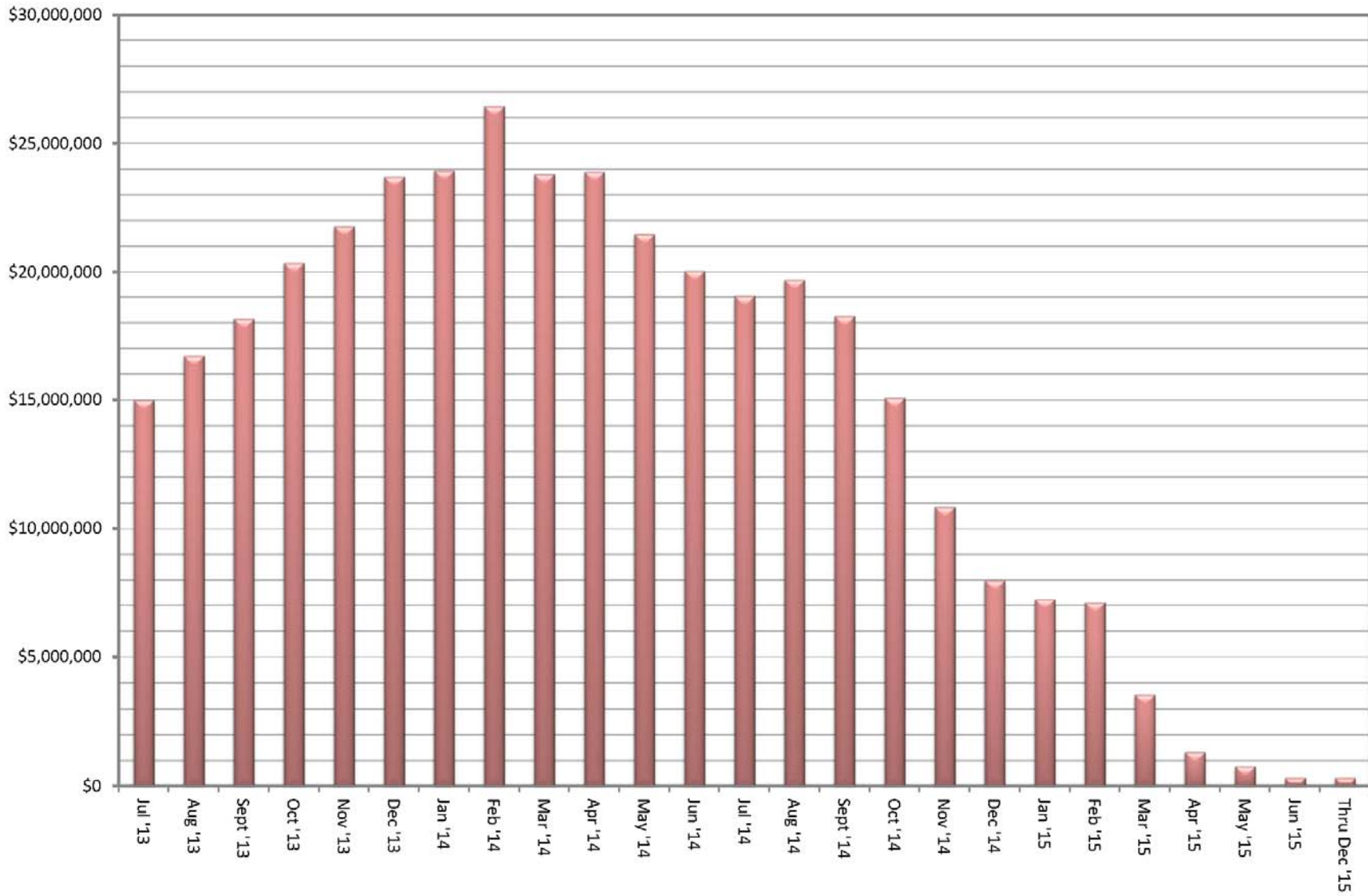


Exhibit 4

GRP Program Fund Data As of July 31, 2013

Funding Source	Amount Authorized by Board To-Date	Interest Rate	Bond Costs	Capitalized Interest	Debt Service Reserve Fund	Net Amount Currently Available	Pending Funding Source
TWDB WIF Bond Issue	\$ 21,500,000.00	.854% - 2.706%	\$ 470,337.08	\$ -	\$ -	\$ 21,029,662.92	
Open Market Bond Issue (Series 2011)	\$ 83,430,358.49	3% - 5.25%	\$ 2,049,764.39	\$ 7,858,241.52	\$ -	\$ 73,522,352.58	
TWDB Dfund Series 2011A	\$ 67,470,000.00	1.22% - 4.97%	\$ 751,195.33	\$ 5,166,233.00	\$ 3,859,151.00	\$ 57,693,420.67	
TWDB Dfund Series 2012	\$ 175,000,000.00	1.17% - 4.62%	\$ 971,769.13	\$ 12,869,175.00	\$ -	\$ 161,159,055.87	
TWDB Dfund Series 2012A	\$ 165,000,000.00	1.26% - 4.62%	\$ 952,269.99	\$ 14,139,669.00	\$ 16,500,000.00	\$ 133,408,061.01	
Subtotal Approved Amounts	\$ 512,400,358.49		\$ 5,195,335.92	\$ 40,033,318.52	\$ 20,359,151.00	\$ 446,812,553.05	\$ -
Future Series 2013 (Est.)	\$ 39,850,000.00	4.50%	\$ 628,750.00	\$ 3,214,292.00	\$ 3,073,489.00	\$ -	\$ 32,933,469.00
Future Series 2014 (Est.)	\$ 12,085,000.00	4.54%	\$ 321,200.00	\$ 1,004,698.00	\$ -	\$ -	\$ 10,759,102.00
Subtotal Future Amounts	\$ 51,935,000.00		\$ 949,950.00	\$ 4,218,990.00	\$ 3,073,489.00	\$ -	\$ 43,692,571.00
Totals	\$ 564,335,358.49		\$ 6,145,285.92	\$ 44,252,308.52	\$ 23,432,640.00	\$ 446,812,553.05	\$ 43,692,571.00

Notes:

1. These values do not include investment income.
2. Green items are estimates only.
3. Series 2011 bond costs include \$681,132.45 for bond insurance and \$459,709.50 for underwriter's discount.



Exhibit 5

Monthly GRP Program Financing Report

Fiscal Year 2013

Through July 31, 2013

	TWDB WIF	Open Market (Series 2011)	TWDB Dfund (Series 2011A)	TWDB Dfund (Series 2012)	TWDB Dfund (Series 2012A)	Totals
A. Program Budget						
Bond Issue Amount	\$ 21,500,000.00	\$ 83,430,358.49	\$ 67,470,000.00	\$ 175,000,000.00	\$ 165,000,000.00	\$ 512,400,358.49
Total Investment	\$ 21,500,000.00	\$ 83,430,358.49	\$ 67,470,000.00	\$ 175,000,000.00	\$ 165,000,000.00	\$ 512,400,358.49
B. Contracted Costs						
Contracts Completed	\$ 17,663,562.84	\$ 17,692,022.96	\$ 2,583,730.80	\$ -	\$ -	\$ 37,939,316.60
Current Contract Values	\$ 3,347,579.00	\$ 34,205,134.53	\$ 33,738,023.75	\$ 161,159,055.87	\$ 107,821,303.49	\$ 340,271,096.64
Change Orders	\$ -	\$ 2,103,555.17	\$ 173,005.39	\$ -	\$ -	\$ 2,276,560.56
Project Close Out	\$ (353,592.02)	\$ (486,083.79)	\$ -	\$ -	\$ -	\$ (839,675.81)
Total	\$ 20,657,549.82	\$ 53,514,628.87	\$ 36,494,759.94	\$ 161,159,055.87	\$ 107,821,303.49	\$ 379,647,297.99
C. Expenditures						
Paid Previous Fiscal Years	\$ 19,966,012.81	\$ 24,949,084.37	\$ 478,705.50	\$ -	\$ -	\$ 45,393,802.68
Paid Current Fiscal Year	\$ 464,602.74	\$ 16,268,744.91	\$ 11,802,512.05	\$ 30,818,972.23	\$ 921,851.25	\$ 60,276,683.18
Issuance Costs	\$ 470,337.08	\$ 2,049,764.39	\$ 751,195.33	\$ 971,769.13	\$ 952,269.99	\$ 5,195,335.92
Debt Service Reserve Fund	\$ -	\$ -	\$ 3,859,151.00	\$ -	\$ 16,500,000.00	\$ 20,359,151.00
Capitalized Interest	\$ -	\$ 7,858,241.52	\$ 5,166,233.00	\$ 12,869,175.00	\$ 14,139,669.00	\$ 40,033,318.52
Total	\$ 20,900,952.63	\$ 51,125,835.19	\$ 22,057,796.88	\$ 44,659,916.36	\$ 32,513,790.24	\$ 171,258,291.30
D. Remaining						
Uncontracted Funds	\$ 372,113.10	\$ 20,007,723.71	\$ 21,198,660.73	\$ (0.00)	\$ 25,586,757.52	\$ 67,165,255.06
Fund Balance *	\$ 599,047.37	\$ 32,304,523.30	\$ 45,412,203.12	\$ 130,340,083.64	\$ 132,486,209.76	\$ 341,142,067.19

*Excluding net investment income



Exhibit 6

GRP Program Current Authorizations As of July 31, 2013

Surface Water Transmission System - Consultant Services

Project	Firm	Amount Authorized by Board
T1	Jones & Carter	\$ 2,202,879.75
T2	Klotz Associates	\$ 1,878,727.49
T3	Espey	\$ 1,892,322.47
W1	LAN	\$ 2,729,523.15
W2	Binkley & Barfield	\$ 2,615,027.59
W3	Cobb Fendley	\$ 3,564,282.36
W4	LJA	\$ 925,698.17
C1	Dannenbaum	\$ 815,523.94
C2	Schaumburg & Polk	\$ 1,236,623.21
C3	Kimley Horn	\$ 807,780.10
C4	RG Miller	\$ 309,230.05
WRFs	Malcom Pirnie/Arcadis	\$ 2,304,173.97
CM&I	Kellog Brown & Root	\$ 8,124,254.62
Subtotal - Surface Water Transmission System		\$ 29,406,046.87

Surface Water Facilities - Consultant Services

Project	Firm	Amount Authorized by Board
WTP	HDR Engineering	\$ 18,583,396.92
HSPS	AECOM	\$ 4,799,416.39
StandPipe	AECOM	\$ 192,281.00
RWI&PS	Freese & Nichols	\$ 3,954,773.35
CA&I	CDMSmith	\$ 5,348,633.00
Subtotal - Surface Water Facilities		\$ 32,878,500.66

Program Consultant Services & Other Projects

Project	Firm	Amount Authorized by Board
Program Management	Brown & Gay	\$ 10,695,245.06
Program Survey	Landtech	\$ 514,524.00
Program Geotechnical	Raba Kistner	\$ 145,260.00
Prog Transient Analyses	AECOM	\$ 284,178.11
Access Rd/Misc Service	ACES	\$ 860,610.60
SWF Surveying	S&V Surveying	\$ 66,875.00
Land Acq	KDM	\$ 401,592.70
Land Acq	PAS	\$ 1,413,334.88
Program Environmental	Half Associates	\$ 1,063,698.87
Program Fiber Optics	EMA	\$ 736,357.00
Program Corrosion	V&A Consulting Engineers	\$ 866,676.00
Program Services & Projects	Multiple	\$ 5,023,735.44
Subtotal - Program Consultant Services & Other Projects		\$ 22,072,087.66

Exhibit 6 (con't)

GRP Program Current Authorizations As of July 31, 2013

Active or Completed Construction Contracts

Project	Firm	Amount Authorized by Board
GRP Bldg No. 1	Brookstone	\$ 2,008,673.00
Bldg No. 1/Aqua Tx CMT	Aviles Engineering	\$ 64,343.15
Landscape Buffer	Key-Scape Landscape	\$ 53,090.00
Temp Access Road	Lindsey Construction	\$ 977,583.60
Access Road CMT	Terracon Consultants	\$ 10,359.70
Access Road Overlay and Detention	AAA Asphalt	\$ 412,284.59
Access Road Landscape	TreeScapes	\$ 34,165.00
Aqua Texas Sewer	Randy Roan Construction	\$ 535,181.17
Bldg No. 1 Fiber Line	Preferred Technologies	\$ 231,157.56
Surface Water Plant (CMAR)	McCarthy	\$ 190,704,740.00
SWF CMT	Geotest	\$ 1,976,659.00
Transmission Sytem Utility Relocations	Various	\$ 1,992,417.46
Transmission System CMT (T3, W1, W2, W3, W4)	Aviles	\$ 1,601,330.00
Transmission System CMT (T1, T2, C1, C2, C3, C4)	Terracon	\$ 1,006,711.25
Transmission Segment T1	S.J. Louis Construction of Texas Ltd	\$ 14,521,937.14
Transmission Segment T2	Texas Sterling Construction Company	\$ 13,383,928.25
Transmission Segment T3	S.J. Louis Construction of Texas Ltd	\$ 10,287,576.00
Transmission Segment W1A	Huff & Mitchell, Inc.	\$ 8,222,000.50
Transmission Segment W1B	Texas Sterling Construction Company	\$ 7,213,544.50
Transmission Segment W2A	Texas Sterling Construction Company	\$ 15,288,526.00
Transmission Segment W2B	Texas Sterling Construction Company	\$ 16,161,600.00
Miscellaneous	Other Construction Contracts, Permits, Fees, etc.	\$ 307,806.10
Subtotal - Construction Contracts		\$ 286,995,613.97

Totals

	Amount Authorized by Board
Surface Water Transmission System - Consultant Services	\$ 29,406,046.87
Surface Water Facilities - Consultant Services	\$ 32,878,500.66
Program Consultant Services & Other Projects	\$ 22,072,087.66
Active or Completed Construction Contracts	\$ 286,995,613.97
Total	\$ 371,352,249.16



Exhibit 7

GRP Program Land Acquisition Summary As of July 31, 2013

Project	Anticipated Number of Easements to Acquire	Easements Acquired This Month	Total Easements Acquired and Filed
Transmission System Segment T1	62	4	61
Transmission System Segment T2	0	0	0
Transmission System Segment T3	22	0	8
Transmission System Segment C1	16	0	10
Transmission System Segment C2	77	2	28
Transmission System Segment C3	32	0	17
Transmission System Segment C4	4	0	2
Transmission System Segment W1	32	0	17
Transmission System Segment W2	8	0	0
Transmission System Segment W3	178	2	79
Transmission System Segment W4	7	0	1
Totals:	438	8	223



Exhibit 8

San Jacinto River Authority

Groundwater Reduction Plan Schedule of Revenues & Expenses - Actual & Budget For the Eleven Months Ending July 31, 2013

	July	Fiscal Year To Date				Fiscal Budget	
	Actual	Actual	Budget	Variance	% Variance	Total Year Budget	Actual YTD % of Tot Yr. Budget
OPERATING REVENUES							
Water sales							
GRP pumping fees	\$ 2,488,276	\$ 20,395,631	\$ 19,552,919	\$ 842,712	4%	\$ 21,997,181	93%
TOTAL OPERATING REVENUES	\$ 2,488,276	\$ 20,395,631	\$ 19,552,919	\$ 842,712	4%	\$ 21,997,181	93%
OPERATING EXPENSES							
Payroll & employee benefit expenses	\$ 211,516	\$ 2,432,229	\$ 3,707,138	\$ 1,274,908	34%	\$ 4,044,146	60%
Professional fees	15,696	176,331	327,337	151,006	46%	344,000	51%
Purchased & contracted services	10,105	102,193	217,021	114,828	53%	236,750	43%
Supplies, materials & utilities	12,305	2,173,554	2,509,980	336,427	13%	2,533,168	86%
Maintenance repairs, parts & rentals	755	10,636	14,080	3,444	24%	15,360	69%
General & administration	50,922	772,903	1,030,626	257,723	25%	1,124,319	69%
TOTAL OPERATING EXPENSES	\$ 301,298	\$ 5,667,846	\$ 7,806,182	\$ 2,138,336	27%	\$ 8,297,743	68%
NON-OPERATING REVENUES & EXPENSES							
Interest on investments	\$ 1,762	\$ 803,075	\$ 2,174,244	\$ (1,371,169)	(63%)	\$ 2,369,785	34%
Other revenues	-	1,430	-	1,430	100%	-	100%
Interest expense	(1,661,355)	(16,083,402)	(15,839,617)	(243,785)	2%	(17,540,882)	92%
TOTAL NON-OPERATING (EXCLUDING ITEMS NOT BUDGETED)	\$ (1,659,593)	\$ (15,278,897)	\$ (13,665,373)	\$ (1,613,524)	12%	\$ (15,171,097)	101%
NET INCOME (LOSS) (EXCLUDING ITEMS NOT BUDGETED)							
	\$ 527,385	\$ (551,111)	\$ (1,918,636)	\$ 1,367,524	(71%)	\$ (1,471,659)	37%
NON-OPERATING REVENUES & EXPENSES (NOT BUDGETED)							
Depreciation	\$ (21,900)	\$ (231,649)	\$ -	\$ (231,649)	100%	\$ -	100%
Amortized debt issuance expense	(14,142)	(155,563)	-	(155,563)	100%	-	100%
TOTAL NON-OPERATING (NOT BUDGETED)	\$ (36,042)	\$ (387,213)	\$ -	\$ (387,213)	100%	\$ -	100%
NET INCOME (LOSS) (BUDGETED AND NOT BUDGETED)							
	\$ 491,342	\$ (938,324)	\$ (1,918,636)	\$ 980,312	(51%)	\$ (1,471,659)	64%



Exhibit 8 (con't)

GRP Division

Clarification of Actual & Budget Variances

(in thousands)

Category	Driver	July 2013	FYTD 2013
GRP Pumping Fees	Usage variance due to weather conditions.	(9)	843
Payroll and related expenses	Budgeted positions not filled per schedule.	125	1,275
Professional Fees	Professional fees less than budgeted.	1	151
Purchased & Contracted Services	Purchased and contracted services less than budgeted.	10	115
Supplies, Materials, Utilities, Maintenance, Repairs, Parts & Rentals	Additional Water Supply, costs not yet realized.	-	300
	Reservation Fees 2012 true-up	-	33
	Travel, fuel, office supplies, phones, utilities, recruiting and misc. expenses less than budgeted.	11	7
General & Administration	Allocated labor and related expenses less than budgeted, anticipated a quicker rate of growth than has been actualized.	43	258
Non-Operating	Interest/Investment Income	(197)	(1,370)
	Depreciation expense	(22)	(232)
	Bond Issuance Cost Amort expense	(14)	(156)
	Bond interest expense	40	(244)
		<u>(12)</u>	<u>980</u>



Exhibit 9

GRP Program Monthly Meeting Log For July 2013

Meeting	Subject of Meeting	Location	Date	Participants
Pre-Proposal Meeting for Segment C3	RFP 13-025	G&A Building	7/9/2013	SJRA Staff, GRP Program Team and Potential Offerors
Junior League Presentation - Commercial Real Estate Women of Houston	Water and How It Affects Real Estate	Junior League of Houston	7/10/2013	GRP Division Manager and Public Relations Manager
Construction Communication Team Meeting	Transmission Line Construction	GRP Building 1	7/16/2013	SJRA Staff and Representatives from Community
Proposal Opening - South Receiving Facilities	RFP 13-020 - South Receiving Facilities	G&A Building	7/18/2013	SJRA Staff, GRP Program Team and Offerors
GRP Review Committee	GRP Items Going Before SJRA Board of Directors	G&A Board Room	7/22/2013	Review Committee, GRP Program Team, General Public
Pre-Proposal For Segment C4	RFP 13-026	G&A Board Room	7/23/2013	SJRA Staff, GRP Program Team and Offerors
Pre-Proposal Meeting for North Receiving Facilities	RFP 13-019	G&A Board Room	7/24/2013	SJRA Staff, GRP Program Team and Offerors
Opening of Proposals - Segment C3	RFP 13-025	G&A Board Room	7/24/2013	SJRA Staff, GRP Program Team and Offerors
SJRA Board of Directors Meeting	Agenda Related	G&A Offices	7/25/2013	SJRA Board of Directors, GRP Program Team staff, General Public
Pre-Proposal Meeting - CMMS Software and Implementation Services	CMMS Software and Implementation Services	G&A Offices	7/30/2013	SJRA Staff, GRP Program Team and Offerors
Land Acquisition Conference Calls	Land Acquisition	GRP Building 1, Andrews Kurth	Weekly	Andrews Kurth, SJRA



Exhibit 9 (Con't)

GRP Program Monthly Meeting Log For July 2013

Meeting	Subject of Meeting	Location	Date	Participants
W1A, W1B and W2A Progress Meetings	W1A, W1B and W2A	GRP Building 1	Weekly	SJRA Staff, GRP Program Team and Consultant Team
Segments T1 and T2 Progress Meetings	T1 and T2	GRP Building 1	Weekly	SJRA Staff, GRP Program Team and Consultant Team
W1A and W1B Monthly Construction Meetings	W1A and W1B	GRP Building 1	Monthly	SJRA Staff, GRP Program Team and Consultant Team
Segments T3, W3, W4, C1, C2 and C3 Monthly Status Meetings	Segments T3, W3, W4, C1, C2 and C3	GRP Building 1	Monthly	SJRA Staff, GRP Program Team and Consultant Team
Segment T3 Weekly Progress Meeting	Segment T3	GRP Building 1	Weekly	SJRA Staff, GRP Program Team and Consultant Team



Surface Water Facilities Construction Photos



EXHIBIT 10 SWF Construction Photos

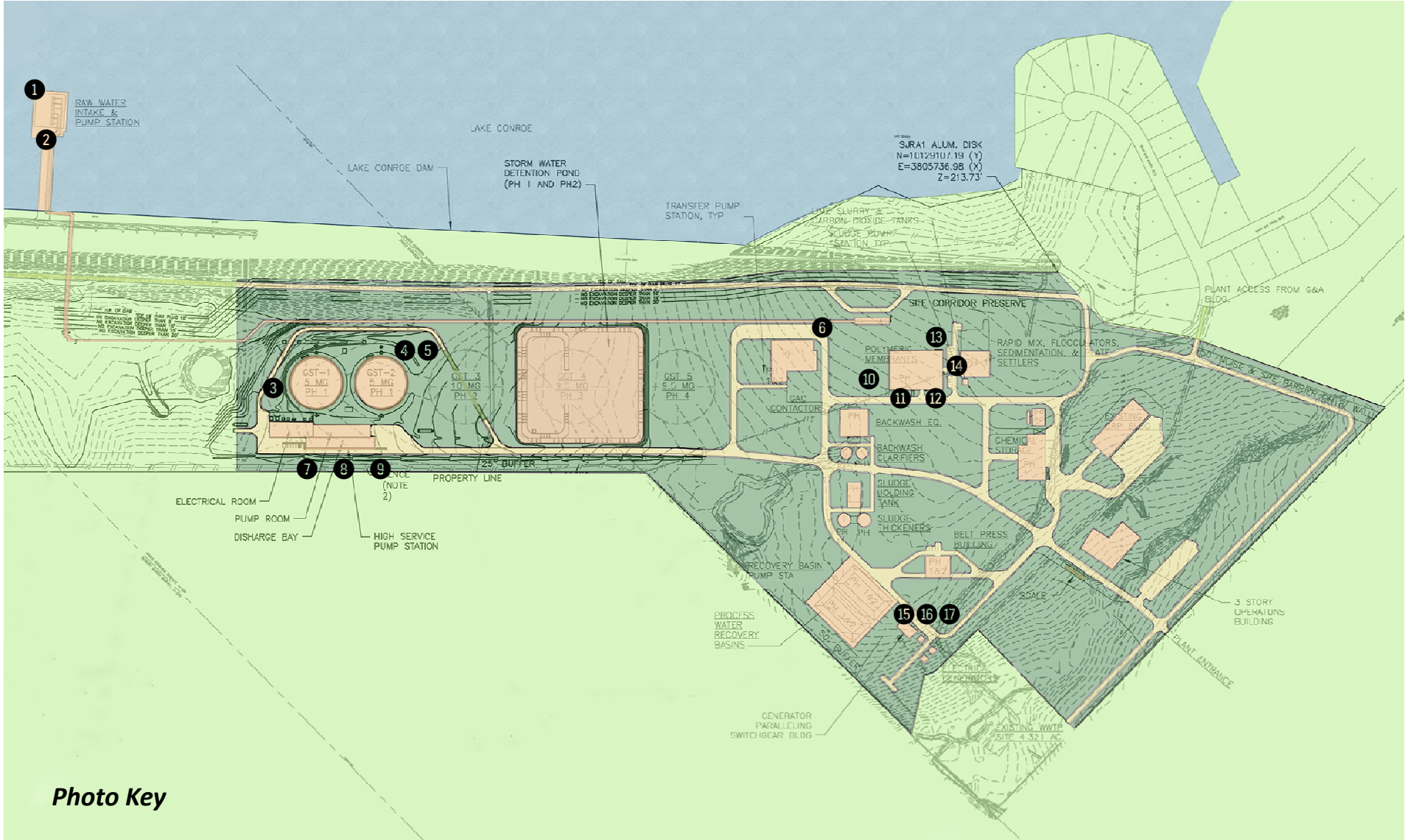


Photo Key



EXHIBIT 10 (con't) SWF Construction Photos



❶ *Raw Water Pump Station at end of Pier*

EXHIBIT 10 (con't) SWF Construction Photos



② *Raw Water Pump Station - Future Pump Building Location*

EXHIBIT 10 (con't) SWF Construction Photos



③ ④ ⑤ *Inside GST No. 2, Wire Wrapping GST No. 1, and Spools of Wire Used in Wrapping Process*

EXHIBIT 10 (con't) SWF Construction Photos



⑥ *GAC Facility - Basin Walls Under Construction*

EXHIBIT 10 (con't) SWF Construction Photos



⑦ High Service Pump Station - Scaffolding for Masonry Work



⑧ High Service Pump Station - Manifold Piping On-site



⑨ High Service Pump Station Discharge Bay

EXHIBIT 10 (con't) SWF Construction Photos



10 11 12 13 Backfilling and Electrical Conduit Installation at Membrane Facilities

EXHIBIT 10 (con't) SWF Construction Photos



14 Pretreatment Facility



15 Installation of the Generator Building Begins



16 Switchgear Building Pad



17 Conduit Installation at Electrical Switchgear Building

Transmission Line Construction Photos Segment T1



EXHIBIT 11 Transmission Line Construction Photos

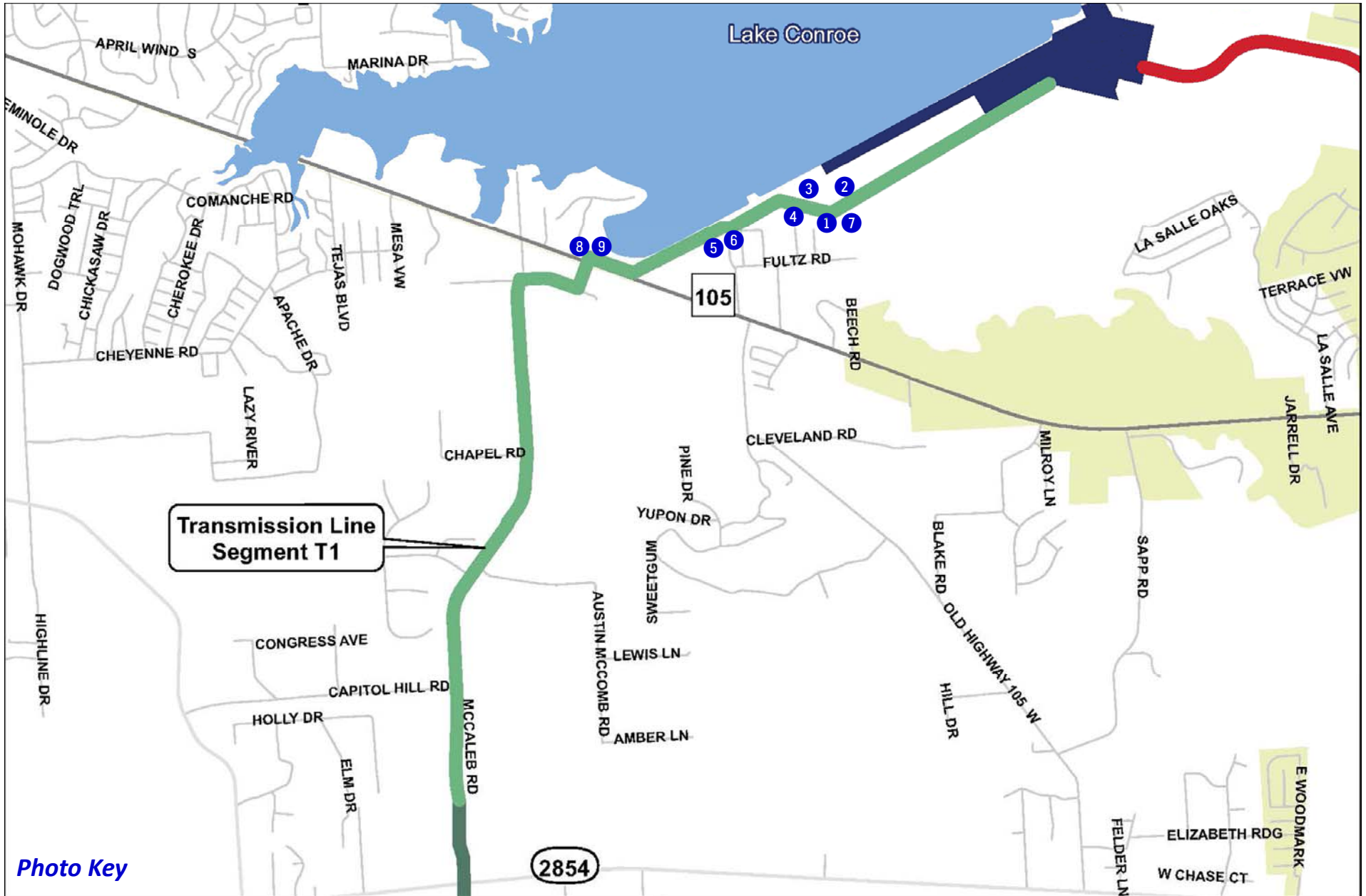


EXHIBIT 11 (con't) Transmission Line Construction Photos



① Segment T1 Pipe Installation at G&A Building

EXHIBIT 11 (con't) Transmission Line Construction Photos



② Segment T1 Workers Cut a Section of 60-inch Pipe



③ Segment T1 60-inch Pipe West of Spillway Channel



④ Segment T1 Tunnel Access at G&A Building



⑥ Segment T1 Dewatering Operation

EXHIBIT 11 (con't) Transmission Line Construction Photos



⑤ *Segment T1 - Entrance at Dam Site Road*

EXHIBIT 11 (con't) Transmission Line Construction Photos



1 Segment T1 from G&A Building

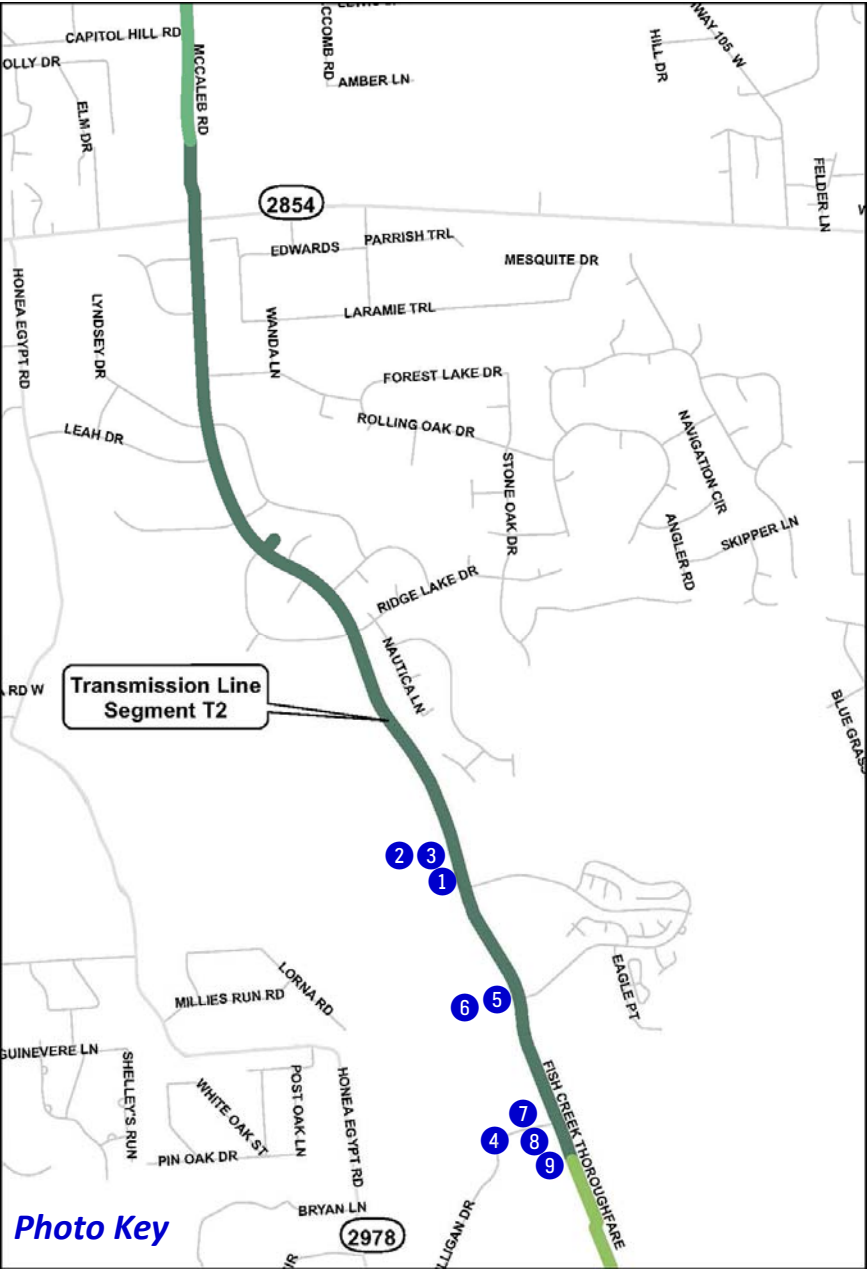


8 Segment T1 Tunnel Under Highway 105



9 Segment T1 Tunnel Under Highway 105

EXHIBIT 11 (con't) Transmission Line Construction Photos



1 Tunnel Boring Machine along Segment T2



EXHIBIT 11 (con't) Transmission Line Construction Photos



② Excavated Material Removed by Conveyor Belt



③ Tunnel Boring Machine Access Excavation



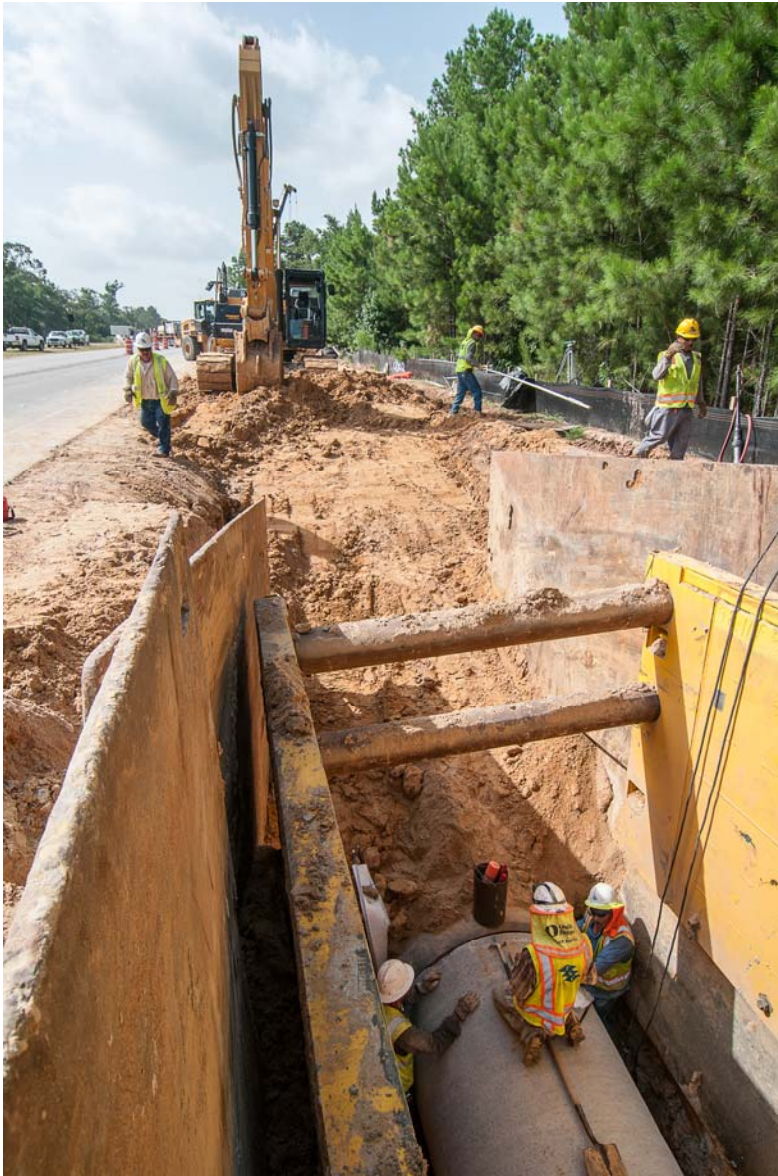
④ Construction Equipment Unloaded at Fish Creek and Mulligan Drive

EXHIBIT 11 (con't) Transmission Line Construction Photos



⑤ 60-inch Pipe Installed by Open Cut Construction Along Fish Creek Thoroughfare

EXHIBIT 11 (con't) Transmission Line Construction Photos



⑥ ⑦ 60-inch Pipe Installation Along Fish Creek Thoroughfare

EXHIBIT 11 (con't) Transmission Line Construction Photos



8 Project Sign for Segment T2 - Fish Creek at Mulligan Drive



9 Tunnel Shaft for Segment T2 - Fish Creek at Mulligan Drive



10 Installation of Liner Pipe for Segment T2 - Fish Creek at Mulligan Drive



11 Liner Pipe for Segment T2 - Fish Creek at Mulligan Drive

Transmission Line Construction Photos Segment W1A



EXHIBIT 11 (con't) Transmission Line Construction Photos

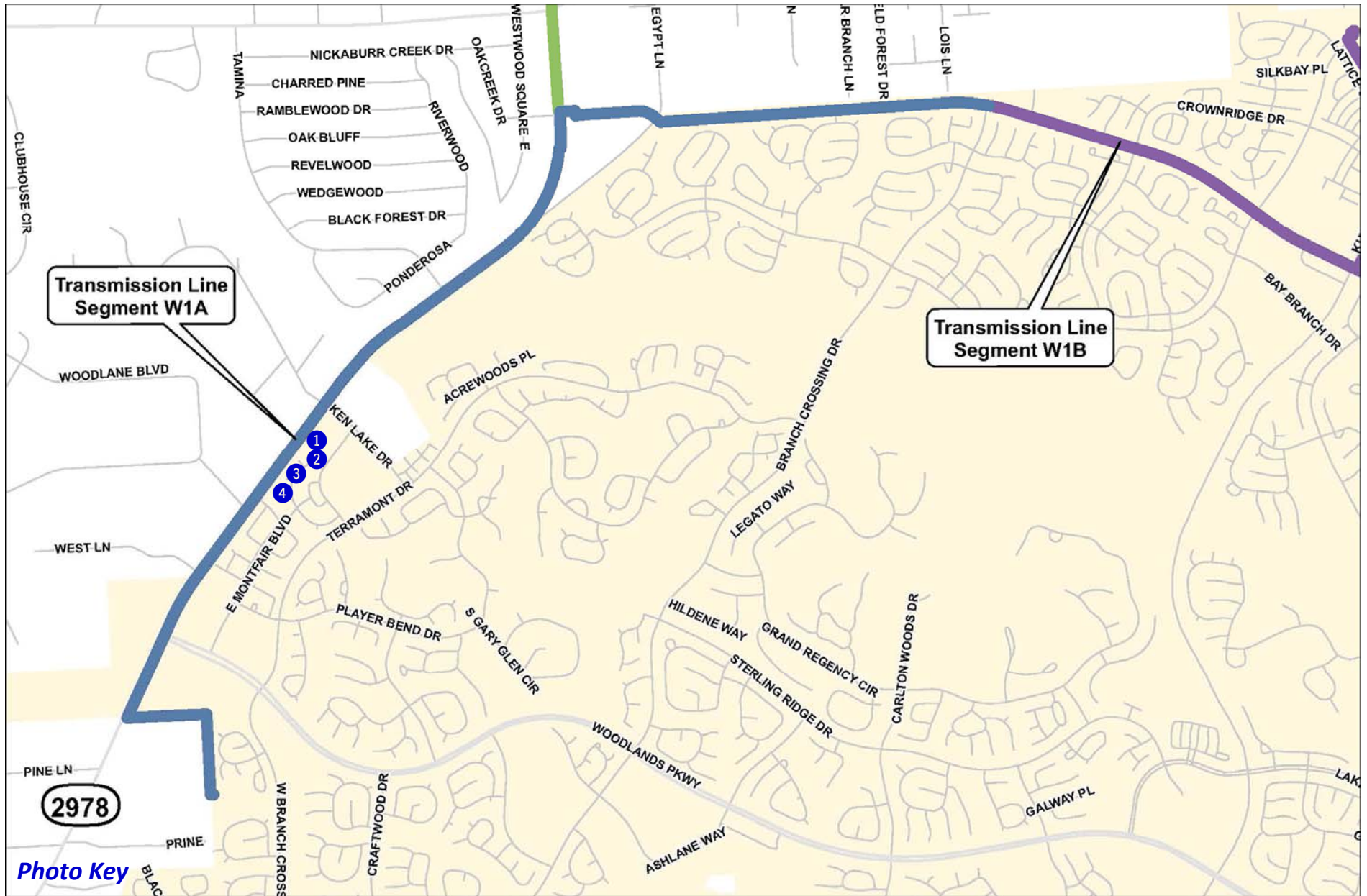


EXHIBIT 11 (con't) Transmission Line Construction Photos



① ② ③ ④ *Segment W1A Along FM 2978 - Trenchless Construction of 16-inch Waterline*

**Transmission Line Construction Photos
Segment W1B**



EXHIBIT 11 (con't) Transmission Line Construction Photos

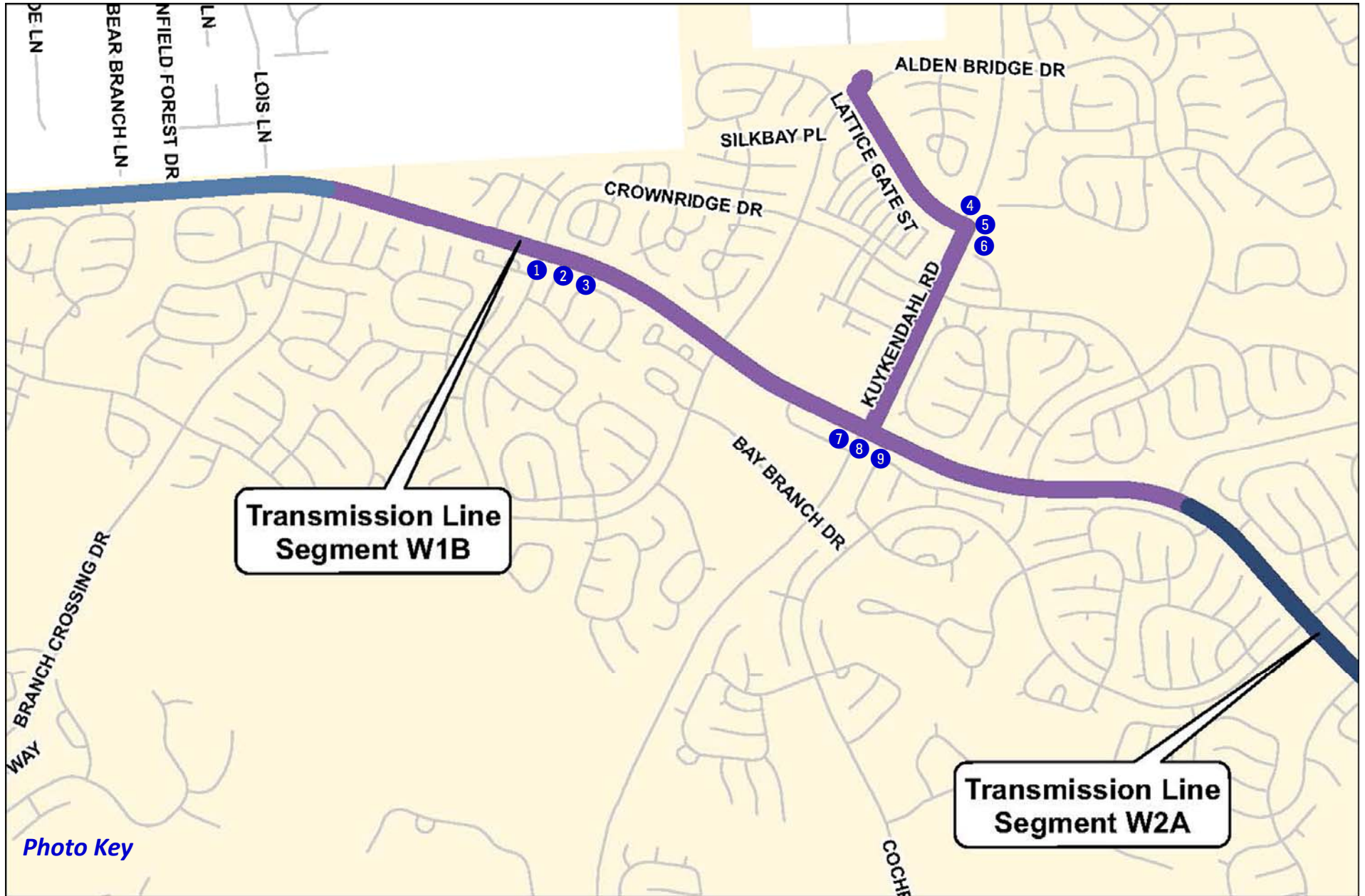


EXHIBIT 11 (con't) Transmission Line Construction Photos



① ② ③ *Segment W1B Installation of Tunnel Shaft for Boring Under Crownridge at Research Forest*



EXHIBIT 11 (con't) Transmission Line Construction Photos



④ Segment W1B Panther Branch at Kuykendahl

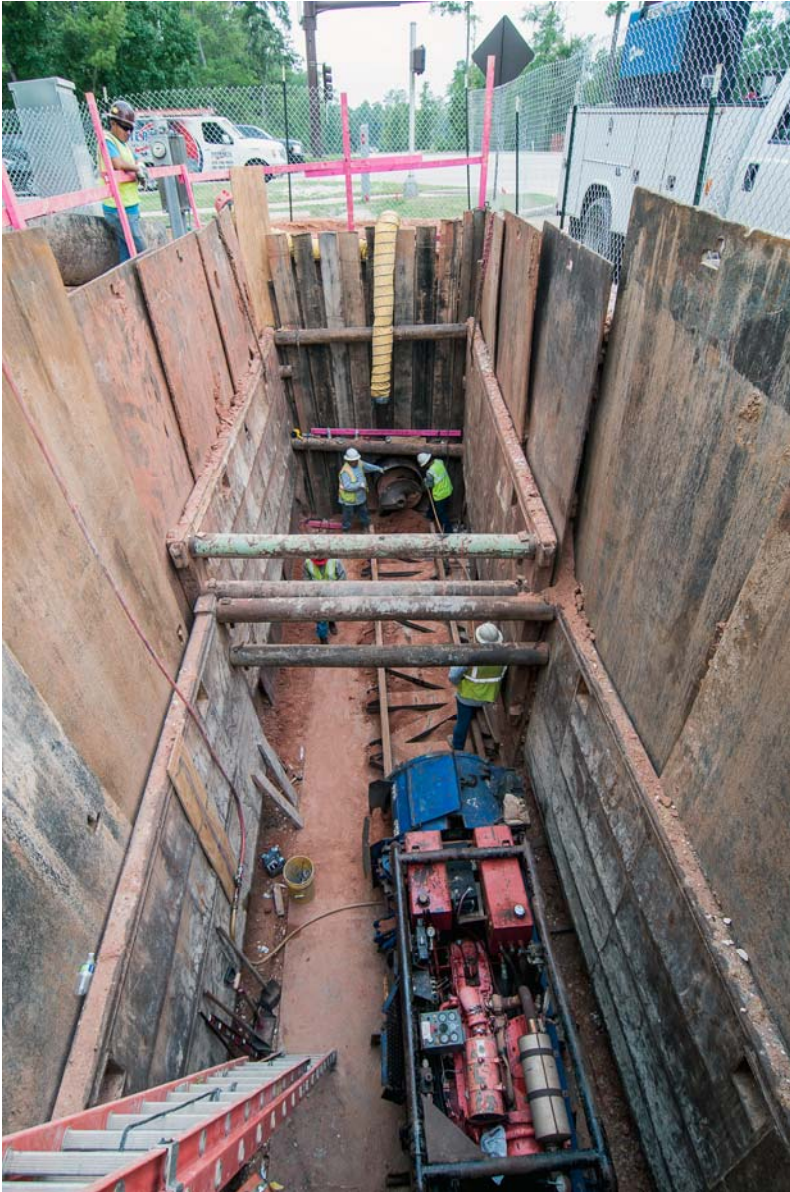


⑤ Segment W1B Future Kuykendahl 16-inch and 20-inch Waterline Crossing



⑥ Segment W1B - 20-inch PVC Pipe Fitted with Spacers for Installation in Casing Pipe

EXHIBIT 11 (con't) Transmission Line Construction Photos



7 Segment W1B Tunnel on Research at Kuykendahl



8 Segment W1B SJRA Project Sign at Research and Kuykendahl



9 Segment W1B Auger Bit