



GROUNDWATER REDUCTION PLAN PROGRAM

MONTHLY PROGRESS REPORT - JUNE 2013



TABLE OF CONTENTS

Table of Contents	i	4.2 Financial Report	4-1
Acronyms and Definitions	ii	4.3 Invoices/Applications for Payment	4-1
1.0 Planning	1-1	4.4 Contract Amendments and Change Orders	4-2
1.1 Strategic	1-1	4.5 Claims	4-2
1.2 Engineering and Construction	1-1	4.6 CIP Cash Flow	4-2
1.3 Meetings	1-1	4.7 CIP Budget Estimates at Completion	4-2
2.0 Schedule	2-1	4.7.1 GRP Program	4-2
2.1 Engineering	2-1	4.7.2 GRP Projects	4-2
2.2 State Agency Coordination	2-1	4.8 Land Acquisition	4-2
2.3 Construction	2-2	5.0 Quality Assurance	5-1
3.0 Procurement	3-1	5.1 Final Design	5-1
3.1 Solicitations	3-1	5.2 Pre-Construction	5-1
3.2 Contract Awards	3-1	5.3 Construction	5-1
3.3 Process and Procedures	3-1	6.0 Exhibits	6-1
3.4 Look Ahead	3-1		
4.0 Cost Report and Financial Considerations	4-1		
4.1 GRP Program and GRP Project CIP Budget(s)	4-1		



ACRONYMS AND DEFINITIONS

ACRONYMS

CA&I	Construction Administration and Inspection
CCT	Construction Communication Team
CIP	Capital Improvement Project
CM&I	Construction Management and Inspection
CMAR	Construction Manager at Risk
CMT	Construction Material Testing
CSB / P	Competitive Sealed Bid / Proposal
EA	Environmental Assessment
EAC	Estimate At Completion
GIS	Geographic Information System
GRP	Groundwater Reduction Plan
GST	Ground Storage Tank
HSPS	High Service Pump Station
LSGCD	Lone Star Groundwater Conservation District
LVGU	Large Volume Groundwater User
PER	Preliminary Engineering Report
PMP	Program Management Plan
PSA	Professional Services Agreement
QA	Quality Assurance
RFB / Q / P	Request For Bids / Qualifications / Proposals
RWI / RWPS	Raw Water Intake / Raw Water Pump Station
SJRA	San Jacinto River Authority
SOQ	Statement Of Qualifications
SWF	Surface Water Facilities (SWTP, HSPS and RWI)
SWRF	Surface Water Receiving Facilities
SWTP	Surface Water Treatment Plant
TBD	To Be Determined
TCEQ	Texas Commission on Environmental Quality
TWDB	Texas Water Development Board
TxDOT	Texas Department Of Transportation
WIF	Water Infrastructure Fund

DEFINITIONS

GROUNDWATER REDUCTION PLAN (GRP)	The document developed and filed with the LSGCD indicating SJRA's plan to reduce the permitted 2009 groundwater pumpage of its GRP Participants by 30%. The GRP is administered by the SJRA, including any supplements, revisions, or amendments.
GRP PROGRAM TEAM	SJRA staff, Program Management Consultant (Brown & Gay Engineers, Inc.) staff, and technical consultants working interdependently toward meeting the goals of the Groundwater Reduction Plan.
GRP ADMINISTRATOR	The SJRA General Manager's designee who administers the SJRA Groundwater Reduction Plan and GRP Contract with GRP Participants.
GRP CONTRACT	Contract between the SJRA and a Participant to be included in the SJRA's efforts to meet the surface water conversion requirements mandated by the LSGCD.
JOINT GRP	GRP which is prepared to include (takes into account) LVGUs who have executed a GRP Contract with the SJRA to join the SJRA's GRP. Contracted LVGUs obtain LSGCD groundwater reduction regulation compliance through the SJRA's Joint GRP without preparing and submitting a GRP.
LARGE VOLUME GROUNDWATER USER(S) (LVGU)	Any person or entity that, through a single well or a combination of wells, actually produces or is authorized by permit(s) issued by the LSGCD to produce 10 million gallons or more of groundwater annually on or after January 1, 2008.
PARTICIPANT(S)	Regulated User(s) that enters into and remains subject to a written agreement with the SJRA to be included in the SJRA's GRP and includes the legal successors or assigns of Participant(s).
REGULATED USER(S)	Any public or private entity or person that is or becomes subject to the District Regulatory Plan established by the LSGCD and includes any amendments, revisions or supplements thereto as may be adopted by the LSGCD.
SJRA GRP DIVISION	Division of the SJRA responsible for GRP compliance, and the management, administration, operation and maintenance of the surface water facilities and surface water transmission system.



1.0 PLANNING

The GRP Program Team meets regularly for the purposes of setting performance expectations and goals of the GRP Program, identifying the efforts required to achieve these objectives, evaluating the effectiveness of such efforts, and modifying those efforts based upon both internal and external performance evaluations.

1.1 STRATEGIC

As construction progresses on the transmission line segments, a major area of focus is on public relations and communications. Throughout the year, the public relations manager and GRP manager met with a variety of organizations, local officials, homeowner associations, realtor groups and business owners to explain in detail the GRP Program, the possible impacts of construction within their respective areas, and the efforts put forth by SJRA to address the public's questions and concerns. The GRP website is also a useful tool to ascertain important information about the program. It has evolved in the past few months with the addition of detailed construction brochures related to Conroe, The Woodlands and McCaleb/Fish Creek Thoroughfare, as well as up-to-date construction traffic alerts.

The SWF (Surface Water Facility) is fully in the construction phase. The key effort now is to bring this project to completion, document construction, and focus on start-up details to ensure quality and proper functionality.

With regard to surface water transmission, Notices to Proceed (NTP) were issued for Segments W2A and T3. Contractors have mobilized and activities are underway. As final design is reached on the remaining segments, the Program will move through the procurement phase into construction.

1.2 ENGINEERING AND CONSTRUCTION

All of the Transmission Line Segments are at or nearing the final design stage. Our engineering consultants will provide procurement services by preparing proposal packages and assist in the evaluation of construction proposals. Once construction contracts are awarded, the engineering consultants will provide construction phase services by reviewing submittals and pay applications as work proceeds.

1.3 MEETINGS

The GRP Program Team continued meeting with GRP Program stakeholders this month. They also held GRP Program and GRP Project status meetings as well as monthly and weekly progress meetings with Surface Water Transmission system and Surface Water Facility consultants. A listing of these meetings is attached as *Exhibit 9*.



Trench Box at Transmission Segment W1B

2.0 SCHEDULE

Currently, the GRP Program remains on schedule for the delivery of treated surface water to select Joint GRP Participants on or before January 1, 2016. A simplified GRP Program schedule may be found in attached **Exhibit 1**.

2.1 ENGINEERING

SURFACE WATER TRANSMISSION SYSTEM

Segment T1 – Design is complete with construction underway. Engineering consultant is providing construction phase services.

Segment T2 – Design is complete with construction underway. Engineering consultant is providing construction phase services.

Segment T3 – Design is complete with construction to begin soon. Engineering consultant is providing construction phase services.

Segment W1 – Design is complete with construction underway for Segments W1A and W1B. Engineering consultant is providing construction phase services for both Segments.

Segment W2 – Design is complete and engineering consultant is providing construction phase services on Segment W2A. Final design for Segment W2B is complete and the project proposals were opened on June 25th.

Segment W3 – Design submittal for Segment W3A is 95% complete. Design submittal for Segment W3B is 100% complete.

Segment W4 – Final design is complete. Engineering consultant is providing procurement support services.

Segment C1 – Design is complete for Segments C1A and C1B. Engineering consultant is providing procurement support services.

Segment C2 – Design is complete. Engineering consultant is providing procurement support services.

Segment C3 – Design is complete. Engineering consultant is providing procurement support services.

Segment C4 – Design Consultant is complete. Engineering consultant is providing procurement support services.

Surface Water Receiving Facilities – Design is complete. Engineering consultant is providing procurement support services.

Standpipe - The site has been cleared for geotech boring samples. Samples were collected in June and a 60% design submittal is expected in late July.

SURFACE WATER FACILITIES

Raw Water Intake Pump Station – Design is complete and construction continues.

Surface Water Treatment Plant – Design is complete and construction continues.

High Service Pump Station and Ground Storage Tanks – Design is complete and construction continues.

Fiber Optic Communications System – 90% design is complete and under review by SJRA Program Team.

Construction Management and Inspection (CM&I) – The CM&I team is providing management and inspection for Transmission Segments, T1, T2, W1A, W1B, W2A and T3.

Construction Administration and Inspection (CA&I) – The CA&I staff for the SWF is currently working with the CMAR and SJRA staff to review submittals for the SWF.

Cathodic Protection – The cathodic protection consultant has completed their design effort for the transmission line segments. They have also continued efforts for the construction phase of cathodic protection for the Surface Water Facilities.

2.2 STATE AGENCY COORDINATION

South Receiving Facilities – TWDB completed review of plans and specifications, and issued a Plan Approval letter.

Segment C3 – TWDB completed review of plans and specifications, and issued a Plan Approval letter.

Segment W2B – TWDB completed review of plans and specifications, and issued a Plan Approval letter.

Request for Release of Funds from Escrow - The seventh request for release of escrowed funds was forwarded to TWDB in late June. The requested release will cover construction of Segments T3 and W1A, as well as various engineering services.



2.0 SCHEDULE (CONTINUED)

2.3 CONSTRUCTION

SURFACE WATER TRANSMISSION SYSTEM

All of the transmission line segments are scheduled to begin construction during the remainder of 2013.

Segment T1 - The contractor has mobilized onsite for construction of line segments within SJRA property below the Dam. June activities include dewatering of areas along the outfall channel and tunnel/liner plate installation within SJRA property below the dam. The contractor completed installation of 1,176 feet of 60-inch waterline. Construction of segments along McCaleb Road are not expected to be fully underway until late summer.

Segments T2 - Critical utility location commenced along this line segment as the contractor mobilized equipment for tunnel shaft installations along Fish Creek Thoroughfare.

Segment W1A - The contractor initiated critical utility locations and completed installation of 486 feet of 16-inch fusible PVC pipe near FM 2978.

Segment W1B - The contractor initiated critical utility locations, cleared easements along Kuykendahl in The Woodlands and installed stormwater pollution protection and tree protection fences.



SURFACE WATER RECEIVING FACILITIES

The City of Oak Ridge North water plant modifications construction continued in June. This project includes surface water receiving facilities for the City of Oak Ridge North.

SURFACE WATER FACILITIES

Raw Water Intake - Rebar and formwork installation continues for the building foundation.

Surface Water Treatment Plant - Progress at the Water Treatment Plant is concentrated at three (3) main process structures: Pretreatment, Membrane Building and Granulated Activated Carbon (GAC) Building. At Pretreatment, foundation was installed. Grade beam installation and seal slab at the pump room began at the Membrane Building. This month, placement of the lower foundation at the GAC Building was complete.

High Service Pump Station - The pump room's slab on grade is complete. Rebar installation continues.

Ground Storage Tanks - This month, wall and roof panels were installed at both ground storage tanks.

Miscellaneous Activities - Site clearing began for the GRP Operations Building and the screen wall which separates the construction site from the neighboring subdivision was completed.

3.0 PROCUREMENT

3.1 SOLICITATIONS

This month, solicitations for proposals for construction were made for the following:

- San Jacinto River Authority RFP 13-025—Segment C3 Proposed 16-inch and 20-inch Water Transmission Line
- San Jacinto River Authority RFP 13-020—South Water Receiving Facilities

3.2 CONTRACT AWARDS

The following contracts were awarded for construction this month:

- Work Order No. 6 for Final Design Services for Surface Water Transmission System Segment C2
- Work Order No. 5 for Construction Phase Services for Surface Water Transmission System South Water Receiving Facilities
- Work Order No. 4 for Construction Phase Services by Fiber Optics Consultant during construction of GRP Surface Water Transmission System
- Expenditures for SCADA HMI software, computer hardware, network switches and firewalls, and incidentals needed for SCADA development in order to program the Control System for the Surface Water Treatment Plant and Water Receiving Facilities

3.3 PROCESS AND PROCEDURES

The GRP Program continues to utilize traditional procurement methods for consultant services and alternative project delivery methods in the procurement of contractor services.

3.4 LOOK AHEAD

The following list provides a very general look ahead at known and anticipated GRP Program professional services and construction contractor soli-

tations, contract awards, contract/work order amendments, and assorted agreements such as utility relocations and easement encroachments. Solicitations may be combined, modified, or canceled, or time frames may be modified as deemed necessary.

- Construction Contract for Surface Water Transmission Line Segment W2B
- Work Order No. 7 for Construction Phase Services by Design Consultant during construction of Surface Water Transmission Line Segment W2B
- Work Order No. 6 for Final Design Services of the Surface Water Transmission System Segments W3A and W3B
- Work Order No. 5 for Design of Permanent Access Road for the Surface Water Facilities
- Work Order No. 7 for Traffic Signalization Phasing
- Construction Contract for Surface Water Transmission System South Water Receiving Facilities
- Work Order No. 8 for Design of Conduit and Ground Boxes
- Construction Contract for Surface Water Transmission Line Segment C4
- Construction Phase Services during the Construction of Surface Water Transmission Line Segment C4



4.0 COST REPORT AND FINANCIAL CONSIDERATIONS

4.1 GRP PROGRAM AND GRP PROJECT CIP BUDGET(S)

Through this month, the GRP Program remains under its \$500,000,000 Capital Improvement Project (CIP) Program planning budget, and forecasts continue to indicate it will be completed under budget (see also subsection 4.6 and **Exhibit 2**). A summary of the GRP Program's CIP budget and cost considerations as reported to the GRP Review Committee and the SJRA Board of Directors is provided as attached **Exhibit 2**.

A summary of the SJRA GRP Division's Fiscal Year 2013 (FY13) operating budget (revenue and expenditures) is provided as **Exhibit 8**. The budget includes all normal and customary expenses for operating a utility-based, non-profit business, including debt service, and is developed annually for approval by the SJRA Board of Directors.

The GRP Program is currently operating under the SJRA Board of Director's authorized CIP budget of \$512,400,358.49 (net - \$446,812,553.05; see also **Exhibit 4**). The funding available in the CIP budget allows the SJRA to secure all of the resources required to perform professional services, construction services, and procure long lead time equipment during the design phase of the GRP Program.

4.2 FINANCIAL REPORTS

Exhibit 5 illustrates the funding sources presently applied towards the GRP Program CIP budget which include the following:

- 1.) Texas Water Development Board's (TWDB) Water Infrastructure Fund (WIF);
- 2.) The sale of open market Special Project Revenue Bonds, Series 2011;
- 3.) TWDB Dfunds, Series 2011A;
- 4.) TWDB Dfunds, Series 2012; and
- 5.) TWDB Dfunds, Series 2012A

Approved funding to-date represents approximately 89.4% of the planned \$500,000,000.00 Program budget. Contracted commitments are summarized in Table 4.1. The GRP Program's funding and forecasted expenditures are further detailed in attached **Exhibits 2, 3 and 4**.

Please note that financial reports do not include investment income.

4.3 INVOICES/APPLICATIONS FOR PAYMENT

GRP Program Consultant Invoices and/or Construction Contractor Applications for Payment paid through the end of the report month are represented in Table 4.1 (Item F).

	Previous (Thru 5/31/13)	June 2013 Activity	To Date (Thru 6/30/13)
A. Approved Funding	512,400,358.49	0.00	512,400,358.49
B. Available Funding After Costs	446,812,553.05	0.00	446,812,553.05
C. Approved Contracts	361,258,666.47	892,218.24	362,150,884.71
D. Project Close Out	(812,453.92)	0.00	(812,453.92)
E. Uncontracted Funding	86,366,340.50	(892,218.24)	85,474,122.26
F. Invoices Paid	93,173,725.79	6,912,865.19	100,086,590.98
G. Remaining Funds	353,638,827.26	(6,912,865.19)	346,725,962.07



4.0 COST REPORT AND FINANCIAL CONSIDERATIONS (CONTINUED)

4.4 CONTRACT AMENDMENTS AND CHANGE ORDERS

Each of the GRP Program agreements, work orders, and amendments listed in Section 3.2 were presented at the GRP Review Committee and the SJRA Board of Directors meeting this month. Each item was authorized by the SJRA Board of Directors for execution by the SJRA General Manager.

4.5 CLAIMS

No claims were identified this month.

4.6 CIP CASH FLOW

The GRP Program CIP cash flow through calendar year 2015 reflects known expenditures through this month as seen in Table 4.1. Estimates for future expenditures are included in [Exhibit 2](#). All active and currently identified future GRP Program projects and initiatives are included in the cash flow. A graph of forecasted monthly expenditures from the referenced cash flow is attached as [Exhibit 3](#).



Electrical Conduit

4.7 CIP BUDGET ESTIMATES AT COMPLETION

4.7.1 GRP Program

The **total gross funds** (including capitalized interest) required to execute Phase I of the GRP Program are currently estimated at \$562,960,358.49. Additionally, all current GRP Program contracts, including their respective SJRA Board of Director's approved budgeted amounts are listed in [Exhibit 6](#).

4.7.2 GRP Projects

The GRP Program projects remained within their approved contract budgets this month. [Exhibit 6](#) indicates each active GRP Program project and GRP Program contract.

4.8 LAND ACQUISITION

The GRP Program Team, with the support of its assorted land acquisition consultants, continued to make steady progress in acquiring the land and easements necessary for the surface water transmission system. The preparation of metes & bounds descriptions for easements along the transmission line routes continued and are nearing completion. Nineteen (19) easements were acquired this month, bringing the total number of easements acquired to two hundred and five (205). The chart below establishes the number of easements acquired in the month of June, by Line Segment. Negotiations to acquire other easements throughout the system are at varying stages of completion. A cumulative summary of easement acquisition activity is provided in [Exhibit 7](#).

SEGMENT	ACQUIRED IN JUNE
T3	3
W3	5
C2	8
C3	1
C4	2

5.0 QUALITY ASSURANCE

5.1 FINAL DESIGN

As final design nears completion and milestone submittals are received, the GRP Program Team will review and provide comments as applicable to each submittal. The review will be based on submittal compliance with the GRP Program's Design Standards and Criteria Manual, completeness per Program Management Plan (PMP) Section 14.0 – Quality Management and Section 21.0 – Design Management, and general project understanding.

5.2 PRE-CONSTRUCTION

The CM&I Team conducted a pre-proposal conference for Segment C1A. They assisted in the development of addendums, answered questions and participated in negotiations with the contractors. The team also conducted a pre-construction conference and issued NTP for Segments W2B and T3.

5.3 CONSTRUCTION

Quality assurance efforts by the SJRA Construction Inspectors as well as the SWF CA&I consultant continued this month with the continuation of SWF construction, primarily for the RWPS, HSPS and GSTs. There continue to be areas of construction underway for chemical containment and storage and dewatering facilities. Efforts included regular visits to the project site to monitor and document observed progress and confirm compliance with the construction contract. Similar quality assurance efforts by the SJRA Construction Inspectors and CM&I consultant for the SWRF and surface water transmission system have commenced with the beginning of construction on Segments T1, T2, W1A and W1B.



Rebar used in the construction of the High Service Pump Station

6.0 EXHIBITS

Exhibit 1 - GRP Program Schedule

Exhibit 2 - GRP Program Estimate-At-Completion

Exhibit 3 - GRP Program Monthly Forecasted Expenditures

Exhibit 4 - GRP Program Fund Data

Exhibit 5 - Monthly GRP Program Financing Report

Exhibit 6 - GRP Program Current Authorizations

Exhibit 7 - Land Acquisition Summary

Exhibit 8 - GRP Schedule of Revenues & Expenses—Actual & Budget

Exhibit 9 - GRP Program Monthly Meeting Log

Exhibit 10 - Surface Water Facilities (SWF) Construction Photos

Exhibit 11 - Transmission Line Construction Photos



Exhibit 1 - GRP Program Schedule

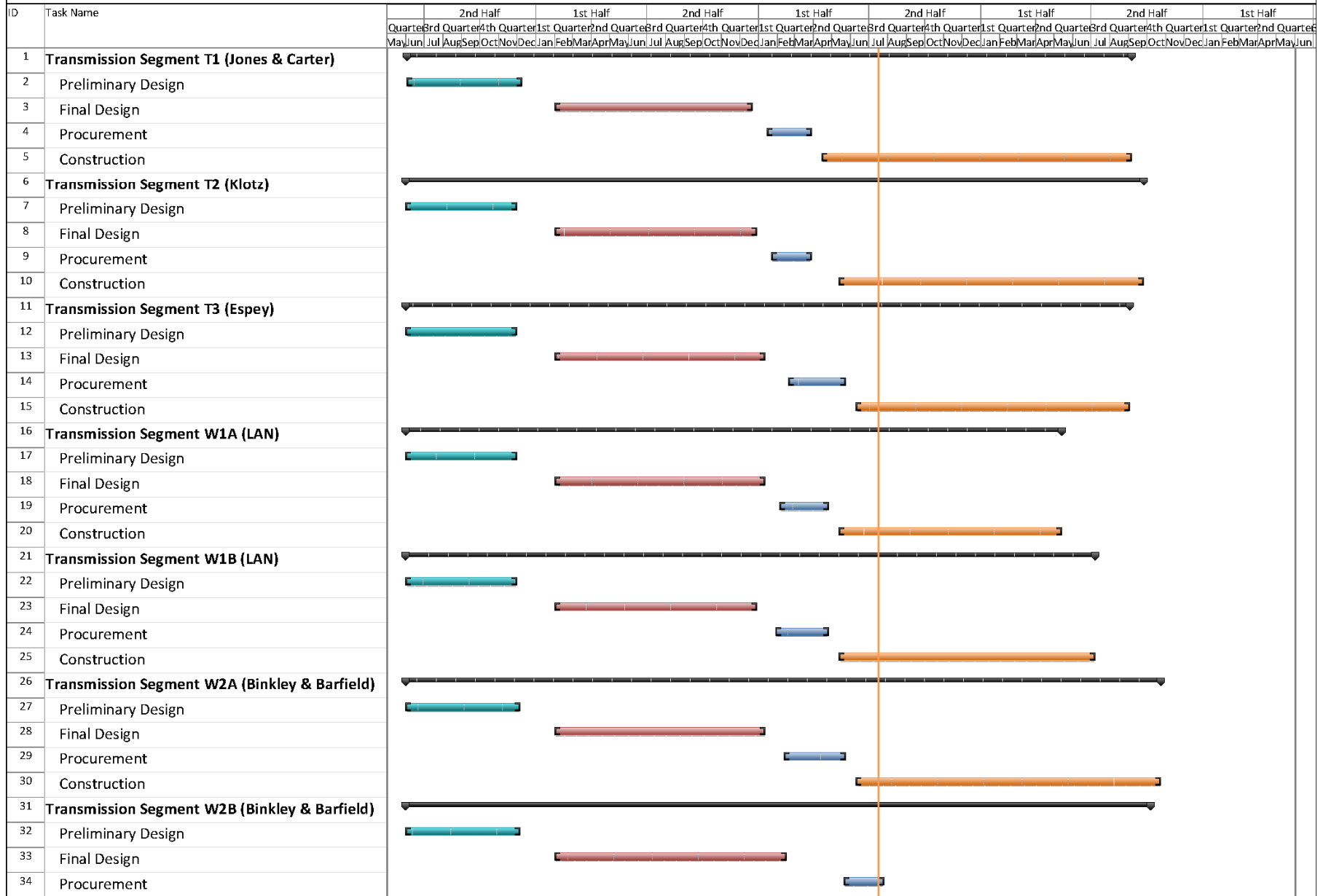


Exhibit 1 - GRP Program Schedule

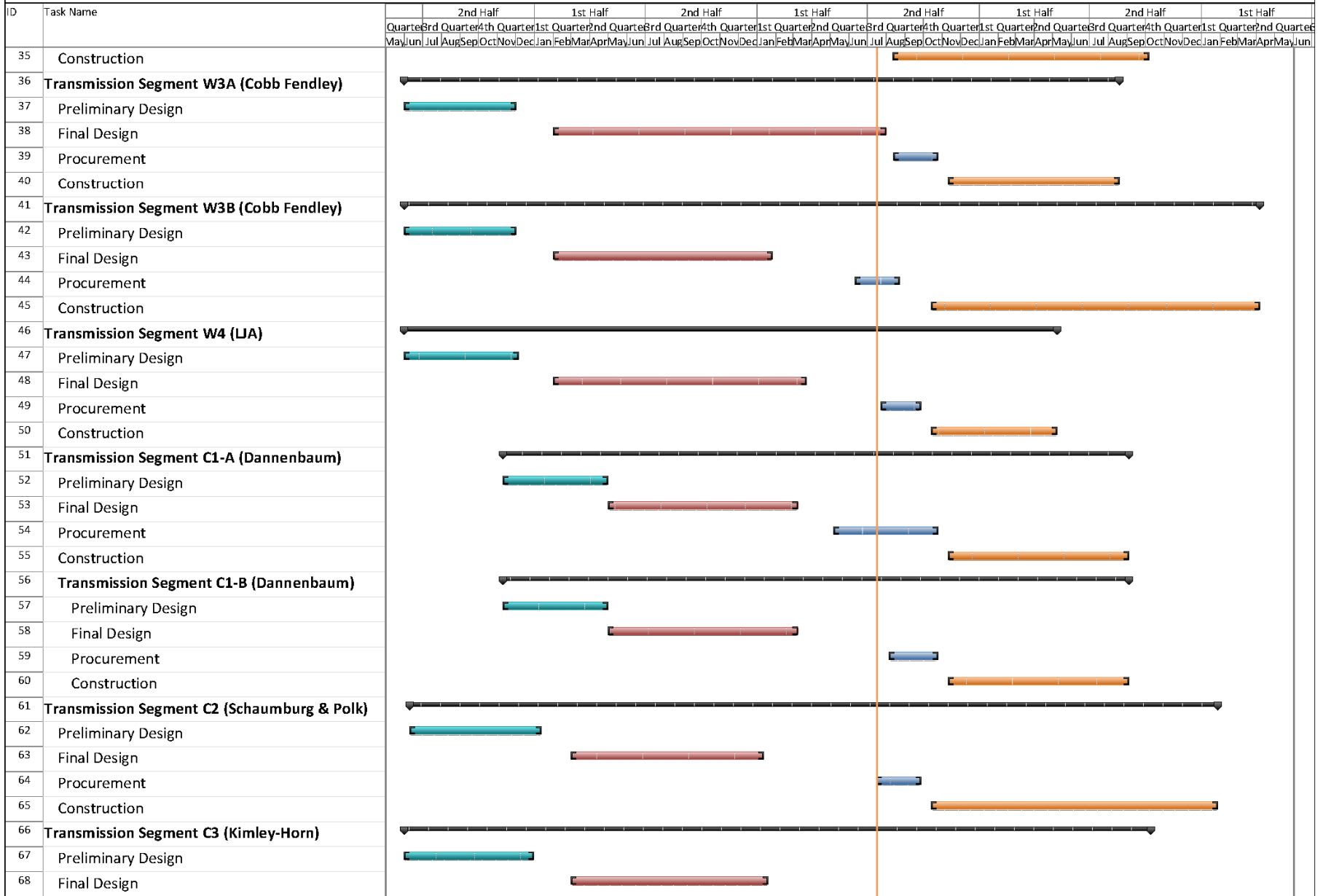


Exhibit 1 - GRP Program Schedule

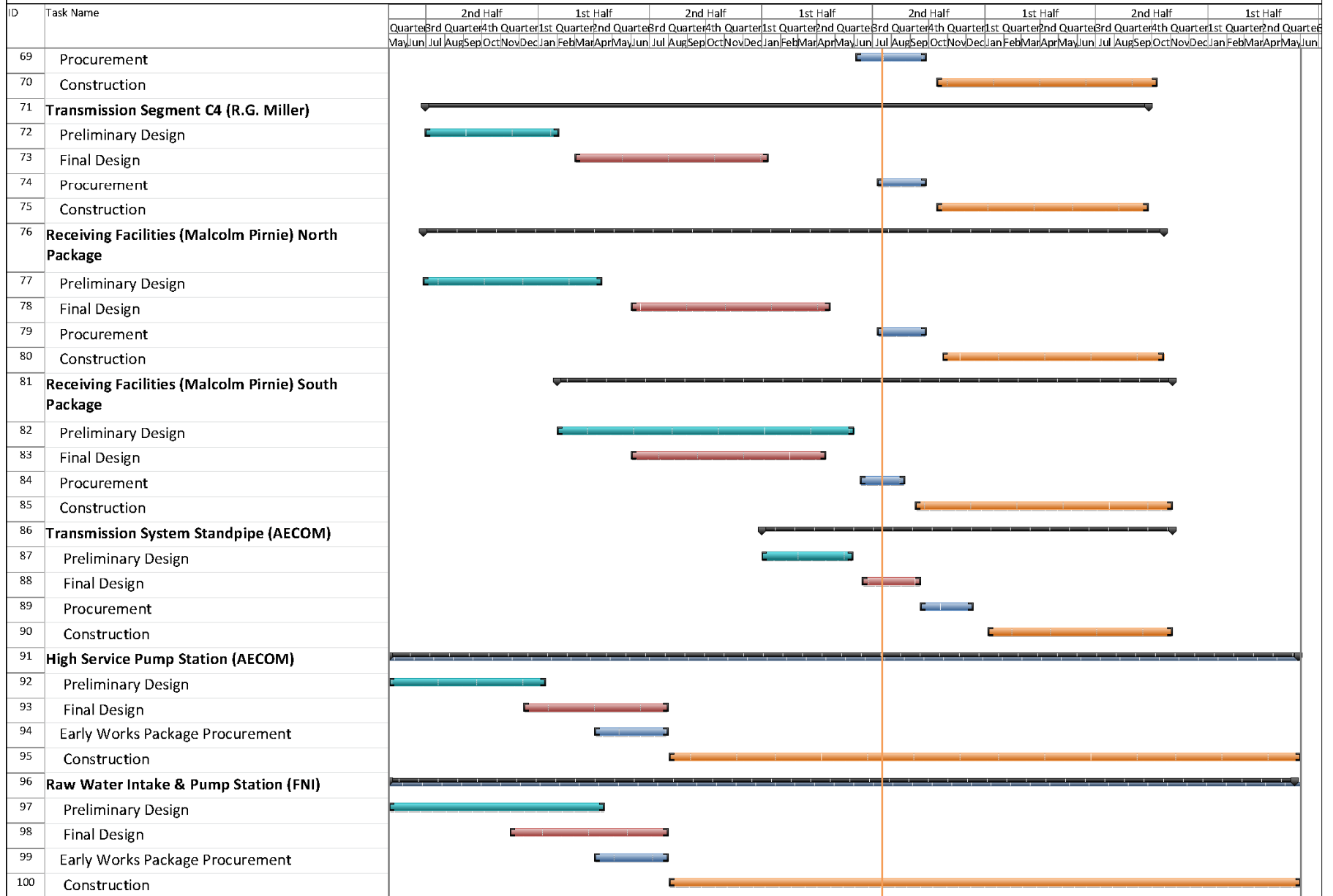


Exhibit 2

GRP Program Estimate-At-Completion As of June 30, 2013

SERVICES	ESTIMATE-AT-COMPLETION
Pre-Engineering Phase Services	\$ 4,692,437
(GRP Development, Environmental Studies, Pilot Plant, Surface Water Treatment Plant Site Survey)	
Engineering Phase Services	\$ 42,793,201
(Planning, Preliminary Engineering, Final Engineering, Geotechnical, Survey, Metes & Bounds, Subsurface Utility Investigation, Environmental)	
Construction Phase Services	\$ 27,652,618
(Engineering Services During Construction, Construction Management & Inspection [Transmission System], Construction Administration & Inspection [SWF], Material Testing)	
Construction	\$ 390,932,457
(Surface Water Transmission System, Raw Water Intake and Pump Station, Surface Water Treatment Plant, High Service Pump Station and Ground Storage Tanks, Surfacewater Receiving Facilities, Infrastructure, Buildings, Roadways, Site Security, Access Roadways)	
Transmission Segment C1 - Construction	\$ 7,065,693
Transmission Segment C2 - Construction	\$ 11,988,094
Transmission Segment C3 - Construction	\$ 7,920,000
Transmission Segment C4 - Construction	\$ 3,958,419
Transmission Segment T1 - Construction	\$ 15,248,034
Transmission Segment T2 - Construction	\$ 14,053,125
Transmission Segment T3 - Construction	\$ 10,801,955
Transmission Segment W1 - Construction	\$ 16,207,322
Transmission Segment W2 - Construction	\$ 33,022,632
Transmission Segment W3 - Construction	\$ 18,433,864
Transmission Segment W4 - Construction	\$ 6,670,718
Receiving Facilities - Construction	\$ 15,441,175
Surface Water Facilities CMAR (GMP)	\$ 190,704,740
Transmission System Fiber Optic - Construction	\$ 4,531,008
Permanent Access Roadway Construction	\$ 8,000,000
Building No. 1; Access Road; Vegetative Buffer; Construction Materials Testing; SWF Site Vegetation Management; Sanitary Sewer/Access Rd. Relocation	\$ 4,326,704
Other Offsite Construction (Stand Pipe, Transmission Line Utility Relocations, Receiving Facility Improvements)	\$ 20,721,528
Non-Project Specific Contingency	\$ 1,837,447
Program Management	\$ 12,172,293
(GRP Program Management, Survey, Geotechnical, Transient, Corrosion, Legal Consultants)	
Land Acquisition	\$ 12,178,302
(Legal, Appraisal, Title Research, Land Acquisition Consultants) ⁽¹⁾	
Total⁽²⁾:	\$ 490,421,308

⁽¹⁾ Includes revisions to land acquisition cost estimates and recategorizing of contingency.

⁽²⁾ Bond issuance costs are not included.



Exhibit 3

GRP Program Monthly Forecasted Expenditures As of June 30, 2013

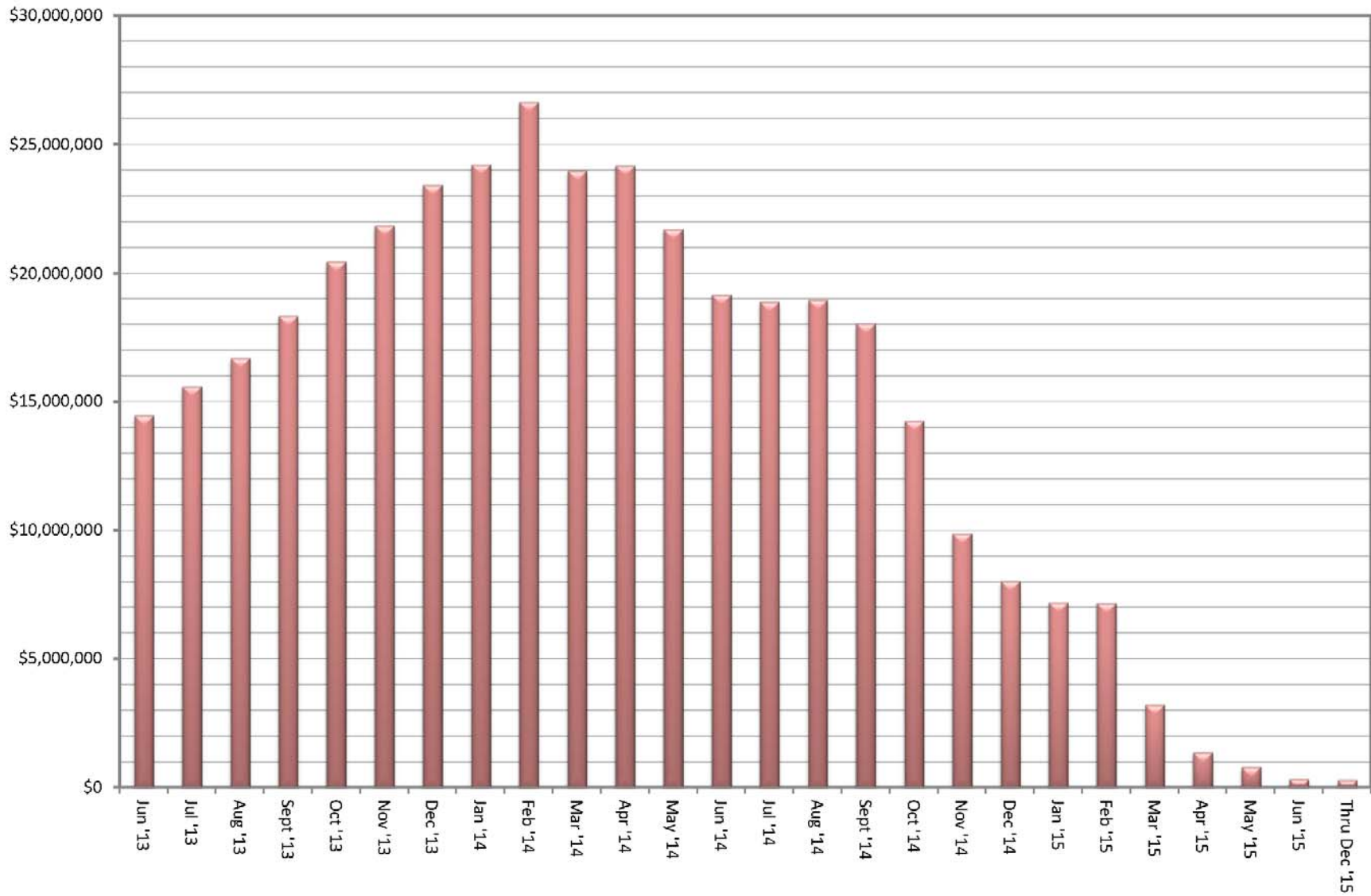


Exhibit 4

GRP Program Fund Data As of June 30, 2013

Funding Source	Amount Authorized by Board To-Date	Interest Rate	Bond Costs	Capitalized Interest	Debt Service Reserve Fund	Net Amount Currently Available	Pending Funding Source
TWDB WIF Bond Issue	\$ 21,500,000.00	.854% - 2.706%	\$ 470,337.08	\$ -	\$ -	\$ 21,029,662.92	
Open Market Bond Issue (Series 2011)	\$ 83,430,358.49	3% - 5.25%	\$ 2,049,764.39	\$ 7,858,241.52	\$ -	\$ 73,522,352.58	
TWDB Dfund Series 2011A	\$ 67,470,000.00	1.22% - 4.97%	\$ 751,195.33	\$ 5,166,233.00	\$ 3,859,151.00	\$ 57,693,420.67	
TWDB Dfund Series 2012	\$ 175,000,000.00	1.17% - 4.62%	\$ 971,769.13	\$ 12,869,175.00	\$ -	\$ 161,159,055.87	
TWDB Dfund Series 2012A	\$ 165,000,000.00	1.26% - 4.62%	\$ 952,269.99	\$ 14,139,669.00	\$ 16,500,000.00	\$ 133,408,061.01	
Subtotal Approved Amounts	\$ 512,400,358.49		\$ 5,195,335.92	\$ 40,033,318.52	\$ 20,359,151.00	\$ 446,812,553.05	\$ -
Future Series 2013 (Est.)	\$ 39,850,000.00	4.01%	\$ 628,750.00	\$ 2,837,087.00	\$ 2,275,747.00	\$ -	\$ 34,108,416.00
Future Series 2014 (Est.)	\$ 10,710,000.00	4.06%	\$ 293,700.00	\$ 787,388.00	\$ 128,573.00	\$ -	\$ 9,500,339.00
Subtotal Future Amounts	\$ 50,560,000.00		\$ 922,450.00	\$ 3,624,475.00	\$ 2,404,320.00	\$ -	\$ 43,608,755.00
Totals	\$ 562,960,358.49		\$ 6,117,785.92	\$ 43,657,793.52	\$ 22,763,471.00	\$ 446,812,553.05	\$ 43,608,755.00

Notes:

1. These value do not include investment income.
2. Green items are estimates only.
3. Series 2011 bond costs include \$681,132.45 for bond insurance and \$459,709.50 for underwriter's discount.



Exhibit 5

Monthly GRP Program Financing Report

Fiscal Year 2013

Through June 30, 2013

	TWDB WIF Bond Issue	Open Market Bond Issue (Series 2011)	TWDB Dfund (Series 2011A)	TWDB Dfund (Series 2012)	TWDB Dfund (Series 2012A)	Totals
A. Program Budget						
Bond Issue Amount	\$ 21,500,000.00	\$ 83,430,358.49	\$ 67,470,000.00	\$ 175,000,000.00	\$ 165,000,000.00	\$ 512,400,358.49
Total Investment	\$ 21,500,000.00	\$ 83,430,358.49	\$ 67,470,000.00	\$ 175,000,000.00	\$ 165,000,000.00	\$ 512,400,358.49
B. Contracted Costs						
Contracts Completed	\$ 17,113,312.84	\$ 17,692,022.96	\$ 2,583,730.80	\$ -	\$ -	\$ 37,389,066.60
Current Contract Values	\$ 3,897,829.00	\$ 33,787,294.44	\$ 33,738,023.75	\$ 161,159,055.87	\$ 90,876,123.49	\$ 323,458,326.55
Change Orders	\$ -	\$ 1,130,486.17	\$ 173,005.39	\$ -	\$ -	\$ 1,303,491.56
Project Close Out	\$ (326,370.13)	\$ (486,083.79)	\$ -	\$ -	\$ -	\$ (812,453.92)
Total	\$ 20,684,771.71	\$ 52,123,719.78	\$ 36,494,759.94	\$ 161,159,055.87	\$ 90,876,123.49	\$ 361,338,430.79
C. Expenditures						
Paid Previous Fiscal Years	\$ 19,937,479.81	\$ 21,326,145.92	\$ 242,086.86	\$ -	\$ -	\$ 41,505,712.59
Paid Current Fiscal Year	\$ 473,565.49	\$ 19,634,193.99	\$ 11,542,862.80	\$ 26,907,821.86	\$ 22,434.25	\$ 58,580,878.39
Issuance Costs	\$ 470,337.08	\$ 2,049,764.39	\$ 751,195.33	\$ 971,769.13	\$ 952,269.99	\$ 5,195,335.92
Debt Service Reserve Fund	\$ -	\$ -	\$ 3,859,151.00	\$ -	\$ 16,500,000.00	\$ 20,359,151.00
Capitalized Interest	\$ -	\$ 7,858,241.52	\$ 5,166,233.00	\$ 12,869,175.00	\$ 14,139,669.00	\$ 40,033,318.52
Total	\$ 20,881,382.38	\$ 50,868,345.82	\$ 21,561,528.99	\$ 40,748,765.99	\$ 31,614,373.24	\$ 165,674,396.42
D. Remaining						
Uncontracted Funds	\$ 344,891.21	\$ 21,398,632.80	\$ 21,198,660.73	\$ (0.00)	\$ 42,531,937.52	\$ 85,474,122.26
Fund Balance *	\$ 618,617.62	\$ 32,562,012.67	\$ 45,908,471.01	\$ 134,251,234.01	\$ 133,385,626.76	\$ 346,725,962.07

*Excluding net investment income



Exhibit 6

GRP Program Current Authorizations As of June 30, 2013

Surface Water Transmission System - Consultant Services

Project	Firm	Amount Authorized by Board
T1	Jones & Carter	\$ 2,202,879.75
T2	Klotz Associates	\$ 1,878,727.49
T3	Espey	\$ 1,892,322.47
W1	LAN	\$ 2,729,523.15
W2	Binkley & Barfield	\$ 2,575,467.19
W3	Cobb Fendley	\$ 3,221,006.86
W4	LJA	\$ 925,698.17
C1	Dannenbaum	\$ 815,523.94
C2	Schaumburg & Polk	\$ 1,236,623.21
C3	Kimley Horn	\$ 807,780.10
C4	RG Miller	\$ 309,230.05
WRFs	Malcom Pirnie/Arcadis	\$ 2,304,173.97
CM&I	Kellog Brown & Root	\$ 8,124,254.62
Subtotal - Surface Water Transmission System		\$ 29,023,210.97

Surface Water Facilities - Consultant Services

Project	Firm	Amount Authorized by Board
WTP	HDR Engineering	\$ 18,364,374.92
HSPS	AECOM	\$ 4,826,638.28
StandPipe	AECOM	\$ 192,281.00
RWI&PS	Freese & Nichols	\$ 3,954,773.35
CA&I	CDMSmith	\$ 5,348,633.00
Subtotal - Surface Water Facilities		\$ 32,686,700.55

Program Consultant Services & Other Projects

Project	Firm	Amount Authorized by Board
Program Management	Brown & Gay	\$ 10,695,245.06
Program Survey	Landtech	\$ 514,524.00
Program Geotechnical	Raba Kistner	\$ 145,260.00
Prog Transient Analyses	AECOM	\$ 311,400.00
Access Rd/Misc Service	ACES	\$ 520,610.60
SWF Surveying	S&V Surveying	\$ 66,875.00
Land Acq	KDM	\$ 401,592.70
Land Acq	PAS	\$ 1,413,334.88
Program Environmental	Half Associates	\$ 1,063,698.87
Program Fiber Optics	EMA	\$ 736,357.00
Program Corrosion	V&A Consulting Engineers	\$ 866,676.00
Program Services & Projects	Multiple	\$ 4,955,025.44
Subtotal - Program Consultant Services & Other Projects		\$ 21,690,599.55

Exhibit 6 (con't)

GRP Program Current Authorizations As of June 30, 2013

Active or Completed Construction Contracts

Project	Firm	Amount Authorized by Board
GRP Bldg No. 1	Brookstone	\$ 2,008,673.00
Bldg No. 1/Aqua Tx CMT	Aviles Engineering	\$ 64,343.15
Landscape Buffer	Key-Scape Landscape	\$ 53,090.00
Temp Access Road	Lindsey Construction	\$ 977,583.60
Access Road CMT	Terracon Consultants	\$ 10,359.70
Access Road Overlay and Detention	AAA Asphalt	\$ 412,284.59
Access Road Landscape	TreeScapes	\$ 34,165.00
Aqua Texas Sewer	Randy Roan Construction	\$ 535,181.17
Bldg No. 1 Fiber Line	Preferred Technologies	\$ 231,157.56
Surface Water Plant (CMAR)	McCarthy	\$ 190,704,740.00
SWF CMT	Geotest	\$ 1,976,659.00
Transmission Sytem Utility Relocations	Various	\$ 1,992,417.46
Transmission System CMT (T3, W1, W2, W3, W4)	Aviles	\$ 1,601,330.00
Transmission System CMT (T1, T2, C1, C2, C3, C4)	Terracon	\$ 1,006,711.25
Transmission Segment T1	S.J. Louis Construction of Texas Ltd	\$ 14,521,937.14
Transmission Segment T2	Texas Sterling Construction Company	\$ 13,383,928.25
Transmission Segment T3	S.J. Louis Construction of Texas Ltd	\$ 10,287,576.00
Transmission Segment W1A	Huff & Mitchell, Inc.	\$ 8,222,000.50
Transmission Segment W1B	Texas Sterling Construction Company	\$ 7,213,544.50
Transmission Segment W2A	Texas Sterling Construction Company	\$ 15,288,526.00
Miscellaneous	Other Construction Contracts, Permits, Fees, etc.	\$ 545,386.30
Subtotal - Construction Contracts		\$ 271,071,594.17

Totals

	Amount Authorized by Board
Surface Water Transmission System - Consultant Services	\$ 29,023,210.97
Surface Water Facilities - Consultant Services	\$ 32,686,700.55
Program Consultant Services & Other Projects	\$ 21,690,599.55
Active or Completed Construction Contracts	\$ 271,071,594.17
Total	\$ 354,472,105.24



Exhibit 7

GRP Program Land Acquisition Summary As of June 2013

Project	Anticipated Number of Easements to Acquire	Easements Acquired This Month	Total Easements Filed and Acquired
Transmission System Segment T1	62	0	57
Transmission System Segment T2	0	0	0
Transmission System Segment T3	22	3	8
Transmission System Segment C1	16	0	10
Transmission System Segment C2	77	8	26
Transmission System Segment C3	32	1	17
Transmission System Segment C4	4	2	2
Transmission System Segment W1	32	0	17
Transmission System Segment W2	8	0	0
Transmission System Segment W3	178	5	77
Transmission System Segment W4	7	0	1
Totals:	438	19	215



Exhibit 8

San Jacinto River Authority

Groundwater Reduction Plan Schedule of Revenues & Expenses - Actual & Budget For the Ten Months Ending June 30, 2013

	June	Fiscal Year To Date				Fiscal Budget	
	Actual	Actual	Budget	Variance	% Variance	Total Year Budget	Actual YTD % of Tot Yr. Budget
OPERATING REVENUES							
Water sales							
GRP pumping fees	\$ 2,487,948	\$ 17,907,355	\$ 17,055,513	\$ 851,842	5%	\$ 21,997,181	81%
TOTAL OPERATING REVENUES	\$ 2,487,948	\$ 17,907,355	\$ 17,055,513	\$ 851,842	5%	\$ 21,997,181	81%
OPERATING EXPENSES							
Payroll & employee benefit expenses	\$ 219,806	\$ 2,220,713	\$ 3,370,125	\$ 1,149,412	34%	\$ 4,044,146	55%
Professional fees	14,347	160,635	310,670	150,035	48%	344,000	47%
Purchased & contracted services	10,609	92,088	197,292	105,204	53%	236,750	39%
Supplies, materials & utilities	19,672	2,161,249	2,486,797	325,548	13%	2,533,168	85%
Maintenance repairs, parts & rentals	223	9,882	12,800	2,918	23%	15,360	64%
General & administration	154,882	721,981	936,933	214,951	23%	1,124,319	64%
TOTAL OPERATING EXPENSES	\$ 419,539	\$ 5,366,548	\$ 7,314,617	\$ 1,948,069	27%	\$ 8,297,743	65%
NON-OPERATING REVENUES & EXPENSES							
Interest on investments	\$ (46,773)	\$ 801,401	\$ 1,975,540	\$ (1,174,139)	(59%)	\$ 2,369,785	34%
Other revenues	-	1,430	-	1,430	100%	-	100%
Depreciation	(21,900)	(209,749)	-	(209,749)	100%	-	100%
Interest expense	(1,661,355)	(14,422,046)	(14,138,316)	(283,730)	2%	(17,540,882)	82%
Amortized debt issuance expense	(14,142)	(141,421)	-	(141,421)	100%	-	100%
TOTAL NON-OPERATING	\$ (1,744,171)	\$ (13,970,385)	\$ (12,162,776)	\$ (1,807,609)	15%	\$ (15,171,097)	92%
NET INCOME (LOSS)	\$ 324,239	\$ (1,429,578)	\$ (2,421,880)	\$ 992,301	(41%)	\$ (1,471,659)	97%



Exhibit 8 (con't)

GRP Division

Clarification of Actual & Budget Variances

(in thousands)

Category	Driver	June 2013	FYTD 2013
GRP Pumping Fees	Usage variance due to weather conditions.	269	852
Payroll and related expenses	Budgeted positions not filled per schedule.	117	1,149
Professional Fees	Professional fees less than budgeted.	2	150
Purchased & Contracted Services	Purchased and contracted services less than budgeted.	9	105
Supplies, Materials, Utilities, Maintenance, Repairs, Parts & Rentals	Additional Water Supply, costs not yet realized.	-	300
	Reservation Fees 2012 true-up	-	33
	Travel, fuel, office supplies, phones, utilities, recruiting and misc. expenses more than budgeted.	5	(4)
General & Administration	Allocated labor and related expenses less than budgeted, anticipated a quicker rate of growth than has been actualized.	(61)	215
Non-Operating	Interest/Investment Income	(245)	(1,173)
	Depreciation expense	(22)	(210)
	Bond Issuance Cost Amort expense	(14)	(141)
	Bond interest expense	40	(284)
		100	992



Exhibit 9

GRP Program Monthly Meeting Log for June 2013

Meeting	Subject of Meeting	Location	Date	Participants
Pre-Proposal Meeting for Segment W2B	RFP 13-033	G&A Building	6/6/2013	SJRA Staff, GRP Program Team and Consultant Team
W2A Pre-Construction Meeting	Information Regarding Construction of W2A	GRP Building 1	6/10/2013	SJRA Staff, GRP Program Team and Consultant Team
GRP Informative Sessions for SJRA Employees	GRP History and Future	G&A Building/Woodlands Conference Room	6/11-12/2013	SJRA Staff, GRP Team and Public Relations Team
T3 Pre-Construction Conference	Information Regarding Construction of T3	GRP Building 1	6/17/2013	SJRA Staff, GRP Program Team and Consultant Team
Grogan's Mill Traffic Maintenance and Operational Plan	Signalization at Grogan's Mill	Montgomery County Engineering Offices	6/17/2013	GRP Program Team and Montgomery County Engineering Department
Tree Preservation and Bore Pit Location	Location in Relation to FM 2978	The Woodlands Development Company, L.P.	6/20/2013	GRP Program Team and The Woodlands Development Representatives
GRP Review Committee	GRP Items Going Before SJRA Board of Directors	G&A Board Room	6/24/2013	Review Committee, GRP Program Team, General Public
Discussion Regarding Waterlines in Conroe	Waterlines in Conroe	G&A Building	6/24/2013	GRP Team and Representatives from the City of Conroe
Pre-Proposal Meeting for South Receiving Facilities	RFP 13-020	G&A Building	6/25/2013	SJRA Staff, GRP Program Team and Consultant Team
Opening of Proposals, RFP 13-033 Segment W2B	Proposals for Segment W2B	G&A Building	6/25/2013	SJRA Staff, GRP Program Team and Offerors
SJRA Board of Directors Meeting	Agenda Related	G&A Offices	6/27/2013	SJRA Board of Directors, GRP Program Team staff, General Public
Land Acquisition Conference Calls	Land Acquisition	GRP Building 1, Andrews Kurth	Weekly	Andrews Kurth, SJRA



Exhibit 9 (Con't)

GRP Program Monthly Meeting Log for June 2013

Meeting	Subject of Meeting	Location	Date	Participants
W1A and W1B Progress Meetings	W1A and W1B	GRP Building 1	Weekly	SJRA Staff, GRP Program Team and Consultant Team
Segments T1 and T2 Progress Meetings	T1 and T2	GRP Building 1	Weekly	SJRA Staff, GRP Program Team and Consultant Team
W1A and W1B Monthly Construction Meetings	W1A and W1B	GRP Building 1	Monthly	SJRA Staff, GRP Program Team and Consultant Team
Segments T3, W3, W4, C1, C2 and C3 Monthly Progress Meetings	Segments T3, W3, W4, C1, C2 and C3	GRP Building 1	Monthly	SJRA Staff, GRP Program Team and Consultant Team



Surface Water Facilities Construction Photos



EXHIBIT 10 SWF Construction Photos

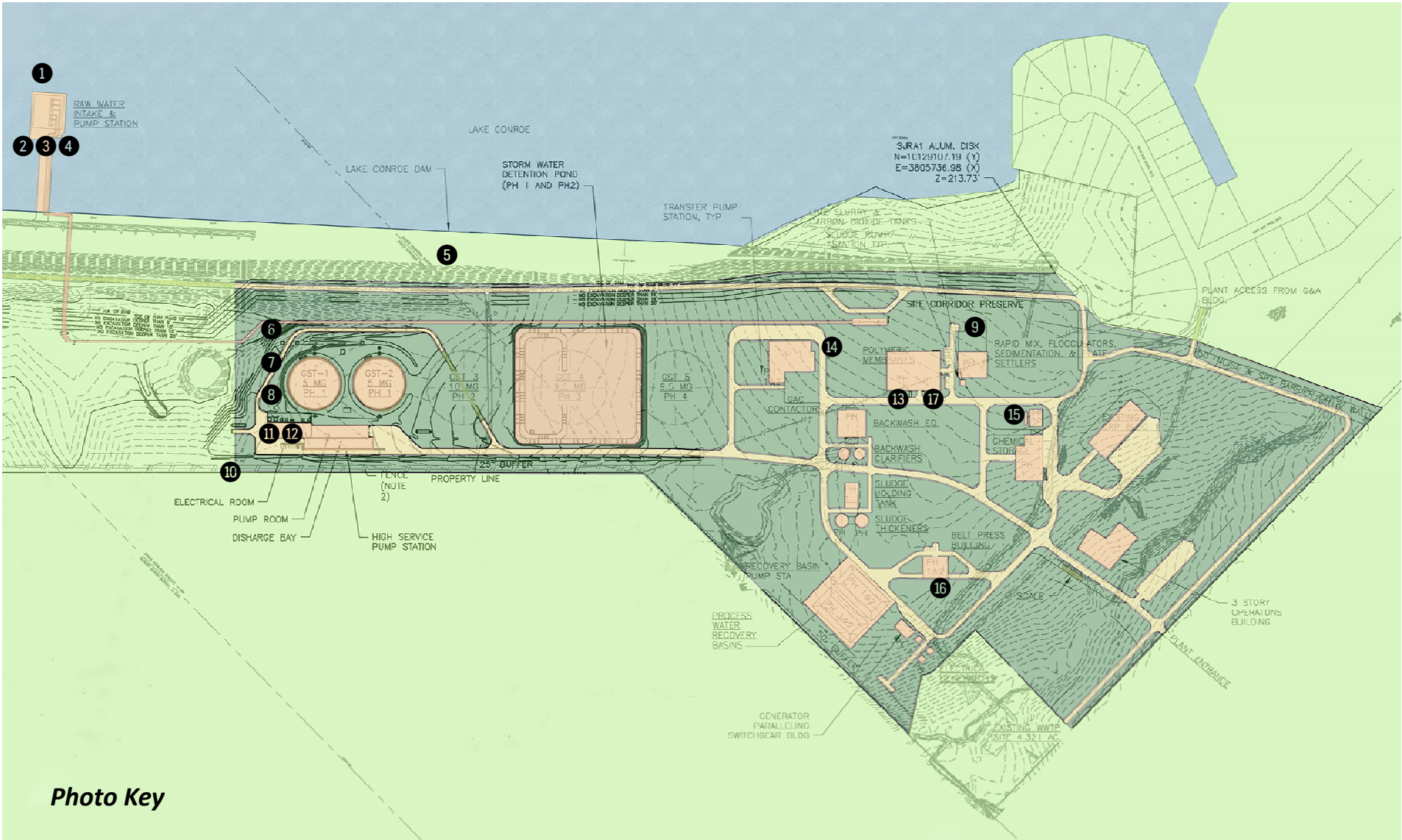


Photo Key



EXHIBIT 10 (con't) SWF Construction Photos



❶ *Raw Water Pump Station at end of Pier*

EXHIBIT 10 (con't) SWF Construction Photos



②③④ Raw Water Pump Station - Pier and Foundation nearing completion

EXHIBIT 10 (con't) SWF Construction Photos



⑤ *Ground Storage Tank Nos. 1 and 2*

EXHIBIT 10 (con't) SWF Construction Photos



6 7 8 *Ground Storage Tank Nos. 1 and 2*

EXHIBIT 10 (con't) SWF Construction Photos



⑨ Pretreatment Facilities

EXHIBIT 10 (con't) SWF Construction Photos



10 Electrical Conduit Installation at High Service Pump Station



11 Progress on High Service Pump Station



12 Progress on High Service Pump Station

EXHIBIT 10 (con't) SWF Construction Photos



13 Membrane Facility



14 Installation of the GAC Wall Begins



15 Electrical Conduit Installation at Chemical Storage Facilities



16 Soil Erosion/Stabilization Control

EXHIBIT 10 (con't) SWF Construction Photos



11 Concrete Placement at the Membrane Facility

Transmission Line Construction Photos Segments T1 and T2



EXHIBIT 11 Transmission Line Construction Photos

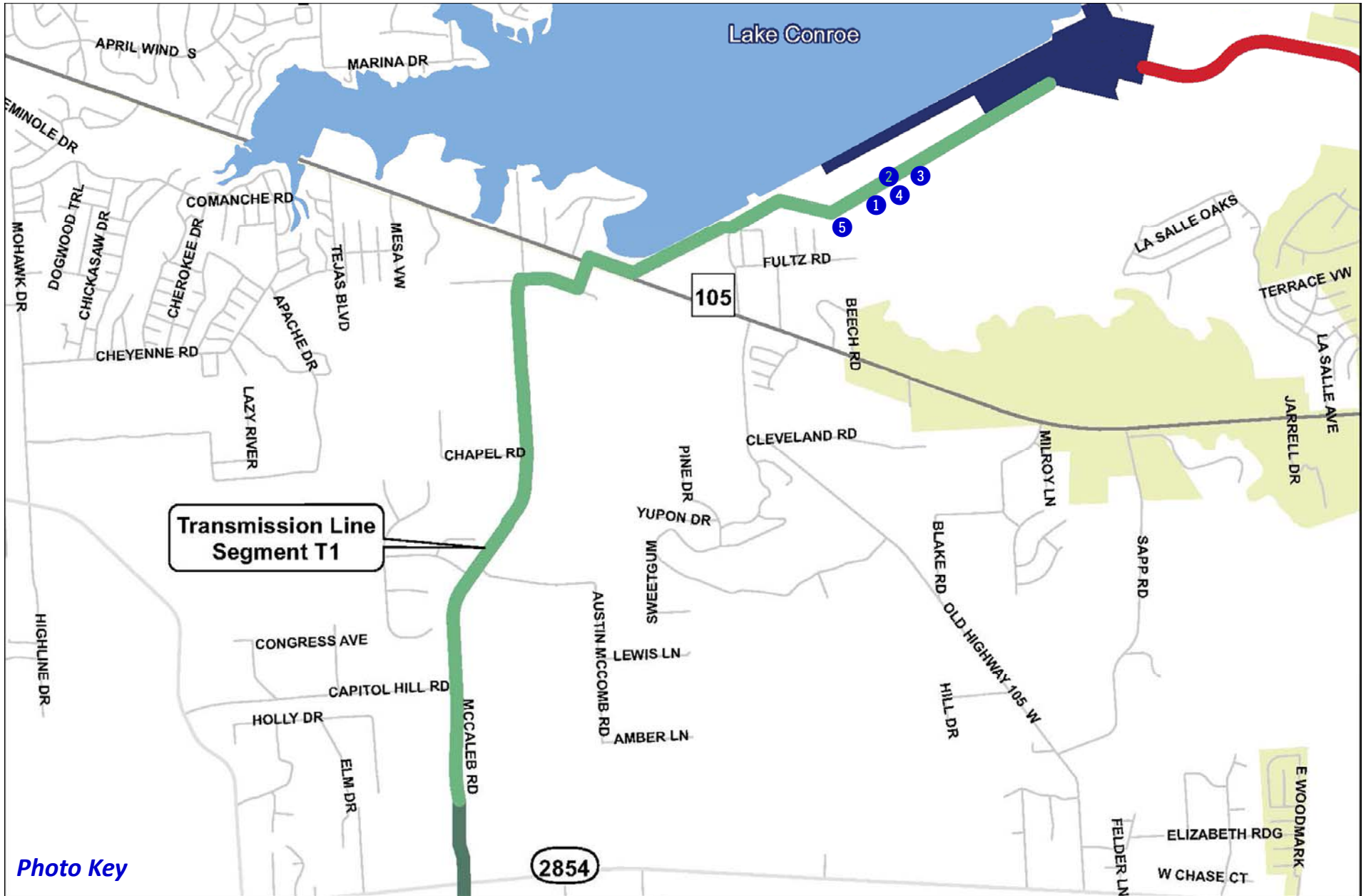


EXHIBIT 11 (con't) Transmission Line Construction Photos



① *Segment T1 60-inch Pipe Installation Under Spillway Channel*

EXHIBIT 11 (con't) Transmission Line Construction Photos



② Segment T1 Tunnel Access East of Spillway Channel



③ Segment T1 60-inch Pipe West of Spillway Channel

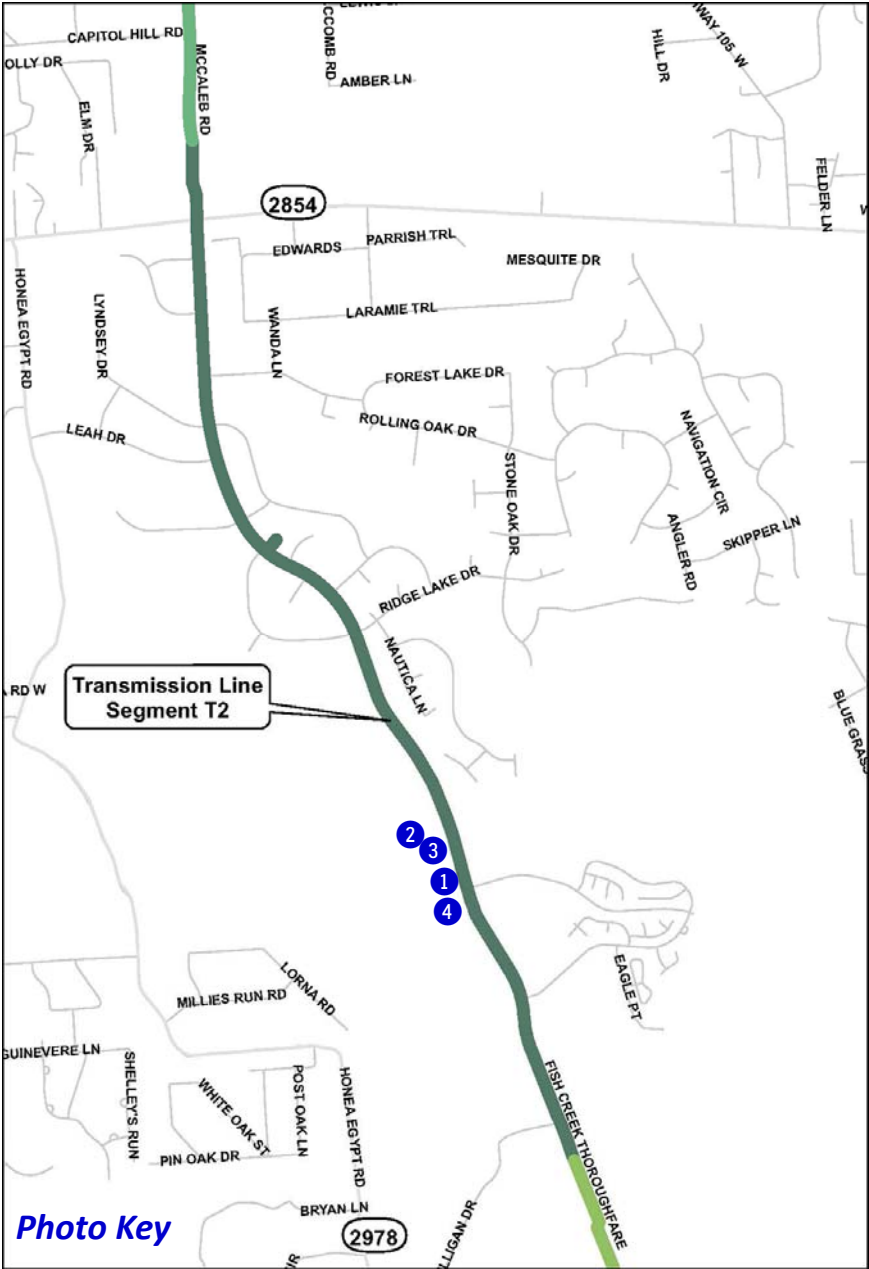


④ Segment T1 60-inch Access For Pipe Welding



⑤ Segment T1 Tunnel West of Spillway Channel

EXHIBIT 11 (con't) Transmission Line Construction Photos



1 Segment T2 Tunnel Pit Installation



EXHIBIT 11 (con't) Transmission Line Construction Photos



② Segment T2 Tunnel Pit Along Fish Creek Thoroughfare



③ Segment T2 Dewatering Pump



④ Segment T2 Tunnel Pit Crew

Transmission Line Construction Photos Segment W1A



EXHIBIT 11 (con't) Transmission Line Construction Photos

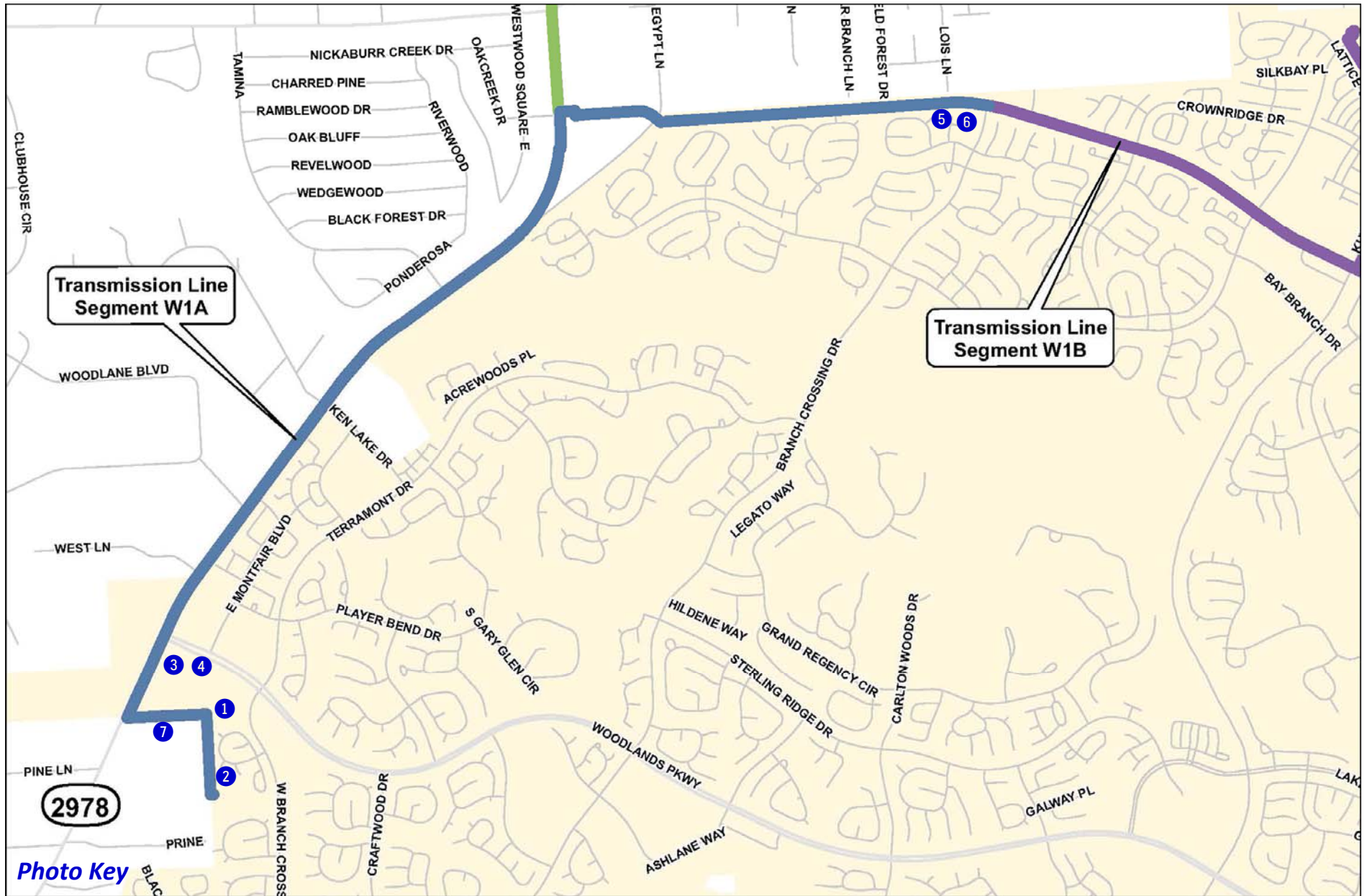


EXHIBIT 11 (con't) Transmission Line Construction Photos



① Segment W1A Tunnel Boring Operation



② Segment W1A Completed Section



③ Segment W1A Fused PVC Pipe along FM 2978



④ Segment W1A PVC Pipe Joint Fusion

EXHIBIT 11 (con't) Transmission Line Construction Photos



5 Segment W1A Staking and Tree Protection near Research Forest



6 Segment W1A Clearing near Research Forest at Branch Crossing



7 Segment W1A Fused PVC Pipe Ready for Installation

Transmission Line Construction Photos Segment W1B



EXHIBIT 11 (con't) Transmission Line Construction Photos

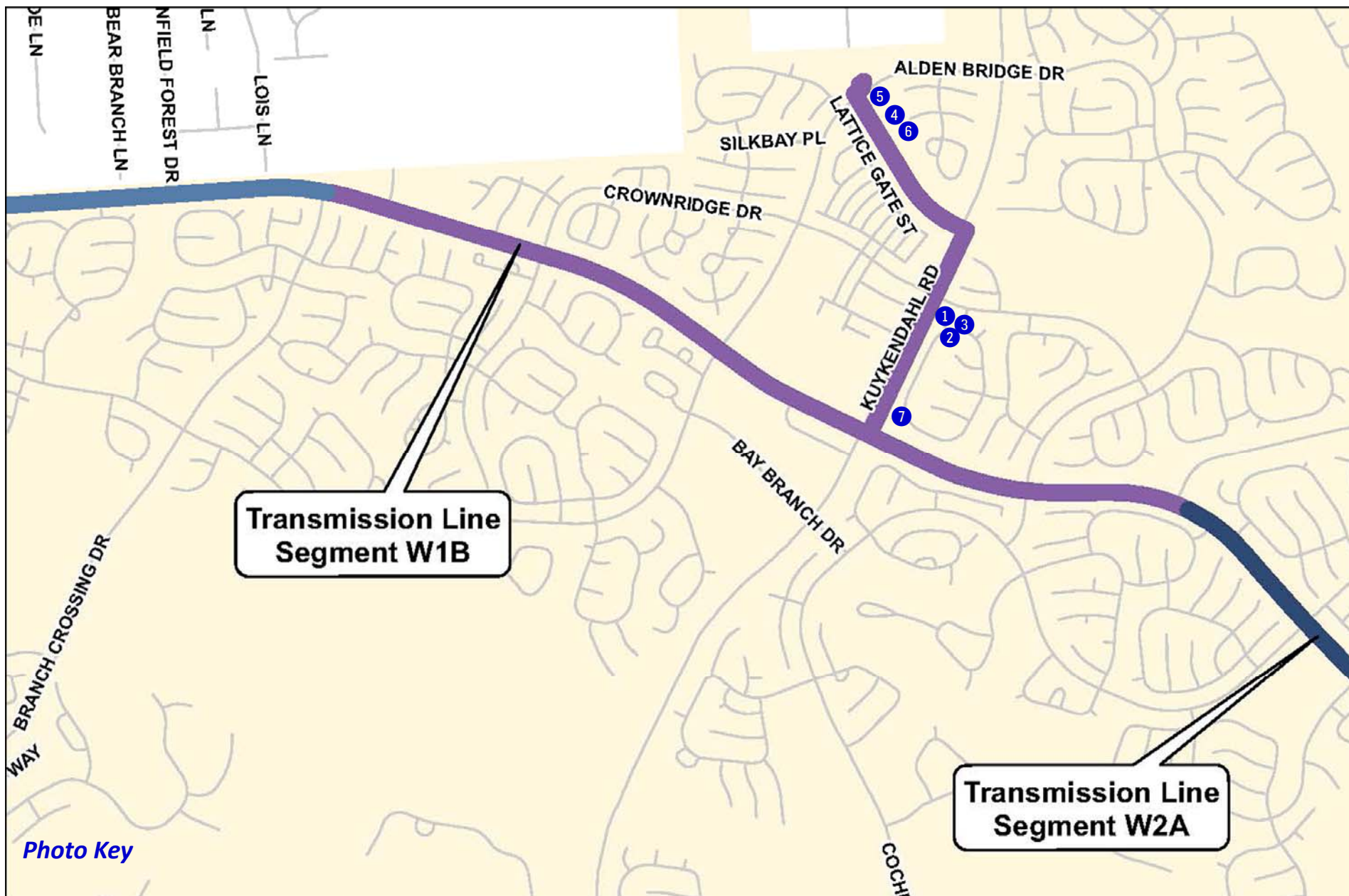
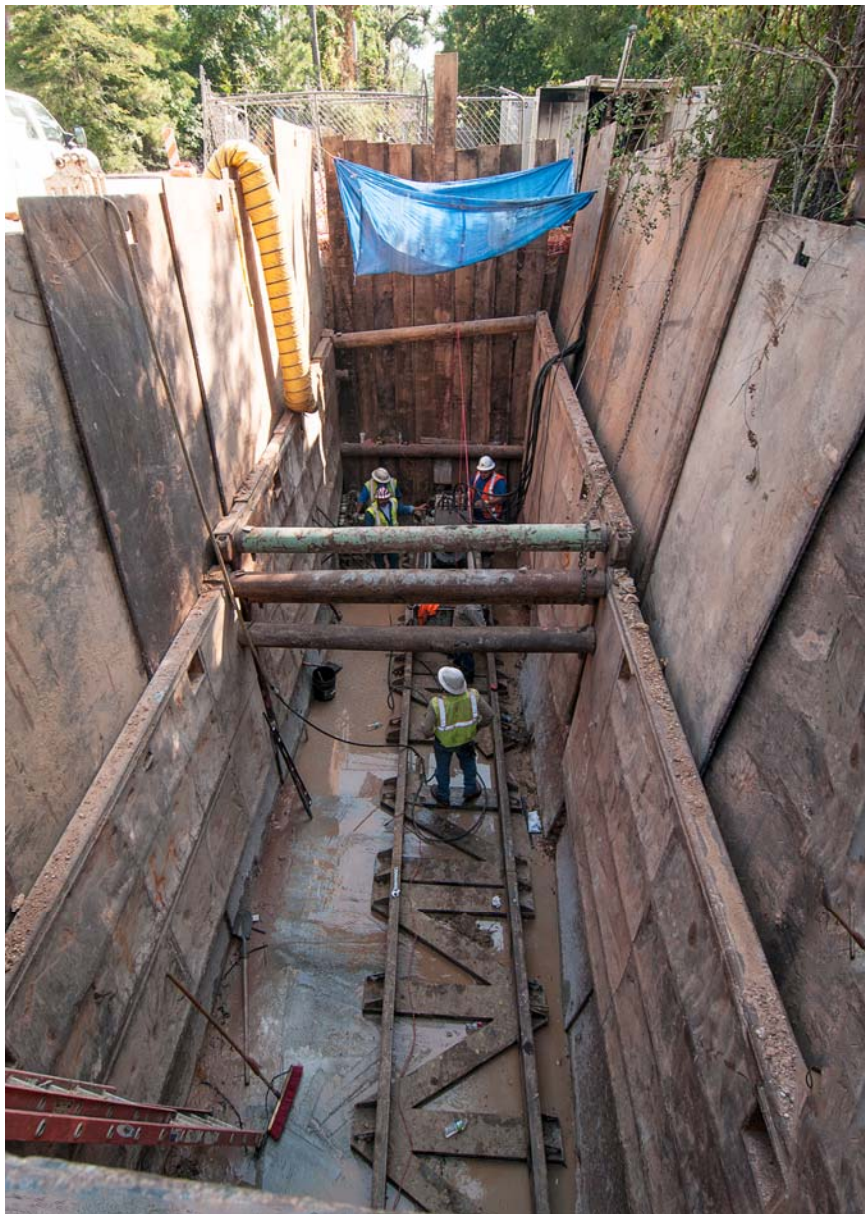
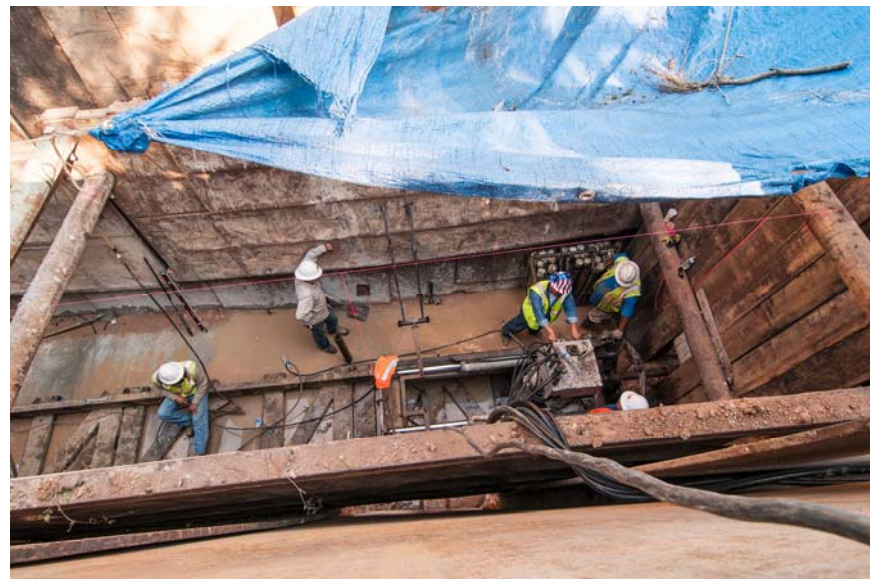


EXHIBIT 11 (con't) Transmission Line Construction Photos



① Segment W1B Tunnel under Crownridge at Kuykendahl



② Segment W1B Tunneling Crew at Crownridge



③ Segment W1B Tunneling Equipment

EXHIBIT 11 (con't) Transmission Line Construction Photos



4 Segment W1B Easement Along Panther Creek



5 Segment W1B 16-inch Well Collection Line - Alden Bridge at Panther Creek



6 Segment W1B Dewatering Operation



7 Segment W1B Research at Kuykendahl