



GROUNDWATER REDUCTION PLAN PROGRAM

MONTHLY PROGRESS REPORT - APRIL 2013



TABLE OF CONTENTS

Table of Contents	i	4.3 Invoices/Applications for Payment	4-1
Acronyms and Definitions	ii	4.4 Contract Amendments and Change Orders	4-1
1.0 Planning	1-1	4.5 Claims	4-2
1.1 Strategic	1-1	4.6 CIP Cash Flow	4-2
1.2 Engineering and Construction	1-1	4.7 CIP Budget Estimates at Completion	4-2
1.3 Meetings	1-1	4.8 Land Acquisition	4-2
2.0 Schedule	2-1	5.0 Quality Assurance	5-1
2.1 Engineering	2-1	6.0 Exhibits	6-1
2.2 Construction	2-1		
3.0 Procurement	3-1		
3.1 Solicitations	3-1		
3.2 Contract Awards	3-1		
3.3 Process and Procedures	3-1		
3.4 Look Ahead	3-1		
4.0 Cost Report and Financial Considerations	4-1		
4.1 GRP Program and GRP Project CIP Budget(s)	4-1		
4.2 Financial Report	4-1		



ACRONYMS AND DEFINITIONS

Acronyms

CA&I	Construction Administration and Inspection
CCT	Construction Communication Team
CIP	Capital Improvement Project
CM&I	Construction Management and Inspection
CMAR	Construction Manager at Risk
CMT	Construction Material Testing
CSB / P	Competitive Sealed Bid / Proposal
EA	Environmental Assessment
EAC	Estimate At Completion
GIS	Geographic Information System
GRP	Groundwater Reduction Plan
GST	Ground Storage Tank
HSPS	High Service Pump Station
LSGCD	Lone Star Groundwater Conservation District
LVGU	Large Volume Groundwater User
PER	Preliminary Engineering Report
PMP	Program Management Plan
PSA	Professional Services Agreement
QA	Quality Assurance
RFB / Q / P	Request For Bids / Qualifications / Proposals
RWI / RWPS	Raw Water Intake / Raw Water Pump Station
SJRA	San Jacinto River Authority
SOQ	Statement Of Qualifications
SWF	Surface Water Facilities (SWTP, HSPS and RWI)
SWRF	Surface Water Receiving Facilities
SWTP	Surface Water Treatment Plant
TBD	To Be Determined
TCEQ	Texas Commission on Environmental Quality
TWDB	Texas Water Development Board
TxDOT	Texas Department Of Transportation
WIF	Water Infrastructure Fund

Definitions

GROUNDWATER REDUCTION PLAN (GRP)	The document developed and filed with the LSGCD indicating SJRA's plan to reduce the permitted 2009 groundwater pumpage of its GRP Participants by 30%. The GRP is administered by the SJRA, including any supplements, revisions, or amendments.
GRP PROGRAM TEAM	SJRA staff, Program Management Consultant (Brown & Gay Engineers, Inc.) staff, and technical consultants working interdependently toward meeting the goals of the Groundwater Reduction Plan.
GRP ADMINISTRATOR	The SJRA General Manager's designee who administers the SJRA Groundwater Reduction Plan and GRP Contract with GRP Participants.
GRP CONTRACT	Contract between the SJRA and a Participant to be included in the SJRA's efforts to meet the surface water conversion requirements mandated by the LSGCD.
JOINT GRP	GRP which is prepared to include (takes into account) LVGUs who have executed a GRP Contract with the SJRA to join the SJRA's GRP. Contracted LVGUs obtain LSGCD groundwater reduction regulation compliance through the SJRA's Joint GRP without preparing and submitting a GRP.
LARGE VOLUME GROUNDWATER USER(S) (LVGU)	Any person or entity that, through a single well or a combination of wells, actually produces or is authorized by permit(s) issued by the LSGCD to produce 10 million gallons or more of groundwater annually on or after January 1, 2008.
PARTICIPANT(S)	Regulated User(s) that enters into and remains subject to a written agreement with the SJRA to be included in the SJRA's GRP and includes the legal successors or assigns of Participant(s).
REGULATED USER(S)	Any public or private entity or person that is or becomes subject to the District Regulatory Plan established by the LSGCD and includes any amendments, revisions or supplements thereto as may be adopted by the LSGCD.
SJRA GRP DIVISION	Division of the SJRA responsible for GRP compliance, and the management, administration, operation and maintenance of the surface water facilities and surface water transmission system.



1.0 PLANNING

The GRP Program Team meets regularly for the purposes of setting performance expectations and goals of the GRP Program, identifying the efforts required to achieve these objectives, evaluating the effectiveness of such efforts, and modifying those efforts based upon both internal and external performance evaluations.

1.1 Strategic

With the award of the final work package, the SWF (Surface Water Facility) is fully in the construction phase. The key effort now is to bring the project to completion, document construction, and focus on implementation details to ensure quality and proper functionality.

On the surface water transmission side of the Program, construction started with a notice to proceed on Segment T1. As final design is reached on the remaining segments, the Program will move through the procurement phase into construction.

1.2 Engineering and Construction

All of the Transmission Line Segments are at or nearing the final design stage. Our engineering consultants will provide procurement services by preparing bid packages and assist in the evaluation of construction proposals. Once construction contracts are awarded, the engineering consultants will provide construction phase services by reviewing submittals and pay applications as work proceeds.

1.3 Meetings

The GRP Program Team continued meeting with GRP Program stakeholders this month. Other meetings included the GRP Program and GRP Project status meetings, monthly progress meetings with Surface Water Transmission system and SWF design consultants. A listing of these meetings is attached as [Exhibit 13](#).



Temporary Construction Platform Installation at Raw Water Pump Station

2.0 SCHEDULE

Currently, the GRP Program remains on schedule for the delivery of treated surface water to select Joint GRP Participants on or before January 1, 2016. A simplified GRP Program schedule may be found in attached [Exhibit 1](#).

2.1 Engineering

Surface Water Transmission System

Segment T1 – Design is complete. Engineering consultant is providing construction phase services.

Segment T2 – Design is complete. Engineering consultant is providing construction phase services.

Segment T3 – Design is complete. Engineering consultant is providing procurement support services.

Segment W1 – Design is complete. Engineering consultant is providing procurement support services.

Segment W2 – Design is complete and engineering consultant is providing construction phase services on Segment W2A. Final design for Segment W2B is 96% complete.

Segment W3 – Design submittal for Segment W3A is 90% complete. Design submittal for Segment W3B is 100% complete.

Segment W4 – Final design is 92% complete.

Segment C1 – Design is complete for Segments C1A and B. Engineering consultant is providing procurement support services.

Segment C2 – Design is complete. Engineering consultant is providing procurement support services.

Segment C3 – Design is complete. Engineering consultant is providing procurement support services.

Segment C4 – Design submittal for is 100% complete.

Surface Water Receiving Facilities – Design is complete. Engineering consultant is providing procurement support services.

Surface Water Facilities

Raw Water Intake Pump Station– Design is complete and construction is underway.

Surface Water Treatment Plant – Design is complete and construction is underway.

High Service Pump Station and Ground Storage Tanks – Design is complete and construction is underway.

Fiber Optic Communications System – 90% design was completed and submitted for review to SJRA by the consultant.

Construction Management and Inspection (CM&I) – The CM&I team completed 90% design submittals review for all current projects (except Standpipe). Submitted CM Plan including QA/QC Plan and CM&I Safety Plan.

Construction Administration and Inspection (CA&I) – The CA&I staff for the SWF is currently working with the CMAR and SJRA staff to review submittals for the SWF.

Cathodic Protection – The cathodic protection consultant has finalized their design for the transmission line segments. They have also continued efforts for the construction phase of cathodic protection for the Surface Water Facilities.

2.2 Construction

Surface Water Transmission System

All of the transmission line segments are scheduled to begin construction during the remainder of 2013.

Segment T1 - A pre-construction meeting was held and a Notice To Proceed was issued on April 15, 2013.

Segments T2, W1A, and W1B - Construction is scheduled to begin in May, 2013.

Surface Water Receiving Facilities

The City of Oak Ridge North began construction of its water plant renovation in April. This project includes surface water receiving facilities for the City of Oak Ridge North.

Surface Water Facilities

Raw Water Intake - Drilled shafts are complete; bridge installation is complete and continuing work on building foundation.

Surface Water Treatment Plant - Progress at the Water Treatment Plant is concentrated at the three (3) main process structures; Pretreatment, Membrane



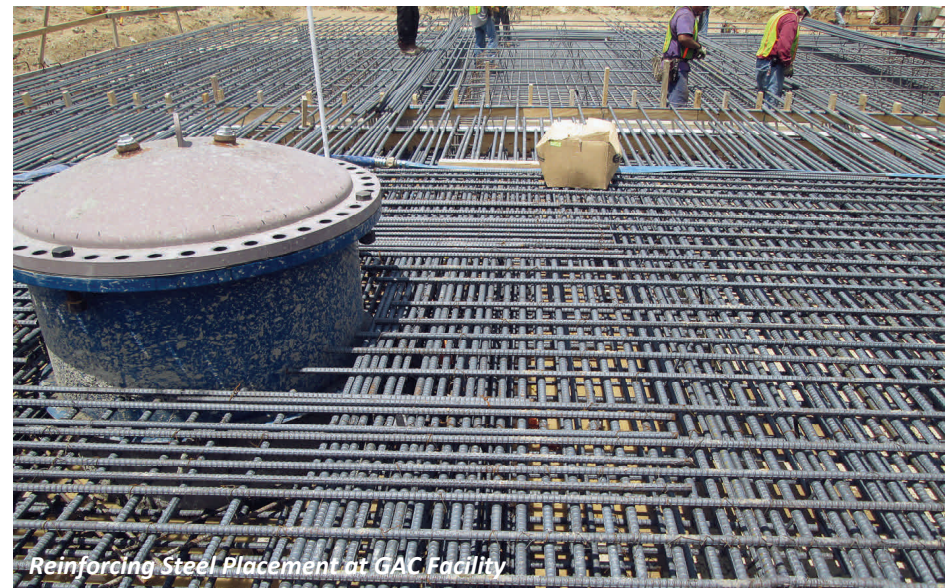
2.0 SCHEDULE (CONTINUED)

Building, and GAC Building. Below, foundation and foundation work is the main focus. Concrete and rebar installation is a daily process.

High Service Pump Station and Ground Storage Tanks - The concrete foundation at the High Service Pump Station is an ongoing process. The main pump room and electrical/control area foundations are being installed ahead of schedule. Progress continues at the Ground Storage Tanks (GST), all wall and roof concrete panels have been cast on site. Installation of panels for both tanks will begin in early May.



Fiber Optic Communications System – Installation of conduit for the fiber will be done along with the transmission line.



3.0 PROCUREMENT

3.1 Solicitations

Solicitations for proposals for construction for April were made for the following:

- San Jacinto River Authority RFP 13-029 Segment T3 54" Water Transmission Line
- San Jacinto River Authority RFP 13-032 Segment W2A 42" & 30" Water Transmission Line along Research Forest Drive

3.2 Contract Awards

The following contracts were awarded for construction in April.

- San Jacinto River Authority Contract No. 13-070 Segment W1A Proposed 54", 48", and 16" Water Transmission Line
- San Jacinto River Authority Contract No. 13-071 Segment W1B Proposed 48", 42", and 20" Water Transmission line and 16" Well Collection Line
- Work Order No. 8 for Construction Phase Seven by design consultant during construction of Surface Water Transmission Line Segment W1A
- Work Order No. 9 for Construction Phase Seven by design consultant for Surface Water Transmission Line Segment W1B
- Professional Services Agreement and Work Order No. 1 for Construction Materials Testing for Various Surface Water Transmission Segments
- Amendment No. 1 to Work Order No. 1 for alignment changes to Surface Water Transmission Line Segment C1

3.3 Process and Procedures

There were no significant changes to the procurement process or procedures this month. The GRP Program continues to utilize traditional and alternative project delivery methods in the procurement of consultant and contractor services.



3.4 Look Ahead

The following list provides a very general look ahead at known and anticipated GRP Program professional services and construction contractor solicitations, contract awards, contract/work order amendments, and assorted agreements such as utility relocations and easement encroachments. Solicitations may be combined, modified, or canceled or time frames may be modified as deemed necessary.

- Construction Contract for Surface Water Transmission Line Segment T3 for the GRP Program
- Work Order No. 7 for Construction Phase Services by Design Consultant during construction of Surface Water Transmission Line Segment T3 for the GRP Program
- Construction Contract for Surface Water Transmission Line Segment W2A for the GRP Program
- Work Order No. 6 for Construction Phase Services by Design Consultant during construction of Surface Water Transmission Line Segment W2A for the GRP Program
- Amendment No. 1 to Work Order No. 3 for Distribution Metering Design at multiple Water Receiving Facilities
- Amendment No. 1 to Work Order No. 3 for Revisions to Metes and Bounds along Surface Water Transmission Line Segment C2 for the GRP Program
- Work Order No. 8 for Program Management Consulting Services for GRP Program

4.0 COST REPORT AND FINANCIAL CONSIDERATIONS

4.1 GRP Program and GRP Project CIP Budget(s)

Through this month, the GRP Program remains under its \$500,000,000 Capital Improvement Project (CIP) Program planning budget, and forecasts continue to indicate it will be completed under budget (see also subsection 4.6 and **Exhibit 7**). A summary of the GRP Program's CIP budget and cost considerations as reported to the GRP Review Committee and the SJRA Board of Directors is provided as attached **Exhibit 5**.

A summary of the SJRA GRP Division's Fiscal Year 2013 (FY13) operating budget (revenue and expenditures) is provided as **Exhibit 6**. The budget includes all normal and customary expenses for operating a utility-based, non-profit business, including debt service, and is developed annually for approval by the SJRA Board of Directors.

The GRP Program is currently operating under the SJRA Board of Director's authorized CIP budget of \$512,400,358.49 (net - \$446,812,553.05). The funding available in the CIP budget allows the SJRA to secure all of the resources required to perform professional services, construction services, and procure long lead time equipment during the design phase of the GRP Program.

4.2 Financial Report

Funding sources presently applied towards the GRP Program CIP budget include the TWDB's Water Infrastructure Fund (WIF; \$21,500,000.00 [gross]; \$21,029,662.92 [net]), the sale of open market Special Project Revenue Bonds, Series 2011 (\$83,430,358.49 [gross]; \$73,522,352.58 [net]), TWDB "D" Funds, Series 2011A (\$67,470,000.00 [gross]; \$57,693,420.67[net]), Series 2012 (\$175,000,000.00 [gross]; \$161,159,055.87 [net]), and 2012A (\$165,000,000 [gross]; \$133,408,061.01 [net]). Approved funding to-date represents approximately 89.4% of the planned \$500,000,000.00 Program budget. The GRP Program's funding, contracted commitments, and forecasted expenditures are summarized in Table 4.1 and further detailed in attached **Exhibits 7, 8 and 9**.

Please note that financial reports do not include investment income.

4.3 Invoices/Applications for Payment

GRP Program level and GRP Project level Consultant Invoices and/or Construction Contractor Applications for Payment received through April 30, 2013, are represented in the Table 4.1 (Item F, April, 2013). A detailed breakdown of Consultant Invoices and/or Construction Contractor Pay Applications received for services performed this month appears in Table 4.2.

Table 4.1 - GRP Program Funding and Contracted Commitments Summary

	Previous (Thru 3/31/13)	Apr-13
A. Approved Funding	512,400,358.49	512,400,358.49
B. Available Funding After Costs	446,812,553.05	446,812,553.05
C. Approved Contracts	315,431,589.27	17,540,584.35
D. Project Close Out	(551,272.27)	(85,565.28)
E. Uncontracted Funding	135,791,387.05	114,477,216.98
F. Invoices Paid	80,301,945.35	7,559,909.74
G. Remaining Funds	366,510,607.70	358,950,697.96

Table 4.2 - GRP Program Consultant Invoice and Contractor Pay Application Summary*

	Previous (Thru 3/31/13)	Apr-13
Engineering & Specialty Consultant (Program)	18,699,246.88	527,003.74
Engineering & Specialty Consultant (Project)	40,665,592.11	784,231.22
Construction Contractor / CMAR	21,877,889.20	4,943,798.27
Totals:	81,242,728.19	6,255,033.23

*Includes Accounts Payable



4.0 COST REPORT AND FINANCIAL CONSIDERATIONS (CONTINUED)

4.4 Contract Amendments and Change Orders

Each of the GRP Program agreements, work orders, and amendments listed in Section 3.2 were presented to the GRP Review Committee at the April 22, 2013, meeting, the SJRA Board meeting on April 25, 2013, and were authorized by the SJRA Board of Directors for execution by the SJRA General Manager.

4.5 Claims

No claims were identified this month.

4.6 CIP Cash Flow

The GRP Program CIP cash flow through calendar year 2015 reflects known expenditures through April 2013. Estimates for future expenditures were updated this month. All active and currently identified future GRP Program projects and initiatives are included in the cash flow. A graph of forecasted monthly expenditures from the referenced cash flow is attached as [Exhibit 10](#).

4.7 CIP Budget Estimates at Completion

4.7.1 GRP Program

The **total gross funds** (including capitalized interest) required to execute Phase I of the GRP Program are currently estimated at \$562,960,358.49.

4.7.2 GRP Projects

The GRP Program projects remained within their approved contract budgets through this month. [Exhibit 11](#) indicates each active GRP Program project and GRP Program contract forecasted estimate at completion (EAC). Additionally, all current GRP Program contracts, including their respective SJRA Board of Director's approved budgeted amounts and percent complete, are listed in [Exhibits 2, 3 and 4](#).

4.8 Land Acquisition

The GRP Program Team, with the support of its assorted land acquisition consultants, continued to make steady progress in acquiring the land and easements necessary for the surface water transmission system. The preparation of metes & bounds descriptions for easements along the transmission line routes continued and are nearing completion. Fifteen (15) easements were acquired in April 2013. There were five easements in Segment T1, three in Segment T3, two

in Segment W3, one in Segment C1, three in Segment C3 and one in Segment W1, bringing the total number of easements acquired to one hundred eighty-two (182). Negotiations to acquire other easements throughout the system are at varying stages of completion. A cumulative summary of easement acquisition activity is provided in [Exhibit 12](#).



5.0 QUALITY ASSURANCE

5.1 Final Design

This month's Quality Assurance (QA) activity associated with final design deliverables produced by the engineering consultants is as follows:

- Dannenbaum (C1) - 100% plans for both Segments C1A and C1B are complete
- SPI (C2) - 100% design plans are complete
- Kimley Horn (C3) - 100% design plans are complete
- Binkley Barfield (Segment W2) - 100% design plans are complete
- Cobb Fendley (Segment W3) - Segment W3A 90% design plans were submitted, Segment W3B 100% design plans were submitted
- LJA Engineering (Segment W4) - Final design plans are 92% complete

As final design continues and milestone submittals are received, the GRP Program Team will review and provide comments as applicable to each submittal. The review will be based on submittal compliance with the GRP Program's Design Standards and Criteria Manual, completeness per Program Management Plan (PMP) Section 14.0 – Quality Management and Section 21.0 – Design Management, and general project understanding.

5.2 Pre-Construction

The CM&I Team continued Construction Phase Services in April. The team reviewed proposal documents for Segments C1A, C1B, and the North and South Water Receiving Facilities, assisted in development of addendums and answers for contractor questions, completed the contractor evaluation for Segment T3, participated in negotiations with contractors and conducted a pre-construction conference and issued NTP for Segment T1.

5.3 Construction

Quality assurance efforts by the SJRA Construction Inspectors as well as the SWF CA&I consultant continued this month with the continuation of SWF construction, primarily for the RWI, HSPS and GSTs. Efforts included regular visits to the project site to monitor and document observed progress and confirm compliance with the construction contract. Similar quality assurance efforts by the SJRA Construction

Inspectors and CM&I consultant for the SWRF and surface water transmission system will commence with the beginning of construction on those respective projects.



6.0 EXHIBITS

Exhibit 1 - GRP Program Schedule

Exhibit 2 - Selected GRP Program Design Contracts

Exhibit 3—Selected GRP Program Consultant Contracts

Exhibit 4—Selected GRP Program Construction Contracts

Exhibit 5 - Monthly GRP Program Financing Report

Exhibit 6 - GRP Unaudited Schedule of Revenues & Expenses - Actual & Budget and Clarification of Actual & Budget Variances

Exhibit 7 - GRP Program Capital Improvements Program Estimate-to-Complete

Exhibit 8 - GRP Program Fund Data

Exhibit 9- Funding Source Summary

Exhibit 10 - GRP Monthly Forecasted Expenditures for Contracted Services

Exhibit 11 - Estimate at Completion (EAC) for Current Authorizations

Exhibit 12 - Land Acquisition Summary

Exhibit 13 - GRP Program Monthly Meeting Log

Exhibit 14 - Construction Photos



Exhibit 1 - GRP Program Schedule

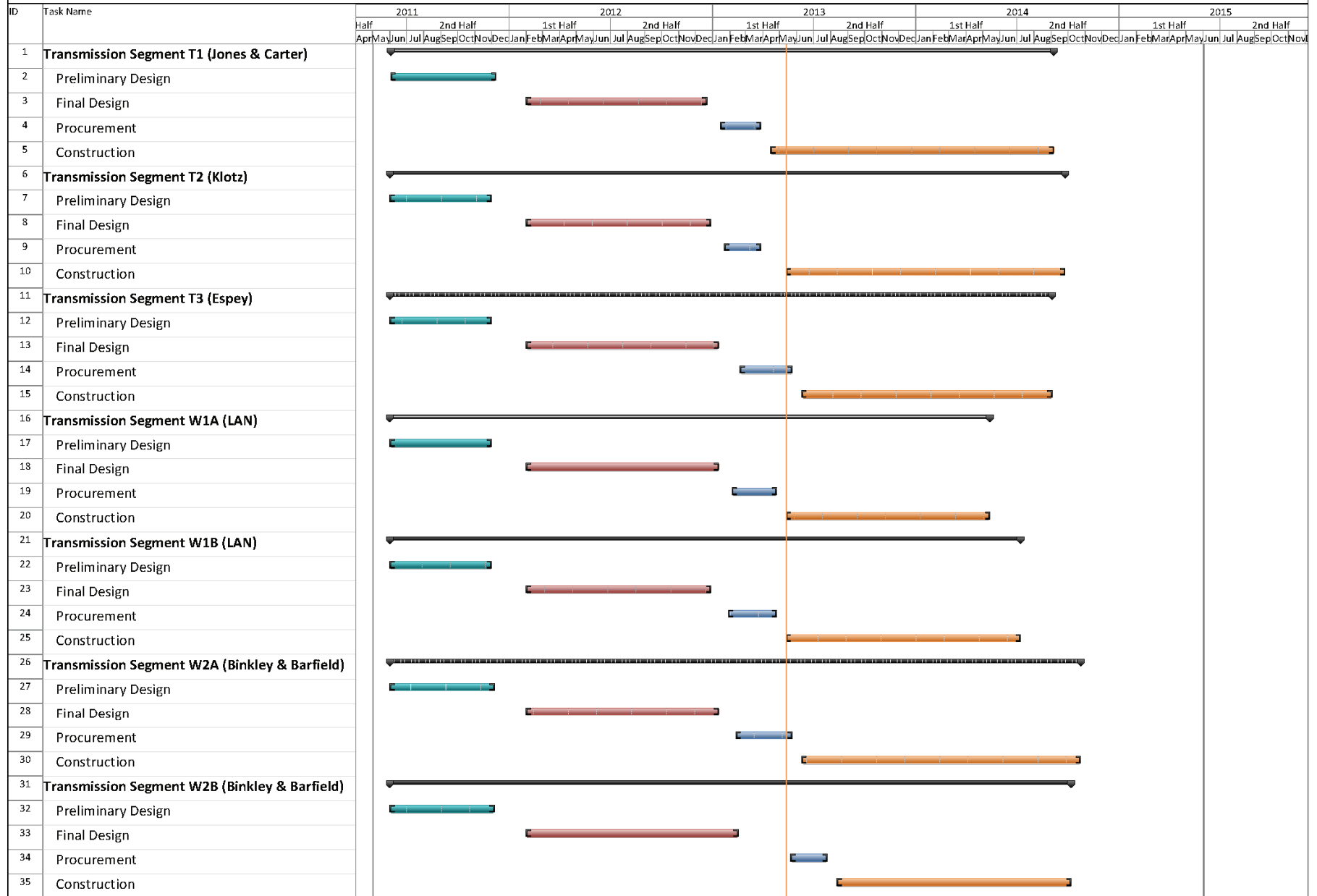


Exhibit 1 - GRP Program Schedule

ID	Task Name	2011		2012				2013				2014				2015															
		Half		1st Half		2nd Half		1st Half		2nd Half		1st Half		2nd Half		1st Half		2nd Half													
		Apr	May	Jun	Jul	Aug	Sep	Oct	Nov	Dec	Jan	Feb	Mar	Apr	May	Jun	Jul	Aug	Sep	Oct	Nov	Dec	Jan	Feb	Mar	Apr	May	Jun	Jul	Aug	Sep
36	Transmission Segment W3A (Cobb Fendley)	[Timeline bar from Apr 2011 to Jun 2014]																													
37	Preliminary Design	[Green bar from Apr 2011 to Oct 2011]																													
38	Final Design	[Red bar from Feb 2012 to May 2013]																													
39	Procurement	[Blue bar from Jul 2013 to Sep 2013]																													
40	Construction	[Orange bar from Nov 2013 to Jun 2014]																													
41	Transmission Segment W3B (Cobb Fendley)	[Timeline bar from Apr 2011 to Jun 2014]																													
42	Preliminary Design	[Green bar from Apr 2011 to Oct 2011]																													
43	Final Design	[Red bar from Feb 2012 to May 2013]																													
44	Procurement	[Blue bar from Jul 2013 to Sep 2013]																													
45	Construction	[Orange bar from Nov 2013 to Jun 2014]																													
46	Transmission Segment W4 (LJA)	[Timeline bar from Apr 2011 to Jun 2014]																													
47	Preliminary Design	[Green bar from Apr 2011 to Oct 2011]																													
48	Final Design	[Red bar from Feb 2012 to May 2013]																													
49	Procurement	[Blue bar from Jul 2013 to Sep 2013]																													
50	Construction	[Orange bar from Nov 2013 to Jun 2014]																													
51	Transmission Segment C1-A (Dannenbaum)	[Timeline bar from Apr 2011 to Jun 2014]																													
52	Preliminary Design	[Green bar from Apr 2011 to Oct 2011]																													
53	Final Design	[Red bar from Feb 2012 to May 2013]																													
54	Procurement	[Blue bar from Jul 2013 to Sep 2013]																													
55	Construction	[Orange bar from Nov 2013 to Jun 2014]																													
56	Transmission Segment C1-B (Dannenbaum)	[Timeline bar from Apr 2011 to Jun 2014]																													
57	Preliminary Design	[Green bar from Apr 2011 to Oct 2011]																													
58	Final Design	[Red bar from Feb 2012 to May 2013]																													
59	Procurement	[Blue bar from Jul 2013 to Sep 2013]																													
60	Construction	[Orange bar from Nov 2013 to Jun 2014]																													
61	Transmission Segment C2 (Schaumburg & Polk)	[Timeline bar from Apr 2011 to Jun 2014]																													
62	Preliminary Design	[Green bar from Apr 2011 to Oct 2011]																													
63	Final Design	[Red bar from Feb 2012 to May 2013]																													
64	Procurement	[Blue bar from Jul 2013 to Sep 2013]																													
65	Construction	[Orange bar from Nov 2013 to Jun 2014]																													
66	Transmission Segment C3 (Kimley-Horn)	[Timeline bar from Apr 2011 to Jun 2014]																													
67	Preliminary Design	[Green bar from Apr 2011 to Oct 2011]																													
68	Final Design	[Red bar from Feb 2012 to May 2013]																													
69	Procurement	[Blue bar from Jul 2013 to Sep 2013]																													
70	Construction	[Orange bar from Nov 2013 to Jun 2014]																													

Exhibit 1 - GRP Program Schedule

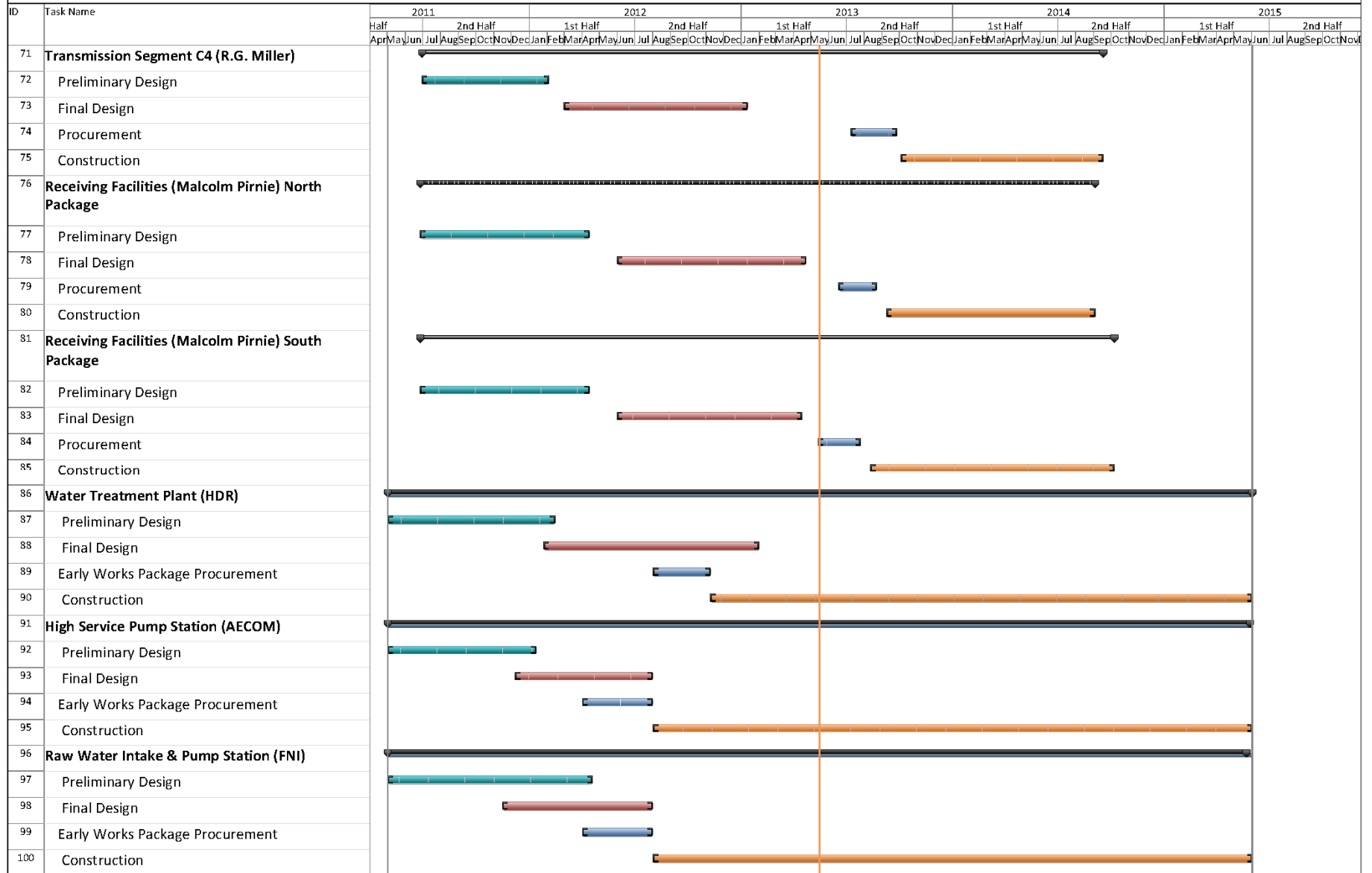


Exhibit 2

Selected GRP Program Design Contracts

April 2013

Engineering Consultant	Project Name	PER Fee	Percent Complete	Metes & Bounds Fee	Percent Complete	Final Design Fee	Percent Complete	CPS Fee	Percent Complete	Engineer's Construction Cost Estimate
Jones & Carter	Transmission Segment T1	\$ 923,031	100%	*		\$ 975,317	100%	\$ 252,899.00	0%	\$ 14,521,937 ⁽²⁾
Klotz	Transmission Segment T2	\$ 623,565	100%	\$ 170,848	100%	\$ 843,531	100%	\$ 260,445.00	0%	\$ 13,383,928 ⁽²⁾
Espey	Transmission Segment T3	\$ 553,123	100%	\$ 146,847	100%	\$ 901,165	100%			\$ 10,801,955
Lockwood, Andrews, Newnan	Transmission Segment W1	\$ 920,621	100%	\$ 172,484	100%	\$ 1,086,983	100%	\$ 284,980.50	0%	\$ 15,435,545 ⁽²⁾
Binkley & Barfield, Inc.	Transmission Segment W2	\$ 956,154	100%	\$ 39,017	100%	\$ 1,580,296	96%			\$ 27,495,952
Cobb Fendley	Transmission Segment W3	\$ 1,076,441	100%	\$ 535,228	95%	\$ 1,609,338	95%			\$ 18,149,072
LJA	Transmission Segment W4	\$ 364,730	100%	\$ 32,482	85%	\$ 528,856	92%			\$ 6,670,718
Dannenbaum	Transmission Segment C1	\$ 332,300	100%	\$ 38,034	100%	\$ 509,769	95%			\$ 7,097,231
Schaumburg & Polk	Transmission Segment C2	\$ 1,003,246	100%	\$ 309,980	100%	\$ 685,068	98%			\$ 11,988,094
Kimley-Horn	Transmission Segment C3	\$ 490,286	100%	\$ 159,740	100%	\$ 616,103	95%			\$ 7,912,316
R.G. Miller	Transmission Segment C4	\$ 217,507	100%	\$ 18,016	100%	\$ 281,449	97%			\$ 3,805,641
Malcolm Pirnie ⁽¹⁾	Receiving Facilities	\$ 598,651	100%	\$ -		\$ 1,209,451	95%			\$ 13,759,750



Exhibit 2 (con't)
Selected GRP Program Design Contracts
April 2013

Engineering Consultant	Project Name	PER Fee	Percent Complete	Metes & Bounds Fee	Percent Complete	Final Design Fee	Percent Complete	CPS Fee	Percent Complete	Engineer's Construction Cost Estimate
HDR, Inc.	Water Treatment Plant	\$ 3,079,273	100%			\$ 7,694,130	98%	\$ 2,914,770.00	5.0%	\$ 121,275,438 ⁽²⁾
AECOM, Inc.	High Service Pump Station	\$ 1,072,948	100%			\$ 3,044,066	100%	\$ 940,719.00	30%	\$ 35,661,233 ⁽²⁾
Freese and Nichols, Inc.	Raw Water Intake and Pump Station	\$ 1,138,540	100%			\$ 1,523,752	100%	\$ 969,860.00	45%	\$ 31,323,850 ⁽²⁾
ACES	Access Rd. & San. Swr. Relocation; Temp. SWF Access Rd.					\$ 434,960	100%	\$ 49,960.36	58%	\$ 525,756; \$ 1,389,868 (2)
EMA, Inc.	Fiber Optic System	\$ 161,390	100%			\$ 279,899	93%			\$ 5,364,000
TOTALS		\$ 13,511,806	-	\$ 1,622,676	-	\$ 23,804,134	-	\$ 5,673,634	-	\$ 346,562,284

⁽¹⁾ Metes and bounds efforts are included in the final design survey work order.

⁽²⁾ Contracted amount



Exhibit 3
Selected GRP Program Consultant Contracts
April 2013

Engineering Consultant	Program Consultant Service	Total Fee of Work Orders	Percent Complete
Brown & Gay Engineers	Program Management	\$ 9,056,918	96%
Raba Kistner	Geotechnical	\$ 145,260	64%
LandTech	Survey	\$ 514,524	89%
Halff	Environmental	\$ 569,919	100%
Property Acquisition Services	Land Acquisition	\$ 1,413,335	64%
V&A	Cathodic Protection	\$ 866,676	56%
KDM	Land Acquisition	\$ 401,593	77%
Andrews Kurth	Legal	\$ 2,700,000	69%
Mike Bellar	Legal	\$ 100,000	44%
Brown & Caldwell	CMAR Contract Development Assistance	\$ 78,202	100%
Greenburg Traurig	Legal	\$ 200,000	48%
AECOM	Transient	\$ 311,400	89%
KBR	CM&I	\$ 8,124,255	6%
CDM	CA&I	\$ 5,348,633	14%
Total		\$ 24,482,081	



Exhibit 4
Selected GRP Program Construction Contracts
April 2013

Construction Project	Construction Contractor	Contract Amount	Percent Complete
GRP Building No. 1	Brookstone	\$ 2,008,673	100%
GRP Temporary Access Road	Lindsey Construction	\$ 977,584	100%
Aqua Texas Sanitary Sewer and Road Relocation	Randy Roan	\$ 525,756	100%
GRP Building No. 1 Fiber Line	Preferred Technologies	\$ 231,158	100%
CMAR	McCarthy	\$ 190,704,740	18%
SWF Construction Materials Testing	Geotest	\$ 1,976,659	15%
Transmission Lines Construction Materials Testing - North	Terracon	\$ 1,006,711	0%
Transmission Line T1	S.J Louis	\$ 14,521,937	0%
Transmission Line T2	Texas Sterling	\$ 13,383,928	0%
Transmission Line W1A	Huff & Mitchell	\$ 8,222,001	0%
Transmission Line W1B	Texas Sterling	\$ 7,213,545	0%
Transmission Lines Construction Materials Testing - South	Aviles	\$ 1,601,330	0%
Total		\$ 196,424,569	



Exhibit 5

Monthly GRP Program Financing Report

Fiscal Year 2013

Through April 30, 2013

	WIF Funds	2011 Special Projects Revenue Bonds	TWDB 2011 'D' Fund	2012 Special Projects Revenue Bonds	2012a Special Projects Revenue Bonds	Totals
A. Program Budget						
Bond Issue Amount	\$ 21,500,000.00	\$ 83,430,358.49	\$ 67,470,000.00	\$ 175,000,000.00	\$ 165,000,000.00	\$ 512,400,358.49
Total Investment	\$ 21,500,000.00	\$ 83,430,358.49	\$ 67,470,000.00	\$ 175,000,000.00	\$ 165,000,000.00	\$ 512,400,358.49
B. Contracted Costs						
Contracts Completed	\$ 15,741,519.40	\$ 11,209,652.32	\$ 2,152,739.80	\$ -	\$ -	\$ 29,103,911.52
Current Contract Values	\$ 5,269,622.44	\$ 39,948,220.65	\$ 32,195,304.70	\$ 161,159,055.87	\$ 64,084,892.27	\$ 302,657,095.93
Change Orders	\$ -	\$ 951,566.17	\$ 259,600.00	\$ -	\$ -	\$ 1,211,166.17
Project Close Out	\$ (282,944.82)	\$ (353,892.73)	\$ -	\$ -	\$ -	\$ (636,837.55)
Total	\$ 20,728,197.02	\$ 51,755,546.41	\$ 34,607,644.50	\$ 161,159,055.87	\$ 64,084,892.27	\$ 332,335,336.07
C. Expenditures						
Paid Previous Fiscal Years	\$ 19,966,012.81	\$ 24,949,084.37	\$ 478,705.50	\$ -	\$ -	\$ 45,393,802.68
Paid Current Fiscal Year	\$ 334,540.97	\$ 14,617,393.91	\$ 9,150,130.33	\$ 18,365,987.20	\$ -	\$ 42,468,052.41
Issuance Costs	\$ 470,337.08	\$ 2,049,764.39	\$ 751,195.33	\$ 971,769.13	\$ 952,269.99	\$ 5,195,335.92
Capitalized Interest	\$ -	\$ 7,858,241.52	\$ 9,025,384.00	\$ 12,869,175.00	\$ 30,639,669.00	\$ 60,392,469.52
Total	\$ 20,770,890.86	\$ 49,474,484.19	\$ 19,405,415.16	\$ 32,206,931.33	\$ 31,591,938.99	\$ 153,449,660.53
D. Remaining						
Uncontracted Funds	\$ 301,465.90	\$ 21,766,806.17	\$ 23,085,776.17	\$ -	\$ 69,323,168.74	\$ 114,477,216.98
Fund Balance *	\$ 729,109.14	\$ 33,955,874.30	\$ 48,064,584.84	\$ 142,793,068.67	\$ 133,408,061.01	\$ 358,950,697.96

*Excluding net investment income



Exhibit 6

**San Jacinto River Authority
Groundwater Reduction Plan
Schedule of Revenues & Expenses - Actual & Budget
For the Eight Months Ending April 30, 2013**

	April	Year To Date				Fiscal Budget	
	Actual	Actual	Budget	Variance	% Variance	Total Year Budget	Actual YTD % of Tot Yr. Budget
OPERATING REVENUES							
Water sales							
GRP pumping fees	\$ 1,096,539	\$ 12,750,162	\$ 12,695,464	\$ 54,698	0%	\$ 21,997,181	58%
TOTAL OPERATING REVENUES	\$ 1,096,539	\$ 12,750,162	\$ 12,695,464	\$ 54,698	0%	\$ 21,997,181	58%
OPERATING EXPENSES							
Payroll & employee benefit expenses	\$ 200,724	\$ 1,791,000	\$ 2,696,100	\$ 905,101	34%	\$ 4,044,146	44%
Professional fees	12,761	126,641	277,336	150,695	54%	344,000	37%
Purchased & contracted services	3,835	66,497	157,833	91,336	58%	236,750	28%
Supplies, materials & utilities	22,538	2,084,001	2,438,930	354,929	15%	2,533,168	82%
Maintenance repairs, parts & rentals	(2,505)	8,239	10,240	2,001	20%	15,360	54%
General & administration	96,226	487,581	749,546	261,965	35%	1,124,319	43%
TOTAL OPERATING EXPENSES	\$ 333,579	\$ 4,563,960	\$ 6,329,986	\$ 1,766,026	28%	\$ 8,297,743	55%
NON-OPERATING REVENUES & EXPENSES							
Interest on investments	\$ 130,411	\$ 656,267	\$ 1,578,132	\$ (921,865)	(58%)	\$ 2,369,785	28%
Other revenues	-	1,430	-	1,430	100%	-	100%
Depreciation	(21,147)	(166,265)	-	(166,265)	100%	-	100%
Interest expense	(1,661,355)	(11,099,336)	(10,735,715)	(363,621)	3%	(17,540,882)	63%
Amortized debt issuance expense	(14,142)	(113,136)	-	(113,136)	100%	-	100%
TOTAL NON-OPERATING	\$ (1,566,233)	\$ (10,721,040)	\$ (9,157,583)	\$ (1,563,457)	17%	\$ (15,171,097)	71%
NET INCOME (LOSS)	\$ (803,273)	\$ (2,534,837)	\$ (2,792,104)	\$ 257,267	(9%)	\$ (1,471,659)	172%



Exhibit 6 (con't)

GRP Division

Clarification of Actual & Budget Variances

(in thousands)

Category	Driver	FYTD 2013
GRP Pumping Fees	Usage variance due to weather conditions.	55
Payroll and related expenses	Budgeted positions not filled per schedule.	905
Professional Fees	Professional fees less than budgeted.	151
Purchased & Contracted Services	Purchased and contracted services less than budgeted.	91
Supplies, Materials, Utilities, Maintenance, Repairs, Parts & Rentals	Additional Water Supply, costs not yet realized.	300
	Reservation Fees 2012 true-up	33
	Travel, fuel, office supplies, phones, utilities, recruiting and misc. expenses less than budgeted.	24
General & Administration	Allocated labor and related expenses less than budgeted, anticipated a quicker rate of growth than has been actualized.	262
Non-Operating	Interest/Investment Income	(920)
	Depreciation expense	(166)
	Bond Issuance Cost Amort expense	(113)
	Bond interest expense	(364)
		<u>257</u>



Exhibit 7 GRP Program Capital Improvements Program Estimate-At-Completion

SERVICES	ESTIMATE-AT-COMPLETION
Pre-Engineering Phase Services	\$ 4,676,398
(GRP Development, Environmental Studies, Pilot Plant, Surface Water Treatment Plant Site Survey)	
Engineering Phase Services	\$ 42,457,705
(Planning, Preliminary Engineering, Final Engineering, Geotechnical, Survey, Metes & Bounds, Subsurface Utility Investigation, Environmental)	
Construction Phase Services	\$ 27,126,488
(Engineering Services During Construction, Construction Management & Inspection [Transmission System], Construction Administration & Inspection [SWF], Material Testing)	
Construction	\$ 391,947,279
(Surface Water Transmission System, Raw Water Intake and Pump Station, Surface Water Treatment Plant, High Service Pump Station and Ground Storage Tanks, Surfacewater Receiving Facilities, Infrastructure, Buildings, Roadways, Site Security, Access Roadways)	
Transmission Segment C1 - Construction	\$ 7,097,231
Transmission Segment C2 - Construction	\$ 11,988,094
Transmission Segment C3 - Construction	\$ 7,912,316
Transmission Segment C4 - Construction	\$ 3,805,641
Transmission Segment T1 - Construction	\$ 15,248,034
Transmission Segment T2 - Construction	\$ 14,053,125
Transmission Segment T3 - Construction	\$ 10,801,955
Transmission Segment W1 - Construction	\$ 16,207,322
Transmission Segment W2 - Construction	\$ 27,495,952
Transmission Segment W3 - Construction	\$ 18,149,072
Transmission Segment W4 - Construction	\$ 6,670,718
Receiving Facilities - Construction	\$ 17,107,925
SWF Work Package No. 1	\$ 10,346,793
SWF Work Package No. 2	\$ 32,528,047
SWF Work Package No. 3	\$ 47,456,718
SWF Work Package No. 4 (GMP)	\$ 100,373,182
Transmission System Fiber Optic - Construction	\$ 5,364,000
Permanent Access Roadway Construction	\$ 8,000,000
Building No. 1; Access Road; Vegetative Buffer; Construction Materials Testing; SWF Site Vegetation Management; Sanitary Sewer/Access Rd. Relocation ⁽¹⁾	\$ 4,326,704
Other Offsite Construction (Stand Pipe, Transmission Line Utility Relocations, Receiving Facility Improvements) ⁽¹⁾	\$ 20,687,772
Non-Project Specific Contingency	\$ 6,326,678
Program Management	\$ 12,235,136
(GRP Program Management, Survey, Geotechnical, Transient, Corrosion, Legal Consultants)	
Land Acquisition	\$ 11,978,302
(Legal, Appraisal, Title Research, Land Acquisition Consultants) ⁽²⁾	
Total:	\$ 490,421,308

Bond issuance costs are not included.

⁽¹⁾ Costs other than transmission and surface water facilities now separated into two categories

⁽²⁾ Includes revisions to land acquisition cost estimates and recategorizing of contingency.

Exhibit 8

GRP Program Fund Data as of April 30, 2013

Funding Source	Amount Authorized by Board To-Date	Interest Rate	Bond Costs	Capitalized Interest	Debt Service Reserve Fund	Net Amount Currently Available	Pending Funding Source	Invoiced To-Date	Remaining Amount
WIF Bond Issue	\$ 21,500,000.00	.854% - 2.706%	\$ 470,337.08	\$ -	\$ -	\$ 21,029,662.92		\$ 20,368,872.62	\$ 660,790.30
Open Market Bond Issue (Series 2011)	\$ 83,430,358.49	3% - 5.25%	\$ 2,049,764.39	\$ 7,858,241.52	\$ -	\$ 73,522,352.58		\$ 39,026,485.67	\$ 34,495,866.91
TWDB Dfund Series 2011A	\$ 67,470,000.00	1.22% - 4.97%	\$ 751,195.33	\$ 5,166,233.00	\$ 3,859,151.00	\$ 57,693,420.67		\$ 10,128,811.35	\$ 47,564,609.32
TWDB Dfund Series 2012	\$ 175,000,000.00	1.17% - 4.62%	\$ 971,769.13	\$ 12,869,175.00	\$ -	\$ 161,159,055.87		\$ 18,365,235.20	\$ 142,793,820.67
TWDB Dfund Series 2012A	\$ 165,000,000.00	1.26% - 4.62%	\$ 952,269.99	\$ 14,139,669.00	\$ 16,500,000.00	\$ 133,408,061.01		\$ -	\$ 133,408,061.01
Subtotal Approved Amounts	\$ 512,400,358.49		\$ 5,195,335.92	\$ 40,033,318.52	\$ 20,359,151.00	\$ 446,812,553.05	\$ -	\$ 87,889,404.84	\$ 358,923,148.21
Future Series 2013 (Est.)	\$ 39,850,000.00	4.01%	\$ 628,750.00	\$ 2,837,087.00	\$ 2,275,747.00	\$ -	\$ 34,108,416.00	\$ -	\$ 34,108,416.00
Future Series 2014 (Est.)	\$ 10,710,000.00	4.06%	\$ 293,700.00	\$ 787,388.00	\$ 128,573.00	\$ -	\$ 9,500,339.00	\$ -	\$ 9,500,339.00
Subtotal Future Amounts	\$ 50,560,000.00		\$ 922,450.00	\$ 3,624,475.00	\$ 2,404,320.00	\$ -	\$ 43,608,755.00	\$ -	\$ 43,608,755.00
Totals	\$ 562,960,358.49		\$ 6,117,785.92	\$ 43,657,793.52	\$ 22,763,471.00	\$ 446,812,553.05	\$ 43,608,755.00	\$ 87,889,404.84	\$ 402,531,903.21

Notes:

1. These value do not include investment income.
2. Green items are estimates only.
3. Series 2011 bond costs include \$681,132.45 for bond insurance and \$459,709.50 for underwriter's discount.



Exhibit 9 Funding Source Summary April 30, 2013

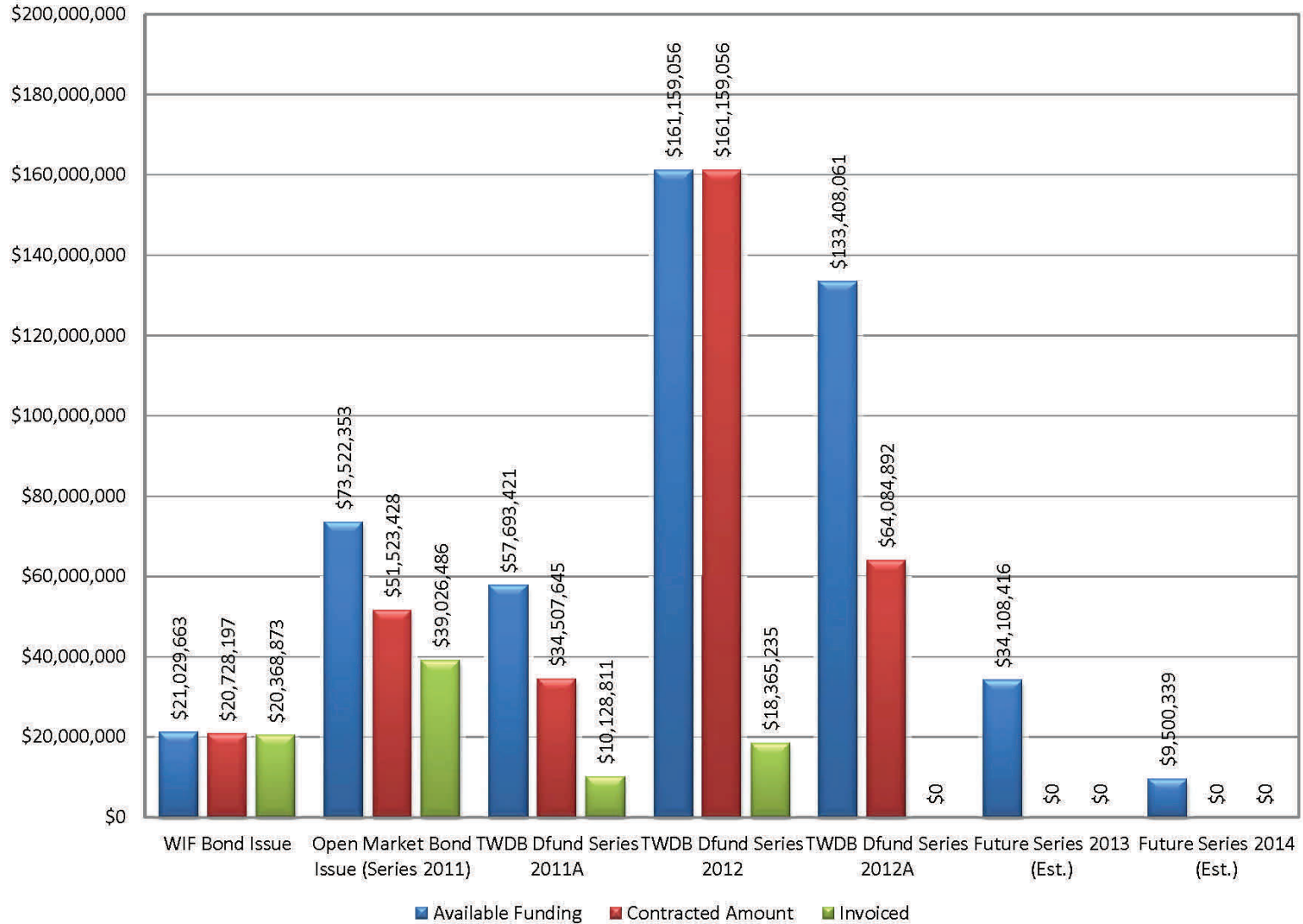


Exhibit 10

GRP Program Monthly Forecasted Expenditures for Contracted Services April 30, 2013

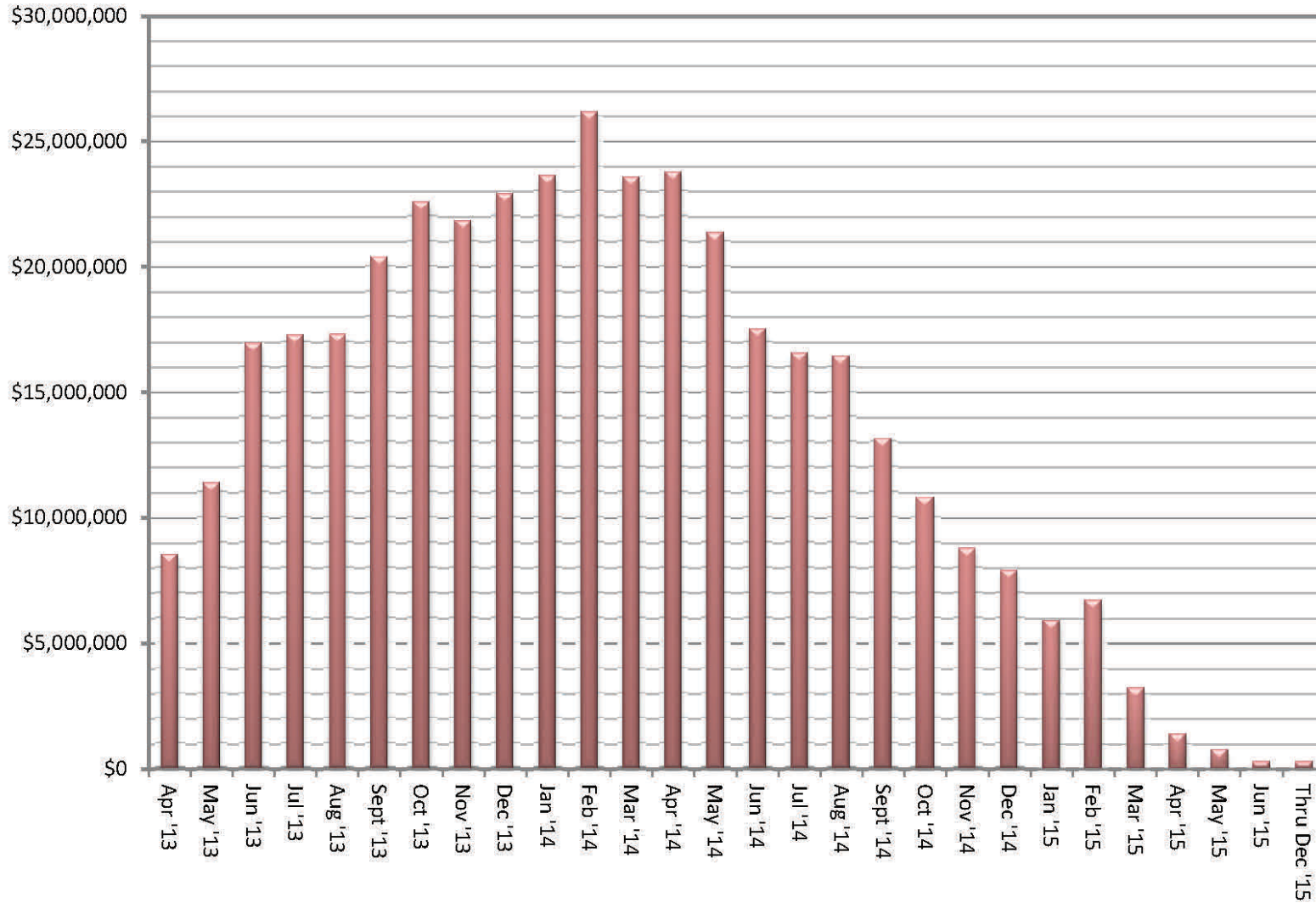


Exhibit 11
Estimate at Completion (EAC) for Current Authorizations
April 30, 2013

Surface Water Transmission System

Project	Firm	Amount Authorized by Board	Board Authorized Modifications		Forecasted Modification Amount	Estimate at Completion (EAC)
			Dollars	%		
T1	Jones & Carter	\$ 2,310,646.00	\$ 93,500.00	4.0%		\$ 2,404,146.00
T2	Klotz	\$ 2,158,833.55		0.0%		\$ 2,158,833.55
T3	Espey	\$ 1,555,154.42		0.0%		\$ 1,555,154.42
W1	LAN	\$ 2,465,068.90		0.0%		\$ 2,465,068.90
W2	Binkley & Barfield	\$ 2,568,427.19	\$ 7,040.00	0.3%		\$ 2,575,467.19
W3	Cobb Fendley	\$ 3,221,006.86		0.0%		\$ 3,221,006.86
W4	LJA	\$ 876,011.82	\$ 17,574.56	2.0%		\$ 893,586.38
C1	Dannenbaum	\$ 860,857.00	\$ 19,246.00	2.2%		\$ 880,103.00
C2	Schaumburg & Polk	\$ 1,790,745.97	\$ 207,547.98	11.6%		\$ 1,998,293.95
C3	Kimley-Horn	\$ 1,202,256.89	\$ 31,936.55	2.7%		\$ 1,234,193.44
C4	R.G. Miller	\$ 526,737.05		0.0%		\$ 526,737.05
WRFs	Malcolm Pirnie/Arcadis	\$ 1,808,102.00		0.0%		\$ 1,808,102.00
CM&I	KBR	\$ 8,124,254.62		0.0%		\$ 8,124,254.62
Subtotal - Surface Water Transmission System		\$ 29,468,102.27	\$ 376,845.09	1.3%	\$ -	\$ 29,844,947.36

Surface Water Facilities

Project	Firm	Amount Authorized by Board	Board Authorized Modifications		Forecasted Modification Amount	Estimate at Completion (EAC)
			Dollars	%		
WTP	HDR	\$ 17,164,257.21	\$ 533,488.00	3.1%		\$ 17,697,745.21
HSPS	AECOM	\$ 4,324,402.56		0.0%		\$ 4,324,402.56
StandPipe	AECOM	\$ 192,281.00		0.0%		\$ 192,281.00
RWI&PS	Freese and Nichols	\$ 3,901,773.35		0.0%		\$ 3,901,773.35
CMAR	McCarthy	\$ 190,704,740.00		0.0%		\$ 190,704,740.00
CA&I	CDM	\$ 5,348,633.00		0.0%		\$ 5,348,633.00
Subtotal - Surface Water Facilities		\$ 221,636,087.12	\$ 533,488.00	0.2%	\$ -	\$ 222,169,575.12



Exhibit 11 (con't)

Estimate at Completion (EAC) for Current Authorizations

April 30, 2013

Program Consultant Services & Other Projects

Project	Firm	Amount Authorized by Board	Board Authorized Modifications		Forecasted Modification Amount	Estimate at Completion (EAC)
			Dollars	%		
Prog Mgmt	Brown & Gay	\$ 9,056,918.06		0.0%		\$ 9,056,918.06
Prog Survey	Landtech	\$ 514,524.00		0.0%		\$ 514,524.00
Prog Geo	Raba Kistner	\$ 145,260.00		0.0%		\$ 145,260.00
Prog Tran	AECOM	\$ 161,400.00	\$ 150,000.00	92.9%		\$ 311,400.00
Access Rd	ACES	\$ 434,972.13		0.0%		\$ 434,972.13
Access Rd	S&V Survey	\$ 66,875.00		0.0%		\$ 66,875.00
Land Acq	KDM	\$ 359,887.70	\$ 41,705.00	11.6%		\$ 401,592.70
Land Acq	PAS	\$ 1,413,334.88		0.0%		\$ 1,413,334.88
Prog Env	Halff	\$ 526,862.58	\$ 43,056.29	8.2%		\$ 569,918.87
Prog Fiber	EMA	\$ 441,289.00		0.0%		\$ 441,289.00
Prog Corr	V&A	\$ 866,676.00		0.0%		\$ 866,676.00
Prog Svcs & Projs	Other Program Services & Projects	\$ 3,837,315.30		0.0%		\$ 3,837,315.30
Subtotal - Program Consultant Services & Other Projects		\$ 17,825,314.65	\$ 234,761.29	1.3%	\$ -	\$ 18,060,075.94

Construction Contracts

Project	Firm	Amount Authorized by Board	Board Authorized Modifications		Forecasted Modification Amount	Estimate at Completion (EAC)
			Dollars	%		
GRP Bldg No. 1	Brookstone	\$ 2,009,900.00	\$ (1,227.00)	-0.1%		\$ 2,008,673.00
Bldg No. 1 CMT	Aviles	\$ 48,193.60		0.0%		\$ 48,193.60
Landscape Buffer	KeyScape	\$ 87,255.00		0.0%		\$ 87,255.00
Temp Access Road	Lindsey Construction	\$ 986,431.00	\$ (8,847.15)	-0.9%		\$ 977,583.85
Access Road CMT	Terracon Consultants	\$ 12,842.50		0.0%		\$ 12,842.50
Aqua Texas Sewer	Randy Roan	\$ 516,650.50	\$ 9,106.17	1.8%		\$ 525,756.67
Aqua Texas CMT	Aviles	\$ 31,057.20		0.0%		\$ 31,057.20
Bldg No. 1 Fiber Line	Preferred Technologies	\$ 257,339.65	\$ (26,182.09)	-10.2%		\$ 231,157.56
SWF CMT	Geotest	\$ 1,976,659.00		0.0%		\$ 1,976,659.00
Other	Other Construction Contracts	\$ 481,718.91		0.0%		\$ 481,718.91
Subtotal - Construction Contracts		\$ 6,408,047.36	\$ (27,150.07)	-0.4%	\$ -	\$ 6,380,897.29

Totals

	Amount Authorized by Board	Board Authorized Modifications		Forecasted Modification Amount	Estimate at Completion (EAC)
		Dollars	%		
Subtotal - Surface Water Transmission System	\$ 29,468,102.27	\$ 376,845.09	1.3%	\$ -	\$ 29,844,947.36
Subtotal - Surface Water Facilities	\$ 221,636,087.12	\$ 533,488.00	0.2%	\$ -	\$ 222,169,575.12
Subtotal - Program Consultant Services & Other Projects	\$ 17,825,314.65	\$ 234,761.29	1.3%	\$ -	\$ 18,060,075.94
Subtotal - Construction Contracts	\$ 6,408,047.36	\$ (27,150.07)	-0.4%	\$ -	\$ 6,380,897.29
Total	\$ 275,337,551.40	\$ 1,117,944.31	0.4%	\$ -	\$ 276,455,495.71



Exhibit 12
Land Acquisition Summary
April 2013

Project	Anticipated Number of Easements to Acquire	Easements Acquired This Month	Easements Acquired Total
Transmission System Segment T1	62	5	53
Transmission System Segment T2	2	0	0
Transmission System Segment T3	22	3	4
Transmission System Segment C1	16	1	9
Transmission System Segment C2	77	3	15
Transmission System Segment C3	32	0	16
Transmission System Segment C4	4	0	0
Transmission System Segment W1	32	1	15
Transmission System Segment W2	8	0	0
Transmission System Segment W3	178	2	70
Transmission System Segment W4	7	0	0
Totals:	440	15	182



Exhibit 13

GRP Program Monthly Meeting Log

April 2013

Meeting	Subject of Meeting	Location	Date	Participants
Proposal Opening Transmission Segment W2-A	Proposal Opening	G&A Offices	4/2/2013	W2-A Consulting Team, GRP Program Team, Prospective Proposal Offerers, General Public
Bike Lanes Along Woodlands Routes	Discussion Regarding Bike Lanes	G&A Offices	4/4/2013	SJRA Staff, GRP Staff
SJRA Meeting	Update Regarding GRP Program	Commissioner's Office	4/10/2013	SJRA Staff, GRP Staff, County Commissioners
Pre-Construction Conference Call for Segment Transmission Line T-1	Update Regarding Pre-Construction for Segment Transmission Line T-1	GRP Building 1	4/15/2013	SJRA Staff, GRP Staff, KBR, BGE, Jones & Carter, Terracon and Texas Water Development Board representatives
16-inch WCL from WW33/34 to SH242 and Windsor Lakes / 12-inch Loop Water Line from Harper's Landing to Windsor Lakes - Kick-Off Meeting	Update Regarding WCL and Water Lines	Woodlands Operations Building	4/15/2013	SJRA Staff
Proposal Opening for Transmission Segment T3	Proposal Opening	G&A Offices	4/16/2013	T3 Consulting Team, GRP Program Team, Prospective Proposal Offerers
Construction Committee	Update Regarding Construction Projects	G&A Offices	4/18/2013	Construction Committee, GRP Program Team staff
Montgomery Trace HOA	Update Regarding GRP Program	La Quinta	4/18/2013	SJRA PR Staff and GRP Administrator
Woodlands Township Board of Directors Presentation	Update Regarding GRP Program	Township Building	4/24/2013	SJRA Staff ad GRP Administrator
GRP Review Committee	GRP Items Going Before SJRA Board of Directors	GRP Building 1	4/22/2013	Review Committee, GRP Program Team, General Public



Exhibit 13 (con't)
GRP Program Monthly Meeting Log
April 2013

Meeting	Subject of Meeting	Location	Date	Participants
SJRA Board of Directors	Agenda Related	G&A Offices	4/25/2013	SJRA Board of Directors, GRP Program Team staff, General Public
Land Acquisition Conference Calls	Land Acquisition	GRP Building 1, Andrews Kurth	Weekly	Andrews Kurth, SJRA



EXHIBIT 14
Construction Photos



Raw Water Pump Station Site Tour - April 22, 2013

EXHIBIT 14 (con't)
Construction Photos



Raw Water Pump Station - Workers assemble temporary construction deck supports - April 22, 2013

EXHIBIT 14 (con't)
Construction Photos



Ground Storage Tank No. 2 Site Tour - Baffle walls completed with scaffolding erection for wall placement - April 22, 2013

EXHIBIT 14 (con't)
Construction Photos



Membrane Facilities - April 22, 2013

EXHIBIT 14 (con't)
Construction Photos



Jace Houston and Mitchell Page at Ground Storage tank Site Tour - April 22, 2013



Site work at Ground Storage Tank No. 1 - April 22, 2013

EXHIBIT 14 (con't)
Construction Photos



EXHIBIT 14 (con't)
Construction Photos



Construction Site Tour - April 22, 2013