

# GROUNDWATER REDUCTION PLAN PROGRAM

MONTHLY PROGRESS REPORT - MARCH, 2015





# TABLE OF CONTENTS

<b>Table of Contents</b>	1	<b>4.0 Cost Report and Financial Considerations</b>	12
<b>Acronyms and Definitions</b>	2	4.1 GRP Program and GRP Project CIP Budget(s)	12
<b>1.0 Planning</b>	3	4.2 Financial Reports	12
1.1 Strategic	3	4.3 Invoices/Applications for Payment	13
1.2 Engineering and Construction	3	4.4 Contract Amendments and Change Orders	14
1.3 Meetings	3	4.5 Claims	14
<b>2.0 Project Activities</b>	4	4.6 CIP Cash Flow	14
2.1 Engineering	4	4.7 CIP Budget Estimates at Completion	14
2.2 State Agency Coordination	4	4.7.1 GRP Program	14
2.3 Surface Water Transmission System Project Data	5	4.7.2 GRP Projects	14
2.4 Surface Water Transmission System Construction Progress	9	<b>5.0 Quality Assurance</b>	15
2.5 Surface Water Facility Construction Progress and Project Data	10	5.1 Final Design	15
2.6 Facility Improvements	11	5.2 Pre-Construction	15
<b>3.0 Procurement</b>	12	5.3 Construction	15
3.1 Solicitations	12	<b>6.0 Exhibits</b>	16
3.2 Contract Awards	12	<b>7.0 GRP Program Extensions</b>	54
3.3 Process and Procedures	12	7.1 Engineering	54
3.4 Look Ahead	12		



# ACRONYMS AND DEFINITIONS

## ACRONYMS

CA&I	Construction Administration and Inspection
CCT	Construction Communication Team
CIP	Capital Improvement Project
CM&I	Construction Management and Inspection
CMAR	Construction Manager At Risk
CMT	Construction Materials Testing
CSB / P	Competitive Sealed Bid / Proposal
EA	Environmental Assessment
EAC	Estimate At Completion
FONCS	Fiber Optics Network Communication System
GIS	Geographic Information System
GRP	Groundwater Reduction Plan
GST	Groundwater Storage Tank
HSPS	High Speed Pump Station
LSGCD	Lone Star Groundwater Conservation District
LVGU	Large Volume Groundwater User
NTP	Notice To Proceed
PER	Preliminary Engineering Report
PMP	Program Management Plan
PVC	Polyvinyl Chloride
PSA	Professional Services Agreement
QA	Quality Assurance
RCCP	Reinforced Concrete Cylinder Pipe
RFB / Q / P	Request For Bids / Qualifications / Proposals
RWI / RWPS	Raw Water Intake / Raw Water Pump Station
SJRA	San Jacinto River Authority
SOQ	Statement of Qualifications
SWF	Surface Water Facilities (SWTP, HSPH and RWI)
SWRF	Surface Water Receiving Facilities
SWTP	Surface Water Treatment Plant
TCEQ	Texas Commission on Environmental Quality

## DEFINITIONS

<b>TWDB</b>	Texas Water Development Board
<b>TXDOT</b>	Texas Department of Transportation
<b>WIF</b>	Water Infrastructure Fund
<b>GROUNDWATER REDUCTION PLAN (GRP)</b>	The document developed and filed with the LSGCD indicating SJRA's plan to reduce the permitted 2009 groundwater pumpage of its GRP Participants by 30%. The GRP is administered by the SJRA, including any supplements, revisions, or amendments.
<b>GRP PROGRAM TEAM</b>	SJRA staff, Program Management Consultant (Brown & Gay Engineers, Inc.) staff, and technical consultants working interdependently toward meeting the goals of the Groundwater Reduction Plan.
<b>GRP ADMINISTRATOR</b>	The SJRA General Manager's designee who administers the SJRA Groundwater Reduction Plan and GRP Contract with GRP Participants.
<b>GRP CONTRACT</b>	Contract between the SJRA and a Participant to be included in the SJRA's efforts to meet the surface water conversion requirements mandated by the LSGCD.
<b>GRP EXTENSION PROJECTS</b>	Safe harbor related projects not related to Phase 1, but tracked independently of Phase 1.
<b>JOINT GRP</b>	GRP which is prepared to include (takes into account) LVGUs who have executed a GRP Contract with the SJRA to join the SJRA's GRP. Contracted LVGUs obtain LSGCD groundwater reduction regulation compliance through the SJRA's Joint GRP without preparing and submitting a GRP.
<b>LARGE VOLUME GROUNDWATER USER(S) (LVGU)</b>	Any person or entity that, through a single well or a combination of wells, actually produces or is authorized by permit(s) issued by the LSGCD to produce 10 million gallons or more of groundwater annually on or after January 1, 2008.
<b>PARTICIPANT(S)</b>	Regulated User(s) that enters into and remains subject to a written agreement with the SJRA to be included in the SJRA's GRP and includes the legal successors or assigns of Participant(s).
<b>REGULATED USER(S)</b>	Any public or private entity or person that is or becomes subject to the District Regulatory Plan established by the LSGCD and includes any amendments, revisions or supplements thereto as may be adopted by the LSGCD.
<b>SJRA GRP DIVISION</b>	Division of the SJRA responsible for GRP compliance, and the management, administration, operation and maintenance of the surface water facilities and surface water transmission system.



## 1.0 PLANNING

The GRP Program Team meets regularly for the purposes of setting performance expectations and goals of the GRP Program, identifying the efforts required to achieve these objectives, evaluating the effectiveness of such efforts, and modifying those efforts based upon both internal and external performance evaluations.

### 1.1 STRATEGIC

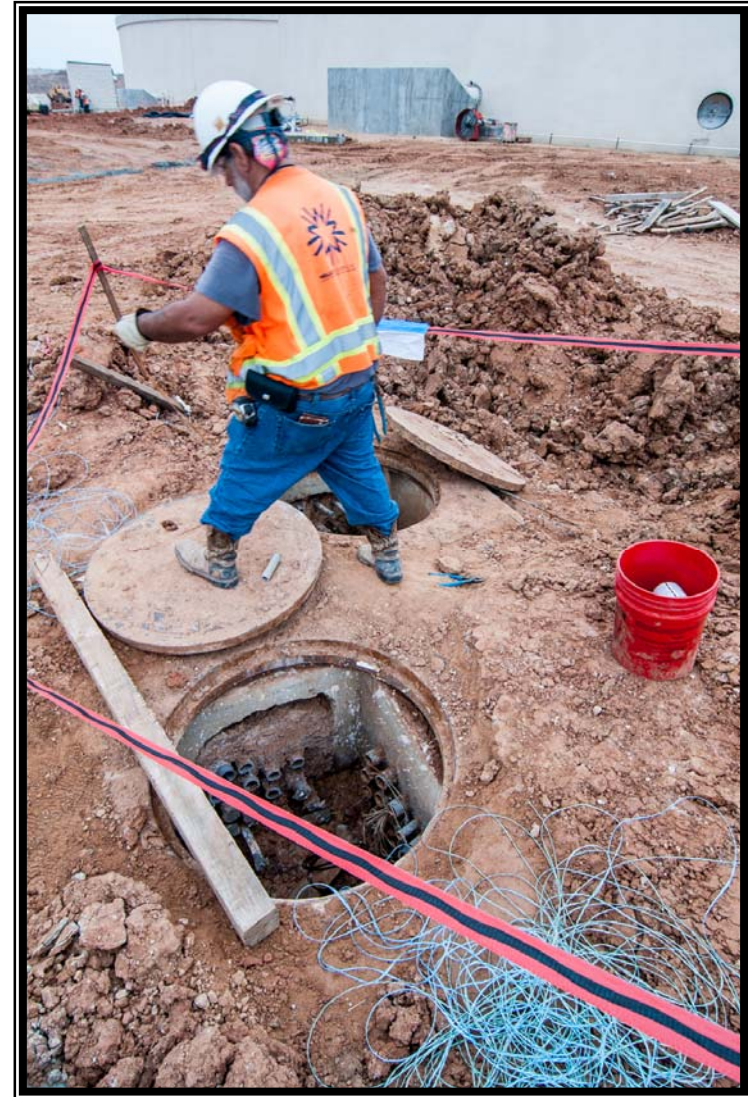
During March, work on the GRP start-up plan continued. GRP staff were in communication with Participants who will be receiving surface water at start-up in order to coordinate activities and assure that lines of communication are effective. In addition, the GRP Program Team continued looking at closing out contracts on construction that has reached final completion. Funds remaining after adjustment of contracts will be reallocated to fund projects such as the W3C extension to MUD 99, permanent access road, and costs associated with system start-up.

### 1.2 ENGINEERING AND CONSTRUCTION

All procurement services for construction proposals for Phase I, with the exception of the permanent access road, have been completed and sixteen transmission line construction contracts have been awarded. The engineering consultants will continue to provide construction phase services by reviewing submittals and requests for information as work proceeds.

### 1.3 MEETINGS

Various meetings continued this month with the GRP Program Team. A listing of these meetings is attached as ***Exhibit 8***.



*Workers pulling wire for the GST aeration system*

## **2.0 PROJECT ACTIVITIES**

Currently, the GRP Program remains on schedule for the delivery of treated surface water to select Joint GRP Participants on or before January 1, 2016. A simplified GRP Program schedule of remaining work can be found in attached **Exhibit 1**.

### **2.1 ENGINEERING**

#### **SURFACE WATER TRANSMISSION SYSTEM**

**Construction Management and Inspection (CM&I)** – The CM&I consultant provided management and inspection services for Transmission Segments T1, T2, T3, W1A, W1B, W2A, W2B, W3A, W3B, W4, C1A, C1B, C2, C3, C4, WRF-N, WRF-S, and the Standpipe.

**Construction Materials Testing Consultant (CMT)** - CMT consultant is currently working with CM&I staff to perform industry standard construction materials testing on remaining projects.

#### **SURFACE WATER FACILITIES**

**Permanent Access Road** - SJRA issued the Request for Proposal (RFP) for the construction contract in March 2015 and anticipate requesting authorization at the May 2015 Board Meeting.

**Construction Administration and Inspection (CA&I)** – The CA&I consultant for the SWF is currently working with the CMAR and SJRA staff to review submittals and RFI's, and provide constant field monitoring and inspection of the systems being installed.

**Construction Materials Testing Consultant (CMT)** - The CMT consultant for the SWF is currently working with the CMAR and CA&I staff to perform industry standard construction materials testing on remaining work.

### **2.2 STATE AGENCY COORDINATION**

The Texas Water Development Board (TWDB) completed the field inspection of the Surface Water Facilities and Transmission Line construction sites on March 31, 2015. TWDB conducted their final site visits for Transmission Line Segments C1A, C4, and W3A. The next scheduled site visits are scheduled to occur on April 24, 2015. SJRA submitted plans and specifications for construction of the permanent surface water plant access road project to

TWDB for review and approval. The agency approved the final close out change order for Transmission Segment C3, allowing for release of retainage to the contractor.



*Employees observing construction worker flushing transmission lines*



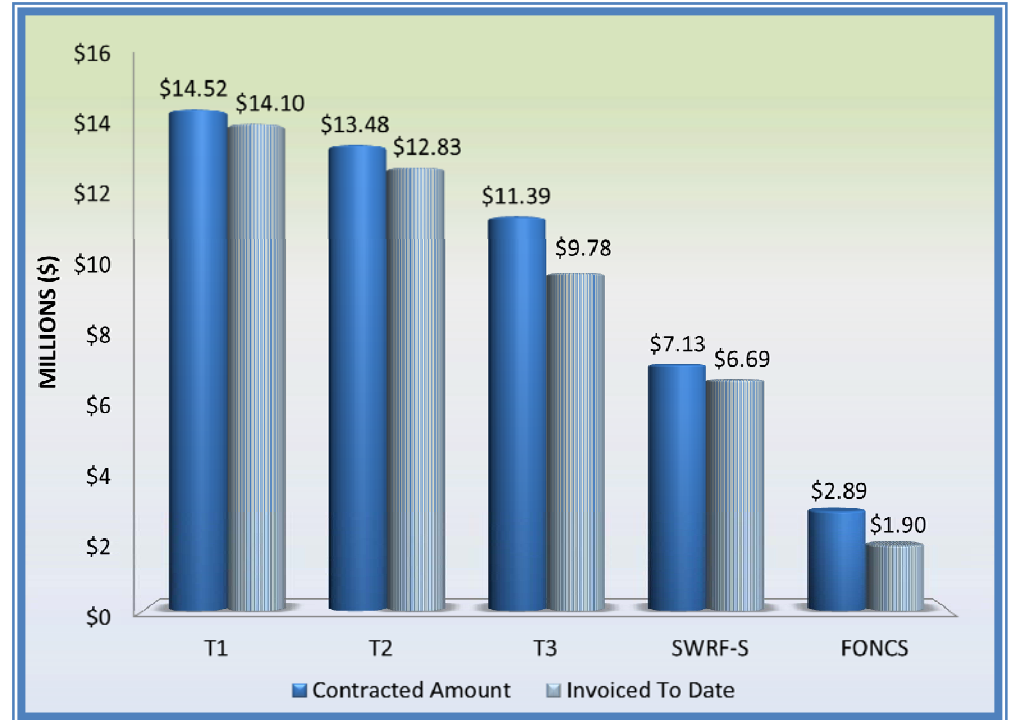
*Workers overlooking the installation of a raw waterline at the Surface Water Treatment Plant*

## 2.0 PROJECT ACTIVITIES (CONTINUED)

### 2.3 SURFACE WATER TRANSMISSION SYSTEM PROJECT DATA

The month of March concluded with the installation of approximately 272,729 feet or 51.6 miles of various sized concrete coated steel pipe, PVC pipe, and bar wrapped concrete mortar pipe along the majority of the transmission line segments. This represents approximately 98% of the total planned pipe to be installed throughout Montgomery County on or before January 1, 2016. The following graphs and charts show the progress of Transmission Line Segments T1, T2, T3, W1A, W1B, W2A, W2B, W3A, W3B, W3D, W4, C1A, C1B, C2, C3, C4, Surface Water Transmission North Water Receiving Facilities (SWRF-N), Surface Water Transmission South Water Receiving Facilities (SWRF-S), Standpipe, and Fiber Optics Network Communication System (FONCS) thus far.

*Wet working conditions filled the work site*



Surface Water Transmission System Total	Progress To Date
Total Contracted Amount	\$150,623,811.79
Total Invoiced To Date	\$137,446,258.61
Total % Complete Based on Invoice Amount	91%

Segment	T1	T2	T3	SWRF-S	FONCS
Contracted Amount	\$14,521,937.14	\$13,475,718.33	\$11,393,193.97	\$7,127,383.00	\$2,885,432.35
Invoiced To Date	\$14,097,492.64	\$12,825,963.20	\$9,781,407.42	\$6,692,321.00	\$1,902,670.08
% Complete	97%	95%	86%	94%	66%

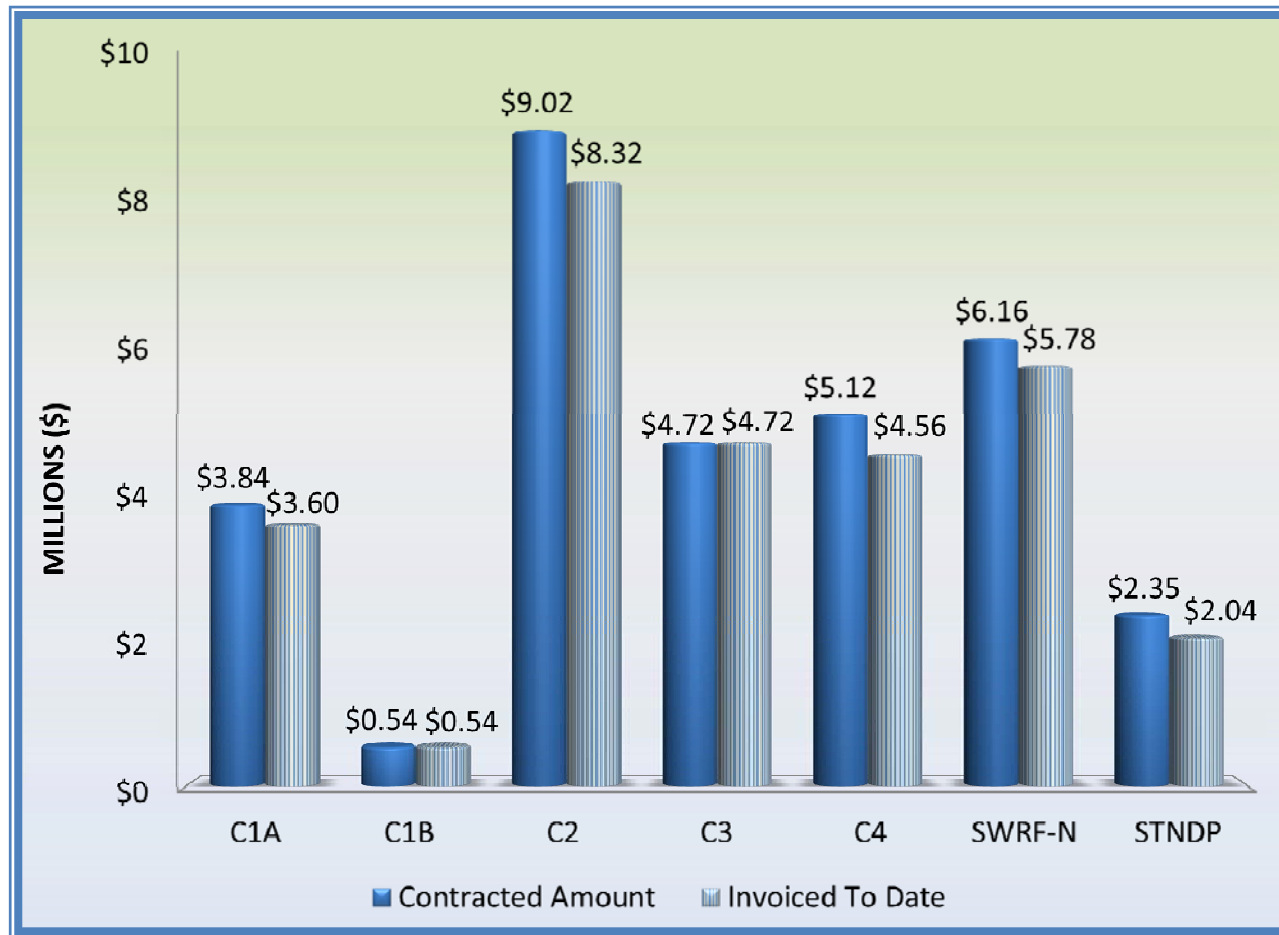
## 2.0 PROJECT ACTIVITIES (CONTINUED)



Segment	W1A	W1B	W2A	W2B	W3A	W3B	W3D	W4
Contracted Amount	\$8,222,000.50	\$7,213,544.50	\$16,340,258.02	\$16,161,600.00	\$7,880,207.50	\$8,124,485.50	\$1,840,986.00	\$3,656,604.23
Invoiced To Date	\$7,740,806.66	\$6,754,717.01	\$15,272,089.82	\$14,875,816.49	\$7,532,196.60	\$7,125,254.00	\$237,428.00	\$3,254,500.22
% Complete	94%	94%	93%	92%	96%	88%	13%	89%

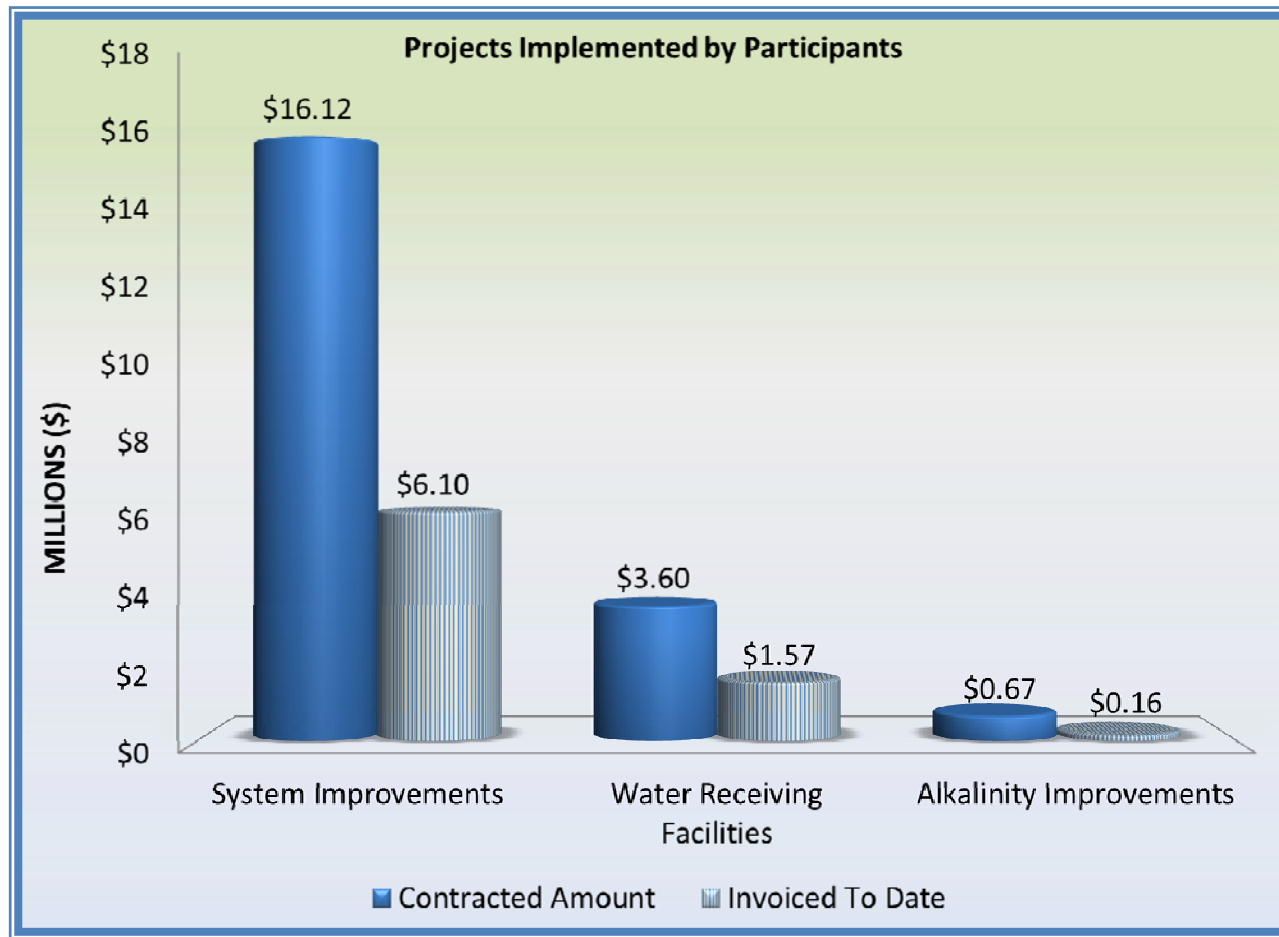


## 2.0 PROJECT ACTIVITIES (CONTINUED)



Segment	C1A	C1B	C2	C3	C4	SWRF-N	STANDPIPE
Contracted Amount	\$3,869,767.26	\$544,393.60	\$9,015,577.30	\$4,720,966.14	\$5,115,396.90	\$6,160,184.55	\$2,354,175.00
Invoiced To Date	\$3,596,844.75	\$544,393.60	\$8,324,587.00	\$4,720,966.14	\$4,556,866.03	\$5,781,672.60	\$2,044,418.00
% Complete	93%	100%	92%	100%	100%	94%	87%

## 2.0 PROJECT ACTIVITIES (CONTINUED)



Project	System Improvements	Water Receiving Facilities	Alkalinity Improvements
Contracted Amount	\$16,117,794.31	\$3,603,916.98	\$674,997.00
Invoiced To Date	\$6,103,535.59	\$1,571,947.10	\$164,669.00
% Complete	38%	44%	24%

## 2.0 PROJECT ACTIVITIES (CONTINUED)

### 2.4 SURFACE WATER TRANSMISSION SYSTEM CONSTRUCTION PROGRESS

Significant progress continues to be made each month with regard to pipe installation on each of the sixteen Surface Water Transmission Line Segments. The chart below represents the overall pipe installation statistics through the month of March.

Transmission Line System Pipe Installation Statistics to Date	
Total Piping Installed to Date	51.6 miles
Total % of Pipe Installed to Date	98%

**Segment T1** - Contractor continued site restoration and addressing substantial completion punchlist items. Contractor removed filter fabric fence.

**Segment T2** - Contractor continued to address substantial completion punchlist items.

**Segment T3** - Contractor finished the pipe installation at Lake Creek by installing the final 102 feet of 54-inch pipe. (See Exhibit 10)

**Segment W3A** - Contractor continued site restoration along South Park Road and Westridge Drive by installing concrete collars around manholes and valve boxes. Contractor completed disinfection. Final completion walk through scheduled and Contractor began addressing final completion punchlist items.

**Segment W3B** - Contractor completed the tunnel under the playground at Richards Road and North Head Drive.

**Segment W3D** - Contractor installed approximately 45 feet of 12-inch waterline pipe under Robinson Road to Oak Ridge North Water Plant No. 1 by horizontal directional drill (HDD). Contractor installed approximately 889 feet of 12-inch waterline by HDD along Robinson Road from Oak Ridge North Water Plant No. 1 to Maplewood Drive. Contractor performed site restoration in areas where excavation took place. (See Exhibit 10)

**Segment C2** - Contractor completed the 12-inch waterline tie-in at Longmire Road south of Loop 336, which completed Segment C2.

**Standpipe** - Contractor completed and inspected the tank liner; it met specifications. Wire terminations were completed. Site grading continued around the site. Instrumentation and terminations were completed and the level indicator on the top of the tank calibrated. (See Exhibit 11)

**Fiber Optic Communications System** - Contractor completed SCADA trunk along Segment W2B. Contractor installed fiber optic cable from SJRA Water Plant No. 1 to approximately Blue Fox Road. Contractor completed the rough-in installation of W3A fiber optic cable and began installing fiber optic ground box appurtenances. (See Exhibit 13)

### **SURFACE WATER RECEIVING FACILITIES**

**Surface Water Receiving Facilities - North** - No new activity. Awaiting the delivery of water from the Surface Water Facility.

**Surface Water Receiving Facilities - South** - Contractor continued to address substantial completion punchlist items. Electrical inspector completed testing of all Surface Water Receiving Facilities—South.



## 2.0 PROJECT ACTIVITIES (CONTINUED)



*Instrumentation at the Raw Water Intake Facility*

## 2.5 SURFACE WATER FACILITY CONSTRUCTION PROGRESS AND PROJECT DATA

**Raw Water Intake** - Contractor continued to install handrails above the control room. Vibration testing was successfully performed on Raw Water Pump No. 1, No. 2, and No. 3. Lighting and power was trimmed and control wiring installed.

**Surface Water Treatment Plant** - Construction activities continued at the Operations, Chemical, Power Supply, Generator, Pretreatment, Membrane, Backwash Equalization, Process Water Recovery Basin, Belt Filter Press Building, Blower Building, and Granular Activated Carbon (GAC) facilities. Testing and commissioning the electrical and mechanical equipment continues at the various facilities. Contractor continued to install valves and pump meters. Contractor continued to test various piping, install conduit, and to pull wire. At the Operations Building, the contractor

continued addressing punchlist items. The contractor installed handrails and placed the concrete curb. The wheel chair ramp was painted.

**High Service Pump Station** - Contractor performed High Service Pump No. 3 start-up test and installed air compressor pipe. Contractor continued to install conduit and pull wire for the pump room. Pump motor vibration monitors were installed.

**Ground Storage Tanks** - Contractor continued to install pull boxes and conduit. Wire was pulled for the tank instruments and for the power on the tank roof. Pressure relief valve conduit, terminal boxes, and supports were installed at the Pressure Relief Valve Station.

**Site Work** - Contractor continued to filled the raw waterline between the Raw Water Intake and Pretreatment Facility with test water. At the Raw Water Meter Station, the Contractor placed and compacted foundation cement stabilized sand and installed air release valves. Installation of chemical trench and chemical pipe continued. Light poles were installed at the Operations Building. Contractor continued to pull fiber optic cable through the data duct bank at the Pretreatment Facility.

The chart below represents Surface Water Facilities progress through the month of March.

Name of Project	Contracted	Invoiced To Date	% Complete Based
Surface Water	\$190,704,740.00	\$173,430,125.00	91%

## **2.0 PROJECT ACTIVITIES (CONTINUED)**

### **2.6 FACILITY IMPROVEMENTS**

Various projects are being implemented by GRP Participants on behalf of the GRP. These include system improvements that are required due to the delivery of surface water to the Participants' water receiving facilities and improvements at their wastewater treatment plants to address differences in alkalinity of surface water based wastewater.

#### **SYSTEM IMPROVEMENTS**

**Conroe Water Distribution** - A Supplemental Agreement was approved on November 11, 2013 whereby the GRP will reimburse the City of Conroe for water system improvements needed for the distribution of surface water throughout the City's water system.

**16-inch Well Collection Line from Woodlands WW9 and WW10** - Substantial completion walkthrough completed and punchlist items prepared. Final completion walkthrough scheduled.

**College Park 16-inch Well Collection Line and 12-inch Water Line Loop** - Substantial completion punchlist items completed. Final completion walkthrough completed; final closeout documents being processed.

#### **WATER RECEIVING FACILITIES**

**Oak Ridge North Water Plant** - The flow control valve submittal was returned to the contractor and the valve is on order for delivery in May. Contractor began addressing comments on the flow control valve panel. The City of Oak Ridge North's portion of the project is complete.

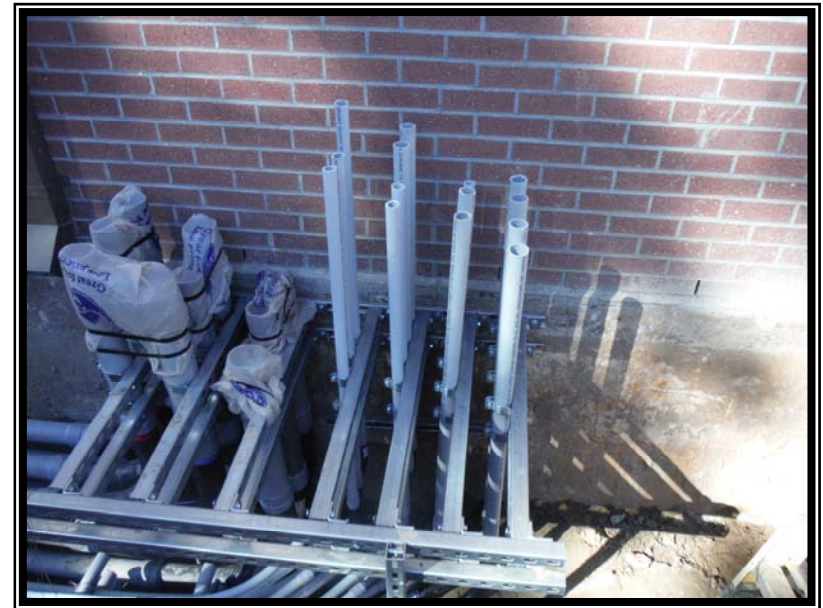
**Rayford Road MUD Water Plants** - Original contract work neared completion. Participant awaited the arrival of the remote terminal unit (RTU) and chlorine booster pump panels.

**Mid-South Water Plant** - Contractor completed electrical underground work connecting the water receiving facility to the existing control building and the conduit connecting the GST. Contractor completed 24-inch drain box and line extending to the existing retention pond. Sidewalks and housekeeping pads were formed for concrete.

### **ALKALINITY IMPROVEMENTS**

**Woodlands Alkalinity Improvements** - The construction contract began advertising on March 6, 2015. A preproposal meeting was held on March 25, 2015. Sealed proposals are due April 2, 2015. It is anticipated that the construction contract will be considered for authorization at the SJRA Board meeting in May 2015.

**Southern Montgomery County (SMC) MUD** - A Supplemental Agreement with SMC MUD was approved by the SJRA Board on October 30, 2014. Preliminary design neared completion. The engineer worked on the engineering report, site drawings, and construction details. Electrical design continued.



***Electrical upgrade to Water Plant No. 3 in the Woodlands Division***

## **3.0 PROCUREMENT**

### **3.1 SOLICITATIONS**

The following advertisements for solicitations occurred for March:

- RFB 15-030 Access Road

### **3.2 CONTRACTS/AGREEMENTS/WORK ORDER APPROVALS**

The following contracts/agreements/work orders were approved in March:

- Work Order No. 5 for Construction Materials Testing during Construction of the Surface Water Facility for the GRP Program

### **3.3 PROCESS AND PROCEDURES**

The GRP Program will utilize traditional procurement methods for consultant services and alternative project delivery methods in the procurement of contractor services, if those services are required.

### **3.4 LOOK AHEAD**

The following list provides a very general look ahead at known and anticipated GRP Program professional services and construction contractor solicitations, contract awards, agreements, and/or contract/work order amendments. Solicitations may be combined, modified, or canceled, or time frames may be modified as deemed necessary.

- Construction contract for access road for the GRP Program
- Work Order No. 7 for Construction Phase Services during construction of access road
- Work Order No. 6 for Construction Materials Testing during construction of access road
- Second Supplemental Agreement with the City of Conroe (Alkalinity)
- Interlocal Agreement with The Woodlands Township for reforestation
- Interlocal Agreement with Montgomery County for land acquisition

## **4.0 COST REPORT AND FINANCIAL CONSIDERATIONS**

### **4.1 GRP PROGRAM AND GRP PROJECT CIP BUDGET(S)**

Through this month the GRP Program remains under its construction cost

estimate of \$500,000,000 and forecasts continue to indicate it will be completed under budget (see also subsection 4.6 and **Exhibit 2**). A summary of the GRP Program's CIP budget and cost considerations as reported to the GRP Review Committee and the SJRA Board of Directors is provided as attached **Exhibit 2**.

A summary of the SJRA GRP Division's Fiscal Year 2015 operating budget (revenue and expenditures) for the month of March is provided as **Exhibit 7**. The budget includes all normal and customary expenses for operating a utility-based, non-profit business, including debt service, and is developed annually for approval by the SJRA Board of Directors.

The SJRA Board of Directors has authorized bond funding for the GRP Program in the amount of \$552,250,358.49 (Net \$479,746,021.87); see also **Exhibit 4**. This funding allows the SJRA to secure all of the resources required to perform professional services, construction services, and procure long lead time equipment during the design phase of the GRP Program.

### **4.2 FINANCIAL REPORTS**

**Exhibit 5** illustrates the funding sources presently applied towards the GRP Program CIP budget.

- 1.) TWDB Water Infrastructure Fund (WIF)
- 2.) The sale of open market Special Project Revenue Bonds, Series 2011
- 3.) TWDB Dfund, Series 2011A
- 4.) TWDB Dfund, Series 2012
- 5.) TWDB Dfund, Series 2012A
- 6.) TWDB Dfund, Series 2013
- 7.) Operating Cash

Contracted commitments are summarized in Table 4.1 for the month of March. The GRP Program's funding and forecasted expenditures are further detailed in attached **Exhibits 2, 3, and 4**.

Please note that financial reports do not include investment income.

## 4.0 COST REPORT AND FINANCIAL CONSIDERATIONS

### 4.3 INVOICES/APPLICATIONS FOR PAYMENT

The tables below represents the GRP Program Consultant Invoices and/or Construction Contractor Applications for Payment paid through the end of the report month (Item F).

Table 4.1 - GRP Program Funding and Contracted Commitments Summary			
	Previous 2/28/2015	March 2015 Activity	Year to Date (Thru 3/31/15)
A. Approved Funding	552,640,374.07	-	552,640,374.07
B. Available Funding After Costs	480,136,037.45	-	480,136,037.45
C. Approved Contracts			
Phase I	470,890,598.58	3,380,266.18	474,270,864.76
Extensions	1,069,835.00	-	1,069,835.00
D. Project Close Out			
Phase I	(1,567,336.07)	(302,566.51)	(1,869,902.58)
Extensions	-	-	-
E. Uncontracted Funding	9,742,939.94	(3,077,699.67)	6,665,240.27
F. Invoices Paid *			
Phase I	394,540,137.66	8,120,521.52	402,660,659.18
Extensions	273,695.43	21,451.18	295,146.61
G. Remaining Funds **	85,322,204.36	(8,141,972.70)	77,180,231.66

\*Invoices Paid -Figures reflect actual funds paid out as of period end dates noted.

\*\*Remaining Funds-Excludes net investment income



*Worker at the Pretreatment Facility installing electrical wiring*

## 4.0 COST REPORT AND FINANCIAL CONSIDERATIONS (CONTINUED)

### 4.4 CONTRACT AMENDMENTS AND CHANGE ORDERS

Each of the GRP Program contracts, agreements, and work orders listed in Section 3.2 were presented at the GRP Review Committee and the SJRA Board of Directors meetings in March. The following items were authorized by the SJRA Board of Directors for execution by the SJRA General Manager.

- Change Order No. 1 for (\$431,781.77) with BRH-Garver Construction, L.P. to close out construction contract for Surface Water Transmission Line, Segment C4

### 4.5 CLAIMS

If and when claims are received, they will be addressed by the GRP Program Team. SJRA reserves the right to withhold certain claims information that is subject to ongoing investigation, pending or threatened litigation, or covered by attorney-client privilege.

### 4.6 CIP CASH FLOW

The GRP Program CIP cash flow through calendar year 2015 reflects known expenditures through this month as seen in Table 4.1. Estimates for future expenditures are included in *Exhibit 2*. All active and currently identified future GRP Program projects and initiatives are included in the cash flow. A graph of forecasted monthly expenditures from the referenced cash flow is attached as *Exhibit 3*.

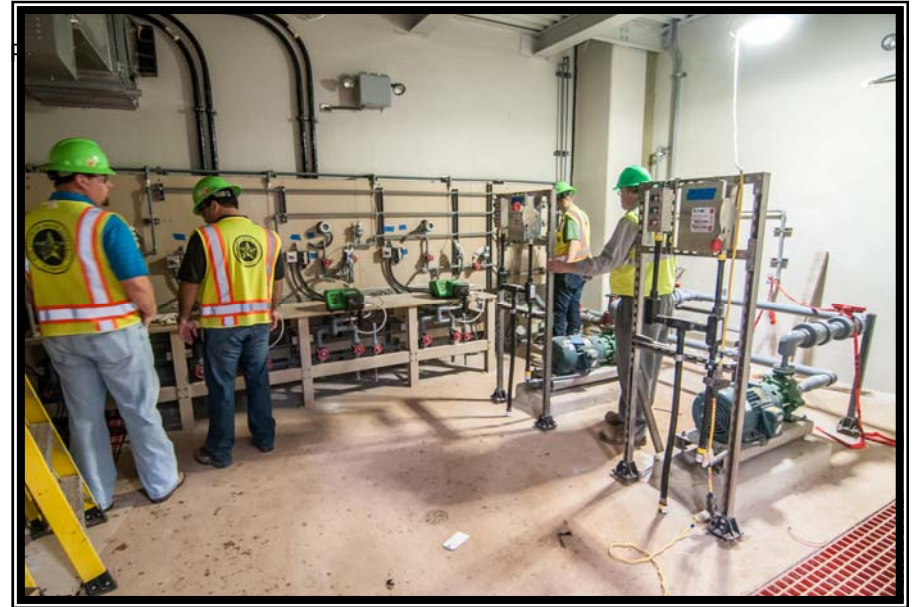
### 4.7 CIP BUDGET ESTIMATES AT COMPLETION

#### 4.7.1 GRP Program

The **total gross funds** (including capitalized interest) required to execute Phase I of the GRP Program are currently estimated at \$564,335,358.49. Additionally, all current GRP Program contracts, including their respective SJRA Board of Director's approved budgeted amounts are listed in *Exhibit 6*.

#### 4.7.2 GRP Projects

The GRP Program projects remained within their approved contract budgets this month. *Exhibit 6* indicates each active GRP Program project and GRP



*Employees observing chemical metering pumps at the  
Ground Storage Tanks Aeration Building*



## 5.0 QUALITY ASSURANCE

### 5.1 FINAL DESIGN

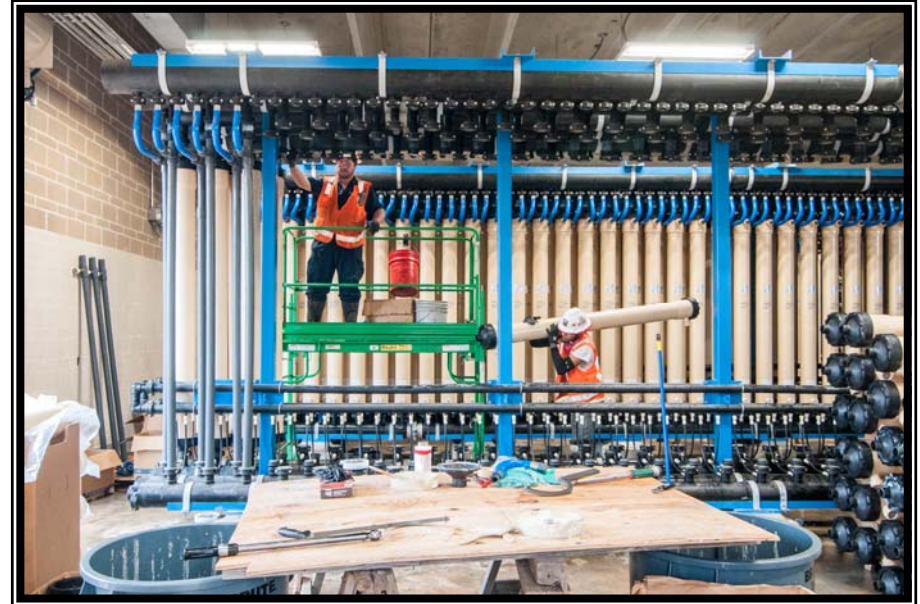
Final design is complete for Surface Water Treatment Plant, Transmission Lines, Standpipe, Fiber Optic Communications Network, and Water Receiving Facilities. Design of permanent access road is underway and the site landscaping will occur in the future.

### 5.2 PRE-CONSTRUCTION

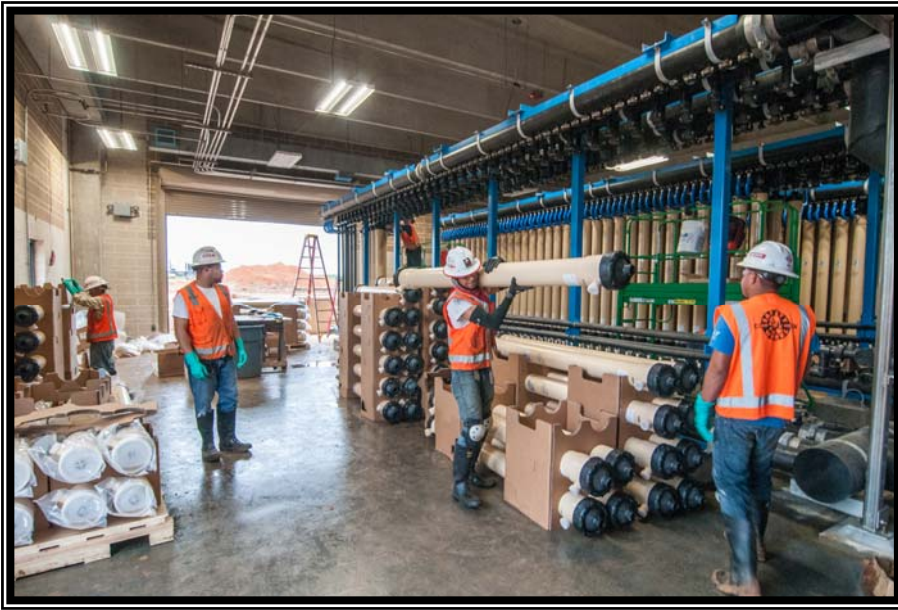
There were no pre-construction meetings held this month.

### 5.3 CONSTRUCTION

Quality Assurance efforts by SJRA construction inspectors, as well as the CA&I consultant continued this month on the SWF project. Virtually every building on the SWF project site is progressing timely toward meeting the established SWF substantial completion date. Quality Assurance efforts include regular visits to the project site to monitor and document observed progress. Similar Quality Assurance efforts by SJRA construction inspectors and the CM&I consultant continued this month on the transmission lines.



*Left, Above, and Bottom: Workers preparing to install membrane cartridges*



## 6.0 EXHIBITS

**Exhibit 1**—GRP Program Schedule

**Exhibit 2**—GRP Program Estimate-At-Completion

**Exhibit 3**—GRP Program Monthly Forecasted Expenditures

**Exhibit 4**—GRP Program Fund Data

**Exhibit 5**—Monthly GRP Program Funding Report

**Exhibit 6**—GRP Program Current Authorizations

**Exhibit 7**—GRP Schedule of Revenues & Expenses—Actual & Budget

**Exhibit 8**—GRP Program Monthly Meeting Log

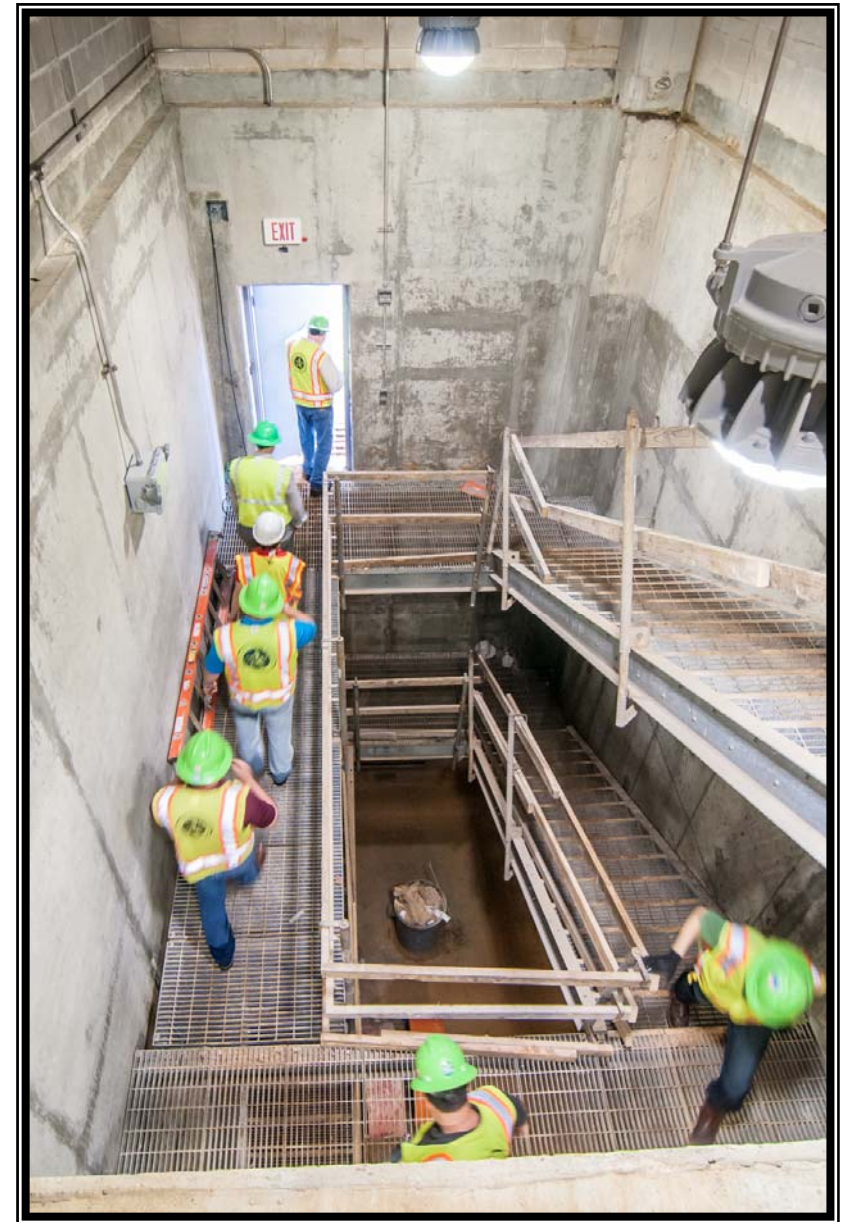
**Exhibit 9**—Surface Water Facilities (SWF) Construction Photos

**Exhibit 10**—Transmission Line System Construction Photos

**Exhibit 11**—Surface Water Standpipe Construction Photos

**Exhibit 12**—Facility Improvements by GRP Participants Photos

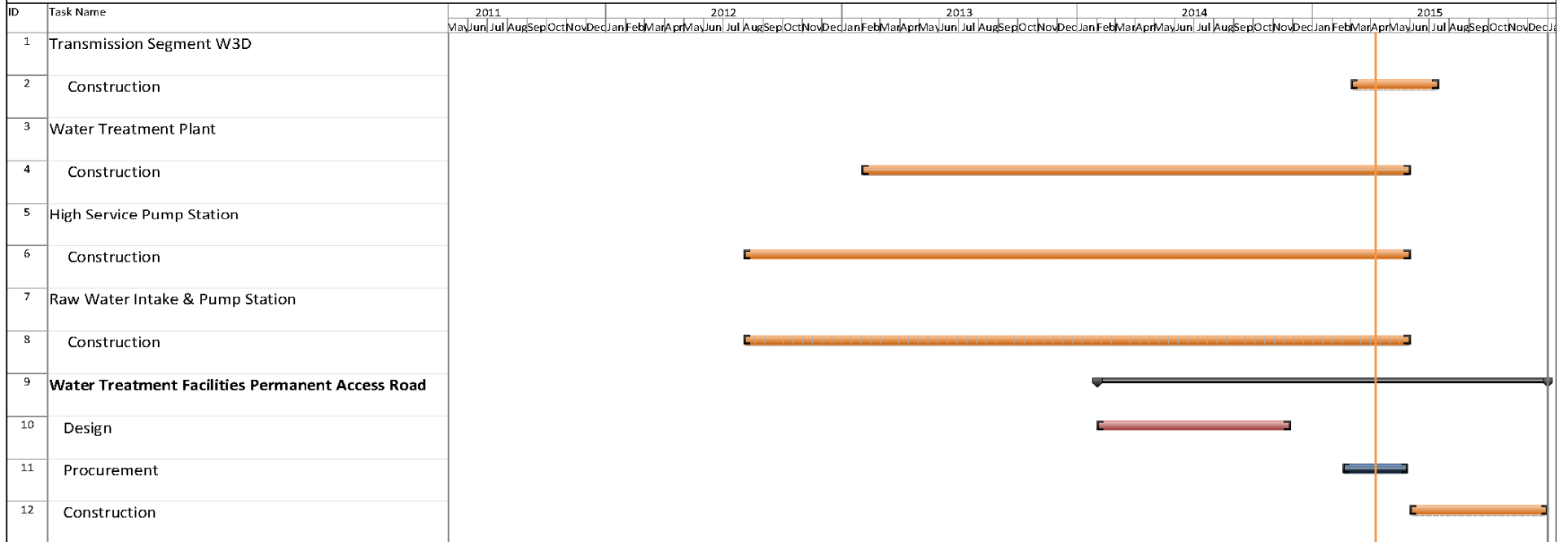
**Exhibit 13**—Fiber Optic Network Communication System



*Left: Delivery of Granular Activated Carbon (GAC) to the plant site*

*Above: Employees exiting stairway at the GAC Building*

## Exhibit 1 - GRP Program Schedule



## Exhibit 2

### GRP Program Estimate-At-Completion as of March 31, 2015

SERVICES	ESTIMATE-AT-COMPLETION
<b>Pre-Engineering Phase Services</b>	<b>\$ 4,696,451</b>
(GRP Development, Environmental Studies, Pilot Plant, Surface Water Treatment Plant Site Survey)	
<b>Engineering Phase Services</b>	<b>\$ 45,232,596</b>
(Planning, Preliminary Engineering, Final Engineering, Geotechnical, Survey, Metes & Bounds, Subsurface Utility Investigation, Environmental)	
<b>Construction Phase Services</b>	<b>\$ 29,445,014</b>
(Engineering Services During Construction, Construction Management & Inspection [Transmission System], Construction Administration & Inspection [SWF], Material Testing)	
<b>Construction</b>	<b>\$ 386,600,648</b>
(Surface Water Transmission System, Raw Water Intake and Pump Station, Surface Water Treatment Plant, High Service Pump Station and Ground Storage Tanks, Surface Water Receiving Facilities, Infrastructure, Buildings, Roadways, Site Security, Access Roadways)	
Transmission Segment C1 - Construction	\$ 4,382,077
Transmission Segment C2 - Construction	\$ 9,015,577
Transmission Segment C3 - Construction	\$ 4,720,966
Transmission Segment C4 - Construction	\$ 5,115,397
Transmission Segment T1 - Construction	\$ 14,521,937
Transmission Segment T2 - Construction	\$ 13,475,718
Transmission Segment T3 - Construction	\$ 11,593,194
Transmission Segment W1 - Construction	\$ 15,435,545
Transmission Segment W2 - Construction	\$ 32,501,858
Transmission Segment W3 - Construction	\$ 16,249,924
Transmission Segment W4 - Construction	\$ 3,656,604
Transmission System Standpipe	\$ 2,354,175
Receiving Facilities - Construction	\$ 15,212,449
Surface Water Facilities CMAR (GMP)	\$ 190,704,740
Transmission System Fiber Optic - Construction	\$ 2,985,432
Permanent Access Roadway Construction	\$ 7,621,690
Building No. 1; Access Road; Vegetative Buffer; Construction Materials Testing; SWF Site Vegetation Management; Sanitary Sewer/Access Rd. Relocation	\$ 4,469,037
Other Offsite Construction (Transmission Line Utility Relocations, Receiving Facility Improvements)	\$ 30,059,962
Non-Project Specific Contingency	\$ 2,524,365
<b>Program Management</b>	<b>\$ 10,990,772</b>
(GRP Program Management, Survey, Geotechnical, Transient, Corrosion, Legal Consultants)	
<b>Land Acquisition</b>	<b>\$ 13,539,644</b>
(Legal, Appraisal, Title Research, Land Acquisition Consultants) <sup>(1)</sup>	
<b>Total <sup>(2)</sup>:</b>	<b>\$ 490,505,124</b>

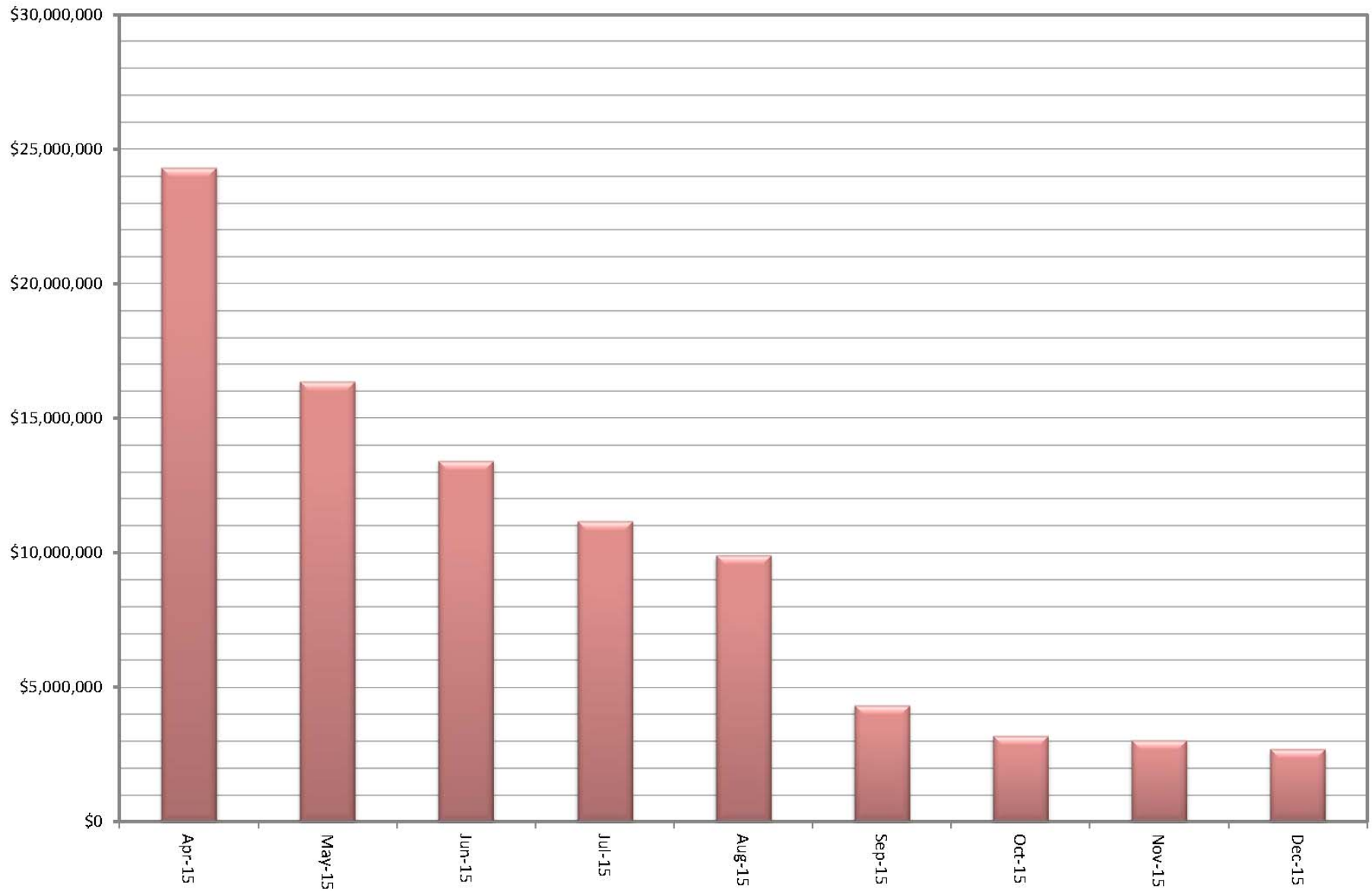
<sup>(1)</sup> Includes revisions to land acquisition cost estimates, land cost, and recategorizing of contingency.

<sup>(2)</sup> Bond issuance costs are not included.



### Exhibit 3

#### GRP Program Monthly Forecasted Expenditures as of March 31, 2015



## Exhibit 4

### GRP Program Fund Data as of March 31, 2015

TWDB WIF Bond Issue	\$ 21,500,000.00	.854% - 2.706%	\$ 470,337.08	\$ -	\$ -	\$ 21,029,662.92
Open Market Bond Issue (Series 2011)	\$ 83,430,358.49	3% - 5.25%	\$ 2,049,764.39	\$ 7,858,241.52	\$ -	\$ 73,522,352.58
TWDB DFund Series 2011A	\$ 67,470,000.00	1.22% - 4.97%	\$ 751,195.33	\$ 5,166,233.00	\$ 3,859,151.00	\$ 57,693,420.67
TWDB DFund Series 2012	\$ 175,000,000.00	1.17% - 4.62%	\$ 971,769.13	\$ 12,869,175.00	\$ -	\$ 161,159,055.87
TWDB DFund Series 2012A	\$ 165,000,000.00	1.26% - 4.62%	\$ 952,269.99	\$ 14,139,669.00	\$ 16,500,000.00	\$ 133,408,061.01
TWDB Dfund Series 2013	\$ 39,850,000.00	4.50%	\$ 628,750.00	\$ 3,214,292.00	\$ 3,073,489.18	\$ 32,933,468.82
<b>Subtotal Approved Amounts</b>	<b>\$ 552,250,358.49</b>		<b>\$ 5,824,085.92</b>	<b>\$ 43,247,610.52</b>	<b>\$ 23,432,640.18</b>	<b>\$ 479,746,021.87</b>
Future Series 2015 (Est.)	\$ 12,085,000.00	4.54%	\$ 321,200.00	\$ 1,004,698.00	\$ -	\$ 10,759,102.00
<b>Subtotal Future Amounts</b>	<b>\$ 12,085,000.00</b>		<b>\$ 321,200.00</b>	<b>\$ 1,004,698.00</b>	<b>\$ -</b>	<b>\$ 10,759,102.00</b>
<b>Totals</b>	<b>\$ 564,335,358.49</b>		<b>\$ 6,145,285.92</b>	<b>\$ 44,252,308.52</b>	<b>\$ 23,432,640.18</b>	<b>\$ 479,746,021.87</b>

Notes:

1. These values do not include investment income.
2. Green items are estimates only.
3. Series 2011 bond costs include \$681,132.45 for bond insurance and \$459,709.50 for underwriter's discount.



# Exhibit 5

## Monthly GRP Program Funding Report

### Fiscal Year 2015

### Through March 31, 2015

	TWDB WIF Bond Issue	Open Market Bond Issue (Series 2011)	TWDB Dfund (Series 2011A)	TWDB Dfund (Series 2012)	TWDB Dfund (Series 2012A)	TWDB Dfund (Series 2013)	Operating (Cash)	Contributions from MUDs	Totals
<b>A. Program Budget</b>									
Bond Issue Amount	\$ 21,500,000.00	\$ 83,430,358.49	\$ 67,470,000.00	\$ 175,000,000.00	\$ 165,000,000.00	\$ 39,850,000.00			\$ 552,250,358.49
Operating Funds Commitment							\$ 96,015.58		\$ 96,015.58
Contributions from MUDs								\$ 294,000.00	\$ 294,000.00
<b>Total Investment</b>	<b>\$ 21,500,000.00</b>	<b>\$ 83,430,358.49</b>	<b>\$ 67,470,000.00</b>	<b>\$ 175,000,000.00</b>	<b>\$ 165,000,000.00</b>	<b>\$ 39,850,000.00</b>	<b>\$ 96,015.58</b>	<b>\$ 294,000.00</b>	<b>\$ 552,640,374.07</b>
<b>B. Contracted Costs</b>									
<b>Phase I</b>									
Contracts Completed	\$ 20,355,197.84	\$ 27,280,382.21	\$ 13,983,598.20	\$ -	\$ 7,661,089.10	\$ 3,721,564.70	\$ 14,407.80	\$ -	\$ 73,016,239.85
Current Contract Values	\$ 655,944.00	\$ 32,989,131.39	\$ 42,624,257.46	\$ 161,159,055.87	\$ 123,237,657.71	\$ 28,763,182.48	\$ 81,607.78	\$ -	\$ 389,510,836.69
Change Orders	\$ -	\$ 8,631,994.12	\$ 1,010,780.46	\$ -	\$ 2,110,782.44	\$ (9,768.80)	\$ -	\$ -	\$ 11,743,788.22
Project Close Out	\$ (354,198.43)	\$ (986,180.24)	\$ (213,523.38)	\$ -	\$ (315,975.38)	\$ (25.15)	\$ -	\$ -	\$ (1,869,902.58)
<b>Phase I Total:</b>	<b>\$ 20,656,943.41</b>	<b>\$ 67,915,327.48</b>	<b>\$ 57,405,112.74</b>	<b>\$ 161,159,055.87</b>	<b>\$ 132,693,553.87</b>	<b>\$ 32,474,953.23</b>	<b>\$ 96,015.58</b>	<b>\$ -</b>	<b>\$ 472,400,962.18</b>
<b>Extensions</b>									
Contracts Completed	\$ -	\$ 10,175.00	\$ -	\$ -	\$ -	\$ -	\$ -	\$ -	\$ 10,175.00
Current Contract Values	\$ -	\$ 1,059,660.00	\$ -	\$ -	\$ -	\$ -	\$ -	\$ -	\$ 1,059,660.00
Change Orders	\$ -	\$ -	\$ -	\$ -	\$ -	\$ -	\$ -	\$ -	\$ -
Project Close Out	\$ -	\$ -	\$ -	\$ -	\$ -	\$ -	\$ -	\$ -	\$ -
<b>Extensions Total:</b>	<b>\$ -</b>	<b>\$ 1,069,835.00</b>	<b>\$ -</b>	<b>\$ -</b>	<b>\$ -</b>	<b>\$ -</b>	<b>\$ -</b>	<b>\$ -</b>	<b>\$ 1,069,835.00</b>
<b>C. Expenditures</b>									
<b>Phase I</b>									
Paid Previous Fiscal Years	\$ 20,599,416.62	\$ 49,618,248.03	\$ 40,595,829.88	\$ 109,374,040.69	\$ 91,422,085.04	\$ 12,922,461.97	\$ 84,942.42	\$ -	\$ 324,617,024.65
Paid Current Fiscal Year	\$ 3,577.50	\$ 5,605,354.26	\$ 10,131,705.11	\$ 28,250,176.08	\$ 21,323,298.32	\$ 12,724,382.35	\$ 5,140.91	\$ -	\$ 78,043,634.53
<b>Phase I Total:</b>	<b>\$ 20,602,994.12</b>	<b>\$ 55,223,602.29</b>	<b>\$ 50,727,534.99</b>	<b>\$ 137,624,216.77</b>	<b>\$ 112,745,383.36</b>	<b>\$ 25,646,844.32</b>	<b>\$ 90,083.33</b>	<b>\$ -</b>	<b>\$ 402,660,659.18</b>
<b>Extensions</b>									
Paid Previous Fiscal Years	\$ -	\$ 172,033.34	\$ -	\$ -	\$ -	\$ -	\$ -	\$ -	\$ 172,033.34
Paid Current Fiscal Year	\$ -	\$ 123,113.27	\$ -	\$ -	\$ -	\$ -	\$ -	\$ -	\$ 123,113.27
<b>Extensions Total:</b>	<b>\$ -</b>	<b>\$ 295,146.61</b>	<b>\$ -</b>	<b>\$ -</b>	<b>\$ -</b>	<b>\$ -</b>	<b>\$ -</b>	<b>\$ -</b>	<b>\$ 295,146.61</b>
Issuance Costs	\$ 470,337.08	\$ 2,049,764.39	\$ 751,195.33	\$ 971,769.13	\$ 952,269.99	\$ 628,750.00	\$ -	\$ -	\$ 5,824,085.92
Debt Service Reserve Fund	\$ -	\$ -	\$ 3,859,151.00	\$ -	\$ 16,500,000.00	\$ 3,073,489.18	\$ -	\$ -	\$ 23,432,640.18
Capitalized Interest	\$ -	\$ 7,858,241.52	\$ 5,166,233.00	\$ 12,869,175.00	\$ 14,139,669.00	\$ 3,214,292.00	\$ -	\$ -	\$ 43,247,610.52
<b>D. Remaining</b>									
Uncontracted Funds	\$ 372,719.51	\$ 4,537,190.10	\$ 288,307.93	\$ (0.00)	\$ 714,507.14	\$ 458,515.59	\$ -	\$ 294,000.00	\$ 6,665,240.27
Funding Balance *	\$ 426,668.80	\$ 18,003,603.68	\$ 6,965,885.68	\$ 23,534,839.10	\$ 20,662,677.65	\$ 7,286,624.50	\$ 5,932.25	\$ 294,000.00	\$ 77,180,231.66

\*Excluding net investment income



## Exhibit 6

### GRP Program Current Authorizations as of March 31, 2015

#### Surface Water Transmission System - Consultant Services

Project	Firm	Amount Authorized by Board
T1	Jones & Carter	\$ 2,166,221.02
T2	Klotz Associates	\$ 1,822,718.66
T3	Espey	\$ 1,892,282.82
W1	LAN	\$ 2,469,560.65
W2	Binkley & Barfield	\$ 3,311,241.40
W3	Cobb Fendley	\$ 3,938,336.96
W4	LJA	\$ 1,009,006.98
C1	Dannenbaum	\$ 959,193.01
C2	Schaumburg & Polk	\$ 2,211,922.28
C3	Kimley Horn	\$ 1,238,749.53
C4	RG Miller	\$ 597,788.37
Fiber Optic	EMA	\$ 1,062,569.67
WRFs	Malcom Pirnie/Arcadis	\$ 2,680,366.57
CM&I	Kellog Brown & Root	\$ 8,657,135.48
<b>Subtotal - Surface Water Transmission System</b>		<b>\$ 34,017,093.40</b>

#### Surface Water Facilities - Consultant Services

Project	Firm	Amount Authorized by Board
WTP	HDR Engineering	\$ 19,601,356.64
HSPS	AECOM	\$ 5,455,218.39
StandPipe	AECOM	\$ 192,235.38
RWI&PS	Freese & Nichols	\$ 3,929,369.64
CA&I	CDMSmith	\$ 5,348,633.00
<b>Subtotal - Surface Water Facilities</b>		<b>\$ 34,526,813.05</b>

#### Program Consultant Services & Other Projects

Project	Firm	Amount Authorized by Board
Program Management	Brown & Gay	\$ 10,695,226.55
Program Survey	Landtech	\$ 553,621.50
Program Geotechnical	Raba Kistner	\$ 145,260.00
Prog Transient Analyses	AECOM	\$ 5,647,453.77
Access Rd/Misc Service	ACES	\$ 857,366.25
SWF Surveying	S&V Surveying	\$ 66,875.00





## Exhibit 6 (con't)

### GRP Program Current Authorizations as of March 31, 2015

Land Acq	KDM	\$ 431,592.70
Land Acq	PAS	\$ 1,413,334.88
Program Environmental	Halff Associates	\$ 1,063,698.87
Program Fiber Optics	EMA	\$ 1,062,569.67
Program Corrosion	V&A Consulting Engineers	\$ 866,676.00
Program Legal Services & Projects	Multiple	\$ 5,700,577.48
<b>Subtotal - Program Consultant Services &amp; Other Projects</b>		<b>\$ 28,504,252.67</b>

#### Surface Water Transmission System Extensions - Consultant Services

Project	Firm	Amount Authorized by Board
MUD99/115	IDS Engineering Group - x	\$ 470,720.00
MUD99/115	Andrews & Kurth - x	\$ 100,000.00
MUD99/115	PAS - x	\$ 200,000.00
MUD99/115	Arcadis - x	\$ 36,843.00
MUD99/115	V&A Consulting Engineers - x	\$ 41,256.00
MUD99/115	Brown & Gay - x	\$ 121,216.00
<b>Subtotal - Surface Water Transmission System Extensions</b>		<b>\$ 970,035.00</b>

#### Active or Completed Construction Contracts Managed by GRP

Project	Firm	Amount Authorized by Board
GRP Bldg No. 1	Brookstone	\$ 2,008,673.00
Bldg No. 1/Aqua Tx CMT	Aviles Engineering	\$ 123,814.55
Landscape Buffer	Key-Scape Landscape	\$ 53,090.00
Temp Access Road	Lindsey Construction	\$ 977,583.60
Access Road CMT	Terracon Consultants	\$ 10,359.70
Access Road Overlay and Detention	AAA Asphalt	\$ 412,284.59
Access Road Landscape	TreeScapes	\$ 34,165.00
Aqua Texas Sewer	Randy Roan Construction	\$ 547,341.17
Bldg No. 1 Fiber Line	Preferred Technologies	\$ 231,157.56
Surface Water Plant (CMAR)	McCarthy	\$ 190,704,740.00
SWF CMT	Geotest	\$ 2,011,780.00
Transmission Sytem Utility Relocations	Various	\$ 2,062,614.14
Transmission System CMT (T3, W1, W2, W3, W4)	Aviles	\$ 1,851,330.00
Transmission System CMT (T1, T2, C1, C2, C3, C4)	Terracon	\$ 756,711.25
Transmission Segment T1	S.J. Louis Construction of Texas Ltd	\$ 14,521,937.14
Transmission Segment T2	Texas Sterling Construction Company	\$ 13,475,718.33
Transmission Segment T3	S.J. Louis Construction of Texas Ltd	\$ 11,393,193.97
Transmission Segment C1A	Garney Companies, Inc.	\$ 3,837,683.40
Transmission Segment C1B	E.P. Brady, LTD.	\$ 544,393.60



## Exhibit 6 (con't)

### GRP Program Current Authorizations as of March 31, 2015

Transmission Segment C2	Garney Companies, Inc.	\$	9,014,837.00
Transmission Segment C3	E.P. Brady, LTD.	\$	4,972,314.80
Transmission Segment C4	BRH-Garver Construction, L.P.	\$	5,115,396.90
Transmission Segment W1A	Huff & Mitchell, Inc.	\$	8,222,000.50
Transmission Segment W1B	Texas Sterling Construction Company	\$	7,213,544.50
Transmission Segment W2A	Texas Sterling Construction Company	\$	16,340,258.02
Transmission Segment W2B	Texas Sterling Construction Company	\$	16,161,600.00
Transmission Segment W3A	Huff & Mitchell, Inc.	\$	7,880,207.50
Transmission Segment W3B	Garney Companies, Inc.	\$	8,114,716.70
Transmission Segment W3D	Alcott, Inc. (TCH)	\$	1,840,986.00
Transmission Segment W4	Huff & Mitchell, Inc.	\$	3,656,604.23
Receiving Facilities South	CSA	\$	7,127,383.00
Receiving Facilities North	Archer Western	\$	6,160,184.55
Transmission SCADA - Fiber Optic Construction	Fisk Electric Company	\$	2,885,432.35
Standpipe	CSA	\$	2,354,175.00
Miscellaneous	Other Construction Contracts, Permits, Fees, etc.	\$	233,666.23
<b>Subtotal - Construction Contracts</b>		<b>\$</b>	<b>352,851,878.28</b>

#### Active or Completed Engineering/Construction Contracts Managed by Participants

Project	Participant	Amount Authorized by Board	
Distribution and Well Collection Lines	Woodlands Water	\$	4,799,382.91
Distribution and Water Plants Improvements	City of Conroe Water	\$	12,952,247.00
Receiving Facilities	Rayford Road MUD Water	\$	1,752,244.00
Receiving Facilities	City of Oak Ridge North Water	\$	506,844.00
MSEC Receiving Facility and Distr. System Imp.	MSEC	\$	1,344,828.98
Wastewater Alkalinity Improvements	Southern Montgomery County MUD Wastewater	\$	455,975.00
<b>Subtotal -Engineering/Construction Managed by Participants</b>		<b>\$</b>	<b>20,010,717.91</b>

#### Totals

	Amount Authorized by Board
Surface Water Transmission System - Consultant Services	\$ 34,017,093.40
Surface Water Facilities - Consultant Services	\$ 34,526,813.05
Program Consultant Services & Other Projects	\$ 28,504,252.67
Surface Water Transmission System Extensions - Consultant Services	\$ 970,035.00
Active or Completed Construction Contracts	\$ 352,851,878.28
Engineering/Construction Managed by Participants	\$ 20,010,717.91
<b>Total</b>	<b>\$ 470,880,790.31</b>

# Exhibit 7

## San Jacinto River Authority Groundwater Reduction Plan

### Schedule of Revenues & Expenses—Actual and Budget

For Seven Months Ending March 31, 2015

	Mar	Fiscal Year To Date				Fiscal Budget	
	Actual	Actual	Budget	Variance	% Variance	Total Year Budget	Actual YTD % of Total Year Budget
<b>OPERATING REVENUES</b>							
GRP pumping fees	\$ 2,460,797	\$ 19,352,114	\$ 22,970,103	\$ (3,617,989)	(16%)	\$ 41,992,101	46%
GRP Surface Water Sales	-	-	-	-	0%	4,942,463	0%
<b>TOTAL OPERATING REVENUES</b>	<b>\$ 2,460,797</b>	<b>\$ 19,352,114</b>	<b>\$ 22,970,103</b>	<b>\$ (3,617,989)</b>	<b>(16%)</b>	<b>\$ 46,934,564</b>	<b>41%</b>
<b>OPERATING EXPENSES</b>							
Payroll & employee benefit expenses	\$ 381,911	\$ 2,498,796	\$ 2,953,687	\$ 454,891	15%	\$ 5,108,247	49%
Professional fees	17,373	129,399	324,800	195,401	60%	556,800	23%
Purchased & contracted services	33,502	96,226	179,510	83,284	46%	307,732	31%
Supplies, materials & utilities	(258,387)	1,477,924	4,528,389	3,050,465	67%	6,815,340	22%
Maintenance repairs, parts & rentals	202	5,434	46,083	40,650	88%	105,750	5%
General & administration	50,478	333,351	552,025	218,674	40%	946,329	35%
<b>TOTAL OPERATING EXPENSES</b>	<b>\$ 225,079</b>	<b>\$ 4,541,130</b>	<b>\$ 8,584,495</b>	<b>\$ 4,043,365</b>	<b>47%</b>	<b>\$ 13,840,198</b>	<b>33%</b>
<b>NON-OPERATING REVENUES &amp; EXPENSES</b>							
Interest on investments	\$ 47,722	\$ 250,625	\$ 116,480	\$ 134,145	115%	\$ 199,680	126%
Other revenues	-	1,950	-	1,950	100%	-	0%
Interest expense	(1,769,346)	(12,403,578)	(12,403,578)	-	0%	(21,360,309)	58%
<b>TOTAL NON-OPERATING (EXCLUDING ITEMS NOT BUDGETED)</b>	<b>\$ (1,721,624)</b>	<b>\$ (12,151,003)</b>	<b>\$ (12,287,098)</b>	<b>\$ 136,095</b>	<b>(1%)</b>	<b>\$ (21,160,629)</b>	<b>57%</b>
<b>NET INCOME (LOSS) (EXCLUDING ITEMS NOT BUDGETED)</b>	<b>\$ 514,094</b>	<b>\$ 2,659,981</b>	<b>\$ 2,098,510</b>	<b>\$ 561,471</b>	<b>27%</b>	<b>\$ 11,933,737</b>	<b>22%</b>
<b>NON-OPERATING REVENUES &amp; EXPENSES (NOT BUDGETED)</b>							
Depreciation	\$ (26,723)	\$ (181,961)	\$ -	\$ (181,961)	100%	\$ -	0%
Amortized debt issuance expense	363	2,539	-	2,539	100%	-	0%
<b>TOTAL NON-OPERATING (NOT BUDGETED)</b>	<b>\$ (26,360)</b>	<b>\$ (179,422)</b>	<b>\$ -</b>	<b>\$ (179,422)</b>	<b>100%</b>	<b>\$ -</b>	<b>0%</b>
<b>NET INCOME (LOSS) (BUDGETED AND NOT BUDGETED)</b>	<b>\$ 487,734</b>	<b>\$ 2,480,559</b>	<b>\$ 2,098,510</b>	<b>\$ 382,049</b>	<b>18%</b>	<b>\$ 11,933,737</b>	<b>21%</b>



# Exhibit 7 (con't)

## GRP Division

### Clarification of Actual & Budget Variances

### For Seven Months Ending March 31, 2015

Category	YTD - Driver	March 2015	FYTD 2015
GRP Pumping Fees	Usage variance due to weather conditions and change in consumer behavior. This trend began in FY2014 and has continued into FY2015. If the trend persists, pumpage and surface water rates may be impacted in future fiscal years.	(608)	(3,618)
Payroll and related expenses	Budgeted positions not filled as scheduled.	18	455
Professional Fees	Professional fees less than budgeted.	29	195
Purchased & Contracted Services	Purchased and contracted services less than budgeted.	(8)	83
Supplies, Materials, Utilities, Maintenance, Repairs, Parts & Rentals	Fuel, office supplies, phones, recruiting and misc. expenses less than budgeted.	9	172
	Chemicals-no usage this month	188	1,316
	Utilities-less than budgeted	68	476
	TRA Reservation Fee less than budgeted	-	62
	COH Reservation Fee less than budgeted	-	908
	SJRA Reservation Fee more than budgeted	303	116
	Maintenance repairs, parts & rentals expense less than budgeted.	7	41
	General & Administration	Allocated labor and related expenses less than budgeted, anticipated a quicker rate of growth than has been actualized.	29
Non-Operating	Interest/Investment Income	31	134
	Other Revenues	-	2
	Bond interest expense	-	1
	Capital Contributions	-	-
	Depreciation expense	(27)	(182)
	Bond Issuance Cost Amort expense	-	2
		<b>39</b>	<b>382</b>



## Exhibit 8

### GRP Program Monthly Meeting Log for March 2015

Meeting	Subject of Meeting	Location	Date	Participants
SWF Partnering Session	Construction	GRP Building	3/10/2015	GRP Staff, Engineers, Contractors, and Consultant Team
GRP Review Committee Meeting	Board Agenda Items	G&A Building	3/23/2015	GRP Review Committee, SJRA Staff, and General Public
SJRA Board of Directors Meeting	Board Agenda Items	G&A Building	3/26/2015	SJRA Board of Directors, SJRA Staff, and General Public
CMAR Coordination Meeting	CMAR	GRP Building	Weekly	SJRA Staff, GRP Program Team, and Consultant Team
Construction Administration and Inspection Meetings	Construction	GRP Building	Weekly	SJRA Staff, GRP Program Team, and CA&I Team
Transmission System Coordination Meeting	Transmission System	GRP Building	Weekly	Contractor, SJRA Staff, GRP Program Team, and Consultant Team
Water Receiving Facilities-South Progress Meeting	WRF-S	GRP Building	Monthly	Contractor, SJRA Staff, GRP Program Team, and Consultant Team
Water Receiving Facilities-North Progress Meeting	WRF-N	GRP Building	Monthly	Contractor, SJRA Staff, GRP Program Team, and Consultant Team
Segments W2B, and W3A Progress Meetings	Segments W2B and W3A	GRP Building	Monthly	Contractor, SJRA Staff, GRP Program Team, and Consultant Team
Segments T1 Progress Meeting	Segments T1	GRP Building	Monthly	Contractor, SJRA Staff, GRP Program Team, and Consultant Team
Segment T3 Bi-Weekly Progress Meeting	Segment T3	GRP Building	Bi-Weekly	Contractor, SJRA Staff, GRP Program Team, and Consultant Team
Standpipe Progress Meeting	Standpipe	GRP Building	Monthly	Contractor, SJRA Staff, GRP Program Team, and Consultant
FONCS Monthly Progress Meetings	FONCS	GRP Building	Monthly	Contractor, SJRA Staff, GRP Program Team, and Consultant
Surface Water Facility Progress Meeting	Surface Water Facilities	GRP Building	Bi-Monthly	SJRA Staff, CMAR, CA&I, and Consultant Team



## Surface Water Facilities Construction Photos



## EXHIBIT 9 SWF Construction Photos



## EXHIBIT 9 (con't) SWF Construction Photos



① *Membrane Building — Installation of membrane cartridges*



## EXHIBIT 9 (con't) SWF Construction Photos



❶ *Membrane Building — Installation of membrane cartridges*

## EXHIBIT 9 (con't) SWF Construction Photos



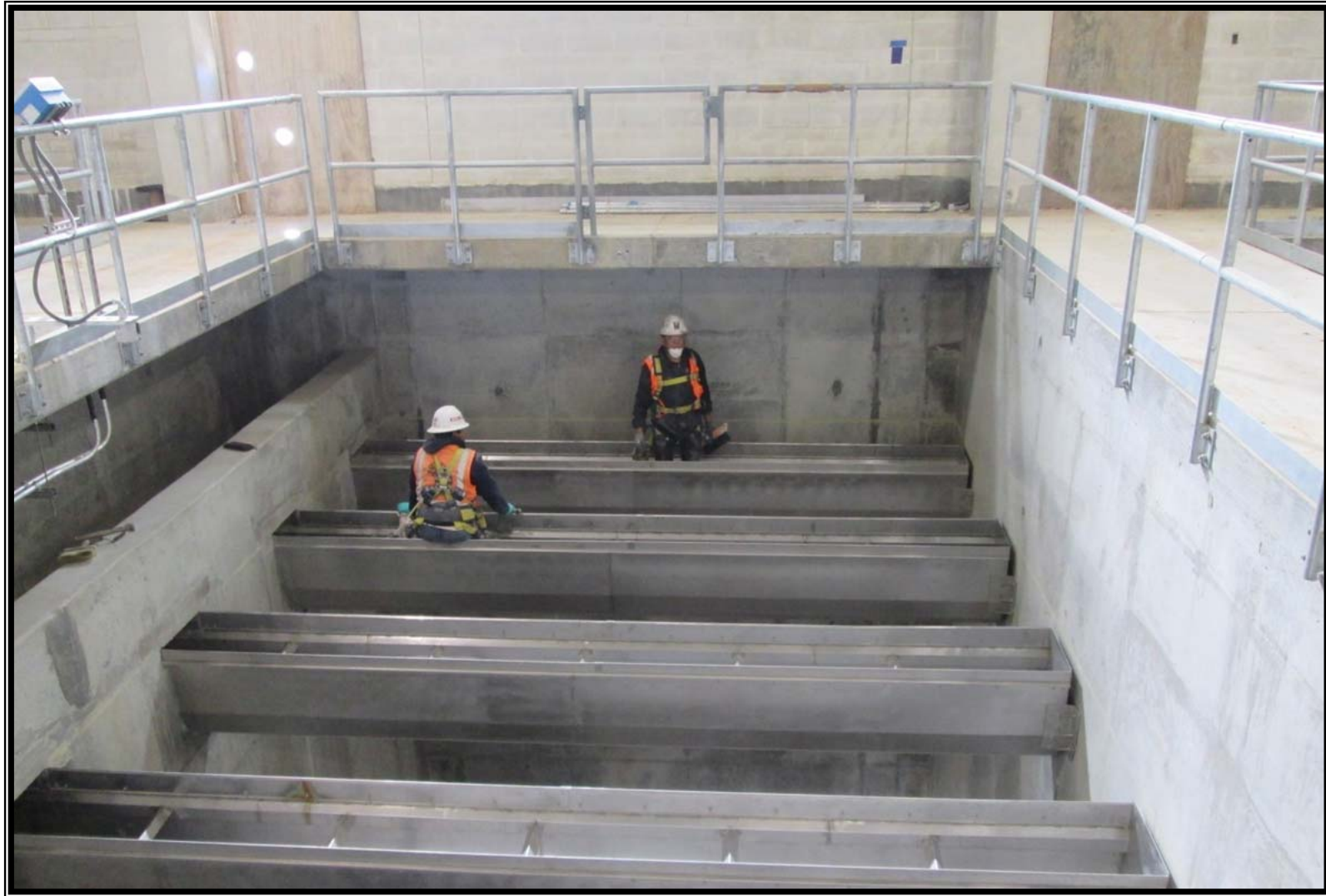
❶ *Membrane Building — Lab millwork installation*

## EXHIBIT 9 (con't) SWF Construction Photos



① *Membrane Building — Installation of process water sample faucets*

## EXHIBIT 9 (con't) SWF Construction Photos



② *Granulated Activated Carbon (GAC) Building — Cleaning of contractor trough and basin*

## EXHIBIT 9 (con't) SWF Construction Photos



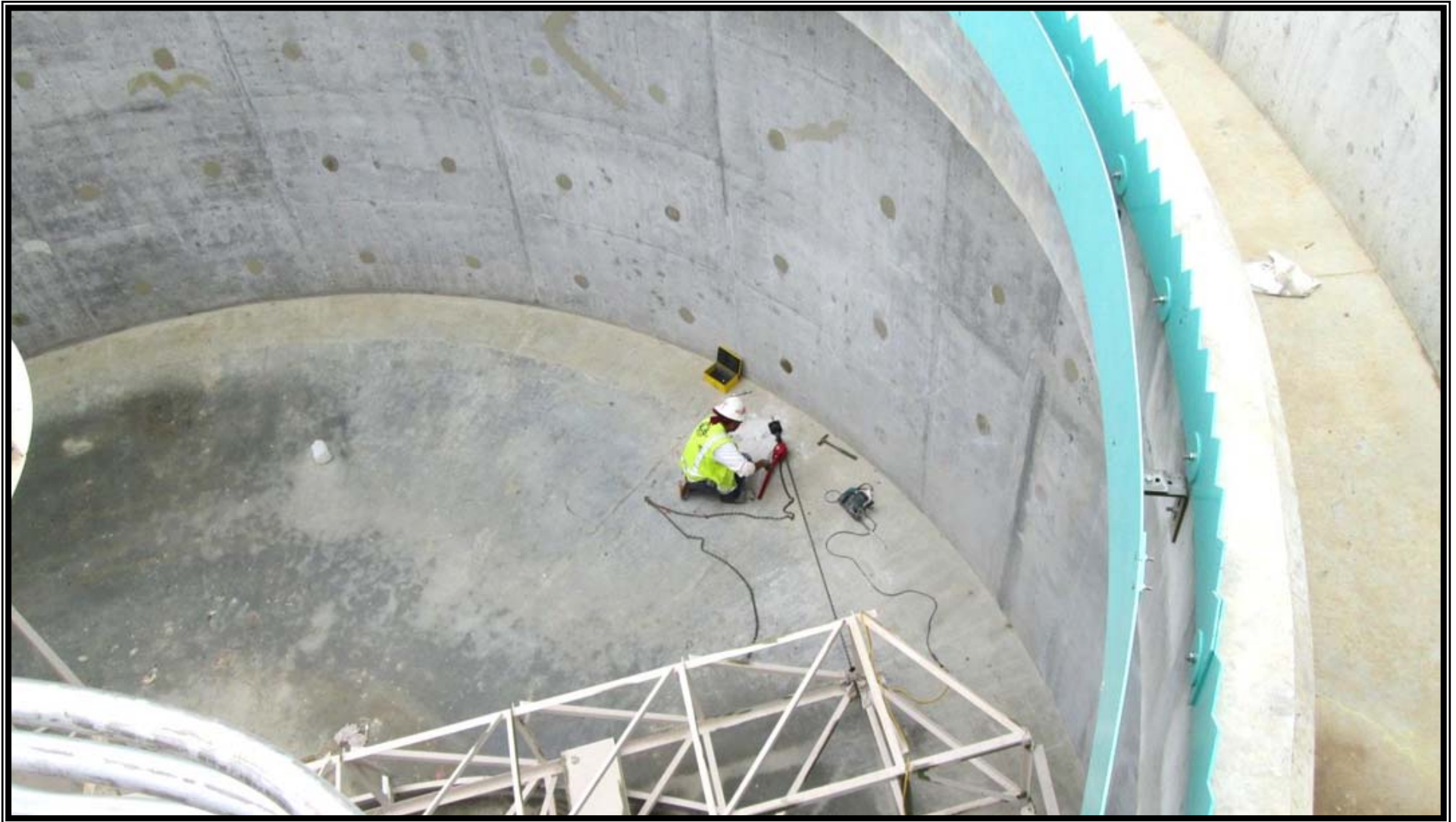
② *Granulated Activated Carbon (GAC) Building*

## EXHIBIT 9 (con't) SWF Construction Photos



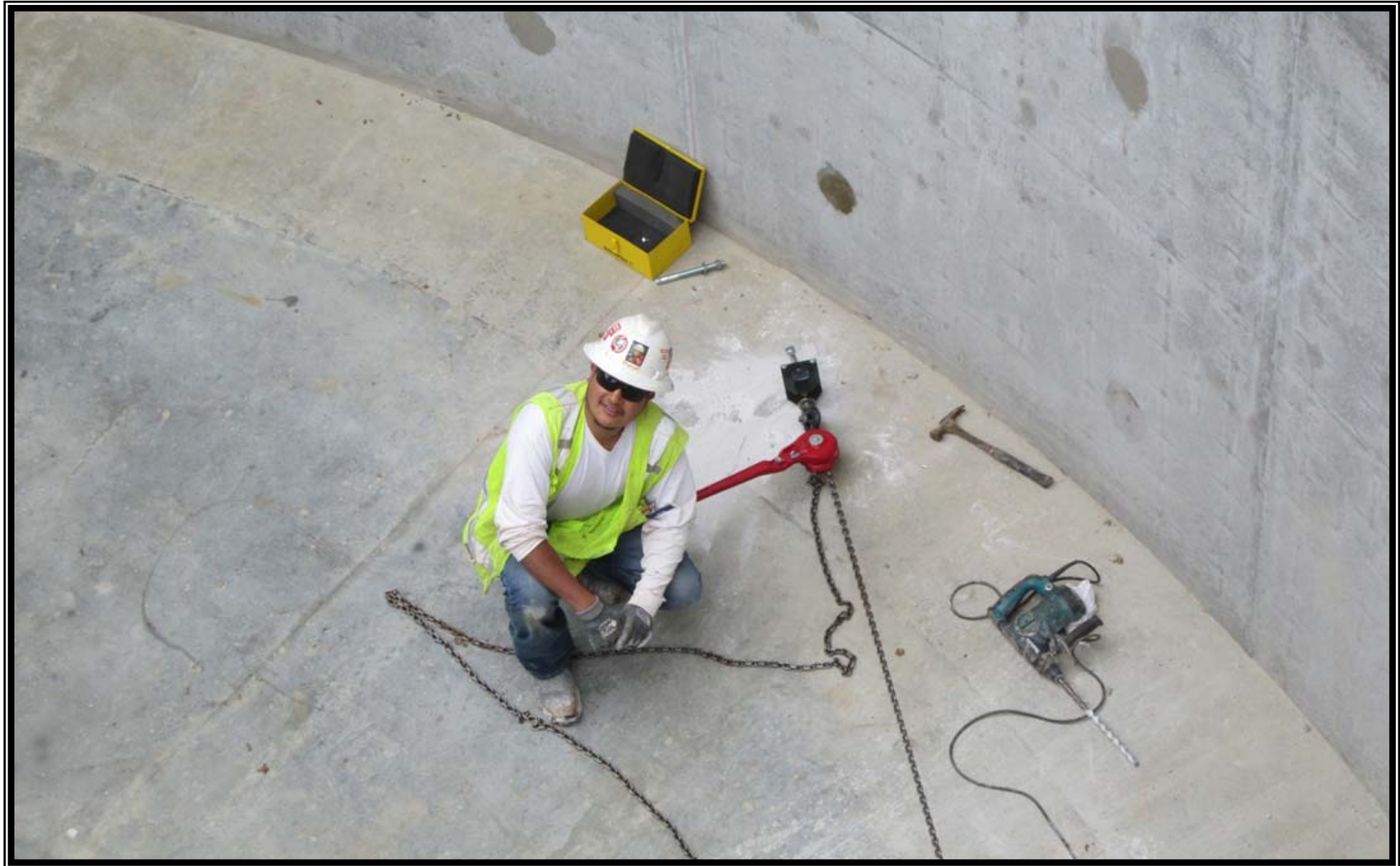
② *Granulated Activated Carbon (GAC) — Delivery and storage of 880 tons of GAC*

## EXHIBIT 9 (con't) SWF Construction Photos



③ *Sludge Thickener — Torque testing of thickener drive unit*

## EXHIBIT 9 (con't) SWF Construction Photos



③ *Sludge Thickener — Torque testing of thickener driver unit*



## EXHIBIT 9 (con't) SWF Construction Photos



④ *Process Water Recovery — Soil cement lining installation*

## EXHIBIT 9 (con't) SWF Construction Photos



⑤ *Maintenance Building — Installation of drilled shafts*

## EXHIBIT 9 (con't) SWF Construction Photos



*General Site — Stabilization of pavement subgrade*

## EXHIBIT 9 (con't) SWF Construction Photos

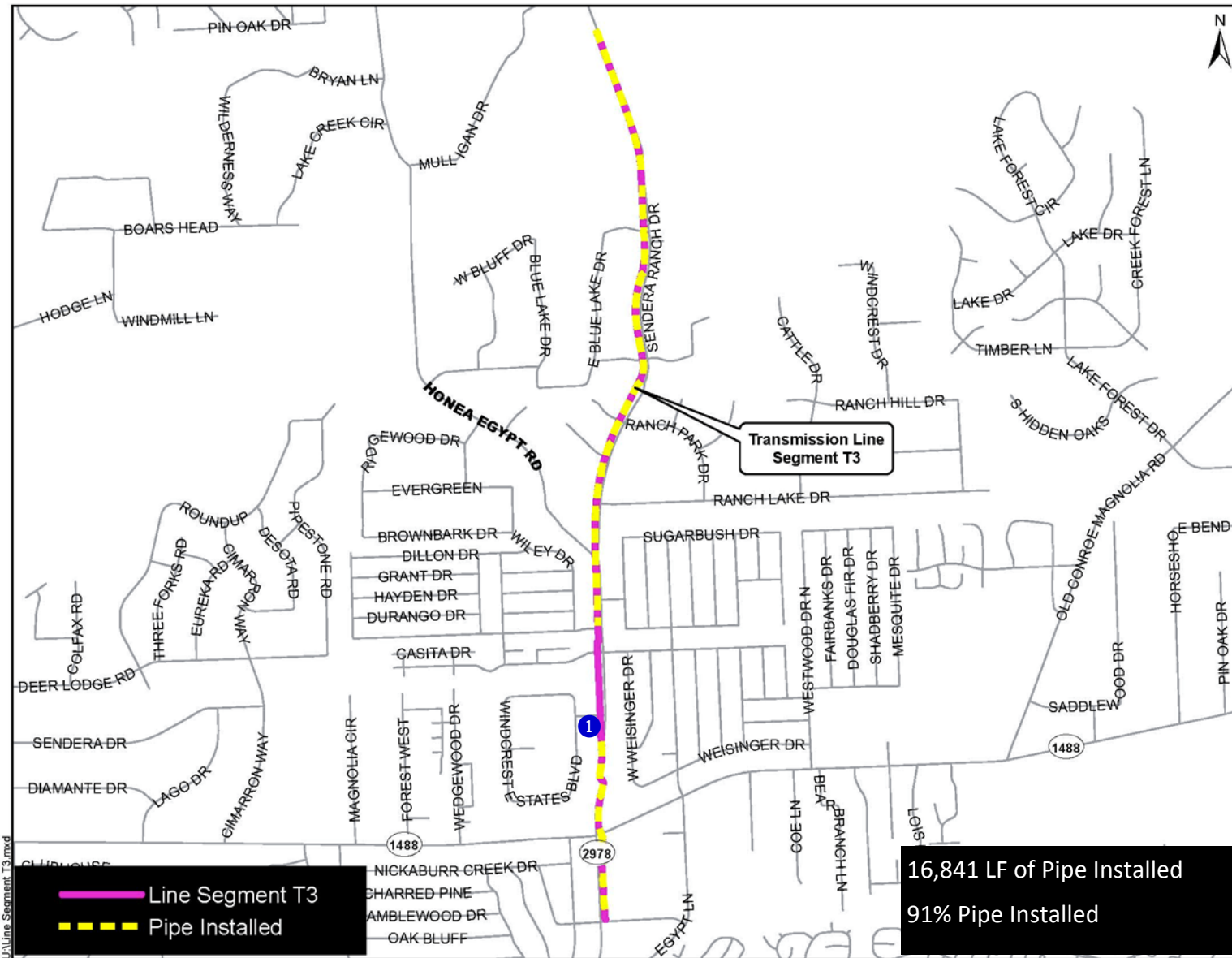


*General Site — Roadway installation from main entrance to Power Supply Building*

## Transmission Line System Construction Photos



# EXHIBIT 10 (con't) Transmission Line System Construction Photos

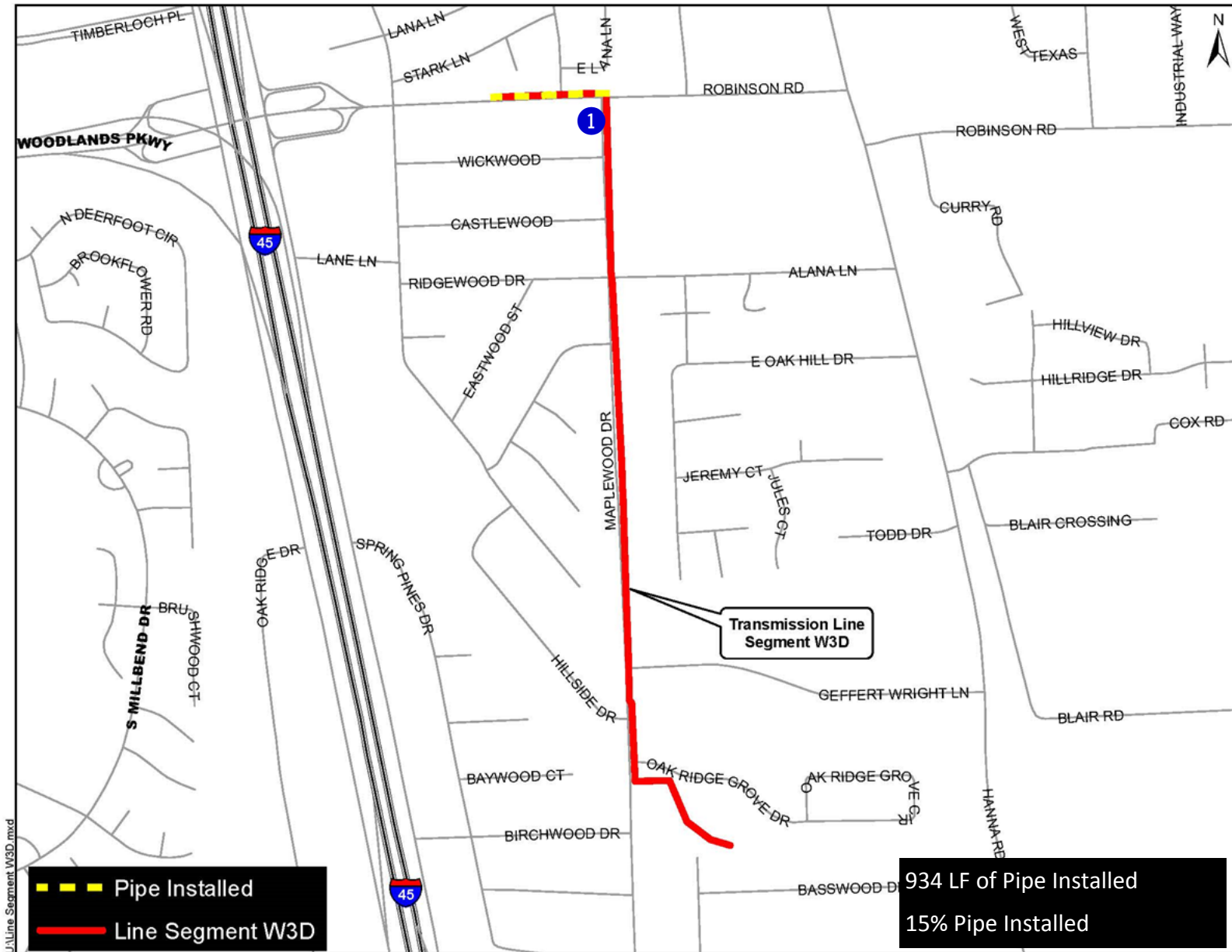


## EXHIBIT 10 (con't) Transmission Line System Construction Photos



❶ *54-inch open-cut installation along Sendera Ranch Drive*

# EXHIBIT 10 (con't) Transmission Line System Construction Photos





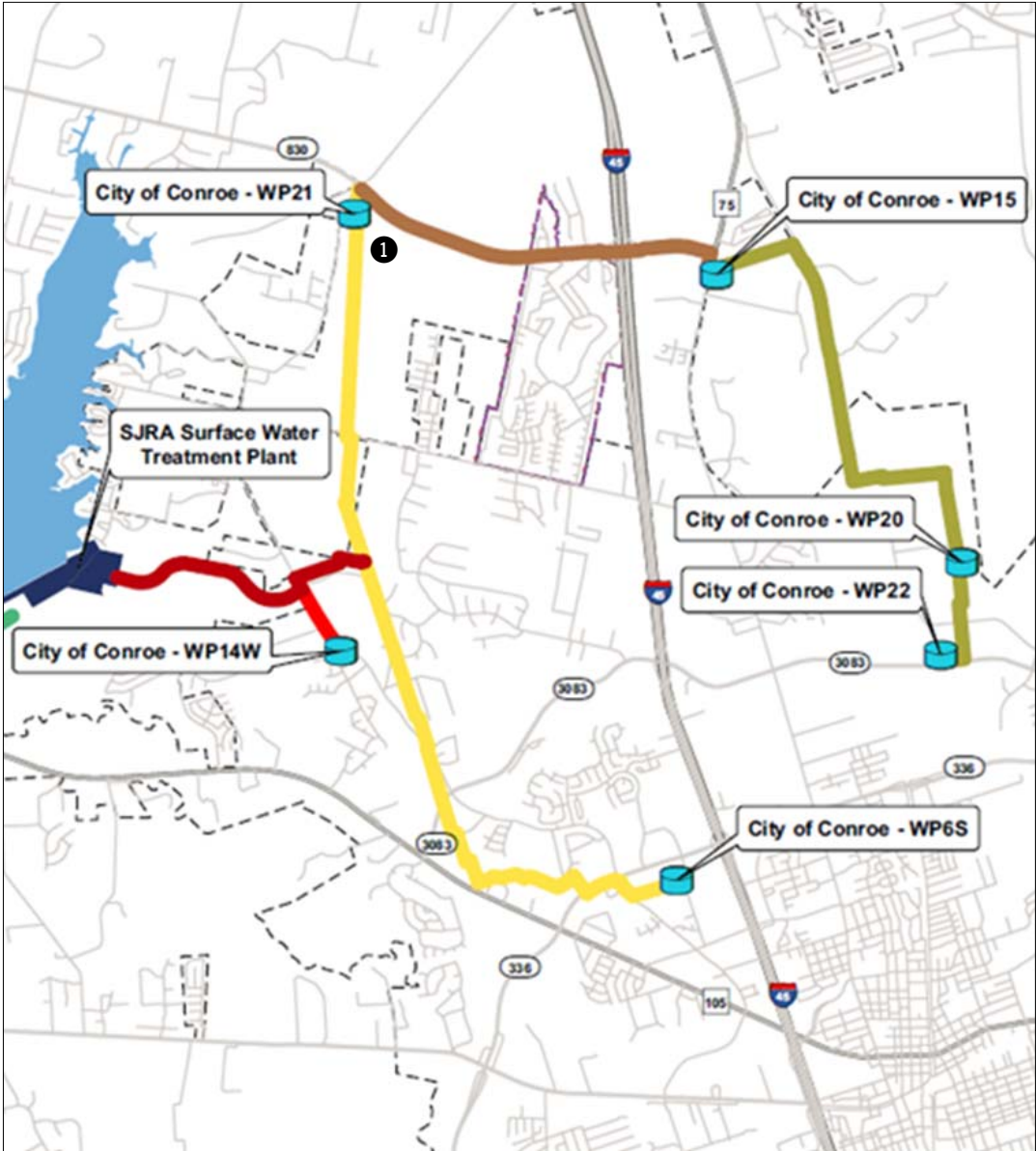
## EXHIBIT 10 (con't) Transmission Line System Construction Photos



① 16-inch pipe trenchless bore pit installation along Maplewood Drive

# EXHIBIT 11 Surface Water Standpipe Construction Photos

Surface Water Standpipe



## EXHIBIT 11 (con't) Surface Water Standpipe Construction Photos



① *Final grading, aboveground pipe coating, and fencing completed at Standpipe*

# Facility Improvements by GRP Participants Photos



## EXHIBIT 12 (con't) Facility Improvements by GRP Participants Photos



**Rayford Road Water Receiving Facility**



**Oak Ridge North Water Receiving Facility**



**Mid-South Water Receiving Facility**

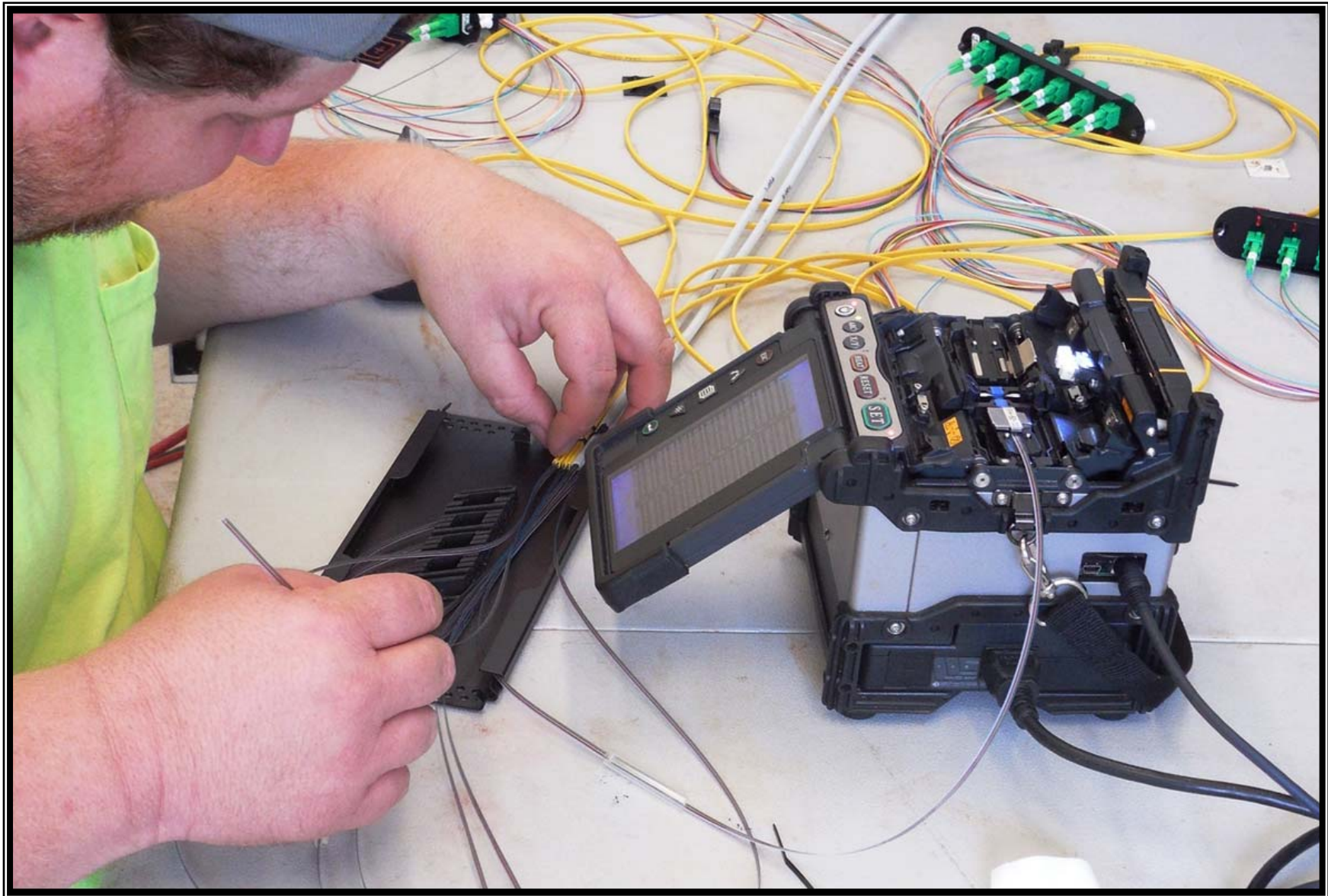


**System Improvements at Conroe Water Plant No. 6**

# Fiber Optic Network Communication System Photos



## EXHIBIT 13 (con't) Fiber Optic Network Communication System Photos



*Fiber optic termination and cable tagging at ground box*

# 7.0 GRP PROGRAM EXTENSIONS

## 7.1 ENGINEERING

Design efforts are underway for the GRP Program Extension projects. Below is a summary of the extension projects through the month of March.

**Transmission Segment W3C**—Segment W3C includes approximately 6,900 linear feet of 12-inch pipe to be constructed east of and connecting to Segment W3B along the Kinder Morgan (Tennessee Gas) pipeline corridor east of I-45, to northward along Aldine Westfield Road to the Montgomery County MUD 99 Water Plant No. 1. The 60% design drawings, specifications and metes and bounds efforts have been reviewed and 90% contract documents are in process.

**MUD 99 Receiving Facilities**—The 100% design drawings and specifications were initiated in December and are currently in process. At this time, these documents are planned to be combined with the Segment W3C transmission contract documents for a single contract.

