



# GROUNDWATER REDUCTION PLAN PROGRAM

MONTHLY PROGRESS REPORT - JULY 2014



# TABLE OF CONTENTS

<b>Table of Contents</b>	1	<b>4.0 Cost Report and Financial Considerations</b>	12
<b>Acronyms and Definitions</b>	2	4.1 GRP Program and GRP Project CIP Budget(s)	12
<b>1.0 Planning</b>	3	4.2 Financial Reports	12
1.1 Strategic	3	4.3 Invoices/Applications for Payment	12
1.2 Engineering and Construction	3	4.4 Contract Amendments and Change Orders	13
1.3 Meetings	3	4.5 Claims	13
<b>2.0 Project Activities</b>	4	4.6 CIP Cash Flow	13
2.1 Engineering	4	4.7 CIP Budget Estimates at Completion	13
2.2 State Agency Coordination	4	4.7.1 GRP Program	13
2.3 Surface Water Transmission System Project Data	5	4.7.2 GRP Projects	13
2.4 Surface Water Transmission System Construction Progress	8	4.8 Land Acquisition	13
2.5 Surface Water Facility Construction Progress and Project Data	10	<b>5.0 Quality Assurance</b>	14
<b>3.0 Procurement</b>	11	5.1 Final Design	14
3.1 Solicitations	11	5.2 Pre-Construction	14
3.2 Contract Awards	11	5.3 Construction	14
3.3 Process and Procedures	11	<b>6.0 Exhibits</b>	15
3.4 Look Ahead	11	<b>7.0 GRP Program Extensions</b>	70
		7.1 Engineering	70



# ACRONYMS AND DEFINITIONS

## ACRONYMS

CA&I	Construction Administration and Inspection
CCT	Construction Communication Team
CIP	Capital Improvement Project
CM&I	Construction Management and Inspection
CMAR	Construction Manager At Risk
CMT	Construction Materials Testing
CSB / P	Competitive Sealed Bid / Proposal
EA	Environmental Assessment
EAC	Estimate At Completion
FONCS	Fiber Optics Network Communication System
GIS	Geographic Information System
GRP	Groundwater Reduction Plan
GST	Groundwater Storage Tank
HSPS	High Speed Pump Station
LSGCD	Lone Star Groundwater Conservation District
LVGU	Large Volume Groundwater User
NTP	Notice To Proceed
PER	Preliminary Engineering Report
PMP	Program Management Plan
PVC	Polyvinyl Chloride
PSA	Professional Services Agreement
QA	Quality Assurance
RCCP	Reinforced Concrete Cylinder Pipe
RFB / Q / P	Request For Bids / Qualifications / Proposals
RWI / RWPS	Raw Water Intake / Raw Water Pump Station
SJRA	San Jacinto River Authority
SOQ	Statement of Qualifications
SWF	Surface Water Facilities (SWTP, HSPH and RWI)
SWRF	Surface Water Receiving Facilities
SWTP	Surface Water Treatment Plant
TCEQ	Texas Commission on Environmental Quality

## DEFINITIONS

<b>TWDB</b>	Texas Water Development Board
<b>TXDOT</b>	Texas Department of Transportation
<b>WIF</b>	Water Infrastructure Fund
<b>GROUNDWATER REDUCTION PLAN (GRP)</b>	The document developed and filed with the LSGCD indicating SJRA's plan to reduce the permitted 2009 groundwater pumpage of its GRP Participants by 30%. The GRP is administered by the SJRA, including any supplements, revisions, or amendments.
<b>GRP PROGRAM TEAM</b>	SJRA staff, Program Management Consultant (Brown & Gay Engineers, Inc.) staff, and technical consultants working interdependently toward meeting the goals of the Groundwater Reduction Plan.
<b>GRP ADMINISTRATOR</b>	The SJRA General Manager's designee who administers the SJRA Groundwater Reduction Plan and GRP Contract with GRP Participants.
<b>GRP CONTRACT</b>	Contract between the SJRA and a Participant to be included in the SJRA's efforts to meet the surface water conversion requirements mandated by the LSGCD.
<b>GRP EXTENSION PROJECTS</b>	Safe harbor related projects not related to Phase 1, but tracked independently of Phase 1.
<b>JOINT GRP</b>	GRP which is prepared to include (takes into account) LVGUs who have executed a GRP Contract with the SJRA to join the SJRA's GRP. Contracted LVGUs obtain LSGCD groundwater reduction regulation compliance through the SJRA's Joint GRP without preparing and submitting a GRP.
<b>LARGE VOLUME GROUNDWATER USER(S) (LVGU)</b>	Any person or entity that, through a single well or a combination of wells, actually produces or is authorized by permit(s) issued by the LSGCD to produce 10 million gallons or more of groundwater annually on or after January 1, 2008.
<b>PARTICIPANT(S)</b>	Regulated User(s) that enters into and remains subject to a written agreement with the SJRA to be included in the SJRA's GRP and includes the legal successors or assigns of Participant(s).
<b>REGULATED USER(S)</b>	Any public or private entity or person that is or becomes subject to the District Regulatory Plan established by the LSGCD and includes any amendments, revisions or supplements thereto as may be adopted by the LSGCD.
<b>SJRA GRP DIVISION</b>	Division of the SJRA responsible for GRP compliance, and the management, administration, operation and maintenance of the surface water facilities and surface water transmission system.



## 1.0 PLANNING

The GRP Program Team meets regularly for the purposes of setting performance expectations and goals of the GRP Program, identifying the efforts required to achieve these objectives, evaluating the effectiveness of such efforts, and modifying those efforts based upon both internal and external performance evaluations.

### 1.1 STRATEGIC

Plans are underway to place the Surface Water Transmission System (“transmission system”) in service as it is completed. Transmission Line Segment C1B is the first transmission line completed and is now under full ownership of the GRP Division. As construction is completed on each segment, the transmission line will be individually tested and accepted. Once all of the segments have completed this process, the entire transmission system will be placed into service. Start-up and commissioning of the transmission system will be done in concert with the water treatment plant.

Start-up of the transmission system will include flushing, disinfecting, and filling the water transmission lines; making sure all of the valves and controls are working properly; bleeding off any air that may be in the pipes and bringing the system up to working pressure. This work will be done in coordination with the owners and operators of the facilities that will be receiving surface water.

In anticipation of the delivery of surface water to Participant water systems, staff is developing a water quality public relations campaign to educate water system operators and their customers about our surface water, blending it with their existing water supplies, and what to expect when that change happens.

### 1.2 ENGINEERING AND CONSTRUCTION

All procurement services for construction proposals, with the exception of the permanent access road and Segment W3D, have been completed and fifteen transmission line construction contracts have been awarded. The engineering consultants will continue to provide construction phase services by reviewing submittals and requests for information as work proceeds.

### 1.3 MEETINGS

Various meetings continued this month with the GRP Program Team. A listing of these meetings is attached as ***Exhibit 9***.



*Center column of sludge thickener at the Surface Water Facility*

## 2.0 PROJECT ACTIVITIES

Currently, the GRP Program remains on schedule for the delivery of treated surface water to select Joint GRP Participants on or before January 1, 2016. A simplified GRP Program schedule can be found in attached Exhibit 1.

### 2.1 ENGINEERING

#### SURFACE WATER TRANSMISSION SYSTEM

**Segments T1, T2, T3, W1A, W1B, W2A, W2B, W3A, W3B, W4, C1A, C1B, C2, C3, C4, Surface Water Receiving Facilities—North, Surface Water Receiving Facilities—South, Standpipe, and Fiber Optic Communications System** – Design is complete. Engineering consultant is providing construction phase services.

**Segment W3D** - Segment W3D includes approximately 6,200 linear feet of 16-inch and 12-inch waterline and 3-inch fiber optic conduit along Maplewood Drive and Robinson Road between Southern Montgomery County MUD Plant No. 3 and the City of Oak Ridge North Plant. 90% design review was completed and comments were provided to the consultant. Anticipate advertising in September and awarding the construction contract in December.

**Construction Management and Inspection (CM&I)** – The CM&I consultant provided management and inspection services for Transmission Segments T1, T2, T3, W1A, W1B, W2A, W2B, W3A, W3B, W4, C1A, C1B, C2, C3, C4, WRF-N, WRF-S, and the Standpipe.

**Construction Materials Testing Consultant (CMT)** - CMT consultant is currently working with CM&I staff to perform industry standard construction materials testing. Testing includes subgrade and backfill soil densities, compressive strengths, masonry and coatings.

#### SURFACE WATER FACILITIES

**Raw Water Intake Pump Station** – Design is complete. Engineering consultant is providing construction phase services.

**Surface Water Treatment Plant** – Design is complete. Engineering consultant is providing construction phase services.

**High Service Pump Station and Ground Storage Tanks** – Design is complete. Engineering consultant is providing construction phase services.

**Construction Administration and Inspection (CA&I)** – The CA&I consultant for the SWF is currently working with the CMAR and SJRA staff to review submittals and RFI's, and provide constant field monitoring and inspection of the systems being installed.

**Construction Materials Testing Consultant (CMT)** - The CMT consultant for the SWF is currently working with the CMAR and CA&I staff to perform industry standard construction materials testing. Testing includes soil densities, compressive strength/properties of concrete placed; and welding, coatings and masonry testing.

**Cathodic Protection** - The cathodic protection consultant has completed their design effort for both the transmission line segments and the Surface Water Facilities and is providing construction phase services.

### 2.2 STATE AGENCY COORDINATION

The Texas Water Development Board (TWDB) completed the field inspection of the Surface Water Facilities construction site on July 30, 2014. The TWDB visited the various transmission line segments and receiving facilities construction sites on July 9, July 29 and July 30, 2014 .

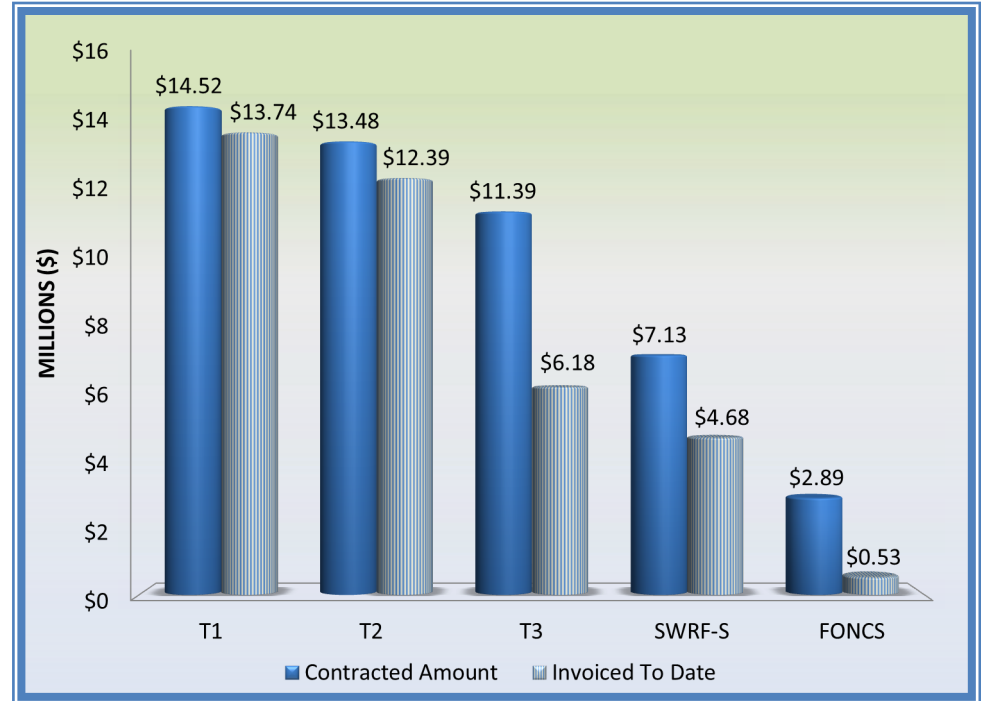


*Electrical conduit at Raw Water Intake and Pump Station at Surface Water Facility*

## 2.0 PROJECT ACTIVITIES (CONTINUED)

### 2.3 SURFACE WATER TRANSMISSION SYSTEM PROJECT DATA

The month of July concluded with the installation of approximately 201,509 feet or 38 miles of various sized concrete coated steel pipe, PVC pipe and bar wrapped concrete mortar pipe along the majority of the transmission line segments. This represents approximately 74% of the total planned pipe to be installed throughout Montgomery County by or before January 1, 2016. The following graphs and charts show the progress of Transmission Line Segments T1, T2, T3, W1A, W1B, W2A, W2B, W3A, W3B, W4, C1A, C1B, C2, C3, C4, Surface Water Transmission North Water Receiving Facilities (SWRF-N), Surface Water Transmission South Water Receiving Facilities (SWRF-S), Standpipe and Fiber Optics Network Communication System (FONCS) thus far.



Surface Water Transmission System Total Progress To Date	
Total Contracted Amount	\$149,001,350.29
Total Invoiced To Date	\$105,535,314.02
Total % Complete Based on Invoice Amount	71%

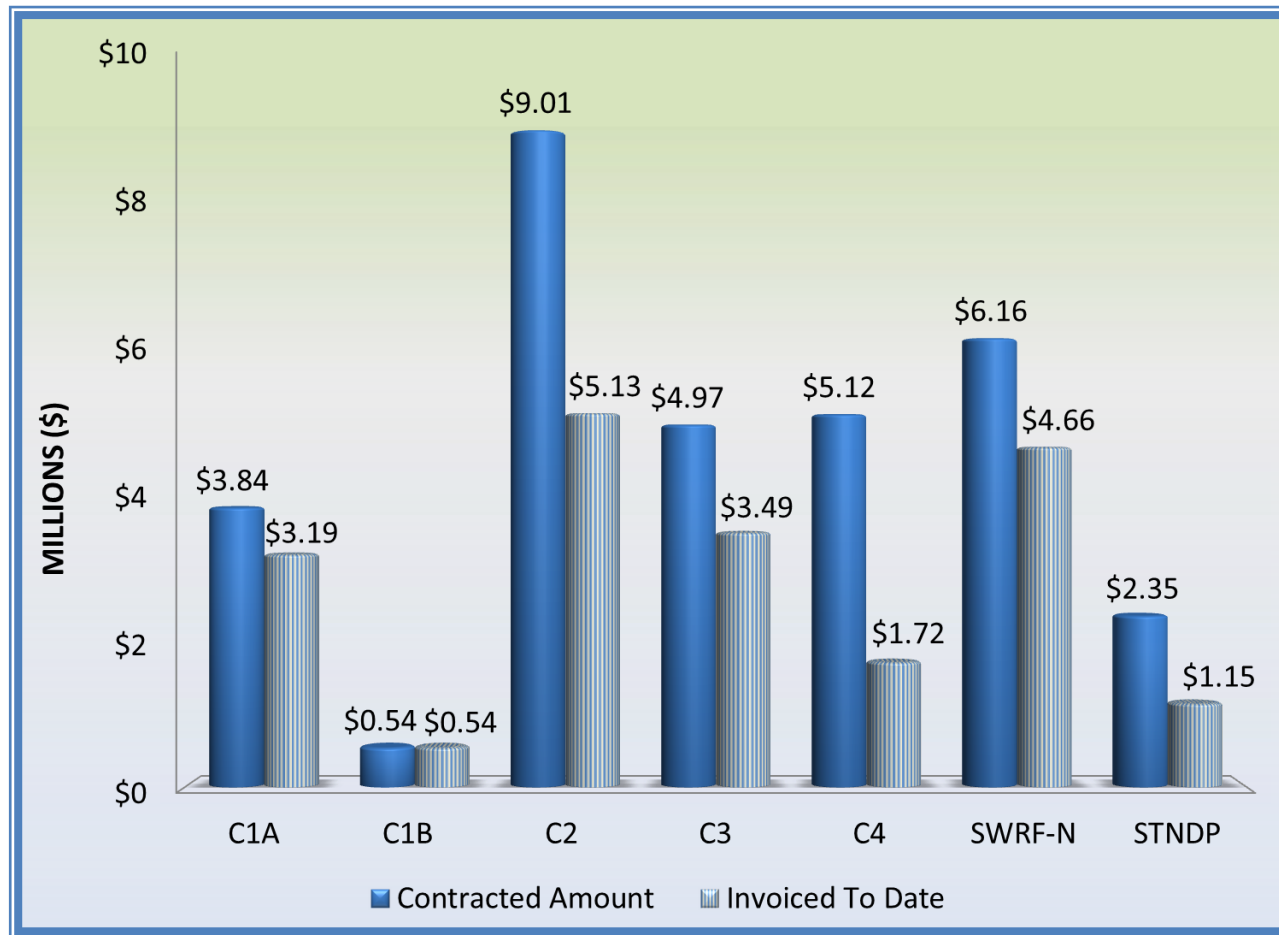
Segment	T1	T2	T3	SWRF-S	FONCS
Contracted Amount	\$14,521,937.14	\$13,475,718.33	\$11,393,193.97	\$7,127,383.00	\$2,885,432.35
Invoiced To Date	\$13,741,346.29	\$12,386,460.10	\$6,181,745.30	\$4,675,854.52	\$528,236.00
% Complete	95%	92%	54%	66%	18%

## 2.0 PROJECT ACTIVITIES (CONTINUED)



Segment	W1A	W1B	W2A	W2B	W3A	W3B	W4
Contracted Amount	\$8,222,000.50	\$7,213,544.50	\$16,340,258.02	\$16,161,600.00	\$7,880,207.50	\$8,124,485.50	\$3,656,604.23
Invoiced To Date	\$7,188,393.11	\$6,550,019.23	\$12,273,455.69	\$14,293,932.25	\$2,221,967.34	\$2,441,359.37	\$3,167,181.77
% Complete	87%	91%	75%	88%	28%	30%	87%

## 2.0 PROJECT ACTIVITIES (CONTINUED)



Segment	C1A	C1B	C2	C3	C4	SWRF-N	STANDPIPE
Contracted Amount	\$3,837,683.40	\$544,393.60	\$9,014,837.00	\$4,972,314.80	\$5,115,396.90	\$6,160,184.55	\$2,354,175.00
Invoiced To Date	\$3,193,164.65	\$544,939.60	\$5,128,954.96	\$3,492,051.39	\$1,715,738.24	\$4,663,808.11	\$1,147,252.10
% Complete	83%	100%	57%	70%	34%	76%	49%



## 2.0 PROJECT ACTIVITIES (CONTINUED)

### 2.4 SURFACE WATER TRANSMISSION SYSTEM CONSTRUCTION PRO-

Significant progress continues to be made each month with regard to pipe installation on each of the fifteen Surface Water Transmission Line Segments. The chart below represents the overall pipe installation statistics through the month of July.

Transmission Line System Pipe Installation Statistics to Date	
Total Piping Installed to Date	38 miles
Total % of Pipe Installed to Date	74%

**Segment T1** - Contractor continues to perform site and pavement restoration along McCaleb Road and hydrostatic pressure testing the 60-inch concrete coated steel pipe within the SJRA Campus. 100% of pipe installation totaling 20,514 feet of 60-inch concrete coated steel pipe was installed and completed in May. (See Exhibit 11, Page 38)

**Segment T2** - Contractor continues site and pavement restoration and hydrostatic pressure testing the 54-inch concrete coated steel pipe along Fish Creek Thoroughfare. 100% of pipe installation totaling 23,475 feet of 60-inch and 54-inch concrete coated steel pipe was installed and completed in May. (See Exhibit 11, Page 39)

**Segment T3** - Contractor continued utility coordination along Fish Creek Thoroughfare and tunneling operations along FM 2978 and FM 1488, and began 54-inch concrete coated steel pipe installation along Sendera Ranch. Approximately 10,025 feet of 54-inch concrete coated steel pipe along Fish Creek Thoroughfare has been installed through this month. (See Exhibit 11, Page 40)

**Segment W1A** - Contractor completed tunneling and open-cut installation of 54-inch and 48-inch concrete coated steel pipe, 54-inch and 48-inch steel pipe, and fiber optic conduit along Research Forest Drive this month. Con-

crete pavement restoration and hydrostatic testing continues along Research Forest Drive. Approximately 23,064 feet of 54-inch steel pipe, 48-inch concrete coated steel and 16-inch PVC pipe has been installed through this month. (See Exhibit 11, Page 42)

**Segment W1B** - Contractor continued site restoration along Research Forest Drive, hydrostatic pressure testing of waterline segment, and testing of Fiber Optic Conduit. Approximately 17,122 feet of 48-inch and 42-inch concrete coated steel pipe and 20-inch and 16-inch PVC pipe has been installed through this month. (See Exhibit 11, Page 44)

**Segment W2A** - Contractor continued trenchless and open-cut installation of 42-inch concrete coated steel pipe along Research Forest Drive in the area near The Woodlands High School. Contractor installed fault protection near the Big Barn Fault. 100% of pipe installation totaling 18,297 feet of 30-inch and 20-inch PVC pipe and 42-inch concrete coated steel pipe was installed and completed in May. (See Exhibit 11, Page 45)

**Segment W2B** - Contractor completed micro-tunneling and installation of 56-inch steel casing at Waterway crossing. Approximately 13,712 feet of 30-inch PVC pipe has been installed through this month. (See Exhibit 11, Page 47)

**Segment W3A** - Contractor continued trenchless and open-cut installation of 24-inch and 20-inch PVC pipe and began subgrade preparation along Grogans Mill. Approximately 3,836 feet of 24-inch and 20-inch PVC pipe has been installed through this month. (See Exhibit 11, Page 49)

**Segment W3B** - Contractor continued trenchless installation of 18-inch, 16-inch, and 12-inch PVC pipe along Montgomery County Drainage District No. 6 right-of-way and Kinder Morgan easement. Contractor began tunnel crossing under I-45. Approximately 4,183 feet of 18-inch, 16-inch, and 12-inch PVC pipe has been installed through this month. (See Exhibit 11, Page 51)

**Segment W4** - Contractor continued installing valves and related appurtenances, testing fiber optic conduit, and site restoration along Gosling Road. All pipe connections were completed. Approximately 13,038 feet of 20-inch PVC pipe has been installed through this month. (See Exhibit 11, Page 53)

## 2.0 PROJECT ACTIVITIES (CONTINUED)

**Segment C1A** - Contractor completed installation of 42-inch bar wrapped concrete mortar pipe along GRP Access Road. Approximately 10,272 feet of 42-inch wrapped concrete mortar pipe has been installed through this month. (See Exhibit 11, Page 54)

**Segment C1B** - Contractor completed the Substantial Completion Punch List items. Contractor received Certificate of Final Completion on July 9th. 100% pipe installation totaling 2,455 feet of 16-inch PVC pipe was completed in February. (See Exhibit 11, Page 55)

**Segment C2** - Contractor continued installation of 36-inch and 30-inch concrete coated steel pipe and fiber optic conduit along Entergy easement and continued trenchless installation across League Line Road. Contractor completed 12-inch PVC pipe installation within Peet Jr. Middle School property. Approximately 16,159 feet of 36-inch and 30-inch concrete coated steel pipe, and 16-inch and 12-inch PVC pipe has been installed through this month. (See Exhibit 11, Page 56)

**Segment C3** - Contractor continued open-cut installation of 20-inch PVC pipe on Girl Scouts and adjacent to UPRR properties. Fiber optic conduit installation began along Pollock Drive and Tom Stinson Drive. Approximately 19,233 feet of 20-inch and 16-inch PVC pipe has been installed through this month. (See Exhibit 11, Page 58)

**Segment C4** - Contractor continued open cut installation of 24-inch PVC pipe along FM 830 and I-45 crossing. Approximately 6,124 feet of 24-inch and 20-inch PVC pipe has been installed through this month. (See Exhibit 11, Page 60)

**Standpipe** - Contractor began installing the Standpipe tank panels and related appurtenances. Standpipe construction is approximately 41% complete. (See Exhibit 12, Page 66)

**Fiber Optic Communications System** - Contractor continued submittal process, ordering fiber optic cable and coordination efforts, and receiving fiber optic cable. (See Exhibit 13, Page 69)



*Empty fiber optic wheel along Segment C1A*

## 2.0 PROJECT ACTIVITIES (CONTINUED)



Well-pointing at Segment W2A—The Woodlands High School

### **SURFACE WATER RECEIVING FACILITIES**

**Surface Water Receiving Facilities—North** - Contractor continued surface water piping at various receiving facilities, continued GST modifications, disinfection and cleaning at Conroe Water Plant Nos. 14, 15, and 21. Installation of electrical conduit, electrical panels and instrumentation panels at Conroe Water Plant Nos. 20, 21 and 22 was completed. (See Exhibit 11, Page 62)

**Surface Water Receiving Facilities—South** - Contractor continued installation of storm sewer facilities at SJRA Water Plant Nos. 1 and 5, and began Flow Control Pressure Station (FPCS) building pad at SJRA Water Plant No. 2. Contractor continued indoor conduit for the FPCS building and continued installation of surface water piping and underground electrical ductbank at Southern Montgomery County MUD No. 2. (See Exhibit 11, Page 64)

### **2.5 SURFACE WATER FACILITY CONSTRUCTION PROGRESS AND PROJECT DATA**

**Raw Water Intake** - The contractor completed the installation and welding of discharge piping and supports along bridge and the installation of the metal roofing. Contractor began manufacturer field testing of electrical gear

and continued installation of supports and conduit for power, lighting, and instruments in the pump and mechanical rooms.

**Surface Water Treatment Plant** - Construction activities continue at the Operations, Chemical, Power Supply, Generator, Pretreatment, Membrane, Backwash Equalization, Process Water Recovery Basin, Belt Filter Press Building, Blower Building, and GAC facilities. Electrical power, data, and lighting conduit installation continues at the structures. Coatings, roofing, structure decking, and masonry activities are still occurring on the site this month. Testing and commissioning the electrical and mechanical equipment began. Process piping installation continues at the GAC. Membrane racks, pumps and process piping continues at the Membrane Building. Mechanical, plumbing, masonry, interior metal framing, and fire protection system continue at the Operations Building.

**High Service Pump Station** - Contractor began installation of suction and discharge piping, supports and ball valves. Continued installation of electrical conduit and cable support, electrical equipment, HVAC, plumbing, coatings and cathodic protection.

**Ground Storage Tanks** - No major work occurred at the Ground Storage Tanks this month.

**Site Work** - Large diameter yard piping, potable water piping, sanitary sewer, manholes, junction boxes, and drain line installation continue to progress. Electrical duct bank installation and encasement continue. Contractor completed the installation of the 48-inch raw water pipe down the back side of the dam.

The chart below represents Surface Water Facilities progress through the month of July.

Name of Project	Contracted Amount	Invoiced To Date	% Complete Based on Invoice
Surface Water	\$190,704,740	\$132,709,131.00	70%

## 3.0 PROCUREMENT

### 3.1 SOLICITATIONS

No advertisements for solicitations occurred this month.

### 3.2 CONTRACTS/AGREEMENTS/WORK ORDER APPROVALS

No contracts, agreements, or work orders were presented this month.

### 3.3 PROCESS AND PROCEDURES

The GRP Program will utilize traditional procurement methods for consultant services and alternative project delivery methods in the procurement of contractor services, if those services are required.

### 3.4 LOOK AHEAD

The following list provides a very general look ahead at known and anticipated GRP Program professional services and construction contractor solicitations, contract awards, agreements, and/or contract/work order amendments. Solicitations may be combined, modified, or canceled, or time frames may be modified as deemed necessary.

- Work Order No. 16 for Final Transient Analysis
- Letter of Intent for Reforestation of Vegetation with The Woodlands Township for Reforestation
- Supplemental Agreement to GRP Contract with Southern Montgomery County MUD
- Supplemental Agreement to GRP Contract with City of Conroe
- Amendment No. 1 to Work Order No. 12 for revised scope of services for the development and implementation of site specific operational and control plans for Water Receiving Facilities
- Contract for construction of Water Transmission Line Segment W3D



*Construction staking along Segment W3A site*

## 4.0 COST REPORT AND FINANCIAL CONSIDERATIONS

### 4.1 GRP PROGRAM AND GRP PROJECT CIP BUDGET(S)

Through this month the GRP Program remains under its construction cost estimate of \$500,000,000, and forecasts continue to indicate it will be completed under budget (see also subsection 4.6 and [Exhibit 2](#)). A summary of the GRP Program's CIP budget and cost considerations as reported to the GRP Review Committee and the SJRA Board of Directors is provided as attached [Exhibit 2](#).

A summary of the SJRA GRP Division's Fiscal Year 2014 operating budget (revenue and expenditures) for the month of July is provided as [Exhibit 8](#). The budget includes all normal and customary expenses for operating a utility-based, non-profit business, including debt service, and is developed annually for approval by the SJRA Board of Directors.

The SJRA Board of Directors has authorized bond funding for the GRP Program in the amount of \$552,250,358.49 (Net \$479,743,492.79); see also [Exhibit 4](#). This funding allows the SJRA to secure all of the resources required to perform professional services, construction services, and procure long lead time equipment during the design phase of the GRP Program.

### 4.2 FINANCIAL REPORTS

[Exhibit 5](#) illustrates the funding sources presently applied towards the GRP Program CIP budget.

- 1.) TWDB Water Infrastructure Fund (WIF)
- 2.) The sale of open market Special Project Revenue Bonds, Series 2011
- 3.) TWDB Dfund, Series 2011A
- 4.) TWDB Dfund, Series 2012
- 5.) TWDB Dfund, Series 2012A
- 6.) TWDB Dfund, Series 2013
- 7.) Operating Cash

Contracted commitments are summarized in Table 4.1 for the month of July.

The GRP Program's funding and forecasted expenditures are further detailed in attached [Exhibits 2, 3 and 4](#).

Please note that financial reports do not include investment income.

### 4.3 INVOICES/APPLICATIONS FOR PAYMENT

The table below represents the GRP Program Consultant Invoices and/or Construction Contractor Applications for Payment paid through the end of the report month (Item F).

Table 4.1 - GRP Program Funding and Contracted Commitments Summary			
	Previous 6/30/2014	July 2014 Activity	Year to Date (Thru 7/31/14)
<b>A. Approved Funding</b>	552,633,856.78	3,881.29	552,637,738.07
<b>B. Available Funding After Costs</b>	480,129,520.16	3,881.29	480,133,401.45
<b>C. Approved Contracts</b>			
Phase I	465,061,173.38	3,881.29	465,065,054.67
Extensions	772,269.00	0	772,269.00
<b>D. Project Close Out</b>			
Phase I	(870,943.89)	(178,081.51)	(1,049,025.40)
Extensions	0	0	0
<b>E. Uncontracted Funding</b>	15,167,021.67	178,081.51	15,345,103.18
<b>F. Invoices Paid *</b>			
Phase I	292,784,043.80	15,814,228.07	308,598,271.87
Extensions	72,907.31	48,773.56	121,680.87
<b>G. Remaining Funds *</b>	187,272,569.05	(15,859,120.34)	171,413,448.71

\*Invoices Paid -Figures reflect actual funds paid out as of period end dates noted.

\*Remaining Funds-Excludes net investment income

## 4.0 COST REPORT AND FINANCIAL CONSIDERATIONS (CONTINUED)

### 4.4 CONTRACT AMENDMENTS AND CHANGE ORDERS

Each of the GRP Program contracts, agreements and work orders listed in Section 3.2 were presented at the GRP Review Committee and the SJRA Board of Directors meetings this month. The following items were authorized by the SJRA Board of Directors for execution by the SJRA General Manager.

- No contract amendments or change orders were presented to the SJRA Board of Directors this month

### 4.5 CLAIMS

If and when claims are received, they will be addressed by the GRP Program Team.

### 4.6 CIP CASH FLOW

The GRP Program CIP cash flow through calendar year 2015 reflects known expenditures through this month as seen in Table 4.1. Estimates for future expenditures are included in [Exhibit 2](#). All active and currently identified future GRP Program projects and initiatives are included in the cash flow. A graph of forecasted monthly expenditures from the referenced cash flow is attached as [Exhibit 3](#).

### 4.7 CIP BUDGET ESTIMATES AT COMPLETION

#### 4.7.1 GRP Program

The **total gross funds** (including capitalized interest) required to execute Phase I of the GRP Program are currently estimated at \$564,335,358.49. Additionally, all current GRP Program contracts, including their respective SJRA Board of Director's approved budgeted amounts are listed in [Exhibit 6](#).

#### 4.7.2 GRP Projects

The GRP Program projects remained within their approved contract budgets this month. [Exhibit 6](#) indicates each active GRP Program project and GRP Program contract.

### 4.8 LAND ACQUISITION

The GRP Program Team, with the support of its various land acquisition consultants, are in the final stages of acquiring land and easements necessary for the surface water transmission system. A total of fourteen easements involving two property owners still remain to be finalized. Negotiations to acquire the remaining easements are at or near final stages of completion. A cumulative summary of easement acquisition activity is provided in [Exhibit 7](#).



*Resodding on slope of dam below the Raw Water Intake*

## 5.0 QUALITY ASSURANCE

### 5.1 FINAL DESIGN

Final design is complete for Surface Water Treatment Plant, Transmission Lines, Standpipe, Fiber Optic Communications Network, and Water Receiving Facilities. Design of permanent access road is underway and the site landscaping will occur in the future.

### 5.2 PRE-CONSTRUCTION

There were no pre-construction meetings held this month.

### 5.3 CONSTRUCTION

Quality Assurance efforts by SJRA construction inspectors, as well as the CA&I consultant continued this month on the SWF project. Virtually every building on the SWF project site is progressing timely toward meeting the established SWF substantial completion date. Quality Assurance efforts include regular visits to the project site to monitor and document observed progress. Similar Quality Assurance efforts by SJRA construction inspectors and the CM&I consultant continued this month on the transmission lines.



*Left: Pumps and filtration at the Membrane Building  
Above: Standpipe tank panel installation at Conroe Water Plant No. 21*

## 6.0 EXHIBITS

**Exhibit 1**—GRP Program Schedule

**Exhibit 2**—GRP Program Estimate-At-Completion

**Exhibit 3**—GRP Program Monthly Forecasted Expenditures

**Exhibit 4**—GRP Program Fund Data

**Exhibit 5**—Monthly GRP Program Funding Report

**Exhibit 6**—GRP Program Current Authorizations

**Exhibit 7**—Land Acquisition Summary

**Exhibit 8**—GRP Schedule of Revenues & Expenses—Actual & Budget

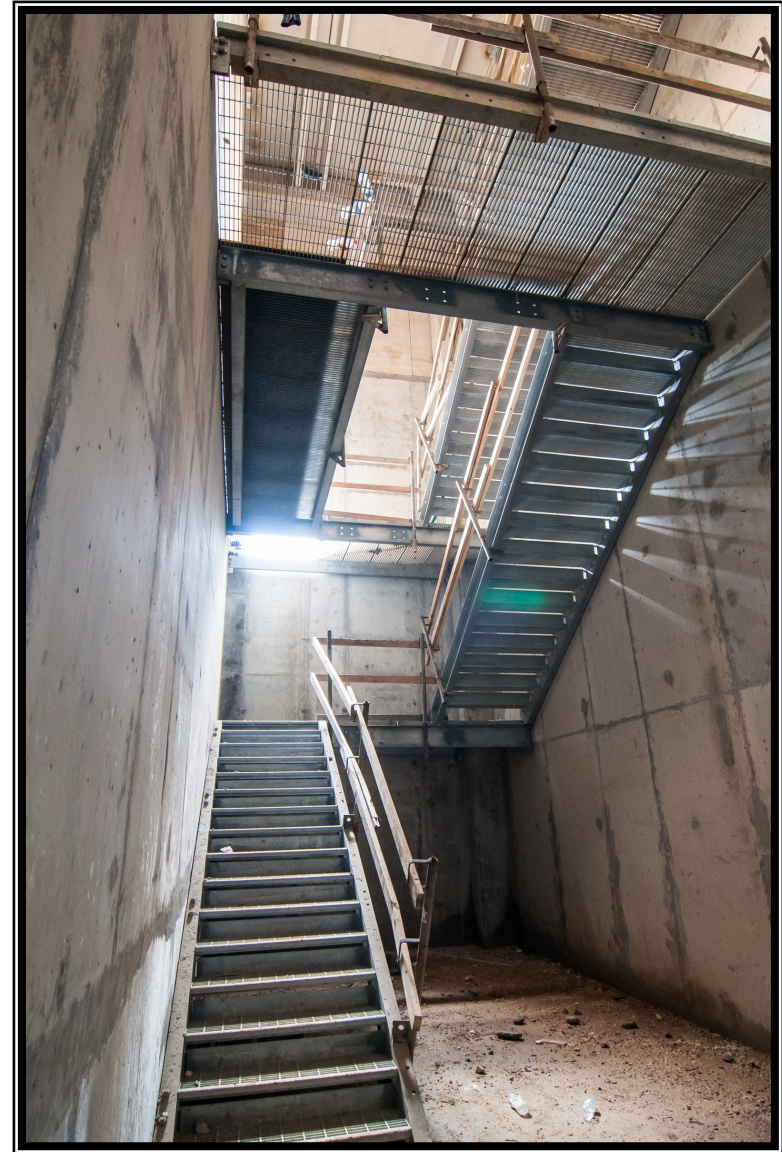
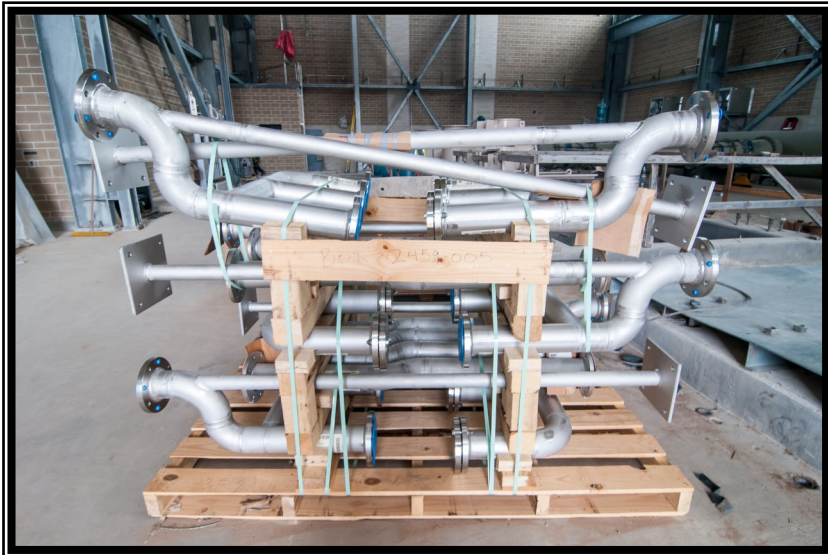
**Exhibit 9**—GRP Program Monthly Meeting Log

**Exhibit 10**—Surface Water Facilities (SWF) Construction Photos

**Exhibit 11**—Transmission Line System Construction Photos

**Exhibit 12**—Surface Water Standpipe Construction Photos

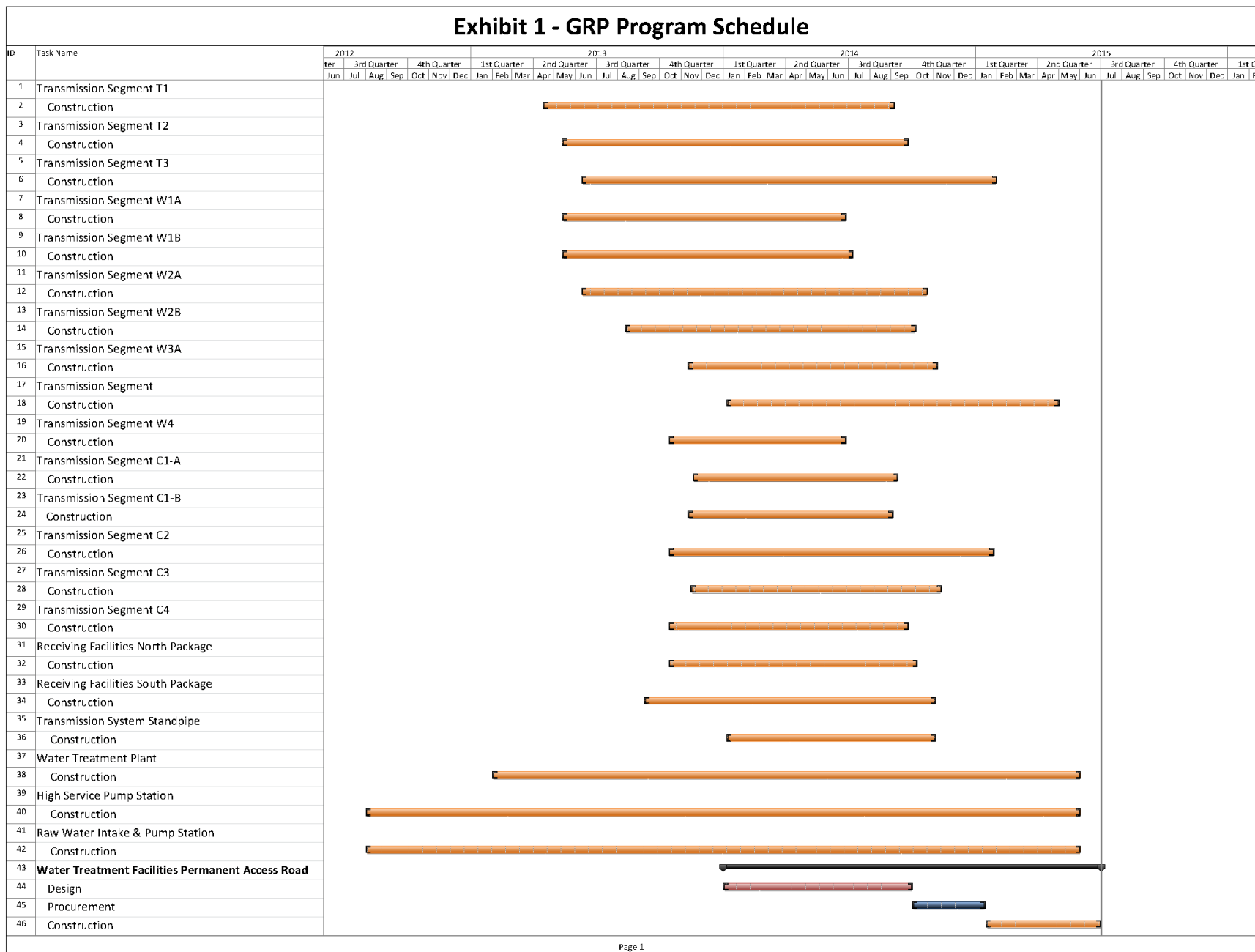
**Exhibit 13**—Fiber Optic Network Communication System



*Left: Piping for air burst cleaning system for the raw water pump screens at the Raw Water Intake  
Above: Stairway down to the pipe gallery in the Granular Activated Carbon (GAC) Building*



## Exhibit 1 - GRP Program Schedule



## Exhibit 2

### GRP Program Estimate-At-Completion As of July 31, 2014

SERVICES	ESTIMATE-AT-COMPLETION
<b>Pre-Engineering Phase Services</b>	<b>\$ 4,702,612</b>
(GRP Development, Environmental Studies, Pilot Plant, Surface Water Treatment Plant Site Survey)	
<b>Engineering Phase Services</b>	<b>\$ 43,881,899</b>
(Planning, Preliminary Engineering, Final Engineering, Geotechnical, Survey, Metes & Bounds, Subsurface Utility Investigation, Environmental)	
<b>Construction Phase Services</b>	<b>\$ 28,824,257</b>
(Engineering Services During Construction, Construction Management & Inspection [Transmission System], Construction Administration & Inspection [SWF], Material Testing)	
<b>Construction</b>	<b>\$ 388,244,571</b>
(Surface Water Transmission System, Raw Water Intake and Pump Station, Surface Water Treatment Plant, High Service Pump Station and Ground Storage Tanks, Surface Water Receiving Facilities, Infrastructure, Buildings, Roadways, Site Security, Access Roadways)	
Transmission Segment C1 - Construction	\$ 4,521,175
Transmission Segment C2 - Construction	\$ 9,114,837
Transmission Segment C3 - Construction	\$ 5,220,931
Transmission Segment C4 - Construction	\$ 5,371,167
Transmission Segment T1 - Construction	\$ 14,884,986
Transmission Segment T2 - Construction	\$ 13,575,718
Transmission Segment T3 - Construction	\$ 11,393,194
Transmission Segment W1 - Construction	\$ 15,435,545
Transmission Segment W2 - Construction	\$ 33,101,858
Transmission Segment W3 - Construction	\$ 16,804,928
Transmission Segment W4 - Construction	\$ 3,656,604
Transmission System Standpipe	\$ 2,471,884
Receiving Facilities - Construction	\$ 16,397,714
Surface Water Facilities CMAR (GMP)	\$ 190,704,740
Transmission System Fiber Optic - Construction	\$ 3,029,704
Permanent Access Roadway Construction	\$ 7,505,000
Building No. 1; Access Road; Vegetative Buffer; Construction Materials Testing; SWF Site Vegetation Management; Sanitary Sewer/Access Rd. Relocation	\$ 4,399,773
Other Offsite Construction (Transmission Line Utility Relocations, Receiving Facility Improvements)	\$ 25,098,015
Non-Project Specific Contingency	\$ 5,556,799
<b>Program Management</b>	<b>\$ 10,940,954</b>
(GRP Program Management, Survey, Geotechnical, Transient, Corrosion, Legal Consultants)	
<b>Land Acquisition</b>	<b>\$ 13,908,302</b>
(Legal, Appraisal, Title Research, Land Acquisition Consultants) <sup>(1)</sup>	
<b>Total <sup>(2)</sup>:</b>	<b>\$ 490,502,595</b>

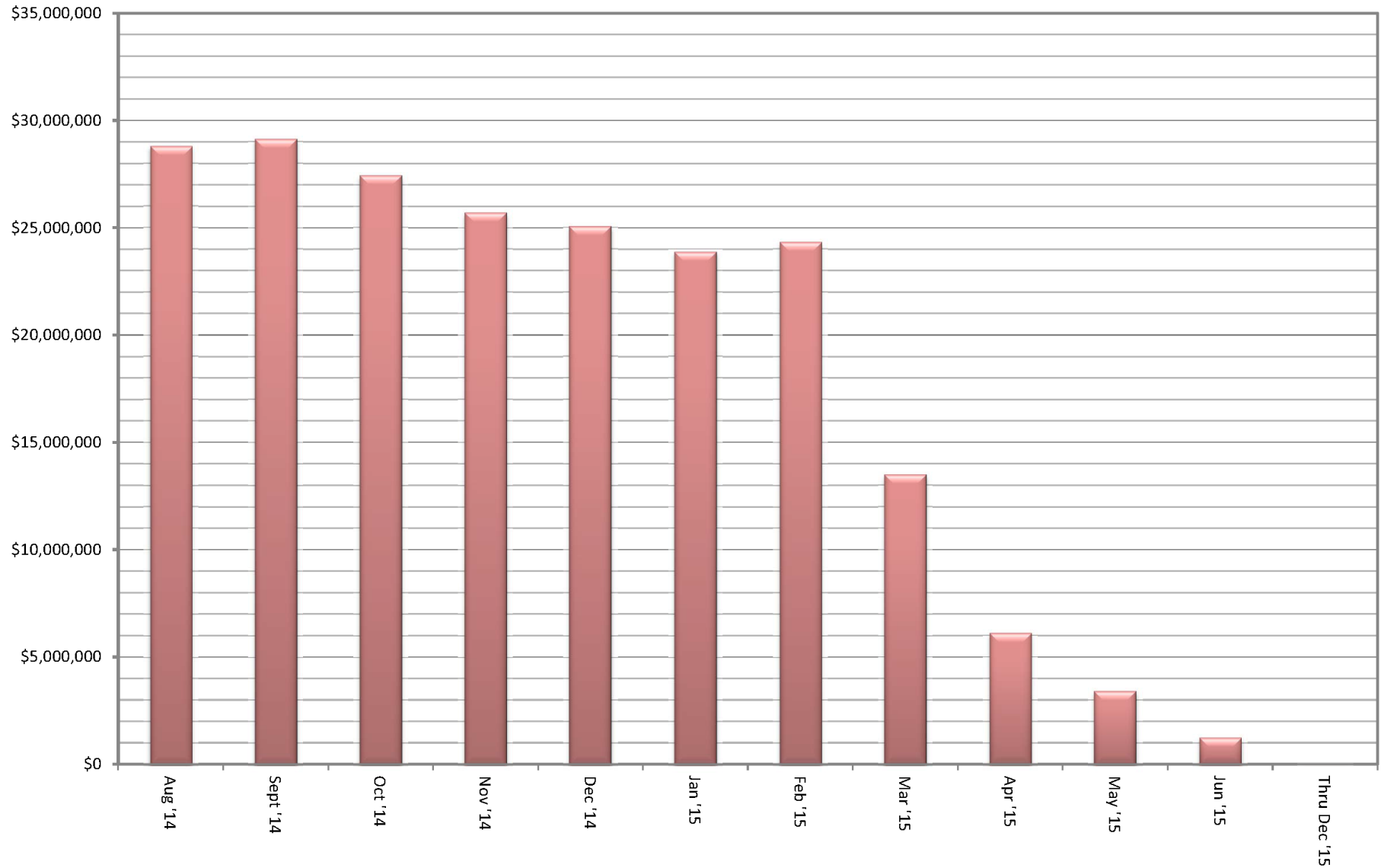
<sup>(1)</sup> Includes revisions to land acquisition cost estimates, land cost, and recategorizing of contingency.

<sup>(2)</sup> Bond issuance costs are not included.



### Exhibit 3

## GRP Program Monthly Forecasted Expenditures As of July 31, 2014



## Exhibit 4

### GRP Program Fund Data As of July 31, 2014

Funding Source	Amount Authorized by Board To-Date	Interest Rate	Bond Costs	Capitalized Interest	Debt Service Reserve Fund	Net Amount Currently Available	Pending Funding Source
TWDB WIF Bond Issue	\$ 21,500,000.00	.854% - 2.706%	\$ 470,337.08	\$ -	\$ -	\$ 21,029,662.92	
Open Market Bond Issue (Series 2011)	\$ 83,430,358.49	3% - 5.25%	\$ 2,049,764.39	\$ 7,858,241.52	\$ -	\$ 73,522,352.58	
TWDB DFund Series 2011A	\$ 67,470,000.00	1.22% - 4.97%	\$ 751,195.33	\$ 5,166,233.00	\$ 3,859,151.00	\$ 57,693,420.67	
TWDB DFund Series 2012	\$ 175,000,000.00	1.17% - 4.62%	\$ 971,769.13	\$ 12,869,175.00	\$ -	\$ 161,159,055.87	
TWDB DFund Series 2012A	\$ 165,000,000.00	1.26% - 4.62%	\$ 952,269.99	\$ 14,139,669.00	\$ 16,500,000.00	\$ 133,408,061.01	
TWDB Dfund Series 2013	\$ 39,850,000.00	4.50%	\$ 631,279.08	\$ 3,214,292.00	\$ 3,073,489.18	\$ 32,930,939.74	
<b>Subtotal Approved Amounts</b>	<b>\$ 552,250,358.49</b>		<b>\$ 5,826,615.00</b>	<b>\$ 43,247,610.52</b>	<b>\$ 23,432,640.18</b>	<b>\$ 479,743,492.79</b>	
Future Series 2015 (Est.)	\$ 12,085,000.00	4.54%	\$ 321,200.00	\$ 1,004,698.00	\$ -	\$ -	\$ 10,759,102.00
<b>Subtotal Future Amounts</b>	<b>\$ 12,085,000.00</b>		<b>\$ 321,200.00</b>	<b>\$ 1,004,698.00</b>	<b>\$ -</b>	<b>\$ -</b>	<b>\$ 10,759,102.00</b>
<b>Totals</b>	<b>\$ 564,335,358.49</b>		<b>\$ 6,147,815.00</b>	<b>\$ 44,252,308.52</b>	<b>\$ 23,432,640.18</b>	<b>\$ 479,743,492.79</b>	<b>\$ 10,759,102.00</b>

Notes:

1. These values do not include investment income.
2. Green items are estimates only.
3. Series 2011 bond costs include \$681,132.45 for bond insurance and \$459,709.50 for underwriter's discount.



# Exhibit 5

## Monthly GRP Program Funding Report

### Fiscal Year 2014

### Through July 31, 2014

	TWDB WIF Bond Issue	Open Market Bond Issue (Series 2011)	TWDB Dfund (Series 2011A)	TWDB Dfund (Series 2012)	TWDB Dfund (Series 2012A)	TWDB Dfund (Series 2013)	Operating (Cash)	Contributions from MUDs	Totals
<b>A. Program Budget</b>									
Bond Issue Amount	\$ 21,500,000.00	\$ 83,430,358.49	\$ 67,470,000.00	\$ 175,000,000.00	\$ 165,000,000.00	\$ 39,850,000.00			\$ 552,250,358.49
Operating Funds Commitment							\$ 93,379.58		\$ 93,379.58
Contributions from MUDs								\$ 294,000.00	\$ 294,000.00
<b>Total Investment</b>	<b>\$ 21,500,000.00</b>	<b>\$ 83,430,358.49</b>	<b>\$ 67,470,000.00</b>	<b>\$ 175,000,000.00</b>	<b>\$ 165,000,000.00</b>	<b>\$ 39,850,000.00</b>	<b>\$ 93,379.58</b>	<b>\$ 294,000.00</b>	<b>\$ 552,637,738.07</b>
<b>B. Contracted Costs</b>									
<b>Phase I</b>									
Contracts Completed	\$ 18,021,227.84	\$ 20,015,266.60	\$ 7,865,823.58	\$ -	\$ 611,352.00	\$ 3,721,564.70	\$ 14,407.80	\$ -	\$ 50,249,642.52
Current Contract Values	\$ 2,989,914.00	\$ 40,248,219.34	\$ 48,177,881.58	\$ 161,159,055.87	\$ 126,734,895.11	\$ 27,824,525.48	\$ 78,971.78	\$ -	\$ 407,213,463.16
Change Orders	\$ -	\$ 4,632,181.12	\$ 720,627.80	\$ -	\$ 2,249,140.07	\$ -	\$ -	\$ -	\$ 7,601,948.99
Project Close Out	\$ (325,378.77)	\$ (563,260.03)	\$ (95,734.73)	\$ -	\$ (64,626.72)	\$ (25.15)	\$ -	\$ -	\$ (1,049,025.40)
<b>Phase I Total:</b>	<b>\$ 20,685,763.07</b>	<b>\$ 64,332,407.03</b>	<b>\$ 56,668,598.23</b>	<b>\$ 161,159,055.87</b>	<b>\$ 129,530,760.46</b>	<b>\$ 31,546,065.03</b>	<b>\$ 93,379.58</b>	<b>\$ -</b>	<b>\$ 464,016,029.27</b>
<b>Extensions</b>									
Contracts Completed	\$ -	\$ -	\$ -	\$ -	\$ -	\$ -	\$ -	\$ -	\$ -
Current Contract Values	\$ -	\$ 772,269.00	\$ -	\$ -	\$ -	\$ -	\$ -	\$ -	\$ 772,269.00
Change Orders	\$ -	\$ -	\$ -	\$ -	\$ -	\$ -	\$ -	\$ -	\$ -
Project Close Out	\$ -	\$ -	\$ -	\$ -	\$ -	\$ -	\$ -	\$ -	\$ -
<b>Extensions Total:</b>	<b>\$ -</b>	<b>\$ 772,269.00</b>	<b>\$ -</b>	<b>\$ -</b>	<b>\$ -</b>	<b>\$ -</b>	<b>\$ -</b>	<b>\$ -</b>	<b>\$ 772,269.00</b>
<b>C. Expenditures</b>									
<b>Phase I</b>									
Paid Previous Fiscal Years	\$ 20,445,604.55	\$ 41,810,521.31	\$ 13,516,375.89	\$ 35,745,194.60	\$ 2,741,339.59	\$ -	\$ -	\$ -	\$ 114,259,035.94
Paid Current Fiscal Year	\$ 153,812.07	\$ 6,806,611.96	\$ 24,171,240.45	\$ 69,012,895.41	\$ 83,629,930.98	\$ 10,480,163.54	\$ 84,581.52	\$ -	\$ 194,339,235.93
<b>Phase I Total:</b>	<b>\$ 20,599,416.62</b>	<b>\$ 48,617,133.27</b>	<b>\$ 37,687,616.34</b>	<b>\$ 104,758,090.01</b>	<b>\$ 86,371,270.57</b>	<b>\$ 10,480,163.54</b>	<b>\$ 84,581.52</b>	<b>\$ -</b>	<b>\$ 308,598,271.87</b>
<b>Extensions</b>									
Paid Previous Fiscal Years	\$ -	\$ -	\$ -	\$ -	\$ -	\$ -	\$ -	\$ -	\$ -
Paid Current Fiscal Year	\$ -	\$ 121,680.87	\$ -	\$ -	\$ -	\$ -	\$ -	\$ -	\$ 121,680.87
<b>Extensions Total:</b>	<b>\$ -</b>	<b>\$ 121,680.87</b>	<b>\$ -</b>	<b>\$ -</b>	<b>\$ -</b>	<b>\$ -</b>	<b>\$ -</b>	<b>\$ -</b>	<b>\$ 121,680.87</b>
Issuance Costs	\$ 470,337.08	\$ 2,049,764.39	\$ 751,195.33	\$ 971,769.13	\$ 952,269.99	\$ 628,750.00	\$ -	\$ -	\$ 5,824,085.92
Debt Service Reserve Fund	\$ -	\$ -	\$ 3,859,151.00	\$ -	\$ 16,500,000.00	\$ 3,073,489.18	\$ -	\$ -	\$ 23,432,640.18
Capitalized Interest	\$ -	\$ 7,858,241.52	\$ 5,166,233.00	\$ 12,869,175.00	\$ 14,139,669.00	\$ 3,214,292.00	\$ -	\$ -	\$ 43,247,610.52
<b>D. Remaining</b>									
Uncontracted Funds	\$ 343,899.85	\$ 8,417,676.55	\$ 1,024,822.44	\$ (0.00)	\$ 3,877,300.55	\$ 1,387,403.79	\$ -	\$ 294,000.00	\$ 15,345,103.18
Funding Balance *	\$ 430,246.30	\$ 24,783,538.44	\$ 20,005,804.33	\$ 56,400,965.86	\$ 47,036,790.44	\$ 22,453,305.28	\$ 8,798.06	\$ 294,000.00	\$ 171,413,448.71

\*Excluding net investment income



## Exhibit 6

### GRP Program Current Authorizations As of July 31, 2014

#### Surface Water Transmission System - Consultant Services

Project	Firm	Amount Authorized by Board
T1	Jones & Carter	\$ 2,202,879.75
T2	Klotz Associates	\$ 1,878,727.49
T3	Espey	\$ 1,892,322.47
W1	LAN	\$ 2,729,523.15
W2	Binkley & Barfield	\$ 3,252,056.39
W3	Cobb Fendley	\$ 4,017,012.00
W4	LJA	\$ 1,366,335.57
C1	Dannenbaum	\$ 961,635.69
C2	Schaumburg & Polk	\$ 2,213,465.12
C3	Kimley Horn	\$ 1,355,988.48
C4	RG Miller	\$ 605,208.04
Fiber Optic	EMA	\$ 832,533.04
WRFs	Malcom Pirnie/Arcadis	\$ 2,680,366.57
CM&I	Kellog Brown & Root	\$ 8,657,135.48
<b>Subtotal - Surface Water Transmission System</b>		<b>\$ 34,645,189.24</b>

#### Surface Water Facilities - Consultant Services

Project	Firm	Amount Authorized by Board
WTP	HDR Engineering	\$ 18,775,677.92
HSPS	AECOM	\$ 4,712,513.39
StandPipe	AECOM	\$ 192,235.38
RWI&PS	Freese & Nichols	\$ 3,954,773.35
CA&I	CDMSmith	\$ 5,348,633.00
<b>Subtotal - Surface Water Facilities</b>		<b>\$ 32,983,833.04</b>

#### Program Consultant Services & Other Projects

Project	Firm	Amount Authorized by Board
Program Management	Brown & Gay	\$ 10,695,226.55
Program Survey	Landtech	\$ 514,524.00
Program Geotechnical	Raba Kistner	\$ 145,260.00
Prog Transient Analyses	AECOM	\$ 4,904,748.77
Access Rd/Misc Service	ACES	\$ 857,366.25
SWF Surveying	S&V Surveying	\$ 66,875.00
Land Acq	KDM	\$ 431,592.70
Land Acq	PAS	\$ 1,413,334.88
Program Environmental	Half Associates	\$ 1,063,698.87
Program Fiber Optics	EMA	\$ 832,533.04
Program Corrosion	V&A Consulting Engineers	\$ 866,676.00
Program Legal Services & Projects	Multiple	\$ 5,929,235.44
<b>Subtotal - Program Consultant Services &amp; Other Projects</b>		<b>\$ 27,721,071.50</b>

#### Surface Water Transmission System Extensions - Consultant Services

Project	Firm	Amount Authorized by Board
MUD99/115	IDS Engineering Group	\$ 293,710.00
MUD99/115	Andrews & Kurth - x	\$ 100,000.00
MUD99/115	PAS - x	\$ 200,000.00
MUD99/115	Arcadis - x	\$ -
MUD99/115	V&A Consulting Engineers - x	\$ -
MUD99/115	Brown & Gay - x	\$ 121,216.00
<b>Subtotal - Surface Water Transmission System Extensions</b>		<b>\$ 714,926.00</b>



## Exhibit 6 (con't)

### GRP Program Current Authorizations As of July 31, 2014

#### Active or Completed Construction Contracts

Project	Firm	Amount Authorized by Board
GRP Bldg No. 1	Brookstone	\$ 2,008,673.00
Bldg No. 1/Aqua Tx CMT	Aviles Engineering	\$ 123,814.55
Landscape Buffer	Key-Scape Landscape	\$ 53,090.00
Temp Access Road	Lindsey Construction	\$ 977,583.60
Access Road CMT	Terracon Consultants	\$ 10,359.70
Access Road Overlay and Detention	AAA Asphalt	\$ 412,284.59
Access Road Landscape	TreeScapes	\$ 34,165.00
Aqua Texas Sewer	Randy Roan Construction	\$ 547,341.17
Bldg No. 1 Fiber Line	Preferred Technologies	\$ 231,157.56
Surface Water Plant (CMAR)	McCarthy	\$ 190,704,740.00
SWF CMT	Geotest	\$ 1,976,659.00
Transmission Sytem Utility Relocations	Various	\$ 2,125,610.96
Transmission System CMT (T3, W1, W2, W3, W4)	Aviles	\$ 1,601,330.00
Transmission System CMT (T1, T2, C1, C2, C3, C4)	Terracon	\$ 1,006,711.25
Transmission Segment T1	S.J. Louis Construction of Texas Ltd	\$ 14,521,937.14
Transmission Segment T2	Texas Sterling Construction Company	\$ 13,475,718.33
Transmission Segment T3	S.J. Louis Construction of Texas Ltd	\$ 11,393,193.97
Transmission Segment C1A	Garney Companies, Inc.	\$ 3,837,683.40
Transmission Segment C1B	E.P. Brady, LTD.	\$ 683,491.53
Transmission Segment C2	Garney Companies, Inc.	\$ 9,014,837.00
Transmission Segment C3	E.P. Brady, LTD.	\$ 4,972,314.80
Transmission Segment C4	BRH-Garver Construction, L.P.	\$ 5,115,396.90
Transmission Segment W1A	Huff & Mitchell, Inc.	\$ 8,222,000.50
Transmission Segment W1B	Texas Sterling Construction Company	\$ 7,213,544.50
Transmission Segment W2A	Texas Sterling Construction Company	\$ 16,340,258.02
Transmission Segment W2B	Texas Sterling Construction Company	\$ 16,161,600.00
Transmission Segment W3A	Huff & Mitchell, Inc.	\$ 7,880,207.50
Transmission Segment W3B	Garney Companies, Inc.	\$ 8,124,485.50
Transmission Segment W4	Huff & Mitchell, Inc.	\$ 3,656,604.23
Receiving Facilities South	CSA	\$ 7,127,383.00
Receiving Facilities North	Archer Western	\$ 6,160,184.55
Transmission SCADA - Fiber Optic Construction	Fisk Electric Company	\$ 2,885,432.35
Miscellaneous	Other Construction Contracts, Permits, Fees, etc.	\$ 305,163.05
<b>Subtotal - Construction Contracts</b>		<b>\$ 348,904,956.65</b>

#### Totals

	Amount Authorized by Board
Surface Water Transmission System - Consultant Services	\$ 34,645,189.24
Surface Water Facilities - Consultant Services	\$ 32,983,833.04
Program Consultant Services & Other Projects	\$ 27,721,071.50
Surface Water Transmission System Extensions - Consultant Services	\$ 714,926.00
Active or Completed Construction Contracts	\$ 348,904,956.65
<b>Total</b>	<b>\$ 444,969,976.43</b>



## Exhibit 7

### GRP Program Land Acquisition Summary As of July 31, 2014

Project	Anticipated Number of Easements to Acquire	Easements Acquired This Month	Total Easements Acquired and Filed	Total Easements Remaining to be Finalized <sup>1</sup>
Transmission System Segment T1	59	0	59	0
Transmission System Segment T2	0	0	0	0
Transmission System Segment T3	18	0	18	0
Transmission System Segment C1	19	0	19	0
Transmission System Segment C2	80	0	80	0
Transmission System Segment C3	34	0	21	13
Transmission System Segment C4	4	0	4	0
Transmission System Segment W1	32	0	32	0
Transmission System Segment W2	10	0	10	0
Transmission System Segment W3	177	0	176	1
Transmission System Segment W4	9	0	9	0
Totals:	442	0	428	14

<sup>1</sup> Note: Includes final cleanup of title on other legal issues, while right of entry may have been required





# Exhibit 8

## San Jacinto River Authority Groundwater Reduction Plan

### Schedule of Revenues & Expenses—Actual and Budget For the Eleven Months Ending July 31, 2014

	Jul	Fiscal Year To Date				Fiscal Budget	
	Actual	Actual	Budget	Variance	% Variance	Total Year Budget	Actual YTD % of Total Year Budget
<b>OPERATING REVENUES</b>							
GRP pumping fees	\$ 2,956,054	\$ 26,986,307	\$ 30,301,296	\$ (3,314,989)	(11%)	\$ 34,118,874	79%
<b>TOTAL OPERATING REVENUES</b>	<b>\$ 2,956,054</b>	<b>\$ 26,986,307</b>	<b>\$ 30,301,296</b>	<b>\$ (3,314,989)</b>	<b>(11%)</b>	<b>\$ 34,118,874</b>	<b>79%</b>
<b>OPERATING EXPENSES</b>							
Payroll & employee benefit expenses	\$ 354,511	\$ 2,689,039	\$ 4,279,310	\$ 1,590,272	37%	\$ 4,644,900	58%
Professional fees	12,258	427,704	740,913	313,209	42%	813,000	53%
Purchased & contracted services	3,463	102,806	219,883	117,077	53%	239,871	43%
Supplies, materials & utilities	43,306	3,427,524	3,705,295	277,771	7%	3,747,401	91%
Maintenance repairs, parts & rentals	113	13,309	15,980	2,671	17%	17,160	78%
General & administration	49,423	557,064	777,788	220,724	28%	850,563	65%
<b>TOTAL OPERATING EXPENSES</b>	<b>\$ 463,074</b>	<b>\$ 7,217,445</b>	<b>\$ 9,739,169</b>	<b>\$ 2,521,723</b>	<b>26%</b>	<b>\$ 10,312,895</b>	<b>70%</b>
<b>NON-OPERATING REVENUES &amp; EXPENSES</b>							
Interest on investments	\$ 3,418	\$ 612,357	\$ 638,978	\$ (26,621)	(4%)	\$ 696,936	88%
Other revenues	-	2,129	-	2,129	100%	-	0%
Interest expense	(1,787,500)	(19,563,137)	(13,274,584)	(6,288,554)	47%	(14,844,597)	132%
Capital contributions	-	294,000	-	294,000	100%	-	0%
<b>TOTAL NON-OPERATING (EXCLUDING ITEMS NOT BUDGETED)</b>	<b>\$ (1,784,082)</b>	<b>\$ (18,654,651)</b>	<b>\$ (12,635,606)</b>	<b>\$ (6,019,045)</b>	<b>48%</b>	<b>\$ (14,147,661)</b>	<b>132%</b>
<b>NET INCOME (LOSS) (EXCLUDING ITEMS NOT BUDGETED)</b>	<b>\$ 708,898</b>	<b>\$ 1,114,211</b>	<b>\$ 7,926,521</b>	<b>\$ (6,812,311)</b>	<b>(86%)</b>	<b>\$ 9,658,318</b>	<b>12%</b>
<b>NON-OPERATING REVENUES &amp; EXPENSES (NOT BUDGETED)</b>							
Depreciation	\$ (25,868)	\$ (259,981)	\$ -	\$ (259,981)	100%	\$ -	0%
Amortized debt issuance expense	-	(500)	-	(500)	100%	-	0%
<b>TOTAL NON-OPERATING (NOT BUDGETED)</b>	<b>\$ (25,868)</b>	<b>\$ (260,481)</b>	<b>\$ -</b>	<b>\$ (260,481)</b>	<b>100%</b>	<b>\$ -</b>	<b>0%</b>
<b>NET INCOME (LOSS) (BUDGETED AND NOT BUDGETED)</b>	<b>\$ 683,030</b>	<b>\$ 853,729</b>	<b>\$ 7,926,521</b>	<b>\$ (7,072,792)</b>	<b>(89%)</b>	<b>\$ 9,658,318</b>	<b>9%</b>



## Exhibit 8 (con't)

### GRP Division

#### Clarification of Actual & Budget Variances For Eleven Months Ending July 31, 2014

Category	YTD - Driver	July 2014	FYTD 2014
GRP Pumping Fees	Usage variance due to weather conditions and change in consumer behavior.	(387)	(3,315)
Payroll and related expenses	Budgeted positions not filled as scheduled.	145	1,590
Professional Fees	Professional fees less than budgeted.	54	313
Purchased & Contracted Services	Purchased and contracted services less than budgeted.	16	117
Supplies, Materials, Utilities, Maintenance, Repairs, Parts & Rentals	Fuel, office supplies, phones, recruiting and misc. expenses less than budgeted.	13	258
	Reservation Fee-COH 2013 Actuals	-	(123)
	Additional Water Supply	(14)	143
	Maintenance repairs, parts & rentals expense less than budgeted.	1	3
General & Administration	Allocated labor and related expenses less than budgeted, anticipated a quicker rate of growth than has been actualized.	22	221
Non-Operating	Interest/Investment Income	(54)	(26)
	Other Revenues	-	2
	Bond interest expense	(218)	(6,289)
	Capital Contributions		294
	Depreciation expense	(26)	(260)
	Bond Issuance Cost Amort expense	-	(1)
		<b><u>(448)</u></b>	<b><u>(7,073)</u></b>



## Exhibit 9

### GRP Program Monthly Meeting Log For July 2014

Meeting	Subject of Meeting	Location	Date	Participants
Village of Alden Bridge	GRP Update	Township Office	7/8/2014	SJRA Staff and General Public
GRP Review Committee Meeting	Board Agenda Items	G&A Building	7/21/2014	GRP Review Committee, SJRA Staff and General Public
Fault Line Discussion	Fault Line	Township Office	7/23/2014	SJRA Staff and General Public
SJRA Board of Directors Meeting	Board Agenda Items	G&A Building	7/24/2014	SJRA Board of Directors, SJRA Staff and General Public
CMAR Coordination Meeting	CMAR	GRP Building	Weekly	SJRA Staff, GRP Program Team and Consultant Team
Construction Administration and Inspection Meetings	CA&I	GRP Building	Weekly	SJRA Staff, GRP Program Team and CA&I Team
Water Receiving Facilities-South Progress Meeting	WRF-S	GRP Building	Monthly	Contractor, SJRA Staff, GRP Program Team and Consultant Team
Water Receiving Facilities-North Progress Meeting	WRF-N	GRP Building	Monthly	Contractor, SJRA Staff, GRP Program Team and Consultant Team



## Exhibit 9 (con't)

### GRP Program Monthly Meeting Log For July 2014

Meeting	Subject of Meeting	Location	Date	Participants
Segments W1A, W1B, W2A, W2B, W3A, W3B, and W4 Progress Meetings	Segments W1A, W1B, W2A, W2B, W3A, W3B and W4	GRP Building	Monthly	Contractor, SJRA Staff, GRP Program Team and Consultant Team
Segments T1 and T2 Progress Meetings	Segments T1 and T2	GRP Building	Monthly	Contractor, SJRA Staff, GRP Program Team and Consultant Team
Segment T3 Bi-Weekly Progress Meeting	Segment T3	GRP Building	Bi-Weekly	Contractor, SJRA Staff, GRP Program Team and Consultant Team
Segments C1A, C1B, C2, C3 and C4 Monthly Status Meetings	Segments C1A,C1B, C2, C3 and C4	GRP Building	Monthly	Contractor, SJRA Staff, GRP Program Team and Consultant Team
Standpipe Progress Meeting	Standpipe	GRP Building	Monthly	Contractor, SJRA Staff, GRP Program Team and Consultant
FONCS Monthly Progress Meetings	FONCS	GRP Building	Monthly	Contractor, SJRA Staff, GRP Program Team and Consultant
Surface Water Facility Progress Meeting	Surface Water Facilities	GRP Building	Bi-Monthly	SJRA Staff, CMAR, CA&I and Consultant Team



## Surface Water Facilities Construction Photos



# EXHIBIT 10 SWF Construction Photos



## EXHIBIT 10 (con't) SWF Construction Photos



❶ *Pump assembly and slide gate installation in the Raw Water Intake and Pump Station*

## EXHIBIT 10 (con't) SWF Construction Photos



② *Feed pump and piping installation at the Membrane Building*



## EXHIBIT 10 (con't) SWF Construction Photos



③ *Carbon contactor process piping installation at the Granulated Activated Carbon Building*

## EXHIBIT 10 (con't) SWF Construction Photos



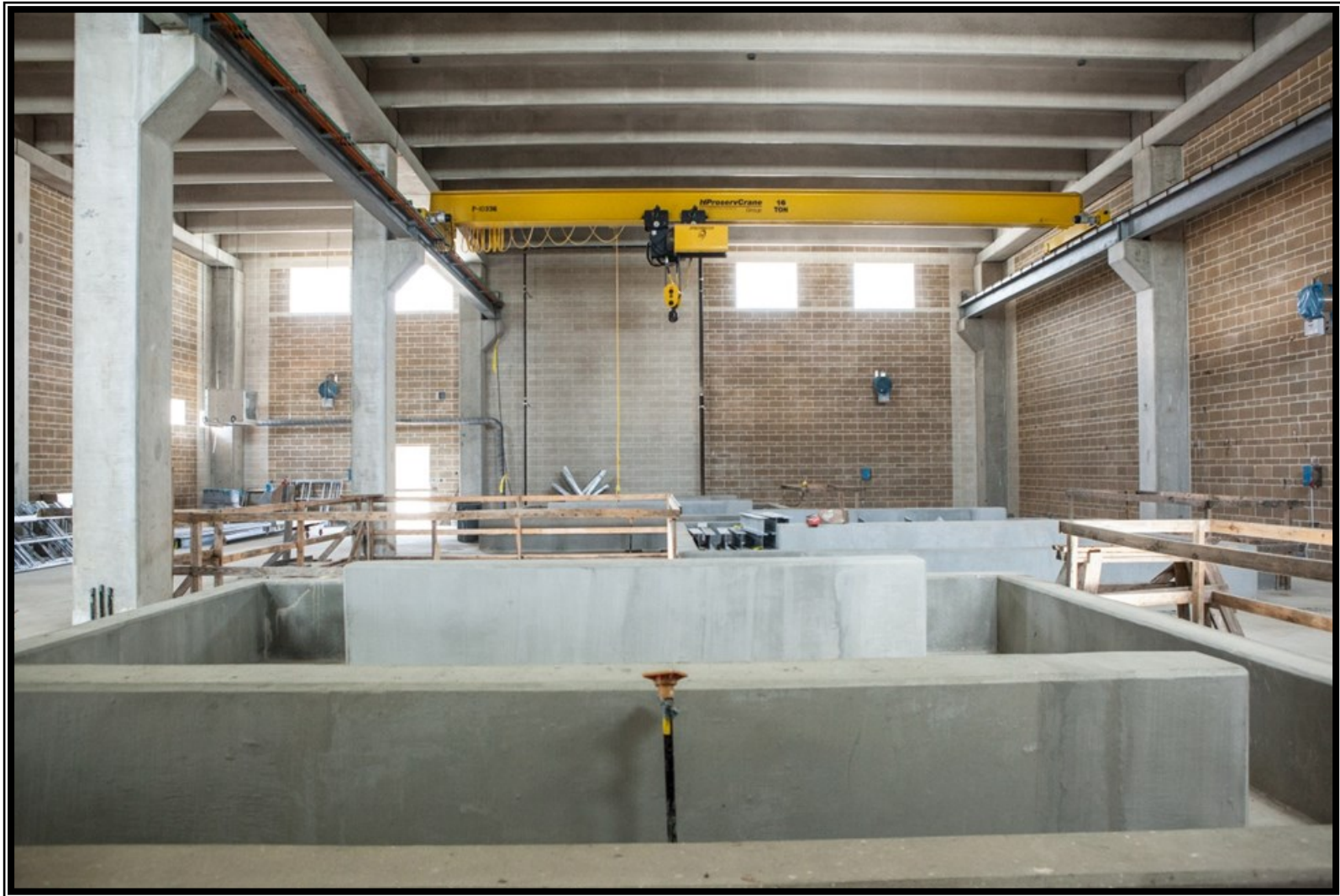
④ *Storage tank installation at the Chemical Building*

## EXHIBIT 10 (con't) SWF Construction Photos



⑤ *Transformer installation (12470 V : 4160 V) at the High Service Pump Station*

## EXHIBIT 10 (con't) SWF Construction Photos



⑥ *Pedestal for belt filter press at the Dewatering Building*

## EXHIBIT 10 (con't) SWF Construction Photos

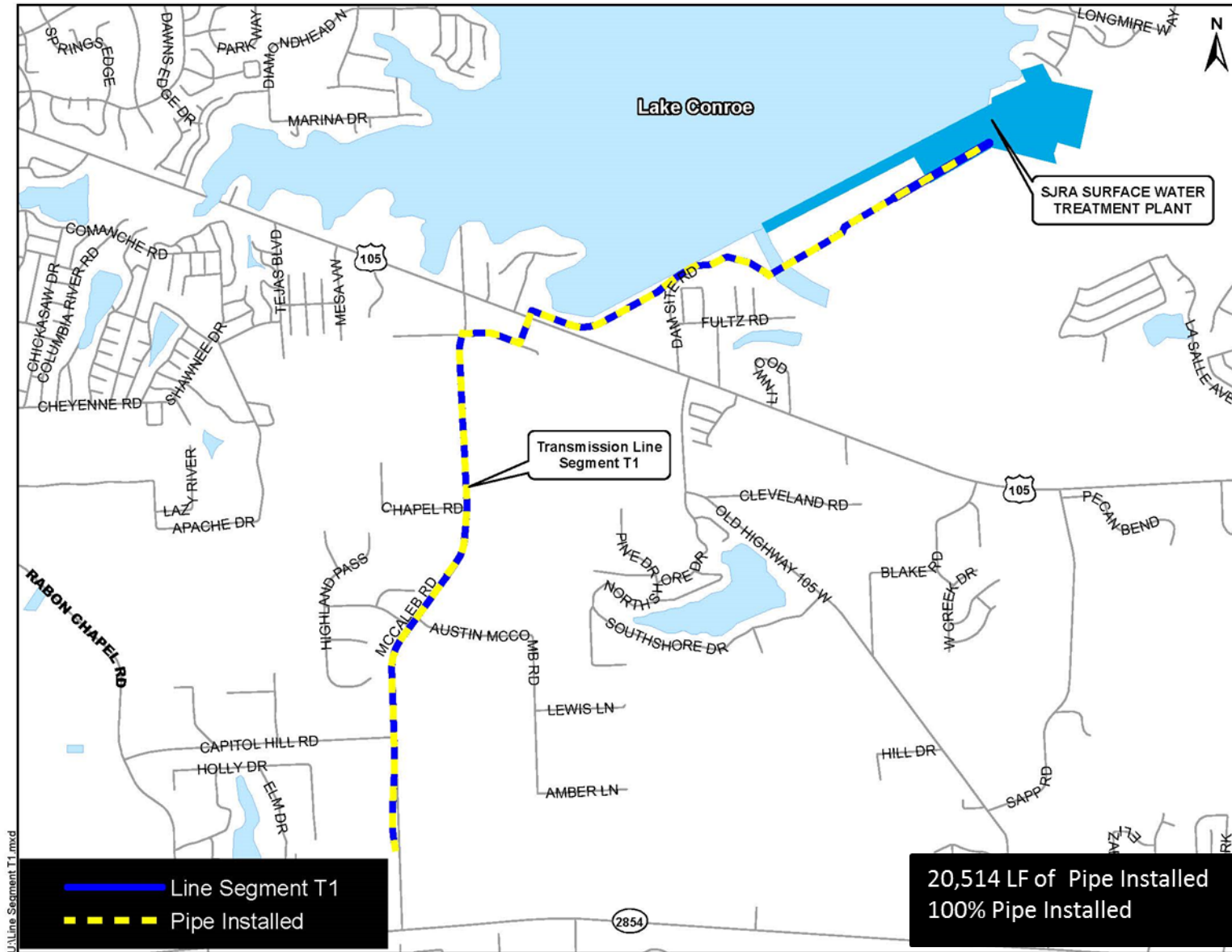


① *Drywall installation and finishing in the Operations Building*

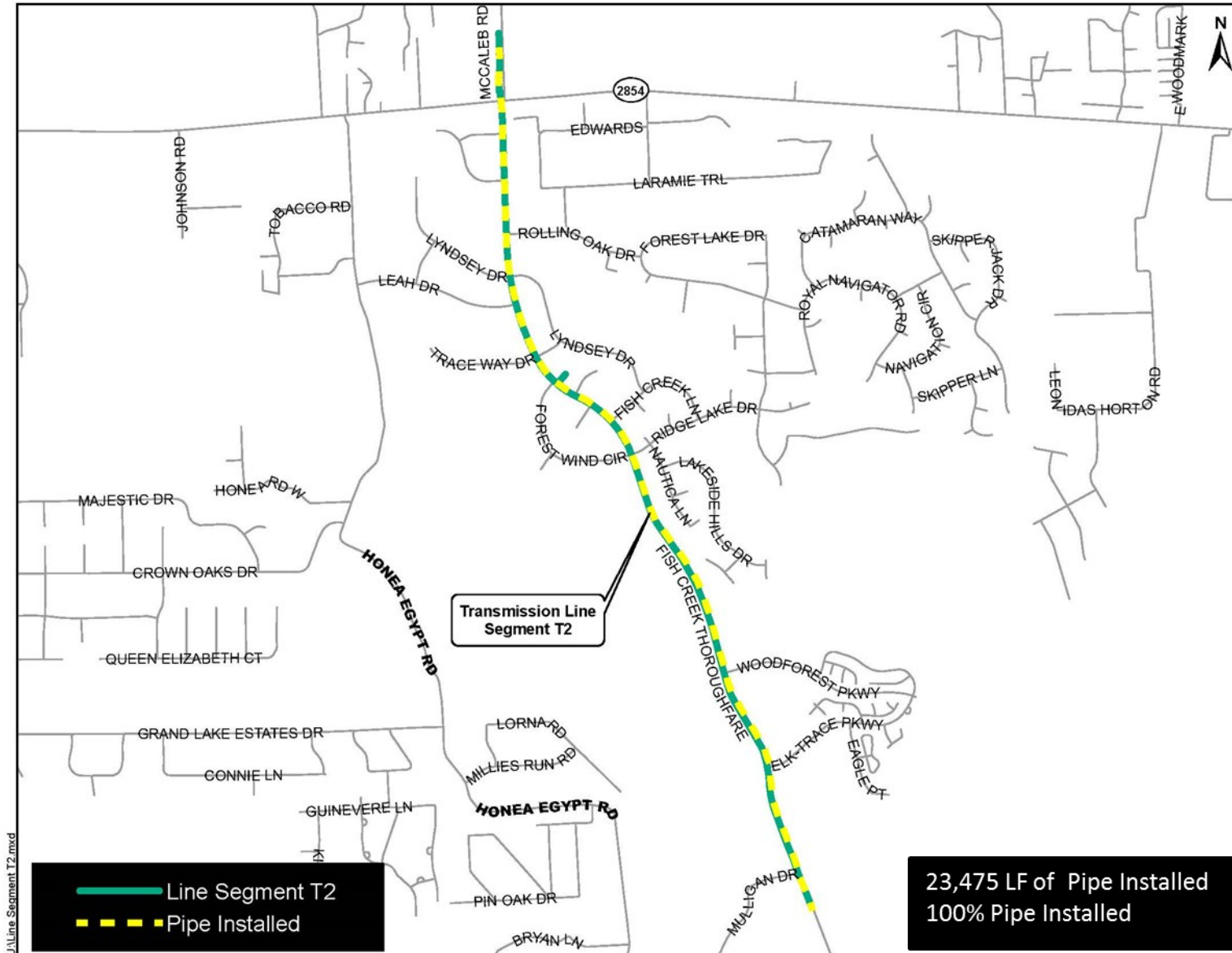
## Transmission Line System Construction Photos



# EXHIBIT 11 Transmission Line System Construction Photos

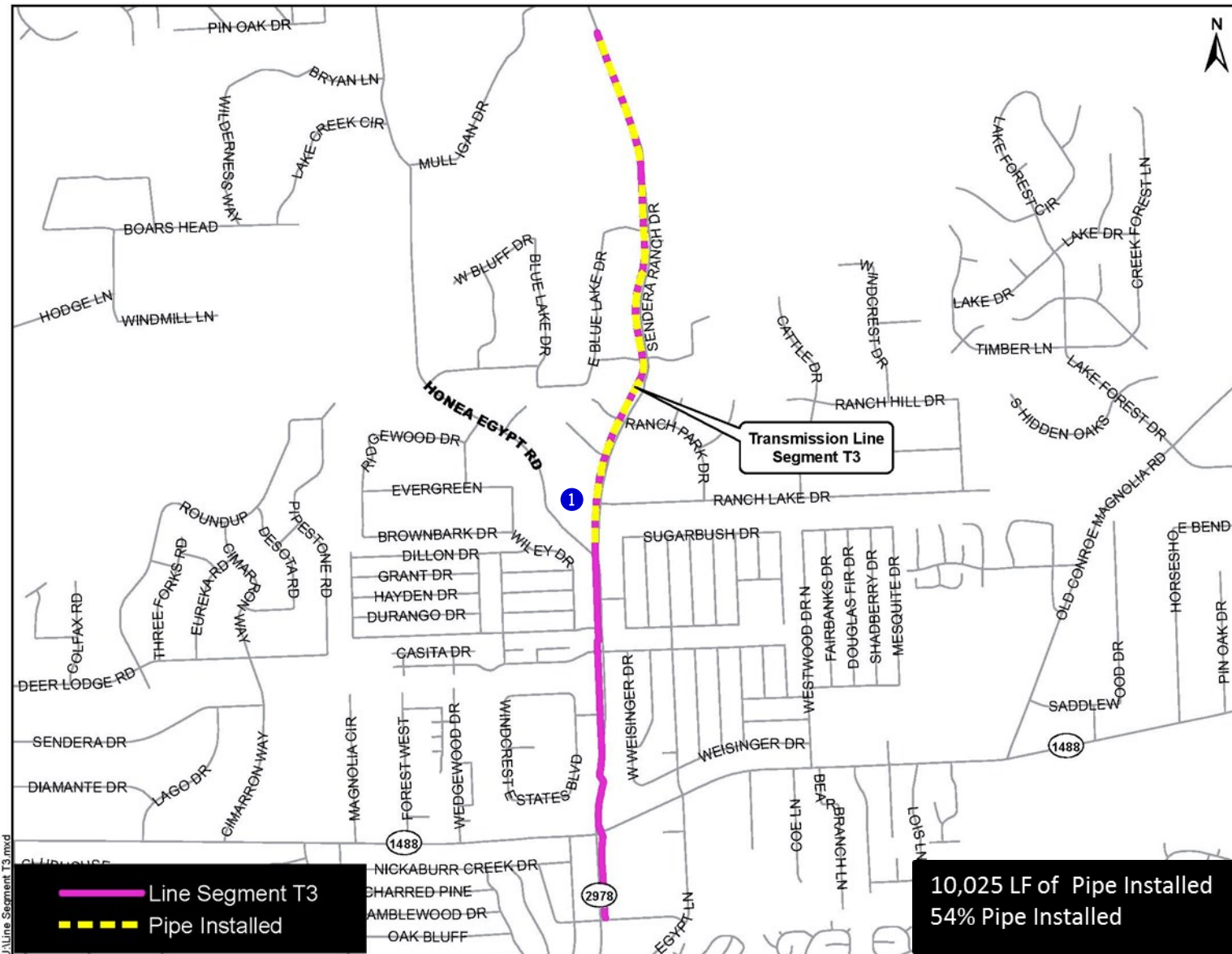


# EXHIBIT 11 (con't) Transmission Line System Construction Photos





# EXHIBIT 11 (con't) Transmission Line System Construction Photos

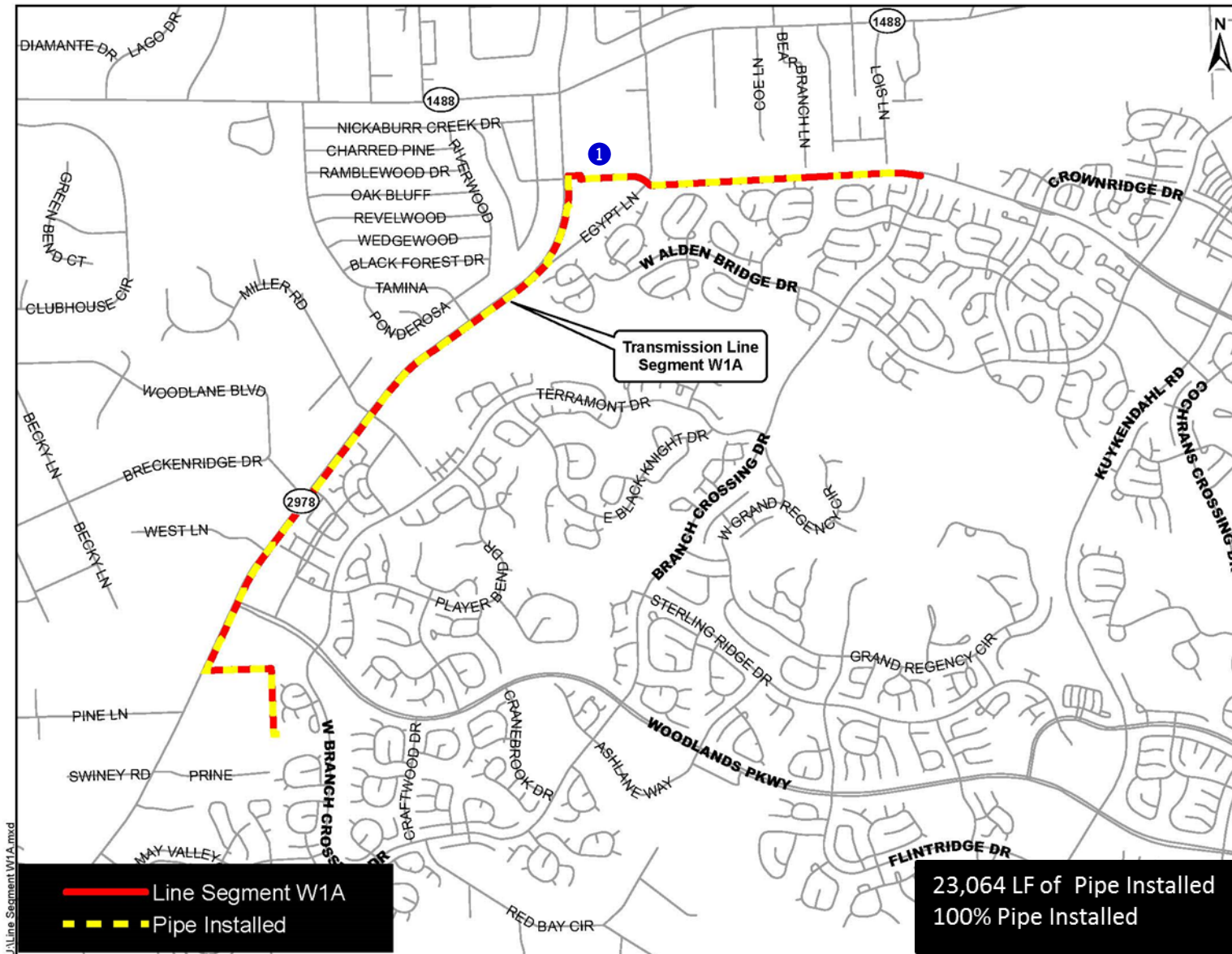


## EXHIBIT 11 (con't) Transmission Line System Construction Photos



① *Segment T3— 54-inch pipe installation along Sendera Ranch Road*

# EXHIBIT 11 (con't) Transmission Line System Construction Photos

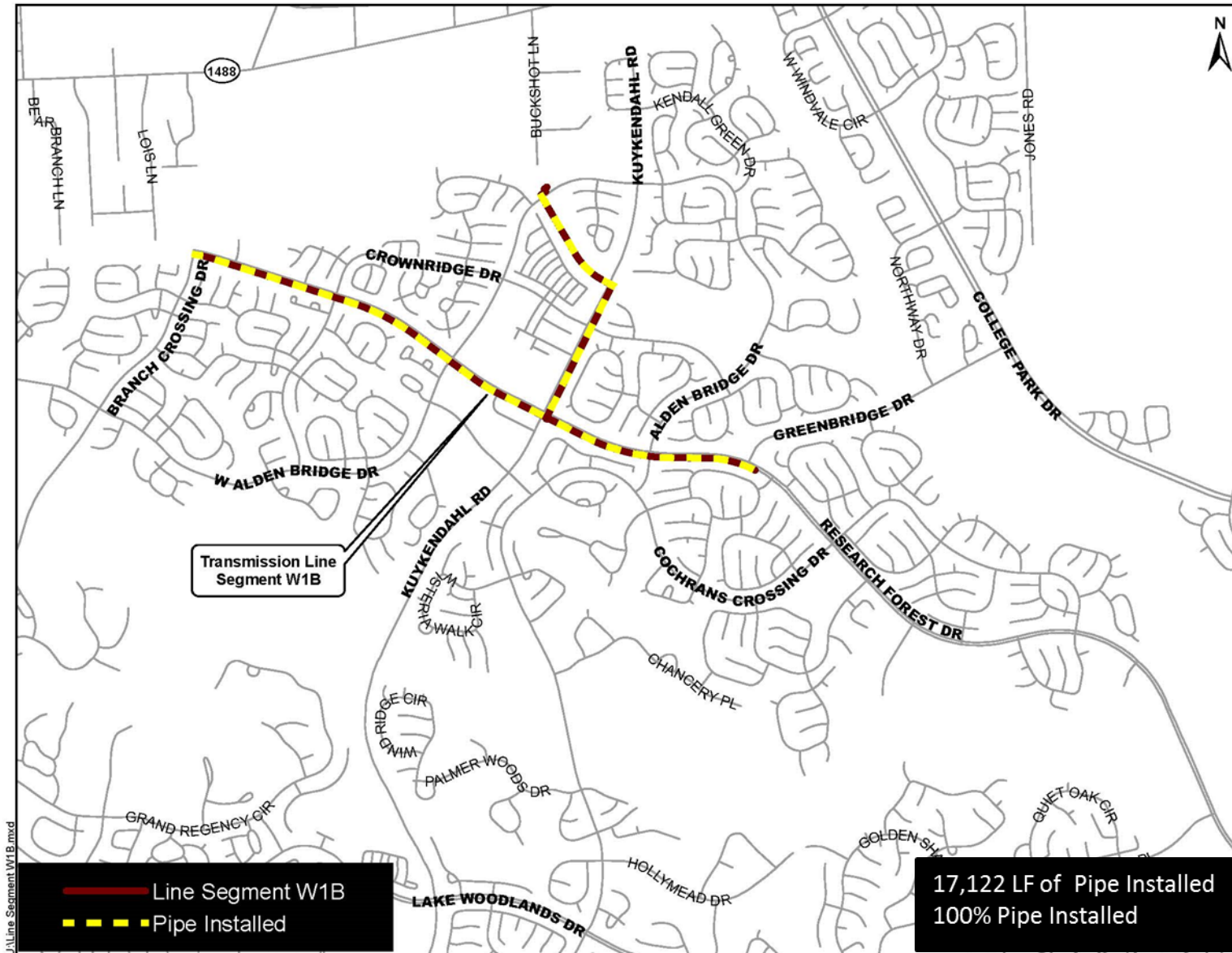


## EXHIBIT 11 (con't) Transmission Line System Construction Photos

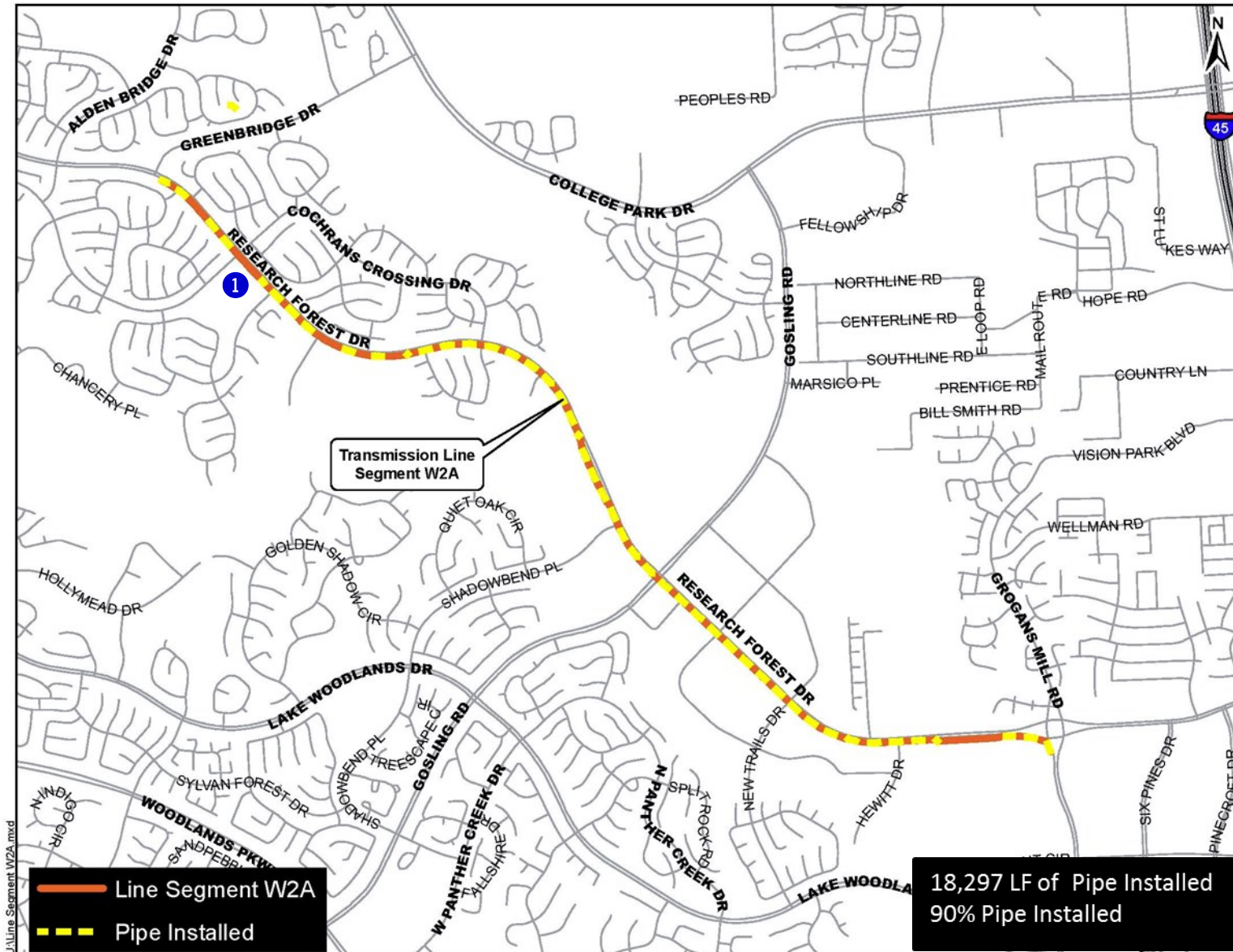


① *Segment W1A—Traffic restoration along Research Forest Drive at FM 2978*

# EXHIBIT 11 (con't) Transmission Line System Construction Photos



# EXHIBIT 11 (con't) Transmission Line System Construction Photos

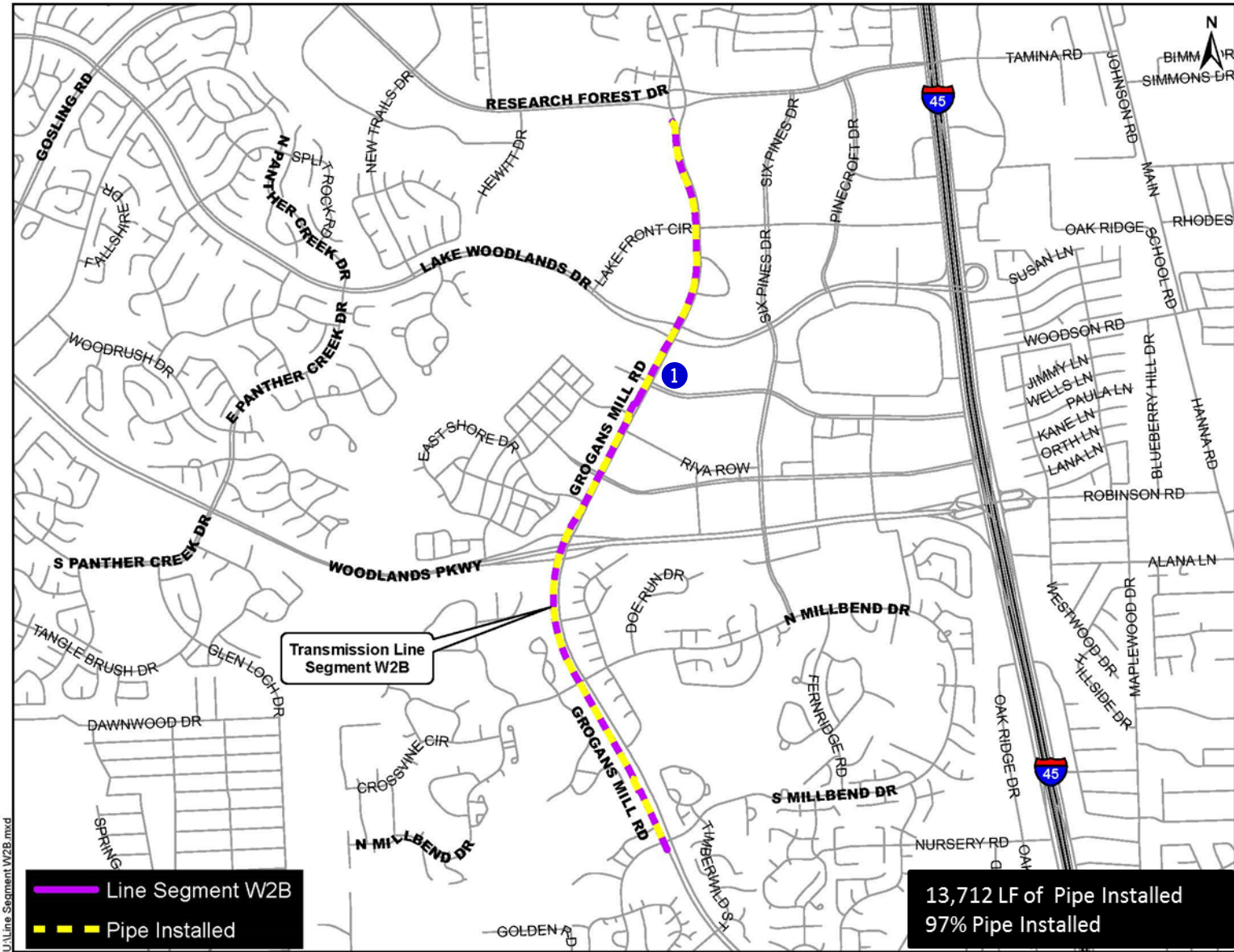


# EXHIBIT 11 (con't) Transmission Line System Construction Photos



❶ Segment W2A— Expansion joint installation at Big Barn fault crossing

# EXHIBIT 11 (con't) Transmission Line System Construction Photos



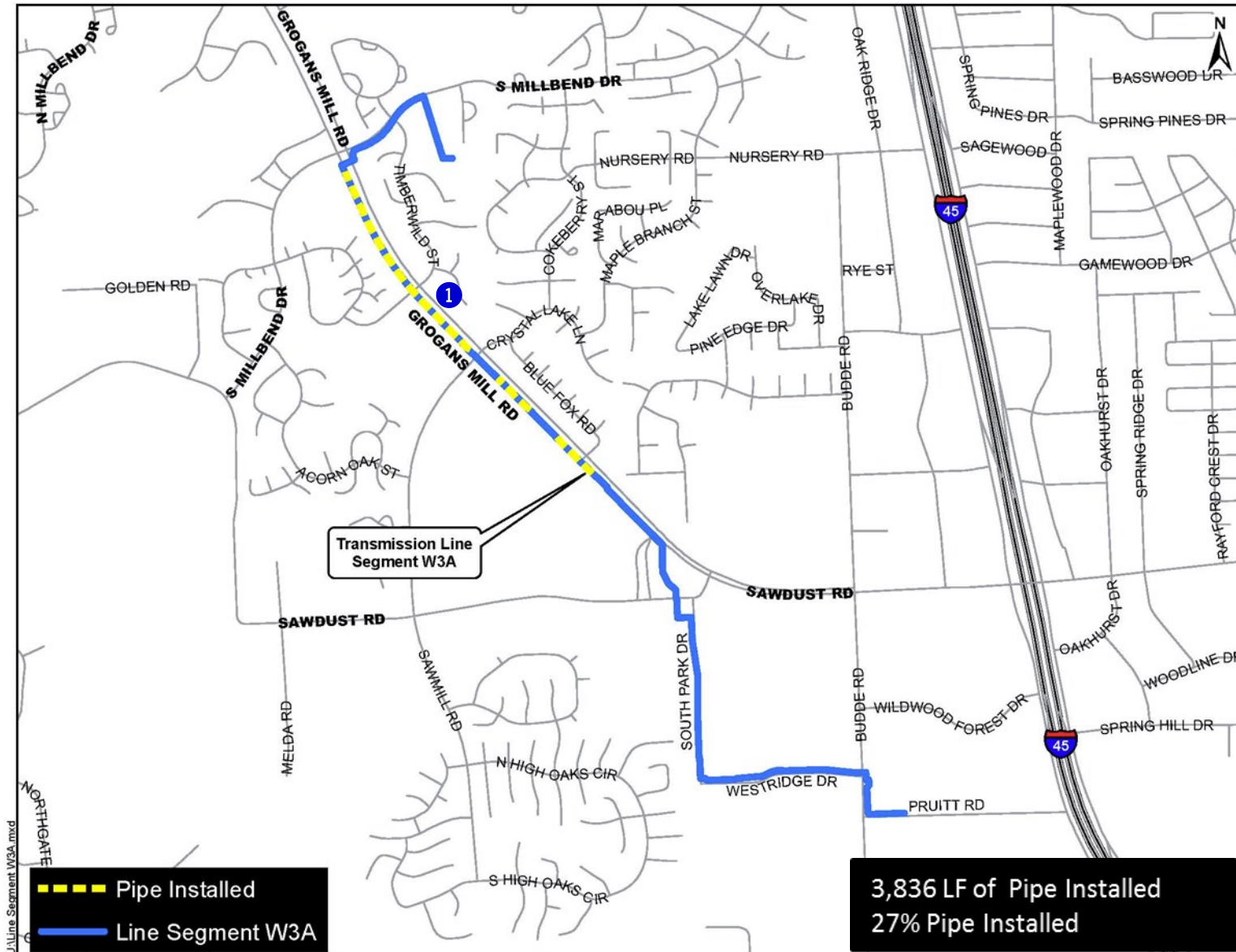


## EXHIBIT 11 (con't) Transmission Line System Construction Photos



❶ *Segment W2B - Bore pit and tunneling bore machine installation for Woodlands Waterway crossing*

# EXHIBIT 11 (con't) Transmission Line System Construction Photos

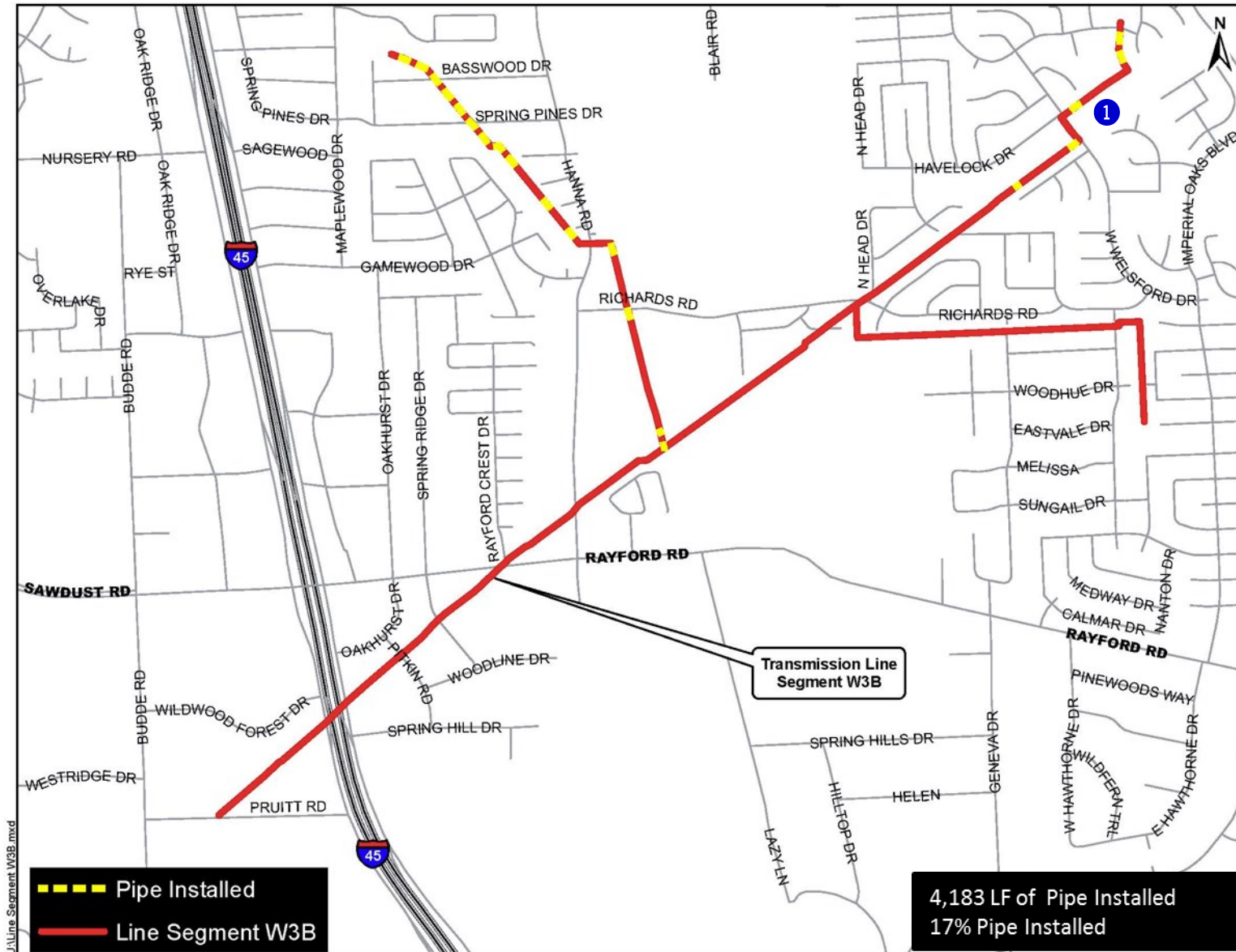


## EXHIBIT 11 (con't) Transmission Line System Construction Photos



① *Segment W3A - 20-inch pipe installation along Grogans Mill Road*

# EXHIBIT 11 (con't) Transmission Line System Construction Photos

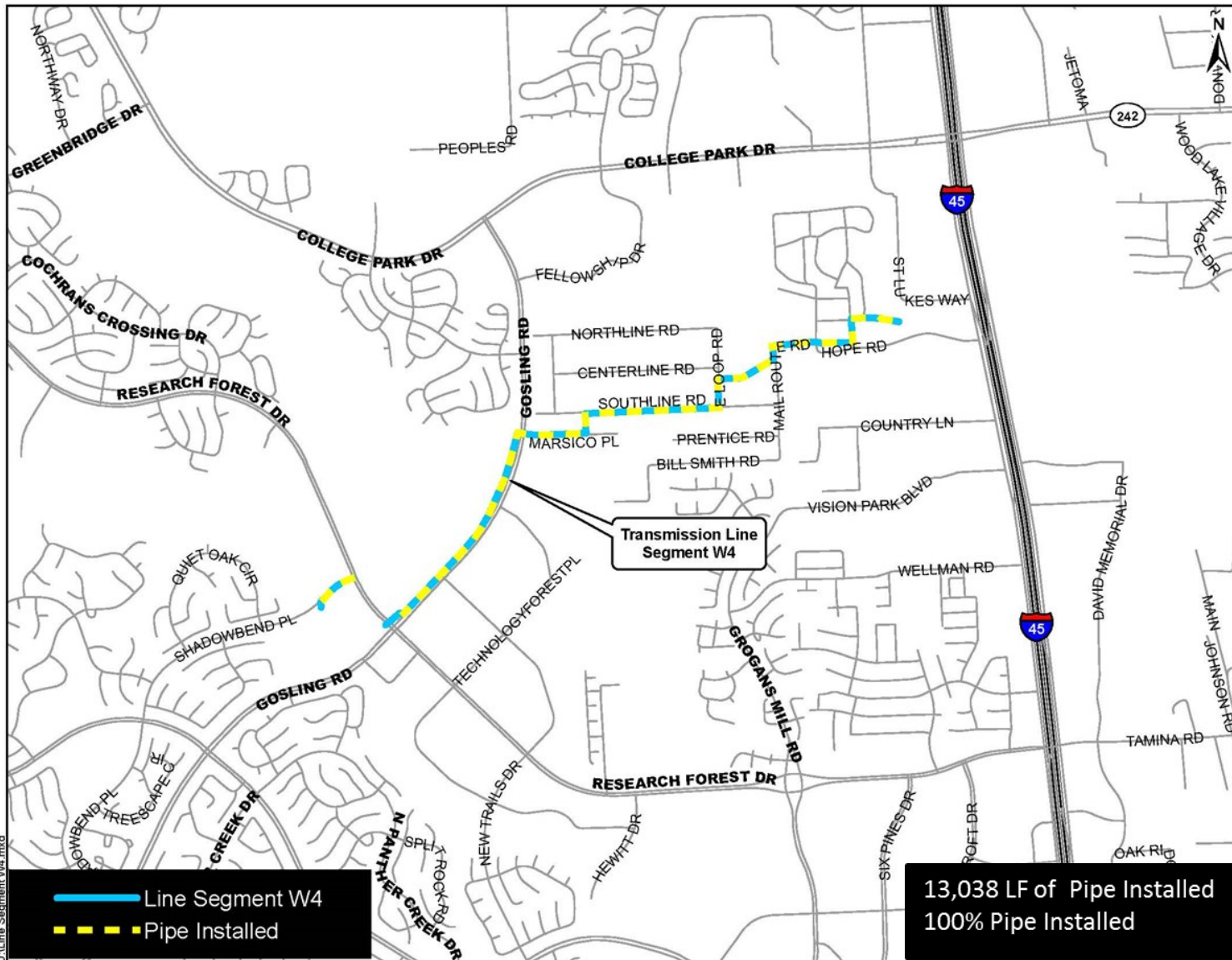


## EXHIBIT 11 (con't) Transmission Line System Construction Photos

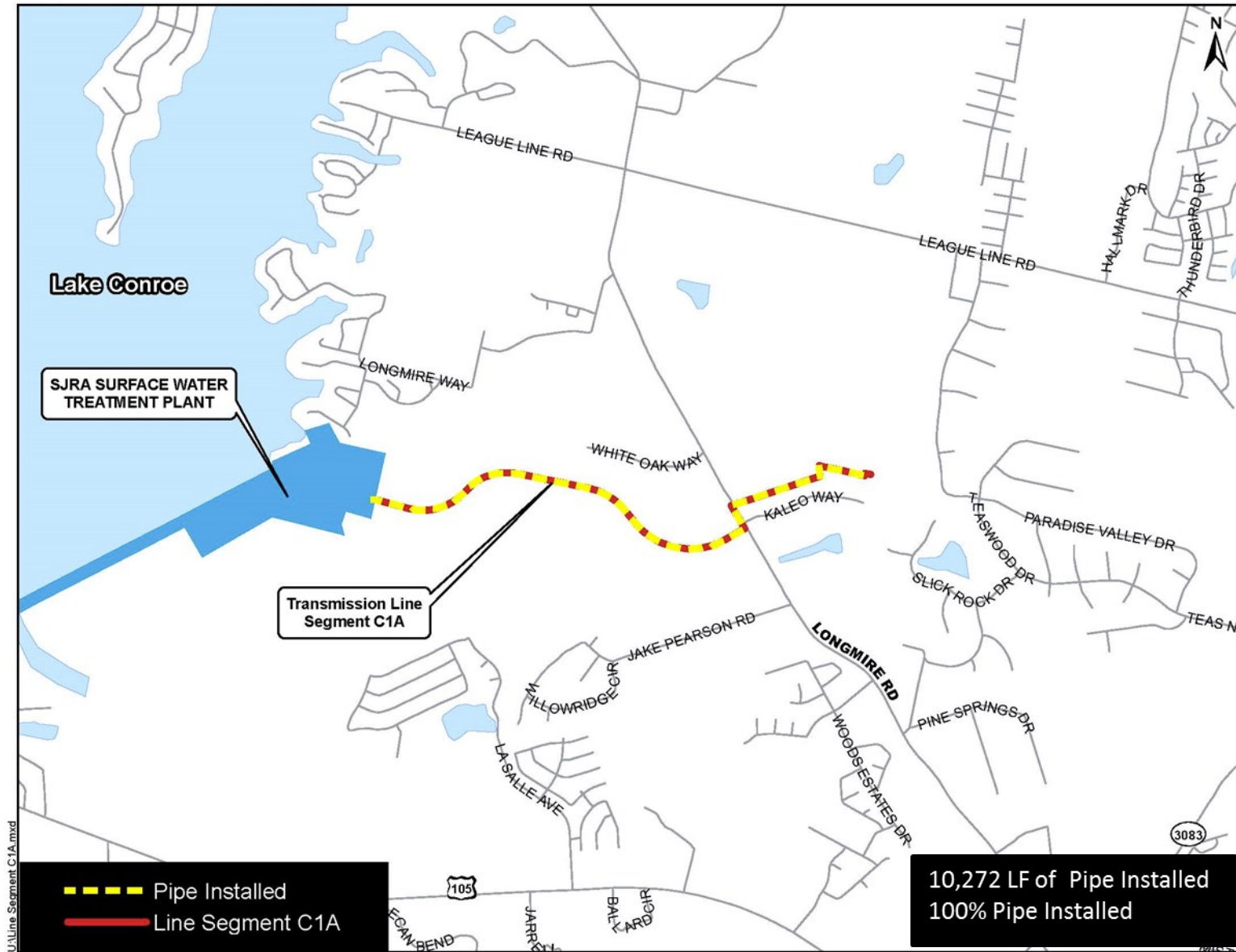


① Segment W3B - 12-inch waterline installation along Montgomery County Drainage District No. 6

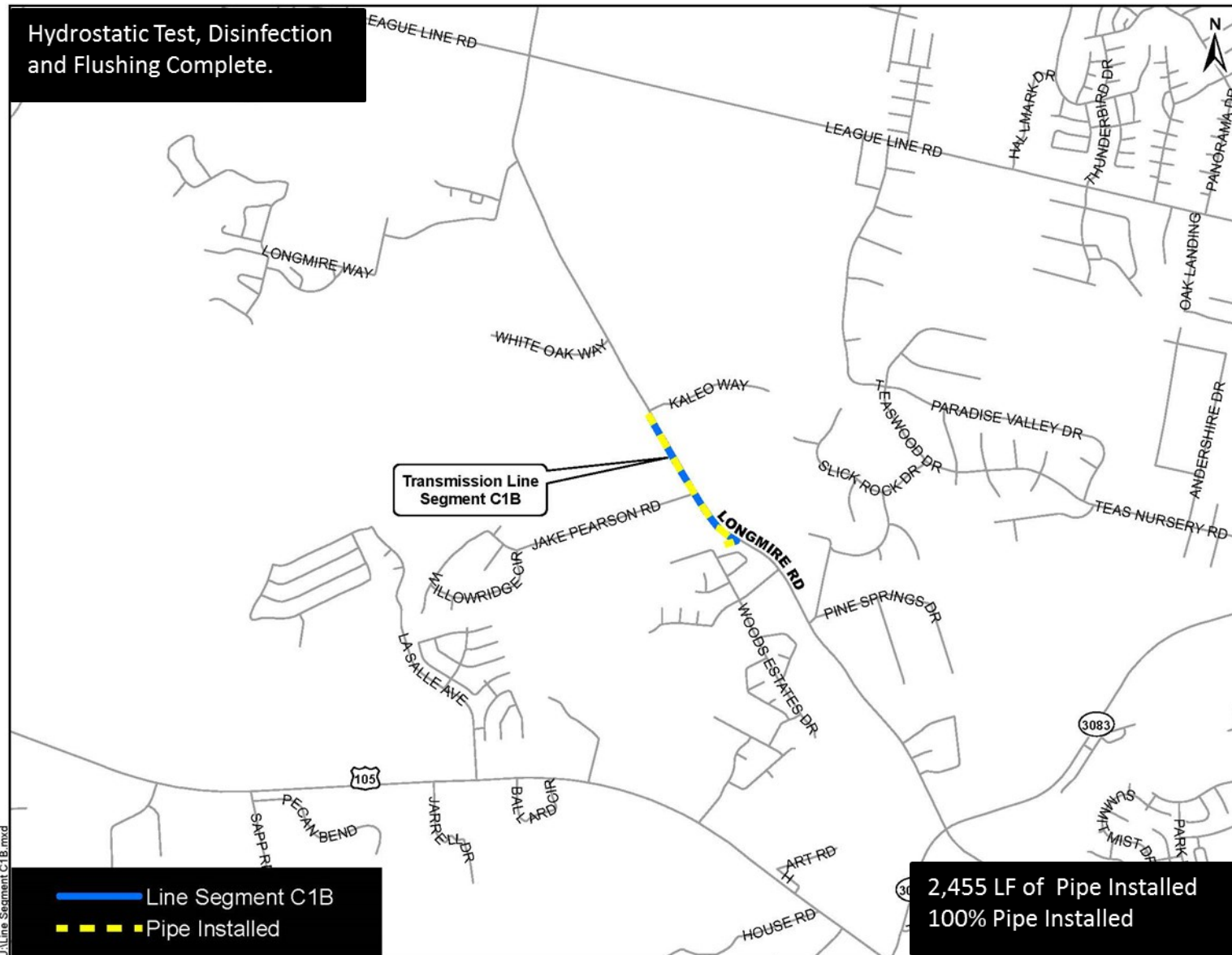
# EXHIBIT 11 (con't) Transmission Line System Construction Photos



# EXHIBIT 11 (con't) Transmission Line System Construction Photos

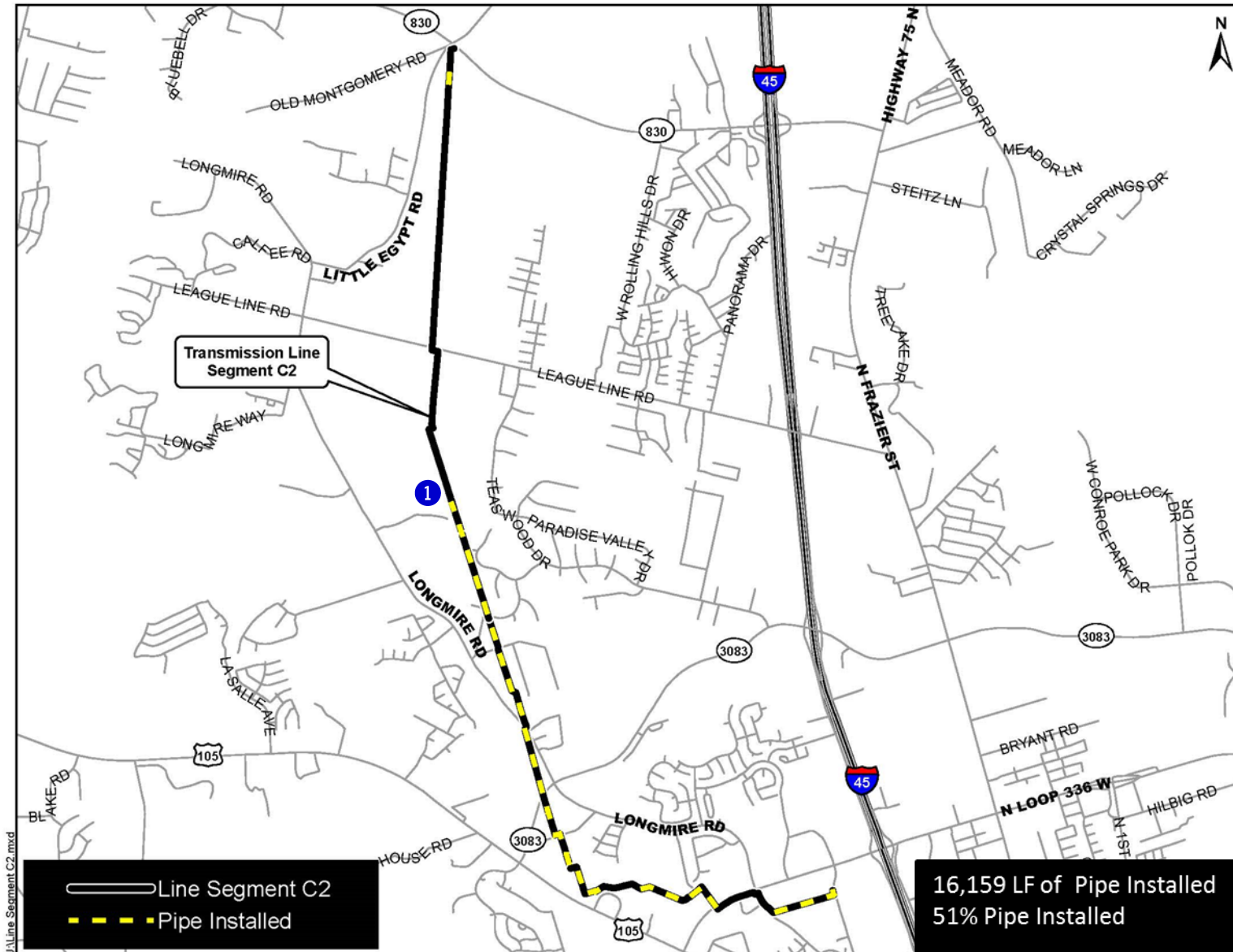


# EXHIBIT 11 (con't) Transmission Line System Construction Photos





# EXHIBIT 11 (con't) Transmission Line System Construction Photos

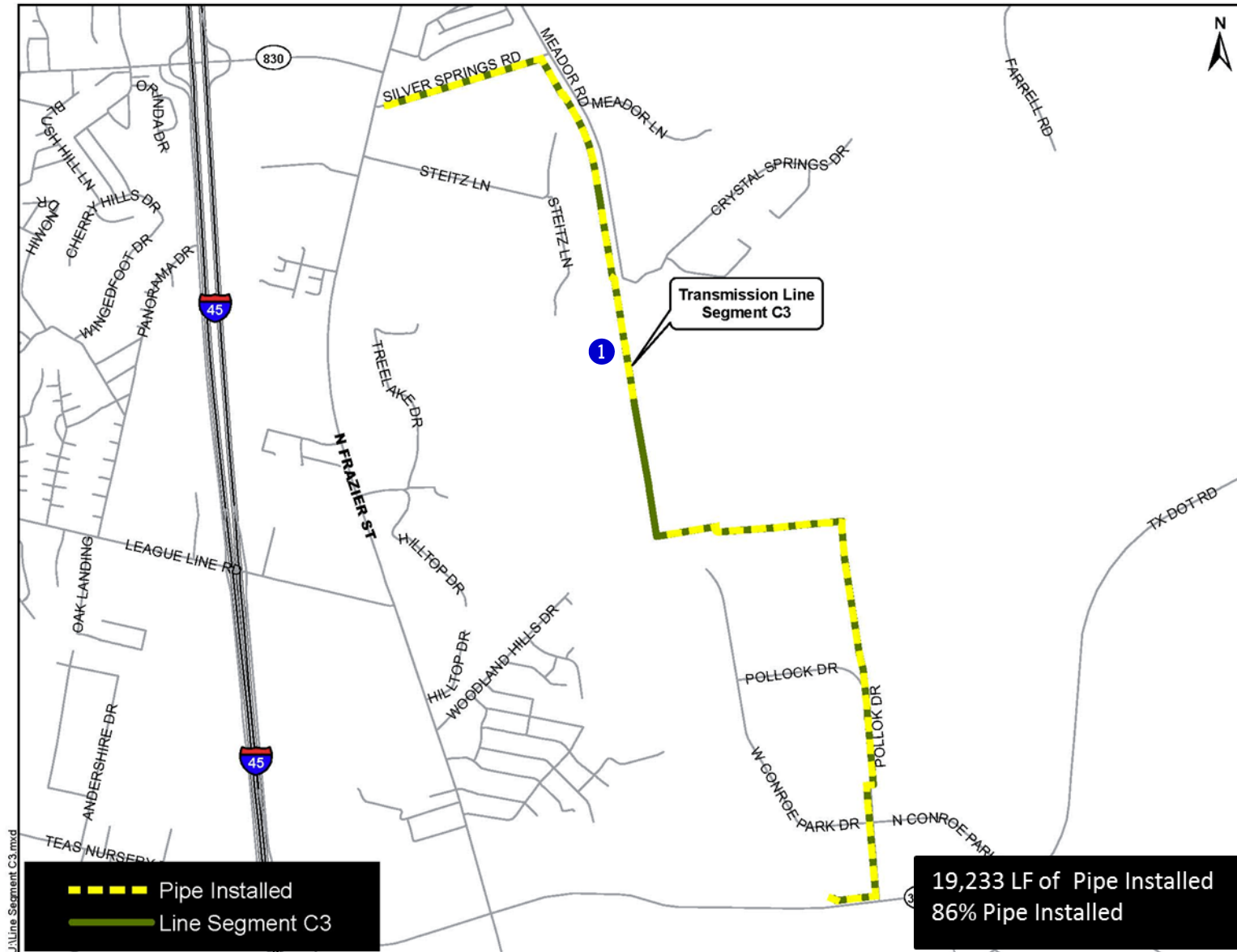


## EXHIBIT 11 (con't) Transmission Line System Construction Photos



❶ Segment C2— Tunnel bore pit installation along Entergy corridor

# EXHIBIT 11 (con't) Transmission Line System Construction Photos

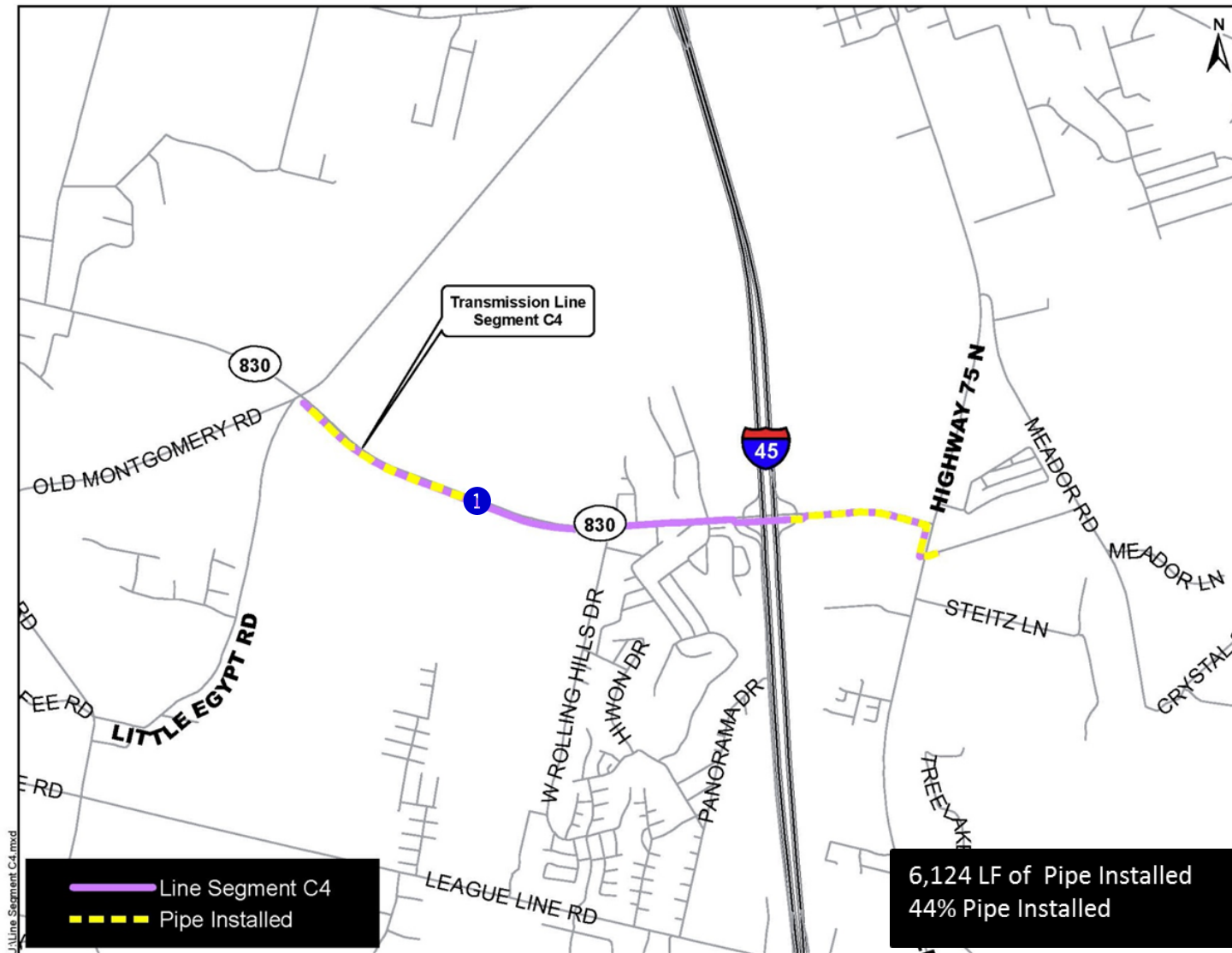


## EXHIBIT 11 (con't) Transmission Line System Construction Photos



① *Segment C3— Manhole installation preparation along Silver Springs Road*

# EXHIBIT 11 (con't) Transmission Line System Construction Photos



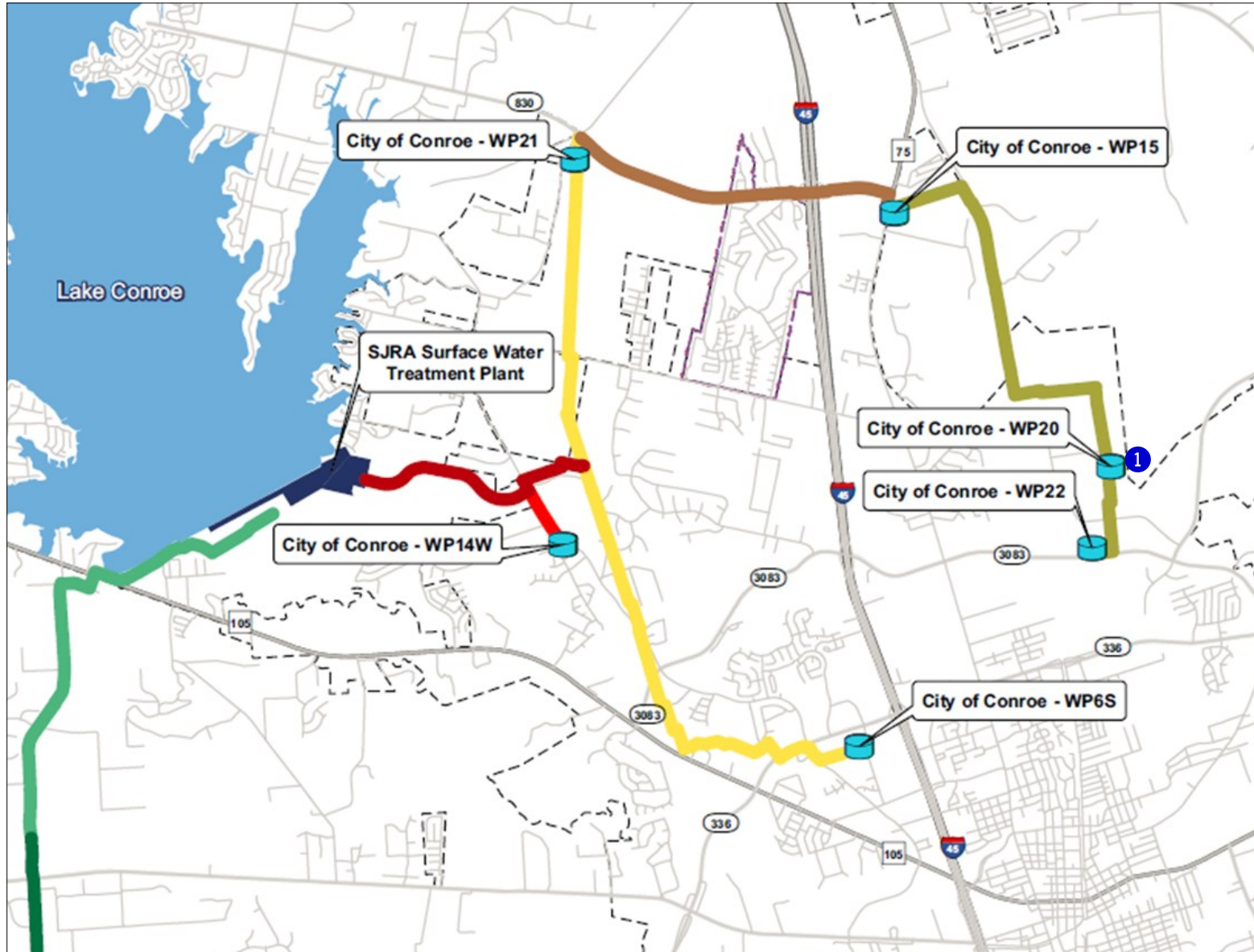
## EXHIBIT 11 (con't) Transmission Line System Construction Photos



① Segment C4—20-inch waterline installation along FM 830

# EXHIBIT 11 (con't) Transmission Line System Construction Photos

## WATER RECEIVING FACILITIES—NORTH



## EXHIBIT 11 (con't) Transmission Line System Construction Photos

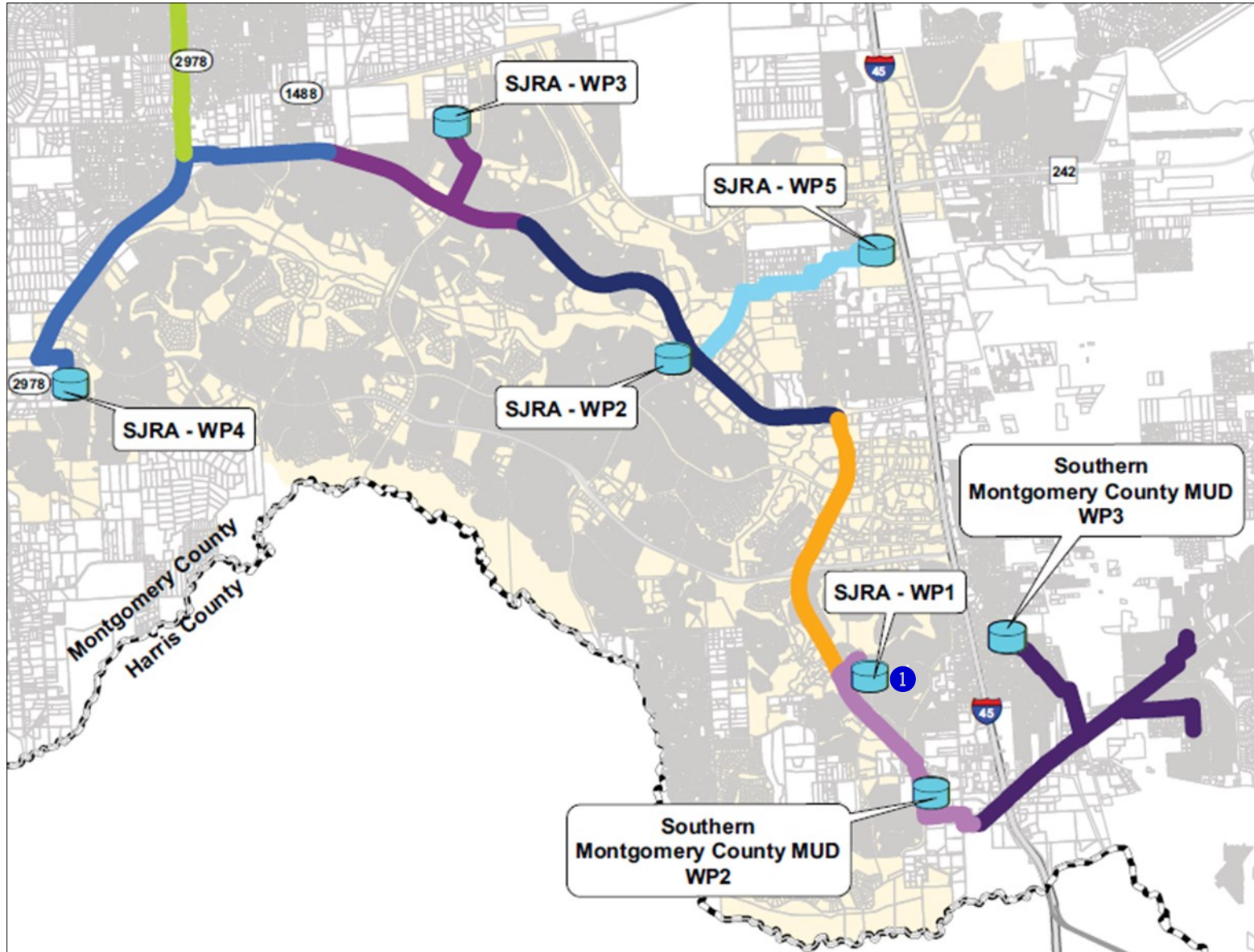


❶ *Surface Water Receiving Facility – North— Flow Control Pressure Station assembly at Conroe Water Plant No. 20*



# EXHIBIT 11 (con't) Transmission Line System Construction Photos

## WATER RECEIVING FACILITIES—SOUTH



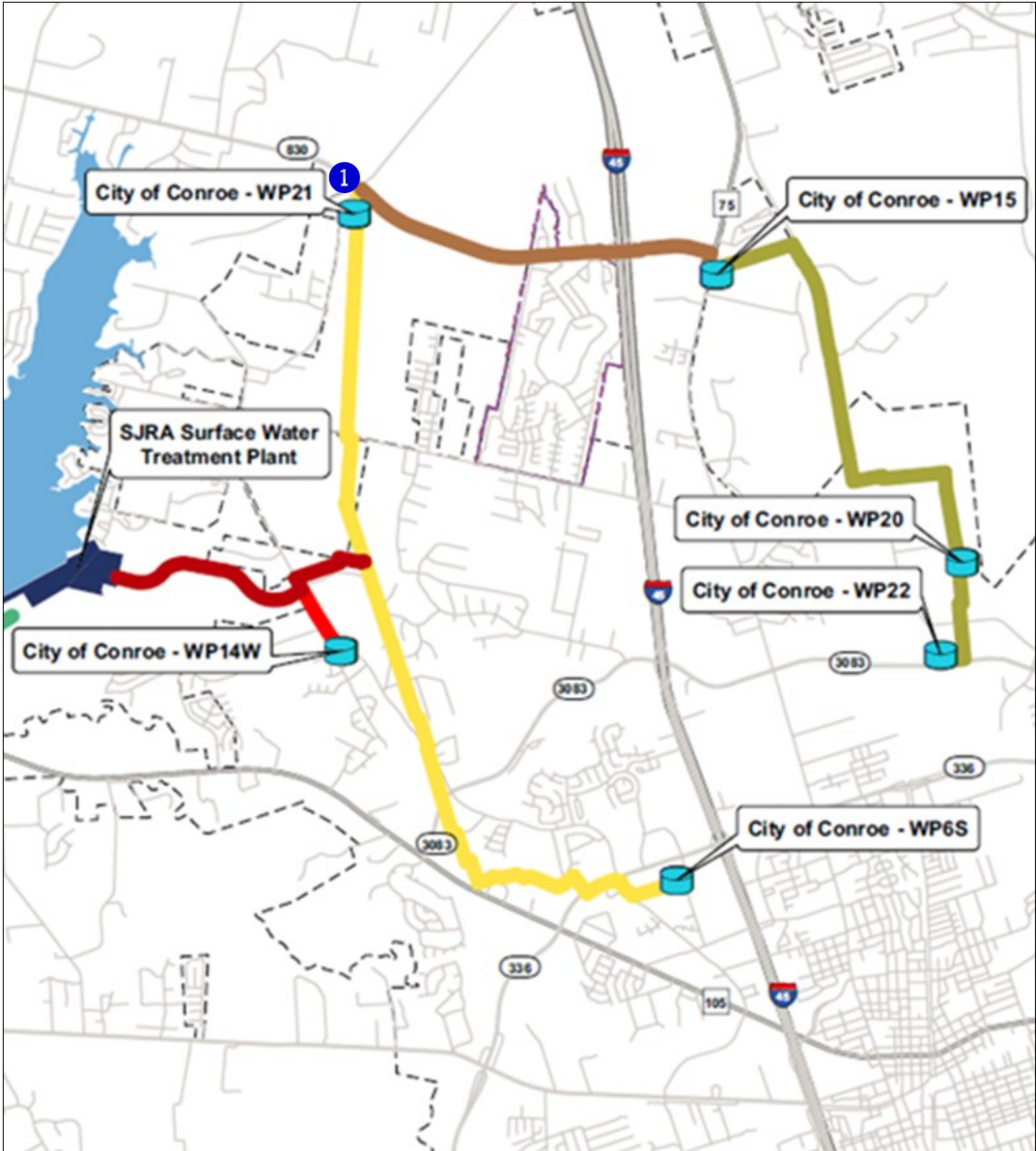
## EXHIBIT 11 (con't) Surface Transmission System Line Construction Photos



① *Surface Water Receiving Facility – South — Riser pipe installation at Woodlands Water Plant No. 1*

# EXHIBIT 12 Surface Water Standpipe Construction Photos

Surface Water Standpipe



## EXHIBIT 12 (con't) Surface Water Standpipe Construction Photos



❶ *Surface Water Standpipe—Standpipe tank panel installation at Conroe Water Plant No. 21*

# Fiber Optic Network Communication System Photos



## EXHIBIT 13 Fiber Optic Network Communication System



*Fiber optic cable stored materials*

# 7.0 GRP PROGRAM EXTENSIONS

## 7.1 ENGINEERING

Design efforts are underway for the GRP Program Extension projects. Below is a summary of the extension projects through the month of July.

**Transmission Segment W3C** - Segment W3C includes approximately 6,900 linear feet of 12-inch pipe to be constructed east of and connecting to Segment W3B along the Kinder Morgan (Tennessee Gas) pipeline corridor east of I-45, to northward along Aldine Westfield Road to the Montgomery County MUD 99 Water Plant No. 1. It is currently in the preliminary design phase with the 30% drawings due in October for review.

