



GROUNDWATER REDUCTION PLAN PROGRAM

MONTHLY PROGRESS REPORT - APRIL 2014



TABLE OF CONTENTS

Table of Contents	1	3.3 Process and Procedures	11
Acronyms and Definitions	2	3.4 Look Ahead	11
1.0 Planning	3	4.0 Cost Report and Financial Considerations	12
1.1 Strategic	3	4.1 GRP Program and GRP Project CIP Budget(s)	12
1.2 Engineering and Construction	3	4.2 Financial Reports	12
1.3 Meetings	3	4.3 Invoices/Applications for Payment	12
2.0 Project Activities	4	4.4 Contract Amendments and Change Orders	13
2.1 Engineering	4	4.5 Claims	13
2.2 State Agency Coordination	4	4.6 CIP Cash Flow	13
2.3 Surface Water Transmission System Project Data	5	4.7 CIP Budget Estimates at Completion	13
2.4 Surface Water Transmission System Construction Progress	8	4.7.1 GRP Program	13
2.5 Surface Water Facility Construction Progress and Project Data	10	4.7.2 GRP Projects	13
3.0 Procurement	11	4.8 Land Acquisition	13
3.1 Solicitations	11	5.0 Quality Assurance	14
3.2 Contract/Agreement/Work Order Approvals	11	5.1 Final Design	14
		5.2 Pre-Construction	14
		5.3 Construction	14
		6.0 Exhibits	15



ACRONYMS AND DEFINITIONS

ACRONYMS

CA&I	Construction Administration and Inspection
CCT	Construction Communication Team
CIP	Capital Improvement Project
CM&I	Construction Management and Inspection
CMAR	Construction Manager At Risk
CMT	Construction Materials Testing
CSB / P	Competitive Sealed Bid / Proposal
EA	Environmental Assessment
EAC	Estimate At Completion
FONCS	Fiber Optics Network Communication System
GIS	Geographic Information System
GRP	Groundwater Reduction Plan
GST	Groundwater Storage Tank
HSPS	High Speed Pump Station
LSGCD	Lone Star Groundwater Conservation District
LVGU	Large Volume Groundwater User
NTP	Notice To Proceed
PER	Preliminary Engineering Report
PMP	Program Management Plan
PVC	Polyvinyl Chloride
PSA	Professional Services Agreement
QA	Quality Assurance
RCCP	Reinforced Concrete Cylinder Pipe
RFB / Q / P	Request For Bids / Qualifications / Proposals
RWI / RWPS	Raw Water Intake / Raw Water Pump Station
SJRA	San Jacinto River Authority
SOQ	Statement of Qualifications
SWF	Surface Water Facilities (SWTP, HSPH and RWI)
SWRF	Surface Water Receiving Facilities
SWTP	Surface Water Treatment Plant
TCEQ	Texas Commission on Environmental Quality

DEFINITIONS

TWDB	Texas Water Development Board
TXDOT	Texas Department of Transportation
WIF	Water Infrastructure Fund
GROUNDWATER REDUCTION PLAN (GRP)	The document developed and filed with the LSGCD indicating SJRA's plan to reduce the permitted 2009 groundwater pumpage of its GRP Participants by 30%. The GRP is administered by the SJRA, including any supplements, revisions, or amendments.
GRP PROGRAM TEAM	SJRA staff, Program Management Consultant (Brown & Gay Engineers, Inc.) staff, and technical consultants working interdependently toward meeting the goals of the Groundwater Reduction Plan.
GRP ADMINISTRATOR	The SJRA General Manager's designee who administers the SJRA Groundwater Reduction Plan and GRP Contract with GRP Participants.
GRP CONTRACT	Contract between the SJRA and a Participant to be included in the SJRA's efforts to meet the surface water conversion requirements mandated by the LSGCD.
JOINT GRP	GRP which is prepared to include (takes into account) LVGUs who have executed a GRP Contract with the SJRA to join the SJRA's GRP. Contracted LVGUs obtain LSGCD groundwater reduction regulation compliance through the SJRA's Joint GRP without preparing and submitting a GRP.
LARGE VOLUME GROUNDWATER USER(s) (LVGU)	Any person or entity that, through a single well or a combination of wells, actually produces or is authorized by permit(s) issued by the LSGCD to produce 10 million gallons or more of groundwater annually on or after January 1, 2008.
PARTICIPANT(S)	Regulated User(s) that enters into and remains subject to a written agreement with the SJRA to be included in the SJRA's GRP and includes the legal successors or assigns of Participant(s).
REGULATED USER(S)	Any public or private entity or person that is or becomes subject to the District Regulatory Plan established by the LSGCD and includes any amendments, revisions or supplements thereto as may be adopted by the LSGCD.
SJRA GRP DIVISION	Division of the SJRA responsible for GRP compliance, and the management, administration, operation and maintenance of the surface water facilities and surface water transmission system.



1.0 PLANNING

The GRP Program Team meets regularly for the purposes of setting performance expectations and goals of the GRP Program, identifying the efforts required to achieve these objectives, evaluating the effectiveness of such efforts, and modifying those efforts based upon both internal and external performance evaluations.

1.1 STRATEGIC

This month a great deal of time centered around the analysis and presentation of the San Jacinto River Authority—GRP Division Water Rates and Financial Planning Model. GRP Participant contracts require that a review of rates be conducted annually and that a rate study, completed by an external consultant, be conducted at least every five years. SJRA staff and HDR Engineering, Inc., worked diligently to thoroughly compile information and prepared the ten-year period study as well as a financial planning model that will be the basis for proposing water rates for Fiscal Year 2015 through Fiscal Year 2024. In addition, the report recommended establishing reserve funds for the GRP Division to provide a good foundation for the startup and operation of the overall program. The reserve funds and financial model puts the GRP Participants in a very strong position to manage risks, monitor performance, control costs, and anticipate future rates. Both the proposed GRP Participant Rate Order and the GRP Division Reserve Fund resolution, along with the GRP Division Water Rates and Financial Planning Model were presented to the GRP Review Committee and the SJRA Board of Directors for evaluation and commentary this month.

1.2 ENGINEERING AND CONSTRUCTION

All procurement services for construction proposals, with the exception of the permanent access road, have been completed and fifteen transmission line construction contracts have been awarded. The engineering consultants will continue to provide construction phase services by reviewing submittals and requests for information as work proceeds.

1.3 MEETINGS

Various meetings continued this month with the GRP Program Team. A listing of these meetings is attached as [Exhibit 9](#).



Three 12,000 gallon diesel fuel reservoirs at Surface Water Facility

2.0 PROJECT ACTIVITIES

Currently, the GRP Program remains on schedule for the delivery of treated surface water to select Joint GRP Participants on or before January 1, 2016. A simplified GRP Program schedule can be found in attached **Exhibit 1**.

2.1 ENGINEERING

SURFACE WATER TRANSMISSION SYSTEM

Segments T1, T2, T3, W1A, W1B, W2A, W2B, W3A, W3B, W4, C1A, C1B, C2, C3, C4, Surface Water Receiving Facilities—North, Surface Water Receiving Facilities—South, Standpipe, and Fiber Optic Communications System – Design is complete. Engineering consultant is providing construction phase services.

Construction Management and Inspection (CM&I) – The CM&I consultant provided management and inspection services for Transmission Segments T1, T2, T3, W1A, W1B, W2A, W2B, W3A, W3B, W4, C1A, C1B, C2, C3, C4, WRF-N, WRF-S, and the Standpipe.

Construction Materials Testing Consultant (CMT) - CMT consultant is currently working with CM&I staff to perform industry standard construction materials testing. Testing includes subgrade and backfill soil densities and concrete pavement properties and compressive strengths.

SURFACE WATER FACILITIES

Raw Water Intake Pump Station – Design is complete. Engineering consultant is providing construction phase services.

Surface Water Treatment Plant – Design is complete. Engineering consultant is providing construction phase services.

High Service Pump Station and Ground Storage Tanks – Design is complete. Engineering consultant is providing construction phase services.

Construction Administration and Inspection (CA&I) – The CA&I consultant for the SWF is currently working with the CMAR and SJRA staff to review submittals and RFI's, and provide constant field monitoring and inspection of the systems being installed.

Construction Materials Testing Consultant (CMT) - The CMT consultant for the SWF is currently working with the CMAR and CA&I staff to perform in-

dustry standard construction materials testing. Testing includes soil densities, compressive strength/properties of concrete placed; and welding, coatings and masonry testing.

Cathodic Protection - The cathodic protection consultant has completed their design effort for both the transmission line segments and the Surface Water Facilities and is providing construction phase services.

2.2 STATE AGENCY COORDINATION

This month, SJRA coordinated with the Texas Water Development Board with regard to the review and approval process of Change Orders for Transmission System Line Segments T2 and T3, and the Water Receiving Facilities North and South projects.

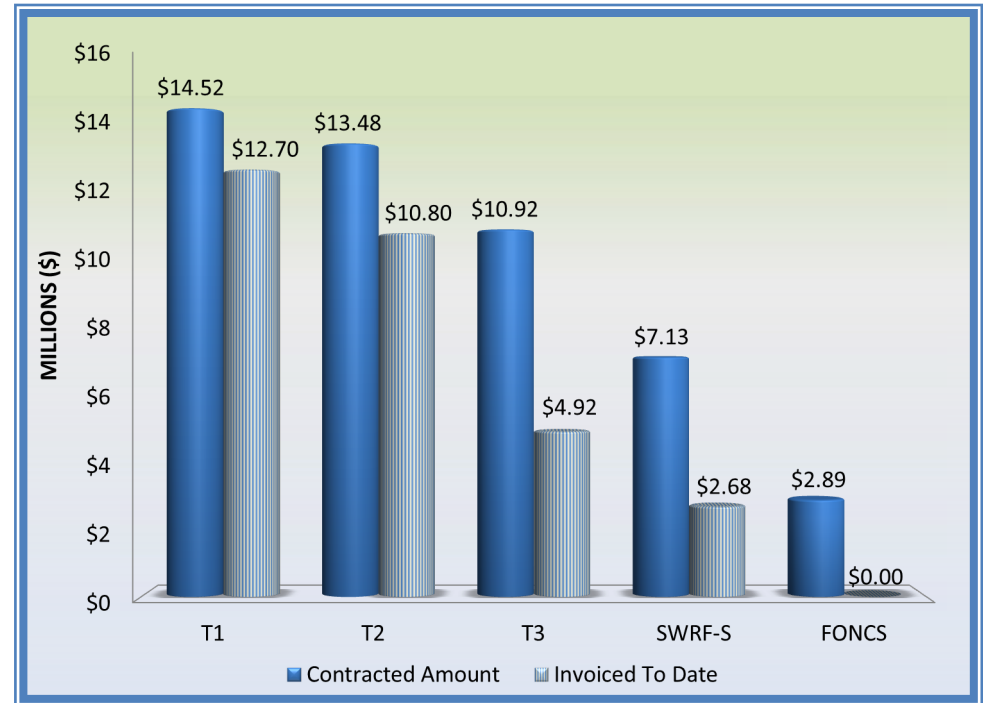


View from GAC Building at Surface Water Facility

2.0 PROJECT ACTIVITIES (CONTINUED)

2.3 SURFACE WATER TRANSMISSION SYSTEM PROJECT DATA

The month of April concluded with the installation of approximately 154,617 feet or 29.3 miles of various sized concrete coated steel pipe and PVC pipe along the majority of the transmission line segments. This represents approximately 56% of the total planned pipe to be installed throughout Montgomery County by or before January 1, 2016. The following graphs and charts show the progress of Transmission Line Segments T1, T2, T3, W1A, W1B, W2A, W2B, W3A, W3B, W4, C1A, C1B, C2, C3, C4, Surface Water Transmission North Water Receiving Facilities (SWRF-N), Surface Water Transmission South Water Receiving Facilities (SWRF-S), Standpipe and Fiber Optics Network Communication System (FONCS) thus far.



Surface Water Transmission System Total Progress To Date	
Total Contracted Amount	\$148,665,448.22
Total Invoiced To Date	\$78,231,195.02
Total % Complete Based on Invoice Amount	53%

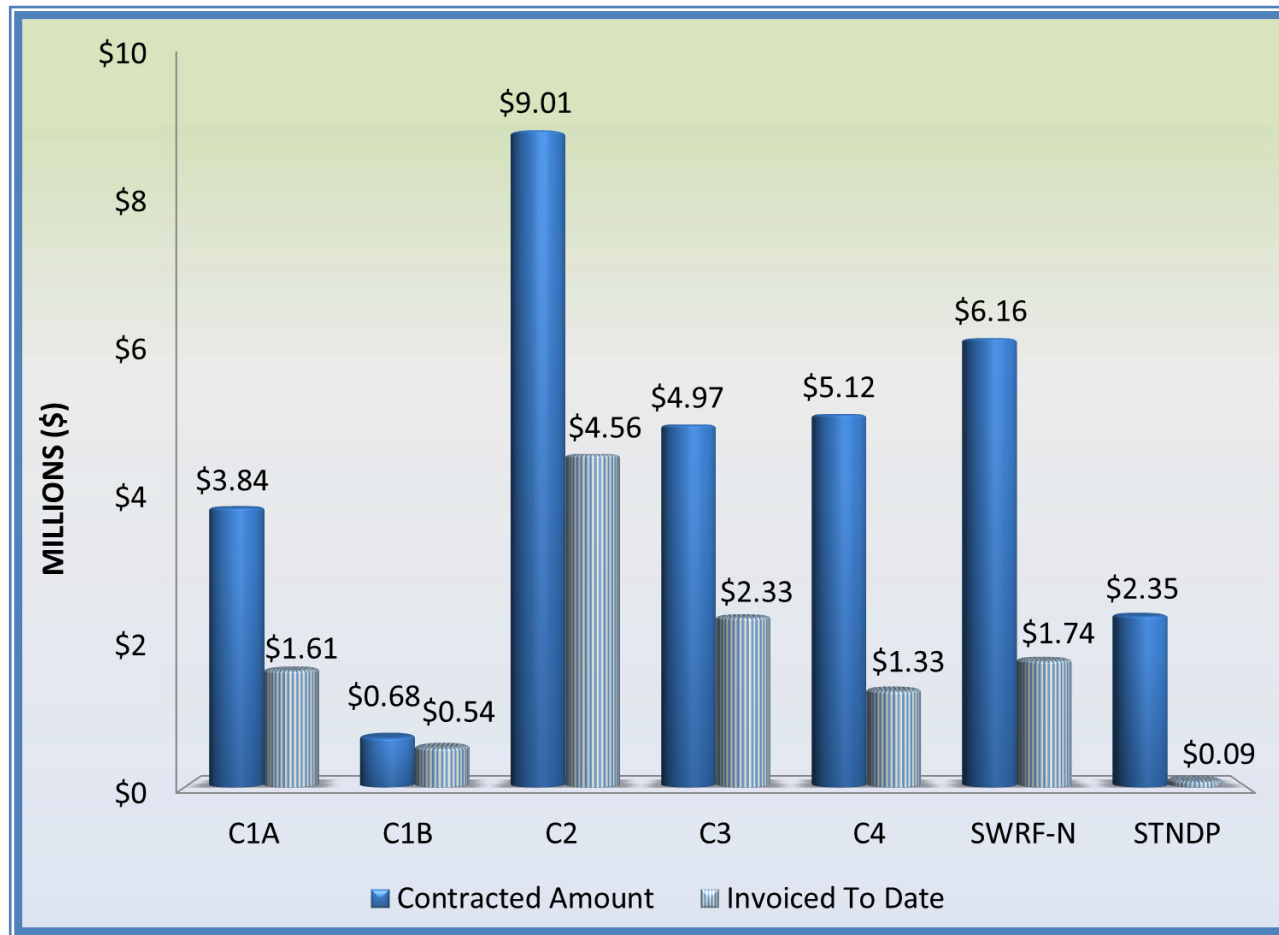
Segment	T1	T2	T3	SWRF-S	FONCS
Contracted Amount	\$14,521,937.14	\$13,475,718.33	\$10,918,193.97	\$7,127,383.00	\$2,885,432.35
Invoiced To Date	\$12,698,641.65	\$10,803,155.80	\$4,917,031.53	\$2,683,528.43	\$0.00
% Complete	87%	80%	45%	38%	0%

2.0 PROJECT ACTIVITIES (CONTINUED)



Segment	W1A	W1B	W2A	W2B	W3A	W3B	W4
Contracted Amount	\$8,222,000.50	\$7,213,544.50	\$16,340,258.02	\$16,161,600.00	\$7,880,207.50	\$8,124,485.50	\$3,656,604.23
Invoiced To Date	\$5,805,690.05	\$6,139,792.89	\$8,371,880.66	\$10,677,412.54	\$27,100.00	\$1,144,956.76	\$2,759,632.39
% Complete	71%	85%	51%	66%	1%	14%	76%

2.0 PROJECT ACTIVITIES (CONTINUED)



Segment	C1A	C1B	C2	C3	C4	SWRF-N	STANDPIPE
Contracted Amount	\$3,837,683.40	\$683,491.53	\$9,014,837.00	\$4,972,314.80	\$5,115,396.90	\$6,160,184.55	\$2,354,175.00
Invoiced To Date	\$1,606,880.71	\$543,443.60	\$4,562,328.93	\$2,333,426.22	\$1,327,283.39	\$1,741,546.37	\$87,463.10
% Complete	42%	80%	51%	47%	26%	28%	4%

2.0 PROJECT ACTIVITIES (CONTINUED)

2.4 SURFACE WATER TRANSMISSION SYSTEM CONSTRUCTION PROGRESS

Significant progress continues to be made each month with regard to pipe installation on each of the fifteen Surface Water Transmission Line Segments. The chart below represents the overall pipe installation statistics through the month of April.

Transmission Line System Pipe Installation Statistics to Date	
Total Piping Installed to Date	29.3 miles
Total % of Pipe Installed to Date	57%

Segment T1 - Contractor continued open-cut installation of 60-inch concrete coated steel pipe and installation of fiber optic conduit and asphalt replacement along McCaleb Road. The Magellan Pipeline crossing has been completed. Approximately 20,345 feet or 99% of 60-inch concrete coated steel pipe has been installed through this month. (See Exhibit 11, Page 53)

Segment T2 - Contractor continued open-cut installation of 54-inch concrete coated steel pipe, tunnel casing installation under FM 2854, fiber optic conduit installation, site restoration, and addressed two roadway entrances into school property along Fish Creek Thoroughfare. Approximately 21,231 feet or 90% of concrete coated steel pipe has been installed through this month. (See Exhibit 11, Page 55)

Segment T3 - CenterPoint Energy is in the process of relocating utilities along Sendera Ranch Drive. No additional pipe was installed this month, therefore approximate installation of 54-inch concrete coated steel pipe along Fish Creek Thoroughfare remains at 9,607 feet or 52% installation complete. (See Exhibit 11, Page 57)

Segment W1A - Contractor continued tunneling and open-cut installation of 48-inch concrete coated steel pipe and fiber optic conduit along Research Forest Drive. Approximately 19,840 feet or 86% of 48-inch concrete coated

steel and 16-inch PVC pipe has been installed through this month. (See Exhibit 11, Page 59)

Segment W1B - Contractor continued open-cut installation of 42-inch concrete coated steel pipe, installation of fiber optic conduit, and asphalt shoulder installation along Research Forest Drive. Approximately 14,603 feet or 85% of 48-inch and 42-inch concrete coated steel pipe and 20-inch and 16-inch PVC pipe has been installed through this month. (See Exhibit 11, Page 61)

Segment W2A - Contractor continued open-cut installation of 42-inch concrete coated steel pipe and 30-inch PVC pipe along Research Forest Drive. 42-inch concrete coated steel pipe installation was completed at Bear Branch Crossing. Approximately 9,586 feet or 47% of 42-inch concrete coated steel pipe, and 30-inch and 20-inch PVC pipe has been installed through this month. (See Exhibit 11, Page 63)

Segment W2B - Contractor continued open-cut and trenchless installation of 30-inch PVC pipe, road pavement installation, and site restoration along Grogans Mill Road. Road pavement repairs along Grogan's Mill Road are approximately 85% complete. Approximately 12,546 feet or 89% of 30-inch PVC pipe has been installed through this month. (See Exhibit 11, Page 65)

Segment W3A - Contractor continued submittal process, surveying, and tree clearing work. Pipe installation is anticipated to begin in May.

Segment W3B - Contractor began trenchless installation of 16-inch PVC pipe along Magellan pipeline easement. Approximately 684 feet or 3% of 16-inch PVC pipe has been installed through this month. (See Exhibit 11, Page 67)

Segment W4 - Contractor continued 20-inch PVC pipe directional drilling operations and trenchless installation of 20-inch PVC pipe and fiber optic conduit. Approximately 12,474 feet or 95% of 20-inch PVC pipe has been installed through this month. (See Exhibit 11, Page 69)

2.0 PROJECT ACTIVITIES (CONTINUED)

Segment C1A - Contractor received all 42-inch concrete coated steel pipe along GRP Access Road and began open-cut installation of 42-inch pipe. Approximately 2,168 feet or 21% of 42-inch pipe has been installed through this month. (See Exhibit 11, Page 71)

Segment C1B - Contractor completed installation of waterline markers. 100% pipe installation totaling 2,452 feet of 16-inch PVC pipe was completed in February. (See Exhibit 11, Page 73)

Segment C2 - Contractor continued installation of 30-inch concrete coated steel pipe and fiber optic conduit along Entergy easement, completed tie in to Segment C1A, and began installation of 36-inch concrete coated steel pipe along Entergy easement near Conroe Water Plant No. 21. Approximately 16,261 feet or 47% of 30-inch concrete coated steel pipe, 16-inch and 12-inch PVC pipe installed through this month. (See Exhibit 11, Page 75)

Segment C3 - Contractor continued open-cut and trenchless installation of 20-inch PVC pipe and 16-inch PVC pipe and fiber optic conduit along Pollok Drive. Contractor continued tree clearing, surveying and installation of chain-link fence along Silver Springs Road and UPRR property adjacent to Girl Scouts property. Approximately 8,739 feet or 39% of 20-inch and 16-inch PVC pipe has been installed through this month; approximately 50% of chain-link fence has been erected. (See Exhibit 11, Page 77)

Segment C4 - Contractor continued installation of open cut installation of 24-inch PVC pipe along FM 830. Approximately 4,081 feet or 29% of 24-inch and 20-inch PVC pipe has been installed through this month. (See Exhibit 11, Page 79)

Fiber Optic Communications System - Contractor continued initial critical submittals, began ordering fiber optic cable and continued coordination efforts.

Standpipe - Construction contractor has continued initial critical submittals, began receiving construction materials and continued coordination efforts. (See Exhibit 12, Page 85)



Construction activities at Surface Water Facilities

2.0 PROJECT ACTIVITIES (CONTINUED)



Flag being flown to indicate divers working in the area. Divers installing intake screens in water at Raw Water Intake

SURFACE WATER RECEIVING FACILITIES

Surface Water Receiving Facilities–North - Contractor continued facility layout and began installation of Flow Control Pressure Station (FCPS) concrete pads for Conroe Water Plant Nos. 6, 14, and 15. Contractor began ground storage tank modifications and completed the chlorine building installation at Conroe Water Plant Nos. 20, 21, and 22. (See Exhibit 11, Page 81)

Surface Water Receiving Facilities—South - Contractor continued to install storm sewer pipe and inlets at SJRA Water Plant Nos. 2 and 5. Contractor continued to install underground mechanical, electrical and plumbing, fiber optic conduit and ground boxes, and cleaning ground storage tanks at SJRA Water Plant Nos. 3 and 5. Contractor continued ground storage tank modifications, cleaning and disinfection at SJRA Water Plant Nos. 2, 3, and 4. Chemical feed installation began at Southern Montgomery County MUD Nos. 2 and 3. (See Exhibit 11, Page 83)

2.5 SURFACE WATER FACILITY CONSTRUCTION PROGRESS AND PROJECT DATA

Raw Water Intake - Interior masonry work is complete. Installation of pump barrels and HVAC began this month. Electrical conduit and roof installation continued.

Surface Water Treatment Plant - Construction activities continue at the Operations, Chemical, Power Supply, Generator, Pretreatment, Membrane, Backwash Equalization, Process Water Recovery Basin, Belt Filter Press Building, Blower Building, and GAC facilities. Electrical power, data, and lighting conduit installation continues at the structures. Structural concrete placement, lightweight concrete roof topping placement, roofing, structure decking, masonry, and yard piping are the main activities still occurring on the site this month. Process piping installation and leak testing continues at the GAC. Mechanical, electrical, and plumbing continues in the Membrane Operations Building. Diesel backup generators, storage tanks, and main transformers were received.

High Service Pump Station - Installation continues for the discharge bay piping and grating. Also continuing is the installation of electrical conduit and cable support, HVAC, plumbing, electrical transformers, and motor control equipment.

Ground Storage Tanks - No major work occurred at the Ground Storage Tanks.

Site Work - Large diameter yard piping, potable water piping, sanitary sewer, storm sewer, manholes, junction boxes, and drain line installation continue to progress. Various piping is pressure and leak tested. Electrical duct bank installation and encasement continue.

The chart below represents Surface Water Facilities progress through the month of April.

Name of Project	Contracted Amount	Invoiced To Date	% Complete Based on Invoice Amount
Surface Water Facilities	\$190,704,740	\$108,984,444	57%

3.0 PROCUREMENT

3.1 SOLICITATIONS

No advertisements for solicitations occurred this month.

3.2 CONTRACT/AGREEMENT/WORK ORDER APPROVALS

- Work Order No. 10 for Final Design Services by Design Consultant for Preparation of Procurement Package for Transmission System Segment W3D

3.3 PROCESS AND PROCEDURES

The GRP Program continues to utilize traditional procurement methods for consultant services and alternative project delivery methods in the procurement of contractor services.

3.4 LOOK AHEAD

The following list provides a very general look ahead at known and anticipated GRP Program professional services and construction contractor solicitations, contract awards, agreements, and/or contract/work order amendments. Solicitations may be combined, modified, or canceled, or time frames may be modified as deemed necessary.

- Amendment No. 1 to Work Order No. 1 for HMI development and implementation for GRP
- Acquisition of Computer Maintenance Management System (CMMS)
- Work Order No. 9 for Population of CMMS and development of an Electronic Operations Manual for Raw Water Intake and Pump Station at the GRP Surface Water Facilities
- Work Order No. 18 for Population of CMMS and development of an Electronic Operations Manual for Water Treatment Plant at the GRP Surface Water Facilities
- Work Order No. 15 for Population of CMMS and development of an Electronic Operations Manual for High Service Pump Station and Ground Storage Facilities at the GRP Surface Water Facilities

- Professional Services Agreement and Work Order No. 1 for design of Instrumentation and Controls for GRP Transmission Segment W3C Receiving Facility
- Amendment No. 1 to Work Order No. 9 for Communication, Conduit and Groundboxes
- Professional Services Agreement and Work Order No. 1 for Fault Monitoring
- Supplemental Agreement to GRP Contract with City of Conroe
- Supplemental Agreement to GRP Contract with Southern Montgomery County MUD



Masonry work at Solids Dewatering Building at Surface Water Facility

4.0 COST REPORT AND FINANCIAL CONSIDERATIONS

4.1 GRP PROGRAM AND GRP PROJECT CIP BUDGET(S)

Through this month the GRP Program remains under its construction cost estimate of \$500,000,000, and forecasts continue to indicate it will be completed under budget (see also subsection 4.6 and **Exhibit 2**). A summary of the GRP Program's CIP budget and cost considerations as reported to the GRP Review Committee and the SJRA Board of Directors is provided as attached **Exhibit 2**.

A summary of the SJRA GRP Division's Fiscal Year 2014 operating budget (revenue and expenditures) for the month of April is provided as **Exhibit 8**. The budget includes all normal and customary expenses for operating a utility-based, non-profit business, including debt service, and is developed annually for approval by the SJRA Board of Directors.

The SJRA Board of Directors has authorized bond funding for the GRP Program in the amount of \$552,250,358.49 (Net \$479,743,492.79); see also **Exhibit 4**. This funding allows the SJRA to secure all of the resources required to perform professional services, construction services, and procure long lead time equipment during the design phase of the GRP Program.

4.2 FINANCIAL REPORTS

Exhibit 5 illustrates the funding sources presently applied towards the GRP Program CIP budget for the month of April, which include the following:

- 1.) Texas Water Development Board's (TWDB) Water Infrastructure Fund (WIF);
- 2.) The sale of open market Special Project Revenue Bonds, Series 2011;
- 3.) TWDB Dfund, Series 2011A;
- 4.) TWDB Dfund, Series 2012; and
- 5.) TWDB Dfund, Series 2012A
- 6.) TWDB Dfund, Series 2013
- 7.) Operating Cash

Available funding after costs represents approximately 97.8% of the planned Program budget. Contracted commitments are summarized below in Table 4.1 for the month of April. The GRP Program's funding and forecasted expenditures are further detailed in attached **Exhibits 2, 3 and 4**.

Please note that financial reports do not include investment income.

4.3 INVOICES/APPLICATIONS FOR PAYMENT

The table below represents the GRP Program Consultant Invoices and/or Construction Contractor Applications for Payment paid through the end of the report month (Item F).

	Previous 3/31/2014	April 2014 Activity	Year to Date (Thru 4/30/14)
A. Approved Funding	552,334,533.32	2,694.39	552,337,227.71
B. Available Funding After Costs	479,830,196.70	2,694.39	479,832,891.09
C. Approved Contracts			
Phase I	460,000,133.04	3,722,224.27	463,722,357.31
Extensions	714,926.00	0	714,926.00
D. Project Close Out			
Phase I	(807,947.07)	0	(807,947.07)
Extensions	0	0	0
E. Uncontracted Funding	19,923,084.73	(3,719,529.88)	16,203,554.85
F. Invoices Paid *			
Phase I	229,411,589.09	16,362,960.99	245,774,550.08
Extensions	0	0	0
G. Remaining Funds *	250,418,607.61	(16,360,266.60)	234,058,341.01

*Invoices Paid -Figures reflect actual funds paid out as of period end dates noted.

*Remaining Funds-Excludes net investment income



4.0 COST REPORT AND FINANCIAL CONSIDERATIONS (CONTINUED)

4.4 CONTRACT AMENDMENTS AND CHANGE ORDERS

Each of the GRP Program contracts, agreements and work orders listed in Section 3.2 were presented at the GRP Review Committee and the SJRA Board of Directors meetings this month. The following items were authorized by the SJRA Board of Directors for execution by the SJRA General Manager.

- Change Order No. 1 to Construction Contract for Surface Water Transmission Segment T2
- Change Order No. 2 to Construction Contract for Surface Water Transmission Segment T3
- Change Order No. 1 to Construction Contract for Surface Water Receiving Facilities North
- Change Order No. 1 to Construction Contract for Surface Water Receiving Facilities South

4.5 CLAIMS

If and when claims are received, they will be addressed by the GRP Program Team.

4.6 CIP CASH FLOW

The GRP Program CIP cash flow through calendar year 2015 reflects known expenditures through this month as seen in Table 4.1. Estimates for future expenditures are included in Exhibit 2. All active and currently identified future GRP Program projects and initiatives are included in the cash flow. A graph of forecasted monthly expenditures from the referenced cash flow is attached as Exhibit 3.

4.7 CIP BUDGET ESTIMATES AT COMPLETION

4.7.1 GRP Program

The **total gross funds** (including capitalized interest) required to execute Phase I of the GRP Program are currently estimated at \$564,335,358.49. Additionally, all current GRP Program contracts, including their respective

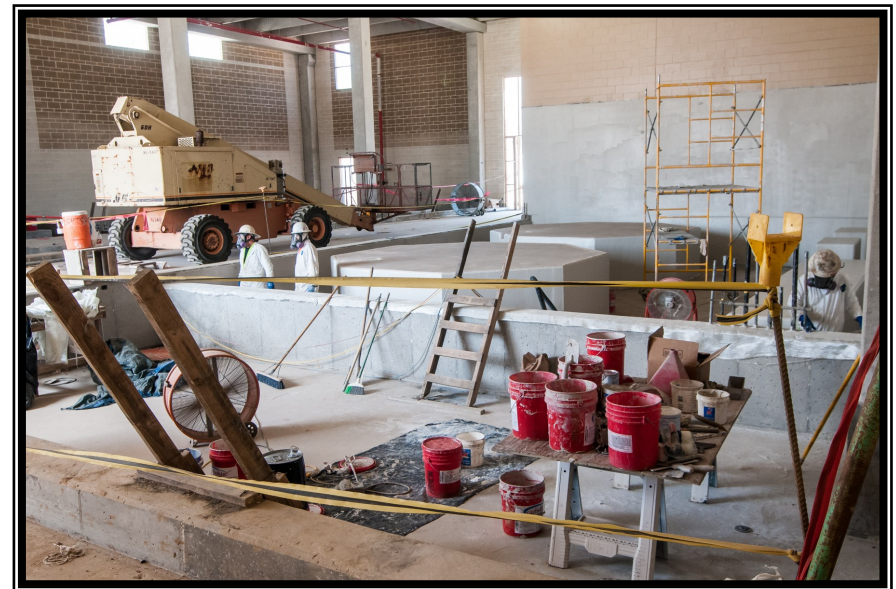
SJRA Board of Director's approved budgeted amounts are listed in Exhibit 6.

4.7.2 GRP Projects

The GRP Program projects remained within their approved contract budgets this month. Exhibit 6 indicates each active GRP Program project and GRP Program contract.

4.8 LAND ACQUISITION

The GRP Program Team, with the support of its various land acquisition consultants, are in the final stages of acquiring land and easements necessary for the surface water transmission system. A total of twenty-four easements still remain to be finalized. Final negotiations to acquire the remaining easements are at or near final stages of completion. A cumulative summary of easement acquisition activity is provided in Exhibit 7.



Workers apply special coatings Chemical Storage Building at Surface Water Facility

5.0 QUALITY ASSURANCE

5.1 FINAL DESIGN

Final design is complete for Surface Water Treatment Plant, Transmission Lines, Standpipe, Fiber Optic Communications Network, and Water Receiving Facilities. Design of permanent access road is underway and the site landscaping will occur in the future.

5.2 PRE-CONSTRUCTION

There were no pre-construction meetings held this month.

5.3 CONSTRUCTION

Quality Assurance efforts by SJRA construction inspectors, as well as the CA&I consultant continued this month on the SWF project. Virtually every building on the SWF project site is progressing timely toward meeting the established SWF substantial completion date. Quality Assurance efforts include regular visits to the project site to monitor and document observed progress. Similar Quality Assurance efforts by SJRA construction inspectors and the CM&I consultant continued this month on the transmission lines.

Left and below: Motor control center in High Service Pump Station and storm sewer installation between GST 1 and High Service Pump Station at Surface Water Facility



6.0 EXHIBITS

Exhibit 1 - GRP Program Schedule

Exhibit 2 - GRP Program Estimate-At-Completion

Exhibit 3 - GRP Program Monthly Forecasted Expenditures

Exhibit 4 - GRP Program Fund Data

Exhibit 5 - Monthly GRP Program Funding Report

Exhibit 6 - GRP Program Current Authorizations

Exhibit 7 - Land Acquisition Summary

Exhibit 8 -GRP Schedule of Revenues & Expenses—Actual & Budget

Exhibit 9 - GRP Program Monthly Meeting Log

Exhibit 10 - Surface Water Facilities (SWF) Construction Photos

Exhibit 11 - Transmission Line System Construction Photos

Exhibit 12 - Surface Water Standpipe Construction Photos



Leak testing contact basins at GAC Building at Surface Water Facilities

Exhibit 2

GRP Program Estimate-At-Completion As of April 30, 2014

SERVICES	ESTIMATE-AT-COMPLETION
Pre-Engineering Phase Services	\$ 4,702,612
(GRP Development, Environmental Studies, Pilot Plant, Surface Water Treatment Plant Site Survey)	
Engineering Phase Services	\$ 43,845,056
(Planning, Preliminary Engineering, Final Engineering, Geotechnical, Survey, Metes & Bounds, Subsurface Utility Investigation, Environmental)	
Construction Phase Services	\$ 28,803,757
(Engineering Services During Construction, Construction Management & Inspection [Transmission System], Construction Administration & Inspection [SWF], Material Testing)	
Construction	\$ 388,351,914
(Surface Water Transmission System, Raw Water Intake and Pump Station, Surface Water Treatment Plant, High Service Pump Station and Ground Storage Tanks, Surface Water Receiving Facilities, Infrastructure, Buildings, Roadways, Site Security, Access Roadways)	
Transmission Segment C1 - Construction	\$ 4,555,350
Transmission Segment C2 - Construction	\$ 9,114,837
Transmission Segment C3 - Construction	\$ 5,220,931
Transmission Segment C4 - Construction	\$ 5,371,167
Transmission Segment T1 - Construction	\$ 14,884,986
Transmission Segment T2 - Construction	\$ 13,575,718
Transmission Segment T3 - Construction	\$ 11,318,194
Transmission Segment W1 - Construction	\$ 15,435,545
Transmission Segment W2 - Construction	\$ 33,101,858
Transmission Segment W3 - Construction	\$ 16,804,928
Transmission Segment W4 - Construction	\$ 3,656,604
Transmission System Standpipe	\$ 2,471,884
Receiving Facilities - Construction	\$ 16,397,714
Surface Water Facilities CMAR (GMP)	\$ 190,704,740
Transmission System Fiber Optic - Construction	\$ 3,029,704
Permanent Access Roadway Construction	\$ 7,505,000
Building No. 1; Access Road; Vegetative Buffer; Construction Materials Testing; SWF Site Vegetation Management; Sanitary Sewer/Access Rd. Relocation	\$ 4,399,773
Other Offsite Construction (Transmission Line Utility Relocations, Receiving Facility Improvements)	\$ 25,090,313
Non-Project Specific Contingency	\$ 5,712,670
Program Management	\$ 10,940,954
(GRP Program Management, Survey, Geotechnical, Transient, Corrosion, Legal Consultants)	
Land Acquisition	\$ 13,858,302
(Legal, Appraisal, Title Research, Land Acquisition Consultants) ⁽¹⁾	
Total ⁽²⁾:	\$ 490,502,595

⁽¹⁾ Includes revisions to land acquisition cost estimates, land cost, and recategorizing of contingency.

⁽²⁾ Bond issuance costs are not included.



Exhibit 3

GRP Program Monthly Forecasted Expenditures As of April 30, 2014

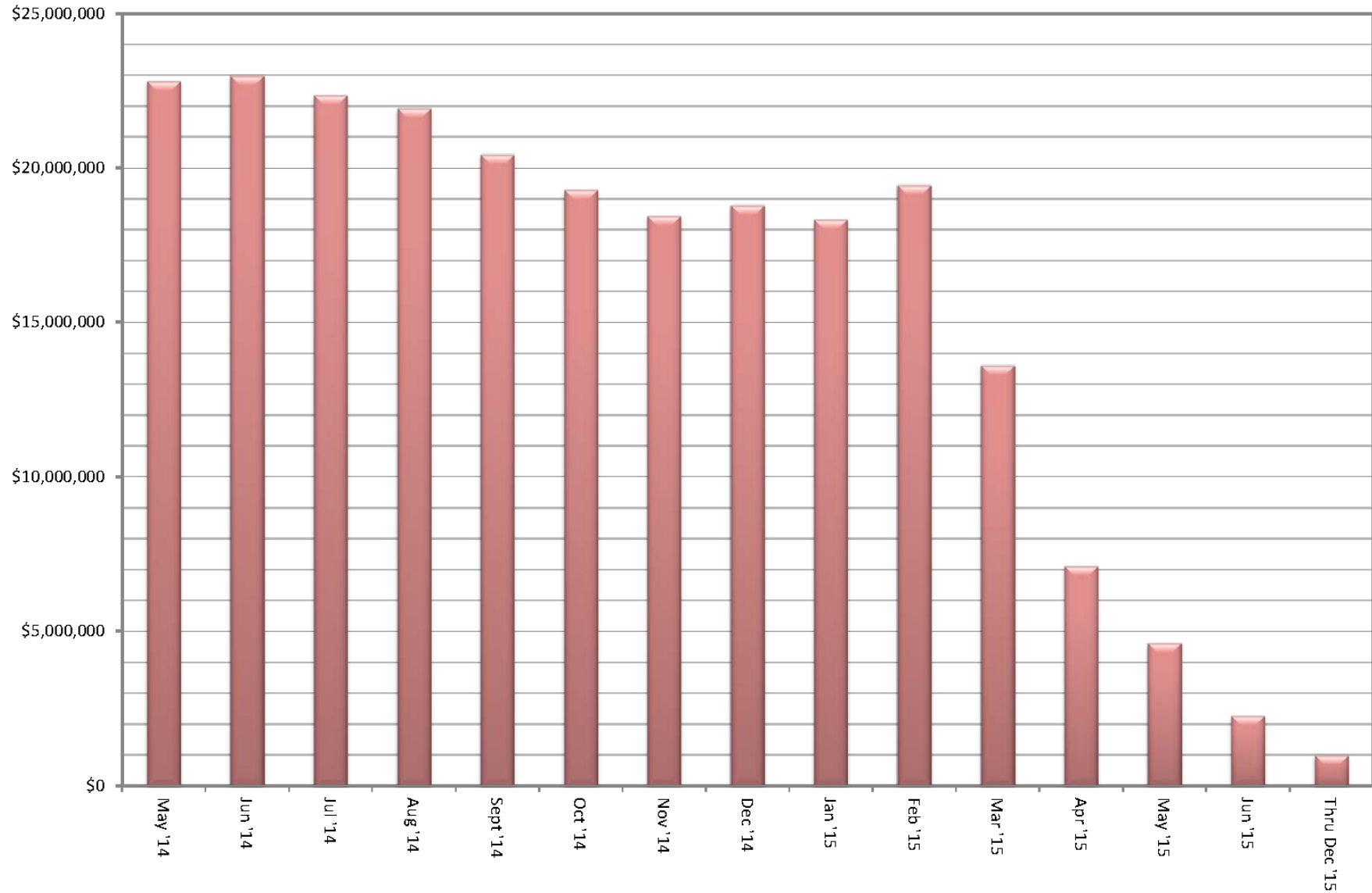


Exhibit 4

GRP Program Fund Data As of April 30, 2014

Funding Source	Amount Authorized by Board To-Date	Interest Rate	Bond Costs	Capitalized Interest	Debt Service Reserve Fund	Net Amount Currently Available	Pending Funding Source
TWDB WIF Bond Issue	\$ 21,500,000.00	.854% - 2.706%	\$ 470,337.08	\$ -	\$ -	\$ 21,029,662.92	
Open Market Bond Issue (Series 2011)	\$ 83,430,358.49	3% - 5.25%	\$ 2,049,764.39	\$ 7,858,241.52	\$ -	\$ 73,522,352.58	
TWDB DFund Series 2011A	\$ 67,470,000.00	1.22% - 4.97%	\$ 751,195.33	\$ 5,166,233.00	\$ 3,859,151.00	\$ 57,693,420.67	
TWDB DFund Series 2012	\$ 175,000,000.00	1.17% - 4.62%	\$ 971,769.13	\$ 12,869,175.00	\$ -	\$ 161,159,055.87	
TWDB DFund Series 2012A	\$ 165,000,000.00	1.26% - 4.62%	\$ 952,269.99	\$ 14,139,669.00	\$ 16,500,000.00	\$ 133,408,061.01	
TWDB Dfund Series 2013	\$ 39,850,000.00	4.50%	\$ 631,279.08	\$ 3,214,292.00	\$ 3,073,489.18	\$ 32,930,939.74	
Subtotal Approved Amounts	\$ 552,250,358.49		\$ 5,826,615.00	\$ 43,247,610.52	\$ 23,432,640.18	\$ 479,743,492.79	
Future Series 2014 (Est.)	\$ 12,085,000.00	4.54%	\$ 321,200.00	\$ 1,004,698.00	\$ -	\$ -	\$ 10,759,102.00
Subtotal Future Amounts	\$ 12,085,000.00		\$ 321,200.00	\$ 1,004,698.00	\$ -	\$ -	\$ 10,759,102.00
Totals	\$ 564,335,358.49		\$ 6,147,815.00	\$ 44,252,308.52	\$ 23,432,640.18	\$ 479,743,492.79	\$ 10,759,102.00

Notes:

1. These values do not include investment income.
2. Green items are estimates only.
3. Series 2011 bond costs include \$681,132.45 for bond insurance and \$459,709.50 for underwriter's discount.



Exhibit 5

Monthly GRP Program Funding Report

Fiscal Year 2014

Through April 2014

	TWDB WIF Bond Issue	Open Market Bond Issue (Series 2011)	TWDB Dfund (Series 2011A)	TWDB Dfund (Series 2012)	TWDB Dfund (Series 2012A)	TWDB Dfund (Series 2013)	Operating (Cash)	Totals
A. Program Budget								
Bond Issue Amount	\$ 21,500,000.00	\$ 83,430,358.49	\$ 67,470,000.00	\$ 175,000,000.00	\$ 165,000,000.00	\$ 39,850,000.00		\$ 552,250,358.49
Operating Funds Commitment							\$ 86,869.22	\$ 86,869.22
Total Investment	\$ 21,500,000.00	\$ 83,430,358.49	\$ 67,470,000.00	\$ 175,000,000.00	\$ 165,000,000.00	\$ 39,850,000.00	\$ 86,869.22	\$ 552,337,227.71
B. Contracted Costs								
Phase I								
Contracts Completed	\$ 17,811,662.84	\$ 19,445,967.11	\$ 7,580,101.59	\$ -	\$ 611,352.00	\$ 3,721,564.70	\$ 14,407.80	\$ 49,185,056.04
Current Contract Values	\$ 3,199,479.00	\$ 40,817,518.83	\$ 47,863,815.57	\$ 161,159,055.87	\$ 126,635,895.11	\$ 27,662,126.48	\$ 72,461.42	\$ 407,410,352.28
Change Orders	\$ -	\$ 4,632,181.12	\$ 720,627.80	\$ -	\$ 1,774,140.07	\$ -	\$ -	\$ 7,126,948.99
Project Close Out	\$ (315,554.78)	\$ (397,783.46)	\$ (29,956.96)	\$ -	\$ (64,626.72)	\$ (25.15)	\$ -	\$ (807,947.07)
Phase I Total:	\$ 20,695,587.06	\$ 64,497,883.60	\$ 56,134,588.00	\$ 161,159,055.87	\$ 128,956,760.46	\$ 31,383,666.03	\$ 86,869.22	\$ 462,914,410.24
Extensions								
Contracts Completed	\$ -	\$ -	\$ -	\$ -	\$ -	\$ -	\$ -	\$ -
Current Contract Values	\$ -	\$ 714,926.00	\$ -	\$ -	\$ -	\$ -	\$ -	\$ 714,926.00
Change Orders	\$ -	\$ -	\$ -	\$ -	\$ -	\$ -	\$ -	\$ -
Project Close Out	\$ -	\$ -	\$ -	\$ -	\$ -	\$ -	\$ -	\$ -
Extensions Total:	\$ -	\$ 714,926.00	\$ -	\$ -	\$ -	\$ -	\$ -	\$ 714,926.00
C. Expenditures								
Phase I								
Paid Previous Fiscal Years	\$ 20,445,604.55	\$ 41,810,521.31	\$ 13,516,375.89	\$ 35,745,194.60	\$ 2,741,339.59	\$ -	\$ -	\$ 114,259,035.94
Paid Current Fiscal Year	\$ 124,935.53	\$ 6,044,865.14	\$ 14,703,897.20	\$ 46,018,404.25	\$ 58,109,481.25	\$ 6,494,481.74	\$ 19,449.03	\$ 131,515,514.14
Phase I Total:	\$ 20,570,540.08	\$ 47,855,386.45	\$ 28,220,273.09	\$ 81,763,598.85	\$ 60,850,820.84	\$ 6,494,481.74	\$ 19,449.03	\$ 245,774,550.08
Extensions								
Paid Previous Fiscal Years	\$ -	\$ -	\$ -	\$ -	\$ -	\$ -	\$ -	\$ -
Paid Current Fiscal Year	\$ -	\$ -	\$ -	\$ -	\$ -	\$ -	\$ -	\$ -
Extensions Total:	\$ -	\$ -	\$ -	\$ -	\$ -	\$ -	\$ -	\$ -
Issuance Costs	\$ 470,337.08	\$ 2,049,764.39	\$ 751,195.33	\$ 971,769.13	\$ 952,269.99	\$ 628,750.00	\$ -	\$ 5,824,085.92
Debt Service Reserve Fund	\$ -	\$ -	\$ 3,859,151.00	\$ -	\$ 16,500,000.00	\$ 3,073,489.18	\$ -	\$ 23,432,640.18
Capitalized Interest	\$ -	\$ 7,858,241.52	\$ 5,166,233.00	\$ 12,869,175.00	\$ 14,139,669.00	\$ 3,214,292.00	\$ -	\$ 43,247,610.52
D. Remaining								
Uncontracted Funds	\$ 334,075.86	\$ 8,309,542.98	\$ 1,558,832.67	\$ (0.00)	\$ 4,451,300.55	\$ 1,549,802.79	\$ -	\$ 16,203,554.85
Funding Balance *	\$ 459,122.84	\$ 25,666,966.13	\$ 29,473,147.58	\$ 79,395,457.02	\$ 72,557,240.17	\$ 26,438,987.08	\$ 67,420.19	\$ 234,058,341.01

*Excluding net investment income



Exhibit 6

GRP Program Current Authorizations As of April 30, 2014

Surface Water Transmission System - Consultant Services

Project	Firm	Amount Authorized by Board
T1	Jones & Carter	\$ 2,202,879.75
T2	Klotz Associates	\$ 1,878,727.49
T3	Espey	\$ 1,892,322.47
W1	LAN	\$ 2,729,523.15
W2	Binkley & Barfield	\$ 3,252,056.39
W3	Cobb Fendley	\$ 4,017,012.00
W4	LJA	\$ 1,366,335.57
C1	Dannenbaum	\$ 961,635.69
C2	Schaumburg & Polk	\$ 1,418,951.72
C3	Kimley Horn	\$ 897,638.59
C4	RG Miller	\$ 387,701.04
Fiber Optic	EMA	\$ 832,533.04
WRFs	Malcom Pirnie/Arcadis	\$ 2,680,366.57
CM&I	Kellog Brown & Root	\$ 8,657,135.48
Subtotal - Surface Water Transmission System		\$ 33,174,818.95

Surface Water Facilities - Consultant Services

Project	Firm	Amount Authorized by Board
WTP	HDR Engineering	\$ 18,583,442.54
HSPS	AECOM	\$ 4,904,748.77
StandPipe	AECOM	\$ 192,235.38
RW&PS	Freese & Nichols	\$ 3,954,773.35
CA&I	CDMSmith	\$ 5,348,633.00
Subtotal - Surface Water Facilities		\$ 32,983,833.04

Program Consultant Services & Other Projects

Project	Firm	Amount Authorized by Board
Program Management	Brown & Gay	\$ 10,695,226.55
Program Survey	Landtech	\$ 514,524.00
Program Geotechnical	Raba Kistner	\$ 145,260.00
Prog Transient Analyses	AECOM	\$ 284,178.11
Access Rd/Misc Service	ACES	\$ 857,366.25
SWF Surveying	S&V Surveying	\$ 66,875.00
Land Acq	KDM	\$ 431,592.70
Land Acq	PAS	\$ 1,413,334.88
Program Environmental	Halff Associates	\$ 1,063,698.87
Program Fiber Optics	EMA	\$ 832,533.04
Program Corrosion	V&A Consulting Engineers	\$ 866,676.00
Program Legal Services & Projects	Multiple	\$ 5,929,235.44
Subtotal - Program Consultant Services & Other Projects		\$ 23,100,500.84

Surface Water Transmission System Extensions - Consultant Services

Project	Firm	Amount Authorized by Board
MUD99/115	IDS Engineering Group	\$ 293,710.00
MUD99/115	Andrews & Kurth - x	\$ 100,000.00
MUD99/115	PAS - x	\$ 200,000.00
MUD99/115	Brown & Gay - x	\$ 121,216.00
Subtotal - Surface Water Facilities		\$ 714,926.00



Exhibit 6 (con't)

GRP Program Current Authorizations As of April 30, 2014

Active or Completed Construction Contracts

Project	Firm	Amount Authorized by Board
GRP Bldg No. 1	Brookstone	\$ 2,008,673.00
Bldg No. 1/Aqua Tx CMT	Aviles Engineering	\$ 123,814.55
Landscape Buffer	Key-Scape Landscape	\$ 53,090.00
Temp Access Road	Lindsey Construction	\$ 977,583.60
Access Road CMT	Terracon Consultants	\$ 10,359.70
Access Road Overlay and Detention	AAA Asphalt	\$ 412,284.59
Access Road Landscape	TreeScapes	\$ 34,165.00
Aqua Texas Sewer	Randy Roan Construction	\$ 547,341.17
Bldg No. 1 Fiber Line	Preferred Technologies	\$ 231,157.56
Surface Water Plant (CMAR)	McCarthy	\$ 190,704,740.00
SWF CMT	Geotest	\$ 1,976,659.00
Transmission System Utility Relocations	Various	\$ 2,125,610.96
Transmission System CMT (T3, W1, W2, W3, W4)	Aviles	\$ 1,601,330.00
Transmission System CMT (T1, T2, C1, C2, C3, C4)	Terracon	\$ 1,006,711.25
Transmission Segment T1	S.J. Louis Construction of Texas Ltd	\$ 14,521,937.14
Transmission Segment T2	Texas Sterling Construction Company	\$ 13,475,718.33
Transmission Segment T3	S.J. Louis Construction of Texas Ltd	\$ 10,918,193.97
Transmission Segment C1A	Garney Companies, Inc.	\$ 3,837,683.40
Transmission Segment C1B	E.P. Brady, LTD.	\$ 683,491.53
Transmission Segment C2	Garney Companies, Inc.	\$ 9,014,837.00
Transmission Segment C3	E.P. Brady, LTD.	\$ 4,972,314.80
Transmission Segment C4	BRH-Garver Construction, L.P.	\$ 5,115,396.90
Transmission Segment W1A	Huff & Mitchell, Inc.	\$ 8,222,000.50
Transmission Segment W1B	Texas Sterling Construction Company	\$ 7,213,544.50
Transmission Segment W2A	Texas Sterling Construction Company	\$ 16,340,258.02
Transmission Segment W2B	Texas Sterling Construction Company	\$ 16,161,600.00
Transmission Segment W3A	Huff & Mitchell, Inc.	\$ 7,880,207.50
Transmission Segment W3B	Garney Companies, Inc.	\$ 8,124,485.50
Transmission Segment W4	Huff & Mitchell, Inc.	\$ 3,656,604.23
Receiving Facilities South	CSA	\$ 7,127,383.00
Receiving Facilities North	Archer Western	\$ 6,160,184.55
Transmission SCADA - Fiber Optic Construction	Fisk Electric Company	\$ 2,885,432.35
Miscellaneous	Other Construction Contracts, Permits, Fees, etc.	\$ 305,163.05
Subtotal - Construction Contracts		\$ 348,429,956.65

Totals

	Amount Authorized by Board
Surface Water Transmission System - Consultant Services	\$ 33,174,818.95
Surface Water Facilities - Consultant Services	\$ 32,983,833.04
Program Consultant Services & Other Projects	\$ 23,100,500.84
Surface Water Transmission System Extensions - Consultant Services	\$ 714,926.00
Active or Completed Construction Contracts	\$ 348,429,956.65
Total	\$ 438,404,035.48



Exhibit 7

GRP Program Land Acquisition Summary As of April 30, 2014

Project	Anticipated Number of Easements to Acquire	Easements Acquired This Month	Total Easements Acquired and Filed	Total Easements Remaining to be Finalized ¹
Transmission System Segment T1	59	0	58	1
Transmission System Segment T2	0	0	0	0
Transmission System Segment T3	18	0	13	5
Transmission System Segment C1	19	0	19	0
Transmission System Segment C2	80	0	78	2
Transmission System Segment C3	34	0	21	13
Transmission System Segment C4	4	0	4	0
Transmission System Segment W1	32	0	32	0
Transmission System Segment W2	10	0	10	0
Transmission System Segment W3	177	1	174	3
Transmission System Segment W4	9	0	9	0
Totals:	442	1	418	24

¹ Note: Includes final cleanup of title on other legal issues, while right of entry may have been required



Exhibit 8

San Jacinto River Authority Groundwater Reduction Plan

Schedule of Revenues & Expenses—Actual and Budget

For the Eight Months Ending April 30, 2014

	Apr	Fiscal Year To Date				Fiscal Budget	
	Actual	Actual	Budget	Variance	% Variance	Total Year Budget	Actual YTD % of Total Year Budget
OPERATING REVENUES							
GRP pumping fees	\$ 2,865,310	\$ 17,792,623	\$ 19,818,289	\$ (2,025,666)	(10%)	\$ 34,118,874	52%
TOTAL OPERATING REVENUES	\$ 2,865,310	\$ 17,792,623	\$ 19,818,289	\$ (2,025,666)	(10%)	\$ 34,118,874	52%
OPERATING EXPENSES							
Payroll & employee benefit expenses	\$ 277,654	\$ 1,857,052	\$ 3,050,836	\$ 1,193,784	39%	\$ 4,644,900	40%
Professional fees	54,722	334,926	539,464	204,538	38%	813,000	41%
Purchased & contracted services	8,478	79,935	159,915	79,979	50%	239,871	33%
Supplies, materials & utilities	24,947	3,326,762	3,538,033	211,271	6%	3,747,401	89%
Maintenance repairs, parts & rentals	1,314	11,249	12,440	1,191	10%	17,160	66%
General & administration	70,425	421,646	565,664	144,018	25%	850,563	50%
TOTAL OPERATING EXPENSES	\$ 437,540	\$ 6,031,569	\$ 7,866,352	\$ 1,834,783	23%	\$ 10,312,895	58%
NON-OPERATING REVENUES & EXPENSES							
Interest on investments	\$ 3,293	\$ 376,977	\$ 465,753	\$ (88,776)	(19%)	\$ 696,936	54%
Other revenues	-	2,129	-	2,129	100%	-	0%
Interest expense	(1,787,500)	(14,200,638)	(8,564,543)	(5,636,095)	66%	(14,844,597)	96%
TOTAL NON-OPERATING (EXCLUDING ITEMS NOT BUDGETED)	\$ (1,784,207)	\$ (13,821,532)	\$ (8,098,790)	\$ (5,722,741)	71%	\$ (14,147,661)	98%
NET INCOME (LOSS) (EXCLUDING ITEMS NOT BUDGETED)	\$ 643,563	\$ (2,060,478)	\$ 3,853,147	\$ (5,913,625)	(153%)	\$ 9,658,318	(21%)
NON-OPERATING REVENUES & EXPENSES (NOT BUDGETED)							
Depreciation	\$ (22,628)	\$ (180,866)	\$ -	\$ (180,866)	100%	\$ -	0%
Amortized debt issuance expense	(500)	(500)	-	(500)	100%	-	0%
TOTAL NON-OPERATING (NOT BUDGETED)	\$ (23,128)	\$ (181,366)	\$ -	\$ (181,366)	100%	\$ -	0%
NET INCOME (LOSS) (BUDGETED AND NOT BUDGETED)	\$ 620,435	\$ (2,241,844)	\$ 3,853,147	\$ (6,094,991)	(158%)	\$ 9,658,318	(23%)

*The Budget is a cash basis budget however the actual interest expense is accrued monthly. Seven months of 2012A Bond payments were funded by the bond issue and are reflected on the Balance Sheet in Restricted Assets Debt Service Funds, Investments. The Interest Expense appears over-budget due to not budgeting for the pre-funded bond payments.



Exhibit 8 (con't)

GRP Division

Clarification of Actual & Budget Variances For Eight Months Ending April 30, 2014

Category	YTD - Driver	April 2014	FYTD 2014
GRP Pumping Fees	Usage variance due to weather conditions.	208	(2,026)
Payroll and related expenses	Budgeted positions not filled as scheduled	87	1,194
Professional Fees	Professional fees less than budgeted.	11	205
Purchased & Contracted Services	Purchased and contracted services less than budgeted.	12	80
Supplies, Materials, Utilities, Maintenance, Repairs, Parts & Rentals	Fuel, office supplies, phones, recruiting and misc. expenses less than budgeted.	18	177
	Reservation Fee-COH 2013 Actuals	-	(123)
	Additional Water Supply	-	157
	Maintenance repairs, parts & rentals expense less than budgeted.	(1)	1
General & Administration	Allocated labor and related expenses less than budgeted, anticipated a quicker rate of growth than has been actualized.	-	144
Non-Operating	Interest/Investment Income	(55)	(87)
	Depreciation expense	(23)	(181)
	Bond Issuance Cost Amort expense	-	-
	Bond interest expense	(217)	(5,636)
		<u>40</u>	<u>(6,095)</u>



Exhibit 9

GRP Program Monthly Meeting Log For April 2014

Meeting	Subject of Meeting	Location	Date	Participants
Montgomery Trace Annual Meeting	Montgomery Trace	LaQuinta Hotel	4/17/2014	Montgomery Trace Members and SJRA Staff
GRP Review Committee Meeting	Board Agenda Items	G&A Building	4/21/2014	GRP Review Committee, SJRA Staff and General Public
Cochran's Crossing Village Association Meeting	Cochran's Crossing	The Woodlands Convention and Visitors Bureau	4/22/2014	Cochran's Crossing residents, SJRA Staff and General Public
SJRA Board of Directors Meeting	Board Agenda Items	G&A Building	4/24/2014	SJRA Board of Directors, SJRA Staff and General Public
Oak Ridge North Neighborhood Meeting	Oak Ridge North	City of Oak Ridge North City Hall	4/30/2014	City of Oak Ridge North residents, SJRA Staff, and General Public
CMAR Coordination Meeting	CMAR	GRP Building	Weekly	SJRA Staff, GRP Program Team and Consultants
Construction Administration and Inspection Meetings	CA&I	GRP Building	Weekly	SJRA Staff, GRP Program Team and CA&I Team
Land Acquisition Conference Calls	Land Acquisition	GRP Building	Weekly	Andrews Kurth and SJRA Staff



Exhibit 9 (con't)

GRP Program Monthly Meeting Log For April 2014

Meeting	Subject of Meeting	Location	Date	Participants
Water Receiving Facilities-South Progress Meeting	WRF-S	GRP Building	Monthly	SJRA Staff, GRP Program Team and Consultant Team
Water Receiving Facilities-North Progress Meeting	WRF-N	GRP Building	Monthly	SJRA Staff, GRP Program Team and Consultant Team
Segments W1A and W1B Progress Meetings	Segments W1A and W1B	GRP Building	Monthly	SJRA Staff, GRP Program Team and Consultant Team
Segments W2A and W2B Progress Meetings	Segments W2A and W2B	GRP Building	Weekly	SJRA Staff, GRP Program Team and Consultant Team
Segments T1, T2 and T3 Progress Meetings	Segments T1, T2 and T3	GRP Building	Monthly	SJRA Staff, GRP Program Team and Consultant Team
Segments W3, W4, C1, C2, C3, and C4 Monthly Status Meetings	Segments W3, W4, C1, C2, C3, and C4	GRP Building	Monthly	SJRA Staff, GRP Program Team and Consultant Team
Standpipe Progress Meeting	Standpipe	GRP Building	Monthly	SJRA Staff, GRP Program Team and Consultant Team
Surface Water Facility Progress Meeting	Surface Water Facilities	GRP Building	Bi-Monthly	SJRA Staff, CMAR, CA&I and Consultant Team



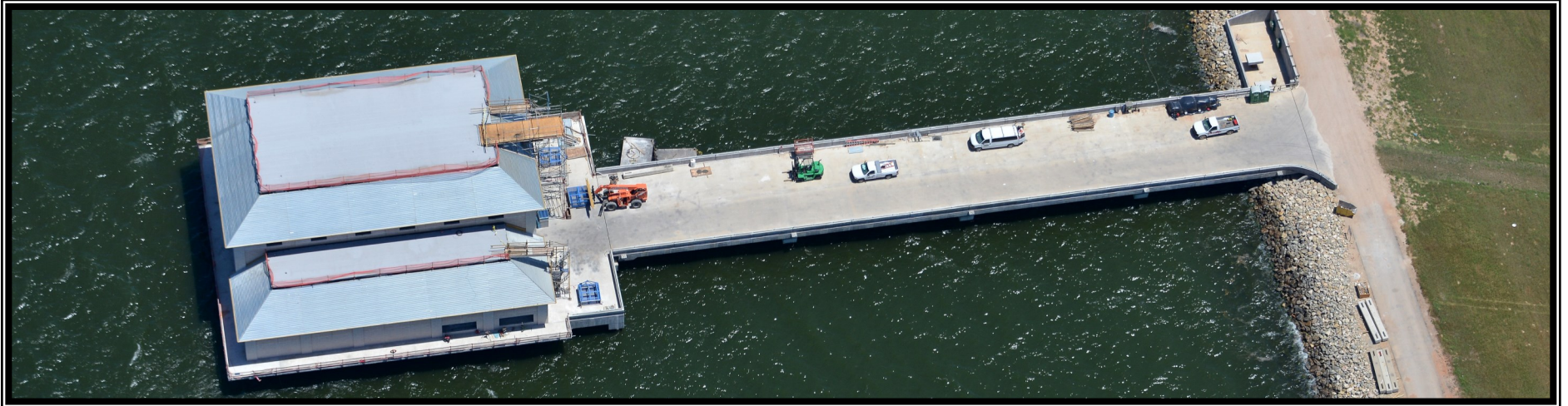
Surface Water Facilities Construction Photos



EXHIBIT 10 SWF Construction Photos



EXHIBIT 10 (con't) SWF Construction Photos



❶ *Divers and construction crew preparing for placement of pump barrels into Lake Conroe at Raw Water Intake*

EXHIBIT 10 (con't) SWF Construction Photos



❶ *Pump barrels in place at Raw Water Intake and Pump Station*

EXHIBIT 10 (con't) SWF Construction Photos

Water Treatment Process Structures



Aerial view of Membrane Building and Pretreatment Facility

② *Preparation of equipment at Pretreatment Facility*

EXHIBIT 10 (con't) SWF Construction Photos

Water Treatment Process Structures



③ Equipment racks and piping at the Membrane Building

EXHIBIT 10 (con't) SWF Construction Photos

Water Treatment Process Structures



④ *Aerial view of the Granulated Activated Carbon Building*

EXHIBIT 10 (con't) SWF Construction Photos

Water Treatment Process Structures



④ *Contactor underdrain in Granulated Activated Carbon Building*

EXHIBIT 10 (con't) SWF Construction Photos

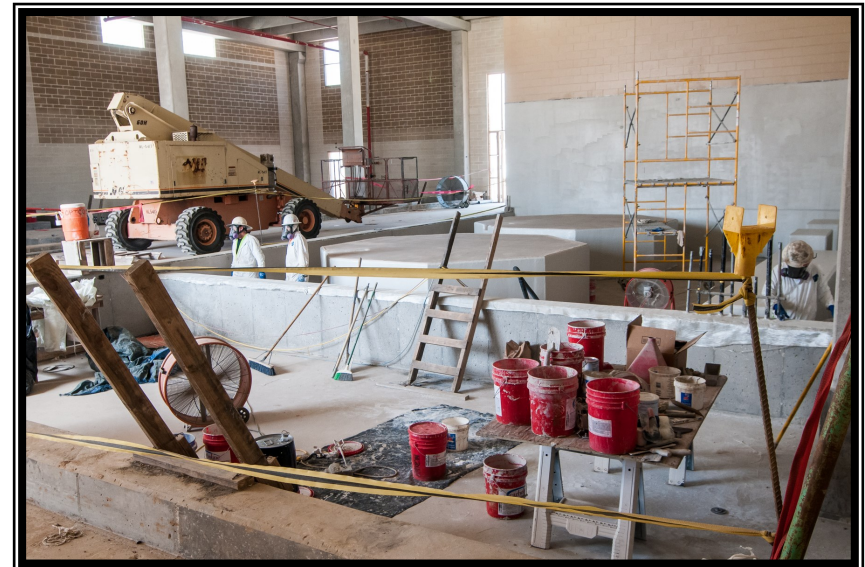
Water Treatment Process Structures



⑤ *Aerial view of the Chemical Storage Facilities*

EXHIBIT 10 (con't) SWF Construction Photos

Water Treatment Process Structures



5 Interior and exterior views at the Chemical Storage Facilities

EXHIBIT 10 (con't) SWF Construction Photos

Finished Water Process Structures



Aerial view of GSTs 1 & 2, High Service Pump Station and Blower Building

EXHIBIT 10 (con't) SWF Construction Photos

Finished Water Process Structures



⑥ *Interior view of High Service Pump Station*

EXHIBIT 10 (con't) SWF Construction Photos

Finished Water Process Structures



6 Motor control center at High Service Pump Station

EXHIBIT 10 (con't) SWF Construction Photos

Finished Water Process Structures



⑥ *Discharge headers at High Service Pump Station*

EXHIBIT 10 (con't) SWF Construction Photos

Finished Water Process Structures



⑦ *Exterior view of Blower Building*

Interior view—Cleaning and preparation for blower equipment installation



EXHIBIT 10 (con't) SWF Construction Photos

Process Residual Treatment Disposal Structures



⑧ *Aerial view of Solids Dewatering Building*

EXHIBIT 10 (con't) SWF Construction Photos

Process Residual Treatment Disposal Structures



⑧ *Masonry installation at Solids Dewatering Building*

EXHIBIT 10 (con't) SWF Construction Photos

Process Residual Treatment Disposal Structures



9 Aerial view of the Backwash Equalization Basin

EXHIBIT 10 (con't) SWF Construction Photos

Process Residual Treatment Disposal Structures



9 *Pump station masonry installation at Backwash Equalization Basin*

EXHIBIT 10 (con't) SWF Construction Photos

Process Residual Treatment Disposal Structures



⑩ *Aerial view of Sludge Thickeners*

EXHIBIT 10 (con't) SWF Construction Photos

Process Residual Treatment Disposal Structures



⑩ *Concrete column installation continues at Sludge Thickeners*

EXHIBIT 10 (con't) SWF Construction Photos

Operational Structures



11 *Aerial view of Operations Building*

EXHIBIT 10 (con't) SWF Construction Photos

Operational Structures



11 *Roof framing and masonry installation at Operations Building*

EXHIBIT 10 (con't) SWF Construction Photos

Operational Structures



12 *Diesel fuel reservoirs at Electrical Facilities*

Transmission Line System Construction Photos



EXHIBIT 11 Transmission Line System Construction Photos

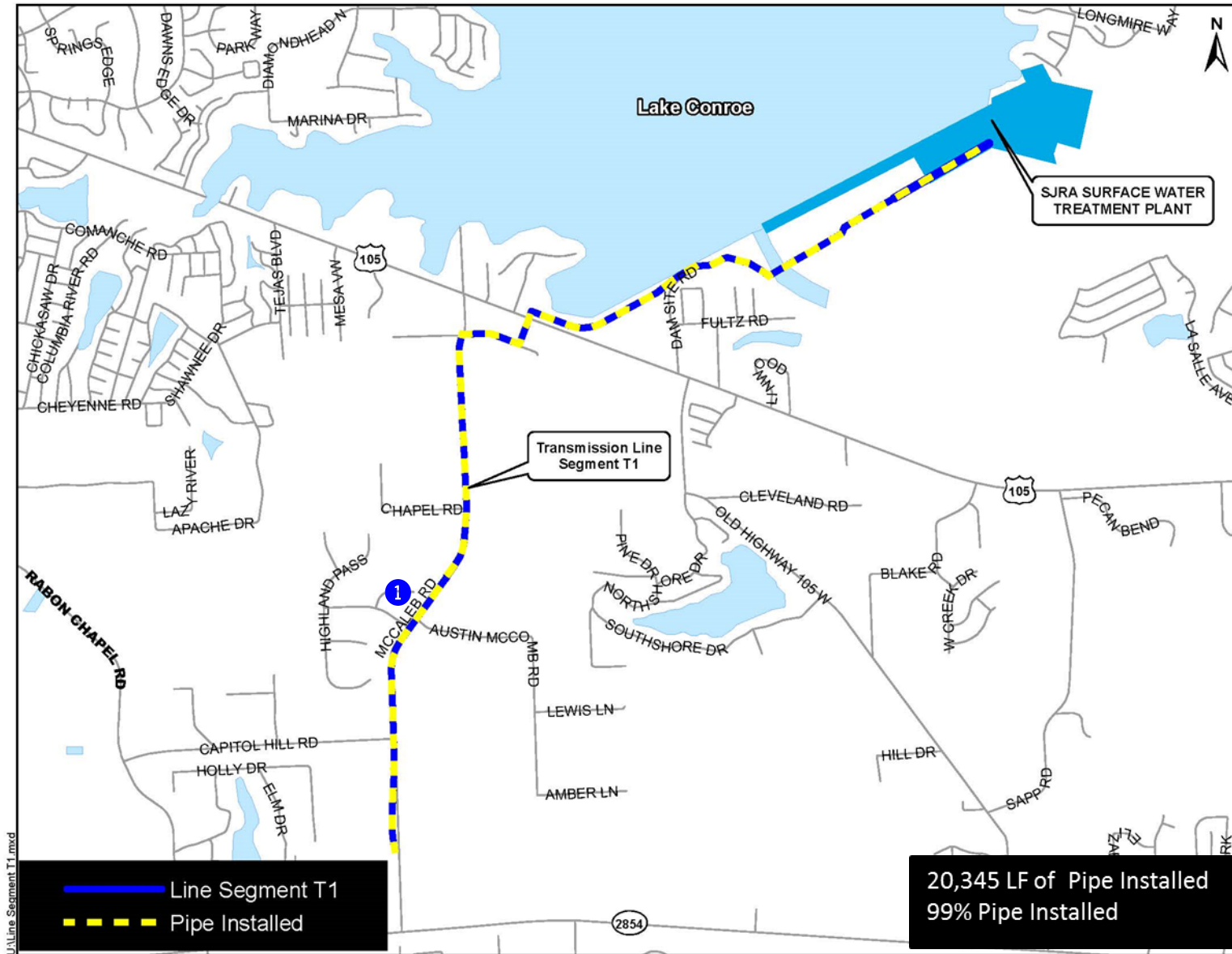


EXHIBIT 11 (con't) Transmission Line System Construction Photos



① *Segment T1 - Asphalt pavement repairs along McCaleb Road*

EXHIBIT 11 (con't) Transmission Line System Construction Photos

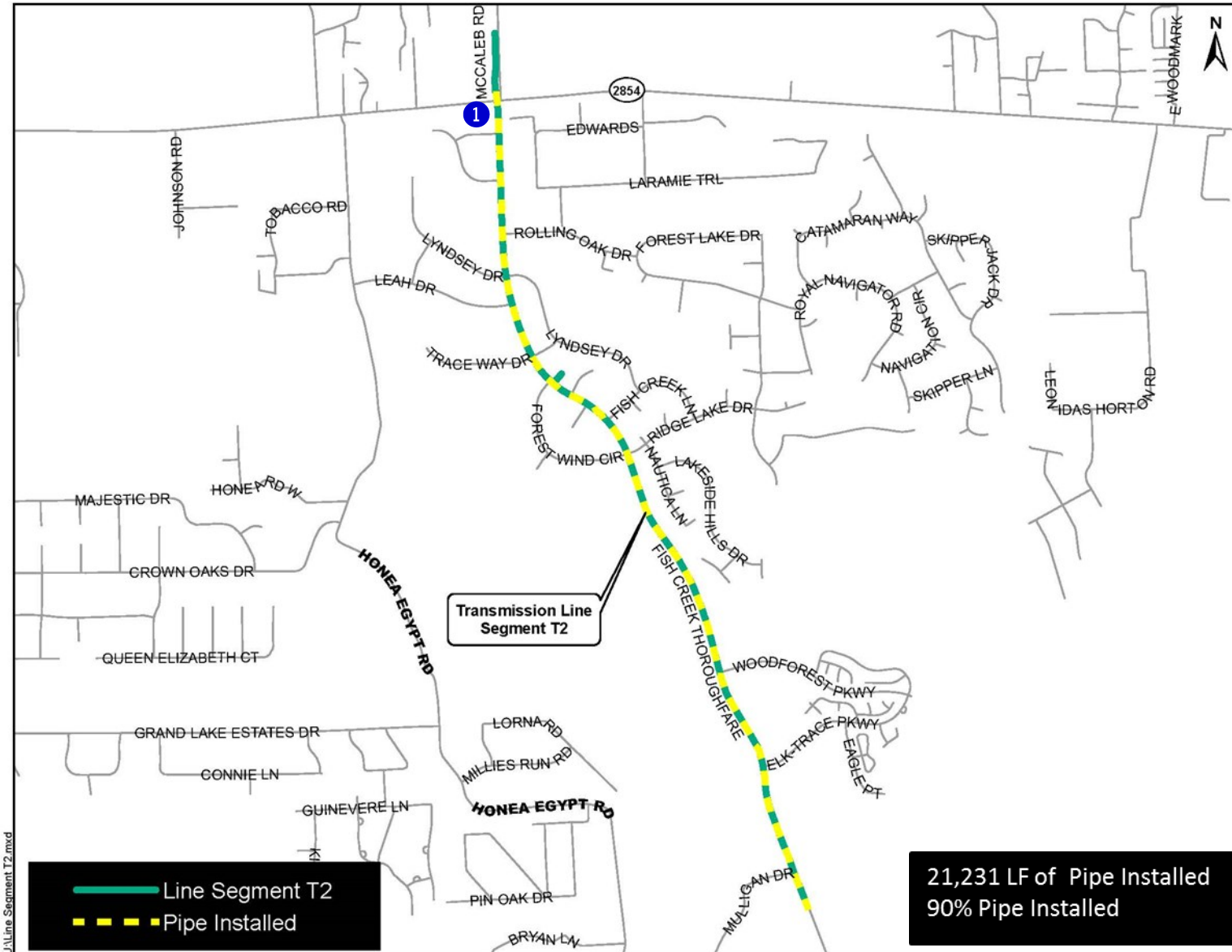


EXHIBIT 11 (con't) Transmission Line System Construction Photos



① Segment T2 - 54-inch pipe installation at FM 2854

EXHIBIT 11 (con't) Transmission Line System Construction Photos

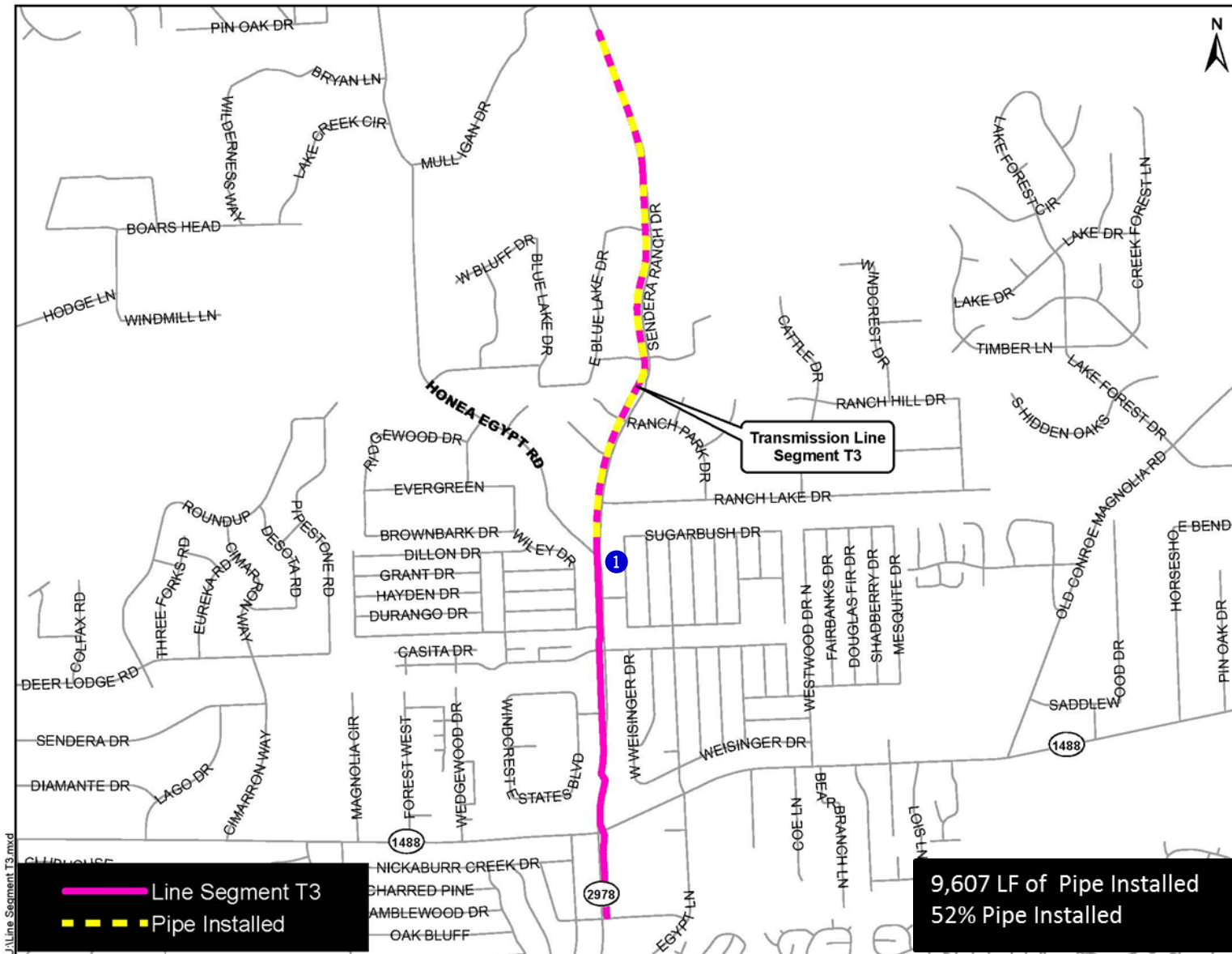


EXHIBIT 11 (con't) Transmission Line System Construction Photos



① *Segment T3—54-inch pipe installation along Sendera Ranch Road*

EXHIBIT 11 (con't) Transmission Line System Construction Photos

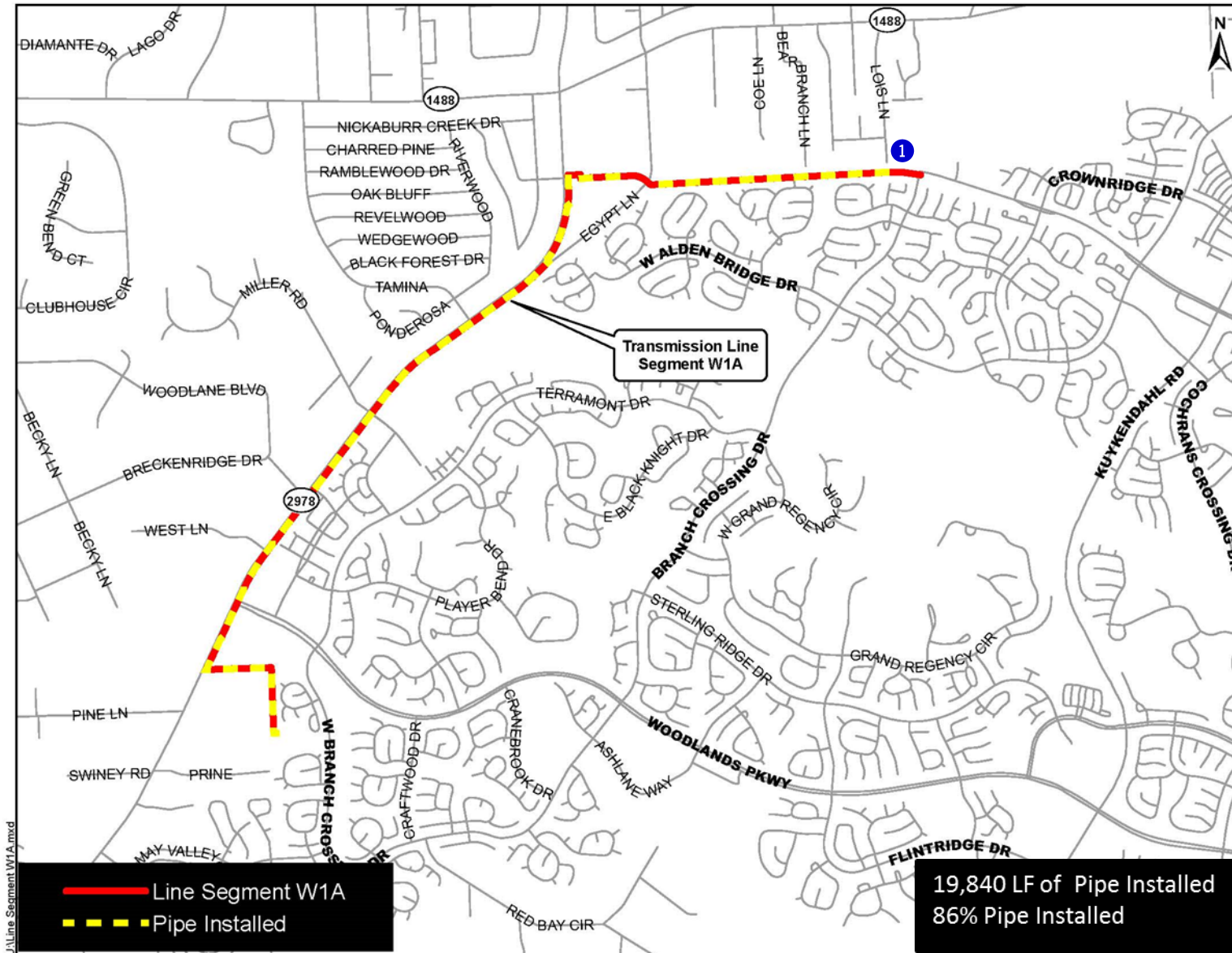


EXHIBIT 11 (con't) Transmission Line System Construction Photos



① Segment W1A—12-inch water line relocation at the intersection of Branch Crossing and Research Forest

EXHIBIT 11 (con't) Transmission Line System Construction Photos

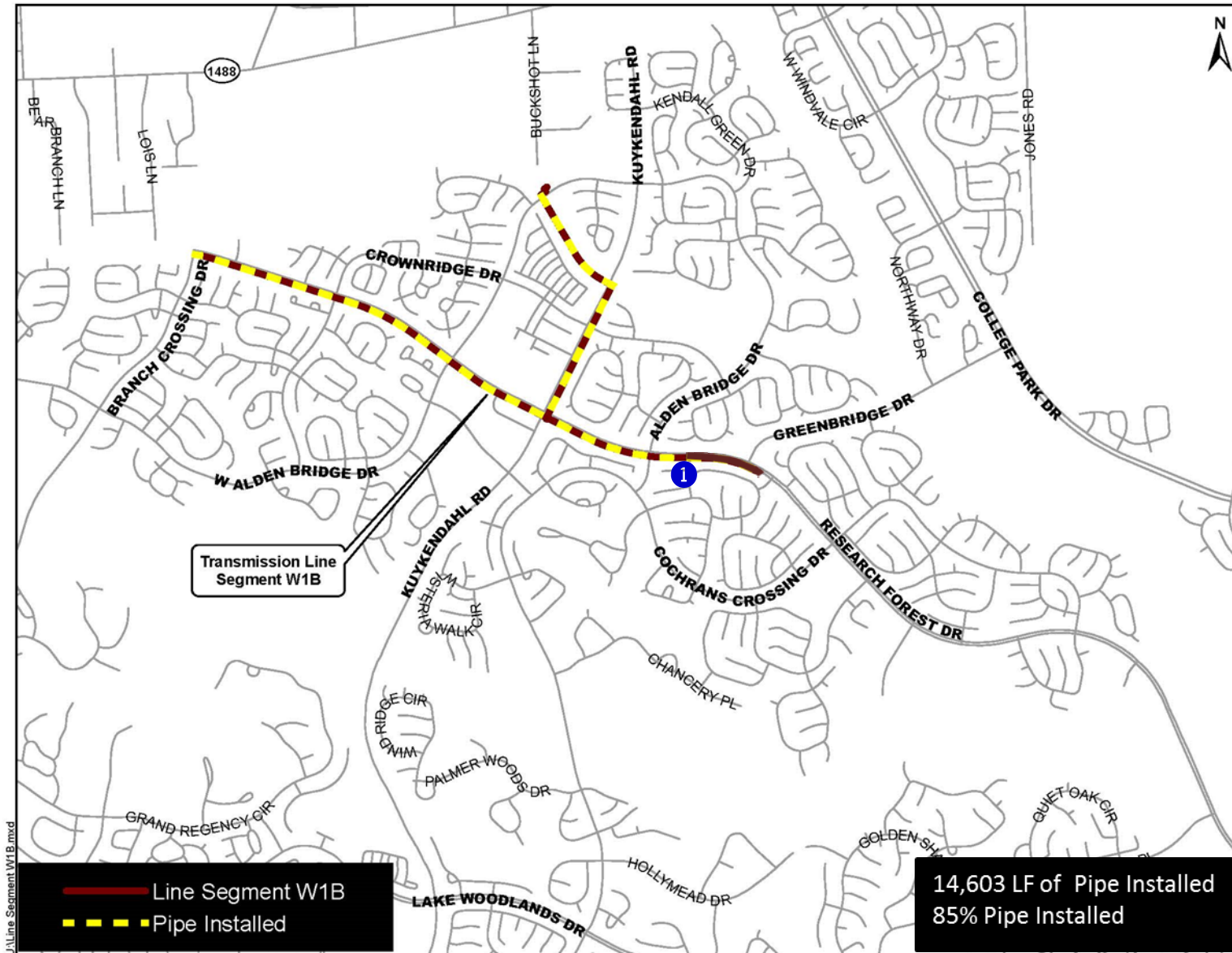


EXHIBIT 11 (con't) Transmission Line System Construction Photos



① *Segment W1B - 42-inch pipe installation along Research Forest Drive*

EXHIBIT 11 (con't) Transmission Line System Construction Photos

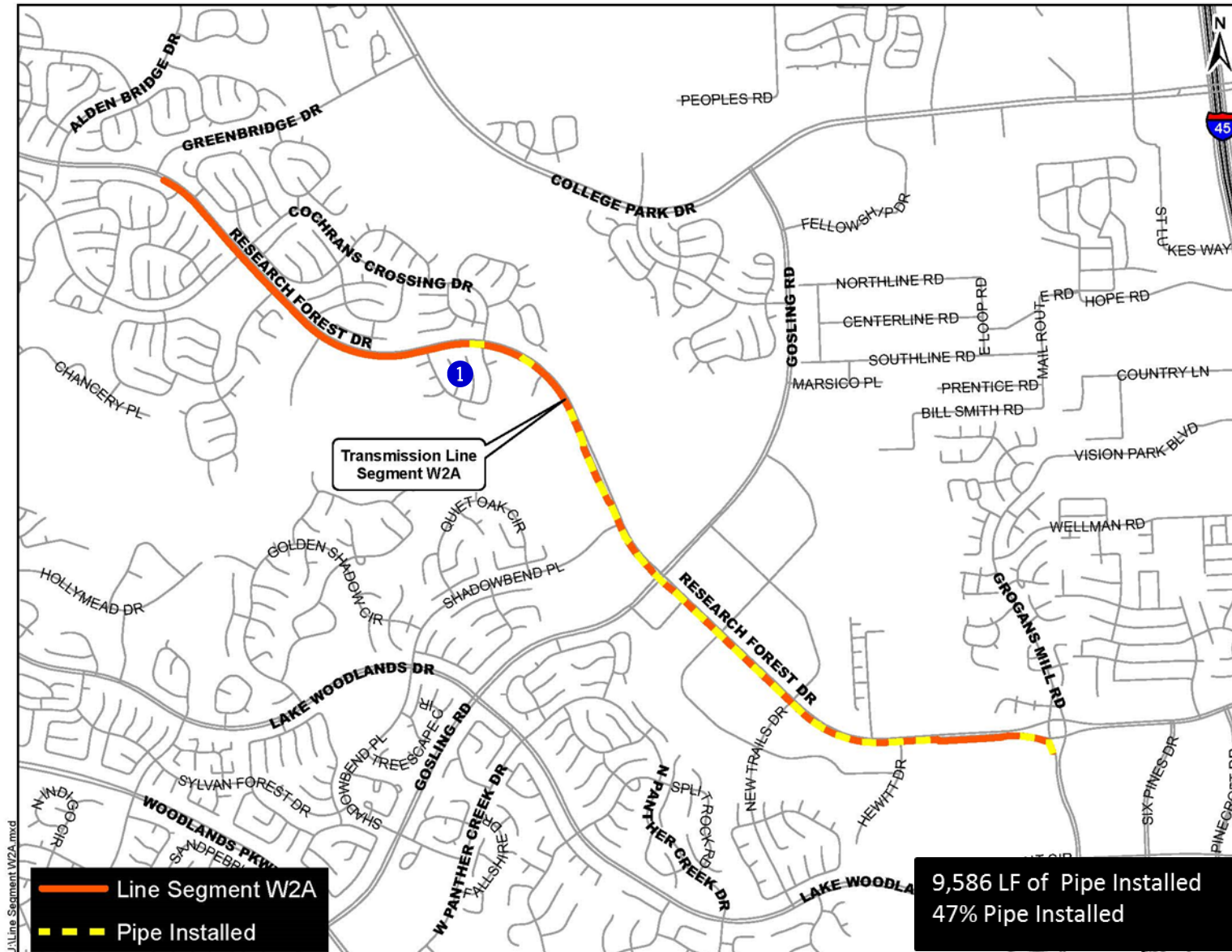


EXHIBIT 11 (con't) Transmission Line System Construction Photos



① Segment W2A - 42-inch pipe installation along Research Forest Drive



EXHIBIT 11 (con't) Transmission Line System Construction Photos

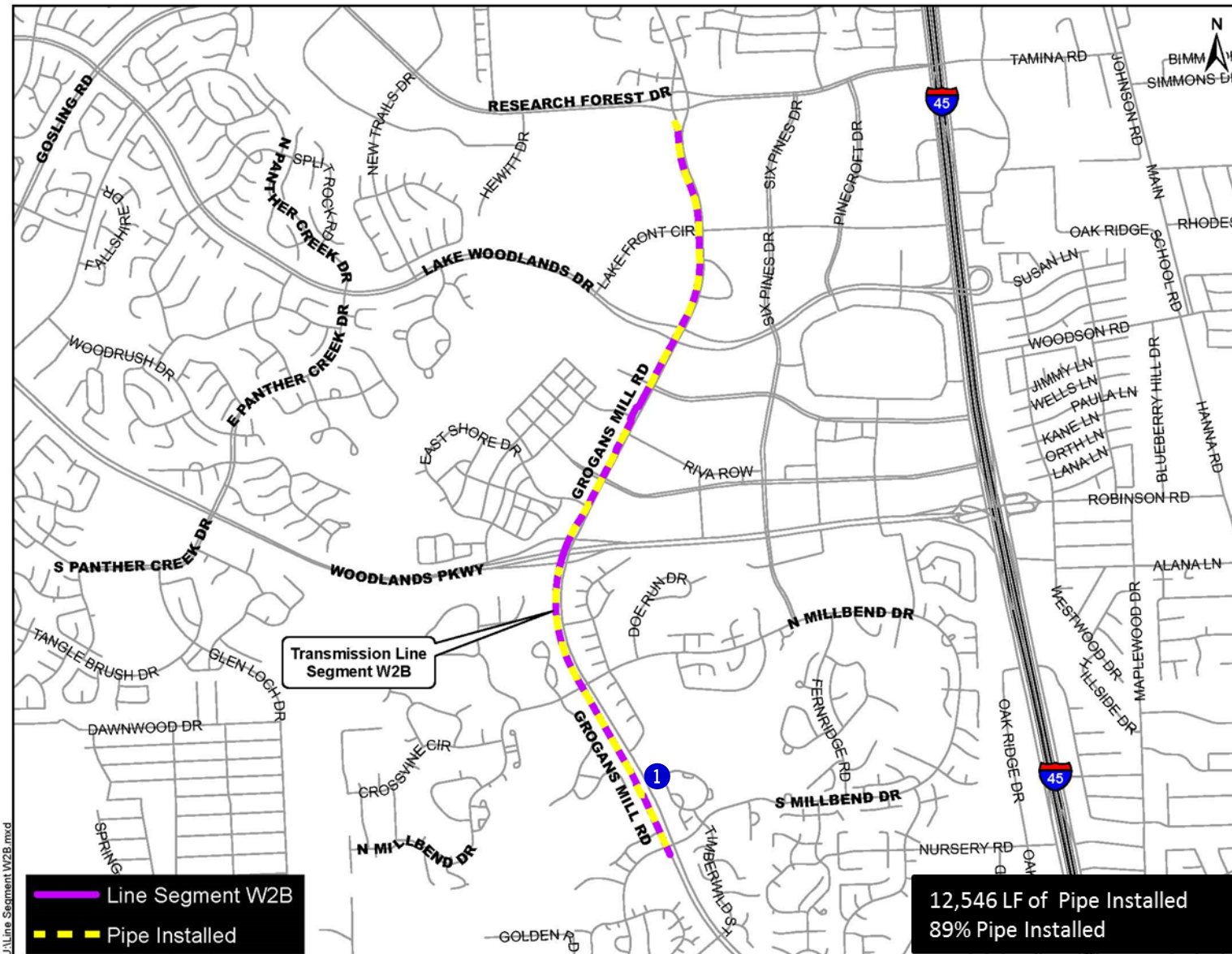


EXHIBIT 11 (con't) Transmission Line System Construction Photos



① *Segment W2B - 30-inch aerial pipe installation on Grogans Mill Road at bridge crossing*

EXHIBIT 11 (con't) Transmission Line System Construction Photos

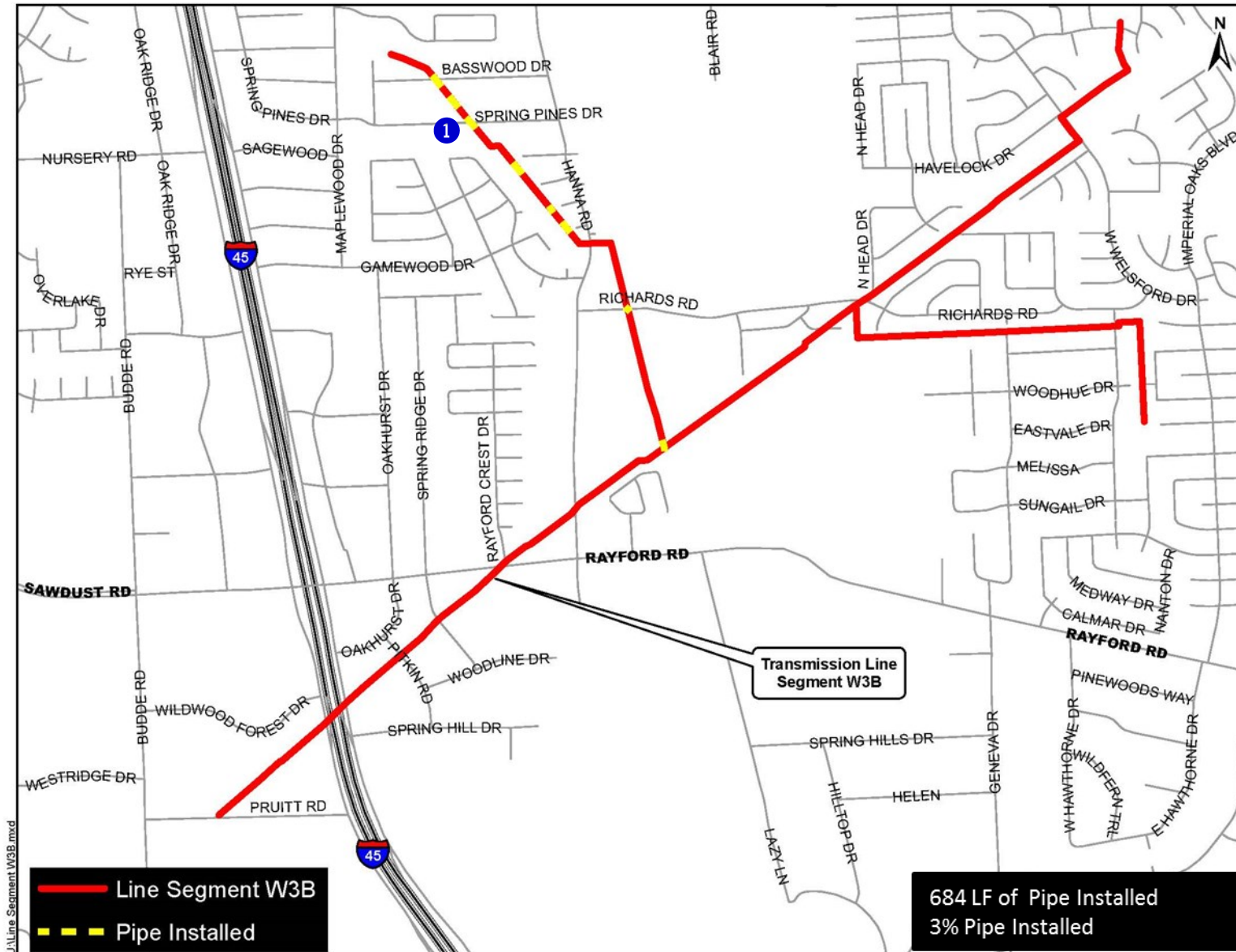


EXHIBIT 11 (con't) Transmission Line System Construction Photos



① *Segment W3B— Pipe installation along Montgomery County Drainage District right-of-way*

EXHIBIT 11 (con't) Transmission Line System Construction Photos

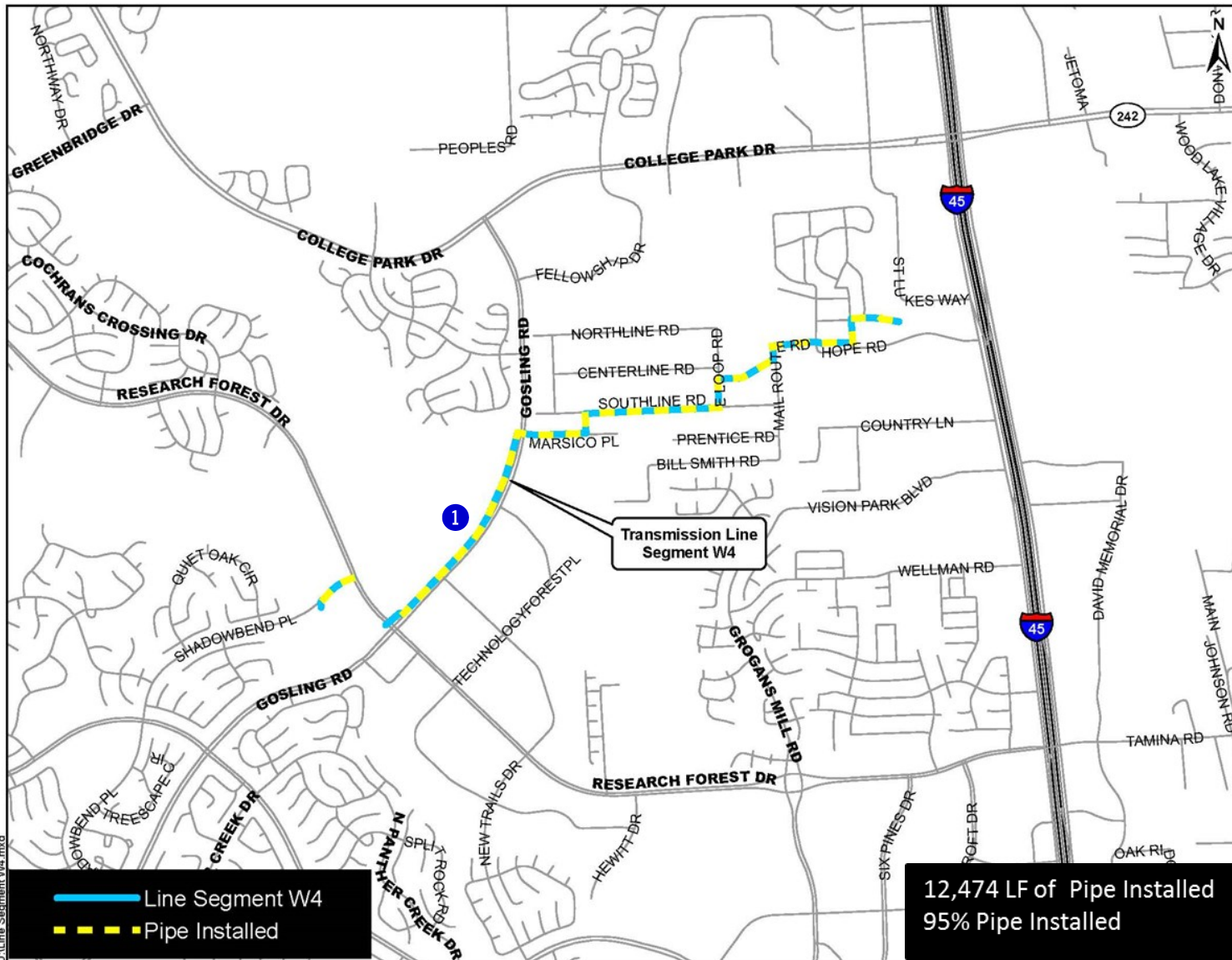


EXHIBIT 11 (con't) Transmission Line System Construction Photos



❶ *Segment W4 - 24-inch pipe and fiber optic conduit installation on Gosling Road*

EXHIBIT 11 (con't) Transmission Line System Construction Photos

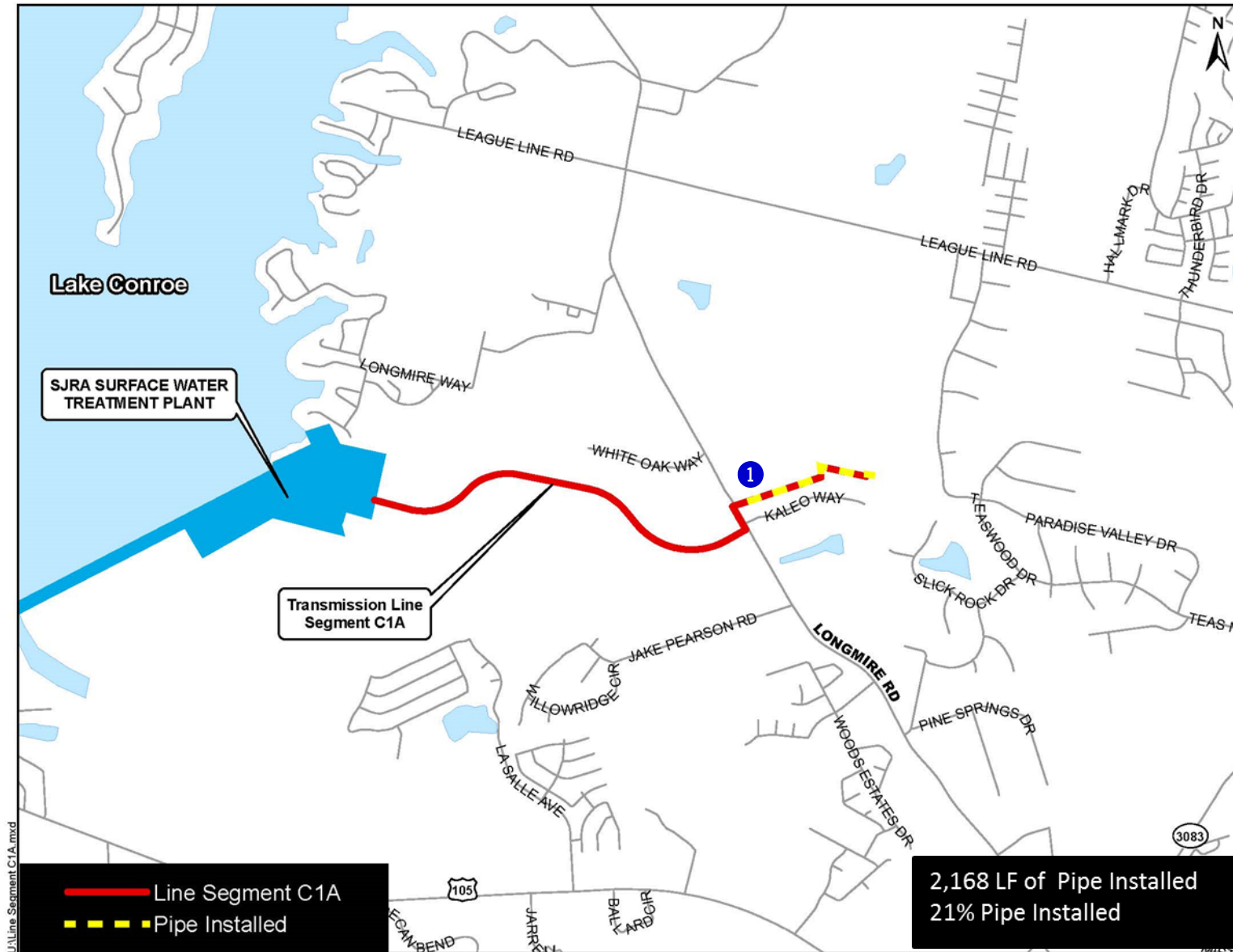


EXHIBIT 11 (con't) Transmission Line System Construction Photos



① *Segment C1A - Tunnel installation at Longmire Road*

EXHIBIT 11 (con't) Transmission Line System Construction Photos

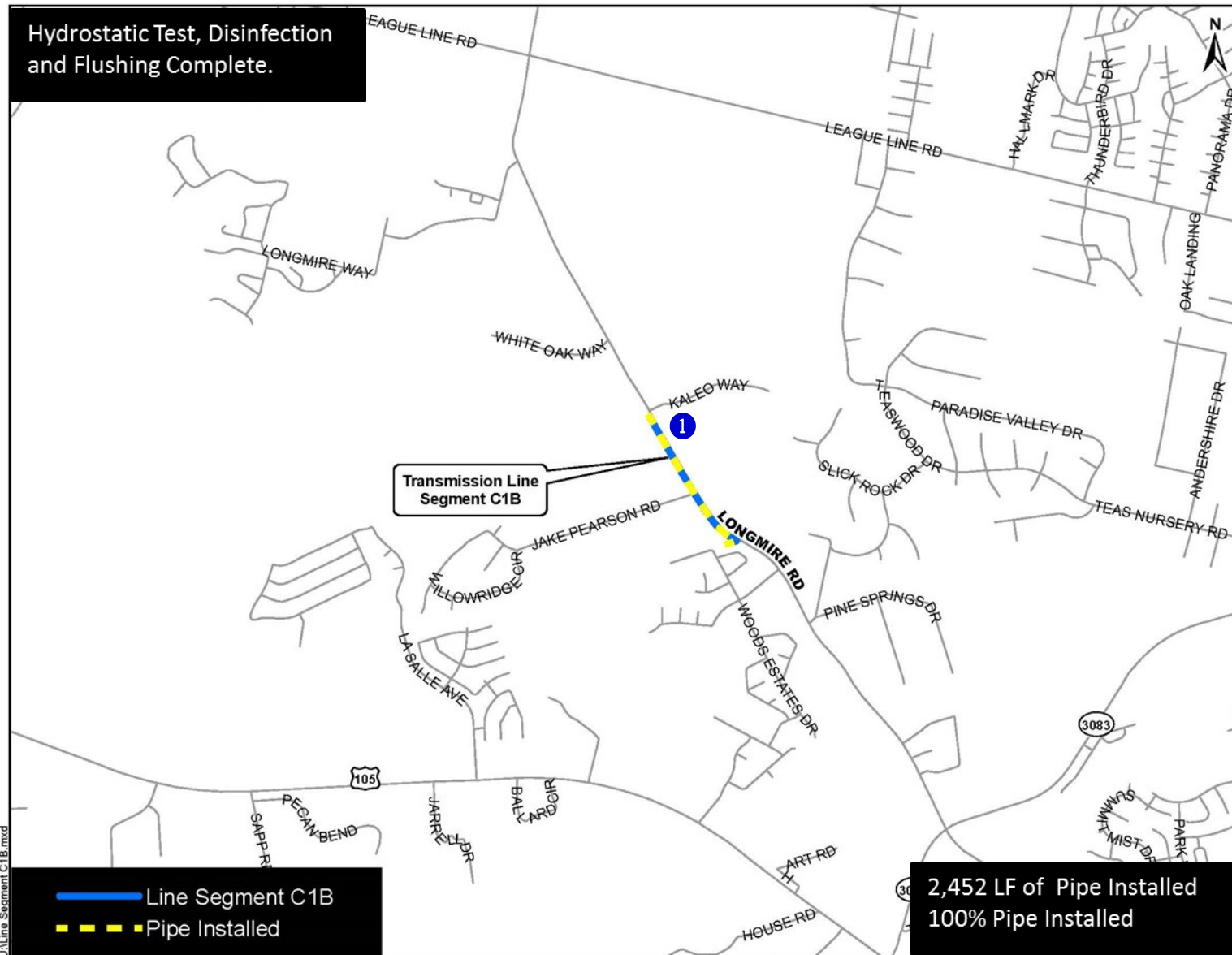


EXHIBIT 11 (con't) Transmission Line System Construction Photos



① *Segment C1B—Ground box and fiber optic conduit installation*

EXHIBIT 11 (con't) Transmission Line System Construction Photos

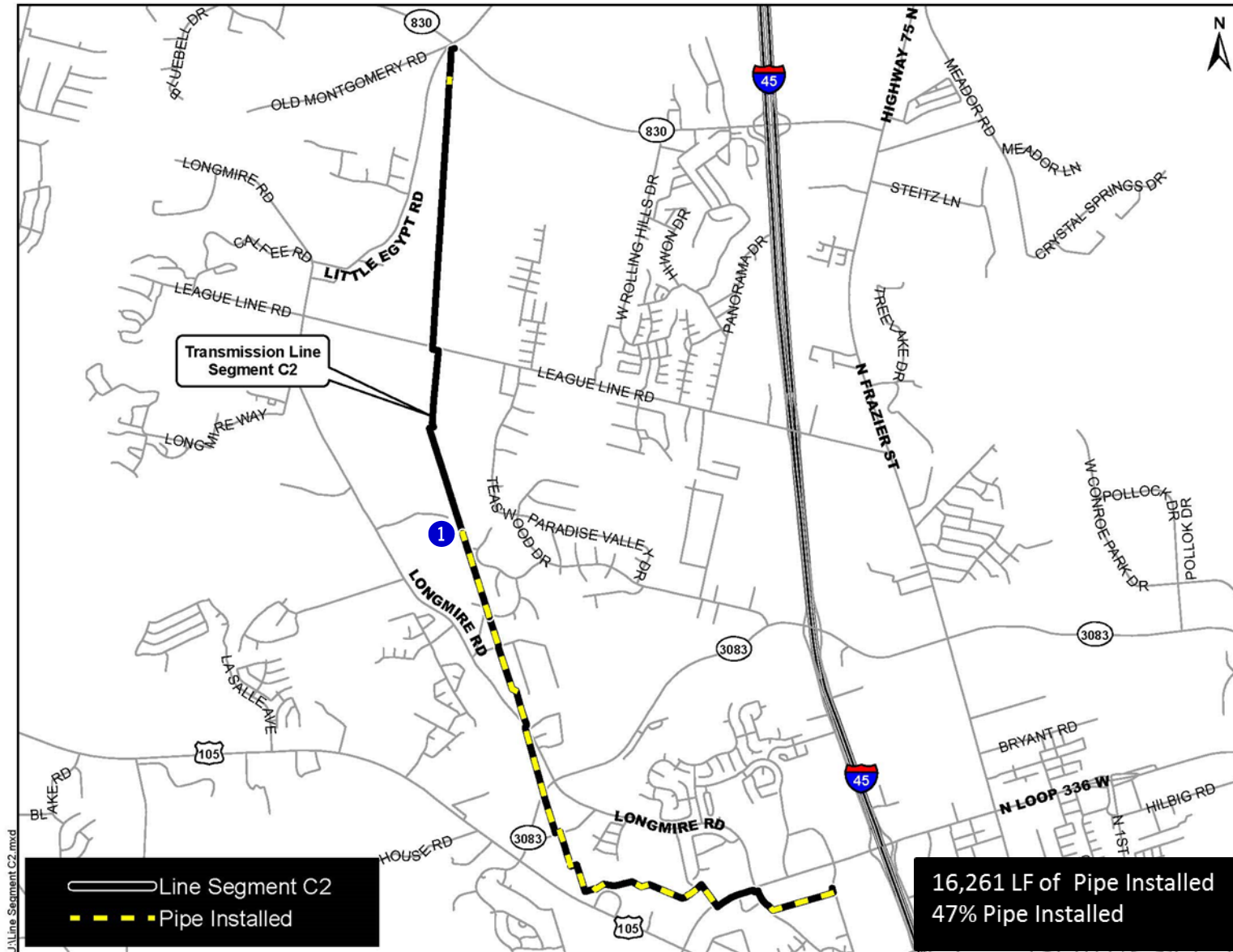


EXHIBIT 11 (con't) Transmission Line System Construction Photos



❶ *Segment C2— Butterfly valve installation along Entergy easement*

EXHIBIT 11 (con't) Transmission Line System Construction Photos

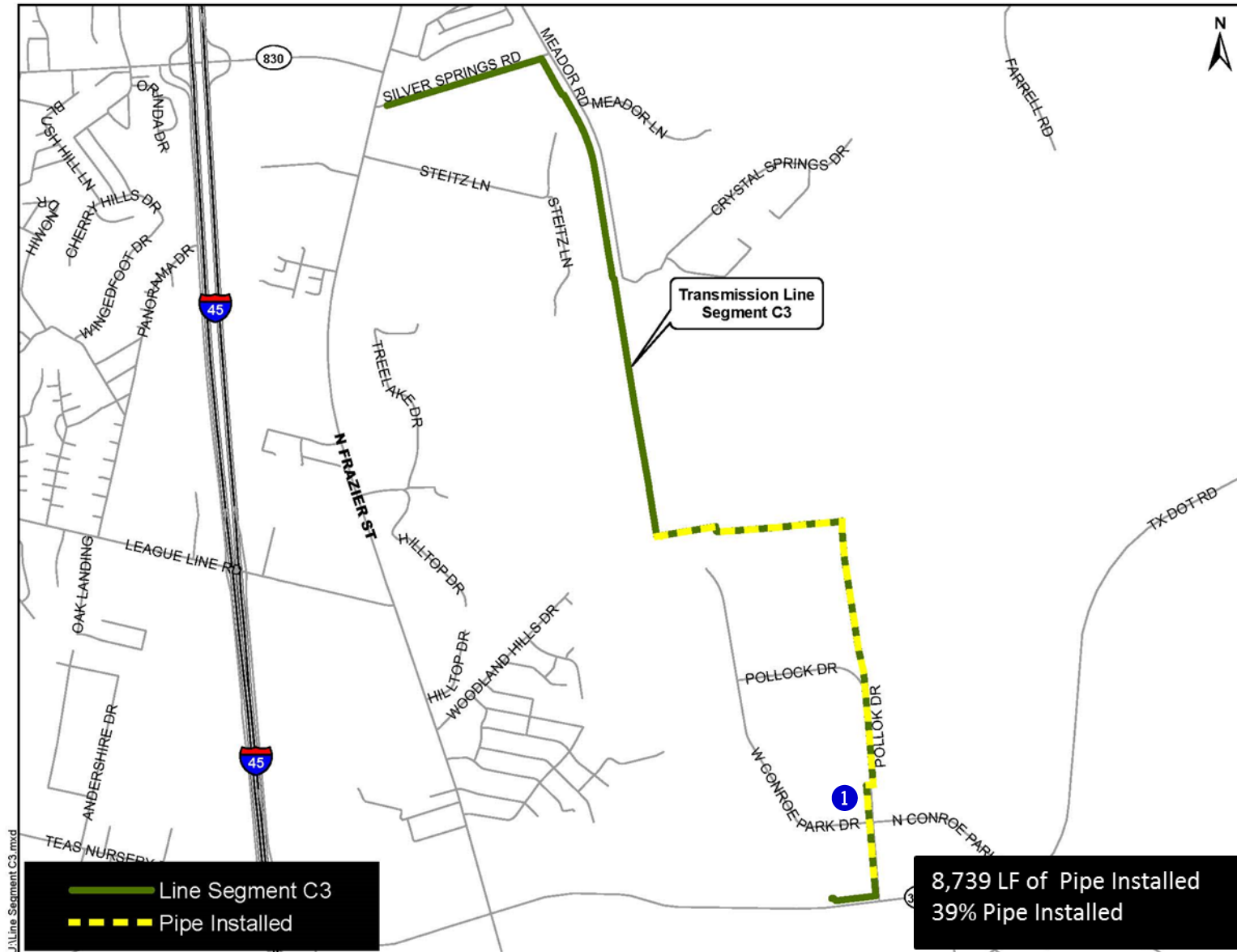


EXHIBIT 11 (con't) Transmission Line System Construction Photos



① *Segment C3—Valve access manhole installation along Pollock Road*

EXHIBIT 11 (con't) Transmission Line System Construction Photos

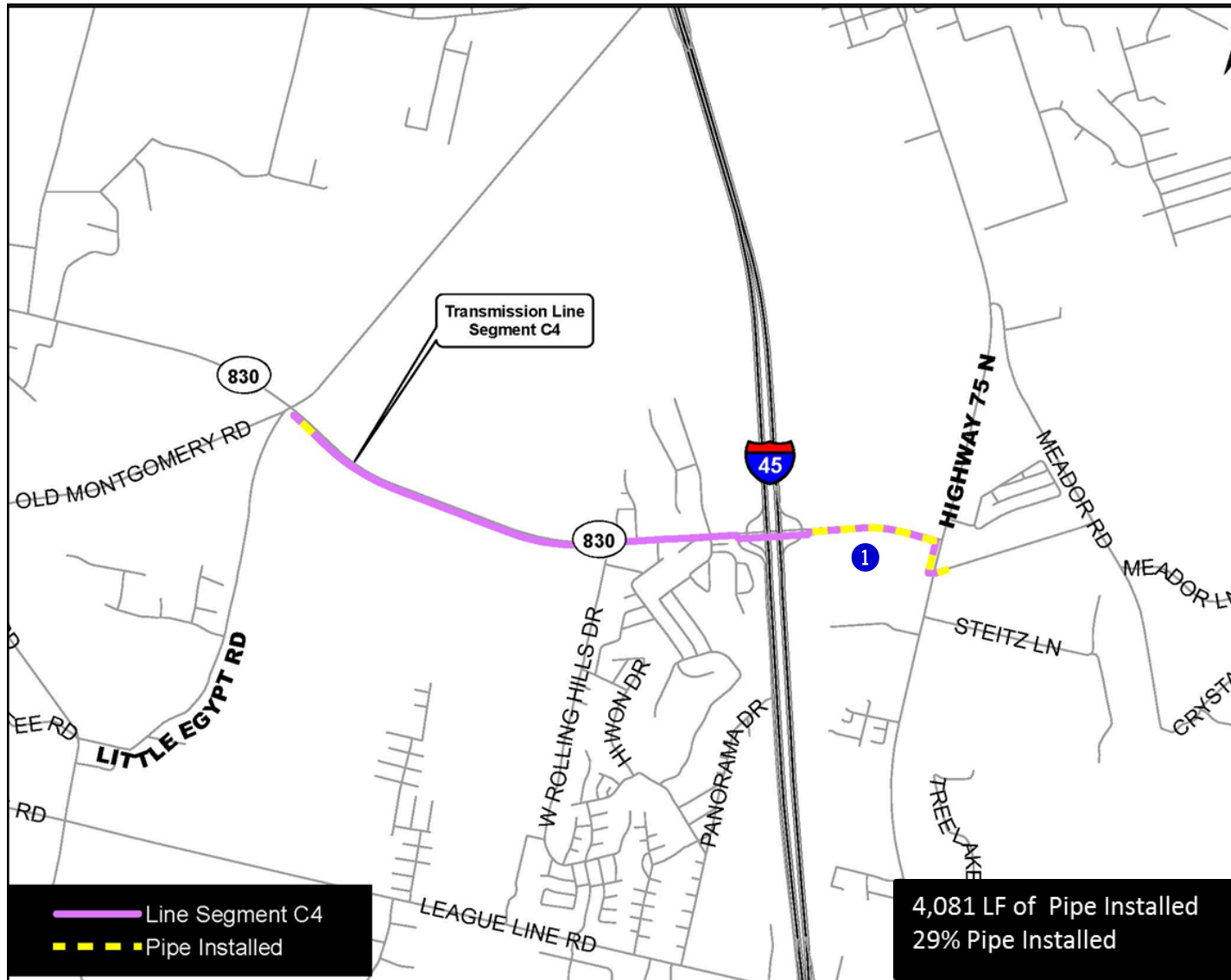


EXHIBIT 11 (con't) Transmission Line System Construction Photos



① *Segment C4—24-inch pipe and restrained joint installation along FM 830*

EXHIBIT 11 (con't) Transmission Line System Construction Photos

WATER RECEIVING FACILITIES—NORTH

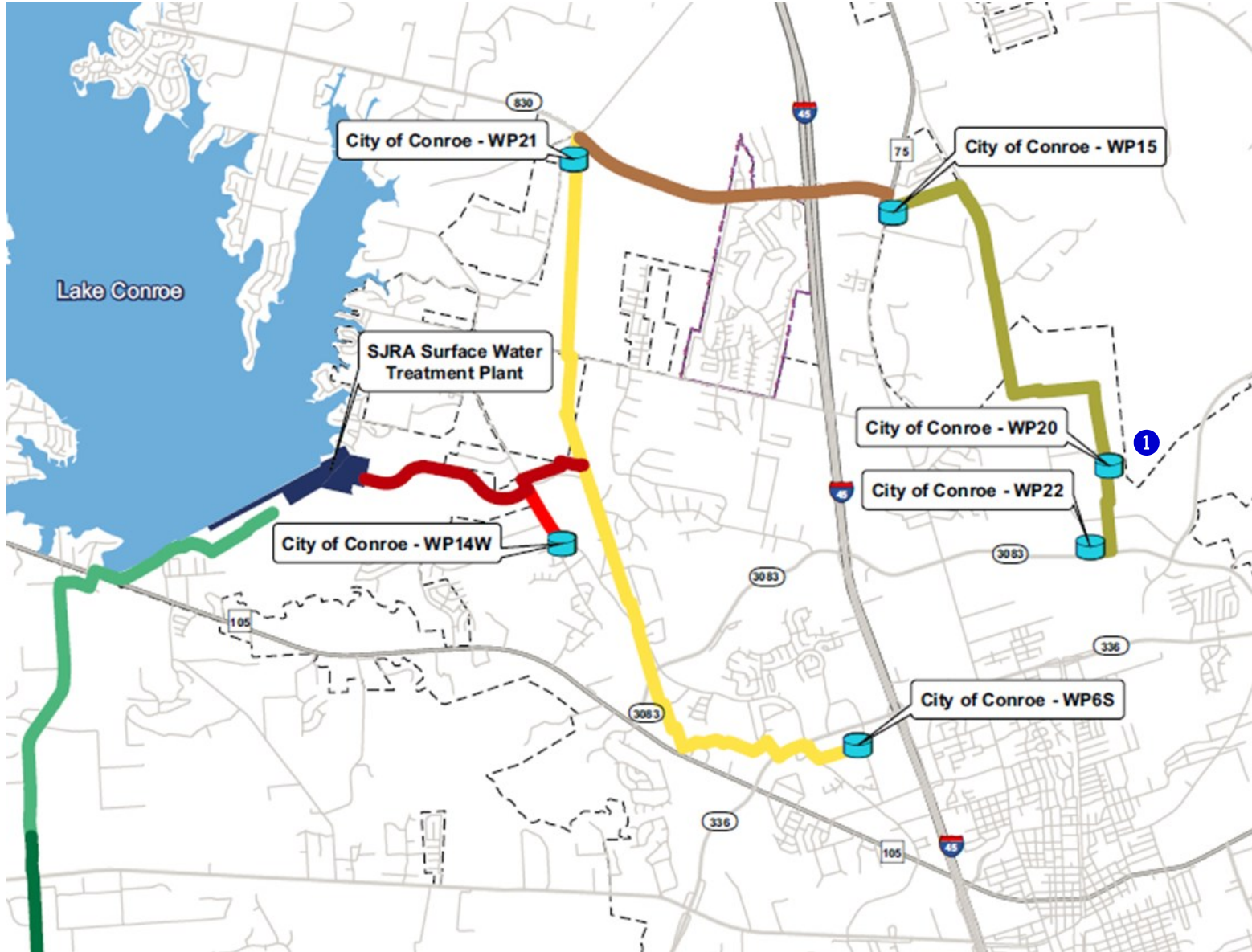


EXHIBIT 11 (con't) Transmission Line System Construction Photos



❶ *Water Receiving Facilities - North—Valve access manhole installation at Conroe Water Plant No. 20*

EXHIBIT 11 (con't) Transmission Line System Construction Photos

WATER RECEIVING FACILITIES—SOUTH

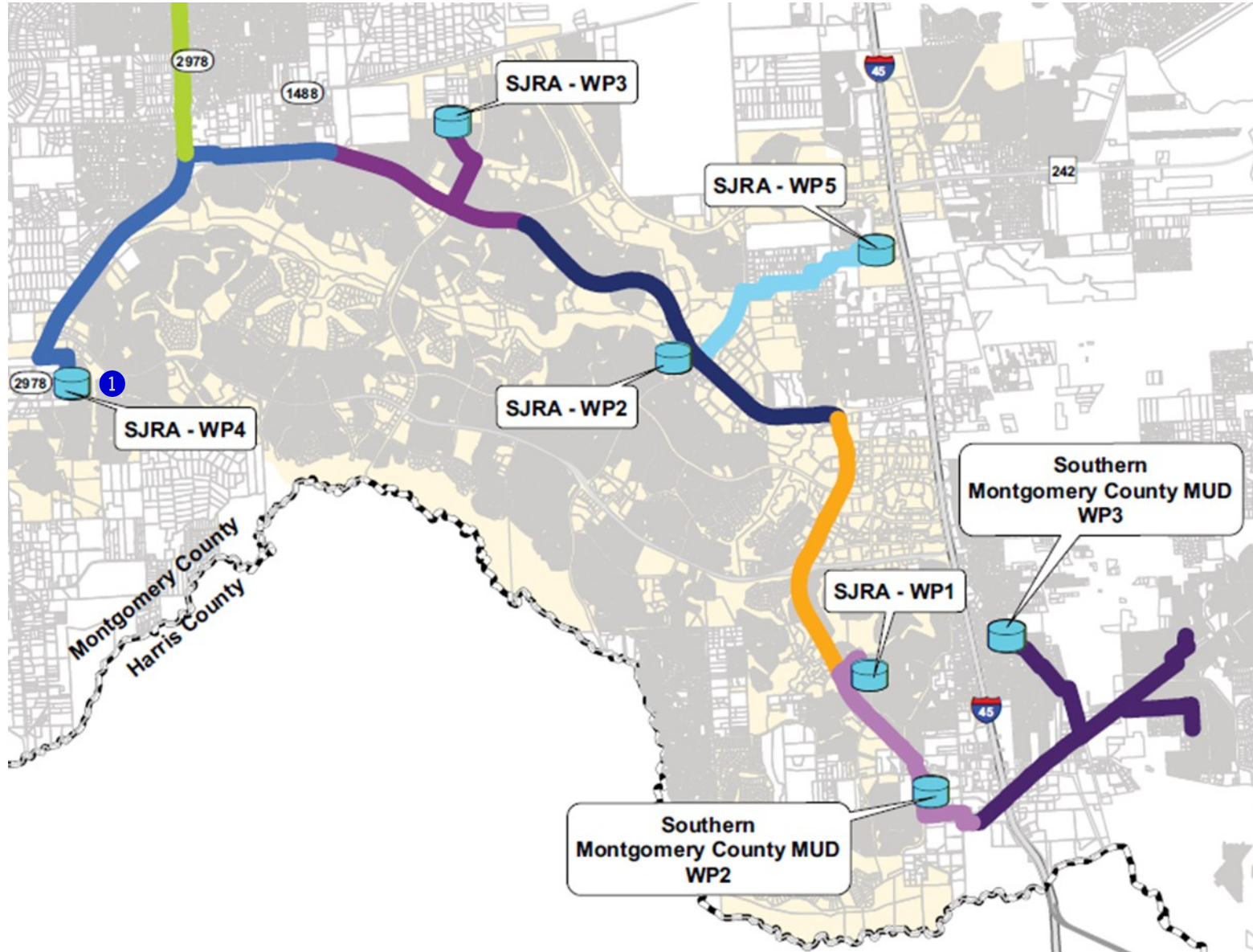


EXHIBIT 11 (con't) Surface Transmission System Line Construction Photos



① *Surface Water Receiving Facility – South —20-inch ground storage tank connection at SJRA Water Plant No. 4*

EXHIBIT 12 Surface Water Standpipe Construction Photos

Surface Water Standpipe

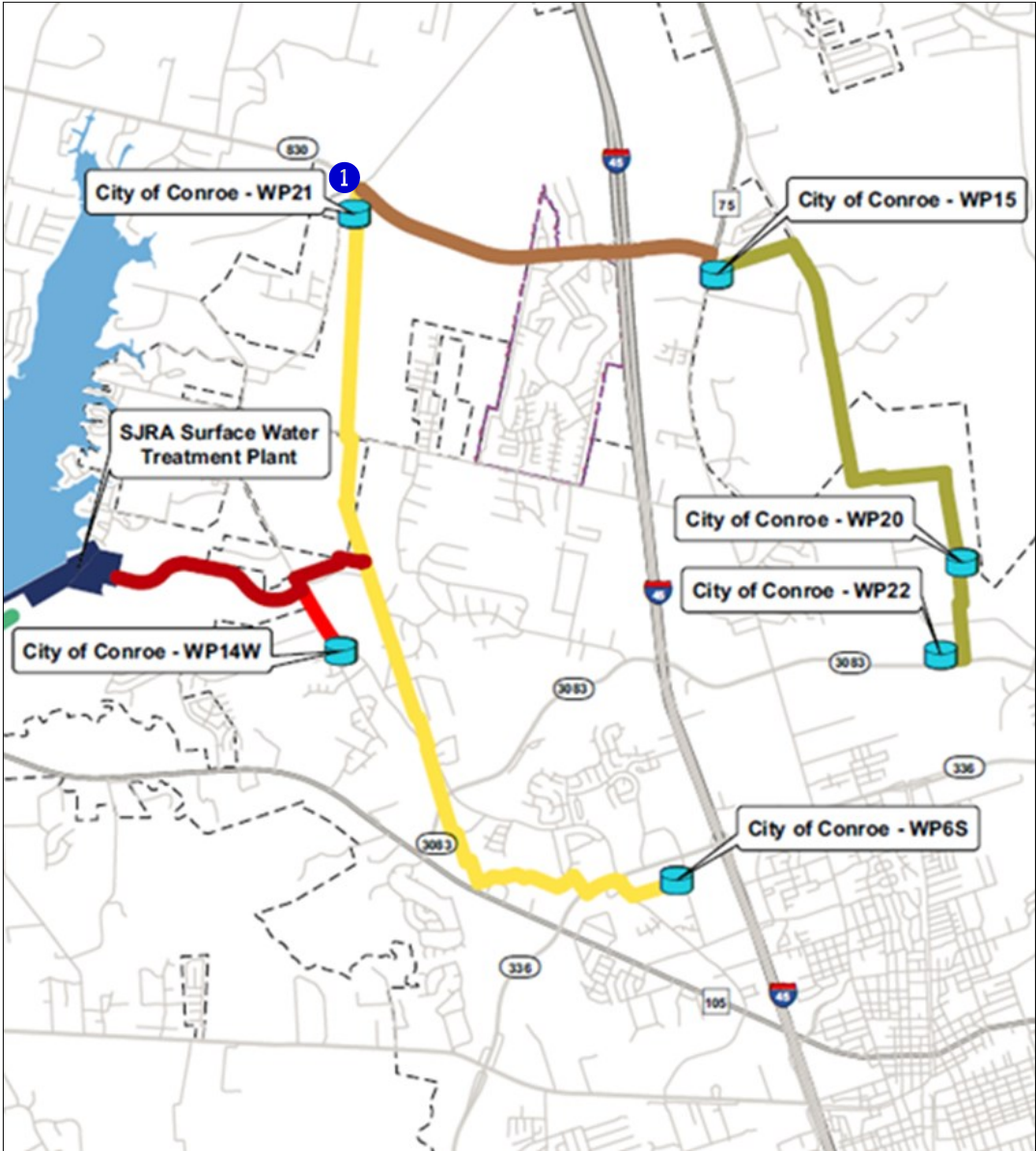


EXHIBIT 12 (con't) Surface Water Standpipe Construction Photos



① *Surface Water Standpipe—Equipment mobilization and delivery of construction materials*