



GROUNDWATER REDUCTION PLAN PROGRAM

MONTHLY PROGRESS REPORT - SEPTEMBER 2014

TABLE OF CONTENTS

Table of Contents	1	4.0 Cost Report and Financial Considerations	12
Acronyms and Definitions	2	4.1 GRP Program and GRP Project CIP Budget(s)	12
1.0 Planning	3	4.2 Financial Reports	12
1.1 Strategic	3	4.3 Invoices/Applications for Payment	12
1.2 Engineering and Construction	3	4.4 Contract Amendments and Change Orders	13
1.3 Meetings	3	4.5 Claims	13
2.0 Project Activities	4	4.6 CIP Cash Flow	13
2.1 Engineering	4	4.7 CIP Budget Estimates at Completion	13
2.2 State Agency Coordination	4	4.7.1 GRP Program	13
2.3 Surface Water Transmission System Project Data	5	4.7.2 GRP Projects	13
2.4 Surface Water Transmission System Construction Progress	8	4.8 Land Acquisition	13
2.5 Surface Water Facility Construction Progress and Project Data	10	5.0 Quality Assurance	14
3.0 Procurement	11	5.1 Final Design	14
3.1 Solicitations	11	5.2 Pre-Construction	14
3.2 Contract Awards	11	5.3 Construction	14
3.3 Process and Procedures	11	6.0 Exhibits	15
3.4 Look Ahead	11	7.0 GRP Program Extensions	72
		7.1 Engineering	72



ACRONYMS AND DEFINITIONS

ACRONYMS

CA&I	Construction Administration and Inspection
CCT	Construction Communication Team
CIP	Capital Improvement Project
CM&I	Construction Management and Inspection
CMAR	Construction Manager At Risk
CMT	Construction Materials Testing
CSB / P	Competitive Sealed Bid / Proposal
EA	Environmental Assessment
EAC	Estimate At Completion
FONCS	Fiber Optics Network Communication System
GIS	Geographic Information System
GRP	Groundwater Reduction Plan
GST	Groundwater Storage Tank
HSPS	High Speed Pump Station
LSGCD	Lone Star Groundwater Conservation District
LVGU	Large Volume Groundwater User
NTP	Notice To Proceed
PER	Preliminary Engineering Report
PMP	Program Management Plan
PVC	Polyvinyl Chloride
PSA	Professional Services Agreement
QA	Quality Assurance
RCCP	Reinforced Concrete Cylinder Pipe
RFB / Q / P	Request For Bids / Qualifications / Proposals
RWI / RWPS	Raw Water Intake / Raw Water Pump Station
SJRA	San Jacinto River Authority
SOQ	Statement of Qualifications
SWF	Surface Water Facilities (SWTP, HSPH and RWI)
SWRF	Surface Water Receiving Facilities
SWTP	Surface Water Treatment Plant
TCEQ	Texas Commission on Environmental Quality

DEFINITIONS

TWDB	Texas Water Development Board
TXDOT	Texas Department of Transportation
WIF	Water Infrastructure Fund
GROUNDWATER REDUCTION PLAN (GRP)	The document developed and filed with the LSGCD indicating SJRA's plan to reduce the permitted 2009 groundwater pumpage of its GRP Participants by 30%. The GRP is administered by the SJRA, including any supplements, revisions, or amendments.
GRP PROGRAM TEAM	SJRA staff, Program Management Consultant (Brown & Gay Engineers, Inc.) staff, and technical consultants working interdependently toward meeting the goals of the Groundwater Reduction Plan.
GRP ADMINISTRATOR	The SJRA General Manager's designee who administers the SJRA Groundwater Reduction Plan and GRP Contract with GRP Participants.
GRP CONTRACT	Contract between the SJRA and a Participant to be included in the SJRA's efforts to meet the surface water conversion requirements mandated by the LSGCD.
GRP EXTENSION PROJECTS	Safe harbor related projects not related to Phase 1, but tracked independently of Phase 1.
JOINT GRP	GRP which is prepared to include (takes into account) LVGUs who have executed a GRP Contract with the SJRA to join the SJRA's GRP. Contracted LVGUs obtain LSGCD groundwater reduction regulation compliance through the SJRA's Joint GRP without preparing and submitting a GRP.
LARGE VOLUME GROUNDWATER USER(S) (LVGU)	Any person or entity that, through a single well or a combination of wells, actually produces or is authorized by permit(s) issued by the LSGCD to produce 10 million gallons or more of groundwater annually on or after January 1, 2008.
PARTICIPANT(S)	Regulated User(s) that enters into and remains subject to a written agreement with the SJRA to be included in the SJRA's GRP and includes the legal successors or assigns of Participant(s).
REGULATED USER(S)	Any public or private entity or person that is or becomes subject to the District Regulatory Plan established by the LSGCD and includes any amendments, revisions or supplements thereto as may be adopted by the LSGCD.
SJRA GRP DIVISION	Division of the SJRA responsible for GRP compliance, and the management, administration, operation and maintenance of the surface water facilities and surface water transmission system.



1.0 PLANNING

The GRP Program Team meets regularly for the purposes of setting performance expectations and goals of the GRP Program, identifying the efforts required to achieve these objectives, evaluating the effectiveness of such efforts, and modifying those efforts based upon both internal and external performance evaluations.

1.1 STRATEGIC

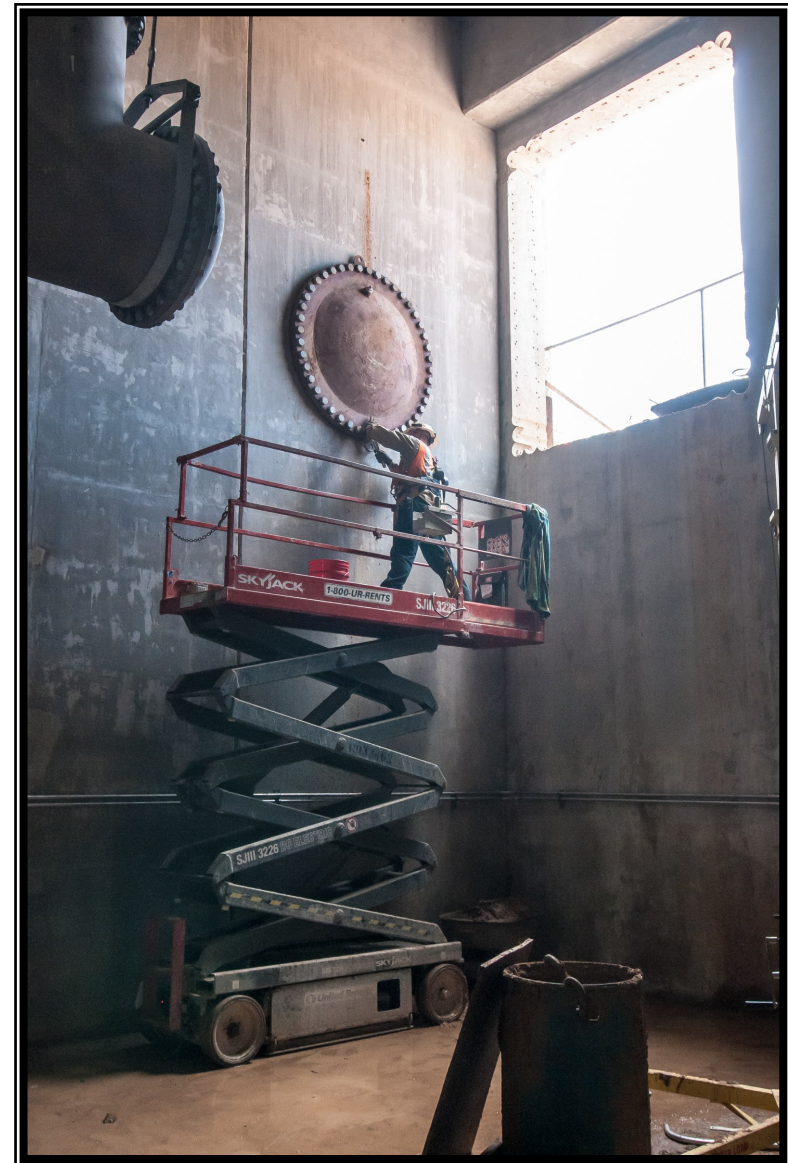
Discussions in the month of September revolved around two key topics, including site restoration along the transmission lines and remaining financial resources. Restoration discussions have focused on tactics that the SJRA can utilize to better overcome the erosion that is preventing efforts to re-establish grass. The second topic for strategy discussions has been the remaining financial resources available to the GRP Program.

1.2 ENGINEERING AND CONSTRUCTION

All procurement services for construction proposals for Phase I, with the exception of the permanent access road and Segment W3D, have been completed and fifteen transmission line construction contracts have been awarded. The engineering consultants will continue to provide construction phase services by reviewing submittals and requests for information as work proceeds.

1.3 MEETINGS

Various meetings continued this month with the GRP Program Team. A listing of these meetings is attached as [Exhibit 9](#).



Downstairs view in pipe gallery in the Granular Activated Carbon (GAC) Building

2.0 PROJECT ACTIVITIES

Currently, the GRP Program remains on schedule for the delivery of treated surface water to select Joint GRP Participants on or before January 1, 2016. A simplified GRP Program schedule can be found in attached **Exhibit 1**.

2.1 ENGINEERING

SURFACE WATER TRANSMISSION SYSTEM

Segments T1, T2, T3, W1A, W1B, W2A, W2B, W3A, W3B, W4, C1A, C1B, C2, C3, C4, Surface Water Receiving Facilities—North, Surface Water Receiving Facilities—South, Standpipe, and Fiber Optic Communications System – Design is complete. Engineering consultant is providing construction phase services.

Segment W3D - Segment W3D includes approximately 6,200 linear feet of 16-inch and 12-inch waterline and 3-inch fiber optic conduit along Maplewood Drive and Robinson Road between Southern Montgomery County MUD Plant No. 3 and the City of Oak Ridge North Plant. 100% design was completed. Anticipated is advertising in October and awarding of the construction contract in December.

Construction Management and Inspection (CM&I) – The CM&I consultant provided management and inspection services for Transmission Segments T1, T2, T3, W1A, W1B, W2A, W2B, W3A, W3B, W4, C1A, C1B, C2, C3, C4, WRF-N, WRF-S, and the Standpipe.

Construction Materials Testing Consultant (CMT) - CMT consultant is currently working with CM&I staff to perform industry standard construction materials testing. Testing includes subgrade and backfill soil densities, compressive strengths, masonry, and coatings.

SURFACE WATER FACILITIES

Raw Water Intake Pump Station – Design is complete. Engineering consultant is providing construction phase services.

Surface Water Treatment Plant – Design is complete. Engineering consultant is providing construction phase services.

High Service Pump Station and Ground Storage Tanks – Design is complete. Engineering consultant is providing construction phase services.

Permanent Access Road - 60% design review was completed and comments were provided to the consultant in August. Anticipate 90% submittal in October.

Construction Administration and Inspection (CA&I) – The CA&I consultant for the SWF is currently working with the CMAR and SJRA staff to review submittals and RFI's, and provide constant field monitoring and inspection of the systems being installed.

Construction Materials Testing Consultant (CMT) - The CMT consultant for the SWF is currently working with the CMAR and CA&I staff to perform industry standard construction materials testing. Testing includes soil densities, compressive strength/properties of concrete placed; and welding, coatings, and masonry testing.

Cathodic Protection - The cathodic protection consultant has completed their design effort for both the transmission line segments and the Surface Water Facilities and is providing construction phase services.

2.2 STATE AGENCY COORDINATION

The Texas Water Development Board (TWDB) completed the field inspection of the Surface Water Facilities construction site on September 29, 2014. The TWDB visited the various transmission line segments, receiving facilities, and standpipe construction sites on September 15, 16, and 30, 2014. The next TWDB site inspection visits are tentatively scheduled for October 29, 2014. SJRA forwarded plans and specifications of Segment W3D to TWDB for review and approval.



Crane utilized for placement of plate settlers at the Pretreatment Facilities

2.0 PROJECT ACTIVITIES (CONTINUED)

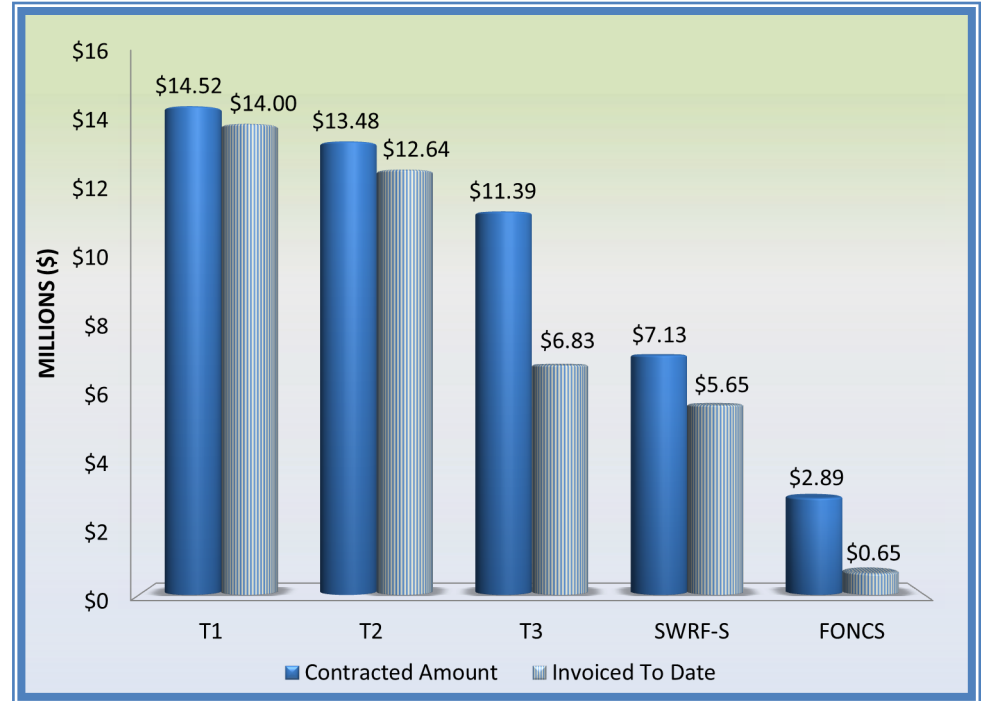
2.3 SURFACE WATER TRANSMISSION SYSTEM PROJECT DATA

The month of September concluded with the installation of approximately 231,287 feet or 43.8 miles of various sized concrete coated steel pipe, PVC pipe, and bar wrapped concrete mortar pipe along the majority of the transmission line segments. This represents approximately 85% of the total planned pipe to be installed throughout Montgomery County by or before January 1, 2016. The following graphs and charts show the progress of Transmission Line Segments T1, T2, T3, W1A, W1B, W2A, W2B, W3A, W3B, W4, C1A, C1B, C2, C3, C4, Surface Water Transmission North Water Receiving Facilities (SWRF-N), Surface Water Transmission South Water Receiving Facilities (SWRF-S), Standpipe and Fiber Optics Network Communication System (FONCS) thus far.

Plate settlers to be installed at the Pretreatment Facility



Surface Water Transmission System Total Progress To Date	
Total Contracted Amount	\$149,001,350.29
Total Invoiced To Date	\$118,396,212.55
Total % Complete Based on Invoice Amount	79%



Segment	T1	T2	T3	SWRF-S	FONCS
Contracted Amount	\$14,521,937.14	\$13,475,718.33	\$11,393,193.97	\$7,127,383.00	\$2,885,432.35
Invoiced To Date	\$13,997,980.28	\$12,637,847.23	\$6,834,915.47	\$5,646,564.45	\$650,426.00
% Complete	96%	94%	60%	79%	23%



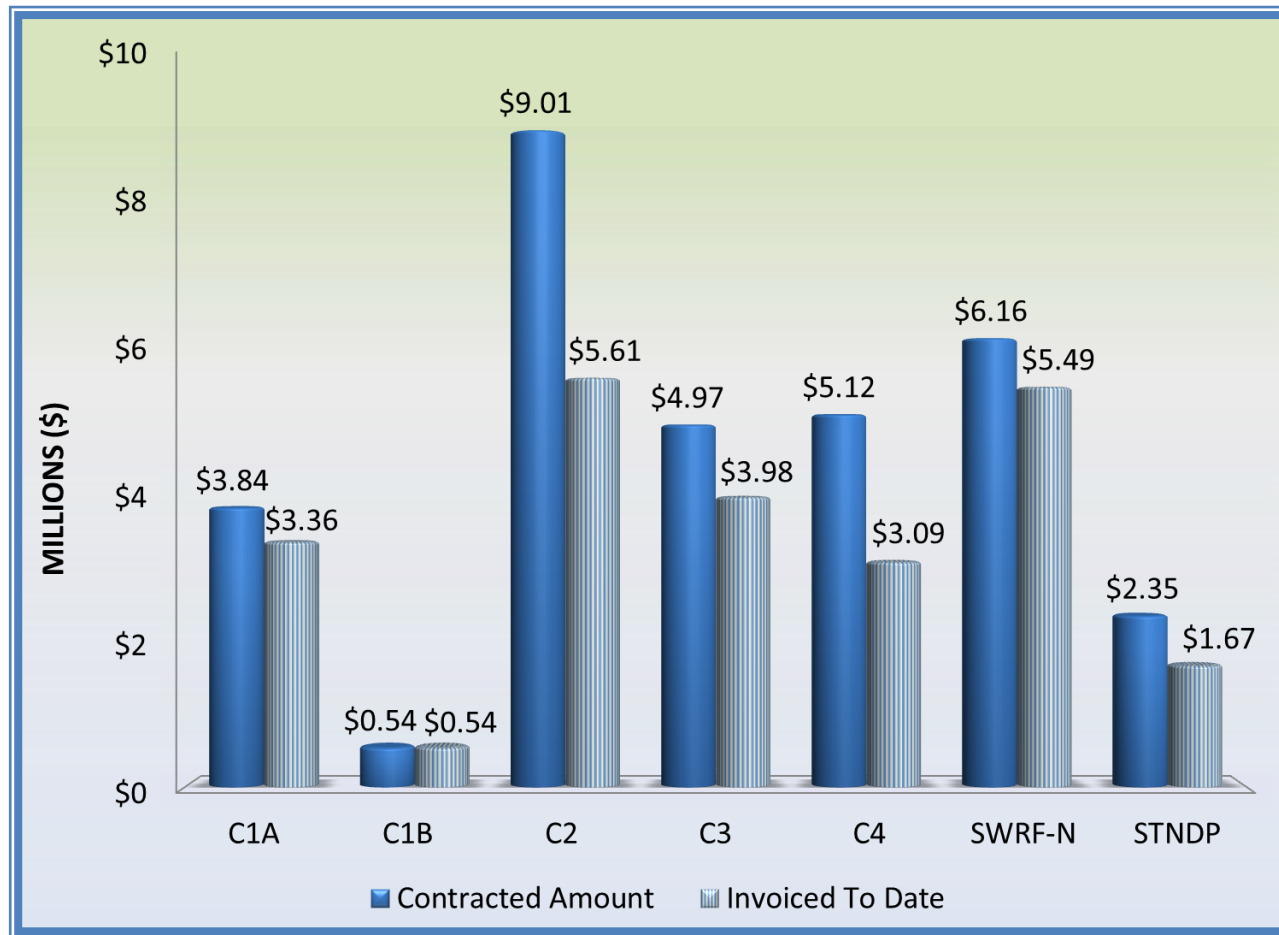
2.0 PROJECT ACTIVITIES (CONTINUED)



Segment	W1A	W1B	W2A	W2B	W3A	W3B	W4
Contracted Amount	\$8,222,000.50	\$7,213,544.50	\$16,340,258.02	\$16,161,600.00	\$7,880,207.50	\$8,124,485.50	\$3,656,604.23
Invoiced To Date	\$7,313,062.46	\$6,589,547.48	\$13,738,487.97	\$14,421,415.19	\$5,207,572.25	\$4,435,126.57	\$3,170,281.77
% Complete	89%	91%	84%	89%	66%	55%	87%



2.0 PROJECT ACTIVITIES (CONTINUED)



Segment	C1A	C1B	C2	C3	C4	SWRF-N	STANDPIPE
Contracted Amount	\$3,837,683.40	\$544,393.60	\$9,014,837.00	\$4,972,314.80	\$5,115,396.90	\$6,160,184.55	\$2,354,175.00
Invoiced To Date	\$3,364,811.79	\$544,939.60	\$5,614,598.52	\$3,979,950.45	\$3,088,989.65	\$5,491,301.11	\$1,668,940.31
% Complete	88%	100%	62%	80%	60%	89%	71%

2.0 PROJECT ACTIVITIES (CONTINUED)

2.4 SURFACE WATER TRANSMISSION SYSTEM CONSTRUCTION PROGRESS

Significant progress continues to be made each month with regard to pipe installation on each of the fifteen Surface Water Transmission Line Segments. The chart below represents the overall pipe installation statistics through the month of September.

Transmission Line System Pipe Installation Statistics to Date	
Total Piping Installed to Date	43.8 miles
Total % of Pipe Installed to Date	85%

Segment T1 - Contractor completed the hydrostatic pressure testing of the 60-inch concrete coated steel pipe and began the disinfection process. Site restoration continued within the SJRA Campus, along McCaleb Road and at the Highlands Ranch Subdivision entrance. 100% of pipe installation totaling 20,514 feet of 60-inch concrete coated steel pipe was installed and completed in May. (See Exhibit 11, Page 41)

Segment T2 - Contractor continues site and pavement restoration and hydrostatic pressure testing the 54-inch concrete coated steel pipe along Fish Creek Thoroughfare. Contractor began testing fiber optic conduit and ground boxes. 100% of pipe installation totaling 23,475 feet of 60-inch and 54-inch concrete coated steel pipe was installed and completed in May. (See Exhibit 11, Page 42)

Segment T3 - Contractor continued tunneling operations and open-cut installation of 54-inch concrete coated steel pipe and 54-inch steel pipe along FM 2978, FM 1488, and Sendera Ranch. Approximately 13,592 feet of 54-inch concrete coated steel pipe along Fish Creek Thoroughfare and FM 2978 has been installed through this month. (See Exhibit 11, Page 43)

Segment W1A - Contractor continues hydrostatic testing and site restoration consisting of sodding, asphalt shoulder repair and pavement restoration along Research Forest Drive. Contractor completed fiber optic conduit testing along FM 2978 and Research Forest Drive. 100% of pipe installation totaling 23,064 feet of 54-inch steel pipe, 48-inch concrete coated steel and 16-inch PVC pipe was installed and completed in July. (See Exhibit 11, Page 45)

Segment W1B - Contractor continued site restoration along Research Forest Drive, hydrostatic pressure testing of waterline segment, and testing of fiber optic conduit. Approximately 17,140 feet of 48-inch and 42-inch concrete coated steel pipe and 20-inch and 16-inch PVC pipe has been installed through this month. (See Exhibit 11, Page 46)

Segment W2A - Contractor continued site restoration on asphalt shoulders and road side ditches along Research Forest Drive in the area near The Woodlands High School. Tunneling operations were completed at Lake Woodlands near the CBI Campus and under the CBI Campus entrance. Contractor began open-cut installation of 30-inch PVC pipe between CBI Campus and Grogans Mill Road. Approximately 19,504 feet of 30-inch and 20-inch PVC pipe and 42-inch concrete coated steel pipe was installed through this month. (See Exhibit 11, Page 47)

Segment W2B - Contractor continued removing shoring and backfilling the borepits at the Waterway and to make the waterline connection on the south side. Contractor continued testing the fiber optic conduit and ground boxes. Approximately 13,783 feet of 30-inch PVC pipe has been installed through this month. (See Exhibit 11, Page 49)

Segment W3A - Contractor completed trenchless and open-cut installation of 24-inch and 20-inch PVC pipe along Grogans Mill from South Millbend to South Park Drive. Contractor began 24-inch PVC pipe trenchless installation along South Millbend to SJRA WP No. 1. Approximately 10,500 feet of 24-inch, 20-inch, and 12-inch PVC pipe has been installed through this month. (See Exhibit 11, Page 51).

Segment W3B - Contractor continued trenchless installation of 18-inch, 16-inch, and 12-inch PVC pipe along the Kinder Morgan easement and adjacent to the Union Pacific Railroad. Contractor completed tunnel crossing under Hanna Road. Approximately 11,638 feet of 20-inch, 18-inch, 16-inch, and 12-inch PVC pipe has been installed through this month. (See Exhibit 11, Page 53)



2.0 PROJECT ACTIVITIES (CONTINUED)

Segment W4 - Contractor continued hydrostatic and fiber optic conduit testing and site restoration along Gosling Road and Shadowbend. Approximately 13,103 feet of 24-inch and 20-inch PVC pipe has been installed through this month. (See Exhibit 11, Page 55)

Segment C1A - Contractor completed installing valves, appurtenances, and site grading along GRP Access Road. 100% of pipe installation totaling 10,272 feet of 42-inch bar wrapped concrete mortar pipe was completed in August. (See Exhibit 11, Page 56)

Segment C1B - Contractor completed the Substantial Completion Punch List items. Contractor received Certificate of Final Completion on July 9th. 100% pipe installation totaling 2,455 feet of 16-inch PVC pipe was completed in February. (See Exhibit 11, Page 57)

Segment C2 - Contractor continued installation of 36-inch bar wrapped concrete mortar pipe valves, and appurtenances along Entergy easement and continued trenchless installation across League Line Road. Approximately 20,028 feet of 36-inch bar wrapped concrete mortar pipe, 30-inch concrete coated steel pipe, and 16-inch and 12-inch PVC pipe has been installed through this month. (See Exhibit 11, Page 58)

Segment C3 - Contractor continued open-cut installation of 20-inch PVC pipe on Girl Scouts property and adjacent to UPRR property. Fiber optic conduit installation was completed along Pollock Drive, Tom Stinson Drive, and FM 3083. Approximately 21,430 feet of 20-inch and 16-inch PVC pipe has been installed through this month. (See Exhibit 11, Page 60)

Segment C4 - Contractor continued trenchless and open-cut installation of 24-inch PVC pipe along FM 830 and completed installation of 24-inch PVC pipe for the I-45 tunnel crossing. Contractor completed tunnel crossing at Steward Creek. Approximately 10,789 feet of 24-inch and 20-inch PVC pipe has been installed through this month. (See Exhibit 11, Page 62)

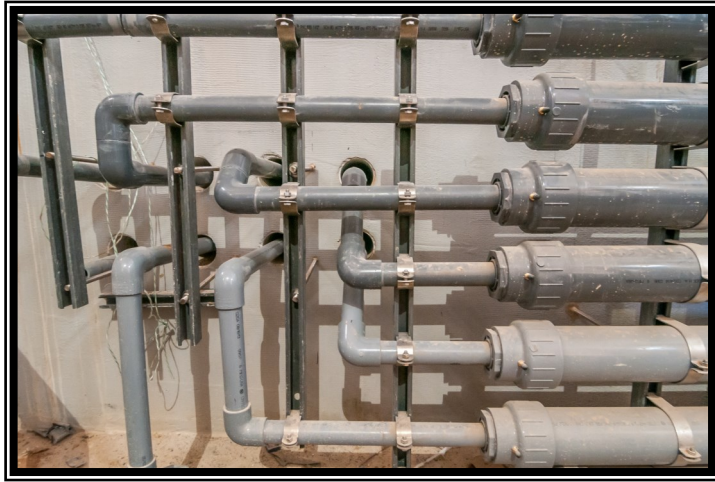
Standpipe - Contractor completed installing the Standpipe tank panels and related appurtenances. Standpipe construction is approximately 66% complete. (See Exhibit 12, Page 68)

Fiber Optic Communications System - Contractor completed the fiber optic cable installation from GRP Building No. 1 to G&A Building. Contractor continues coordination efforts with water transmission contractors. Fiber Optic Communications System construction is approximately 23% complete. (See Exhibit 13, Page 70).



Chemical tanks at the Membrane Building

2.0 PROJECT ACTIVITIES (CONTINUED)



Sample testing lines at the Membrane Building

SURFACE WATER RECEIVING FACILITIES

Surface Water Receiving Facilities—North - Contractor completed pulling wiring and terminating equipment and continued site restoration. Site acceptance testing for equipment was performed at all North Water Receiving Facilities. (See Exhibit 11, Page 64)

Surface Water Receiving Facilities—South - Contractor began installation of underground mechanical, electrical, plumbing (MEP) and flow control pressure station (FCPS) slab at Southern Montgomery (SMC) MUD No. 3. Contractor began preparation to install the backup generator slab for SMC MUD No. 3, SJRA Water Plant No. 1, and SJRA Water Plant No. 2. (See Exhibit 11, Page 66)

2.5 SURFACE WATER FACILITY CONSTRUCTION PROGRESS AND PROJECT DATA

Raw Water Intake - Contractor continued coating raw water discharge pipes along the bridge and installation of the metal roofing. Contractor continued to install power, lighting, instruments support, and conduit at the pump and mechanical rooms. Contractor continued to install 480V switchboard in the Electrical Room and completed the raw water pump variable

frequency devices and related appurtenances. Various electrical equipment continues to be field tested.

Surface Water Treatment Plant - Construction activities continue at the Operations, Chemical, Power Supply, Generator, Pretreatment, Membrane, Backwash Equalization, Process Water Recovery Basin, Belt Filter Press Building, Blower Building, and GAC facilities. Electrical power, data, and lighting conduit installation continues at the structures. Coatings, roofing, and masonry activities are still occurring on the site this month. Testing and commissioning the electrical and mechanical equipment continues at various facilities. Preliminary walk-through inspections were performed at the Power Supply Building and permanent power was energized. Process piping and valve installation continues at the GAC. Membrane pumps, process piping, HVAC, and coatings continues at the Membrane Building. Painting, flooring system, millwork, and various electrical fixtures continue to be installed at the Operations Building.

High Service Pump Station - Contractor continues installation of suction and discharge piping, supports, electrical conduit and cable support, electrical equipment, HVAC, plumbing, and coatings. Contractor began ceiling, exterior fixtures, handrails, and the stair system.

Ground Storage Tanks - No major activities occurred at the Ground Storage Tanks this month.

Site Work - Large diameter yard piping, potable water piping, sanitary sewer, manholes, junction boxes, and drain line installation continue to progress. Electrical duct bank testing continues, and Contractor began pulling medium and high voltage to various facilities. Contractor continues the installation of the 60-inch raw water pipe along the back side of the dam.

The chart below represents Surface Water Facilities progress through the month of September.

Name of Project	Contracted Amount	Invoiced To Date	% Complete Based on Invoice
Surface Water	\$190,704,740	\$146,466,565.00	77%

3.0 PROCUREMENT

3.1 SOLICITATIONS

The following advertisements for solicitations occurred this month:

- RFP 14-049 Segment W3D 12-inch and 16-inch Water Line

3.2 CONTRACTS/AGREEMENTS/WORK ORDER APPROVALS

No contracts, agreements, or work orders were presented this month.

3.3 PROCESS AND PROCEDURES

The GRP Program will utilize traditional procurement methods for consultant services and alternative project delivery methods in the procurement of contractor services, if those services are required.

3.4 LOOK AHEAD

The following list provides a very general look ahead at known and anticipated GRP Program professional services and construction contractor solicitations, contract awards, agreements, and/or contract/work order amendments. Solicitations may be combined, modified, or canceled, or time frames may be modified as deemed necessary.

- Contract for Construction of Transmission Line Segment W3D
- Work Order No. 11 for Construction Phase Services during construction of Transmission Line Segment W3D
- Work Order No. 4 for Construction Materials Testing during construction of Transmission Line Segment W3D
- Supplemental Agreement to GRP Contract with City of Conroe



Fiberglass electrical conduit at the Chemical Building

4.0 COST REPORT AND FINANCIAL CONSIDERATIONS

4.1 GRP PROGRAM AND GRP PROJECT CIP BUDGET(S)

Through this month the GRP Program remains under its construction cost estimate of \$500,000,000 and forecasts continue to indicate it will be completed under budget (see also subsection 4.6 and [Exhibit 2](#)). A summary of the GRP Program's CIP budget and cost considerations as reported to the GRP Review Committee and the SJRA Board of Directors is provided as attached [Exhibit 2](#).

Due to last month's year-end processes, Exhibit 8 for the month of August was not included, however [Exhibit 8-1](#) now reflects August's summary of the SJRA GRP Division's Fiscal Year 2014 unaudited operating budget (revenue and expenditures). Also included in the exhibit is a summary of the SJRA GRP Division's Fiscal Year 2015 operating budget marked as [Exhibit 8-2](#). The budget includes all normal and customary expenses for operating a utility-based, non-profit business, including debt service, and is developed annually for approval by the SJRA Board of Directors.

The SJRA Board of Directors has authorized bond funding for the GRP Program in the amount of \$552,250,358.49 (Net \$479,743,492.79); see also [Exhibit 4](#). This funding allows the SJRA to secure all of the resources required to perform professional services, construction services, and procure long lead time equipment during the design phase of the GRP Program.

4.2 FINANCIAL REPORTS

[Exhibit 5](#) illustrates the funding sources presently applied towards the GRP Program CIP budget.

- 1.) TWDB Water Infrastructure Fund (WIF)
- 2.) The sale of open market Special Project Revenue Bonds, Series 2011
- 3.) TWDB Dfund, Series 2011A
- 4.) TWDB Dfund, Series 2012
- 5.) TWDB Dfund, Series 2012A
- 6.) TWDB Dfund, Series 2013
- 7.) Operating Cash

Contracted commitments are summarized in Table 4.1 for the month of September. The GRP Program's funding and forecasted expenditures are further detailed in attached [Exhibits 2, 3 and 4](#).

Please note that financial reports do not include investment income.

4.3 INVOICES/APPLICATIONS FOR PAYMENT

The table below represents the GRP Program Consultant Invoices and/or Construction Contractor Applications for Payment paid through the end of the report month (Item F).

	Previous 8/31/2014	September 2014 Activity	Year to Date (Thru 9/30/14)
A. Approved Funding	552,637,738.07	-	552,637,738.07
B. Available Funding After Costs	480,133,401.45	-	480,133,401.45
C. Approved Contracts			
Phase I	465,230,311.22	(20,113.55)	465,210,197.67
Extensions	772,269.00	-	772,269.00
D. Project Close Out			
Phase I	(1,456,106.64)	-	(1,456,106.64)
Extensions	-	-	-
E. Uncontracted Funding	15,586,927.87	20,113.55	15,607,041.42
F. Invoices Paid *			
Phase I	324,617,024.65	14,213,933.84	338,830,958.49
Extensions	172,033.34	-	172,033.34
G. Remaining Funds **	155,344,343.46	(14,213,933.84)	141,130,409.62

*Invoices Paid -Figures reflect actual funds paid out as of period end dates noted.

**Remaining Funds-Excludes net investment income



4.0 COST REPORT AND FINANCIAL CONSIDERATIONS (CONTINUED)

4.4 CONTRACT AMENDMENTS AND CHANGE ORDERS

Each of the GRP Program contracts, agreements and work orders listed in Section 3.2 were presented at the GRP Review Committee and the SJRA Board of Directors meetings in September. The following items were authorized by the SJRA Board of Directors for execution by the SJRA General Manager.

- No contract amendments or change orders were presented to the SJRA Board of Directors this month

4.5 CLAIMS

If and when claims are received, they will be addressed by the GRP Program Team. SJRA reserves the right to withhold certain claims information that is subject to ongoing investigation, pending or threatened litigation, or covered by attorney-client privilege.

4.6 CIP CASH FLOW

The GRP Program CIP cash flow through calendar year 2015 reflects known expenditures through this month as seen in Table 4.1. Estimates for future expenditures are included in Exhibit 2. All active and currently identified future GRP Program projects and initiatives are included in the cash flow. A graph of forecasted monthly expenditures from the referenced cash flow is attached as Exhibit 3.

4.7 CIP BUDGET ESTIMATES AT COMPLETION

4.7.1 GRP Program

The **total gross funds** (including capitalized interest) required to execute Phase I of the GRP Program are currently estimated at \$564,335,358.49. Additionally, all current GRP Program contracts, including their respective SJRA Board of Director's approved budgeted amounts are listed in Exhibit 6.

4.7.2 GRP Projects

The GRP Program projects remained within their approved contract budgets this month. Exhibit 6 indicates each active GRP Program project and GRP Program contract.

4.8 LAND ACQUISITION

The GRP Program Team, with the support of its various land acquisition consultants, are in the final stages of acquiring land and easements necessary for the surface water transmission system. A total of fourteen easements involving two property owners still remain to be finalized. Negotiations to acquire the remaining easements are at or near final stages of completion. A cumulative summary of easement acquisition activity is provided in Exhibit 7.



Fiberglass electrical conduit at the Chemical Building

5.0 QUALITY ASSURANCE

5.1 FINAL DESIGN

Final design is complete for Surface Water Treatment Plant, Transmission Lines, Standpipe, Fiber Optic Communications Network, and Water Receiving Facilities. Design of permanent access road is underway and the site landscaping will occur in the future.

5.2 PRE-CONSTRUCTION

There were no pre-construction meetings held this month.

5.3 CONSTRUCTION

Quality Assurance efforts by SJRA construction inspectors, as well as the CA&I consultant continued this month on the SWF project. Virtually every building on the SWF project site is progressing timely toward meeting the established SWF substantial completion date. Quality Assurance efforts include regular visits to the project site to monitor and document observed progress. Similar Quality Assurance efforts by SJRA construction inspectors and the CM&I consultant continued this month on the transmission lines.



*Left: Intake suction header installation at the High Service Pump Station
Above: Electrical gear installation at the High Service Pump Station
Bottom: Transmission line valves at the High Service Pump Station*



6.0 EXHIBITS

Exhibit 1—GRP Program Schedule

Exhibit 2—GRP Program Estimate-At-Completion

Exhibit 3—GRP Program Monthly Forecasted Expenditures

Exhibit 4—GRP Program Fund Data

Exhibit 5—Monthly GRP Program Funding Report

Exhibit 6—GRP Program Current Authorizations

Exhibit 7—Land Acquisition Summary

Exhibit 8—GRP Schedule of Revenues & Expenses—Actual & Budget

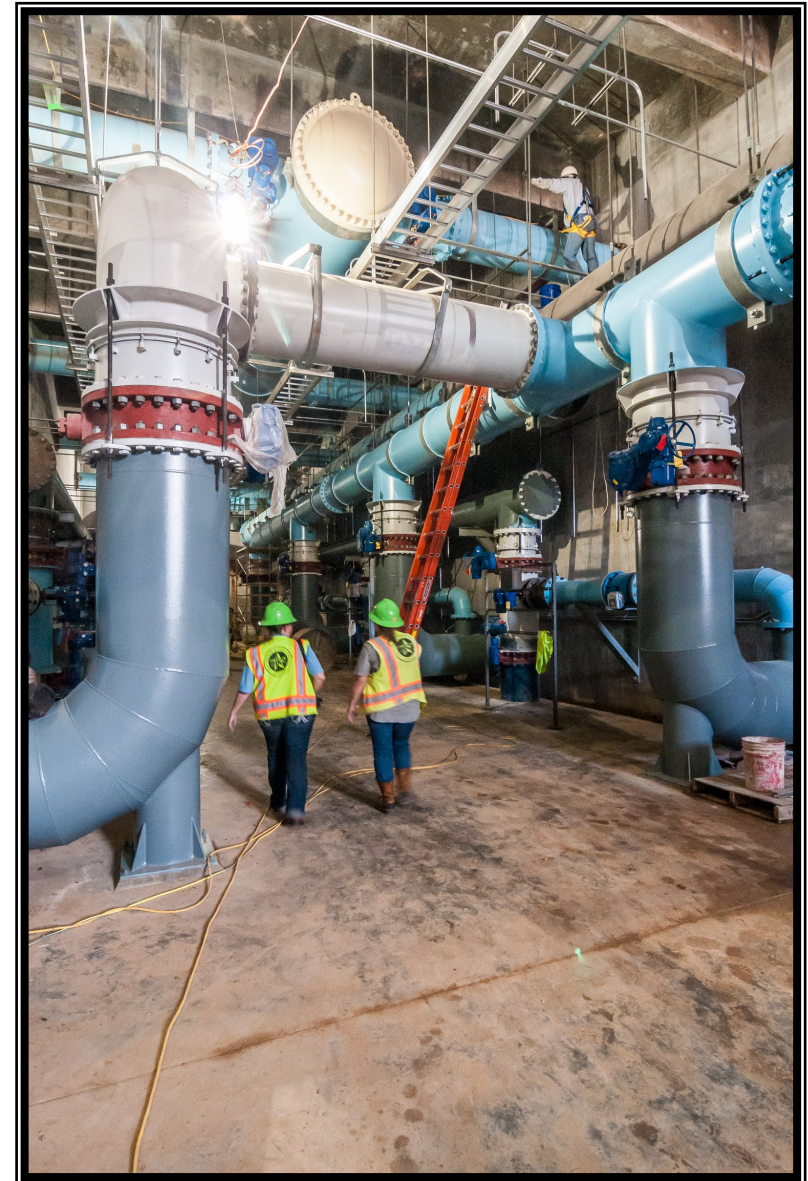
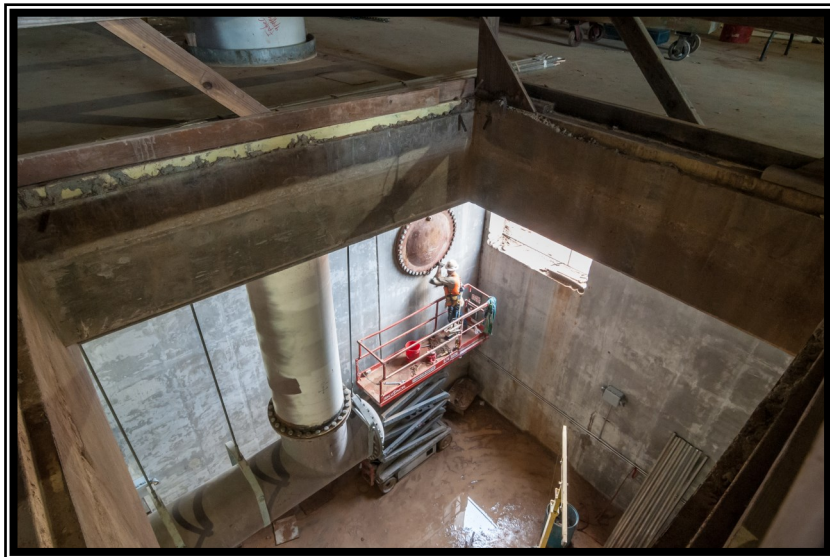
Exhibit 9—GRP Program Monthly Meeting Log

Exhibit 10—Surface Water Facilities (SWF) Construction Photos

Exhibit 11—Transmission Line System Construction Photos

Exhibit 12—Surface Water Standpipe Construction Photos

Exhibit 13—Fiber Optic Network Communication System



Left: Upstairs view down to Pipe Gallery at the GAC Building

Above: Pipe Gallery in the GAC Building

Exhibit 2

GRP Program Estimate-At-Completion as of September 30, 2014

SERVICES	ESTIMATE-AT-COMPLETION
Pre-Engineering Phase Services (GRP Development, Environmental Studies, Pilot Plant, Surface Water Treatment Plant Site Survey)	\$ 4,702,612
Engineering Phase Services (Planning, Preliminary Engineering, Final Engineering, Geotechnical, Survey, Metes & Bounds, Subsurface Utility Investigation, Environmental)	\$ 44,245,273
Construction Phase Services (Engineering Services During Construction, Construction Management & Inspection [Transmission System], Construction Administration & Inspection [SWF], Material Testing)	\$ 29,496,582
Construction (Surface Water Transmission System, Raw Water Intake and Pump Station, Surface Water Treatment Plant, High Service Pump Station and Ground Storage Tanks, Surface Water Receiving Facilities, Infrastructure, Buildings, Roadways, Site Security, Access Roadways)	\$ 387,610,109
Transmission Segment C1 - Construction	\$ 4,382,077
Transmission Segment C2 - Construction	\$ 9,015,577
Transmission Segment C3 - Construction	\$ 5,072,315
Transmission Segment C4 - Construction	\$ 5,115,397
Transmission Segment T1 - Construction	\$ 14,621,937
Transmission Segment T2 - Construction	\$ 13,475,718
Transmission Segment T3 - Construction	\$ 11,593,194
Transmission Segment W1 - Construction	\$ 15,435,545
Transmission Segment W2 - Construction	\$ 32,801,858
Transmission Segment W3 - Construction	\$ 16,339,693
Transmission Segment W4 - Construction	\$ 3,656,604
Transmission System Standpipe	\$ 2,354,175
Receiving Facilities - Construction	\$ 16,250,295
Surface Water Facilities CMAR (GMP)	\$ 190,704,740
Transmission System Fiber Optic - Construction	\$ 2,985,432
Permanent Access Roadway Construction	\$ 7,505,000
Building No. 1; Access Road; Vegetative Buffer; Construction Materials Testing; SWF Site Vegetation Management; Sanitary Sewer/Access Rd. Relocation	\$ 4,469,037
Other Offsite Construction (Transmission Line Utility Relocations, Receiving Facility Improvements)	\$ 28,671,734
Non-Project Specific Contingency	\$ 3,159,780
Program Management (GRP Program Management, Survey, Geotechnical, Transient, Corrosion, Legal Consultants)	\$ 10,968,374
Land Acquisition (Legal, Appraisal, Title Research, Land Acquisition Consultants) ⁽¹⁾	\$ 13,479,644
Total ⁽²⁾:	\$ 490,502,595

⁽¹⁾ Includes revisions to land acquisition cost estimates, land cost, and recategorizing of contingency.

⁽²⁾ Bond issuance costs are not included.



Exhibit 3

GRP Program Monthly Forecasted Expenditures as of September 30, 2014

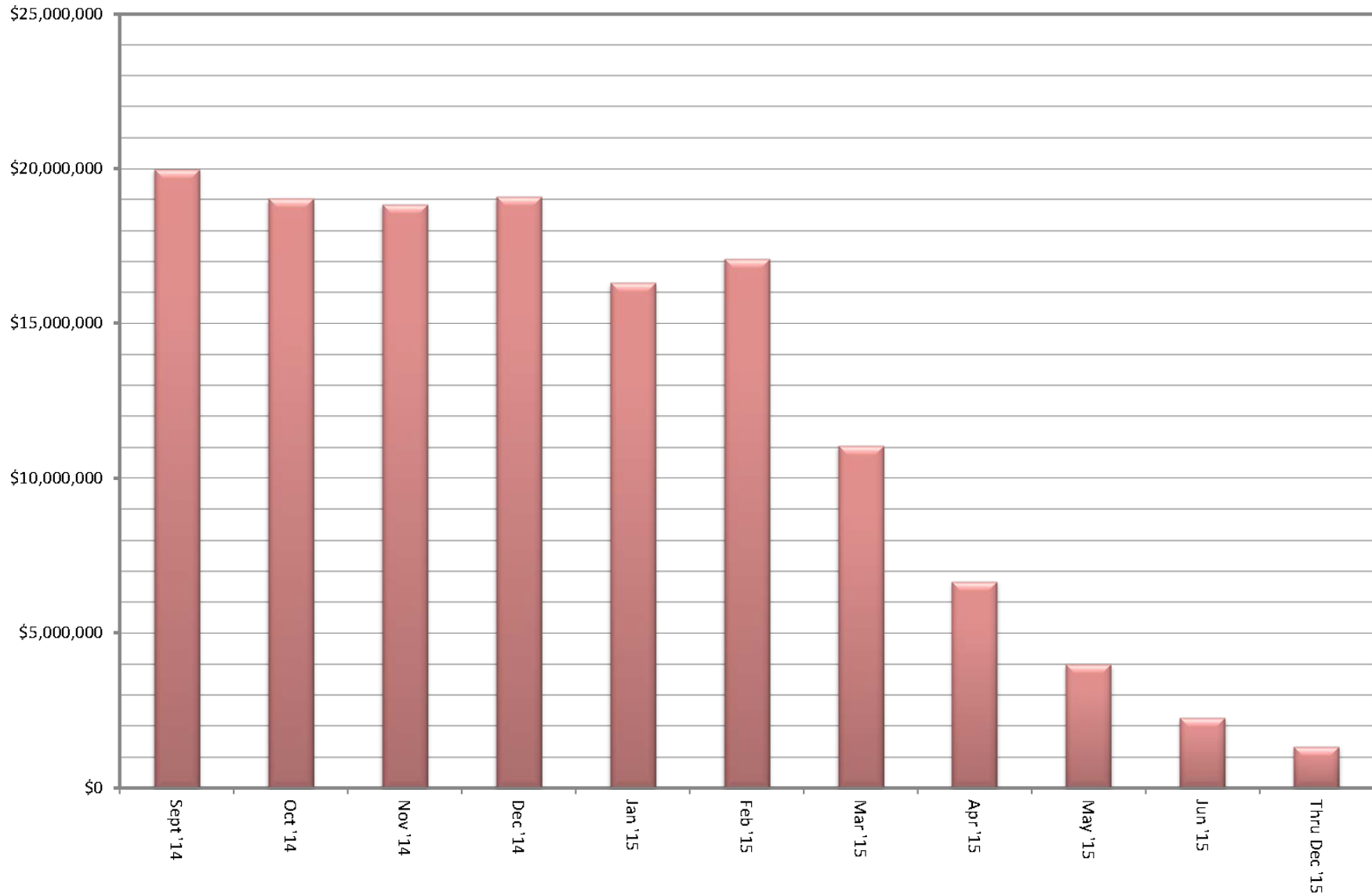


Exhibit 4

GRP Program Fund Data as of September 30, 2014

Funding Source	Amount Authorized by Board To-Date	Interest Rate	Bond Costs	Capitalized Interest	Debt Service Reserve Fund	Net Amount Currently Available	Pending Funding Source
TWDB WIF Bond Issue	\$ 21,500,000.00	.854% - 2.706%	\$ 470,337.08	\$ -	\$ -	\$ 21,029,662.92	
Open Market Bond Issue (Series 2011)	\$ 83,430,358.49	3% - 5.25%	\$ 2,049,764.39	\$ 7,858,241.52	\$ -	\$ 73,522,352.58	
TWDB DFund Series 2011A	\$ 67,470,000.00	1.22% - 4.97%	\$ 751,195.33	\$ 5,166,233.00	\$ 3,859,151.00	\$ 57,693,420.67	
TWDB DFund Series 2012	\$ 175,000,000.00	1.17% - 4.62%	\$ 971,769.13	\$ 12,869,175.00	\$ -	\$ 161,159,055.87	
TWDB DFund Series 2012A	\$ 165,000,000.00	1.26% - 4.62%	\$ 952,269.99	\$ 14,139,669.00	\$ 16,500,000.00	\$ 133,408,061.01	
TWDB Dfund Series 2013	\$ 39,850,000.00	4.50%	\$ 631,279.08	\$ 3,214,292.00	\$ 3,073,489.18	\$ 32,930,939.74	
Subtotal Approved Amounts	\$ 552,250,358.49		\$ 5,826,615.00	\$ 43,247,610.52	\$ 23,432,640.18	\$ 479,743,492.79	
Future Series 2015 (Est.)	\$ 12,085,000.00	4.54%	\$ 321,200.00	\$ 1,004,698.00	\$ -	\$ -	\$ 10,759,102.00
Subtotal Future Amounts	\$ 12,085,000.00		\$ 321,200.00	\$ 1,004,698.00	\$ -	\$ -	\$ 10,759,102.00
Totals	\$ 564,335,358.49		\$ 6,147,815.00	\$ 44,252,308.52	\$ 23,432,640.18	\$ 479,743,492.79	\$ 10,759,102.00

Notes:

1. These values do not include investment income.
2. Green items are estimates only.
3. Series 2011 bond costs include \$681,132.45 for bond insurance and \$459,709.50 for underwriter's discount.



Exhibit 5

Monthly GRP Program Funding Report

Fiscal Year 2014

Through September 30, 2014

	TWDB WIF Bond Issue	Open Market Bond Issue (Series 2011)	TWDB Dfund (Series 2011A)	TWDB Dfund (Series 2012)	TWDB Dfund (Series 2012A)	TWDB Dfund (Series 2013)	Operating (Cash)	Contributions from MUDs	Totals
A. Program Budget									
Bond Issue Amount	\$ 21,500,000.00	\$ 83,430,358.49	\$ 67,470,000.00	\$ 175,000,000.00	\$ 165,000,000.00	\$ 39,850,000.00			\$ 552,250,358.49
Operating Funds Commitment							\$ 93,379.58		\$ 93,379.58
Contributions from MUDs								\$ 294,000.00	\$ 294,000.00
Total Investment	\$ 21,500,000.00	\$ 83,430,358.49	\$ 67,470,000.00	\$ 175,000,000.00	\$ 165,000,000.00	\$ 39,850,000.00	\$ 93,379.58	\$ 294,000.00	\$ 552,637,738.07
B. Contracted Costs									
Phase I									
Contracts Completed	\$ 18,348,030.84	\$ 20,975,701.01	\$ 8,449,314.73	\$ -	\$ 1,155,745.60	\$ 3,721,564.70	\$ 14,407.80	\$ -	\$ 52,664,764.68
Current Contract Values	\$ 2,663,111.00	\$ 39,342,139.41	\$ 47,594,390.43	\$ 161,159,055.87	\$ 126,190,501.51	\$ 27,824,525.48	\$ 78,971.78	\$ -	\$ 404,852,695.48
Change Orders	\$ -	\$ 4,632,181.12	\$ 949,773.95	\$ -	\$ 2,110,782.44	\$ -	\$ -	\$ -	\$ 7,692,737.51
Project Close Out	\$ (348,037.50)	\$ (870,739.84)	\$ (172,677.43)	\$ -	\$ (64,626.72)	\$ (25.15)	\$ -	\$ -	\$ (1,456,106.64)
Phase I Total:	\$ 20,663,104.34	\$ 64,079,281.70	\$ 56,820,801.68	\$ 161,159,055.87	\$ 129,392,402.83	\$ 31,546,065.03	\$ 93,379.58	\$ -	\$ 463,754,091.03
Extensions									
Contracts Completed	\$ -	\$ 10,175.00	\$ -	\$ -	\$ -	\$ -	\$ -	\$ -	\$ 10,175.00
Current Contract Values	\$ -	\$ 762,094.00	\$ -	\$ -	\$ -	\$ -	\$ -	\$ -	\$ 762,094.00
Change Orders	\$ -	\$ -	\$ -	\$ -	\$ -	\$ -	\$ -	\$ -	\$ -
Project Close Out	\$ -	\$ -	\$ -	\$ -	\$ -	\$ -	\$ -	\$ -	\$ -
Extensions Total:	\$ -	\$ 772,269.00	\$ -	\$ -	\$ -	\$ -	\$ -	\$ -	\$ 772,269.00
C. Expenditures									
Phase I									
Paid Previous Fiscal Years	\$ 20,599,416.62	\$ 49,618,248.03	\$ 40,595,829.88	\$ 109,374,040.69	\$ 91,422,085.04	\$ 12,922,461.97	\$ 84,942.42	\$ -	\$ 324,617,024.65
Paid Current Fiscal Year	\$ -	\$ 619,027.50	\$ 2,021,673.85	\$ 4,920,949.25	\$ 3,028,535.40	\$ 3,623,231.25	\$ 516.59	\$ -	\$ 14,213,933.84
Phase I Total:	\$ 20,599,416.62	\$ 50,237,275.53	\$ 42,617,503.73	\$ 114,294,989.94	\$ 94,450,620.44	\$ 16,545,693.22	\$ 85,459.01	\$ -	\$ 338,830,958.49
Extensions									
Paid Previous Fiscal Years	\$ -	\$ 172,033.34	\$ -	\$ -	\$ -	\$ -	\$ -	\$ -	\$ 172,033.34
Paid Current Fiscal Year	\$ -	\$ -	\$ -	\$ -	\$ -	\$ -	\$ -	\$ -	\$ -
Extensions Total:	\$ -	\$ 172,033.34	\$ -	\$ -	\$ -	\$ -	\$ -	\$ -	\$ 172,033.34
Issuance Costs	\$ 470,337.08	\$ 2,049,764.39	\$ 751,195.33	\$ 971,769.13	\$ 952,269.99	\$ 628,750.00	\$ -	\$ -	\$ 5,824,085.92
Debt Service Reserve Fund	\$ -	\$ -	\$ 3,859,151.00	\$ -	\$ 16,500,000.00	\$ 3,073,489.18	\$ -	\$ -	\$ 23,432,640.18
Capitalized Interest	\$ -	\$ 7,858,241.52	\$ 5,166,233.00	\$ 12,869,175.00	\$ 14,139,669.00	\$ 3,214,292.00	\$ -	\$ -	\$ 43,247,610.52
D. Remaining									
Uncontracted Funds	\$ 366,558.58	\$ 8,670,801.88	\$ 872,618.99	\$ (0.00)	\$ 4,015,658.18	\$ 1,387,403.79	\$ -	\$ 294,000.00	\$ 15,607,041.42
Funding Balance *	\$ 430,246.30	\$ 23,113,043.71	\$ 15,075,916.94	\$ 46,864,065.93	\$ 38,957,440.57	\$ 16,387,775.60	\$ 7,920.57	\$ 294,000.00	\$ 141,130,409.62

*Excluding net investment income



Exhibit 6

GRP Program Current Authorizations as of September 30, 2014

Surface Water Transmission System - Consultant Services

Project	Firm	Amount Authorized by Board
T1	Jones & Carter	\$ 2,166,221.02
T2	Klotz Associates	\$ 1,822,718.66
T3	Espey	\$ 1,892,282.82
W1	LAN	\$ 2,729,523.15
W2	Binkley & Barfield	\$ 3,311,241.89
W3	Cobb Fendley	\$ 3,923,518.50
W4	LJA	\$ 1,350,459.39
C1	Dannenbaum	\$ 959,193.01
C2	Schaumburg & Polk	\$ 2,211,922.28
C3	Kimley Horn	\$ 1,248,690.98
C4	RG Miller	\$ 597,788.37
Fiber Optic	EMA	\$ 832,533.04
WRFs	Malcom Pirnie/Arcadis	\$ 2,680,366.57
CM&I	Kellog Brown & Root	\$ 8,657,135.48
Subtotal - Surface Water Transmission System		\$ 34,383,595.16

Surface Water Facilities - Consultant Services

Project	Firm	Amount Authorized by Board
WTP	HDR Engineering	\$ 18,775,677.92
HSPS	AECOM	\$ 4,712,513.39
StandPipe	AECOM	\$ 192,235.38
RWI&PS	Freese & Nichols	\$ 3,929,369.64
CA&I	CDMSmith	\$ 5,348,633.00
Subtotal - Surface Water Facilities		\$ 32,958,429.33

Program Consultant Services & Other Projects

Project	Firm	Amount Authorized by Board
Program Management	Brown & Gay	\$ 10,695,226.55
Program Survey	Landtech	\$ 514,524.00
Program Geotechnical	Raba Kistner	\$ 145,260.00
Prog Transient Analyses	AECOM	\$ 4,904,748.77
Access Rd/Misc Service	ACES	\$ 857,366.25
SWF Surveying	S&V Surveying	\$ 66,875.00
Land Acq	KDM	\$ 431,592.70
Land Acq	PAS	\$ 1,413,334.88
Program Environmental	Half Associates	\$ 1,063,698.87
Program Fiber Optics	EMA	\$ 832,533.04
Program Corrosion	V&A Consulting Engineers	\$ 866,676.00
Program Legal Services & Projects	Multiple	\$ 5,700,577.48
Subtotal - Program Consultant Services & Other Projects		\$ 27,492,413.54

Surface Water Transmission System Extensions - Consultant Services

Project	Firm	Amount Authorized by Board
MUD99/115	IDS Engineering Group	\$ 293,710.00
MUD99/115	Andrews & Kurth - x	\$ 100,000.00
MUD99/115	PAS - x	\$ 200,000.00
MUD99/115	Arcadis - x	\$ 36,843.00
MUD99/115	V&A Consulting Engineers - x	\$ 20,500.00
MUD99/115	Brown & Gay - x	\$ 121,216.00
Subtotal - Surface Water Transmission System Extensions		\$ 772,269.00



Exhibit 6 (con't)

GRP Program Current Authorizations as of September 30, 2014

Active or Completed Construction Contracts

Project	Firm	Amount Authorized by Board
GRP Bldg No. 1	Brookstone	\$ 2,008,673.00
Bldg No. 1/Aqua Tx CMT	Aviles Engineering	\$ 123,814.55
Landscape Buffer	Key-Scape Landscape	\$ 53,090.00
Temp Access Road	Lindsey Construction	\$ 977,583.60
Access Road CMT	Terracon Consultants	\$ 10,359.70
Access Road Overlay and Detention	AAA Asphalt	\$ 412,284.59
Access Road Landscape	TreeScapes	\$ 34,165.00
Aqua Texas Sewer	Randy Roan Construction	\$ 547,341.17
Bldg No. 1 Fiber Line	Preferred Technologies	\$ 231,157.56
Surface Water Plant (CMAR)	McCarthy	\$ 190,704,740.00
SWF CMT	Geotest	\$ 1,976,659.00
Transmission Sytem Utility Relocations	Various	\$ 2,062,614.14
Transmission System CMT (T3, W1, W2, W3, W4)	Aviles	\$ 1,601,330.00
Transmission System CMT (T1, T2, C1, C2, C3, C4)	Terracon	\$ 1,006,711.25
Transmission Segment T1	S.J. Louis Construction of Texas Ltd	\$ 14,521,937.14
Transmission Segment T2	Texas Sterling Construction Company	\$ 13,475,718.33
Transmission Segment T3	S.J. Louis Construction of Texas Ltd	\$ 11,393,193.97
Transmission Segment C1A	Garney Companies, Inc.	\$ 3,837,683.40
Transmission Segment C1B	E.P. Brady, LTD.	\$ 544,393.60
Transmission Segment C2	Garney Companies, Inc.	\$ 9,014,837.00
Transmission Segment C3	E.P. Brady, LTD.	\$ 4,972,314.80
Transmission Segment C4	BRH-Garver Construction, L.P.	\$ 5,115,396.90
Transmission Segment W1A	Huff & Mitchell, Inc.	\$ 8,222,000.50
Transmission Segment W1B	Texas Sterling Construction Company	\$ 7,213,544.50
Transmission Segment W2A	Texas Sterling Construction Company	\$ 16,340,258.02
Transmission Segment W2B	Texas Sterling Construction Company	\$ 16,161,600.00
Transmission Segment W3A	Huff & Mitchell, Inc.	\$ 7,880,207.50
Transmission Segment W3B	Garney Companies, Inc.	\$ 8,124,485.50
Transmission Segment W4	Huff & Mitchell, Inc.	\$ 3,656,604.23
Receiving Facilities South	CSA	\$ 7,127,383.00
Receiving Facilities North	Archer Western	\$ 6,160,184.55
Transmission SCADA - Fiber Optic Construction	Fisk Electric Company	\$ 2,885,432.35
Miscellaneous	Other Construction Contracts, Permits, Fees, etc.	\$ 233,666.23
Subtotal - Construction Contracts		\$ 348,631,365.08

Totals

	Amount Authorized by Board
Surface Water Transmission System - Consultant Services	\$ 34,383,595.16
Surface Water Facilities - Consultant Services	\$ 32,958,429.33
Program Consultant Services & Other Projects	\$ 27,492,413.54
Surface Water Transmission System Extensions - Consultant Services	\$ 772,269.00
Active or Completed Construction Contracts	\$ 348,631,365.08
Total	\$ 444,238,072.11



Exhibit 7

GRP Program Land Acquisition Summary as of September 30, 2014

Project	Anticipated Number of Easements to Acquire	Easements Acquired This Month	Total Easements Acquired and Filed	Total Easements Remaining to be Finalized ¹
Transmission System Segment T1	59	0	59	0
Transmission System Segment T2	0	0	0	0
Transmission System Segment T3	18	0	18	0
Transmission System Segment C1	19	0	19	0
Transmission System Segment C2	80	0	80	0
Transmission System Segment C3	34	0	21	13
Transmission System Segment C4	4	0	4	0
Transmission System Segment W1	32	0	32	0
Transmission System Segment W2	10	0	10	0
Transmission System Segment W3	177	0	176	1
Transmission System Segment W4	9	0	9	0
Totals:	442	0	428	14

¹ Note: Includes final cleanup of title on other legal issues, while right of entry may have been required



Exhibit 8-1

San Jacinto River Authority Groundwater Reduction Plan

Schedule of Revenues & Expenses—Actual and Budget For the Twelve Months Ending August 31, 2014

	August	Fiscal Year To Date				Fiscal Budget	
	Actual	Actual	Budget	Variance	% Variance	Total Year Budget	Actual YTD % of Total Year Budget
OPERATING REVENUES							
GRP pumping fees	\$ 4,307,305	\$ 31,293,612	\$ 34,118,874	\$ (2,825,262)	(8%)	\$ 34,118,874	92%
TOTAL OPERATING REVENUES	\$ 4,307,305	\$ 31,293,612	\$ 34,118,874	\$ (2,825,262)	(8%)	\$ 34,118,874	92%
OPERATING EXPENSES							
Payroll & employee benefit expenses	\$ 268,500	\$ 2,957,538	\$ 4,644,900	\$ 1,687,362	36%	\$ 4,644,900	64%
Professional fees	15,478	443,182	813,000	369,818	45%	813,000	55%
Purchased & contracted services	17,580	120,386	239,871	119,485	50%	239,871	50%
Supplies, materials & utilities	77,621	3,505,145	3,747,401	242,256	6%	3,747,401	94%
Maintenance repairs, parts & rentals	1,491	14,800	17,160	2,360	14%	17,160	86%
General & administration	94,514	651,577	850,563	198,986	23%	850,563	77%
TOTAL OPERATING EXPENSES	\$ 475,183	\$ 7,692,628	\$ 10,312,895	\$ 2,620,267	25%	\$ 10,312,895	75%
NON-OPERATING REVENUES & EXPENSES							
Interest on investments	\$ 72,106	\$ 684,463	\$ 696,936	\$ (12,473)	(2%)	\$ 696,936	98%
Other revenues	-	2,129	-	2,129	100%	-	0%
Interest expense	(1,787,500)	(21,350,637)	(14,844,597)	(6,506,040)	44%	(14,844,597)	144%
Capital contributions	-	294,000	-	294,000	100%	-	0%
TOTAL NON-OPERATING (EXCLUDING ITEMS NOT BUDGETED)	\$ (1,715,394)	\$ (20,370,044)	\$ (14,147,661)	\$ (6,222,383)	44%	\$ (14,147,661)	144%
NET INCOME (LOSS) (EXCLUDING ITEMS NOT BUDGETED)	\$ 2,116,728	\$ 3,230,939	\$ 9,658,318	\$ (6,427,379)	(67%)	\$ 9,658,318	33%
NON-OPERATING REVENUES & EXPENSES (NOT BUDGETED)							
Depreciation	\$ (32,978)	\$ (292,959)	\$ -	\$ (292,959)	100%	\$ -	0%
Amortized debt issuance expense	(612,655)	(613,155)	-	(613,155)	100%	-	0%
TOTAL NON-OPERATING (NOT BUDGETED)	\$ (645,633)	\$ (906,114)	\$ -	\$ (906,114)	100%	\$ -	0%
NET INCOME (LOSS) (BUDGETED AND NOT BUDGETED)	\$ 1,471,096	\$ 2,324,825	\$ 9,658,318	\$ (7,333,493)	(76%)	\$ 9,658,318	24%

*The Budget is a cash basis budget however the actual interest expense is accrued monthly. Seven months of 2012A Bond payments were funded by the bond issue and are reflected on the Balance Sheet in Restricted Assets Debt Service Funds, Investments. The Interest Expense appears over-budget due to not budgeting for the pre-funded bond payments.



Exhibit 8-1 (con't)

GRP Division

Clarification of Actual & Budget Variances

Category	YTD - Driver	August 2014	FYTD 2014
GRP Pumping Fees	Usage variance due to weather conditions and change in consumer behavior. This issue will continue to be monitored to see if it becomes a trend that must be addressed in future budgets and rates, thus giving a "warning" of potential need for higher rates due to changed consumer behavior.	490	(2,825)
Payroll and related expenses	Budgeted positions not filled as scheduled.	97	1,687
Professional Fees	Professional fees less than budgeted.	57	370
Purchased & Contracted Services	Purchased and contracted services less than budgeted.	2	119
Supplies, Materials, Utilities, Maintenance, Repairs, Parts & Rentals	Fuel, office supplies, phones, recruiting and misc. expenses less than budgeted.	(6)	252
	Reservation Fee-COH 2013 Actuals	-	(123)
	Additional Water Supply	(29)	114
	Maintenance repairs, parts & rentals expense less than budgeted.	(1)	2
General & Administration	Allocated labor and related expenses less than budgeted, anticipated a quicker rate of growth than has been actualized.	(22)	199
Non-Operating	Interest/Investment Income	14	(12)
	Other Revenues	-	2
	Bond interest expense	(217)	(6,506)
	Capital Contributions	-	294
	Depreciation expense	(33)	(293)
	Bond Issuance Cost Amort expense	(612)	(613)
		(260)	(7,333)



Exhibit 8-2

San Jacinto River Authority Groundwater Reduction Plan

Schedule of Revenues & Expenses—Actual and Budget

For the One Month Ending September 30, 2014

	Sep	Fiscal Year To Date				Fiscal Budget	
	Actual	Actual	Budget	Variance	% Variance	Total Year Budget	Actual YTD % of Total Year Budget
OPERATING REVENUES							
GRP pumping fees	3,941,189	3,941,189	4,949,192	(1,008,003)	(20%)	41,992,101	9%
GRP surface water sales	\$ -	\$ -	\$ -	-	0%	\$ 4,942,463	0%
TOTAL OPERATING REVENUES	\$ 3,941,189	\$ 3,941,189	\$ 4,949,192	\$ (1,008,003)	(20%)	\$ 46,934,564	8%
OPERATING EXPENSES							
Payroll & employee benefit expenses	\$ 313,628	\$ 313,628	\$ 400,209	86,581	22%	\$ 5,108,247	6%
Professional fees	3,000	3,000	46,400	43,400	94%	556,800	1%
Purchased & contracted services	3,704	3,704	25,644	21,941	86%	307,732	1%
Supplies, materials & utilities	11,272	11,272	316,055	304,784	96%	6,815,340	0%
Maintenance repairs, parts & rentals	113	113	6,583	6,470	98%	105,750	0%
General & administration	31,057	31,057	78,861	47,804	61%	946,329	3%
TOTAL OPERATING EXPENSES	\$ 362,773	\$ 362,773	\$ 873,752	\$ 510,979	58%	\$ 13,840,198	3%
NON-OPERATING REVENUES & EXPENSES							
Interest on investments	\$ 2,943	\$ 2,943	\$ 16,640	(13,697)	(82%)	\$ 199,680	1%
Interest expense	(1,787,500)	(1,787,500)	(1,787,500)	0	(0%)	(21,360,309)	8%
TOTAL NON-OPERATING (EXCLUDING ITEMS NOT BUDGETED)	\$ (1,784,556)	\$ (1,784,556)	\$ (1,770,860)	\$ (13,696)	1%	\$ (21,160,629)	8%
NET INCOME (LOSS) (EXCLUDING ITEMS NOT BUDGETED)	\$ 1,793,859	\$ 1,793,859	\$ 2,304,579	\$ (510,721)	(22%)	\$ 11,933,737	15%
NON-OPERATING REVENUES & EXPENSES (NOT BUDGETED)							
Depreciation	\$ (32,978)	\$ (32,978)	\$ -	(32,978)	100%	\$ -	0%
TOTAL NON-OPERATING (NOT BUDGETED)	\$ (32,978)	\$ (32,978)	\$ -	\$ (32,978)	100%	\$ -	0%
NET INCOME (LOSS) (BUDGETED AND NOT BUDGETED)	\$ 1,760,881	\$ 1,760,881	\$ 2,304,579	\$ (543,699)	(24%)	\$ 11,933,737	15%



Exhibit 8-2 (con't)

GRP Division

Clarification of Actual & Budget Variances

Category	YTD - Driver	September 2014	FYTD 2015
GRP Pumping Fees	Usage variance due to weather conditions and change in consumer behavior.	(1,008)	(1,008)
Payroll and related expenses	Budgeted positions not filled as scheduled.	87	87
Professional Fees	Professional fees less than budgeted.	43	43
Purchased & Contracted Services	Purchased and contracted services less than budgeted.	22	22
Supplies, Materials, Utilities, Maintenance, Repairs, Parts & Rentals	Fuel, office supplies, phones, recruiting and misc. expenses less than budgeted.	50	50
	Chemicals-no usage this month	188	188
	Utilities-less than budgeted	67	67
	Maintenance repairs, parts & rentals expense less than budgeted.	6	6
General & Administration	Allocated labor and related expenses less than budgeted, anticipated a quicker rate of growth than has been actualized.	48	48
Non-Operating	Interest/Investment Income	(14)	(14)
	Other Revenues	-	-
	Bond interest expense	-	-
	Capital Contributions	-	-
	Depreciation expense	(33)	(33)
	Bond Issuance Cost Amort expense	-	-
		<u>(544)</u>	<u>(544)</u>



Exhibit 9

GRP Program Monthly Meeting Log for September 2014

Meeting	Subject of Meeting	Location	Date	Participants
Blue Lake Sediment Issue - Montgomery Trace	Construction	GRP Building	9/3/2014	SJRA Staff, Consultant Team, and Montgomery Trace Representatives
Surface Water Project	Surface Water Project	Public Works Office	9/3/2014	SJRA Staff and Public Works Representatives
RFP 14-049 Pre-Proposal Meeting for WTL Segment W3D	Segment W3D	G&A Building	9/3/2014	SJRA Staff and Consultant Team
Water Receiving Facilities - South Start Up Requirements	WRF-S	GRP Building	9/9/2014	SJRA Staff and Consultant Team
Start Up Discussion of Surface Water Facilities	SWF	GRP Building	9/16/2014	SJRA Staff and Consultant Team
Township Board of Directors Update	GRP Program	Township	9/18/2014	SJRA Staff, Township Board of Directors, and General Public
Segment T3/Sendera Ranch Road Widening Discussion	Segment T3	GRP Building	9/19/2014	SJRA Staff and Consultant Team
Raw Water Intake Start Up Plan Review	Raw Water Intake	GRP Building	9/24/2014	SJRA Staff and Consultant Team
GRP Review Committee Meeting	Board Agenda Items	G&A Building	9/22/2014	GRP Review Committee, SJRA Staff and General Public
SJRA Board of Directors Meeting	Board Agenda Items	G&A Building	9/25/2014	SJRA Board of Directors, SJRA Staff and General Public



Exhibit 9 (con't)

GRP Program Monthly Meeting Log for September 2014

Meeting	Subject of Meeting	Location	Date	Participants
CMAR Coordination Meeting	CMAR	GRP Building	Weekly	SJRA Staff, GRP Program Team and Consultant Team
Construction Administration and Inspection Meetings	Construction	GRP Building	Weekly	SJRA Staff, GRP Program Team and CA&I Team
Water Receiving Facilities-South Progress Meeting	WRF-S	GRP Building	Monthly	Contractor, SJRA Staff, GRP Program Team and Consultant Team
Water Receiving Facilities-North Progress Meeting	WRF-N	GRP Building	Monthly	Contractor, SJRA Staff, GRP Program Team and Consultant Team
Segments W1A, W1B, W2A, W2B, W3A, W3B, and W4 Progress Meetings	Segments W1A, W1B, W2A, W2B, W3A, W3B, and W4	GRP Building	Monthly	Contractor, SJRA Staff, GRP Program Team, and Consultant Team
Segments T1 and T2 Progress Meetings	Segments T1 and T2	GRP Building	Monthly	Contractor, SJRA Staff, GRP Program Team, and Consultant Team
Segment T3 Bi-Weekly Progress Meeting	Segment T3	GRP Building	Bi-Weekly	Contractor, SJRA Staff, GRP Program Team, and Consultant Team
Segments C1A, C1B, C2, C3 and C4 Monthly Status Meetings	Segments C1A, C1B, C2, C3 and C4	GRP Building	Monthly	Contractor, SJRA Staff, GRP Program Team, and Consultant Team
Standpipe Progress Meeting	Standpipe	GRP Building	Monthly	Contractor, SJRA Staff, GRP Program Team, and Consultant
FONCS Monthly Progress Meetings	FONCS	GRP Building	Monthly	Contractor, SJRA Staff, GRP Program Team, and Consultant
Surface Water Facility Progress Meeting	Surface Water Facilities	GRP Building	Bi-Monthly	SJRA Staff, CMAR, CA&I, and Consultant Team



Surface Water Facilities Construction Photos



EXHIBIT 10 SWF Construction Photos



EXHIBIT 10 (con't) SWF Construction Photos



❶ Pump motor installation at the Raw Water Intake and Pump Station

EXHIBIT 10 (con't) SWF Construction Photos



② *Hoseless Sludge Collection System installation at the Pretreatment Facility*

EXHIBIT 10 (con't) SWF Construction Photos



③ *Chemical storage tank and feed pumps at the Membrane Building*

EXHIBIT 10 (con't) SWF Construction Photos



④ *Piping and instrumentation installation at the Granulated Activated Carbon (GAC) Building*

EXHIBIT 10 (con't) SWF Construction Photos



⑤ *Pump and motor assemblies at the High Service Pump Station*

EXHIBIT 10 (con't) SWF Construction Photos



⑥ *Stilling well and catwalk installation at the Sludge Thickeners*

EXHIBIT 10 (con't) SWF Construction Photos



⑦ *Kitchen area in the Operations Building*

EXHIBIT 10 (con't) SWF Construction Photos



⑦ *Entry logo in the Operations Building*

Transmission Line System Construction Photos



EXHIBIT 11 Transmission Line System Construction Photos

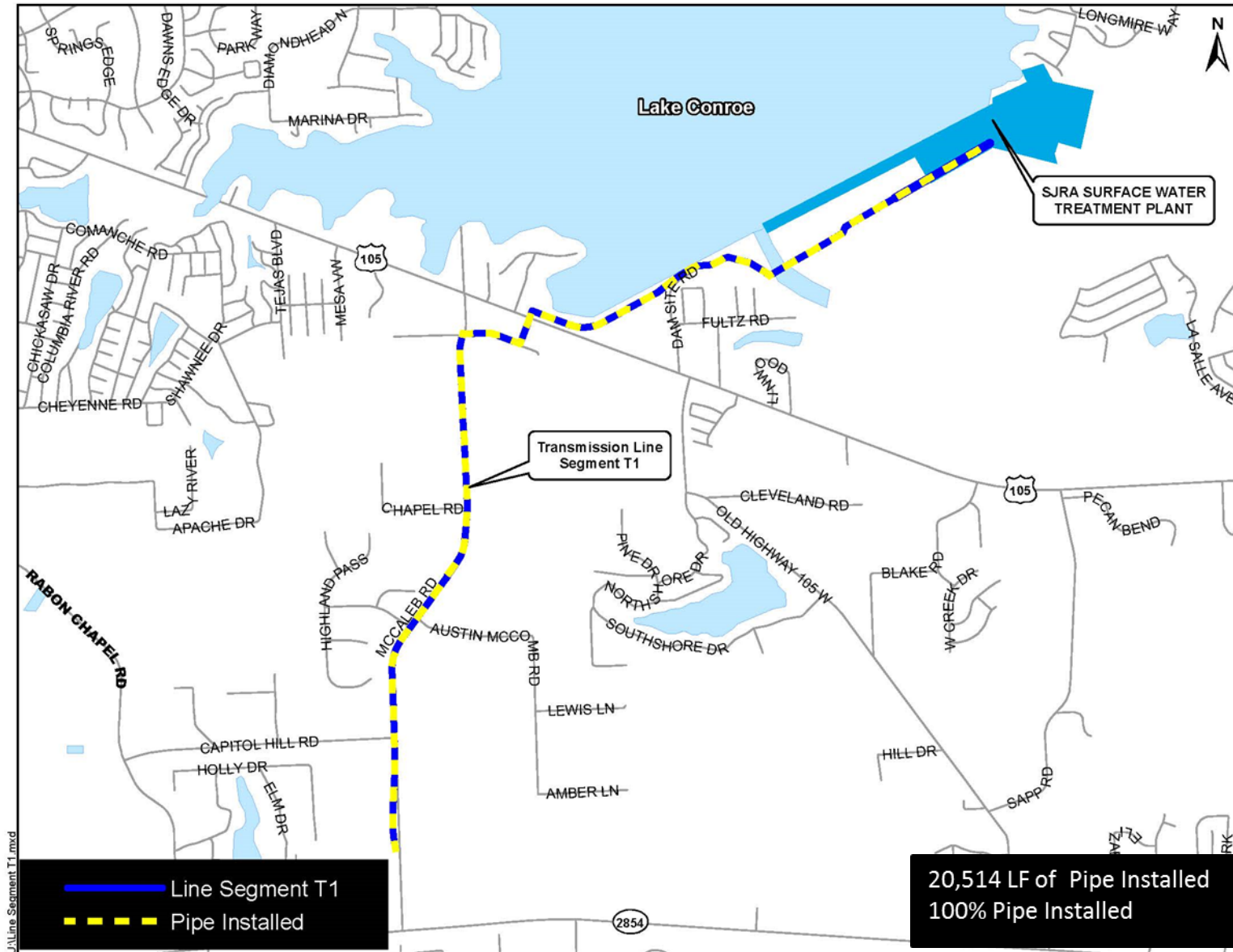


EXHIBIT 11 (con't) Transmission Line System Construction Photos

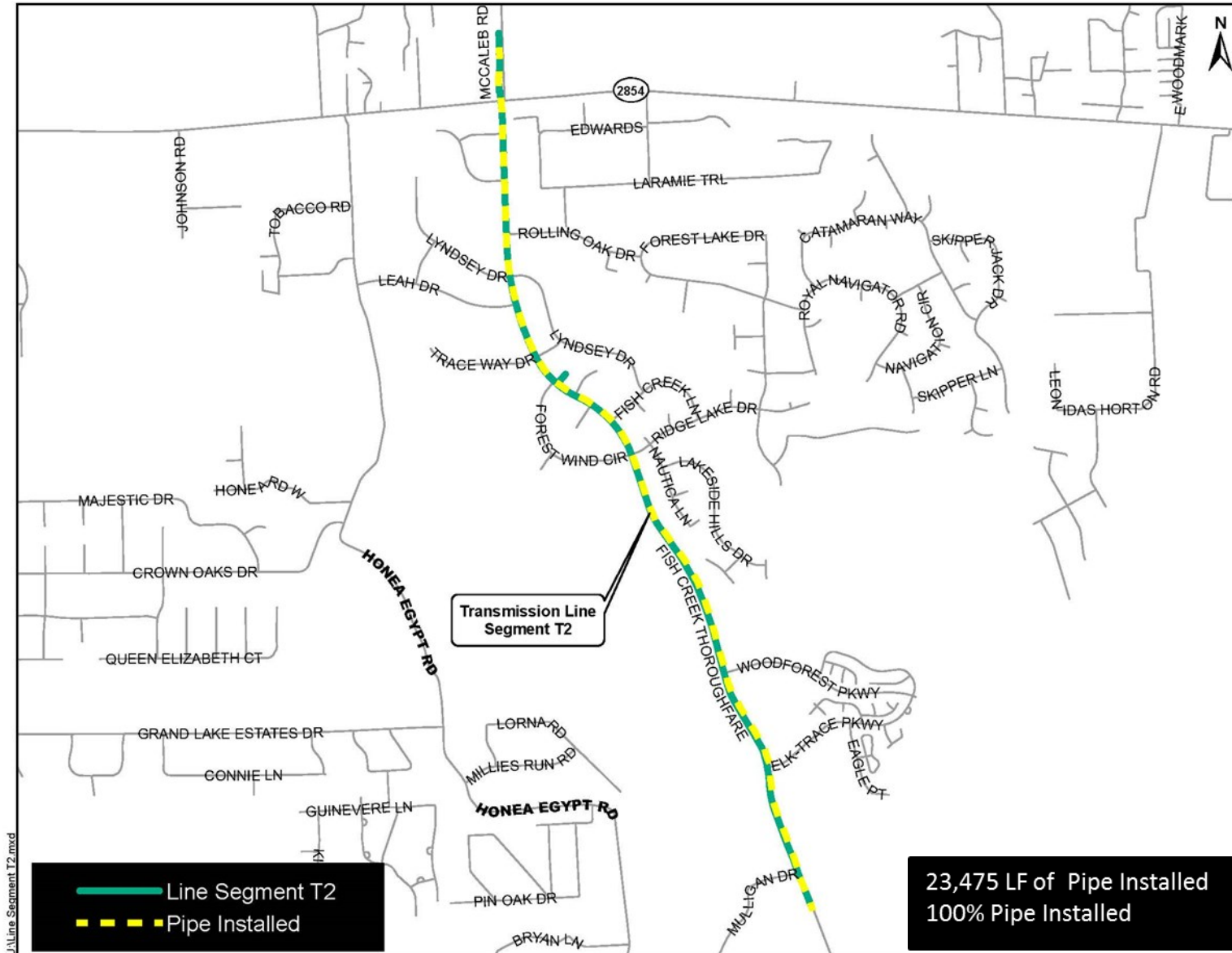


EXHIBIT 11 (con't) Transmission Line System Construction Photos

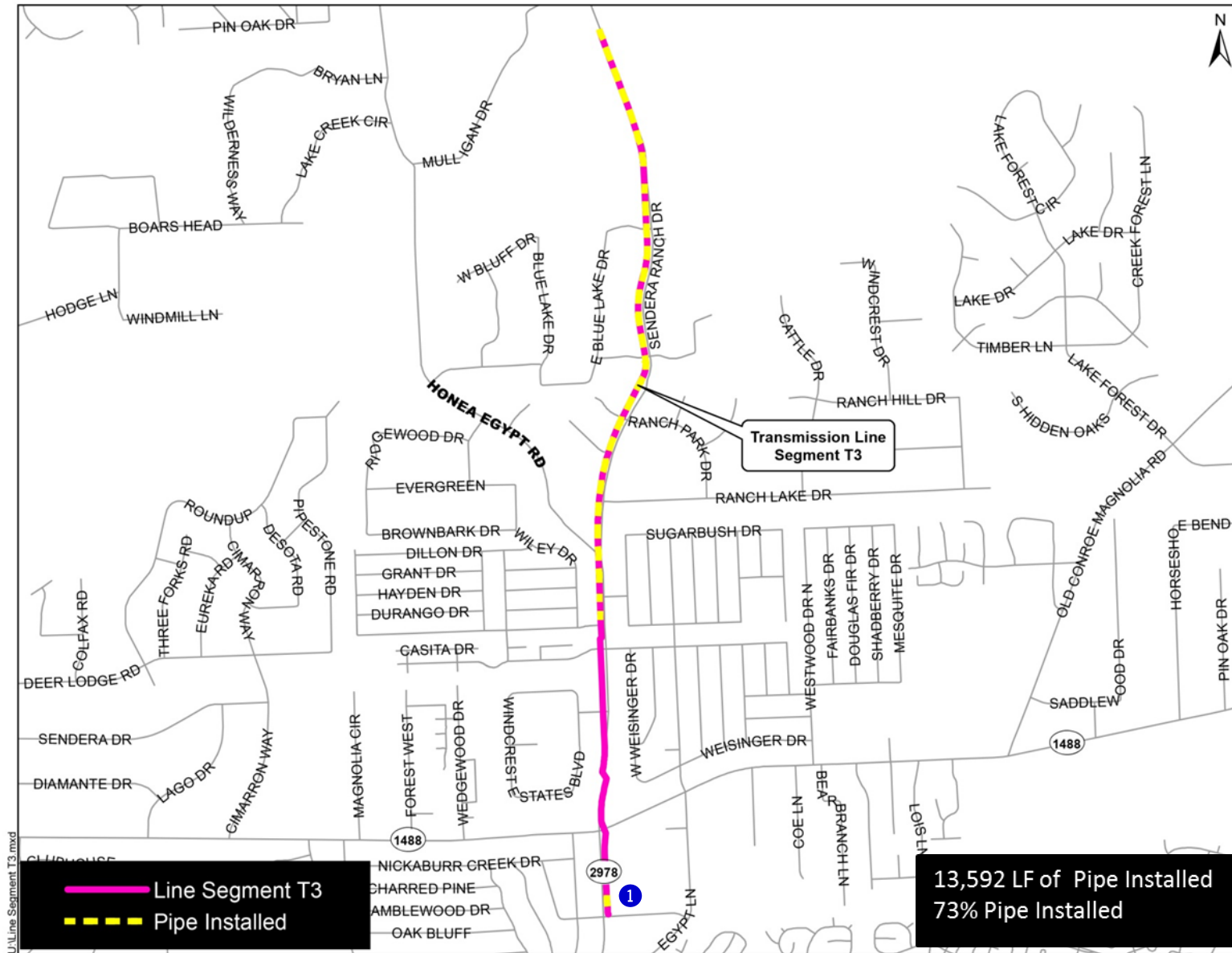


EXHIBIT 11 (con't) Transmission Line System Construction Photos



① *Segment T3— 54-inch open-cut pipe installation along FM 2978 south of FM 1488*

EXHIBIT 11 (con't) Transmission Line System Construction Photos

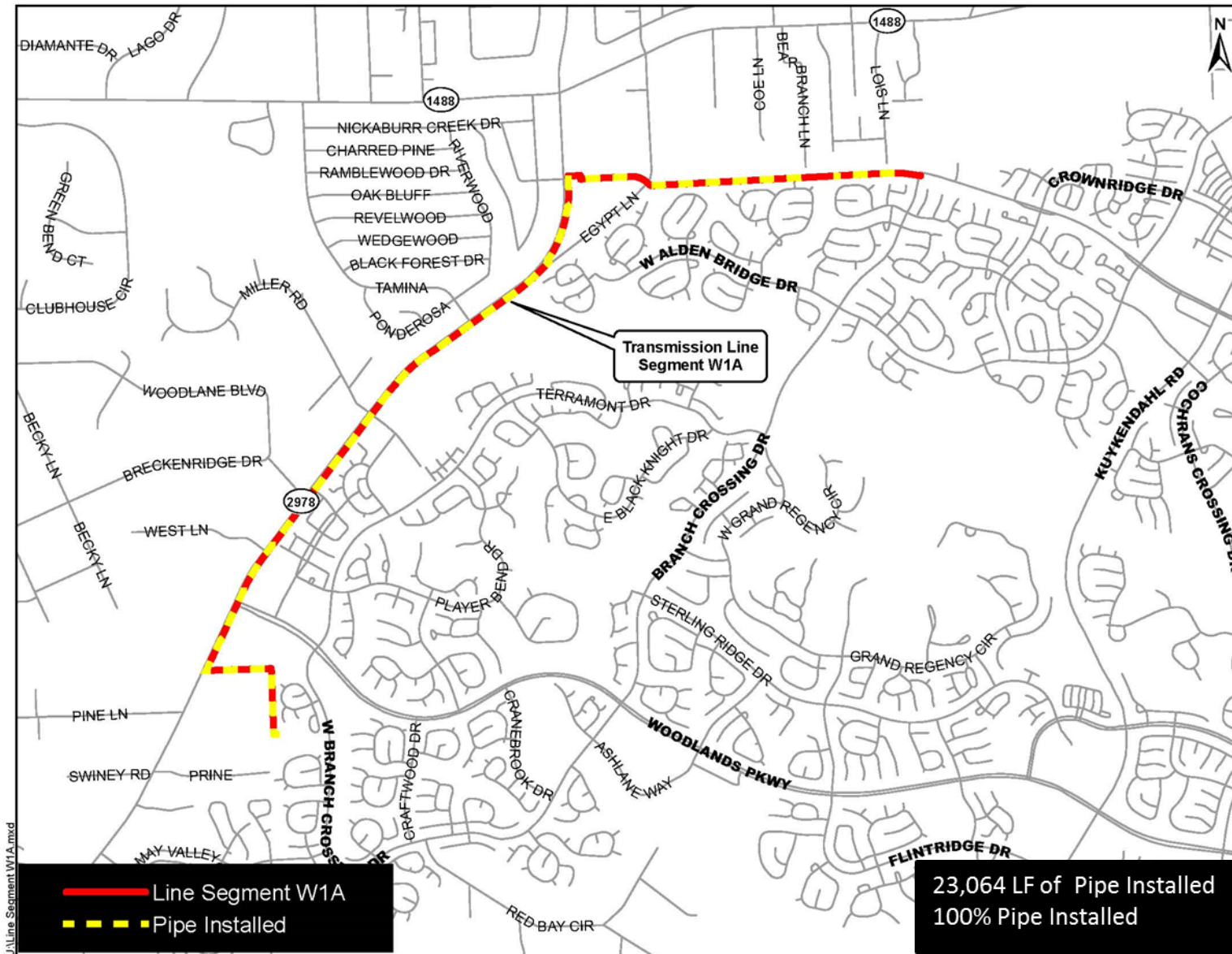


EXHIBIT 11 (con't) Transmission Line System Construction Photos

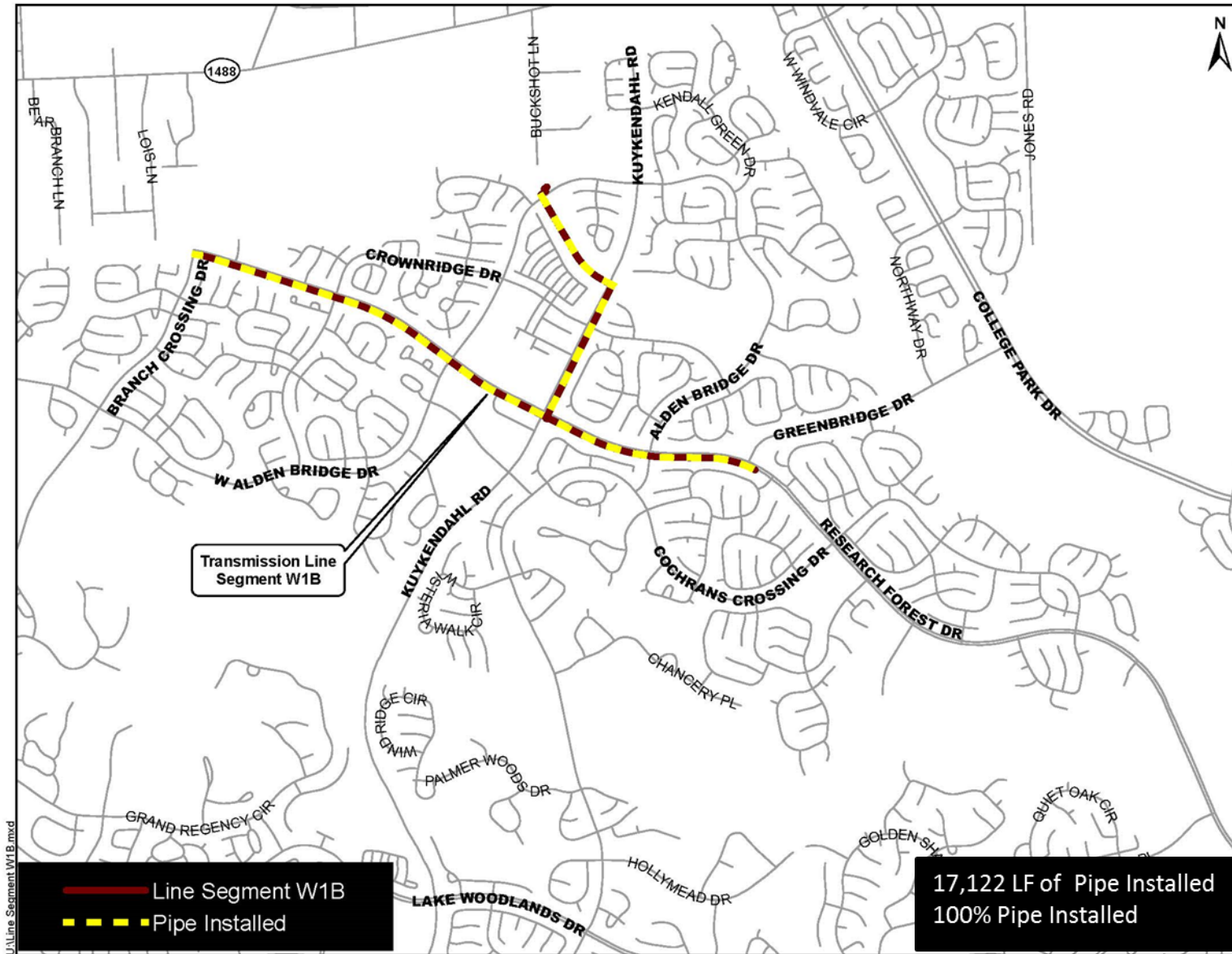


EXHIBIT 11 (con't) Transmission Line System Construction Photos

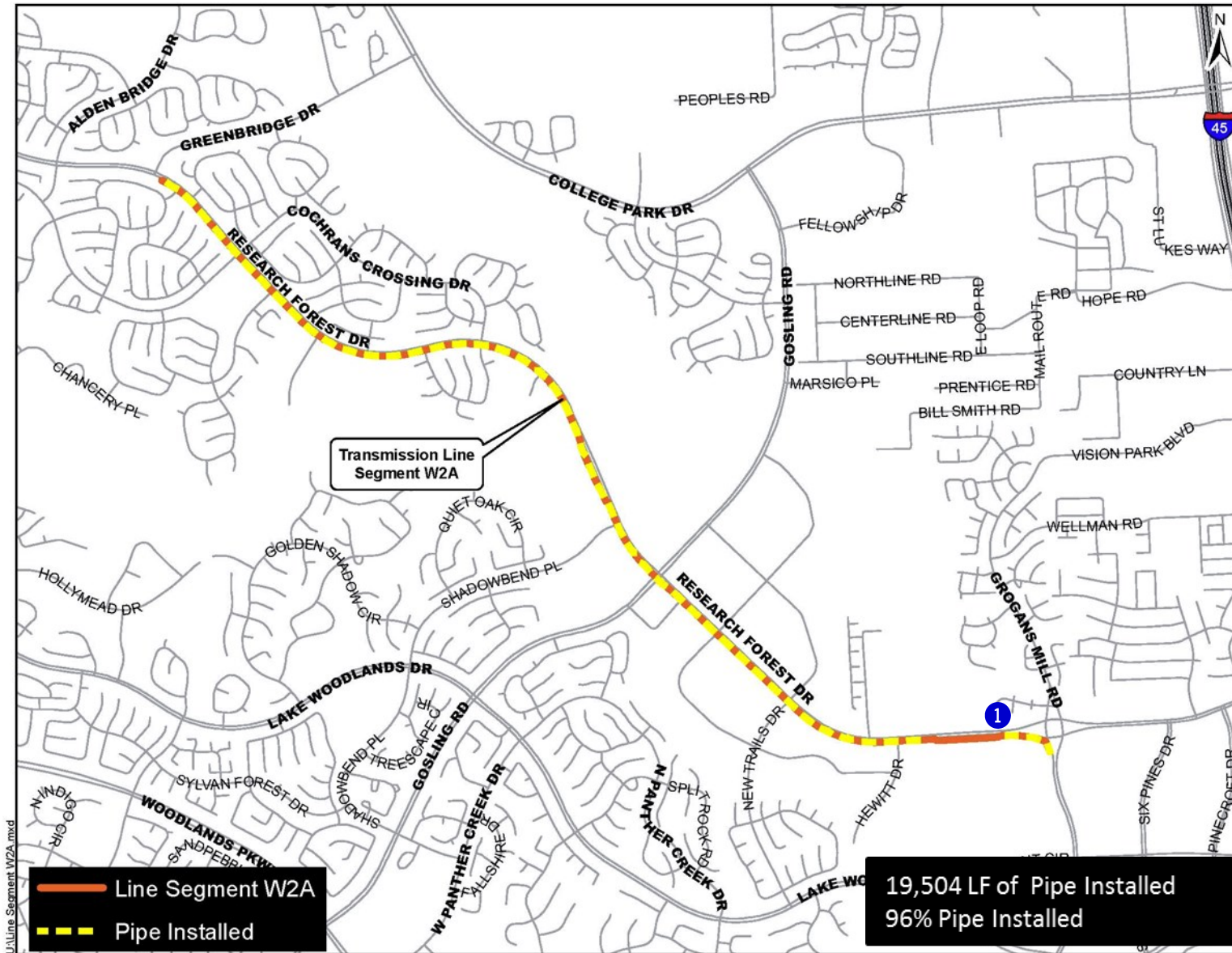


EXHIBIT 11 (con't) Transmission Line System Construction Photos



① Segment W2A— 30-inch pipe and fiber optic conduit installation along Research Forest



EXHIBIT 11 (con't) Transmission Line System Construction Photos

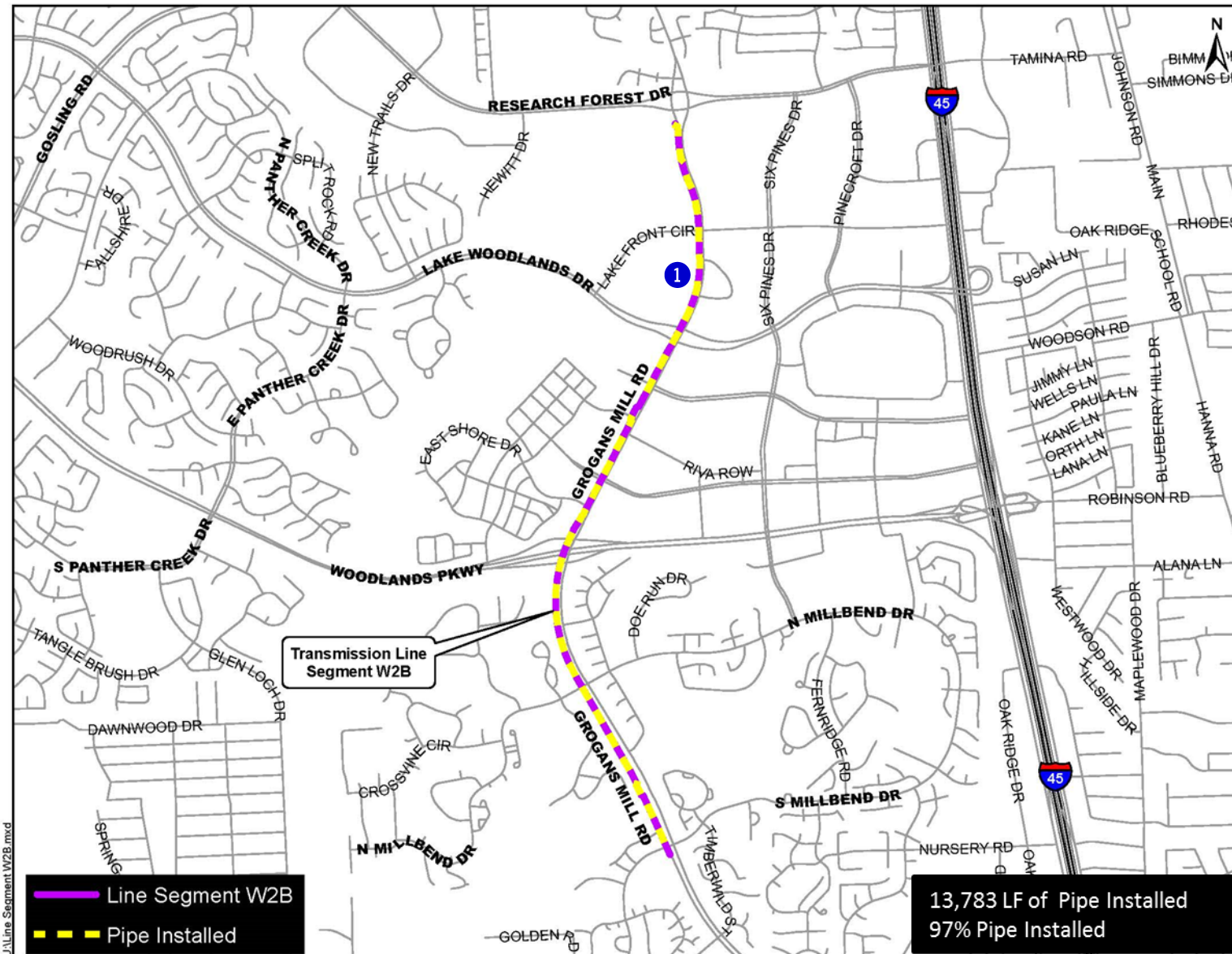


EXHIBIT 11 (con't) Transmission Line System Construction Photos



① *Segment W2B - Asphalt shoulder restoration along Grogans Mill Road at Evergreen Circle*

EXHIBIT 11 (con't) Transmission Line System Construction Photos

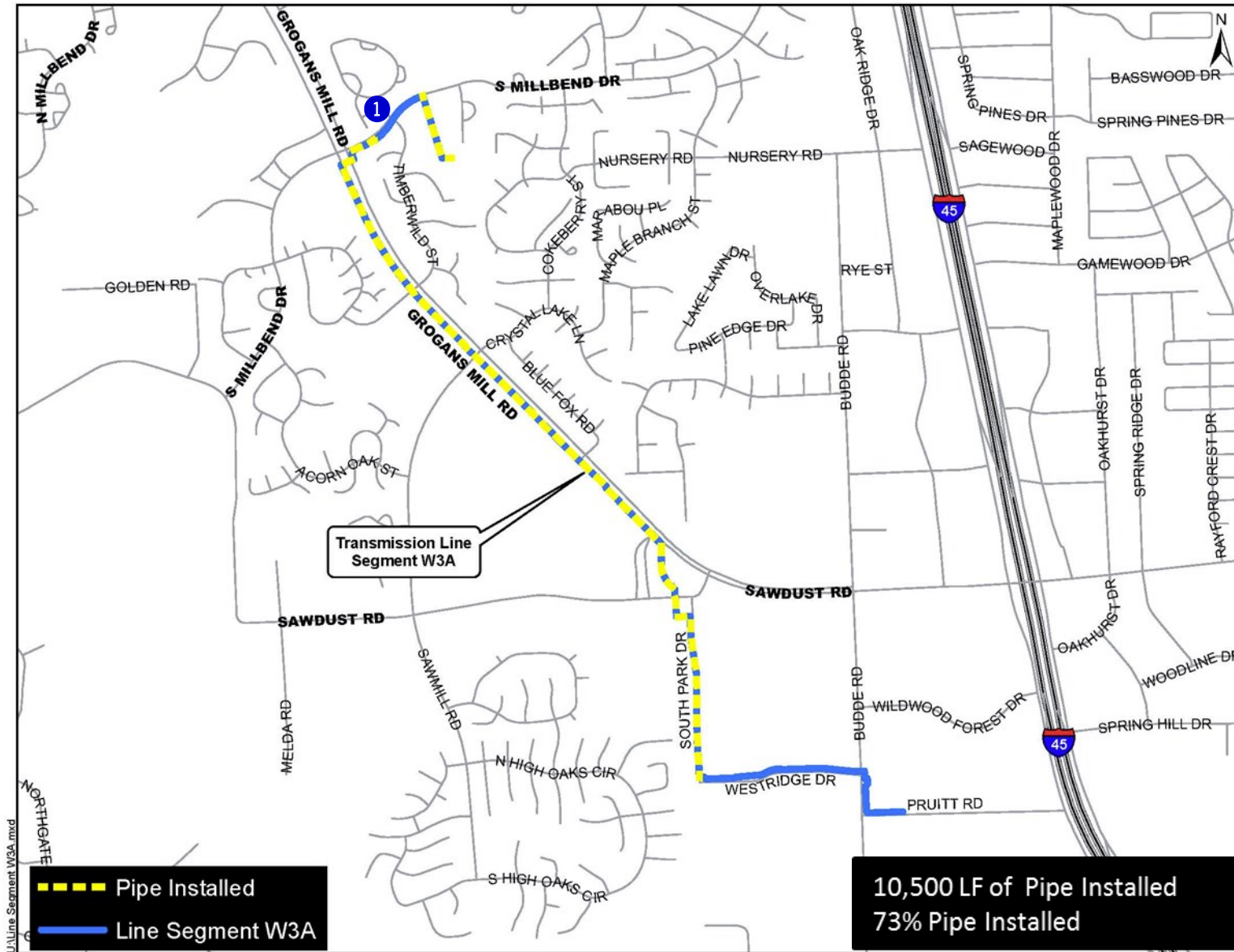


EXHIBIT 11 (con't) Transmission Line System Construction Photos



① *Segment W3A - 24-inch open-cut pipe installation along South Millbend Drive*

EXHIBIT 11 (con't) Transmission Line System Construction Photos

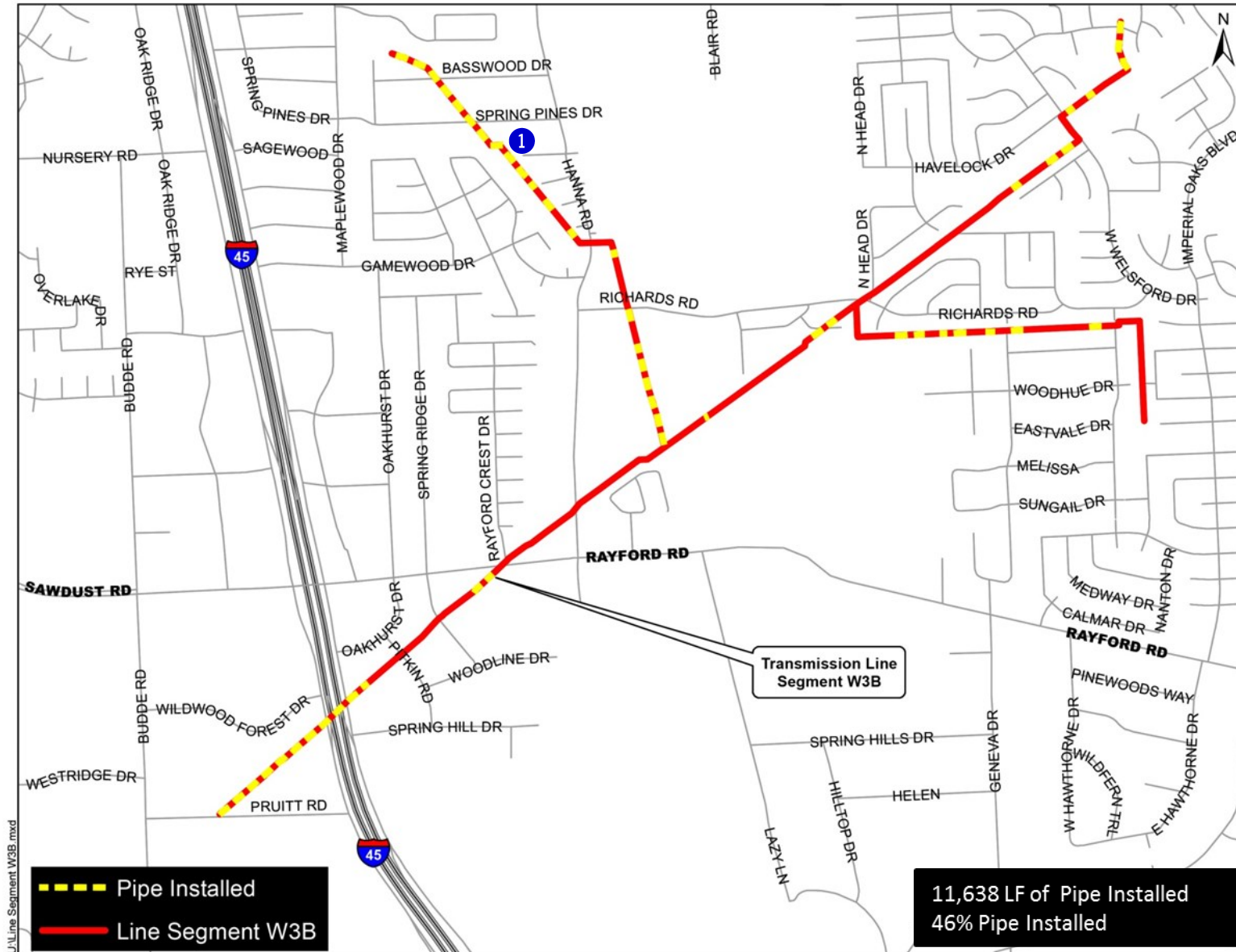


EXHIBIT 11 (con't) Transmission Line System Construction Photos



① Segment W3B - Air vacuum relief valve manhole installation

EXHIBIT 11 (con't) Transmission Line System Construction Photos

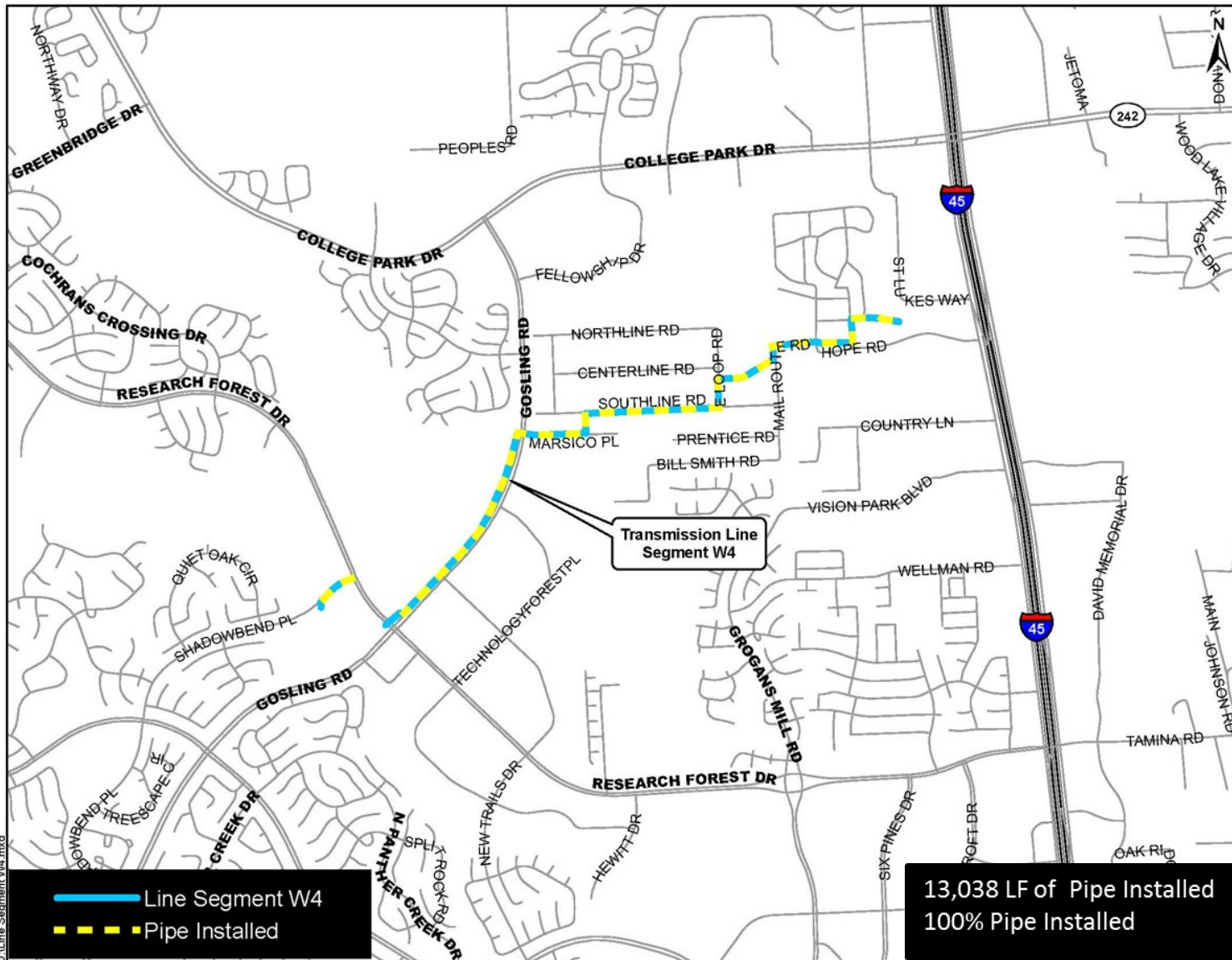


EXHIBIT 11 (con't) Transmission Line System Construction Photos

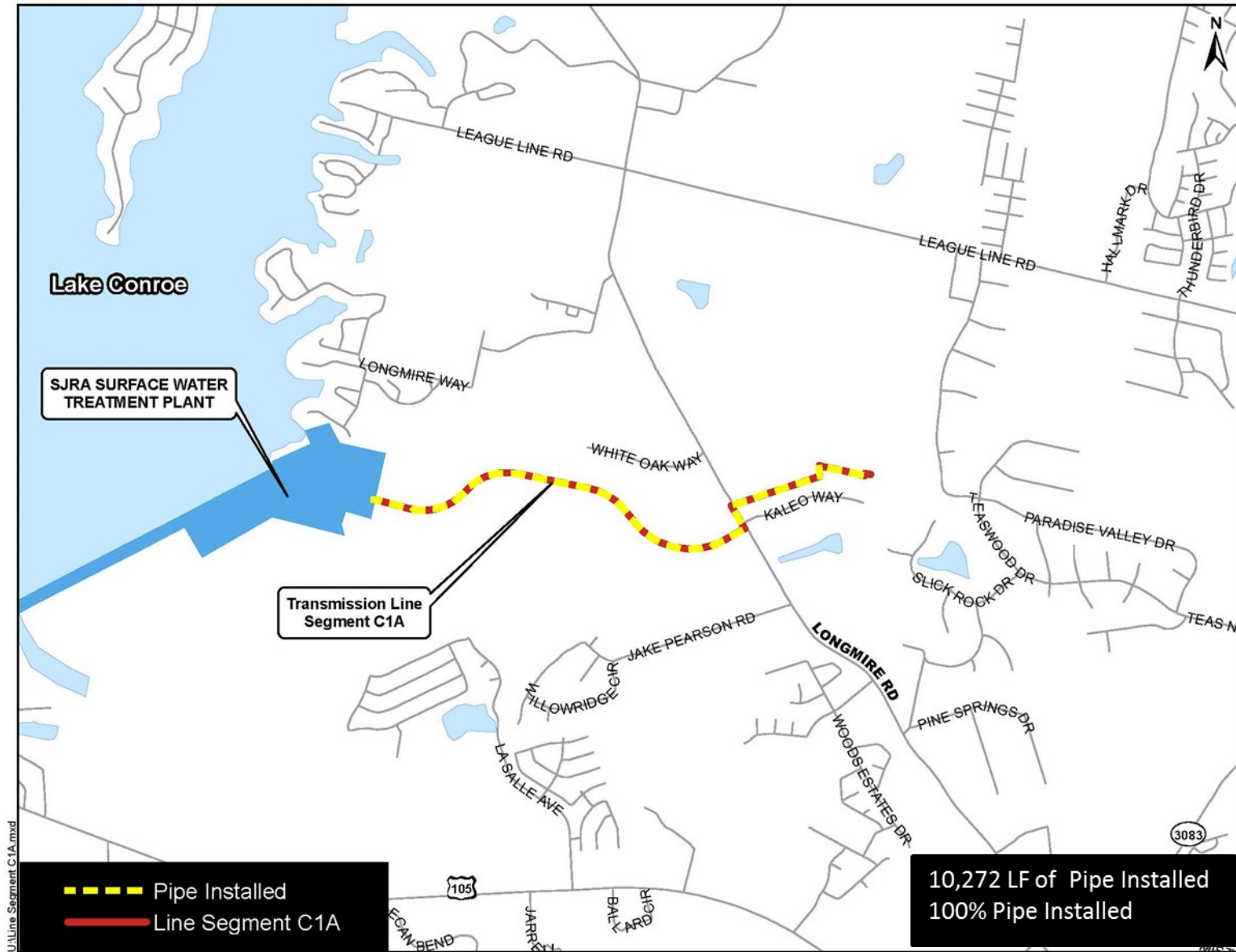


EXHIBIT 11 (con't) Transmission Line System Construction Photos

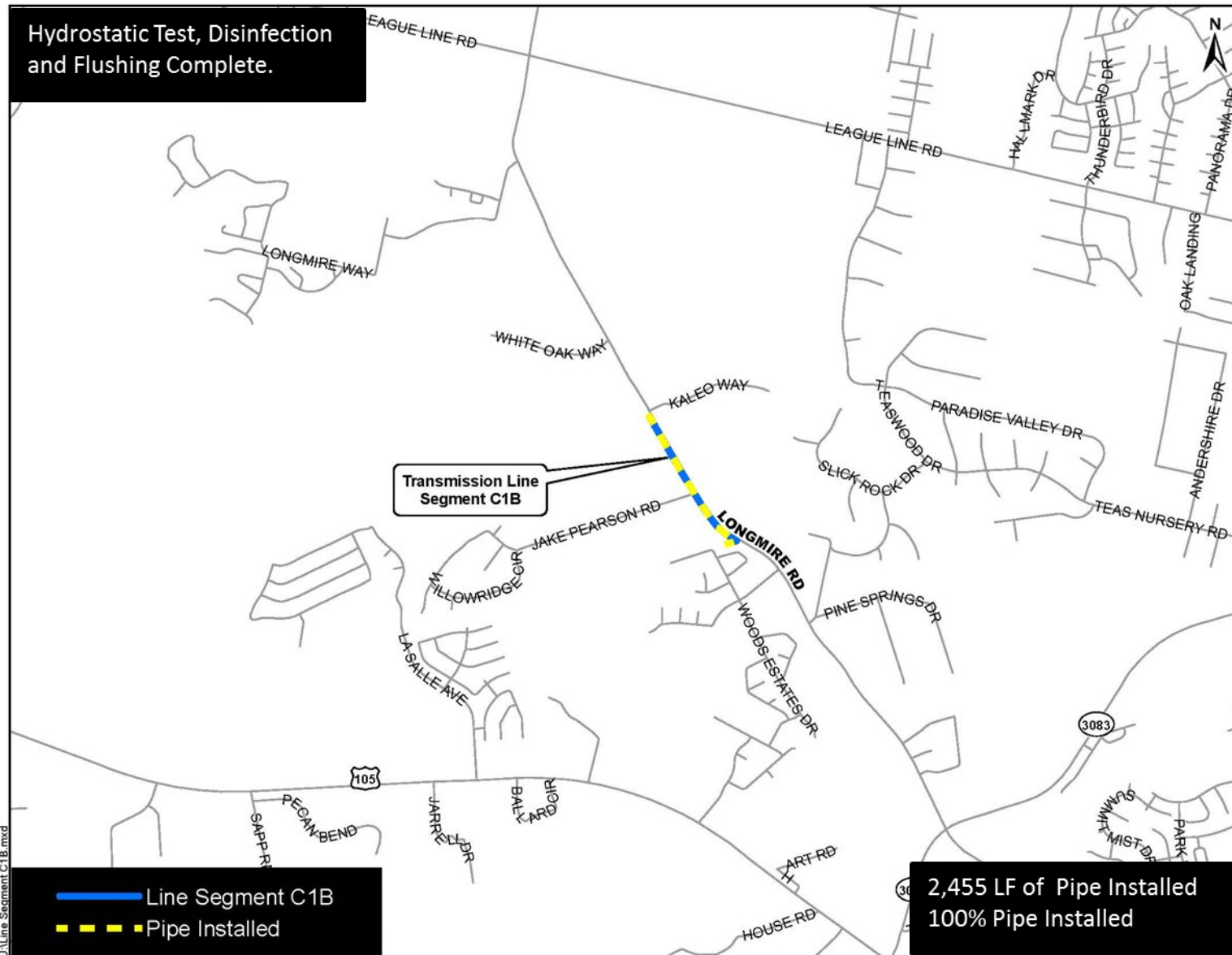


EXHIBIT 11 (con't) Transmission Line System Construction Photos

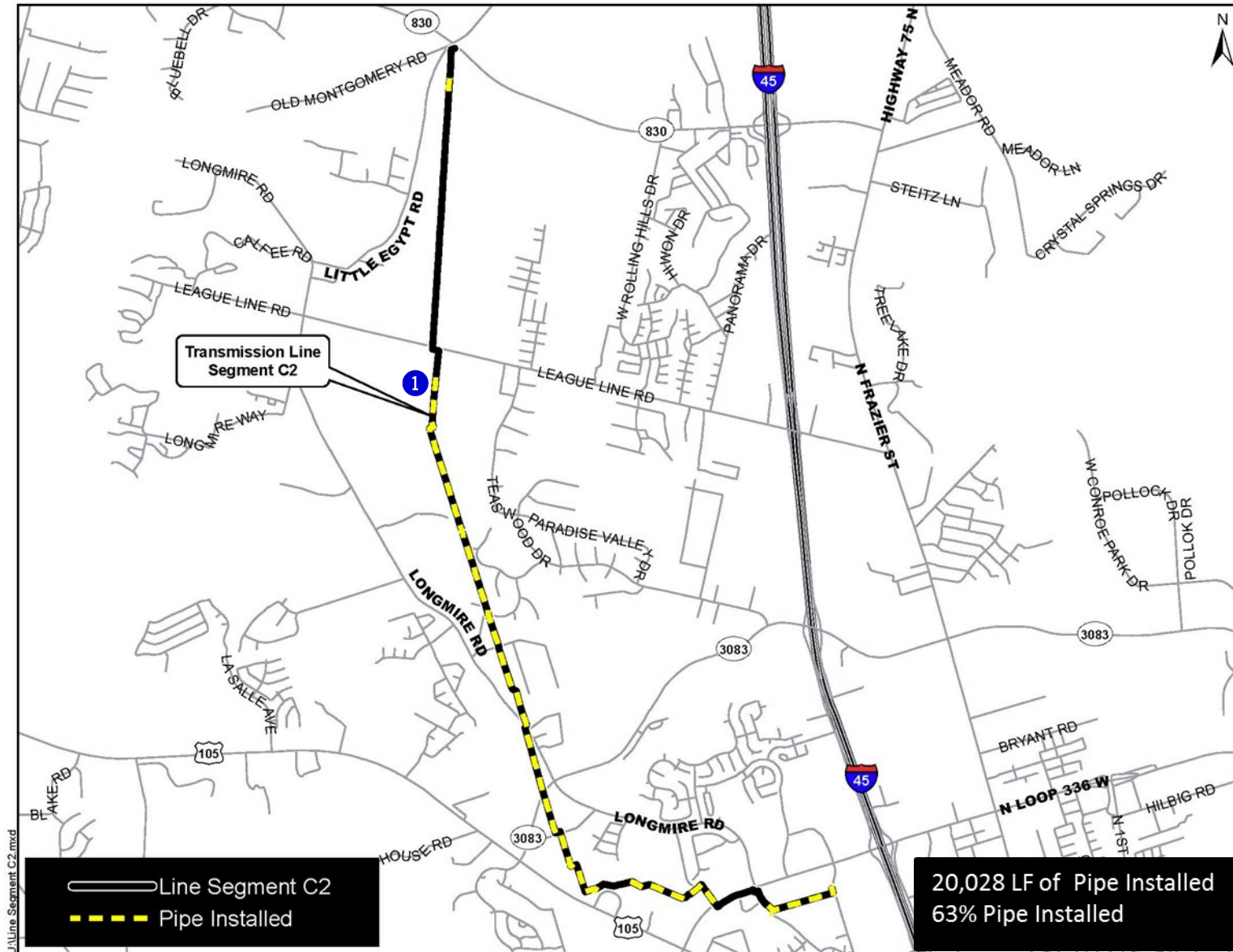


EXHIBIT 11 (con't) Transmission Line System Construction Photos



① *Segment C2— 36-inch open-cut pipe installation along Entergy corridor*

EXHIBIT 11 (con't) Transmission Line System Construction Photos

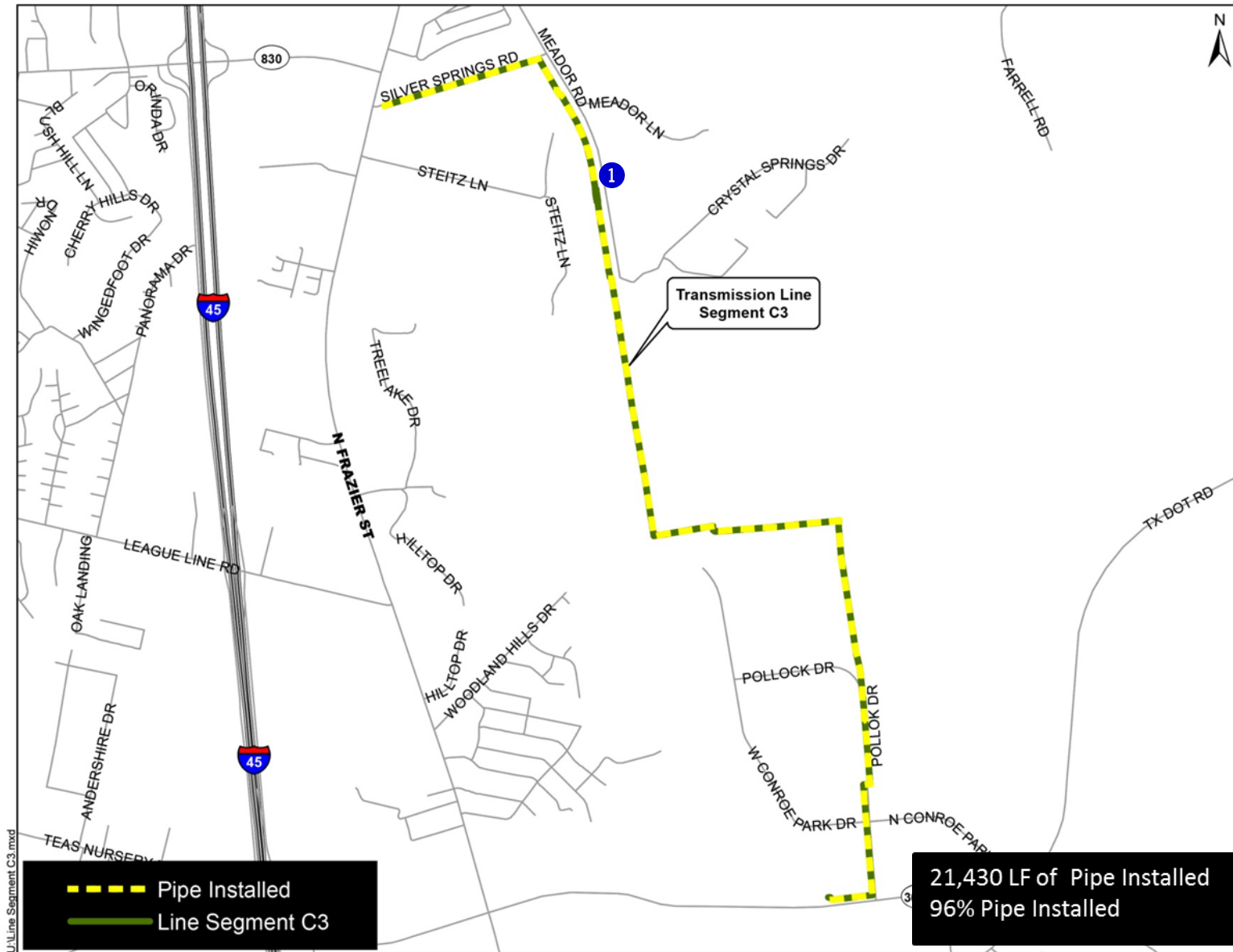


EXHIBIT 11 (con't) Transmission Line System Construction Photos



① *Segment C3— Air release and vacuum relief valves along Girl Scout property*

EXHIBIT 11 (con't) Transmission Line System Construction Photos

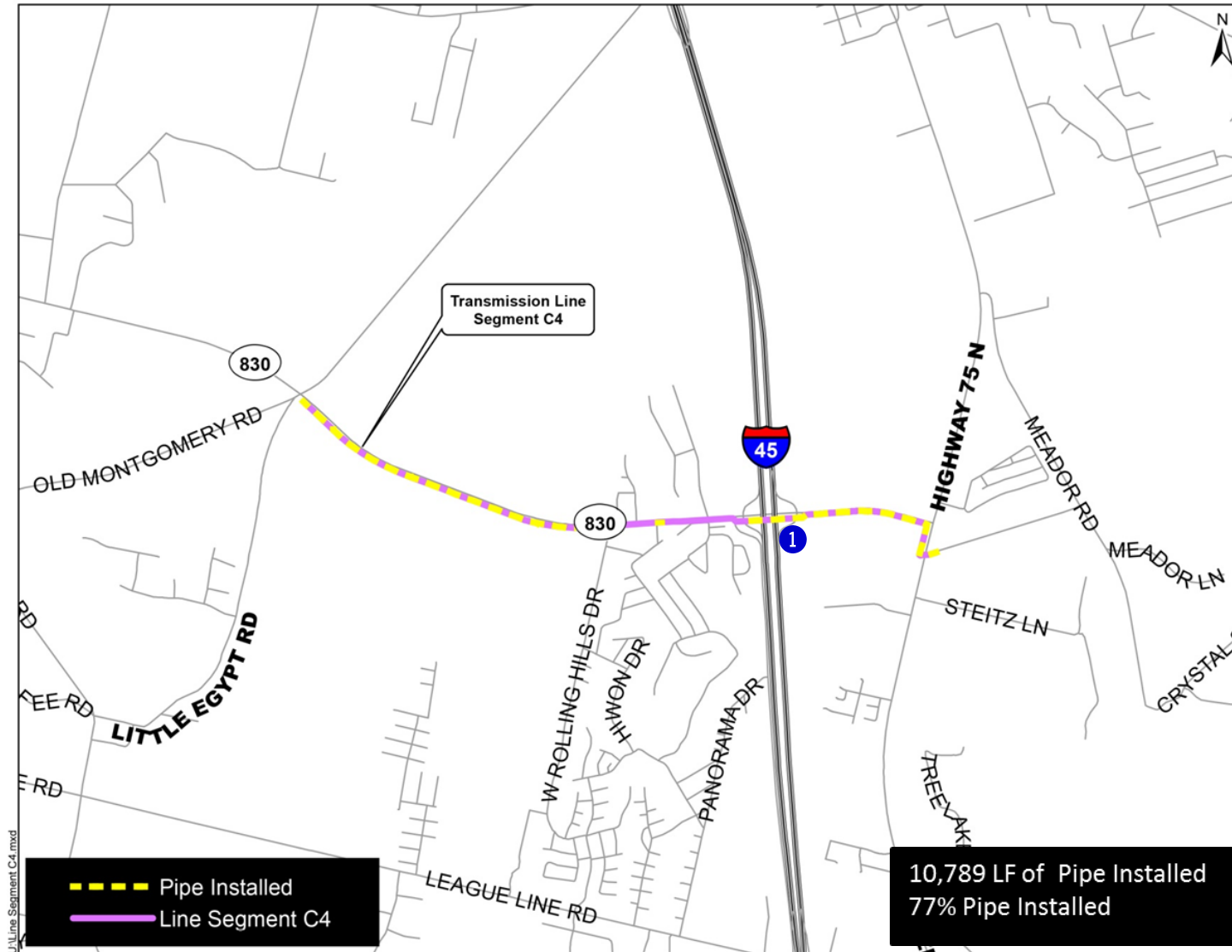


EXHIBIT 11 (con't) Transmission Line System Construction Photos



① *Segment C4—Site restoration along FM 830 at I-45*

EXHIBIT 11 (con't) Transmission Line System Construction Photos

WATER RECEIVING FACILITIES—NORTH

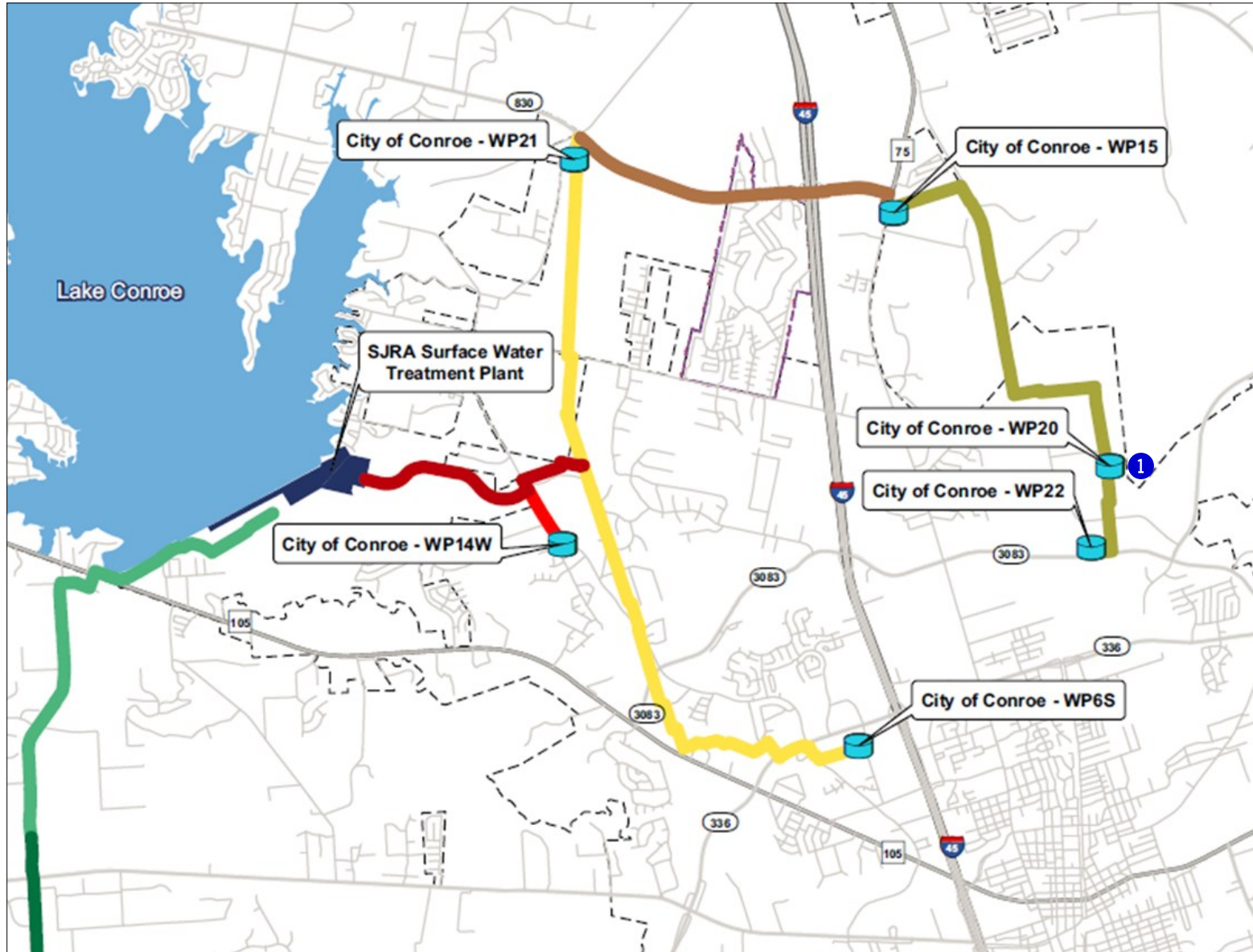


EXHIBIT 11 (con't) Transmission Line System Construction Photos



① *Surface Water Receiving Facility – North— Site restoration at Conroe Water Plant No. 20*

EXHIBIT 11 (con't) Transmission Line System Construction Photos

WATER RECEIVING FACILITIES—SOUTH

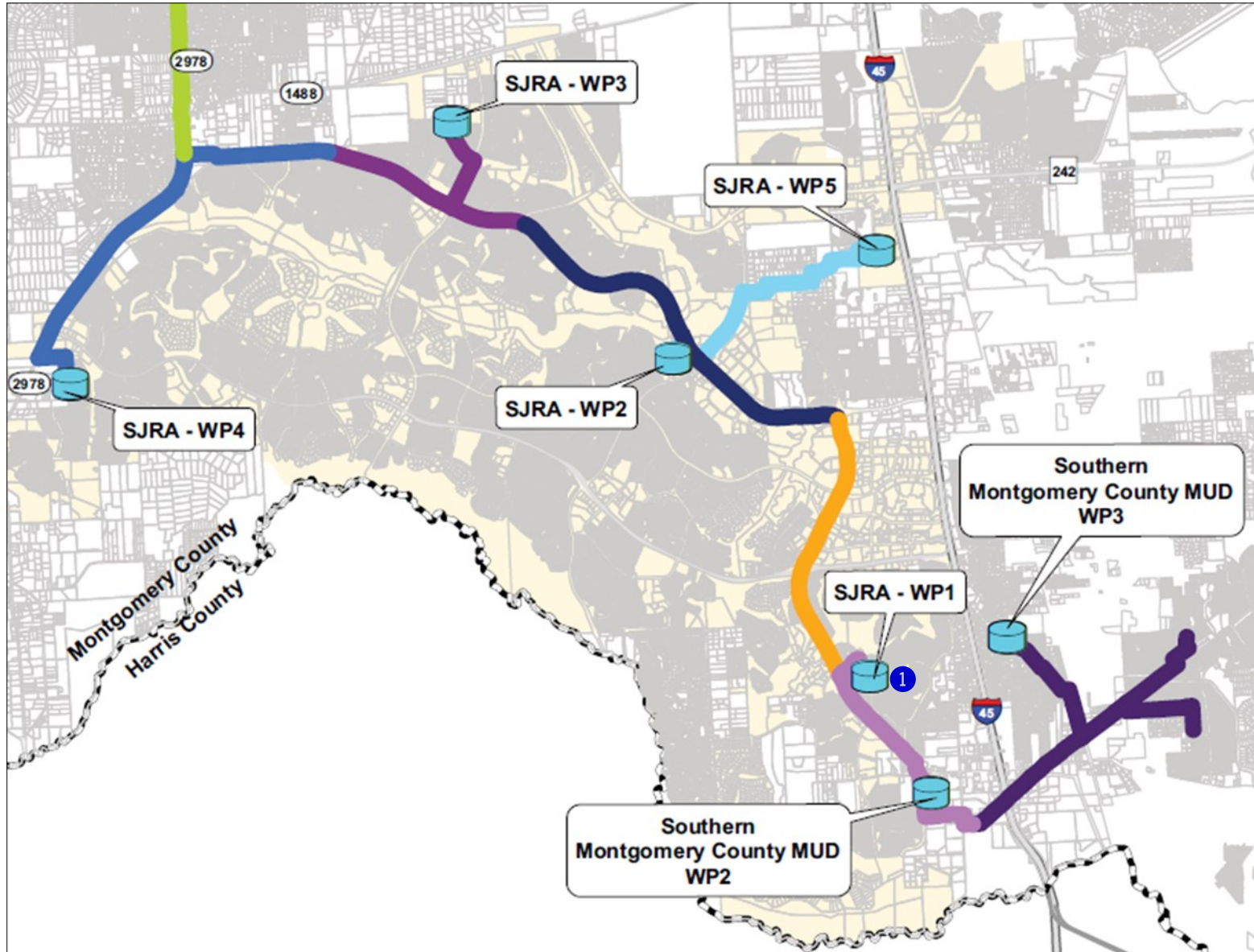


EXHIBIT 11 (con't) Surface Transmission System Line Construction Photos



① *Surface Water Receiving Facility – South — Flow Control Pressure Station at Woodlands Water Plant No. 1*

EXHIBIT 12 Surface Water Standpipe Construction Photos

Surface Water Standpipe

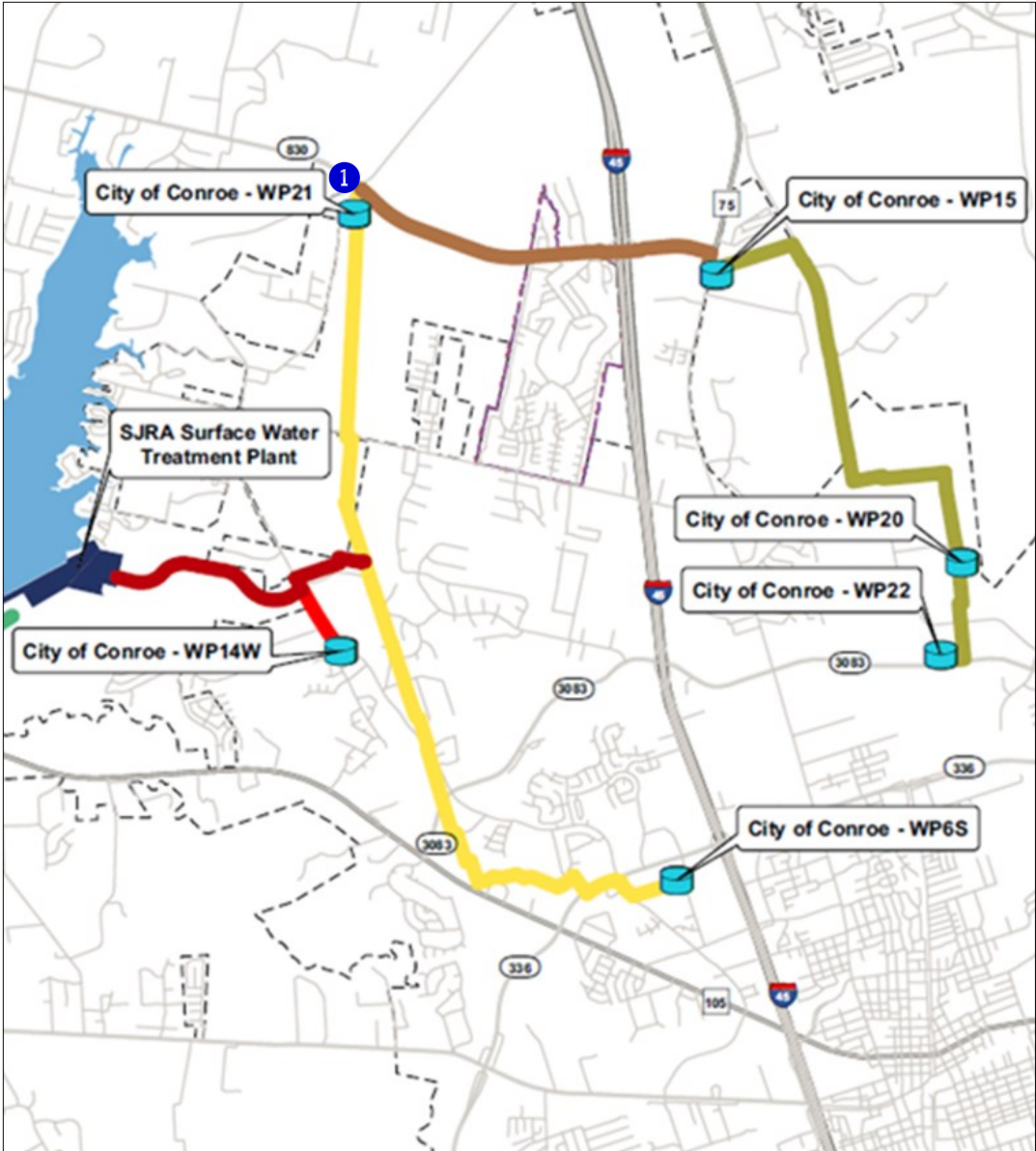


EXHIBIT 12 (con't) Surface Water Standpipe Construction Photos



① *Surface Water Standpipe—36-inch x 30-inch pipe reducer connections to Standpipe*

Fiber Optic Network Communication System Photos



EXHIBIT 13 Fiber Optic Network Communication System



Fiber optic cable stored materials

7.0 GRP PROGRAM EXTENSIONS

7.1 ENGINEERING

Design efforts are underway for the GRP Program Extension projects. Below is a summary of the of the extension projects through the month of September.

Transmission Segment W3C - Segment W3C includes approximately 6,900 linear feet of 12-inch pipe to be constructed east of and connecting to Segment W3B along the Kinder Morgan (Tennessee Gas) pipeline corridor east of I-45, to northward along Aldine Westfield Road to the Montgomery County MUD 99 Water Plant No. 1. The W3C 30% design drawings and the Preliminary Engineering Design Report (PER) was submitted in September for review.

MUD 99 Receiving Facilities — The 90% design drawings and specifications were submitted in September for review.

