



# GROUNDWATER REDUCTION PLAN PROGRAM

MONTHLY PROGRESS REPORT - MAY 2014





## TABLE OF CONTENTS

<b>Table of Contents</b>	1	3.3 Process and Procedures	11
<b>Acronyms and Definitions</b>	2	3.4 Look Ahead	11
<b>1.0 Planning</b>	3	<b>4.0 Cost Report and Financial Considerations</b>	12
1.1 Strategic	3	4.1 GRP Program and GRP Project CIP Budget(s)	12
1.2 Engineering and Construction	3	4.2 Financial Reports	12
1.3 Meetings	3	4.3 Invoices/Applications for Payment	12
<b>2.0 Project Activities</b>	4	4.4 Contract Amendments and Change Orders	13
2.1 Engineering	4	4.5 Claims	13
2.2 State Agency Coordination	4	4.6 CIP Cash Flow	13
2.3 Surface Water Transmission System Project Data	5	4.7 CIP Budget Estimates at Completion	13
2.4 Surface Water Transmission System Construction Progress	8	4.7.1 GRP Program	13
2.5 Surface Water Facility Construction Progress and Project Data	10	4.7.2 GRP Projects	13
<b>3.0 Procurement</b>	11	4.8 Land Acquisition	13
3.1 Solicitations	11	<b>5.0 Quality Assurance</b>	14
3.2 Contract Awards	11	5.1 Final Design	14
		5.2 Pre-Construction	14
		5.3 Construction	14
		<b>6.0 Exhibits</b>	15





# ACRONYMS AND DEFINITIONS

## ACRONYMS

<b>CA&amp;I</b>	Construction Administration and Inspection
<b>CCT</b>	Construction Communication Team
<b>CIP</b>	Capital Improvement Project
<b>CM&amp;I</b>	Construction Management and Inspection
<b>CMAR</b>	Construction Manager At Risk
<b>CMT</b>	Construction Materials Testing
<b>CSB / P</b>	Competitive Sealed Bid / Proposal
<b>EA</b>	Environmental Assessment
<b>EAC</b>	Estimate At Completion
<b>FONCS</b>	Fiber Optics Network Communication System
<b>GIS</b>	Geographic Information System
<b>GRP</b>	Groundwater Reduction Plan
<b>GST</b>	Groundwater Storage Tank
<b>HSPS</b>	High Speed Pump Station
<b>LSGCD</b>	Lone Star Groundwater Conservation District
<b>LVGU</b>	Large Volume Groundwater User
<b>NTP</b>	Notice To Proceed
<b>PER</b>	Preliminary Engineering Report
<b>PMP</b>	Program Management Plan
<b>PVC</b>	Polyvinyl Chloride
<b>PSA</b>	Professional Services Agreement
<b>QA</b>	Quality Assurance
<b>RCCP</b>	Reinforced Concrete Cylinder Pipe
<b>RFB / Q / P</b>	Request For Bids / Qualifications / Proposals
<b>RWI / RWPS</b>	Raw Water Intake / Raw Water Pump Station
<b>SJRA</b>	San Jacinto River Authority
<b>SOQ</b>	Statement of Qualifications
<b>SWF</b>	Surface Water Facilities (SWTP, HSPH and RWI)
<b>SWRF</b>	Surface Water Receiving Facilities
<b>SWTP</b>	Surface Water Treatment Plant
<b>TCEQ</b>	Texas Commission on Environmental Quality

## DEFINITIONS

<b>TWDB</b>	Texas Water Development Board
<b>TXDOT</b>	Texas Department of Transportation
<b>WIF</b>	Water Infrastructure Fund
<b>GROUNDWATER REDUCTION PLAN (GRP)</b>	The document developed and filed with the LSGCD indicating SJRA's plan to reduce the permitted 2009 groundwater pumpage of its GRP Participants by 30%. The GRP is administered by the SJRA, including any supplements, revisions, or amendments.
<b>GRP PROGRAM TEAM</b>	SJRA staff, Program Management Consultant (Brown & Gay Engineers, Inc.) staff, and technical consultants working interdependently toward meeting the goals of the Groundwater Reduction Plan.
<b>GRP ADMINISTRATOR</b>	The SJRA General Manager's designee who administers the SJRA Groundwater Reduction Plan and GRP Contract with GRP Participants.
<b>GRP CONTRACT</b>	Contract between the SJRA and a Participant to be included in the SJRA's efforts to meet the surface water conversion requirements mandated by the LSGCD.
<b>JOINT GRP</b>	GRP which is prepared to include (takes into account) LVGUs who have executed a GRP Contract with the SJRA to join the SJRA's GRP. Contracted LVGUs obtain LSGCD groundwater reduction regulation compliance through the SJRA's Joint GRP without preparing and submitting a GRP.
<b>LARGE VOLUME GROUNDWATER USER(s) (LVGU)</b>	Any person or entity that, through a single well or a combination of wells, actually produces or is authorized by permit(s) issued by the LSGCD to produce 10 million gallons or more of groundwater annually on or after January 1, 2008.
<b>PARTICIPANT(S)</b>	Regulated User(s) that enters into and remains subject to a written agreement with the SJRA to be included in the SJRA's GRP and includes the legal successors or assigns of Participant(s).
<b>REGULATED USER(S)</b>	Any public or private entity or person that is or becomes subject to the District Regulatory Plan established by the LSGCD and includes any amendments, revisions or supplements thereto as may be adopted by the LSGCD.
<b>SJRA GRP DIVISION</b>	Division of the SJRA responsible for GRP compliance, and the management, administration, operation and maintenance of the surface water facilities and surface water transmission system.





## 1.0 PLANNING

The GRP Program Team meets regularly for the purposes of setting performance expectations and goals of the GRP Program, identifying the efforts required to achieve these objectives, evaluating the effectiveness of such efforts, and modifying those efforts based upon both internal and external performance evaluations.

### 1.1 STRATEGIC

The month of May launched discussions regarding the planning and preparation efforts for the upcoming water quality campaign to be administered by the GRP team, in conjunction with the Public Relations Department. As delivery of surface water is slated to be delivered prior to January 1, 2016, the GRP team is working on assembling quality and concise information to distribute to all GRP participants and customers who will be receiving either surface water or a blend of groundwater and surface water. The campaign is scheduled to commence in December, 2014.

### 1.2 ENGINEERING AND CONSTRUCTION

All procurement services for construction proposals, with the exception of the permanent access road, have been completed and fifteen transmission line construction contracts have been awarded. The engineering consultants will continue to provide construction phase services by reviewing submittals and requests for information as work proceeds.

### 1.3 MEETINGS

Various meetings continued this month with the GRP Program Team. A listing of these meetings is attached as [Exhibit 9](#).



*Switchgear installation at the Power Supply Building at Surface Water Facility*



## 2.0 PROJECT ACTIVITIES

Currently, the GRP Program remains on schedule for the delivery of treated surface water to select Joint GRP Participants on or before January 1, 2016. A simplified GRP Program schedule can be found in attached [Exhibit 1](#).

### 2.1 ENGINEERING

#### [SURFACE WATER TRANSMISSION SYSTEM](#)

[Segments T1, T2, T3, W1A, W1B, W2A, W2B, W3A, W3B, W4, C1A, C1B, C2, C3, C4, Surface Water Receiving Facilities—North, Surface Water Receiving Facilities—South, Standpipe, and Fiber Optic Communications System](#) – Design is complete. Engineering consultant is providing construction phase services.

[Construction Management and Inspection \(CM&I\)](#) – The CM&I consultant provided management and inspection services for Transmission Segments T1, T2, T3, W1A, W1B, W2A, W2B, W3A, W3B, W4, C1A, C1B, C2, C3, C4, WRF-N, WRF-S, and the Standpipe.

[Construction Materials Testing Consultant \(CMT\)](#) - CMT consultant is currently working with CM&I staff to perform industry standard construction materials testing. Testing includes subgrade and backfill soil densities, compressive strengths, masonry and coatings.

#### [SURFACE WATER FACILITIES](#)

[Raw Water Intake Pump Station](#) – Design is complete. Engineering consultant is providing construction phase services.

[Surface Water Treatment Plant](#) – Design is complete. Engineering consultant is providing construction phase services.

[High Service Pump Station and Ground Storage Tanks](#) – Design is complete. Engineering consultant is providing construction phase services.

[Construction Administration and Inspection \(CA&I\)](#) – The CA&I consultant for the SWF is currently working with the CMAR and SJRA staff to review submittals and RFI's, and provide constant field monitoring and inspection of the systems being installed.

[Construction Materials Testing Consultant \(CMT\)](#) - The CMT consultant for the SWF is currently working with the CMAR and CA&I staff to perform in-

dustry standard construction materials testing. Testing includes soil densities, compressive strength/properties of concrete placed; and welding, coatings and masonry testing.

[Cathodic Protection](#) - The cathodic protection consultant has completed their design effort for both the transmission line segments and the Surface Water Facilities and is providing construction phase services.

### 2.2 STATE AGENCY COORDINATION

This month SJRA received approvals from the Texas Water Development Board (TWDB) for previously submitted Change Orders for Transmission System Line Segments T2 and T3, and the Water Receiving Facilities North and South. Also, coordination with the TWDB commenced for Change Orders regarding Transmission System Line Segments W1A and W4.



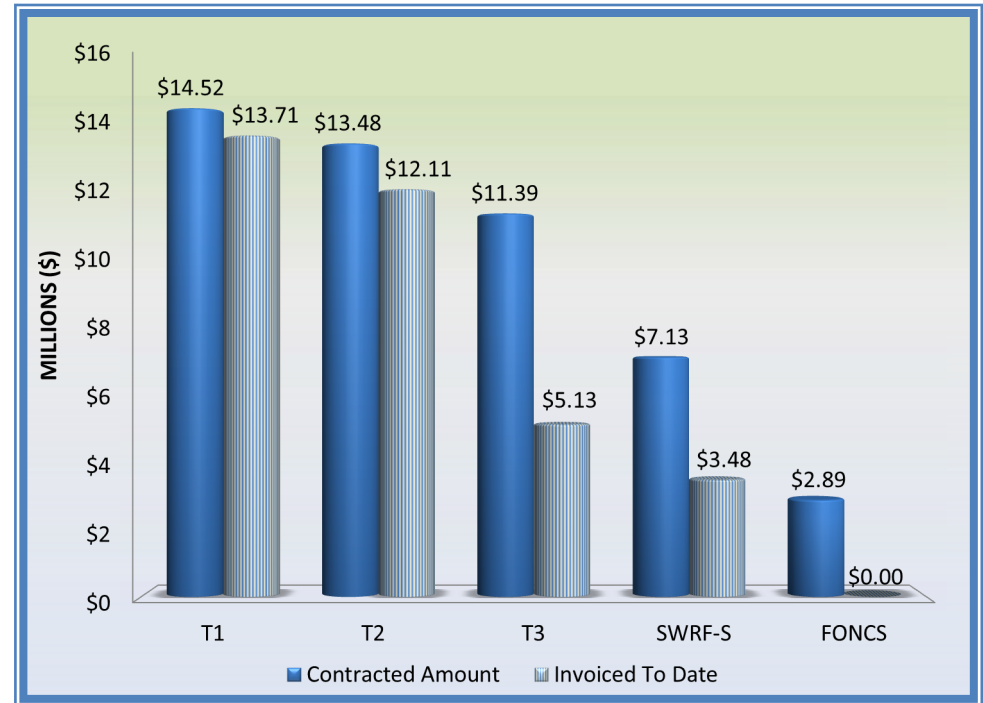
*Column support outside of the Blower Building at Surface Water Facility*



## 2.0 PROJECT ACTIVITIES (CONTINUED)

### 2.3 SURFACE WATER TRANSMISSION SYSTEM PROJECT DATA

The month of May concluded with the installation of approximately 171,518 feet or 32.5 miles of various sized concrete coated steel pipe and PVC pipe along the majority of the transmission line segments. This represents approximately 63% of the total planned pipe to be installed throughout Montgomery County by or before January 1, 2016. The following graphs and charts show the progress of Transmission Line Segments T1, T2, T3, W1A, W1B, W2A, W2B, W3A, W3B, W4, C1A, C1B, C2, C3, C4, Surface Water Transmission North Water Receiving Facilities (SWRF-N), Surface Water Transmission South Water Receiving Facilities (SWRF-S), Standpipe and Fiber Optics Network Communication System (FONCS) thus far.



Surface Water Transmission System Total Progress To Date	
Total Contracted Amount	\$149,140,448.22
Total Invoiced To Date	\$89,324,276.30
Total % Complete Based on Invoice Amount	60%

Segment	T1	T2	T3	SWRF-S	FONCS
Contracted Amount	\$14,521,937.14	\$13,475,718.33	\$11,393,193.97	\$7,127,383.00	\$2,885,432.35
Invoiced To Date	\$13,709,649.14	\$12,112,111.02	\$5,129,804.95	\$3,481,905.58	\$0.00
% Complete	94%	90%	45%	49%	0%

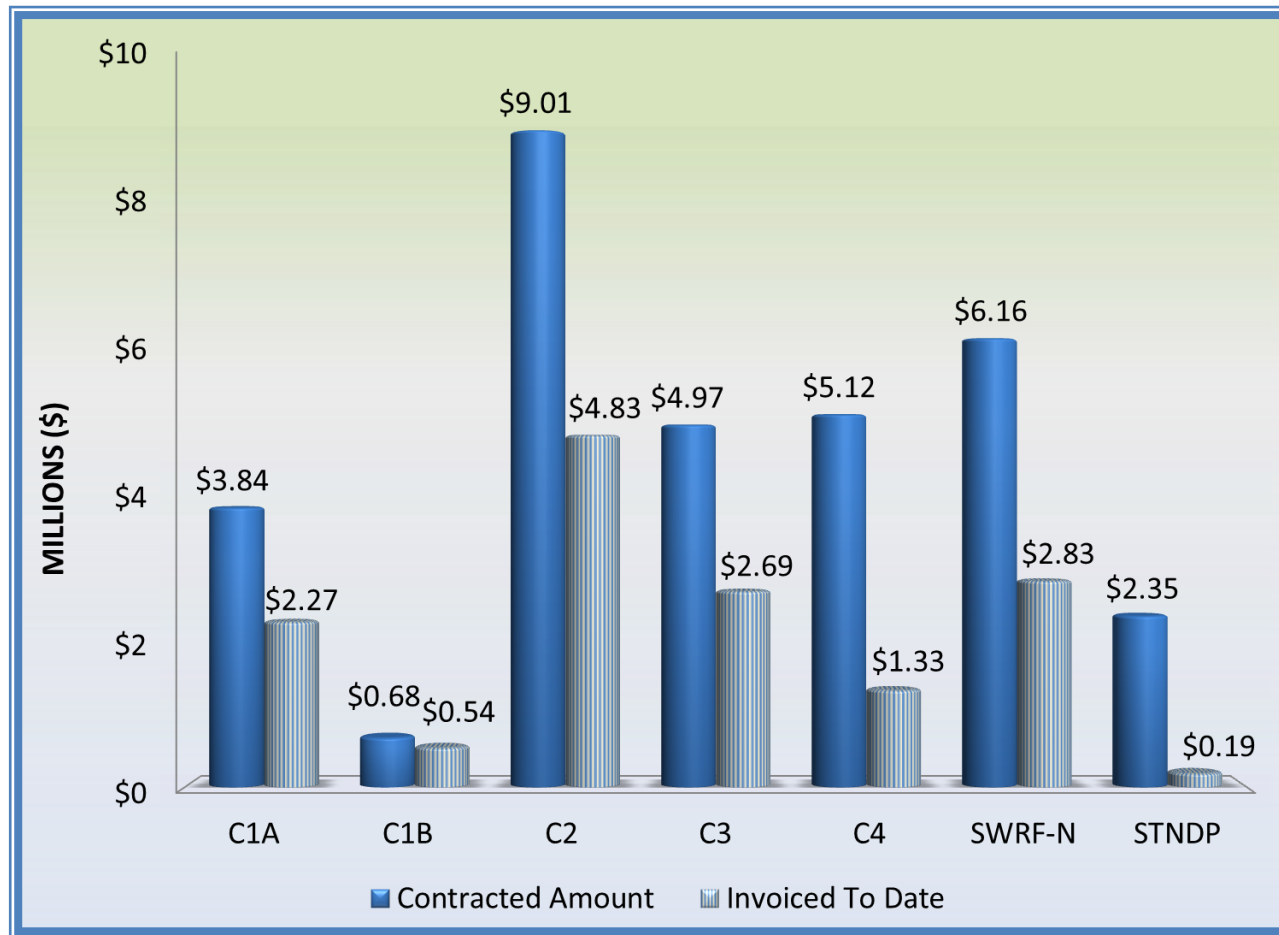
## 2.0 PROJECT ACTIVITIES (CONTINUED)



Segment	W1A	W1B	W2A	W2B	W3A	W3B	W4
Contracted Amount	\$8,222,000.50	\$7,213,544.50	\$16,340,258.02	\$16,161,600.00	\$7,880,207.50	\$8,124,485.50	\$3,656,604.23
Invoiced To Date	\$6,439,947.82	\$6,404,444.66	\$9,824,567.10	\$12,806,238.26	\$27,100.00	\$1,676,160.99	\$3,021,043.91
% Complete	78%	89%	60%	79%	1%	21%	83%



## 2.0 PROJECT ACTIVITIES (CONTINUED)



Segment	C1A	C1B	C2	C3	C4	SWRF-N	STANDPIPE
Contracted Amount	\$3,837,683.40	\$683,491.53	\$9,014,837.00	\$4,972,314.80	\$5,115,396.90	\$6,160,184.55	\$2,354,175.00
Invoiced To Date	\$2,269,744.33	\$543,443.60	\$4,829,347.70	\$2,689,733.85	\$1,333,328.76	\$2,833,037.83	\$192,666.80
% Complete	59%	80%	54%	54%	26%	46%	8%

## 2.0 PROJECT ACTIVITIES (CONTINUED)

### 2.4 SURFACE WATER TRANSMISSION SYSTEM CONSTRUCTION PROGRESS

Significant progress continues to be made each month with regard to pipe installation on each of the fifteen Surface Water Transmission Line Segments. The chart below represents the overall pipe installation statistics through the month of May.

Transmission Line System Pipe Installation Statistics to Date	
Total Piping Installed to Date	32.5 miles
Total % of Pipe Installed to Date	63%

**Segment T1** - Contractor completed open-cut installation of 60-inch concrete coated steel pipe, installation of fiber optic conduit, asphalt replacement, and site restoration along McCaleb Road. Approximately 20,514 feet of 60-inch concrete coated steel pipe has been installed through this month. (See Exhibit 11, Page 41)

**Segment T2** - Contractor completed open-cut installation of 54-inch concrete coated steel pipe and fiber optic conduit installation. Site restoration continues along Fish Creek Thoroughfare. Approximately 23,475 feet of concrete coated steel pipe has been installed through this month. (See Exhibit 11, Page 43)

**Segment T3** - Contractor continued utility coordination along Fish Creek Thoroughfare. Approximately 9,995 feet of 54-inch concrete coated steel pipe along Fish Creek Thoroughfare has been installed through this month. (See Exhibit 11, Page 45)

**Segment W1A** - Contractor continued tunneling and open-cut installation of 48-inch concrete coated steel pipe and fiber optic conduit along Research Forest Drive. Concrete pavement restoration began along Research Forest Drive. Approximately 22,715 feet of 48-inch concrete coated steel and 16-inch PVC pipe has been installed through this month. (See Exhibit 11, Page 47)

**Segment W1B** - Contractor completed open-cut installation of 42-inch concrete coated steel pipe, installation of fiber optic conduit, and asphalt shoulder installation along Research Forest Drive. Hydrostatic pressure testing of waterline segment began. Approximately 17,149 feet of 48-inch and 42-inch concrete coated steel pipe and 20-inch and 16-inch PVC pipe has been installed through this month. (See Exhibit 11, Page 49)

**Segment W2A** - Contractor continued installation of 42-inch concrete coated steel pipe along Research Forest Drive. Approximately 12,629 feet of 42-inch concrete coated steel pipe and 30-inch and 20-inch PVC pipe has been installed through this month. (See Exhibit 11, Page 51)

**Segment W2B** - Contractor continued open-cut and trenchless installation of 30-inch PVC pipe, and completed concrete pavement restoration from Research Forest Drive to Woodlands Parkway and from Woodlands Parkway to South Millbend. Traffic switch over was completed along Grogan's Mill Road. Approximately 13,276 feet of 30-inch PVC pipe has been installed through this month. (See Exhibit 11, Page 53)

**Segment W3A** - Contractor continued submittal process, surveying, and tree clearing work. Installation of traffic switch over lanes continued. No pipe has been installed as of this month.

**Segment W3B** - Contractor continued trenchless installation of 16-inch PVC pipe along Montgomery County Drainage District No. 6 right-of-way and Kinder Morgan easement. Approximately 1,403 feet of 16-inch PVC pipe has been installed through this month. (See Exhibit 11, Page 55)

**Segment W4** - Contractor completed 20-inch PVC pipe fusing and directional drilling operations and trenchless installation of 20-inch PVC pipe. Fiber optic conduit installation continued. Approximately 13,090 feet of 20-inch PVC pipe has been installed through this month. (See Exhibit 11, Page 57)





## 2.0 PROJECT ACTIVITIES (CONTINUED)

**Segment C1A** - Contractor began installation of 42-inch bar wrapped concrete mortar pipe along GRP Access Road. Approximately 4,447 feet of 42-inch wrapped concrete mortar pipe has been installed through this month. (See Exhibit 11, Page 59)

**Segment C1B** - Contractor completed installation of fiber optic conduit and groundboxes, and completed hydrostatic testing, disinfection, and flushing along Longmire Road. Contractor received Certificate of Substantial Completion. 100% pipe installation totaling 2,452 feet of 16-inch PVC pipe was completed in February. (See Exhibit 11, Page 61)

**Segment C2** - Contractor continued installation of 30-inch concrete coated steel pipe and fiber optic conduit along Entergy easement and continued installation of 36-inch concrete coated steel pipe. Approximately 15,738 feet of 30-inch concrete coated steel pipe, 16-inch and 12-inch PVC pipe has been installed through this month. (See Exhibit 11, Page 62)

**Segment C3** - Contractor completed open-cut installation of 20-inch PVC pipe and 16-inch PVC pipe and fiber optic conduit along Pollok Drive and FM 3083. Contractor completed tree clearing, surveying and installation of chain-link fence along Silver Springs Road adjacent to Girl Scouts and UPRR properties. Approximately 10,494 feet of 20-inch and 16-inch PVC pipe has been installed through this month. (See Exhibit 11, Page 64)

**Segment C4** - Contractor continued installation of open cut installation of 24-inch PVC pipe along FM 830. Approximately 4,141 feet of 24-inch and 20-inch PVC pipe has been installed through this month. (See Exhibit 11, Page 66)

**Fiber Optic Communications System** - Contractor continued initial critical submittals, ordering fiber optic cable and coordination efforts.

**Standpipe** - Contractor continued to mobilize equipment, receive construction materials and began excavation and placement of mud slab and placement of formwork for the concrete foundation. Standpipe construction is approximately 5% complete. (See Exhibit 12, Page 72)



*Raw Water Intake Pump Station plant piping at Surface Water Facilities*

## 2.0 PROJECT ACTIVITIES (CONTINUED)



*Membrane installation at the Membrane Building at Surface Water Facility*

### SURFACE WATER RECEIVING FACILITIES

**Surface Water Receiving Facilities—North** - Contractor continued surface water piping at various receiving facilities, completed GST modifications, disinfection and cleaning at Conroe Water Plant Nos. 15 and 21. Installation of Chlorine Injection Buildings at Conroe Water Plant Nos., 14, 20, and 21 was completed. Installation of the Distribution Flow Meter Assembly at Conroe Water Plant Nos. 15 and 22 began. (See Exhibit 11, Page 68)

**Surface Water Receiving Facilities—South** - Contractor continued installation of storm sewer facilities at various receiving facilities, GST modifications, disinfection and cleaning at SJRA Water Plant Nos. 2 and 4. Contractor set precast concrete electrical buildings at SJRA Water Plant Nos. 3 and 4 and began installation of surface water piping at Southern Montgomery County MUD No. 2. (See Exhibit 11, Page 70)

### 2.5 SURFACE WATER FACILITY CONSTRUCTION PROGRESS AND PROJECT DATA

**Raw Water Intake** - The contractor completed the installation of Raw Water Pump (RWP) 02 and 03 barrels, appurtenances, and slide gates. Installation of RWP discharge pipe supports began. The contractor continued installation of the roof deck; HVAC duct in the Electrical and Mechanical Equipment area; and supports and conduit for power, lighting, and instruments in the Pump and Mechanical Rooms.

**Surface Water Treatment Plant** - Construction activities continue at the Operations, Chemical, Power Supply, Generator, Pretreatment, Membrane, Backwash Equalization, Process Water Recovery Basin, Belt Filter Press Building, Blower Building, and GAC facilities. Electrical power, data, and lighting conduit installation continues at the structures. Structural concrete placement, lightweight concrete roof topping placement, roofing, structure decking, and masonry are the main activities still occurring on the site this month. Process piping installation continues at the GAC. Mechanical and plumbing continue in the Membrane Operations Building and in the Belt Filter Press Building.

**High Service Pump Station** - Installation continues for the discharge bay piping and grating. Also continuing is the installation of electrical conduit and cable support, HVAC, plumbing, and cathodic protection.

**Ground Storage Tanks** - No major work occurred at the Ground Storage Tanks this month.

**Site Work** - Large diameter yard piping, potable water piping, sanitary sewer, manholes, junction boxes, and drain line installation continue to progress. Electrical duct bank installation and encasement continue.

Name of Project	Contracted Amount	Invoiced To Date	% Complete Based on Invoice Amount
Surface Water Facilities	\$190,704,740	\$119,724,940.00	63%



## 3.0 PROCUREMENT

### 3.1 SOLICITATIONS

No advertisements for solicitations occurred this month.

### 3.2 CONTRACTS/AGREEMENTS/WORK ORDER APPROVALS

- Acquisition of Computer Maintenance Management System
- Work Order No. 9 for Population of CMMS and development of an Electronic Operations Manual for Raw Water Intake and Pump Station
- Work Order No. 18 for Population of CMMS and development of an Electronic Operations Manual for Water Treatment Plant
- Work Order No. 15 for Population of CMMS an development of an Electronic Operations Manual for High Service Pump Station and Ground Storage Facilities
- Professional Services Agreement and Work Order No. 1 for design of Instrumentation and Controls for Segment W3C Receiving Facility

### 3.3 PROCESS AND PROCEDURES

The GRP Program will utilize traditional procurement methods for consultant services and alternative project delivery methods in the procurement of contractor services, if those services are required.

### 3.4 LOOK AHEAD

The following list provides a very general look ahead at known and anticipated GRP Program professional services and construction contractor solicitations, contract awards, agreements, and/or contract/work order amendments. Solicitations may be combined, modified, or canceled, or time frames may be modified as deemed necessary.

- Professional Services Agreement and Work Order No. 1 for Corrosion Protection for Transmission Segment W3C
- Supplemental Agreement to GRP Contract with City of Conroe
- Supplemental Agreement to GRP Contract with Southern Montgomery County MUD



*Conduit at the Raw Water Intake Pump Station at Surface Water Facility*

## 4.0 COST REPORT AND FINANCIAL CONSIDERATIONS

### 4.1 GRP PROGRAM AND GRP PROJECT CIP BUDGET(S)

Through this month the GRP Program remains under its construction cost estimate of \$500,000,000, and forecasts continue to indicate it will be completed under budget (see also subsection 4.6 and [Exhibit 2](#)). A summary of the GRP Program's CIP budget and cost considerations as reported to the GRP Review Committee and the SJRA Board of Directors is provided as attached [Exhibit 2](#).

A summary of the SJRA GRP Division's Fiscal Year 2014 operating budget (revenue and expenditures) for the month of May is provided as [Exhibit 8](#). The budget includes all normal and customary expenses for operating a utility-based, non-profit business, including debt service, and is developed annually for approval by the SJRA Board of Directors.

The SJRA Board of Directors has authorized bond funding for the GRP Program in the amount of \$552,250,358.49 (Net \$479,743,492.79); see also [Exhibit 4](#). This funding allows the SJRA to secure all of the resources required to perform professional services, construction services, and procure long lead time equipment during the design phase of the GRP Program.

### 4.2 FINANCIAL REPORTS

[Exhibit 5](#) illustrates the funding sources presently applied towards the GRP Program CIP budget.

- 1.) Texas Water Development Board's (TWDB) Water Infrastructure Fund (WIF);
- 2.) The sale of open market Special Project Revenue Bonds, Series 2011
- 3.) TWDB Dfund, Series 2011A
- 4.) TWDB Dfund, Series 2012
- 5.) TWDB Dfund, Series 2012A
- 6.) TWDB Dfund, Series 2013
- 7.) Operating Cash

Contracted commitments are summarized below in Table 4.1 for the month of May. The GRP Program's funding and forecasted expenditures are further detailed in attached [Exhibits 2, 3 and 4](#).

Please note that financial reports do not include investment income.

### 4.3 INVOICES/APPLICATIONS FOR PAYMENT

The table below represents the GRP Program Consultant Invoices and/or Construction Contractor Applications for Payment paid through the end of the report month (Item F).

Table 4.1 - GRP Program Funding and Contracted Commitments Summary			
	Previous 4/30/2014	May 2014 Activity	Year to Date (Thru 5/31/14)
<b>A. Approved Funding</b>	552,337,227.71	2,629.07	552,339,856.78
<b>B. Available Funding After Costs</b>	479,832,891.09	2,629.07	479,835,520.16
<b>C. Approved Contracts</b>			
Phase I	463,722,357.31	1,338,816.07	465,061,173.38
Extensions	714,926.00	36,843.00	751,769.00
<b>D. Project Close Out</b>			
Phase I	(807,947.07)	0	(807,947.07)
Extensions	0	0	0
<b>E. Uncontracted Funding</b>	16,203,554.85	(1,373,030.00)	14,830,524.85
<b>F. Invoices Paid *</b>			
Phase I	245,774,550.08	25,551,651.01	271,326,201.09
Extensions	0	6,849.80	6,849.80
<b>G. Remaining Funds *</b>	234,058,341.01	(25,555,871.74)	208,502,469.27

\*Invoices Paid -Figures reflect actual funds paid out as of period end dates noted.

\*Remaining Funds-Excludes net investment income



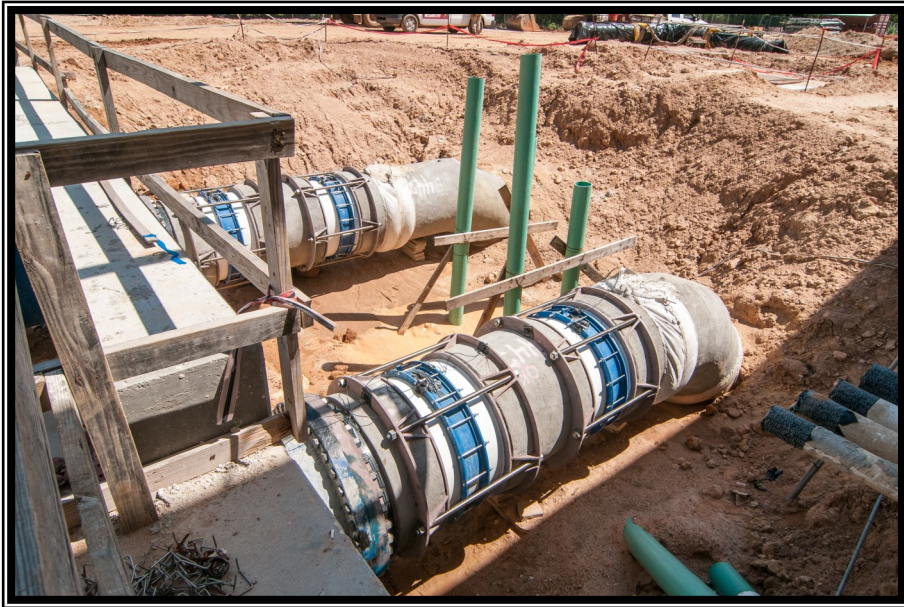


## 4.0 COST REPORT AND FINANCIAL CONSIDERATIONS (CONTINUED)

### 4.4 CONTRACT AMENDMENTS AND CHANGE ORDERS

Each of the GRP Program contracts, agreements and work orders listed in Section 3.2 were presented at the GRP Review Committee and the SJRA Board of Directors meetings this month. The following items were authorized by the SJRA Board of Directors for execution by the SJRA General Manager.

- Change Order No. 3 to Standard Construction Contract for Transmission Segment T3
- Amendment No. 1 to Work Order No. 1 for HMI development and implementation for GRP.



*Discharge piping at High Service Pump Station at Surface Water Facility*

### 4.5 CLAIMS

If and when claims are received, they will be addressed by the GRP Program Team.

### 4.6 CIP CASH FLOW

The GRP Program CIP cash flow through calendar year 2015 reflects known expenditures through this month as seen in Table 4.1. Estimates for future expenditures are included in [Exhibit 2](#). All active and currently identified future GRP Program projects and initiatives are included in the cash flow. A graph of forecasted monthly expenditures from the referenced cash flow is attached as [Exhibit 3](#).

### 4.7 CIP BUDGET ESTIMATES AT COMPLETION

#### 4.7.1 GRP Program

The **total gross funds** (including capitalized interest) required to execute Phase I of the GRP Program are currently estimated at \$564,335,358.49. Additionally, all current GRP Program contracts, including their respective SJRA Board of Director's approved budgeted amounts are listed in [Exhibit 6](#).

#### 4.7.2 GRP Projects

The GRP Program projects remained within their approved contract budgets this month. [Exhibit 6](#) indicates each active GRP Program project and GRP Program contract.

### 4.8 LAND ACQUISITION

The GRP Program Team, with the support of its various land acquisition consultants, are in the final stages of acquiring land and easements necessary for the surface water transmission system. A total of fifteen easements involving three property owners still remain to be finalized. Negotiations to acquire the remaining easements are at or near final stages of completion. A cumulative summary of easement acquisition activity is provided in [Exhibit 7](#).

## 5.0 QUALITY ASSURANCE

### 5.1 FINAL DESIGN

Final design is complete for Surface Water Treatment Plant, Transmission Lines, Standpipe, Fiber Optic Communications Network, and Water Receiving Facilities. Design of permanent access road is underway and the site landscaping will occur in the future.

### 5.2 PRE-CONSTRUCTION

There were no pre-construction meetings held this month.



*Above: View of Blower Building at Surface Water Facility*

*Right: View of construction progress at the Finished Water Process Structures*

### 5.3 CONSTRUCTION

Quality Assurance efforts by SJRA construction inspectors, as well as the CA&I consultant continued this month on the SWF project. Virtually every building on the SWF project site is progressing timely toward meeting the established SWF substantial completion date. Quality Assurance efforts include regular visits to the project site to monitor and document observed progress. Similar Quality Assurance efforts by SJRA construction inspectors and the CM&I consultant continued this month on the transmission lines.





## **6.0 EXHIBITS**

**Exhibit 1** - GRP Program Schedule

**Exhibit 2** - GRP Program Estimate-At-Completion

**Exhibit 3** - GRP Program Monthly Forecasted Expenditures

**Exhibit 4** - GRP Program Fund Data

**Exhibit 5** - Monthly GRP Program Funding Report

**Exhibit 6** - GRP Program Current Authorizations

**Exhibit 7** - Land Acquisition Summary

**Exhibit 8** - GRP Schedule of Revenues & Expenses—Actual & Budget

**Exhibit 9** - GRP Program Monthly Meeting Log

**Exhibit 10** - Surface Water Facilities (SWF) Construction Photos

**Exhibit 11** - Transmission Line System Construction Photos

**Exhibit 12** - Surface Water Standpipe Construction Photos

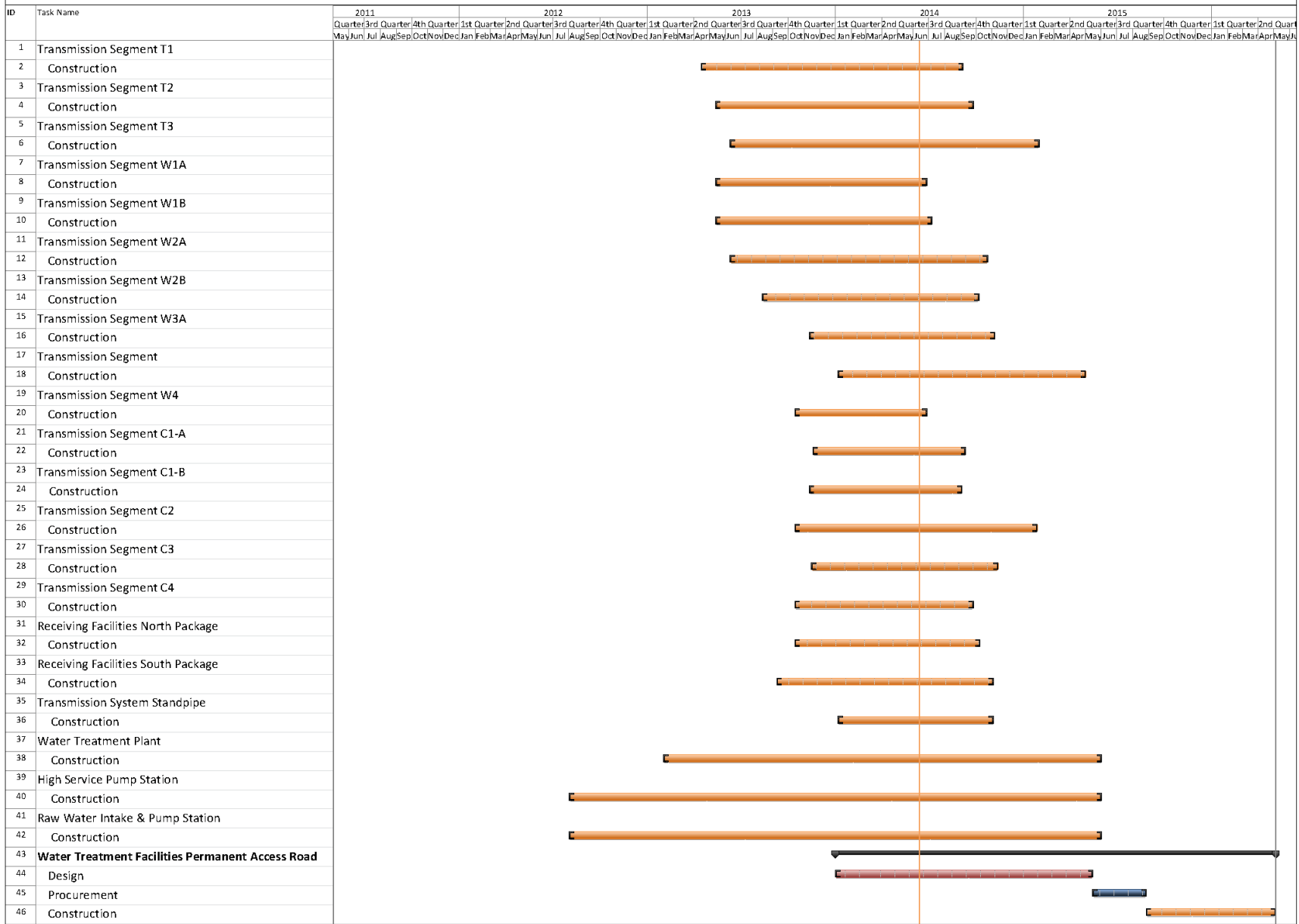
**Exhibit 13** - Fiber Optic Network Communication System Photos



*Chemical tanks at Chemical Storage Building at Surface Water Facilities*



## Exhibit 1 - GRP Program Schedule



Page 1



## Exhibit 2

### GRP Program Estimate-At-Completion As of May 31, 2014

SERVICES	ESTIMATE-AT-COMPLETION	
<b>Pre-Engineering Phase Services</b>	\$	<b>4,702,612</b>
(GRP Development, Environmental Studies, Pilot Plant, Surface Water Treatment Plant Site Survey)		
<b>Engineering Phase Services</b>	\$	<b>43,881,899</b>
(Planning, Preliminary Engineering, Final Engineering, Geotechnical, Survey, Metes & Bounds, Subsurface Utility Investigation, Environmental)		
<b>Construction Phase Services</b>	\$	<b>28,824,257</b>
(Engineering Services During Construction, Construction Management & Inspection [Transmission System], Construction Administration & Inspection [SWF], Material Testing)		
<b>Construction</b>	\$	<b>388,294,571</b>
(Surface Water Transmission System, Raw Water Intake and Pump Station, Surface Water Treatment Plant, High Service Pump Station and Ground Storage Tanks, Surface Water Receiving Facilities, Infrastructure, Buildings, Roadways, Site Security, Access Roadways)		
Transmission Segment C1 - Construction	\$	4,555,350
Transmission Segment C2 - Construction	\$	9,114,837
Transmission Segment C3 - Construction	\$	5,220,931
Transmission Segment C4 - Construction	\$	5,371,167
Transmission Segment T1 - Construction	\$	14,884,986
Transmission Segment T2 - Construction	\$	13,575,718
Transmission Segment T3 - Construction	\$	11,393,194
Transmission Segment W1 - Construction	\$	15,435,545
Transmission Segment W2 - Construction	\$	33,101,858
Transmission Segment W3 - Construction	\$	16,804,928
Transmission Segment W4 - Construction	\$	3,656,604
Transmission System Standpipe	\$	2,471,884
Receiving Facilities - Construction	\$	16,397,714
Surface Water Facilities CMAR (GMP)	\$	190,704,740
Transmission System Fiber Optic - Construction	\$	3,029,704
Permanent Access Roadway Construction	\$	7,505,000
Building No. 1; Access Road; Vegetative Buffer; Construction Materials Testing; SWF Site Vegetation Management; Sanitary Sewer/Access Rd. Relocation	\$	4,399,773
Other Offsite Construction (Transmission Line Utility Relocations, Receiving Facility Improvements)	\$	25,072,420
Non-Project Specific Contingency	\$	5,598,219
<b>Program Management</b>	\$	<b>10,940,954</b>
(GRP Program Management, Survey, Geotechnical, Transient, Corrosion, Legal Consultants)		
<b>Land Acquisition</b>	\$	<b>13,858,302</b>
(Legal, Appraisal, Title Research, Land Acquisition Consultants) <sup>(1)</sup>		
<b>Total <sup>(2)</sup>:</b>	<b>\$</b>	<b>490,502,595</b>

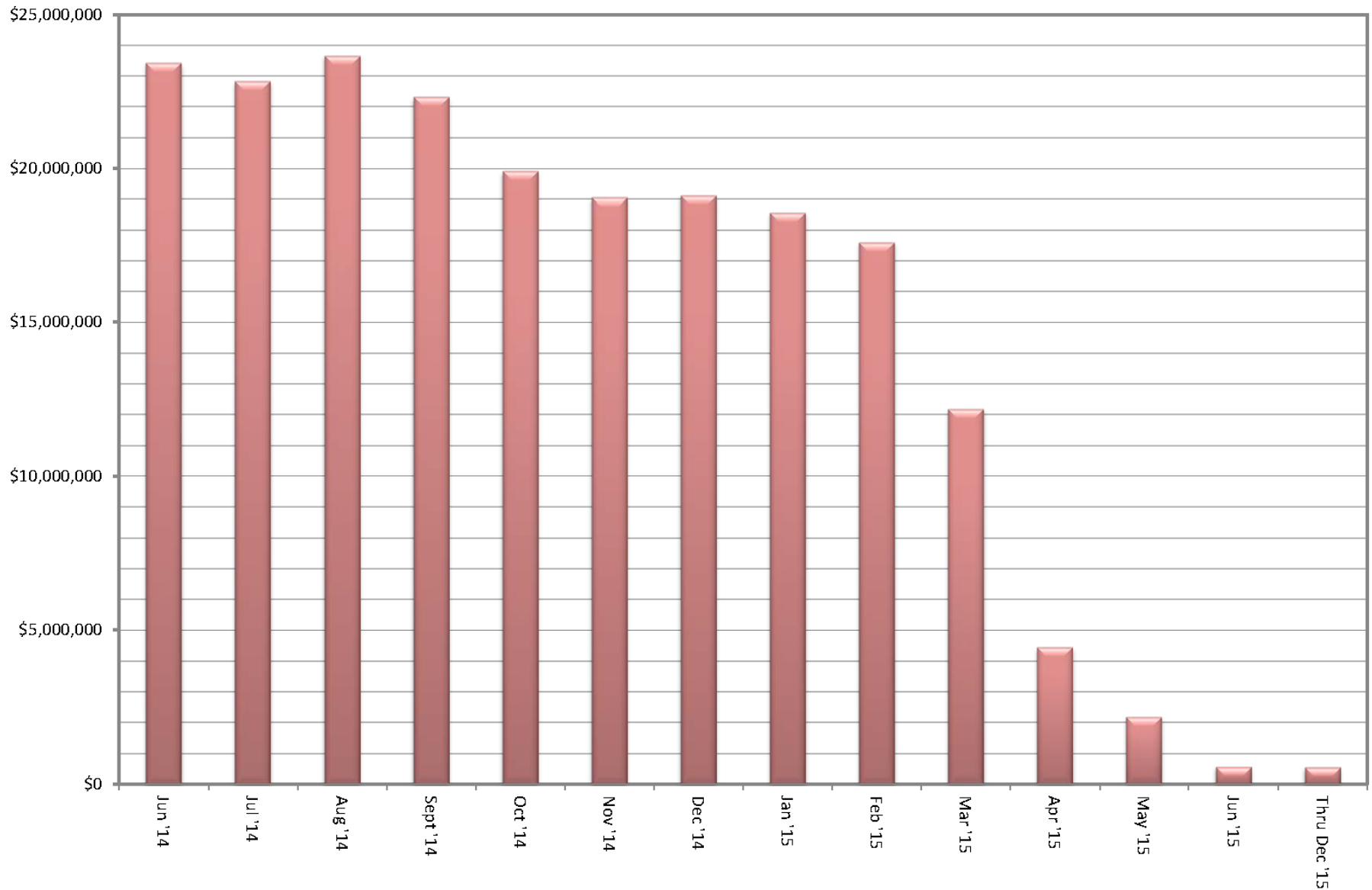
<sup>(1)</sup> Includes revisions to land acquisition cost estimates, land cost, and recategorizing of contingency.

<sup>(2)</sup> Bond issuance costs are not included.



### Exhibit 3

## GRP Program Monthly Forecasted Expenditures As of May 31, 2014





## Exhibit 4

### GRP Program Fund Data As of May 31, 2014

Funding Source	Amount Authorized by Board To-Date	Interest Rate	Bond Costs	Capitalized Interest	Debt Service Reserve Fund	Net Amount Currently Available	Pending Funding Source
TWDB WIF Bond Issue	\$ 21,500,000.00	.854% - 2.706%	\$ 470,337.08	\$ -	\$ -	\$ 21,029,662.92	
Open Market Bond Issue (Series 2011)	\$ 83,430,358.49	3% - 5.25%	\$ 2,049,764.39	\$ 7,858,241.52	\$ -	\$ 73,522,352.58	
TWDB DFund Series 2011A	\$ 67,470,000.00	1.22% - 4.97%	\$ 751,195.33	\$ 5,166,233.00	\$ 3,859,151.00	\$ 57,693,420.67	
TWDB DFund Series 2012	\$ 175,000,000.00	1.17% - 4.62%	\$ 971,769.13	\$ 12,869,175.00	\$ -	\$ 161,159,055.87	
TWDB DFund Series 2012A	\$ 165,000,000.00	1.26% - 4.62%	\$ 952,269.99	\$ 14,139,669.00	\$ 16,500,000.00	\$ 133,408,061.01	
TWDB Dfund Series 2013	\$ 39,850,000.00	4.50%	\$ 631,279.08	\$ 3,214,292.00	\$ 3,073,489.18	\$ 32,930,939.74	
<b>Subtotal Approved Amounts</b>	<b>\$ 552,250,358.49</b>		<b>\$ 5,826,615.00</b>	<b>\$ 43,247,610.52</b>	<b>\$ 23,432,640.18</b>	<b>\$ 479,743,492.79</b>	
Future Series 2015 (Est.)	\$ 12,085,000.00	4.54%	\$ 321,200.00	\$ 1,004,698.00	\$ -	\$ -	\$ 10,759,102.00
<b>Subtotal Future Amounts</b>	<b>\$ 12,085,000.00</b>		<b>\$ 321,200.00</b>	<b>\$ 1,004,698.00</b>	<b>\$ -</b>	<b>\$ -</b>	<b>\$ 10,759,102.00</b>
<b>Totals</b>	<b>\$ 564,335,358.49</b>		<b>\$ 6,147,815.00</b>	<b>\$ 44,252,308.52</b>	<b>\$ 23,432,640.18</b>	<b>\$ 479,743,492.79</b>	<b>\$ 10,759,102.00</b>

Notes:

1. These values do not include investment income.
2. Green items are estimates only.
3. Series 2011 bond costs include \$681,132.45 for bond insurance and \$459,709.50 for underwriter's discount.



# Exhibit 5

## Monthly GRP Program Funding Report

### Fiscal Year 2014

### Through May 31, 2014

	TWDB WIF Bond Issue	Open Market Bond Issue (Series 2011)	TWDB Dfund (Series 2011A)	TWDB Dfund (Series 2012)	TWDB Dfund (Series 2012A)	TWDB Dfund (Series 2013)	Operating (Cash)	Totals
<b>A. Program Budget</b>								
Bond Issue Amount	\$ 21,500,000.00	\$ 83,430,358.49	\$ 67,470,000.00	\$ 175,000,000.00	\$ 165,000,000.00	\$ 39,850,000.00	\$ 89,498.29	\$ 552,250,358.49
Operating Funds Commitment							\$ 89,498.29	\$ 89,498.29
<b>Total Investment</b>	<b>\$ 21,500,000.00</b>	<b>\$ 83,430,358.49</b>	<b>\$ 67,470,000.00</b>	<b>\$ 175,000,000.00</b>	<b>\$ 165,000,000.00</b>	<b>\$ 39,850,000.00</b>	<b>\$ 89,498.29</b>	<b>\$ 552,339,856.78</b>
<b>B. Contracted Costs</b>								
<b>Phase I</b>								
Contracts Completed	\$ 17,811,662.84	\$ 19,445,967.11	\$ 7,580,101.59	\$ -	\$ 611,352.00	\$ 3,721,564.70	\$ 14,407.80	\$ 49,185,056.04
Current Contract Values	\$ 3,199,479.00	\$ 40,817,518.83	\$ 48,463,603.57	\$ 161,159,055.87	\$ 126,734,895.11	\$ 27,824,525.48	\$ 75,090.49	\$ 408,274,168.35
Change Orders	\$ -	\$ 4,632,181.12	\$ 720,627.80	\$ -	\$ 2,249,140.07	\$ -	\$ -	\$ 7,601,948.99
Project Close Out	\$ (315,554.78)	\$ (397,783.46)	\$ (29,956.96)	\$ -	\$ (64,626.72)	\$ (25.15)	\$ -	\$ (807,947.07)
<b>Phase I Total:</b>	<b>\$ 20,695,587.06</b>	<b>\$ 64,497,883.60</b>	<b>\$ 56,734,376.00</b>	<b>\$ 161,159,055.87</b>	<b>\$ 129,530,760.46</b>	<b>\$ 31,546,065.03</b>	<b>\$ 89,498.29</b>	<b>\$ 464,253,226.31</b>
<b>Extensions</b>								
Contracts Completed	\$ -	\$ -	\$ -	\$ -	\$ -	\$ -	\$ -	\$ -
Current Contract Values	\$ -	\$ 751,769.00	\$ -	\$ -	\$ -	\$ -	\$ -	\$ 751,769.00
Change Orders	\$ -	\$ -	\$ -	\$ -	\$ -	\$ -	\$ -	\$ -
Project Close Out	\$ -	\$ -	\$ -	\$ -	\$ -	\$ -	\$ -	\$ -
<b>Extensions Total:</b>	<b>\$ -</b>	<b>\$ 751,769.00</b>	<b>\$ -</b>	<b>\$ -</b>	<b>\$ -</b>	<b>\$ -</b>	<b>\$ -</b>	<b>\$ 751,769.00</b>
<b>C. Expenditures</b>								
<b>Phase I</b>								
Paid Previous Fiscal Years	\$ 20,445,604.55	\$ 41,810,521.31	\$ 13,516,375.89	\$ 35,745,194.60	\$ 2,741,339.59	\$ -	\$ -	\$ 114,259,035.94
Paid Current Fiscal Year	\$ 124,935.53	\$ 6,313,967.81	\$ 17,760,677.40	\$ 54,895,719.06	\$ 69,403,272.25	\$ 8,547,747.87	\$ 20,845.23	\$ 157,067,165.15
<b>Phase I Total:</b>	<b>\$ 20,570,540.08</b>	<b>\$ 48,124,489.12</b>	<b>\$ 31,277,053.29</b>	<b>\$ 90,640,913.66</b>	<b>\$ 72,144,611.84</b>	<b>\$ 8,547,747.87</b>	<b>\$ 20,845.23</b>	<b>\$ 271,326,201.09</b>
<b>Extensions</b>								
Paid Previous Fiscal Years	\$ -	\$ -	\$ -	\$ -	\$ -	\$ -	\$ -	\$ -
Paid Current Fiscal Year	\$ -	\$ 6,849.80	\$ -	\$ -	\$ -	\$ -	\$ -	\$ 6,849.80
<b>Extensions Total:</b>	<b>\$ -</b>	<b>\$ 6,849.80</b>	<b>\$ -</b>	<b>\$ -</b>	<b>\$ -</b>	<b>\$ -</b>	<b>\$ -</b>	<b>\$ 6,849.80</b>
Issuance Costs	\$ 470,337.08	\$ 2,049,764.39	\$ 751,195.33	\$ 971,769.13	\$ 952,269.99	\$ 628,750.00	\$ -	\$ 5,824,085.92
Debt Service Reserve Fund	\$ -	\$ -	\$ 3,859,151.00	\$ -	\$ 16,500,000.00	\$ 3,073,489.18	\$ -	\$ 23,432,640.18
Capitalized Interest	\$ -	\$ 7,858,241.52	\$ 5,166,233.00	\$ 12,869,175.00	\$ 14,139,669.00	\$ 3,214,292.00	\$ -	\$ 43,247,610.52
<b>D. Remaining</b>								
Uncontracted Funds	\$ 334,075.86	\$ 8,272,699.98	\$ 959,044.67	\$ (0.00)	\$ 3,877,300.55	\$ 1,387,403.79	\$ (0.00)	\$ 14,830,524.85
Funding Balance *	\$ 459,122.84	\$ 25,391,013.66	\$ 26,416,367.38	\$ 70,518,142.21	\$ 61,263,449.17	\$ 24,385,720.95	\$ 68,653.06	\$ 208,502,469.27

\*Excluding net investment income



## Exhibit 6

### GRP Program Current Authorizations As of May 31, 2014

#### Surface Water Transmission System - Consultant Services

Project	Firm	Amount Authorized by Board
T1	Jones & Carter	\$ 2,202,879.75
T2	Klotz Associates	\$ 1,878,727.49
T3	Espey	\$ 1,892,322.47
W1	LAN	\$ 2,729,523.15
W2	Binkley & Barfield	\$ 3,252,056.39
W3	Cobb Fendley	\$ 4,017,012.00
W4	LJA	\$ 1,366,335.57
C1	Dannenbaum	\$ 961,635.69
C2	Schaumburg & Polk	\$ 2,213,465.12
C3	Kimley Horn	\$ 1,355,988.48
C4	RG Miller	\$ 605,208.04
Fiber Optic	EMA	\$ 832,533.04
WRFs	Malcom Pirnie/Arcadis	\$ 2,680,366.57
CM&I	Kellog Brown & Root	\$ 8,657,135.48
<b>Subtotal - Surface Water Transmission System</b>		<b>\$ 34,645,189.24</b>

#### Surface Water Facilities - Consultant Services

Project	Firm	Amount Authorized by Board
WTP	HDR Engineering	\$ 18,775,677.92
HSPS	AECOM	\$ 4,712,513.39
StandPipe	AECOM	\$ 192,235.38
RWI&PS	Freese & Nichols	\$ 3,954,773.35
CA&I	CDMSmith	\$ 5,348,633.00
<b>Subtotal - Surface Water Facilities</b>		<b>\$ 32,983,833.04</b>

#### Program Consultant Services & Other Projects

Project	Firm	Amount Authorized by Board
Program Management	Brown & Gay	\$ 10,695,226.55
Program Survey	Landtech	\$ 514,524.00
Program Geotechnical	Raba Kistner	\$ 145,260.00
Prog Transient Analyses	AECOM	\$ 4,904,748.77
Access Rd/Misc Service	ACES	\$ 857,366.25
SWF Surveying	S&V Surveying	\$ 66,875.00
Land Acq	KDM	\$ 431,592.70
Land Acq	PAS	\$ 1,413,334.88
Program Environmental	Halff Associates	\$ 1,063,698.87
Program Fiber Optics	EMA	\$ 832,533.04
Program Corrosion	V&A Consulting Engineers	\$ 866,676.00
Program Legal Services & Projects	Multiple	\$ 5,929,235.44
<b>Subtotal - Program Consultant Services &amp; Other Projects</b>		<b>\$ 27,721,071.50</b>

#### Surface Water Transmission System Extensions - Consultant Services

Project	Firm	Amount Authorized by Board
MUD99/115	IDS Engineering Group	\$ 293,710.00
MUD99/115	Andrews & Kurth - x	\$ 100,000.00
MUD99/115	PAS - x	\$ 200,000.00
MUD99/115	Arcadis - x	\$ 36,843.00
MUD99/115	V&A Consulting Engineers - x	\$ 20,500.00
MUD99/115	Brown & Gay - x	\$ 121,216.00
<b>Subtotal - Surface Water Transmission System Extensions</b>		<b>\$ 772,269.00</b>





## Exhibit 6 (con't)

### GRP Program Current Authorizations As of May 31, 2014

#### Active or Completed Construction Contracts

Project	Firm	Amount Authorized by Board
GRP Bldg No. 1	Brookstone	\$ 2,008,673.00
Bldg No. 1/Aqua Tx CMT	Aviles Engineering	\$ 123,814.55
Landscape Buffer	Key-Scape Landscape	\$ 53,090.00
Temp Access Road	Lindsey Construction	\$ 977,583.60
Access Road CMT	Terracon Consultants	\$ 10,359.70
Access Road Overlay and Detention	AAA Asphalt	\$ 412,284.59
Access Road Landscape	TreeScapes	\$ 34,165.00
Aqua Texas Sewer	Randy Roan Construction	\$ 547,341.17
Bldg No. 1 Fiber Line	Preferred Technologies	\$ 231,157.56
Surface Water Plant (CMAR)	McCarthy	\$ 190,704,740.00
SWF CMT	Geotest	\$ 1,976,659.00
Transmission System Utility Relocations	Various	\$ 2,125,610.96
Transmission System CMT (T3, W1, W2, W3, W4)	Aviles	\$ 1,601,330.00
Transmission System CMT (T1, T2, C1, C2, C3, C4)	Terracon	\$ 1,006,711.25
Transmission Segment T1	S.J. Louis Construction of Texas Ltd	\$ 14,521,937.14
Transmission Segment T2	Texas Sterling Construction Company	\$ 13,475,718.33
Transmission Segment T3	S.J. Louis Construction of Texas Ltd	\$ 11,393,193.97
Transmission Segment C1A	Garney Companies, Inc.	\$ 3,837,683.40
Transmission Segment C1B	E.P. Brady, LTD.	\$ 683,491.53
Transmission Segment C2	Garney Companies, Inc.	\$ 9,014,837.00
Transmission Segment C3	E.P. Brady, LTD.	\$ 4,972,314.80
Transmission Segment C4	BRH-Garver Construction, L.P.	\$ 5,115,396.90
Transmission Segment W1A	Huff & Mitchell, Inc.	\$ 8,222,000.50
Transmission Segment W1B	Texas Sterling Construction Company	\$ 7,213,544.50
Transmission Segment W2A	Texas Sterling Construction Company	\$ 16,340,258.02
Transmission Segment W2B	Texas Sterling Construction Company	\$ 16,161,600.00
Transmission Segment W3A	Huff & Mitchell, Inc.	\$ 7,880,207.50
Transmission Segment W3B	Garney Companies, Inc.	\$ 8,124,485.50
Transmission Segment W4	Huff & Mitchell, Inc.	\$ 3,656,604.23
Receiving Facilities South	CSA	\$ 7,127,383.00
Receiving Facilities North	Archer Western	\$ 6,160,184.55
Transmission SCADA - Fiber Optic Construction	Fisk Electric Company	\$ 2,885,432.35
Miscellaneous	Other Construction Contracts, Permits, Fees, etc.	\$ 305,163.05
<b>Subtotal - Construction Contracts</b>		<b>\$ 348,904,956.65</b>

#### Totals

	Amount Authorized by Board
Surface Water Transmission System - Consultant Services	\$ 34,645,189.24
Surface Water Facilities - Consultant Services	\$ 32,983,833.04
Program Consultant Services & Other Projects	\$ 27,721,071.50
Surface Water Transmission System Extensions - Consultant Services	\$ 772,269.00
Active or Completed Construction Contracts	\$ 348,904,956.65
<b>Total</b>	<b>\$ 445,027,319.43</b>



## Exhibit 7

### GRP Program Land Acquisition Summary As of May 31, 2014

Project	Anticipated Number of Easements to Acquire	Easements Acquired This Month	Total Easements Acquired and Filed	Total Easements Remaining to be Finalized <sup>1</sup>
Transmission System Segment T1	59	1	59	0
Transmission System Segment T2	0	0	0	0
Transmission System Segment T3	18	5	18	0
Transmission System Segment C1	19	0	19	0
Transmission System Segment C2	80	1	79	1
Transmission System Segment C3	34	0	21	13
Transmission System Segment C4	4	0	4	0
Transmission System Segment W1	32	0	32	0
Transmission System Segment W2	10	0	10	0
Transmission System Segment W3	177	2	176	1
Transmission System Segment W4	9	0	9	0
Totals:	442	9	427	15

<sup>1</sup> Note: Includes final cleanup of title on other legal issues, while right of entry may have been required



# Exhibit 8

## San Jacinto River Authority Groundwater Reduction Plan

### Schedule of Revenues & Expenses—Actual and Budget For the Nine Months Ending May 31, 2014

	May	Fiscal Year To Date				Fiscal Budget	
	Actual	Actual	Budget	Variance	% Variance	Total Year Budget	Actual YTD % of Total Year Budget
<b>OPERATING REVENUES</b>							
GRP pumping fees	\$ 2,681,696	\$ 20,474,319	\$ 23,358,426	\$ (2,884,107)	(12%)	\$ 34,118,874	60%
<b>TOTAL OPERATING REVENUES</b>	<b>\$ 2,681,696</b>	<b>\$ 20,474,319</b>	<b>\$ 23,358,426</b>	<b>\$ (2,884,107)</b>	<b>(12%)</b>	<b>\$ 34,118,874</b>	<b>60%</b>
<b>OPERATING EXPENSES</b>							
Payroll & employee benefit expenses	\$ 235,899	\$ 2,092,950	\$ 3,415,309	\$ 1,322,359	39%	\$ 4,644,900	45%
Professional fees	23,431	358,357	604,297	245,940	41%	813,000	44%
Purchased & contracted services	7,453	87,388	179,904	92,516	51%	239,871	36%
Supplies, materials & utilities	18,068	3,344,829	3,621,120	276,291	8%	3,747,401	89%
Maintenance repairs, parts & rentals	(102)	11,147	13,620	2,473	18%	17,160	65%
General & administration	43,646	465,292	636,372	171,080	27%	850,563	55%
<b>TOTAL OPERATING EXPENSES</b>	<b>\$ 328,394</b>	<b>\$ 6,359,962</b>	<b>\$ 8,470,622</b>	<b>\$ 2,110,660</b>	<b>25%</b>	<b>\$ 10,312,895</b>	<b>62%</b>
<b>NON-OPERATING REVENUES &amp; EXPENSES</b>							
Interest on investments	\$ 47,777	\$ 424,754	\$ 523,423	\$ (98,669)	(19%)	\$ 696,936	61%
Other revenues	-	2,129	-	2,129	100%	-	0%
Interest expense	(1,787,500)	(15,988,138)	(10,134,557)	(5,853,581)	58%	(14,844,597)	108%
<b>TOTAL NON-OPERATING (EXCLUDING ITEMS NOT BUDGETED)</b>	<b>\$ (1,739,723)</b>	<b>\$ (15,561,255)</b>	<b>\$ (9,611,134)</b>	<b>\$ (5,950,121)</b>	<b>62%</b>	<b>\$ (14,147,661)</b>	<b>110%</b>
<b>NET INCOME (LOSS) (EXCLUDING ITEMS NOT BUDGETED)</b>	<b>\$ 613,579</b>	<b>\$ (1,446,897)</b>	<b>\$ 5,276,670</b>	<b>\$ (6,723,567)</b>	<b>(127%)</b>	<b>\$ 9,658,318</b>	<b>(15%)</b>
<b>NON-OPERATING REVENUES &amp; EXPENSES (NOT BUDGETED)</b>							
Depreciation	\$ (27,379)	\$ (208,245)	\$ -	\$ (208,245)	100%	\$ -	0%
Amortized debt issuance expense	-	(500)	-	(500)	100%	-	0%
<b>TOTAL NON-OPERATING (NOT BUDGETED)</b>	<b>\$ (27,379)</b>	<b>\$ (208,745)</b>	<b>\$ -</b>	<b>\$ (208,745)</b>	<b>100%</b>	<b>\$ -</b>	<b>0%</b>
<b>NET INCOME (LOSS) (BUDGETED AND NOT BUDGETED)</b>	<b>\$ 586,200</b>	<b>\$ (1,655,643)</b>	<b>\$ 5,276,670</b>	<b>\$ (6,932,312)</b>	<b>(131%)</b>	<b>\$ 9,658,318</b>	<b>(17%)</b>





## Exhibit 8 (con't)

### GRP Division

#### Clarification of Actual & Budget Variances For Nine Months Ending May 31, 2014

Category	YTD - Driver	May 2014	FYTD 2014
GRP Pumping Fees	Usage variance due to weather conditions.	(858)	(2,884)
Payroll and related expenses	Budgeted positions not filled as scheduled	128	1,322
Professional Fees	Professional fees less than budgeted.	41	246
Purchased & Contracted Services	Purchased and contracted services less than budgeted.	13	93
Supplies, Materials, Utilities, Maintenance, Repairs, Parts & Rentals	Fuel, office supplies, phones, recruiting and misc. expenses less than budgeted.	65	242
	Reservation Fee-COH 2013 Actuals	-	(123)
	Additional Water Supply	-	157
	Maintenance repairs, parts & rentals expense less than budgeted.	1	2
General & Administration	Allocated labor and related expenses less than budgeted, anticipated a quicker rate of growth than has been actualized.	27	171
Non-Operating	Interest/Investment Income	(9)	(96)
	Depreciation expense	(27)	(208)
	Bond Issuance Cost Amort expense	(1)	(1)
	Bond interest expense	(217)	(5,853)
		<u>(837)</u>	<u>(6,932)</u>



## Exhibit 9

### GRP Program Monthly Meeting Log For May 2014

Meeting	Subject of Meeting	Location	Date	Participants
Township Board of Directors Meeting	GRP Construction	The Township Offices	5/15/2014	Township Board of Directors, SJRA Staff, Consultants, and General Public
GRP Review Committee Meeting	Board Agenda Items	G&A Building	5/19/2014	GRP Review Committee, SJRA Staff and General Public
GRP Presentation to St. Mary's Catholic Church in Plantersville	GRP Construction	St. Mary's Catholic Church	5/20/2014	SJRA Staff and General Public
Construction Communication Team Meeting	Construction	G&A Building	5/20/2014	SJRA Staff, GRP Program Team, Consultants, and General Public
SJRA Board of Directors Meeting	Board Agenda Items	G&A Building	5/22/2014	SJRA Board of Directors, SJRA Staff and General Public
CMAR Coordination Meeting	CMAR	GRP Building	Weekly	CMAR, SJRA Staff, GRP Program Team and Consultants
Construction Administration and Inspection Meetings	CA&I	GRP Building	Weekly	SJRA Staff, GRP Program Team and CA&I Team
Land Acquisition Conference Calls	Land Acquisition	GRP Building	Monthly	Andrews Kurth and SJRA Staff



## Exhibit 9 (con't)

### GRP Program Monthly Meeting Log For May 2014

Meeting	Subject of Meeting	Location	Date	Participants
Water Receiving Facilities-South Progress Meeting	WRF-S	GRP Building	Monthly	Contractor, SJRA Staff, GRP Program Team and Consultant Team
Water Receiving Facilities-North Progress Meeting	WRF-N	GRP Building	Monthly	Contractor, SJRA Staff, GRP Program Team and Consultant Team
Segments W1A and W1B Progress Meetings	Segments W1A and W1B	GRP Building	Monthly	Contractor, SJRA Staff, GRP Program Team and Consultant Team
Segments W2A and W2B Progress Meetings	Segments W2A and W2B	GRP Building	Monthly	Contractor, SJRA Staff, GRP Program Team and Consultant Team
Segments T1, T2 and T3 Progress Meetings	Segments T1, T2 and T3	GRP Building	Monthly	Contractor, SJRA Staff, GRP Program Team and Consultant Team
Segments W3, W4, C1, C2, C3, and C4 Monthly Status Meetings	Segments W3, W4, C1, C2, C3, and C4	GRP Building	Monthly	Contractor, SJRA Staff, GRP Program Team and Consultant Team
Standpipe Progress Meeting	Standpipe	GRP Building	Monthly	Contractor, SJRA Staff, GRP Program Team and Consultant
Surface Water Facility Progress Meeting	Surface Water Facilities	GRP Building	Bi-Monthly	SJRA Staff, CMAR, CA&I and Consultant Team





## Surface Water Facilities Construction Photos





# EXHIBIT 10 SWF Construction Photos





## EXHIBIT 10 (con't) SWF Construction Photos



❶ *Pump barrel installation at Raw Water Intake and Pump Station*



## EXHIBIT 10 (con't) SWF Construction Photos

### Water Treatment Process Structures



② Installation of membrane feed pumps at Membrane Building



## EXHIBIT 10 (con't) SWF Construction Photos

### *Water Treatment Process Structures*



③ *Pipe gallery installation at the Granulated Activated Carbon Building*



## EXHIBIT 10 (con't) SWF Construction Photos

### *Water Treatment Process Structures*



④ *Installation of sodium hypochlorite tanks at the Chemical Storage Facilities*



## EXHIBIT 10 (con't) SWF Construction Photos

*Finished Water Process Structures*



⑤ *Pump installation at the High Service Pump Station*



## EXHIBIT 10 (con't) SWF Construction Photos

*Finished Water Process Structures*



⑥ *View of east side of Blower Building*



## EXHIBIT 10 (con't) SWF Construction Photos

*Process Residual Treatment and Disposal Structures*



① *Masonry installation at the Dewatering Building*



## EXHIBIT 10 (con't) SWF Construction Photos

*Process Residual Treatment Disposal Structures*



⑧ *Pump Room concrete roof installation at the Sludge Thickeners*



## EXHIBIT 10 (con't) SWF Construction Photos

### *Operational Structures*



⑨ *Completion of structural systems at the Operations Building*



## EXHIBIT 10 (con't) SWF Construction Photos

### *Operational Structures*



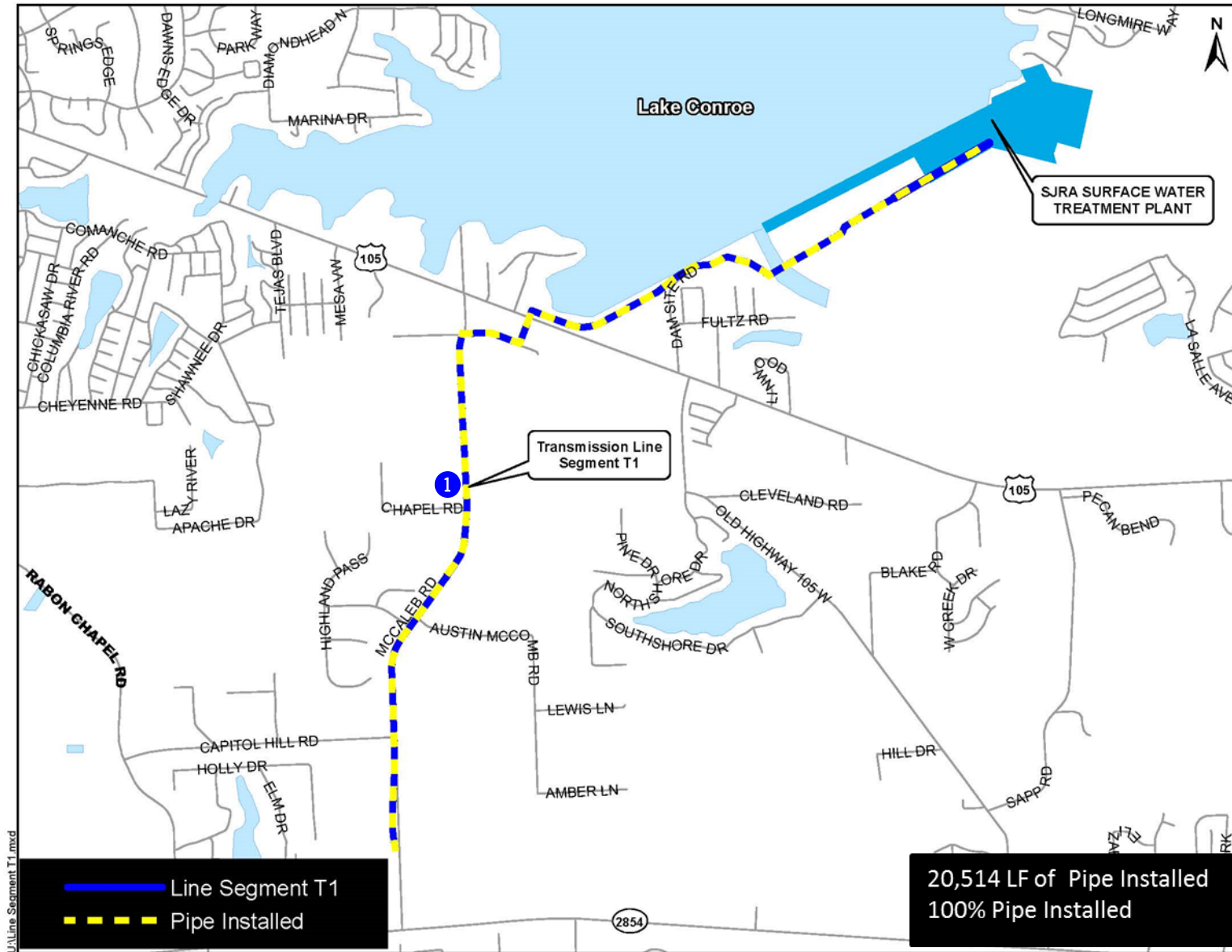
10 *Main electrical switchgear installation at the Electrical Facilities*



## Transmission Line System Construction Photos



# EXHIBIT 11 Transmission Line System Construction Photos



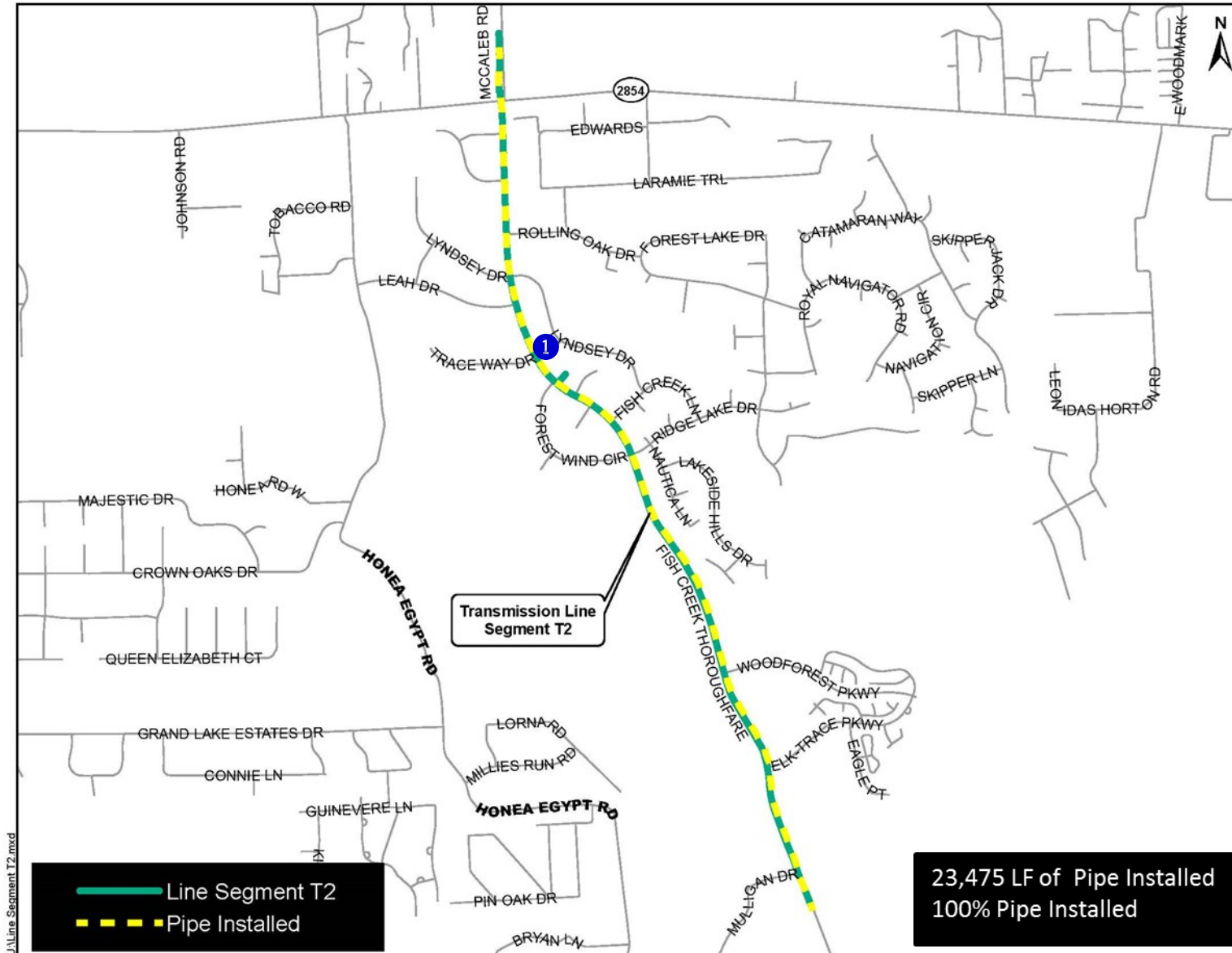
## EXHIBIT 11 (con't) Transmission Line System Construction Photos



① *Segment T1 - Manhole installation along McCaleb Road*



# EXHIBIT 11 (con't) Transmission Line System Construction Photos



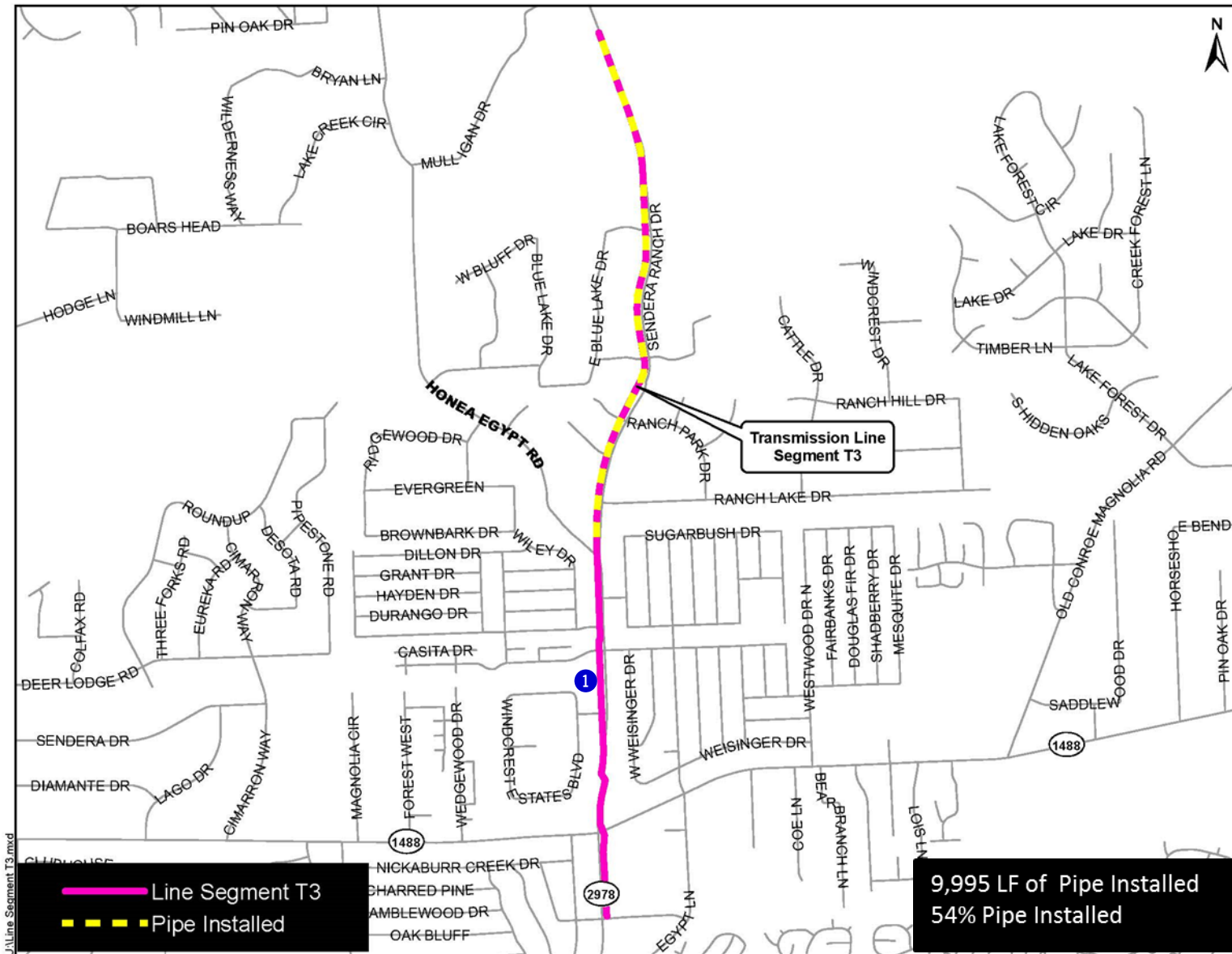


## EXHIBIT 11 (con't) Transmission Line System Construction Photos



① *Segment T2 - Fiber optic conduit installation along Fish Creek Thoroughfare*

# EXHIBIT 11 (con't) Transmission Line System Construction Photos





## EXHIBIT 11 (con't) Transmission Line System Construction Photos



① *Segment T3—54-inch pipe installation along Sendera Ranch Road*





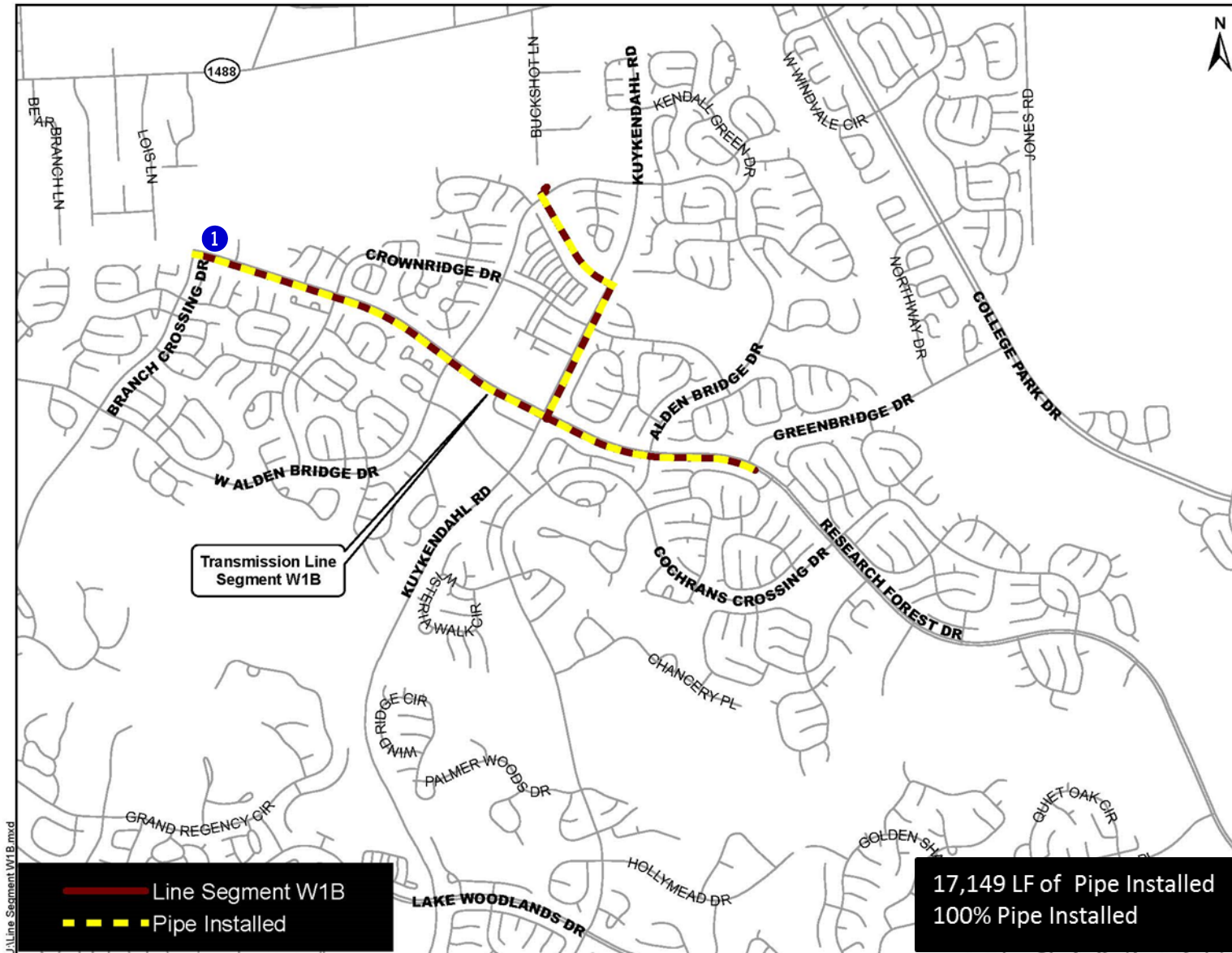
## EXHIBIT 11 (con't) Transmission Line System Construction Photos



① *Segment W1A—Pavement subgrade stabilization along Research Forest Drive*



# EXHIBIT 11 (con't) Transmission Line System Construction Photos



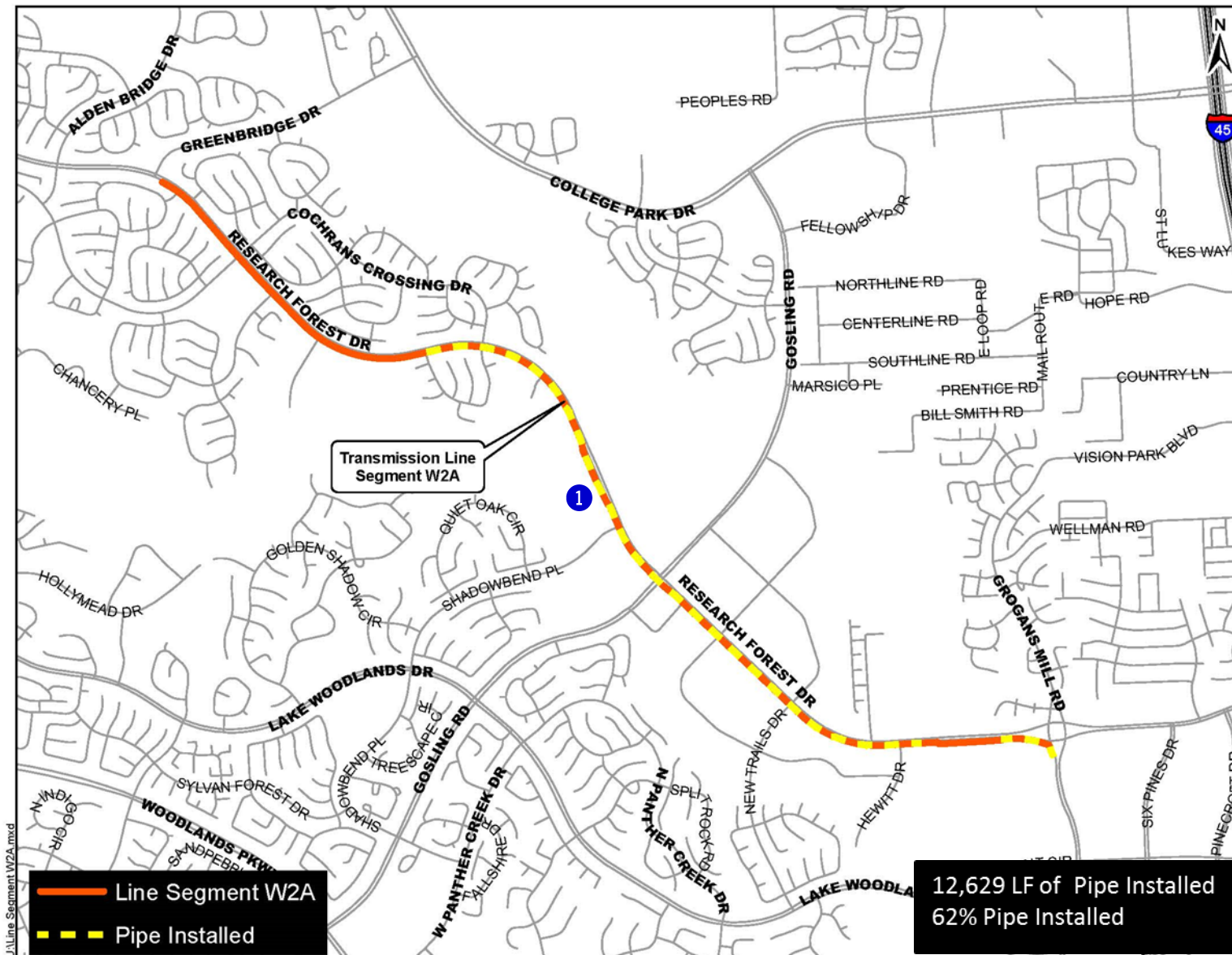
## EXHIBIT 11 (con't) Transmission Line System Construction Photos



① *Segment W1B - Manhole installation along Research Forest Drive*



# EXHIBIT 11 (con't) Transmission Line System Construction Photos



# EXHIBIT 11 (con't) Transmission Line System Construction Photos

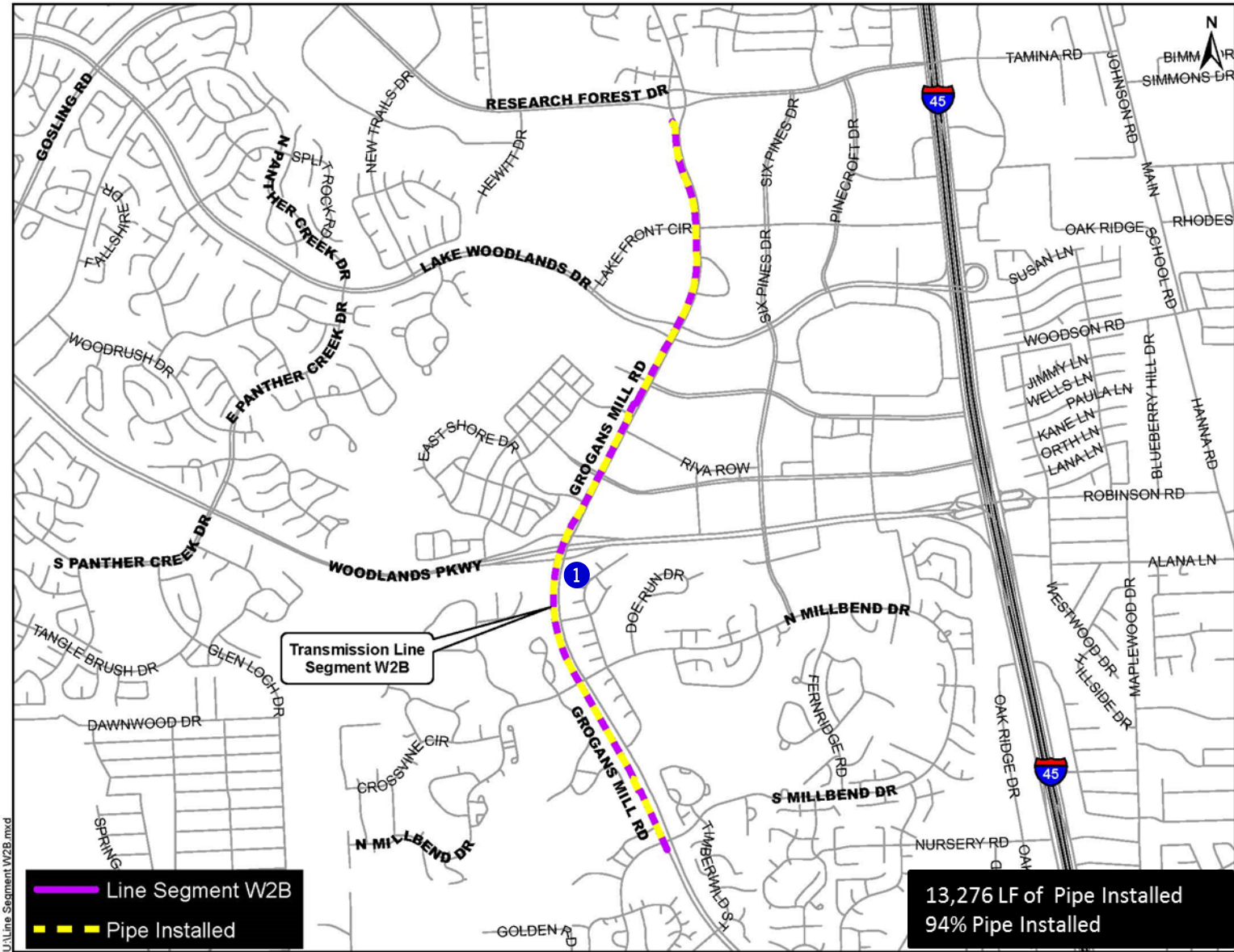


① Segment W2A - Manhole installation along Research Forest Drive





# EXHIBIT 11 (con't) Transmission Line System Construction Photos



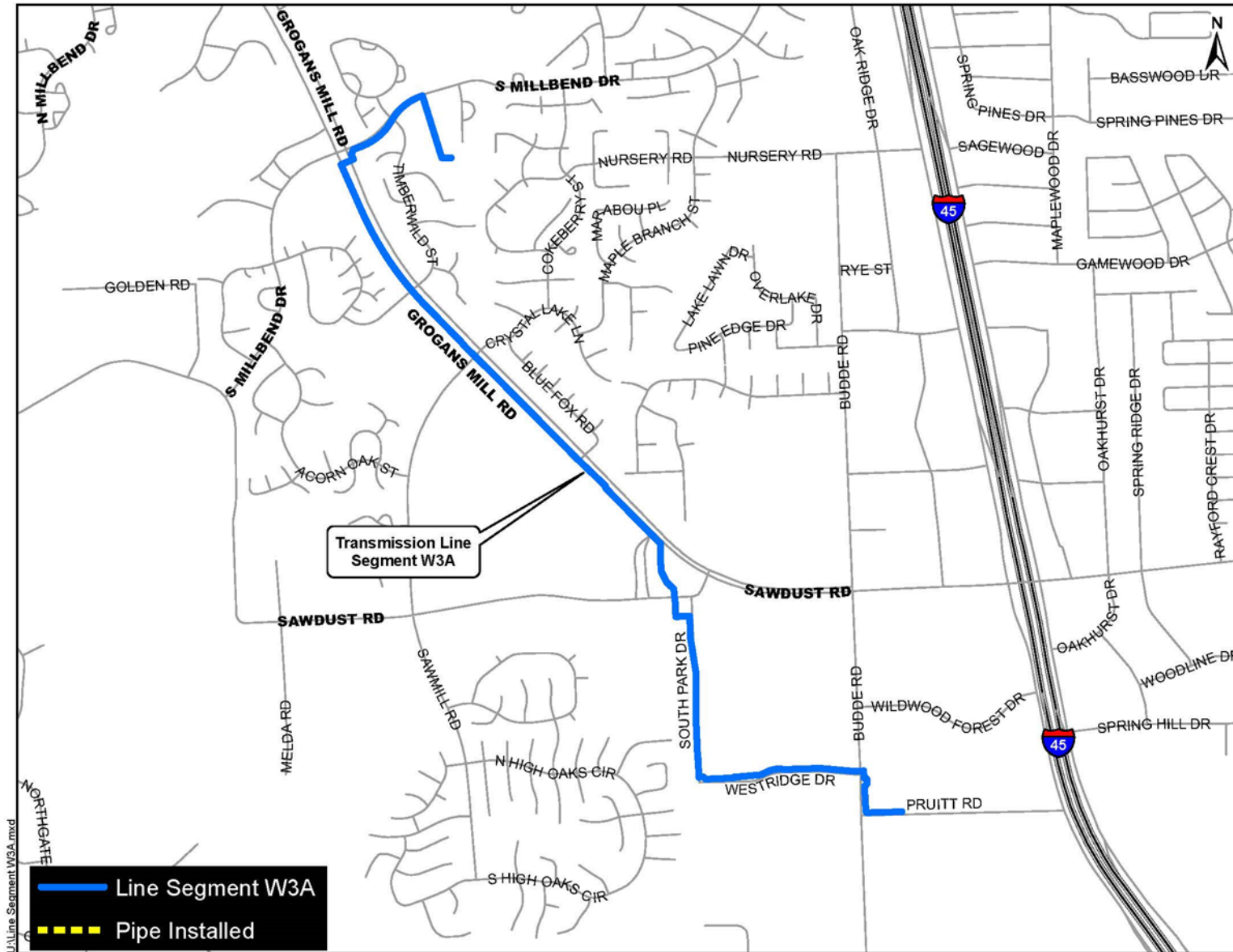
## EXHIBIT 11 (con't) Transmission Line System Construction Photos



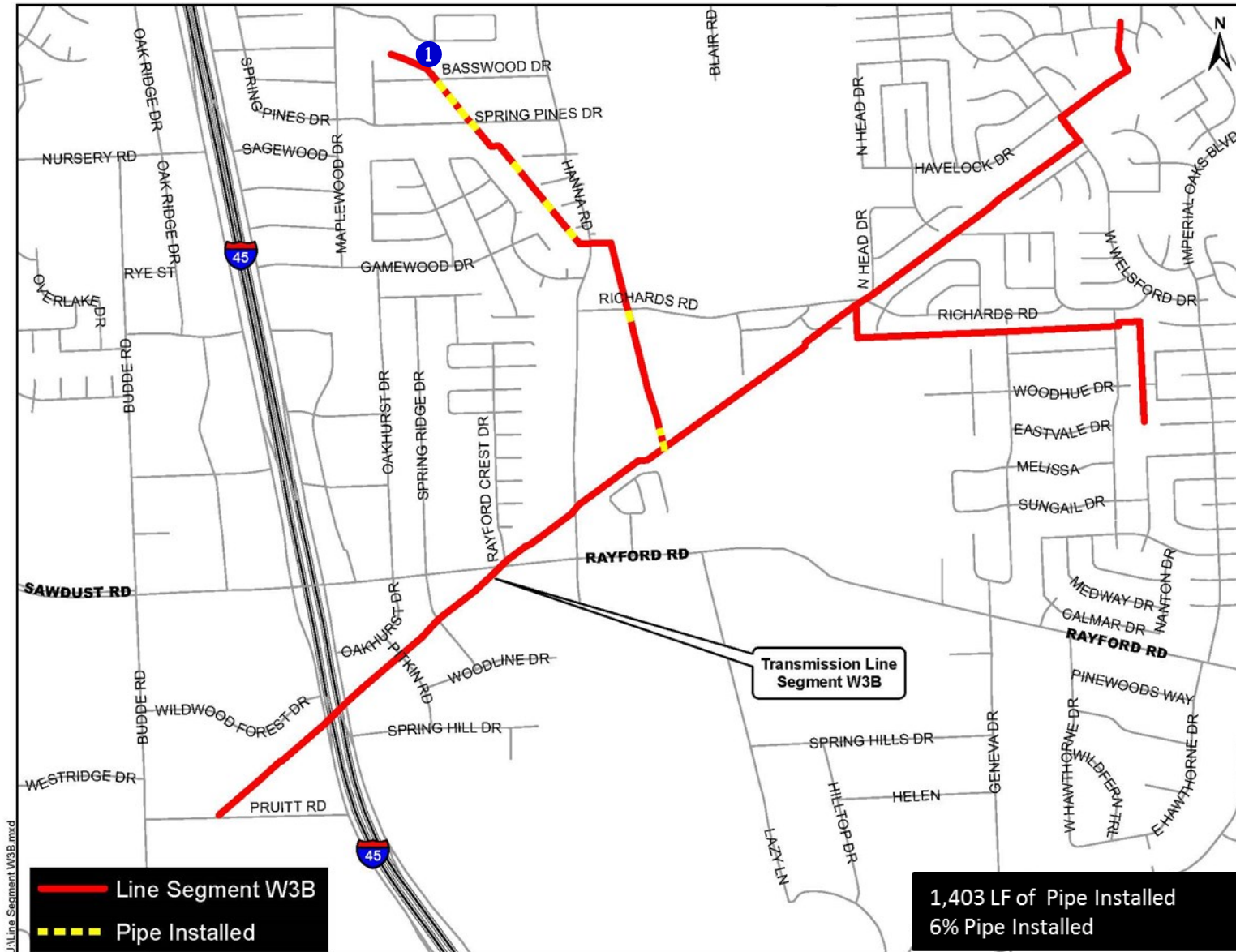
① *Segment W2B - Concrete placement along Grogans Mill Road*



# EXHIBIT 11 (con't) Transmission Line System Construction Photos



# EXHIBIT 11 (con't) Transmission Line System Construction Photos



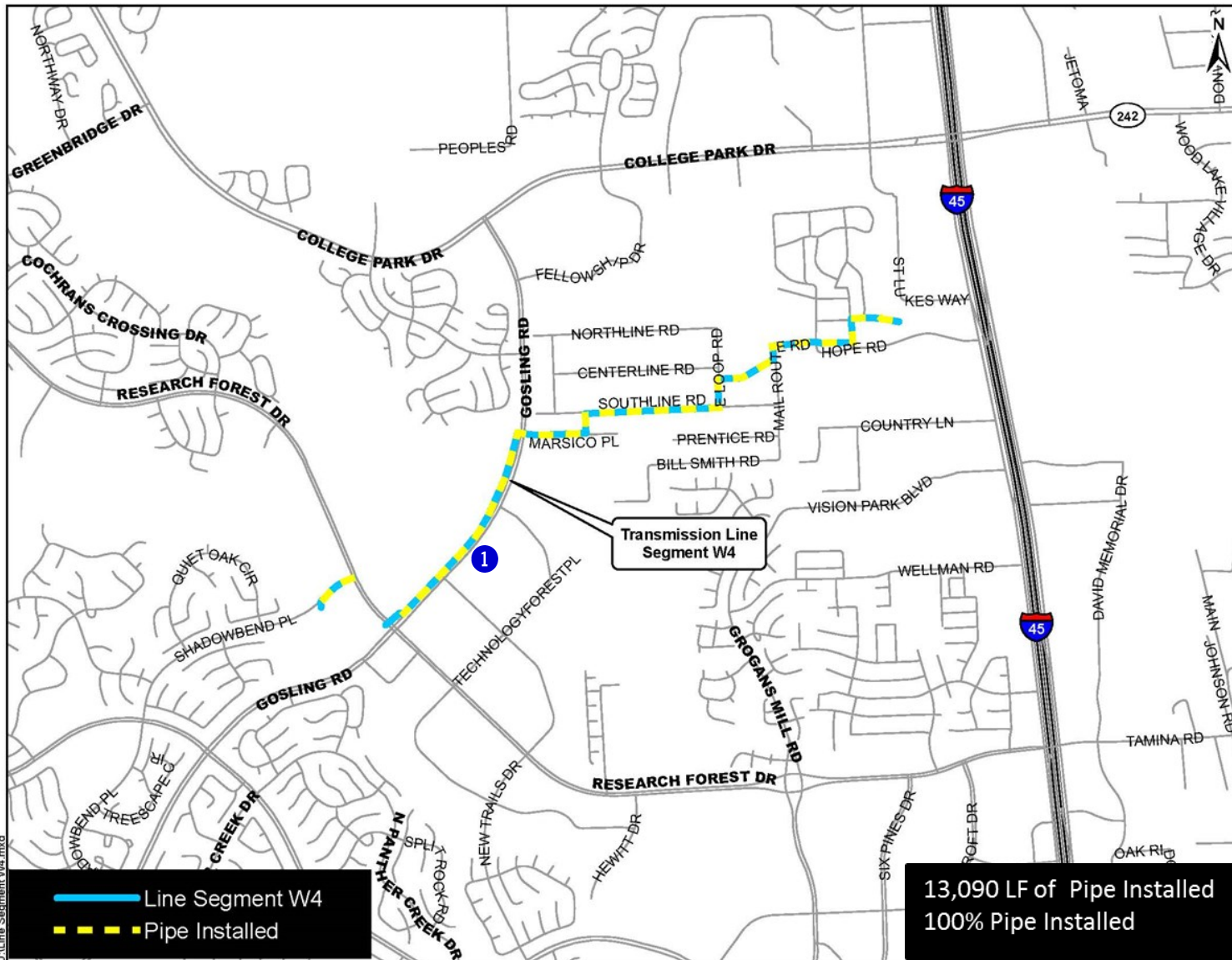


## EXHIBIT 11 (con't) Transmission Line System Construction Photos



① Segment W3B— Pipe installation along Montgomery County Drainage District No. 6 right-of-way

# EXHIBIT 11 (con't) Transmission Line System Construction Photos



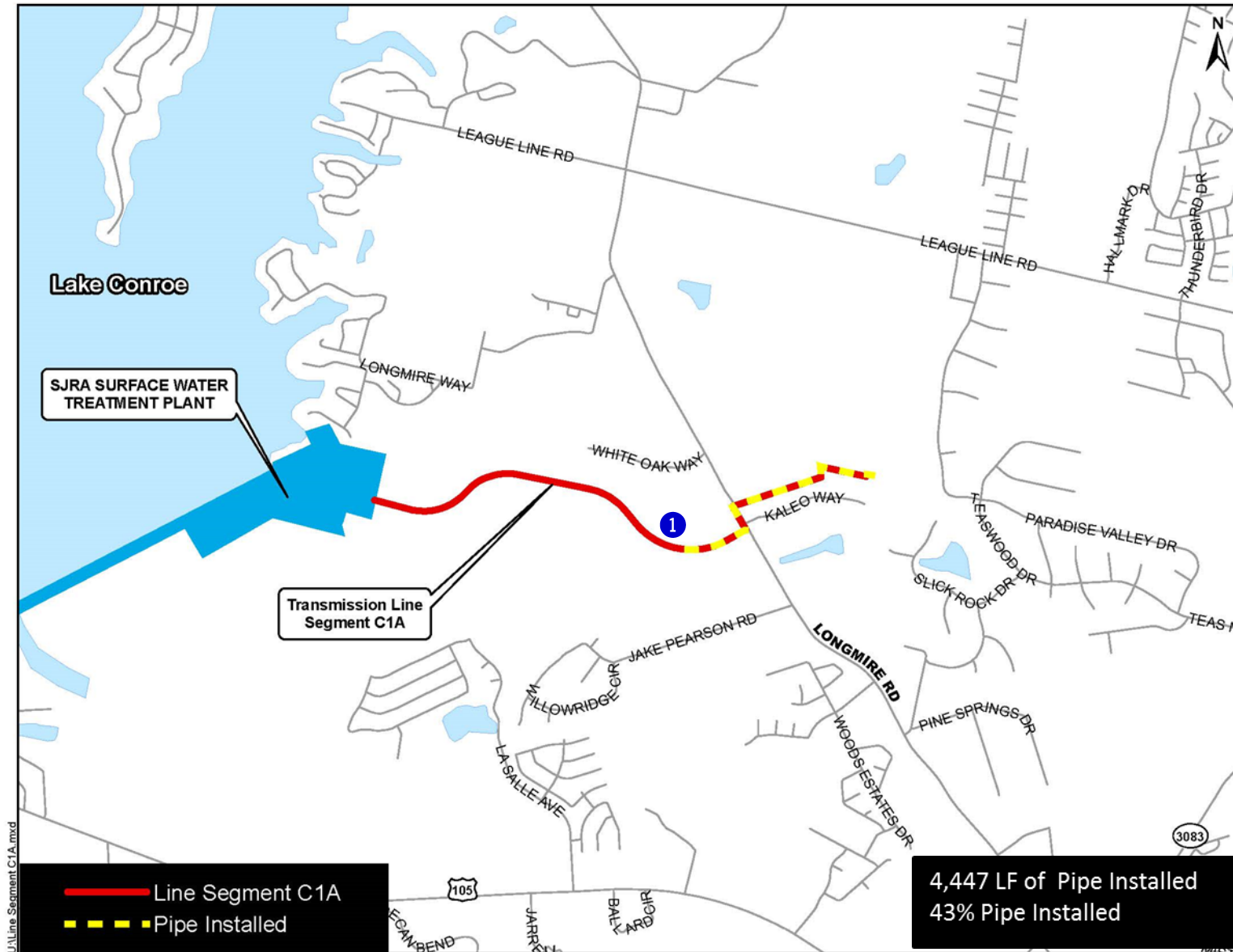


## EXHIBIT 11 (con't) Transmission Line System Construction Photos



① *Segment W4 - 24-inch pipe and fiber optic conduit installation on Gosling Road*

# EXHIBIT 11 (con't) Transmission Line System Construction Photos



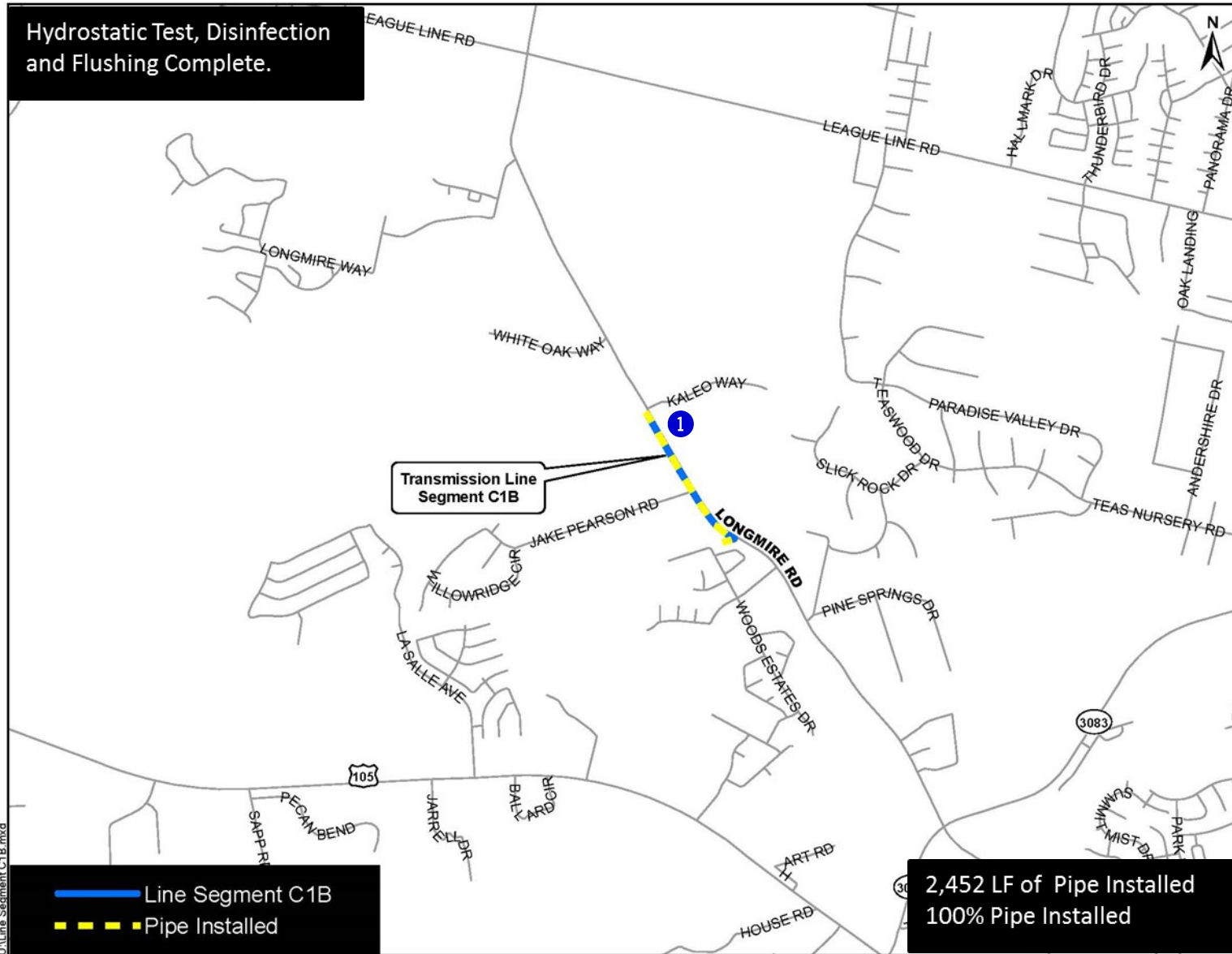


## EXHIBIT 11 (con't) Transmission Line System Construction Photos



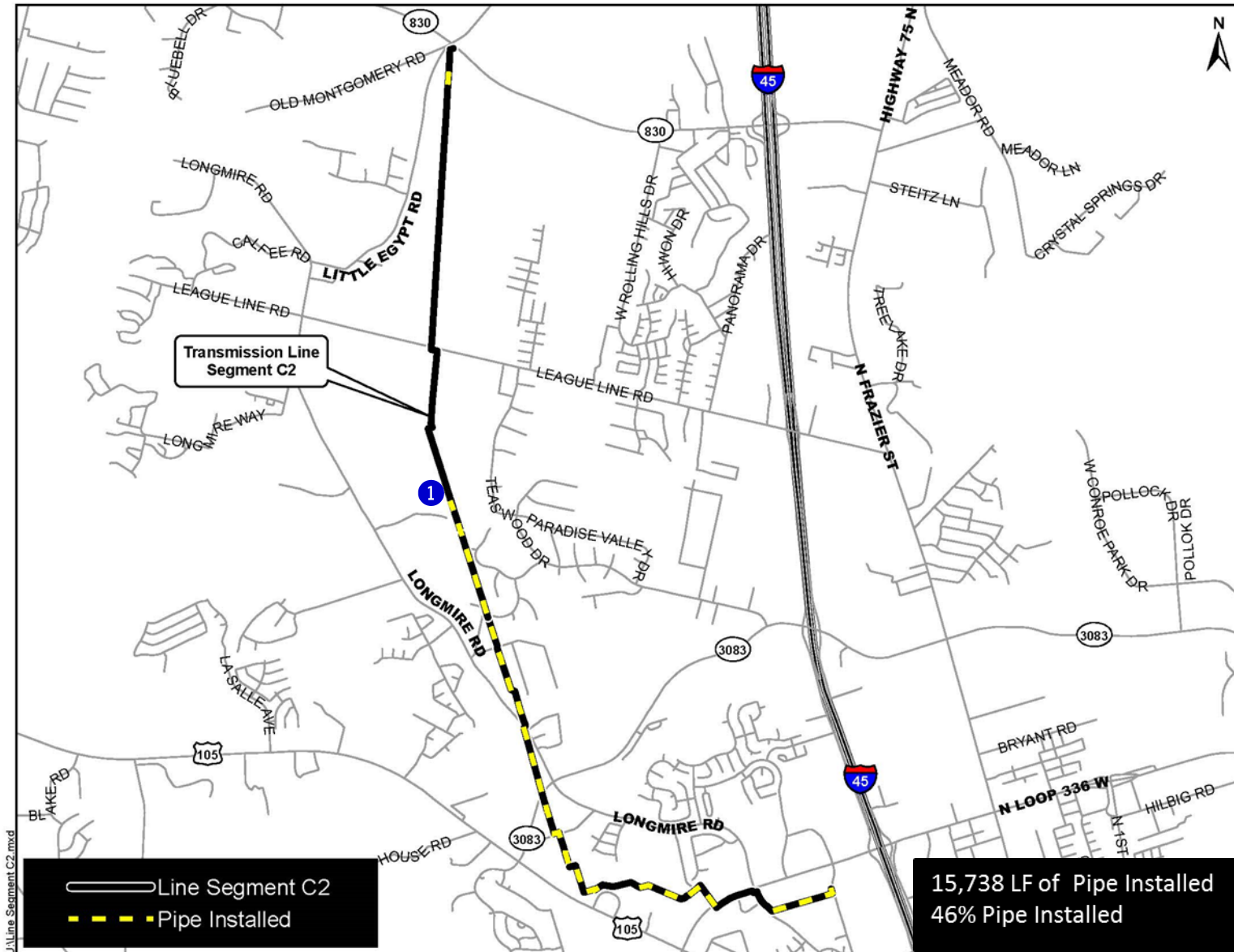
① *Segment C1A - 42-inch pipe installation along GRP Access Road*

# EXHIBIT 11 (con't) Transmission Line System Construction Photos





# EXHIBIT 11 (con't) Transmission Line System Construction Photos



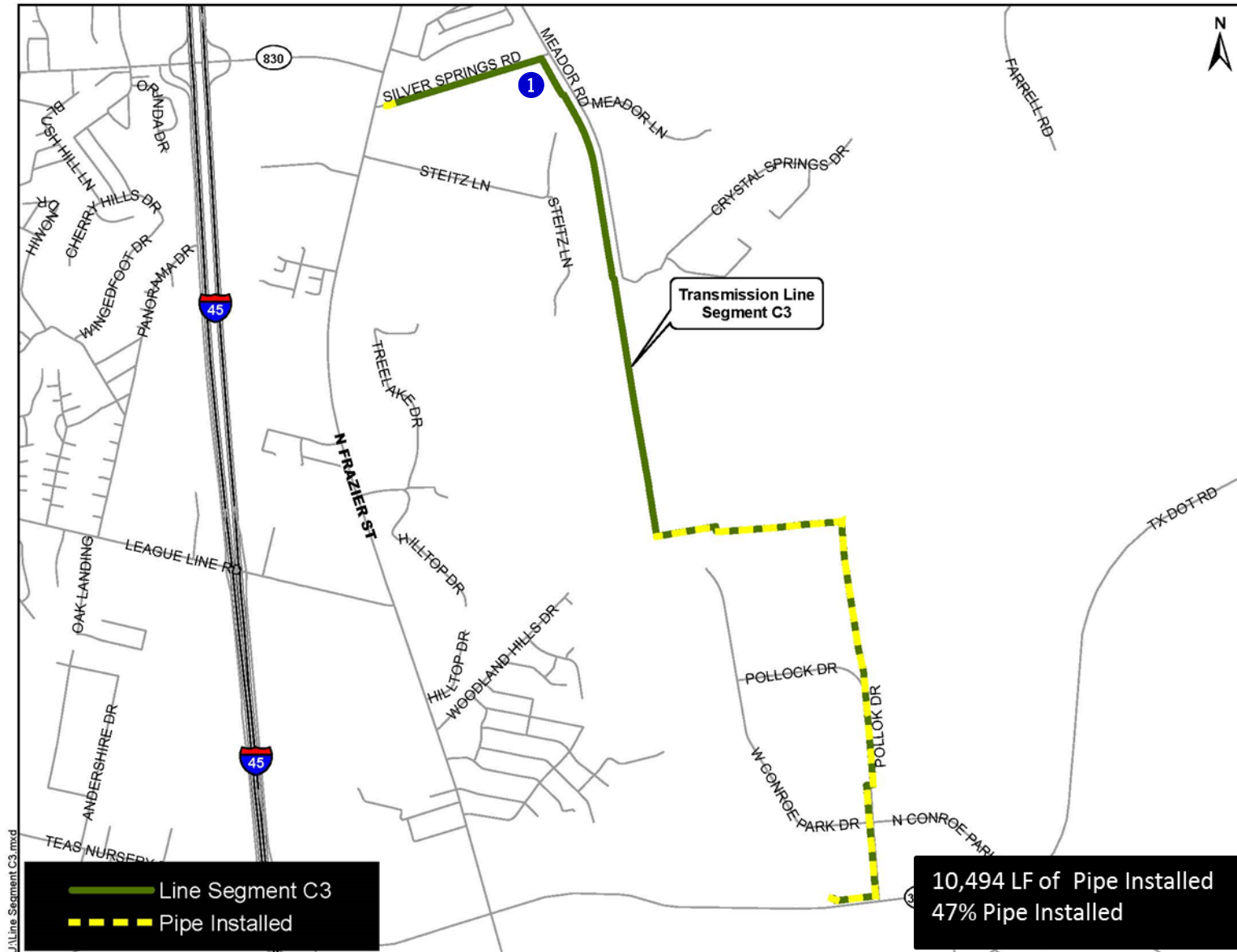
## EXHIBIT 11 (con't) Transmission Line System Construction Photos



① *Segment C2— 48-inch Steel Casing installation along Entergy easement*



# EXHIBIT 11 (con't) Transmission Line System Construction Photos



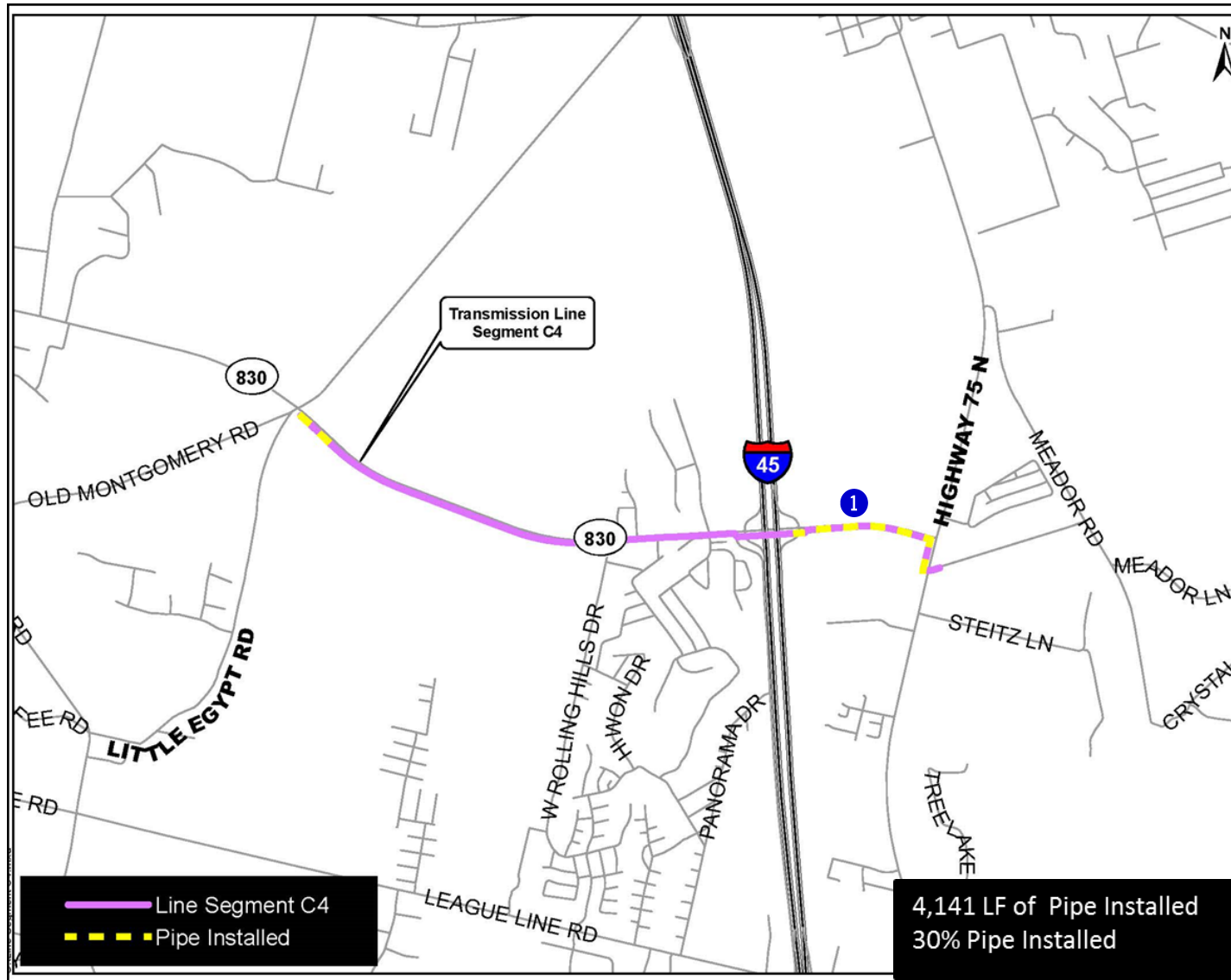
## EXHIBIT 11 (con't) Transmission Line System Construction Photos



① *Segment C3— Staging of pipe materials along Girl Scout property*



# EXHIBIT 11 (con't) Transmission Line System Construction Photos



## EXHIBIT 11 (con't) Transmission Line System Construction Photos

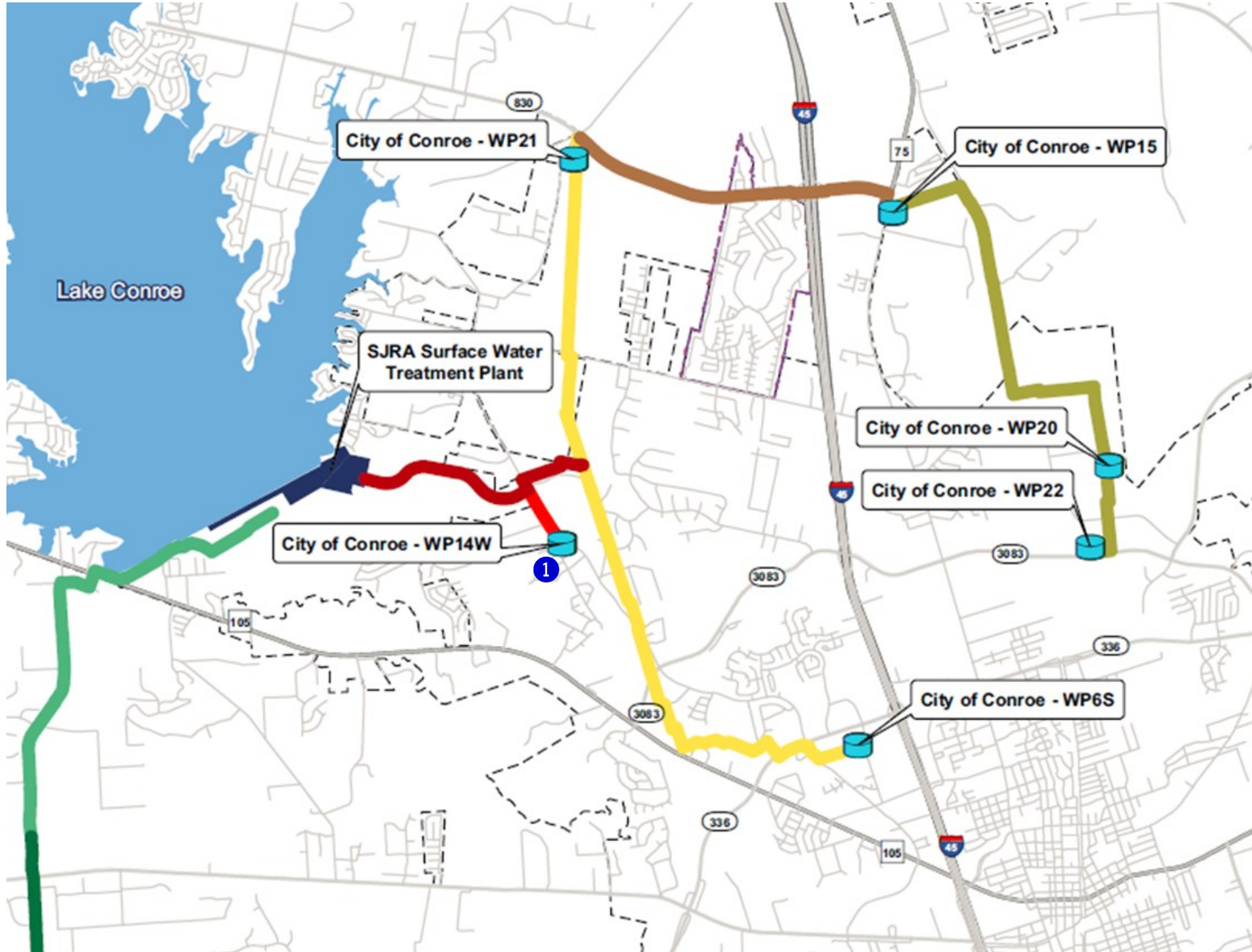


① Segment C4—24-inch pipe installation along FM 830



# EXHIBIT 11 (con't) Transmission Line System Construction Photos

## WATER RECEIVING FACILITIES—NORTH



## EXHIBIT 11 (con't) Transmission Line System Construction Photos

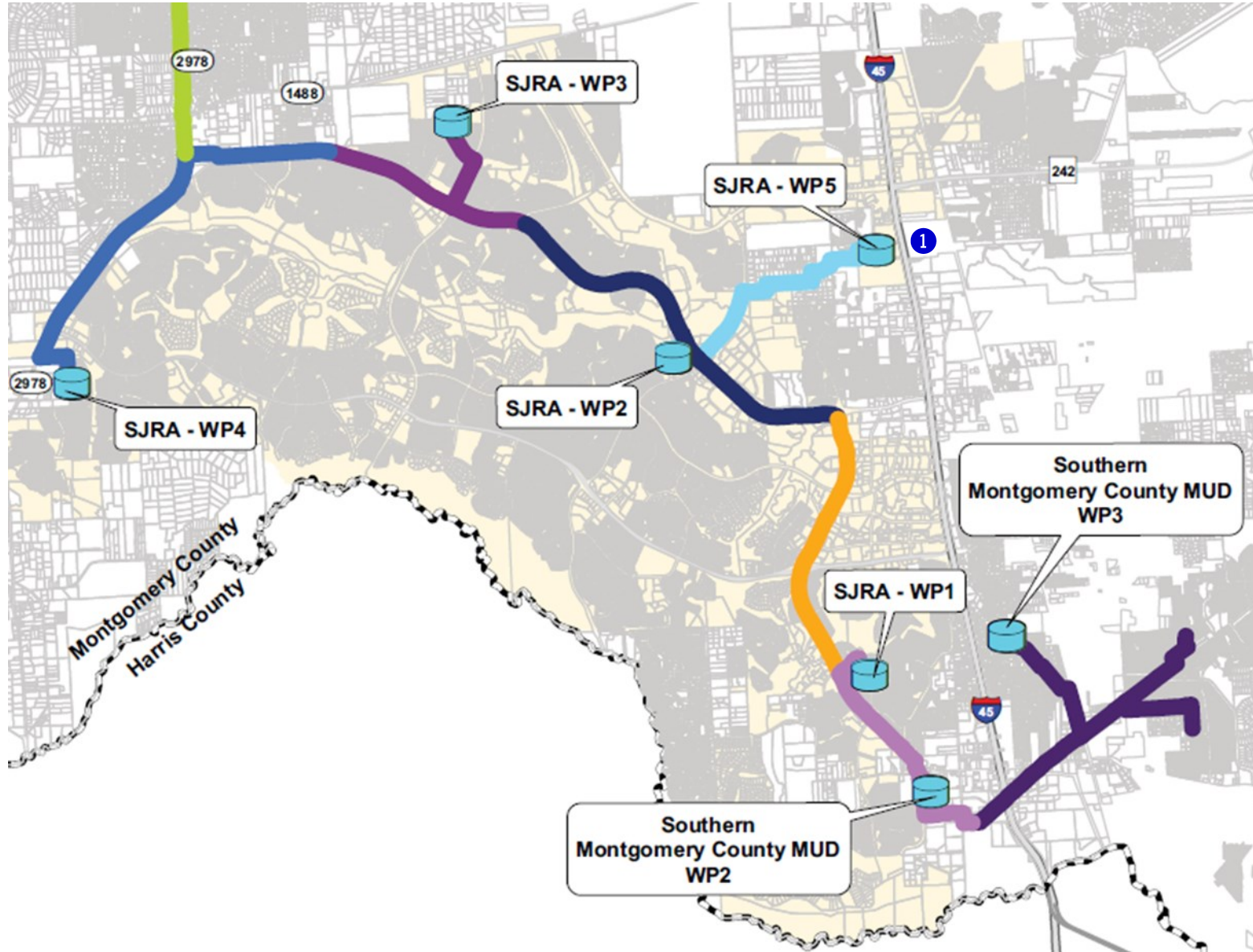


① *Flow Control Pressure Slab installation at Conroe Water Plant No. 14*



# EXHIBIT 11 (con't) Transmission Line System Construction Photos

## WATER RECEIVING FACILITIES—SOUTH





## EXHIBIT 11 (con't) Surface Transmission System Line Construction Photos

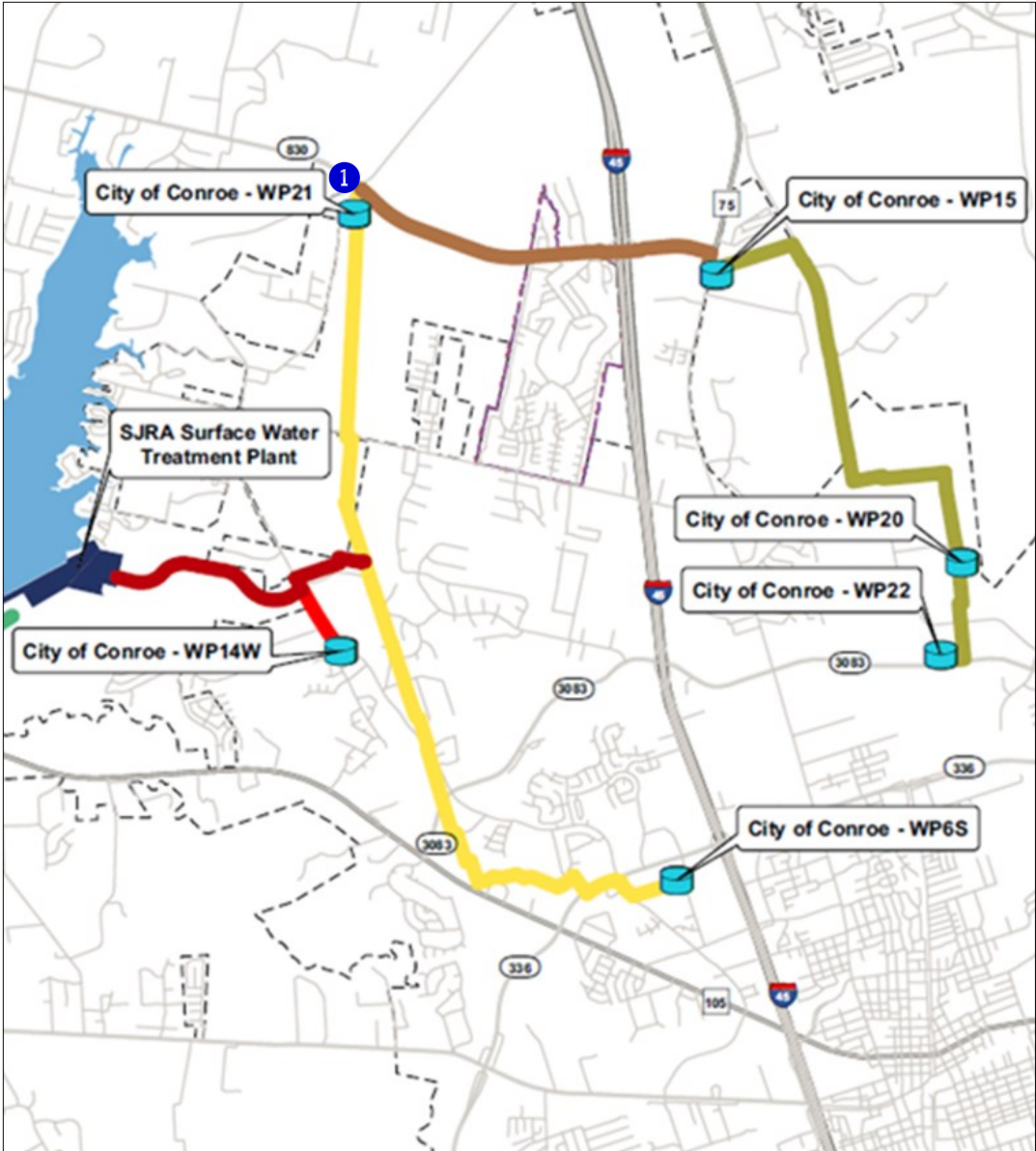


① *Surface Water Receiving Facility – South —Control Building Foundation at SJRA Water Plant No. 5*



# EXHIBIT 12 Surface Water Standpipe Construction Photos

Surface Water Standpipe



## EXHIBIT 12 (con't) Surface Water Standpipe Construction Photos



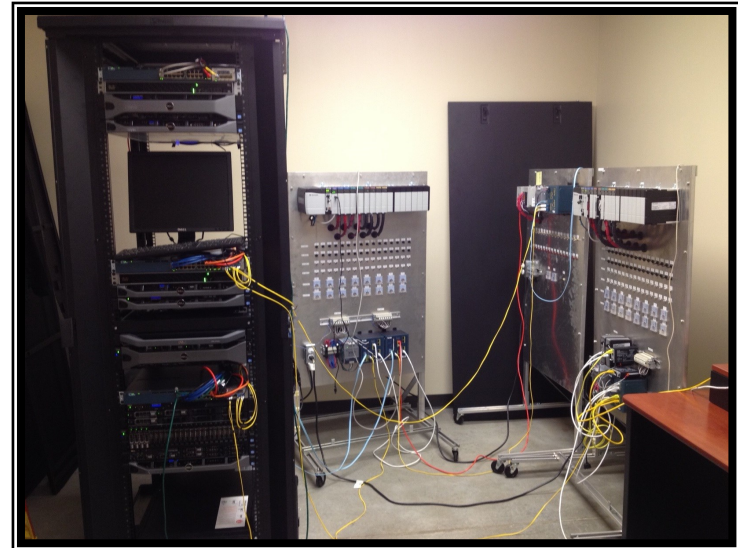
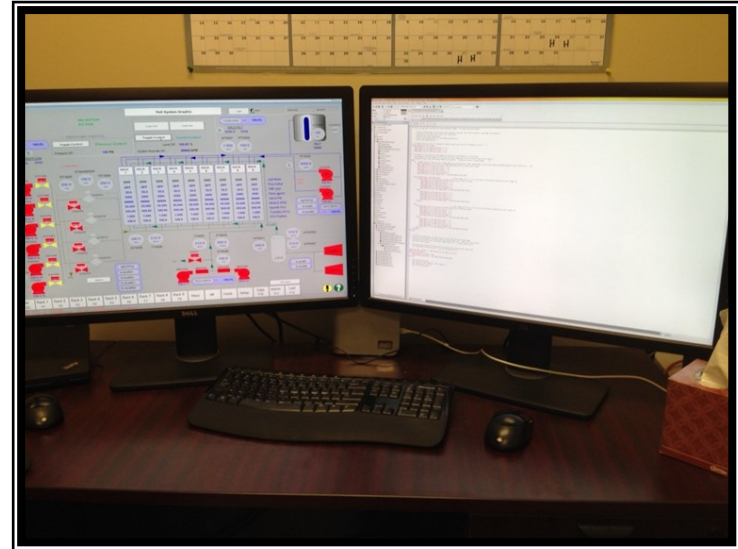
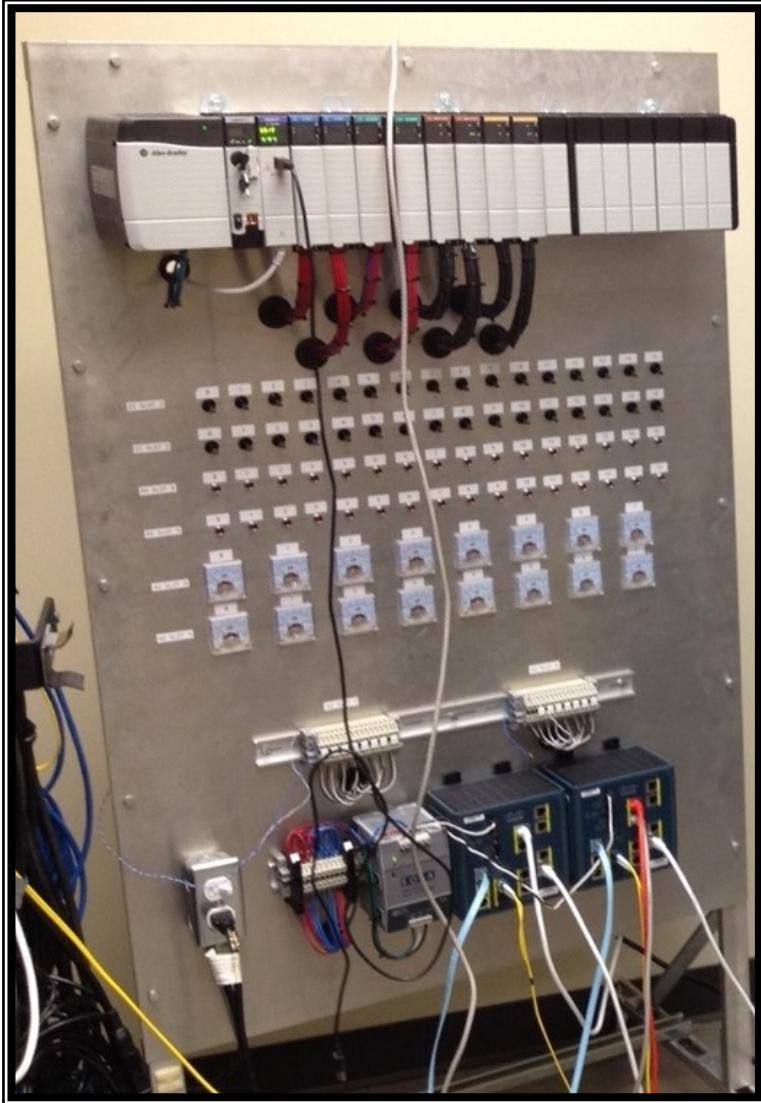
① *Surface Water Standpipe—Reinforced steel and formwork installation*



## Fiber Optic Network Communication System



## EXHIBIT 13 (con't) Fiber Optic Network Communication System

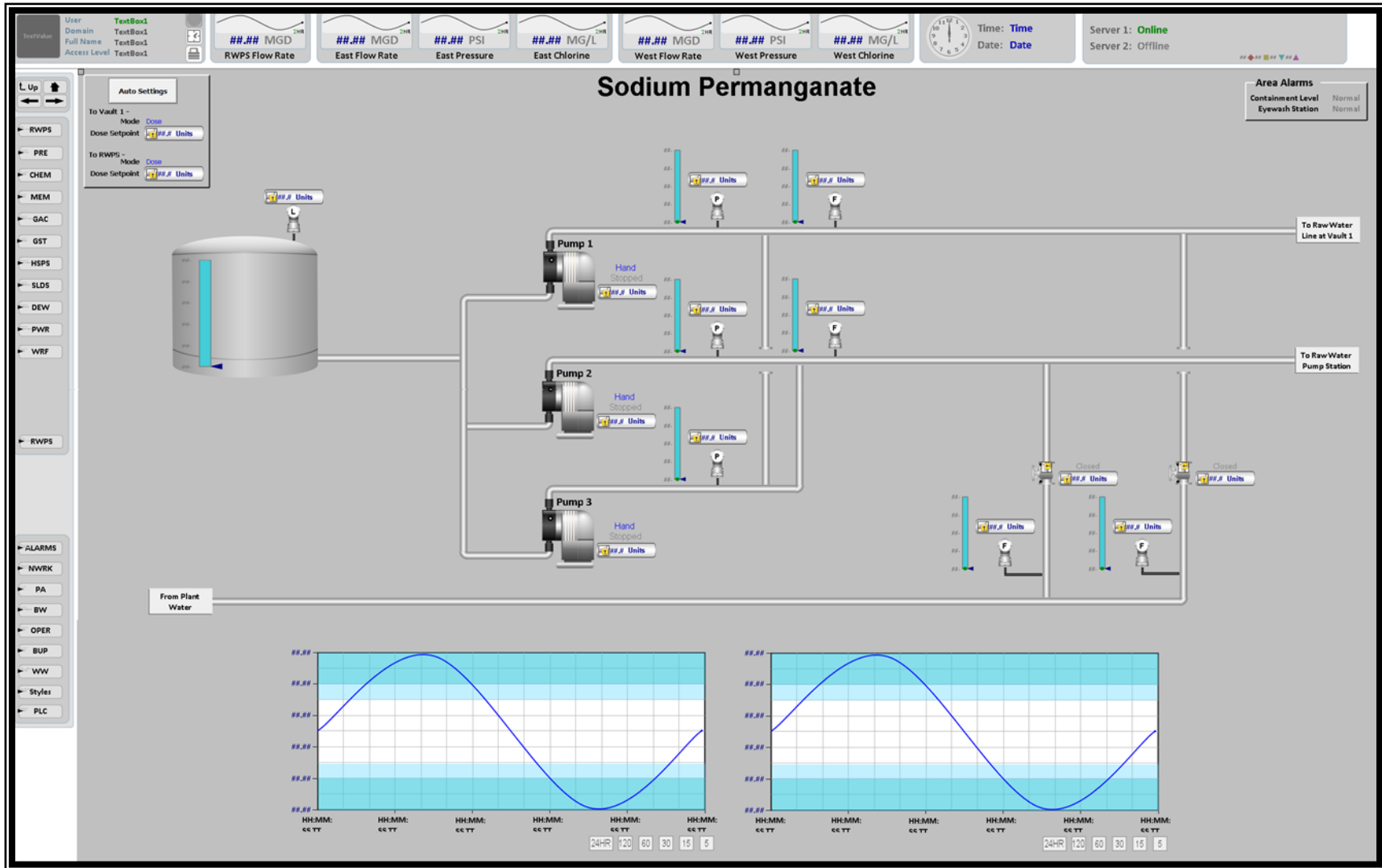


*Left: Programmable logic controller*

*Right: Dual operator monitors (top photo) and development system server rack and PLCs (bottom photo)*



# EXHIBIT 13 (con't) Fiber Optic Network Communication System



Typical HMI graphical screen

