



GROUNDWATER REDUCTION PLAN PROGRAM

MONTHLY PROGRESS REPORT - MARCH 2014



TABLE OF CONTENTS

Table of Contents	1	3.3 Process and Procedures	10
Acronyms and Definitions	2	3.4 Look Ahead	10
1.0 Planning	3	4.0 Cost Report and Financial Considerations	11
1.1 Strategic	3	4.1 GRP Program and GRP Project CIP Budget(s)	11
1.2 Engineering and Construction	3	4.2 Financial Reports	11
1.3 Meetings	3	4.3 Invoices/Applications for Payment	11
2.0 Project Activities	4	4.4 Contract Amendments and Change Orders	12
2.1 Engineering	4	4.5 Claims	12
2.2 State Agency Coordination	4	4.6 CIP Cash Flow	12
2.3 Surface Water Transmission System Project Data	5	4.7 CIP Budget Estimates at Completion	12
2.4 Surface Water Transmission System Construction Progress	8	4.7.1 GRP Program	12
2.5 Surface Water Facility Construction Progress and Project Data	9	4.7.2 GRP Projects	12
3.0 Procurement	10	4.8 Land Acquisition	12
3.1 Solicitations	10	5.0 Quality Assurance	13
3.2 Contract Awards	10	5.1 Final Design	13
		5.2 Pre-Construction	13
		5.3 Construction	13
		6.0 Exhibits	14



ACRONYMS AND DEFINITIONS

ACRONYMS

CA&I	Construction Administration and Inspection
CCT	Construction Communication Team
CIP	Capital Improvement Project
CM&I	Construction Management and Inspection
CMAR	Construction Manager At Risk
CMT	Construction Materials Testing
CSB / P	Competitive Sealed Bid / Proposal
EA	Environmental Assessment
EAC	Estimate At Completion
FONCS	Fiber Optics Network Communication System
GIS	Geographic Information System
GRP	Groundwater Reduction Plan
GST	Groundwater Storage Tank
HSPS	High Speed Pump Station
LSGCD	Lone Star Groundwater Conservation District
LVGU	Large Volume Groundwater User
NTP	Notice To Proceed
PER	Preliminary Engineering Report
PMP	Program Management Plan
PVC	Polyvinyl Chloride
PSA	Professional Services Agreement
QA	Quality Assurance
RCCP	Reinforced Concrete Cylinder Pipe
RFB / Q / P	Request For Bids / Qualifications / Proposals
RWI / RWPS	Raw Water Intake / Raw Water Pump Station
SJRA	San Jacinto River Authority
SOQ	Statement of Qualifications
SWF	Surface Water Facilities (SWTP, HSPH and RWI)
SWRF	Surface Water Receiving Facilities
SWTP	Surface Water Treatment Plant
TCEQ	Texas Commission on Environmental Quality

DEFINITIONS

TWDB	Texas Water Development Board
TXDOT	Texas Department of Transportation
WIF	Water Infrastructure Fund
GROUNDWATER REDUCTION PLAN (GRP)	The document developed and filed with the LSGCD indicating SJRA's plan to reduce the permitted 2009 groundwater pumpage of its GRP Participants by 30%. The GRP is administered by the SJRA, including any supplements, revisions, or amendments.
GRP PROGRAM TEAM	SJRA staff, Program Management Consultant (Brown & Gay Engineers, Inc.) staff, and technical consultants working interdependently toward meeting the goals of the Groundwater Reduction Plan.
GRP ADMINISTRATOR	The SJRA General Manager's designee who administers the SJRA Groundwater Reduction Plan and GRP Contract with GRP Participants.
GRP CONTRACT	Contract between the SJRA and a Participant to be included in the SJRA's efforts to meet the surface water conversion requirements mandated by the LSGCD.
JOINT GRP	GRP which is prepared to include (takes into account) LVGUs who have executed a GRP Contract with the SJRA to join the SJRA's GRP. Contracted LVGUs obtain LSGCD groundwater reduction regulation compliance through the SJRA's Joint GRP without preparing and submitting a GRP.
LARGE VOLUME GROUNDWATER USER(s) (LVGU)	Any person or entity that, through a single well or a combination of wells, actually produces or is authorized by permit(s) issued by the LSGCD to produce 10 million gallons or more of groundwater annually on or after January 1, 2008.
PARTICIPANT(S)	Regulated User(s) that enters into and remains subject to a written agreement with the SJRA to be included in the SJRA's GRP and includes the legal successors or assigns of Participant(s).
REGULATED USER(S)	Any public or private entity or person that is or becomes subject to the District Regulatory Plan established by the LSGCD and includes any amendments, revisions or supplements thereto as may be adopted by the LSGCD.
SJRA GRP DIVISION	Division of the SJRA responsible for GRP compliance, and the management, administration, operation and maintenance of the surface water facilities and surface water transmission system.



1.0 PLANNING

The GRP Program Team meets regularly for the purposes of setting performance expectations and goals of the GRP Program, identifying the efforts required to achieve these objectives, evaluating the effectiveness of such efforts, and modifying those efforts based upon both internal and external performance evaluations.

1.1 STRATEGIC

A significant portion of this month's focus centered around future business planning for the GRP. As the Program moves closer to its start-up date, it is imperative to recognize and plan for all aspects of business from now through the next ten years. With this in mind, staff continues gathering and researching information to continue to build the foundation needed to establish certain criteria for implementation from now through Fiscal Year 2024. The month of March brought about the addition of two new GRP staff members – an Operations Superintendent and a Maintenance Superintendent. Both superintendents will assist staff in continuing to fully prepare, facilitate, coordinate and evaluate operational and maintenance functions throughout the Surface Water Facility and transmission system.

1.2 ENGINEERING AND CONSTRUCTION

All procurement services for construction proposals have been completed and fifteen transmission line construction contracts have been awarded. The engineering consultants will provide construction phase services by reviewing submittals and requests for information as work proceeds.

1.3 MEETINGS

Various meetings continued this month with the GRP Program Team. A listing of these meetings is attached as [Exhibit 9](#).



Installation of Roofing at Raw Water Intake at Surface Water Facility

2.0 PROJECT ACTIVITIES

Currently, the GRP Program remains on schedule for the delivery of treated surface water to select Joint GRP Participants on or before January 1, 2016. A simplified GRP Program schedule can be found in attached Exhibit 1.

2.1 ENGINEERING

SURFACE WATER TRANSMISSION SYSTEM

Segments T1, T2, T3, W1A, W1B, W2A, W2B, W3A, W3B, W4, C1A, C1B, C2, C3, C4, Surface Water Receiving Facilities—North, Surface Water Receiving Facilities—South, Standpipe, and Fiber Optic Communications System – Design is complete. Engineering consultant is providing construction phase services.

Construction Management and Inspection (CM&I) – The CM&I consultant provided management and inspection services for Transmission Segments T1, T2, T3, W1A, W1B, W2A, W2B, W3A, W3B, W4, C1A, C1B, C2, C3, C4, WRF-N, WRF-S, and the Standpipe.

Construction Materials Testing Consultant (CMT) - CMT consultant is currently working with CM&I staff to perform industry standard construction materials testing. Testing includes subgrade and backfill soil densities and concrete pavement properties and compressive strengths.

SURFACE WATER FACILITIES

Raw Water Intake Pump Station – Design is complete. Engineering consultant is providing construction phase services.

Surface Water Treatment Plant – Design is complete. Engineering consultant is providing construction phase services.

High Service Pump Station and Ground Storage Tanks – Design is complete. Engineering consultant is providing construction phase services.

Construction Administration and Inspection (CA&I) – The CA&I consultant for the SWF is currently working with the CMAR and SJRA staff to review submittals and RFI's, and provide constant field monitoring and inspection of the systems being installed.

Construction Materials Testing Consultant (CMT) - The CMT consultant for the SWF is currently working with the CMAR and CA&I staff to perform in-

dustry standard construction materials testing. Testing includes soil densities, compressive strength/properties of concrete placed; and welding, coatings and masonry testing.

Cathodic Protection - The cathodic protection consultant has completed their design effort for both the transmission line segments and the Surface Water Facilities.

2.2 STATE AGENCY COORDINATION

There was no activity with regard to the Texas Water Development Board (TWDB) or the Texas Commission on Environmental Quality (TCEQ) this month.

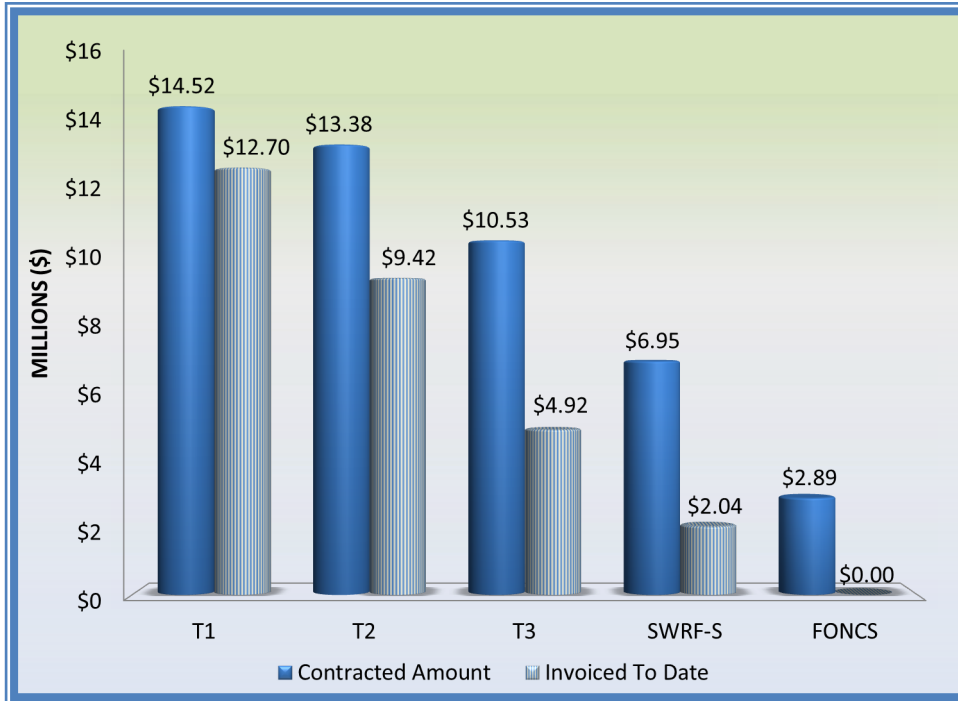


Pipes for Membrane Building at Surface Water Facility

2.0 PROJECT ACTIVITIES (CONTINUED)

2.3 SURFACE WATER TRANSMISSION SYSTEM PROJECT DATA

The month of March concluded with the installation of approximately 132,872 feet or 25.2 miles of various sized concrete coated steel pipe and PVC pipe along the majority of the transmission line segments. This represents approximately 49% of the total planned pipe to be installed throughout Montgomery County by or before January 1, 2016. The following graphs and charts show the progress of Transmission Line Segments T1, T2, T3, W1A, W1B, W2A, W2B, W3A, W3B, W4, C1A, C1B, C2, C3, C4, Surface Water Transmission North Water Receiving Facilities (SWRF-N), Surface Water Transmission South Water Receiving Facilities (SWRF-S), Standpipe and Fiber Optics Network Communication System (FONCS) thus far.



Surface Water Transmission System Total Progress To Date	
Total Contracted Amount	\$147,909,373.12
Total Invoiced To Date	\$66,361,818.46
Total % Complete Based on Invoice Amount	45%

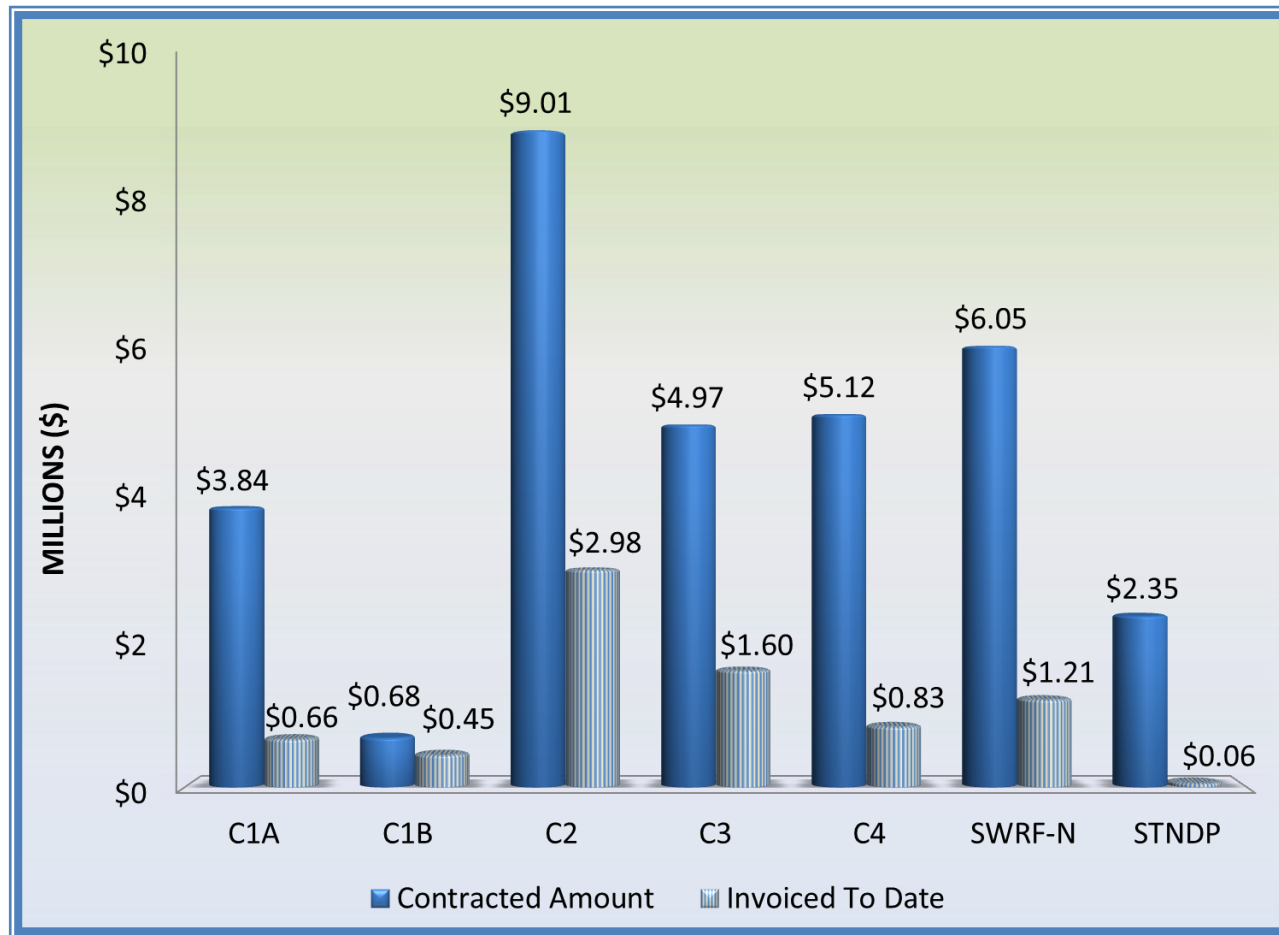
Segment	T1	T2	T3	SWRF-S	FONCS
Contracted Amount	\$14,521,937.14	\$13,383,928.25	\$10,534,218.00	\$6,952,400.00	\$2,885,432.35
Invoiced To Date	\$12,698,641.65	\$9,416,709.47	\$4,917,031.53	\$2,039,467.91	\$0.00
% Complete	87%	70%	47%	29%	0%

2.0 PROJECT ACTIVITIES (CONTINUED)



Segment	W1A	W1B	W2A	W2B	W3A	W3B	W4
Contracted Amount	\$8,222,000.50	\$7,213,544.50	\$16,340,258.02	\$16,161,600.00	\$7,880,206.00	\$8,124,485.50	\$3,656,604.23
Invoiced To Date	\$5,548,581.58	\$5,676,592.59	\$7,684,248.96	\$7,759,437.90	\$27,100.00	\$492,545.39	\$2,304,974.22
% Complete	67%	79%	47%	48%	1%	6%	63%

2.0 PROJECT ACTIVITIES (CONTINUED)



Segment	C1A	C1B	C2	C3	C4	SWRF-N	STANDPIPE
Contracted Amount	\$3,837,683.40	\$683,491.53	\$9,014,837.00	\$4,972,314.80	\$5,115,396.90	\$6,054,860.00	\$2,354,175.00
Invoiced To Date	\$663,200.51	\$445,519.47	\$2,984,793.61	\$1,604,336.52	\$833,726.02	\$1,205,911.13	\$59,000.00
% Complete	17%	65%	33%	32%	16%	20%	3%

2.0 PROJECT ACTIVITIES (CONTINUED)

2.4 SURFACE WATER TRANSMISSION SYSTEM CONSTRUCTION PROGRESS

Segment T1 - Contractor continued open-cut installation of 60-inch concrete coated steel pipe and installation of fiber optic conduit along McCaleb Road. Approximately 17,044 feet of 60-inch concrete coated steel pipe has been installed through this month. (See Exhibit 11, Page 45)

Segment T2 - Contractor continued open-cut installation of 54-inch concrete coated steel pipe, tunnel casing installation, fiber optic conduit installation, and site restoration along Fish Creek Thoroughfare. Approximately 20,916 feet of concrete coated steel pipe has been installed through this month. (See Exhibit 11, Page 47)

Segment T3 - Contractor continued open-cut installation of 54-inch concrete coated steel pipe along Fish Creek Thoroughfare. Approximately 9,607 feet of 54-inch concrete coated steel pipe has been installed through this month. (See Exhibit 11, Page 49)

Segment W1A - Contractor continued tunneling and open-cut installation of 48-inch concrete coated steel pipe along Research Forest Drive and completed fiber optic conduit installation along FM 2978. Approximately 21,133 feet of 48-inch concrete coated steel and 16-inch PVC pipe has been installed through this month. (See Exhibit 11, Page 51)

Segment W1B - Contractor continued open-cut installation of 42-inch concrete coated steel pipe, installation of fiber optic conduit, and asphalt shoulder installation along Research Forest Drive. Approximately 14,952 feet of 48-inch and 42-inch concrete coated steel pipe and 20-inch and 16-inch PVC pipe has been installed through this month. (See Exhibit 11, Page 53)

Segment W2A - Contractor installed approximately 7,909 feet of 42-inch concrete coated steel pipe, and 30-inch and 20-inch PVC pipe has been installed as of last month. (See Exhibit 11, Page 55)

Segment W2B - Contractor continued open-cut and trenchless installation of 30-inch PVC pipe, road pavement installation, and site restoration along Grogans Mill Road. Approximately 9,973 feet of 30-inch PVC pipe has been installed through this month. (See Exhibit 11, Page 57)

Segment W3A - Contractor continued submittal process, surveying, and tree clearing work. No pipe has been installed as of this month.

Segment W3B - Contractor continued submittal process, surveying, and tree clearing work. No pipe has been installed as of this month.

Segment W4 - Contractor continued 20-inch PVC pipe fusing and directional drilling operations and continued trenchless installation of 20-inch PVC pipe and fiber optic conduit. Approximately 6,071 feet of 20-inch PVC pipe has been installed through this month. (See Exhibit 11, Page 59)

Segment C1A - Contractor began receiving 42-inch concrete coated steel pipe along GRP Access Road and completed tunneling under Longmire Road. No pipe has been installed as of this month. (See Exhibit 11, Page 61)

Segment C1B - Contractor continued installation of fiber optic conduit and groundboxes, and completed hydrostatic testing, disinfection, and flushing along Longmire Road. Pipe installation was completed in February, totaling approximately 2,452 feet of 16-inch PVC pipe. (See Exhibit 11, Page 63)

Segment C2 - Contractor completed tree clearing operations and open-cut installation of 16-inch PVC pipe, continued installation of 30-inch concrete coated steel pipe and fiber optic conduit along Entergy easement and completed trenchless installation at FM 3083. Approximately 14,101 feet of 30-inch concrete coated steel pipe, 16-inch and 12-inch PVC pipe installed through this month. (See Exhibit 11, Page 65)

Segment C3 - Contractor continued open-cut installation of 20-inch PVC pipe and 16-inch PVC pipe and fiber optic conduit along Pollok Drive. Contractor began tree clearing and surveying along Silver Springs Road adjacent to Girl Scouts and UPRR property. Approximately 7,422 feet of 20-inch and 16-inch PVC pipe has been installed through this month. (See Exhibit 11, Page 67)

Segment C4 - Contractor continued installation of open cut installation of 24-inch PVC pipe along State Highway 75 and FM 830, and completed installation of 20-inch PVC pipe. Approximately 1,292 feet of 24-inch and 20-inch PVC pipe has been installed this month. (See Exhibit 11, Page 69)

2.0 PROJECT ACTIVITIES (CONTINUED)



Pipe unions stored in Warehouse Building at Surface Water Facility

SURFACE WATER RECEIVING FACILITIES

Surface Water Receiving Facilities—North - Contractor continued installation and successful testing of water pipe, performed facility layout, and completed excavation for building pads and placement of concrete pads at Conroe Water Plant Nos. 20, 21, and 22. Contractor continued facility layout and installation of fence and storm sewer pipe, and began building pad formwork at Conroe Water Plant No. 15. (See Exhibit 11, Page 71)

Surface Water Receiving Facilities—South - Contractor completed installation of interior electrical conduit and continued to install storm sewer pipe and inlets at SJRA Water Plant No. 2. Contractor continued to install underground mechanical, electrical and plumbing, fiber optic conduit and ground boxes, and cleaning ground storage tanks at SJRA Water Plant No. 3. Contractor completed underground mechanical, electrical and plumbing pipe at SJRA Water Plant No. 4. (See Exhibit 11, Page 73)

2.5 SURFACE WATER FACILITY CONSTRUCTION PROGRESS AND PROJECT DATA

Raw Water Intake - Interior masonry work continues and electrical conduit continues to be installed. Roof installation began.

Surface Water Treatment Plant - Construction activities continue at the Operations, Chemical, Power Supply, Generator, Pretreatment, Membrane, Backwash Equalization, Process Water Recovery Basin, Belt Filter Press Building, Blower Building, and GAC facilities. Electrical power, data, and lighting conduit installation continues at the structures. Structural concrete placement, lightweight concrete roof topping placement, roofing, structure decking, and masonry are the main activities still occurring on the site this month. Process piping installation continues at the GAC. Mechanical and plumbing is continuing in the Membrane Operations Building and commencing in the Belt Filter Press Building.

High Service Pump Station - Installation continues for the discharge bay piping and grating. Also continuing is the installation of electrical conduit and cable support, HVAC, plumbing, and cathodic protection. Roofing was completed this month.

Ground Storage Tanks - No major work occurred at the Ground Storage Tanks.

Site Work - Large diameter yard piping, potable water piping, sanitary sewer, manholes, junction boxes, and drain line installation continue to progress. Electrical duct bank installation and encasement continue.

The chart below represents Surface Water Facilities progress through the month of March.

Name of Project	Contracted Amount	Invoiced To Date	% Complete
Surface Water Facilities	\$190,704,740	\$97,362,711.00	51%

3.0 PROCUREMENT

3.1 SOLICITATIONS

No advertisements for solicitations occurred this month.

3.2 CONTRACT AWARDS

There were no contracts awarded this month.

3.3 PROCESS AND PROCEDURES

The GRP Program continues to utilize traditional procurement methods for consultant services and alternative project delivery methods in the procurement of contractor services.

3.4 LOOK AHEAD

The following list provides a very general look ahead at known and anticipated GRP Program professional services and construction contractor solicitations, contract awards, and/or contract/work order amendments. Solicitations may be combined, modified, or canceled, or time frames may be modified as deemed necessary.

- Work Order No. 10 for Repackaging Transmission Segment W3D
- Change Order No. 1 to Construction Contract for Surface Water Transmission Segment T2
- Change Order No. 2 to Construction Contract for Surface Water Transmission Segment T3
- Change Order No. 1 to Construction Contract for Surface Water Receiving Facilities North
- Change Order No. 1 to Construction Contract for Surface Water Receiving Facilities South
- Work Order No. 9 for Population of CMMS and development of an Electronic Operations Manual for Raw Water Intake and Pump Station at the GRP Surface Water Facilities
- Work Order No. 18 for Population of CMMS and development of an

Electronic Operations Manual for Water Treatment Plant at the GRP Surface Water Facilities

- Work Order No. 15 for Population of CMMS and development of an Electronic Operations Manual for High Service Pump Station and Ground Storage Facilities at the GRP Surface Water Facilities
- Supplemental Agreement to GRP Contract with City of Conroe
- Supplemental Agreement to GRP Contract with Southern Montgomery County MUD
- Professional Services Agreement and Work Order No. 1 for design of Instrumentation and Controls for GRP Transmission Segment W3C Receiving Facility
- Professional Services Agreement and Work Order No. 1 for Corrosion Protection for GRP Transmission Segment W3C



Actuators stored in Warehouse Building at Surface Water Facility

4.0 COST REPORT AND FINANCIAL CONSIDERATIONS

4.1 GRP PROGRAM AND GRP PROJECT CIP BUDGET(S)

Through this month the GRP Program remains under its construction cost estimate of \$500,000,000, and forecasts continue to indicate it will be completed under budget (see also subsection 4.6 and **Exhibit 2**). A summary of the GRP Program's CIP budget and cost considerations as reported to the GRP Review Committee and the SJRA Board of Directors is provided as attached **Exhibit 2**.

A summary of the SJRA GRP Division's Fiscal Year 2014 operating budget (revenue and expenditures) for the month of March is provided as **Exhibit 8**. The budget includes all normal and customary expenses for operating a utility-based, non-profit business, including debt service, and is developed annually for approval by the SJRA Board of Directors.

The SJRA Board of Directors has authorized bond funding for the GRP Program in the amount of \$552,250,358.49 (Net \$479,743,492.79); see also **Exhibit 4**. This funding allows the SJRA to secure all of the resources required to perform professional services, construction services, and procure long lead time equipment during the design phase of the GRP Program.

4.2 FINANCIAL REPORTS

Exhibit 5 illustrates the funding sources presently applied towards the GRP Program CIP budget for the month of March, which include the following:

- 1.) Texas Water Development Board's (TWDB) Water Infrastructure Fund (WIF);
- 2.) The sale of open market Special Project Revenue Bonds, Series 2011;
- 3.) TWDB Dfund, Series 2011A;
- 4.) TWDB Dfund, Series 2012; and
- 5.) TWDB Dfund, Series 2012A
- 6.) TWDB Dfund, Series 2013
- 7.) Operating Cash

Available funding after costs represents approximately 95.9% of the planned Program budget. Contracted commitments are summarized below in Table 4.1 for the month of March. The GRP Program's funding and forecasted expenditures are further detailed in attached **Exhibits 2, 3 and 4**.

Please note that financial reports do not include investment income.

4.3 INVOICES/APPLICATIONS FOR PAYMENT

The table below represents the GRP Program Consultant Invoices and/or Construction Contractor Applications for Payment paid through the end of the report month (Item F).

Table 4.1 - GRP Program Funding and Contracted Commitments Summary			
	Previous 2/28/2014	March 2014 Activity	Year to Date (Thru 3/31/14)
A. Approved Funding	552,334,533.32	0	552,334,533.32
B. Available Funding After Costs	479,830,196.70	0	479,830,196.70
C. Approved Contracts			
Phase I	456,328,437.04	3,671,696.00	460,000,133.04
Extensions	714,926.00	0	714,926.00
D. Project Close Out			
Phase I	(807,947.07)	0	(807,947.07)
Extensions	0	0	0
E. Uncontracted Funding	23,594,780.73	(3,671,696.00)	19,923,084.73
F. Invoices Paid *			
Phase I	209,541,958.99	19,869,630.10	229,411,589.09
Extensions	0	0	0
G. Remaining Funds *	270,288,237.71	(19,869,630.10)	250,418,607.61

*Invoices Paid -Figures reflect actual funds paid out as of period end dates noted.

*Remaining Funds- Excludes net investment income



4.0 COST REPORT AND FINANCIAL CONSIDERATIONS (CONTINUED)

4.4 CONTRACT AMENDMENTS AND CHANGE ORDERS

Each of the GRP Program agreements, work orders, and amendments listed in Section 3.2 were presented at the GRP Review Committee and the SJRA Board of Directors meetings this month. Each item below was authorized by the SJRA Board of Directors for execution by the SJRA General Manager.

- Change Order No. 1 to Construction Contract for Surface Water Transmission Line Segment T3
- Amendment No. 1 to Work Order No. 1 for GRP Rate Study

4.5 CLAIMS

If and when claims are received, they will be addressed by the GRP Program Team.

4.6 CIP CASH FLOW

The GRP Program CIP cash flow through calendar year 2015 reflects known expenditures through this month as seen in Table 4.1. Estimates for future expenditures are included in [Exhibit 2](#). All active and currently identified future GRP Program projects and initiatives are included in the cash flow. A graph of forecasted monthly expenditures from the referenced cash flow is attached as [Exhibit 3](#).

4.7 CIP BUDGET ESTIMATES AT COMPLETION

4.7.1 GRP Program

The **total gross funds** (including capitalized interest) required to execute Phase I of the GRP Program are currently estimated at \$564,335,358.49. Additionally, all current GRP Program contracts, including their respective SJRA Board of Director's approved budgeted amounts are listed in [Exhibit 6](#).

4.7.2 GRP Projects

The GRP Program projects remained within their approved contract budgets this month. [Exhibit 6](#) indicates each active GRP Program project and GRP Program contract.

4.8 LAND ACQUISITION

The GRP Program Team, with the support of its various land acquisition consultants, continued to make progress in acquiring the land and easements necessary for the surface water transmission system. Three easements were acquired in March; all three related to Segment W3. Final negotiations to acquire the remaining easements throughout the system are at or near final stages of completion. A cumulative summary of easement acquisition activity is provided in [Exhibit 7](#).



View from below of roofing installation at Raw Water

5.0 QUALITY ASSURANCE

5.1 FINAL DESIGN

Final design is complete for Surface Water Treatment Plant, Transmission Lines, Standpipe, Fiber Optic Communication Network, and Water Receiving Facilities. Design of permanent access road is underway and the site landscaping will occur in the future.

5.2 PRE-CONSTRUCTION

There were no pre-construction meetings held this month.

5.3 CONSTRUCTION

Quality Assurance efforts by SJRA construction inspectors, as well as the CA&I consultant continued this month on the SWF project. Virtually every building on the SWF project site is progressing timely toward meeting the established SWF substantial completion date. Quality Assurance efforts include regular visits to the project site to monitor and document observed progress. Similar Quality Assurance efforts by SJRA construction inspectors and the CM&I consultant continued this month on the transmission lines.

Left and Below: Inside and outside views of the Blower Building at Surface Water Facility



6.0 EXHIBITS

Exhibit 1 - GRP Program Schedule

Exhibit 2 - GRP Program Estimate-At-Completion

Exhibit 3 - GRP Program Monthly Forecasted Expenditures

Exhibit 4 - GRP Program Fund Data

Exhibit 5 - Monthly GRP Program Funding Report

Exhibit 6 - GRP Program Current Authorizations

Exhibit 7 - Land Acquisition Summary

Exhibit 8 - GRP Schedule of Revenues & Expenses—Actual & Budget

Exhibit 9 - GRP Program Monthly Meeting Log

Exhibit 10 - Surface Water Facilities (SWF) Construction Photos

Exhibit 11 - Transmission Line System Construction Photos

Exhibit 12 - Surface Water Standpipe Construction Photos



Delivery of belt press and generators at Surface Water Facilities

Exhibit 1 - GRP Program Schedule

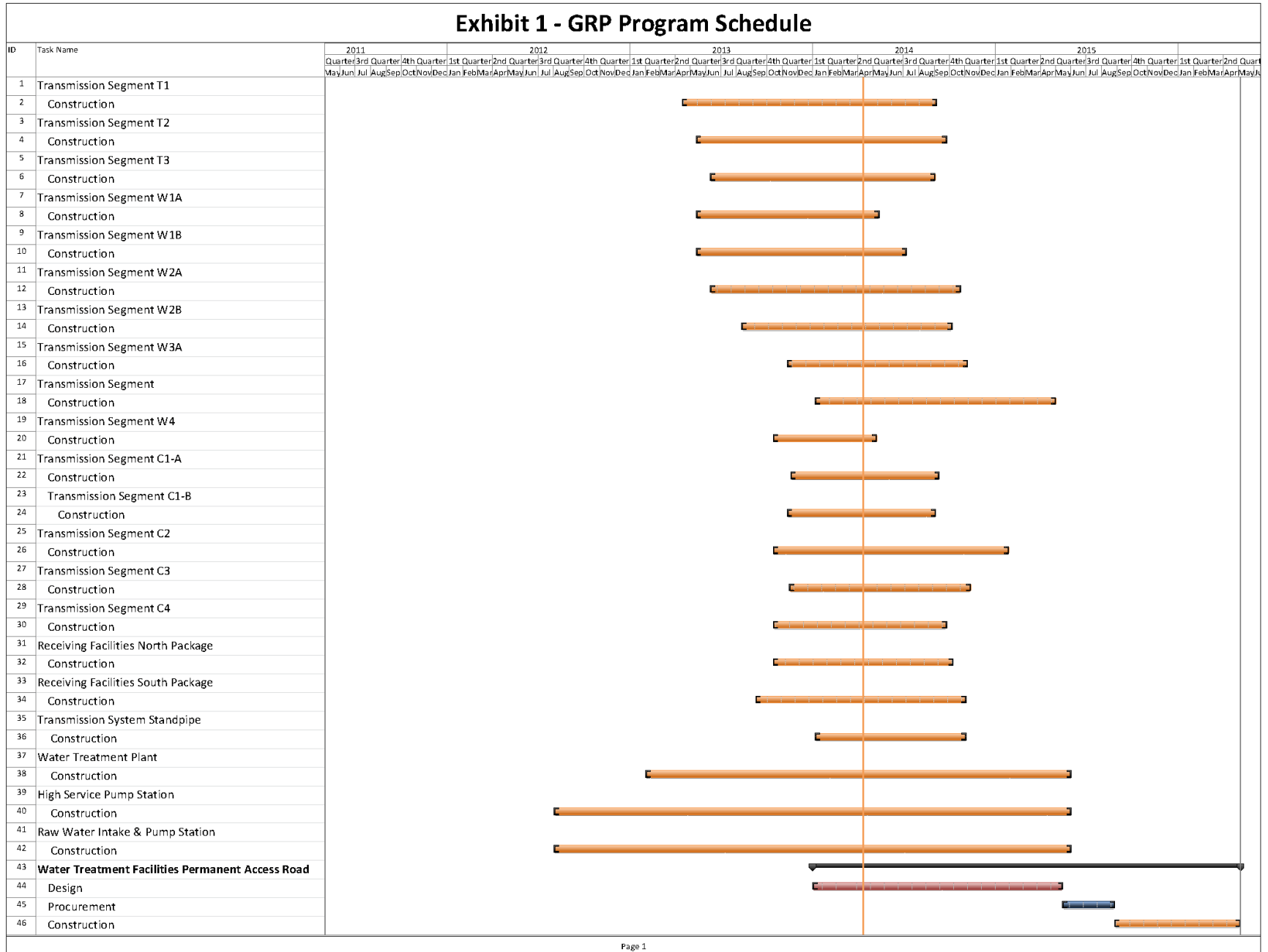


Exhibit 2

GRP Program Estimate-At-Completion As of March 31, 2014

SERVICES	ESTIMATE-AT-COMPLETION
Pre-Engineering Phase Services (GRP Development, Environmental Studies, Pilot Plant, Surface Water Treatment Plant Site Survey)	\$ 4,702,612
Engineering Phase Services (Planning, Preliminary Engineering, Final Engineering, Geotechnical, Survey, Metes & Bounds, Subsurface Utility Investigation, Environmental)	\$ 43,760,352
Construction Phase Services (Engineering Services During Construction, Construction Management & Inspection [Transmission System], Construction Administration & Inspection [SWF], Material Testing)	\$ 28,803,757
Construction (Surface Water Transmission System, Raw Water Intake and Pump Station, Surface Water Treatment Plant, High Service Pump Station and Ground Storage Tanks, Surface Water Receiving Facilities, Infrastructure, Buildings, Roadways, Site Security, Access Roadways)	\$ 388,736,618
Transmission Segment C1 - Construction	\$ 4,747,234
Transmission Segment C2 - Construction	\$ 9,240,208
Transmission Segment C3 - Construction	\$ 5,220,931
Transmission Segment C4 - Construction	\$ 5,371,167
Transmission Segment T1 - Construction	\$ 14,884,986
Transmission Segment T2 - Construction	\$ 14,053,125
Transmission Segment T3 - Construction	\$ 11,060,929
Transmission Segment W1 - Construction	\$ 15,821,434
Transmission Segment W2 - Construction	\$ 33,718,444
Transmission Segment W3 - Construction	\$ 16,804,928
Transmission Segment W4 - Construction	\$ 3,748,019
Transmission System Standpipe	\$ 2,486,884
Receiving Facilities - Construction	\$ 16,904,558
Surface Water Facilities CMAR (GMP)	\$ 190,704,740
Transmission System Fiber Optic - Construction	\$ 3,029,704
Permanent Access Roadway Construction	\$ 7,705,000
Building No. 1; Access Road; Vegetative Buffer; Construction Materials Testing; SWF Site Vegetation Management; Sanitary Sewer/Access Rd. Relocation	\$ 4,399,773
Other Offsite Construction (Transmission Line Utility Relocations, Receiving Facility Improvements)	\$ 21,800,706
Non-Project Specific Contingency	\$ 7,033,850
Program Management (GRP Program Management, Survey, Geotechnical, Transient, Corrosion, Legal Consultants)	\$ 10,940,954
Land Acquisition (Legal, Appraisal, Title Research, Land Acquisition Consultants) ⁽¹⁾	\$ 13,558,302
Total ⁽²⁾:	\$ 490,502,595

⁽¹⁾ Includes revisions to land acquisition cost estimates, land cost, and recategorizing of contingency.

⁽²⁾ Bond issuance costs are not included.



Exhibit 3

GRP Program Monthly Forecasted Expenditures As of March 31, 2014

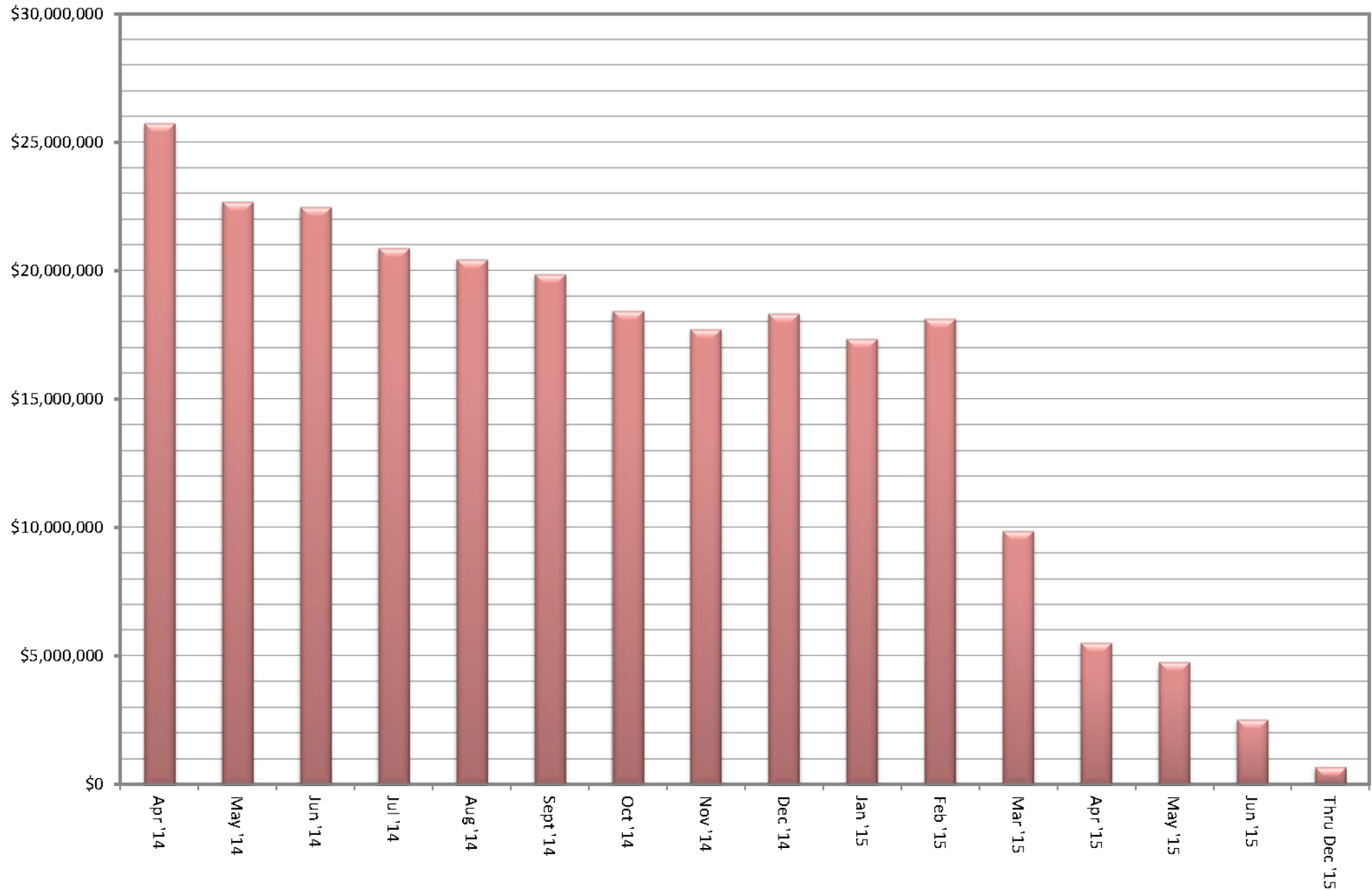


Exhibit 4

GRP Program Fund Data As of March 31, 2014

Funding Source	Amount Authorized by Board To-Date	Interest Rate	Bond Costs	Capitalized Interest	Debt Service Reserve Fund	Net Amount Currently Available	Pending Funding Source
TWDB WIF Bond Issue	\$ 21,500,000.00	.854% - 2.706%	\$ 470,337.08	\$ -	\$ -	\$ 21,029,662.92	
Open Market Bond Issue (Series 2011)	\$ 83,430,358.49	3% - 5.25%	\$ 2,049,764.39	\$ 7,858,241.52	\$ -	\$ 73,522,352.58	
TWDB DFund Series 2011A	\$ 67,470,000.00	1.22% - 4.97%	\$ 751,195.33	\$ 5,166,233.00	\$ 3,859,151.00	\$ 57,693,420.67	
TWDB DFund Series 2012	\$ 175,000,000.00	1.17% - 4.62%	\$ 971,769.13	\$ 12,869,175.00	\$ -	\$ 161,159,055.87	
TWDB DFund Series 2012A	\$ 165,000,000.00	1.26% - 4.62%	\$ 952,269.99	\$ 14,139,669.00	\$ 16,500,000.00	\$ 133,408,061.01	
TWDB Dfund Series 2013	\$ 39,850,000.00	4.50%	\$ 631,279.08	\$ 3,214,292.00	\$ 3,073,489.18	\$ 32,930,939.74	
Subtotal Approved Amounts	\$ 552,250,358.49		\$ 5,826,615.00	\$ 43,247,610.52	\$ 23,432,640.18	\$ 479,743,492.79	
Future Series 2014 (Est.)	\$ 12,085,000.00	4.54%	\$ 321,200.00	\$ 1,004,698.00	\$ -	\$ -	\$ 10,759,102.00
Subtotal Future Amounts	\$ 12,085,000.00		\$ 321,200.00	\$ 1,004,698.00	\$ -	\$ -	\$ 10,759,102.00
Totals	\$ 564,335,358.49		\$ 6,147,815.00	\$ 44,252,308.52	\$ 23,432,640.18	\$ 479,743,492.79	\$ 10,759,102.00

Notes:

1. These values do not include investment income.
2. Green items are estimates only.
3. Series 2011 bond costs include \$681,132.45 for bond insurance and \$459,709.50 for underwriter's discount.



Exhibit 5

Monthly GRP Program Funding Report

Fiscal Year 2014

Through March 2014

	TWDB WIF Bond Issue	Open Market Bond Issue (Series 2011)	TWDB Dfund (Series 2011A)	TWDB Dfund (Series 2012)	TWDB Dfund (Series 2012A)	TWDB Dfund (Series 2013)	Operating (Cash)	Totals
A. Program Budget								
Bond Issue Amount	\$ 21,500,000.00	\$ 83,430,358.49	\$ 67,470,000.00	\$ 175,000,000.00	\$ 165,000,000.00	\$ 39,850,000.00		\$ 552,250,358.49
Operating Funds Commitment							\$ 84,174.83	\$ 84,174.83
Total Investment	\$ 21,500,000.00	\$ 83,430,358.49	\$ 67,470,000.00	\$ 175,000,000.00	\$ 165,000,000.00	\$ 39,850,000.00	\$ 84,174.83	\$ 552,334,533.32
B. Contracted Costs								
Phase I								
Contracts Completed	\$ 17,811,662.84	\$ 19,399,783.23	\$ 6,895,212.86	\$ -	\$ 611,352.00	\$ 3,721,564.70	\$ 14,407.80	\$ 48,453,983.43
Current Contract Values	\$ 3,199,479.00	\$ 38,184,950.43	\$ 48,548,704.30	\$ 161,159,055.87	\$ 126,551,191.11	\$ 27,662,126.48	\$ 69,767.03	\$ 405,375,274.22
Change Orders	\$ -	\$ 4,432,181.12	\$ 440,320.25	\$ -	\$ 1,298,374.02	\$ -	\$ -	\$ 6,170,875.39
Project Close Out	\$ (315,554.78)	\$ (397,783.46)	\$ (29,956.96)	\$ -	\$ (64,626.72)	\$ (25.15)	\$ -	\$ (807,947.07)
Phase I Total:	\$ 20,695,587.06	\$ 61,619,131.32	\$ 55,854,280.45	\$ 161,159,055.87	\$ 128,396,290.41	\$ 31,383,666.03	\$ 84,174.83	\$ 459,192,185.97
Extensions								
Contracts Completed	\$ -	\$ -	\$ -	\$ -	\$ -	\$ -	\$ -	\$ -
Current Contract Values	\$ -	\$ 714,926.00	\$ -	\$ -	\$ -	\$ -	\$ -	\$ 714,926.00
Change Orders	\$ -	\$ -	\$ -	\$ -	\$ -	\$ -	\$ -	\$ -
Project Close Out	\$ -	\$ -	\$ -	\$ -	\$ -	\$ -	\$ -	\$ -
Extensions Total:	\$ -	\$ 714,926.00	\$ -	\$ -	\$ -	\$ -	\$ -	\$ 714,926.00
C. Expenditures								
Phase I								
Paid Previous Fiscal Years	\$ 20,445,604.55	\$ 41,810,521.31	\$ 13,516,375.89	\$ 35,745,194.60	\$ 2,741,339.59	\$ -	\$ -	\$ 114,259,035.94
Paid Current Fiscal Year	\$ 95,154.81	\$ 5,949,222.87	\$ 12,491,989.44	\$ 39,999,974.25	\$ 50,734,851.62	\$ 5,865,180.07	\$ 16,180.09	\$ 115,152,553.15
Phase I Total:	\$ 20,540,759.36	\$ 47,759,744.18	\$ 26,008,365.33	\$ 75,745,168.85	\$ 53,476,191.21	\$ 5,865,180.07	\$ 16,180.09	\$ 229,411,589.09
Extensions								
Paid Previous Fiscal Years	\$ -	\$ -	\$ -	\$ -	\$ -	\$ -	\$ -	\$ -
Paid Current Fiscal Year	\$ -	\$ -	\$ -	\$ -	\$ -	\$ -	\$ -	\$ -
Extensions Total:	\$ -	\$ -	\$ -	\$ -	\$ -	\$ -	\$ -	\$ -
Issuance Costs	\$ 470,337.08	\$ 2,049,764.39	\$ 751,195.33	\$ 971,769.13	\$ 952,269.99	\$ 628,750.00	\$ -	\$ 5,824,085.92
Debt Service Reserve Fund	\$ -	\$ -	\$ 3,859,151.00	\$ -	\$ 16,500,000.00	\$ 3,073,489.18	\$ -	\$ 23,432,640.18
Capitalized Interest	\$ -	\$ 7,858,241.52	\$ 5,166,233.00	\$ 12,869,175.00	\$ 14,139,669.00	\$ 3,214,292.00	\$ -	\$ 43,247,610.52
D. Remaining								
Uncontracted Funds	\$ 334,075.86	\$ 11,188,295.26	\$ 1,839,140.22	\$ (0.00)	\$ 5,011,770.60	\$ 1,549,802.79	\$ -	\$ 19,923,084.73
Funding Balance *	\$ 488,903.56	\$ 25,762,608.40	\$ 31,685,055.34	\$ 85,413,887.02	\$ 79,931,869.80	\$ 27,068,288.75	\$ 67,994.74	\$ 250,418,607.61

*Excluding net investment income



Exhibit 6

GRP Program Current Authorizations As of March 31, 2014

Surface Water Transmission System - Consultant Services

Project	Firm	Amount Authorized by Board
T1	Jones & Carter	\$ 2,202,879.75
T2	Klotz Associates	\$ 1,878,727.49
T3	Espey	\$ 1,892,322.47
W1	LAN	\$ 2,729,523.15
W2	Binkley & Barfield	\$ 3,252,056.39
W3	Cobb Fendley	\$ 3,932,308.00
W4	LJA	\$ 1,366,335.57
C1	Dannenbaum	\$ 961,635.69
C2	Schaumburg & Polk	\$ 1,418,951.72
C3	Kimley Horn	\$ 897,638.59
C4	RG Miller	\$ 387,701.04
Fiber Optic	EMA	\$ 832,533.04
WRFs	Malcom Pirnie/Arcadis	\$ 2,680,366.57
CM&I	Kellog Brown & Root	\$ 8,657,135.48
Subtotal - Surface Water Transmission System		\$ 33,090,114.95

Surface Water Facilities - Consultant Services

Project	Firm	Amount Authorized by Board
WTP	HDR Engineering	\$ 18,583,442.54
HSPS	AECOM	\$ 4,904,748.77
StandPipe	AECOM	\$ 192,235.38
RWI&PS	Freese & Nichols	\$ 3,954,773.35
CA&I	CDMSmith	\$ 5,348,633.00
Subtotal - Surface Water Facilities		\$ 32,983,833.04

Program Consultant Services & Other Projects

Project	Firm	Amount Authorized by Board
Program Management	Brown & Gay	\$ 10,695,226.55
Program Survey	Landtech	\$ 514,524.00
Program Geotechnical	Raba Kistner	\$ 145,260.00
Prog Transient Analyses	AECOM	\$ 284,178.11
Access Rd/Misc Service	ACES	\$ 857,366.25
SWF Surveying	S&V Surveying	\$ 66,875.00
Land Acq	KDM	\$ 431,592.70
Land Acq	PAS	\$ 1,413,334.88
Program Environmental	Half Associates	\$ 1,063,698.87
Program Fiber Optics	EMA	\$ 832,533.04
Program Corrosion	V&A Consulting Engineers	\$ 866,676.00
Program Legal Services & Projects	Multiple	\$ 5,729,235.44
Subtotal - Program Consultant Services & Other Projects		\$ 22,900,500.84

Surface Water Transmission System Extensions - Consultant Services

Project	Firm	Amount Authorized by Board
MUD99/115	IDS Engineering Group	\$ 293,710.00
MUD99/115	Andrews & Kurth - x	\$ 100,000.00
MUD99/115	PAS - x	\$ 200,000.00
MUD99/115	Brown & Gay - x	\$ 121,216.00
Subtotal - Surface Water Facilities		\$ 714,926.00



Exhibit 6 (con't)

GRP Program Current Authorizations As of March 31, 2014

Active or Completed Construction Contracts

Project	Firm	Amount Authorized by Board
GRP Bldg No. 1	Brookstone	\$ 2,008,673.00
Bldg. No. 1/Aqua Tx CMT	Aviles Engineering	\$ 64,343.15
Landscape Buffer	Key-Scape Landscape	\$ 53,090.00
Temp Access Road	Lindsey Construction	\$ 977,583.60
Access Road CMT	Terracon Consultants	\$ 10,359.70
Access Road Overlay and Detention	AAA Asphalt	\$ 412,284.59
Access Road Landscape	TreeScapes	\$ 34,165.00
Aqua Texas Sewer	Randy Roan Construction	\$ 535,181.17
Bldg No. 1 Fiber Line	Preferred Technologies	\$ 231,157.56
Surface Water Plant (CMAR)	McCarthy	\$ 190,704,740.00
SWF CMT	Geotest	\$ 1,976,659.00
Transmission Sytem Utility Relocations	Various	\$ 2,125,610.96
Transmission System CMT (T3, W1, W2, W3, W4)	Aviles	\$ 1,601,330.00
Transmission System CMT (T1, T2, C1, C2, C3, C4)	Terracon	\$ 1,006,711.25
Transmission Segment T1	S.J. Louis Construction of Texas Ltd	\$ 14,521,937.14
Transmission Segment T2	Texas Sterling Construction Company	\$ 13,383,928.25
Transmission Segment T3	S.J. Louis Construction of Texas Ltd	\$ 10,534,218.00
Transmission Segment C1A	Garney Companies, Inc.	\$ 3,837,683.40
Transmission Segment C1B	E.P. Brady, LTD.	\$ 683,491.53
Transmission Segment C2	Garney Companies, Inc.	\$ 9,014,837.00
Transmission Segment C3	E.P. Brady, LTD.	\$ 4,972,314.80
Transmission Segment C4	BRH-Garver Construction, L.P.	\$ 5,115,396.90
Transmission Segment W1A	Huff & Mitchell, Inc.	\$ 8,222,000.50
Transmission Segment W1B	Texas Sterling Construction Company	\$ 7,213,544.50
Transmission Segment W2A	Texas Sterling Construction Company	\$ 16,340,258.02
Transmission Segment W2B	Texas Sterling Construction Company	\$ 16,161,600.00
Transmission Segment W3A	Huff & Mitchell, Inc.	\$ 7,880,207.50
Transmission Segment W3B	Garney Companies, Inc.	\$ 8,124,485.50
Transmission Segment W4	Huff & Mitchell, Inc.	\$ 3,656,604.23
Receiving Facilities South	CSA	\$ 6,952,400.00
Receiving Facilities North	Archer Western	\$ 6,054,860.00
Transmission SCADA - Fiber Optic Construction	Fisk Electric Company	\$ 2,885,432.35
Miscellaneous	Other Construction Contracts, Permits, Fees, etc.	\$ 305,163.05
Subtotal - Construction Contracts		\$ 347,602,251.65

Totals

	Amount Authorized by Board
Surface Water Transmission System - Consultant Services	\$ 33,090,114.95
Surface Water Facilities - Consultant Services	\$ 32,983,833.04
Program Consultant Services & Other Projects	\$ 22,900,500.84
Surface Water Transmission System Extensions - Consultant Services	\$ 714,926.00
Active or Completed Construction Contracts	\$ 347,602,251.65
Total	\$ 437,291,626.48



Exhibit 7

GRP Program Land Acquisition Summary As of March 31, 2014

Project	Anticipated Number of Easements to Acquire	Easements Acquired This Month	Total Easements Acquired and Filed	Total Easements Remaining to be Finalized ¹
Transmission System Segment T1	59	0	58	1
Transmission System Segment T2	0	0	0	0
Transmission System Segment T3	18	0	13	5
Transmission System Segment C1	19	0	19	0
Transmission System Segment C2	80	0	78	2
Transmission System Segment C3	34	0	21	13
Transmission System Segment C4	4	0	4	0
Transmission System Segment W1	32	0	32	0
Transmission System Segment W2	10	0	10	0
Transmission System Segment W3	177	3	173	4
Transmission System Segment W4	9	0	9	0
Totals:	442	3	417	25

¹ Note: Includes final cleanup of title on other legal issues, while right of entry may have been required



Exhibit 8

San Jacinto River Authority Groundwater Reduction Plan

Schedule of Revenues & Expenses—Actual and Budget

For the Seven Months Ending March 31, 2014

	Mar	Fiscal Year To Date			Fiscal Budget		
	Actual	Actual	Budget	Variance	% Variance	Total Year Budget	Actual YTD % of Total Year Budget
OPERATING REVENUES							
GRP pumping fees	\$ 1,713,322	\$ 14,927,314	\$ 17,160,813	\$ (2,233,500)	(13%)	\$ 34,118,874	44%
TOTAL OPERATING REVENUES	\$ 1,713,322	\$ 14,927,314	\$ 17,160,813	\$ (2,233,500)	(13%)	\$ 34,118,874	44%
OPERATING EXPENSES							
Payroll & employee benefit expenses	\$ 203,778	\$ 1,579,397	\$ 2,686,364	\$ 1,106,967	41%	\$ 4,644,900	34%
Professional fees	13,694	280,204	474,131	193,927	41%	813,000	34%
Purchased & contracted services	6,514	71,457	139,925	68,468	49%	239,871	30%
Supplies, materials & utilities	19,286	3,301,815	3,494,946	193,131	6%	3,747,401	88%
Maintenance repairs, parts & rentals	1,985	9,935	11,260	1,325	12%	17,160	58%
General & administration	53,986	351,221	494,956	143,735	29%	850,563	41%
TOTAL OPERATING EXPENSES	\$ 299,244	\$ 5,594,028	\$ 7,301,582	\$ 1,707,554	23%	\$ 10,312,895	54%
NON-OPERATING REVENUES & EXPENSES							
Interest on investments	\$ 76,053	\$ 373,685	\$ 408,183	\$ (34,498)	(8%)	\$ 696,936	54%
Other revenues	-	2,129	-	2,129	100%	-	0%
Interest expense	(1,791,964)	(12,413,139)	(6,994,530)	(5,418,609)	77%	(14,844,597)	84%
TOTAL NON-OPERATING (EXCLUDING ITEMS NOT BUDGETED)	\$ (1,715,911)	\$ (12,037,325)	\$ (6,586,347)	\$ (5,450,978)	83%	\$ (14,147,661)	85%
NET INCOME (LOSS) (EXCLUDING ITEMS NOT BUDGETED)	\$ (301,833)	\$ (2,704,039)	\$ 3,272,884	\$ (5,976,923)	(183%)	\$ 9,658,318	(28%)
NON-OPERATING REVENUES & EXPENSES (NOT BUDGETED)							
Depreciation	\$ (22,628)	\$ (158,239)	\$ -	\$ (158,239)	100%	\$ -	0%
Amortized debt issuance expense	-	-	-	-	0%	-	0%
TOTAL NON-OPERATING (NOT BUDGETED)	\$ (22,628)	\$ (158,239)	\$ -	\$ (158,239)	100%	\$ -	0%
NET INCOME (LOSS) (BUDGETED AND NOT BUDGETED)	\$ (324,460)	\$ (2,862,278)	\$ 3,272,884	\$ (6,135,162)	(187%)	\$ 9,658,318	(30%)

*The Budget is a cash basis budget however the actual interest expense is accrued monthly. Seven months of 2012A Bond payments were funded by the bond issue and are reflected on the Balance Sheet in Restricted Assets Debt Service Funds, Investments. The Interest Expense appears over-budget due to not budgeting for the pre-funded bond payments.



Exhibit 8 (con't)

GRP Division

Clarification of Actual & Budget Variances For Seven Months Ending March 31, 2014

Category	YTD - Driver	March 2014	FYTD 2014
GRP Pumping Fees	Usage variance due to weather conditions.	(348)	(2,234)
Payroll and related expenses	Budgeted positions not filled as scheduled	161	1,107
Professional Fees	Professional fees less than budgeted.	52	194
Purchased & Contracted Services	Purchased and contracted services less than budgeted.	13	68
Supplies, Materials, Utilities, Maintenance, Repairs, Parts & Rentals	Fuel, office supplies, phones, recruiting and misc. expenses less than budgeted.	24	159
	Reservation Fee-COH 2013 Actuals	-	(123)
	Additional Water Supply	-	157
	Maintenance repairs, parts & rentals expense less than budgeted.	-	2
General & Administration	Allocated labor and related expenses less than budgeted, anticipated a quicker rate of growth than has been actualized.	17	144
Non-Operating	Interest/Investment Income	18	(32)
	Depreciation expense	(22)	(158)
	Bond Issuance Cost Amort expense	-	-
	Bond interest expense	(727)	(5,419)
		<u>(812)</u>	<u>(6,135)</u>



Exhibit 9

GRP Program Monthly Meeting Log For March 2014

Meeting	Subject of Meeting	Location	Date	Participants
GRP Review Committee Meeting	Board Agenda Items	G&A Building	3/24/2014	GRP Review Committee, SJRA Staff and General Public
Southern Montgomery MUD Meeting	SMCMUD	SMC MUD Office	3/24/2014	GRP Review Committee, SJRA Staff and General Public
Woodforest Homeowners Association Meeting	GRP Program	Woodforest Office	3/25/2014	SJRA Staff, GRP Program Team, and General Public
SJRA Board of Directors Meeting	Board Agenda Items	G&A Building	3/27/2014	SJRA Board of Directors, SJRA Staff and General Public
Lake Conroe Watershed Protection Plan	Lake Conroe Watershed	G&A Building	3/28/2014	SJRA Staff and Consultant Team
CMAR Coordination Meeting	CMAR	GRP Building	Weekly	SJRA Staff, GRP Program Team and Consultants
Construction Administration and Inspection Meetings	CA&I	GRP Building	Weekly	SJRA Staff, GRP Program Team and CA&I Team
Land Acquisition Conference Calls	Land Acquisition	GRP Building	Weekly	Andrews Kurth and SJRA Staff



Exhibit 9 (con't)

GRP Program Monthly Meeting Log For March 2014

Meeting	Subject of Meeting	Location	Date	Participants
Water Receiving Facilities-South Progress Meeting	WRF-S	GRP Building	Monthly	SJRA Staff, GRP Program Team and Consultant Team
Water Receiving Facilities-North Progress Meeting	WRF-N	GRP Building	Monthly	SJRA Staff, GRP Program Team and Consultant Team
Segments W1A and W1B Progress Meetings	Segments W1A and W1B	GRP Building	Monthly	SJRA Staff, GRP Program Team and Consultant Team
Segments W2A and W2B Progress Meetings	Segments W2A and W2B	GRP Building	Weekly	SJRA Staff, GRP Program Team and Consultant Team
Segments T1, T2 and T3 Progress Meetings	Segments T1, T2 and T3	GRP Building	Monthly	SJRA Staff, GRP Program Team and Consultant Team
Segments W3, W4, C1, C2, C3, and C4 Monthly Status Meetings	Segments W3, W4, C1, C2, C3, C4	GRP Building	Monthly	SJRA Staff, GRP Program Team and Consultant Team
Standpipe Progress Meeting	Standpipe	GRP Building	Monthly	SJRA Staff, GRP Program Team and Consultant
Surface Water Facility Progress Meeting	Surface Water Facilities	GRP Building	Bi-Monthly	SJRA Staff, CMAR, CA&I and Consultant Team



Surface Water Facilities Construction Photos



EXHIBIT 10 SWF Construction Photos



EXHIBIT 10 (con't) SWF Construction Photos

Finished Water Process Structures



❶ *Roof deck installation at the Raw Water Intake and Pump Station*

EXHIBIT 10 (con't) SWF Construction Photos

Water Treatment Process Structures



② *Access walkway installation at the Pretreatment Facility*

EXHIBIT 10 (con't) SWF Construction Photos

Water Treatment Process Structures



3 *Installation of membrane equipment racks and piping in the Membrane Building*

EXHIBIT 10 (con't) SWF Construction Photos

Water Treatment Process Structures



③ *Mechanical and plumbing rough-in at the Membrane Building*

EXHIBIT 10 (con't) SWF Construction Photos

Water Treatment Process Structures



④ *Leak testing contact basins in the GAC Building*

EXHIBIT 10 (con't) SWF Construction Photos

Finished Water Process Structures



5 Installation of electrical room equipment at High Service Pump Station

EXHIBIT 10 (con't) SWF Construction Photos

Water Treatment Process Structures



⑥ *Masonry installation at Blower Building*

EXHIBIT 10 (con't) SWF Construction Photos

Process Residual Treatment Disposal Structures



① *First floor mechanical installation in the Dewatering Building*

EXHIBIT 10 (con't) SWF Construction Photos

Process Residual Treatment Disposal Structures



① *Second floor masonry installation in the Dewatering Building*

EXHIBIT 10 (con't) SWF Construction Photos

Process Residual Treatment Disposal Structures



⑧ *Concrete column installation at the Sludge Thickeners*

EXHIBIT 10 (con't) SWF Construction Photos

Operational Structures



9 *Outside view of Operations Building*

EXHIBIT 10 (con't) SWF Construction Photos

Operational Structures



⑨ *Masonry and structural steel installations at the Operations Building*

EXHIBIT 10 (con't) SWF Construction Photos

Operational Structures



9 *Mechanical and plumbing rough-in at the Operations Building*

EXHIBIT 10 (con't) SWF Construction Photos

Operational Structures



⑩ *Main transformer installation in progress at Electrical Facilities*

EXHIBIT 10 (con't) SWF Construction Photos *Operational Structures*



10 Backup Generator installation in progress at Electrical Facilities

Transmission Line System Construction Photos



EXHIBIT 11 Transmission Line System Construction Photos

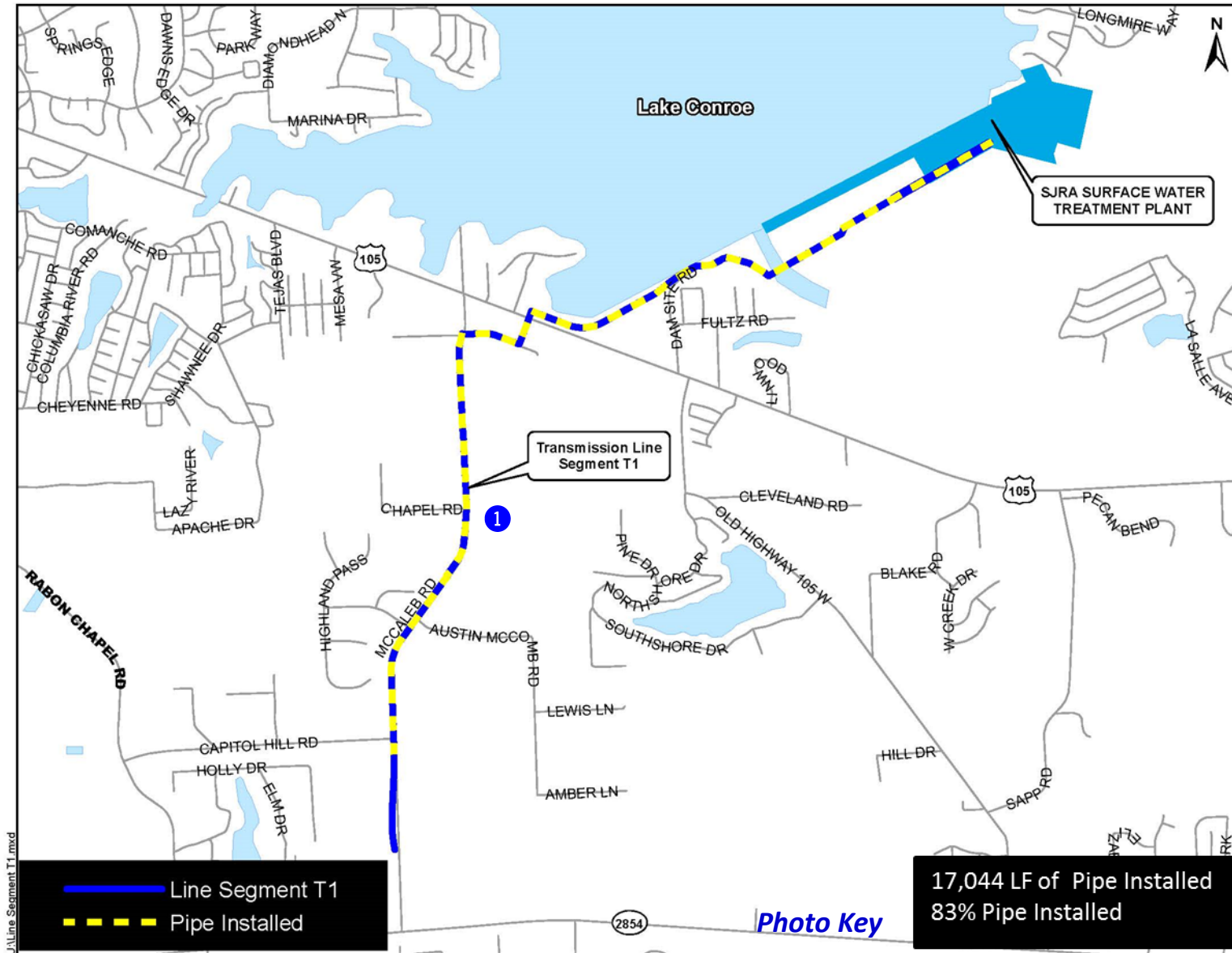


EXHIBIT 11 (con't) Transmission Line System Construction Photos



① *Segment T1 - Asphalt pavement repairs along McCaleb Road*

EXHIBIT 11 (con't) Transmission Line System Construction Photos

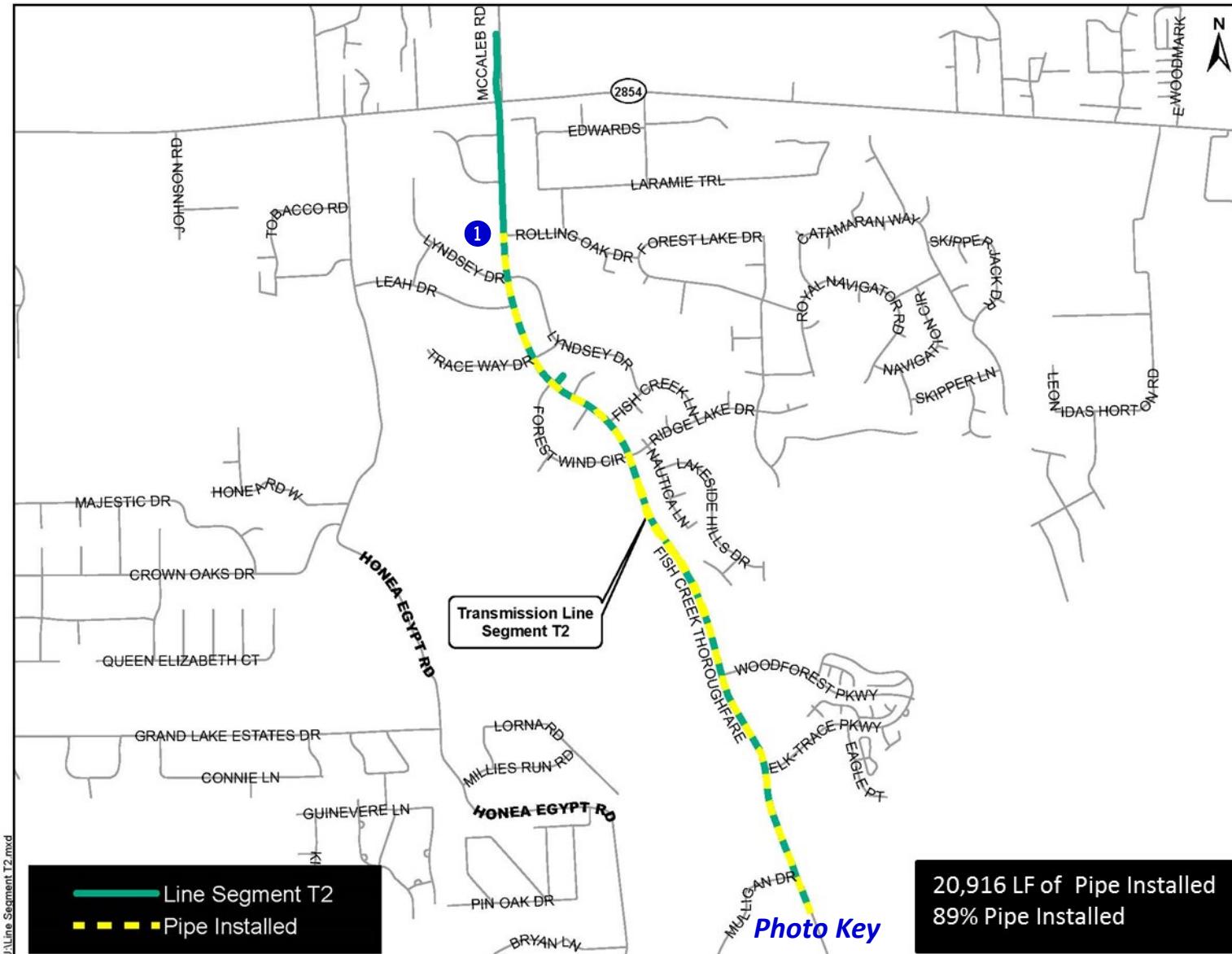


EXHIBIT 11 (con't) Transmission Line System Construction Photos



① *Segment T2 - 54-inch pipe installation along Fish Creek Thoroughfare*

EXHIBIT 11 (con't) Transmission Line System Construction Photos

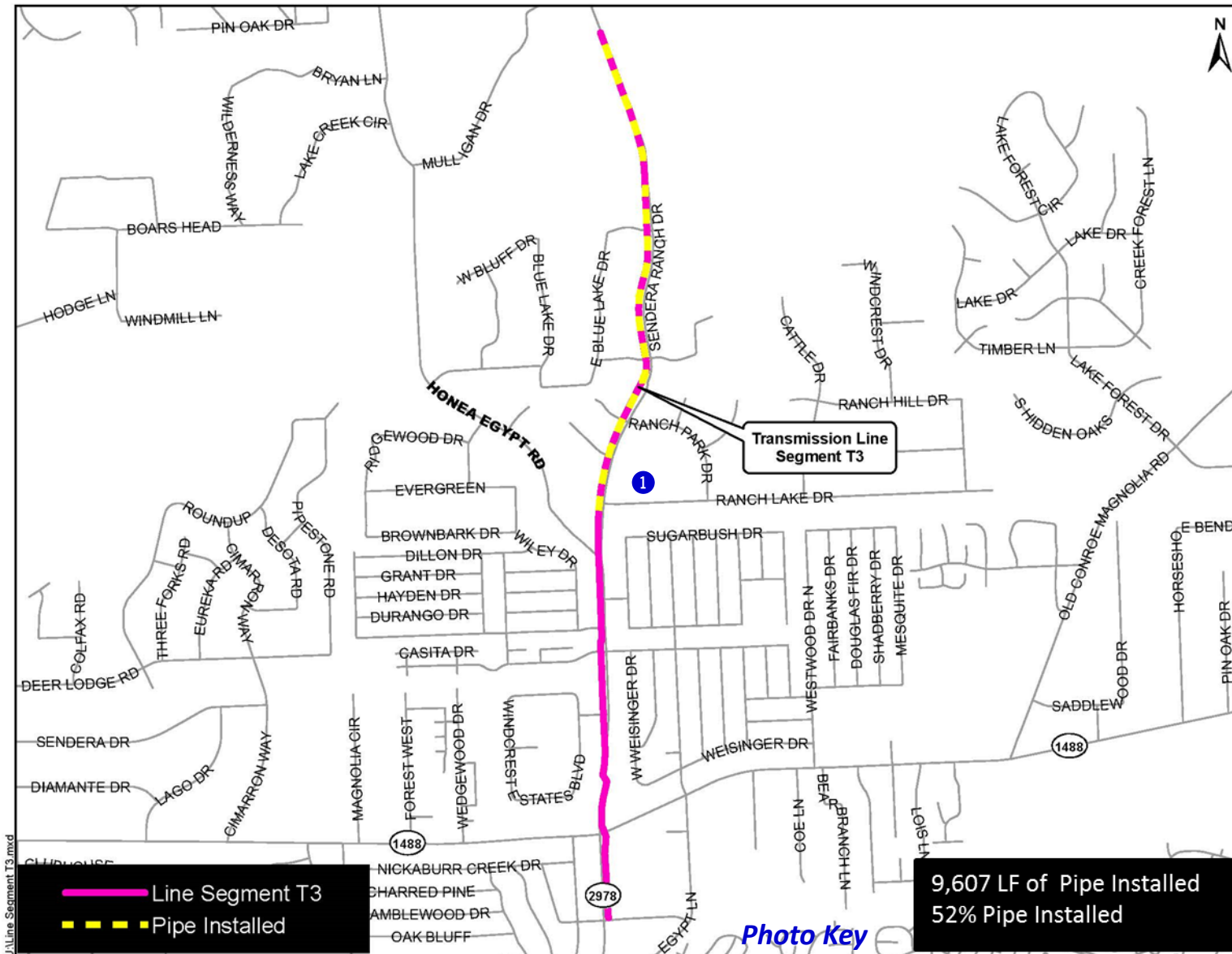


EXHIBIT 11 (con't) Transmission Line System Construction Photos



① *Segment T3—54-inch pipe installation along Sendera Ranch Road*

EXHIBIT 11 (con't) Transmission Line System Construction Photos

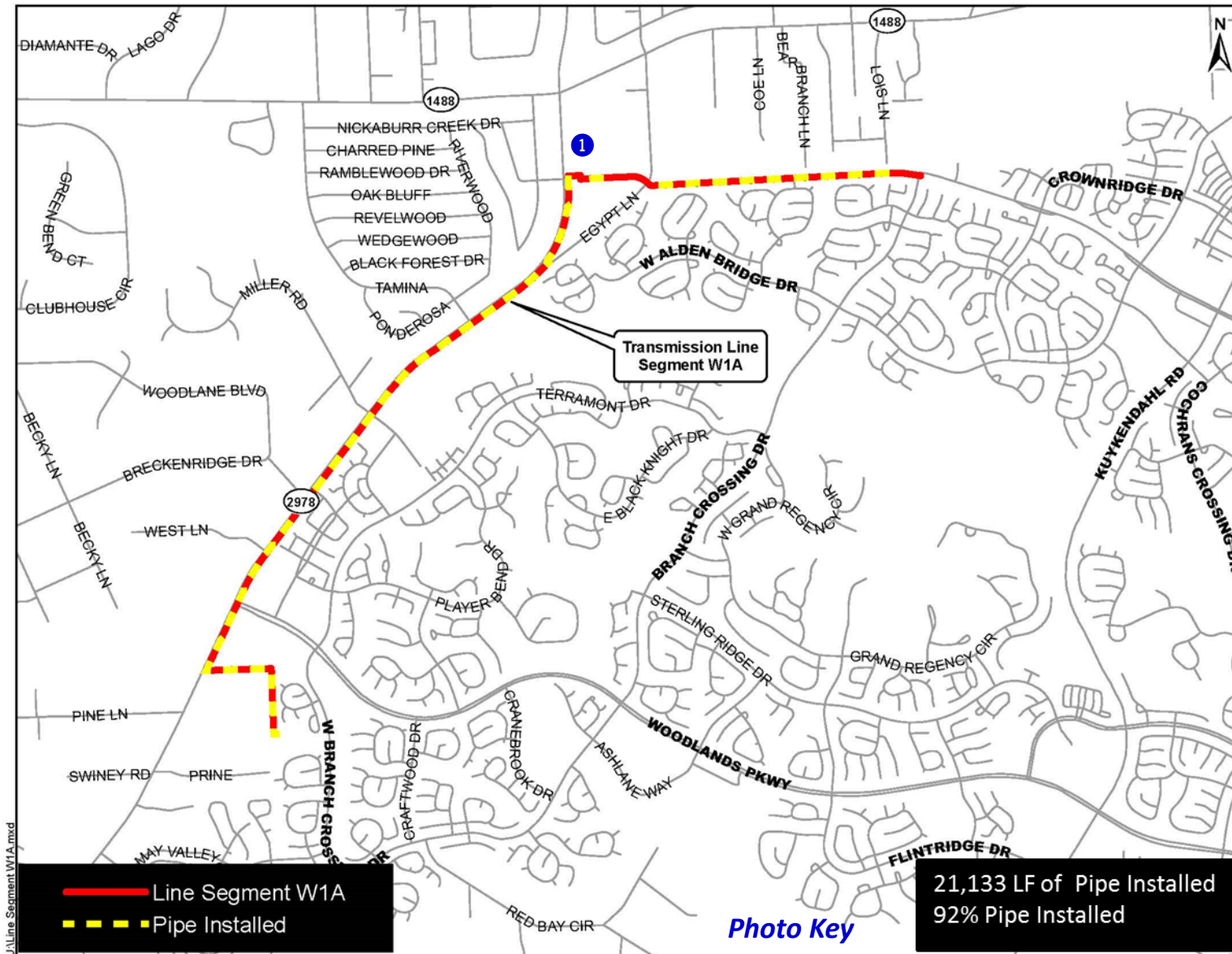


EXHIBIT 11 (con't) Transmission Line System Construction Photos



① *Segment W1A—Concrete repairs along Research Forest Drive*

EXHIBIT 11 (con't) Transmission Line System Construction Photos

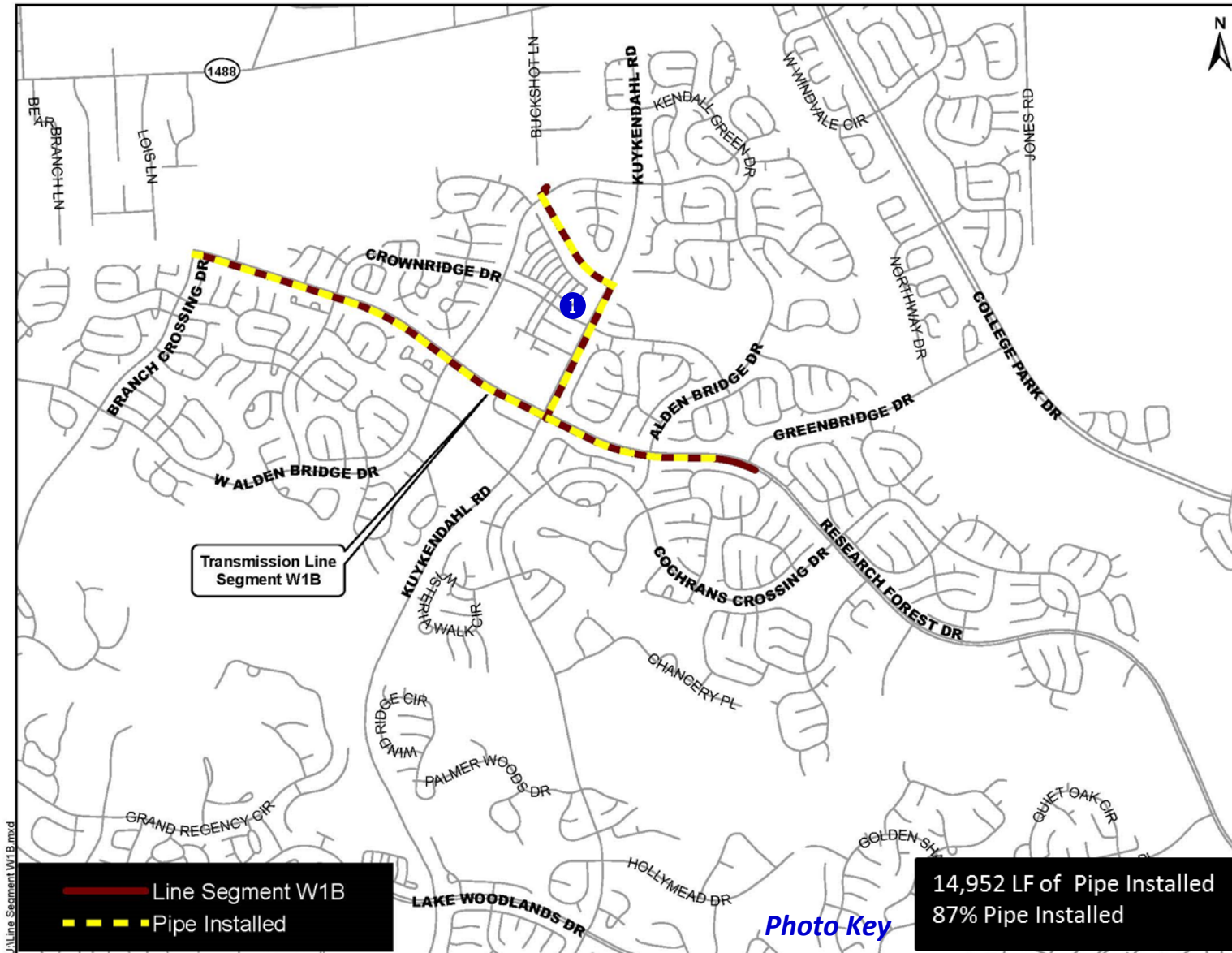


EXHIBIT 11 (con't) Transmission Line System Construction Photos



① *Segment W1B - Asphalt shoulder repair along Research Forest Drive*

EXHIBIT 11 (con't) Transmission Line System Construction Photos

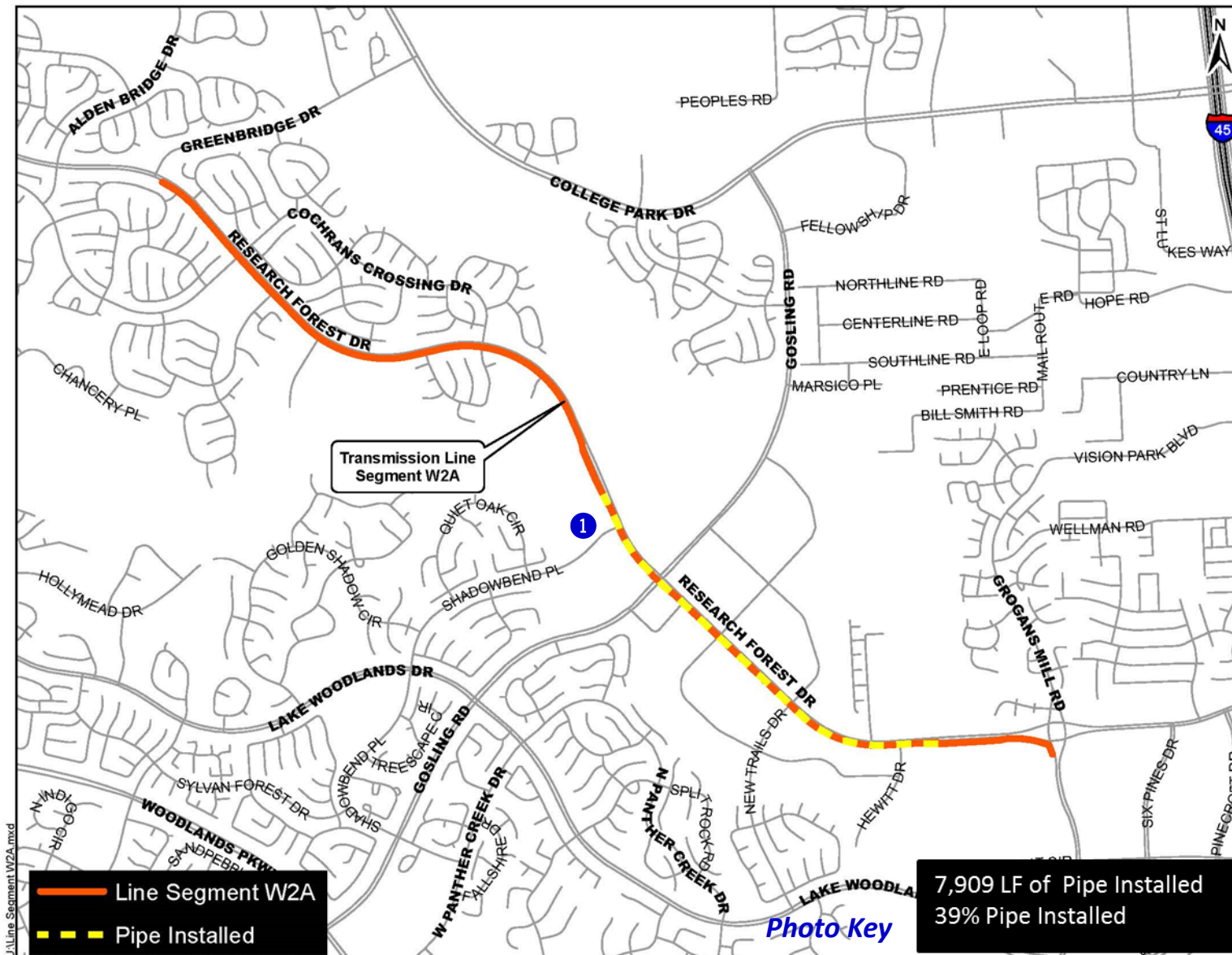


EXHIBIT 11 (con't) Transmission Line System Construction Photos



❶ Segment W2A - 42-inch pipe installation along Research Forest Drive



EXHIBIT 11 (con't) Transmission Line System Construction Photos

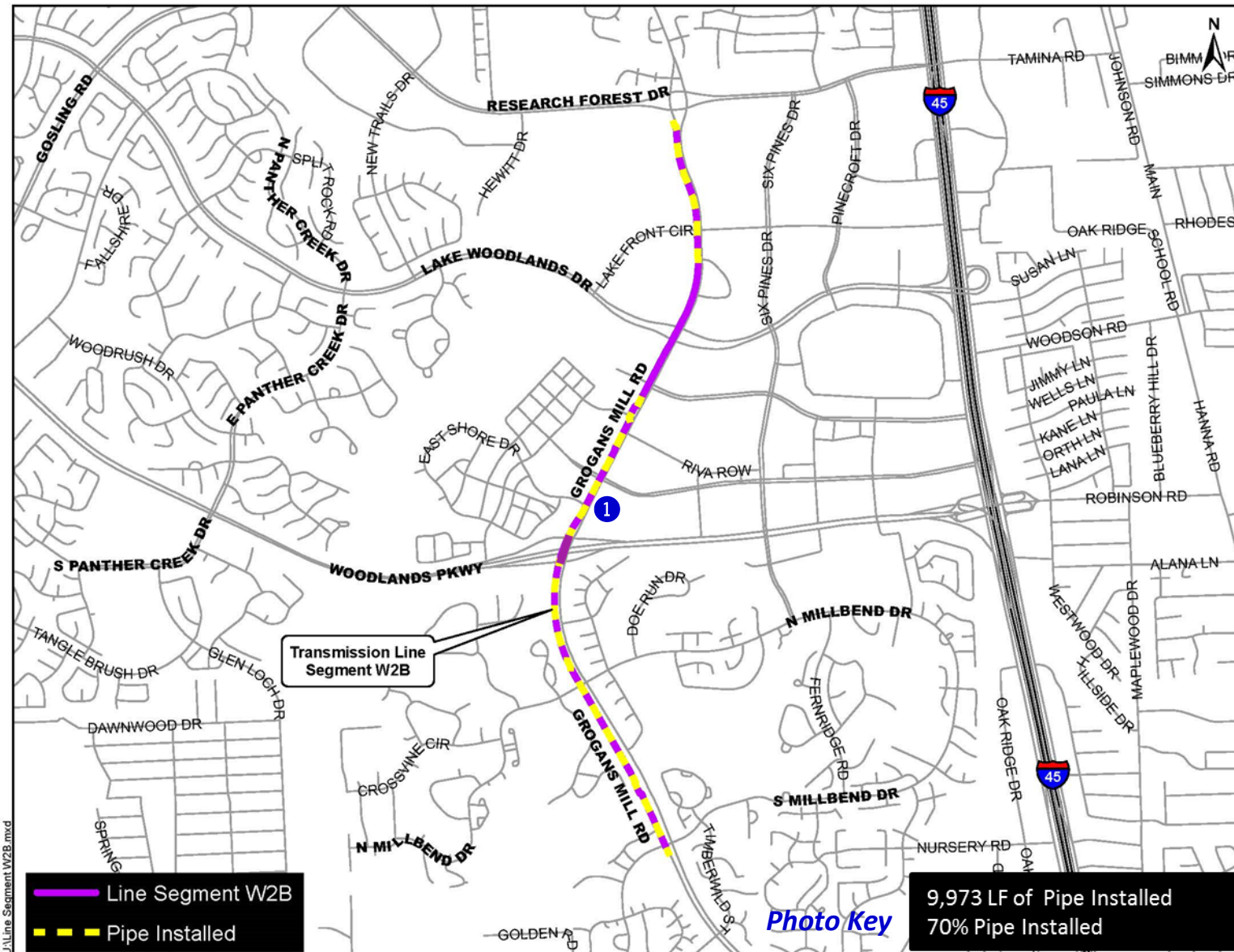


EXHIBIT 11 (con't) Transmission Line System Construction Photos



① *Segment W2B - Concrete pavement installation at Grogans Mill Road and East Shore Drive*

EXHIBIT 11 (con't) Transmission Line System Construction Photos

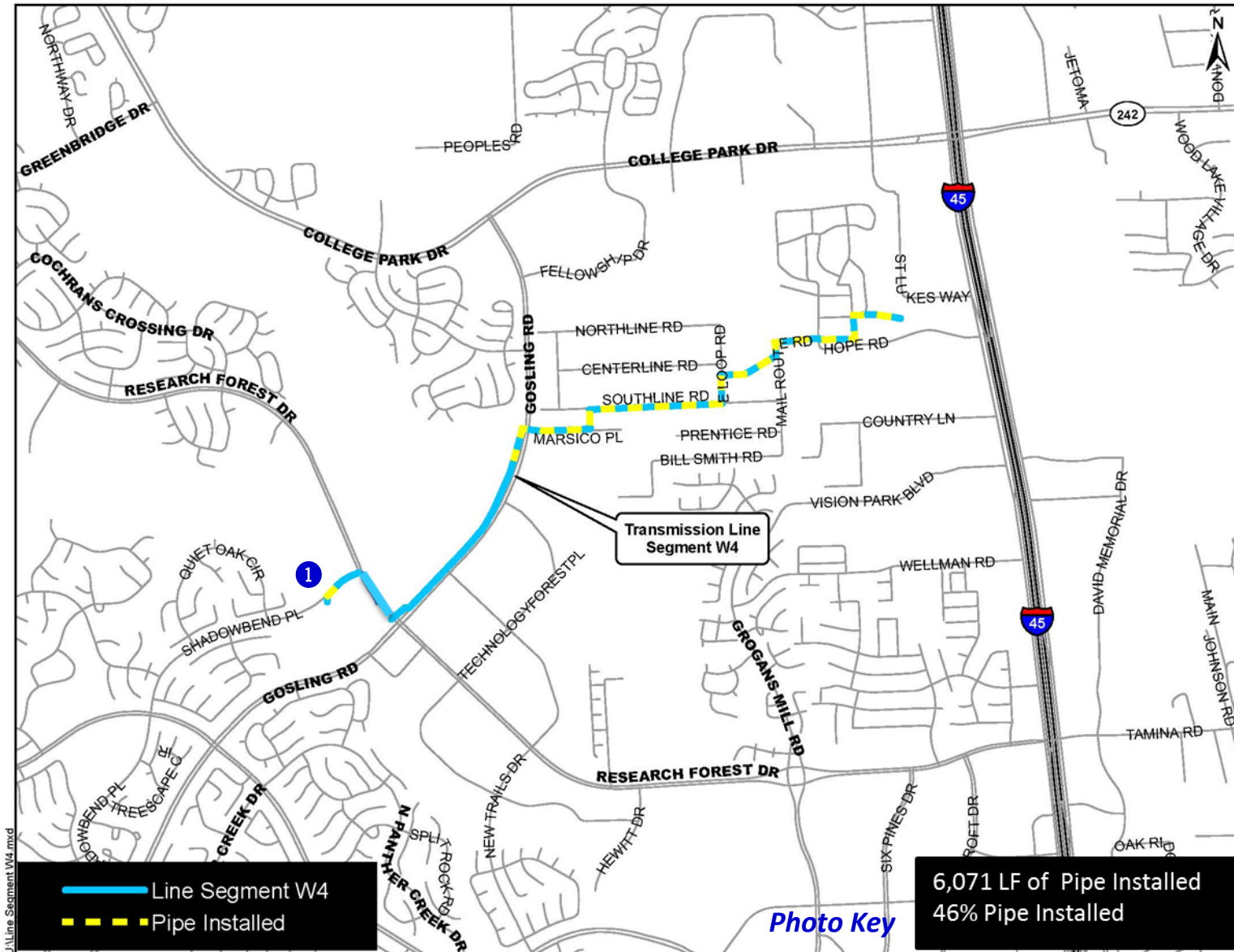


EXHIBIT 11 (con't) Transmission Line System Construction Photos



① *Segment W4 - 24-inch pipe and fiber optic conduit installation at Shadowbend Place*

EXHIBIT 11 (con't) Transmission Line System Construction Photos

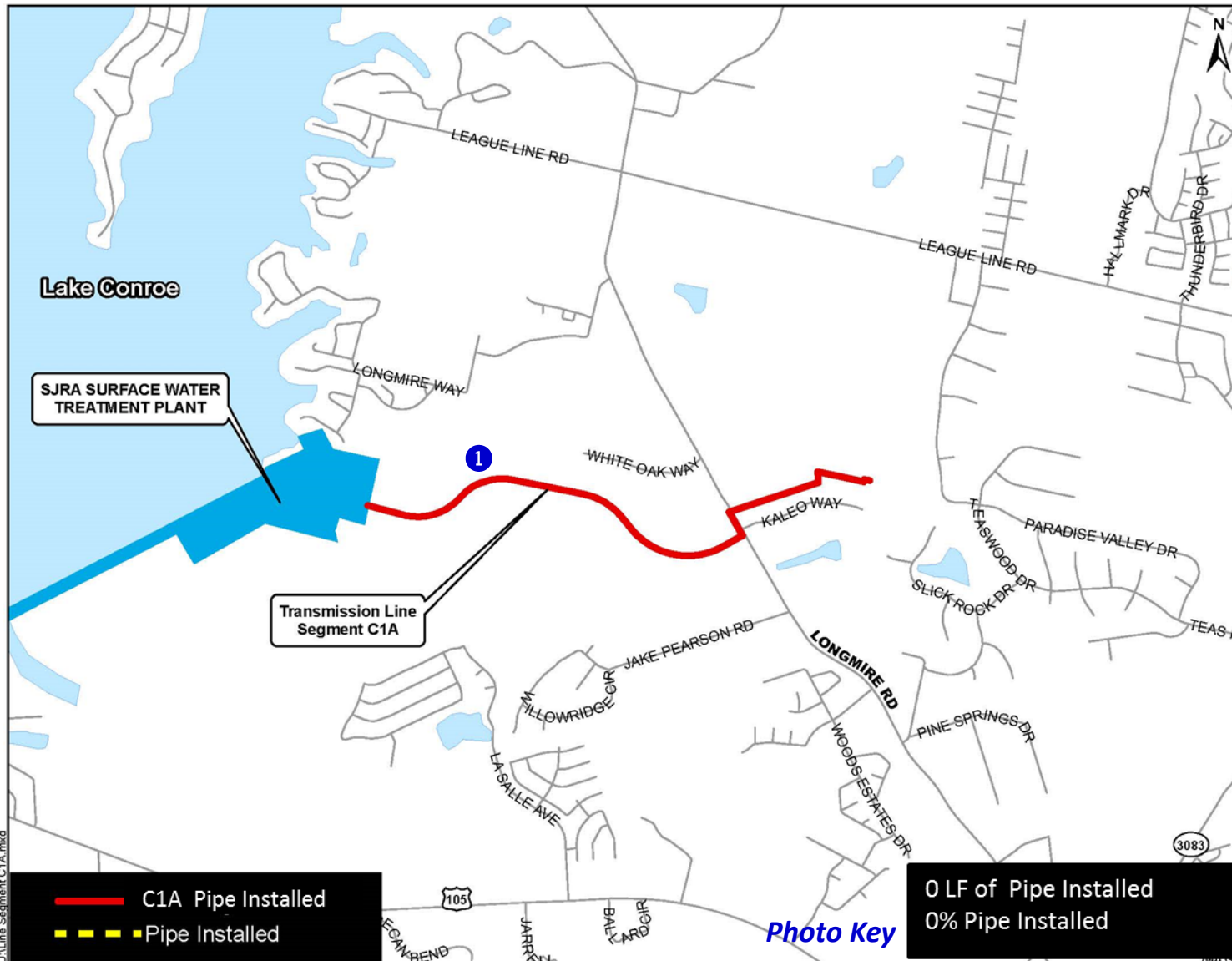


EXHIBIT 11 (con't) Transmission Line System Construction Photos



① Segment C1A - Tunnel installation at creek along GRP Access Road

EXHIBIT 11 (con't) Transmission Line System Construction Photos

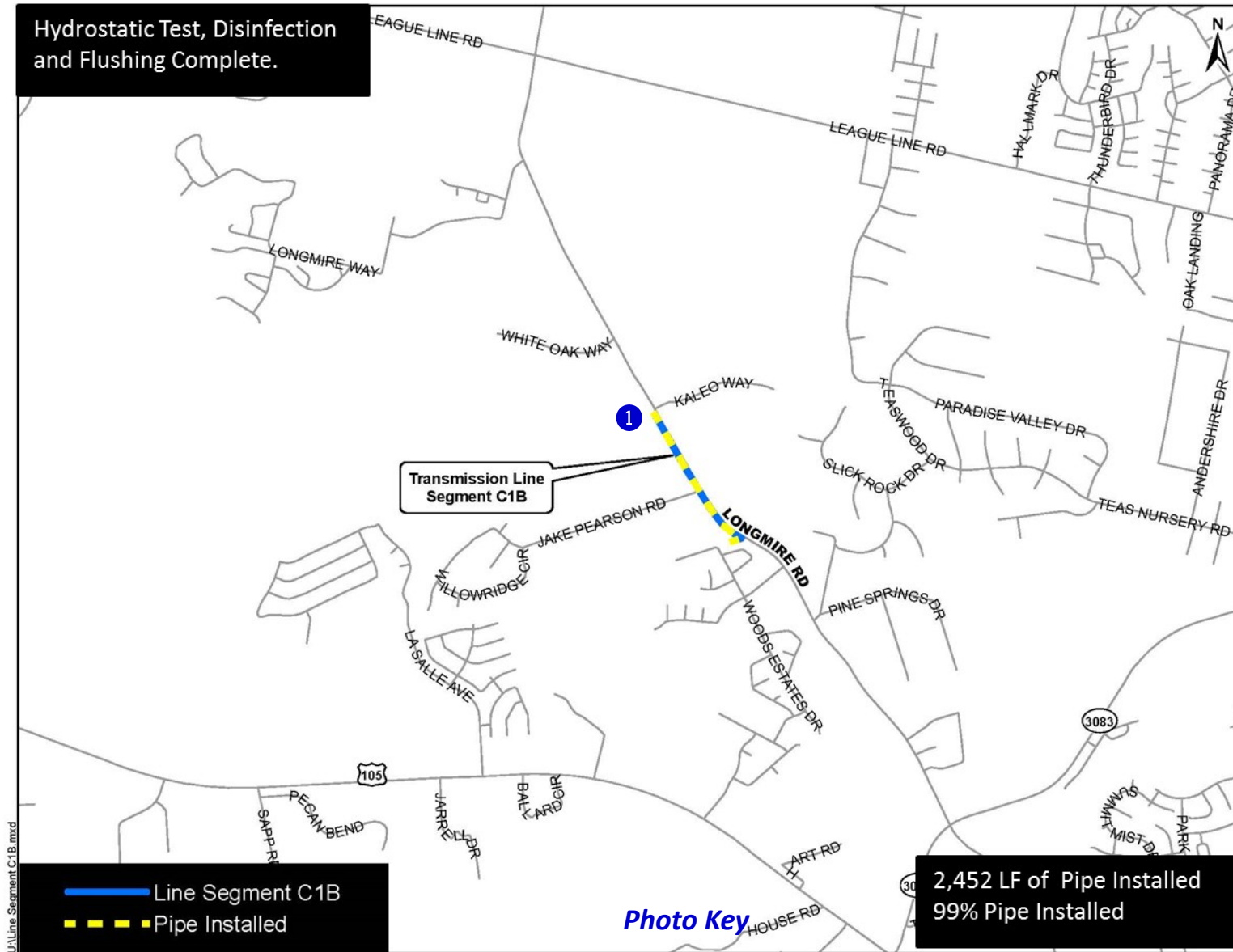


EXHIBIT 11 (con't) Transmission Line System Construction Photos



① *Segment C1B - Horizontal directional drilling fiber optic conduit along Longmire Road*

EXHIBIT 11 (con't) Transmission Line System Construction Photos

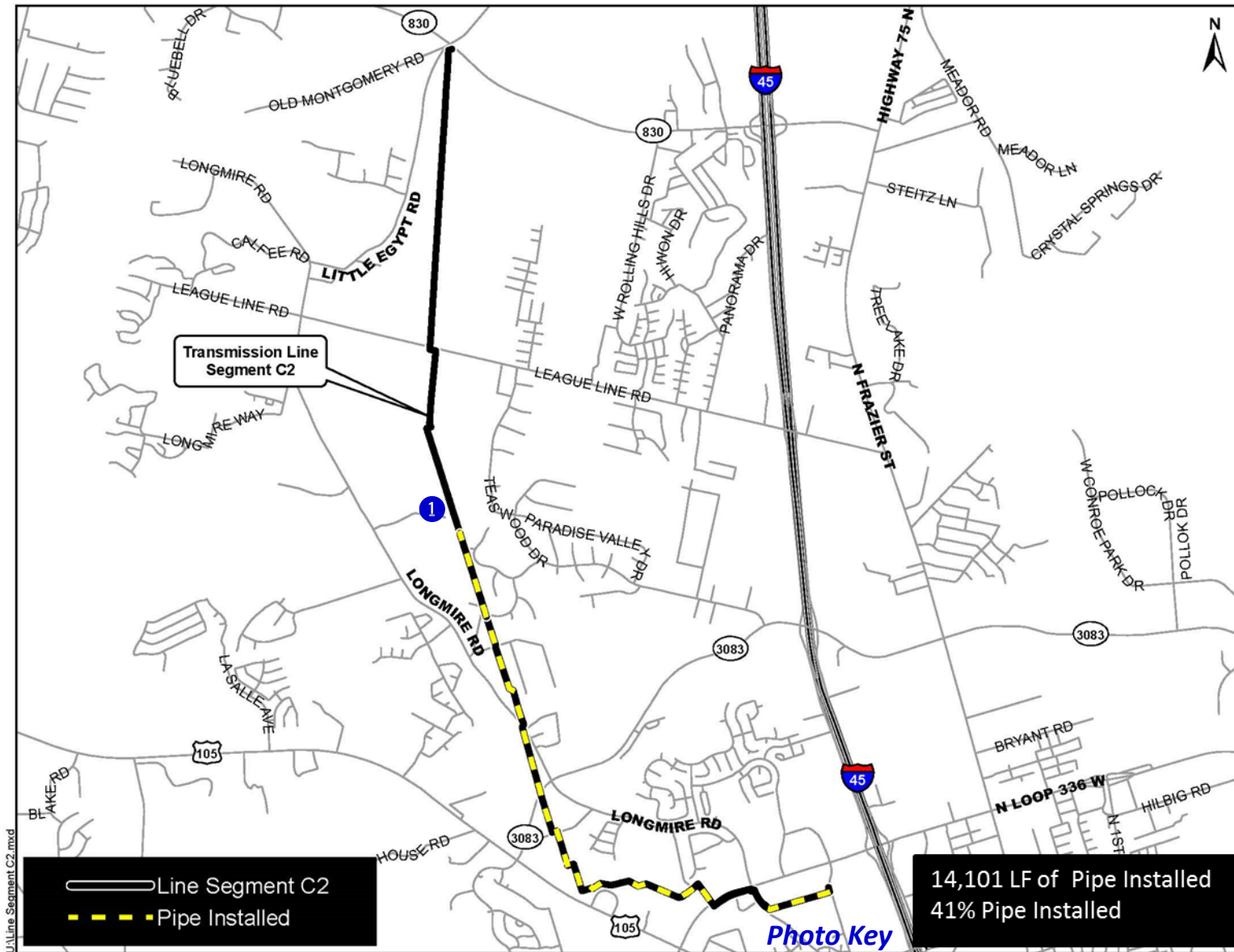


EXHIBIT 11 (con't) Transmission Line System Construction Photos



❶ *Segment C2—Pipe installation along Entergy easement and Wayne Bennett Court*

EXHIBIT 11 (con't) Transmission Line System Construction Photos

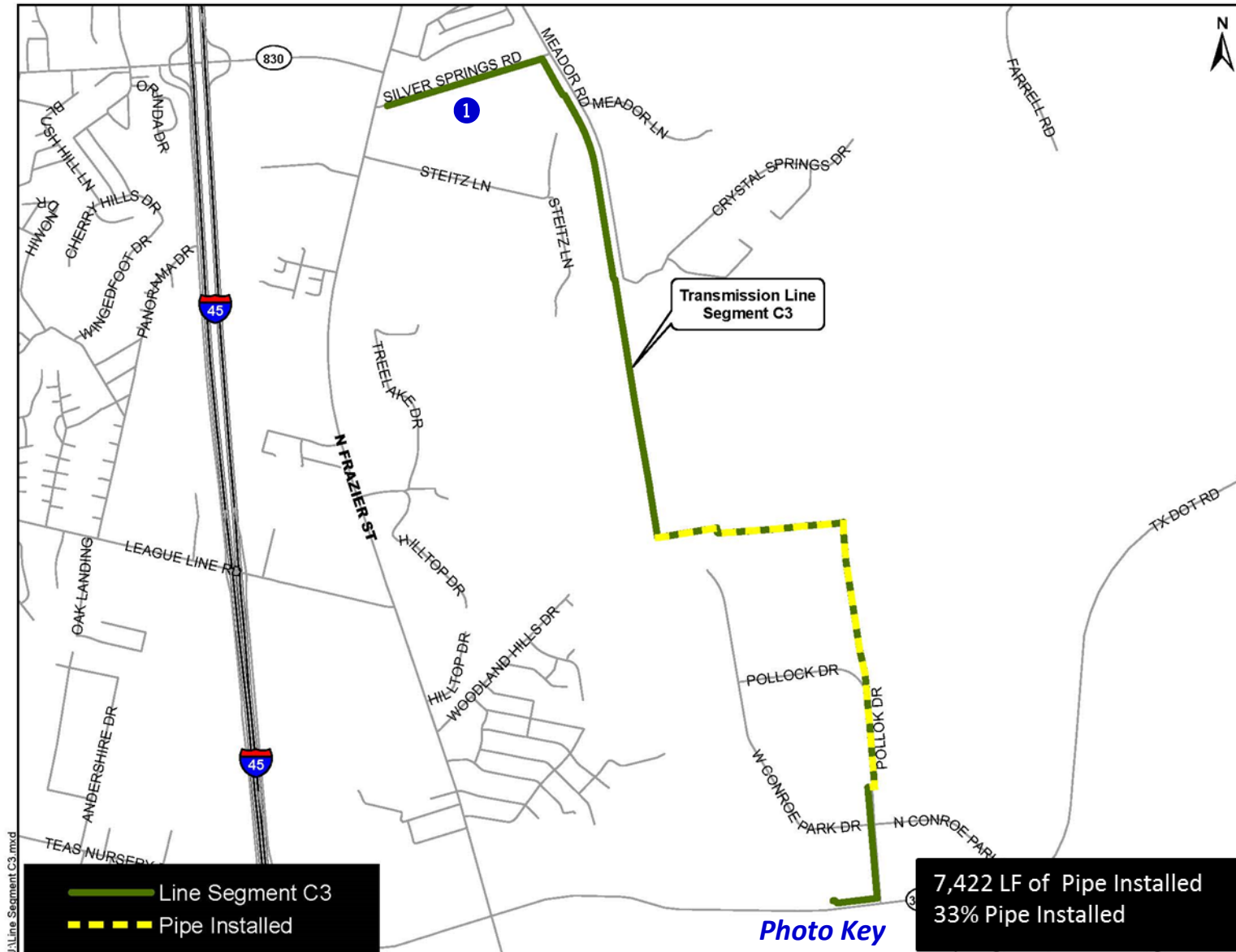


EXHIBIT 11 (con't) Transmission Line System Construction Photos



① *Segment C3—Security fence installation along Silver Springs Road at Girl Scout property*

EXHIBIT 11 (con't) Transmission Line System Construction Photos

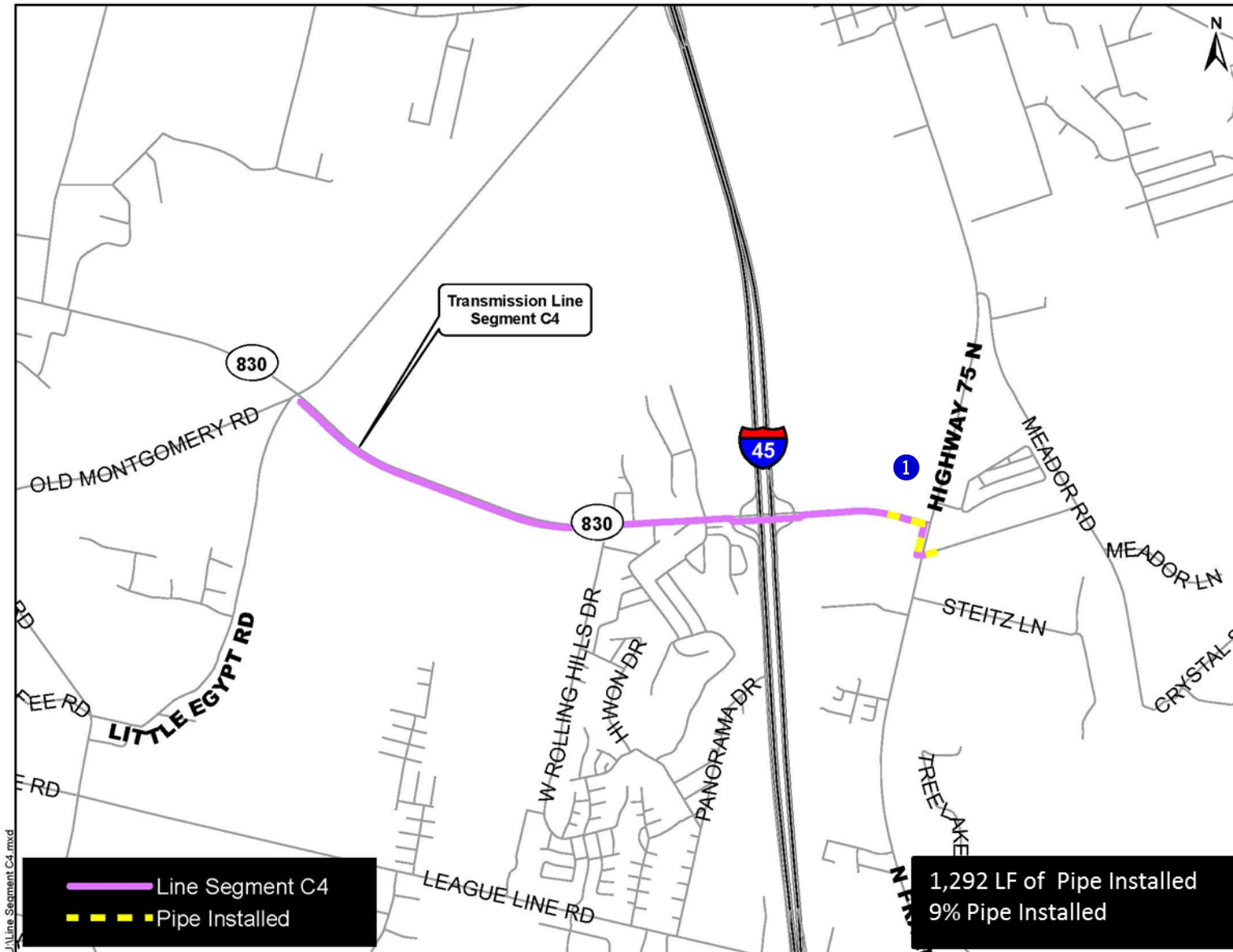


EXHIBIT 11 (con't) Transmission Line System Construction Photos



① *Segment C4—24-inch pipe and restrained joint installation along FM 830*

EXHIBIT 11 (con't) Transmission Line System Construction Photos

WATER RECEIVING FACILITIES—NORTH

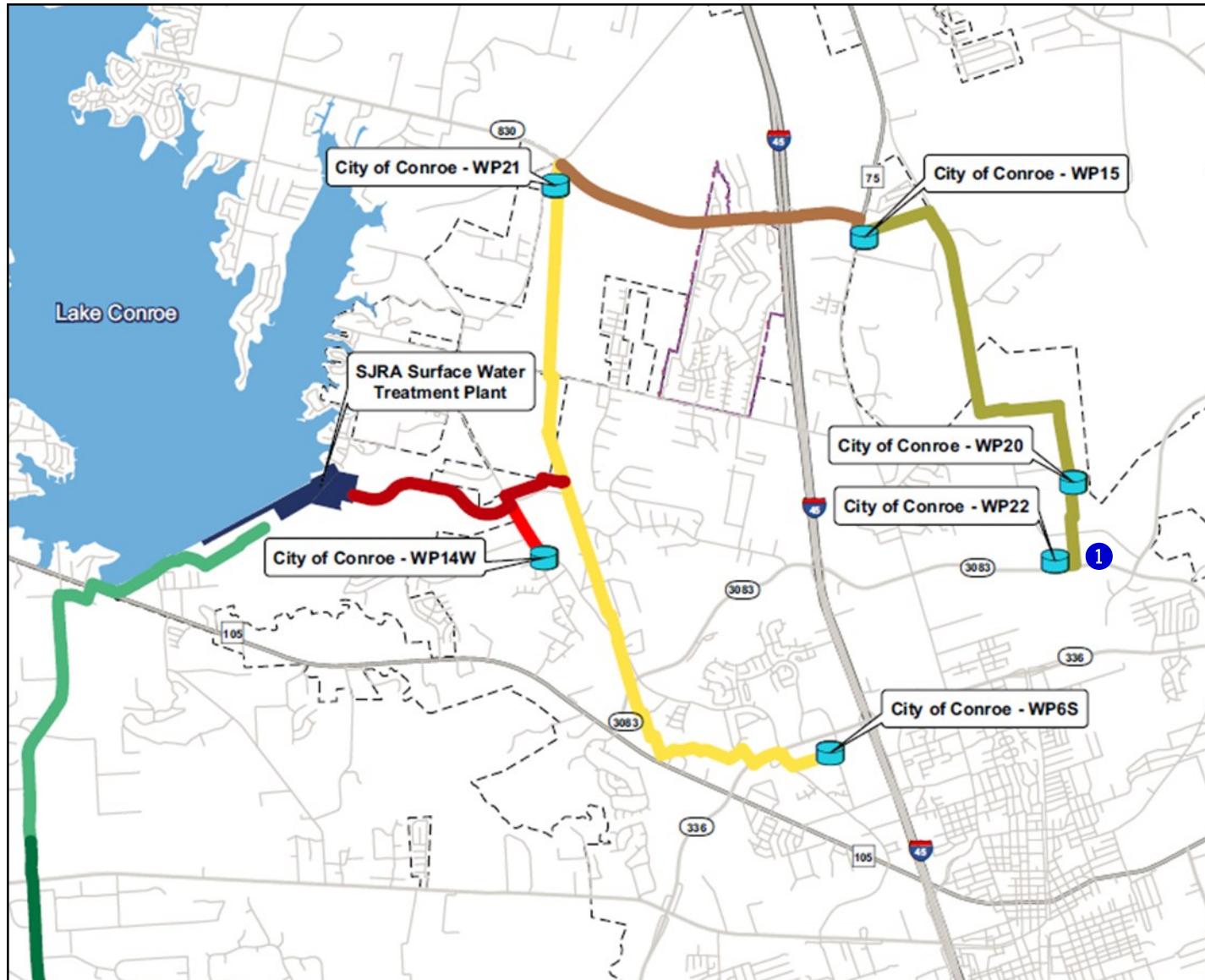


EXHIBIT 11 (con't) Transmission Line System Construction Photos



① *Water Receiving Facilities—North— Flow and pressure control station slab installation at City of Conroe Water Plant No. 22*

EXHIBIT 11 (con't) Transmission Line System Construction Photos

WATER RECEIVING FACILITIES—SOUTH

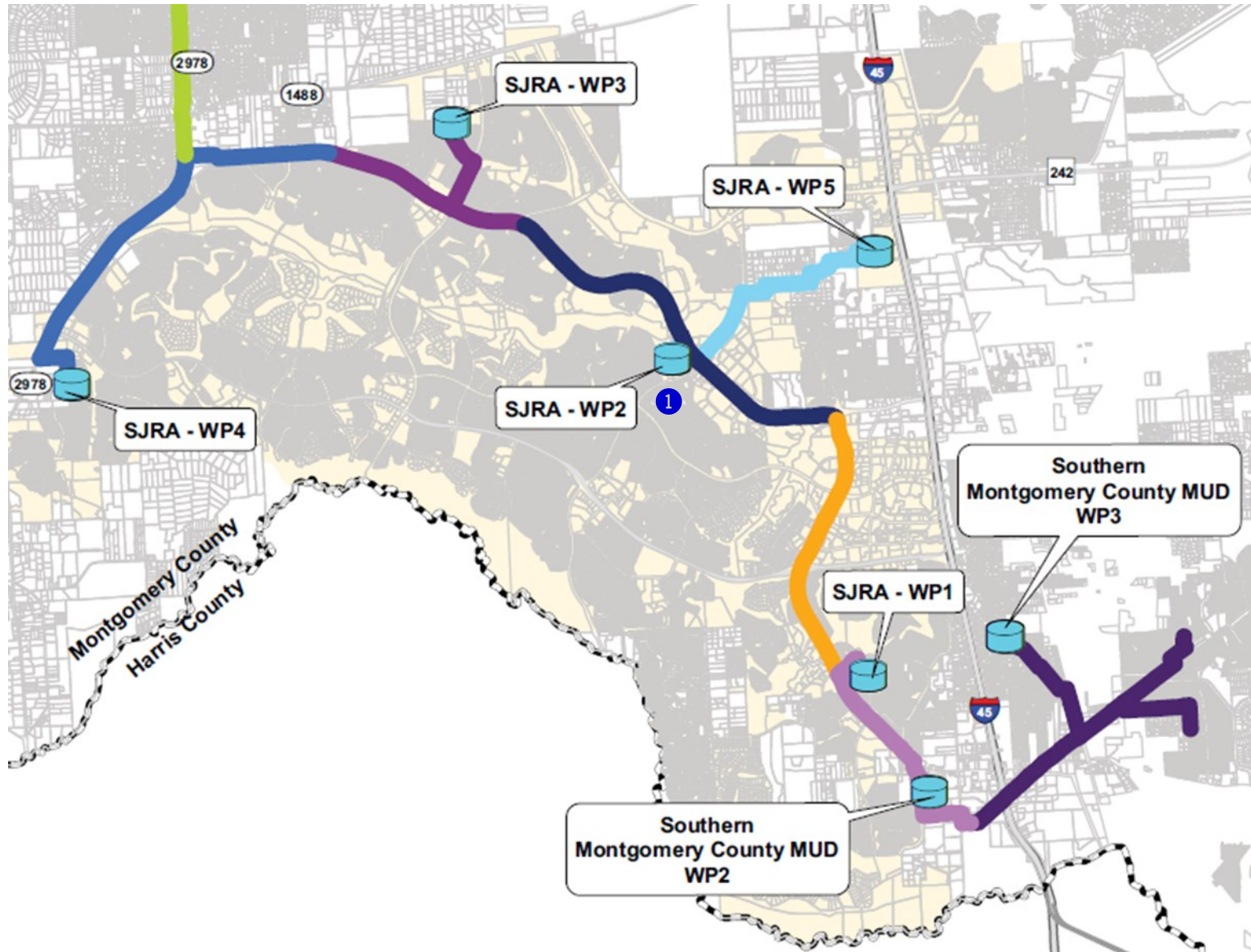


EXHIBIT 11 (con't) Transmission Line System Construction Photos



① *Water Receiving Facilities—South—20-inch ground storage tank connection at SJRA Water Plant No. 2*

EXHIBIT 12 Surface Water Standpipe Construction Photos

Surface Water Standpipe

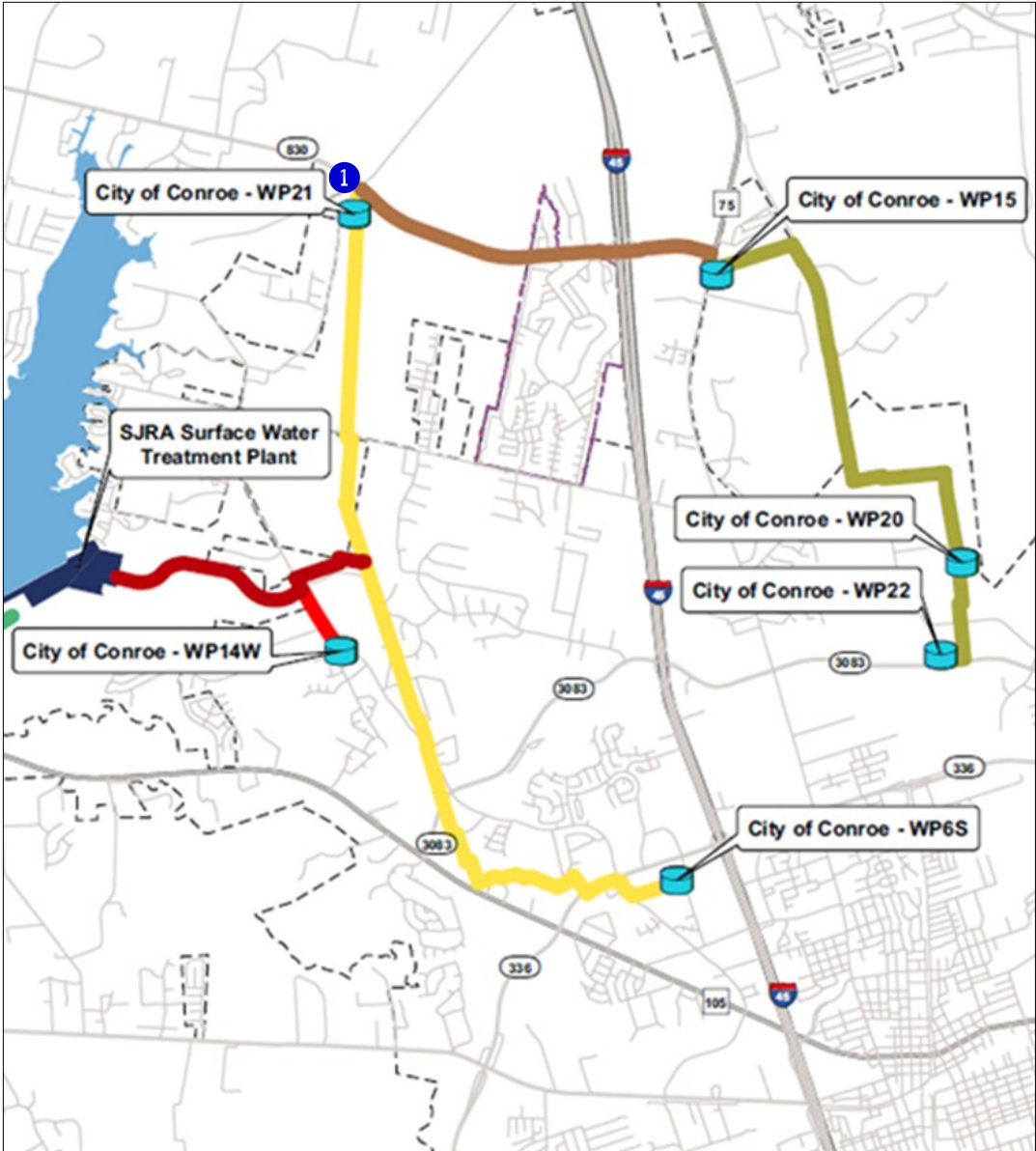


EXHIBIT 12 (con't) Surface Water Standpipe Construction Photos



① *Example Standpipe—SJRA Standpipe currently under fabrication*