



# GROUNDWATER REDUCTION PLAN PROGRAM

MONTHLY PROGRESS REPORT - FEBRUARY 2013



## TABLE OF CONTENTS

<b>Table of Contents</b>	<b>i</b>	4.3 Invoices/Applications for Payment	4-1
<b>Acronyms and Definitions</b>	<b>ii</b>	4.4 Contract Amendments and Change Orders	4-1
<b>1.0 Planning</b>	<b>1-1</b>	4.5 Claims	4-2
1.1 Strategic	1-1	4.6 CIP Cash Flow	4-2
1.2 Engineering and Construction	1-1	4.7 CIP Budget Estimates at Completion	4-2
1.3 Meetings	1-1	4.8 Land Acquisition	4-2
<b>2.0 Schedule</b>	<b>2-1</b>	<b>5.0 Quality Assurance</b>	<b>5-1</b>
2.1 Engineering	2-1	<b>6.0 Exhibits</b>	<b>6-1</b>
2.2 Construction	2-1		
<b>3.0 Procurement</b>	<b>3-1</b>		
3.1 Solicitations	3-1		
3.2 Contract Awards	3-1		
3.3 Process and Procedures	3-1		
3.4 Look Ahead	3-1		
<b>4.0 Cost Report and Financial Considerations</b>	<b>4-1</b>		
4.1 GRP Program and GRP Project CIP Budget(s)	4-1		
4.2 Financial Report	4-1		



# ACRONYMS AND DEFINITIONS

## Acronyms

<b>CA&amp;I</b>	Construction Administration and Inspection
<b>CCT</b>	Construction Communication Team
<b>CIP</b>	Capital Improvement Project
<b>CM&amp;I</b>	Construction Management and Inspection
<b>CMAR</b>	Construction Manager at Risk
<b>CMT</b>	Construction Material Testing
<b>CSB / P</b>	Competitive Sealed Bid / Proposal
<b>EA</b>	Environmental Assessment
<b>EAC</b>	Estimate At Completion
<b>GIS</b>	Geographic Information System
<b>GRP</b>	Groundwater Reduction Plan
<b>GST</b>	Ground Storage Tank
<b>HSPS</b>	High Service Pump Station
<b>LSGCD</b>	Lone Star Groundwater Conservation District
<b>LVGU</b>	Large Volume Groundwater User
<b>PER</b>	Preliminary Engineering Report
<b>PMP</b>	Program Management Plan
<b>PSA</b>	Professional Services Agreement
<b>QA</b>	Quality Assurance
<b>RFB / Q / P</b>	Request For Bids / Qualifications / Proposals
<b>RWI / RWPS</b>	Raw Water Intake / Raw Water Pump Station
<b>SJRA</b>	San Jacinto River Authority
<b>SOQ</b>	Statement Of Qualifications
<b>SWF</b>	Surface Water Facilities (SWTP, HSPS and RWI)
<b>SWRF</b>	Surface Water Receiving Facilities
<b>SWTP</b>	Surface Water Treatment Plant
<b>TBD</b>	To Be Determined
<b>TCEQ</b>	Texas Commission on Environmental Quality
<b>TWDB</b>	Texas Water Development Board
<b>TxDOT</b>	Texas Department Of Transportation
<b>WIF</b>	Water Infrastructure Fund

## Definitions

<b>GROUNDWATER REDUCTION PLAN (GRP)</b>	The document developed and filed with the LSGCD indicating SJRA's plan to reduce the permitted 2009 groundwater pumpage of its GRP Participants by 30%. The GRP is administered by the SJRA, including any supplements, revisions, or amendments.
<b>GRP PROGRAM TEAM</b>	SJRA staff, Program Management Consultant (Brown & Gay Engineers, Inc.) staff, and technical consultants working interdependently toward meeting the goals of the Groundwater Reduction Plan.
<b>GRP ADMINISTRATOR</b>	The SJRA General Manager's designee who administers the SJRA Groundwater Reduction Plan and GRP Contract with GRP Participants.
<b>GRP CONTRACT</b>	Contract between the SJRA and a Participant to be included in the SJRA's efforts to meet the surface water conversion requirements mandated by the LSGCD.
<b>JOINT GRP</b>	GRP which is prepared to include (takes into account) LVGUs who have executed a GRP Contract with the SJRA to join the SJRA's GRP. Contracted LVGUs obtain LSGCD groundwater reduction regulation compliance through the SJRA's Joint GRP without preparing and submitting a GRP.
<b>LARGE VOLUME GROUNDWATER USER(S) (LVGU)</b>	Any person or entity that, through a single well or a combination of wells, actually produces or is authorized by permit(s) issued by the LSGCD to produce 10 million gallons or more of groundwater annually on or after January 1, 2008.
<b>PARTICIPANT(S)</b>	Regulated User(s) that enters into and remains subject to a written agreement with the SJRA to be included in the SJRA's GRP and includes the legal successors or assigns of Participant(s).
<b>REGULATED USER(S)</b>	Any public or private entity or person that is or becomes subject to the District Regulatory Plan established by the LSGCD and includes any amendments, revisions or supplements thereto as may be adopted by the LSGCD.
<b>SJRA GRP DIVISION</b>	Division of the SJRA responsible for GRP compliance, and the management, administration, operation and maintenance of the surface water facilities and surface water transmission system.



## 1.0 PLANNING

The GRP Program Team meets regularly for the purposes of setting performance expectations and goals of the GRP Program, identifying the efforts required to achieve these objectives, evaluating the effectiveness of such efforts, and modifying those efforts based upon both internal and external performance evaluations.

### 1.1 Strategic

Key efforts during the month of February 2013 include evaluation of proposals and development of recommendations for SWF Work Package No. 4. This final work package to be awarded in March 2013 will carry the SWF construction to completion and will determine the Guaranteed Maximum Price (GMP) for the SWF.

On the surface water transmission side of the program, the focus was on identifying potential utility conflicts as well as other complications that need to be resolved before construction can start. Solutions to these conflicts take the form of utility relocation agreements and/or water transmission line realignments.

### 1.2 Engineering and Construction

All of the Transmission Line Segments are at or nearing the final design stage. During

final design, the designers and project managers are reviewing transmission routes for any conflicts and opportunities to resolve them. This effort identifies the need to relocate conflicting utilities and also to make alignment adjustments. During this period, project managers

and design consultants worked to finalize agreements for utility relocation with Texas Gas Utility Services and Consolidated Communications. Alignment adjust-

ments are proposed on Transmission Line Segments C1 and C2 that help to resolve conflicts experienced by property owners. This benefits the GRP Program by facilitating easement acquisition and building local support.

Proposals for Work Package No. 4—GMP were received on January 24, 2013. Proposal evaluations were completed during the month of February, and the recommended Guaranteed Maximum Price (GMP) was submitted by McCarthy to the SJRA Staff on February 28th.

### 1.3 Meetings

The GRP Program Team continued meeting with GRP Program stakeholders this month, in addition to its weekly GRP Program and GRP Project status meetings and monthly progress meetings with surface water transmission system and SWF design consultants. A listing of these meetings may be seen in attached Exhibit 10.



*Transmission Segment T3 Pre-Proposal Meeting*

## 2.0 SCHEDULE

Currently, the GRP Program remains on schedule for the delivery of treated surface water to select Joint GRP Participants on or before January 1, 2016. A simplified GRP Program schedule may be found in attached Exhibit 1.

### 2.1 Engineering

#### **Surface Water Transmission System**

**Segment T1** – Construction proposals submitted on 2/12/13.

**Segment T2** – Construction proposals submitted on 2/19/13.

**Segment T3** – Advertised for proposals on 2/19/13 and 2/26/13.

**Segment W1** – Construction proposals submitted on Segment W1B on 2/26/13. Advertised for proposals on Segment W1A on 2/5/13.

**Segment W2** – Advertised for proposals on Segment W2A on 2/12/13. Submitted final design for Segment W2B.

**Segment W3** – Segment W3A 90% Design submittal under review. Segment W3B 100% design submittal under review.

**Segment W4** – The SJRA GRP Program Team is completing the design review of LJA's 90% submission.

**Segment C1** – Segment C1B 90% review was completed and comments were provided to the consultant on 2/14/13. Segment C1A 90% review was completed and comments were provided to the consultant on 2/28/13.

**Segment C2** – 100% submittal was received by the GRP Program Team on 2/15/13 and review is underway.

**Segment C3** – 100% review completed and comments provided to consultant on 2/15/13.

**Segment C4** – Work continued on final design. 90% review comments are being addressed.

**Surface Water Receiving Facilities** – A final submittal of the plans and specifications was made to TCEQ on 2/15/13. Coordination efforts continue between the Water Receiving Facility consultant and transmission line designers as well as Participants who plan to use their own consultant to design their receiving facilities.

#### **Surface Water Facilities**

**Raw Water Intake** – Design is complete and construction is underway.

**Surface Water Treatment Plant** – Design is complete and construction is underway.

**High Service Pump Station and Ground Storage Tanks** – Design is complete and construction is underway.

**Fiber Optic Communications System** – Continued review of surface water line segments and receiving facilities design milestone submittals. All 60% reviews completed.

**Construction Management and Inspection (CM&I)** – The CM&I team is engaged in reviewing plans and participates in pre-proposal meetings. Preparations are being made for the construction phase.

**Construction Administration and Inspection (CA&I)** – The CA&I staff is currently working with the CMAR and SJRA staff to review the Work Package No. 4 proposals.

**Cathodic Protection** – The consultant has completed updates for Work Package No. 4 and their review of 90%-complete transmission drawings. They are also finalizing their reviews of 100%-completed projects and their designs for those transmission line segments. They are continuing their efforts for the construction phase of cathodic protection for the Surface Water Facilities.

### 2.2 Construction

**Surface Water Transmission System** – A Notice to Proceed (NTP) is scheduled to be issued for Transmission Line Segment T1 in April with other segments to follow.

**Surface Water Receiving Facilities** – The City of Oak Ridge North will begin construction of its water plant renovation in March. This project includes surface water receiving facilities for the City of Oak Ridge North.

#### **Surface Water Facilities**

**Raw Water Intake** - The precast concrete bridge girders are onsite and being installed. Initial preparations have begun on the concrete forming system for the Raw Water Intake building foundation. Construction of

## 2.0 SCHEDULE (CONTINUED)

**Surface Water Treatment Plant** - Water Treatment Plant work was released in Early Work Package No. 3 and the earthwork is complete at the Membrane, Pre-Treatment, and GAC facilities. The excavations for all three amenities are complete, while the foundation at the Membrane building is being rapidly constructed. Below grade process piping at the GAC building is being installed along with several seal slabs to keep the excavation from eroding. Seal slabs at the Pre-Treatment structure will begin in early March, followed by below grade plumbing and process piping.



*Ground Storage Tank Nos. 1 and 2*

**High Service Pump Station and Ground Storage Tanks** - The concrete foundation at the High Service Pump Station is an ongoing process. The main pump-room and electrical/control area foundations are being installed ahead of schedule. Underground electrical and plumbing rough-ins are on-going.

**Fiber Optic Communications System** – Installation of conduit for the fiber will be done along with the transmission line.

*Reinforcement steel installation at Ground Storage Tank No. 2*



## 3.0 PROCUREMENT

### 3.1 Solicitations

Solicitations for proposals for construction for February were made for the following:

- San Jacinto River Authority RFP 13-027 Segment T1 Proposed 60" Water Transmission Line proposals received and evaluated;
- San Jacinto River Authority RFP 13-028 Segment T2 Proposed 60", 54" and 12" Water Transmission Line proposals received and evaluated;
- San Jacinto River Authority RFP 13-029 Segment T3 Proposed 54" Water Transmission Line advertised;
- San Jacinto River Authority RFP 13-030 Segment W1A Proposed 54", 48", and 16" Water Transmission Line advertisement and pre-proposal meeting;
- San Jacinto River Authority RFP 13-031 Segment W1B Proposed 48" Water Transmission Line received and evaluated;
- San Jacinto River Authority RFP 13-032 Segment W2A Proposed 42" and 30" Water Transmission Line advertisement and pre-proposal meeting.

### 3.2 Contract Awards

No contracts were awarded for the GRP Program in February.

### 3.3 Process and Procedures

There were no significant changes to the procurement process or procedures this month. The GRP Program continues to utilize traditional and alternative project delivery methods in the procurement of consultant and contractor services.

### 3.4 Look Ahead

The following list provides a very general look ahead at known and anticipated GRP Program professional services and construction contractor solicitations, contract awards, contract/work order amendments, and assorted agreements such as utility relocations and easement encroachments. Solicitations may be combined, modified, or canceled or time frames may be modified as deemed necessary.

- Amendment No. 1 to Work Order No. 3 for Distribution Metering Design at mul-

iple Water Receiving Facilities;

- Utility Relocation Agreement with Verizon (Segment C4);
- Construction Contract for Surface Water Transmission Line Segment W1A for the GRP Program;
- Construction Contract for Surface Water Transmission Line Segment W1B for the GRP Program;
- Work Order No. 8 for Construction Phase Services by Design Consultant during construction of Surface Water Transmission Line Segment W1B for the GRP Program;
- Work Order No. 3 for Construction Materials Testing for the GRP Surface Water Facilities Work Package No. 4;
- Work Order No. 6 for alignment changes to Surface Water Transmission Line Segment C1 for the GRP Program.



## 4.0 COST REPORT AND FINANCIAL CONSIDERATIONS

### 4.1 GRP Program and GRP Project CIP Budget(s)

Through this month, the GRP Program remains under its \$500,000,000.00 Capital Improvement Project (CIP) Program planning budget and forecasts continue to indicate it will be completed under budget (see also subsection 4.6 and Exhibit 7). A summary of the GRP Program's CIP budget and cost considerations as reported to the GRP Review Committee and the SJRA Board of Directors is provided as attached Exhibit 3.

A summary of the SJRA GRP Division's Fiscal Year 2013 (FY13) operating budget (revenue and expenditures) is provided as Exhibit 4. The budget includes all normal and customary expenses for operating a utility based, non-profit business, including debt service, and is developed annually for approval by the SJRA Board of Directors.

The GRP Program is currently operating under the SJRA Board of Director's authorized CIP budget of \$512,400,358.49 (net - \$446,804,553.05). The funding available in the CIP budget allows the SJRA to secure all of the resources required to perform professional services, construction services, and procure long lead time equipment during the design phase of the GRP Program.

### 4.2 Financial Report

Funding sources presently applied towards the GRP Program CIP budget include the TWDB's Water Infrastructure Fund (WIF; \$21,500,000.00 [gross]; \$21,029,662.92 [net]), the sale of open market Special Project Revenue Bonds, Series 2011 (\$83,430,358.49 [gross]; \$73,522,352.58 [net]), TWDB "D" Funds, Series 2011A (\$67,470,000.00 [gross]; \$61,552,571.67 [net]), Series 2012 (\$175,000,000.00 [gross]; \$161,159,055.87 [net]), and 2012A (\$165,000,000 [gross]; \$133,408,061.01 [net]). Approved funding to-date represents approximately 89.4% of the planned \$500,000,000.00 Program budget. The GRP Program's funding, contracted commitments and forecasted expenditures are summarized in Table 4.1 and further detailed in attached Exhibits 5A, 5B and 6.

Please note that financial reports do not include investment income.

### 4.3 Invoices/Applications for Payment

GRP Program level and GRP Project level consultant Invoices and/or construction contractor Applications for Payment received through February 28, 2013 are represented in the Table 4.1 (Item F, February, 2013). A detailed breakdown of consultant invoices and/or construction contractor pay applications received for services performed this month appears in Table 4.2.

	PREVIOUS (THRU 1/31/13)	FEBRUARY 2013
<b>A. APPROVED FUNDING</b>	\$512,400,358.49	\$512,400,358.49
<b>B. AVAILABLE FUNDING AFTER COSTS</b>	\$450,671,704.05	\$450,671,704.05
<b>C. APPROVED CONTRACTS</b>	\$184,411,300.45	\$191,950.59
<b>D. PROJECT CLOSE OUT</b>	(\$551,272.27)	-0-
<b>E. UNCONTRACTED FUNDING (B - C + D; B JAN - C - C JAN + D + D JAN)</b>	\$266,811,675.87	\$266,619,725.28
<b>F. INVOICED</b>	\$71,442,630.59	\$4,592,003.71
<b>G. REMAINING FUNDS (B - F; B - F - F JAN)</b>	\$379,229,073.46	\$374,637,069.75

	PREVIOUS (THRU 1/31/13)	FEBRUARY 2013
<b>ENGINEERING &amp; SPECIALTY CONSULTANT (PROGRAM)</b>	\$16,979,508.09	\$771,434.11
<b>ENGINEERING &amp; SPECIALTY CONSULTANT (PROJECT)</b>	\$38,024,789.26	\$1,529,986.06
<b>CONSTRUCTION CONTRACTOR / CMAR</b>	\$16,438,333.24	\$2,290,583.54
<b>TOTALS:</b>	\$71,442,630.59	\$4,592,003.71

### 4.4 Contract Amendments and Change Orders

Each of the GRP Program agreements, work orders and amendments listed in section 3.2 were presented to the GRP Review Committee Meeting on February 25, 2013 and to the SJRA Board Meeting on February 28, 2013, and were authorized by the SJRA Board of Directors for execution by the SJRA General Manager.





## 4.0 COST REPORT AND FINANCIAL CONSIDERATIONS (CONTINUED)

### **4.5 Claims**

No claims were identified this month.

### **4.6 CIP Cash Flow**

The GRP Program CIP cash flow through SJRA FY2015 reflects known expenditures through February 2013 and estimates for future expenditures were updated this month. All active and currently identified future GRP Program Projects and initiatives are included in the cash flow. A graph of forecasted monthly expenditures from the referenced cash flow is attached as Exhibit 7.

### **4.7 CIP Budget Estimates at Completion**

#### **4.7.1 GRP Program**

The **total gross funds** (including capitalized interest) required to execute Phase I of the GRP Program are currently estimated at \$563,400,358.49.

#### **4.7.2 GRP Projects**

The GRP Program Projects remained within their approved contract budgets through this month. Exhibit 8 indicates each active GRP Program Project and GRP Program contract forecasted estimate at completion (EAC). Additionally, all current GRP Program contracts, including their respective SJRA Board of Director's approved budgeted amounts and percent complete, are listed in Exhibit 2.

### **4.8 Land Acquisition**

The GRP Program Team, with the support of its assorted land acquisition consultants, continued to make steady progress in acquiring the land and easements necessary for the surface water transmission system. The preparation of metes & bounds descriptions for easements along the transmission line routes continued and are nearing completion. Eighteen (18) easements were acquired in February 2013, primarily along Segment W3, bringing the total number of easements acquired to one hundred fifty one (151). Negotiations to acquire other easements throughout the system are at varying stages of completion. A cumulative summary of easement acquisition activity is provided in attached Exhibit 9.



## 5.0 QUALITY ASSURANCE

### 5.1 Final Design

This month's QA activity associated with final design deliverables produced by the engineering consultants is as follows:

- Dannenbaum (Segment C1) - 90% design review for project Segment C1A was completed.
- SPI (Segment C2) - 100% design plans were submitted 2/15/13 and are currently under review.
- Kimley Horn (Segment 3) -100% design review was completed and comments were provided to the consultant.
- Pirnie/ARCADIS (Water Receiving Facilities) - A final submittal of the plans and specifications was made to TCEQ on 2/15/13.
- Cobb Fendley (Segment W3) Segment W3A 90% design plans were submitted, Segment W3B 100% design plans were submitted

As final design continues and milestone submittals are received, the GRP Program Team will review and provide comments as applicable to each submittal. The review will be based on submittal compliance with the GRP Program's Design Standards and Criteria Manual, completeness per Program Management Plan (PMP) Section 14.0 – Quality Management and Section 21.0 – Design Management, and general project understanding.

### 5.2 Pre-Construction

Constructability reviews by the CM&I consultant and GRP Program Transmission System Construction Manager continued this month on milestone drawings submittals for the surface water transmission system. Review is underway on the 100% drawings for Segments T3 and W1A.

### 5.3 Construction

Quality assurance efforts by the SJRA Construction Inspectors as well as the SWF CA&I consultant continued this month with the continuation of SWF construction, primarily for the RWI, HSPS and GSTs. Efforts included regular visits to the project site to monitor and document observed progress and confirm compliance with the construction contract. Similar quality assurance efforts by the SJRA Construction Inspectors and CM&I consultant for the SWRF and surface water transmission sys-

tem will commence with the beginning of construction on those respective projects.



## 6.0 EXHIBITS

Exhibit 1 - GRP Program Schedule

Exhibit 2 - Selected GRP Program Contracts

Exhibit 3 - Monthly GRP Program Financing Report

Exhibit 4 - GRP Unaudited Schedule of Revenues & Expenses - Actual & Budget and Clarification of Actual & Budget Variances

Exhibit 5A - GRP Program Capital Improvements Program Estimate-to-Complete

Exhibit 5B - GRP Program Fund Data

Exhibit 6 - Funding Source Summary

Exhibit 7 - GRP Monthly Forecasted Expenditures for Contracted Services

Exhibit 8 - Estimate at Completion (EAC) for Current Authorizations

Exhibit 9 - Land Acquisition Summary

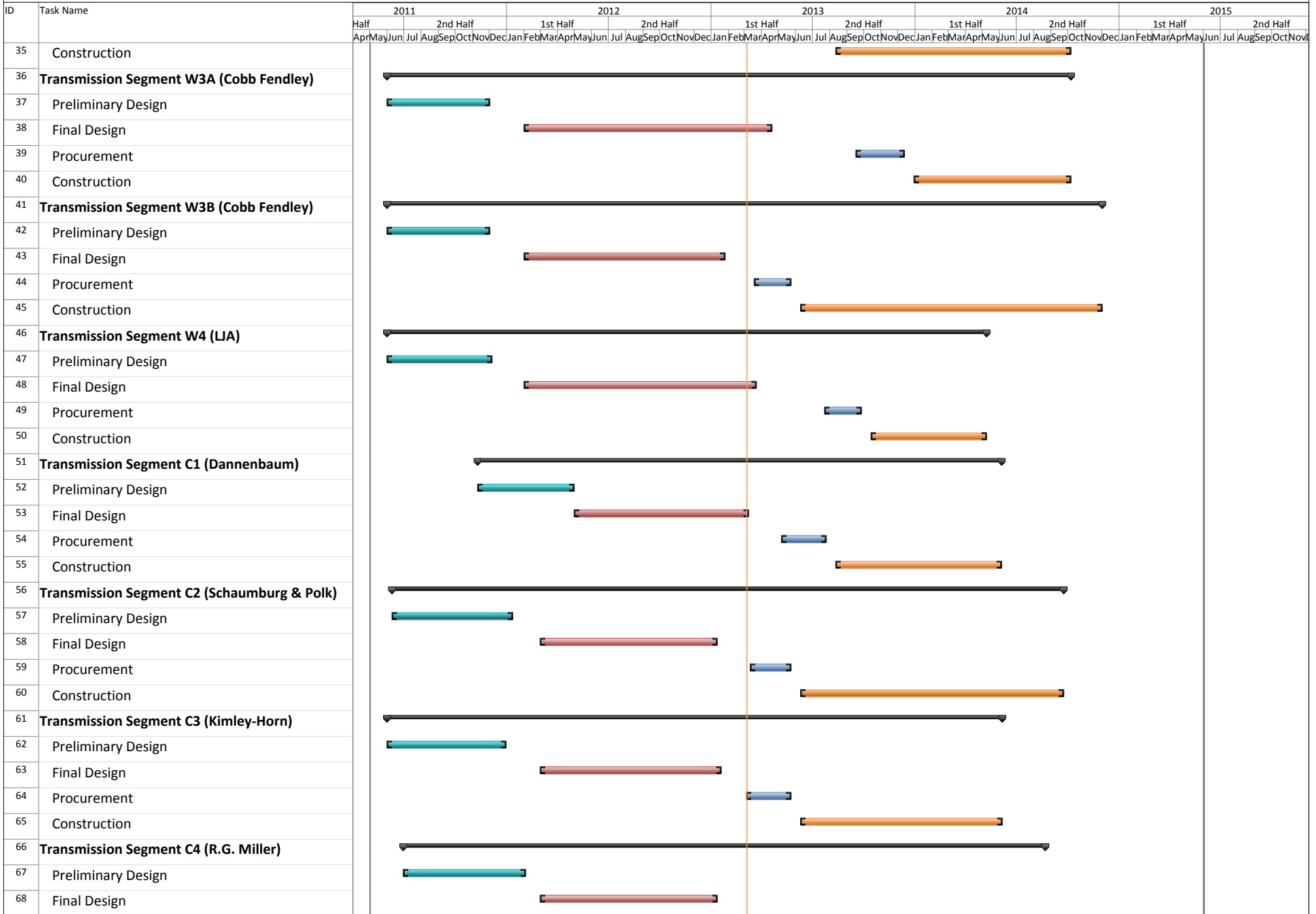
Exhibit 10 - GRP Program Monthly Meeting Log

Exhibit 11 - Construction Photos

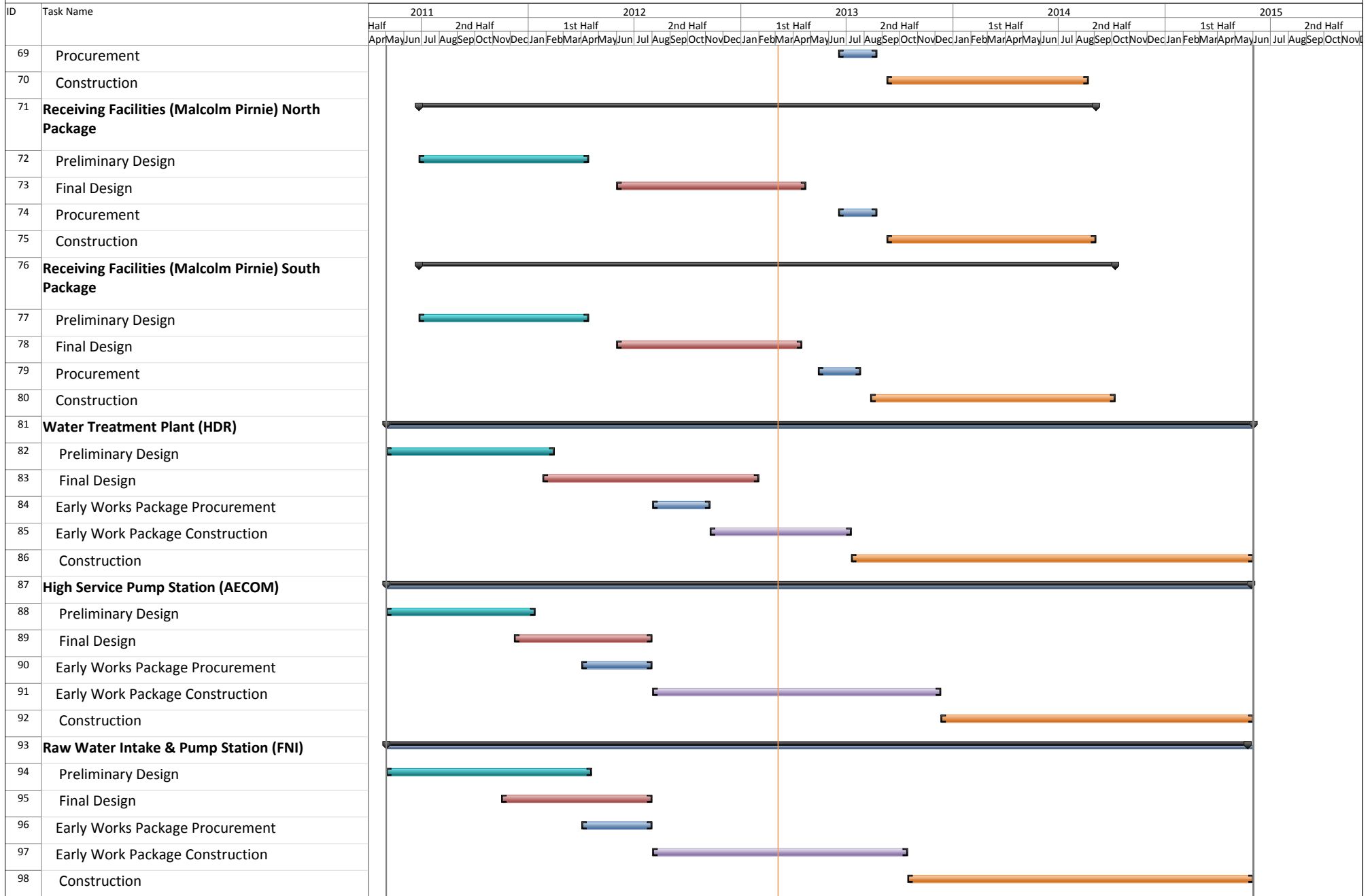




# Exhibit 1 - GRP Program Schedule



## Exhibit 1 - GRP Program Schedule





## Exhibit 2 Selected GRP Program Contracts February 2013

GRP Program Projects - Design										
Engineering Consultant	Project Name	PER Fee	Percent Complete	Metes & Bounds Fee	Percent Complete	Final Design Fee	Percent Complete	CPS Fee	Percent Complete	Engineer's Construction Cost Estimate
Jones & Carter	Transmission Segment T1	\$ 923,031	100%	*		\$ 975,317	98%			\$ 17,600,000
Klotz	Transmission Segment T2	\$ 623,565	100%	\$ 170,848	100%	\$ 843,531	98%			\$ 19,360,000
Espey	Transmission Segment T3	\$ 553,123	100%	\$ 146,847	100%	\$ 901,165	98%			\$ 17,338,095
Lockwood, Andrews, Newnan	Transmission Segment W1	\$ 920,621	100%	\$ 111,182	100%	\$ 1,086,983	100%			\$ 16,207,322
Binkley & Barfield, Inc.	Transmission Segment W2	\$ 956,154	100%	\$ 31,977	100%	\$ 1,603,528	89%			\$ 25,416,084
Cobb Fendley	Transmission Segment W3	\$ 1,161,967	100%	\$ 535,228	95%	\$ 1,609,338	95%			\$ 19,060,670
LJA	Transmission Segment W4	\$ 364,730	100%	\$ 32,482	67%	\$ 528,856	80%			\$ 6,412,252
Dannenbaum	Transmission Segment C1	\$ 332,300	100%	\$ 38,034	100%	\$ 490,523	90%			\$ 7,097,231
Schaumburg & Polk	Transmission Segment C2	\$ 1,003,246	100%	\$ 309,980	100%	\$ 685,068	97%			\$ 11,273,895
Kimley-Horn	Transmission Segment C3	\$ 490,286	100%	\$ 159,740	100%	\$ 616,103	95%			\$ 7,582,514
R.G. Miller	Transmission Segment C4	\$ 217,507	100%	\$ 18,016	100%	\$ 281,449	97%			\$ 4,040,652
Malcolm Pirnie	Receiving Facilities	\$ 598,651	100%	*		\$ 1,209,451	90%			\$ 13,759,750

\*Metes and bounds efforts are included in the final design survey work order.



## Exhibit 2 Selected GRP Program Contracts February 2013

GRP Program Projects - Design										
Engineering Consultant	Project Name	PER Fee	Percent Complete	Metes & Bounds Fee	Percent Complete	Final Design Fee	Percent Complete	CPS Fee	Percent Complete	Engineer's Construction Cost Estimate
HDR, Inc.	Water Treatment Plant	\$ 3,079,273	100%			\$ 7,694,130	95%	\$ 2,914,770.00	1.1%	\$ 135,000,000
AECOM, Inc.	High Service Pump Station	\$ 1,072,948	100%			\$ 3,044,066	100%	\$ 940,719.00	25%	\$ 39,960,000
Freese and Nichols, Inc.	Raw Water Intake and Pump Station	\$ 1,138,540	100%			\$ 1,523,752	100%	\$ 969,860.00	35%	\$ 21,000,000
ACES	Access Rd. & San. Swr. Relocation; Temp. SWF Access Rd.					\$ 435,000	100%	\$ 50,000.00	58%	\$ 577,000; \$ 1,500,000
EMA, Inc.	Fiber Optic System	\$ 161,390	100%			\$ 279,899	85%			\$ 5,364,000
<b>TOTALS</b>		<b>\$ 13,597,332</b>	<b>-</b>	<b>\$ 1,554,334</b>	<b>-</b>	<b>\$ 23,808,160</b>	<b>-</b>	<b>\$ 4,875,349</b>	<b>-</b>	<b>\$ 360,830,066</b>





## Exhibit 2 Selected GRP Program Contracts February 2013

GRP Program Consultant Contracts			
Engineering Consultant	Program Consultant Service	Total Fee of Work Orders	Percent Complete
Brown & Gay Engineers	Program Management	\$ 9,056,918	90%
Raba Kistner	Geotechnical	\$ 145,260	55%
LandTech	Survey	\$ 514,524	89%
Halff	Environmental	\$ 569,919	100%
Property Acquisition Services	Land Acquisition	\$ 1,413,335	48%
V&A	Cathodic Protection	\$ 511,978	56%
KDM	Land Acquisition	\$ 401,593	61%
Andrews Kurth	Legal	\$ 1,800,000	84%
Mike Bellar	Legal	\$ 100,000	39%
Brown & Caldwell	CMAR Contract Development Assistance	\$ 78,202	100%
Greenburg Traurig	Legal	\$ 200,000	48%
AECOM	Transient	\$ 311,400	89%
KBR	CM&I	\$ 533,433	84%
CDM	CA&I	\$ 5,348,633	9%
<b>Total</b>		<b>\$ 15,636,561</b>	



## Exhibit 2

### Selected GRP Program Contracts

### February 2013

GRP Program Projects - Construction			
Construction Project	Construction Contractor	Contract Amount	Percent Complete
GRP Building No. 1	Brookstone	\$ 2,008,673	100%
GRP Temporary Access Road	Lindsey Construction	\$ 977,584	100%
Aqua Texas Sanitary Sewer and Road Relocation	Randy Roan	\$ 525,756	100%
GRP Building No. 1 Fiber Line	Preferred Technologies	\$ 231,158	100%
McCarthy	CMAR	\$ 90,331,558	18%
CMT Early Work Package #2	Geotest	\$ 740,985	14%
<b>Total</b>		<b>\$ 94,815,713</b>	

**Exhibit 3**  
**Monthly GRP Program Financing Report**  
**Fiscal Year 2012**  
Through February 28, 2012

	WIF Funds	2011 Special Projects Revenue Bonds	TWDB 2011 'D' Fund	2012 Special Projects Revenue Bonds	2012a Special Projects Revenue Bonds	Totals
<b>A. Program Budget</b>						
Bond Issue Amount	\$ 21,500,000.00	\$ 83,430,358.49	\$ 67,470,000.00	\$ 175,000,000.00	\$ 165,000,000.00	\$ 512,400,358.49
<b>Total Investment</b>	<b>\$ 21,500,000.00</b>	<b>\$ 83,430,358.49</b>	<b>\$ 67,470,000.00</b>	<b>\$ 175,000,000.00</b>	<b>\$ 165,000,000.00</b>	<b>\$ 512,400,358.49</b>
<b>B. Contracted Costs</b>						
Contracts Completed	\$ 14,833,881.40	\$ 11,209,652.32	\$ 2,152,739.80	\$ -	\$ -	\$ 28,196,273.52
Current Contract Values	\$ 6,177,260.44	\$ 39,238,527.35	\$ 29,796,767.70	\$ 79,984,765.00	\$ -	\$ 155,197,320.49
Change Orders	\$ -	\$ 1,050,597.03	\$ 159,060.00	\$ -	\$ -	\$ 1,209,657.03
Project Close Out	\$ (197,419.18)	\$ (353,853.09)	\$ -	\$ -	\$ -	\$ (551,272.27)
<b>Total</b>	<b>\$ 20,813,722.66</b>	<b>\$ 51,144,923.61</b>	<b>\$ 32,108,567.50</b>	<b>\$ 79,984,765.00</b>	<b>\$ -</b>	<b>\$ 184,051,978.77</b>
<b>C. Expenditures</b>						
Paid Previous Fiscal Years	\$ 19,966,012.81	\$ 24,949,084.37	\$ 478,705.50	\$ -	\$ -	\$ 45,393,802.68
Paid Current Fiscal Year	\$ 229,567.07	\$ 12,118,552.28	\$ 6,373,364.64	\$ 11,593,746.10	\$ -	\$ 30,315,230.09
Issuance Costs	\$ 470,337.08	\$ 2,049,764.39	\$ 751,195.33	\$ 971,769.13	\$ 952,269.99	\$ 5,195,335.92
Capitalized Interest	\$ -	\$ 7,858,241.52	\$ 5,166,233.00	\$ 12,869,175.00	\$ 30,639,669.00	\$ 56,533,318.52
<b>Total</b>	<b>\$ 20,665,916.96</b>	<b>\$ 46,975,642.56</b>	<b>\$ 12,769,498.47</b>	<b>\$ 25,434,690.23</b>	<b>\$ 31,591,938.99</b>	<b>\$ 137,437,687.21</b>
<b>D. Remaining</b>						
Uncontracted Funds	\$ 215,940.26	\$ 22,377,428.97	\$ 29,444,004.17	\$ 81,174,290.87	\$ 133,408,061.01	\$ 266,619,725.28
Fund Balance *	\$ 834,083.04	\$ 36,454,715.93	\$ 54,700,501.53	\$ 149,565,309.77	\$ 133,408,061.01	\$ 374,962,671.28

\*Excluding net investment income



**Exhibit 4**  
**San Jacinto River Authority**  
**Groundwater Reduction Plan**  
**Schedule of Revenues & Expenses - Actual & Budget**  
**For the Six Months Ending February 28, 2013**

	February			Year To Date			
	Actual	Budget	Variance	Actual	Budget	Variance	Variance %
<b>OPERATING REVENUES</b>							
Water sales							
GRP pumping fees	\$ 1,292,279	\$ 1,336,463	\$ (44,184)	\$ 10,016,857	\$ 9,278,862	\$ 737,995	8%
<b>TOTAL OPERATING REVENUES</b>	<b>\$ 1,292,279</b>	<b>\$ 1,336,463</b>	<b>\$ (44,184)</b>	<b>\$ 10,016,857</b>	<b>\$ 9,278,862</b>	<b>\$ 737,995</b>	<b>8%</b>
<b>OPERATING EXPENSES</b>							
Payroll & employee benefit expenses	\$ 208,472	\$ 337,013	\$ 128,541	\$ 1,383,598	\$ 2,022,075	\$ 638,477	32%
Professional fees	8,514	16,667	8,153	77,759	184,002	106,243	58%
Purchased & contracted services	15,931	19,729	3,798	45,695	118,375	72,680	61%
Supplies, materials & utilities	(7,059)	24,183	31,242	2,037,726	2,390,563	352,837	15%
Maintenance repairs, parts & rentals	395	1,280	885	9,181	7,680	(1,501)	(20%)
General & administration	79,006	93,693	14,687	338,486	562,160	223,674	40%
<b>TOTAL OPERATING EXPENSES</b>	<b>\$ 305,259</b>	<b>\$ 492,565</b>	<b>\$ 187,307</b>	<b>\$ 3,892,445</b>	<b>\$ 5,284,855</b>	<b>\$ 1,392,410</b>	<b>26%</b>
<b>NON-OPERATING REVENUES &amp; EXPENSES</b>							
Interest on investments	\$ 93,289	\$ 198,704	\$ (105,415)	\$ 440,449	\$ 1,180,724	\$ (740,275)	(63%)
Other revenues	-	-	-	1,430	-	1,430	100%
Depreciation	(20,892)	-	(20,892)	(123,972)	-	(123,972)	100%
Interest expense	(1,661,355)	(1,501,709)	(159,646)	(7,776,625)	(7,333,113)	(443,512)	6%
Amortized debt issuance expense	(14,142)	-	(14,142)	(84,851)	-	(84,851)	100%
<b>TOTAL NON-OPERATING</b>	<b>\$ (1,603,100)</b>	<b>\$ (1,303,005)</b>	<b>\$ (300,095)</b>	<b>\$ (7,543,570)</b>	<b>\$ (6,152,389)</b>	<b>\$ (1,391,181)</b>	<b>23%</b>
<b>NET INCOME (LOSS)</b>	<b>\$ (616,079)</b>	<b>\$ (459,108)</b>	<b>\$ (156,972)</b>	<b>\$ (1,419,157)</b>	<b>\$ (2,158,382)</b>	<b>\$ 739,225</b>	<b>(34%)</b>



**Exhibit 4 (con't)**  
**GRP Division**  
**Clarification of Actual & Budget Variances**  
(in thousands)

Category	Driver	January 2013	February 2013	FYTD 2013
GRP Pumping Fees	Usage variance due to weather conditions.	72	(44)	738
Payroll and related expenses	Budgeted positions not filled per schedule.	(119)	129	638
Professional Fees	Professional fees less than budgeted.	(2)	8	106
Purchased & Contracted Services	Purchased and contracted services less than budgeted.	11	4	73
Supplies, Materials, Utilities, Maintenance, Repairs, Parts & Rentals	Additional Water Supply, costs not yet realized.	-	-	300
	Reservation Fees 2012 true-up	33	-	33
	Travel, fuel, office supplies, phones, utilities, recruiting and misc. expenses less than budgeted.	(10)	32	19
General & Administration	Allocated labor and related expenses less than budgeted, anticipated a quicker rate of growth than has been actualized.	37	15	224
Non-Operating	Interest/Investment Income	(39)	(105)	(739)
	Depreciation expense	(21)	(21)	(124)
	Bond Issuance Cost Amort expense	(14)	(14)	(85)
	Bond interest expense	(160)	(160)	(444)
		<u>(212)</u>	<u>(157)</u>	<u>739</u>



## Exhibit 5A

### GRP Program Capital Improvements Program Estimate-At-Completion

SERVICES	ESTIMATE-AT-COMPLETION
<b>Pre-Engineering Phase Services</b>	<b>\$ 4,676,398</b>
(GRP Development, Environmental Studies, Pilot Plant, Surface Water Treatment Plant Site Survey)	
<b>Engineering Phase Services</b>	<b>\$ 42,414,422</b>
(Planning, Preliminary Engineering, Final Engineering, Geotechnical, Survey, Metes & Bounds, Subsurface Utility Investigation, Environmental)	
<b>Construction Phase Services</b>	<b>\$ 37,484,404</b>
(Early Equipment Procurement, Engineering Services During Construction, Construction Management & Inspection [Transmission System], Construction Administration & Inspection [SWF], Material Testing)	
<b>Construction</b>	<b>\$ 380,052,206</b>
(Surface Water Transmission System, Raw Water Intake and Pump Station, Surface Water Treatment Plant, High Service Pump Station and Ground Storage Tanks, Surfacewater Receiving Facilities, Infrastructure, Buildings, Roadways, Site Security, Access Roadways)	
Transmission Segment C1 - Construction	\$ 7,097,231
Transmission Segment C2 - Construction	\$ 11,273,895
Transmission Segment C3 - Construction	\$ 7,582,514
Transmission Segment C4 - Construction	\$ 4,040,652
Transmission Segment T1 - Construction	\$ 15,187,475
Transmission Segment T2 - Construction	\$ 14,053,125
Transmission Segment T3 - Construction	\$ 17,338,095
Transmission Segment W1 - Construction	\$ 16,207,322
Transmission Segment W2 - Construction	\$ 25,416,084
Transmission Segment W3 - Construction	\$ 19,060,670
Transmission Segment W4 - Construction	\$ 6,412,252
Receiving Facilities - Construction	\$ 17,107,925
SWF Work Package No. 2	\$ 32,528,047
SWF Work Package No. 3	\$ 47,456,718
SWF Work Package No. 4 (GMP)	\$ 100,373,182
Transmission System Fiber Optic - Construction	\$ 5,364,000
Permanent Access Roadway Construction	\$ 8,000,000
Building No. 1; Access Road; Vegetative Buffer; Construction Materials Testing; SWF Site Vegetation Management; Sanitary Sewer/Access Rd. Relocation <sup>(1)</sup>	\$ 4,328,249
Other Offsite Construction (Stand Pipe, Transmission Line Utility Relocations, Receiving Facility Improvements) <sup>(1)</sup>	\$ 19,954,783
Non-Project Specific Contingency	\$ 1,269,986
<b>Program Management</b>	<b>\$ 12,635,136</b>
(GRP Program Management, Survey, Geotechnical, Transient, Corrosion, Legal Consultants)	
<b>Land Acquisition</b>	<b>\$ 11,278,302</b>
(Legal, Appraisal, Title Research, Land Acquisition Consultants) <sup>(2)</sup>	
<b>Total:</b>	<b>\$ 488,540,868</b>

Bond issuance costs are not included.

<sup>(1)</sup> Costs other than transmission and surface water facilities now separated into two categories

<sup>(2)</sup> Includes revisions to land acquisition cost estimates and recategorizing of contingency.



## Exhibit 5B GRP Program Fund Data as of March 15, 2013

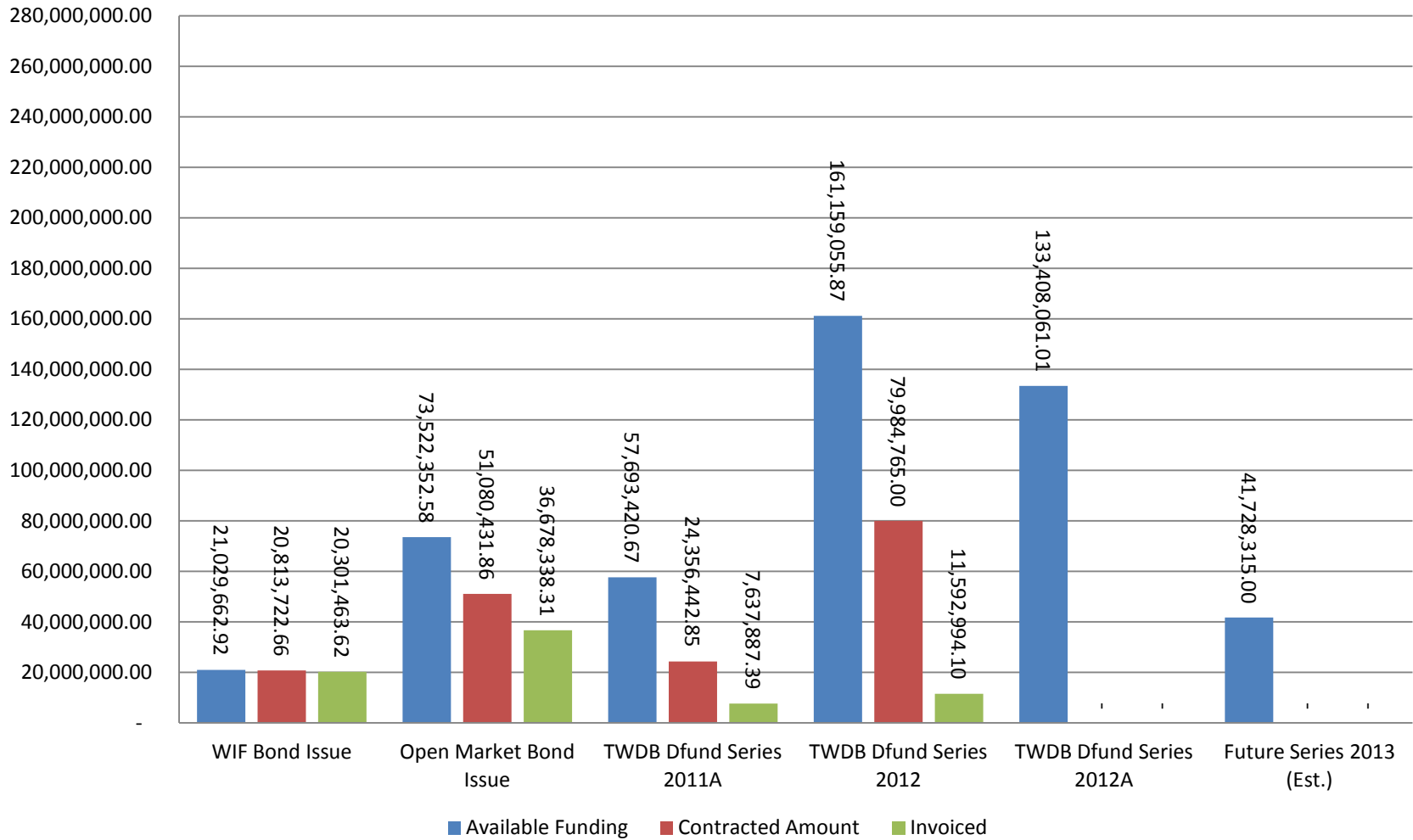
Funding Source	Amount Authorized by Board To-Date	Interest Rate	Bond Costs	Capitalized Interest	Debt Service Reserve Fund	Net Amount Currently Available	Pending Funding Source	Invoiced To-Date	Remaining Amount
WIF Bond Issue	\$ 21,500,000.00	.854% - 2.706%	\$ 470,337.08	\$ -	\$ -	\$ 21,029,662.92		\$ 20,301,463.62	\$ 728,199.30
Open Market Bond Issue (Series 2011)	\$ 83,430,358.49	3% - 5.25%	\$ 2,049,764.39	\$ 7,858,241.52	\$ -	\$ 73,522,352.58		\$ 36,862,355.62	\$ 36,659,996.96
TWDB Dfund Series 2011A	\$ 67,470,000.00	1.22% - 4.97%	\$ 751,195.33	\$ 5,166,233.00	\$ 3,859,151.00	\$ 57,693,420.67		\$ 7,974,188.65	\$ 49,719,232.02
TWDB Dfund Series 2012	\$ 175,000,000.00	1.17% - 4.62%	\$ 971,769.13	\$ 12,869,175.00	\$ -	\$ 161,159,055.87		\$ 11,592,994.10	\$ 149,566,061.77
TWDB Dfund Series 2012A	\$ 165,000,000.00	1.26% - 4.62%	\$ 952,269.99	\$ 14,139,669.00	\$ 16,500,000.00	\$ 133,408,061.01		\$ -	\$ 133,408,061.01
Future Series 2013 (Est.)	\$ 51,000,000.00	4.00%	\$ 739,925.00	\$ 4,966,800.00	\$ 3,564,960.00	\$ -	\$ 41,728,315.00	\$ -	\$ 41,728,315.00
<b>Totals</b>	<b>\$ 563,400,358.49</b>		<b>\$ 5,935,260.92</b>	<b>\$ 45,000,118.52</b>	<b>\$ 23,924,111.00</b>	<b>\$ 446,812,553.05</b>	<b>\$ 41,728,315.00</b>	<b>\$ 76,731,001.99</b>	<b>\$ 411,809,866.06</b>

Notes:

1. These value do not include investment income.
2. Green items are estimates only.
3. Series 2011 bond costs include \$681,132.45 for bond insurance and \$459,709.50 for underwriter's discount.



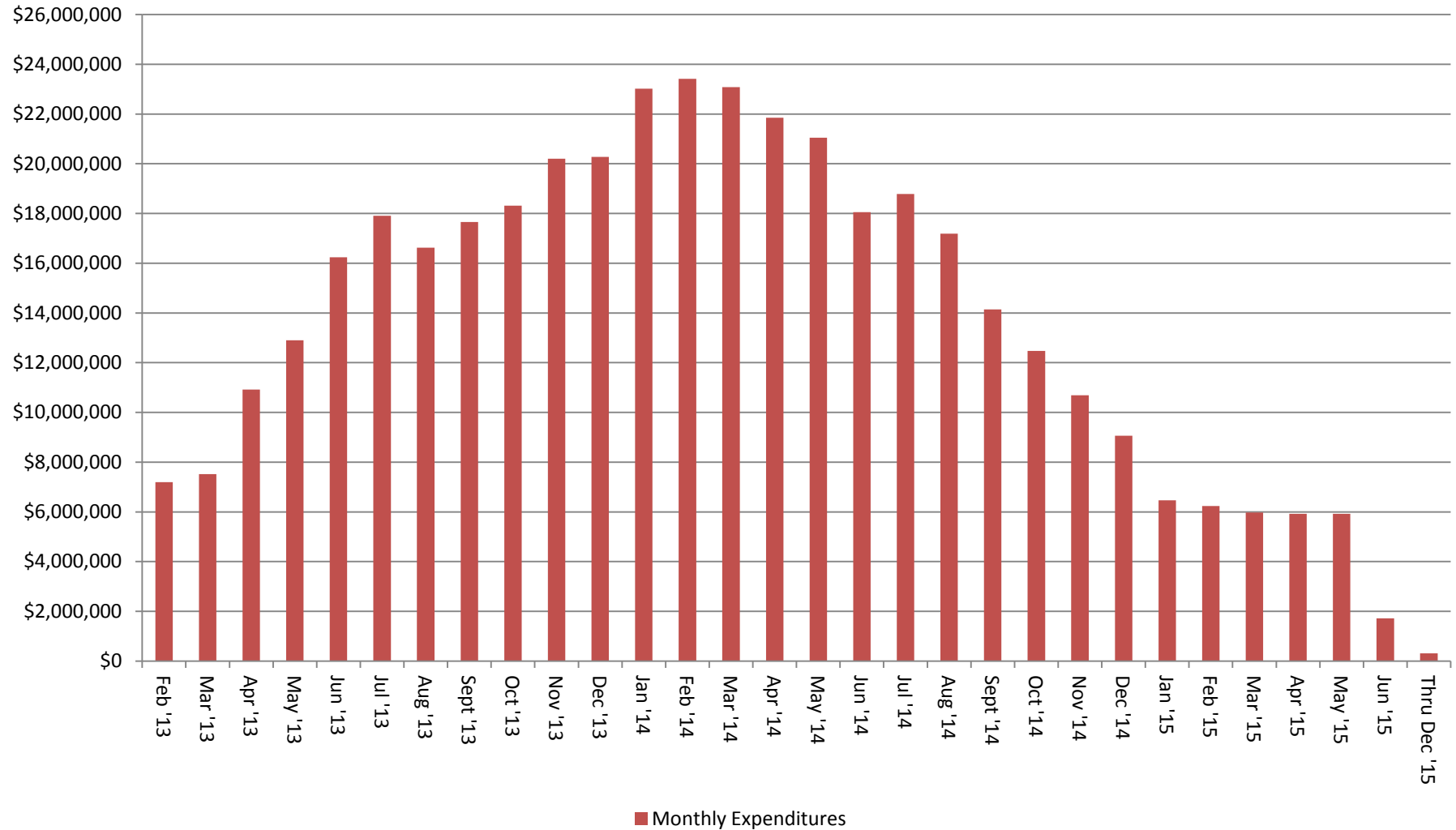
## Exhibit 6 Funding Source Summary March 15, 2013







## Exhibit 7 GRP Program Monthly Forecasted Expenditures for Contracted Services March 15, 2013





## Exhibit 8

### Estimate at Completion (EAC) for Current Authorizations

#### February 28, 2013

#### Surface Water Transmission System

Project	Firm	Amount Authorized by Board	Board Authorized Modifications		Forecasted Modification Amount	Estimate at Completion (EAC)
			Dollars	%		
T1	Jones & Carter	\$ 1,804,848.00	\$ 93,500.00	5.2%		\$ 1,898,348.00
T2	Klotz	\$ 1,637,943.55		0.0%		\$ 1,637,943.55
T3	Espey	\$ 1,555,154.42		0.0%		\$ 1,555,154.42
W1	LAN	\$ 2,118,785.75		0.0%		\$ 2,118,785.75
W2	Binkley & Barfield	\$ 2,591,659.64		0.0%		\$ 2,591,659.64
W3	Cobb Fendley	\$ 3,306,532.50		0.0%		\$ 3,306,532.50
W4	LJA	\$ 876,011.82	\$ 17,574.56	2.0%		\$ 893,586.38
C1	Dannenbaum	\$ 822,823.00		0.0%		\$ 822,823.00
C2	Schaumburg & Polk	\$ 1,583,197.99	\$ 207,547.98	13.1%		\$ 1,790,745.97
C3	Kimley-Horn	\$ 1,202,256.89	\$ 31,936.55	2.7%		\$ 1,234,193.44
C4	R.G. Miller	\$ 526,737.05		0.0%		\$ 526,737.05
WRFs	Malcolm Pirnie/Arcadis	\$ 1,808,102.00		0.0%		\$ 1,808,102.00
CM&I	KBR	\$ 533,432.62		0.0%		\$ 533,432.62
<b>Subtotal - Surface Water Transmission System</b>		<b>\$ 20,367,485.23</b>	<b>\$ 350,559.09</b>	<b>1.7%</b>	<b>\$ -</b>	<b>\$ 20,718,044.32</b>

#### Surface Water Facilities

Project	Firm	Amount Authorized by Board	Board Authorized Modifications		Forecasted Modification Amount	Estimate at Completion (EAC)
			Dollars	%		
WTP	HDR	\$ 17,164,257.21	\$ 533,488.00	3.1%		\$ 17,697,745.21
HSPS	AECOM	\$ 4,324,402.56		0.0%		\$ 4,324,402.56
StandPipe	AECOM	\$ 192,281.00		0.0%		\$ 192,281.00
RWI&PS	Freese and Nichols	\$ 3,901,773.35		0.0%		\$ 3,901,773.35
CMAR	McCarthy	\$ 90,331,558.00		0.0%		\$ 90,331,558.00
CA&I	CDM	\$ 5,348,633.00		0.0%		\$ 5,348,633.00
<b>Subtotal - Surface Water Facilities</b>		<b>\$ 121,262,905.12</b>	<b>\$ 533,488.00</b>	<b>0.4%</b>	<b>\$ -</b>	<b>\$ 121,796,393.12</b>



## Exhibit 8

### Estimate at Completion (EAC) for Current Authorizations

#### February 28, 2013

#### Program Consultant Services & Other Projects

Project	Firm	Amount Authorized by Board	Board Authorized Modifications		Forecasted Modification Amount	Estimate at Completion (EAC)
			Dollars	%		
Prog Mgmt	Brown & Gay	\$ 9,056,918.06		0.0%		\$ 9,056,918.06
Prog Survey	Landtech	\$ 514,524.00		0.0%		\$ 514,524.00
Prog Geo	Raba Kistner	\$ 145,260.00		0.0%		\$ 145,260.00
Prog Tran	AECOM	\$ 161,400.00	\$ 150,000.00	92.9%		\$ 311,400.00
Access Rd	ACES	\$ 434,972.13		0.0%		\$ 434,972.13
Access Rd	S&V Survey	\$ 66,875.00		0.0%		\$ 66,875.00
Land Acq	KDM	\$ 359,887.70	\$ 41,705.00	11.6%		\$ 401,592.70
Land Acq	PAS	\$ 1,413,334.88		0.0%		\$ 1,413,334.88
Prog Env	Halff	\$ 526,862.58	\$ 43,056.29	8.2%		\$ 569,918.87
Prog Fiber	EMA	\$ 441,289.00		0.0%		\$ 441,289.00
Prog Corr	V&A	\$ 866,676.00		0.0%		\$ 866,676.00
Prog Svcs & Projs	Other Program Services & Projects	\$ 3,787,354.94		0.0%		\$ 3,787,354.94
<b>Subtotal - Program Consultant Services &amp; Other Projects</b>		<b>\$ 17,775,354.29</b>	<b>\$ 234,761.29</b>	<b>1.3%</b>	<b>\$ -</b>	<b>\$ 18,010,115.58</b>

#### Construction Contracts

Project	Firm	Amount Authorized by Board	Board Authorized Modifications		Forecasted Modification Amount	Estimate at Completion (EAC)
			Dollars	%		
GRP Bldg #1	Brookstone	\$ 2,009,900.00	\$ (1,227.00)	-0.1%		\$ 2,008,673.00
Bldg #1 CMT	Aviles	\$ 48,193.60		0.0%		\$ 48,193.60
Landscape Buffer	KeyScope	\$ 87,255.00		0.0%		\$ 87,255.00
Temp Access Road	Lindsey Construction	\$ 986,431.00	\$ (8,847.15)	-0.9%		\$ 977,583.85
Access Road CMT	Terracon Consultants	\$ 12,842.50		0.0%		\$ 12,842.50
Aqua Texas Sewer	Randy Roan	\$ 516,650.50	\$ 9,106.17	1.8%		\$ 525,756.67
Aqua Texas CMT	Aviles	\$ 31,057.20		0.0%		\$ 31,057.20
Bldg #1 Fiber Line	Preferred Technologies	\$ 257,339.65	\$ (26,182.09)	-10.2%		\$ 231,157.56
SWF EWP2 CMT	Geotest	\$ 1,346,397.00		0.0%		\$ 1,346,397.00
Other	Other Construction Contracts	\$ 483,263.32		0.0%		\$ 483,263.32
<b>Subtotal - Construction Contracts</b>		<b>\$ 5,779,329.77</b>	<b>\$ (27,150.07)</b>	<b>-0.5%</b>	<b>\$ -</b>	<b>\$ 5,752,179.70</b>

#### Totals

	Amount Authorized by Board	Board Authorized Modifications		Forecasted Modification Amount	Estimate at Completion (EAC)
		Dollars	%		
Subtotal - Surface Water Transmission System	\$ 20,367,485.23	\$ 350,559.09	1.7%	\$ -	\$ 20,718,044.32
Subtotal - Surface Water Facilities	\$ 121,262,905.12	\$ 533,488.00	0.4%	\$ -	\$ 121,796,393.12
Subtotal - Program Consultant Services & Other Projects	\$ 17,775,354.29	\$ 234,761.29	1.3%	\$ -	\$ 18,010,115.58
Subtotal - Construction Contracts	\$ 5,779,329.77	\$ (27,150.07)	-0.5%	\$ -	\$ 5,752,179.70
<b>Total</b>	<b>\$ 165,185,074.41</b>	<b>\$ 1,091,658.31</b>	<b>0.7%</b>	<b>\$ -</b>	<b>\$ 166,276,732.72</b>



## Exhibit 9 Land Acquisition Summary February 2013

Project	Anticipated Number of Easements to Acquire	Easements Acquired This Month	Easements Acquired Total
Transmission System Segment T1	62	1	44
Transmission System Segment T2	2	0	0
Transmission System Segment T3	22	0	1
Transmission System Segment C1	16	2	8
Transmission System Segment C2	77	6	8
Transmission System Segment C3	32	3	16
Transmission System Segment C4	4	0	0
Transmission System Segment W1	32	1	14
Transmission System Segment W2	8	0	0
Transmission System Segment W3	178	9	64
Transmission System Segment W4	7	0	0
<b>Totals:</b>	<b>440</b>	<b>22</b>	<b>155</b>



## Exhibit 10

### GRP Program Monthly Meeting Log

### February 2013

Meeting	Agenda	Location	Date	Participants
<b>Pre-Proposal Meeting Transmission Segment T2</b>	Request for Proposal documents	G&A Office	2/7/2013	T2 Consulting Team, GRP Program Team, Prospective Proposal Offerers
<b>Proposal Opening Transmission Segment T1</b>		G&A Office	2/12/2013	T1 Consulting Team, GRP Program Team, Prospective Proposal Offerers, General Public
<b>Pre-Proposal Meeting Transmission Segment W1-B</b>		G&A Office	2/12/2013	W1-B Consulting Team, GRP Program Team, Prospective Proposal Offerers
<b>City of Conroe Transmission Lines</b>	Preview layout and route tour	City of Conroe	2/12/2013	SJRA, PR, Conroe Mayor, Schaumberg & Polk
<b>Construction Communication Team</b>	Construction Communication Plan - to minimize the impact of construction to the community	Woodlands Operations Building	2/12/2013	Construction Communication Team, GRP Staff, PR
<b>Indian Springs Village Association</b>	Program Updates	Woodland's Township	2/12/2013	SJRA, local government and civic leaders
<b>Panther Creek Village Association</b>	Program Updates	Woodland's Township	2/14/2013	SJRA, local government and civic leaders
<b>Agency Review Coordination</b>	Water Treceiving Facilities Construction Review Documents	TCEQ -Austin, Tx	2/15/2013	TCEQ staff, TWDB staff, GRP Program Team, WRF Consultant



## Exhibit 10 GRP Program Monthly Meeting Log February 2013

Meeting	Agenda	Location	Date	Participants
<b>College Park Village Association</b>	Program Updates	FD Emergency Training Center, Woodlands	2/18/2013	SJRA, local government and civic leaders
<b>Grogan's Mill Village Association</b>	Program Updates	Woodland's Township	2/18/2013	SJRA, local government and civic leaders
<b>Pre-Proposal Meeting Transmission Segment W1-A</b>	Request for Proposal documents	G&A Office	2/19/2013	W1-A Consulting Team, GRP Program Team, Prospective Proposal Offerers
<b>Proposal Opening Transmission Segment T2</b>		G&A Office	2/19/2013	T2 Consulting Team, GRP Program Team, Prospective Proposal Offerers, General Public
<b>Construction Committee</b>		Conference Call	2/21/2013	Construction Committee, GRP Program Team staff
<b>GRP Review Committee</b>		G&A Office	2/25/2013	Review Committee, GRP Program Team, general public
<b>Sterling Ridge Village Association</b>	Program Updates	Woodland's Township	2/25/2013	SJRA, local government and civic leaders
<b>Proposal Opening Transmission Segment W1-B</b>		G&A Office	2/26/2013	W1-B Consulting Team, GRP Program Team, Prospective Proposal Offerers, General Public
<b>Pre-Proposal Meeting Transmission Segment W2-A</b>		G&A Office	2/26/2013	W2-A Consulting Team, GRP Program Team, Prospective Proposal Offerers
<b>Cochran's Crossing Village Association</b>	Program Updates	Woodland's Township	2/26/2013	SJRA, local government and civic leaders



## Exhibit 10

### GRP Program Monthly Meeting Log

### February 2013

Meeting	Agenda	Location	Date	Participants
SJRA Board of Directors		G&A Office	2/28/2013	SJRA Board of Directors, GRP Program Team staff, general public
CM&I	Design Progress Meetings	SJRA	Various	SJRA, Program CM&I Consultants
CDM Smith	Construction Administration and Inspection	GRP Building 1	Weekly	SJRA, McCarthy, CDM Smith, Geotest
Land Acquisition Conference Calls			Weekly	Andrews Kurth, SJRA
CM&I	Program Managers	SJRA	Weekly	KBR, Program Managers, SJRA

**EXHIBIT 11**  
**Construction Photos**





**EXHIBIT 11**  
**Construction Photos**



*Raw Water Pump Station - View from current end of bridge structure looking toward the Dam - March 15, 2013*

**EXHIBIT 11**  
**Construction Photos**



*Ground Storage Tank No. 1 flooded for water curing of foundation- March 15, 2013*

**EXHIBIT 11**  
**Construction Photos**



*Concrete pouring operation at Raw Water Pump Station - March 15, 2013*

**EXHIBIT 11**  
**Construction Photos**

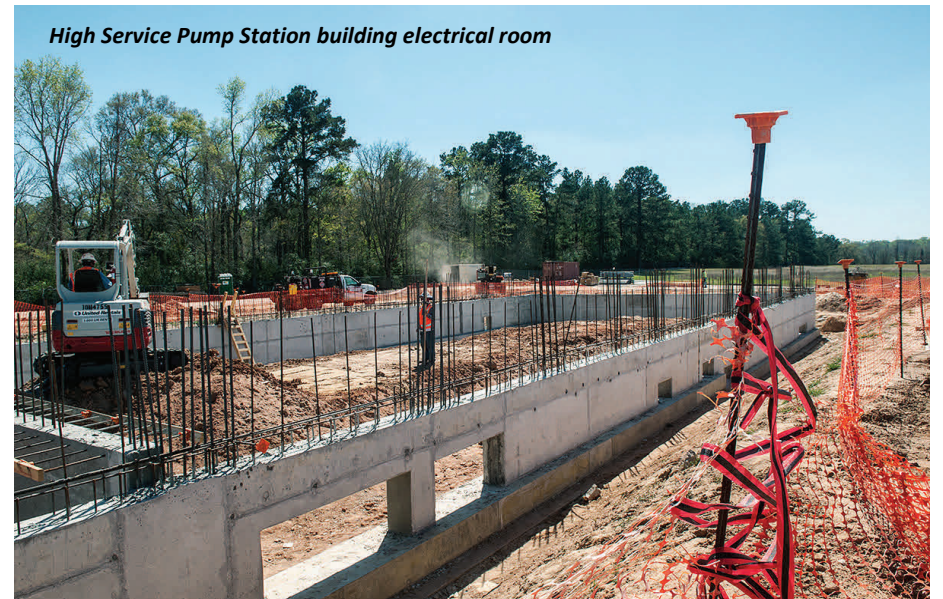
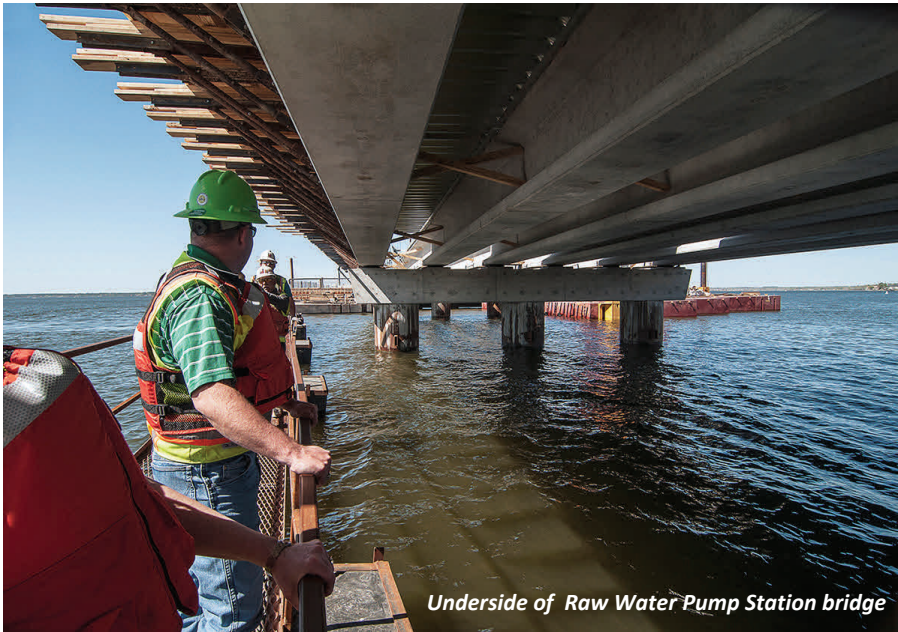


*Raw Water Pump Station -  
Continuation of pier installation - March 15, 2013*



*Raw Water Pump Station - Concrete pour at new beam - March 15, 2013*

**EXHIBIT 11**  
**Construction Photos**



## EXHIBIT 11 Construction Photos



**EXHIBIT 11**  
**Construction Photos**



*Barge docks from Lake Conroe office building at day's end*