

GROUNDWATER REDUCTION PLAN PROGRAM

MONTHLY PROGRESS REPORT - JANUARY 2013



TABLE OF CONTENTS

Table of Contents	i	4.5 Claims	4-2
Acronyms and Definitions	ii	4.6 CIP Cash Flow	4-2
1.0 Planning	1-1	4.7 CIP Budget Estimates at Completion	4-2
1.1 Strategic	1-1	4.8 Land Acquisition	4-2
1.2 Engineering and Construction	1-1	5.0 Quality Assurance	5-1
1.3 Meetings	1-1	6.0 Exhibits	6-1
2.0 Schedule	2-1		
2.1 Engineering	2-1		
2.2 Construction	2-1		
3.0 Procurement	3-1		
3.1 Solicitations	3-1		
3.2 Contract Awards	3-1		
3.3 Process and Procedures	3-1		
3.4 Look Ahead	3-1		
4.0 Cost Report and Financial Considerations	4-1		
4.1 GRP Program and GRP Project CIP Budget(s)	4-1		
4.2 Financial Report	4-1		
4.3 Invoices/Applications for Payment	4-1		
4.4 Contract Amendments and Change Orders	4-1		





ACRONYMS AND DEFINITIONS

Acronyms

CA&I	Construction Administration and Inspection
CCT	Construction Communication Team
CIP	Capital Improvement Project
CM&I	Construction Management and Inspection
CMAR	Construction Manager at Risk
CMT	Construction Material Testing
CSB / P	Competitive Sealed Bid / Proposal
EA	Environmental Assessment
EAC	Estimate At Completion
GIS	Geographic Information System
GRP	Groundwater Reduction Plan
GST	Ground Storage Tank
HSPS	High Service Pump Station
LSGCD	Lone Star Groundwater Conservation District
LVGU	Large Volume Groundwater User
PER	Preliminary Engineering Report
PMP	Program Management Plan
PSA	Professional Services Agreement
QA	Quality Assurance
RFB / Q / P	Request For Bids / Qualifications / Proposals
RWI / RWPS	Raw Water Intake / Raw Water Pump Station
SJRA	San Jacinto River Authority
SOQ	Statement Of Qualifications
SWF	Surface Water Facilities (SWTP, HSPS and RWI)
SWRF	Surface Water Receiving Facilities
SWTP	Surface Water Treatment Plant
TBD	To Be Determined
TCEQ	Texas Commission on Environmental Quality
TWDB	Texas Water Development Board
TxDOT	Texas Department Of Transportation
WIF	Water Infrastructure Fund

Definitions

GROUNDWATER REDUCTION PLAN (GRP)	The document developed and filed with the LSGCD indicating SJRA's plan to reduce the permitted 2009 groundwater pumpage of its GRP Participants by 30%. The GRP is administered by the SJRA, including any supplements, revisions, or amendments.
GRP PROGRAM TEAM	SJRA staff, Program Management Consultant (Brown & Gay Engineers, Inc.) staff, and technical consultants working interdependently toward meeting the goals of the Groundwater Reduction Plan.
GRP ADMINISTRATOR	The SJRA General Manager's designee who administers the SJRA Groundwater Reduction Plan and GRP Contract with GRP Participants.
GRP CONTRACT	Contract between the SJRA and a Participant to be included in the SJRA's efforts to meet the surface water conversion requirements mandated by the LSGCD.
JOINT GRP	GRP which is prepared to include (takes into account) LVGUs who have executed a GRP Contract with the SJRA to join the SJRA's GRP. Contracted LVGUs obtain LSGCD groundwater reduction regulation compliance through the SJRA's Joint GRP without preparing and submitting a GRP.
LARGE VOLUME GROUNDWATER USER(S) (LVGU)	Any person or entity that, through a single well or a combination of wells, actually produces or is authorized by permit(s) issued by the LSGCD to produce 10 million gallons or more of groundwater annually on or after January 1, 2008.
PARTICIPANT(S)	Regulated User(s) that enters into and remains subject to a written agreement with the SJRA to be included in the SJRA's GRP and includes the legal successors or assigns of Participant(s).
REGULATED USER(S)	Any public or private entity or person that is or becomes subject to the District Regulatory Plan established by the LSGCD and includes any amendments, revisions or supplements thereto as may be adopted by the LSGCD.
SJRA GRP DIVISION	Division of the SJRA responsible for GRP compliance, and the management, administration, operation and maintenance of the surface water facilities and surface water transmission system.

1.0 PLANNING

The GRP Program Team meets regularly for the purposes of setting performance expectations and goals of the GRP Program, identifying the efforts required to achieve these objectives, evaluating the effectiveness of such efforts, and modifying those efforts based upon both internal and external performance evaluations.

1.1 Strategic

Key efforts during the month of January, 2013 include preparation for SWF Work Package No.4. This final work package will carry the SWF construction to completion and will determine the Guaranteed Maximum Price (GMP) for the SWF.

On the surface water transmission side of the program the focus was on identifying potential utility conflicts as well as other complications that need to be resolved before construction can start. Solutions to these conflicts take the form of utility relocation agreements and/or water transmission line realignments.

1.2 Engineering and Construction

All of the Transmission Line Segments are at or nearing the final design stage. During final design, the designers and project managers are reviewing transmission routes for any conflicts and opportunities to resolve them. This effort identifies the need to relocate conflicting utilities and also to make alignment adjustments. During this period, project managers and design consultants worked to finalize agreements for utility relocation with various utilities. Alignment adjustments are proposed on Transmission Line Segments C1 and C2 that help to resolve conflicts experienced by property owners. This benefits the GRP Program by facilitating easement acquisition and building local support.

Proposals were opened on January 24, 2013 for Work Package No.4 for the SWF. The proposals are being evaluated and recommendations for the components of Work Package No.4 will be taken to the SJRA Board of Directors for approval at the March Board Meeting.



Transmission Segment T1 Pre-Proposal Meeting

1.3 Meetings

The GRP Program Team continued meeting with GRP Program stakeholders this month, in addition to its weekly GRP Program and GRP Project status meetings and monthly progress meetings with surface water transmission system and SWF design consultants. A listing of these meetings may be seen in attached Exhibit 10.

Meetings of special note that were led or attended by the GRP Program Team this month included the following:

- 1/2/13 SJRA Woodlands System Improvement Agreement** – Meeting to discuss a memorandum that will define the roles and responsibilities for system improvements to The Woodlands water system required to receive and distribute surface water
- 1/8/13 Indian Springs Village Association** – GRP update and discussion of traffic impacts to residents in The Woodlands.
- 1/9/13 Woodlands Joint Powers Association** – GRP construction schedule and budget update
- 1/15/13 South Montgomery County Mobility Committee** – GRP update and discussion of traffic impacts and construction schedule in South Montgomery County
- 1/17/13 Teaswood Property Management Association** – Discussion of easements and routing of Transmission Line Segment C2
- 1/21/13 Pre-Proposal Meeting for Transmission Line Segment T1** – Mandatory pre-proposal meeting for construction firms offering proposals for construction of this line segment.



1.0 PLANNING (CONTINUED)

- 1/23/13 GRP Technical Status Meeting—Conroe (north)** – Meeting with Participants’ and local agencies’ technical staffs to discuss design technical issues.
- 1/24/13 GRP Technical Status Meeting—Woodlands (south)** - Meeting with Participants’ and local agencies’ technical staffs to discuss design technical issues.
- 1/24/13 SWF Proposal Package No.4 Opening** – Receive and open proposals for Work Package 4 for the Surface Water Facility.



2.0 SCHEDULE

Currently, the GRP Program remains on schedule for the delivery of treated surface water to select Joint GRP Participants on or before January 1, 2016. A simplified GRP Program schedule may be found in attached Exhibit 1.

2.1 Engineering

Surface Water Transmission System

Segment T1 – Design is complete, first advertisement for proposals on 1/15.

Segment T2 – Design is complete, first advertisement for proposals on 1/22.

Segment T3 – Final design is underway incorporating a re-alignment to remove the pipeline from TxDOT right-of-way.

Segment W1 – The 100% complete drawings and specifications have been submitted, first advertisement for proposals on project W1B on 1/29.

Segment W2 – The 90% complete drawings and specifications have been submitted. The design contract has been amended to include designs for pavement replacement on Grogan's Mill.

Segment W3 – The 95% complete drawings and specifications have been submitted. This project includes pavement replacement on Grogan's Mill as well as water line routing in the Budde Road area. A section of segment W3 along Maplewood Drive will be constructed by the City of Oak Ridge North in conjunction with a storm sewer project the City plans to do along the same route. This coordination is being done to minimize impact to the neighborhood and save costs.

Segment W4 – The 90% complete drawings and specifications have been submitted and are under review.

Segment C1 – The 90% complete drawings and specifications have been submitted. Realignment of the pipeline in the Kaleo Way vicinity will cause a minor delay in final design of this segment but will not delay the overall schedule.

Segment C2 – The 90% complete drawings and specifications have been submitted and are under review.

Segment C3 – The 100% complete drawings and specifications have

been submitted and are under review.

Segment C4 – 90% review comments have been provided to the design consultant. Work continues on final design.

Surface Water Receiving Facilities – 90% review comments were provided to the design consultant. Coordination efforts continue between the Water Receiving Facility consultant and transmission line design consultant as well as Participants who plan to use their own consultant to design their receiving facilities.

Surface Water Facilities

Raw Water Intake – Design is complete and construction is underway.

Surface Water Treatment Plant – Design is complete and construction is underway.

High Service Pump Station and Ground Storage Tanks – Design is complete and construction is underway.

Fiber Optic Communications System – The Fiber Optic Communications design consultant is currently addressing the 60% design comments and will submit 90% drawings and specifications in February.

Construction Management and Inspection (CM&I) – The CM&I team is engaged in reviewing plans and specifications and participates in pre-proposal meetings. Preparations are being made for beginning the construction phase.

Construction Administration and Inspection (CA&I) – The CA&I staff is currently working with the CMAR and SJRA staff to review the Work Package No. 4 proposals.

Cathodic Protection – The Cathodic Protection consultant continues their review of 90% and 100% drawings and specifications and has completed the corrosivity reports for the transmission line segments. They have also continued efforts for the construction phase of cathodic protection for the Surface Water Facilities.

2.2 Construction

Surface Water Transmission System – Construction is scheduled to begin on Transmission Line Segment T1 in April with other segments to follow.

Surface Water Receiving Facilities – The City of Oak Ridge North will

2.0 SCHEDULE (CONTINUED)

begin construction of its water plant renovation in March. This project includes surface water receiving facilities for the City of Oak Ridge North

Surface Water Facilities

Raw Water Intake - The bridge abutment and pipe foundation at the Dam were completed in January. The installation of the two (2) 48" Raw-Water pipelines were installed through the Dam and permanently encased in concrete. Drilled shafts for the Raw Water Intake structure are ongoing. The pre-cast bridge girders are scheduled to be onsite in early February.

Surface Water Treatment Plant - Water Treatment Plant work was released in Early Work Package No.3 and the earthwork is complete at the Membrane and GAC Buildings. The Pre-Treatment excavation and mass balance of the site are underway. The foundations and below foundation work is in progress at both the Membrane and GAC facilities.

High Service Pump Station and Ground Storage Tanks - The concrete foundation at the High Service Pump Station is an ongoing process. The main pump-room and electrical/control area foundations are being installed ahead of schedule. Progress continues at the Ground Storage Tanks (GST) as the below foundation piping is 95% complete. The slab-on-grade is rapidly approaching and soon the precast walls will be underway. Material is delivered daily and we anticipate progress will be moving at a rapid pace shortly.

Fiber Optic Communications System – The Fiber Optic Communications design consultant continued review of surface water line segment and receiving facilities design milestone submittals. All 60% reviews have been completed. 90% reviews of Segments W3B, W4, C2, and SWRF have been completed.



Future wall at High Service Pump Station Discharge Structure

3.0 PROCUREMENT

3.1 Solicitations

Solicitations for proposals for construction were made for the following:

- San Jacinto River Authority RFP 13-027 Segment T1 Proposed 60" Water Transmission Line
- San Jacinto River Authority RFP 13-031 Segment W1B Proposed 48" Water Transmission Line
- San Jacinto River Authority RFP 13-028 Segment T2 Proposed 60", 54" AND 12" Water Transmission Line

3.2 Contract Awards

- Professional Services Agreement and Work Order No. 1 with Lockwood Andrews & Newnam, Inc., for Design of 16-inch Well Collection Line from Well Nos. 9 & 10 at Elevated Storage Tank No. 3 to Kuykendahl Road Right of Way in The Woodlands
- Work Order No. 7 with Lockwood Andrews & Newnam, Inc., for 16-inch Well Collection Line from Kuykendahl Road Right of Way to Water Plant No. 3 in The Woodlands
- Amendment No. 3 to Work Order No. 3 with Binkley & Barfield, Inc., for Final Design Modifications to Surface Water Transmission Line, Segment W2, for the GRP Program
- Work Order No. 2 with KBR, Inc., for Construction Management and Inspection Services for the Surface Water Transmission System for the GRP Program
- Amendment No. 1 to Work Order No. 8 with Freese and Nichols, Inc., for Construction Phase Services for Raw Water Intake and Pump Station.
- Work Order No. 6 for Surface Water Transmission System, Segment T3, Partial Realignment Design Services for the GRP Program

3.3 Process and Procedures

The GRP Program continues to utilize traditional and alternative project delivery methods in the procurement of contractor services.

3.4 Look Ahead

The following list provides a very general look ahead at known and anticipated GRP Program professional services and construction contractor solicitations, contract awards, contract/work order amendments, and assorted agreements such as utility relocations and easement encroachments. Solicitations may be combined, modified, or canceled or time frames may be modified as deemed necessary.

- San Jacinto River Authority RFP 13-030 Segment W1A Proposed 54", 48", and 16" Water Transmission Line
- San Jacinto River Authority RFP 13-032 Segment W2A Proposed 42" & 30" Water Transmission Line.
- Professional Services Agreement and Work Order No. 1 with LJA Engineering for Preliminary and Final Design, Topographic Survey, Geotechnical Investigation, Environmental Assessment, and Construction Phase Services for a 16-inch Well Collection Line and 12-inch Loop Water Line in College Park in The Woodlands .
- Amendment No. 4 to Contract with Construction Manager at Risk for Surface Water Facilities Work Package No. 4. and Final Guaranteed Maximum Price for the GRP Surface Water Facilities.
- Work Order No. 3 with Geotest Engineering, Inc. for Construction Materials Testing for the GRP Surface Water Facilities Work Package No. 4.
- Construction Contract for Surface Water Transmission Line Segment T1 for the GRP Program.
- Work Order No. 5 with Jones & Carter Engineering Inc. for Construction Phase Services by Design Consultant during construction of Surface Water Transmission Line Segment T1 for the GRP Program.
- Professional Services Agreement and Work Order No. 1 for Construction Materials Testing during construction of Various Surface Water Transmission Line Segments for the GRP Program.





4.0 COST REPORT AND FINANCIAL CONSIDERATIONS

4.1 GRP Program and GRP Project CIP Budget(s)

Through this month, the GRP Program remains under its \$500,000,000.00 Capital Improvement Project (CIP) Program planning budget and forecasts continue to indicate it will be completed under budget (see also subsection 4.6 and Exhibit 7). A summary of the GRP Program's CIP budget and cost considerations as reported to the GRP Review Committee and the SJRA Board of Directors is provided as attached Exhibit 3.

A summary of the SJRA GRP Division's Fiscal Year 2013 (FY13) operating budget (revenue and expenditures) is provided as Exhibit 4. The budget includes all normal and customary expenses for operating a utility based, non-profit business, including debt service, and is developed annually for approval by the SJRA Board of Directors.

The GRP Program is currently operating under the SJRA Board of Director's authorized CIP budget of \$512,400,358.49 (net - \$446,804,553.05). The funding available in the CIP budget allows the SJRA to secure all of the resources required to perform professional services, construction services, and procure long lead time equipment during the design phase of the GRP Program.

4.2 Financial Report

Funding sources presently applied towards the GRP Program CIP budget include the TWDB's Water Infrastructure Fund (WIF; \$21,500,000.00 [gross]; \$21,029,662.92 [net]), the sale of open market Special Project Revenue Bonds, Series 2011 (\$83,430,358.49 [gross]; \$73,522,352.58 [net]), and TWDB "D" Funds, Series 2011A (\$67,470,000.00 [gross]; \$61,552,571.67 [net]) Series 2012 (\$175,000,000.00 [gross]; \$161,159,055.87 [net]) and 2012A (\$165,000,000 [gross], \$133,400,061.01 [net]). Approved funding to-date represents approximately 89.4% of the planned \$500,000,000.00 Program budget. The GRP Program's funding, contracted commitments, and forecasted expenditures are summarized in Table 4.1 and further detailed in attached Exhibits 5A, 5B and 6.

Please note that financial reports do not include investment income.

4.3 Invoices/Applications for Payment

GRP Program level and GRP Project level consultant Invoices and/or construction contractor Applications for Payment received through January 31, 2013 are represented in the Table 4.1 (Item F, January, 2013). A detailed breakdown of consultant invoices and/or construction contractor pay applications received for services performed this month appears in Table 4.2.

TABLE 4.1 - GRP PROGRAM FUNDING AND CONTRACTED COMMITMENTS SUMMARY

	PREVIOUS (THRU 12/31/12)	JANUARY 2013
A. APPROVED FUNDING	\$512,400,358.49	\$512,400,358.49
B. AVAILABLE FUNDING AFTER COSTS	\$450,671,704.05	\$450,671,704.05
C. APPROVED CONTRACTS	\$173,135,698.68	\$10,496,042.67
D. PROJECT CLOSE OUT	(\$551,247.12)	(\$25.15)
E. UNCONTRACTED FUNDING (B - C + D; B DEC - C - C DEC + D + D DEC)	\$277,307,693.39	\$266,811,675.87
F. INVOICED	\$67,052,297.72	\$4,390,332.87
G. REMAINING FUNDS (B - F; B - F - F DEC)	\$383,619,704.33	\$379,229,073.46

4.4 Contract Amendments and Change Orders

Each of the GRP Program agreements, work orders and amendments listed in section 3.2 were presented to the GRP Review Committee Meeting on January 22, 2013 and to the SJRA Board of Directors Meeting on January 24, 2013, and were authorized by the SJRA Board of Directors for execution by the SJRA General Manager:

TABLE 4.2 - GRP PROGRAM CONSULTANT INVOICE AND CONTRACTOR PAY APPLICATION SUMMARY

	PREVIOUS (THRU 12/31/12)	JANUARY 2013
ENGINEERING & SPECIALTY CONSULTANT (PROGRAM)	\$15,645,717.72	\$1,333,790.37
ENGINEERING & SPECIALTY CONSULTANT (PROJECT)	\$36,812,112.44	\$1,203,676.82
CONSTRUCTION CONTRACTOR / CMAR	\$14,585,467.56	\$1,852,865.68
TOTALS:	\$67,052,297.72	\$4,390,332.87



4.0 COST REPORT AND FINANCIAL CONSIDERATIONS (CONTINUED)

4.5 Claims

No claims were identified this month.

4.6 CIP Cash Flow

The GRP Program CIP cash flow through SJRA FY2015 reflects known expenditures through January 2013 and estimates for future expenditures were updated this month. All active and currently identified future GRP Program Projects and initiatives are included in the cash flow. A graph of forecasted monthly expenditures from the referenced cash flow is attached as Exhibit 7.

4.7 CIP Budget Estimates at Completion

4.7.1 GRP Program

The **total gross funds** (including capitalized interest) required to execute Phase I of the GRP Program are currently estimated at \$574,485,358.49.

4.7.2 GRP Projects

The GRP Program Projects remained within their approved contract budgets through this month. Exhibit 8 indicates each active GRP Program Project and GRP Program contract forecasted estimate at completion (EAC). Additionally, all current GRP Program contracts, including their respective SJRA Board of Directors approved budgeted amounts and percent complete, are listed in Exhibit 2.

4.8 Land Acquisition

The GRP Program Team, with the support of its assorted land acquisition consultants, continued to make steady progress in acquiring the land and easements necessary for the surface water transmission system. The preparation of metes & bounds descriptions for easements along the transmission line routes continued and is nearing completion. Fourteen (14) easements were acquired in January 2013, primarily along Segment C2, C3 and W3, bringing the total number of easements acquired to one-hundred thirty three (133). Negotiations to acquire other easements throughout the system are at varying stages of completion. A cumulative summary of easement acquisition activity is provided in attached Exhibit 9.



5.0 QUALITY ASSURANCE

5.1 Final Design

This month's QA activity associated with final design deliverables produced by the engineering consultants is as follows:

- **Jones & Carter (T1)** - TCEQ Dam Safety division approved Segment T1 plans on 1/15/13.
- **Klotz (T2)** - Montgomery County Engineer approved Segment T2 plans on 1/15/13
- **Espey (T3)** - 100% final design drawings and specifications were submitted to the SJRA review team on 1/25/13
- **Dannenbaum (C1)** - 90% design drawings and specifications for project Segment C1B were submitted to the SJRA review team on 1/18/13
- **SPI (C2)** - The GRP review team sent comments on 90% design to the consultant on 1/2/13
- **Kimley Horn (C3)** - 100% design drawings and specifications submitted to the SJRA review team on 1/18/13
- **Lockwood, Andrews & Newnam (W1)** - LAN has continued working on their final design. They are addressing 90% review comments for Segments W1A and W1B and have completed their work on the easements within the The Woodlands ROW.
- **Pirnie/ARCADIS (Water Receiving Facilities)** - A 90% project review comment workshop was conducted on 1/9/13.

As final design continues and milestone submittals are received, the GRP Program Team will review and provide comments as applicable to each submittal. The review will be based on submittal compliance with the GRP Program's Design Standards and Criteria Manual, completeness per Program Management Plan (PMP) Section 14.0 – Quality Management and Section 21.0 – Design Management, and general project understanding.

5.2 Pre-Construction

Constructability reviews by the CM&I consultant and GRP Program Transmission System Construction Manager continued this month on milestone drawings submittals for the surface water transmission system. Review is underway on the 100% drawings for Segments T3 and W1A.

5.3 Construction

Quality assurance efforts by the SJRA Construction Inspectors as well as the SWF CA&I consultant continued this month with the continuation of SWF construction, primarily for the RWI, HSPS and GSTs. Efforts included regular visits to the project site to monitor and document observed progress and confirm compliance with the construction contract. Similar quality assurance efforts by the SJRA Construction Inspectors and CM&I consultant for the SWRF and surface water transmission system will commence with the beginning of construction on those respective projects.





6.0 EXHIBITS

Exhibit 1 - GRP Program Schedule

Exhibit 2 - Selected GRP Program Contracts

Exhibit 3 - Monthly GRP Program Financing Report

Exhibit 4 - GRP Unaudited Schedule of Revenues & Expenses - Actual & Budget and Clarification of Actual & Budget Variances

Exhibit 5A - GRP Program Capital Improvements Program Estimate-to-Complete

Exhibit 5B - GRP Program Fund Data

Exhibit 6 - Funding Source Summary

Exhibit 7 - GRP Monthly Forecasted Expenditures for Contracted Services

Exhibit 8 - Estimate at Completion (EAC) for Current Authorizations

Exhibit 9 - Land Acquisition Summary

Exhibit 10 - GRP Program Monthly Meeting Log

Exhibit 11 - Construction Photos

Exhibit 1 - GRP Program Schedule

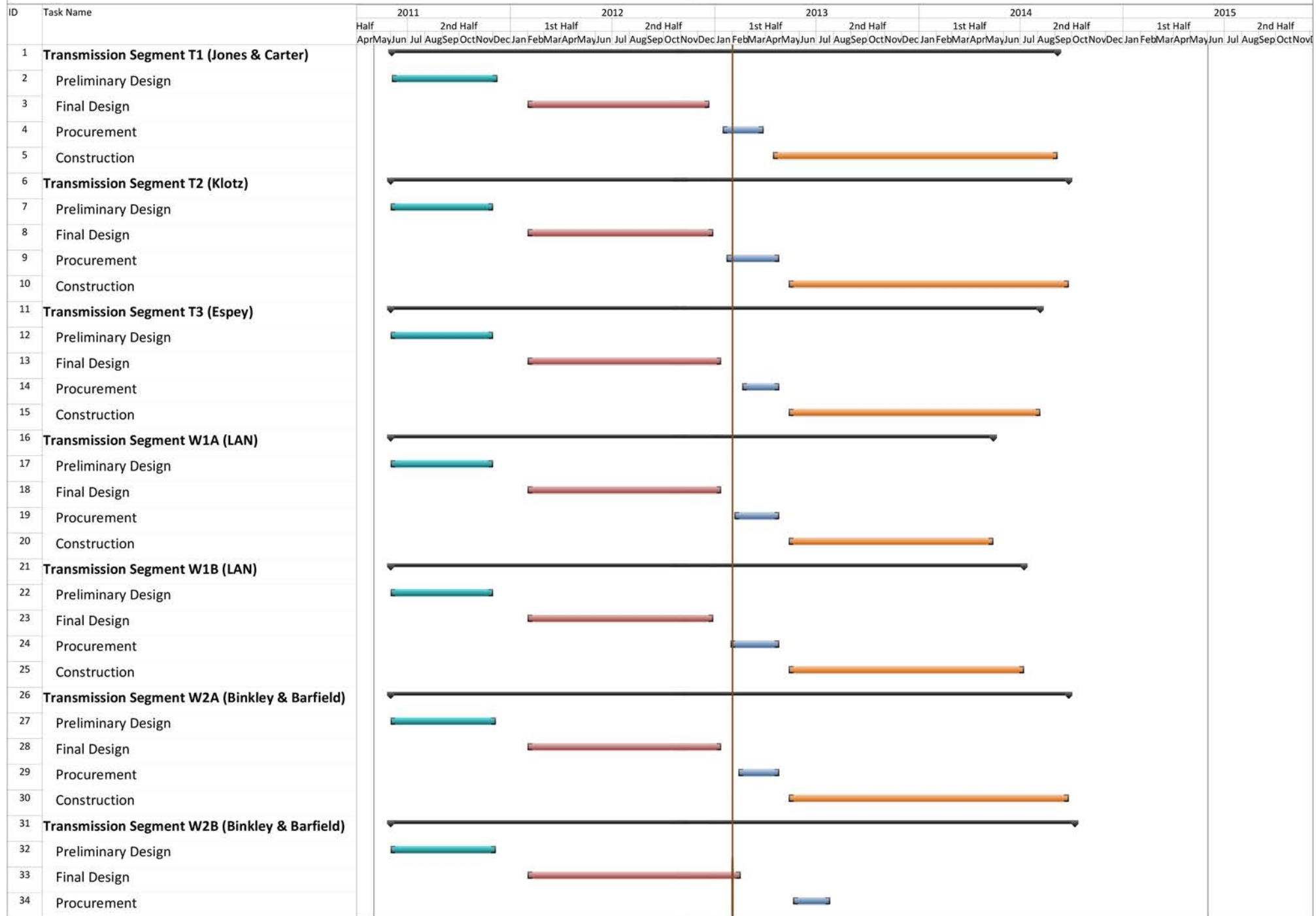


Exhibit 1 - GRP Program Schedule

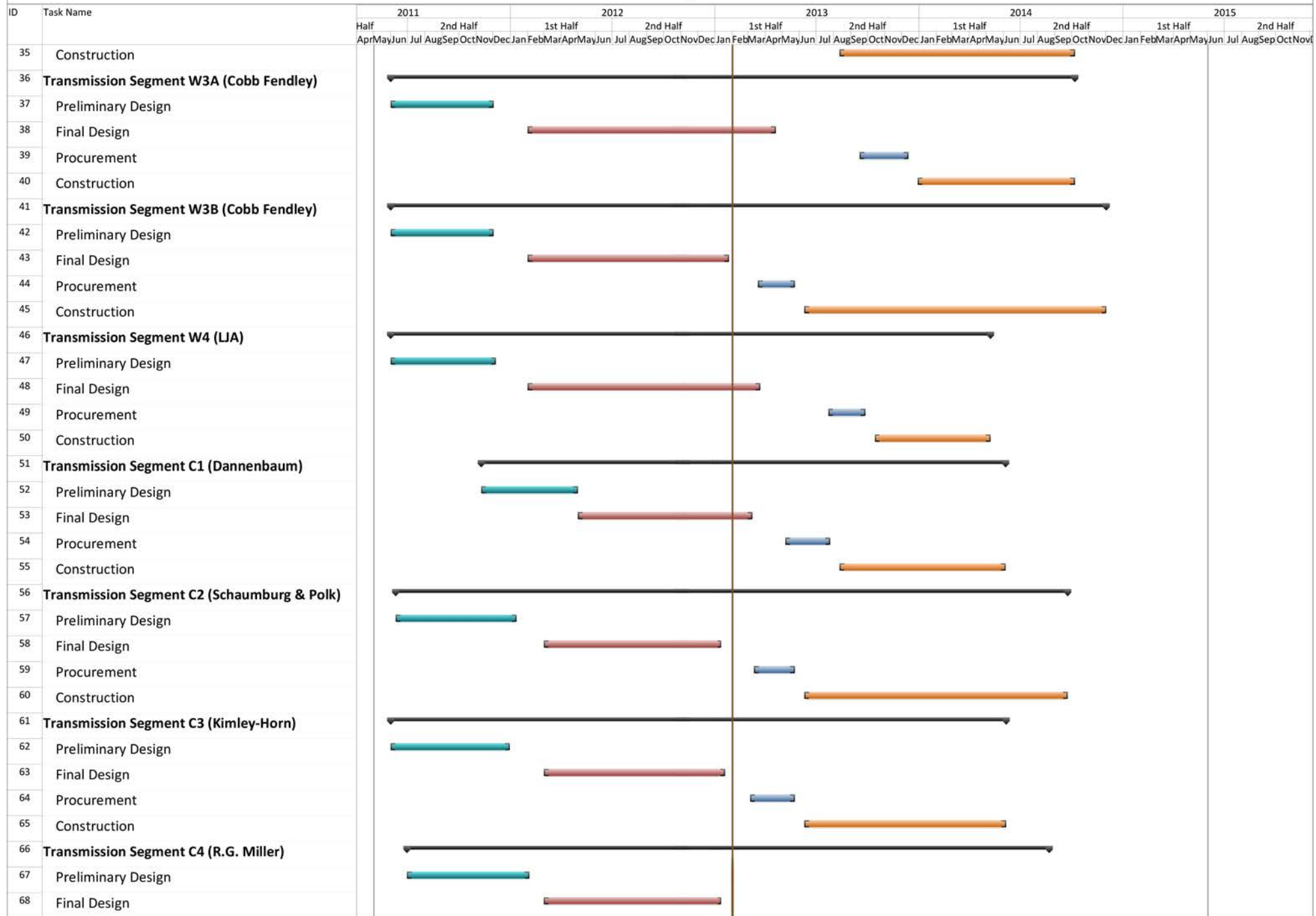


Exhibit 1 - GRP Program Schedule

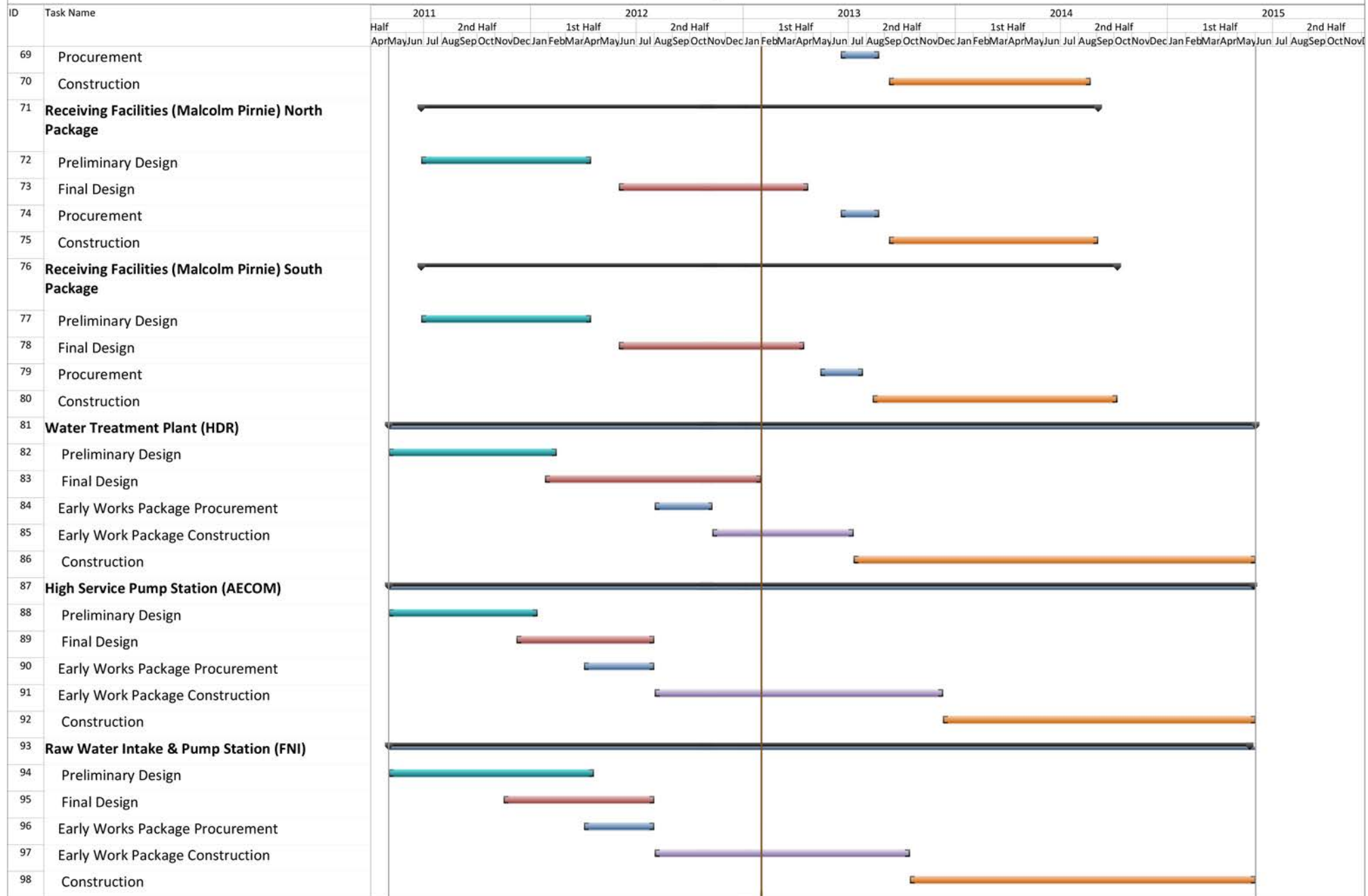




Exhibit 2 Selected GRP Program Contracts January 2013

GRP Program Projects - Design										
Engineering Consultant	Project Name	PER Fee	Percent Complete	Metes & Bounds Fee	Percent Complete	Final Design Fee	Percent Complete	CPS Fee	Percent Complete	Engineer's Construction Cost Estimate
Jones & Carter	Transmission Segment T1	\$ 923,031	100%	*		\$ 975,317	98%			\$ 18,848,060
Klotz	Transmission Segment T2	\$ 623,565	100%	\$ 170,848	100%	\$ 843,531	90%			\$ 19,331,221
Espey	Transmission Segment T3	\$ 553,123	100%	\$ 146,847	100%	\$ 855,184	98%			\$ 17,338,095
Lockwood, Andrews, Newnan	Transmission Segment W1	\$ 920,621	100%	\$ 111,182	100%	\$ 1,086,983	94%			\$ 20,260,700
Binkley & Barfield, Inc.	Transmission Segment W2	\$ 956,154	100%	\$ 31,977	71%	\$ 1,580,296	86%			\$ 25,416,084
Cobb Fendley	Transmission Segment W3	\$ 1,161,967	100%	\$ 535,228	90%	\$ 1,609,338	95%			\$ 19,060,670
LJA	Transmission Segment W4	\$ 364,730	100%	\$ 32,482	0%	\$ 528,856	75%			\$ 6,412,252
Dannenbaum	Transmission Segment C1	\$ 332,300	100%	\$ 38,034	90%	\$ 490,523	90%			\$ 7,097,231
Schaumburg & Polk	Transmission Segment C2	\$ 1,003,246	100%	\$ 309,980	100%	\$ 685,068	95%			\$ 11,273,895
Kimley-Horn	Transmission Segment C3	\$ 490,286	100%	\$ 159,740	100%	\$ 616,103	90%			\$ 7,582,514
R.G. Miller	Transmission Segment C4	\$ 217,507	100%	\$ 18,016	100%	\$ 281,449	80%			\$ 4,040,652
Malcolm Pirnie	Receiving Facilities	\$ 598,651	100%	*		\$ 1,209,451	70%			\$ 13,759,750

*Metes and bounds efforts are included in the final design survey work order.



Exhibit 2 Selected GRP Program Contracts January 2013

GRP Program Projects - Design										
Engineering Consultant	Project Name	PER Fee	Percent Complete	Metes & Bounds Fee	Percent Complete	Final Design Fee	Percent Complete	CPS Fee	Percent Complete	Engineer's Construction Cost Estimate
HDR, Inc.	Water Treatment Plant	\$ 3,079,273	100%			\$ 7,694,130	90%	\$ 2,914,770.00	0.3%	\$ 135,000,000
AECOM, Inc.	High Service Pump Station	\$ 1,072,948	100%			\$ 3,044,066	100%	\$ 940,719.00	15%	\$ 39,960,000
Freese and Nichols, Inc.	Raw Water Intake and Pump Station	\$ 1,138,540	100%			\$ 1,523,752	100%	\$ 969,860.00	20%	\$ 21,000,000
ACES	Access Rd. & San. Swr. Relocation; Temp. SWF Access Rd.					\$ 435,000	100%	\$ 50,000.00	58%	\$ 577,000; \$ 1,500,000
EMA, Inc.	Fiber Optic System	\$ 161,390	100%			\$ 279,899	75%			\$ 5,364,000
TOTALS		\$ 13,597,332	-	\$ 1,554,334	-	\$ 23,738,946	-	\$ 4,875,349	-	\$ 373,822,125



Exhibit 2 Selected GRP Program Contracts January 2013

GRP Program Consultant Contracts			
Engineering Consultant	Program Consultant Service	Total Fee of Work Orders	Percent Complete
Brown & Gay Engineers	Program Management	\$ 9,056,918	88%
Raba Kistner	Geotechnical	\$ 145,260	50%
LandTech	Survey	\$ 514,524	89%
Halff	Environmental	\$ 569,919	100%
Property Acquisition Services	Land Acquisition	\$ 1,413,335	48%
V&A	Cathodic Protection	\$ 511,978	56%
KDM	Land Acquisition	\$ 401,593	52%
Andrews Kurth	Legal	\$ 1,800,000	84%
Mike Bellar	Legal	\$ 100,000	35%
Brown & Caldwell	CMAR Contract Development Assistance	\$ 78,202	100%
Greenburg Traurig	Legal	\$ 200,000	48%
AECOM	Transient	\$ 311,400	89%
KBR	CM&I	\$ 533,433	84%
CDM	CA&I	\$ 5,348,633	5%
Total		\$ 15,636,561	



Exhibit 2 Selected GRP Program Contracts January 2013

GRP Program Projects - Construction			
Construction Project	Construction Contractor	Contract Amount	Percent Complete
GRP Building No. 1	Brookstone	\$ 2,008,673	100%
GRP Temporary Access Road	Lindsey Construction	\$ 977,584	100%
Aqua Texas Sanitary Sewer and Road Relocation	Randy Roan	\$ 525,756	100%
GRP Building No. 1 Fiber Line	Preferred Technologies	\$ 231,158	100%
McCarthy	CMAR	\$ 90,331,558	32%
CMT Early Work Package #2	Geotest	\$ 740,985	14%
Total		\$ 94,815,713	



Exhibit 3
Monthly GRP Program Financing Report
Fiscal Year 2012
 Through January 31, 2012

	WIF Funds	2011 Special Projects Revenue Bonds	TWDB 2011 'D' Fund	2012 Special Projects Revenue Bonds	2012a Special Projects Revenue Bonds	Totals
A. Program Budget						
Bond Issue Amount	\$ 21,500,000.00	\$ 83,430,358.49	\$ 67,470,000.00	\$ 175,000,000.00	\$ 165,000,000.00	\$ 512,400,358.49
Total Investment	\$ 21,500,000.00	\$ 83,430,358.49	\$ 67,470,000.00	\$ 175,000,000.00	\$ 165,000,000.00	\$ 512,400,358.49
B. Contracted Costs						
Contracts Completed	\$ 14,833,881.40	\$ 11,246,824.32	\$ -	\$ -	\$ -	\$ 26,080,705.72
Current Contract Values	\$ 6,177,260.44	\$ 39,171,522.90	\$ 31,887,389.36	\$ 79,984,765.00	\$ -	\$ 157,220,937.70
Change Orders	\$ -	\$ 950,597.03	\$ 159,060.00	\$ -	\$ -	\$ 1,109,657.03
Project Close Out	\$ (197,419.18)	\$ (353,853.09)	\$ -	\$ -	\$ -	\$ (551,272.27)
Total	\$ 20,813,722.66	\$ 51,015,091.16	\$ 32,046,449.36	\$ 79,984,765.00	\$ -	\$ 183,860,028.18
C. Expenditures						
Paid Previous Fiscal Years	\$ 19,966,012.81	\$ 24,949,084.37	\$ 478,705.50	\$ -	\$ -	\$ 45,393,802.68
Paid Current Fiscal Year	\$ 227,083.07	\$ 11,067,893.78	\$ 5,316,936.35	\$ 9,649,324.17	\$ -	\$ 26,261,237.37
Issuance Costs	\$ 470,337.08	\$ 2,049,764.39	\$ 751,195.33	\$ 971,769.13	\$ 952,269.99	\$ 5,195,335.92
Capitalized Interest	\$ -	\$ 7,858,241.52	\$ 5,166,233.00	\$ 12,869,175.00	\$ 30,639,669.00	\$ 56,533,318.52
Total	\$ 20,663,432.96	\$ 45,924,984.06	\$ 11,713,070.18	\$ 23,490,268.30	\$ 31,591,938.99	\$ 133,383,694.49
D. Remaining						
Uncontracted Funds	\$ 215,940.26	\$ 22,507,261.42	\$ 29,506,122.31	\$ 81,174,290.87	\$ 133,408,061.01	\$ 266,811,675.87
Fund Balance *	\$ 836,567.04	\$ 37,505,374.43	\$ 55,756,929.82	\$ 151,509,731.70	\$ 133,408,061.01	\$ 379,016,664.00

Exhibit 4

San Jacinto River Authority Groundwater Reduction Plan Schedule of Revenues & Expenses - Actual & Budget For the Five Months Ending January 31, 2013

	January			Year To Date			
	Actual	Budget	Variance	Actual	Budget	Variance	% Variance
OPERATING REVENUES							
Water sales							
GRP pumping fees	\$ 1,176,437	\$ 1,104,664	\$ 71,773	\$ 8,724,578	\$ 7,942,399	\$ 782,179	10%
TOTAL OPERATING REVENUES	\$ 1,176,437	\$ 1,104,664	\$ 71,773	\$ 8,724,578	\$ 7,942,399	\$ 782,179	10%
OPERATING EXPENSES							
Payroll & employee benefit expenses	\$ 455,824	\$ 337,013	\$ (118,811)	\$ 1,175,126	\$ 1,685,063	\$ 509,937	30%
Professional fees	24,850	22,667	(2,183)	69,245	167,335	98,090	59%
Purchased & contracted services	8,854	19,729	10,875	29,765	98,646	68,881	70%
Supplies, materials & utilities	1,943,840	1,966,646	22,806	2,044,785	2,366,380	321,595	14%
Maintenance repairs, parts & rentals	1,095	1,280	185	8,786	6,400	(2,386)	(37%)
General & administration	57,114	93,693	36,579	259,479	468,466	208,987	45%
TOTAL OPERATING EXPENSES	\$ 2,491,578	\$ 2,441,028	\$ (50,550)	\$ 3,587,187	\$ 4,792,290	\$ 1,205,103	25%
NON-OPERATING REVENUES & EXPENSES							
Interest on investments	\$ 160,005	\$ 198,704	\$ (38,699)	\$ 347,159	\$ 982,020	\$ (634,861)	(65%)
Other revenues	-	-	-	1,430	-	1,430	100%
Depreciation	(20,552)	-	(20,552)	(103,080)	-	(103,080)	100%
Interest expense	(1,661,355)	(1,501,709)	(159,646)	(6,115,270)	(5,831,404)	(283,866)	5%
Amortized debt issuance expense	(14,142)	-	(14,142)	(70,709)	-	(70,709)	100%
TOTAL NON-OPERATING	\$ (1,536,044)	\$ (1,303,005)	\$ (233,039)	\$ (5,940,470)	\$ (4,849,384)	\$ (1,091,086)	22%
NET INCOME (LOSS)	\$ (2,851,185)	\$ (2,639,370)	\$ (211,816)	\$ (803,078)	\$ (1,699,274)	\$ 896,196	(53%)

Exhibit 4 (con't)
GRP Division
Clarification of Actual & Budget Variances
(in thousands)

Category	Driver	September 2012	October 2012	November 2012	December 2012	January 2013	FYTD 2012
GRP Pumping Fees	Usage variance due to weather conditions.	1,666	(609)	(398)	51	72	782
Payroll and related expenses	Budgeted positions not filled per schedule.	172	162	156	139	(119)	510
Professional Fees	Professional fees less than budgeted.	9	17	60	15	(2)	98
Purchased & Contracted Services	Purchased and contracted services less than budgeted.	13	17	13	15	11	69
Supplies, Materials, Utilities, Maintenance, Repairs, Parts & Rentals	Additional Water Supply, costs not yet realized.	300	-	-	-	-	300
	Reservation Fees 2012 true-up	-	-	-	-	33	33
	Travel, fuel, office supplies, phones, utilities, and misc. expenses more than budgeted.	(2)	7	(7)	(2)	(10)	(13)
General & Administration	Allocated labor and related expenses less than budgeted, anticipated a quicker rate of growth than has been actualized.	43	51	40	39	37	209
Non-Operating	Interest/Investment Income	(184)	(194)	(157)	(60)	(39)	(633)
	Depreciation expense	(20)	(21)	(21)	(21)	(21)	(103)
	Bond Issuance Cost Amort expense	(14)	(14)	(14)	(14)	(14)	(71)
	Bond interest expense	(168)	(199)	10	233	(160)	(284)
		1,814	(784)	(318)	396	(212)	896

Exhibit 5A

GRP Program Capital Improvements Program Estimate-At-Completion

SERVICES	ESTIMATE-AT-COMPLETION
Pre-Engineering Phase Services	\$ 4,676,398
(GRP Development, Environmental Studies, Pilot Plant, Surface Water Treatment Plant Site Survey)	
Engineering Phase Services	\$ 42,391,190
(Planning, Preliminary Engineering, Final Engineering, Geotechnical, Survey, Metes & Bounds, Subsurface Utility Investigation, Environmental)	
Construction Phase Services	\$ 36,694,287
(Early Equipment Procurement, Engineering Services During Construction, Construction Management & Inspection [Transmission System], Construction Administration & Inspection [SWF], Material Testing)	
Construction	\$ 391,957,156
(Surface Water Transmission System, Raw Water Intake and Pump Station, Surface Water Treatment Plant, High Service Pump Station and Ground Storage Tanks, Surfacewater Receiving Facilities, Infrastructure, Buildings, Roadways, Site Security, Access Roadways)	
Transmission Segment C1 - Construction	\$ 7,097,231
Transmission Segment C2 - Construction	\$ 11,273,895
Transmission Segment C3 - Construction	\$ 7,582,514
Transmission Segment C4 - Construction	\$ 4,040,652
Transmission Segment T1 - Construction	\$ 18,848,060
Transmission Segment T2 - Construction	\$ 19,331,221
Transmission Segment T3 - Construction	\$ 17,338,095
Transmission Segment W1 - Construction	\$ 20,260,700
Transmission Segment W2 - Construction	\$ 25,416,084
Transmission Segment W3 - Construction	\$ 19,060,670
Transmission Segment W4 - Construction	\$ 6,412,252
Receiving Facilities - Construction	\$ 17,107,925
SWF Work Package No. 2	\$ 32,528,047
SWF Work Package No. 3	\$ 47,456,718
SWF Work Package No. 4 (GMP)	\$ 100,668,442
Transmission System Fiber Optic - Construction	\$ 5,364,000
Permanent Access Roadway Construction	\$ 8,000,000
Building No. 1; Access Road; Vegetative Buffer; Construction Materials Testing; SWF Site Vegetation Management; Sanitary Sewer/Access Rd. Relocation ⁽¹⁾	\$ 4,328,249
Other Offsite Construction (Stand Pipe, Transmission Line Utility Relocations, Receiving Facility Improvements) ⁽¹⁾	\$ 19,491,769
Non-Project Specific Contingency	\$ 350,631
Program Management	\$ 12,528,536
(GRP Program Management, Survey, Geotechnical, Transient, Corrosion, Legal Consultants)	
Land Acquisition	\$ 11,378,302
(Legal, Appraisal, Title Research, Land Acquisition Consultants) ⁽²⁾	
Total:	\$ 499,625,868

Bond issuance costs are not included.

⁽¹⁾ Costs other than transmission and surface water facilities now separated into two categories

⁽²⁾ Includes revisions to land acquisition cost estimates and recategorizing of contingency.



Exhibit 5B GRP Program Fund Data February 11, 2013

Funding Source	Amount Authorized by Board To-Date	Interest Rate	Bond Costs	Capitalized Interest	Debt Service Reserve Fund	Amount Currently Available	Pending Funding Source	Invoiced To-Date	Remaining Amount
WIF Bond Issue	\$ 21,500,000.00	.854% - 2.706%	\$ 470,337.08	\$ -	\$ -	\$ 21,029,662.92		\$ 20,263,898.72	\$ 765,764.20
Open Market Bond Issue	\$ 83,430,358.49	3% - 5.25%	\$ 2,049,764.39	\$ 7,858,241.52	\$ -	\$ 73,522,352.58		\$ 35,763,988.14	\$ 37,758,364.44
TWDB Dfund Series 2011A	\$ 67,470,000.00	1.22% - 4.97%	\$ 751,195.33	\$ 5,166,233.00	\$ 3,859,151.00	\$ 57,693,420.67		\$ 6,538,434.81	\$ 57,693,420.67
TWDB Dfund Series 2012	\$ 175,000,000.00	1.17% - 4.62%	\$ 971,769.13	\$ 12,869,175.00	\$ -	\$ 161,159,055.87		\$ 9,587,316.17	\$ 161,159,055.87
TWDB Dfund Series 2012A	\$ 165,000,000.00	1.26% - 4.62%	\$ 952,269.99	\$ 14,139,669.00	\$ 16,500,000.00	\$ 133,408,061.01		\$ -	\$ 133,408,061.01
Future Series 2013 (Est.)	\$ 62,085,000.00	4.00%	\$ 739,925.00	\$ 4,966,800.00	\$ 3,564,960.00	\$ -	\$ 52,813,315.00	\$ -	\$ 52,813,315.00
Totals	\$ 574,485,358.49		\$ 5,935,260.92	\$ 45,000,118.52	\$ 23,924,111.00	\$ 446,812,553.05	\$ 52,813,315.00	\$ 72,153,637.84	\$ 443,597,981.19

Notes:

1. These value do not include investment income.
2. Green items are estimates only.
3. Series 2011 bond costs include \$681,132.45 for bond insurance and \$459,709.50 for underwriter's discount.



Exhibit 6 Funding Source Summary February 11, 2013

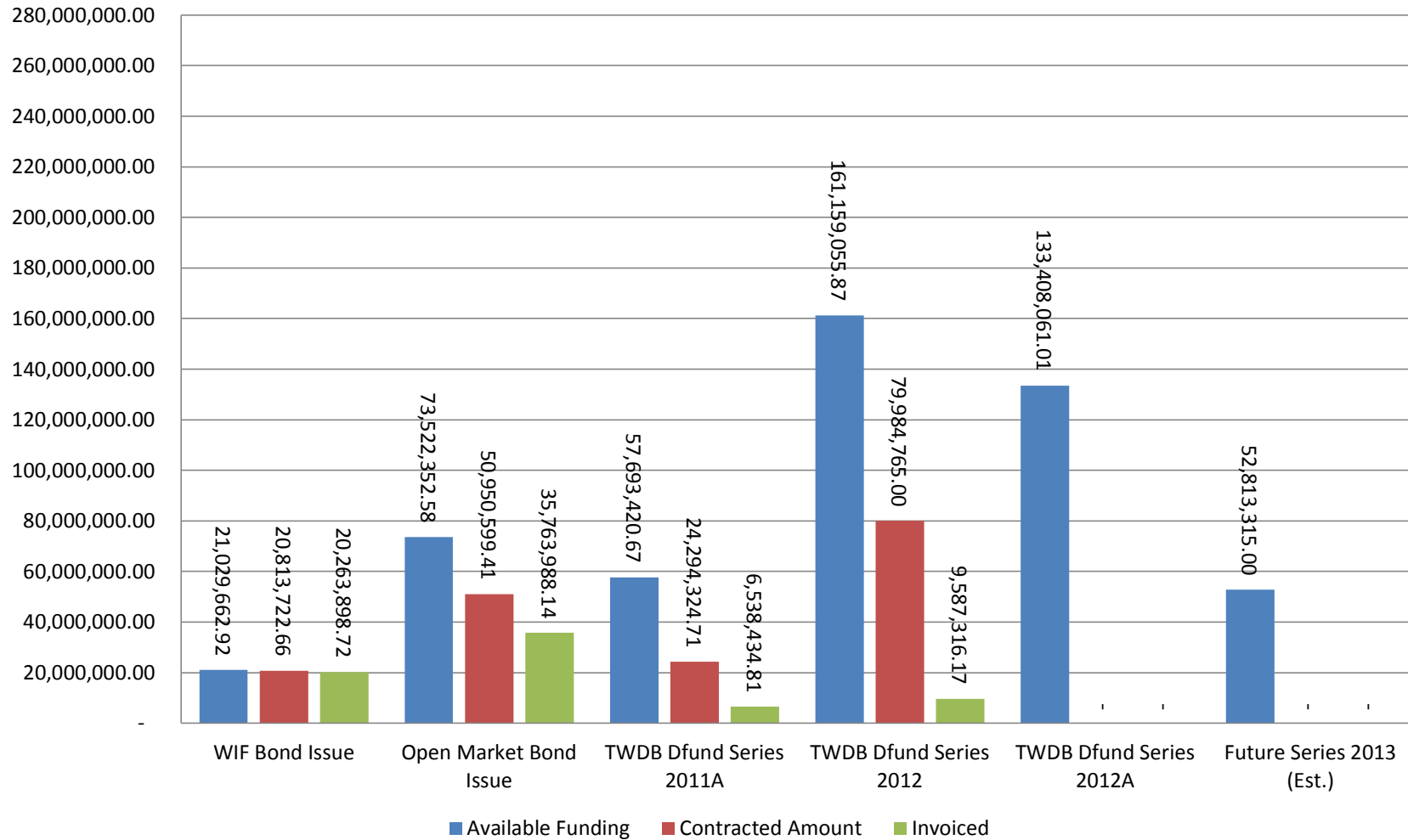




Exhibit 7 GRP Program Monthly Forecasted Expenditures for Contracted Services February 11, 2013

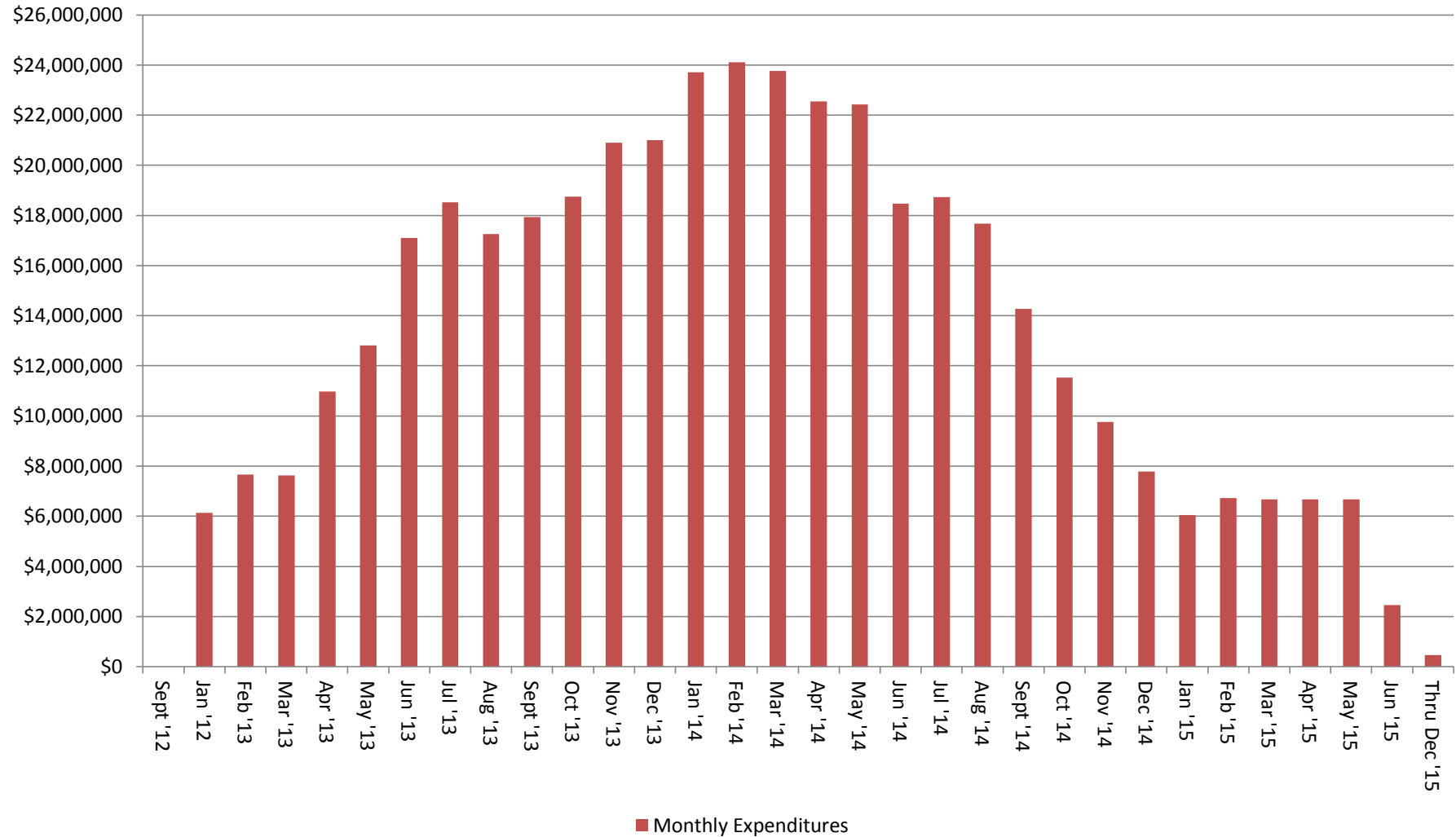




Exhibit 8

Estimate at Completion (EAC) for Current Authorizations

January 31, 2013

Surface Water Transmission System

Project	Firm	Amount Authorized by Board	Board Authorized Modifications		Forecasted Modification Amount	Estimate at Completion (EAC)
			Dollars	%		
T1	Jones & Carter	\$ 1,804,848.00	\$ 93,500.00	5.2%		\$ 1,898,348.00
T2	Klotz	\$ 1,637,943.55		0.0%		\$ 1,637,943.55
T3	Espey	\$ 1,555,154.42		0.0%		\$ 1,555,154.42
W1	LAN	\$ 2,118,785.75		0.0%		\$ 2,118,785.75
W2	Binkley & Barfield	\$ 2,568,427.19		0.0%		\$ 2,568,427.19
W3	Cobb Fendley	\$ 3,306,532.50		0.0%		\$ 3,306,532.50
W4	LJA	\$ 876,011.82	\$ 17,574.56	2.0%		\$ 893,586.38
C1	Dannenbaum	\$ 822,823.00		0.0%		\$ 822,823.00
C2	Schaumburg & Polk	\$ 1,583,197.99	\$ 207,547.98	13.1%		\$ 1,790,745.97
C3	Kimley-Horn	\$ 1,202,256.89	\$ 31,936.55	2.7%		\$ 1,234,193.44
C4	R.G. Miller	\$ 526,737.05		0.0%		\$ 526,737.05
WRFs	Malcolm Pirnie/Arcadis	\$ 1,808,102.00		0.0%		\$ 1,808,102.00
CM&I	KBR	\$ 533,432.62		0.0%		\$ 533,432.62
Subtotal - Surface Water Transmission System		\$ 20,344,252.78	\$ 350,559.09	1.7%	\$ -	\$ 20,694,811.87

Surface Water Facilities

Project	Firm	Amount Authorized by Board	Board Authorized Modifications		Forecasted Modification Amount	Estimate at Completion (EAC)
			Dollars	%		
WTP	HDR	\$ 17,164,257.21	\$ 533,488.00	3.1%		\$ 17,697,745.21
HSPS	AECOM	\$ 4,324,402.56		0.0%		\$ 4,324,402.56
StandPipe	AECOM	\$ 192,281.00		0.0%		\$ 192,281.00
RWI&PS	Freese and Nichols	\$ 3,901,773.35		0.0%		\$ 3,901,773.35
CMAR	McCarthy	\$ 90,331,558.00		0.0%		\$ 90,331,558.00
CA&I	CDM	\$ 5,348,633.00		0.0%		\$ 5,348,633.00
Subtotal - Surface Water Facilities		\$ 121,262,905.12	\$ 533,488.00	0.4%	\$ -	\$ 121,796,393.12



Exhibit 8

Estimate at Completion (EAC) for Current Authorizations

January 31, 2013

Program Consultant Services & Other Projects

Project	Firm	Amount Authorized by Board	Board Authorized Modifications		Forecasted Modification Amount	Estimate at Completion (EAC)
			Dollars	%		
Prog Mgmt	Brown & Gay	\$ 9,056,918.06		0.0%		\$ 9,056,918.06
Prog Survey	Landtech	\$ 514,524.00		0.0%		\$ 514,524.00
Prog Geo	Raba Kistner	\$ 145,260.00		0.0%		\$ 145,260.00
Prog Tran	AECOM	\$ 161,400.00	\$ 150,000.00	92.9%		\$ 311,400.00
Access Rd	ACES	\$ 434,972.13		0.0%		\$ 434,972.13
Access Rd	S&V Survey	\$ 66,875.00		0.0%		\$ 66,875.00
Land Acq	KDM	\$ 359,887.70	\$ 41,705.00	11.6%		\$ 401,592.70
Land Acq	PAS	\$ 1,413,334.88		0.0%		\$ 1,413,334.88
Prog Env	Halff	\$ 526,862.58	\$ 43,056.29	8.2%		\$ 569,918.87
Prog Fiber	EMA	\$ 441,289.00		0.0%		\$ 441,289.00
Prog Corr	V&A	\$ 866,676.00		0.0%		\$ 866,676.00
Prog Svcs & Projs	Other Program Services & Projects	\$ 3,687,354.94		0.0%		\$ 3,687,354.94
Subtotal - Program Consultant Services & Other Projects		\$ 17,675,354.29	\$ 234,761.29	1.3%	\$ -	\$ 17,910,115.58

Construction Contracts

Project	Firm	Amount Authorized by Board	Board Authorized Modifications		Forecasted Modification Amount	Estimate at Completion (EAC)
			Dollars	%		
GRP Bldg #1	Brookstone	\$ 2,009,900.00	\$ (1,227.00)	-0.1%		\$ 2,008,673.00
Bldg #1 CMT	Aviles	\$ 48,193.60		0.0%		\$ 48,193.60
Landscape Buffer	KeyScape	\$ 87,255.00		0.0%		\$ 87,255.00
Temp Access Road	Lindsey Construction	\$ 986,431.00	\$ (8,847.15)	-0.9%		\$ 977,583.85
Access Road CMT	Terracon Consultants	\$ 12,842.50		0.0%		\$ 12,842.50
Aqua Texas Sewer	Randy Roan	\$ 516,650.50	\$ 9,106.17	1.8%		\$ 525,756.67
Aqua Texas CMT	Aviles	\$ 31,057.20		0.0%		\$ 31,057.20
Bldg #1 Fiber Line	Preferred Technologies	\$ 257,339.65	\$ (26,182.09)	-10.2%		\$ 231,157.56
SWF EWP2 CMT	Geotest	\$ 1,346,397.00		0.0%		\$ 1,346,397.00
Other	Other Construction Contracts	\$ 483,263.32		0.0%		\$ 483,263.32
Subtotal - Construction Contracts		\$ 5,779,329.77	\$ (27,150.07)	-0.5%	\$ -	\$ 5,752,179.70

Totals

	Amount Authorized by Board	Board Authorized Modifications		Forecasted Modification Amount	Estimate at Completion (EAC)
		Dollars	%		
Subtotal - Surface Water Transmission System	\$ 20,344,252.78	\$ 350,559.09	1.7%	\$ -	\$ 20,694,811.87
Subtotal - Surface Water Facilities	\$ 121,262,905.12	\$ 533,488.00	0.4%	\$ -	\$ 121,796,393.12
Subtotal - Program Consultant Services & Other Projects	\$ 17,675,354.29	\$ 234,761.29	1.3%	\$ -	\$ 17,910,115.58
Subtotal - Construction Contracts	\$ 5,779,329.77	\$ (27,150.07)	-0.5%	\$ -	\$ 5,752,179.70
Total	\$ 165,061,841.96	\$ 1,091,658.31	0.7%	\$ -	\$ 166,153,500.27



Exhibit 9 Land Acquisition Summary January 2013

Project	Anticipated Number of Easements to Acquire	Easements Acquired This Month	Easements Acquired Total
Transmission System Segment T1	62	6	43
Transmission System Segment T2	2	0	0
Transmission System Segment T3	22	0	1
Transmission System Segment C1	16	1	6
Transmission System Segment C2	77	2	2
Transmission System Segment C3	32	0	13
Transmission System Segment C4	4	0	0
Transmission System Segment W1	32	3	13
Transmission System Segment W2	8	0	0
Transmission System Segment W3	178	2	55
Transmission System Segment W4	7	0	0
Totals:	440	14	133



Exhibit 10

GRP Program Monthly Meeting Log

January 2013

Meeting	Agenda	Location	Date	Participants
GRP Review Committee		G&A Office	1/22/2013	Review Committee, GRP Program Team, general public
SJRA Board of Directors		G&A Office	1/24/2013	SJRA Board of Directors, GRP Program Team staff, general public
Monthly Progress Meetings	T1	GRP Building 1	1/29/2013	T1 Consulting Team, GRP Program Team
Monthly Progress Meetings	C1	GRP Building 1	1/23/2013	C1 Consulting Team, GRP Program Team
Monthly Progress Meetings	C2	GRP Building 1	1/8/2013	C2 Consulting Team, GRP Program Team
Monthly Progress Meetings	C3	GRP Building 1	1/8/2013	C3 Consulting Team, GRP Program Team
Monthly Progress Meetings	C4	GRP Building 1	1/4/2013	RGME, BGE, and KBR
Monthly Progress Meetings	W2	GRP Building 1	1/9/2013	BBI, BGE, and KBR
Monthly Progress Meetings	W3	GRP Building 1	11/13/2012	Cobb Fendley, SJRA, KBR, BGE
Monthly Progress Meetings	Water Receiving Facilities	GRP Building 1	11/14/2012 12/12/2012	WRF Consulting Team, GRP Program Team
CDM Smith	Construction Administration and Inspection	GRP Building 1	Weekly	SJRA, McCarthy, CDM Smith, Geotest
Standpipe	Progress	GRP Building 1	1/28/2013	AECOM, BGE, SJRA
RWI	Construction Progress	GRP Building 1	1/22/2013	FNI, BGE, SJRA
Land Acquisition Conference Calls			Weekly	Andrews Kurth, SJRA
HSPS	Construction Progress	GRP Building 1	1/22/2013	AECOM, BGE, SJRA



Exhibit 10

GRP Program Monthly Meeting Log

January 2013

Meeting	Agenda	Location	Date	Participants
WTP	Construction Progress	GRP Building 1	1/22/2013	HDR, BGE, SJRA
Fiber	Progress	GRP Building 1	1/10/2013 1/23/2013	EMA, BGE, SCADA
SWF	Project Meeting	GRP Building 1	Weekly	McCarthy, CDM, SJRA
Woodlands Agreement	System Improvements	SJRA Woodlands	1/2/3013	GRP, Woodlands, Tech Services
JPABoard Meeting	GRP Update	JPA Office	1/9/2013	JPA, SJRA
Indian Springs	GRP Update	Township	1/8/2013	Village Association, SJRA
Teasood Property Management	Easements	GRP Building 1	1/17/2013	SJRA, Teaswood, KDM
South Montgomery County Mobility Committee	GRP Update	Clerk's Office	1/15/2013	Mobility Committee, SJRA
Girl Scouts	Easements	Camp Arnold	1/30/2013	San Jacinto Girl Scouts, SJRA, KDM
GRP Monthly Status		Conroe	1/23/2013	
GRP Monthly Status		The Woodlands	1/24/2013	



Exhibit 11 Construction Photos January 2013



First of two 48-inch pipe crossings over Lake Conroe Dam



Dual 48-inch pipe crossing over Lake Conroe Dam



Forming for dual 48-inch pipe encasement



Workers examine pipe installation



Exhibit 11 Construction Photos January 2013



High Service Pump Station – Pipe Discharge Bay



Workers install forms prior to concrete placement



Exhibit 11 Construction Photos January 2013



Drainage culvert installation at main entrance road



Workers check grade of drainage culverts



Excavation for Granular Activated Carbon Facility



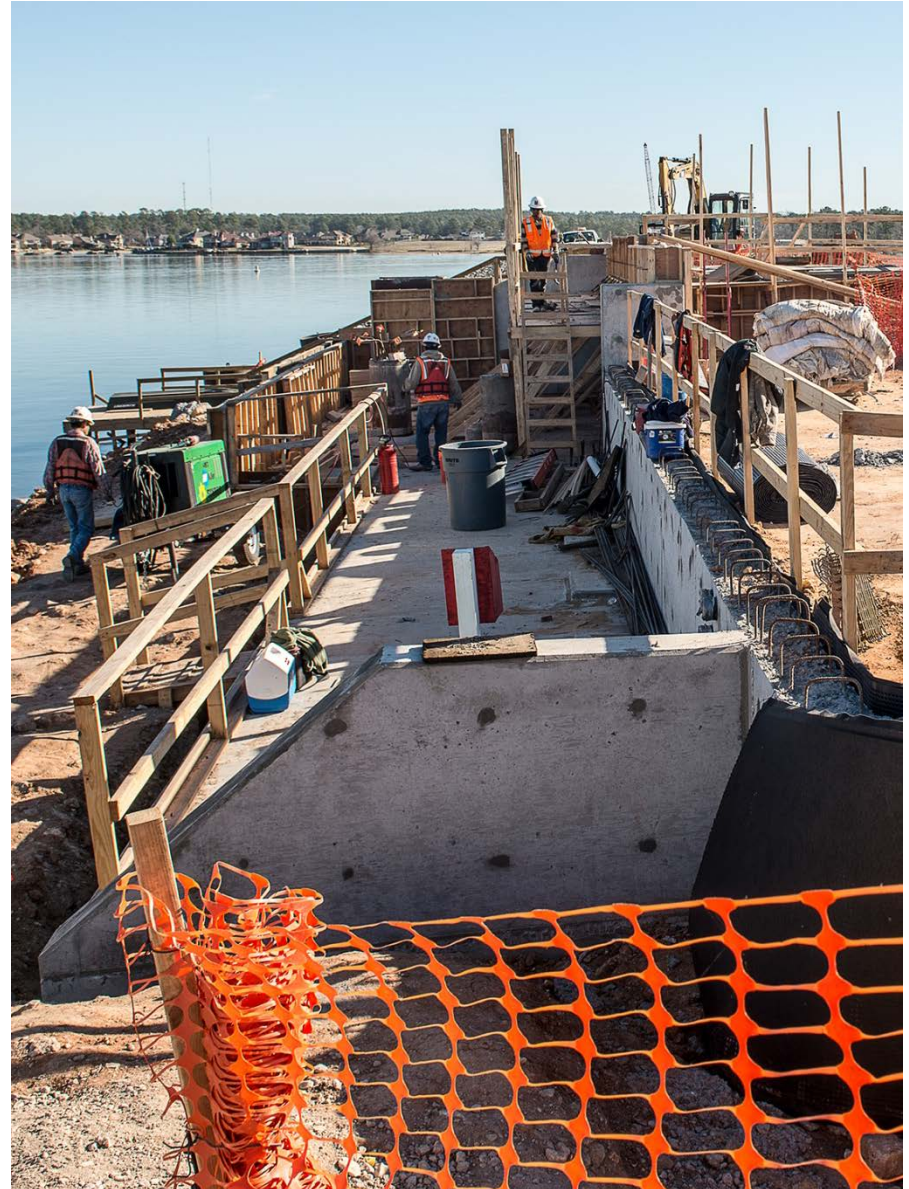
Exhibit 11

Construction Photos

January 2013



Bent caps in place on piers at Raw Water Pump Station



Abutment at Raw Water Pump Station



Raw Water Pump Station construction crane and service boat



Exhibit 11 Construction Photos January 2013



High Service Pump Station pipe discharge bay looking east



High Service Pump Station pipe discharge bay looking west



Excavation at Membrane Facility



Ground Storage Tank site preparation