



Groundwater Reduction Plan Program Monthly Progress Report - February 2012

San Jacinto River Authority

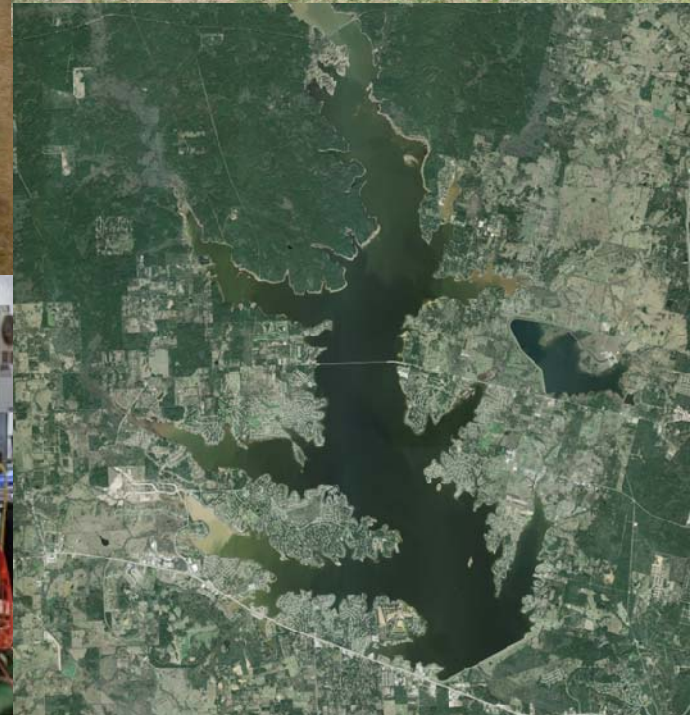




TABLE OF CONTENTS

Table of Contents	i	4.5 Claims	4-2
Acronyms and Definitions	ii	4.6 CIP Cash Flow	4-2
1.0 Planning	1-1	4.7 CIP Budget Estimates at Completion	4-2
1.1 Strategic	1-1	4.8 Land Acquisition	4-2
1.2 Engineering and Construction	1-1	5.0 Quality Assurance	5-1
1.3 Meetings	1-2	6.0 Exhibits	6-1
2.0 Schedule	2-1		
2.1 Engineering	2-1		
2.2 Construction	2-2		
3.0 Procurement	3-1		
3.1 Solicitations	3-1		
3.2 Contract Awards	3-1		
3.3 Process and Procedures	3-1		
3.4 Look Ahead	3-1		
4.0 Cost Report and Financial Considerations	4-1		
4.1 GRP Program and GRP Project CIP Budget(s)	4-1		
4.2 Financial Statement	4-1		
4.3 Invoices/Applications for Payment	4-1		
4.4 Contract Amendments and Change Orders	4-2		



ACRONYMS AND DEFINITIONS

Acronyms

CM&I	Construction Management and Inspection
CMAR	Construction Manager at Risk
CSP	Competitive Sealed Proposal
EA	Environmental Assessment
GRP	Groundwater Reduction Plan
HSPS	High Service Pump Station
LSGCD	Lone Star Groundwater Conservation District
LVGU	Large Volume Groundwater User
PER	Preliminary Engineering Report
RFB / Q / P	Request for Bids / Qualifications / Proposals
RWI	Raw Water Intake & Pump Station
SJRA	San Jacinto River Authority
SOQ	Statement of Qualifications
SWF	Surface Water Facilities (SWTP, HSPS and RWI)
SWTP	Surface Water Treatment Plant
TCEQ	Texas Commission on Environmental Quality
TWDB	Texas Water Development Board
SWRF	Surface Water Receiving Facility
WIF	Water Infrastructure Fund

Definitions

GROUNDWATER REDUCTION PLAN (GRP)	The document developed and filed with the LSGCD indicating SJRA's plan to reduce the permitted 2009 groundwater pumpage of its GRP Participants by 30%. The GRP is administered by the SJRA, including any supplements, revisions, or amendments.
----------------------------------	---

GRP PROGRAM TEAM	SJRA staff, Program Management Consultant (Brown & Gay Engineers, Inc.) staff, and technical consultants working interdependently toward meeting the goals of the Groundwater Reduction Plan.
GRP ADMINISTRATOR	The SJRA General Manager's designee who administers the SJRA Groundwater Reduction Plan and GRP Contract with GRP Participants.
GRP CONTRACT	Contract between the SJRA and a Participant to be included in the SJRA's efforts to meet the surface water conversion requirements mandated by the LSGCD.
JOINT GRP	GRP which is prepared to include (takes into account) LVGUs who have executed a GRP Contract with the SJRA to join the SJRA's GRP. Contracted LVGUs obtain LSGCD groundwater reduction regulation compliance through the SJRA's Joint GRP without preparing and submitting a GRP.
LARGE VOLUME GROUNDWATER USER(S) (LVGU)	Any person or entity that, through a single well or a combination of wells, actually produces or is authorized by permit(s) issued by the LSGCD to produce 10 million gallons or more of groundwater annually on or after January 01, 2008.
PARTICIPANT(S)	Regulated User(s) that enters into and remains subject to a written agreement with the SJRA to be included in the SJRA's GRP and includes the legal successors or assigns of Participant(s).
REGULATED USER(S)	Any public or private entity or person that is or becomes subject to the District Regulatory Plan established by the LSGCD and includes any amendments, revisions or supplements thereto as may be adopted by the LSGCD.
SJRA GRP DIVISION	Division of the SJRA responsible for GRP compliance, and the management, administration, operation and maintenance of the surface water facilities and surface water transmission system.
SJRA EXECUTIVE MANAGEMENT	Includes SJRA's General Manager, Deputy General Manager - Operations and Deputy General Manager - Administration.

1.0 PLANNING

The GRP Program Team meets regularly for the purposes of setting performance expectations and goals of the GRP Program, identifying the efforts required to achieving these objectives, evaluating the effectiveness of such efforts, and modifying those efforts based upon both internal and external performance evaluations.

1.1 Strategic

This month's meetings continued to focus on the development of a construction phase public outreach plan. A **Construction Communications Committee** composed of representatives from the SJRA, GRP Participants, local government, Conroe ISD and other entities impacted by the future GRP Program construction activities is being created to facilitate the development of such a plan. Efforts this month focused on identifying potential committee participants and making contact to request participation.

1.2 Engineering and Construction

Representative planning efforts related to engineering and construction that arose or were further acted upon this month included:

- The GRP Program Team and Transmission System CM&I Consultant continued developing the strategy for **construction packaging and sequencing of the surface water transmission segments and receiving facilities**. Based on the division of the transmission system into fourteen (14) construction packages and the receiving facilities into two (2) packages, the focus this month was on the sequencing of the construction packages. Emphasis was given to staggering similar sized (estimated cost and/or water line size) projects and constructing the more critical projects first (i.e., those with longer estimated construction durations and/or supplying the more critical receiving facilities). The group met February 14 and 29, 2012, and plans to finalize the sequencing strategy for the construction packages in March 2012.
- Construction continued this month on Water Well No. 39 in The Woodlands by the SJRA Woodlands Division. Drilling of the pilot hole into the **Catahoula Aquifer** was completed and electronic logging was performed towards the end of the month. Water samples are anti-

pated to be collected in mid-March 2012 and will be tested to indicate the quality of the groundwater from the aquifer. The testing results are important to the evaluation of the aquifer as a potential alternative water source for the GRP Program.



Water Well No. 39 construction

- The GRP Program Team continued working with AECOM on a scope of work and associated fee for the design of an approximately 100-foot tall, 26-foot diameter **standpipe** to be located along the northern reach of surface water transmission system design segment C-2. The standpipe is necessary to meet Phase I and future transmission system post-transient and pressure control needs. The GRP Program Land Acquisition Consultant is working to secure a site for the proposed standpipe. Once a site is determined, the scope and fee will be finalized in a Work Order for SJRA Board of Directors consideration.
- Over the past few months the GRP Program Team has been working with **Montgomery County WCID No. 1 (WCID 1)** to investigate the immediate and long-term feasibility of constructing the portion of the surface water transmission system **design segment W-3** that would supply surface water to WCID 1. This month it has been determined that serving WCID 1 is not financially feasible in the near term and WCID 1 informed the GRP Program Team that they no longer desire to receive surface water in Phase I of the GRP Program. As a result, the GRP Program Team has removed this particular portion, approximately 16,200 linear feet, from the project.
- Montgomery County MUD No. 99 has inquired about potentially receiving surface water as part of Phase I, but a formal request has not been made and discussions remain preliminary.

1.3 Meetings

1.0 PLANNING (CONTINUED)

The GRP Program Team continued meeting with both internal and external GRP Program stakeholders this month, in addition to its weekly GRP Program and GRP Project status meetings and monthly progress meetings with surface water transmission system and SWF design consultants. A listing of these meetings may be seen in attached Exhibit 10.

Meetings of special note that were led or attended by the GRP Program technical staff this month included the following:

- The GRP Program Team met on February 9, 2012 to further discuss the anticipated **infrastructure improvements** that may be necessary for the **GRP Participants receiving surface water in Phase I** as well as the potential funding sources the GRP Program may use to assist these GRP Participants in designing and/or constructing such improvements. The GRP Division is preparing memoranda to these specific GRP Participants summarizing the GRP Division's current understanding of the necessary improvements and requesting the GRP Participant confirm its understanding. The memoranda are anticipated to be completed and distributed in mid-March 2012. Should the GRP Participants require GRP Program assistance in designing, constructing, and/or funding their necessary infrastructure improvements, each will need to make a formal request to the GRP Division.
- The GRP Program Team presented an overview of the proposed surface water transmission system **"C" design segment alignments** to officials and representatives from area municipalities and entities, and landowners along the proposed alignments on February 10, 2012. The proposed alignments are based on the findings and recommendations from the respective engineering consultants' Preliminary Engineering Reports, completed in December 2011 and January 2012. The meeting gave attendees the opportunity to provide input to be considered by the GRP Program Team and the respective engineering consultants in finalizing the alignments during the final design phase.
- Following January meetings with the other GRP Participants planned to receive surface water in Phase I, the GRP Program Team and Surface Water Receiving Facilities (SWRF) engineering consultant met with representatives from the City of Oak Ridge North on February 15, 2012 to review and discuss the **preliminary design layouts/improvements** to be executed at their facility, including **emergency power requirements**. The SWRF engineering consultant has now met with all of the Phase I SWRF owners/operators and is incorporating the provided input into their final Preliminary Engineering Report.
- The monthly **northern Montgomery County GRP Program technical status meeting** was held on February 22, 2012 at the SJRA's G&A Office. Attendees included Joint GRP Participant representatives from the City of Conroe as well as representatives from Commissioner Doyal's office. Generally, discussion included the following:
 1. Specific issues/comments related to the recommended alignments for the proposed GRP Program surface water transmission system "C" and "T" design segments;
 2. The design and potential location(s) of the standpipe for stabilizing transmission system pressures;
 3. Updates to the anticipated surface water transmission system final design schedule; and
 4. Public relations/public outreach efforts by the GRP Program/GRP Administrator and GRP Program Technical Staff support of such efforts for public meetings held on February 22 and 23, 2012.
- The monthly **southern Montgomery County GRP Program technical status meeting** was held on February 23, 2012 at the SJRA's Woodlands Office. Joint GRP Participant representatives from Southern Montgomery County MUD (SMCMUD) and representatives from The Woodlands Development Corporation were in attendance. Generally, discussion included the following:
 1. Coordination of specific alignment configuration along an alternative route to Oak Ridge North also serving SMCMUD;
 2. Recommended layout of GRP facilities within the proposed surface water receiving facilities;
 3. Public relations/public outreach efforts by the GRP Program/GRP Administrator and GRP Program Technical Staff support of such efforts for public meetings held on February 22 and 23, 2012; and
 4. Overview of recommended transmission system alignments within and adjacent to The Woodlands (the "W" routes).



1.0 PLANNING (CONTINUED)

- Two (2) open-to-the-public informational sessions on the GRP Program and the proposed surface water transmission system were held on February 22 and 23, 2012 at the Lone Star College Conference Center and SJRA G&A Building, respectively. The GRP Administrator provided an overview of the transmission system layout and responded to questions. Attendees included Joint GRP Participant representatives and general public.
- In addition to the monthly GRP Program technical status meetings and the public informational sessions, several other public outreach efforts were conducted this month. The GRP Administrator met with Lake Conroe area realtors (February 14, 2012), the Woodlands Township Board of Directors (February 16, 2012), and Commissioner Chance (February 29, 2012) to brief them on overall GRP Program status and discuss other issues of interest related to the GRP Program.



2.0 SCHEDULE

Currently, the GRP Program remains on schedule for the delivery of treated surface water to select Joint GRP Participants on or before January 1, 2016. A simplified GRP Program schedule may be found in attached Exhibit 1.

2.1 Engineering

Final design Work Orders for ten (10) of the eleven (11) surface water transmission system design segments and all three (3) of the surface water facilities have commenced or been approved by the SJRA Board of Directors. Segment C-1 and the surface water receiving facilities are at different stages of completion of preliminary engineering, and are scheduled to be completed in the next few months.

The status of each GRP Program consultant's Professional Service Agreement (contract) Work Order (phase and percent complete) is indicated in attached Exhibit 2.

Key schedule issues and updates related to GRP Program engineering activities include the following:

- **Final design Work Orders** for design segments **C-2, C-3 and C-4** of the surface water transmission system were presented to the GRP Program Review Committee and SJRA Board of Directors at their February 13 and February 23, 2012 meetings, respectively, and approved by the SJRA Board of Directors. Notice to Proceed was issued this month on final design Work Orders for each of the **"T" and "W" design segments**. Preliminary engineering on the C-1 design segment is anticipated to be completed in May 2012, with final design following thereafter.
- This month saw the conclusion of preliminary design efforts for two of the three **Surface Water Facilities (SWF)** as well as the beginning or continuation of final design efforts on all three SWF. Progress is further detailed as follows:
 - **Raw Water Intake & Pump Station (RWI)** final design efforts continued this month and included coordination with the CMAR on construction issues and energy code requirements, technical

specification development, and hydraulic modeling;

- The final 30% drawings for the **High Service Pump Station (HSPS)** were submitted to the GRP Program Team;
- **HSPS** final design efforts continued this month, including participation in discussions on ground storage tank design considerations and technical specification development;
- The final PER and 30% drawings for the **Surface Water Treatment Plant (SWTP)** were submitted this month;
- Notice to Proceed for final design of the **SWTP** was issued to HDR, Inc. effective February 3, 2012; and
- Final Preliminary Engineering Reports (PER) for the SWF were submitted to the TCEQ for review on February 21, 2012.
- Coordination with **Mid-South Synergy** related to the impact of existing power poles to the design and construction of the surface water transmission system **design segment T-1** alignment continued this month. Following a meeting in late January, the GRP Program Team and the T-1 engineering consultant (Jones & Carter) met with Mid-South Synergy on February 3, February 13, and February 29, 2012 to further discuss the potential for power pole relocation in areas of conflict on along the proposed T-1 alignment as well as potential impacts of Mid-South Synergy facilities on the design segment T-2 proposed alignment. Mid-South Synergy has attempted to provide definitive documentation whether the power poles in question are located within an existing utility easement. They continue to investigate both this issue and the possibility of relocating the power poles, including their possible elimination via an underground conduit installation.
- Due to access and public impact concerns associated with the proposed alignment of **design segment W-4 along Hope Road**, the GRP Program Team decided that the proposed alignment would be rerouted from Hope Road to run along Catfish Lane, Sun Perch Road, and Bullfrog Lane in the Lakeland Subdivision. This proposed realignment will allow the work to be performed within public right-of-way as op-



2.0 SCHEDULE (CONTINUED)

posed to within more loosely defined prescriptive easements. The respective design consultant has been informed of the realignment and is currently preparing a proposal for amending their final design Work Orders to account for the changes. In the meantime, Notice to Proceed was issued for final design of the portion of the design segment not impacted by the realignment.



**Hope Road corridor
(Segment W-4)**

- The GRP Program Team met with the **Texas Commission on Environmental Quality (TCEQ)** on February 2, 2012 and the **Texas Water Development Board (TWDB)** on February 24, 2012 to further discuss the anticipated design review submittal process and schedule for the surface water transmission system design segments and receiving facilities. It was determined that the TCEQ will review the SWF and SWRF design packages, but will defer review of the transmission system design segments to TWDB. TWDB will also review the SWRF design packages. The TWDB has committed to a 30-day turnaround on their review, but anticipates completing their reviews more quickly, which would be beneficial to the GRP Program final design and construction schedules. The GRP Program Team plans to follow up with the TWDB on this issue in May 2012 when the transmission system design segments are further into final design and the submittal schedule is better known.
- Development of the SWF **guide master technical specifications** continued this month with a series of workshops held February 14-17, 2012. The GRP Program Team SWF Project Managers and the SWF design consultants completed the line-by-line review of the approximately 370 technical specifications sections, and final revisions are being made. The SWF specifications are anticipated to be finalized in mid-March 2012. Similar efforts have been initiated for surface water transmission system and SWRF guide master technical specifications. Draft specifications have been distributed to the design consultants

for review and comment. Once comments are received, the GRP Program Team will compile and review the comments, and determine any necessary revisions to the specifications before finalizing them for the design consultants' use. Review and standardization of the construction contract front end documents is planned to occur over the next few months.

- The Program Environmental Consultant (Halff) worked this month on preparing the **final Environmental Assessment (EA)**. A draft final EA is anticipated to be submitted by Halff to the GRP Program Team for review in early March 2012. After receiving and addressing any review comments from the GRP Program Team, Halff will finalize the EA and submit it to the TWDB for review and approval. TWDB approval of the final EA is required for the distribution of WIF funds for use by the GRP Program.

2.2 Construction

Key issues and updates related to the schedules of GRP Program construction activities include:

- This month the SJRA executed a wetland mitigation contract with and issued a check to the **Spellbottom Mitigation Bank** for the purchase of mitigation bank credits. Confirmation of the purchase will be issued to the USACE, upon which the GRP Program may begin construction activities which involve the placement of fill material within waters of the United States. This includes construction of the SWF access road and portions of the surface water transmission system alignment within forested wetlands.
- An agreement for the **relocation of an existing AquaTexas sanitary sewer and access roadway** across the far east side of the SWF site was executed this month between AquaTexas and SJRA. With the agreement in place, the SJRA made preparations for solicitation for bids on the associated construction contract and anticipates advertising for and receiving bids in March 2012.
- Competitive bids were solicited and received this month for the proposed **temporary access roadway** between Longmire Drive and the

2.0 SCHEDULE (CONTINUED)

SWF site. For more information, see Section 3.1 of this report.

- Shop drawings for the **SWTP microfiltration membrane** were submitted by the manufacturer (Pall) to the CMAR (McCarthy Building Co.) this month and are currently under review. The CMAR will continue coordination with Pall on the early acquisition of the membrane. This month, the CMAR continued working with the GRP Program Team and the SWF design consultants as final design is now underway on all SWF. Efforts focused on generating 30% cost models based on submitted preliminary engineering documents, maintaining a value analysis trend log, and managing the master pre-construction schedule for the SWF.
- With Notice to Proceed issued effective January 30, 2012, Brookstone, L.P. began work on **GRP Building No. 1** at the SWF site this month. Progress was made despite inclement weather, with construction of the building pad nearing completion. Foundation construction is planned to commence in early March 2012. Coordination with Entergy for power service took place this month as well. Continued periods of inclement weather could impact the construction schedule. The contract duration is 180 calendar days (July 28, 2012).
- Key-Scape Landscape Construction mobilized early this month on the installation of the **landscape buffer** on the SWF site near communities to its northeast side. A final walk-through inspection was conducted February 20, 2012 and Substantial Completion was reached on February 29, 2012. The contractor will return to the site to check on the progress of the trees and fertilize as necessary towards the end of March 2012.
- This month the GRP Program Team proposed an amendment to the **Non-purposeful Take Permit (NPT)** (originally issued January 12, 2012) to the U.S. Fish and Wildlife Service (USFWS) for consideration. The permit is associated



Landscape buffer at SWF site

with bald eagle nest trees located near the SWF site and prohibits construction activity within a 330-foot perimeter of two (2) nest trees (known as the “middle” and “west” nests) during breeding season. The amendment requested was to permit construction activity in this area during breeding season provided the nests are inactive. USFWS reviewed the request and conveyed to the GRP Program Team that they considered the request to already be covered by the permit. Therefore, an amendment to the permit will not be required and construction activity can occur within the 330-foot perimeter during breeding season as long as the nest remains inactive.

Additionally, a **new eagle nest tree** has been identified on private property just southeast of the SJRA G&A Building. The nest will be regularly monitored for activity and coordination with USFWS will continue as required. Nest activity could impact surface water transmission system T-1 segment construction activity.



3.0 PROCUREMENT

This month the GRP Program Team continued to develop required GRP Program and GRP Project scopes of work for design and consultation services as well as construction contract packages. Current solicitations, contract negotiations, contract awards and a look ahead are included in this section.

3.1 Solicitations

The GRP Program Team has developed and made available, received bids/proposals/Statements of Qualifications (SOQs), and/or selected a firm for award on the following solicitations this month:

- **Temporary Access Road to SWF site:** Ten (10) bids were received on February 7, 2012, with Lindsey Construction submitting the low bid of \$986,431.00. The bids were tabulated and reviewed by the GRP Program Team, resulting in their recommendation of award to Lindsey Construction to the SJRA General Manager and ultimately GRP Review Committee and the SJRA Board of Directors. The SJRA Board of Directors considered the recommendation and awarded the construction contract to Lindsey Construction at its February 23, 2012 meeting.
- **Surface Water Transmission System Construction Management & Inspection (CM&I) Consultant:** Scope and fee negotiations with KBR, Inc. concluded in January. A Professional Services Agreement and Work Order were presented to the GRP Review Committee and the SJRA Board of Directors for consideration at their February 13, 2012 and February 23, 2012 meetings, respectively, at which the SJRA Board of Directors approved the Work Order.

3.2 Contract Awards

The following GRP Program contracts/Work Orders were taken to the February 13, 2012 GRP Review Committee and February 23, 2012 SJRA Board of Directors Meeting, and were authorized by the SJRA Board of Directors for execution by the SJRA General Manager:

- **Schaumburg & Polk, Inc. (SPI):** Work Order Nos. 3, 4, and 5 provide for metes & bounds, final design, and survey services for **Surface Water Transmission System Segment C-2** (\$309,980.00; \$659,325.34; \$25,742.84).

- **Kimley-Horn and Associates, Inc.:** Work Order Nos. 3, 4, and 5 provide for metes & bounds, final design, and survey services for **Surface Water Transmission System Segment C-3** (\$159,740.10; \$494,980.00; \$121,123.45).



- **R.G. Miller Engineers, Inc.:** Work Order Nos. 3, 4, and 5 provide for metes & bounds, final design, and survey services for **Surface Water Transmission System Segment C-4** (\$18,015.80; \$263,034.97; \$18,414.20).
- **KBR, Inc.:** Professional Services Agreement (PSA) and Work Order No. 1 provide for professional **pre-construction phase CM&I services for the surface water transmission system** (\$533,432.62).
- **Lindsey Construction, Inc.:** Construction contract for the construction of the **SWF temporary access road** (\$986,431.00).

3.3 Process and Procedures

There were no significant changes to the procurement process or procedures this month. The GRP Program continues to utilize traditional and alternative project delivery methods in the procurement of consultant and contractor services.

3.4 Look Ahead

The table on the following page provides a very general look ahead at known and anticipated GRP Program professional services and construction contractor solicitations and contract awards. Solicitations may be combined, modified, or canceled and indicated dates or time frames may be modified as deemed necessary.



3.0 PROCUREMENT (CONTINUED)

Solicitation	Purpose	Advertisement/ Negotiation	Board Meeting
SWRF Final Design	Final design services for the Surface Water Receiving Facilities	February 2012; Work Order	March 22, 2012
Metes & Bounds Preparation	Metes & Bounds preparation for easement acquisition for Transmission System Segment W-3	February 2012; Work Order	March 22, 2012
SWTP Blower Building Final Design	Blower building (aeration system) final design for the SWTP	February 2012; Work Order	March 22, 2012
HSPS (GST) Final Design	Baffling, aeration and detention area final design for the HSPS GSTs.	February 2012; Work Order	March 22, 2012
AquaTexas San. and Access Road	Construction for relocation of sanitary sewer, pump Station & package plant access road	March 2012; CSP PDM	April 26, 2012
Construction Management & Inspection	CM&I services during construction phase of Transmission System	April 2012; Work Order	May 24, 2012
Construction Administration and Inspection	Owner's Representative for SWF construction	March 2012; RFQ	June 28, 2012
Construction Materials Testing	Construction materials testing services for Transmission System and SWF	April 2012; RFQ	June 28, 2012
Transmission System Final Design	Final design services for Transmission System Segment C-1	May 2012; Work Orders	June 28, 2012



4.0 COST REPORT AND FINANCIAL CONSIDERATIONS

4.1 GRP Program and GRP Project CIP Budget(s)

Through this month, the GRP Program remains under its \$500,000,000.00 Capital Improvement Project (CIP) (Program) planning budget and forecasts continue to indicate it will be completed under budget (see also subsection 4.6 and Exhibit 7 for debt service liability associated with the planning budget). A summary of the GRP Program's CIP budget and cost considerations as reported to the GRP Review Committee and the SJRA Board of Directors is provided as attached Exhibit 3.

A summary of the SJRA GRP Division's Fiscal Year 2012 (FY12) operating budget (revenue and expenditures) is provided as Exhibit 4. The budget includes all normal and customary expenses for operating a utility based, non-profit business, including debt service, and is developed annually for approval by the SJRA Board of Directors.

The GRP Program is currently operating under the SJRA Board of Director's authorized CIP budget of \$172,400,358.49 (Net - \$156,264,403.45). The CIP budget authorizes the SJRA to secure all of the resources required to perform professional services, non-professional services, and procure long lead time equipment during the design phase of the GRP Program.

4.2 Financial Statement

Funding sources presently applied towards the GRP Program CIP budget include the TWDB's Water Infrastructure Fund (WIF; \$21,500,000.00 [gross]; \$21,076,707.91 [net + interest]), the sale of open market Special Project Revenue Bonds, Series 2011 (\$83,430,358.49 [gross]; \$73,588,705.24 [net + interest]) and TWDB D-Funds (\$67,470,000.00 [gross]; \$61,598,990.30 [net + interest]). Approved funding to-date represents approximately 31.3% of the \$500,000,000.00 planning budget. The GRP Program's funding and contracted commitments are summarized in the following table and further detailed in attached Exhibits 5 and 6.

	PREVIOUS (THRU 1/31/12)	FEBRUARY 2012
A. APPROVED FUNDING	\$172,400,358.49	\$0.00
B. AVAILABLE FUNDING AFTER COSTS	\$156,180,267.74	\$156,264,403.45
C. APPROVED CONTRACTS	\$61,551,304.91	\$4,625,254.82
D. UNCONTRACTED FUNDING (B-C; B+B DEC -C-C DEC)	\$94,628,962.83	\$90,087,843.72
E. CHANGES/CLAIMS	\$0.00	\$0.00
F. INVOICED	\$22,438,690.24	\$3,186,777.49
G. REMAINING FUNDS (B-F; B+B DEC-F-F DEC)	\$133,741,577.50	\$130,638,935.72

4.3 Invoices/Applications for Payment

GRP Program level and GRP Project level consultant Invoices and/or construction contractor Applications for Payment received through March 10, 2012 are represented in the above table (Item F, February 2012). A detailed breakdown of consultant invoices and/or construction contractor pay applications received for services performed this month appears in following table.

	PREVIOUS (THRU 1/31/12)	FEBRUARY 2012
ENGINEERING & SPECIALTY CONSULTANT (PROGRAM)	\$7,866,611.13	\$732,912.55
ENGINEERING & SPECIALTY CONSULTANT (PROJECT)	\$14,001,505.29	\$2,041,766.84
CONSTRUCTION CONTRACTOR / CMAR	\$570,573.82	\$412,098.10
TOTALS:	\$22,438,690.24	\$3,186,777.49



4.0 COST REPORT AND FINANCIAL CONSIDERATIONS (CONTINUED)

4.4 Contract Amendments and Change Orders

No Contract Amendments or Change Orders were identified or approved by the SJRA Board of Directors this month.

4.5 Claims

No claims were identified this month.

4.6 CIP Cash Flow

The GRP Program CIP cash flow through SJRA FY2015 reflects known expenditures through February 2012 and estimates for future expenditures were updated this month. All active and currently identified future GRP Program Projects and initiatives are included in the cash flow. A graph of forecasted monthly expenditures from the referenced cash flow is attached as Exhibit 7.

4.7 CIP Budget Estimates at Completion

4.7.1 GRP Program

Comparison of in-place funding against currently contracted and identified near term GRP Program contracting needs (plus contingency) indicates that current funding will allow the GRP Program to **meet its currently forecasted expenditure needs through Spring 2013.**

At their February 2, 2012 meeting, the **Texas Water Development Board's** Finance Committee approved the SJRA's application for **\$175,000,000.00** (gross) in additional funding from the **TWDB's D-Fund**. Closing for these funds is anticipated in June or July 2012. Requested funding is currently earmarked for surface water transmission system construction project expenditures.

The **total gross funds required to execute Phase I** of the GRP Program are currently estimated at \$559,400,358.49.

4.7.2 GRP Projects

The GRP Program Projects remained within their approved contract budgets through this month. Exhibit 8 indicates each active GRP Program Project and GRP Program contract forecasted estimate to completion (EAC). Additionally, all current GRP Program contracts, including their respective SJRA Board of Directors approved budgeted amounts and percent complete, are listed in Exhibit 2.

4.8 Land Acquisition

Acquisition efforts continued in earnest this month. The GRP Program Team, along with the assorted GRP Program land acquisition consultants and counsel, maintained focus on **easement acquisitions for the T-1 water transmission system design segment** near SH 105 and McCaleb Road. This month, checks were issued for the acquisition of two (2) easements along design segment T-1. Easement needs along the T-2 and T-3 design segments were better defined this month while title research and easement identification efforts for the "C" and "W" design segments are being initiated with the completion of their preliminary design. Acquisition efforts are anticipated to accelerate in the next few months as needs are more precisely defined. Cumulative easement acquisition activity is depicted in attached Exhibit 9.

5.0 QUALITY ASSURANCE

GRP Program quality assurance efforts this month focused on reviewing the final preliminary engineering submittals for two (2) of the SWF. Final design is underway or will begin soon on all three (3) of the SWF and ten (10) of the eleven (11) surface water transmission system design segments. During final design, quality assurance efforts will be focused on the review 60%, 90% and final drawings as well as the development of construction documents and technical specifications.

Preliminary Engineering

This month's activity associated with the Preliminary Engineering Reports (PERs) and 30% (complete) design drawings produced by the engineering consultants is as follows:

1. **HDR (SWTP)** – Review comments on the draft PER and 30% drawings have been addressed; Final PER and 30% drawings submitted February 14, 2012.
2. **AECOM (HSPS)** – Review comments on the draft 30% drawings have been addressed; Final 30% drawings were submitted February 27, 2012.



Final Design

Final design began or continued in its early stages for many of the GRP Projects. The engineering consultants are reviewing and making any necessary revisions to their Consultant Project Management Plans and QA/QC Plans. The GRP Program Team is reviewing these revisions for compliance with the Program Management Plan.

As final design progresses and milestone submittals are received, the GRP Program Team will review and provide comments, as applicable to each milestone. The review will be based on submittal compliance with the GRP Program's Design Standards and Criteria Manual, completeness per Program Management Plan (PMP) Section 14.0 – Quality Management and PMP Section 21.0 – Design Management, and general project understanding.

Construction

While construction of the SWF and surface water transmission system is not anticipated to begin until later this year, several construction projects associated with the SWF site have begun (GRP Building No. 1; Landscape Buffer) or will begin soon (Temporary Access Road). Through construction of these projects, an SJRA Construction Inspector will make regular visits to the project site to observe progress and confirm compliance with the construction contract.

6.0 EXHIBITS

Exhibit 1 - GRP Program Schedule

Exhibit 2 - Active Contracts

Exhibit 3 - Monthly GRP Program Financing Report

Exhibit 4 - SJRA GRP Schedule of Revenues & Expenses - Actual & Budget
and Clarification of Actual & Budget Variances

Exhibit 5 - GRP Program Fund Data

Exhibit 6 - Funding Source Summary

Exhibit 7 - GRP Monthly Forecasted Expenditures for Contracted Services

Exhibit 8 - Estimate at Completion (EAC) for Current Authorizations

Exhibit 9 - Land Acquisition Summary

Exhibit 10 - GRP Program Monthly Meeting Log



Exhibit 1 - GRP Program Schedule

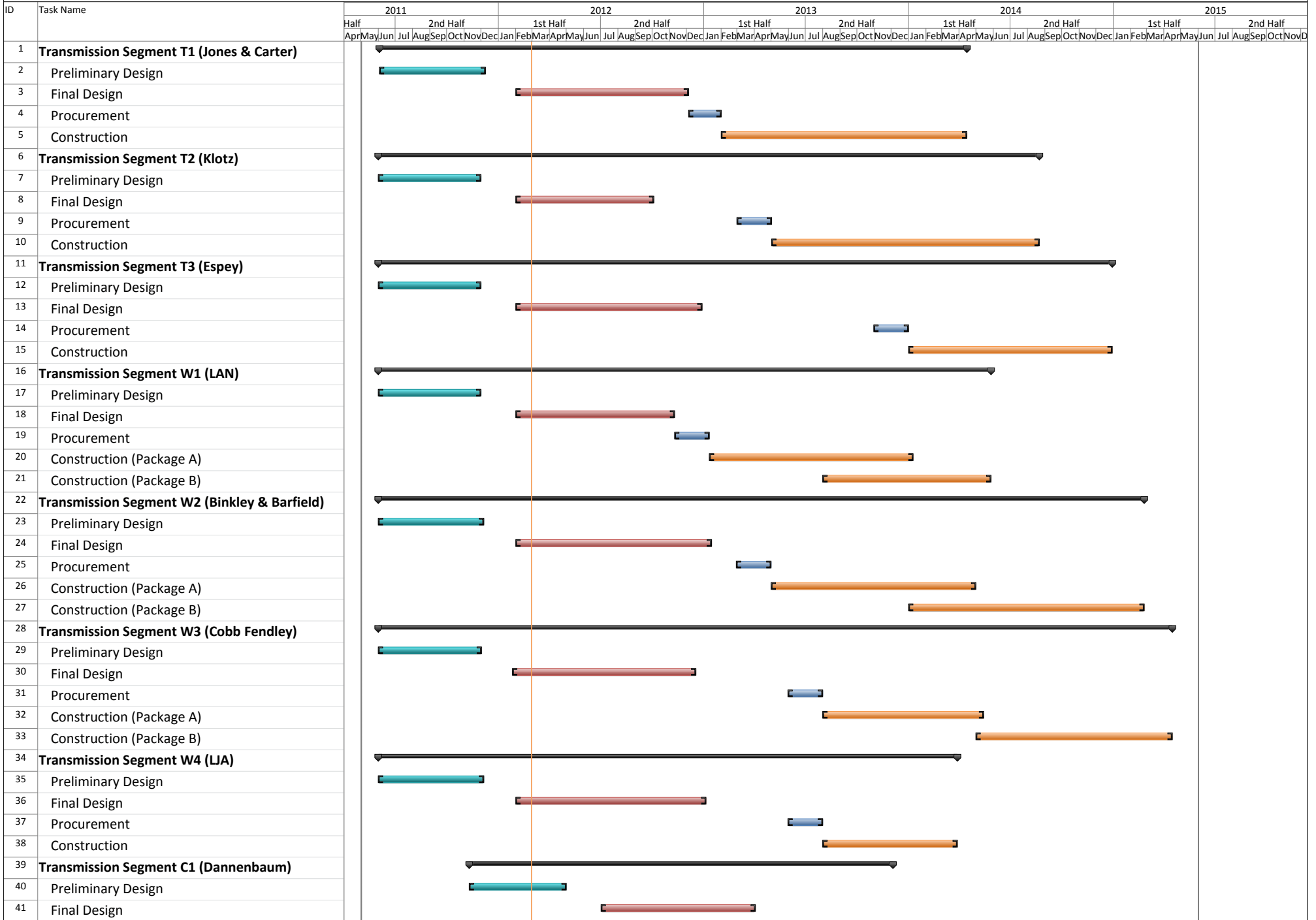


Exhibit 1 - GRP Program Schedule

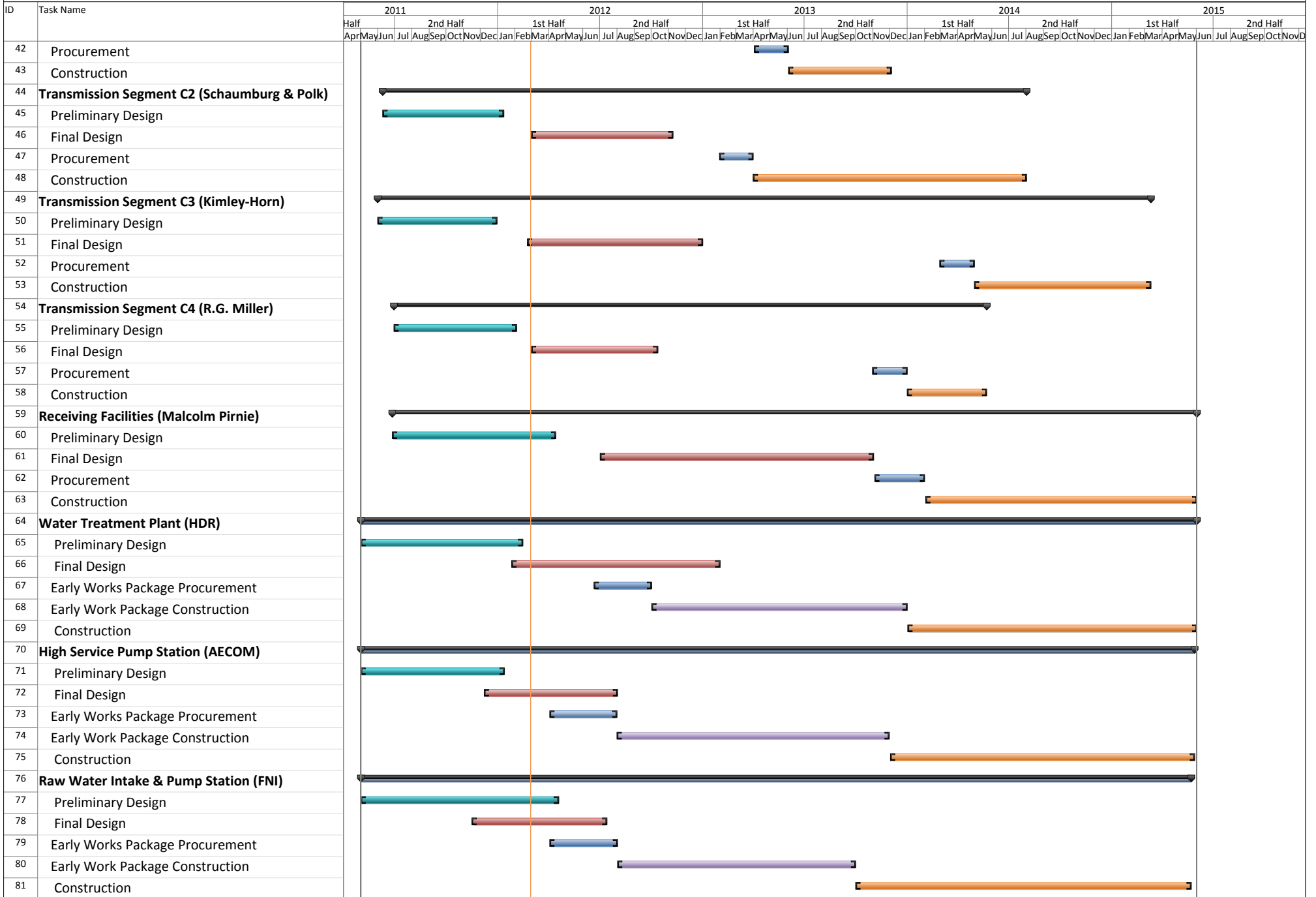




Exhibit 2 Active Contracts February 29, 2012

Engineering Consultant	Project Name	PER Fee	Percent Complete	Metes & Bounds Fee	Percent Complete	Final Design Fee	Percent Complete	CPS Fee	Percent Complete	Engineer's Construction Cost Estimate
HDR, Inc.	Water Treatment Plant	\$ 3,104,114	98%			7,694,130	5%			\$ 135,000,000
AECOM, Inc.	High Service Pump Station	\$ 1,224,776	100%			1,895,488	15%			\$ 39,960,000
Freeze and Nichols, Inc.	Raw Water Intake and Pump Station	\$ 1,249,700	100%			1,284,900	20%			\$ 21,000,000
ACES	Access Rd. & San. Swr. Relocation; Temp. SWF Access Rd.					435,000	100%			\$ 3,242,000
EMA, Inc.	Fiber Optic System	\$ 161,390	90%			279,899	0%			\$ 4,400,000
TOTALS		\$ 13,885,616	-	\$ 902,121	-	20,336,401	-	\$ -	-	\$ 362,653,297



Exhibit 2 Active Contracts February 29, 2012

Engineering Consultant	Program Consultant Service	Total Fee of Work Orders	Percent Complete
Brown & Gay Engineers	Program Management	\$ 7,244,751	70%
Raba Kistner	Geotechnical	\$ 145,260	55%
LandTech	Survey	\$ 514,524	87%
Halff	Environmental	\$ 1,065,324	92%
Property Acquisition Services	Land Acquisition	\$ 1,415,550	56%
V&A	Cathodic Protection	\$ 511,978	0%
KDM	Land Acquisition	\$ 401,700	32%
Andrews Kurth	Legal	\$ 900,000	49%
Mike Bellar	Legal	\$ 100,000	11%
Brown & Caldwell	Legal	\$ 123,857	68%
Greenburg Traurig	Legal	\$ 200,000	48%
AECOM	Transient	\$ 374,100	48%
McCarthy	CMAR	\$ 10,346,793	42%
KBR	CM&I	\$ 533,433	0%
Total		\$ 23,877,269	



Exhibit 3

Monthly GRP Program Financing Report

Fiscal Year 2012

Through 2/29/2012

	WIF Funds	2011 Special Projects Revenue Bonds	TWDB 2011 'D' Fund	Totals
A. Program Budget				
Authorized Base Budget	\$ 21,500,000.00	\$ 83,430,358.49	\$ 67,470,000.00	\$ 172,400,358.49
Earned Interest	\$ 47,044.99	\$ 66,352.66	\$ 46,418.63	\$ 159,816.28
Total Investment	\$ 21,547,044.99	\$ 83,496,711.15	\$ 67,516,418.63	\$ 172,560,174.77
B. Contracted Costs				
Contracts Completed	\$ 2,512,963.00	\$ 289,327.52	\$ -	\$ 2,802,290.52
Current Contract Values	\$ 18,498,218.89	\$ 44,291,624.42	\$ 584,425.90	\$ 63,374,269.21
Change Orders	\$ -	\$ -	\$ -	\$ -
Total	\$ 21,011,181.89	\$ 44,580,951.94	\$ 584,425.90	\$ 66,176,559.73
C. Expenditures				
Paid Previous Fiscal Years	\$ 8,359,940.89	\$ 85,949.90	\$ -	\$ 8,445,890.79
Paid Current Fiscal Year	\$ 10,595,057.50	\$ 4,428,760.58	\$ 30,400.00	\$ 15,054,218.08
Issuance Costs	\$ 470,337.08	\$ 2,049,764.39	\$ 751,195.33	\$ 3,271,296.80
Capitalized Interest	\$ -	\$ 7,858,241.52	\$ 5,166,233.00	\$ 13,024,474.52
Total	\$ 19,425,335.47	\$ 14,422,716.39	\$ 5,947,828.33	\$ 39,795,880.19
D. Remaining				
Uncontracted Funds	\$ 65,526.02	\$ 29,007,753.30	\$ 61,014,564.40	\$ 90,087,843.72
Fund Balance	\$ 2,121,709.52	\$ 69,073,994.76	\$ 61,568,590.30	\$ 132,764,294.58

Exhibit 4
San Jacinto River Authority
Groundwater Reduction Plan
Schedule of Revenues & Expenses - Actual & Budget
For the Five Months Ending January 31, 2012

	<u>January</u>			<u>Year To Date</u>		
	<u>Actual</u>	<u>Budget</u>	<u>Variance</u>	<u>Actual</u>	<u>Budget</u>	<u>Variance</u>
OPERATING REVENUES						
Water sales						
GRP pumping fees	\$ 613,702.15	\$ 1,306,462.50	\$ (692,760.35)	\$ 5,940,841.79	\$ 5,380,488.50	\$ 560,353.29
TOTAL OPERATING REVENUES	613,702.15	1,306,462.50	(692,760.35)	5,940,841.79	5,380,488.50	560,353.29
OPERATING EXPENSES						
Payroll & employee benefit expenses	119,314.70	229,796.47	110,481.77	632,291.99	1,125,902.59	493,610.60
Professional fees	2,563.60	29,422.00	26,858.40	(13,421.91)	408,010.00	421,431.91
Purchased & contracted services	5,614.53	22,334.00	16,719.47	36,034.98	123,666.00	87,631.02
Supplies, materials & utilities	1,054,845.29	1,742,784.75	687,939.46	1,094,280.92	2,355,717.75	1,261,436.83
Maintenance repairs, parts & rentals	712.95	1,167.33	454.38	7,259.35	5,828.65	(1,430.70)
General & administration	46,151.00	84,439.88	38,288.88	225,773.03	422,199.40	196,426.37
TOTAL OPERATING EXPENSES	1,229,202.07	2,109,944.43	880,742.36	1,982,218.36	4,441,324.39	2,459,106.03
NON-OPERATING REVENUES & EXPENSES						
Interest on investments	102,685.09	15,410.33	87,274.76	211,234.11	77,051.65	134,182.46
Unrealized Gains (losses) on investments	69,360.31		69,360.31	69,360.31		69,360.31
Realized Gains (losses) on investments	(15,133.23)		(15,133.23)	(15,133.23)		(15,133.23)
Other revenues	14.35		14.35	583.51		583.51
Depreciation	(5,993.06)		(5,993.06)	(16,214.06)		(16,214.06)
Interest expense	(530,535.27)	(144,458.67)	(386,076.60)	(1,951,778.65)	(722,293.35)	(1,229,485.30)
Amortized debt issuance expense	(10,947.33)		(10,947.33)	(44,237.41)		(44,237.41)
TOTAL NON-OPERATING	(390,549.14)	(129,048.34)	(261,500.80)	(1,746,185.42)	(645,241.70)	(1,100,943.72)
NET INCOME (LOSS)	\$(1,006,049.06)	\$ (932,530.27)	\$ (73,518.79)	\$ 2,212,438.01	\$ 293,922.41	\$ 1,918,515.60

Exhibit 4

GRP Division

Clarification of Actual & Budget Variances

(in thousands)

Category	Driver	September 2011	October 2011	November 2011	December 2011	January 2012	FYTD 2012
GRP Pumping Fees	Usage variance Sep-Nov due to drought conditions; usage variance Dec-Jan due to wet conditions	912	468	205	(333)	(693)	560
Payroll and related expenses	Actual labor and related expenses less than budgeted	68	102	99	114	110	494
Professional Fees	Legal, Engineering & Consultants budgeted straight-line, should correct over time	69	79	103	21	17	288
	Staffing Services budgeted straight-line, should correct over time	48	23	32	20	10	134
Purchased & Contracted Services	Contracted Services budgeted straight-line, should correct over time	9	7	15	12	13	56
	Water Conservation & Public Education Activities budgeted straight-line, should correct over time	14	4	6	4	4	32
Supplies, Materials, Utilities, Maintenance, Repairs, Parts & Rentals	Additional Water Supply, lump sum budget in Sept., should correct over time	500	-	-	-	-	500
	Reservation Fees: COH \$100,861.24 due to 2011 true-up SJRA: \$583,538.00, payment made in February	-	-	-	-	684	684
	Supplies, Materials, Utilities, Maintenance, Repairs, Parts & Rentals expenses less than budgeted	20	18	19	14	4	76
General & Administration	Actual labor and related expenses less than budgeted	64	38	27	30	38	196
Non-Operating	Non-Operating expenses more than budgeted; largely driven by bond interest expense	(186)	(199)	(186)	(268)	(262)	(1,101)
		1,518	540	320	(387)	(74)	1,919



Exhibit 5 GRP Program Fund Data March 12, 2012

Funding Source	Amount Authorized by Board To-Date	Bond Costs	Capitalized Interest	Interest	Amount Available	Pending Funding Source	Invoiced To-Date	Remaining Amount
WIF Bond Issue	\$ 21,500,000.00	\$ 470,337.08	\$ -	\$ 47,044.99	\$ 21,076,707.91	\$	19,135,633.95	\$ 1,941,073.96
Open Market Bond Issue	\$ 83,430,358.49	\$ 2,049,764.39	\$ 7,858,241.52	\$ 66,352.66	\$ 73,588,705.24	\$	4,626,155.74	\$ 68,962,549.50
TWDB 'D' Fund Bond Issue	\$ 67,470,000.00	\$ 751,195.33	\$ 5,166,233.00	\$ 46,418.63	\$ 61,598,990.30	\$	30,400.00	\$ 61,598,990.30
TWDB 'D' Fund (2)(Est)	\$ 175,000,000.00	\$ 980,000.00	\$ 13,405,000.00			\$ 160,615,000.00	-	\$ 160,615,000.00
2012 "A" Bond Issue (Est.)	\$ 212,000,000.00	\$ 5,800,000.00	\$ 22,090,400.00			\$ 184,109,600.00	-	\$ 184,109,600.00
Totals	\$ 559,400,358.49	\$ 10,051,296.80	\$ 48,519,874.52	\$ 159,816.28	\$ 156,264,403.45	\$ 344,724,600.00	\$ 23,792,189.69	\$ 477,227,213.76

Red items are estimates only.



Exhibit 6 Funding Source Summary March 12, 2012

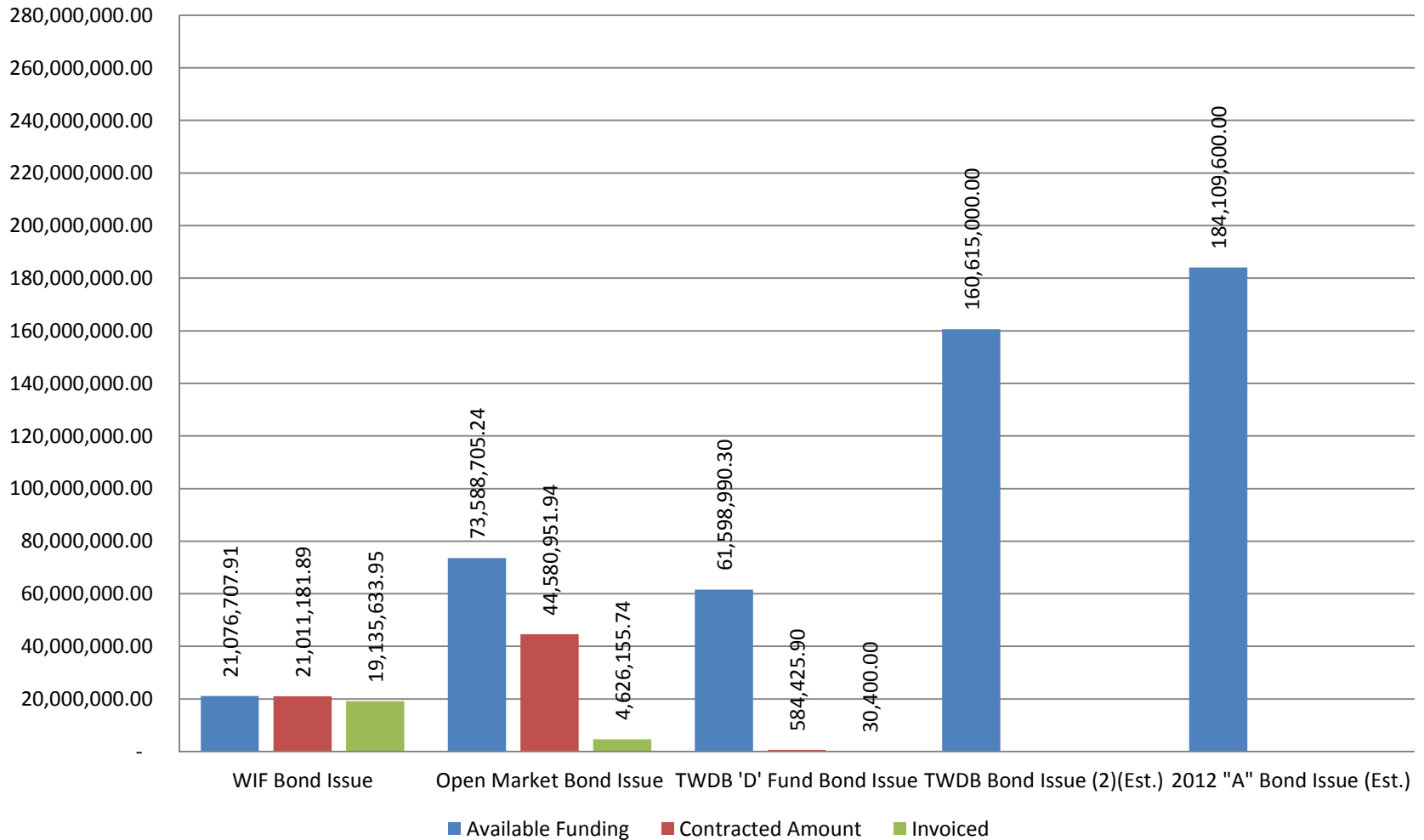




Exhibit 7

GRP Program Monthly Forecasted Expenditures for Contracted Services March 12, 2012

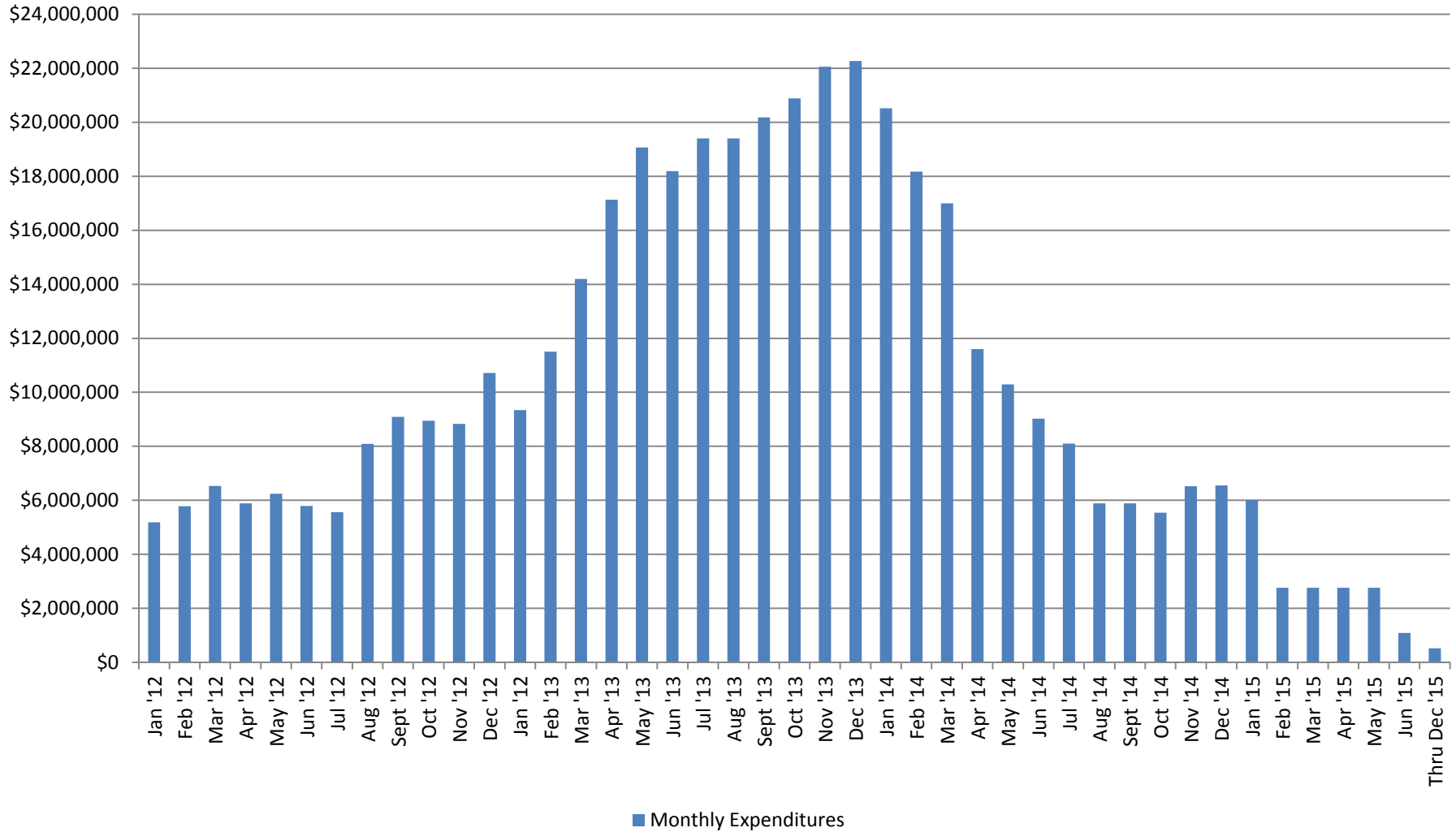




Exhibit 8

Estimate at Completion (EAC) for Current Authorizations

February 29, 2012

Surface Water Transmission System

Project	Firm	Amount Authorized by Board	Board Authorized Modifications		Forecasted Modification Amount	Estimate at Completion (EAC)
			Dollars	%		
T1	Jones & Carter	\$ 1,898,348.00		0.0%		\$ 1,898,348.00
T2	Klotz	\$ 1,613,958.55		0.0%		\$ 1,613,958.55
T3	Espey	\$ 1,555,154.42		0.0%		\$ 1,555,154.42
W1	LAN	\$ 2,104,294.00		0.0%		\$ 2,104,294.00
W2	Binkley & Barfield	\$ 2,317,042.55		0.0%		\$ 2,317,042.55
W3	Cobb Fendley	\$ 2,717,213.50		0.0%		\$ 2,717,213.50
W4	LJA	\$ 876,011.82		0.0%		\$ 876,011.82
C1	Dannenbaum	\$ 332,300.00		0.0%		\$ 332,300.00
C2	Schaumburg & Polk	\$ 1,790,745.97	\$ 207,547.98	11.6%		\$ 1,998,293.95
C3	Kimley-Horn	\$ 1,234,193.45	\$ 32,307.28	2.6%		\$ 1,266,500.73
C4	R.G. Miller	\$ 516,971.97		0.0%		\$ 516,971.97
RFs	Malcolm Pirnie/Arcadis	\$ 598,651.00		0.0%		\$ 598,651.00
CM&I	KBR	\$ 533,432.62		0.0%		\$ 533,432.62
Subtotal - Surface Water Transmission System		\$ 18,088,317.85	\$ 239,855.26	1.3%	\$ -	\$ 18,328,173.11

Surface Water Facilities

Project	Firm	Amount Authorized by Board	Board Authorized Modifications		Forecasted Modification Amount	Estimate at Completion (EAC)
			Dollars	%		
WTP	HDR	\$ 13,357,639.00		0.0%		\$ 13,357,639.00
HSPS	AECOM	\$ 3,288,159.00		0.0%		\$ 3,288,159.00
RWI&PS	Freese and Nichols	\$ 2,600,970.00		0.0%		\$ 2,600,970.00
CMAR	McCarthy	\$ 10,346,793.00		0.0%		\$ 10,346,793.00
Subtotal - Surface Water Facilities		\$ 29,593,561.00	\$ -	0.0%	\$ -	\$ 29,593,561.00



Exhibit 8

Estimate at Completion (EAC) for Current Authorizations

February 29, 2012

Program Consultant Services & Other Projects

Project	Firm	Amount Authorized by Board	Board Authorized Modifications		Forecasted Modification Amount	Estimate at Completion (EAC)
			Dollars	%		
Prog Mgmt	Brown & Gay	\$ 7,244,751.00		0.0%		\$ 7,244,751.00
Prog Survey	Landtech	\$ 514,524.00		0.0%		\$ 514,524.00
Prog Geo	Raba Kistner	\$ 145,260.00		0.0%		\$ 145,260.00
Prog Tran	AECOM	\$ 224,100.00	\$ 150,000.00	66.9%		\$ 374,100.00
Access Rd	ACES	\$ 435,000.00		0.0%		\$ 435,000.00
Access Rd	S&V Survey	\$ 66,875.00		0.0%		\$ 66,875.00
Land Acq	KDM	\$ 359,995.00	\$ 41,705.00	11.6%		\$ 401,700.00
Land Acq	PAS	\$ 1,415,550.00		0.0%		\$ 1,415,550.00
Prog Env	Halff	\$ 1,022,192.00	\$ 43,131.52	4.2%		\$ 1,065,323.52
Prog Fiber	EMA	\$ 441,289.00		0.0%		\$ 441,289.00
Prog Corr	V&A	\$ 511,978.00		0.0%		\$ 511,978.00
Prog Svcs & Projs	Other Program Services & Projects	\$ 2,533,018.00		0.0%		\$ 2,533,018.00
Subtotal - Program Consultant Services & Other Projects		\$ 14,914,532.00	\$ 234,836.52	1.6%	\$ -	\$ 15,149,368.52

Construction Contracts

Project	Firm	Amount Authorized by Board	Board Authorized Modifications		Forecasted Modification Amount	Estimate at Completion (EAC)
			Dollars	%		
GRP Bldg #1	Brookstone	\$ 2,009,900.00		0.0%		\$ 2,009,900.00
Bldg #1 CMT	Aviles	\$ 48,193.60		0.0%		\$ 48,193.60
Landscape Buffer	KeyScape	\$ 47,490.00		0.0%		\$ 47,490.00
Temp Access Road	Lindsey Construction	\$ 986,431.00		0.0%		\$ 986,431.00
Access Road CMT	Terracon Consultants	\$ 12,842.50				\$ 12,842.50
Other	Other Construction Contracts	\$ 600.00		0.0%		\$ 600.00
Subtotal - Surface Water Facilities		\$ 3,105,457.10	\$ -	0.0%	\$ -	\$ 3,105,457.10

Totals

	Amount Authorized by Board	Board Authorized Modifications		Forecasted Modification Amount	Estimate at Completion (EAC)
		Dollars	%		
Subtotal - Surface Water Transmission System	\$ 18,088,317.85	\$ 239,855.26	1.3%	\$ -	\$ 18,328,173.11
Subtotal - Surface Water Facilities	\$ 29,593,561.00	\$ -	0.0%	\$ -	\$ 29,593,561.00
Subtotal - Program Consultant Services & Other Projects	\$ 14,914,532.00	\$ 234,836.52	1.6%	\$ -	\$ 15,149,368.52
Subtotal - Construction Contracts	\$ 3,105,457.10	\$ -	0.0%	\$ -	\$ 3,105,457.10
Total	\$ 65,701,867.95	\$ 474,691.78	0.7%	\$ -	\$ 66,176,559.73



Exhibit 9

Land Acquisition Summary

February 29, 2012

Project	Anticipated Number of Easements to Acquire	Easements Acquired This Month	Easements Acquired Total
Transmission System Segment T-1	56	0	1
Transmission System Segment T-2	TBD	0	0
Transmission System Segment T-3	33	0	0
Transmission System Segment C-1	TBD	0	0
Transmission System Segment C-2	TBD	0	0
Transmission System Segment C-3	TBD	0	0
Transmission System Segment C-4	TBD	0	0
Transmission System Segment W-1	TBD	0	0
Transmission System Segment W-2	TBD	0	0
Transmission System Segment W-3	TBD	0	0
Transmission System Segment W-4	TBD	0	0
Totals:	89	0	1



Exhibit 10

GRP Program Monthly Meeting Log

February 29, 2012

Meeting	Agenda	Location	Date	Participants
Regulatory Requirements for Transmission System		TCEQ Office, Austin	Thursday February 2, 2012	TCEQ, GRP Program Team staff
Electrical Relocation with Mid-South Synergy		SJRA G&A Office	Friday February 3, 2012	Mid-South Synergy, GRP Program Team staff
AECOM CMAR Workshop 1	Chemical trench types, GST aeration	SJRA G&A Office	Tuesday February 7, 2012	AECOM, McCarthy, GRP Program Team staff
FNI CMAR Workshop 1	CMU wall sealing, electrical duct routing, security	SJRA G&A Office	Tuesday February 7, 2012	FNI, McCarthy, GRP Program Team staff
HDR CMAR Workshop 1	Discharge permit, aeration in the GSTs, TCEQ process review	SJRA G&A Office	Wednesday February 8, 2012	HDR, McCarthy, GRP Program Team staff
Transmission Line W-2 Final Design Kickoff Meeting		SJRA G&A Office	Wednesday February 8, 2012	BBI, GRP Program Team staff
Transmission Line W-3 Final Design Kickoff Meeting		SJRA G&A Office	Wednesday February 8, 2012	Cobb Fendley, GRP Program Team staff
Water Receiving Facilities Infrastructure Needs		SJRA G&A Office	Thursday February 9, 2012	Malcolm Pirnie, GRP Program Team staff
Conroe Pipeline Route Briefing		SJRA G&A Office	Friday February 10, 2012	Local municipality representatives, GRP Program Team staff
Transmission Line W-1 Final Design Kickoff Meeting		SJRA G&A Office	Friday February 10, 2012	LAN, GRP Program Team staff
GRP Program Review Committee Meeting		SJRA G&A Office	Monday February 13, 2012	Review Committee, GRP Program Team staff, general public



Exhibit 10

GRP Program Monthly Meeting Log

February 29, 2012

Meeting	Agenda	Location	Date	Participants
Electrical Relocation with Mid-South Synergy		SJRA G&A Office	Monday February 13, 2012	Mid-South Synergy, GRP Program Team staff
Surface Water Facilities Electrical Coordination Meeting		Web Meeting	Monday February 13, 2012	GRP Program Team staff, HDR, FNI, AECOM, McCarthy
Master Spec Review Workshop #6		Web Meeting	Tuesday February 14, 2012	AECOM, HDR, FNI, GRP Program Team staff
Construction Sequencing Meeting		SJRA G&A Office	Tuesday February 14, 2012	KBR, GRP Program Team staff
Master Spec Review Workshop #7		Web Meeting	Wednesday February 15, 2012	AECOM, HDR, FNI, GRP Program Team staff
Parcel Number Discussion		SJRA G&A Office	Wednesday February 15, 2012	GRP Program Team staff
Preliminary Site Layout/Improvements Presentation		SJRA G&A Office	Wednesday February 15, 2012	Oak Ridge North, Malcolm Pirnie, GRP Program Team staff
Transmission Line T-3 Final Design Kickoff Meeting		SJRA G&A Office	Wednesday February 15, 2012	Espey, GRP Program Team staff
Master Spec Review Workshop #8		Web Meeting	Thursday February 16, 2012	AECOM, HDR, FNI, GRP Program Team staff
Master Spec Review Workshop #9		Web Meeting	Friday February 17, 2012	AECOM, HDR, FNI, GRP Program Team staff
Soil Conditions Discussion		SJRA G&A Office	Friday February 17, 2012	Brookstone, Fugro, HDR, GRP Program Team staff
Transmission Line T-2 Final Design Kickoff Meeting		SJRA G&A Office	Friday February 17, 2012	Klotz, GRP Program Team staff



Exhibit 10

GRP Program Monthly Meeting Log

February 29, 2012

Meeting	Agenda	Location	Date	Participants
AECOM CMAR Workshop 2	Impacts to GST foundation, location of HDR blower building, early work package items	SJRA G&A Office	Tuesday February 21, 2012	AECOM, McCarthy, GRP Program Team staff
FNI CMAR Workshop 2	Wall construction, intake screen construction, early work package items	SJRA G&A Office	Tuesday February 21, 2012	FNI, McCarthy, GRP Program Team staff
Transmission Line T-1 Final Design Kickoff Meeting		SJRA G&A Office	Tuesday February 21, 2012	Jones & Carter, FNI, GRP Program Team staff
Monthly Northern Montgomery County GRP Program Technical Status Meeting		SJRA G&A Office	Wednesday February 22, 2012	Joint GRP Participant representatives, GRP Program Team staff
Information Session on Construction of Water Transmission Lines		Lone Star College Conference Center	Wednesday February 22, 2012	Joint GRP Participant representatives, general public, GRP Program Team staff
HDR CMAR Workshop 2	Facility generation design, chemical trench design, PALL membrane shop drawing issues	SJRA G&A Office	Wednesday February 22, 2012	HDR, McCarthy, GRP Program Team staff
Monthly Southern Montgomery County GRP Program Technical Status Meeting		SJRA Woodlands Office	Thursday February 23, 2012	Joint GRP Participant representatives, GRP Program Team staff
SJRA Board of Directors Meeting		SJRA G&A Office	Thursday February 23, 2012	SJRA Board of Directors, GRP Program Team staff, general public



Exhibit 10

GRP Program Monthly Meeting Log

February 29, 2012

Meeting	Agenda	Location	Date	Participants
Information Session on Construction of Water Transmission Lines		SJRA G&A Office	Thursday February 23, 2012	Joint GRP Participant representatives, general public, GRP Program Team staff
Transmission line W-4 Final Design Kickoff Meeting		SJRA G&A Office	Thursday February 23, 2012	LJA, S&V, GRP Program Team staff
GRP Transmission Line Discussion		TWDB Office	Friday February 24, 2012	TWDB, GRP Program Team staff
McCaleb Road with Mid-South Synergy		SJRA G&A Office	Wednesday February 29, 2012	Mid-South Synergy, GRP Program Team staff
Construction Sequencing Meeting		SJRA G&A Office	Wednesday February 29, 2012	KBR, GRP Program Team staff