



# Groundwater Reduction Plan Program Monthly Progress Report - August 2012

San Jacinto River Authority





TABLE OF CONTENTS

<b>Table of Contents</b>	<b>i</b>	4.5 Claims	4-2
<b>Acronyms and Definitions</b>	<b>ii</b>	4.6 CIP Cash Flow	4-2
<b>1.0 Planning</b>	<b>1-1</b>	4.7 CIP Budget Estimates at Completion	4-2
1.1 Strategic	1-1	4.8 Land Acquisition	4-2
1.2 Engineering and Construction	1-1	<b>5.0 Quality Assurance</b>	<b>5-1</b>
1.3 Meetings	1-1	<b>6.0 Exhibits</b>	<b>6-1</b>
<b>2.0 Schedule</b>	<b>2-1</b>		
2.1 Engineering	2-1		
2.2 Construction	2-1		
<b>3.0 Procurement</b>	<b>3-1</b>		
3.1 Solicitations	3-1		
3.2 Contract Awards	3-1		
3.3 Process and Procedures	3-1		
3.4 Look Ahead	3-1		
<b>4.0 Cost Report and Financial Considerations</b>	<b>4-1</b>		
4.1 GRP Program and GRP Project CIP Budget(s)	4-1		
4.2 Financial Report	4-1		
4.3 Invoices/Applications for Payment	4-1		
4.4 Contract Amendments and Change Orders	4-2		



## ACRONYMS AND DEFINITIONS

### Acronyms

<b>CA&amp;I</b>	Construction Administration and Inspection
<b>CCT</b>	Construction Communication Team
<b>CIP</b>	Capital Improvement Project
<b>CM&amp;I</b>	Construction Management and Inspection
<b>CMAR</b>	Construction Manager at Risk
<b>CMT</b>	Construction Material Testing
<b>CSB / P</b>	Competitive Sealed Bid / Proposal
<b>EA</b>	Environmental Assessment
<b>EAC</b>	Estimate At Completion
<b>GIS</b>	Geographic Information System
<b>GRP</b>	Groundwater Reduction Plan
<b>GST</b>	Ground Storage Tank
<b>HSPS</b>	High Service Pump Station
<b>LSGCD</b>	Lone Star Groundwater Conservation District
<b>LVGU</b>	Large Volume Groundwater User
<b>PER</b>	Preliminary Engineering Report
<b>PMP</b>	Program Management Plan
<b>PSA</b>	Professional Services Agreement
<b>QA</b>	Quality Assurance
<b>RFB / Q / P</b>	Request For Bids / Qualifications / Proposals
<b>RWI / RWPS</b>	Raw Water Intake / Raw Water Pump Station
<b>SJRA</b>	San Jacinto River Authority
<b>SOQ</b>	Statement Of Qualifications
<b>SWF</b>	Surface Water Facilities (SWTP, HSPS and RWI)
<b>SWRF</b>	Surface Water Receiving Facilities
<b>SWTP</b>	Surface Water Treatment Plant
<b>TBD</b>	To Be Determined
<b>TCEQ</b>	Texas Commission on Environmental Quality
<b>TWDB</b>	Texas Water Development Board
<b>TxDOT</b>	Texas Department Of Transportation
<b>WIF</b>	Water Infrastructure Fund

### Definitions

<b>GROUNDWATER REDUCTION PLAN (GRP)</b>	The document developed and filed with the LSGCD indicating SJRA's plan to reduce the permitted 2009 groundwater pumpage of its GRP Participants by 30%. The GRP is administered by the SJRA, including any supplements, revisions, or amendments.
<b>GRP PROGRAM TEAM</b>	SJRA staff, Program Management Consultant (Brown & Gay Engineers, Inc.) staff, and technical consultants working interdependently toward meeting the goals of the Groundwater Reduction Plan.
<b>GRP ADMINISTRATOR</b>	The SJRA General Manager's designee who administers the SJRA Groundwater Reduction Plan and GRP Contract with GRP Participants.
<b>GRP CONTRACT</b>	Contract between the SJRA and a Participant to be included in the SJRA's efforts to meet the surface water conversion requirements mandated by the LSGCD.
<b>JOINT GRP</b>	GRP which is prepared to include (takes into account) LVGUs who have executed a GRP Contract with the SJRA to join the SJRA's GRP. Contracted LVGUs obtain LSGCD groundwater reduction regulation compliance through the SJRA's Joint GRP without preparing and submitting a GRP.
<b>LARGE VOLUME GROUNDWATER USER(s) (LVGU)</b>	Any person or entity that, through a single well or a combination of wells, actually produces or is authorized by permit(s) issued by the LSGCD to produce 10 million gallons or more of groundwater annually on or after January 1, 2008.
<b>PARTICIPANT(s)</b>	Regulated User(s) that enters into and remains subject to a written agreement with the SJRA to be included in the SJRA's GRP and includes the legal successors or assigns of Participant(s).
<b>REGULATED USER(s)</b>	Any public or private entity or person that is or becomes subject to the District Regulatory Plan established by the LSGCD and includes any amendments, revisions or supplements thereto as may be adopted by the LSGCD.
<b>SJRA GRP DIVISION</b>	Division of the SJRA responsible for GRP compliance, and the management, administration, operation and maintenance of the surface water facilities and surface water transmission system.



## 1.0 PLANNING

The GRP Program Team meets regularly for the purposes of setting performance expectations and goals of the GRP Program, identifying the efforts required to achieve these objectives, evaluating the effectiveness of such efforts, and modifying those efforts based upon both internal and external performance evaluations.

### 1.1 Strategic

This month's **strategic planning** meetings focused on construction progress and related traffic controls. SJRA staff met a number of times with representatives from Montgomery County Commissioner Precinct 3 and Montgomery County Engineering to finalize plans and schedules for pipeline construction in The Woodlands, Oak Ridge North, Southern Montgomery County MUD, and Rayford Road MUD. Plans were also discussed related to visual and sound barriers around the water treatment plant site and access roadway.

### 1.2 Engineering and Construction

Planning issues related to engineering and construction that arose or were further acted upon this month included:

- Coordination continued this month with several private utility companies for **existing utility relocations** along the proposed surface water transmission system Segments T1, T2 and T3. The GRP Program Team will continue to work with these entities until agreements with these entities are finalized and the utilities in question are relocated.
- The proposed alignments of the surface water transmission lines involve many **easement encroachments and utility crossings** as well as **roadway crossings**. In August the GRP Program Team and respective transmission line design consultants continued to coordinate with governmental agencies, municipalities, private utility companies, and assorted pipeline compa-



**State Highway Loop 336  
@ Longmire Road  
(Segment C2)**

nies to gain approval for the necessary encroachments and crossings along with ascertaining any executed agreement or permit requirements. This effort will continue through final design.

- **Traffic control planning** during construction remained a focus for the GRP Program Team, Construction Management and Inspection (CM&I) consultant, and respective design consultants this month. Meetings with Montgomery County representatives were held on August 8 and 16, 2012 to further discuss traffic control in densely populated areas. As final design progresses into the construction phase, coordination on traffic control will continue with Montgomery County and other effected parties.
- The **Construction Communication Team (CCT)** continued to strategize communication methods during the construction phase. The CCT met on August 22, 2012, with a number of citizens from The Woodlands in attendance. An overview of the GRP Program projects, construction timeline, and general traffic control planning were covered.

### 1.3 Meetings


The GRP Program Team continued meeting with GRP Program stakeholders this month, in addition to its weekly GRP Program and GRP Project status meetings and monthly progress meetings with surface water transmission system and SWF design consultants. A listing of these meetings may be seen in attached Exhibit 10.

Meetings of special note that were led or attended by the GRP Program technical staff this month included the following:

- One (1) **Quality Assurance (QA) audit** of a design consultant was conducted this month. See Section 5.0 for more information.
- The GRP Program Team and CMAR met with representatives from the **TCEQ and TWDB** on August 1, 2012 to review the Early Work Package No. 3 for the SWF and provide documents for their review. Coordination with the TCEQ and TWDB for both construction and funding purposes will remain a focus for the GRP Program Team as SWF construction begins and transmission system construction draws near.

## 1.0 PLANNING (CONTINUED)

- Continuing coordination regarding construction activity near the dam, the GRP Program Team and CMAR met with **SJRA's Lake Conroe Division** on August 2, 2012 to discuss lake dredging spoils disposal areas within the SJRA Lake Conroe campus. Coordination between the Lake Conroe Division and GRP Program Team, CMAR and, as necessary, other GRP Program consultants will continue through final design and construction.
- **SWF construction services** coordination continued this month with the CMAR and GRP Program Team holding a “partnering” session on August 7, 2012 with the SWF design consultants, the Construction Administration and Inspection (CA&I) consultant and the SWF Construction Materials Testing (CMT) consultant. This effort will continue as SWF construction activity increases over the next few months.
- A coordination meeting with the **City of Oak Ridge North** was held on August 22, 2012 to discuss the design of the GRP Program’s facilities at Oak Ridge North’s water plant. The GRP Program Team and SWRF design consultant continued close coordination with the receiving facility owners and operators during final design of the connections to the receiving facilities.
 



**City of Oak Ridge North  
(Segment W3)**
- The monthly **northern Montgomery County GRP Program technical status meeting** was held on August 22, 2012 at the SJRA’s G&A Office. Representatives from MidSouth Synergy attended. Generally, discussion included the following:
  - \* Specific issues/comments related to the recommended alignments for the proposed GRP Program surface water transmission system C, T and (in general) W segments;
  - \* The status of land/easement acquisition associated with the proposed surface water transmission system in the Conroe area and along McCaleb Road/Fish Creek;
  - \* The status of design for GRP facilities within the City of Conroe water plant facilities proposed to receive surface water;
  - \* Updates to the anticipated surface water transmission system final design schedule; and
  - \* Public relations/public outreach efforts by the GRP Program/GRP Administrator and GRP Program technical staff
- The monthly **southern Montgomery County GRP Program technical status meeting** was held on August 23, 2012 at the SJRA’s Woodlands Office. Attendees included representatives from Montgomery County, The Woodlands Joint Powers Agency, and the Southern Montgomery County Municipal Utility District (SMCMUD). Generally, discussion included the following:
  - \* Specific issues/comments related to the recommended alignment for the proposed GRP Program surface water transmission system T and W segments;
  - \* The status of land/easement acquisition in The Woodlands and east of I-45;
  - \* Items related to the Tennessee Gas Pipeline corridor;
  - \* The status of design for GRP facilities within water plant facilities proposed to receive surface water;
  - \* Updates to the anticipated surface water transmission system final design schedule; and
  - \* Public relations/public outreach efforts by the GRP Program/GRP Administrator and GRP Program technical staff.

## 2.0 SCHEDULE

Currently, the GRP Program remains on schedule for the delivery of treated surface water to select Joint GRP Participants on or before January 1, 2016. A simplified GRP Program schedule may be found in attached Exhibit 1.

### 2.1 Engineering

This month saw the continuation of final design on the SWF, transmission line segments, and SWRF. The status of each GRP Program Consultant's Professional Services Agreement (contract) Work Order (phase and percent complete) is indicated in attached Exhibit 2.

Key schedule issues and updates related to GRP Program engineering activities include the following:

- **Surface water transmission system** final design continued in August with the submittal of 60% drawings for Segments C2, C3, T3, W1-A, W2-A, W3-B and W4 to the GRP Program Team for review. Review comments were provided to the respective consultants on 60% drawings for Segments T1, W1-A, W1-B and W3-B this month. The remaining 60% submittals and following 90% submittals are scheduled over the coming months.
- The **Surface Water Receiving Facilities (SWRF)** design consultant submitted 60% drawings to the GRP Program Team for review last month. Review was completed and comments were provided to the consultant this month. 90% drawings are scheduled to be submitted for review in October 2012.
- Final design of the **Surface Water Facilities (SWF)** progressed towards completion this month. 100% drawings and specifications on the High Service Pump Station (HSPS) and Raw Water Intake (RWI) have been submitted to the GRP Program Team. After receiving comments



**High Service Pump Station and Storage Facility (Digital Rendering)**

on the 60% drawings last month, the Surface Water Treatment Plant (SWTP) design consultant worked on 90% drawings this month.

- The 60% design submittal for the **fiber optic communication system** was received by the GRP Program Team on August 22, 2012 and is currently under review. The Program Fiber Optic Consultant continues to review and provide comments on the surface water transmission system drawing submittals for the conduit design for the fiber optic system.

### 2.2 Construction

Key issues and updates related to the schedules of GRP Program construction activities include:

- The **AquaTexas sanitary sewer and access road relocation** was completed this month and the new sanitary system has been placed into service. Substantial Completion was reached on August 8, 2012 and the Certificate of Final Completion was issued on August 23, 2012. The project was completed ahead of schedule and to the satisfaction of AquaTexas.
- Substantial Completion and Final Completion of the **fiber optic line to serve GRP Building No. 1** were achieved on August 6, 2012 and August 22, 2012, respectively. A change order deducting unused items from the construction contract and bringing the project in under the original bid price has been prepared for approval by the SJRA General Manager.
- Construction of **GRP Building No. 1** reached Substantial Completion on August 10, 2012, ahead of schedule. The contractor worked diligently to complete all outstanding items and Final Completion is expected in early September 2012. The GRP Program Team successfully moved into GRP Building No. 1 on August 16, 2012.
- **SWF temporary access road** construction was completed this month. The Certificate of Final Completion was issued on August 15, 2012. The project was completed ahead of schedule and under budget.

## 2.0 SCHEDULE (CONTINUED)

- The **Construction Manager-at-Risk (CMAR)** continued working with the SWF design consultants through final design and progressed on SWF construction activity. Notice to proceed for Early Work Package No. 2 was issued on August 2, 2012 and the project has been approved for construction and funding from the TWDB and TCEQ. Mobilization and early work related to the Raw Water Pump Station (RWPS), Ground Storage Tanks (GSTs), and HSPS have started (see Exhibit 12 for construction photos). The RFP for Early Work Package No. 3 was released this month (see Section 3.1 for more information). The CMAR is also working with the GRP Program Team and SWF design consultants to finalize the baseline schedule for the RWPS, GSTs, and HSPS, while continuing to develop the overall project schedule as the final design for the SWTP progresses.



**Raw Water Pump Station  
(Digital Rendering)**

- As final design of the surface water transmission lines progressed this month, the **Construction Management and Inspection (CM&I)** continued to coordinate with the GRP Program Team and respective design consultants on construction-related issues. A traffic control plan for The Woodlands area was prepared and presented to the GRP Program Team and Montgomery County representatives. Review of transmission line milestone submittals continued this month as did participation in GRP Program and Project progress meetings. The CM&I continued to maintain their master design and construction schedule and is working with the GRP Program Team to incorporate field photos into the GRP Program's Geographic Information System (GIS).
- The **Construction Administration and Inspection (CA&I)** consultant's services began early this month with its primary tasks being SWF construction inspection and administration of the CMAR contract. Currently four (4) CA&I consultant employees are working on site at GRP Building No. 1 as SWF final design concludes and construction begins.



## 3.0 PROCUREMENT

This month the GRP Program Team continued to develop required GRP Program and GRP Project scopes of work for design and consultation services, and construction contract packages. Current solicitations, contract negotiations and awards, and a look ahead are included in this section.

### 3.1 Solicitations

The GRP Program Team is developing, has made available, received bids/proposals/Statements of Qualifications (SOQs), and/or selected a firm for award on the following solicitations this month:

- **Early Work Package No. 3:** Advertisement of Early Work Package No. 3 began on August 2, 2012 and proposals will be received on September 13, 2012. The CMAR and GRP Program Team will review the proposals and intend to present work category recommendations and the associated amendment to the CMAR's contract to the GRP Review Committee and SJRA Board of Directors for consideration at their respective October 2012 meetings.

### 3.2 Contract Awards

The following GRP Program contracts/work orders were presented to the GRP Review Committee Meeting on August 20, 2012 and to the SJRA Board of Directors Meeting on August 23, 2012, and were authorized by the SJRA Board of Directors for execution by the SJRA General Manager:

- **Lockwood, Andrews & Newnam:** Work Order No. 6 for **metes & bounds** services for Surface Water Transmission System **Segment W1** (\$75,794.40).
- **Binkley & Barfield:** Work Order No. 5 for **metes & bounds** services for Surface Water Transmission System **Segment W2** (\$31,977.00).
- **Brown & Gay Engineers:** Work Order No. 7 for program management consulting services (\$1,865,560.00).
- **Andrews Kurth:** Engagement letter for continued legal representation and land appraisal support for land/easement acquisition (\$900,000.00).

### 3.3 Process and Procedures

There were no significant changes to the procurement process or procedures this month. The GRP Program continues to utilize traditional and alternative project delivery methods in the procurement of consultant and contractor services.

### 3.4 Look Ahead

The table below provides a very general look ahead at known and anticipated GRP Program professional services and construction contractor solicitations and contract awards. Solicitations may be combined, modified, or canceled and indicated dates or time frames may be modified as deemed necessary.

PROJECT/SERVICES	PURPOSE	ADVERTISEMENT/ NEGOTIATION	BOARD MEETING
METES & BOUNDS PREPARATION	METES & BOUNDS FOR EASEMENT ACQUISITION FOR TRANSMISSION SYSTEM SEGMENT W4	SEPTEMBER 2012; WORK ORDER	OCTOBER 11, 2012
METES & BOUNDS PREPARATION	AMENDMENT NO. 2 TO WORK ORDER NO. 2 FOR METES & BOUNDS FOR EASEMENT ACQUISITION FOR TRANSMISSION SYSTEM SEGMENT W2	SEPTEMBER 2012; WORK ORDER AMENDMENT	OCTOBER 11, 2012
PROFESSIONAL SERVICES	PROFESSIONAL SERVICES DURING FINAL DESIGN AND CONSTRUCTION	SEPTEMBER 2012; WORK ORDER	OCTOBER 11, 2012
SURFACE WATER TREATMENT PLANT FINAL DESIGN	AMENDMENT NO. 1 TO WORK ORDER NO. 13 FOR ALTERNATIVE PROCESS BLOWERS DESIGN	SEPTEMBER 2012; WORK ORDER AMENDMENT	OCTOBER 11, 2012
STAKING, RECORD DRAWINGS, SURVEY	STAKING, RECORD DRAWINGS AND OTHER SURVEY SERVICES FOR TRANSMISSION SYSTEM SEGMENT T1	SEPTEMBER 2012; WORK ORDER	OCTOBER 11, 2012





### 3.0 PROCUREMENT (CONTINUED)

TABLE 3.1—GRP PROGRAM LOOK AHEAD (CONTINUED)			
PROJECT/SERVICES	PURPOSE	ADVERTISEMENT/ NEGOTIATION	BOARD MEETING
ABSTRACTING AND TITLE RESEARCH	CONTINUED ABSTRACTING AND TITLE RESEARCH FOR LAND/EASEMENT ACQUISITION	SEPTEMBER 2012	OCTOBER 11, 2012
PROFESSIONAL SERVICES	AMENDMENT NO. 1 TO PSA FOR PROFESSIONAL LAND ACQUISITION SERVICES	SEPTEMBER 2012; PSA AMENDMENT	OCTOBER 11, 2012
TRANSMISSION SYSTEM FINAL DESIGN	AMENDMENT NO. 1 TO WORK ORDER NO. 4 FOR FINAL DESIGN OF TRANSMISSION SYSTEM SEGMENT W2	OCTOBER 2012; WORK ORDER AMENDMENT	NOVEMBER 8, 2012
SWF SITE ACCESS ROAD ASPHALT OVERLAY	CONSTRUCTION OF ASPHALT OVERLAY OF SWF SITE ACCESS ROAD	OCTOBER 2012; CSB PDM	NOVEMBER 8, 2012
STANDPIPE DESIGN	FINAL DESIGN OF STANDPIPE FOR TRANSMISSION SYSTEM	OCTOBER 2012; WORK ORDER	NOVEMBER 8, 2012
EARLY WORK PACKAGE NO. 3	AMENDMENT NO. 3 TO CMAR CONTRACT FOR EARLY WORK PACKAGE NO. 3 FOR SWF CONSTRUCTION	OCTOBER 2012; CONTRACT AMENDMENT	NOVEMBER 8, 2012
CONSTRUCTION MATERIALS TESTING (CMT)	CMT SERVICES FOR EARLY WORK PACKAGE NO. 3	OCTOBER 2012; WORK ORDER	NOVEMBER 8, 2012
SWTP CONSTRUCTION PHASE SERVICES	CONSTRUCTION PHASE SERVICES FOR THE SWTP	OCTOBER 2012; WORK ORDER	NOVEMBER 8, 2012
CORROSION PROTECTION CONSTRUCTION PHASE SERVICES	CONSTRUCTION PHASE SERVICES RELATED TO CORROSION PROTECTION	OCTOBER 2012; WORK ORDER	NOVEMBER 8, 2012
CONSTRUCTION MANAGEMENT & INSPECTION (CM&I)	CM&I SERVICES DURING CONSTRUCTION PHASE OF TRANSMISSION SYSTEM	NOVEMBER 2012; WORK ORDER	DECEMBER 13, 2012
CONSTRUCTION MATERIALS TESTING (CMT)	CMT SERVICES FOR TRANSMISSION SYSTEM	TBD; WORK ORDER	TBD



## 4.0 COST REPORT AND FINANCIAL CONSIDERATIONS

### 4.1 GRP Program and GRP Project CIP Budget(s)

Through this month, the GRP Program remains under its \$500,000,000.00 Capital Improvement Project (CIP) Program planning budget and forecasts continue to indicate it will be completed under budget (see also subsection 4.6 and Exhibit 7). A summary of the GRP Program's CIP budget and cost considerations as reported to the GRP Review Committee and the SJRA Board of Directors is provided as attached Exhibit 3.

A summary of the SJRA GRP Division's Fiscal Year 2012 (FY12) operating budget (revenue and expenditures) is provided as Exhibit 4. The proposed Fiscal Year 2013 operating budget and capital budget were presented to and approved by the GRP Review Committee and the SJRA Board of Directors at their respective August 2012 meetings.

The GRP Program is currently operating under the SJRA Board of Director's authorized CIP budget of \$347,400,358.49 (net - \$317,263,643.04). The funding available in the CIP budget allows the SJRA to secure all of the resources required to perform professional services, construction services, and procure long lead time equipment during the design phase of the GRP Program.

### 4.2 Financial Report

Funding sources presently applied towards the GRP Program CIP budget include the TWDB's Water Infrastructure Fund (WIF; \$21,500,000.00 [gross]; \$21,029,662.92 [net]), the sale of open market Special Project Revenue Bonds, Series 2011 (\$83,430,358.49 [gross]; \$73,522,352.58 [net]), and TWDB "D" Funds, Series 2011A (\$67,470,000.00 [gross]; \$61,552,571.67 [net]) and Series 2012 (\$175,000,000.00 [gross]; \$161,159,055.87 [net]). Approved funding to-date represents approximately 63.5% of the planned \$500,000,000.00 Program budget. The GRP Program's funding, contracted commitments, and forecasted expenditures are summarized in Table 4.1 and further detailed in attached Exhibits 5A, 5B and 6.

Please note that financial reports do not include investment income.

**TABLE 4.1 - GRP PROGRAM FUNDING AND CONTRACTED COMMITMENTS SUMMARY**

	PREVIOUS (THRU 7/31/12)	AUGUST 2012
<b>A. APPROVED FUNDING</b>	\$347,400,358.49	
<b>B. AVAILABLE FUNDING AFTER COSTS</b>	\$317,263,643.04	\$317,263,643.04
<b>C. APPROVED CONTRACTS</b>	\$110,627,729.75	\$8,591,016.13
<b>D. PROJECT CLOSE OUT</b>	\$499,123.94	\$25,447.12
<b>E. UNCONTRACTED FUNDING (B - C + D; B AUG - C - C AUG + D + D AUG)</b>	\$207,135,037.23	\$198,569,468.2
<b>F. INVOICED</b>	\$41,946,522.68	\$9,978,149.62
<b>G. REMAINING FUNDS (B - F; B - F - F AUG)</b>	\$275,317,120.36	\$265,338,970.74

### 4.3 Invoices/Applications for Payment

GRP Program level and GRP Project level consultant Invoices and/or construction contractor Applications for Payment received through September 10, 2012 are represented in the above table (Item F, Aug 2012). A detailed breakdown of consultant invoices and/or construction contractor pay applications received for services performed this month appears in Table 4.2.

**TABLE 4.2 - GRP PROGRAM CONSULTANT INVOICE AND CONTRACTOR PAY APPLICATION SUMMARY**

	PREVIOUS (THRU 7/31/12)	AUGUST 2012
<b>ENGINEERING &amp; SPECIALTY CONSULTANT (PROGRAM)</b>	\$10,173,511.02	\$1,591,136.63
<b>ENGINEERING &amp; SPECIALTY CONSULTANT (PROJECT)</b>	\$27,261,201.90	\$4,685,506.78
<b>CONSTRUCTION CONTRACTOR / CMAR</b>	\$4,511,809.76	\$3,701,506.21
<b>TOTALS:</b>	\$41,946,522.68	\$9,978,149.62

## 4.0 COST REPORT AND FINANCIAL CONSIDERATIONS (CONTINUED)

### 4.4 Contract Amendments and Change Orders

Three (3) change orders were executed by the SJRA General Manager this month. Further details on the amendment are included in Exhibit 11.

### 4.5 Claims

No claims were identified this month.

### 4.6 CIP Cash Flow

The GRP Program CIP cash flow through SJRA FY2015 reflects known expenditures through August 2012 and estimates for future expenditures were updated this month. All active and currently identified future GRP Program Projects and initiatives are included in the cash flow. A graph of forecasted monthly expenditures from the referenced cash flow is attached as Exhibit 7.



### 4.7 CIP Budget Estimates at Completion

#### **4.7.1 GRP Program**

The GRP Program Team is currently updating a comparison of in-place funding against contracted and identified near term GRP Program contracting needs (plus contingency).

The **total gross funds** (including capitalized interest) required to execute Phase I of the GRP Program are currently estimated at \$562,400,358.49.

#### **4.7.2 GRP Projects**

The GRP Program Projects remained within their approved contract budgets through this month. Exhibit 8 indicates each active GRP Program Project and GRP Program contract forecasted estimate at completion (EAC). Additionally, all current GRP Program contracts, including their respective SJRA Board of Directors approved budgeted amounts and percents complete, are listed in Exhibit 2.

### 4.8 Land Acquisition

August was a busy month for the GRP Program Team and its land acquisition consultants. Preparation of metes & bounds description for easements continued on all routes, with many descriptions already completed and parcels at different stages on the acquisition process. This month a total of fifteen (15) easements were acquired along Transmission System Segment T1, W1, and W3. A cumulative summary of easement acquisition activity is provided in attached Exhibit 9.

## 5.0 QUALITY ASSURANCE

### *Final Design*

This month's QA activity associated with final design deliverables produced by the engineering consultants is as follows:

1. **Schaumburg & Polk (C2)** - 60% drawings were submitted and are currently under review by the GRP Program Team.
2. **Kimley-Horn (C3)** - 60% drawings were submitted and are currently under review by the GRP Program Team.
3. **Jones & Carter (T1)** - GRP Program Team review of the 60% drawings was completed and comments were provided to the design consultant.
4. **Espey (T3)** - 60% drawings were submitted and are currently under review by the GRP Program Team.
5. **Lockwood, Andrews & Newnam (W1A)** - 60% drawings were submitted for review by the GRP Program Team. Review was completed and comments were provided to the design consultant.
6. **Lockwood, Andrews & Newnam (W1B)** - GRP Program Team review of the 60% drawings was completed and comments were provided to the design consultant.
7. **Binkley & Barfield (W2A)** - 60% drawings were submitted and are currently under review by the GRP Program Team.
8. **Cobb Fendley (W3B)** - 60% drawings were submitted for review by the GRP Program Team. Review was completed and comments were provided to the design consultant.
9. **LJA (W4)** - 60% drawings were submitted and are currently under review by the GRP Program Team.
10. **Malcolm-Pirnie/Arcadis (SWRF)** - GRP Program Team review of the 60% drawings was completed and comments were provided to the design consultant.
11. **EMA (Fiber Optic System)** - 60% drawings were submitted and are currently under review by the GRP Program Team.

12. **AECOM (HSPS and GSTs)** - 100% drawings and specifications were submitted.
13. **Freese and Nichols (RWI)** - 100% drawings and specifications were submitted.

As final design continues and milestone submittals are received, the GRP Program Team will review and provide comments, as applicable to each submittal. The review will be based on submittal compliance with the GRP Program's Design Standards and Criteria Manual, completeness per Program Management Plan (PMP) Section 14.0 – Quality Management and PMP Section 21.0 – Design Management, and general project understanding.

### *Quality Assurance (QA) Audits*

One (1) QA Audit of a design consultant was conducted this month by the GRP Program Team's QA Auditor: Dannenbuam (August 16, 2012). All scheduled audits of design consultants have been completed except for HDR, which is scheduled for October 9, 2012. The GRP Program Team may conduct a second QA Audit later in final design or during the construction phase to confirm continued compliance with GRP Program quality standards and requirements.

### *Pre-Construction*

The CM&I consultant and GRP Program Transmission System Construction Manager completed constructability reviews on the 60% drawings for Segments T1, W1A, W1B and W3B and began reviews on 60% drawings for Segments C2, C3, T3, W2A and W4. Constructability reviews will be performed on the remaining 60% drawings submittals as well as the forthcoming 90% drawings submittals

### *Construction*

The SJRA Construction Inspectors continue to perform quality assurance efforts on the active construction projects at or near the SWF site, including regular visits to the project site to monitor and document observed progress and confirm compliance with the construction contract. Similar quality assurance efforts will be performed once construction begins on the SWF, SWRF and surface water transmission system later this year.



## 6.0 EXHIBITS

Exhibit 1 - GRP Program Schedule

Exhibit 2 - Selected GRP Program Contracts

Exhibit 3 - Monthly GRP Program Financing Report

Exhibit 4 - GRP Unaudited Schedule of Revenues & Expenses - Actual & Budget and Clarification of Actual & Budget Variances

Exhibit 5A - GRP Program Capital Improvements Program Estimate-to-Complete

Exhibit 5B - GRP Program Fund Data

Exhibit 6 - Funding Source Summary

Exhibit 7 - GRP Monthly Forecasted Expenditures for Contracted Services

Exhibit 8 - Estimate at Completion (EAC) for Current Authorizations

Exhibit 9 - Land Acquisition Summary

Exhibit 10 - GRP Program Monthly Meeting Log

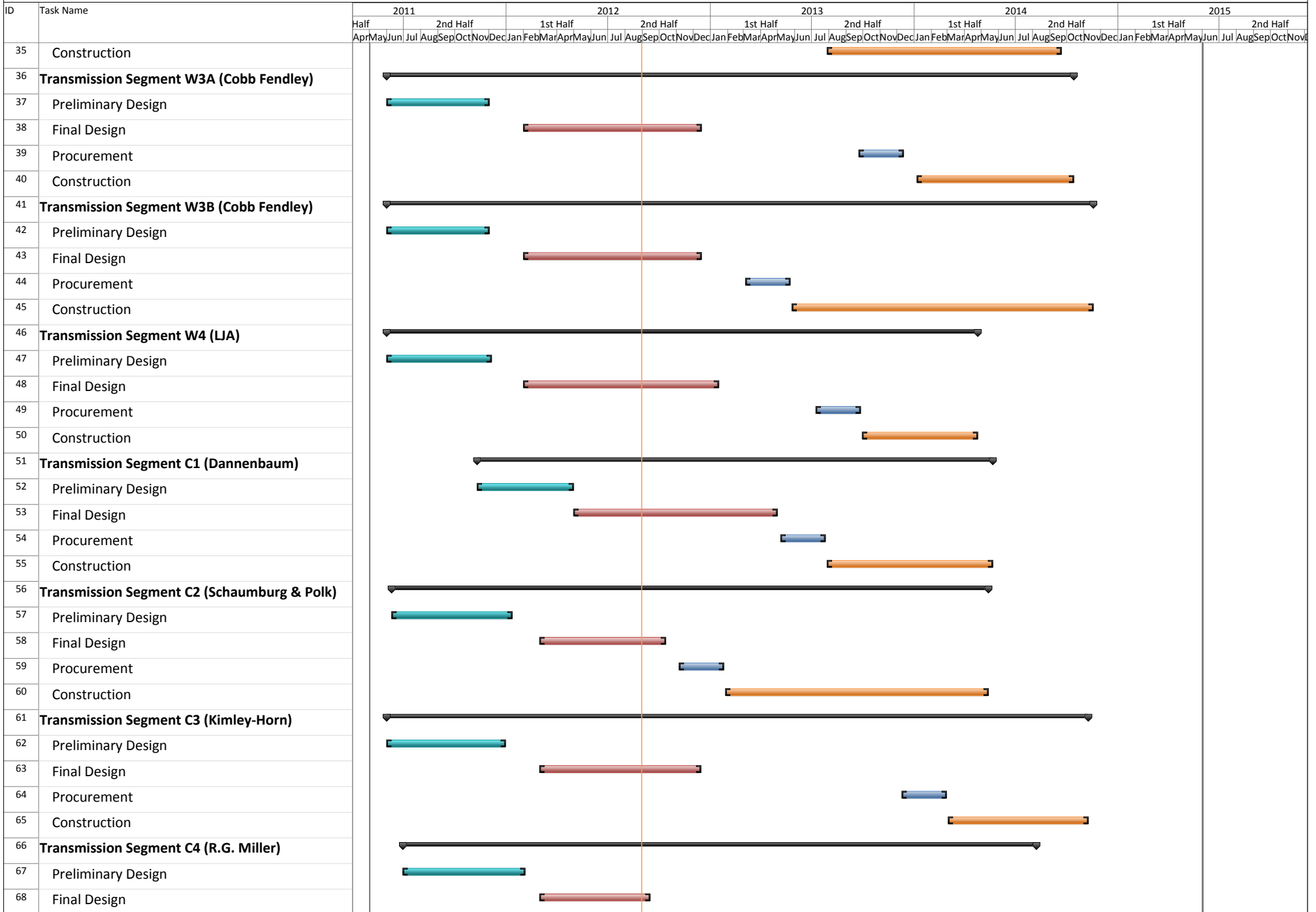
Exhibit 11 - GRP Amendments and Change Orders

Exhibit 12 - Construction Photos





# Exhibit 1 - GRP Program Schedule









## Exhibit 2

### Selected GRP Program Contracts

### August 31, 2012

GRP Program Projects - Design										
Engineering Consultant	Project Name	PER Fee	Percent Complete	Metes & Bounds Fee	Percent Complete	Final Design Fee	Percent Complete	CPS Fee	Percent Complete	Engineer's Construction Cost Estimate
Jones & Carter	Transmission Segment T1	\$ 923,031	100%	*		\$ 975,317	85%			\$ 17,601,600
Klotz	Transmission Segment T2	\$ 623,565	100%	\$ 170,848	85%	\$ 819,546	80%			\$ 21,622,080
Espey	Transmission Segment T3	\$ 553,123	100%	\$ 146,847	95%	\$ 855,184	83%			\$ 16,078,764
Lockwood, Andrews, Newnan	Transmission Segment W1	\$ 920,621	100%	\$ 172,484	98%	\$ 1,086,983	73%			\$ 19,872,293
Binkley & Barfield, Inc.	Transmission Segment W2	\$ 956,154	100%	\$ 31,977	0%	\$ 1,360,807	67%			\$ 20,882,091
Cobb Fendley	Transmission Segment W3	\$ 1,161,967	100%	\$ 535,228	70%	\$ 1,555,247	70%			\$ 18,477,973
LJA	Transmission Segment W4	\$ 364,730	100%	*		\$ 528,856	50%			\$ 6,716,718
Dannenbaum	Transmission Segment C1	\$ 332,300	100%	*		\$ 490,523	20%			\$ 7,250,868
Schaumburg & Polk	Transmission Segment C2	\$ 1,003,246	100%	\$ 309,980	60%	\$ 685,068	55%			\$ 9,622,636
Kimley-Horn	Transmission Segment C3	\$ 490,657	100%	\$ 159,740	55%	\$ 616,103	50%			\$ 7,781,434
R.G. Miller	Transmission Segment C4	\$ 217,507	100%	\$ 18,016	50%	\$ 281,449	82%			\$ 3,806,738
Malcolm Pirnie	Receiving Facilities	\$ 598,651	100%	*		\$ 1,209,451	55%			\$ 10,234,800

\*Metes and bounds efforts are included in the final design survey work order.



## Exhibit 2

### Selected GRP Program Contracts

### August 31, 2012

GRP Program Projects - Design										
Engineering Consultant	Project Name	PER Fee	Percent Complete	Metes & Bounds Fee	Percent Complete	Final Design Fee	Percent Complete	CPS Fee	Percent Complete	Engineer's Construction Cost Estimate
HDR, Inc.	Water Treatment Plant	\$ 3,079,273	99%			\$ 7,694,130	70%			\$ 135,000,000
AECOM, Inc.	High Service Pump Station	\$ 1,072,948	100%			\$ 2,047,461	65%	\$ 940,719.00	1%	\$ 39,960,000
Freeze and Nichols, Inc.	Raw Water Intake and Pump Station	\$ 1,138,540	100%			\$ 1,523,800	75%	\$ 810,800.00	1%	\$ 21,000,000
ACES	Access Rd. & San. Swr. Relocation; Temp. SWF Access Rd.					\$ 435,000	100%	\$ 50,000.00	58%	\$ 577,000; \$ 1,500,000
EMA, Inc.	Fiber Optic System	\$ 161,390	100%			\$ 279,899	60%			\$ 5,364,000
<b>TOTALS</b>		<b>\$ 13,597,703</b>	<b>-</b>	<b>\$ 1,545,120</b>	<b>-</b>	<b>\$ 22,444,824</b>	<b>-</b>	<b>\$ 1,801,519</b>	<b>-</b>	<b>\$ 363,348,994</b>



## Exhibit 2

### Selected GRP Program Contracts

#### August 31, 2012

GRP Program Consultant Contracts			
Engineering Consultant	Program Consultant Service	Total Fee of Work Orders	Percent Complete
Brown & Gay Engineers	Program Management	\$ 9,056,943	52%
Raba Kistner	Geotechnical	\$ 145,260	50%
LandTech	Survey	\$ 514,524	87%
Halff	Environmental	\$ 569,994	100%
Property Acquisition Services	Land Acquisition	\$ 1,413,335	30%
V&A	Cathodic Protection	\$ 511,978	44%
KDM	Land Acquisition	\$ 401,593	30%
Andrews Kurth	Legal	\$ 1,800,000	50%
Mike Bellar	Legal	\$ 100,000	23%
Brown & Caldwell	CMAR Contract Development Assistance	\$ 78,202	100%
Greenburg Traurig	Legal	\$ 200,000	47%
AECOM	Transient	\$ 311,400	100%
McCarthy	CMAR	\$ 42,874,840	29%
KBR	CM&I	\$ 533,433	46%
CDM	CA&I	\$ 5,348,633	0%
<b>Total</b>		<b>\$ 58,511,501</b>	



**Exhibit 2**  
**Selected GRP Program Contracts**  
**August 31, 2012**

GRP Program Projects - Construction			
Construction Project	Construction Contractor	Contract Amount	Percent Complete
GRP Building No. 1	Brookstone	\$ 2,008,673	99%
GRP Temporary Access Road	Lindsey Construction	\$ 977,584	100%
Aqua Texas Sanitary Sewer and Road Relocation	Randy Roan	\$ 525,756	100%
GRP Building No. 1 Fiber Line	Preferred Technologies	\$ 257,340	100%
<b>Total</b>		<b>\$ 3,769,352</b>	





## Exhibit 3

# Monthly GRP Program Financing Report

### Fiscal Year 2012

Through August 31, 2012

	WIF Funds	2011 Special Projects Revenue Bonds	TWDB 2011 'D' Fund	2012 Special Projects Revenue Bonds	Totals
<b>A. Program Budget</b>					
Bond Issue Amount	\$ 21,500,000.00	\$ 83,430,358.49	\$ 67,470,000.00	\$ 175,000,000.00	\$ 347,400,358.49
<b>Total Investment</b>	<b>\$ 21,500,000.00</b>	<b>\$ 83,430,358.49</b>	<b>\$ 67,470,000.00</b>	<b>\$ 175,000,000.00</b>	<b>\$ 347,400,358.49</b>
<b>B. Contracted Costs</b>					
Contracts Completed	\$ 11,071,454.50	\$ 1,489,604.42	\$ -	\$ -	\$ 12,561,058.92
Current Contract Values	\$ 9,939,687.34	\$ 46,862,082.53	\$ 17,065,727.35	\$ 32,528,047.00	\$ 106,395,544.22
Change Orders	\$ -	\$ 284,127.83			\$ 284,127.83
Project Close Out	\$ (197,419.17)	\$ (327,151.89)			\$ (524,571.06)
<b>Total</b>	<b>\$ 20,813,722.67</b>	<b>\$ 48,308,662.89</b>	<b>\$ 17,065,727.35</b>	<b>\$ 32,528,047.00</b>	<b>\$ 118,716,159.91</b>
<b>C. Expenditures</b>					
Paid Previous Fiscal Years	\$ 8,359,940.89	\$ 85,949.90	\$ -	\$ -	\$ 8,445,890.79
Paid Current Fiscal Year	\$ 11,606,071.92	\$ 24,863,134.47	\$ 478,705.50	\$ -	\$ 36,947,911.89
Issuance Costs	\$ 470,337.08	\$ 2,049,764.39	\$ 751,195.33	\$ 971,769.13	\$ 4,243,065.93
Capitalized Interest	\$ -	\$ 7,858,241.52	\$ 5,166,233.00	\$ 12,869,175.00	\$ 25,893,649.52
<b>Total</b>	<b>\$ 20,436,349.89</b>	<b>\$ 34,857,090.28</b>	<b>\$ 6,396,133.83</b>	<b>\$ 13,840,944.13</b>	<b>\$ 75,530,518.13</b>
<b>D. Remaining</b>					
Uncontracted Funds	\$ 215,940.25	\$ 25,213,689.69	\$ 44,486,844.32	\$ 128,631,008.87	\$ 198,547,483.13
Fund Balance *	\$ 1,063,650.11	\$ 48,573,268.21	\$ 61,073,866.17	\$ 161,159,055.87	\$ 271,869,840.36

\*Excluding net investment income

**Exhibit 4**  
**San Jacinto River Authority**  
**Groundwater Reduction Plan**  
**Unaudited Schedule of Revenues & Expenses - Actual & Budget**  
**For the Eleven Months Ending July 31, 2012**

	<u>July</u>			<u>Year To Date</u>			
	<u>Actual</u>	<u>Budget</u>	<u>Variance</u>	<u>Actual</u>	<u>Budget</u>	<u>Variance</u>	<u>Percentage Variance</u>
<b>OPERATING REVENUES</b>							
Water sales							
GRP pumping fees	\$ 1,400,589.95	\$ 1,097,408.25	\$ 303,181.70	\$ 13,157,889.73	\$ 12,649,643.50	\$ 508,246.23	4.02%
<b>TOTAL OPERATING REVENUES</b>	<b>1,400,589.95</b>	<b>1,097,408.25</b>	<b>303,181.70</b>	<b>13,157,889.73</b>	<b>12,649,643.50</b>	<b>508,246.23</b>	<b>4.02%</b>
<b>OPERATING EXPENSES</b>							
Payroll & employee benefit expenses	205,810.70	315,120.75	109,310.05	1,616,464.57	2,675,329.97	1,058,865.40	39.58%
Professional fees	14,005.79	18,922.00	4,916.21	25,907.34	531,542.00	505,634.66	95.13%
Purchased & contracted services	8,684.82	32,717.00	24,032.18	108,191.34	358,383.00	250,191.66	69.81%
Supplies, materials & utilities	11,812.13	17,788.75	5,976.62	1,757,900.16	2,420,035.25	662,135.09	27.36%
Maintenance repairs, parts & rentals	2,537.15	1,167.33	(1,369.82)	14,594.86	12,832.63	(1,762.23)	(13.73%)
General & administration	58,778.38	84,439.88	25,661.50	630,320.00	928,838.68	298,518.68	32.14%
<b>TOTAL OPERATING EXPENSES</b>	<b>301,628.97</b>	<b>470,155.71</b>	<b>168,526.74</b>	<b>4,153,378.27</b>	<b>6,926,961.53</b>	<b>2,773,583.26</b>	<b>40.04%</b>
<b>NON-OPERATING REVENUES &amp; EXPENSES</b>							
Income Investment	6,141.34	15,410.33	(9,268.99)	434,928.30	169,513.63	265,414.67	156.57%
Other revenues				1,474.16		1,474.16	
Depreciation	(3,594.22)		(3,594.22)	(37,351.98)		(37,351.98)	
Interest expense	(1,040,923.19)	(144,458.67)	(896,464.52)	(6,167,669.10)	(4,796,316.20)	(1,371,352.90)	(28.59%)
Amortized debt issuance expense	(14,139.83)		(14,139.83)	(113,113.89)		(113,113.89)	
<b>TOTAL NON-OPERATING</b>	<b>(1,052,515.90)</b>	<b>(129,048.34)</b>	<b>(923,467.56)</b>	<b>(5,881,732.51)</b>	<b>(4,626,802.57)</b>	<b>(1,254,929.94)</b>	<b>27.12%</b>
<b>NET INCOME (LOSS)</b>	<b>\$ 46,445.08</b>	<b>\$ 498,204.20</b>	<b>\$ (451,759.12)</b>	<b>\$ 3,122,778.95</b>	<b>\$ 1,095,879.40</b>	<b>\$ 2,026,899.55</b>	<b>184.96%</b>

**Exhibit 4**  
**GRP Division**  
**Clarification of Actual & Budget Variances**  
(in thousands)

Category	Driver	June 2012	July 2012	FYTD 2012
GRP Pumping Fees	Usage variance due to weather conditions.	466	303	508
Payroll and related expenses	Budgeted positions not filled per schedule.	89	109	1,059
	Legal expenses budgeted straight-line, fees billed on an annual basis.	10	3	362
Professional Fees	Staffing Services expenses less than budgeted, driven by positions not being filled as scheduled.	2	2	144
Purchased & Contracted Services	Recruiting expenses not incurred that were anticipated.	2	24	250
Supplies, Materials, Utilities, Maintenance, Repairs, Parts & Rentals	Additional Water Supply, costs not realized.	-	-	500
	Reservation Fees 2011 true-up	-	-	82
	Travel, fuel, office supplies, phones, utilities, and misc. expenses less than budgeted.	8	5	78
General & Administration	Allocated labor and related expenses less than budgeted, anticipated a quicker rate of growth than has been actualized.	(80)	26	299
Non-Operating	Bond interest expense, budget strategy adjusted for FY13	(893)	(923)	(1,255)
		<b>(395)</b>	<b>(452)</b>	<b>2,027</b>

## Exhibit 5A

### GRP Program Capital Improvements Program Estimate-At-Completion

SERVICES	ESTIMATE-AT-COMPLETION
<b>Pre-Engineering Phase Services</b>	<b>\$ 4,676,398</b>
(GRP Development, Environmental Studies, Pilot Plant, Surface Water Treatment Plant Site Survey)	
<b>Engineering Phase Services</b>	<b>\$ 40,737,620</b>
(Planning, Preliminary Engineering, Final Engineering, Geotechnical, Survey, Metes & Bounds, Subsurface Utility Investigation, Environmental)	
<b>Construction Phase Services</b>	<b>\$ 36,666,368</b>
(Early Equipment Procurement, Engineering Services During Construction, Construction Management & Inspection [Transmission System], Construction Administration & Inspection [SWF], Material Testing)	
<b>Construction</b>	<b>\$ 382,161,082</b>
(Surface Water Transmission System, Raw Water Intake and Pump Station, Surface Water Treatment Plant, High Service Pump Station and Ground Storage Tanks, Surfacewater Receiving Facilities, Infrastructure, Buildings, Roadways, Site Security, Access Roadways)	
Transmission Segment C1 - Construction	\$ 7,250,868
Transmission Segment C2 - Construction	\$ 9,622,636
Transmission Segment C3 - Construction	\$ 7,781,434
Transmission Segment C4 - Construction	\$ 3,806,738
Transmission Segment T1 - Construction	\$ 17,601,600
Transmission Segment T2 - Construction	\$ 21,622,080
Transmission Segment T3 - Construction	\$ 16,078,764
Transmission Segment W1 - Construction	\$ 19,872,293
Transmission Segment W2 - Construction	\$ 20,882,091
Transmission Segment W3 - Construction	\$ 18,477,973
Transmission Segment W4 - Construction	\$ 6,716,718
Receiving Facilities - Construction	\$ 10,234,800
SWF Work Package No. 2	\$ 32,528,047
SWF Work Package No. 3	\$ 62,672,059
SWF Work Package No. 4 (GMP)	\$ 85,453,101
Transmission System Fiber Optic - Construction	\$ 5,364,000
Permanent Access Roadway Construction	\$ 8,000,000
Building No. 1; Access Road; Vegetative Buffer; Construction Materials Testing; SWF Site Vegetation Management; Sanitary Sewer/Access Rd. Relocation <sup>(1)</sup>	\$ 4,433,909
Other Offsite Construction (Stand Pipe, Transmission Line Utility Relocations, Receiving Facility Improvements) <sup>(1)</sup>	\$ 9,865,000
Non-Project Specific Contingency	\$ 13,896,972
<b>Program Management</b>	<b>\$ 12,244,631</b>
(GRP Program Management, Survey, Geotechnical, Transient, Corrosion, Legal Consultants)	
<b>Land Acquisition</b>	<b>\$ 12,144,721</b>
(Legal, Appraisal, Title Research, Land Acquisition Consultants) <sup>(2)</sup>	
<b>Total:</b>	<b>\$ 488,630,820</b>

Bond issuance costs are not included.

<sup>(1)</sup> Costs other than transmission and surface water facilities now separated into two categories

<sup>(2)</sup> Includes revisions to land acquisition cost estimates and recategorizing of contingency.



## Exhibit 5B

### GRP Program Fund Data

October 8, 2012

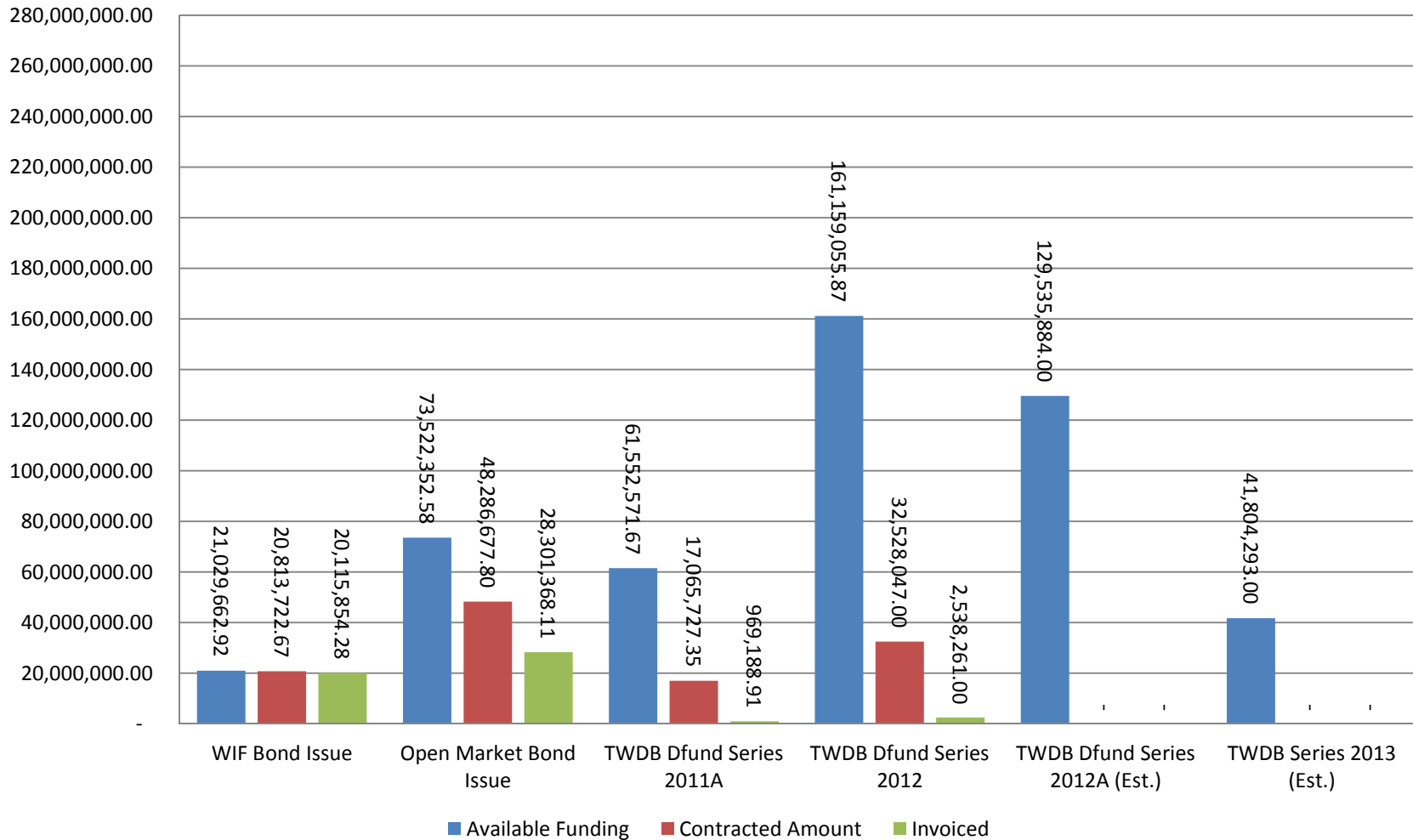
Funding Source	Amount Authorized by Board To-Date	Interest Rate	Bond Costs	Capitalized Interest	Debt Service Reserve Fund	Amount Currently Available	Pending Funding Source	Invoiced To-Date	Remaining Amount
WIF Bond Issue	\$ 21,500,000.00	.854% - 2.706%	\$ 470,337.08			\$ 21,029,662.92		\$ 20,115,854.28	\$ 913,808.64
Open Market Bond Issue	\$ 83,430,358.49	3% - 5.25%	\$ 2,049,764.39	\$ 7,858,241.52		\$ 73,522,352.58		\$ 28,301,368.11	\$ 45,220,984.47
TWDB Dfund Series 2011A	\$ 67,470,000.00	1.22% - 4.97%	\$ 751,195.33	\$ 5,166,233.00		\$ 61,552,571.67		\$ 969,188.91	\$ 61,552,571.67
TWDB Dfund Series 2012	\$ 175,000,000.00	1.17% - 4.62%	\$ 971,769.13	\$ 12,869,175.00		\$ 161,159,055.87		\$ 2,538,261.00	\$ 161,159,055.87
TWDB Dfund Series 2012A (Est.)	\$ 165,000,000.00	1.26% - 4.62%	\$ 961,910.00	\$ 14,139,669.00	\$ 20,362,537.00	\$ -	\$ 129,535,884.00	\$ -	\$ 129,535,884.00
TWDB Series 2013 WIF (Est.)	\$ 50,000,000.00	4.73%	\$ 679,500.00	\$ 4,358,678.00	\$ 3,130,529.00	\$ -	\$ 41,804,293.00	\$ -	\$ 41,804,293.00
<b>Totals</b>	<b>\$ 562,400,358.49</b>		<b>\$ 5,884,475.93</b>	<b>\$ 44,391,996.52</b>	<b>\$ 23,493,066.00</b>	<b>\$ 317,263,643.04</b>	<b>\$ 171,340,177.00</b>	<b>\$ 51,924,672.30</b>	<b>\$ 440,186,597.65</b>

Notes:

1. These value do not include investment income.
2. Red items are estimates only.
3. Series 2011 bond costs include \$681,132.45 for bond insurance and \$459,709.50 for underwriter's discount.
4. The Series 2012A Bonds are scheduled to be sold at SJRA's October 11, 2012 board meeting and the anticipated closing date is November 15, 2012.



## Exhibit 6 Funding Source Summary October 8, 2012







## Exhibit 7 GRP Program Monthly Forecasted Expenditures for Contracted Services October 8, 2012





## Exhibit 8

### Estimate at Completion (EAC) for Current Authorizations

### August 31, 2012

#### Surface Water Transmission System

Project	Firm	Amount Authorized by Board	Board Authorized Modifications		Forecasted Modification Amount	Estimate at Completion (EAC)
			Dollars	%		
T1	Jones & Carter	\$ 1,898,348.00		0.0%		\$ 1,898,348.00
T2	Klotz	\$ 1,613,958.55		0.0%		\$ 1,613,958.55
T3	Espey	\$ 1,555,154.42		0.0%		\$ 1,555,154.42
W1	LAN	\$ 2,180,088.40		0.0%		\$ 2,180,088.40
W2	Binkley & Barfield	\$ 2,348,938.04		0.0%		\$ 2,348,938.04
W3	Cobb Fendley	\$ 3,252,441.50		0.0%		\$ 3,252,441.50
W4	LJA	\$ 876,011.82	\$ 17,574.56	2.0%		\$ 893,586.38
C1	Dannenbaum	\$ 822,823.00		0.0%		\$ 822,823.00
C2	Schaumburg & Polk	\$ 1,790,745.97	\$ 207,547.98	11.6%		\$ 1,998,293.95
C3	Kimley-Horn	\$ 1,234,193.44	\$ 32,307.28	2.6%		\$ 1,266,500.72
C4	R.G. Miller	\$ 516,971.97		0.0%		\$ 516,971.97
WRFs	Malcolm Pirnie/Arcadis	\$ 1,808,102.00		0.0%		\$ 1,808,102.00
CM&I	KBR	\$ 533,432.62		0.0%		\$ 533,432.62
<b>Subtotal - Surface Water Transmission System</b>		<b>\$ 20,431,209.73</b>	<b>\$ 257,429.82</b>	<b>1.3%</b>	<b>\$ -</b>	<b>\$ 20,688,639.55</b>

#### Surface Water Facilities

Project	Firm	Amount Authorized by Board	Board Authorized Modifications		Forecasted Modification Amount	Estimate at Completion (EAC)
			Dollars	%		
WTP	HDR	\$ 13,524,601.22	\$ 271,719.00	2.0%		\$ 13,796,320.22
HSPS	AECOM	\$ 4,324,402.56		0.0%		\$ 4,324,402.56
RWI&PS	Freese and Nichols	\$ 3,742,761.35		0.0%		\$ 3,742,761.35
CMAR	McCarthy	\$ 42,874,840.00		0.0%		\$ 42,874,840.00
CA&I	CDM	\$ 5,348,633.00		0.0%		\$ 5,348,633.00
<b>Subtotal - Surface Water Facilities</b>		<b>\$ 69,815,238.13</b>	<b>\$ 271,719.00</b>	<b>0.4%</b>	<b>\$ -</b>	<b>\$ 70,086,957.13</b>



## Exhibit 8

### Estimate at Completion (EAC) for Current Authorizations

### August 31, 2012

#### Program Consultant Services & Other Projects

Project	Firm	Amount Authorized by Board	Board Authorized Modifications		Forecasted Modification Amount	Estimate at Completion (EAC)
			Dollars	%		
Prog Mgmt	Brown & Gay	\$ 9,056,943.21		0.0%		\$ 9,056,943.21
Prog Survey	Landtech	\$ 514,524.00		0.0%		\$ 514,524.00
Prog Geo	Raba Kistner	\$ 145,260.00		0.0%		\$ 145,260.00
Prog Tran	AECOM	\$ 161,400.00	\$ 150,000.00	92.9%		\$ 311,400.00
Access Rd	ACES	\$ 434,972.13		0.0%		\$ 434,972.13
Access Rd	S&V Survey	\$ 66,875.00		0.0%		\$ 66,875.00
Land Acq	KDM	\$ 359,887.70	\$ 41,705.00	11.6%		\$ 401,592.70
Land Acq	PAS	\$ 1,413,334.88		0.0%		\$ 1,413,334.88
Prog Env	Halff	\$ 526,862.58	\$ 43,131.52	8.2%		\$ 569,994.10
Prog Fiber	EMA	\$ 441,289.00		0.0%		\$ 441,289.00
Prog Corr	V&A	\$ 511,978.00		0.0%		\$ 511,978.00
Prog Svcs & Projs	Other Program Services & Projects	\$ 2,487,354.94		0.0%		\$ 2,487,354.94
<b>Subtotal - Program Consultant Services &amp; Other Projects</b>		<b>\$ 16,120,681.44</b>	<b>\$ 234,836.52</b>	<b>1.5%</b>	<b>\$ -</b>	<b>\$ 16,355,517.96</b>

#### Construction Contracts

Project	Firm	Amount Authorized by Board	Board Authorized Modifications		Forecasted Modification Amount	Estimate at Completion (EAC)
			Dollars	%		
GRP Bldg #1	Brookstone	\$ 2,009,900.00	\$ (5,424.00)	-0.3%		\$ 2,004,476.00
Bldg #1 CMT	Aviles	\$ 48,193.60		0.0%		\$ 48,193.60
Landscape Buffer	KeyScape	\$ 87,255.00		0.0%		\$ 87,255.00
Temp Access Road	Lindsey Construction	\$ 986,431.00	\$ (8,847.15)	-0.9%		\$ 977,583.85
Access Road CMT	Terracon Consultants	\$ 12,842.50		0.0%		\$ 12,842.50
Aqua Texas Sewer	Randy Roan	\$ 516,650.50	\$ 9,106.17	1.8%		\$ 525,756.67
Aqua Texas CMT	Aviles	\$ 31,057.20		0.0%		\$ 31,057.20
Bldg #1 Fiber Line	Preferred Technologies	\$ 257,339.65		0.0%		\$ 257,339.65
SWF EWP2 CMT	Geotest	\$ 740,985.00		0.0%		\$ 740,985.00
Other	Other Construction Contracts	\$ 30,934.32		0.0%		\$ 30,934.32
<b>Subtotal - Construction Contracts</b>		<b>\$ 4,721,588.77</b>	<b>\$ (5,164.98)</b>	<b>-0.1%</b>	<b>\$ -</b>	<b>\$ 4,716,423.79</b>

#### Totals

	Amount Authorized by Board	Board Authorized Modifications		Forecasted Modification Amount	Estimate at Completion (EAC)
		Dollars	%		
Subtotal - Surface Water Transmission System	\$ 20,431,209.73	\$ 257,429.82	1.3%	\$ -	\$ 20,688,639.55
Subtotal - Surface Water Facilities	\$ 69,815,238.13	\$ 271,719.00	0.4%	\$ -	\$ 70,086,957.13
Subtotal - Program Consultant Services & Other Projects	\$ 16,120,681.44	\$ 234,836.52	1.5%	\$ -	\$ 16,355,517.96
Subtotal - Construction Contracts	\$ 4,721,588.77	\$ (5,164.98)	-0.1%	\$ -	\$ 4,716,423.79
<b>Total</b>	<b>\$ 111,088,718.07</b>	<b>\$ 758,820.36</b>	<b>0.7%</b>	<b>\$ -</b>	<b>\$ 111,847,538.43</b>



## Exhibit 9 Land Acquisition Summary August 31, 2012

Project	Anticipated Number of Easements to Acquire	Easements Acquired This Month	Easements Acquired Total
Transmission System Segment T1	62	4	12
Transmission System Segment T2	2	0	0
Transmission System Segment T3	12	0	0
Transmission System Segment C1	18	0	0
Transmission System Segment C2	93	0	0
Transmission System Segment C3	34	0	0
Transmission System Segment C4	3	0	0
Transmission System Segment W1	32	1	1
Transmission System Segment W2	6	0	0
Transmission System Segment W3	204	10	10
Transmission System Segment W4	7	0	0
Totals:	473	15	23



## Exhibit 10 GRP Program Monthly Meeting Log August 31, 2012

Meeting	Agenda	Location	Date	Participants
CMAR Meeting with TCEQ and TWDB		TWDB Office	Wednesday August 1, 2012	McCarthy, TCEQ representatives, TWDB representatives, GRP Program Team staff
Dredging Spoils on Dam Site Discussion		SJRA Lake Conroe Office	Thursday August 2, 2012	SJRA Lake Conroe staff, McCarthy, GRP Program Team staff
Utility Coordination		TxDOT Conroe Office	Thursday August 2, 2012	TxDOT representatives, RG Miller, GRP Program Team staff
Traffic Management Plan Meetings		Various	8 total meetings in August, 2012	KBR, Binkley & Barfield, Cobb Fendley, External Stakeholders, GRP Program Team staff
GRP Building #1 Fiber Line Substantial Completion Walkthrough		Lake Conroe Dam	Monday August 6, 2012	Preferred Technologies, GRP Program Team staff
AECOM and FNI CMAR Workshop	Shop drawing procedures using SharePoint, addendum procedures	SJRA G&A Office	Tuesday August 7, 2012	AECOM, FNI, McCarthy, GRP Program Team staff
SWF Partnering Session		SJRA G&A Office	Tuesday August 7, 2012	HDR, AECOM, FNI, McCarthy, CDMsmith, Geotest, GRP Program Team staff
Specification Development Conference Call		Conference Call	Wednesday August 8, 2012	Arcadis, GRP Program Team staff



## Exhibit 10

### GRP Program Monthly Meeting Log

#### August 31, 2012

Meeting	Agenda	Location	Date	Participants
HDR CMAR Workshop 1	Status of TCEQ approval letters for plate settlers, GAC and GST TTHM stripping, chemical trend drain, noise levels from Blower Bldg and Pretreatment area, PALL membrane shop drawing approved and released for manufacture	SJRA G&A Office	Wednesday August 8, 2012	HDR, McCarthy, GRP Program Team staff
GRP Building 1 Substantial Completion Walkthrough		Onsite	Friday August 10, 2012	Brookstone, HDR, GRP Program Team staff
Entergy Line Coordination Meeting		Entergy Office	Monday August 13, 2012	Entergy representatives, GRP Program Team staff
Access Road Final Completion Walkthrough		Onsite	Wednesday August 15, 2012	Lindsey, ACES, GRP Program Team staff
C1 Quality Assurance Audit		Dannenbaum Office	Thursday August 16, 2012	Dannenbaum, GRP Program Team staff
GRP Program Review Committee Meeting		SJRA G&A Office	Monday August 20, 2012	Review Committee, GRP Program Team staff, general public
CMAR Pre-Construction Meeting		SJRA G&A Office	Tuesday August 21, 2012	TWDB representatives, McCarthy, FNI, AECOM, CDMSmith, Geotest, GRP Program Team staff





## Exhibit 10

### GRP Program Monthly Meeting Log

#### August 31, 2012

Meeting	Agenda	Location	Date	Participants
HDR CMAR Workshop 2	Solid wall along north property line, fire marshal response letter, alternate design for blower building for centrifugal blower in lieu of positive displacement blower	SJRA G&A Office	Wednesday August 22, 2012	HDR, McCarthy, GRP Program Team staff
Oak Ridge North Water Receiving Facilities Coordination Meeting		SJRA GRP Building #1	Wednesday August 22, 2012	Oak Ridge North representatives, Arcadis, GRP Program Team staff
Monthly Northern Montgomery County GRP Program Technical Status Meeting		SJRA G&A Office	Wednesday August 22, 2012	Joint GRP Participant representatives, GRP Program Team staff
Construction Communication Team		SJRA Woodlands Office	Wednesday August 22, 2012	KBR, External Stakeholders, GRP Program Team staff
AquaTexas Relocation Final Completion Walkthrough		Onsite	Thursday August 23, 2012	Randy Roan, ACES, Aqua Texas, GRP Program Team staff
Monthly Southern Montgomery County GRP Program Technical Status Meeting		SJRA Woodlands Office	Thursday August 23, 2012	Joint GRP Participant representatives, GRP Program Team staff



## Exhibit 10 GRP Program Monthly Meeting Log August 31, 2012

Meeting	Agenda	Location	Date	Participants
SJRA Board of Directors Meeting		SJRA G&A Office	Thursday August 23, 2012	SJRA Board of Directors, GRP Program Team staff, general public
C3/Conroe Park North Meeting		SJRA G&A Office	Wednesday August 29, 2012	ACES, GRP Program Team staff



## Exhibit 11

### GRP Amendments and Change Orders

### August 31, 2012

Project	Proposal Number	Modification Number	Description	Modification		Approval Date
				Amount	Days	
GRP Building No. 1	N/A	Brookstone Change Order Number 6	Furnish and install sixteen (16) additional smoke detectors per the Montgomery County Fire Marshall's request.	\$ 4,748	0	8/13/2012
GRP Temporary Access Road		Lindsey Construction Change Order Number 4	Credit for deletion of Bid Item 28 - 220 linear feet of hale bales. Installation of Traffic Control signage per RFP 03.	\$ 1,687		8/10/2012
GRP Aqua Texas Sanitary Sewer/Road Relocation		Randy Roan Construction Change Order Number 2	Generator Foundation	\$ 3,024		8/13/2012



## Exhibit 12 Construction Photos August 2012



August 8, 2012 – CMAR trailers @ SWF site ready for installation



August 21, 2012 – Installation of construction site signs @ SWF site entrance



August 21, 2012 – Telephone pole relocation @ SWF site entrance



August 21, 2012 – Crane delivery





## Exhibit 12 Construction Photos August 2012



August 21, 2012 – Crane delivery



August 23, 2012 – Crane assembly



August 22, 2012 – Crane delivery



August 27, 2012 – Crane assembly complete



## Exhibit 12 Construction Photos August 2012



August 30, 2012 – Entrance guard house parking construction



August 30, 2012 – Bulkhead construction @ west end of dam



August 30, 2012 – Bulkhead construction @ west end of dam



August 30, 2012 – Bulkhead construction @ west end of dam