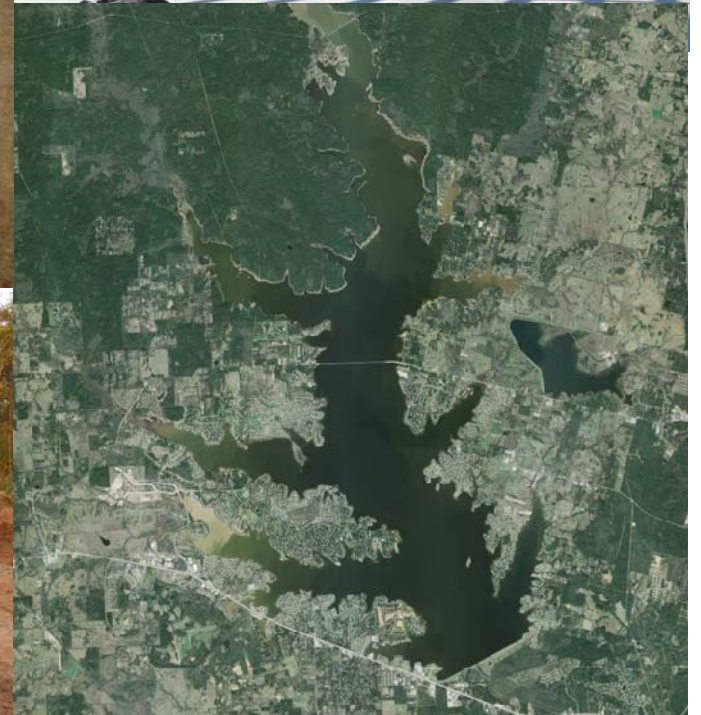




# Groundwater Reduction Plan Program Monthly Progress Report - April 2012

San Jacinto River Authority





## TABLE OF CONTENTS

<b>Table of Contents</b>	<b>i</b>	4.5 Claims	4-2
<b>Acronyms and Definitions</b>	<b>ii</b>	4.6 CIP Cash Flow	4-2
<b>1.0 Planning</b>	<b>1-1</b>	4.7 CIP Budget Estimates at Completion	4-2
1.1 Strategic	1-1	4.8 Land Acquisition	4-2
1.2 Engineering and Construction	1-1	<b>5.0 Quality Assurance</b>	<b>5-1</b>
1.3 Meetings	1-1	<b>6.0 Exhibits</b>	<b>6-1</b>
<b>2.0 Schedule</b>	<b>2-1</b>		
2.1 Engineering	2-1		
2.2 Construction	2-2		
<b>3.0 Procurement</b>	<b>3-1</b>		
3.1 Solicitations	3-1		
3.2 Contract Awards	3-1		
3.3 Process and Procedures	3-1		
3.4 Look Ahead	3-1		
<b>4.0 Cost Report and Financial Considerations</b>	<b>4-1</b>		
4.1 GRP Program and GRP Project CIP Budget(s)	4-1		
4.2 Financial Report	4-1		
4.3 Invoices/Applications for Payment	4-1		
4.4 Contract Amendments and Change Orders	4-2		



## ACRONYMS AND DEFINITIONS

### Acronyms

CA&I	Construction Administration and Inspection
CM&I	Construction Management and Inspection
CMAR	Construction Manager at Risk
CSB/P	Competitive Sealed Bid/Proposal
EA	Environmental Assessment
GRP	Groundwater Reduction Plan
GST	Ground Storage Tank
HSPS	High Service Pump Station
LSGCD	Lone Star Groundwater Conservation District
LVGU	Large Volume Groundwater User
PER	Preliminary Engineering Report
RFB / Q / P	Request for Bids / Qualifications / Proposals
RWI	Raw Water Intake
SJRA	San Jacinto River Authority
SOQ	Statement of Qualifications
SWF	Surface Water Facilities (SWTP, HSPS and RWI)
SWTP	Surface Water Treatment Plant
TCEQ	Texas Commission on Environmental Quality
TWDB	Texas Water Development Board
SWRF	Surface Water Receiving Facility
WIF	Water Infrastructure Fund

### Definitions

GROUNDWATER REDUCTION PLAN (GRP)	The document developed and filed with the LSGCD indicating SJRA's plan to reduce the permitted 2009 groundwater pumpage of its GRP Participants by 30%. The GRP is administered by the SJRA, including any supplements, revisions, or amendments.
----------------------------------	---

GRP PROGRAM TEAM	SJRA staff, Program Management Consultant (Brown & Gay Engineers, Inc.) staff, and technical consultants working interdependently toward meeting the goals of the Groundwater Reduction Plan.
GRP ADMINISTRATOR	The SJRA General Manager's designee who administers the SJRA Groundwater Reduction Plan and GRP Contract
GRP CONTRACT	Contract between the SJRA and a Participant to be included in the SJRA's efforts to meet the surface water conversion
JOINT GRP	GRP which is prepared to include (takes into account) LVGUs who have executed a GRP Contract with the SJRA to join the SJRA's GRP. Contracted LVGUs obtain LSGCD groundwater reduction regulation compliance through the SJRA's Joint GRP without preparing and submitting a GRP.
LARGE VOLUME GROUNDWATER USER(S) (LVGU)	Any person or entity that, through a single well or a combination of wells, actually produces or is authorized by permit(s) issued by the LSGCD to produce 10 million gallons or more of groundwater annually on or after January 01, 2008.
PARTICIPANT(S)	Regulated User(s) that enters into and remains subject to a written agreement with the SJRA to be included in the SJRA's GRP and includes the legal successors or assigns of Participant(s).
REGULATED USER(S)	Any public or private entity or person that is or becomes subject to the District Regulatory Plan established by the LSGCD and includes any amendments, revisions or supplements thereto as may be adopted by the LSGCD.
SJRA GRP DIVISION	Division of the SJRA responsible for GRP compliance, and the management, administration, operation and maintenance of the surface water facilities and surface water transmission system.
SJRA EXECUTIVE MANAGEMENT	Includes SJRA's General Manager, Deputy General Manager - Operations and Deputy General Manager - Administration.

## 1.0 PLANNING

The GRP Program Team meets regularly for the purposes of setting performance expectations and goals of the GRP Program, identifying the efforts required to achieving these objectives, evaluating the effectiveness of such efforts, and modifying those efforts based upon both internal and external performance evaluations.

### 1.1 Strategic

GRP Program Team staff continued **strategic planning** efforts this month. Focus remained on construction phase coordination and communication, including the recent development of the “Construction Communications Team” (CCT). Public outreach to Montgomery County community leaders continued to be a focus, while planning for a ground-breaking ceremony for the Surface Water Facilities (SWF) began. For more information on this month’s CCT meeting, see subsection 1.3.

### 1.2 Engineering and Construction

Representative planning efforts related to engineering and construction that arose or were further acted upon this month included:

- The GRP Program Team continued to work with the Program Environmental Consultant and Program Fiber Optic Consultant on the **development and finalization of design criteria** this month. Design guidelines for the fiber optic conduit system were finalized and distributed for use by the surface water transmission line design consultants on April 25, 2012. Tree survey and preservation guidelines were reviewed and commented on by the GRP Program Team, and are anticipated to be finalized and distributed to the design consultants in early May 2012.
- Preliminary water sample test results from Water Well No. 39 in The Woodlands from the **Catahoula Aquifer** were presented by the well design consultant (LBG-Guyton) to the GRP Review Committee and the SJRA Board of Directors at their respective April 2012 meetings. The United States Geological Service’s (USGS) sample testing is still underway. The GRP Program Team’s evaluation of the aquifer as a potential alternative water source for future phases of the GRP Program will rely significantly on the testing results.

- In early April 2012, the GRP Division sent memorandums to the **GRP Participants** planned to receive surface water in the 2016 transmission system, requesting their confirmation of any **infrastructure improvements** to their receiving facilities or external systems. Responses were received from several GRP Participants and are anticipated soon from the others. As necessary, the GRP Division will take into consideration any formal requests from the GRP Participants to the GRP Division for assistance designing, constructing, and/or funding any necessary infrastructure improvements identified.

### 1.3 Meetings

The GRP Program Team continued meeting with GRP Program stakeholders this month, in addition to its weekly GRP Program and GRP Project status meetings and monthly progress meetings with surface water transmission system and SWF design consultants. A listing of these meetings may be seen in attached Exhibit 10.



Meetings of special note that were led or attended by the GRP Program technical staff this month included the following:

- GRP Program Team staff met with representatives from **The Woodlands Development Company** (TWDC) on April 11, 2012 to discuss the anticipated **easements** that will need to be acquired for the surface water transmission system within The Woodlands. Discussion included identifying right-of-way (ROW) ownership along the proposed transmission system route. The TWDC requested and the GRP Program Team provided cross-section exhibits for the proposed surface waterline along Research Forest Drive and Grogans Mill Road depicting the waterline’s location relative to the ROW and existing features.
- The GRP Administrator, GRP Program Team and Surface Water Receiving Facilities (SWRF) design consultant continue to coordinate with **receiving facilities** owners and operators regarding the required

## 1.0 PLANNING (CONTINUED)

GRP Program facilities and surface water transmission line connections at their water plant sites. This month, meetings were held with Oak Ridge North (April 23, 2012) and Mid-South Synergy (April 27, 2012) to further develop plans for the proposed GRP Program facilities at their sites.

- The **Construction Communications Team (CCT)** met on April 25, 2012, at the SJRA's Woodlands Office. The CCT further developed the plan for communications and public outreach during the construction phase of the GRP Program SWF and transmission system. The CCT currently plans to meet every other month through final design and will then meet monthly during construction to plan and coordinate GRP Program communications with interested parties. The CCT represents a diverse group of Montgomery County stakeholders and has provided valuable input on communication tools and strategies.
- The monthly **northern Montgomery County GRP Program technical status meeting** was held on April 25, 2012 at the SJRA's G&A Office. Representatives from the City of Conroe attended. Generally, discussion included the following:
  1. Specific issues/comments related to the recommended alignments for the proposed GRP Program surface water transmission system C-1, C-2, C-3, C-4, T-1 and T-2 segments;
  2. The status of land/easement acquisition associated with the proposed surface water transmission system in the Conroe area;
  3. The status of design of GRP facilities within the City of Conroe water plant facilities proposed to receive surface water;
  4. Updates to the anticipated surface water transmission system final design schedule; and
  5. Public relations/public outreach efforts by the GRP Program/GRP Administrator and GRP Program Technical Staff.
- The monthly **southern Montgomery County GRP Program technical status meeting** was held on April 26, 2012 at the SJRA's Woodlands Office. Attendees included representatives from the Southern Montgomery County Municipal Utility District (SMCMUD), The Woodlands Township, Montgomery County, and The Woodlands Development Company. Generally, discussion included the following:
  1. Specific issues/comments related to the recommended alignment for the proposed GRP Program surface water transmission system T-2, T-3, W-1, W-2, W-3 and W-4 segments;
  2. Coordination of the specific alignment configuration along the T-3 design segment route north of FM 1488;
  3. Coordination of specific alignment configuration along the alternative route to Oak Ridge North also serving SMCMUD;
  4. The status of design of GRP facilities within water plant facilities proposed to receive surface water;
  5. Updates to the anticipated surface water transmission system final design schedule; and
  6. Public relations/public outreach efforts by the GRP Program/GRP Administrator and GRP Program Technical Staff.

## 2.0 SCHEDULE

Currently, the GRP Program remains on schedule for the delivery of treated surface water to select Joint GRP Participants on or before January 1, 2016. A simplified GRP Program schedule may be found in attached Exhibit 1.

### 2.1 Engineering

Final design work orders for ten (10) of the eleven (11) surface water transmission system design segments, the surface water receiving facilities and all three (3) of the surface water facilities are underway. The status of each GRP Program consultant's professional service agreement (contract) work order (phase and percent complete) is indicated in attached Exhibit 2.

Key schedule issues and updates related to GRP Program engineering activities include the following:

- Many of the **surface water transmission system** design consultants continued final design efforts on their respective projects this month, including final geotechnical and subsurface utility engineering (SUE) investigations. The first 60% drawings (segment T-1) were submitted this month, and submittals of 60% drawings for the other segments (except C-1) are anticipated over the next few months. Preliminary engineering on Segment C-1 moved closer to completion with the submittal of the draft Preliminary Engineering Report (PER) and 30% drawings early this month. The GRP Program Team reviewed and provided comments on the draft submittals, and the design consultant revised and provided a final PER on April 30, 2012.



- Preliminary engineering for the **Surface Water Receiving Facilities (SWRF)** moved closer to completion this month as the SWRF design consultant worked on addressing comments provided at the PER presentation held in late March 2012 and comments on proposed SWRF site layouts. Notice to Proceed for final design services was issued to the SWRF design consultant on April 2, 2012. The SWRF design consultant has begun early final design work and will continue coordination with the surface water transmission system design consultants and receiving facility owners and operators as the move forward.
- **Surface Water Facilities (SWF)** final design continued this month with the GRP Program Team and CMAR reviewing and providing comment on the Raw Water Intake (RWI) and High Service Pump Station (HSPS) 60% drawings submittals. Both projects have the 90% drawings submittal milestone scheduled for early June 2012. Surface Water Treatment Plant (SWTP) 60% drawings are anticipated in late June 2012. The SWF consultants will continue coordination with the GRP Program Team, CMAR and other GRP Program and Project consultants as they continue final design efforts.
- This month the GRP Program Team began receiving comments from the surface water transmission system design consultants on the draft **master guide technical specifications** distributed for review and comment in February 2012. All comments are due by May 14, 2012. Comments received will be compiled, reviewed and considered by the GRP Program Team, and the technical specifications will be revised accordingly and finalized. The GRP Program Team continued its efforts this month in standardizing **construction contract front-end documents** for the transmission system, SWRF and SWF construction projects.
- The **final Environmental Assessment (EA)** was submitted to the TWDB on April 5, 2012 for review and approval. TWDB review is anticipated to be completed by mid-May 2012. TWDB approval of the final EA is required for construction of Phase I of the GRP Program and release of escrowed funds from the TWDB Series 2011 "A" Bond Issue for use by the GRP Program for land acquisition.



## 2.0 SCHEDULE (CONTINUED)

### 2.2 Construction

Key issues and updates related to the schedules of GRP Program construction activities include:

- At its April 26, 2012 meeting, the SJRA Board of Directors approved award of a construction contract to Randy Roan Construction, Inc. for the proposed **relocation of an existing AquaTexas sanitary sewer and access roadway** across the far east side of the SWF site. For more information, see Section 3.1 and 3.2 of this report.
- Competitive bids for the construction of the proposed **fiber optic line to serve GRP Building No. 1** were received this month. See Section 3.1 of this report for more information.
- Construction of **GRP Building No. 1** progressed well in the month of April. The building foundation was completed, structural steel was delivered and installed, and both permanent water and electrical utilities connections have been completed and are now active. The contractor is beginning to "dry-in" the building and will start the interior build-out soon thereafter. Construction is currently ahead of schedule and below the original budget.
- Progress continued this month on construction of the **SWF temporary access road**. The contractor is approximately 50% complete with the clearing and grubbing activities and has started pavement subgrade preparation. Previously identified wetland areas were successfully mitigated, allowing for the removal of the wooden mats in those areas. This successful mitigation led to a change order decreasing the contract amount (see subsection 4.4 and Exhibit 11 for more information). The project is currently on schedule and is anticipated to be completed on or ahead of schedule.
- The **Construction Manager-at-Risk (CMAR)** continued working with the SWF design consultants on final design this month. The 30% cost model for the SWTP was completed this month, giving the GRP Program Team a complete 30% cost model for the SWF. The complete SWF 30% cost model verified the Project Value Analysis Trend Log continued to progress accurately and that at the 30% design mile-

stone, construction costs are estimated approximately \$2,000,000 under budget. A constructability review of the HSPS 60% drawings was also completed this month. Bid documents for Early Work Package No. 2, which includes site and concrete work for the HSPS, GSTs, and RWI, were completed and advertisement for bids began in this month as well. For more information on the Early Work Package No. 2 solicitation, see subsection 3.1.

Photographs of construction activity this month are included in Exhibit 12.

## 3.0 PROCUREMENT

This month the GRP Program Team continued to develop required GRP Program and GRP Project scopes of work for design and consultation services as well as construction contract packages. Current solicitations, contract negotiations, contract awards and a look ahead are included in this section.

### 3.1 Solicitations

The GRP Program Team has developed and made available, received bids/proposals/Statements of Qualifications (SOQs), and/or selected a firm for award on the following solicitations this month:

- **AquaTexas Sanitary Sewer and Access Road Relocation:** Six (6) competitive bids were received and opened on March 28, 2012, and Randy Roan Construction, Inc. submitted the apparent low bid of \$516,650.50. The GRP Program Team reviewed the bids and recommended contract award to Randy Roan Construction, Inc. to the SJRA General Manager, GRP Review Committee and the SJRA Board of Directors. The SJRA Board of Directors considered the recommendation and awarded the construction contract to Randy Roan Construction, Inc. at its April 26, 2012 meeting.
- **GRP Building No. 1 Fiber Optic Line:** Seven (7) competitive bids were received and opened on April 26, 2012. The bids were tabulated and Preferred Technologies submitted the apparent low bid of \$257,339.65. The GRP Program Team reviewed the bids and intends to make a recommendation of award to the SJRA General Manager, GRP Review Committee and the SJRA Board of Directors for consideration at their May 2012 meetings.
- **Construction Administration and Inspection (CA&I):** An RFQ for CA&I services related to the SWF construction was released on April 3, 2012, and eight (8) SOQs were received on April 19, 2012. The GRP Program Team is currently reviewing the SOQs submitted, intending to recommend to the SJRA General Manager entering into contract negotiations with the selected firm and presenting a PSA and work order to the GRP Review Committee and the SJRA Board of Directors for consideration at their June 2012 meetings.

### 3.2 Contract Awards

The following GRP Program contracts/work orders were taken to the April 23, 2012 GRP Review Committee and April 26, 2012 SJRA Board of Directors Meeting, and were authorized by the SJRA Board of Directors for execution by the SJRA General Manager:

- **Randy Roan Construction, Inc.:** Construction contract for the **relocation of the AquaTexas access road and sanitary sewer** at the SWF site (\$516,650.50).
- **Aviles Engineering Corporation:** Work Order No. 2 provides for **construction material testing (CMT)** services for the relocation of the AquaTexas access road and sanitary sewer at the SWF site (\$31,057.20).



### 3.3 Process and Procedures

There were no significant changes to the procurement process or procedures this month. The GRP Program continues to utilize traditional and alternative project delivery methods in the procurement of consultant and contractor services.

### 3.4 Look Ahead

The table on the following page provides a very general look ahead at known and anticipated GRP Program professional services and construction contractor solicitations and contract awards. Solicitations may be combined, modified, or canceled and indicated dates or time frames may be modified as deemed necessary.





### 3.0 PROCUREMENT (CONTINUED)

<b>TABLE 3.1—GRP PROGRAM LOOK AHEAD</b>			
<b>PROJECT/ SERVICES</b>	<b>PURPOSE</b>	<b>ADVERTISE- MENT/ NEGOTIATION</b>	<b>BOARD MEETING</b>
<b>TRANSMISSION SYSTEM FINAL DESIGN</b>	FINAL DESIGN SERVICES FOR TRANSMISSION SYSTEM SEGMENT C-1	APRIL 2012; WORK ORDERS	MAY 24, 2012
<b>GRP BUILDING NO. 1 FIBER OPTIC LINE</b>	CONSTRUCTION OF FIBER OPTIC LINE TO SERVE GRP BUILDING NO. 1	MARCH 2012; CSB PDM	MAY 24, 2012
<b>CONSTRUCTION ADMINISTRATION AND INSPECTION (CA&amp;I)</b>	OWNER'S REPRESENTATIVE FOR SWF CONSTRUCTION	APRIL 2012; RFQ	JUNE 28, 2012
<b>PROPOSAL PACKAGE #2 - EARLY WORK PACKAGE</b>	SITE AND CONCRETE WORK FOR THE HSPTS, GSTS, AND RWI	MAY 2012; RFP	JULY 26, 2012
<b>CONSTRUCTION MATERIALS TESTING (CMT)</b>	CMT SERVICES FOR TRANSMISSION SYSTEM AND SWF	MAY 2012; RFQ	JULY 26, 2012
<b>CONSTRUCTION MANAGEMENT &amp; INSPECTION (CM&amp;I)</b>	CM&I SERVICES DURING CONSTRUCTION PHASE OF TRANSMISSION SYSTEM	JUNE 2012; WORK ORDER	JULY 26, 2012



## 4.0 COST REPORT AND FINANCIAL CONSIDERATIONS

### 4.1 GRP Program and GRP Project CIP Budget(s)

Through this month, the GRP Program remains under its \$500,000,000.00 Capital Improvement Project (CIP) (Program) planning budget and forecasts continue to indicate it will be completed under budget (see also subsection 4.6 and Exhibit 7). A summary of the GRP Program's CIP budget and cost considerations as reported to the GRP Review Committee and the SJRA Board of Directors is provided as attached Exhibit 3.

A summary of the SJRA GRP Division's Fiscal Year 2012 (FY12) operating budget (revenue and expenditures) is provided as Exhibit 4. The budget includes all normal and customary expenses for operating a utility based, non-profit business, including debt service, and is developed annually for approval by the SJRA Board of Directors.

The GRP Program is currently operating under the SJRA Board of Director's authorized CIP budget of \$172,400,358.49 (net - \$156,104,587.17). The funding available in the CIP budget allows the SJRA to secure all of the resources required to perform professional services, non-professional services, and procure long lead time equipment during the design phase of the GRP Program.

### 4.2 Financial Report

Funding sources presently applied towards the GRP Program CIP budget include the TWDB's Water Infrastructure Fund (WIF; \$21,500,000.00 [gross]; \$21,029,662.92 [net]), the sale of open market Special Project Revenue Bonds, Series 2011 (\$83,430,358.49 [gross]; \$73,522,352.58 [net]) and TWDB "D" Funds (\$67,470,000.00 [gross]; \$61,552,571.67 [net]). Approved funding to-date represents approximately 31.2% of the \$500,000,000.00 planning budget. The GRP Program's funding, contracted commitments, and forecasted expenditures are summarized in Table 4.1 and further detailed in attached Exhibits 5A, 5B and 6.

Please note that financial reports do not include investment income.

**TABLE 4.1—GRP PROGRAM FUNDING AND CONTRACTED COMMITMENTS SUMMARY**

	PREVIOUS (THRU 3/31/12)	APRIL 2012
<b>A. APPROVED FUNDING</b>	\$172,400,358.49	\$0.00
<b>B. AVAILABLE FUNDING AFTER COSTS</b>	\$156,104,587.17	\$156,104,587.17
<b>C. APPROVED CONTRACTS</b>	\$68,219,249.91	\$833,331.83
<b>D. UNCONTRACTED FUNDING (B-C; B-C-C APRIL)</b>	\$87,885,337.26	\$87,052,005.43
<b>E. INVOICED</b>	\$25,153,799.13	\$2,367,395.69
<b>F. REMAINING FUNDS (B-E; B-E-E APRIL)</b>	\$130,950,788.04	\$128,583,392.35

### 4.3 Invoices/Applications for Payment

GRP Program level and GRP Project level consultant Invoices and/or construction contractor Applications for Payment received through May 10, 2012 are represented in the above table (Item E, April 2012). A detailed breakdown of consultant invoices and/or construction contractor pay applications received for services performed this month appears in Table 4.2.

**TABLE 4.2—GRP PROGRAM CONSULTANT INVOICE AND CONTRACTOR PAY APPLICATION SUMMARY**

	PREVIOUS (THRU 3/31/12)	APRIL 2012
<b>ENGINEERING &amp; SPECIALTY CONSULTANT (PROGRAM)</b>	\$8,691,851.21	\$104,103.04
<b>ENGINEERING &amp; SPECIALTY CONSULTANT (PROJECT)</b>	\$15,479,276.00	\$1,634,902.96
<b>CONSTRUCTION CONTRACTOR / CMAR</b>	\$982,671.92	\$628,389.69
<b>TOTALS:</b>	\$25,153,799.13	\$2,367,395.69

## 4.0 COST REPORT AND FINANCIAL CONSIDERATIONS (CONTINUED)

### 4.4 Contract Amendments and Change Orders

This month, three (3) work order amendments related to the final design of surface water transmission system segment W-4 and on-going wastewater treatment plant process modelling were presented for consideration and approved by the SJRA Board of Directors. Also, change orders were approved by the SJRA General Manager on the GRP Building No. 1 and SWF Site Temporary Access Road construction projects. A detailed summary of the work order amendments and change orders is included as Exhibit 11.



### 4.5 Claims

No claims were identified this month.

### 4.6 CIP Cash Flow

The GRP Program CIP cash flow through SJRA FY2015 reflects known expenditures through April 2012 and estimates for future expenditures were updated this month. All active and currently identified future GRP Program Projects and initiatives are included in the cash flow. A graph of forecasted monthly expenditures from the referenced cash flow is attached as Exhibit 7.

### 4.7 CIP Budget Estimates at Completion

#### **4.7.1 GRP Program**

Comparison of in-place funding against currently contracted and identified near term GRP Program contracting needs (plus contingency) indicates that current funding will allow the GRP Program to **meet its currently forecasted expenditure needs through Spring 2013**.

The **total gross funds** (including capitalized interest) required to execute Phase I of the GRP Program are currently estimated at \$577,930,358.49.

#### **4.7.2 GRP Projects**

The GRP Program Projects remained within their approved contract budgets through this month. Exhibit 8 indicates each active GRP Program Project and GRP Program contract forecasted estimate at completion (EAC). Additionally, all current GRP Program contracts, including their respective SJRA Board of Directors approved budgeted amounts and percent complete, are listed in Exhibit 2.

### 4.8 Land Acquisition

Land and easement acquisition efforts continued this month for the GRP Program Team and is assembled team of land acquisition consultants and counsel. Metes & bounds descriptions for easements to be acquired have been initiated on all transmission system segments except C-1, which will begin after the completion of preliminary engineering. In preparation for negotiations, copies of the State of Texas Landowner's Bill of Rights were distributed to a number of property owners along segment T-1. An eminent domain hearing for one easement was held on April 18, 2012, and the subsequent request for award funding has been submitted and is currently being processed. A cumulative summary of easement acquisition activity is provided in attached Exhibit 9



## 5.0 QUALITY ASSURANCE

Quality assurance efforts for the GRP Program continued this month as final design progressed on all SWF and ten (10) of the eleven (11) surface water transmission system design segments. Preliminary engineering for the SWRF and segment C-1 moved closer to completion, and 60% final design submittals were received and/or reviewed by the GRP Program Team on the RWI, HSPS, and segment T-1.

### *Preliminary Engineering*

This month's activity associated with the Preliminary Engineering Reports (PERs) and 30% (complete) design drawings produced by the engineering consultants is as follows:

1. **Arcadis/Malcolm-Pirnie (SWRF)** – After the PER presentation in late March 2012, the GRP Program Team provided additional comments on the PER and 30% drawings. Finals of each are anticipated in May 2012.
2. **Dannenbaum (C-1)** - The draft PER and 30% drawings were submitted to and reviewed by the GRP Program Team early this month. Review comments were provided and the final PER and 30% drawings were submitted to the GRP Program Team on April 30, 2012. A PER presentation is being scheduled for May 2012.

### *Final Design*

This month's activity associated with final design deliverables produced by the engineering consultants is as follows:

1. **AECOM (HSPS)** – Review of the 60% drawings was completed by the GRP Program Team this month and comments were provided. Early Work Package NO. 2 drawings and specifications are currently under review.
2. **Freese and Nichols (RWI)** – Review of the 60% drawings by the GRP Program Team has been completed and comments have been provided.

As final design continues and milestone submittals are received, the GRP Program Team will review and provide comments, as applicable to each

milestone. The review will be based on submittal compliance with the GRP Program's Design Standards and Criteria Manual, completeness per Program Management Plan (PMP) Section 14.0 – Quality Management and PMP Section 21.0 – Design Management, and general project understanding.

### *Construction*

Construction of GRP Building No. 1 and the SWF temporary access road continued this month while the relocation of the AquaTexas access road and sanitary sewer got underway. SJRA Construction Inspectors continue to make regular visits to the project site to monitor and document observed progress and confirm compliance with the construction contract. The same quality assurance efforts will be conducted once construction of the SWF and surface water transmission system begins later this year.

## 6.0 EXHIBITS

Exhibit 1 - GRP Program Schedule

Exhibit 2 - Active Contracts

Exhibit 3 - Monthly GRP Program Financing Report

Exhibit 4 - SJRA GRP Schedule of Revenues & Expenses - Actual & Budget and SJRA GRP Savings & Uses

Exhibit 5A - GRP Program Capital Improvements Program Estimate-to-Complete

Exhibit 5B - GRP Program Fund Data

Exhibit 6 - Funding Source Summary

Exhibit 7 - GRP Monthly Forecasted Expenditures for Contracted Services

Exhibit 8 - Estimate at Completion (EAC) for Current Authorizations

Exhibit 9 - Land Acquisition Summary

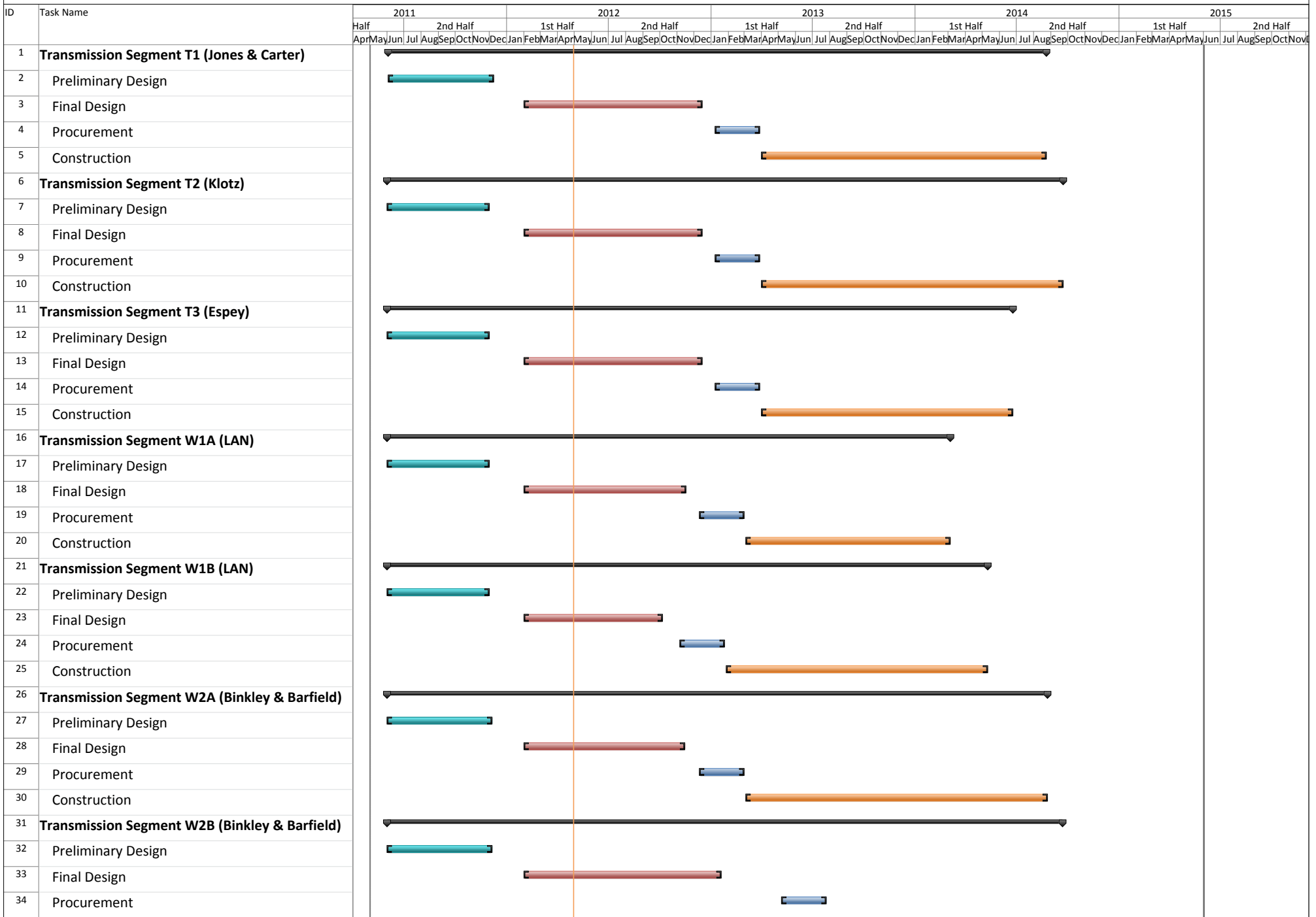
Exhibit 10 - GRP Program Monthly Meeting Log

Exhibit 11 - GRP Amendments and Change Orders

Exhibit 12 - Construction Photos



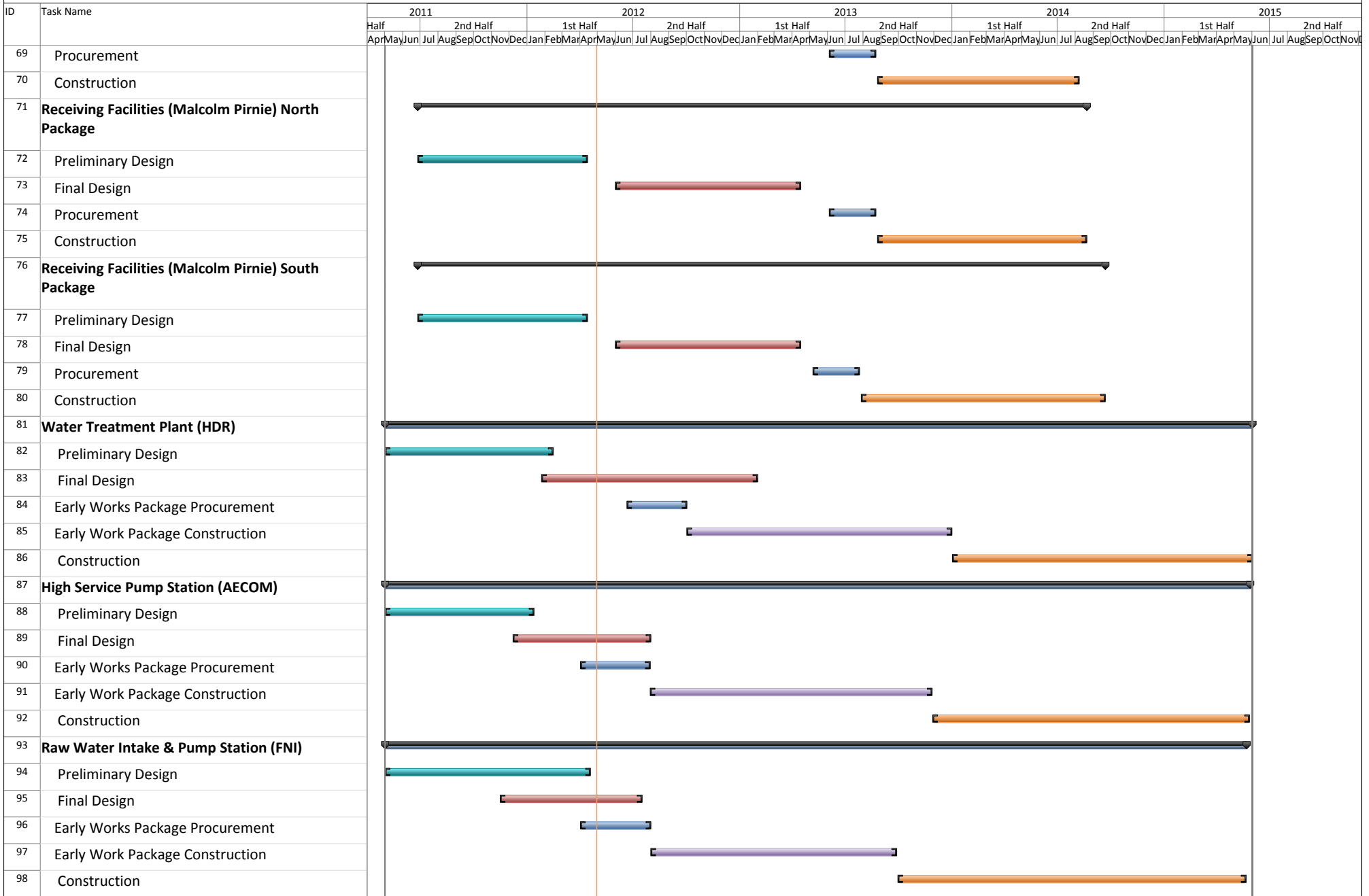
# Exhibit 1 - GRP Program Schedule



## Exhibit 1 - GRP Program Schedule (Continued)

ID	Task Name	2011		2012				2013				2014				2015																	
		Half	2nd Half	1st Half	2nd Half	1st Half	2nd Half	1st Half	2nd Half	1st Half	2nd Half	1st Half	2nd Half	1st Half	2nd Half																		
		Apr	May	Jun	Jul	Aug	Sep	Oct	Nov	Dec	Jan	Feb	Mar	Apr	May	Jun	Jul	Aug	Sep	Oct	Nov	Dec	Jan	Feb	Mar	Apr	May	Jun	Jul	Aug	Sep	Oct	Nov
35	Construction																																
36	<b>Transmission Segment W3A (Cobb Fendley)</b>	▼																															▶
37	Preliminary Design																																
38	Final Design																																
39	Procurement																																
40	Construction																																
41	<b>Transmission Segment W3B (Cobb Fendley)</b>	▼																															▶
42	Preliminary Design																																
43	Final Design																																
44	Procurement																																
45	Construction																																
46	<b>Transmission Segment W4 (LJA)</b>	▼																															▶
47	Preliminary Design																																
48	Final Design																																
49	Procurement																																
50	Construction																																
51	<b>Transmission Segment C1 (Dannenbaum)</b>																																
52	Preliminary Design																																
53	Final Design																																
54	Procurement																																
55	Construction																																
56	<b>Transmission Segment C2 (Schaumburg &amp; Polk)</b>	▼																															▶
57	Preliminary Design																																
58	Final Design																																
59	Procurement																																
60	Construction																																
61	<b>Transmission Segment C3 (Kimley-Horn)</b>	▼																															▶
62	Preliminary Design																																
63	Final Design																																
64	Procurement																																
65	Construction																																
66	<b>Transmission Segment C4 (R.G. Miller)</b>	▼																															▶
67	Preliminary Design																																
68	Final Design																																

### Exhibit 1 - GRP Program Schedule (Continued)







## Exhibit 2 Selected GRP Program Contracts April 30, 2012

GRP Program Projects - Design										
Engineering Consultant	Project Name	PER Fee	Percent Complete	Metes & Bounds Fee	Percent Complete	Final Design Fee	Percent Complete	CPS Fee	Percent Complete	Engineer's Construction Cost Estimate
Jones & Carter	Transmission Segment T1	\$ 923,031	100%	*		\$ 975,317	45%			\$ 19,251,600
Klotz	Transmission Segment T2	\$ 623,565	100%	\$ 170,848	40%	\$ 819,546	45%			\$ 19,800,000
Espey	Transmission Segment T3	\$ 553,123	100%	\$ 146,847	35%	\$ 855,184	35%			\$ 15,720,000
Lockwood, Andrews, Newnan	Transmission Segment W1	\$ 920,621	100%	\$ 96,690	44%	\$ 1,086,983	41%			\$ 17,600,400
Binkley & Barfield, Inc.	Transmission Segment W2	\$ 956,237	100%	*		\$ 1,360,807	32%			\$ 18,906,300
Cobb Fendley	Transmission Segment W3	\$ 1,161,967	100%	\$ 535,228	25%	\$ 1,555,247	22%			\$ 19,935,207
LJA	Transmission Segment W4	\$ 364,730	100%	*		\$ 528,911	5%			\$ 6,716,718
Dannenbaum	Transmission Segment C1	\$ 332,300	100%	*						\$ 6,455,000
Schaumburg & Polk	Transmission Segment C2	\$ 1,003,246	100%	\$ 309,980	0%	\$ 685,068	10%			\$ 13,994,727
Kimley-Horn	Transmission Segment C3	\$ 490,657	100%	\$ 159,740	0%	\$ 616,103	15%			\$ 7,420,000
R.G. Miller	Transmission Segment C4	\$ 217,507	100%	\$ 18,016	0%	\$ 281,449	30%			\$ 4,640,156
Malcolm Pirnie	Receiving Facilities	\$ 598,651	100%	*		\$ 1,209,451	10%			\$ 9,427,000

\*Metes and bounds efforts are included in the final design survey work order.



**Exhibit 2 (Continued)**  
**Selected GRP Program Contracts**  
**April 30, 2012**

GRP Program Projects - Design										
Engineering Consultant	Project Name	PER Fee	Percent Complete	Metes & Bounds Fee	Percent Complete	Final Design Fee	Percent Complete	CPS Fee	Percent Complete	Engineer's Construction Cost Estimate
HDR, Inc.	Water Treatment Plant	\$ 3,104,114	98%			\$ 7,694,130	10%			\$ 135,000,000
AECOM, Inc.	High Service Pump Station	\$ 1,224,776	100%			\$ 1,872,583	60%			\$ 39,960,000
Freeze and Nichols, Inc.	Raw Water Intake and Pump Station	\$ 1,249,700	100%			\$ 1,284,900	60%			\$ 21,000,000
ACES	Access Rd. & San. Swr. Relocation; Temp. SWF Access Rd.					\$ 435,000	100%	\$ 50,000.00	0%	\$ 577,000; \$ 1,500,000
EMA, Inc.	Fiber Optic System	\$ 161,390	100%			\$ 279,899	30%			\$ 5,364,000
<b>TOTALS</b>		<b>\$ 13,885,615</b>	<b>-</b>	<b>\$ 1,437,349</b>	<b>-</b>	<b>\$ 21,540,578</b>	<b>-</b>	<b>\$ 50,000</b>	<b>-</b>	<b>\$ 363,268,108</b>



**Exhibit 2 (Continued)**  
**Selected GRP Program Contracts**  
**April 30, 2012**

GRP Program Consultant Contracts			
Engineering Consultant	Program Consultant Service	Total Fee of Work Orders	Percent Complete
Brown & Gay Engineers	Program Management	\$ 7,244,751	79%
Raba Kistner	Geotechnical	\$ 145,260	35%
LandTech	Survey	\$ 514,524	87%
Halff	Environmental	\$ 1,065,324	98%
Property Acquisition Services	Land Acquisition	\$ 1,415,550	72%
V&A	Cathodic Protection	\$ 511,978	25%
KDM	Land Acquisition	\$ 401,700	40%
Andrews Kurth	Legal	\$ 900,000	57%
Mike Bellar	Legal	\$ 100,000	15%
Brown & Caldwell	CMAR Contract Development Assistance	\$ 118,286	79%
Greenburg Traurig	Legal	\$ 200,000	48%
AECOM	Transient	\$ 311,400	35%
McCarthy	CMAR	\$ 10,346,793	45%
KBR	CM&I	\$ 533,433	6%
<b>Total</b>		<b>\$ 23,808,998</b>	



**Exhibit 2 (Continued)**  
**Selected GRP Program Contracts**  
**April 30, 2012**

GRP Program Projects - Construction			
Construction Project	Construction Contractor	Contract Amount	Percent Complete
GRP Building No. 1	Brookstone	\$ 1,975,306	43%
GRP Temporary Access Road	Lindsey Construction	\$ 1,003,652	17%
Aqua Texas Sanitary Sewer and Road Relocation	Randy Roan	\$ 516,651	0%
<b>Total</b>		<b>\$ 3,495,608</b>	



## Exhibit 3

# Monthly GRP Program Financing Report

### Fiscal Year 2012

Through 4/30/2012

	WIF Funds	2011 Special Projects Revenue Bonds	TWDB 2011 'D' Fund	Totals
<b>A. Program Budget</b>				
Bond Issue Amount	\$ 21,500,000.00	\$ 83,430,358.49	\$ 67,470,000.00	\$ 172,400,358.49
<b>Total Investment</b>	<b>\$ 21,500,000.00</b>	<b>\$ 83,430,358.49</b>	<b>\$ 67,470,000.00</b>	<b>\$ 172,400,358.49</b>
<b>B. Contracted Costs</b>				
Contracts Completed	\$ 3,104,963.00	\$ 382,351.02	\$ -	\$ 3,487,314.02
Current Contract Values	\$ 17,906,218.89	\$ 46,267,419.88	\$ 1,119,653.90	\$ 65,293,292.67
Change Orders	\$ -	\$ 271,975.05	\$ -	\$ 271,975.05
<b>Total</b>	<b>\$ 21,011,181.89</b>	<b>\$ 46,921,745.95</b>	<b>\$ 1,119,653.90</b>	<b>\$ 69,052,581.74</b>
<b>C. Expenditures</b>				
Paid Previous Fiscal Years	\$ 8,359,940.89	\$ 85,949.90	\$ -	\$ 8,445,890.79
Paid Current Fiscal Year	\$ 11,085,388.06	\$ 6,934,207.53	\$ 112,924.00	\$ 18,132,519.59
Issuance Costs	\$ 470,337.08	\$ 2,049,764.39	\$ 751,195.33	\$ 3,271,296.80
Capitalized Interest	\$ -	\$ 7,858,241.52	\$ 5,166,233.00	\$ 13,024,474.52
<b>Total</b>	<b>\$ 19,915,666.03</b>	<b>\$ 16,928,163.34</b>	<b>\$ 6,030,352.33</b>	<b>\$ 42,874,181.70</b>
<b>D. Remaining</b>				
Uncontracted Funds	\$ 18,481.03	\$ 26,600,606.63	\$ 60,432,917.77	\$ 87,052,005.43
Fund Balance *	\$ 1,584,333.97	\$ 66,502,195.15	\$ 61,439,647.67	\$ 129,526,176.79

\*Excluding net investment income

**Exhibit 4**  
**San Jacinto River Authority**  
**Groundwater Reduction Plan**  
**Schedule of Revenues & Expenses - Actual & Budget**  
**For the Seven Months Ending March 31, 2012**

	March			Year To Date		
	Actual	Budget	Variance	Actual	Budget	Variance
<b>OPERATING REVENUES</b>						
Water sales						
GRP pumping fees	\$ 867,106.73	\$ 1,183,455.75	\$ (316,349.02)	\$ 7,550,428.24	\$ 7,745,435.00	\$ (195,006.76)
<b>TOTAL OPERATING REVENUES</b>	<b>867,106.73</b>	<b>1,183,455.75</b>	<b>(316,349.02)</b>	<b>7,550,428.24</b>	<b>7,745,435.00</b>	<b>(195,006.76)</b>
<b>OPERATING EXPENSES</b>						
Payroll & employee benefit expenses	145,989.46	229,796.47	83,807.01	990,590.53	1,670,819.81	680,229.28
Professional fees		28,922.00	28,922.00	(12,215.51)	455,854.00	468,069.51
Purchased & contracted services	25,718.09	22,334.00	(3,384.09)	66,107.11	168,334.00	102,226.89
Supplies, materials & utilities	11,915.02	28,221.75	16,306.73	1,716,388.55	2,412,061.25	695,672.70
Maintenance repairs, parts & rentals	1,547.23	1,167.33	(379.90)	9,474.53	8,163.31	(1,311.22)
General & administration	47,205.79	84,439.88	37,234.09	324,349.18	591,079.16	266,729.98
<b>TOTAL OPERATING EXPENSES</b>	<b>232,375.59</b>	<b>394,881.43</b>	<b>162,505.84</b>	<b>3,094,694.39</b>	<b>5,306,311.53</b>	<b>2,211,617.14</b>
<b>NON-OPERATING REVENUES &amp; EXPENSES</b>						
Interest on investments	116,325.82	15,410.33	100,915.49	432,211.99	107,872.31	324,339.68
Unrealized Gains (losses) on investments	(159,127.05)		(159,127.05)	(110,230.82)		(110,230.82)
Realized Gains (losses) on investments	(23,682.38)		(23,682.38)	(46,572.53)		(46,572.53)
Other revenues	(14.35)		(14.35)	569.16		569.16
Depreciation	(3,365.78)		(3,365.78)	(22,945.62)		(22,945.62)
Interest expense	(531,535.29)	(144,458.67)	(387,076.62)	(3,013,849.21)	(1,011,210.69)	(2,002,638.52)
Amortized debt issuance expense	(10,947.33)		(10,947.33)	(66,132.07)		(66,132.07)
<b>TOTAL NON-OPERATING</b>	<b>(612,346.36)</b>	<b>(129,048.34)</b>	<b>(483,298.02)</b>	<b>(2,826,949.10)</b>	<b>(903,338.38)</b>	<b>(1,923,610.72)</b>
<b>NET INCOME (LOSS)</b>	<b>\$ 22,384.78</b>	<b>\$ 659,525.98</b>	<b>\$ (637,141.20)</b>	<b>\$ 1,628,784.75</b>	<b>\$ 1,535,785.09</b>	<b>\$ 92,999.66</b>

## Exhibit 4 (Continued)

### GRP Division

#### Clarification of Actual & Budget Variances

(in thousands)

Category	Driver	September 2011	October 2011	November 2011	December 2011	January 2012	February 2012	March 2012	FYTD 2012
GRP Pumping Fees	Usage variance Sep-Nov due to drought conditions; usage variance Dec-Mar due to wet conditions	912	468	205	(333)	(693)	(439)	(316)	(195)
Payroll and related expenses	Actual labor and related expenses less than budgeted	68	102	99	114	110	51	84	629
Professional Fees	Legal, Engineering & Consultants budgeted straight-line, should correct over time	69	79	103	21	17	17	27	331
	Staffing Services budgeted straight-line, should correct over time	48	23	32	20	10	1	2	137
Purchased & Contracted Services	Contracted Services budgeted straight-line, should correct over time	9	7	15	12	13	14	15	84
	Water Conservation & Public Education Activities budgeted straight-line, should correct over time	14	4	6	4	4	4	(18)	18
Supplies, Materials, Utilities, Maintenance, Repairs, Parts & Rentals	Additional Water Supply, lump sum budget in Sept., should correct over time	500	-	-	-	-	-	-	500
	Reservation Fees: COH \$100,861.24 due to 2011 true-up	-	-	-	-	684	(602)	-	82
	SJRA: payment made in February								
	Supplies, Materials, Utilities, Maintenance, Repairs, Parts & Rentals expenses less than budgeted	20	18	19	14	4	21	16	112
General & Administration	Actual labor and related expenses less than budgeted	64	38	27	30	38	84	37	318
Non-Operating	Non-Operating expenses more than budgeted; largely driven by bond interest expense	(186)	(199)	(186)	(268)	(262)	(339)	(483)	(1,924)
		<b>1,518</b>	<b>540</b>	<b>320</b>	<b>(387)</b>	<b>(74)</b>	<b>(1,188)</b>	<b>(637)</b>	<b>93</b>

## Exhibit 5A

### GRP Program Capital Improvements Program Estimate-to-Complete

SERVICES	ESTIMATE-TO-COMPLETE	
<b>Pre-Engineering Phase Services</b>	<b>\$</b>	<b>4,747,354</b>
(GRP Development, Environmental Studies, Pilot Plant, Surface Water Treatment Plant Site Survey)		
<b>Engineering Phase Services</b>	<b>\$</b>	<b>45,278,754</b>
(Planning, Preliminary Engineering, Final Engineering, Geotechnical, Survey, Metes & Bounds, Subsurface Utility Investigation, Environmental)		
<b>Construction Phase Services</b>	<b>\$</b>	<b>29,652,113</b>
(Early Equipment Procurement, Engineering Services During Construction, Construction Management & Inspection [Transmission System], Construction Administration & Inspection [SWF], Material Testing)		
<b>Construction</b>	<b>\$</b>	<b>370,412,721</b>
(Surface Water Transmission System, Raw Water Intake and Pump Station, Surface Water Treatment Plant, High Service Pump Station and Ground Storage Tanks, Surfacewater Receiving Facilities, Infrastructure, Buildings, Roadways, Site Security, Access Roadways)		
<b>Building No. 1; Access Road; Vegetative Buffer; Construction Materials Testing; SWF Site Vegetation Management; Sanitary Sewer/Access Rd. Relocation</b>	<b>\$</b>	<b>3,640,666</b>
<b>Transmission Segment C1 - Construction</b>	<b>\$</b>	<b>7,000,000</b>
<b>Transmission Segment C2 - Construction</b>	<b>\$</b>	<b>13,994,727</b>
<b>Transmission Segment C3 - Construction</b>	<b>\$</b>	<b>7,420,000</b>
<b>Transmission Segment C4 - Construction</b>	<b>\$</b>	<b>4,662,706</b>
<b>Transmission Segment T1 - Construction</b>	<b>\$</b>	<b>17,368,800</b>
<b>Transmission Segment T2 - Construction</b>	<b>\$</b>	<b>19,800,000</b>
<b>Transmission Segment T3 - Construction</b>	<b>\$</b>	<b>15,720,000</b>
<b>Transmission Segment W1 - Construction</b>	<b>\$</b>	<b>22,453,000</b>
<b>Transmission Segment W2 - Construction</b>	<b>\$</b>	<b>19,923,204</b>
<b>Transmission Segment W3 - Construction</b>	<b>\$</b>	<b>17,000,000</b>
<b>Transmission Segment W4 - Construction</b>	<b>\$</b>	<b>6,000,000</b>
<b>Receiving Facilities - Construction</b>	<b>\$</b>	<b>24,802,000</b>
<b>SWF Work Package No. 2</b>	<b>\$</b>	<b>28,263,870</b>
<b>SWF Work Package No. 3</b>	<b>\$</b>	<b>62,672,059</b>
<b>SWF Work Package No. 4 (GMP)</b>	<b>\$</b>	<b>86,327,689</b>
<b>Transmission System Fiber Optic - Construction</b>	<b>\$</b>	<b>5,364,000</b>
<b>Permanent Access Roadway Construction</b>	<b>\$</b>	<b>8,000,000</b>
<b>Program Management</b>	<b>\$</b>	<b>12,329,215</b>
(GRP Program Management, Survey, Geotechnical, Transient, Corrosion, Legal Consultants)		
<b>Land Acquisition</b>	<b>\$</b>	<b>16,267,645</b>
(Legal, Appraisal, Title Research, Land Acquisition Consultants)		
<b>Total:</b>	<b>\$</b>	<b>478,687,802</b>

Bond issuance costs are not included.





## Exhibit 5B

### GRP Program Fund Data

May 14, 2012

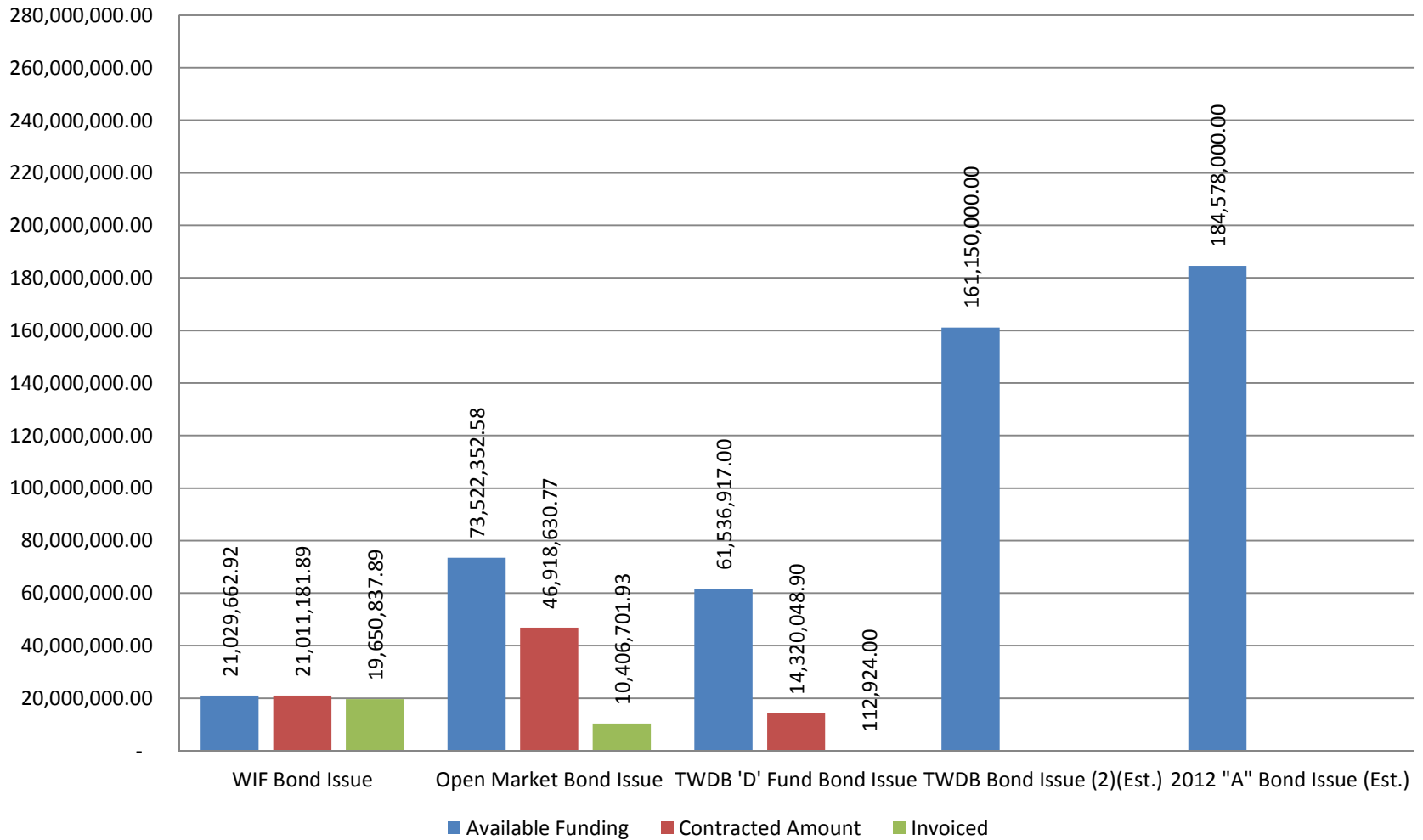
Funding Source	Amount Authorized by Board To-Date	Interest Rate	Bond Costs	Capitalized Interest	Debt Service Reserve Fund	Amount Currently Available	Pending Funding Source	Invoiced To-Date	Remaining Amount
WIF Bond Issue	\$ 21,500,000.00	.854% - 2.706%	\$ 470,337.08			\$ 21,029,662.92		\$ 19,650,837.89	\$ 1,378,825.03
Open Market Bond Issue	\$ 83,430,358.49	3% - 5.25%	\$ 2,049,764.39	\$ 7,858,241.52		\$ 73,522,352.58		\$ 10,406,701.93	\$ 63,115,650.65
TWDB 'D' Fund Bond Issue	\$ 67,470,000.00	1.22% - 4.97%	\$ 751,195.33	\$ 5,166,233.00		\$ 61,552,571.67		\$ 112,924.00	\$ 61,552,571.67
TWDB Bond Issue (2)(Est.)	\$ 175,000,000.00		\$ 980,000.00	\$ 12,870,000.00			\$ 161,150,000.00		\$ 161,150,000.00
2012 "A" Bond Issue (Est.)	\$ 230,530,000.00		\$ 1,097,000.00	\$ 20,125,000.00	\$ 24,730,000.00		\$ 184,578,000.00		\$ 184,578,000.00
<b>Totals</b>	<b>\$ 577,930,358.49</b>		<b>\$ 5,348,296.80</b>	<b>\$ 46,019,474.52</b>	<b>\$ 24,730,000.00</b>	<b>\$ 156,104,587.17</b>	<b>\$ 345,728,000.00</b>	<b>\$ 30,170,463.82</b>	<b>\$ 471,775,047.35</b>

Notes:

1. These value do not include investment income.
2. Red items are estimates only.
3. Series 2011 bond costs include \$681,132.45 for bond insurance and \$459,709.50 for underwriter's discount.

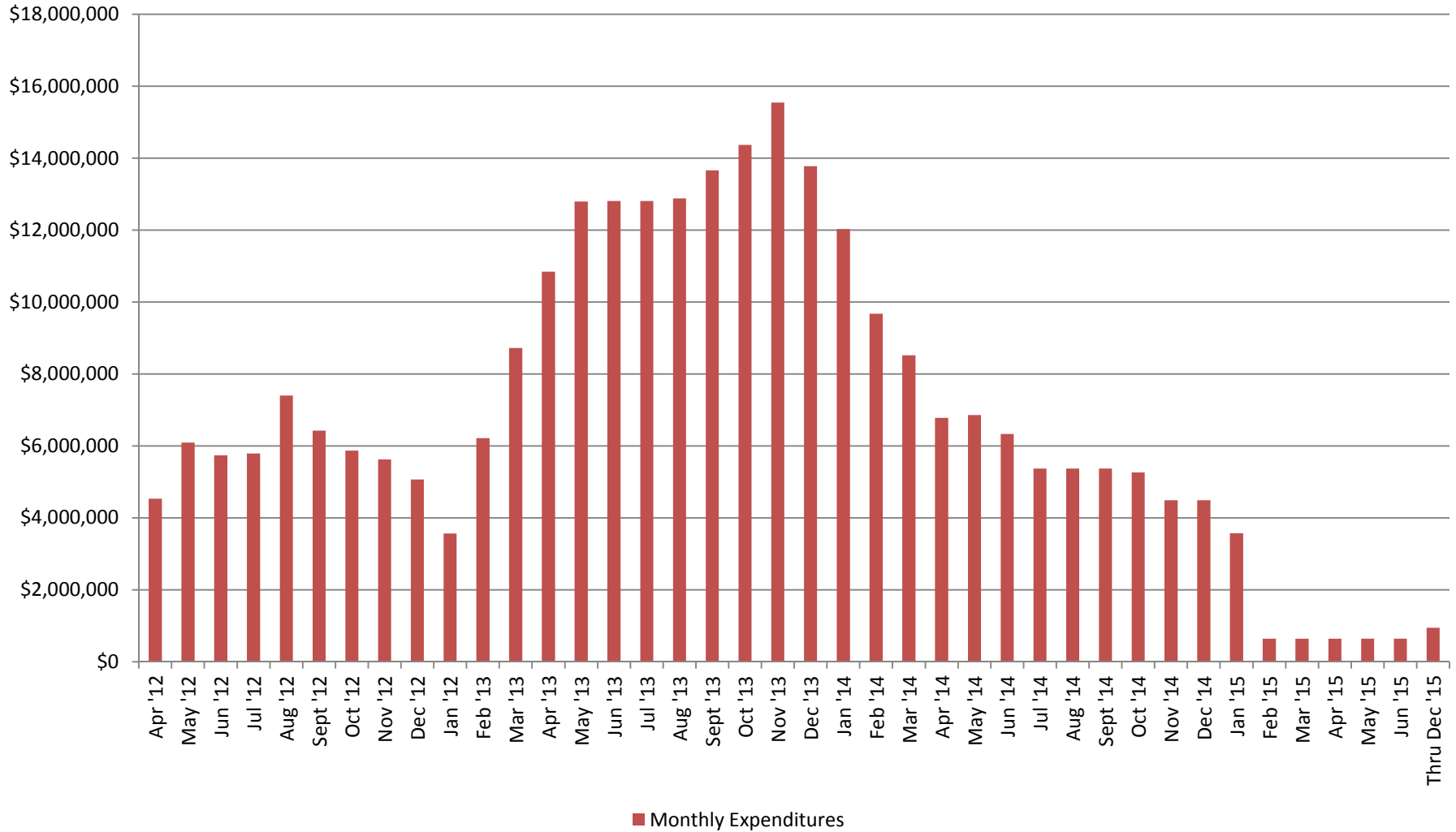


## Exhibit 6 Funding Source Summary May 14, 2012





## Exhibit 7 GRP Program Monthly Forecasted Expenditures for Contracted Services May 14, 2012





## Exhibit 8

### Estimate at Completion (EAC) for Current Authorizations

### April 30, 2012

#### Surface Water Transmission System

Project	Firm	Amount Authorized by Board	Board Authorized Modifications		Forecasted Modification Amount	Estimate at Completion (EAC)
			Dollars	%		
T1	Jones & Carter	\$ 1,898,348.00		0.0%		\$ 1,898,348.00
T2	Klotz	\$ 1,613,958.55		0.0%		\$ 1,613,958.55
T3	Espey	\$ 1,555,154.42		0.0%		\$ 1,555,154.42
W1	LAN	\$ 2,104,294.00		0.0%		\$ 2,104,294.00
W2	Binkley & Barfield	\$ 2,317,043.55		0.0%		\$ 2,317,043.55
W3	Cobb Fendley	\$ 3,252,441.50		0.0%		\$ 3,252,441.50
W4	LJA	\$ 876,066.81	\$ 17,574.56	2.0%		\$ 893,641.37
C1	Dannenbaum	\$ 332,300.00		0.0%		\$ 332,300.00
C2	Schaumburg & Polk	\$ 1,790,745.97	\$ 207,547.98	11.6%		\$ 1,998,293.95
C3	Kimley-Horn	\$ 1,234,193.45	\$ 32,307.28	2.6%		\$ 1,266,500.73
C4	R.G. Miller	\$ 516,971.97		0.0%		\$ 516,971.97
RFs	Malcolm Pirnie/Arcadis	\$ 1,808,102.00		0.0%		\$ 1,808,102.00
CM&I	KBR	\$ 533,432.62		0.0%		\$ 533,432.62
<b>Subtotal - Surface Water Transmission System</b>		<b>\$ 19,833,052.84</b>	<b>\$ 257,429.82</b>	<b>1.3%</b>	<b>\$ -</b>	<b>\$ 20,090,482.66</b>

#### Surface Water Facilities

Project	Firm	Amount Authorized by Board	Board Authorized Modifications		Forecasted Modification Amount	Estimate at Completion (EAC)
			Dollars	%		
WTP	HDR	\$ 13,590,846.00	\$ 271,719.00	2.0%		\$ 13,862,565.00
HSPS	AECOM	\$ 3,364,192.00		0.0%		\$ 3,364,192.00
RWI&PS	Freese and Nichols	\$ 2,841,470.00		0.0%		\$ 2,841,470.00
CMAR	McCarthy	\$ 10,346,793.00		0.0%		\$ 10,346,793.00
<b>Subtotal - Surface Water Facilities</b>		<b>\$ 30,143,301.00</b>	<b>\$ 271,719.00</b>	<b>0.9%</b>	<b>\$ -</b>	<b>\$ 30,415,020.00</b>



## Exhibit 8 (Continued)

# Estimate at Completion (EAC) for Current Authorizations

## April 30, 2012

### Program Consultant Services & Other Projects

Project	Firm	Amount Authorized by Board	Board Authorized Modifications		Forecasted Modification Amount	Estimate at Completion (EAC)
			Dollars	%		
Prog Mgmt	Brown & Gay	\$ 7,244,751.00		0.0%		\$ 7,244,751.00
Prog Survey	Landtech	\$ 514,524.00		0.0%		\$ 514,524.00
Prog Geo	Raba Kistner	\$ 145,260.00		0.0%		\$ 145,260.00
Prog Tran	AECOM	\$ 224,100.00	\$ 150,000.00	66.9%		\$ 374,100.00
Access Rd	ACES	\$ 435,000.00		0.0%		\$ 435,000.00
Access Rd	S&V Survey	\$ 66,875.00		0.0%		\$ 66,875.00
Land Acq	KDM	\$ 359,995.00	\$ 41,705.00	11.6%		\$ 401,700.00
Land Acq	PAS	\$ 1,415,550.00		0.0%		\$ 1,415,550.00
Prog Env	Halff	\$ 1,022,192.00	\$ 43,131.52	4.2%		\$ 1,065,323.52
Prog Fiber	EMA	\$ 441,289.00		0.0%		\$ 441,289.00
Prog Corr	V&A	\$ 511,978.00		0.0%		\$ 511,978.00
Prog Svcs & Projs	Other Program Services & Projects	\$ 2,527,447.08		0.0%		\$ 2,527,447.08
<b>Subtotal - Program Consultant Services &amp; Other Projects</b>		<b>\$ 14,908,961.08</b>	<b>\$ 234,836.52</b>	<b>1.6%</b>	<b>\$ -</b>	<b>\$ 15,143,797.60</b>

### Construction Contracts

Project	Firm	Amount Authorized by Board	Board Authorized Modifications		Forecasted Modification Amount	Estimate at Completion (EAC)
			Dollars	%		
GRP Bldg #1	Brookstone	\$ 2,009,900.00	\$ (34,594.00)	-1.7%		\$ 1,975,306.00
Bldg #1 CMT	Aviles	\$ 48,193.60		0.0%		\$ 48,193.60
Landscape Buffer	KeyScape	\$ 47,490.00		0.0%		\$ 47,490.00
Temp Access Road	Lindsey Construction	\$ 983,401.50	\$ 20,250.00	2.1%		\$ 1,003,651.50
Access Road CMT	Terracon Consultants	\$ 12,842.50		0.0%		\$ 12,842.50
Aqua Texas Sewer	Randy Roan	\$ 516,650.50		0.0%		\$ 516,650.50
Aqua Texas CMT	Aviles	\$ 31,057.20		0.0%		\$ 31,057.20
Other	Other Construction Contracts	\$ 5,475.00		0.0%		\$ 5,475.00
<b>Subtotal - Construction Contracts</b>		<b>\$ 3,655,010.30</b>	<b>\$ (14,344.00)</b>	<b>-0.4%</b>	<b>\$ -</b>	<b>\$ 3,640,666.30</b>

### Totals

	Amount Authorized by Board	Board Authorized Modifications		Forecasted Modification Amount	Estimate at Completion (EAC)
		Dollars	%		
Subtotal - Surface Water Transmission System	\$ 19,833,052.84	\$ 257,429.82	1.3%	\$ -	\$ 20,090,482.66
Subtotal - Surface Water Facilities	\$ 30,143,301.00	\$ 271,719.00	0.9%	\$ -	\$ 30,415,020.00
Subtotal - Program Consultant Services & Other Projects	\$ 14,908,961.08	\$ 234,836.52	1.6%	\$ -	\$ 15,143,797.60
Subtotal - Construction Contracts	\$ 3,655,010.30	\$ (14,344.00)	-0.4%	\$ -	\$ 3,640,666.30
<b>Total</b>	<b>\$ 68,540,325.22</b>	<b>\$ 749,641.34</b>	<b>1.1%</b>	<b>\$ -</b>	<b>\$ 69,289,966.56</b>



## Exhibit 9 Land Acquisition Summary April 30, 2012

Project	Anticipated Number of Easements to Acquire	Easements Acquired This Month	Easements Acquired Total
Transmission System Segment T-1	47	0	3
Transmission System Segment T-2	1	0	0
Transmission System Segment T-3	8	0	0
Transmission System Segment C-1	12	0	0
Transmission System Segment C-2	45	0	0
Transmission System Segment C-3	26	0	0
Transmission System Segment C-4	5	0	0
Transmission System Segment W-1	41	0	0
Transmission System Segment W-2	1	0	0
Transmission System Segment W-3	171	0	0
Transmission System Segment W-4	15	0	0
Totals:	372	0	3



## Exhibit 10 GRP Program Monthly Meeting Log April 30, 2012

Meeting	Agenda	Location	Date	Participants
Receiving Facilities and Participant System Improvements		SJRA G&A Office	Tuesday April 3, 2012	Malcolm Pirnie, GRP Program Team Staff
AECOM CMAR Workshop 1	Coordination of power and instrumentation design, requirements for early work package, geotech coordination with Fugro	SJRA G&A Office	Tuesday April 3, 2012	AECOM, McCarthy, GRP Program Team staff
FNI CMAR Workshop 1	Air burst system for cleaning submerged inlet screens, plant security, fire system and electrical duct design	SJRA G&A Office	Tuesday April 3, 2012	FNI, McCarthy, GRP Program Team staff
HDR CMAR Workshop 1	SJRA equipment tagging convention changes, coordination with fire marshal, design of aeration in the GSTs for TTHM removal	SJRA G&A Office	Wednesday April 4, 2012	HDR, McCarthy, GRP Program Team staff
AECOM CMAR Workshop 2	Source of water for testing of GSTs, chemical trench coordination with HDR, location of manholes with sump pumps	SJRA G&A Office	Tuesday April 17, 2012	AECOM, McCarthy, GRP Program Team staff



## Exhibit 10 GRP Program Monthly Meeting Log April 30, 2012

Meeting	Agenda	Location	Date	Participants
FNI CMAR Workshop 2	Requirements for conduit tagging, early work package elements, requirement for fire marshal variance request, plant security, fire system	SJRA G&A Office	Tuesday April 17, 2012	FNI, McCarthy, GRP Program Team staff
HDR CMAR Workshop 2	Revised elevation for the pretreatment structure and impact on the raw water intake pumps, chemical trench location in HSPS area, THM stripping design	SJRA G&A Office	Wednesday April 18, 2012	HDR, McCarthy, GRP Program Team staff
Design Methodology		BGE Office	Thursday April 19, 2012	V&A, HDR, GRP Program Team staff
Early Work Package #2 Review		SJRA G&A Office	Thursday April 19, 2012	HDR, AECOM, FNI, McCarthy, GRP Program Team staff
GRP Program Review Committee Meeting		SJRA G&A Office	Monday April 23, 2012	Review Committee, GRP Program Team staff, general public
Oak Ridge North Receiving Facility Meeting		Oak Ridge North Water Plant No. 1	Monday April 23, 2012	Oak Ridge North representatives, Malcolm Pirnie, GRP Program Team staff
Constructon Communication Team Meeting		SJRA Woodlands Office	Wednesday April 25, 2012	Internal Stakeholders, GRP Program Team staff
SWPPP Strategy Meeting		SJRA G&A Office	Wednesday April 25, 2012	KBR, McCarthy, GRP Program Team staff





**Exhibit 10**  
**GRP Program Monthly Meeting Log**  
**April 30, 2012**

Meeting	Agenda	Location	Date	Participants
Monthly Northern Montgomery County GRP Program Technical Status Meeting		SJRA G&A Office	Wednesday April 25, 2012	Joint GRP Participant representatives, GRP Program Team staff
Monthly Southern Montgomery County GRP Program Technical Status Meeting		SJRA Woodlands Office	Thursday April 26, 2012	Joint GRP Participant representatives, GRP Program Team staff
SJRA Board of Directors Meeting		SJRA G&A Office	Thursday April 26, 2012	SJRA Board of Directors, GRP Program Team staff, general public
Meeting with Engineer for Panorama Village		Bleyl Engineering Office	Monday April 30, 2012	RG Miller, KBR, Bleyl, GRP Program Team staff



## Exhibit 11

### GRP Amendments and Change Orders

#### April 30, 2012

Project	Proposal Number	Modification Number	Description	Modification		Approval Date
				Amount	Days	
GRP Building No. 1	N/A	Brookstone Change Order No. 3	Deletion of Hurricane Shutter System & associated electrical connections; domestic & fire protection water supply system added, weather impact delay	\$ 8,543	15	4/2/2012
Transmission Line Segment W-4	N/A	11-149-3 AM1	Scope change due to project route alignment adjustments	\$ (12,312)	0	4/26/2012
Transmission Line Segment W-4	N/A	11-149-4 AM1	Scope change due to project route alignment adjustments	\$ 29,887	0	4/26/2012
Wastewater Treatment Plant (WWTP) Process Modeling	N/A		WWTP Process modeling to determine the impacts of surface water conversion at five (5) additional wastewater treatment plants	\$ 271,719	0	4/26/2012
GRP Temporary Access Road	N/A	Lindsey Change Order No. 2	Remove wooden mats at wetland locations and replace with a more contiguous material type access roadway	\$ (3,031)	0	4/26/2012



## Exhibit 12 Construction Photos April 2012



April 3, 2012 – SWF Temporary Access Road clearing



April 5, 2012 – GRP Building No. 1 foundation concrete pour



April 3, 2012 – SWF Temporary Access Road clearing



April 5, 2012 – GRP Building No. 1 foundation concrete pour



## Exhibit 12 Construction Photos April 2012



April 5, 2012 – GRP Building No. 1 foundation concrete pour



April 13, 2012 – GRP Building No. 1 roof truss installation



April 13, 2012 – GRP Building No. 1 steel column and beam erection



April 18, 2012 - GRP Building No. 1 roof truss and beam installation



## Exhibit 12 Construction Photos April 2012



April 19, 2012 – GRP Building No. 1 roof trusses and beams



April 24, 2012 – GRP Building No. 1 2-inch waterline installation



April 23, 2012 – GRP Building No. 1 6-inch waterline installation



April 27, 2012 – GRP Building No. 1 exterior wall construction