



GROUNDWATER REDUCTION PLAN PROGRAM

MONTHLY PROGRESS REPORT - AUGUST 2013

TABLE OF CONTENTS

Table of Contents	1	4.2 Financial Reports	10
Acronyms and Definitions	2	4.3 Invoices/Applications for Payment	10
1.0 Planning	3	4.4 Contract Amendments and Change Orders	10
1.1 Strategic	3	4.5 Claims	11
1.2 Engineering and Construction	3	4.6 CIP Cash Flow	11
1.3 Meetings	3	4.7 CIP Budget Estimates at Completion	11
2.0 Schedule	4	4.7.1 GRP Program	11
2.1 Engineering	4	4.7.2 GRP Projects	11
2.2 State Agency Coordination	5	4.8 Land Acquisition	11
2.3 Construction	6	5.0 Quality Assurance	12
3.0 Procurement	9	5.1 Final Design	12
3.1 Solicitations	9	5.2 Pre-Construction	12
3.2 Contract Awards	9	5.3 Construction	12
3.3 Process and Procedures	9	6.0 Exhibits	13
3.4 Look Ahead	9		
4.0 Cost Report and Financial Considerations	10		
4.1 GRP Program and GRP Project CIP Budget(s)	10		



ACRONYMS AND DEFINITIONS

ACRONYMS

CA&I	Construction Administration and Inspection
CCT	Construction Communication Team
CIP	Capital Improvement Project
CM&I	Construction Management and Inspection
CMAR	Construction Manager at Risk
CMT	Construction Material Testing
CSB / P	Competitive Sealed Bid / Proposal
EA	Environmental Assessment
EAC	Estimate At Completion
GIS	Geographic Information System
GRP	Groundwater Reduction Plan
GST	Ground Storage Tank
HSPS	High Service Pump Station
LSGCD	Lone Star Groundwater Conservation District
LVGU	Large Volume Groundwater User
PER	Preliminary Engineering Report
PMP	Program Management Plan
PSA	Professional Services Agreement
QA	Quality Assurance
RFB / Q / P	Request For Bids / Qualifications / Proposals
RWI / RWPS	Raw Water Intake / Raw Water Pump Station
SJRA	San Jacinto River Authority
SOQ	Statement Of Qualifications
SWF	Surface Water Facilities (SWTP, HSPS and RWI)
SWRF	Surface Water Receiving Facilities
SWTP	Surface Water Treatment Plant
TBD	To Be Determined
TCEQ	Texas Commission on Environmental Quality
TWDB	Texas Water Development Board
TxDOT	Texas Department Of Transportation
WIF	Water Infrastructure Fund

DEFINITIONS

GROUNDWATER REDUCTION PLAN (GRP)	The document developed and filed with the LSGCD indicating SJRA's plan to reduce the permitted 2009 groundwater pumpage of its GRP Participants by 30%. The GRP is administered by the SJRA, including any supplements, revisions, or amendments.
GRP PROGRAM TEAM	SJRA staff, Program Management Consultant (Brown & Gay Engineers, Inc.) staff, and technical consultants working interdependently toward meeting the goals of the Groundwater Reduction Plan.
GRP ADMINISTRATOR	The SJRA General Manager's designee who administers the SJRA Groundwater Reduction Plan and GRP Contract with GRP Participants.
GRP CONTRACT	Contract between the SJRA and a Participant to be included in the SJRA's efforts to meet the surface water conversion requirements mandated by the LSGCD.
JOINT GRP	GRP which is prepared to include (takes into account) LVGUs who have executed a GRP Contract with the SJRA to join the SJRA's GRP. Contracted LVGUs obtain LSGCD groundwater reduction regulation compliance through the SJRA's Joint GRP without preparing and submitting a GRP.
LARGE VOLUME GROUNDWATER USER(S) (LVGU)	Any person or entity that, through a single well or a combination of wells, actually produces or is authorized by permit(s) issued by the LSGCD to produce 10 million gallons or more of groundwater annually on or after January 1, 2008.
PARTICIPANT(S)	Regulated User(s) that enters into and remains subject to a written agreement with the SJRA to be included in the SJRA's GRP and includes the legal successors or assigns of Participant(s).
REGULATED USER(S)	Any public or private entity or person that is or becomes subject to the District Regulatory Plan established by the LSGCD and includes any amendments, revisions or supplements thereto as may be adopted by the LSGCD.
SJRA GRP DIVISION	Division of the SJRA responsible for GRP compliance, and the management, administration, operation and maintenance of the surface water facilities and surface water transmission system.



1.0 PLANNING

The GRP Program Team meets regularly for the purposes of setting performance expectations and goals of the GRP Program, identifying the efforts required to achieve these objectives, evaluating the effectiveness of such efforts, and modifying those efforts based upon both internal and external performance evaluations.

1.1 STRATEGIC

This month's strategic planning centered around the continued outreach efforts by SJRA staff to keep the public heavily informed of current and upcoming construction projects taking place in Montgomery County. Articles, such as the ones appearing in Dock Line Magazine, The Villager, Community Impact Newspaper as well as other local publications, assist in informing the general public of possible traffic disruptions and relay vital information related to traffic control plans. With the installation of 20,919 linear feet of pipeline thus far, traffic congestion and traffic delays are unfortunately inevitable. With this in mind, dissemination of up-to-date construction information as well as any GRP Program related information is a fundamental priority for SJRA. Essential facts and information such as construction alerts, traffic alerts and overall information regarding each transmission line segment can be found at www.sjra.net. Additionally, the Construction Communication Team (CCT) which was formed in May, 2012, meets regularly in an effort to communicate and relay important information to their constituents, local officials, and any and all interested parties. SJRA's partnership with this committee is essential in keeping the public apprised of new and changing situations that may effect the community.

1.2 ENGINEERING AND CONSTRUCTION

Our engineering consultants continue to provide procurement services by preparing proposal packages and assisting in the evaluation of construction proposals. As construction contracts are awarded on the remaining transmission line segments, the engineering consultants will provide construction phase services by reviewing submittals and pay applications as work proceeds.

1.3 MEETINGS

The GRP Program Team continued meeting with GRP Program stakeholders this month. A listing of these meetings is attached as ***Exhibit 9***.



Above, Aerial View of the GAC Building

Below, Rebar Installation at GAC Building



2.0 SCHEDULE

Currently, the GRP Program remains on schedule for the delivery of treated surface water to select Joint GRP Participants on or before January 1, 2016. A simplified GRP Program schedule can be found in attached **Exhibit 1**.

2.1 ENGINEERING

SURFACE WATER TRANSMISSION SYSTEM

Segment T1 – Design is complete with construction underway. Engineering consultant is providing construction phase services.

Segment T2 – Design is complete with construction underway. Engineering consultant is providing construction phase services.

Segment T3 – Design is complete with construction underway. Engineering consultant is providing construction phase services.

Segment W1 – Design is complete with construction underway for Segments W1A and W1B. Engineering consultant is providing construction phase services for both segments.

Segment W2 – Design is complete with construction underway for Segments W2A and W2B. Engineering consultant is providing construction phase services for both segments.

Segment W3 – Design submittal for Segments W3A and W3B is 100% complete.

Segment W4 – Design is complete. Engineering consultant is providing procurement support services.

Segment C1 – Design is complete for Segments C1A and C1B. Engineering consultant is providing procurement support services.

Segment C2 – Design is complete. Engineering consultant is providing procurement support services.

Segment C3 – Design is complete. Engineering consultant is providing procurement support services.

Segment C4 – Design is complete. Engineering consultant is providing procurement support services.

Surface Water Receiving Facilities-South – Design is complete and construction is underway.

Surface Water Receiving Facilities-North - Engineering consultant is providing procurement support services.

Standpipe - Design is advancing to 90%, with the 90% plans expected by the end of September.

SURFACE WATER FACILITIES

Raw Water Intake Pump Station – Design is complete and construction continues.

Surface Water Treatment Plant – Design is complete and construction continues.

High Service Pump Station and Ground Storage Tanks – Design is complete and construction continues.

Fiber Optic Communications System – Consultant is working on 100% design submittal.

Construction Management and Inspection (CM&I) – The CM&I team is providing management and inspection for Transmission Segments T1, T2, T3, W1A, W1B, W2A and W2B.

Construction Administration and Inspection (CA&I) – The CA&I staff for the SWF is currently working with the CMAR and SJRA staff to review submittals for the RFI's and provide constant field monitoring and inspection of the systems being installed.

Construction Materials Testing Consultant (CMT) - The CMT staff for the SWF is currently working with the CMAR and CA&I staff to perform industry standard construction materials testing. Testing includes soil densities, compressive strength/properties of concrete placed, welding, coatings and masonry compressive strength.

Cathodic Protection – The cathodic protection consultant has completed their design effort for the transmission line segments. They also continue efforts for the construction phase of cathodic protection for the Surface Water Facilities.



2.0 SCHEDULE

2.2 STATE AGENCY COORDINATION

Segment C1B - TWDB completed review of plans and specifications, and issued a Plan Approval letter.

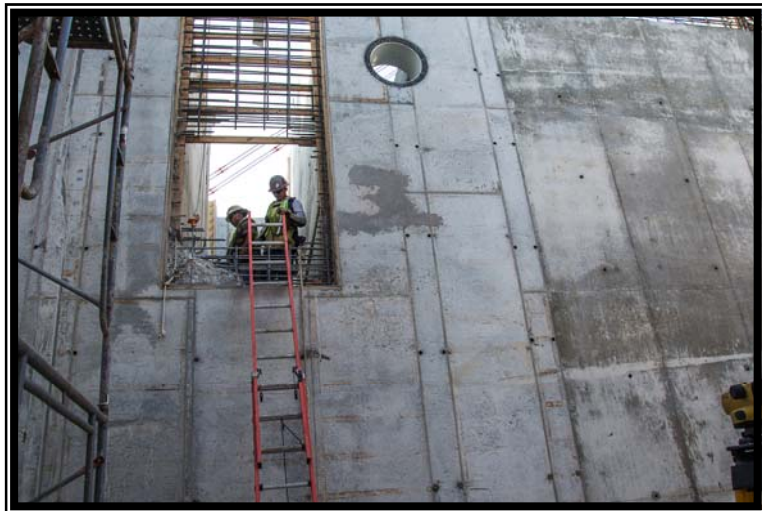
Segment C2 - TWDB completed review of plans and specifications, and issued a Plan Approval letter.

Surface Water Receiving Facilities - TWDB completed review of plans and specifications, and issued a Plan Approval letter for the South Receiving Facilities Project.

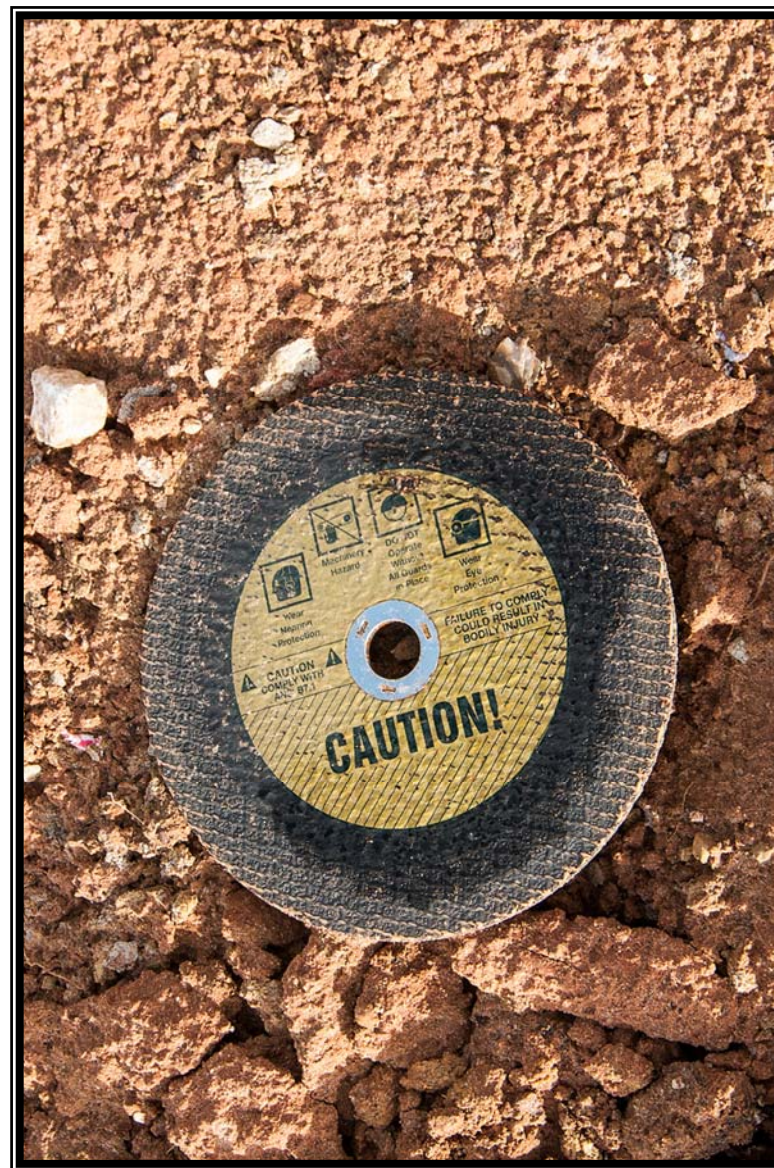
Segment W4 – TWDB completed review of plans and specifications, and issued a Plan Approval letter.

Segment W2B - TWDB reviewed final submitted documents and issued Notice to Proceed.

Request For Release of Funds From Escrow - TWDB approved the eighth request for release of escrowed funds. The released funds will cover construction of Transmission Segments W2B, as well as additional engineering services.



Surface Water Facilities - Construction Workers at GAC Building



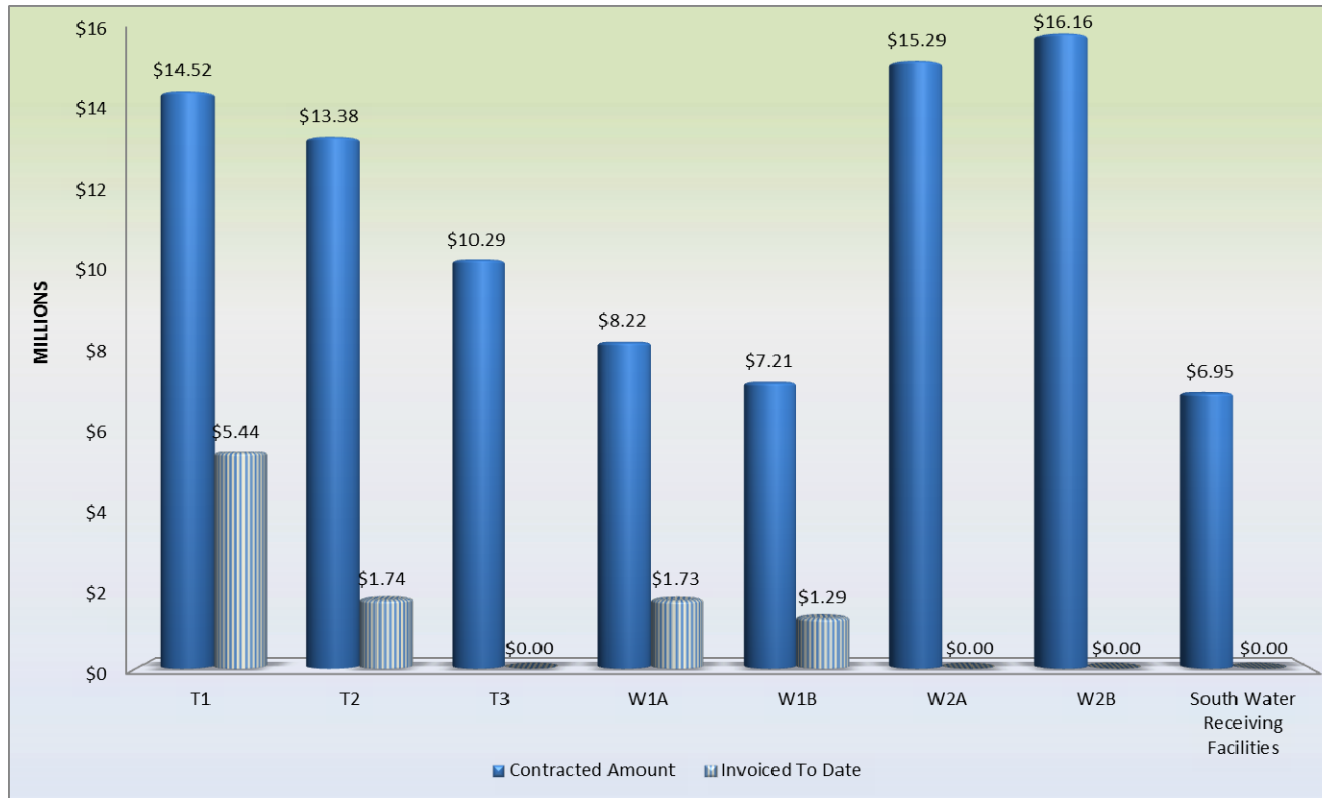
Discarded Cutting Blade

2.0 SCHEDULE (CONTINUED)

2.3 CONSTRUCTION

SURFACE WATER TRANSMISSION SYSTEM

To date, eight of eighteen construction contracts have been awarded. Construction contracts for the remaining waterline segments will continue to be awarded over the next four months and construction is scheduled to begin during the remainder of 2013. The graph and chart below shows the progress of Transmission Line Segments T1, T2, T3, W1A, W1B, W2A, W2B and the Surface Water Transmission South Water Receiving Facilities thus far.



Segment	T1	T2	T3	W1A	W1B	W2A	W2B	SWRF
Contracted Amount	\$14,521,937.14	\$13,383,925.25	\$10,287,576.00	\$8,222,000.50	\$7,213,544.50	\$15,288,526.00	\$16,161,600.00	\$6,952,400.00
Invoiced To Date	\$5,435,282.00	\$1,744,450.00	\$0.00	\$1,732,068.00	\$1,287,421.00	\$0.00	\$0.00	\$0.00
% Construction Complete	37%	13%	0%	21%	18%	0%	0%	0%



2.0 SCHEDULE (CONTINUED)

Segment T1 - Installation of 60-inch pipe by open cut operations continued from SJRA's G&A Building in a westerly direction along the toe of the dam, including the installation of the concrete encased section. A total of 5,603 linear feet of pipe has been installed related to this segment by the contractor during the month of August. The contractor continued tunneling operations at the spillway channel.

Segment T2 - Installation of steel casings under the golf cart tunnel and under Woodforest Parkway continued during this month. Pipe deliveries continue and contractor has begun open cut operations. A total of 3,263 linear feet of pipe has been installed related to this segment.

Segment T3 - Contractor continued with critical utility locations along this line segment as well as the construction surveying and clearing. Contractor is anticipating delivery of pipe and materials to begin in mid-September.

Segment W1A - Contractor's installation of 16-inch fusible PVC pipe continues along FM 2978. A total of 7,150 linear feet of pipe was installed by horizontal directional drilling throughout the month of August for this segment.

Segment W1B - Contractor completed open cut installation of 20-inch and 16-inch pipe in the Panther Creek Tributary easement between Kuykendahl and Alden Bridge. Trenchless construction was started at Kuykendahl and Research Forest, at Kuykendahl and Crown Ridge, and at Alden Bridge and the Panther Creek easement. A total of 4,903 linear feet of pipe has been installed during the month of August as it relates to this segment.

Segment W2A - Contractor continued performing critical utility locations and construction surveying, which required rolling lane closures along this line segment.

Segment W2B - Contractor was issued a Notice to Proceed on August 12, 2013. Work will begin in the area south of Woodlands Parkway, including construction surveying and critical utility locations. Implementation of temporary traffic detours will be performed during the next two months.

SURFACE WATER RECEIVING FACILITIES

City of Oak Ridge North - Construction for water plant modifications and surface water receiving facilities continued this month for the City of Oak Ridge North.

Surface Water Receiving Facilities-South - The construction contract for the Surface Water Receiving Facilities-South was approved by the SJRA Board on August 22, 2013. A Notice to Proceed and Preconstruction Conference is scheduled for September 9, 2013.



Surface Water Facilities—View from the Inside of the Ground Storage Tank

2.0 SCHEDULE (CONTINUED)

SURFACE WATER FACILITIES

Raw Water Intake - Structural Steel (Building Frame) is onsite and being erected.

Surface Water Treatment Plant - Progress continues at the Operations, Warehouse, Chemical, Electrical, Generator, Pretreatment, Membrane, and GAC Buildings. Structural earthwork and concrete placement are the main trades working on the site. The site electrical and process piping installation is currently underway as well.

High Service Pump Station - Progress continues with the installation of the exterior masonry structural system. Structural steel for the roof frame and overhead crane have been delivered.

Ground Storage Tanks - Ground Storage Tank Nos. 1 and 2 are both in their finishing stages. Accessories and the finish coat (paint) are currently being installed. Leak testing for both tanks will begin in mid-September.

The chart below represents the progress of the Surface Water Facilities through the month of August.

NAME OF PROJECT	CONTRACTED AMOUNT	INVOICED TO DATE	% CONSTRUCTION COMPLETE
SURFACE WATER FACILITIES	\$190,704,740	\$46,679,539	28%



Surface Water Facilities - Construction Site

3.0 PROCUREMENT

3.1 SOLICITATIONS

This month, solicitations for proposals for construction were made for the following:

- San Jacinto River Authority RFP 13-034 - Segment W3A Proposed 20-inch Water Transmission Line
- San Jacinto River Authority RFP 13-044 - Segment C1B Proposed 16-inch Water Transmission Line
- San Jacinto River Authority RFP 13-036 - Segment W4 Proposed 24-inch and 20-inch Water Transmission Line

3.2 CONTRACT AWARDS

The following contracts were awarded for construction this month:

- Construction contract for Surface Water Transmission South Water Receiving Facilities
- Work Order No. 8 for Final Design of Water Transmission Line Segments W2A and W2B
- Work Order No. 2 for monitoring piezometers during construction of GRP facilities and Water Transmission Line near Lake Conroe Dam

3.3 PROCESS AND PROCEDURES

The GRP Program continues to utilize traditional procurement methods for consultant services and alternative project delivery methods in the procurement of contractor services.

3.4 LOOK AHEAD

The following list provides a very general look ahead at known and anticipated GRP Program professional services and construction contractor solicitations, contract awards, contract/work order amendments, and assorted agreements such as utility relocations and easement encroachments. Solicitations may be combined, modified, or canceled, or time frames may be modified as deemed necessary.

- Work Order No. 9 for Preliminary and Final Design, Procurement, Topographic Survey, Metes and Bounds, and Geotechnical Investigation of Communications Conduit and Ground Boxes
- Construction Contract for Surface Water Transmission Line Segment C2
- Work Order No. 7 for Construction Phase Services during the Construction of Surface Water Transmission Line Segment C2
- Construction Contract for Surface Water Transmission Line Segment C3
- Work Order No. 6 Construction Phase Services during the Construction of Surface Water Transmission Line Segment C3
- Construction Contract for Surface Water Transmission Line Segment C4
- Work Order No. 6 Construction Phase Services during the Construction of Surface Water Transmission Line Segment C4
- Construction Contract for Surface Water Transmission Line Segment W4
- Work Order No. 6 Construction Phase Services during the Construction of Surface Water Transmission Line Segment W4
- Construction Contract for Surface Water Transmission North Water Receiving Facilities
- Work Order No. 6 Construction Phase Services during the Construction of Surface Water Transmission North Water Receiving Facilities
- Professional Services Agreement and Work Order No. 1 for GRP Rate Study
- Construction Contract for Surface Water Transmission Line Segment C1A
- Work Order No. 6 for Construction Phase Services by Design Consultant during construction of Surface Water Transmission Line Segment C1A
- Construction Contract for Surface Water Transmission Line Segment C1B
- Work Order No. 7 for Construction Phase Services by Design Consultant during construction of Surface Water Transmission Line Segment C1B
- Construction Contract for Surface Water Transmission Line Segment W3A
- Work Order No. 9 for Construction Phase Services by Design Consultant during construction of Surface Water Transmission Line Segment W3A



4.0 COST REPORT AND FINANCIAL CONSIDERATIONS

4.1 GRP PROGRAM AND GRP PROJECT CIP BUDGET(S)

Through this month, the GRP Program remains under its construction cost estimate of \$500,000,000, and forecasts continue to indicate it will be completed under budget (see also subsection 4.6 and [Exhibit 2](#)). A summary of the GRP Program's CIP budget and cost considerations as reported to the GRP Review Committee and the SJRA Board of Directors is provided as attached [Exhibit 2](#).

The SJRA GRP Division's Fiscal Year 2013 operating budget (revenue and expenditures) includes all normal and customary expenses for operating a utility-based, non-profit business, including debt service, and is developed annually for approval by the SJRA Board of Directors. Due to fiscal year end activities and processes, [Exhibit 8](#) will not be provided this month, however both August and September activities will be included in next month's report.

The SJRA Board of Directors has authorized bond funding for the GRP Program in the amount of \$512,400,358.49 (Net \$446,812,553.05; see also [Exhibit 4](#)). This funding allows the SJRA to secure all of the resources required to perform professional services, construction services, and procure long lead time equipment during the design phase of the GRP Program.

4.2 FINANCIAL REPORTS

[Exhibit 5](#) illustrates the funding sources presently applied towards the GRP Program CIP budget which include the following:

- 1.) Texas Water Development Board's (TWDB) Water Infrastructure Fund (WIF);
- 2.) The sale of open market Special Project Revenue Bonds, Series 2011;
- 3.) TWDB Dfund, Series 2011A;
- 4.) TWDB Dfund, Series 2012; and
- 5.) TWDB Dfund, Series 2012A

Approved funding to-date represents approximately 89.4% of the planned \$500,000,000.00 Program budget. Contracted commitments are summarized

in Table 4.1. The GRP Program's funding and forecasted expenditures are further detailed in attached [Exhibits 2, 3 and 4](#).

Please note that financial reports do not include investment income.

4.3 INVOICES/APPLICATIONS FOR PAYMENT

GRP Program Consultant Invoices and/or Construction Contractor Applications for Payment paid through the end of the report month are represented in Table 4.1 (Item F).

Table 4.1 - GRP Program Funding and Contracted Commitments Summary			
	Previous 7/31/2013	August 2013 Activity	Year to Date (Thru 8/31/13)
A. Approved Funding	512,400,358.49	\$0.00	512,400,358.49
B. Available Funding After Costs	446,812,553.05	\$0.00	446,812,553.05
C. Approved Contracts	380,486,973.80	7,147,373.26	387,634,347.06
D. Project Close Out	(839,675.81)	38,037.24	(801,638.57)
E. Uncontracted Funding	67,165,255.06	(7,185,410.50)	59,979,844.56
F. Invoices Paid	105,670,485.86	8,588,550.08	114,259,035.94
G. Remaining Funds	341,142,067.19	(8,588,550.08)	332,553,517.11

4.4 CONTRACT AMENDMENTS AND CHANGE ORDERS

Each of the GRP Program agreements, work orders, and amendments listed in Section 3.2 were presented at the GRP Review Committee and the SJRA Board of Directors meeting this month. Each item was authorized by the SJRA Board of Directors for execution by the SJRA General Manager.

4.0 COST REPORT AND FINANCIAL CONSIDERATIONS

4.5 CLAIMS

No claims were identified this month.

4.6 CIP CASH FLOW

The GRP Program CIP cash flow through calendar year 2015 reflects known expenditures through this month as seen in Table 4.1. Estimates for future expenditures are included in [Exhibit 2](#). All active and currently identified future GRP Program projects and initiatives are included in the cash flow. A graph of forecasted monthly expenditures from the referenced cash flow is attached as [Exhibit 3](#).

4.7 CIP BUDGET ESTIMATES AT COMPLETION

4.7.1 GRP Program

The **total gross funds** (including capitalized interest) required to execute Phase I of the GRP Program are currently estimated at \$564,335,358.49. Additionally, all current GRP Program contracts, including their respective SJRA Board of Director's approved budgeted amounts are listed in [Exhibit 6](#).

4.7.2 GRP Projects

The GRP Program projects remained within their approved contract budgets this month. [Exhibit 6](#) indicates each active GRP Program project and GRP Program contract.

4.8 LAND ACQUISITION

The GRP Program Team, with the support of its assorted land acquisition consultants, continued to make steady progress in acquiring the land and easements necessary for the surface water transmission system. The preparation of metes & bounds descriptions for easements along the transmission line routes continued and are nearing completion. Seventeen (17) easements were acquired in the month of August; one related to Segment T3, fourteen related to Segment W3, and two related to Segment W4. Negotiations to acquire other easements throughout the system are at varying stages of completion. A cumulative summary of easement acquisition activity is provided in [Exhibit 7](#).



Surface Water Facilities—Speed Limit Sign

5.0 QUALITY ASSURANCE

5.1 FINAL DESIGN

As final design nears completion and milestone submittals are received, the GRP Program Team will review and provide comments as applicable to each submittal. The review will be based on submittal compliance with the GRP Program's Design Standards and Criteria Manual, completeness per Program Management Plan (PMP) Section 14.0 – Quality Management and Section 21.0 – Design Management, and general project understanding.

5.2 PRE-CONSTRUCTION

The CM&I Team conducted pre-proposal conferences for Transmission Line Segments W4 and C1B. They assisted in the development of addenda, answered questions and participated in negotiations with the contractors.

5.3 CONSTRUCTION

Quality assurance efforts by the SJRA Construction Inspectors as well as the SWF CA&I and CMT consultants, continued this month with the continuation of SWF construction. There continue to be areas of construction underway for chemical containment and storage and dewatering facilities. Efforts included regular visits to the project site to monitor and document observed progress and confirm compliance with the construction contract. Similar quality assurance efforts by the SJRA Construction Inspectors and CM&I consultant for the SWRF and surface water transmission system continued this month.



**Safety Precautions - Worker Sign In/Sign out for Tunnel Pit Entry
and Fire Extinguisher**

6.0 EXHIBITS

Exhibit 1 - GRP Program Schedule

Exhibit 2 - GRP Program Estimate-At-Completion

Exhibit 3 - GRP Program Monthly Forecasted Expenditures

Exhibit 4 - GRP Program Fund Data

Exhibit 5 - Monthly GRP Program Financing Report

Exhibit 6 - GRP Program Current Authorizations

Exhibit 7 - Land Acquisition Summary

Exhibit 8 - GRP Schedule of Revenues & Expenses—Actual & Budget

Exhibit 9 - GRP Program Monthly Meeting Log

Exhibit 10 - Surface Water Facilities (SWF) Construction Photos

Exhibit 11 - Transmission Line Construction Photos



Segment T1 - Well Point Installation

Exhibit 1 - GRP Program Schedule

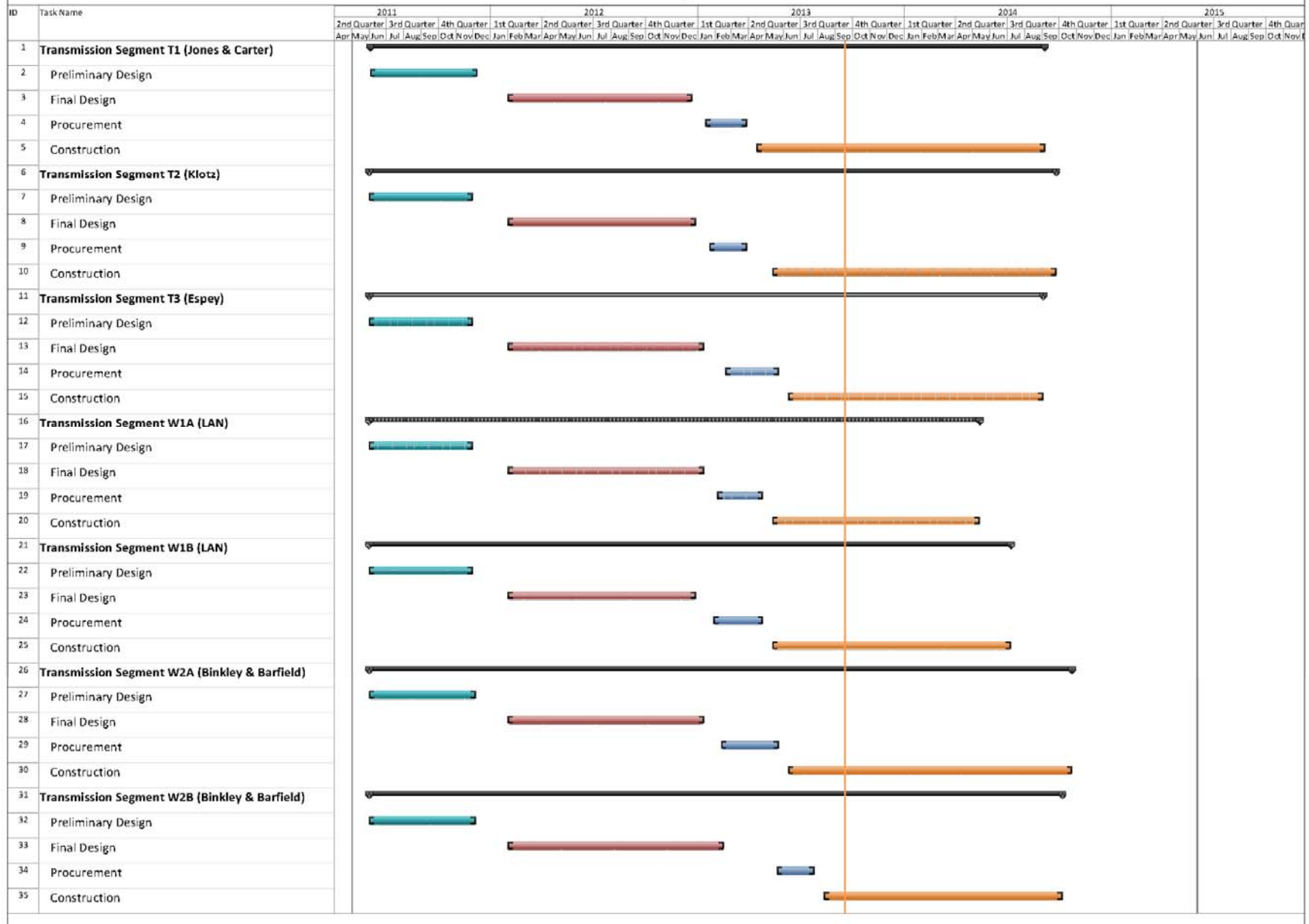


Exhibit 1 - GRP Program Schedule

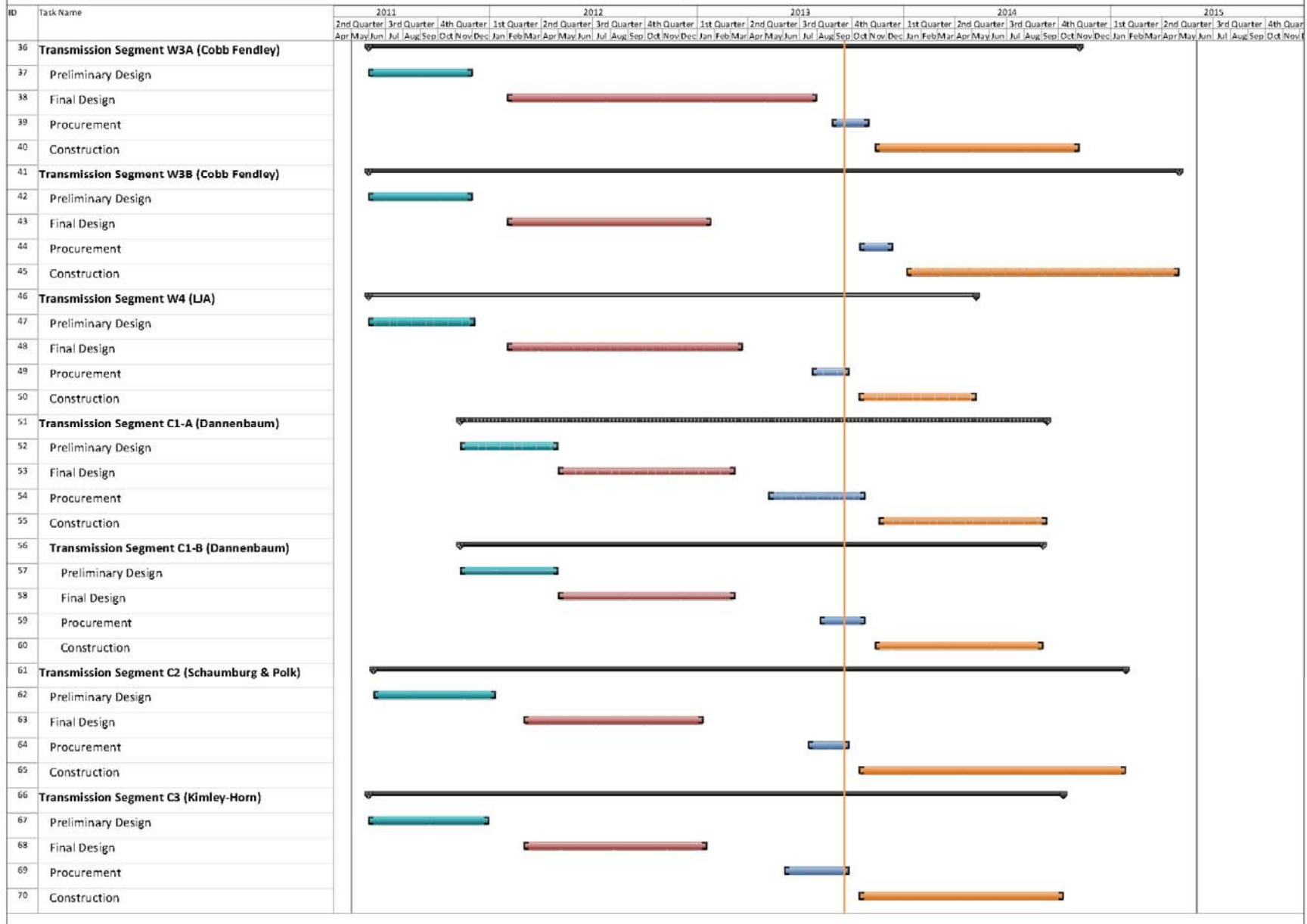


Exhibit 1 - GRP Program Schedule

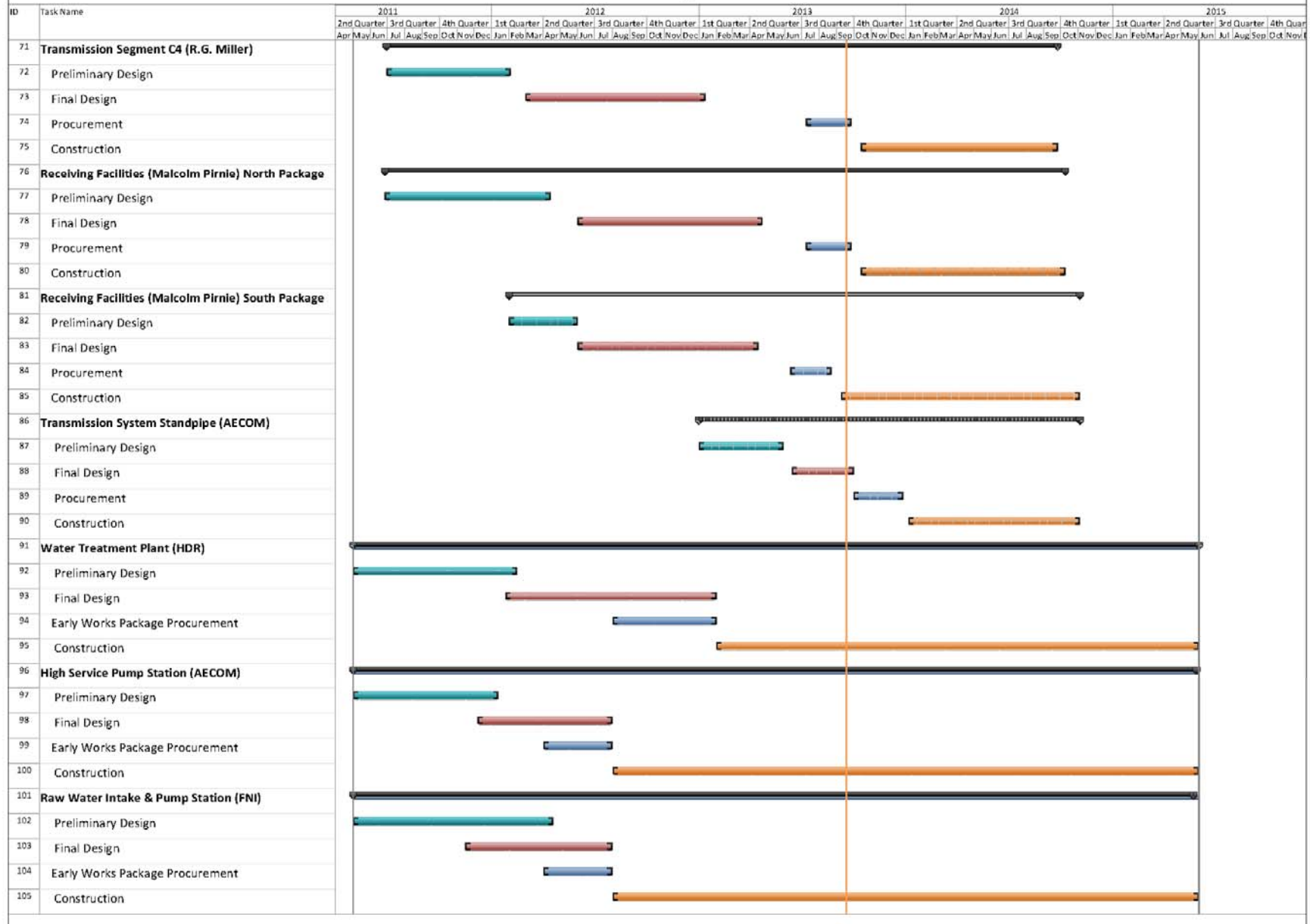


Exhibit 2

GRP Program Estimate-At-Completion As of August 31, 2013

SERVICES	ESTIMATE-AT-COMPLETION
Pre-Engineering Phase Services	\$ 4,692,437
(GRP Development, Environmental Studies, Pilot Plant, Surface Water Treatment Plant Site Survey)	
Engineering Phase Services	\$ 45,738,392
(Planning, Preliminary Engineering, Final Engineering, Geotechnical, Survey, Metes & Bounds, Subsurface Utility Investigation, Environmental)	
Construction Phase Services	\$ 28,098,215
(Engineering Services During Construction, Construction Management & Inspection [Transmission System], Construction Administration & Inspection [SWF], Material Testing)	
Construction	\$ 388,325,021
(Surface Water Transmission System, Raw Water Intake and Pump Station, Surface Water Treatment Plant, High Service Pump Station and Ground Storage Tanks, Surface Water Receiving Facilities, Infrastructure, Buildings, Roadways, Site Security, Access Roadways)	
Transmission Segment C1 - Construction	\$ 7,065,693
Transmission Segment C2 - Construction	\$ 9,465,579
Transmission Segment C3 - Construction	\$ 5,220,931
Transmission Segment C4 - Construction	\$ 5,371,167
Transmission Segment T1 - Construction	\$ 15,248,034
Transmission Segment T2 - Construction	\$ 14,053,125
Transmission Segment T3 - Construction	\$ 10,801,955
Transmission Segment W1 - Construction	\$ 16,207,322
Transmission Segment W2 - Construction	\$ 33,022,632
Transmission Segment W3 - Construction	\$ 18,882,977
Transmission Segment W4 - Construction	\$ 3,839,434
Transmission System Standpipe	\$ 1,756,241
Receiving Facilities - Construction	\$ 16,558,667
Surface Water Facilities CMAR (GMP)	\$ 190,704,740
Transmission System Fiber Optic - Construction	\$ 4,531,008
Permanent Access Roadway Construction	\$ 7,705,000
Building No. 1; Access Road; Vegetative Buffer; Construction Materials Testing; SWF Site Vegetation Management; Sanitary Sewer/Access Rd. Relocation	\$ 4,399,773
Other Offsite Construction (Transmission Line Utility Relocations, Receiving Facility Improvements)	\$ 16,786,998
Non-Project Specific Contingency	\$ 6,703,744
Program Management	\$ 10,722,757
(GRP Program Management, Survey, Geotechnical, Transient, Corrosion, Legal Consultants)	
Land Acquisition	\$ 12,928,302
(Legal, Appraisal, Title Research, Land Acquisition Consultants) ⁽¹⁾	
Total ⁽²⁾:	\$ 490,505,124

⁽¹⁾ Includes revisions to land acquisition cost estimates and recategorizing of contingency.

⁽²⁾ Bond issuance costs are not included.



Exhibit 3

GRP Program Monthly Forecasted Expenditures As of August 31, 2013

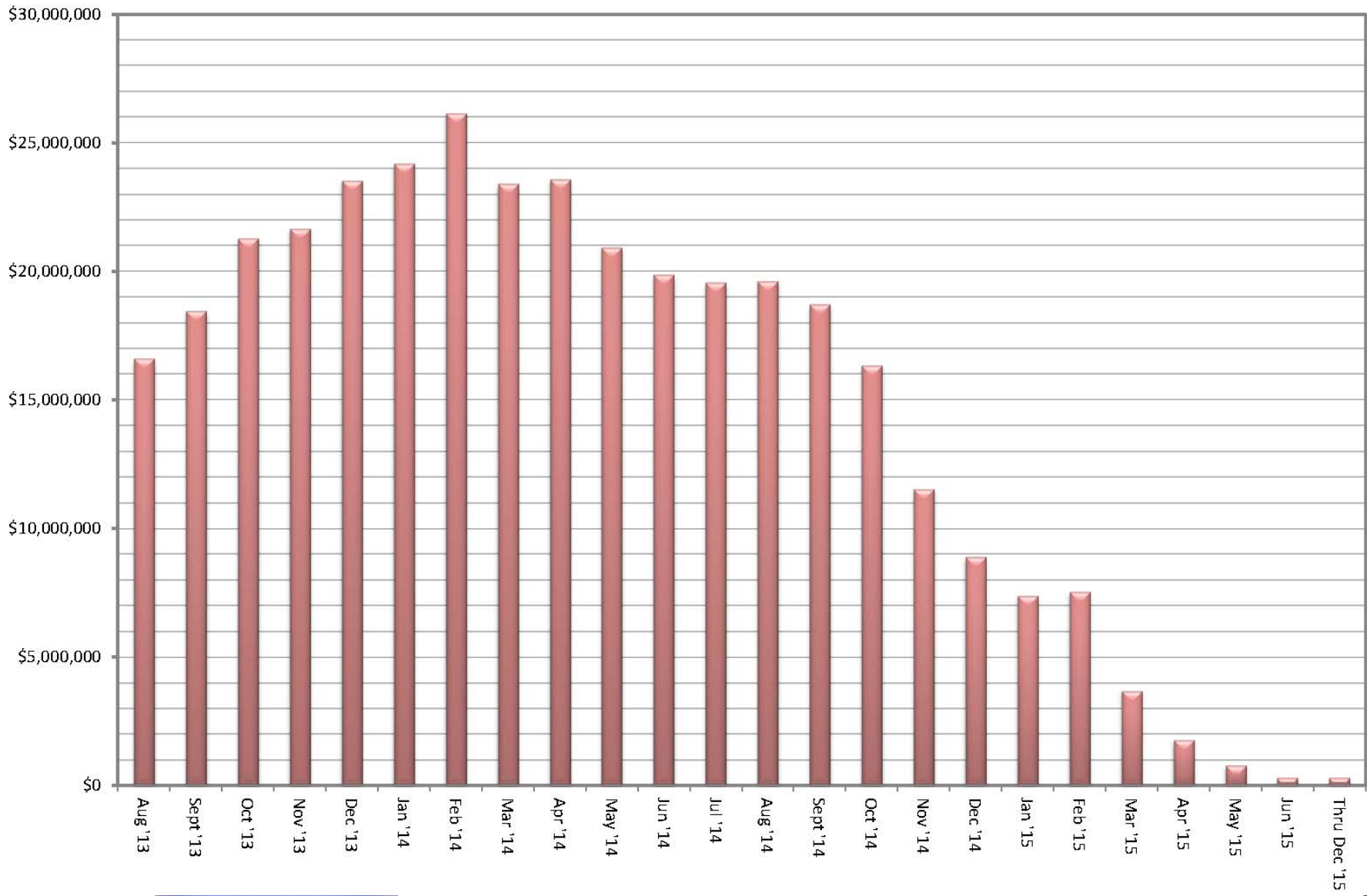


Exhibit 4

GRP Program Fund Data As of August 31, 2013

Funding Source	Amount Authorized by Board To-Date	Interest Rate	Bond Costs	Capitalized Interest	Debt Service Reserve Fund	Net Amount Currently Available	Pending Funding Source
TWDB WIF Bond Issue	\$ 21,500,000.00	.854% - 2.706%	\$ 470,337.08	\$ -	\$ -	\$ 21,029,662.92	
Open Market Bond Issue (Series 2011)	\$ 83,430,358.49	3% - 5.25%	\$ 2,049,764.39	\$ 7,858,241.52	\$ -	\$ 73,522,352.58	
TWDB Dfund Series 2011A	\$ 67,470,000.00	1.22% - 4.97%	\$ 751,195.33	\$ 5,166,233.00	\$ 3,859,151.00	\$ 57,693,420.67	
TWDB Dfund Series 2012	\$ 175,000,000.00	1.17% - 4.62%	\$ 971,769.13	\$ 12,869,175.00	\$ -	\$ 161,159,055.87	
TWDB Dfund Series 2012A	\$ 165,000,000.00	1.26% - 4.62%	\$ 952,269.99	\$ 14,139,669.00	\$ 16,500,000.00	\$ 133,408,061.01	
Subtotal Approved Amounts	\$ 512,400,358.49		\$ 5,195,335.92	\$ 40,033,318.52	\$ 20,359,151.00	\$ 446,812,553.05	\$ -
Future Series 2013 (Est.)	\$ 39,850,000.00	4.50%	\$ 628,750.00	\$ 3,214,292.00	\$ 3,073,489.00	\$ -	\$ 32,933,469.00
Future Series 2014 (Est.)	\$ 12,085,000.00	4.54%	\$ 321,200.00	\$ 1,004,698.00	\$ -	\$ -	\$ 10,759,102.00
Subtotal Future Amounts	\$ 51,935,000.00		\$ 949,950.00	\$ 4,218,990.00	\$ 3,073,489.00	\$ -	\$ 43,692,571.00
Totals	\$ 564,335,358.49		\$ 6,145,285.92	\$ 44,252,308.52	\$ 23,432,640.00	\$ 446,812,553.05	\$ 43,692,571.00

Notes:

1. These values do not include investment income.
2. Green items are estimates only.
3. Series 2011 bond costs include \$681,132.45 for bond insurance and \$459,709.50 for underwriter's discount.



Exhibit 5

Monthly GRP Program Financing Report

Fiscal Year 2013

Through August 31, 2013

	TWDB WIF Bond Issue	Open Market Bond Issue (Series 2011)	TWDB Dfund (Series 2011A)	TWDB Dfund (Series 2012)	TWDB Dfund (Series 2012A)	Totals
A. Program Budget						
Bond Issue Amount	\$ 21,500,000.00	\$ 83,430,358.49	\$ 67,470,000.00	\$ 175,000,000.00	\$ 165,000,000.00	\$ 512,400,358.49
Total Investment	\$ 21,500,000.00	\$ 83,430,358.49	\$ 67,470,000.00	\$ 175,000,000.00	\$ 165,000,000.00	\$ 512,400,358.49
B. Contracted Costs						
Contracts Completed	\$ 17,811,662.84	\$ 19,248,871.45	\$ 2,267,551.20	\$ -	\$ -	\$ 39,328,085.49
Current Contract Values	\$ 3,199,479.00	\$ 32,788,142.30	\$ 41,061,720.35	\$ 161,159,055.87	\$ 107,821,303.49	\$ 346,029,701.01
Change Orders	\$ -	\$ 2,103,555.17	\$ 173,005.39	\$ -	\$ -	\$ 2,276,560.56
Project Close Out	\$ (315,554.78)	\$ (486,083.79)	\$ -	\$ -	\$ -	\$ (801,638.57)
Total	\$ 20,695,587.06	\$ 53,654,485.13	\$ 43,502,276.94	\$ 161,159,055.87	\$ 107,821,303.49	\$ 386,832,708.49
C. Expenditures						
Paid Previous Fiscal Years	\$ 19,966,012.81	\$ 24,949,084.37	\$ 478,705.50	\$ -	\$ -	\$ 45,393,802.68
Paid Current Fiscal Year	\$ 479,591.74	\$ 16,861,436.94	\$ 13,037,670.39	\$ 35,745,194.60	\$ 2,741,339.59	\$ 68,865,233.26
Issuance Costs	\$ 470,337.08	\$ 2,049,764.39	\$ 751,195.33	\$ 971,769.13	\$ 952,269.99	\$ 5,195,335.92
Debt Service Reserve Fund	\$ -	\$ -	\$ 3,859,151.00	\$ -	\$ 16,500,000.00	\$ 20,359,151.00
Capitalized Interest	\$ -	\$ 7,858,241.52	\$ 5,166,233.00	\$ 12,869,175.00	\$ 14,139,669.00	\$ 40,033,318.52
Total	\$ 20,915,941.63	\$ 51,718,527.22	\$ 23,292,955.22	\$ 49,586,138.73	\$ 34,333,278.58	\$ 179,846,841.38
D. Remaining						
Uncontracted Funds	\$ 334,075.86	\$ 19,867,867.45	\$ 14,191,143.73	\$ (0.00)	\$ 25,586,757.52	\$ 59,979,844.56
Fund Balance *	\$ 584,058.37	\$ 31,711,831.27	\$ 44,177,044.78	\$ 125,413,861.27	\$ 130,666,721.42	\$ 332,553,517.11

*Excluding net investment income



Exhibit 6

GRP Program Current Authorizations As of August 31, 2013

Surface Water Transmission System - Consultant Services

Project	Firm	Amount Authorized by Board
T1	Jones & Carter	\$ 2,202,879.75
T2	Klotz Associates	\$ 1,878,727.49
T3	Espey	\$ 1,892,322.47
W1	LAN	\$ 2,729,523.15
W2	Binkley & Barfield	\$ 3,112,328.19
W3	Cobb Fendley	\$ 3,592,808.00
W4	LIA	\$ 1,226,216.17
C1	Dannenbaum	\$ 815,523.94
C2	Schaumburg & Polk	\$ 1,236,623.21
C3	Kimley Horn	\$ 807,780.10
C4	RG Miller	\$ 309,230.05
WRFs	Malcom Pirnie/Arcadis	\$ 2,313,685.57
CM&I	Kellog Brown & Root	\$ 8,124,254.62
Subtotal - Surface Water Transmission System		\$ 30,241,902.71

Surface Water Facilities - Consultant Services

Project	Firm	Amount Authorized by Board
WTP	HDR Engineering	\$ 18,583,396.92
HSPS	AECOM	\$ 4,799,416.39
StandPipe	AECOM	\$ 192,281.00
RWI&PS	Freese & Nichols	\$ 3,954,773.35
CA&I	CDMSmith	\$ 5,348,633.00
Subtotal - Surface Water Facilities		\$ 32,878,500.66

Program Consultant Services & Other Projects

Project	Firm	Amount Authorized by Board
Program Management	Brown & Gay	\$ 10,695,245.06
Program Survey	Landtech	\$ 514,524.00
Program Geotechnical	Raba Kistner	\$ 145,260.00
Prog Transient Analyses	AECOM	\$ 284,178.11
Access Rd/Misc Service	ACES	\$ 860,610.60
SWF Surveying	S&V Surveying	\$ 66,875.00
Land Acq	KDM	\$ 401,592.70
Land Acq	PAS	\$ 1,413,334.88
Program Environmental	Halff Associates	\$ 1,063,698.87
Program Fiber Optics	EMA	\$ 736,357.00
Program Corrosion	V&A Consulting Engineers	\$ 866,676.00
Program Services & Projects	Multiple	\$ 5,673,735.44
Subtotal - Program Consultant Services & Other Projects		\$ 22,722,087.66



Exhibit 6 (con't)

GRP Program Current Authorizations As of August 31, 2013

Active or Completed Construction Contracts

Project	Firm	Amount Authorized by Board
GRP Bldg No. 1	Brookstone	\$ 2,008,673.00
Bldg No. 1/Aqua Tx CMT	Aviles Engineering	\$ 64,343.15
Landscape Buffer	Key-Scape Landscape	\$ 53,090.00
Temp Access Road	Lindsey Construction	\$ 977,583.60
Access Road CMT	Terracon Consultants	\$ 10,359.70
Access Road Overlay and Detention	AAA Asphalt	\$ 412,284.59
Access Road Landscape	TreeScapes	\$ 34,165.00
Aqua Texas Sewer	Randy Roan Construction	\$ 535,181.17
Bldg No. 1 Fiber Line	Preferred Technologies	\$ 231,157.56
Surface Water Plant (CMAR)	McCarthy	\$ 190,704,740.00
SWF CMT	Geotest	\$ 1,976,659.00
Transmission Sytem Utility Relocations	Various	\$ 1,992,417.46
Transmission System CMT (T3, W1, W2, W3, W4)	Aviles	\$ 1,601,330.00
Transmission System CMT (T1, T2, C1, C2, C3, C4)	Terracon	\$ 1,006,711.25
Transmission Segment T1	S.J. Louis Construction of Texas Ltd	\$ 14,521,937.14
Transmission Segment T2	Texas Sterling Construction Company	\$ 13,383,928.25
Transmission Segment T3	S.J. Louis Construction of Texas Ltd	\$ 10,287,576.00
Transmission Segment W1A	Huff & Mitchell, Inc.	\$ 8,222,000.50
Transmission Segment W1B	Texas Sterling Construction Company	\$ 7,213,544.50
Transmission Segment W2A	Texas Sterling Construction Company	\$ 15,288,526.00
Transmission Segment W2B	Texas Sterling Construction Company	\$ 16,161,600.00
Receiving Facilities South	CSA	\$ 6,952,400.00
Miscellaneous	Other Construction Contracts, Permits, Fees, etc.	\$ 307,806.10
Subtotal - Construction Contracts		\$ 293,948,013.97

Totals

	Amount Authorized by Board
Surface Water Transmission System - Consultant Services	\$ 30,241,902.71
Surface Water Facilities - Consultant Services	\$ 32,878,500.66
Program Consultant Services & Other Projects	\$ 22,722,087.66
Active or Completed Construction Contracts	\$ 293,948,013.97
Total	\$ 379,790,505.00



Exhibit 7

GRP Program Land Acquisition Summary As of August 31, 2013

Project	Anticipated Number of Easements to Acquire	Easements Acquired This Month	Total Easements Acquired and Filed
Transmission System Segment T1	62	0	61
Transmission System Segment T2	0	0	0
Transmission System Segment T3	22	1	9
Transmission System Segment C1	16	0	10
Transmission System Segment C2	77	0	28
Transmission System Segment C3	32	0	17
Transmission System Segment C4	4	0	2
Transmission System Segment W1	32	0	17
Transmission System Segment W2	8	0	0
Transmission System Segment W3	178	14	93
Transmission System Segment W4	7	2	3
Totals:	438	17	240



Exhibit 8

San Jacinto River Authority

Groundwater Reduction Plan Schedule of Revenues & Expenses - Actual & Budget

For the Twelve Months Ending August 31, 2013

Due to the end of the Fiscal Year and its processes, Exhibit 8 will not be provided in this report, however next month's report will include both August and September activities.



Exhibit 9

GRP Program Monthly Meeting Log For August 2013

Meeting	Subject of Meeting	Location	Date	Participants
Pre-Proposal Meeting for Segment C2	RFP 13-024	G&A Building	8/01/2013	SJRA Staff, GRP Program Team and Potential Offerors
Proposal Opening - North Receiving Facilities	RFP 13-019	G&A Building	8/6/2013	SJRA Staff, GRP Program Team and Offerors
Proposal Opening - Transmission Line Segment C4	RFP 13-026	G&A Building	8/6/2013	SJRA Staff, GRP Program Team and Offerors
Pre-Proposal Conference - Transmission Line Segment W4	Segment W4	G&A Building	8/6/2013	SJRA Staff, GRP Program Team and Potential Offerors
Proposal Opening - CMMS Software and Implementation Services	RFP 13-073	G&A Building	8/13/2013	SJRA Staff, GRP Program Team and Offerors
Proposal Opening for Stand Pipe Water Storage Tank	RFP 13-045	G&A Building	8/14/2013	SJRA Staff, GRP Program Team and Offerors
GRP Review Committee Meeting	Agenda Items for August	G&A Board Room	8/19/2013	GRP Review Committee, GRP Staff, SJRA Staff and General Public
Pre-Proposal Conference Transmission Line Segment C1B	RFP 13-044	G&A Building	8/20/2013	SJRA Staff, GRP Program Team and Potential Offerors
Proposal Opening for Transmission Line Segment W4	RFP 13-036	G&A Building	8/20/2013	SJRA Staff, GRP Program Team and Offerors
Proposal Opening for Transmission Line Segment C2	RFP 13-024	G&A Building	8/20/2013	SJRA Staff, GRP Program Team and Offerors
SJRA Board of Directors Meeting	Agenda Items for August	G&A Board Room	8/22/2013	SJRA Board of Directors, SJRA Staff and General Public
Land Acquisition Conference Calls	Land Acquisition	GRP Building 1, Andrews Kurth	Weekly	Andrews Kurth, SJRA
W1A, W1B and W2A Progress Meetings	W1A, W1B and W2A	GRP Building 1	Weekly	SJRA Staff, GRP Program Team and Consultant Team
Segments T1 and T2 Progress Meetings	T1 and T2	GRP Building 1	Weekly	SJRA Staff, GRP Program Team and Consultant Team



Exhibit 9 (Con't)

GRP Program Monthly Meeting Log For August 2013

Meeting	Subject of Meeting	Location	Date	Participants
W1A and W1B Monthly Construction Meetings	W1A and W1B	GRP Building 1	Monthly	SJRA Staff, GRP Program Team and Consultant Team
Segments T3, W3, W4, C1, C2 and C3 Monthly Status Meetings	Segments T3, W3, W4, C1, C2 and C3	GRP Building 1	Monthly	SJRA Staff, GRP Program Team and Consultant Team
Segment T3 Weekly Progress Meeting	Segment T3	GRP Building 1	Weekly	SJRA Staff, GRP Program Team and Consultant Team



Surface Water Facilities Construction Photos



EXHIBIT 10 SWF Construction Photos

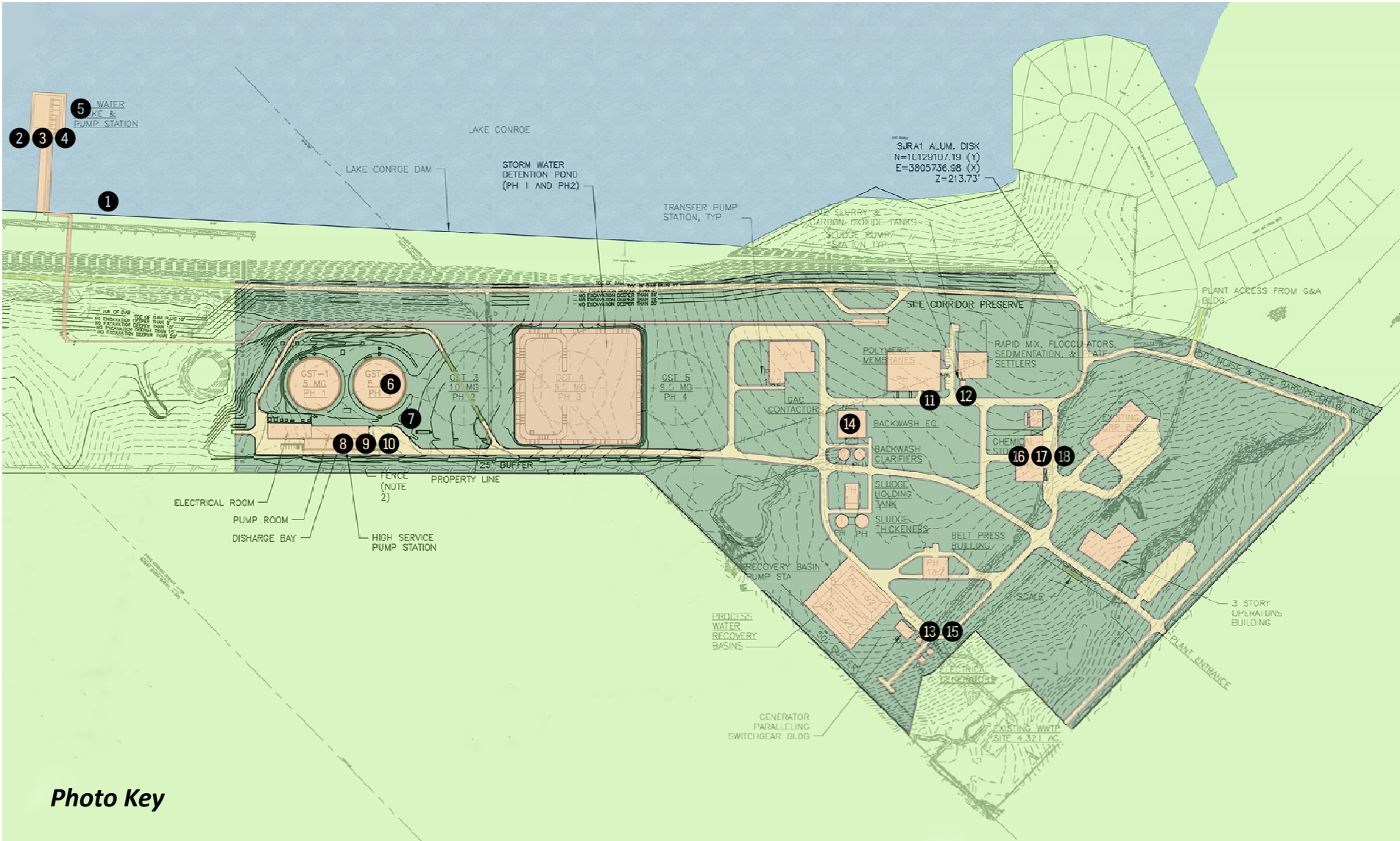


Photo Key



EXHIBIT 10 SWF Construction Photos



Overall Aerial View of Surface Water Plant Site - August 23, 2013

EXHIBIT 10 (con't) SWF Construction Photos



①②③④ Building Steel Erection Begins at Raw Water Pump Station

EXHIBIT 10 (con't) SWF Construction Photos



⑤ *Raw Water Pump Station - Steel Supports Used for Deck Construction (to be removed) and Deck Opening for Future Pump*

EXHIBIT 10 (con't) SWF Construction Photos



⑥ *Inside Ground Storage Tank No. 2 Showing Baffle Walls and Supports*

EXHIBIT 10 (con't) SWF Construction Photos



7 8 9 10 *Aerial View of Ground Storage Tanks And High Service Pump Station*

EXHIBIT 10 (con't) SWF Construction Photos



① *Ground Storage Tank Nos. 1 and 2 - Exterior Coating Near Completion on Ground Storage Tank No. 2*

EXHIBIT 10 (con't) SWF Construction Photos



8 High Service Pump Station - Inside the Pump Room



9 High Service Pump Station - Electrical Room



10 High Service Pump Station - Scaffolding and Building Masonry Work

EXHIBIT 10 (con't) SWF Construction Photos



⑩ *Backfilling and Initial Wall Installation at Membrane Facilities; Inset Shows Foundation for Future Chemical Tank*

EXHIBIT 10 (con't) SWF Construction Photos



12 Pretreatment Facility



13 Seal Slab Installation at Equalization Basin



14 Installation of the Generator Building



15 Conduit Installation at Electrical Switchgear Building

EXHIBIT 10 (con't) SWF Construction Photos



14 15 Aerial View of Generator and Switchgear Building Foundations

EXHIBIT 10 (con't) SWF Construction Photos



16 17 18 *Conduit and Rebar Installation at Chemical Facilities*

Transmission Line Construction Photos Segment T1



EXHIBIT 11 Transmission Line Construction Photos

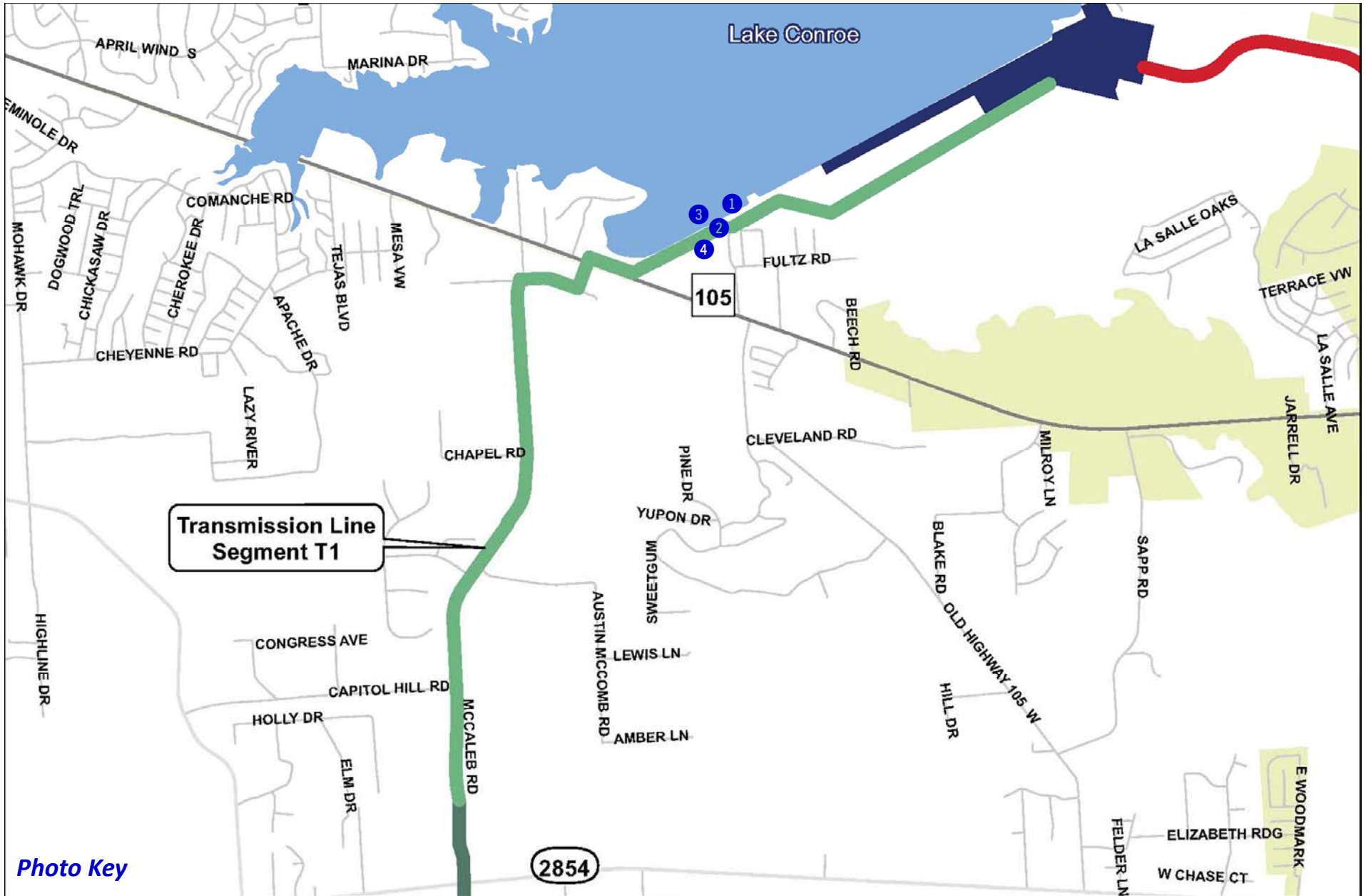


EXHIBIT 11 (con't) Transmission Line Construction Photos



① *Completed Segment T1 Pipe Installation at G&A Building*

EXHIBIT 11 (con't) Transmission Line Construction Photos



2 Segment T1 Section Below Dam Showing 60-inch Pipe Concrete Encasement



3 Segment T1 Dewatering System Installation

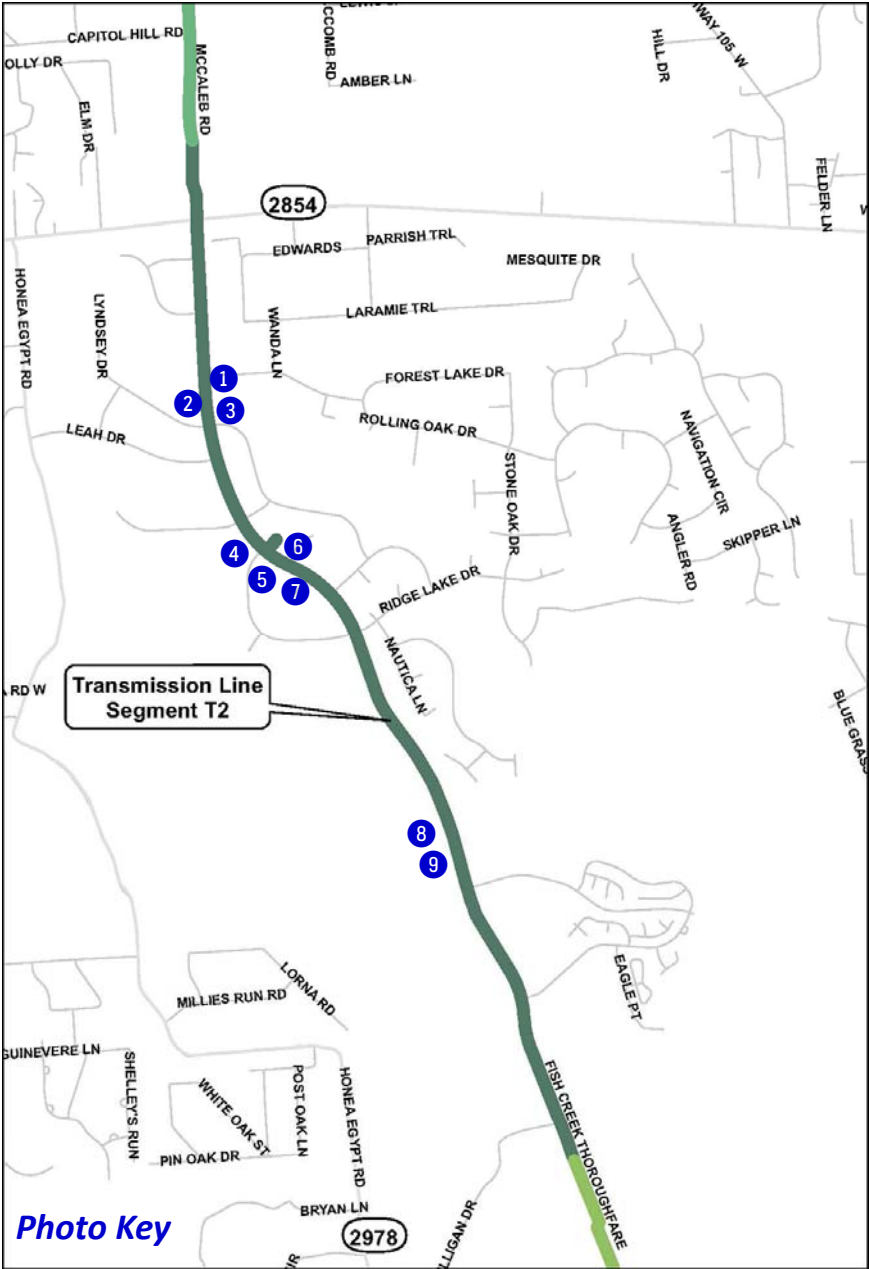


4 Segment T1 Dewatering Operation

Transmission Line Construction Photos Segment T2



EXHIBIT 11 (con't) Transmission Line Construction Photos



1 Groundwater Dewatering Along Segment T2



EXHIBIT 11 (con't) Transmission Line Construction Photos



② Tunnel Pit Installation near Overhead Power Lines



③ Construction Proximity to Traffic Along Fish Creek Thoroughfare



④ Dump Trucks Wait to Remove Spoils from Open-cut Construction



⑤ Workers Divert Traffic Along Fish Creek Thoroughfare

EXHIBIT 11 (con't) Transmission Line Construction Photos



⑥ 60-inch Pipe Installed by Open Cut Construction Along Fish Creek Thoroughfare

EXHIBIT 11 (con't) Transmission Line Construction Photos



789 60-inch Pipe Installation Along Fish Creek Thoroughfare

Transmission Line Construction Photos Segment W1A



EXHIBIT 11 (con't) Transmission Line Construction Photos



EXHIBIT 11 (con't) Transmission Line Construction Photos



① ② ③ Segment W1A Along FM 2978 - Trenchless Construction of 16-inch Waterline

**Transmission Line Construction Photos
Segment W1B**



EXHIBIT 11 (con't) Transmission Line Construction Photos

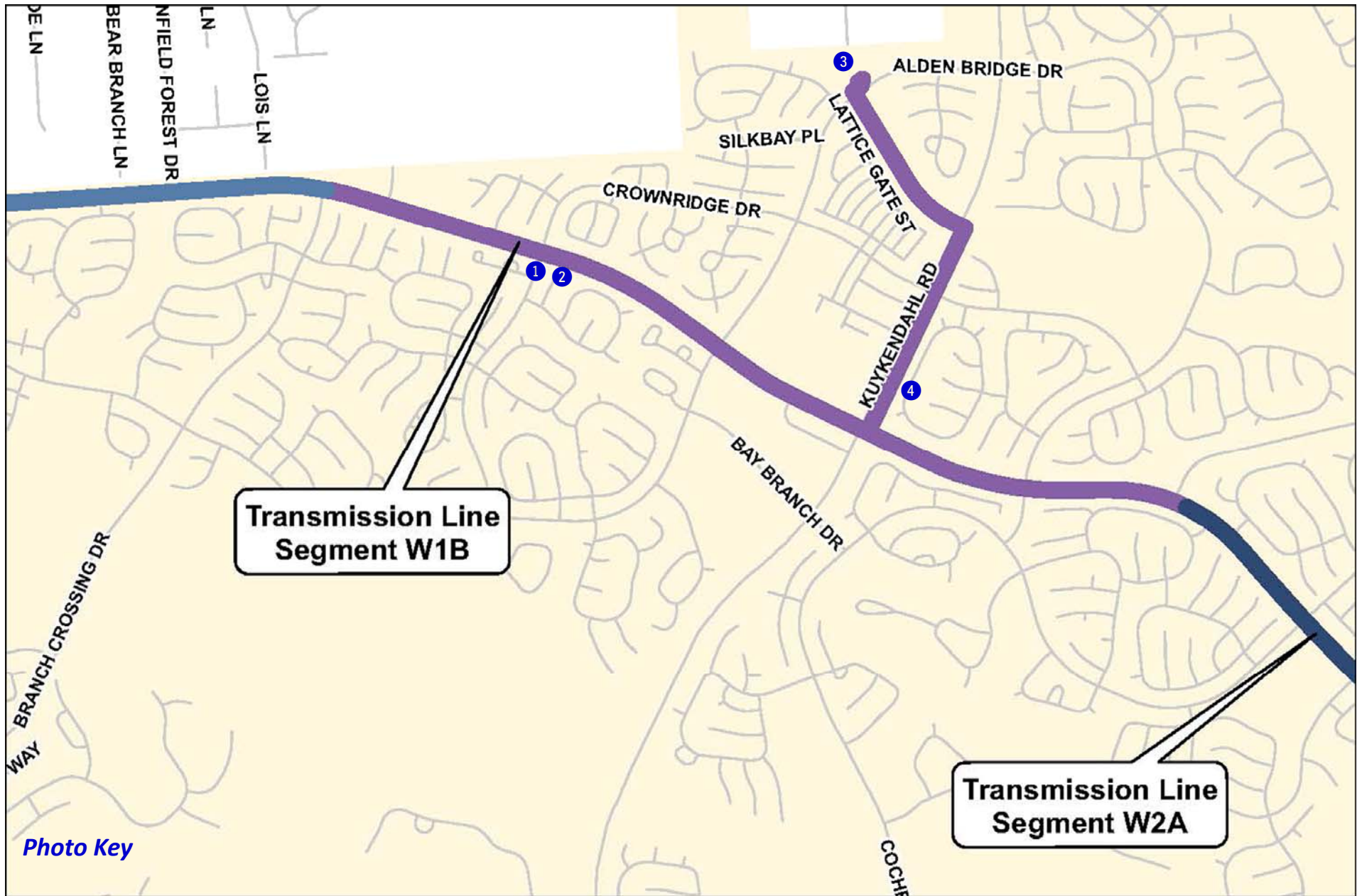
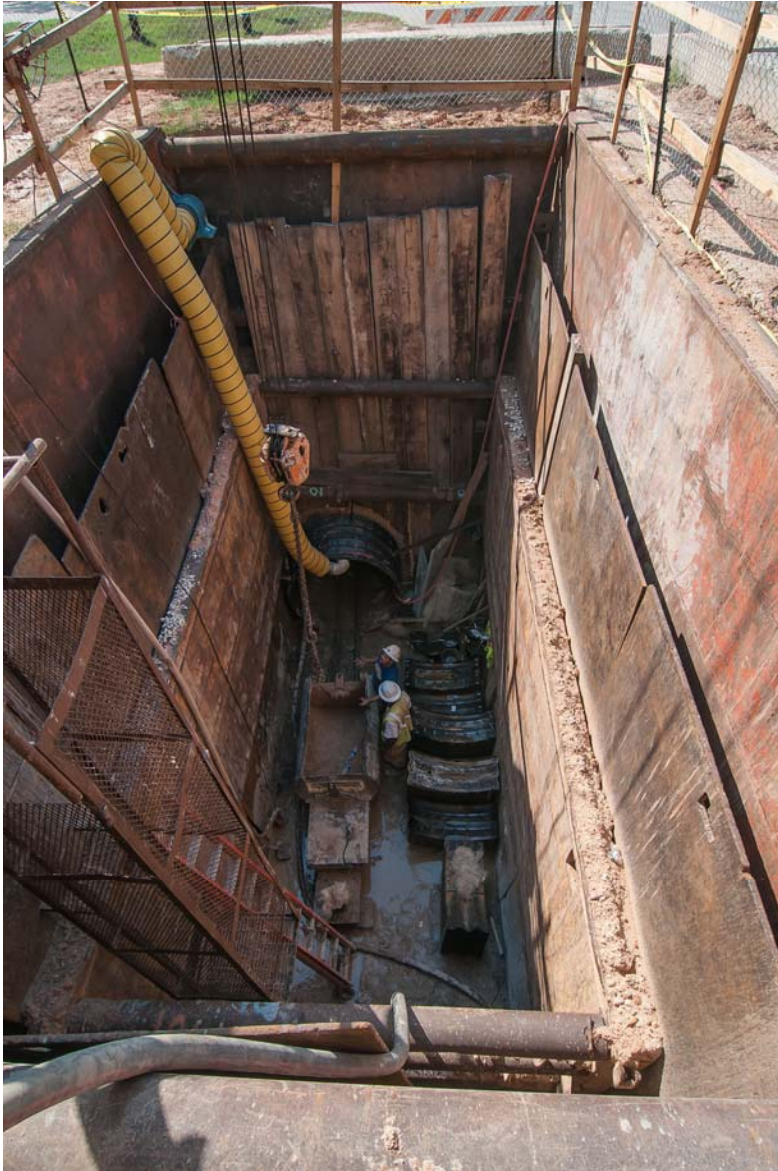


EXHIBIT 11 (con't) Transmission Line Construction Photos



①② Segment W1B Installation of Tunnel Shaft for Boring Under Crownridge at Research Forest

③ Segment W1B Installation of Tunnel Shaft for Boring Under Creek Along Alden Bridge

EXHIBIT 11 (con't) Transmission Line Construction Photos



④ *Segment W1B Narrow Construction within Easement along Kuykendahl*