



GROUNDWATER REDUCTION PLAN PROGRAM

MONTHLY PROGRESS REPORT - APRIL 2015



TABLE OF CONTENTS

Table of Contents	1	4.0 Cost Report and Financial Considerations	12
Acronyms and Definitions	2	4.1 GRP Program and GRP Project CIP Budget(s)	12
1.0 Planning	3	4.2 Financial Reports	12
1.1 Strategic	3	4.3 Invoices/Applications for Payment	13
1.2 Engineering and Construction	3	4.4 Contract Amendments and Change Orders	14
1.3 Meetings	3	4.5 Claims	14
2.0 Project Activities	4	4.6 CIP Cash Flow	14
2.1 Engineering	4	4.7 CIP Budget Estimates at Completion	14
2.2 State Agency Coordination	4	4.7.1 GRP Program	14
2.3 Surface Water Transmission System Project Data	5	4.7.2 GRP Projects	14
2.4 Surface Water Transmission System Construction Progress	9	5.0 Quality Assurance	15
2.5 Surface Water Facility Construction Progress and Project Data	10	5.1 Final Design	15
2.6 Facility Improvements	11	5.2 Pre-Construction	15
3.0 Procurement	12	5.3 Construction	15
3.1 Solicitations	12	6.0 Exhibits	16
3.2 Contract Awards	12	7.0 GRP Program Extensions	46
3.3 Process and Procedures	12	7.1 Engineering	46
3.4 Look Ahead	12		



ACRONYMS AND DEFINITIONS

ACRONYMS

CA&I	Construction Administration and Inspection
CCT	Construction Communication Team
CIP	Capital Improvement Project
CM&I	Construction Management and Inspection
CMAR	Construction Manager At Risk
CMT	Construction Materials Testing
CSB / P	Competitive Sealed Bid / Proposal
EA	Environmental Assessment
EAC	Estimate At Completion
FONCS	Fiber Optics Network Communication System
GIS	Geographic Information System
GRP	Groundwater Reduction Plan
GST	Groundwater Storage Tank
HSPS	High Speed Pump Station
LSGCD	Lone Star Groundwater Conservation District
LVGU	Large Volume Groundwater User
NTP	Notice To Proceed
PER	Preliminary Engineering Report
PMP	Program Management Plan
PVC	Polyvinyl Chloride
PSA	Professional Services Agreement
QA	Quality Assurance
RCCP	Reinforced Concrete Cylinder Pipe
RFB / Q / P	Request For Bids / Qualifications / Proposals
RWI / RWPS	Raw Water Intake / Raw Water Pump Station
SJRA	San Jacinto River Authority
SOQ	Statement of Qualifications
SWF	Surface Water Facilities (SWTP, HSPH and RWI)
SWRF	Surface Water Receiving Facilities
SWTP	Surface Water Treatment Plant
TCEQ	Texas Commission on Environmental Quality

DEFINITIONS

TWDB	Texas Water Development Board
TXDOT	Texas Department of Transportation
WIF	Water Infrastructure Fund
GROUNDWATER REDUCTION PLAN (GRP)	The document developed and filed with the LSGCD indicating SJRA's plan to reduce the permitted 2009 groundwater pumpage of its GRP Participants by 30%. The GRP is administered by the SJRA, including any supplements, revisions, or amendments.
GRP PROGRAM TEAM	SJRA staff, Program Management Consultant (Brown & Gay Engineers, Inc.) staff, and technical consultants working interdependently toward meeting the goals of the Groundwater Reduction Plan.
GRP ADMINISTRATOR	The SJRA General Manager's designee who administers the SJRA Groundwater Reduction Plan and GRP Contract with GRP Participants.
GRP CONTRACT	Contract between the SJRA and a Participant to be included in the SJRA's efforts to meet the surface water conversion requirements mandated by the LSGCD.
GRP EXTENSION PROJECTS	Safe harbor related projects not related to Phase 1, but tracked independently of Phase 1.
JOINT GRP	GRP which is prepared to include (takes into account) LVGUs who have executed a GRP Contract with the SJRA to join the SJRA's GRP. Contracted LVGUs obtain LSGCD groundwater reduction regulation compliance through the SJRA's Joint GRP without preparing and submitting a GRP.
LARGE VOLUME GROUNDWATER USER(S) (LVGU)	Any person or entity that, through a single well or a combination of wells, actually produces or is authorized by permit(s) issued by the LSGCD to produce 10 million gallons or more of groundwater annually on or after January 1, 2008.
PARTICIPANT(S)	Regulated User(s) that enters into and remains subject to a written agreement with the SJRA to be included in the SJRA's GRP and includes the legal successors or assigns of Participant(s).
REGULATED USER(S)	Any public or private entity or person that is or becomes subject to the District Regulatory Plan established by the LSGCD and includes any amendments, revisions or supplements thereto as may be adopted by the LSGCD.
SJRA GRP DIVISION	Division of the SJRA responsible for GRP compliance, and the management, administration, operation and maintenance of the surface water facilities and surface water transmission system.



1.0 PLANNING

The GRP Program Team meets regularly for the purposes of setting performance expectations and goals of the GRP Program, identifying the efforts required to achieve these objectives, evaluating the effectiveness of such efforts, and modifying those efforts based upon both internal and external performance evaluations.

1.1 STRATEGIC

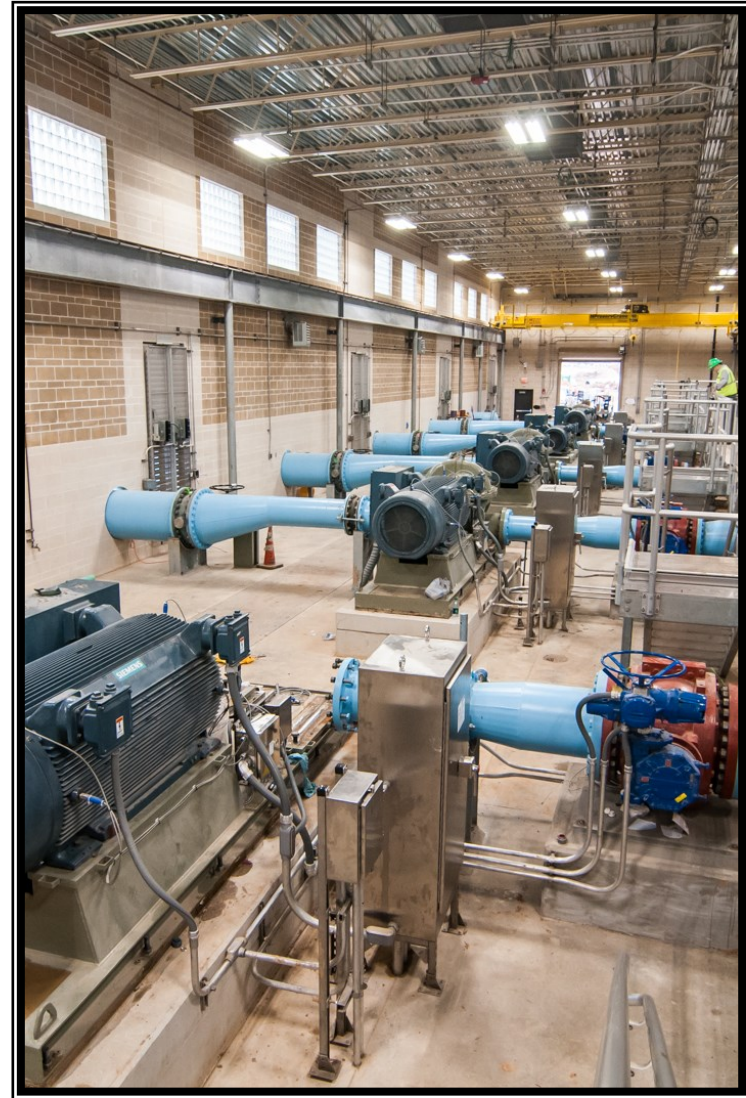
During April, work on the GRP start-up plan continued. Communications continued with Participants who will be receiving surface water at start-up in order to coordinate activities and assure that lines of communication are effective. In addition, the GRP Program Team continued looking at closing out contracts on construction that has reached final completion. Remaining funds will be reallocated to fund projects such as the W3C extension to MUD 99, permanent access road, and costs associated with system start-up.

1.2 ENGINEERING AND CONSTRUCTION

All procurement services for construction proposals for Phase I, with the exception of the permanent access road, have been completed and sixteen transmission line construction contracts have been awarded. The engineering consultants will continue to provide construction phase services by reviewing submittals and requests for information as work proceeds.

1.3 MEETINGS

Various meetings continued this month with the GRP Program Team. A listing of these meetings is attached as ***Exhibit 8***.



Overview of pumps at the High Service Pump Station

2.0 PROJECT ACTIVITIES

Currently, the GRP Program remains on schedule for the delivery of treated surface water to select Joint GRP Participants on or before January 1, 2016. A simplified GRP Program schedule of remaining work can be found in attached *Exhibit 1*.

2.1 ENGINEERING

SURFACE WATER TRANSMISSION SYSTEM

Construction Management and Inspection (CM&I) – The CM&I consultant provided management and inspection services for Transmission Segments T1, T2, T3, W1A, W1B, W2A, W2B, W3A, W3B, W3D, W4, C1A, C1B, C2, C3, C4, WRF-N, WRF-S, and the Standpipe.

Construction Materials Testing Consultant (CMT) - CMT consultant is currently working with CM&I staff to perform industry standard construction materials testing on remaining projects.

SURFACE WATER FACILITIES

Permanent Access Road - Design is complete. Engineering consultant work order for construction phase services to be considered at the May, 2015 SJRA Board of Directors meeting.

Construction Administration and Inspection (CA&I) – The CA&I consultant for the SWF is currently working with the CMAR and SJRA staff to review submittals and RFI's, and provide constant field monitoring and inspection of the systems being installed.

Construction Materials Testing Consultant (CMT) - The CMT consultant for the SWF is currently working with the CMAR and CA&I staff to perform industry standard construction materials testing on remaining work.

2.2 STATE AGENCY COORDINATION

The Texas Water Development Board (TWDB) modified its monthly field inspection schedule of the Surface Water Facilities and Transmission Line construction sites to occur quarterly, therefore, the next scheduled inspection will be in June, 2015. SJRA submitted to TWDB requests for release of retainage for the Operations Building and partial release of retainage for Transmission Line Segment W1A. TWDB approved plans and specifications

for construction of the permanent surface water plant access road project.



Workers installing sample lines at the High Service Pump Station



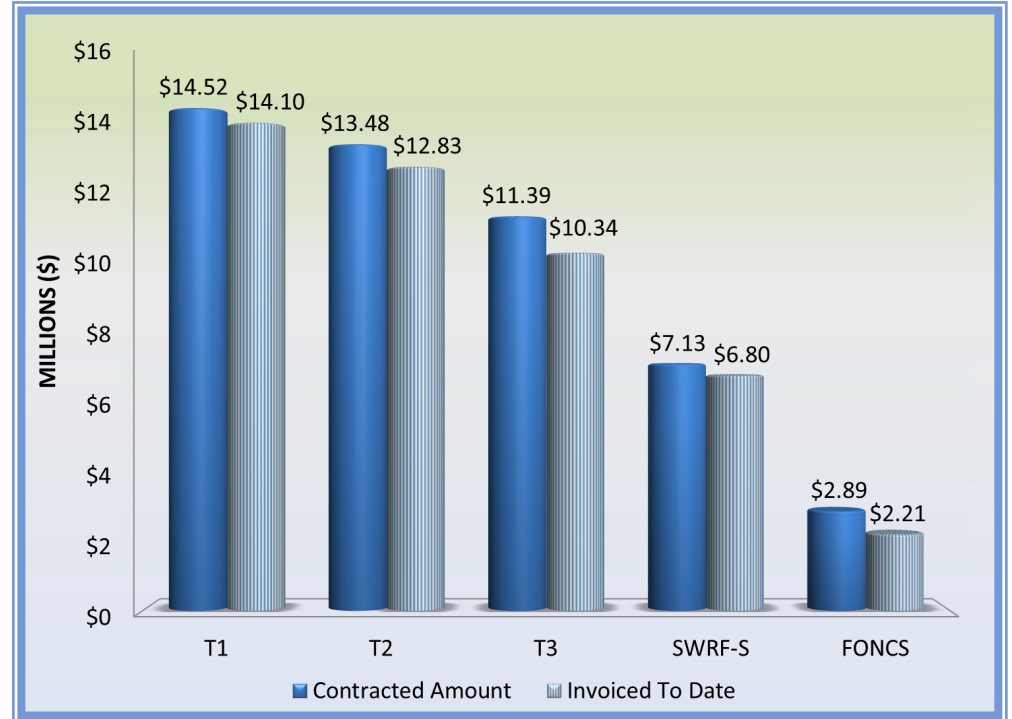
Workers installing twin storm sewer pipe west of the Surface Water Facility

2.0 PROJECT ACTIVITIES (CONTINUED)

2.3 SURFACE WATER TRANSMISSION SYSTEM PROJECT DATA

The month of April concluded with the installation of approximately 275,201 feet or 52.1 miles of various sized concrete coated steel pipe, PVC pipe, and bar wrapped concrete mortar pipe along the majority of the transmission line segments. This represents approximately 99% of the total planned pipe to be installed throughout Montgomery County on or before January 1, 2016. The following graphs and charts show the progress of Transmission Line Segments T1, T2, T3, W1A, W1B, W2A, W2B, W3A, W3B, W3D, W4, C1A, C1B, C2, C3, C4, Surface Water Transmission North Water Receiving Facilities (SWRF-N), Surface Water Transmission South Water Receiving Facilities (SWRF-S), Standpipe, and Fiber Optics Network Communication System (FONCS) thus far.

Crews erecting steel beams at the Maintenance Building



Surface Water Transmission System Total	Progress To Date
Total Contracted Amount	\$150,182,261.22
Total Invoiced To Date	\$139,098,035.56
Total % Complete Based on Invoice Amount	93%

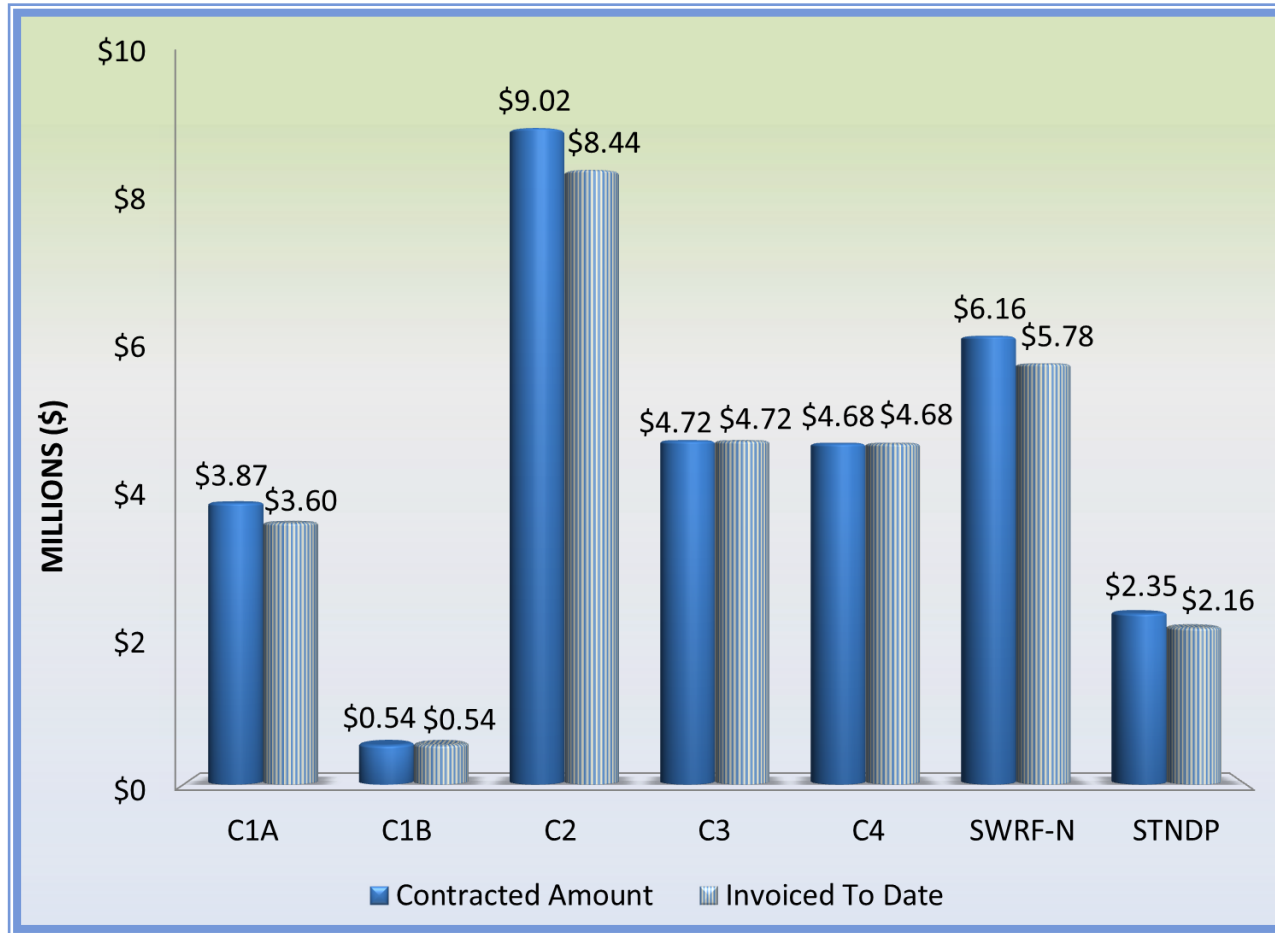
Segment	T1	T2	T3	SWRF-S	FONCS
Contracted Amount	\$14,521,937.14	\$13,475,718.33	\$11,393,193.97	\$7,127,383.00	\$2,885,432.35
Invoiced To Date	\$14,097,492.64	\$12,825,963.20	\$10,338,118.34	\$6,800,844.57	\$2,212,633.94
% Complete	97%	95%	91%	94%	77%

2.0 PROJECT ACTIVITIES (CONTINUED)



Segment	W1A	W1B	W2A	W2B	W3A	W3B	W3D	W4
Contracted Amount	\$8,222,000.50	\$7,213,544.50	\$16,340,258.02	\$16,161,600.00	\$7,880,207.50	\$8,114,716.70	\$1,840,986.00	\$3,656,604.23
Invoiced To Date	\$7,740,806.66	\$6,754,717.01	\$15,272,089.82	\$14,875,816.49	\$7,532,196.60	\$7,156,254.03	\$170,615.10	\$3,395,122.67
% Complete	94%	94%	93%	92%	96%	88%	9%	93%

2.0 PROJECT ACTIVITIES (CONTINUED)

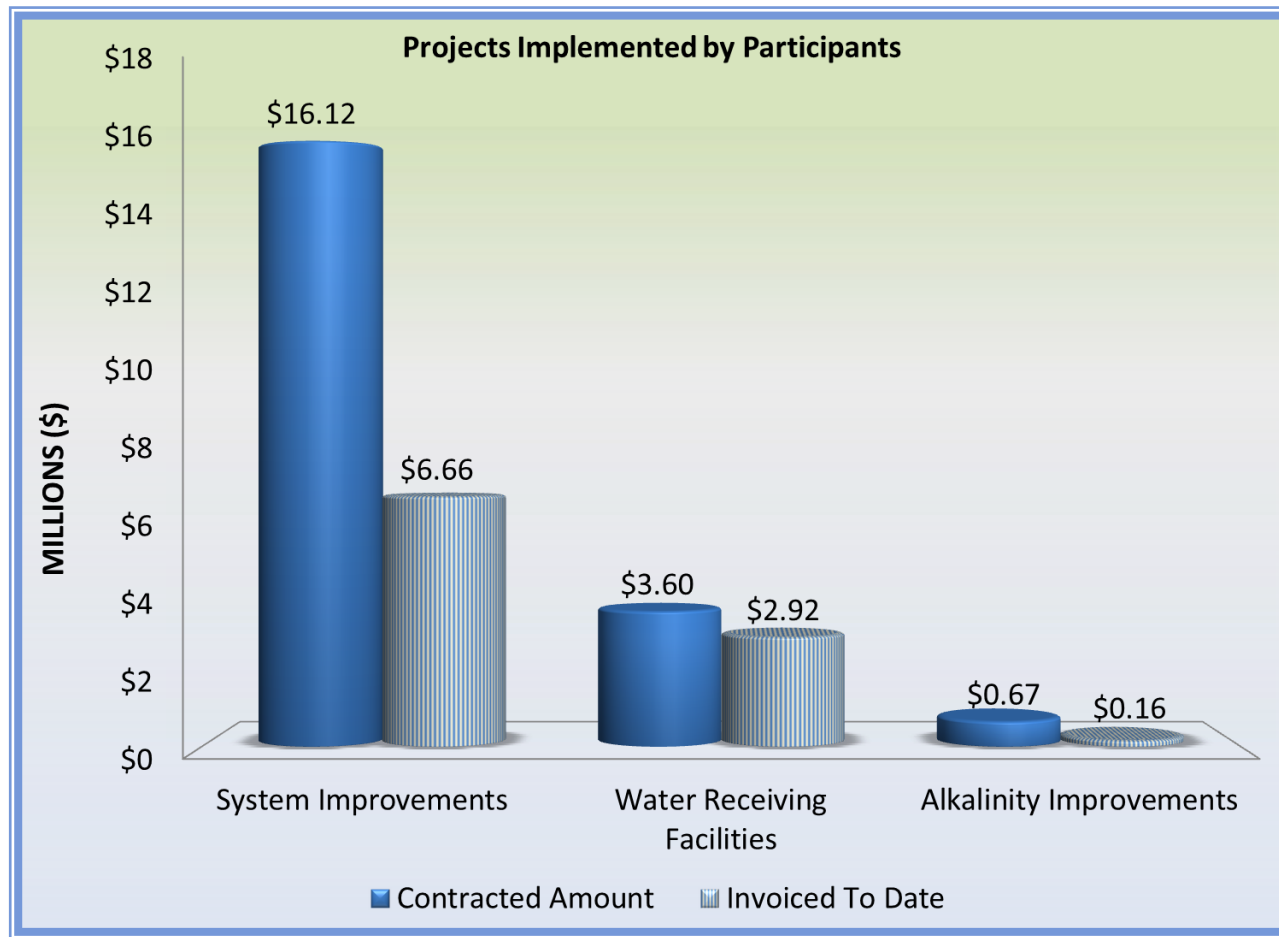


Segment	C1A	C1B	C2	C3	C4	SWRF-N	STANDPIPE
Contracted Amount	*\$3,869,767.26	\$544,393.60	*\$9,015,577.30	*\$4,720,966.14	*\$4,683,615.13	\$6,160,184.55	\$2,354,175.00
Invoiced To Date	\$3,596,844.75	\$544,393.60	\$8,440,970.27	\$4,720,966.14	\$4,683,615.13	\$5,781,672.60	\$2,156,902.00
% Complete	93%	100%	94%	100%	100%	94%	92%

*Includes Board approved changed orders that will not be reflected in Exhibit 6 until approved by Texas Water Development Board



2.0 PROJECT ACTIVITIES (CONTINUED)



Project	System Improvements	Water Receiving Facilities	Alkalinity Improvements
Contracted Amount	\$16,117,794.31	\$3,603,916.98	\$674,997.00
Invoiced To Date	\$6,655,516.65	\$2,916,776.08	\$164,669.00
% Complete	41%	81%	24%

2.0 PROJECT ACTIVITIES (CONTINUED)

2.4 SURFACE WATER TRANSMISSION SYSTEM CONSTRUCTION PROGRESS

Significant progress continues to be made each month with regard to pipe installation on each of the sixteen Surface Water Transmission Line Segments. The chart below represents the overall pipe installation statistics through the month of April.

Transmission Line System Pipe Installation Statistics to Date	
Total Piping Installed to Date	52.1 miles
Total % of Pipe Installed to Date	99%

Segment T1 - Contractor continued to address substantial completion punchlist items. Final completion walkthrough is scheduled for May 7, 2015.

Segment T2 - Contractor continued to address substantial completion punchlist items. Final completion walkthrough is scheduled for May 7, 2015.

Segment T3 - Contractor installed approximately 1,597 feet of 54-inch waterline by open-cut from Windcrest Estates Boulevard north along Honea Egypt Road to Woodland Oaks Drive.

Segment W3A - Contractor continued addressing final completion punchlist items.

Segment W3B - Contractor completed the tie-in on both sides of the drainage channel north of North Head Drive. Contractor completed installation of 3-inch fiber optic conduit between the tunnel under the playground and the Montgomery County Drainage District's ditch. Contractor continued hydrostatic pressure testing.

Segment W3D - Contractor installed approximately 170 feet of 16-inch pipe and 3-inch fiber optic conduit along Maplewood Drive from Robinson Road just north of Wickwood Drive and completed drilling the pilot hole from Wickwood Drive to Castlewood Drive by horizontal directional drill. Contractor performed site restoration and installed sod near Oak Ridge North Water Plant No. 1 and adjacent properties along Robinson Road.

Segment C2 - Contractor completed hydrostatic pressure testing. Contractor continued to install fiber optic conduit and ground-boxes. Contractor continued to perform site restoration along waterline and to pour concrete pads around manholes and flushing hydrants.

Standpipe - Contractor continued site grading and final preparation for the parking lot and asphalt pavement. The Standpipe tank inner liner was completed and filled with water to begin hydrostatic pressure testing to monitor for leaks. The security gate and fencing installation was completed. (See Exhibit 11)

Fiber Optic Communications System - Contractor completed the fiber optic cable installation along FM 830 on Segment C4 and completed the installation of fiber optic cable along Research Forest from Shadowbend to the intersection of Segments W2A and W2B.

SURFACE WATER RECEIVING FACILITIES

Surface Water Receiving Facilities - North - No new activity. Awaiting the delivery of water from the Surface Water Facility.

Surface Water Receiving Facilities - South - No new activity. Final walkthrough to be scheduled.



2.0 PROJECT ACTIVITIES (CONTINUED)



Worker inspecting chemical trench piping at the Surface Water Treatment Facility

2.5 SURFACE WATER FACILITY CONSTRUCTION PROGRESS AND PROJECT DATA

Raw Water Intake - Contractor installed sample and water line support brackets on the bridge and began to install chemical line heat trace. The air burst system solenoids were installed and tested. Contractor completed the exterior elevated walkway and began to blast and paint the fire line. The installation of conduit, wire, and terminated wire at the air burst system solenoid continued. Contractor trimmed out lighting and power, as well as continued to install the louver and exhaust fan motor starters.

Surface Water Treatment Plant - Construction activities continued at the Operations, Chemical, Power Supply, Generator, Pretreatment, Membrane, Backwash Equalization, Process Water Recovery Basin, Belt Filter Press Building, Blower Building, and Granular Activated Carbon (GAC)

facilities. Testing and commissioning the electrical and mechanical equipment continued at the various facilities. Contractor continued to install valves and pump meters and to test various piping, install conduit, and to pull wire. At the Operations Building, the contractor continued addressing punchlist items. The contractor installed handrails and placed the concrete curb. The wheel chair ramp was painted.

High Service Pump Station - Contractor performed start-up tests and installed air compressor pipe for High Service Pump Nos. 1 and 4. Contractor continued to install conduit and pull wire for the pump room.

Ground Storage Tanks - Contractor pulled wire for the tank instruments and the power on the tank roof. At the Pressure Relief Valve Station, the contractor continued to install pressure relief valve conduit, terminal boxes, and supports.

Site Work - Contractor placed concrete at various locations, including the sidewalk west of the Membrane Building and the truck loading pad and curb at the Chemical Building. Contractor began clearing along the fence line and the installation of the site perimeter fence. The removal of the temporary fence along the toe of dam road was started. Contractor continued to perform sanitary and drain line tests. Contractor continued to install the chemical trench and associated chemical and sample pipe at various locations. The chemical and sample pipe were encased with concrete along the dam slope. The placement of trench covers and backfill adjacent to the trenches continued.

Name of Project	Contracted	Invoiced To Date	% Complete Based
Surface Water	\$190,704,740.00	\$178,290,789.00	93.5%

2.0 PROJECT ACTIVITIES (CONTINUED)

2.6 FACILITY IMPROVEMENTS

Various projects are being implemented by GRP Participants on behalf of the GRP. These include system improvements that are required due to the delivery of surface water to the Participants' water receiving facilities and improvements at their wastewater treatment plants to address differences in alkalinity of surface water based wastewater.

SYSTEM IMPROVEMENTS

Conroe Water Distribution - A Supplemental Agreement was approved on November 11, 2013 whereby the GRP will reimburse the City of Conroe for water system improvements needed for the distribution of surface water throughout the City's water system. The chart below reflects the status of the City's water system improvements:

Water Plant (WP)	Completion Amount
WP No. 6 (Northwest)	15.7%
WP No. 14 (Wedgewood)	2.0%
WP No. 15 (Silver Springs)	1.4%
WP No. 20 (Pollock)	5.7%
WP No. 21 (Little Egypt)	10.6%
WP No. 22 (FM 3083)	11.4%

16-inch Well Collection Line from Woodlands WW9 and WW10 - Substantial completion punchlist items were completed. Final completion walkthrough completed; final closeout documents being processed.

College Park 16-inch Well Collection Line and 12-inch Water Line Loop - Substantial completion punchlist items completed. Final completion walkthrough completed; final closeout documents being processed.

WATER RECEIVING FACILITIES

Oak Ridge North Water Plant - The City of Oak Ridge North's portion of this project is complete. Waiting for tie-in of SJRA waterline.

Rayford Road MUD Water Plants - Work to reroute the chlorine booster pump source water is in progress. Remote terminal unit (RTU) and booster pump panels were ordered.

Mid-South Water Plant - Sidewalks and housekeeping pads were poured. The flow control valve was rotated to the horizontal position. Air conditioning and lighting systems are operational. Flow meters and fiber panels were installed. The gaseous chlorine injection system is 50% complete.

ALKALINITY IMPROVEMENTS

Woodlands Alkalinity Improvements - The construction contract began advertising on March 6, 2015. A pre-proposal meeting was held on March 25, 2015. On April 2, 2015, one (1) proposal was received. The total proposal was 49% higher than the Engineer's Opinion of Construction Cost. The proposal was rejected and the construction contract was not awarded. An alternative method is being investigated.

Southern Montgomery County (SMC) MUD - A Supplemental Agreement with SMC MUD was approved by the SJRA Board on October 30, 2014. Preliminary design neared completion. Work continued on the engineering report, site drawings, and construction details, along with the electrical design.



Workers installing chemical trench covers at the Chemical Building

3.0 PROCUREMENT

3.1 SOLICITATIONS

The following advertisements for solicitations occurred for April:

- No solicitations occurred for this month.

3.2 CONTRACTS/AGREEMENTS/WORK ORDER APPROVALS

The following contracts/agreements/work orders were approved in April:

- Interlocal Agreement with The Woodlands Township for Reforestation

3.3 PROCESS AND PROCEDURES

The GRP Program will utilize traditional procurement methods for consultant services and alternative project delivery methods in the procurement of contractor services, if those services are required.

3.4 LOOK AHEAD

The following list provides a very general look ahead at known and anticipated GRP Program professional services and construction contractor solicitations, contract awards, agreements, and/or contract/work order amendments. Solicitations may be combined, modified, or canceled, or time frames may be modified as deemed necessary.

- Construction contract for access road for the GRP Program
- Work Order No. 7 for Construction Phase Services during construction of access road
- Work Order No. 6 for Construction Materials Testing during construction of access road
- Amendment No. 3 to Work Order No. 1 for Professional Construction Administration and Inspection Services for the Surface Water Facility
- Work Authorization Amendment No. 5 for Construction Manager at Risk for the Surface Water Facility
- Interlocal Agreement with Montgomery County for land acquisition
- Proposed amended Rate Order for GRP Participants

4.0 COST REPORT AND FINANCIAL CONSIDERATIONS

4.1 GRP PROGRAM AND GRP PROJECT CIP BUDGET(S)

Through this month the GRP Program remains under its construction cost estimate of \$500,000,000 and forecasts continue to indicate it will be completed under budget (see also subsection 4.6 and ***Exhibit 2***). A summary of the GRP Program's CIP budget and cost considerations as reported to the GRP Review Committee and the SJRA Board of Directors is provided as attached ***Exhibit 2***.

A summary of the SJRA GRP Division's Fiscal Year 2015 operating budget (revenue and expenditures) for the month of April is provided as ***Exhibit 7***. The budget includes all normal and customary expenses for operating a utility-based, non-profit business, including debt service, and is developed annually for approval by the SJRA Board of Directors.

The SJRA Board of Directors has authorized bond funding for the GRP Program in the amount of \$552,250,358.49 (Net \$479,746,021.87); see also ***Exhibit 4***. This funding allows the SJRA to secure all of the resources required to perform professional services, construction services, and procure long lead time equipment during the design phase of the GRP Program.

4.2 FINANCIAL REPORTS

Exhibit 5 illustrates the funding sources presently applied towards the GRP Program CIP budget.

- 1.) TWDB Water Infrastructure Fund (WIF)
- 2.) The sale of open market Special Project Revenue Bonds, Series 2011
- 3.) TWDB Dfund, Series 2011A
- 4.) TWDB Dfund, Series 2012
- 5.) TWDB Dfund, Series 2012A
- 6.) TWDB Dfund, Series 2013
- 7.) Operating Cash

Contracted commitments are summarized in Table 4.1 for the month of April. The GRP Program's funding and forecasted expenditures are further detailed in attached ***Exhibits 2, 3, and 4***.

Please note that financial reports do not include investment income.

4.0 COST REPORT AND FINANCIAL CONSIDERATIONS

4.3 INVOICES/APPLICATIONS FOR PAYMENT

The tables below represents the GRP Program Consultant Invoices and/or Construction Contractor Applications for Payment paid through the end of the report month (Item F).

Table 4.1 - GRP Program Funding and Contracted Commitments Summary			
	Previous 3/31/2015	April 2015 Activity	Year to Date (Thru 4/30/15)
A. Approved Funding	552,640,374.07	3,752.10	552,644,126.17
B. Available Funding After Costs	480,136,037.45	3,752.10	480,139,789.55
C. Approved Contracts			
Phase I	474,270,864.76	(435,766.88)	473,835,097.88
Extensions	1,069,835.00	-	1,069,835.00
D. Project Close Out			
Phase I	(1,869,902.58)	-	(1,869,902.58)
Extensions	-	-	-
E. Uncontracted Funding	6,665,240.27	439,518.98	7,104,759.25
F. Invoices Paid *			
Phase I	402,660,659.18	9,550,498.86	412,211,158.04
Extensions	295,146.61	22,991.97	318,138.58
G. Remaining Funds **	77,180,231.66	(9,569,738.73)	67,610,492.93

*Invoices Paid -Figures reflect actual funds paid out as of period end dates noted.

**Remaining Funds-Excludes net investment income



Control panel for the sludge system located in the Pretreatment Facility

4.0 COST REPORT AND FINANCIAL CONSIDERATIONS (CONTINUED)

4.4 CONTRACT AMENDMENTS AND CHANGE ORDERS

Each of the GRP Program contracts, agreements, and work orders listed in Section 3.2 were presented at the GRP Review Committee and the SJRA Board of Directors meetings in April. The following items were authorized by the SJRA Board of Directors for execution by the SJRA General Manager.

- Interlocal Agreement with The Woodlands Township for reforestation

Surface Water Transmission System project closeout engineering amendments executed in April, 2015 include:

Line Segment	Engineering Consultant	Board Approved CPS Work Order Value	CPS Work Order Value at Completion	Net Change in Work Order Value
W1B	LAN	\$145,697	\$135,697	(\$10,000)
W3A	Cobb Fendley	\$140,100	\$86,418	(\$53,682)
C1A	Dannenbaum	\$90,742	\$45,793	(\$44,949)
C1B	Dannenbaum	\$55,370	\$32,127	(\$23,243)
C3	Kimley Horn	\$89,859	\$79,917	(\$9,942)
\$141,816 Credited to SJRA				

4.5 CLAIMS

If and when claims are received, they will be addressed by the GRP Program Team. SJRA reserves the right to withhold certain claims information that is subject to ongoing investigation, pending or threatened litigation, or covered by attorney-client privilege.

4.6 CIP CASH FLOW

The GRP Program CIP cash flow through calendar year 2015 reflects known expenditures through this month as seen in Table 4.1. Estimates for future expenditures are included in Exhibit 2. All active and currently identified future GRP Program projects and initiatives are included in the cash flow. A graph of forecasted monthly expenditures from the referenced cash flow is attached as Exhibit 3.

4.7 CIP BUDGET ESTIMATES AT COMPLETION

4.7.1 GRP Program

The **total gross funds** (including capitalized interest) required to execute Phase I of the GRP Program are currently estimated at \$564,335,358.49. Additionally, all current GRP Program contracts, including their respective SJRA Board of Director's approved budgeted amounts are listed in Exhibit 6.



GRP staff attended training provided by Eaton in the Operations Building Training Center

5.0 QUALITY ASSURANCE

5.1 FINAL DESIGN

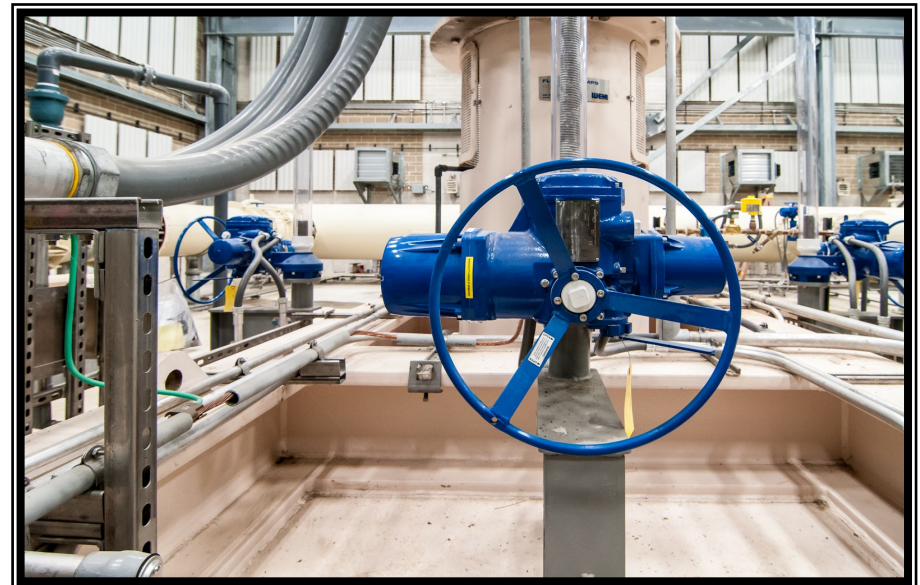
Final design is complete for Surface Water Treatment Plant, Transmission Lines, Standpipe, Fiber Optic Communications Network, and Water Receiving Facilities. Design of the permanent access road was completed.

5.2 PRE-CONSTRUCTION

There were no pre-construction meetings held this month.

5.3 CONSTRUCTION

Quality Assurance efforts by SJRA construction inspectors, as well as the CA&I consultant continued this month on the SWF project. Virtually every building on the SWF project site is progressing timely toward meeting the established SWF substantial completion date. Quality Assurance efforts include regular visits to the project site to monitor and document observed progress. Similar Quality Assurance efforts by SJRA construction inspectors and the CM&I consultant continued this month on the transmission lines.



*Above—Quality walkthrough with Contractor at the Raw Water Intake
Left—Electrician working on conduit at the Raw Water Intake
Bottom—Valve actuator for inlet gates at the Raw Water Intake*



6.0 EXHIBITS

Exhibit 1—GRP Program Schedule

Exhibit 2—GRP Program Estimate-At-Completion

Exhibit 3—GRP Program Monthly Forecasted Expenditures

Exhibit 4—GRP Program Fund Data

Exhibit 5—Monthly GRP Program Funding Report

Exhibit 6—GRP Program Current Authorizations

Exhibit 7—GRP Schedule of Revenues & Expenses—Actual & Budget

Exhibit 8—GRP Program Monthly Meeting Log

Exhibit 9—Surface Water Facilities (SWF) Construction Photos

Exhibit 10—Transmission Line System Construction Photos

Exhibit 11—Surface Water Standpipe Construction Photos

Exhibit 12—Fiber Optic Network Communication System



*Left—Belt filter press at the Solids Dewatering Building
Above—Workers pulling wire at the Sample Building*

Exhibit 1 - GRP Program Schedule

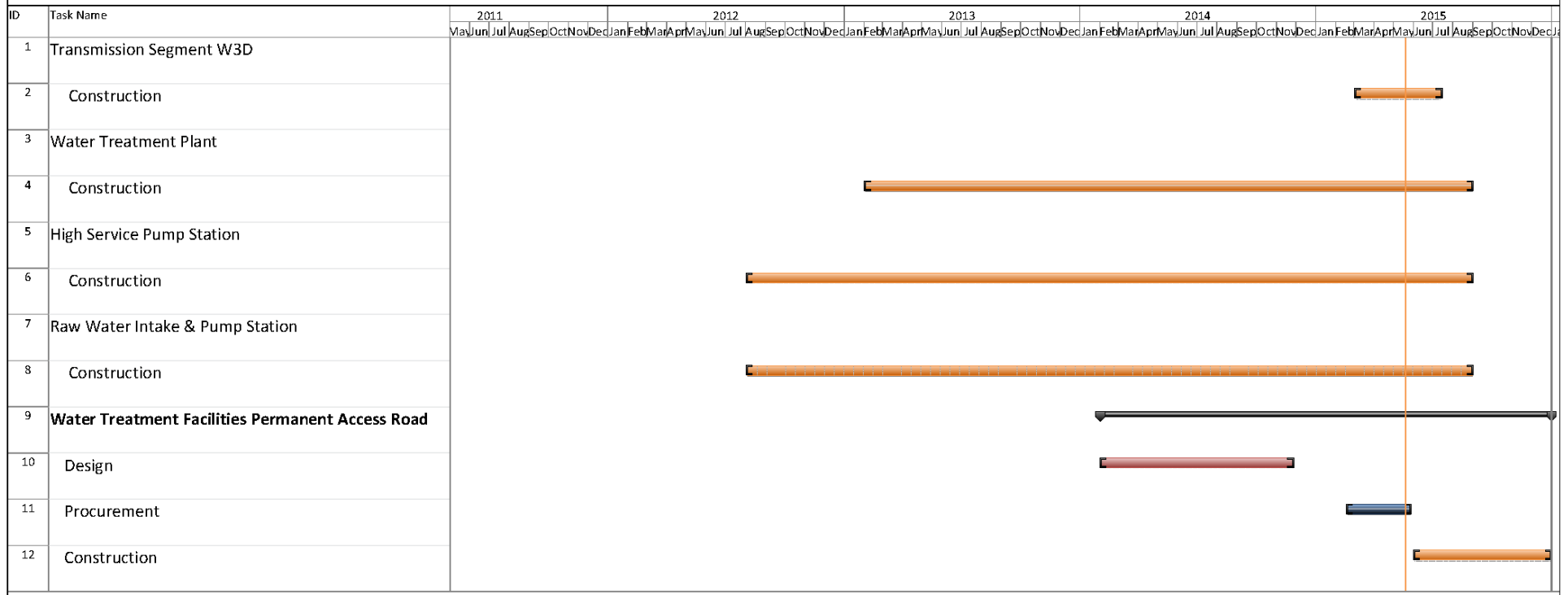


Exhibit 2

GRP Program Estimate-At-Completion as of April 30, 2015

SERVICES	ESTIMATE-AT-COMPLETION
Pre-Engineering Phase Services	\$ 4,696,451
(GRP Development, Environmental Studies, Pilot Plant, Surface Water Treatment Plant Site Survey)	
Engineering Phase Services	\$ 45,232,596
(Planning, Preliminary Engineering, Final Engineering, Geotechnical, Survey, Metes & Bounds, Subsurface Utility Investigation, Environmental)	
Construction Phase Services	\$ 29,636,704
(Engineering Services During Construction, Construction Management & Inspection [Transmission System], Construction Administration & Inspection [SWF], Material Testing)	
Construction	\$ 386,408,958
(Surface Water Transmission System, Raw Water Intake and Pump Station, Surface Water Treatment Plant, High Service Pump Station and Ground Storage Tanks, Surface Water Receiving Facilities, Infrastructure, Buildings, Roadways, Site Security, Access Roadways)	
Transmission Segment C1 - Construction	\$ 4,382,077
Transmission Segment C2 - Construction	\$ 9,015,577
Transmission Segment C3 - Construction	\$ 4,720,966
Transmission Segment C4 - Construction	\$ 4,683,615
Transmission Segment T1 - Construction	\$ 14,521,937
Transmission Segment T2 - Construction	\$ 13,475,718
Transmission Segment T3 - Construction	\$ 11,593,194
Transmission Segment W1 - Construction	\$ 15,435,545
Transmission Segment W2 - Construction	\$ 32,501,858
Transmission Segment W3 - Construction	\$ 15,994,924
Transmission Segment W4 - Construction	\$ 3,656,604
Transmission System Standpipe	\$ 2,354,175
Receiving Facilities - Construction	\$ 15,039,812
Surface Water Facilities CMAR (GMP)	\$ 190,704,740
Transmission System Fiber Optic - Construction	\$ 2,985,432
Permanent Access Roadway Construction	\$ 6,385,483
Building No. 1; Access Road; Vegetative Buffer; Construction Materials Testing; SWF Site Vegetation Management; Sanitary Sewer/Access Rd. Relocation	\$ 4,469,037
Other Offsite Construction (Transmission Line Utility Relocations, Receiving Facility Improvements)	\$ 29,832,650
Non-Project Specific Contingency	\$ 4,655,612
Program Management	\$ 10,990,772
(GRP Program Management, Survey, Geotechnical, Transient, Corrosion, Legal Consultants)	
Land Acquisition	\$ 13,539,644
(Legal, Appraisal, Title Research, Land Acquisition Consultants) ⁽¹⁾	
Total ⁽²⁾:	\$ 490,505,124

⁽¹⁾ Includes revisions to land acquisition cost estimates, land cost, and recategorizing of contingency.

⁽²⁾ Bond issuance costs are not included.



Exhibit 3

GRP Program Monthly Forecasted Expenditures as of April 30, 2015

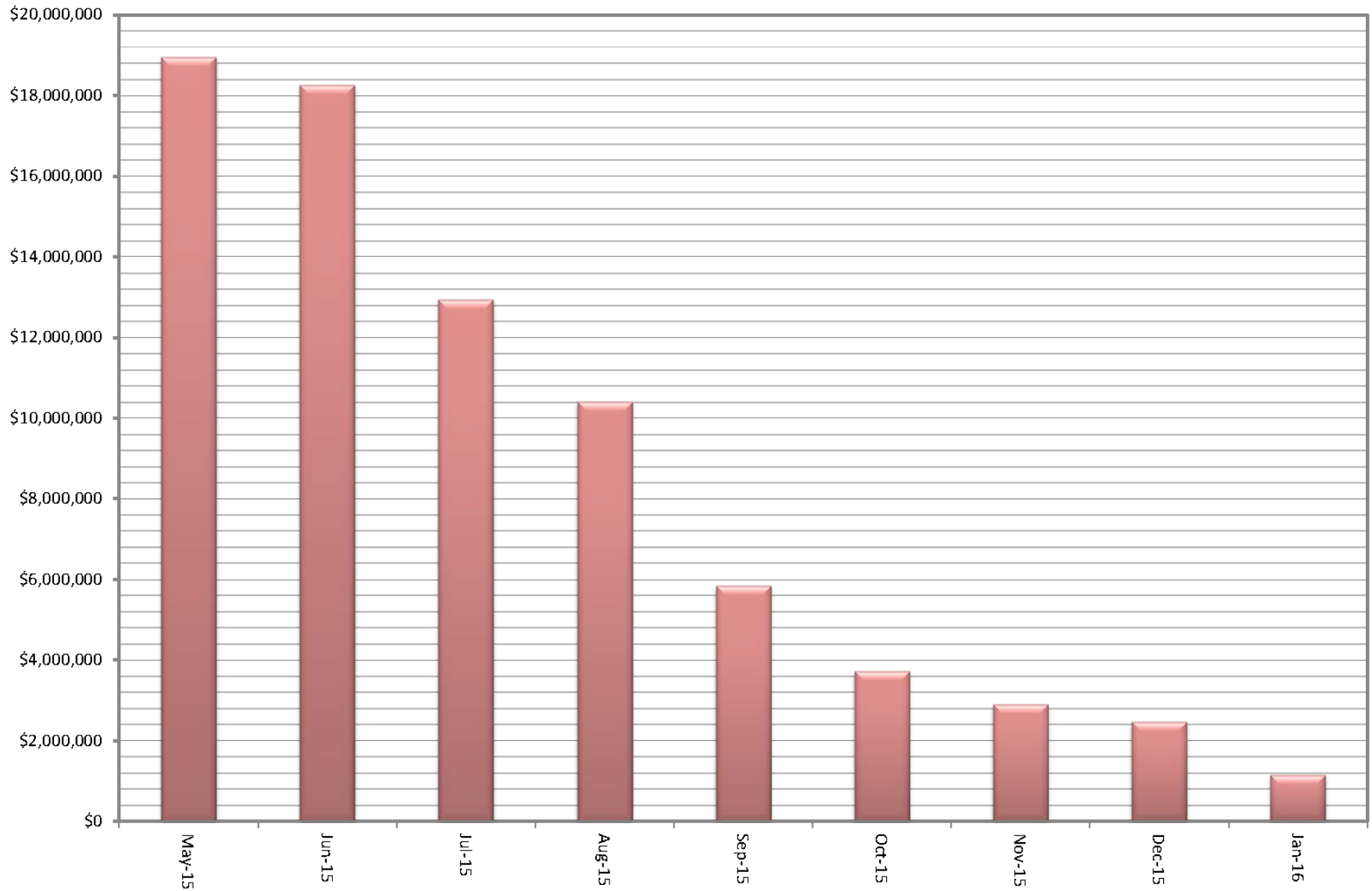


Exhibit 4

GRP Program Fund Data as of April 30, 2015

Funding Source	Amount Authorized by Board To-Date	Interest Rate	Bond Costs	Capitalized Interest	Debt Service Reserve Fund	Net Amount Currently Available	Pending Funding Source
TWDB WIF Bond Issue	\$ 21,500,000.00	.854% - 2.706%	\$ 470,337.08	\$ -	\$ -	\$ 21,029,662.92	
Open Market Bond Issue (Series 2011)	\$ 83,430,358.49	3% - 5.25%	\$ 2,049,764.39	\$ 7,858,241.52	\$ -	\$ 73,522,352.58	
TWDB DFund Series 2011A	\$ 67,470,000.00	1.22% - 4.97%	\$ 751,195.33	\$ 5,166,233.00	\$ 3,859,151.00	\$ 57,693,420.67	
TWDB DFund Series 2012	\$ 175,000,000.00	1.17% - 4.62%	\$ 971,769.13	\$ 12,869,175.00	\$ -	\$ 161,159,055.87	
TWDB DFund Series 2012A	\$ 165,000,000.00	1.26% - 4.62%	\$ 952,269.99	\$ 14,139,669.00	\$ 16,500,000.00	\$ 133,408,061.01	
TWDB Dfund Series 2013	\$ 39,850,000.00	4.50%	\$ 628,750.00	\$ 3,214,292.00	\$ 3,073,489.18	\$ 32,933,468.82	
Subtotal Approved Amounts	\$ 552,250,358.49		\$ 5,824,085.92	\$ 43,247,610.52	\$ 23,432,640.18	\$ 479,746,021.87	
Future Series 2015 (Est.)	\$ 12,085,000.00	4.54%	\$ 321,200.00	\$ 1,004,698.00	\$ -	\$ -	\$ 10,759,102.00
Subtotal Future Amounts	\$ 12,085,000.00		\$ 321,200.00	\$ 1,004,698.00	\$ -	\$ -	\$ 10,759,102.00
Totals	\$ 564,335,358.49		\$ 6,145,285.92	\$ 44,252,308.52	\$ 23,432,640.18	\$ 479,746,021.87	\$ 10,759,102.00

Notes:

1. These values do not include investment income.
2. Green items are estimates only.
3. Series 2011 bond costs include \$681,132.45 for bond insurance and \$459,709.50 for underwriter's discount.



Exhibit 5

Monthly GRP Program Funding Report

Fiscal Year 2015

Through April 30, 2015

	TWDB WIF Bond Issue	Open Market Bond Issue (Series 2011)	TWDB Dfund (Series 2011A)	TWDB Dfund (Series 2012)	TWDB Dfund (Series 2012A)	TWDB Dfund (Series 2013)	Operating (Cash)	Contributions from MUDs	Totals
A. Program Budget									
Bond Issue Amount	\$ 21,500,000.00	\$ 83,430,358.49	\$ 67,470,000.00	\$ 175,000,000.00	\$ 165,000,000.00	\$ 39,850,000.00			\$ 552,250,358.49
Operating Funds Commitment							\$ 99,767.68		\$ 99,767.68
Contributions from MUDs								\$ 294,000.00	\$ 294,000.00
Total Investment	\$ 21,500,000.00	\$ 83,430,358.49	\$ 67,470,000.00	\$ 175,000,000.00	\$ 165,000,000.00	\$ 39,850,000.00	\$ 99,767.68	\$ 294,000.00	\$ 552,644,126.17
B. Contracted Costs									
Phase I									
Contracts Completed	\$ 20,355,197.84	\$ 27,280,382.21	\$ 13,983,598.20	\$ -	\$ 7,661,089.10	\$ 3,721,564.70	\$ 14,407.80	\$ -	\$ 73,016,239.85
Current Contract Values	\$ 655,944.00	\$ 33,365,123.50	\$ 42,624,257.46	\$ 161,159,055.87	\$ 123,237,657.71	\$ 28,763,182.48	\$ 85,359.88	\$ -	\$ 389,890,580.90
Change Orders	\$ -	\$ 8,390,080.12	\$ 1,010,780.46	\$ -	\$ 1,968,967.12	\$ (441,550.57)	\$ -	\$ -	\$ 10,928,277.13
Project Close Out	\$ (354,198.43)	\$ (986,180.24)	\$ (213,523.38)	\$ -	\$ (315,975.38)	\$ (25.15)	\$ -	\$ -	\$ (1,869,902.58)
Phase I Total:	\$ 20,656,943.41	\$ 68,049,405.59	\$ 57,405,112.74	\$ 161,159,055.87	\$ 132,551,738.55	\$ 32,043,171.46	\$ 99,767.68	\$ -	\$ 471,965,195.30
Extensions									
Contracts Completed	\$ -	\$ 10,175.00	\$ -	\$ -	\$ -	\$ -	\$ -	\$ -	\$ 10,175.00
Current Contract Values	\$ -	\$ 1,059,660.00	\$ -	\$ -	\$ -	\$ -	\$ -	\$ -	\$ 1,059,660.00
Change Orders	\$ -	\$ -	\$ -	\$ -	\$ -	\$ -	\$ -	\$ -	\$ -
Project Close Out	\$ -	\$ -	\$ -	\$ -	\$ -	\$ -	\$ -	\$ -	\$ -
Extensions Total:	\$ -	\$ 1,069,835.00	\$ -	\$ -	\$ -	\$ -	\$ -	\$ -	\$ 1,069,835.00
C. Expenditures									
Phase I									
Paid Previous Fiscal Years	\$ 20,599,416.62	\$ 49,618,248.03	\$ 40,595,829.88	\$ 109,374,040.69	\$ 91,422,085.04	\$ 12,922,461.97	\$ 84,942.42	\$ -	\$ 324,617,024.65
Paid Current Fiscal Year	\$ 3,577.50	\$ 6,086,665.74	\$ 10,817,845.39	\$ 32,590,668.94	\$ 23,945,089.37	\$ 14,141,062.62	\$ 9,223.83	\$ -	\$ 87,594,133.39
Phase I Total:	\$ 20,602,994.12	\$ 55,704,913.77	\$ 51,413,675.27	\$ 141,964,709.63	\$ 115,367,174.41	\$ 27,063,524.59	\$ 94,166.25	\$ -	\$ 412,211,158.04
Extensions									
Paid Previous Fiscal Years	\$ -	\$ 172,033.34	\$ -	\$ -	\$ -	\$ -	\$ -	\$ -	\$ 172,033.34
Paid Current Fiscal Year	\$ -	\$ 146,105.24	\$ -	\$ -	\$ -	\$ -	\$ -	\$ -	\$ 146,105.24
Extensions Total:	\$ -	\$ 318,138.58	\$ -	\$ -	\$ -	\$ -	\$ -	\$ -	\$ 318,138.58
Issuance Costs	\$ 470,337.08	\$ 2,049,764.39	\$ 751,195.33	\$ 971,769.13	\$ 952,269.99	\$ 628,750.00	\$ -	\$ -	\$ 5,824,085.92
Debt Service Reserve Fund	\$ -	\$ -	\$ 3,859,151.00	\$ -	\$ 16,500,000.00	\$ 3,073,489.18	\$ -	\$ -	\$ 23,432,640.18
Capitalized Interest	\$ -	\$ 7,858,241.52	\$ 5,166,233.00	\$ 12,869,175.00	\$ 14,139,669.00	\$ 3,214,292.00	\$ -	\$ -	\$ 43,247,610.52
D. Remaining									
Uncontracted Funds	\$ 372,719.51	\$ 4,403,111.99	\$ 288,307.93	\$ (0.00)	\$ 856,322.46	\$ 890,297.36	\$ (0.00)	\$ 294,000.00	\$ 7,104,759.25
Funding Balance *	\$ 426,668.80	\$ 17,499,300.23	\$ 6,279,745.40	\$ 19,194,346.24	\$ 18,040,886.60	\$ 5,869,944.23	\$ 5,601.43	\$ 294,000.00	\$ 67,610,492.93

*Excluding net investment income



Exhibit 6

GRP Program Current Authorizations as of April 30, 2015

Surface Water Transmission System - Consultant Services

Project	Firm	Amount Authorized by Board
T1	Jones & Carter	\$ 2,166,221.02
T2	Klotz Associates	\$ 1,822,718.66
T3	Espey	\$ 1,892,282.82
W1	LAN	\$ 2,469,560.65
W2	Binkley & Barfield	\$ 3,311,241.40
W3	Cobb Fendley	\$ 3,938,336.96
W4	LJA	\$ 1,009,006.98
C1	Dannenbaum	\$ 891,000.68
C2	Schaumburg & Polk	\$ 2,211,922.28
C3	Kimley Horn	\$ 1,238,749.53
C4	RG Miller	\$ 597,788.37
Fiber Optic	EMA	\$ 1,062,569.67
WRFs	Malcom Pirnie/Arcadis	\$ 2,680,366.57
CM&I	Kellog Brown & Root	\$ 8,657,135.48
Subtotal - Surface Water Transmission System		\$ 33,948,901.07

Surface Water Facilities - Consultant Services

Project	Firm	Amount Authorized by Board
WTP	HDR Engineering	\$ 19,382,334.64
HSPS	AECOM	\$ 5,455,218.39
StandPipe	AECOM	\$ 192,235.38
RWI&PS	Freese & Nichols	\$ 3,929,369.64
CA&I	CDMSmith	\$ 5,348,633.00
Subtotal - Surface Water Facilities		\$ 34,307,791.05

Program Consultant Services & Other Projects

Project	Firm	Amount Authorized by Board
Program Management	Brown & Gay	\$ 10,695,226.55
Program Survey	Landtech	\$ 553,621.50
Program Geotechnical	Raba Kistner	\$ 145,260.00
Prog Transient Analyses	AECOM	\$ 5,647,453.77
Access Rd/Misc Service	ACES	\$ 857,366.25
SWF Surveying	S&V Surveying	\$ 66,875.00
Land Acq	KDM	\$ 431,592.70
Land Acq	PAS	\$ 1,413,334.88
Program Environmental	Halff Associates	\$ 1,063,698.87
Program Fiber Optics	EMA	\$ 1,062,569.67
Program Corrosion	V&A Consulting Engineers	\$ 866,676.00
Program Legal Services & Projects	Multiple	\$ 5,700,577.48
Subtotal - Program Consultant Services & Other Projects		\$ 28,504,252.67



Exhibit 6 (con't)

GRP Program Current Authorizations as of April 30, 2015

Surface Water Transmission System Extensions - Consultant Services

Project	Firm	Amount Authorized by Board
MUD99/115	IDS Engineering Group - x	\$ 470,720.00
MUD99/115	Andrews & Kurth - x	\$ 100,000.00
MUD99/115	PAS - x	\$ 200,000.00
MUD99/115	Arcadis - x	\$ 36,843.00
MUD99/115	V&A Consulting Engineers - x	\$ 41,256.00
MUD99/115	Brown & Gay - x	\$ 121,216.00
Subtotal - Surface Water Transmission System Extensions		\$ 970,035.00

Active or Completed Construction Contracts Managed by GRP

Project	Firm	Amount Authorized by Board
GRP Bldg No. 1	Brookstone	\$ 2,008,673.00
Bldg No. 1/Aqua Tx CMT	Aviles Engineering	\$ 64,343.15
Landscape Buffer	Key-Scape Landscape	\$ 53,090.00
Temp Access Road	Lindsey Construction	\$ 977,583.60
Access Road CMT	Terracon Consultants	\$ 10,359.70
Access Road Overlay and Detention	AAA Asphalt	\$ 412,284.59
Access Road Landscape	TreeScapes	\$ 34,165.00
Aqua Texas Sewer	Randy Roan Construction	\$ 547,341.17
Bldg No. 1 Fiber Line	Preferred Technologies	\$ 231,157.56
Surface Water Plant (CMAR)	McCarthy	\$ 190,704,740.00
SWF CMT	Geotest	\$ 2,011,748.65
Transmission Sytem Utility Relocations	Various	\$ 2,062,614.14
Transmission System CMT (T3, W1, W2, W3, W4)	Aviles	\$ 1,851,330.00
Transmission System CMT (T1, T2, C1, C2, C3, C4)	Terracon	\$ 756,711.25
Transmission Segment T1	S.J. Louis Construction of Texas Ltd	\$ 14,521,937.14
Transmission Segment T2	Texas Sterling Construction Company	\$ 13,475,718.33
Transmission Segment T3	S.J. Louis Construction of Texas Ltd	\$ 11,393,193.97
Transmission Segment C1A	Garney Companies, Inc.	\$ 3,837,683.40
Transmission Segment C1B	E.P. Brady, LTD.	\$ 544,393.60
Transmission Segment C2	Garney Companies, Inc.	\$ 9,014,837.00
Transmission Segment C3	E.P. Brady, LTD.	\$ 4,972,314.80
Transmission Segment C4	BRH-Garver Construction, L.P.	\$ 5,115,396.90
Transmission Segment W1A	Huff & Mitchell, Inc.	\$ 8,222,000.50
Transmission Segment W1B	Texas Sterling Construction Company	\$ 7,213,544.50
Transmission Segment W2A	Texas Sterling Construction Company	\$ 16,340,258.02
Transmission Segment W2B	Texas Sterling Construction Company	\$ 16,161,600.00
Transmission Segment W3A	Huff & Mitchell, Inc.	\$ 7,880,207.50

Exhibit 6 (con't)

GRP Program Current Authorizations as of April 30, 2015

Project	Firm	Amount Authorized by Board
Transmission Segment W3D	Alcott, Inc. (TCH)	\$ 1,840,986.00
Transmission Segment W4	Huff & Mitchell, Inc.	\$ 3,656,604.23
Receiving Facilities South	CSA	\$ 7,127,383.00
Receiving Facilities North	Archer Western	\$ 6,160,184.55
Transmission SCADA - Fiber Optic Construction	Fisk Electric Company	\$ 2,885,432.35
Standpipe	CSA	\$ 2,354,175.00
Miscellaneous	Other Construction Contracts, Permits, Fees, etc.	\$ 233,666.23
Subtotal - Construction Contracts		\$ 344,677,658.83

Active or Completed Engineering/Construction Contracts Managed by Participants

Project	Participant	Amount Authorized by Board
Distribution and Well Collection Lines	Woodlands Water	\$ 4,858,854.31
Distribution and Water Plants Improvements	City of Conroe Water	\$ 12,952,247.00
Receiving Facilities	Rayford Road MUD Water	\$ 1,752,244.00
Receiving Facilities	City of Oak Ridge North Water	\$ 506,844.00
MSEC Receiving Facility and Distr. System Imp.	MSEC	\$ 1,344,828.98
Wastewater Alkalinity Improvements	Southern Montgomery County MUD Wastewater	\$ 455,975.00
Wastewater Alkalinity Improvements	Woodlands Wastewater	\$ 219,022.00
Subtotal -Engineering/Construction Managed by Participants		\$ 22,090,015.29

Totals

	Amount Authorized by Board
Surface Water Transmission System - Consultant Services	\$ 33,948,901.07
Surface Water Facilities - Consultant Services	\$ 34,307,791.05
Program Consultant Services & Other Projects	\$ 28,504,252.67
Surface Water Transmission System Extensions - Consultant Services	\$ 970,035.00
Active or Completed Construction Contracts	\$ 344,677,658.83
Engineering/Construction Managed by Participants	\$ 22,090,015.29
Total	\$ 464,498,653.91



Exhibit 7

San Jacinto River Authority Groundwater Reduction Plan

Schedule of Revenues & Expenses—Actual and Budget

For Eight Months Ending April 30, 2015

	Apr	Fiscal Year To Date				Fiscal Budget	
	Actual	Actual	Budget	Variance	% Variance	Total Year Budget	Actual YTD % of Total Year Budget
OPERATING REVENUES							
GRP pumping fees	\$ 2,678,509	\$ 22,030,623	\$ 26,579,604	\$ (4,548,981)	(17%)	\$ 41,992,101	52%
GRP Surface Water Sales	-	-	-	-	0%	4,942,463	0%
TOTAL OPERATING REVENUES	\$ 2,678,509	\$ 22,030,623	\$ 26,579,604	\$ (4,548,981)	(17%)	\$ 46,934,564	47%
OPERATING EXPENSES							
Payroll & employee benefit expenses	\$ 386,051	\$ 2,884,847	\$ 3,353,896	\$ 469,049	14%	\$ 5,108,247	56%
Professional fees	22,276	151,675	371,200	219,525	59%	556,800	27%
Purchased & contracted services	15,806	112,032	205,155	93,123	45%	307,732	36%
Supplies, materials & utilities	104,102	1,582,027	4,835,137	3,253,110	67%	6,815,340	23%
Maintenance repairs, parts & rentals	855	6,289	52,667	46,378	88%	105,750	6%
General & administration	70,129	403,480	630,886	227,406	36%	946,329	43%
TOTAL OPERATING EXPENSES	\$ 599,219	\$ 5,140,350	\$ 9,448,940	\$ 4,308,590	46%	\$ 13,840,198	37%
NON-OPERATING REVENUES & EXPENSES							
Interest on investments	\$ 24,224	\$ 274,849	\$ 133,120	\$ 141,729	106%	\$ 199,680	138%
Other revenues	-	1,950	-	1,950	100%	-	0%
Interest expense	(1,769,346)	(14,172,924)	(14,172,926)	2	(0%)	(21,360,309)	66%
TOTAL NON-OPERATING (EXCLUDING ITEMS NOT BUDGETED)	\$ (1,745,123)	\$ (13,896,125)	\$ (14,039,806)	\$ 143,681	(1%)	\$ (21,160,629)	66%
NET INCOME (LOSS) (EXCLUDING ITEMS NOT BUDGETED)	\$ 334,167	\$ 2,994,148	\$ 3,090,858	\$ (96,710)	(3%)	\$ 11,933,737	25%
NON-OPERATING REVENUES & EXPENSES (NOT BUDGETED)							
Depreciation	\$ (26,723)	\$ (208,684)	\$ -	\$ (208,684)	100%	\$ -	0%
Amortized debt issuance expense	363	2,902	-	2,902	100%	-	0%
TOTAL NON-OPERATING (NOT BUDGETED)	\$ (26,360)	\$ (205,782)	\$ -	\$ (205,782)	100%	\$ -	0%
NET INCOME (LOSS) (BUDGETED AND NOT BUDGETED)	\$ 307,807	\$ 2,788,366	\$ 3,090,858	\$ (302,492)	(10%)	\$ 11,933,737	23%



Exhibit 7 (con't)

GRP Division

Clarification of Actual & Budget Variances

For Eight Months Ending April 30, 2015

Category	YTD - Driver	April 2015	FYTD 2015
GRP Pumping Fees	Usage variance due to abnormally wet weather conditions and change in consumer behavior. This trend began in FY2014 and has continued if not intensified, into FY2015. If the trend persists, pumpage and surface water rates may be impacted in future fiscal years.	(931)	(4,549)
Payroll and related expenses	Budgeted positions not filled as scheduled.	14	469
Professional Fees	Professional fees less than budgeted.	25	220
Purchased & Contracted Services	Purchased and contracted services less than budgeted.	10	93
Supplies, Materials, Utilities, Maintenance, Repairs, Parts & Rentals	Fuel, office supplies, phones, recruiting and misc. expenses less than budgeted.	9	181
	Chemicals-no usage this month	188	1,504
	Utilities-less than budgeted	67	543
	TRA Reservation Fee less than budgeted	-	62
	COH Reservation Fee less than budgeted	-	908
	SJRA Reservation Fee less than budgeted	(61)	55
	Maintenance repairs, parts & rentals expense less than budgeted.	5	46
General & Administration	Allocated labor and related expenses less than budgeted, anticipated a quicker rate of growth than has been actualized.	8	227
Non-Operating	Interest/Investment Income	8	142
	Other Revenues	-	2
	Bond interest expense	-	1
	Capital Contributions	-	-
	Depreciation expense	(27)	(209)
	Bond Issuance Cost Amort expense	1	3
		(684)	(302)



Exhibit 8

GRP Program Monthly Meeting Log for April, 2015

Meeting	Subject of Meeting	Location	Date	Participants
SWF Partnering Session	Construction	GRP Building	4/7/2015	GRP Staff, Engineers, Contractors, and Consultant Team
Electricity Contract Meeting	Electricity Transfer	GRP Building	4/10/2015	GRP Staff, Engineers, Contractors, and Consultant Team
GRP Review Committee Meeting	Board Agenda Items	G&A Building	4/20/2015	GRP Review Committee, SJRA Staff, and General Public
Access Road Meeting	Access Road	GRP Building	4/21/2015	GRP Staff, Engineers, Contractors, and Consultant Team
SJRA Board of Directors Meeting	Board Agenda Items	G&A Building	4/23/2015	SJRA Board of Directors, SJRA Staff, and General Public
Start-up Planning Meeting	Surface Water Facilities	McCarthy Trailer	Daily (Tues.-Fri.)	GRP Staff, Engineers, Contractors, and Consultant Team
CMAR Coordination Meeting	CMAR	GRP Building	Weekly	SJRA Staff, GRP Program Team, and Consultant Team
Construction Administration and Inspection Meetings	Construction	GRP Building	Weekly	SJRA Staff, GRP Program Team, and CA&I Team
Transmission System Coordination Meeting	Transmission System	GRP Building	Weekly	Contractor, SJRA Staff, GRP Program Team, and Consultant Team
Water Receiving Facilities-South Progress Meeting	WRF-S	GRP Building	Monthly	Contractor, SJRA Staff, GRP Program Team, and Consultant Team
Water Receiving Facilities-North Progress Meeting	WRF-N	GRP Building	Monthly	Contractor, SJRA Staff, GRP Program Team, and Consultant Team
Segments W1B, W2A, W2B and W3D Progress Meetings	Segments W2B and W3A	GRP Building	Monthly	Contractor, SJRA Staff, GRP Program Team, and Consultant Team
Segments C1, C2 & C4 Progress Meeting	Segments T1	GRP Building	Monthly	Contractor, SJRA Staff, GRP Program Team, and Consultant Team
Segment T3 Bi-Weekly Progress Meeting	Segment T3	GRP Building	Bi-Weekly	Contractor, SJRA Staff, GRP Program Team, and Consultant Team
Standpipe Progress Meeting	Standpipe	GRP Building	Monthly	Contractor, SJRA Staff, GRP Program Team, and Consultant
FONCS Monthly Progress Meetings	FONCS	GRP Building	Monthly	Contractor, SJRA Staff, GRP Program Team, and Consultant
W3C Land Acquisition Meeting	Land Acquisition	GRP Operations Building	Monthly	SJRA Staff, GRP Program Team, Attorneys, and Consultant
Surface Water Facility Progress Meeting	Surface Water Facilities	GRP Building	Bi-Monthly	SJRA Staff, CMAR, CA&I, and Consultant Team



Surface Water Facilities Construction Photos



EXHIBIT 9 SWF Construction Photos



EXHIBIT 9 (con't) SWF Construction Photos



❶ Granulated Activated Carbon Building—Eductor system installation of GAC media

EXHIBIT 9 (con't) SWF Construction Photos



① *Granulated Activated Carbon (GAC) Building—Installation of GAC material into contactor basin*

EXHIBIT 9 (con't) SWF Construction Photos



② *Dewatering Building—Operations and maintenance staff training on the Belt Filter Press*

EXHIBIT 9 (con't) SWF Construction Photos



② *Dewatering Building—Operations and maintenance staff installing belts during training*

EXHIBIT 9 (con't) SWF Construction Photos



② *Dewatering Building—Operations and maintenance staff installing belts during training*

EXHIBIT 9 (con't) SWF Construction Photos



③ *Maintenance Building—Erection of structural steel framing system*

EXHIBIT 9 (con't) SWF Construction Photos



General Site—Form work, reinforcing steel, and concrete placement

Transmission Line System Construction Photos



EXHIBIT 10 (con't) Transmission Line System Construction Photos

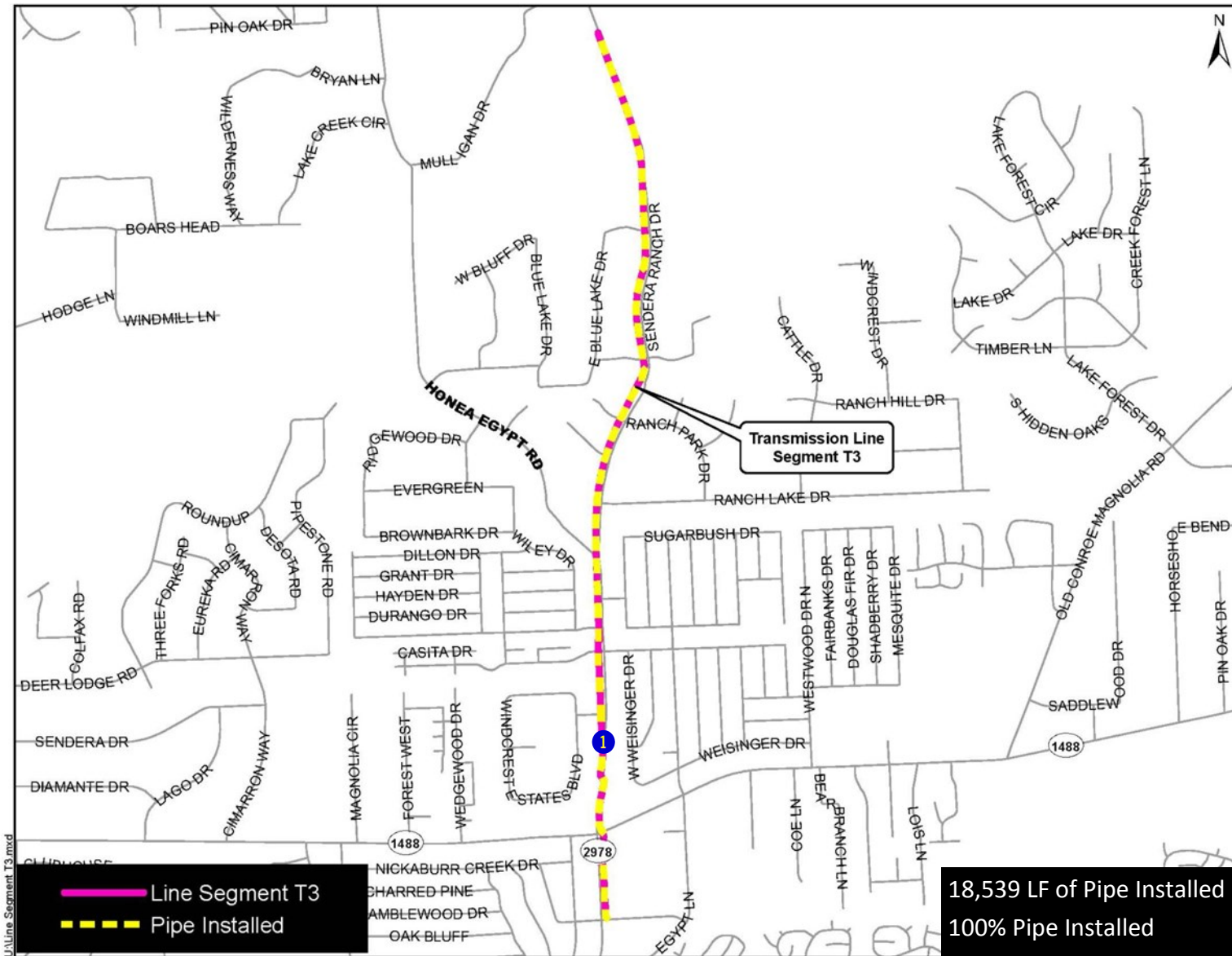


EXHIBIT 10 (con't) Transmission Line System Construction Photos



① *Site restoration along Sendera Ranch Road north of FM 1488*



EXHIBIT 10 (con't) Transmission Line System Construction Photos

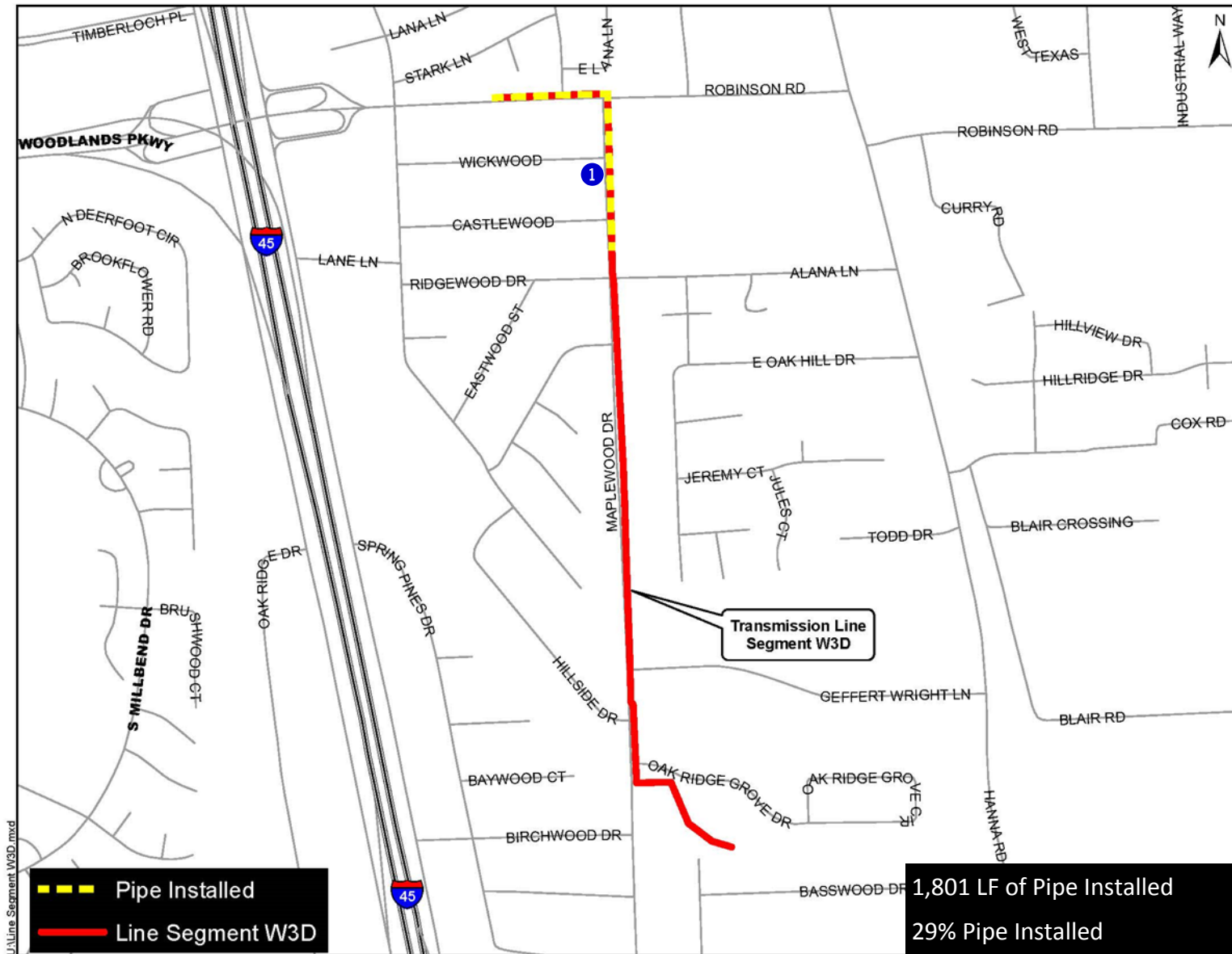
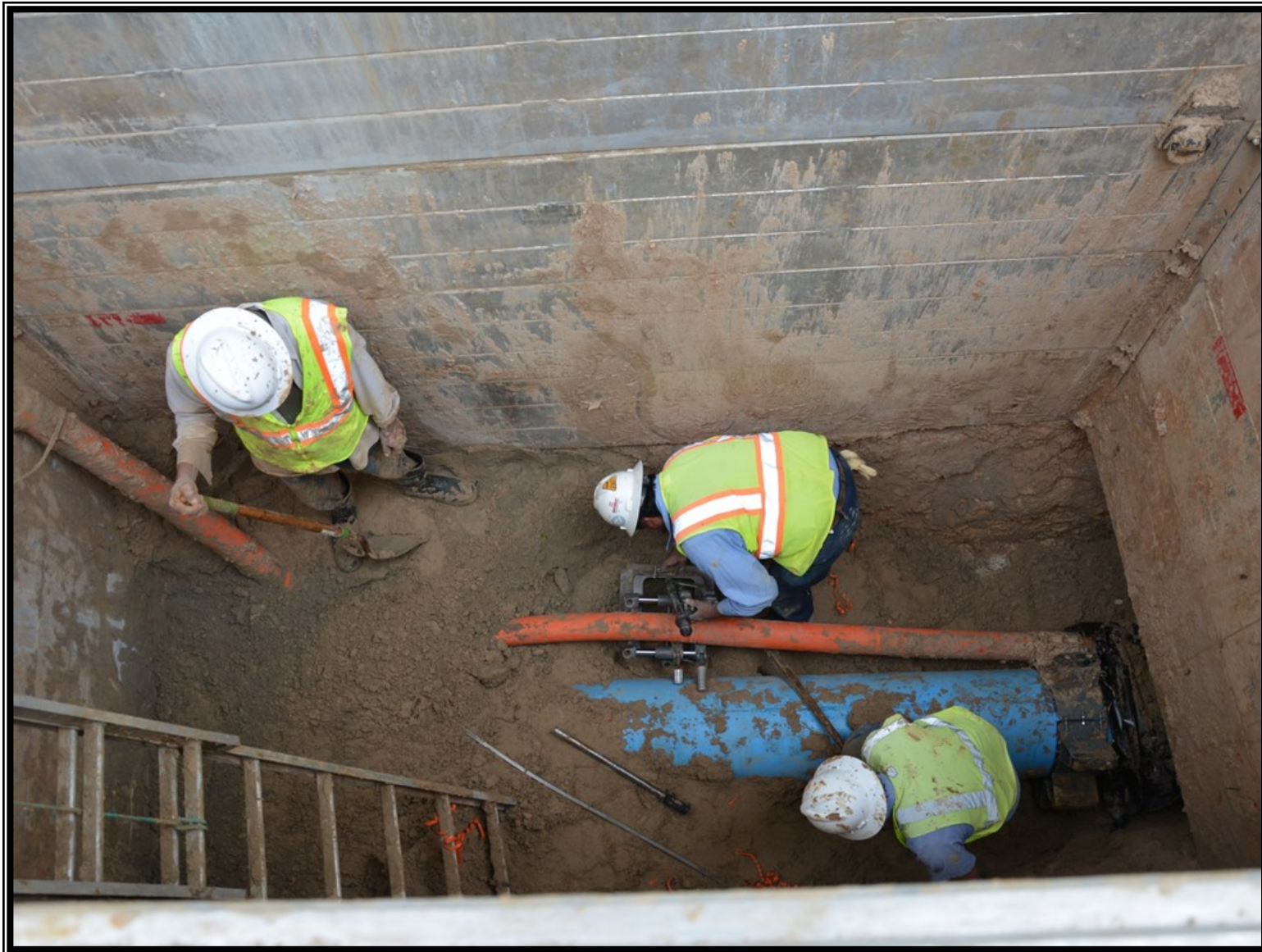


EXHIBIT 10 (con't) Transmission Line System Construction Photos



① Fusion of fiber conduit adjacent to waterline along Maplewood Drive

EXHIBIT 11 Surface Water Standpipe Construction Photos

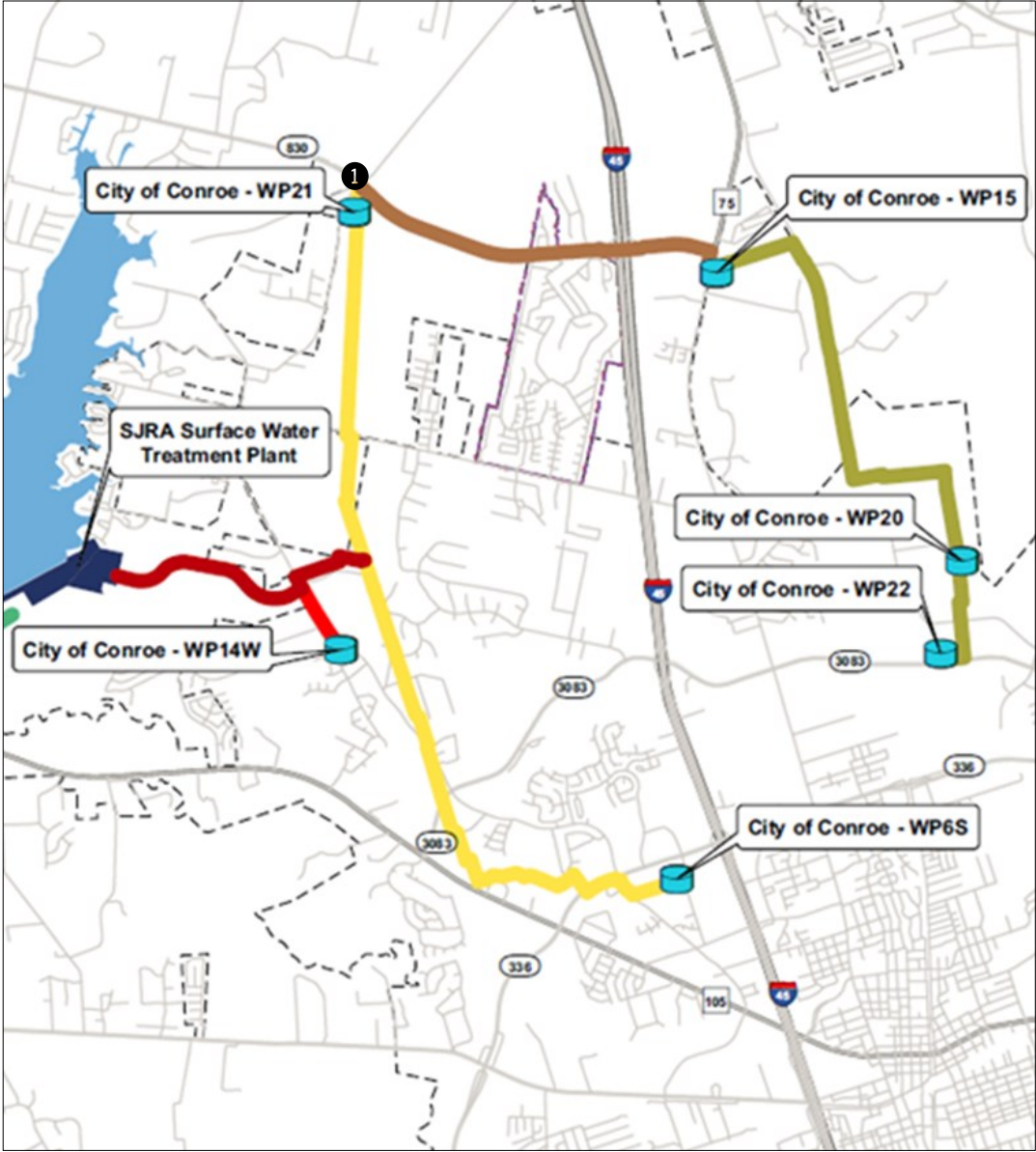


EXHIBIT 11 (con't) Surface Water Standpipe Construction Photos



① *Exterior cleaning of the Standpipe*

Fiber Optic Network Communication System Photos



EXHIBIT 12 (con't) Fiber Optic Network Communication System Photos



Night time installation of fiber optic cable along Research Forest Drive

7.0 GRP PROGRAM EXTENSIONS

7.1 ENGINEERING

Design efforts are underway for the GRP Program Extension projects. Below is a summary of the extension projects through the month of April.

Transmission Segment W3C—Segment W3C includes approximately 6,900 linear feet of 12-inch pipe to be constructed east of and connecting to Segment W3B along the Kinder Morgan (Tennessee Gas) pipeline corridor east of I-45, to northward along Aldine Westfield Road to the Montgomery County MUD 99 Water Plant No. 1. The 90% design drawings, specifications and metes and bounds efforts have been submitted and are under review.

MUD 99 Receiving Facilities—The 100% design drawings and specifications were initiated in December and are currently in process. At this time, these documents are planned to be combined with the Segment W3C transmission contract documents for a single contract.

