

SJRA GRP
Surface Water Facilities
Construction Projects

November 2012

Surface Water Facilities

- Cost = \$42,874,840.00 (thru EWP2)
- Change Orders = \$0.00
- Total = \$42,874,840.00
- Total Estimated Cost To Date: \$190,078,395.00
- Total Project Budget: \$191,000,000.00
- Scheduled Completion Date: June 1, 2015

Drilling Rig

Dredging Crane

Hoisting Crane



10.15.2012

**Steel Casing being set in-place
at Bent 2 of the Bridge
Foundation**

10.15.2012



**Steel casing being
driven to the
proper depth**



10.19.2012

10.22.2012

Drilling of 1st
Shaft - Bent 2



Rebar installation
at first shaft –
Bent 2

10.23.2012



**Concrete
Placement for
Drilled Shaft –
Bent 2**



10.31.2012

2012

Concrete
Placement for
Drilled Shaft –
Bent 2



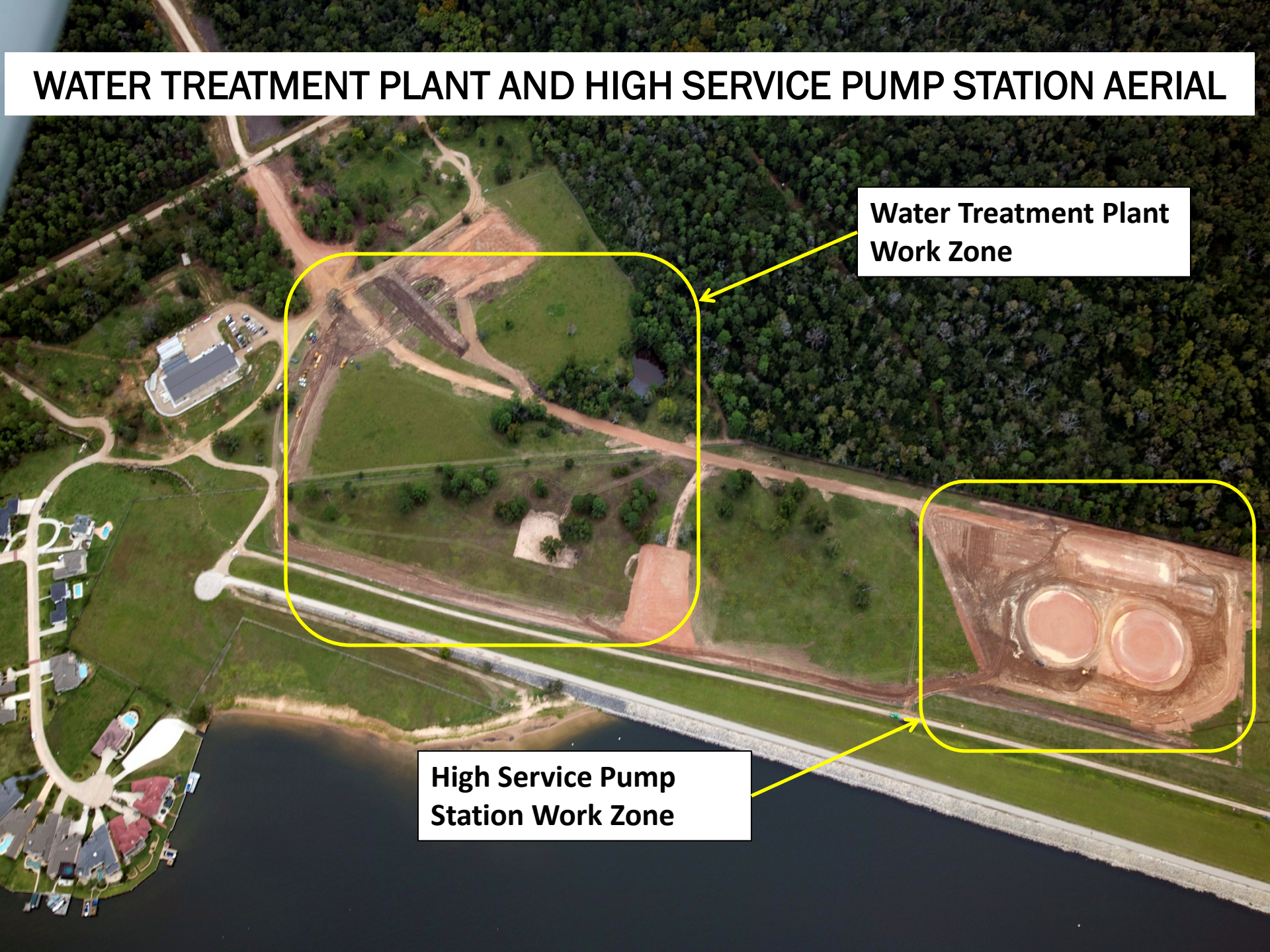
Aerial Photos

Flyover October 22, 2012

WATER TREATMENT PLANT AND HIGH SERVICE PUMP STATION AERIAL

**Water Treatment Plant
Work Zone**

**High Service Pump
Station Work Zone**



RAW WATER INTAKE – BRIDGE CONNECTION TO THE DAM

Drilling Rig

Hoisting Crane

Dredging Crane

