

# GRP PROGRAM CONSTRUCTION PROGRESS



**GRP Review  
Committee  
Meeting  
January 20, 2015**



**SJRA Board  
of Directors  
Meeting  
January 22, 2015**

# SURFACE WATER FACILITY CONSTRUCTION ADMINISTRATION

## Project Data Thru 12/31/2014

Contracted Amount:	\$190,704,740.00
Change Orders:	\$ 0.00
Estimate to Complete:	\$190,704,740.00
Amount Invoiced:	\$156,050,576.00
Percent Complete:	81.8%
Completion Date:	June 2015

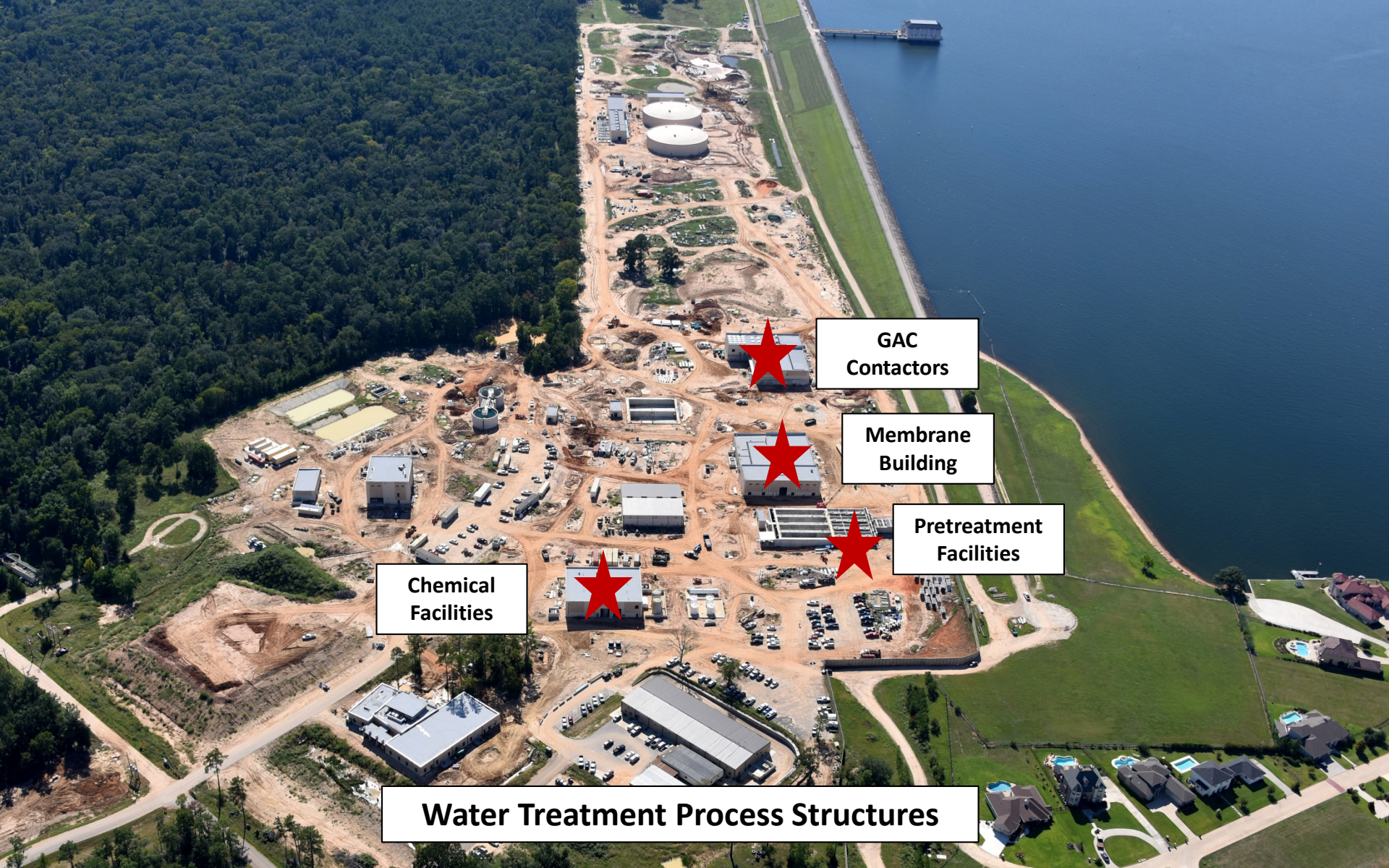


**Raw Water Intake  
and Pump Station**





Raw Water Intake – Electrical equipment installation



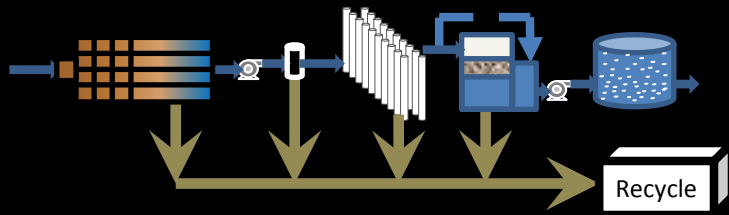
**GAC  
Contactors**

**Membrane  
Building**

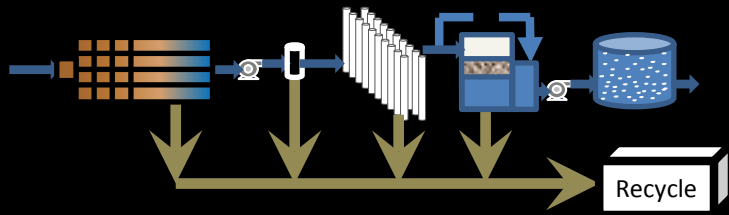
**Pretreatment  
Facilities**

**Chemical  
Facilities**

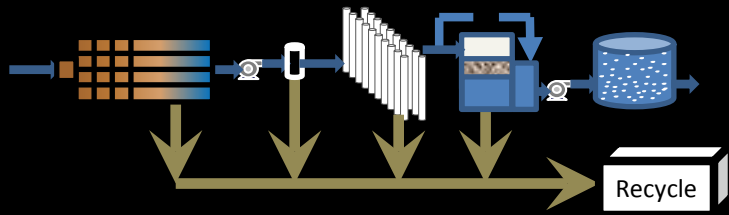
**Water Treatment Process Structures**



Pretreatment – Installation of basin covers

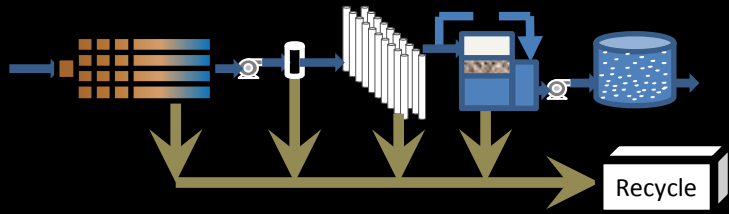


Membrane Building – Chemical storage and pumping systems

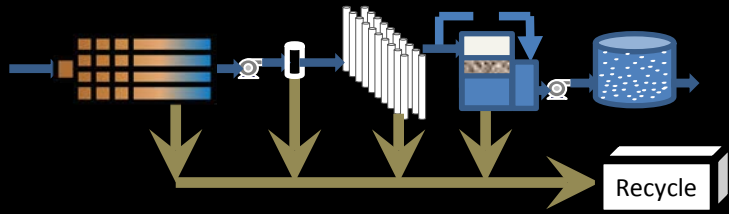


Membrane Building – Electrical equipment installation





Chemical Building – Electrical conduit installation



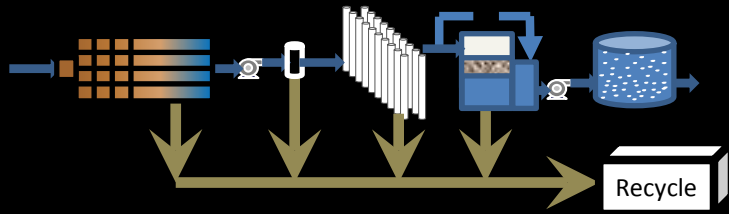
Granulated Activated Carbon Building – GAC trough and underdrain installation

**High Service Pump Station,  
GST's, and Blower Building**

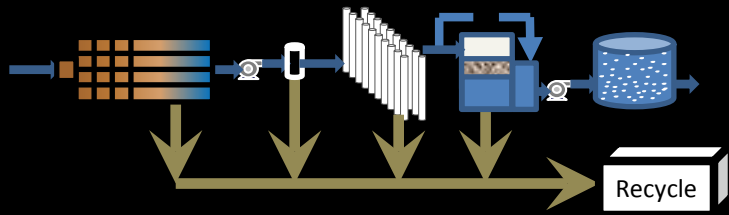


**Finished Water Process Structures**

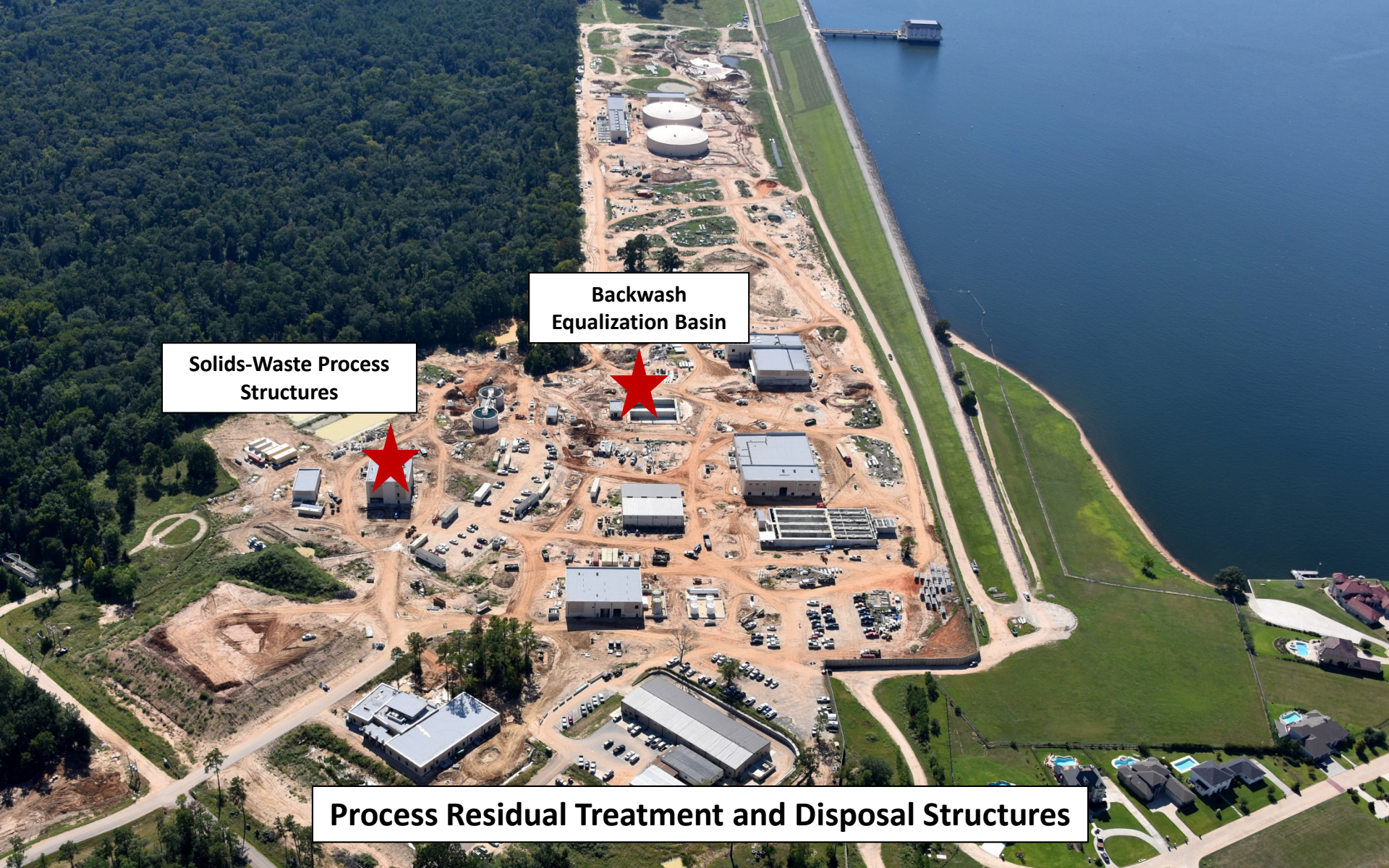




High Service Pump Station – Pump room overview



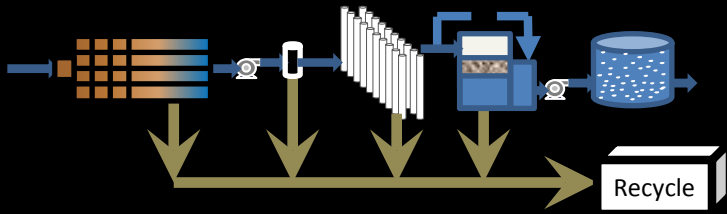
Blower Building – Installation of turbo blowers



**Solids-Waste Process Structures**

**Backwash Equalization Basin**

**Process Residual Treatment and Disposal Structures**



Dewatering Building – Belt filter press and walkway



**Electrical  
Facilities**

**Operations  
Building**

**Operational Structures**





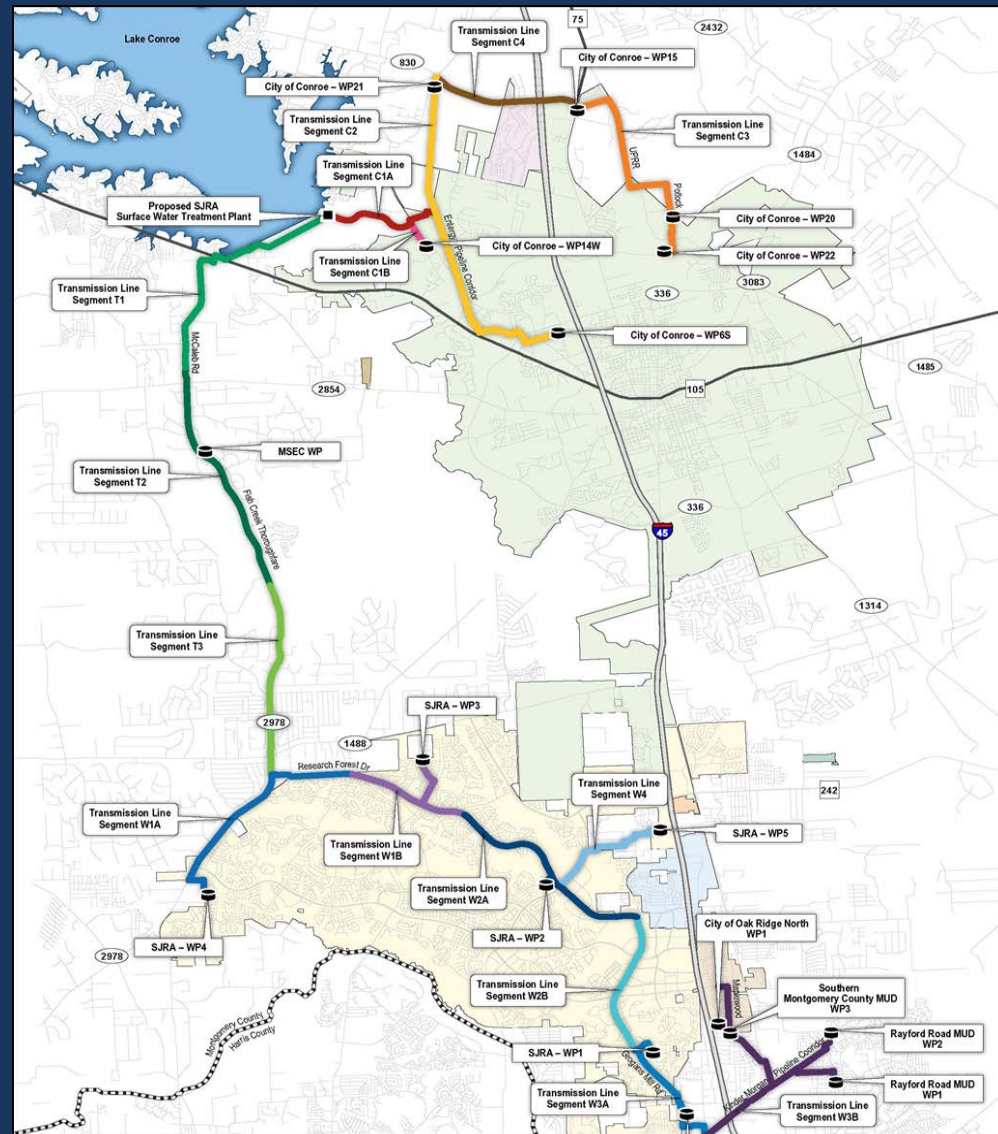
Operations Building – Interior finishes

# SURFACE WATER FACILITY CONSTRUCTION PROGRESS

## Questions?



# SURFACE WATER TRANSMISSION SYSTEM CONSTRUCTION PROGRESS



# TRANSMISSION LINE SYSTEM CONSTRUCTION ADMINISTRATION

## Project Data Thru 12/31/2014

Original Contract Amount: \$ 146,610,000.60

Change Orders: \$ 2,391,349.69

Total Contract Amount: \$ 149,001,350.29

Amount Invoiced: \$133,164,445.77

Percent Complete: 89%

Estimated Completion Date: May 2015



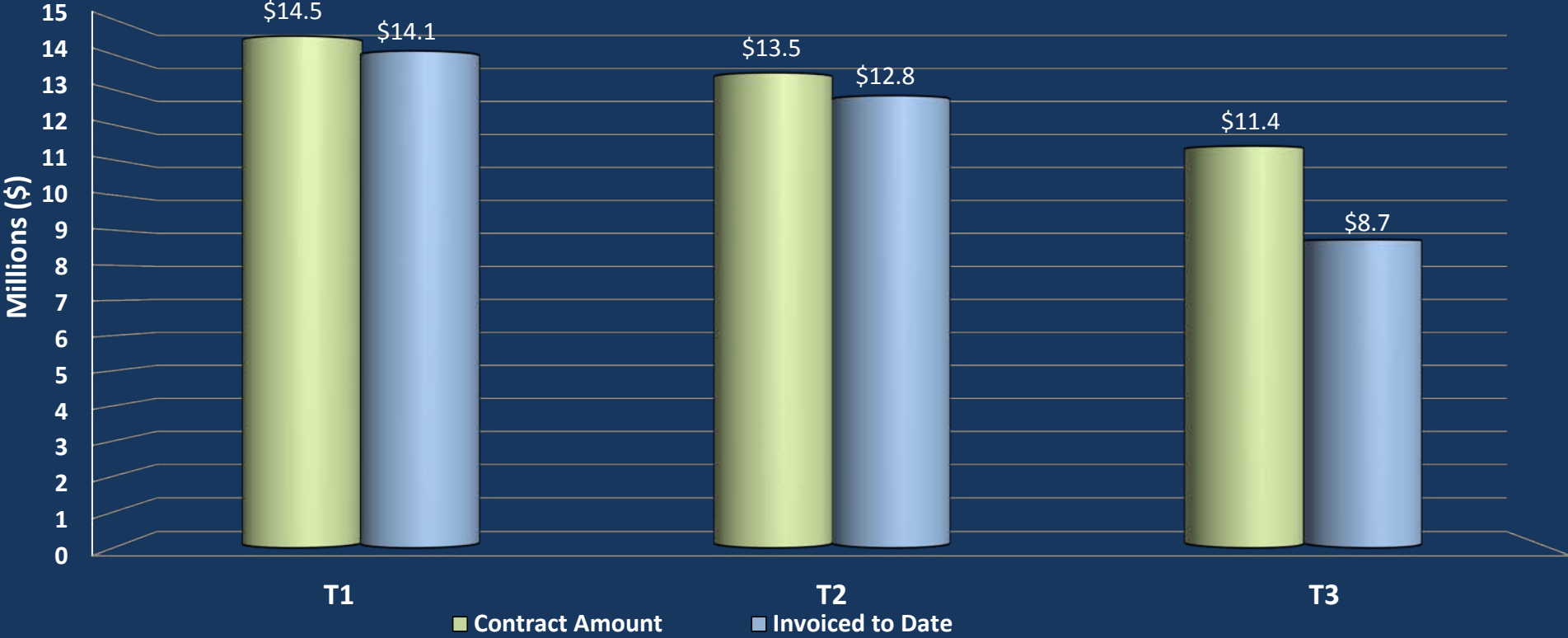
# TRANSMISSION LINE SYSTEM CONSTRUCTION ADMINISTRATION

## Project Data Thru 12/31/2014

Average Daily workforce:	148 workers
Piping installed to date:	48.7 miles
Average cost per day:	\$151,203
Percentage of pipe installed:	95%

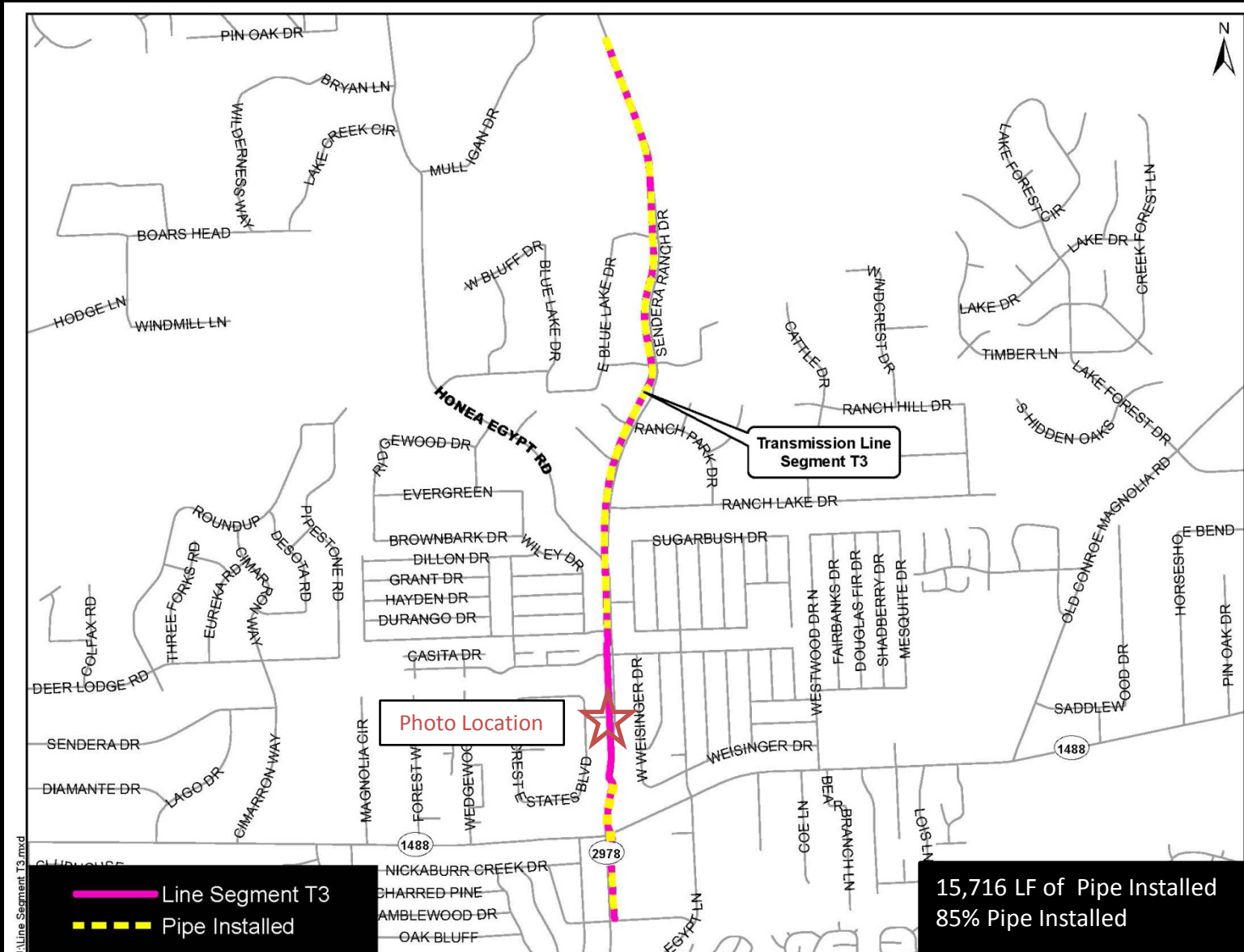


# SURFACE WATER TRANSMISSION SYSTEM "T" ROUTES - PROJECT DATA



# SURFACE WATER TRANSMISSION SYSTEM "T" ROUTES - PROJECT STATUS

Line	Overall % Complete	Testing % Complete	Substantial Completion	Final Completion
T1	97%	100%		
T2	95%	100%		
T3	77%			



Transmission Line Segment T3

Photo Location

Line Segment T3  
 Pipe Installed

15,716 LF of Pipe Installed  
 85% Pipe Installed

LVLine Segment T3.mxd





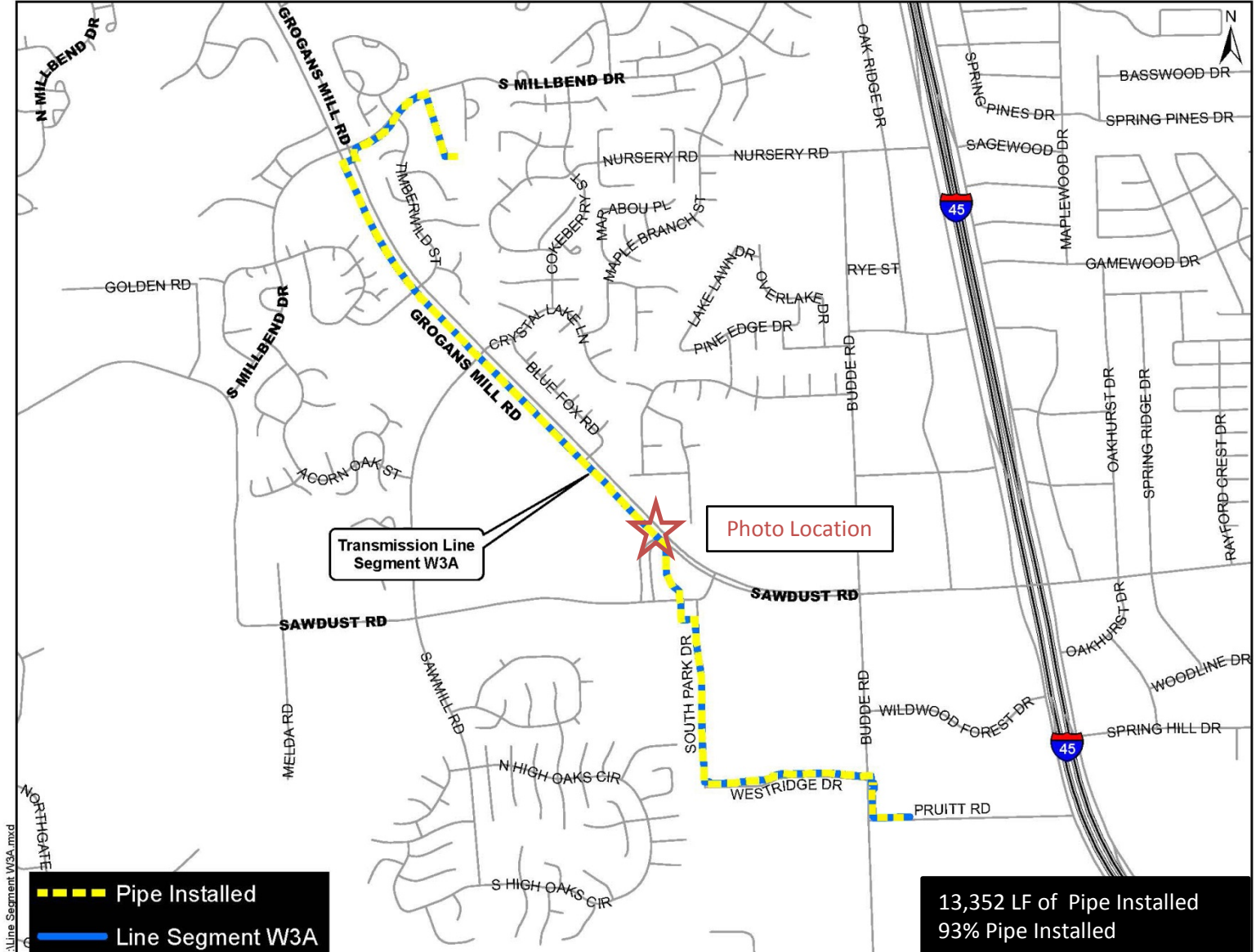
Staging for open cut construction along Sendera Ranch Road

# SURFACE WATER TRANSMISSION SYSTEM "W" ROUTES - PROJECT DATA



# SURFACE WATER TRANSMISSION SYSTEM "W" ROUTES - PROJECT STATUS

Line	Overall % Complete	Testing % Complete	Substantial Completion	Final Completion
W1A	91%	100%	✓	
W1B	93%	100%	✓	
W2A	93%	100%	✓	
W2B	92%	100%	✓	
W3A	91%			
W3B	75%			
W4	90%	100%	✓	



Transmission Line Segment W3A

Photo Location

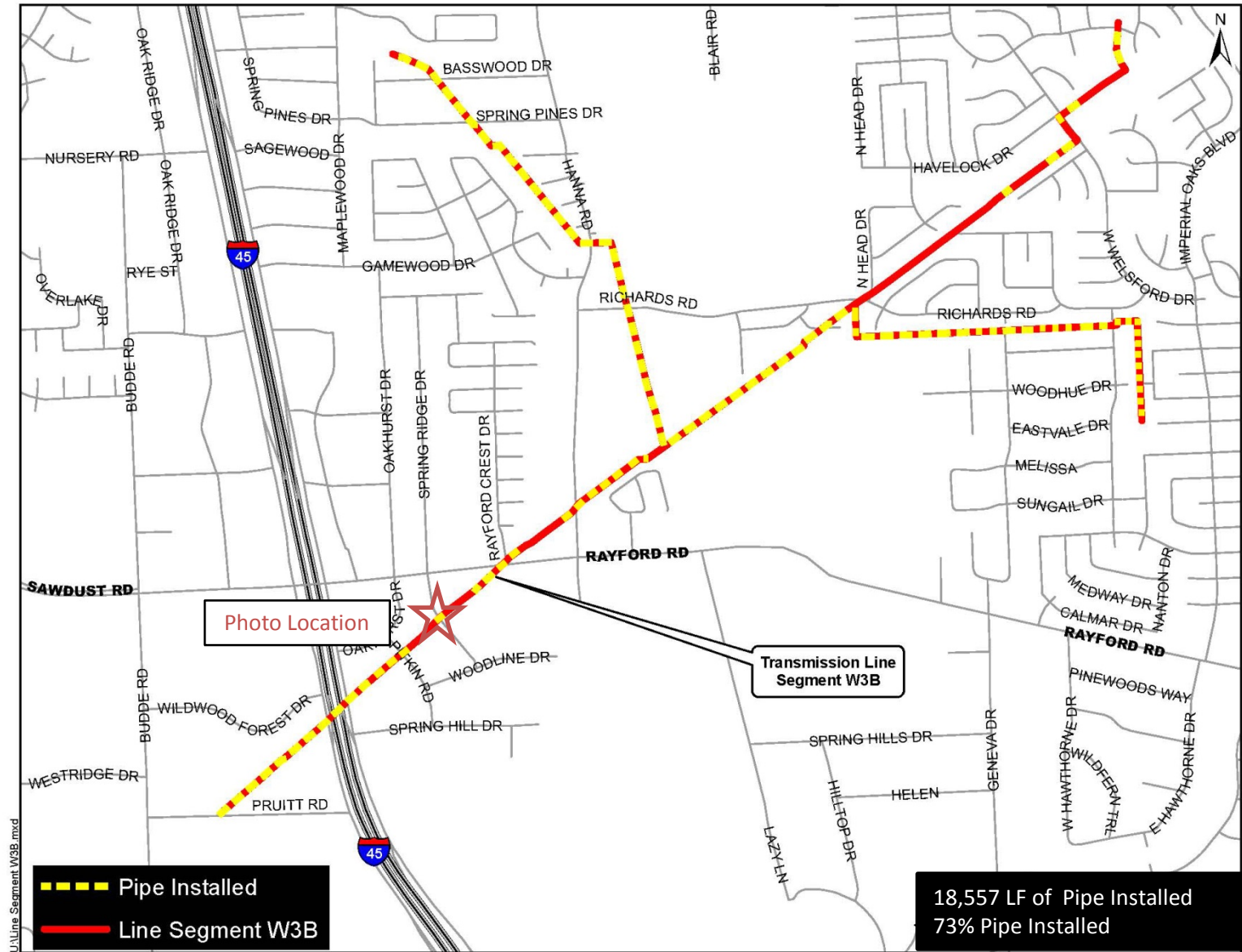
- Pipe Installed
- Line Segment W3A

13,352 LF of Pipe Installed  
93% Pipe Installed

L:\Line Segment W3A.mxd



Site restoration along Grogans Mill Road



U:\Line Segment W3B.mxd

- Pipe Installed
- Line Segment W3B

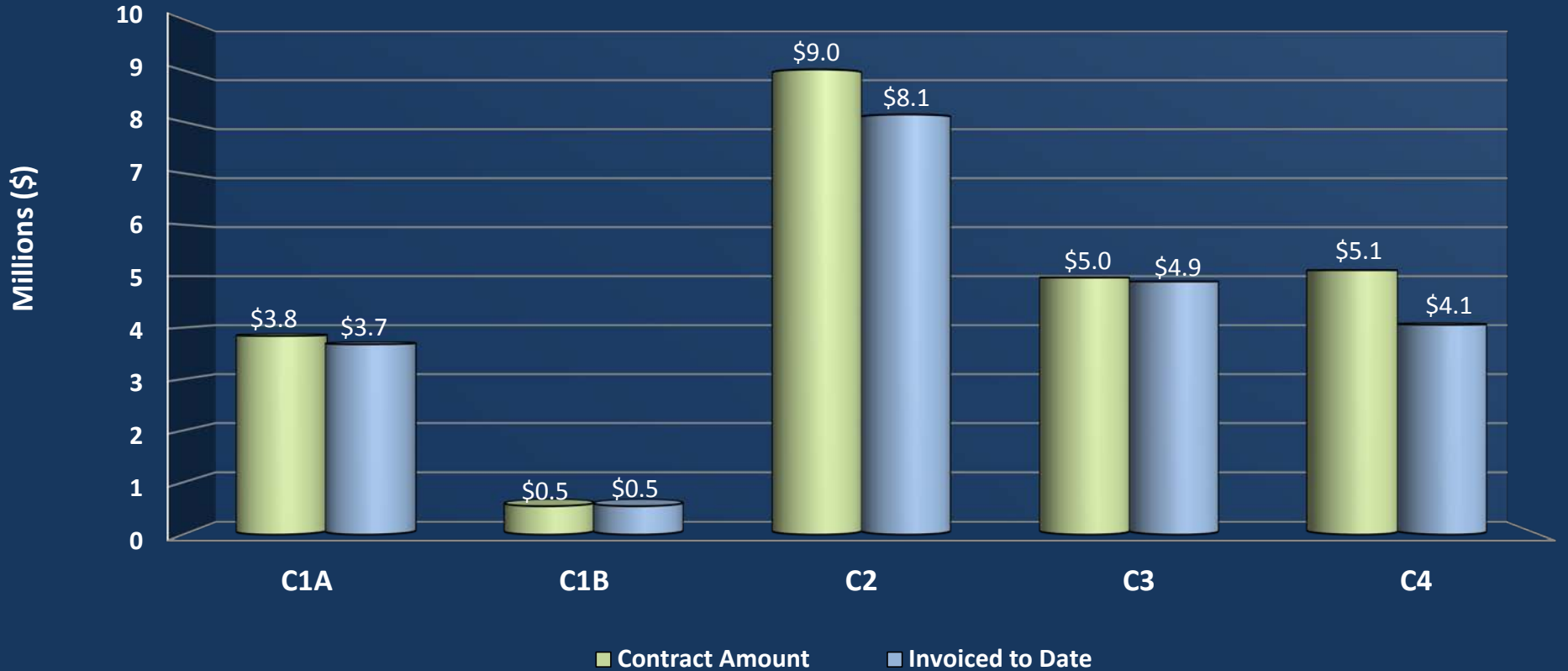
Transmission Line Segment W3B

18,557 LF of Pipe Installed  
73% Pipe Installed



Open cut construction along Kinder Morgan pipeline easement

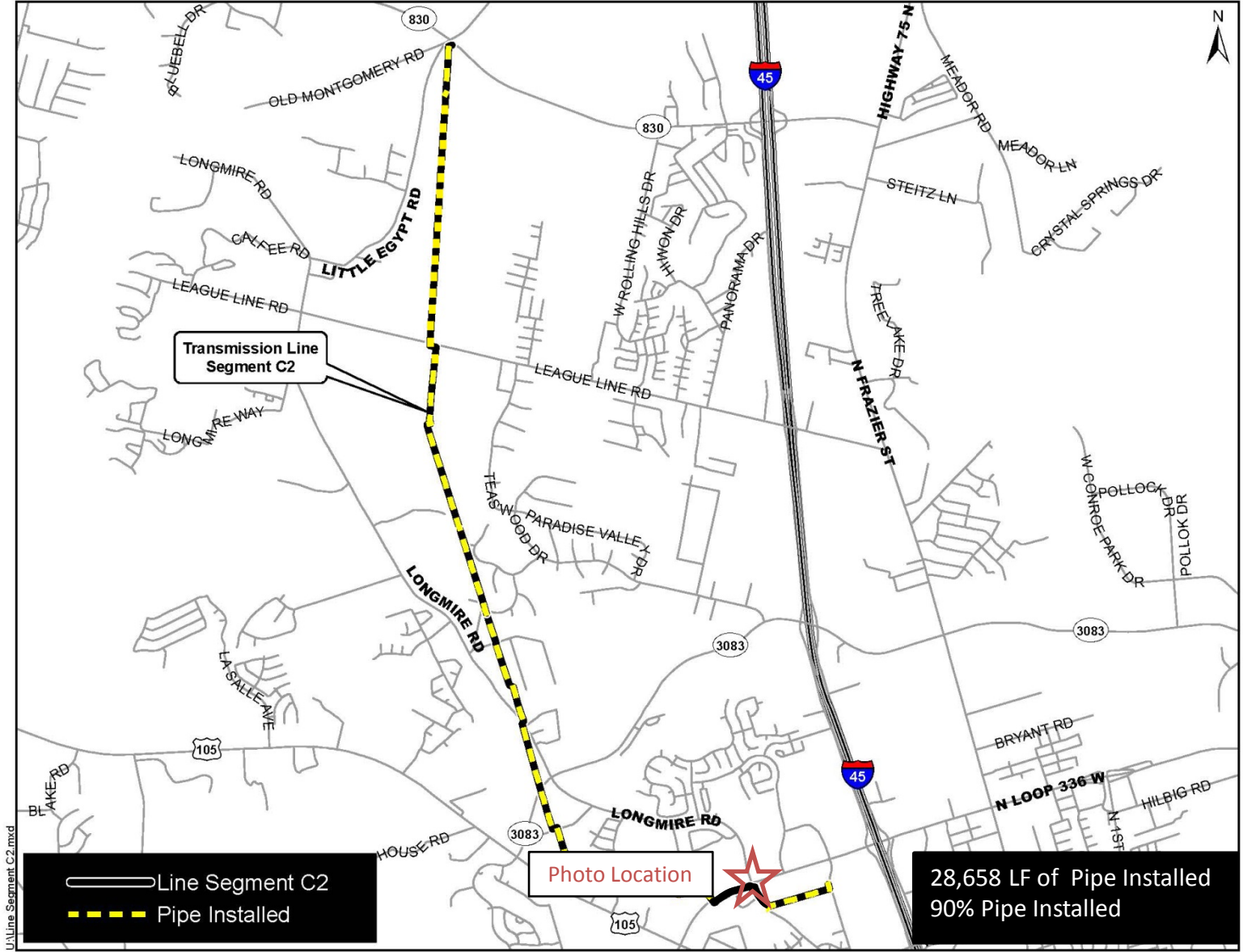
# SURFACE WATER TRANSMISSION SYSTEM "C" ROUTES - PROJECT DATA





# SURFACE WATER TRANSMISSION SYSTEM "C" ROUTES - PROJECT STATUS

Line	Overall % Complete	Testing % Complete	Substantial Completion	Final Completion
C1A	96%	100%	✓	
C1B	100%	100%	✓	✓
C2	90%			
C3	98%	100%	✓	
C4	79%	100%		



Transmission Line Segment C2

Photo Location

28,658 LF of Pipe Installed  
90% Pipe Installed

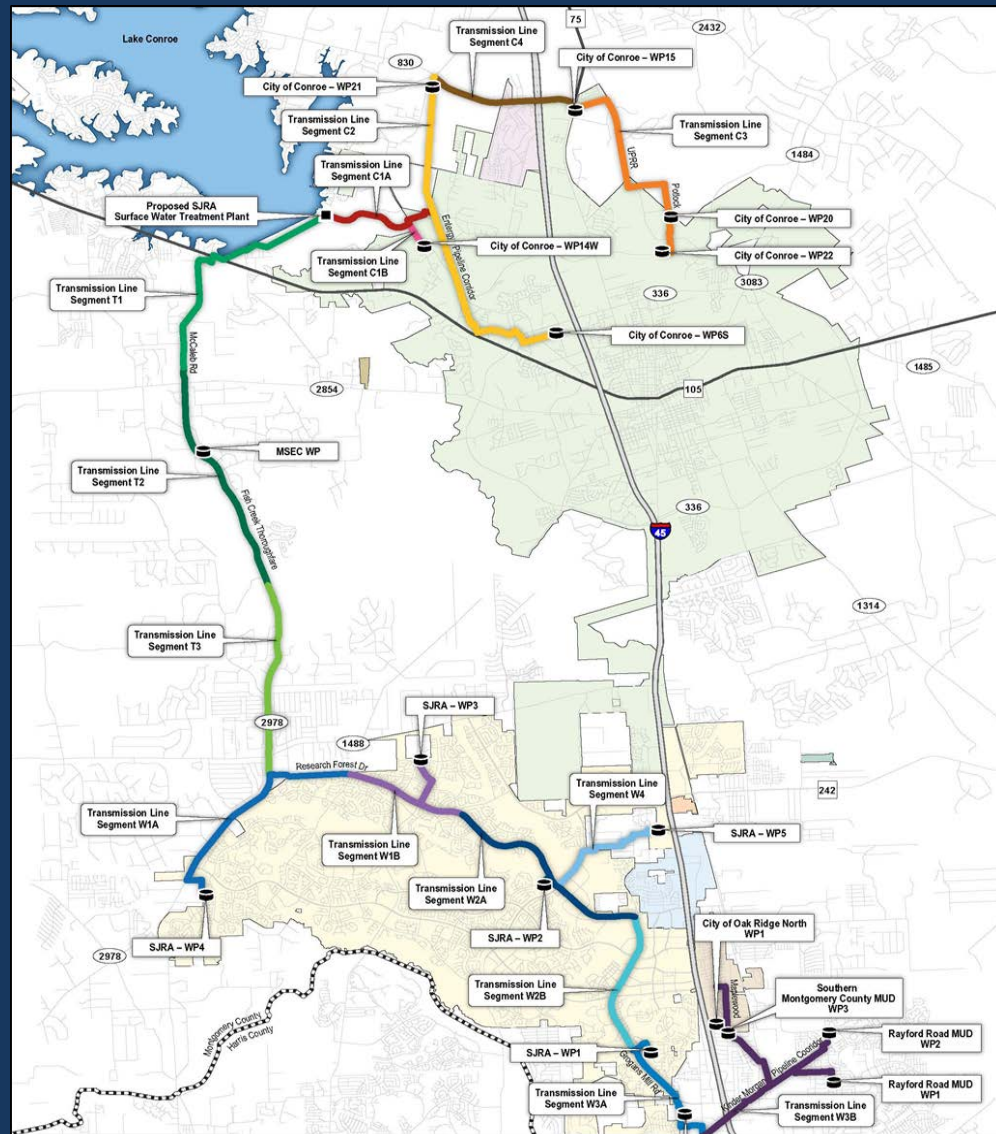
- Line Segment C2
- - - Pipe Installed

UVLine Segment C2.mxd

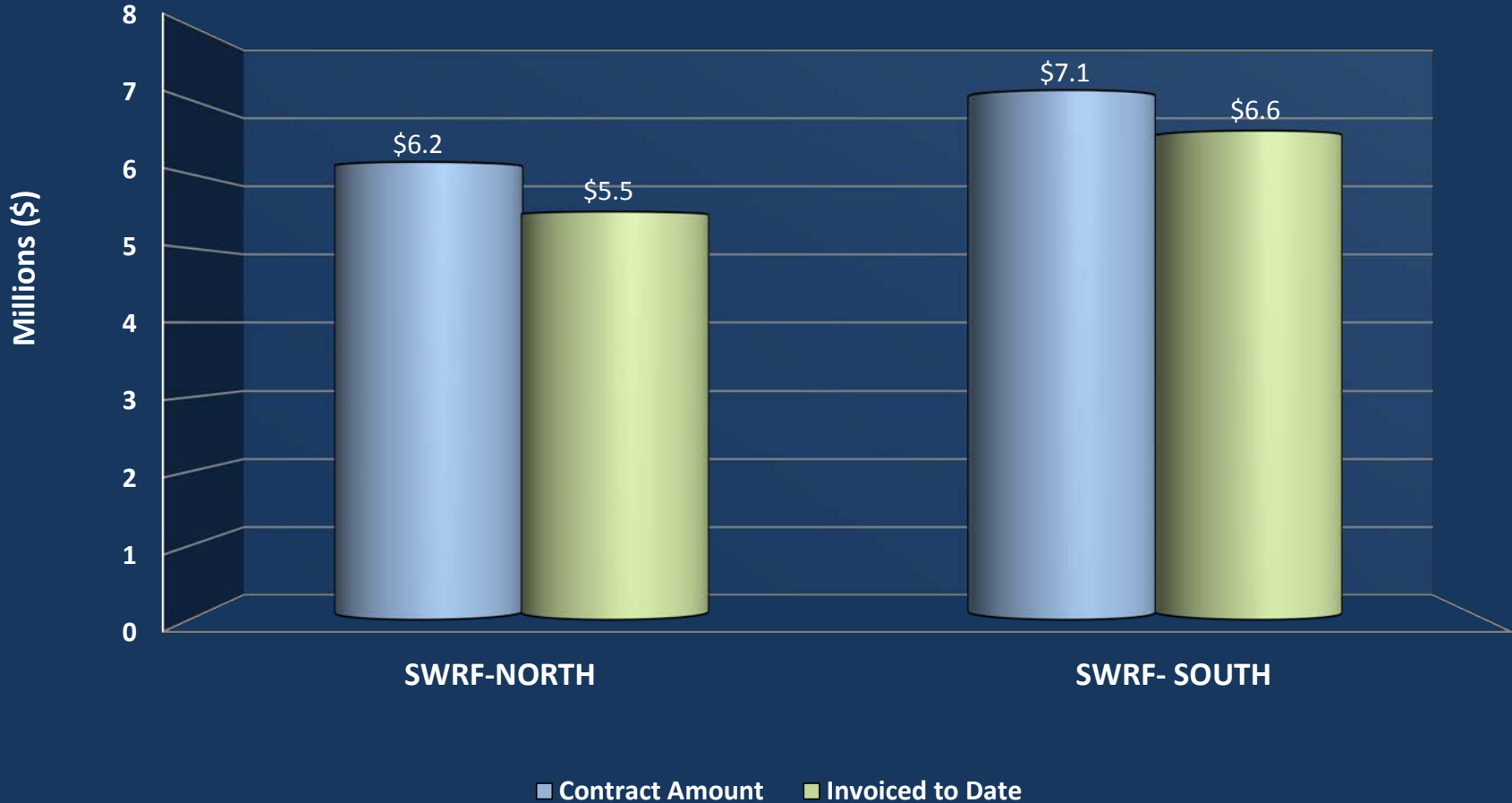


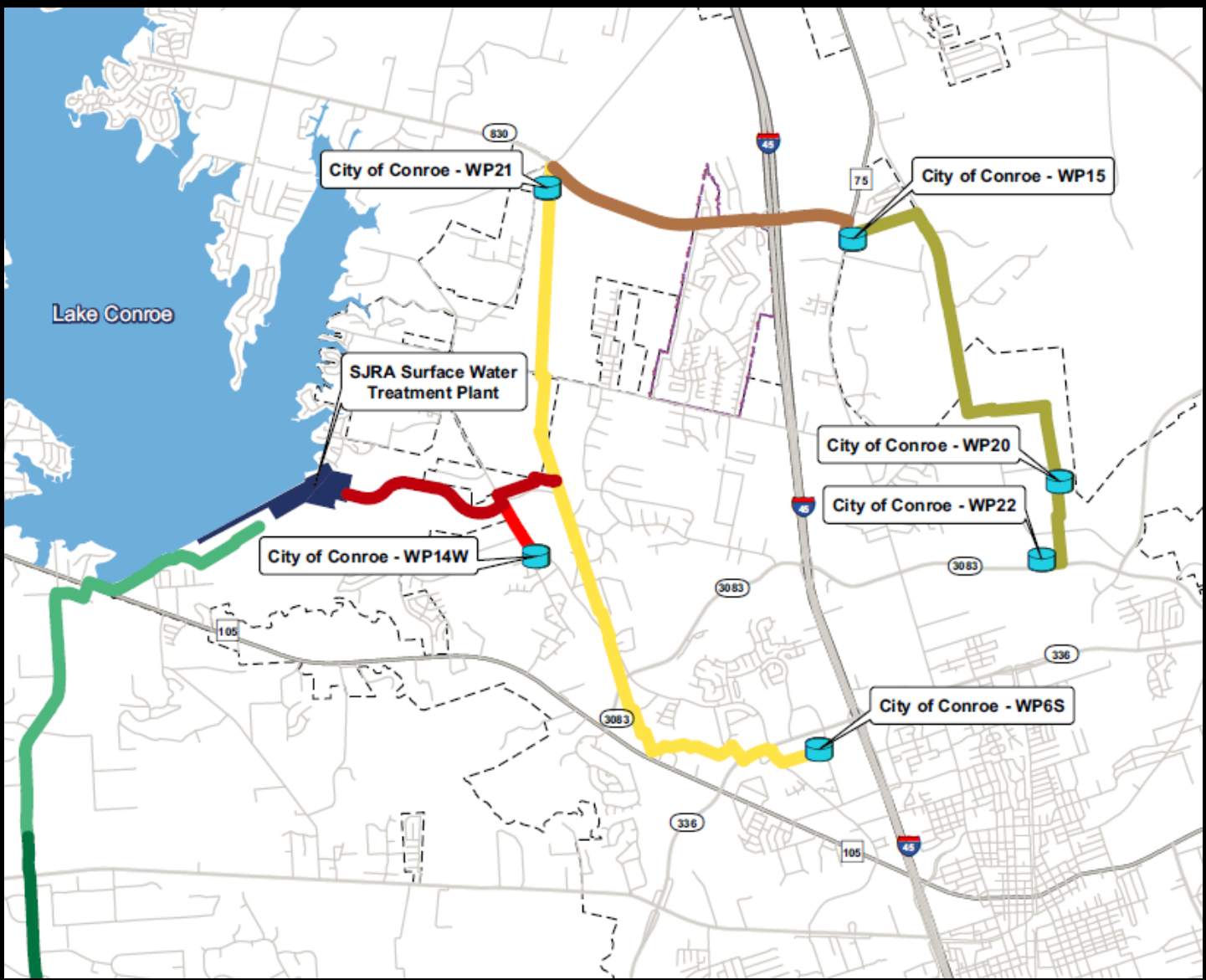
Utility locates for tunnel construction at Longmire Road and Loop 336

# SURFACE WATER RECEIVING FACILITIES CONSTRUCTION PROGRESS



# SURFACE WATER TRANSMISSION SYSTEM RECEIVING FACILITIES - PROJECT DATA







City of Conroe Water Plant No. 6S



City of Conroe Water Plant No. 14W



City of Conroe Water Plant No. 15



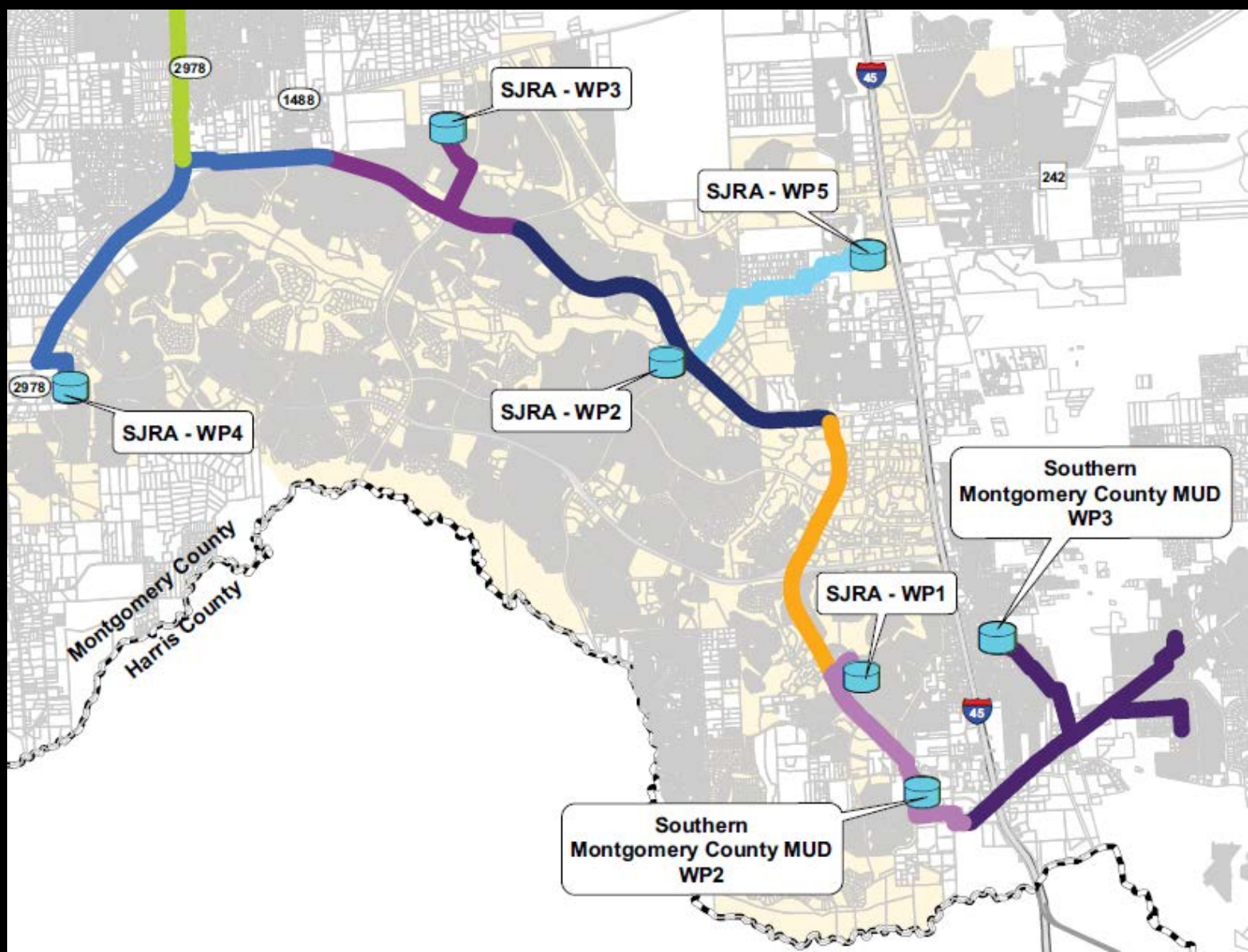
City of Conroe Water Plant No. 20



City of Conroe Water Plant No. 21



City of Conroe Water Plant No. 22







SJRA Water Plant No. 1



SJRA Water Plant No. 2



SJRA Water Plant No. 3



SJRA Water Plant No. 4



SJRA Water Plant No. 5

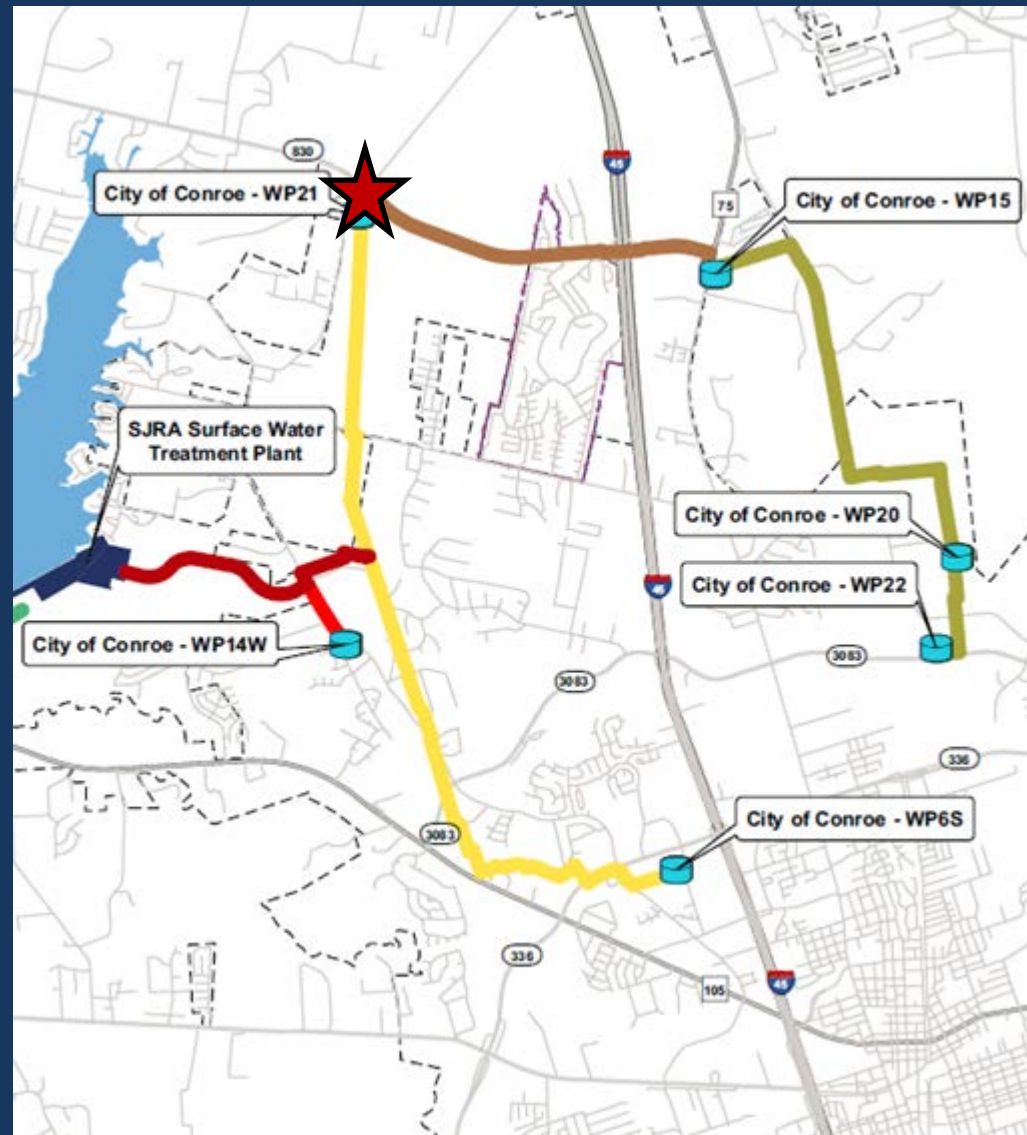


SMCMUD Water Plant No. 2



SMCMUD Water Plant No. 3

# SURFACE WATER STANDPIPE CONSTRUCTION PROGRESS



# SURFACE WATER TRANSMISSION SYSTEM STANDPIPE - PROJECT DATA

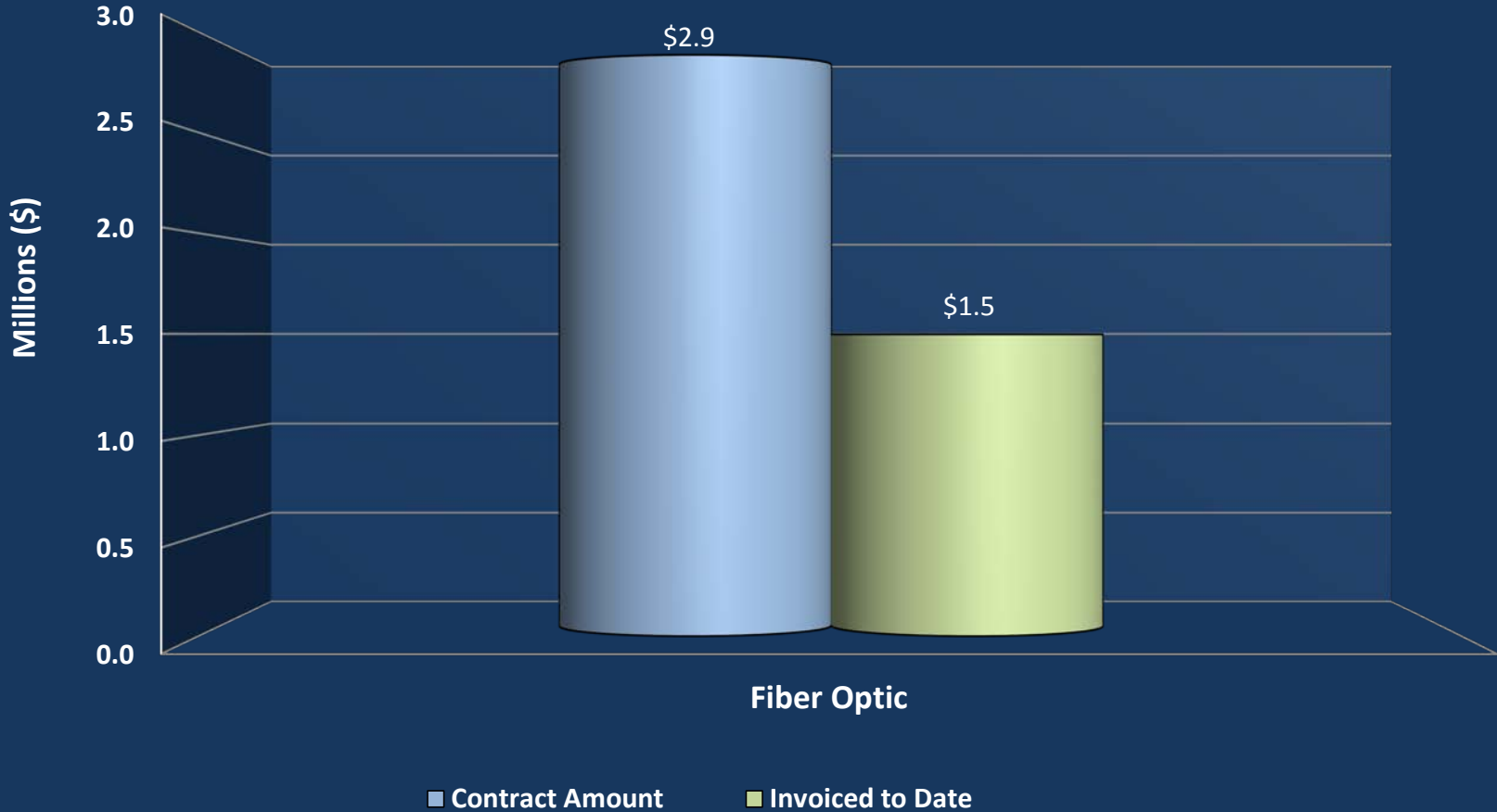




Continuation of yard piping at Standpipe



# SURFACE WATER TRANSMISSION SYSTEM FIBER OPTIC - PROJECT DATA



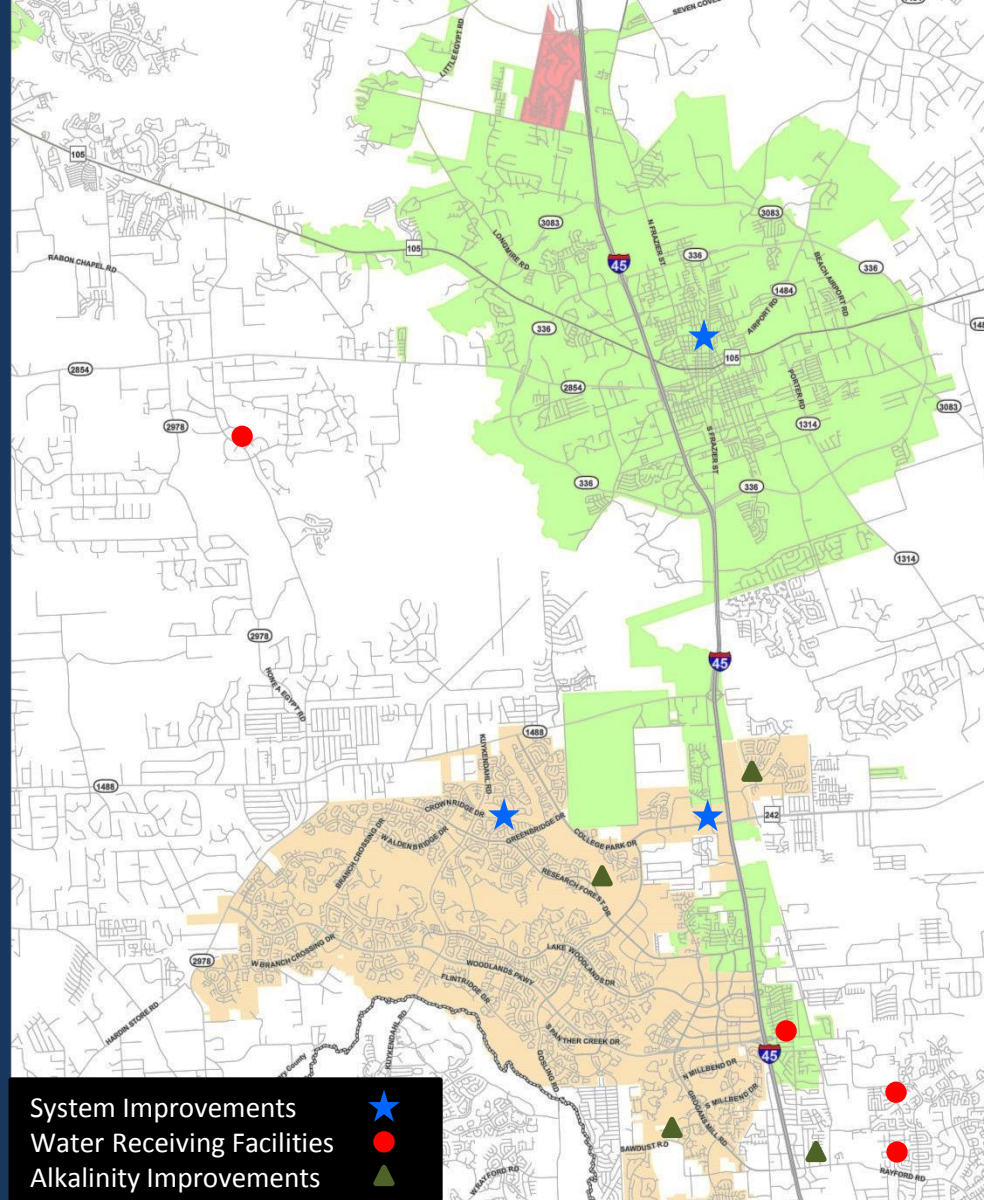


Fiber Optic splicing and testing at City of Conroe Water Plant No. 20

# Facility Improvements By GRP Participants

(Contract Amount)

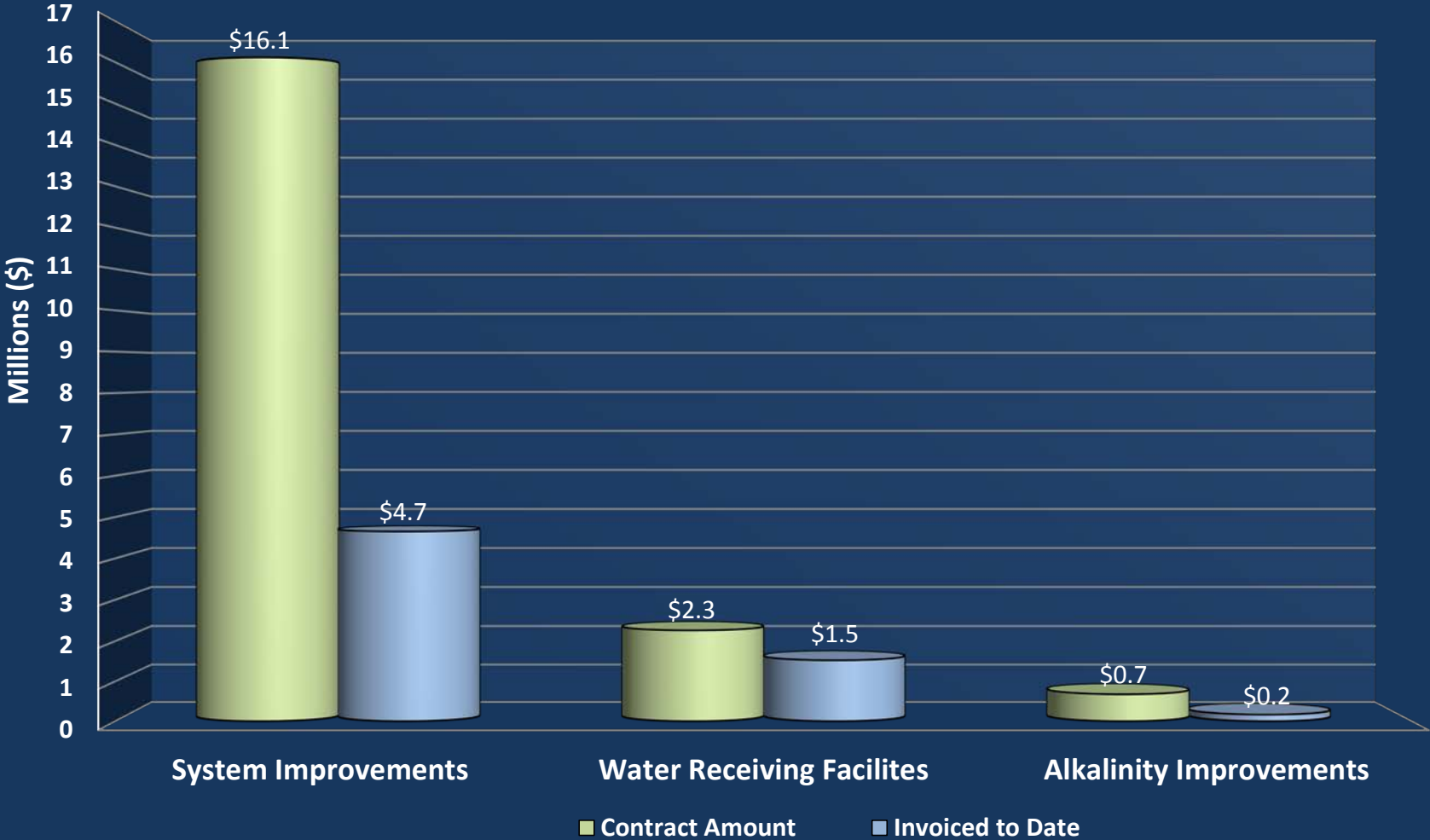
System Improvements	\$ 16,117,794.31
Water Receiving Facilities	\$ 2,259,088.00
Alkalinity Improvements	\$ 674,997.00
<b>Total System Improvements</b>	<b>\$ 19,099,643.70</b>



System Improvements ★  
 Water Receiving Facilities ●  
 Alkalinity Improvements ▲



# FACILITY IMPROVEMENTS BY GRP PARTICIPANTS



# SURFACE WATER TRANSMISSION SYSTEM CONSTRUCTION PROGRESS

## QUESTIONS?

