

GRP PROGRAM CONSTRUCTION PROGRESS



**GRP Review
Committee
Meeting
May 19, 2014**



**SJRA Board
of Directors
Meeting
May 22, 2014**

SURFACE WATER FACILITY CONSTRUCTION ADMINISTRATION

Project Data Thru 4/30/2014

Contracted Amount:	\$190,704,740.00
Change Orders:	\$ 0.00
Estimate to Complete:	\$190,704,740.00
Amount Invoiced:	\$108,984,444.00
Percent Complete:	57%
Completion Date:	June 2015



SURFACE WATER FACILITY CONSTRUCTION ADMINISTRATION

Project Data Thru 4/30/2014

- Plant startup and commissioning plan development is underway
- Major plant equipment deliveries has begun
- Plant construction daily workforce is approximately 315 workers





**Raw Water Intake
and Pump Station**





Raw Water Intake & Pump Station - Previous progress photograph



Raw Water Intake & Pump Station – Pump barrel installation

**GAC
Contactors**



**Membrane
Building**



**Chemical
Facilities**

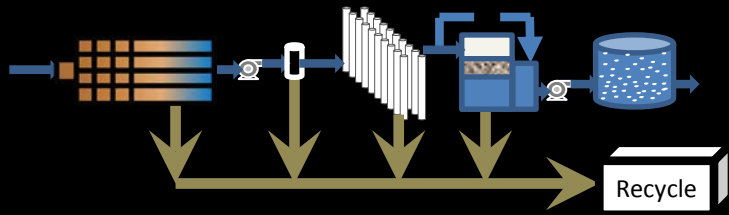


**Pretreatment
Facilities**

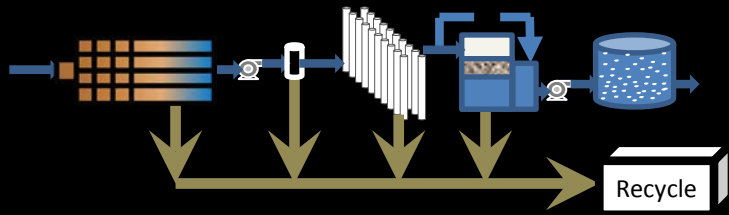


Water Treatment Process Structures

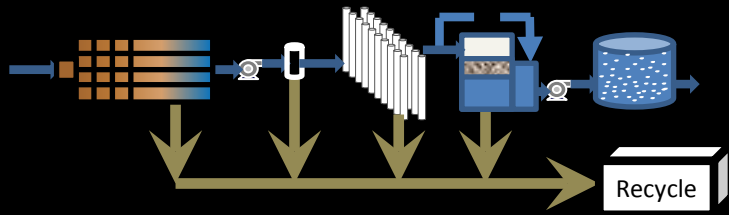




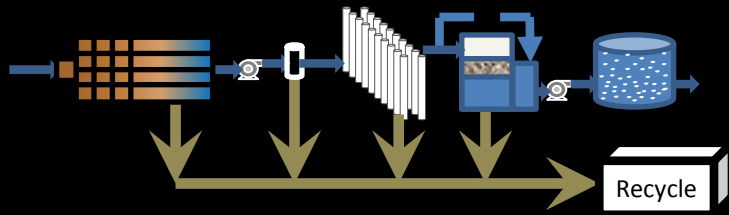
Pretreatment Facility – Previous progress photograph



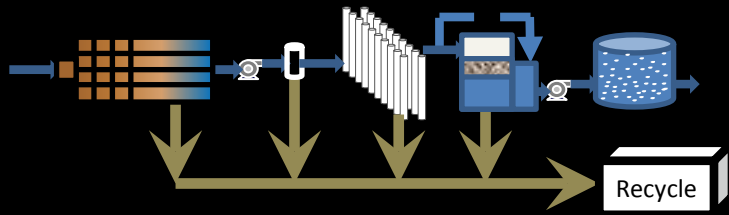
Pretreatment Facility – Preparation of equipment installation



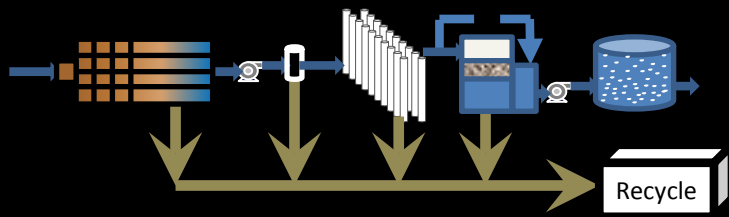
Membrane Building – Previous progress photograph



Membrane Building – Installation of membrane equipment racks and piping



Granulated Activated Carbon Contactors – Previous progress photograph

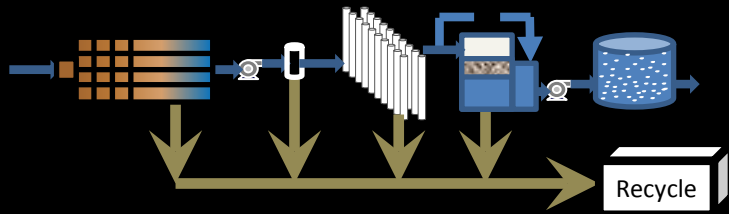


Granulated Activated Carbon Contactors – Pipe gallery installation

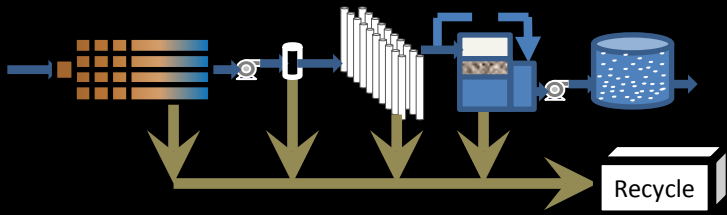


**High Service Pump Station,
GST's, and Blower Building**

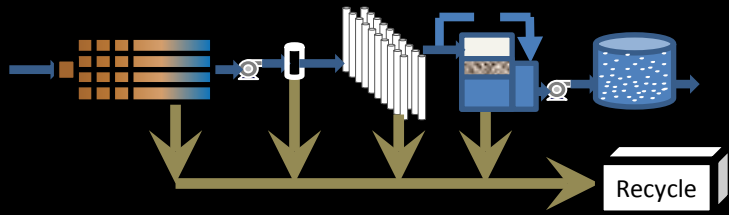
Finished Water Process Structures



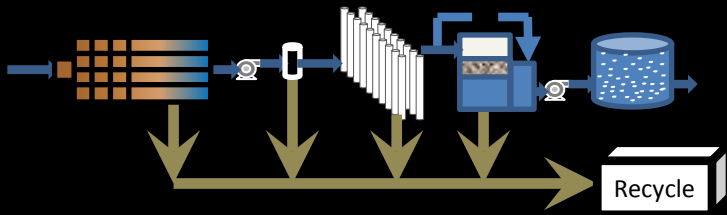
High Service Pump Station - Previous progress photograph



High Service Pump Station – Installation of mechanical louvers



Blower Building – Previous progress photograph



Blower Building – Cleaning and preparation for blower equipment installation

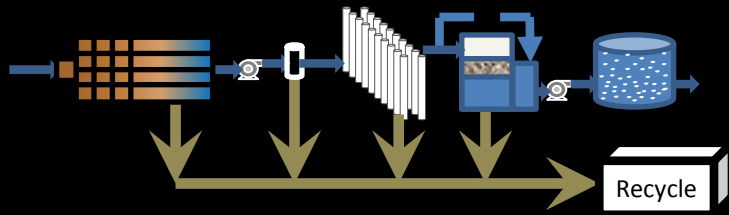


Solids-Waste Process Structures

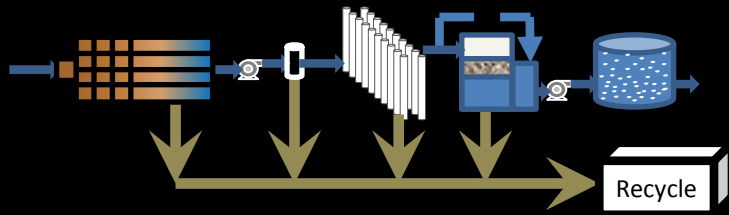
Backwash Equalization Basin



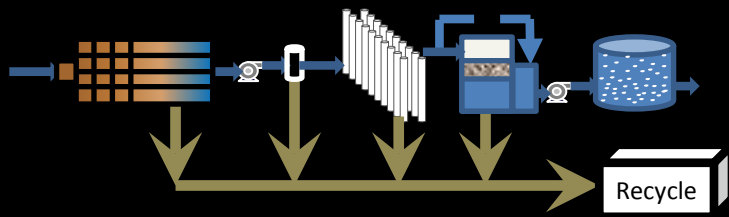
Process Residual Treatment and Disposal Structures



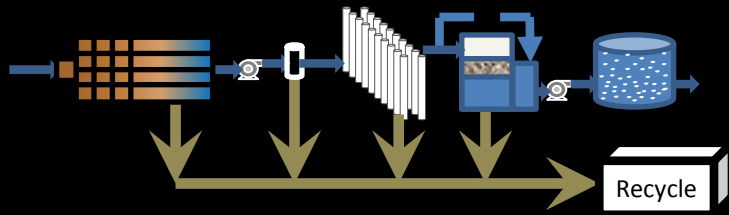
Dewatering Building – Previous progress photograph



Dewatering Building – Masonry installation



Backwash Equalization Basin— Previous progress photograph



Backwash Equalization Basin— Pump Station masonry installation

**Electrical
Facilities**

**Operations
Building**

Operational Structures



Operations Building – Previous progress photograph



Operations Building – Mechanical and plumbing installation



Operations Building – Roof framing and masonry installation



Electrical Facilities – Previous progress photograph



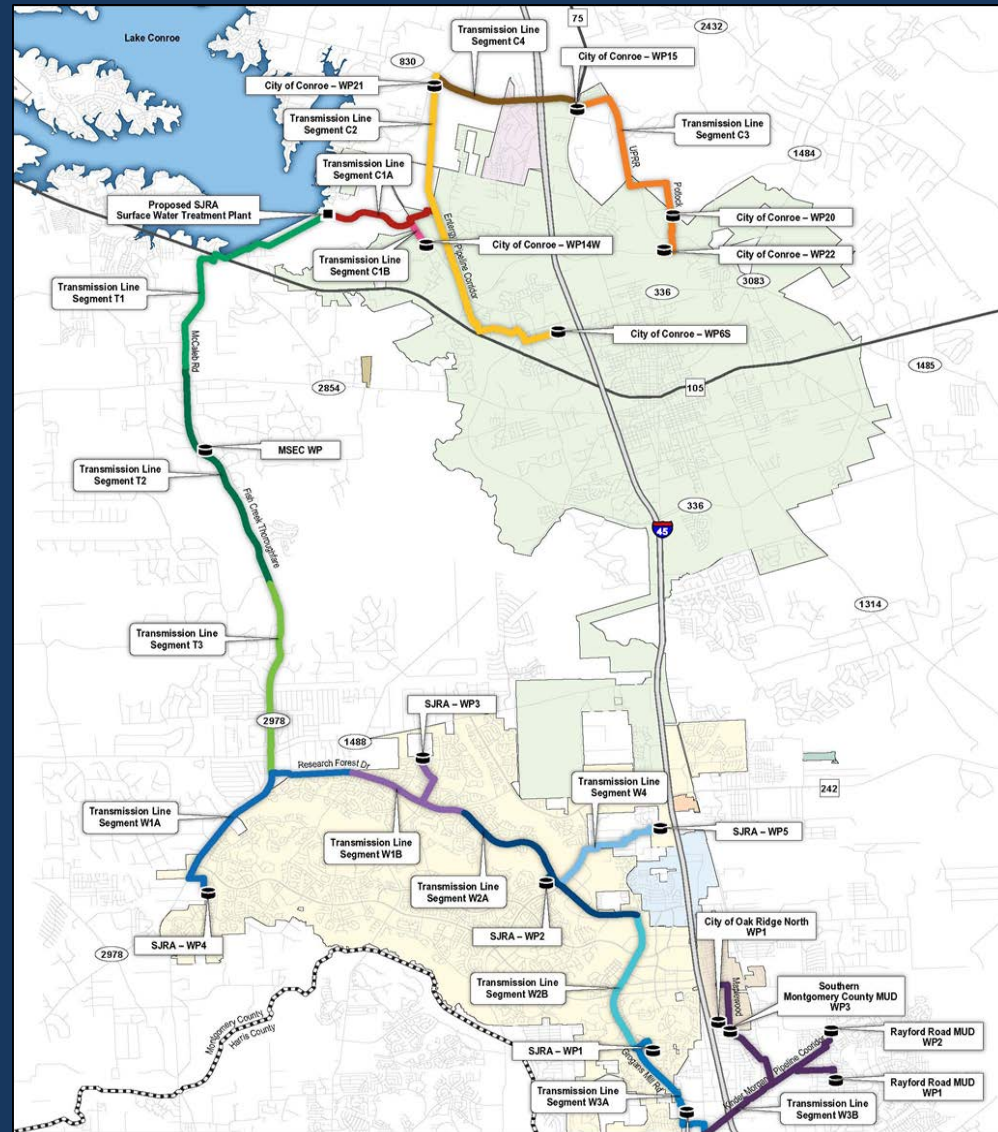
Electrical Facilities – Diesel fuel reservoirs

SURFACE WATER FACILITY CONSTRUCTION PROGRESS

Questions?



SURFACE WATER TRANSMISSION SYSTEM CONSTRUCTION PROGRESS



TRANSMISSION LINE SYSTEM CONSTRUCTION ADMINISTRATION

Project Data Thru 4/30/2014

Original Contract Amount: \$ 146,610,000.60

Change Orders: \$ 2,054,447.62

Total Contract Amount: \$148,665,448.22

Amount Invoiced: \$ 78,231,195.02

Percent Complete: 53%

Estimated Completion Date: May 2015



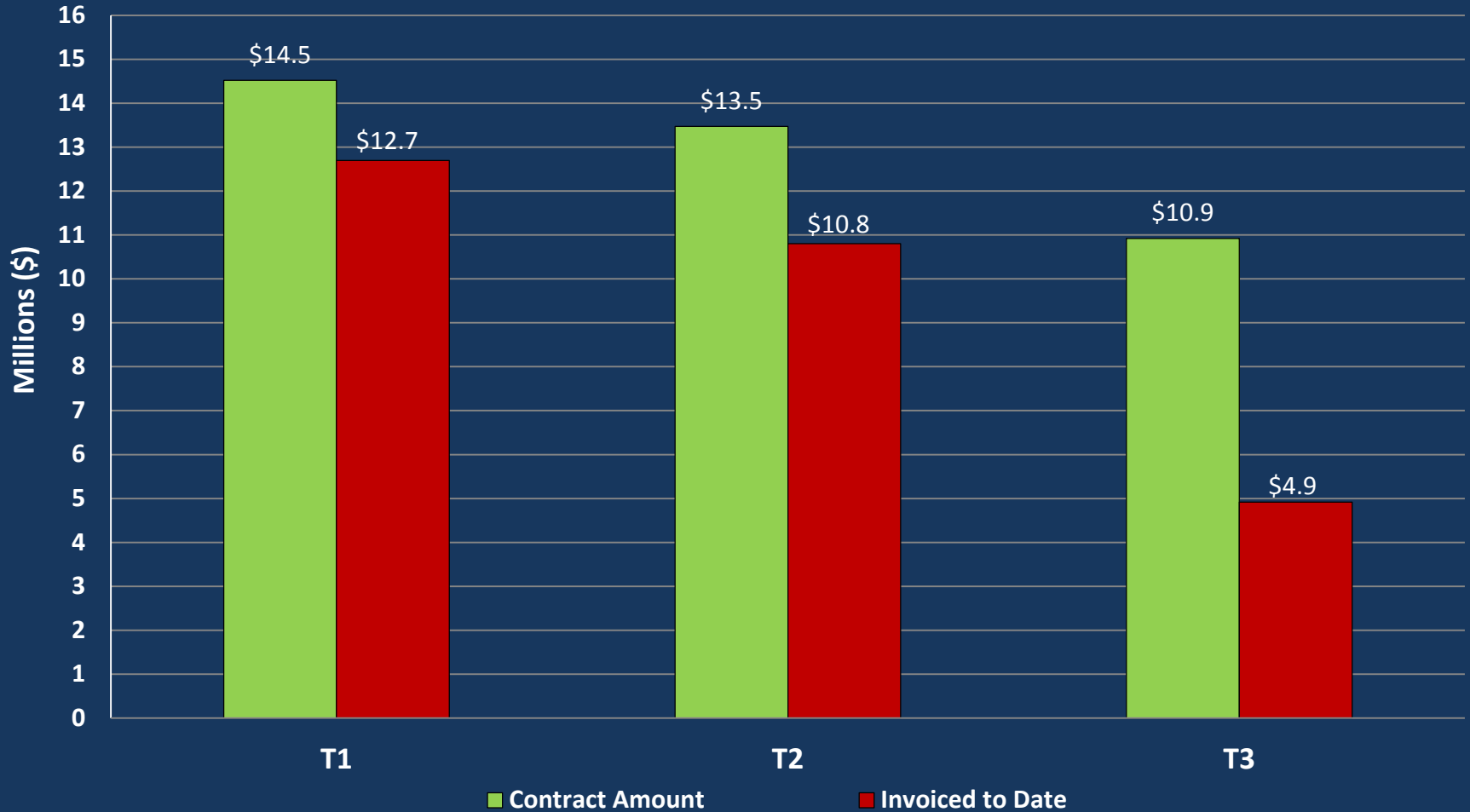
TRANSMISSION LINE SYSTEM CONSTRUCTION ADMINISTRATION

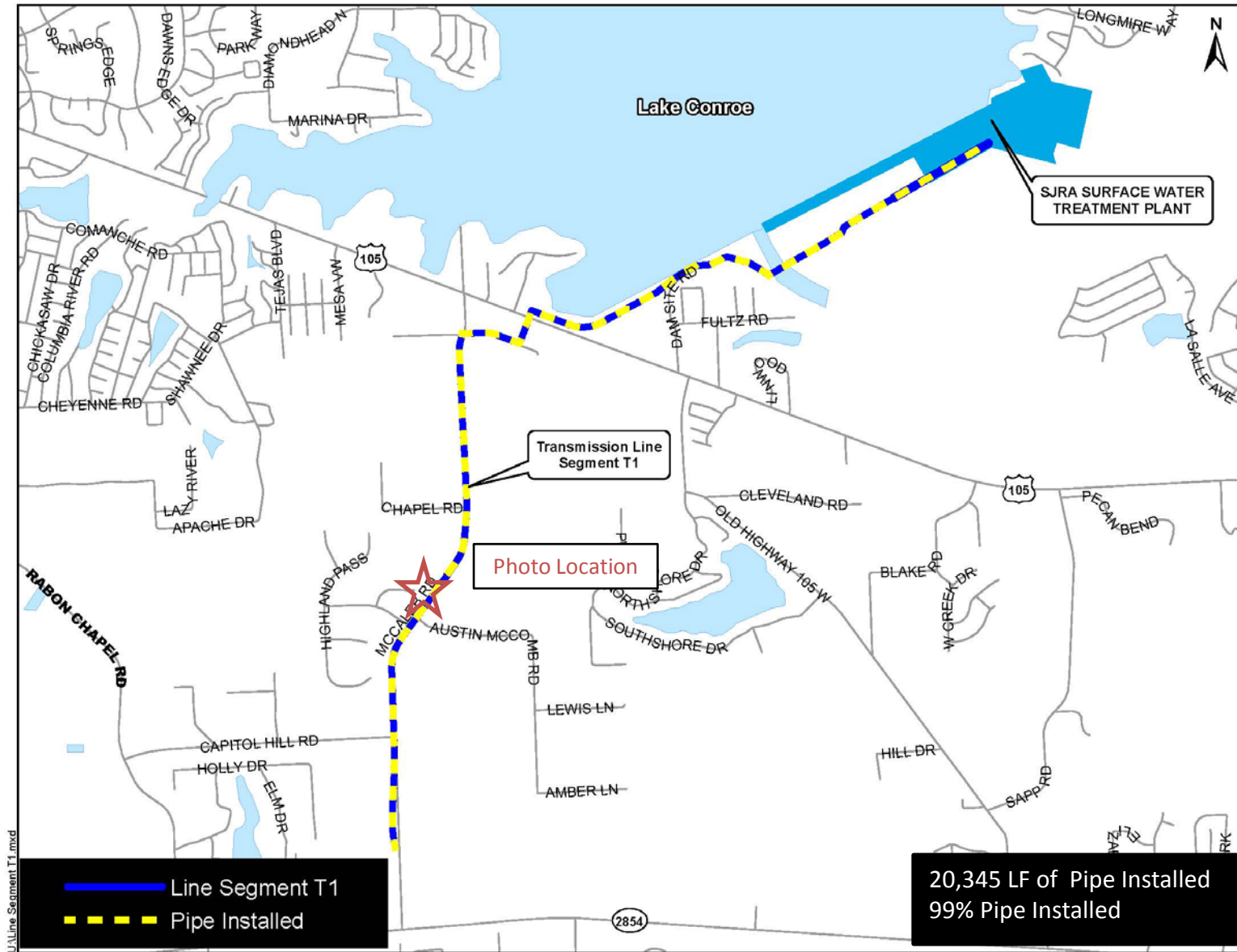
Project Data Thru 4/30/2014

Average Daily workforce:	337 workers
Piping installed to date:	29.3 miles
Average cost per day:	\$260,000
Percentage of pipe installed:	57%



SURFACE WATER TRANSMISSION SYSTEM "T" ROUTES - PROJECT DATA





SJRA SURFACE WATER TREATMENT PLANT

Transmission Line Segment T1

Photo Location

- Line Segment T1
- Pipe Installed

20,345 LF of Pipe Installed
99% Pipe Installed



Asphalt pavement repairs along McCaleb Road

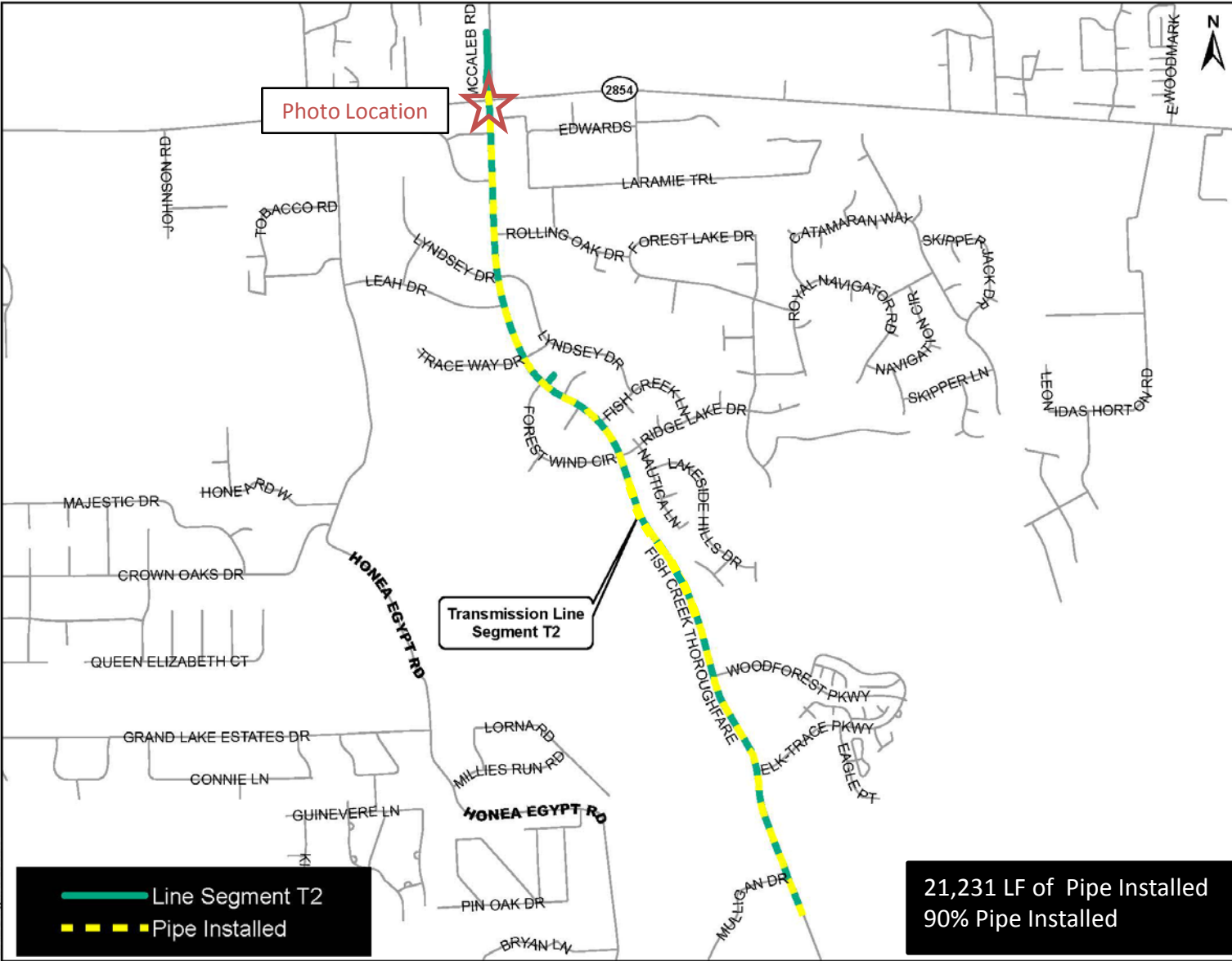


Photo Location

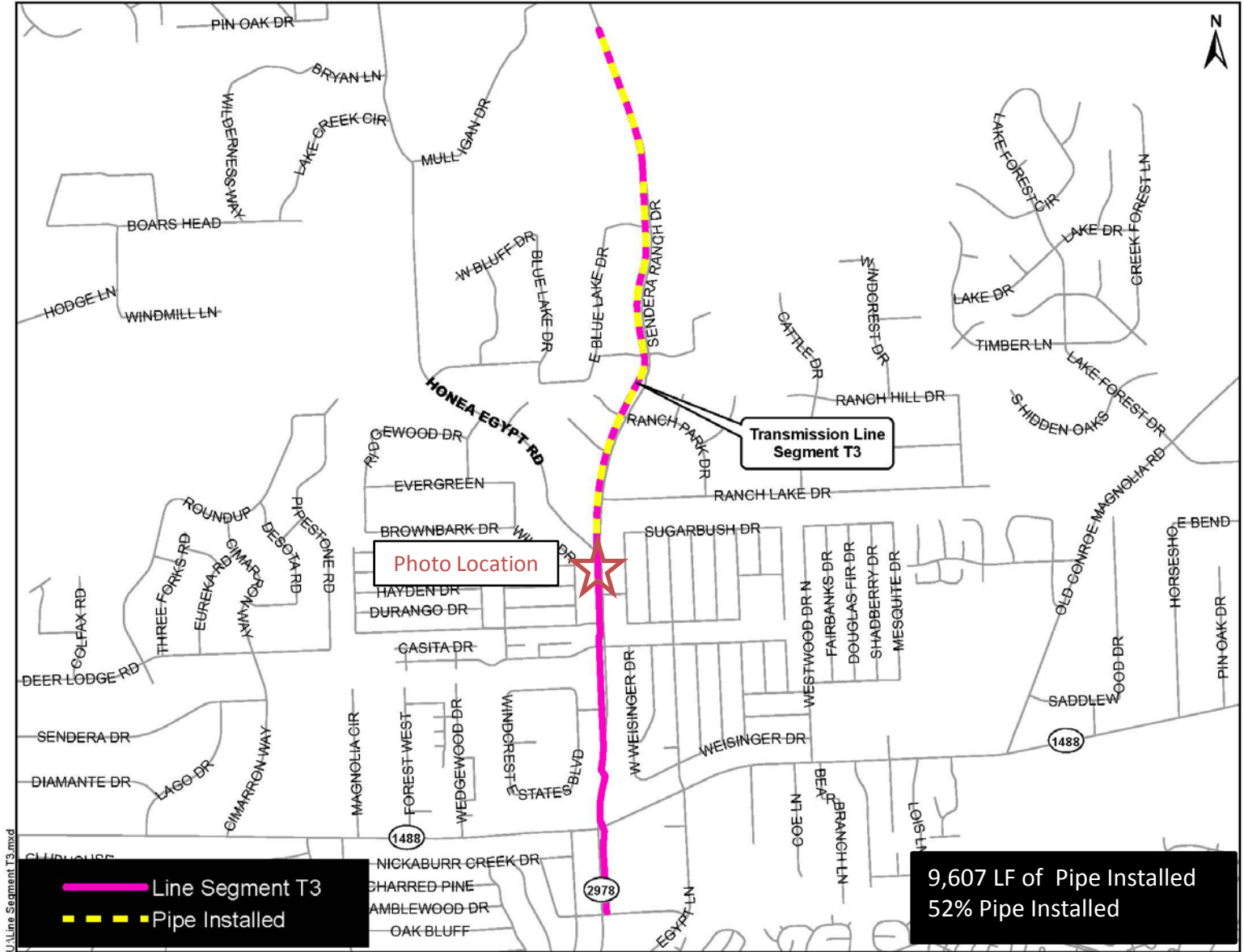
Transmission Line Segment T2

Line Segment T2
 Pipe Installed

21,231 LF of Pipe Installed
 90% Pipe Installed



54-inch pipe installation at FM 2854



Line Segment T3
Pipe Installed

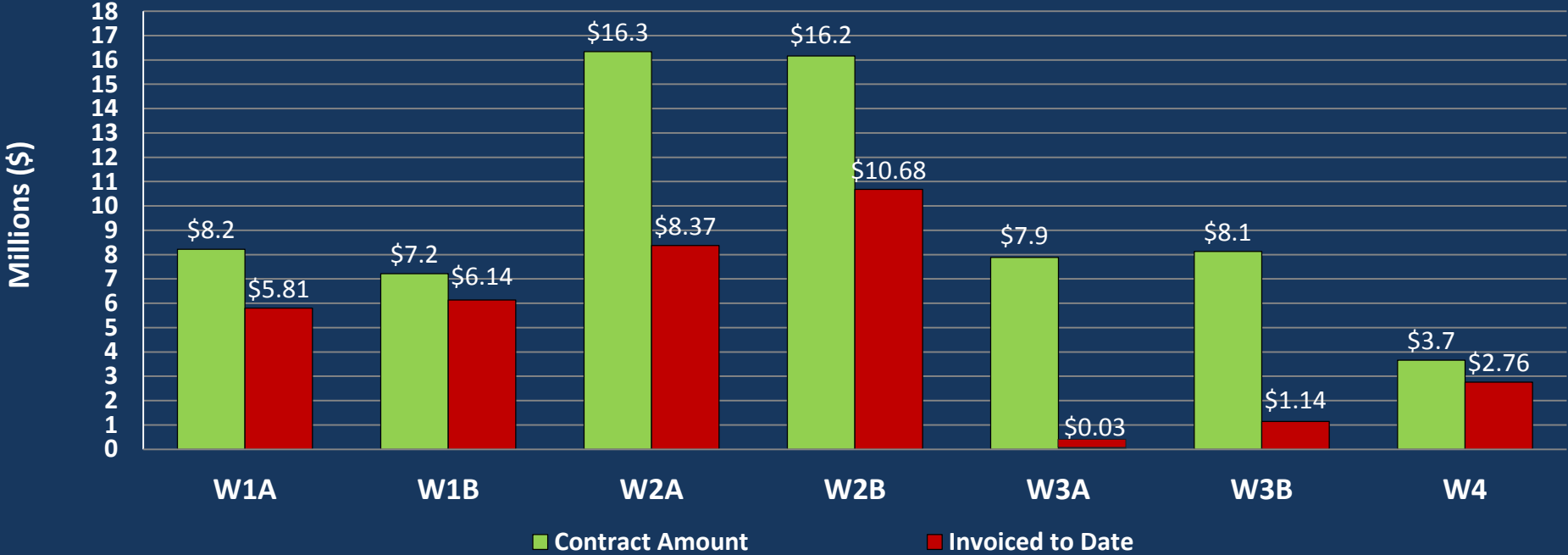
9,607 LF of Pipe Installed
52% Pipe Installed

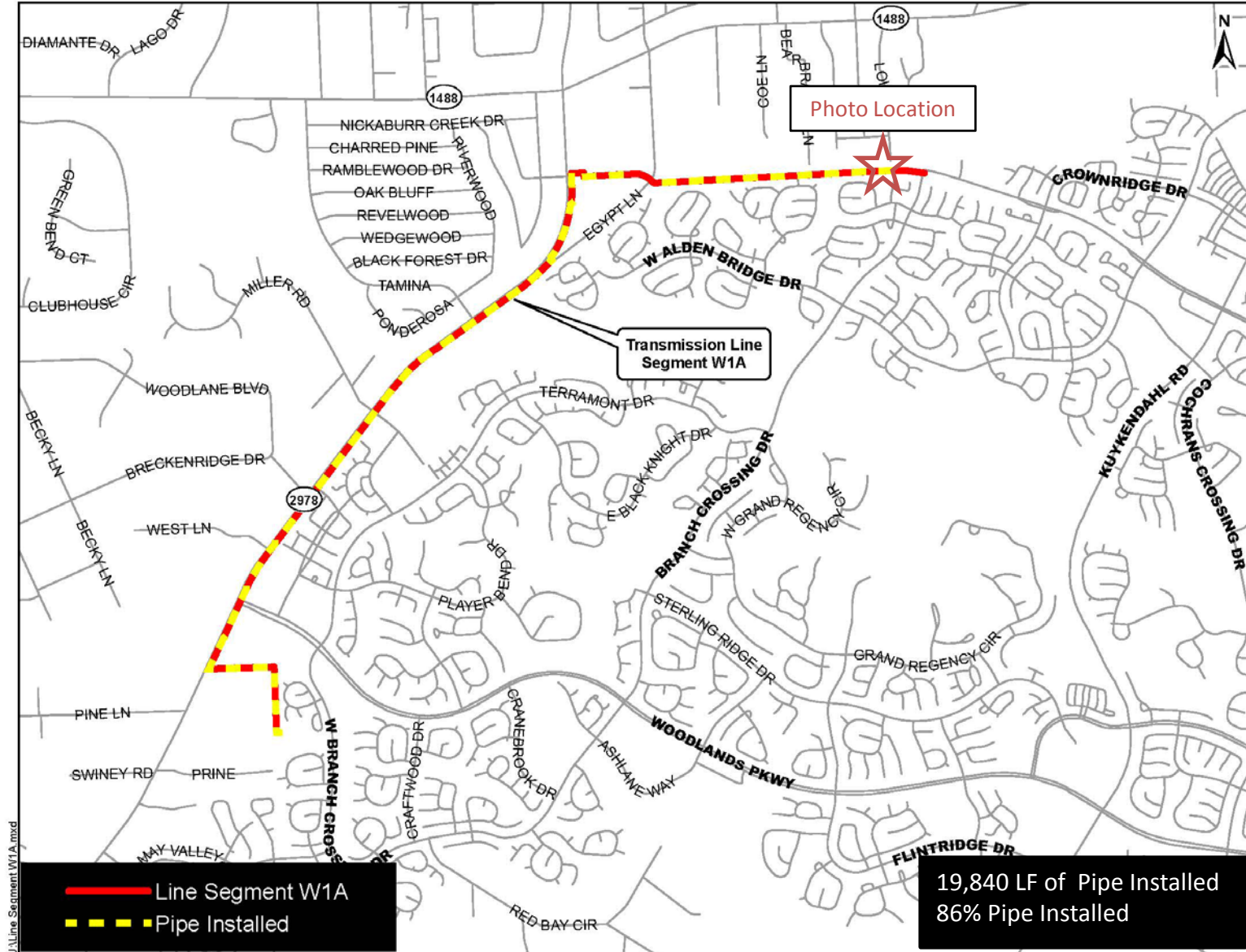
U:\Line Segment T3.mxd



54-inch pipe installation along Sendera Ranch Road

SURFACE WATER TRANSMISSION SYSTEM "W" ROUTES - PROJECT DATA





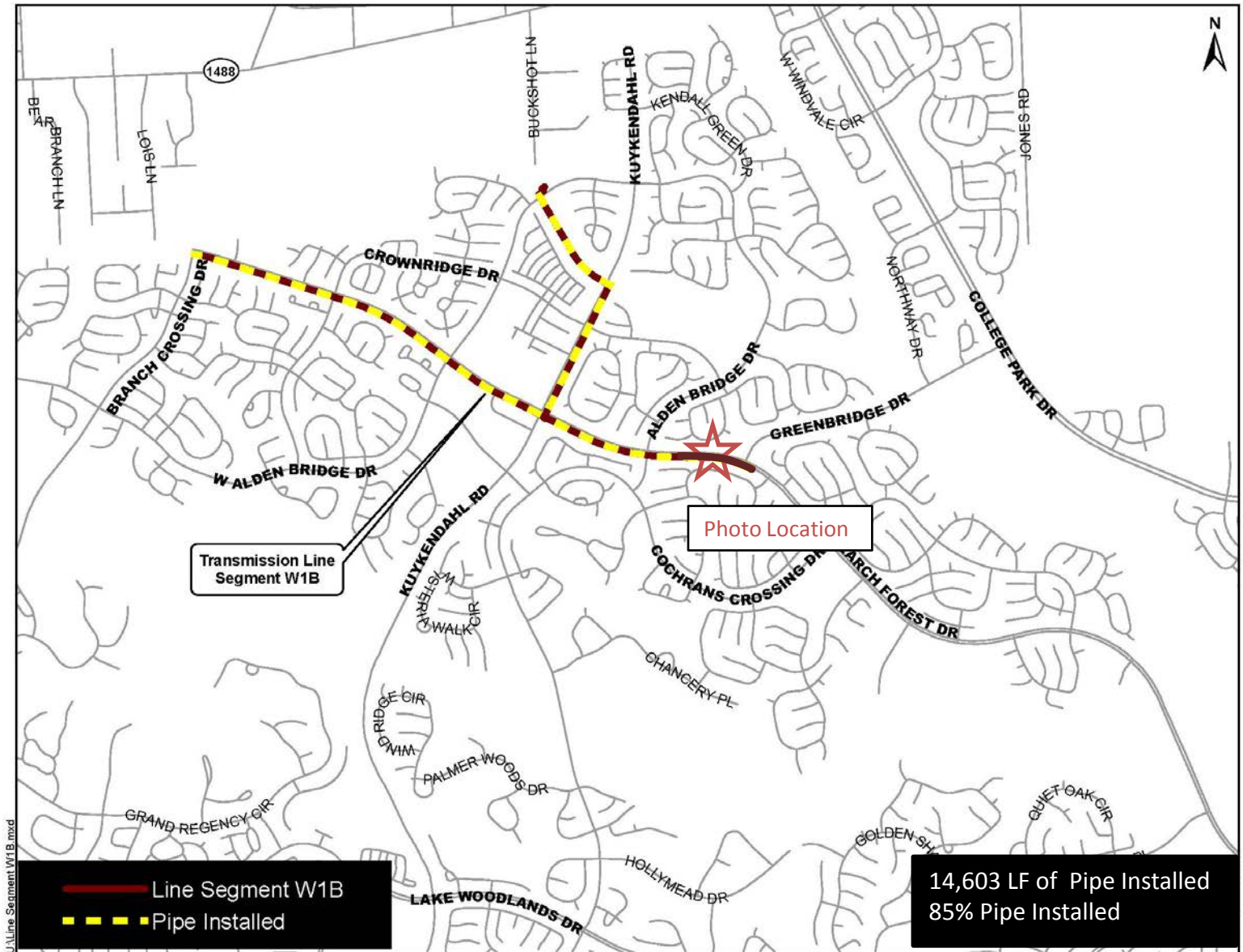
— Line Segment W1A
- - - Pipe Installed

19,840 LF of Pipe Installed
 86% Pipe Installed

U:\Line Segment\W1A.mxd



12-inch water line relocation at the intersection of Branch Crossing and Research Forest



Transmission Line Segment W1B

Photo Location

— Line Segment W1B
- - - Pipe Installed

14,603 LF of Pipe Installed
85% Pipe Installed

U:\Line Segment W1B.mxd



42-inch pipe installation along Research Forest Drive

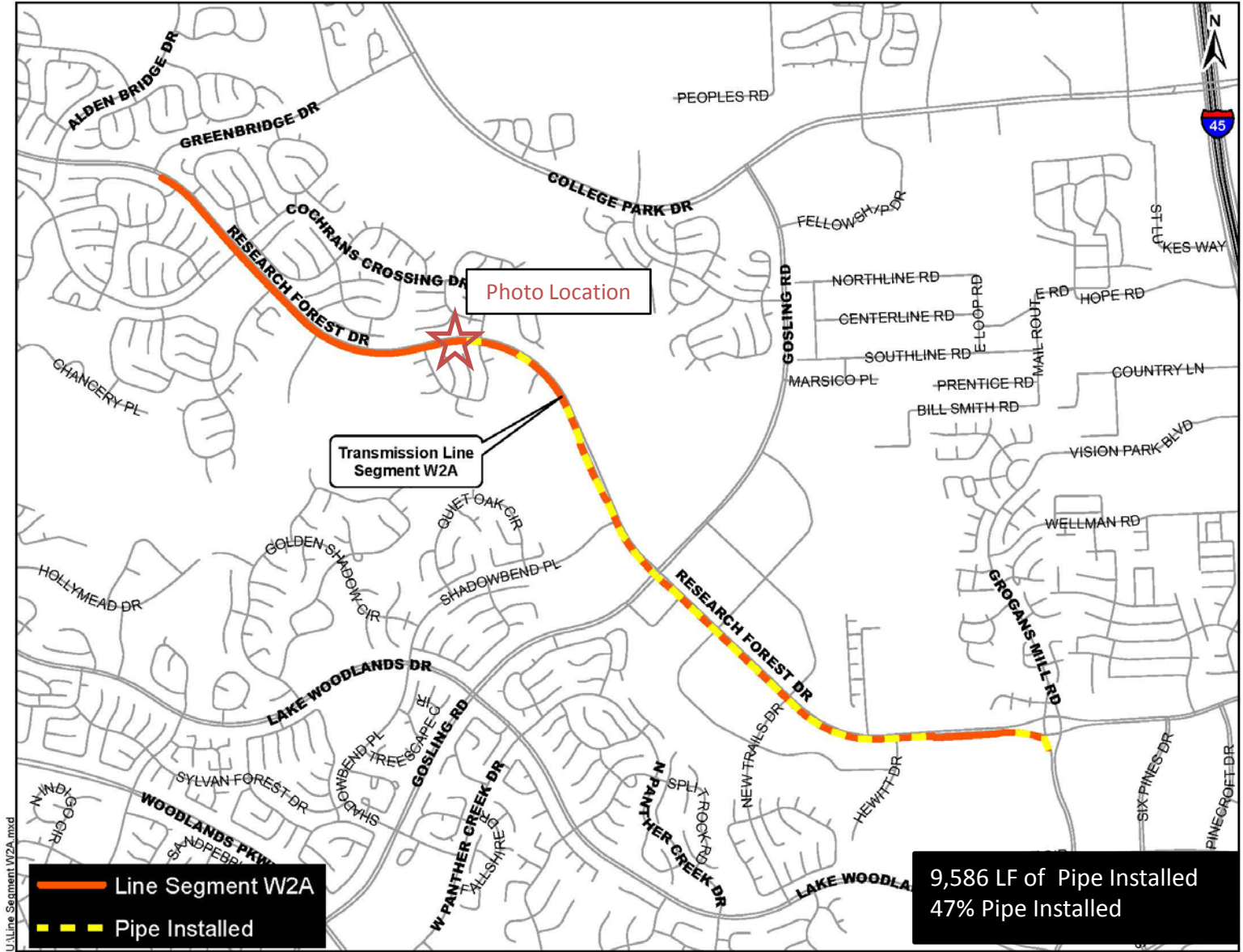


Photo Location

Transmission Line Segment W2A

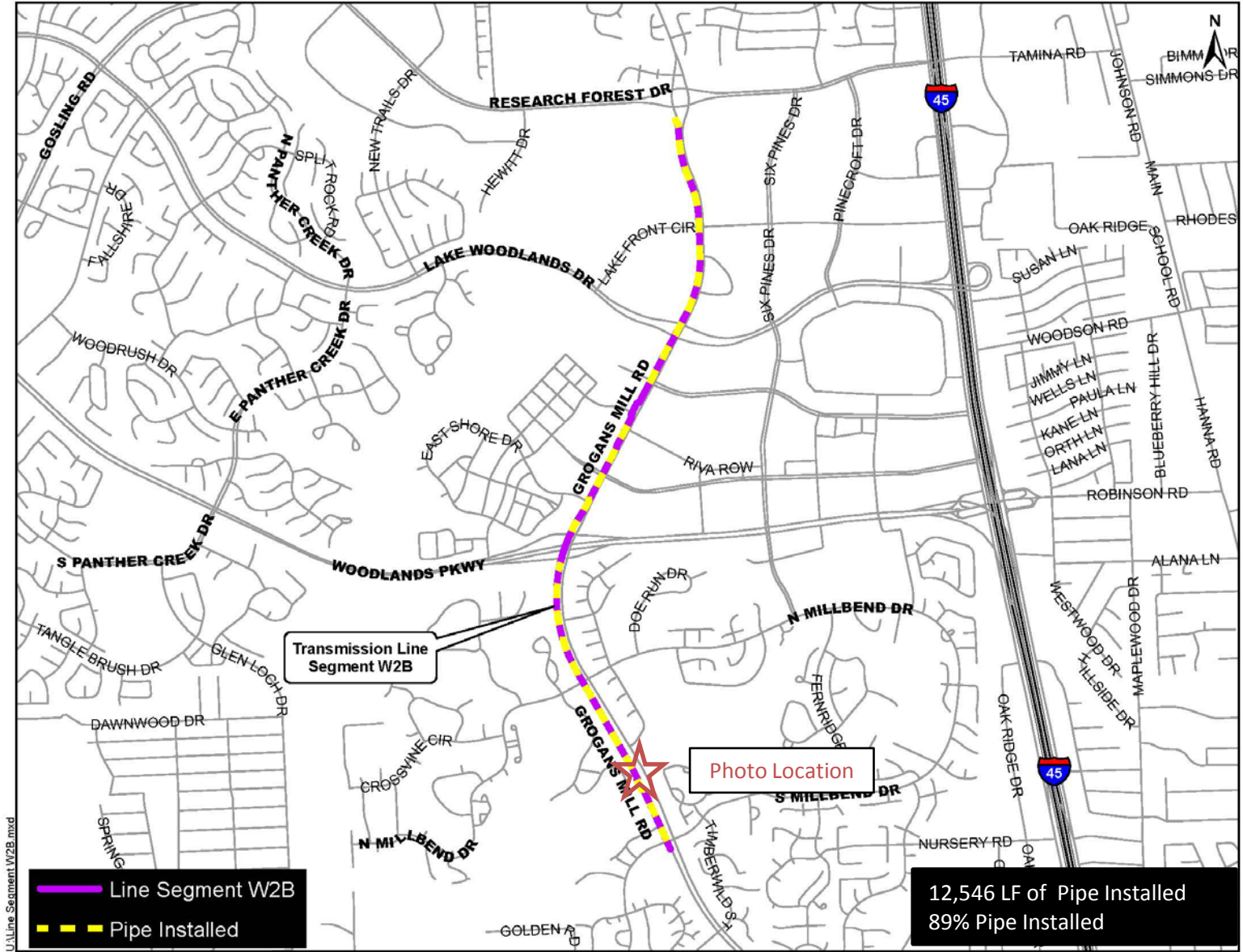
- Line Segment W2A
- Pipe Installed

9,586 LF of Pipe Installed
47% Pipe Installed

U:\Line Segment W2A.mxd



42-inch pipe installation along Research Forest Drive



U:\Line Segment W2B.mxd

- Line Segment W2B
- Pipe Installed

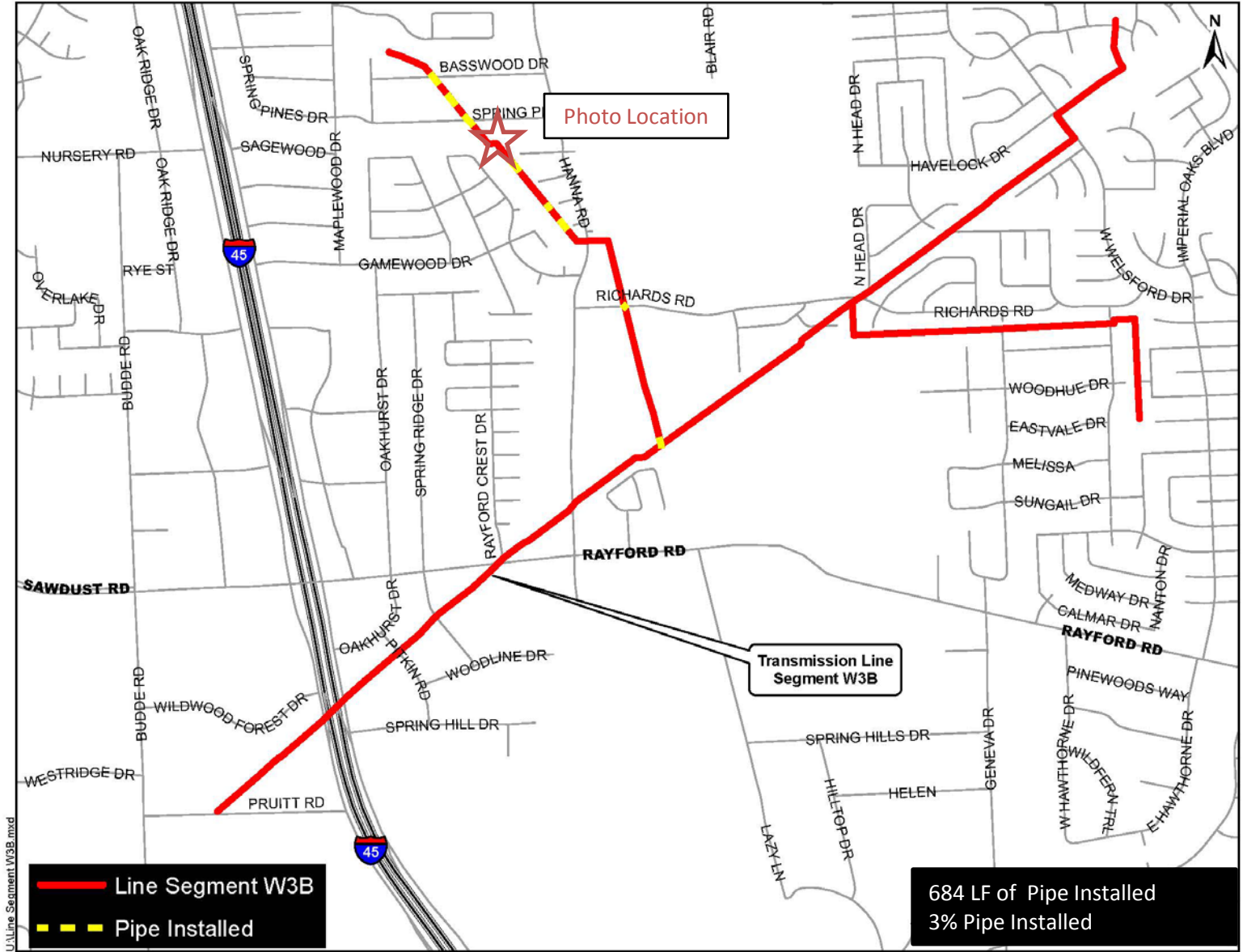
Transmission Line Segment W2B

Photo Location

12,546 LF of Pipe Installed
89% Pipe Installed



30-Inch aerial pipe installation on Grogan's Mill at bridge crossing



U:\Line Segment W3B.mxd

— Line Segment W3B
- - - Pipe Installed

Transmission Line Segment W3B

684 LF of Pipe Installed
3% Pipe Installed



Pipe installation along Montgomery County Drainage District right-of-way

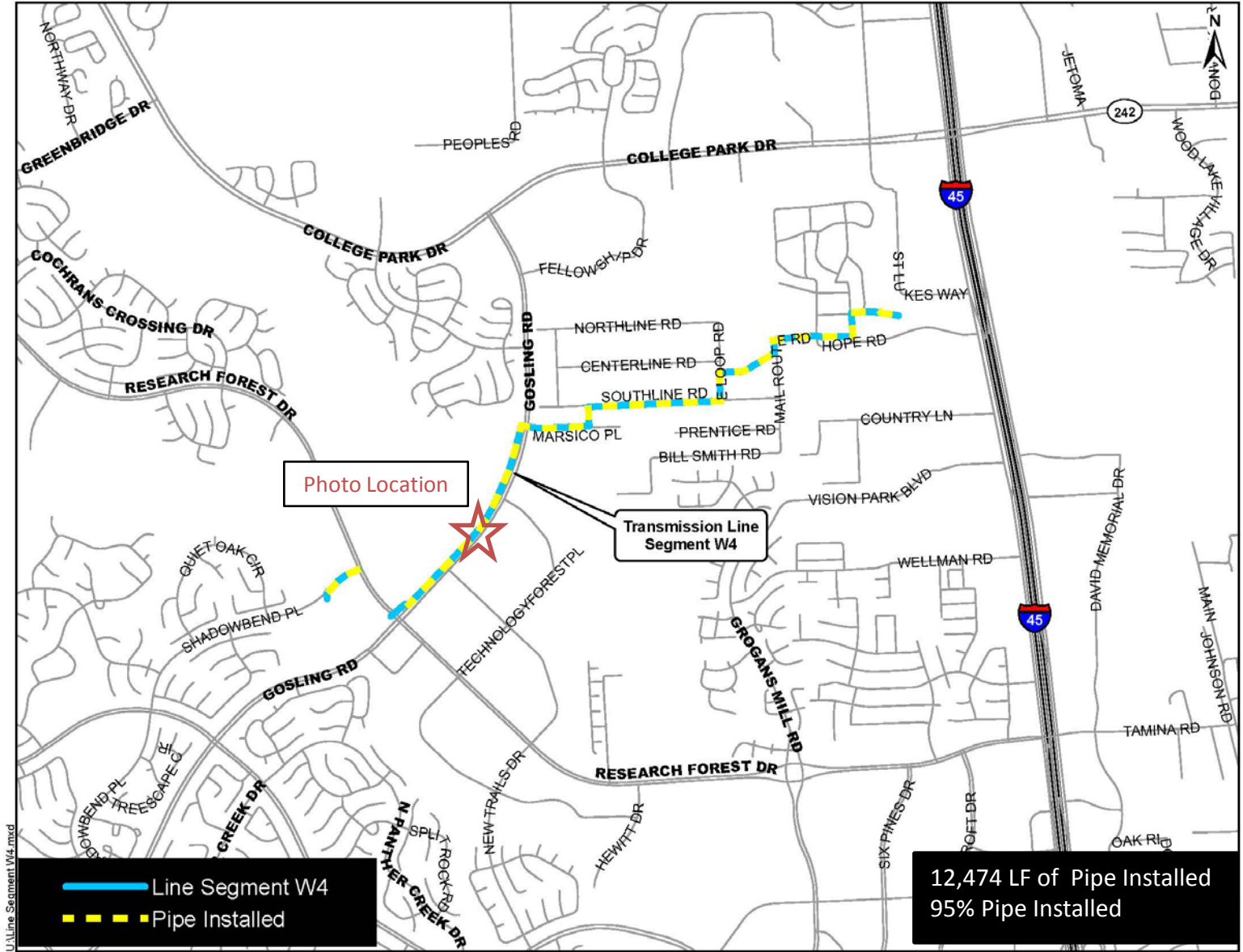


Photo Location

Transmission Line Segment W4

U:\Line Segment W4.mxd

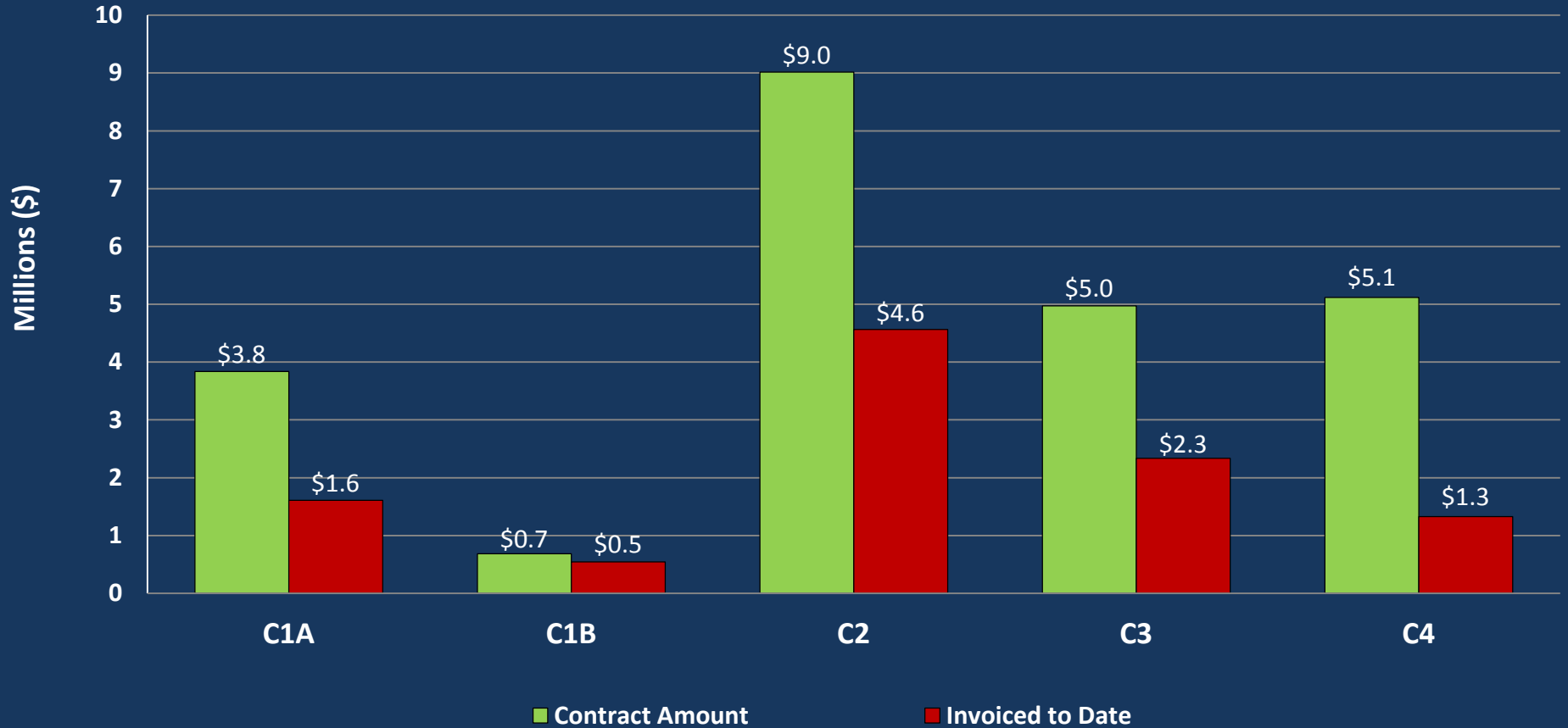
- Line Segment W4
- Pipe Installed

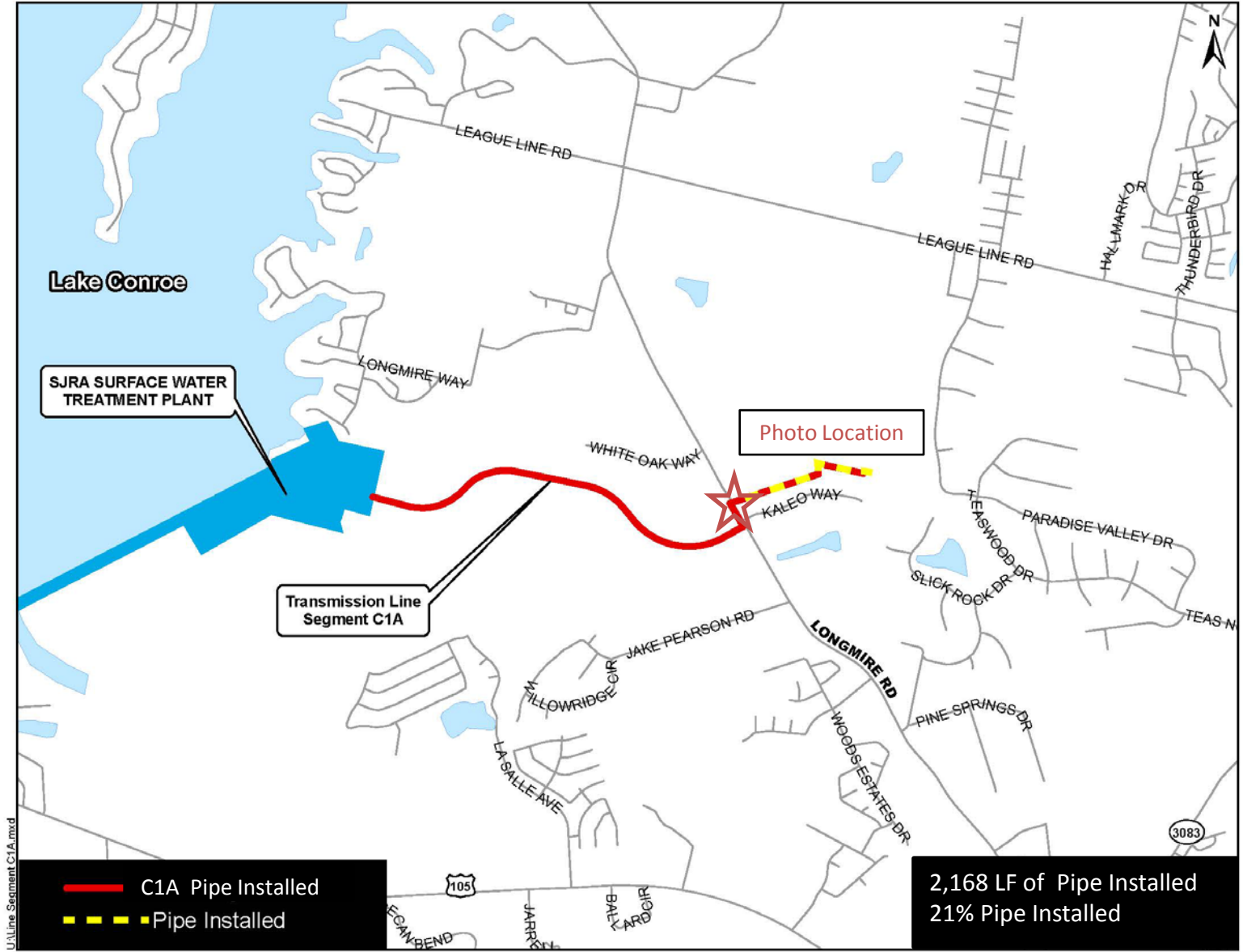
12,474 LF of Pipe Installed
95% Pipe Installed



24-inch pipe and fiber optic conduit installation on Gosling

SURFACE WATER TRANSMISSION SYSTEM "C" ROUTES - PROJECT DATA





SJRA SURFACE WATER TREATMENT PLANT

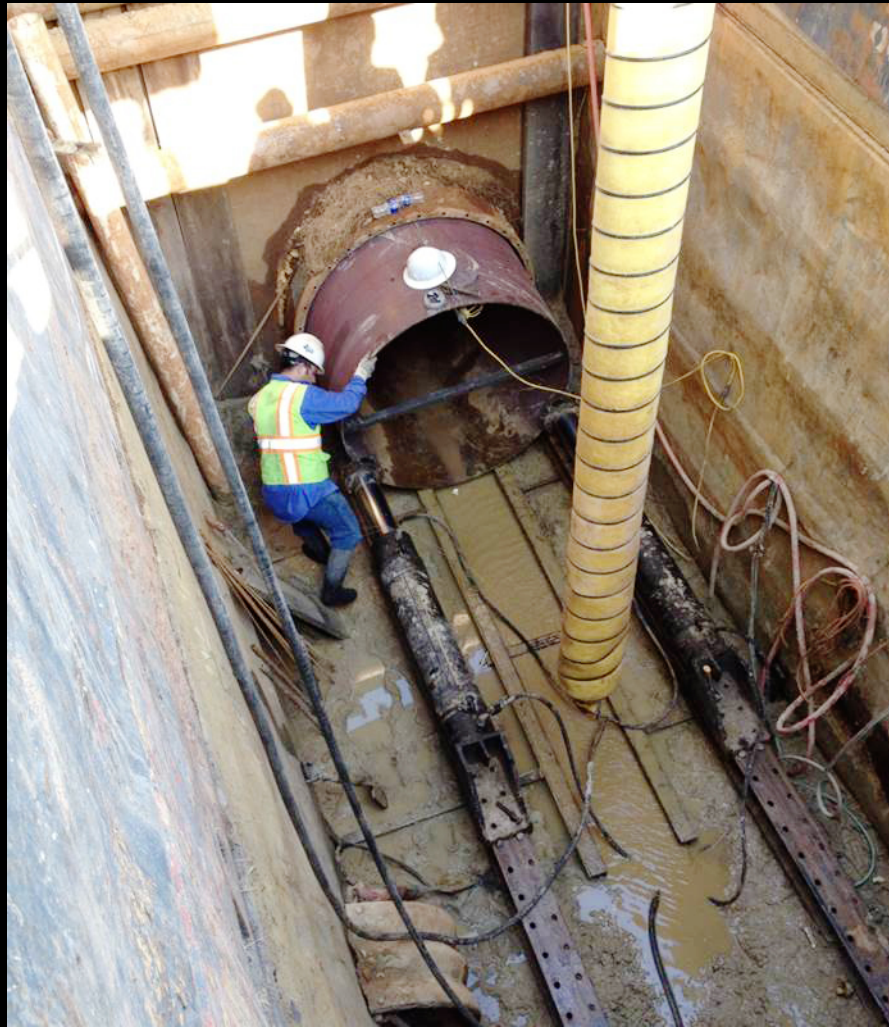
Transmission Line Segment C1A

Photo Location

- C1A Pipe Installed
- - - Pipe Installed

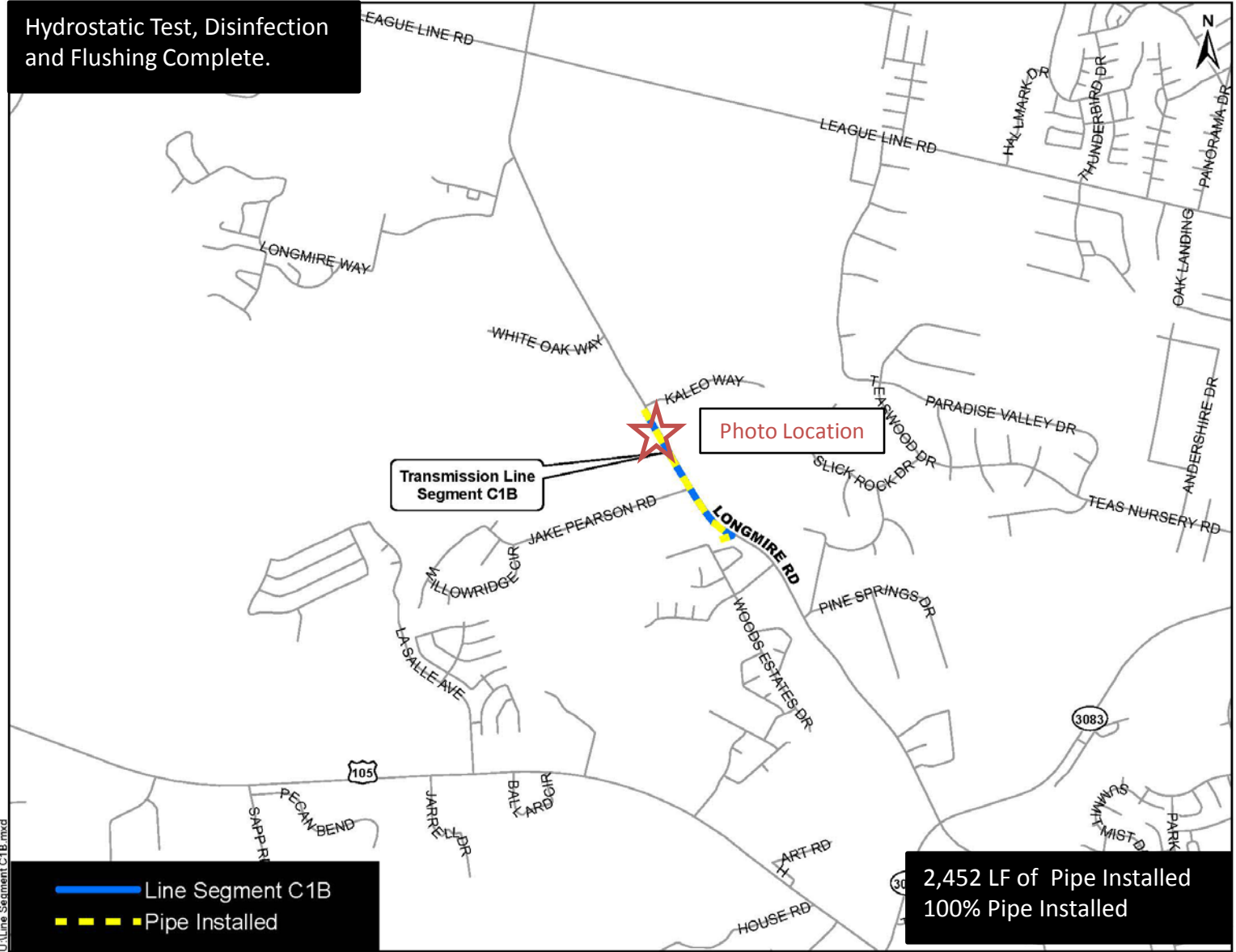
2,168 LF of Pipe Installed
21% Pipe Installed

LVLine Segment C1A.mxd



Tunnel installation at the Longmire Road

Hydrostatic Test, Disinfection and Flushing Complete.



Transmission Line Segment C1B

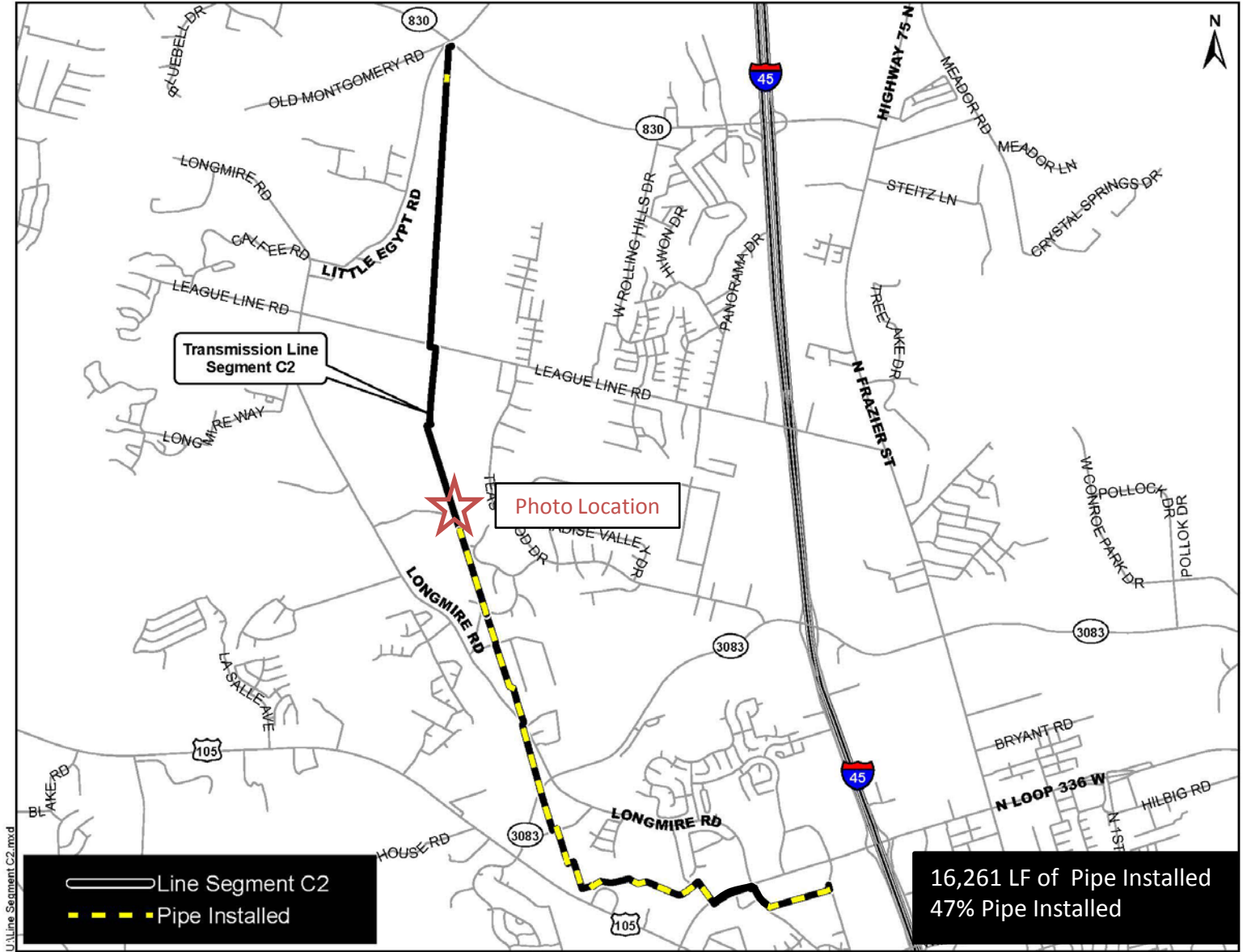
Photo Location

- Line Segment C1B
- Pipe Installed

2,452 LF of Pipe Installed
100% Pipe Installed



Ground box and fiber optic conduit installation



Transmission Line Segment C2

Photo Location

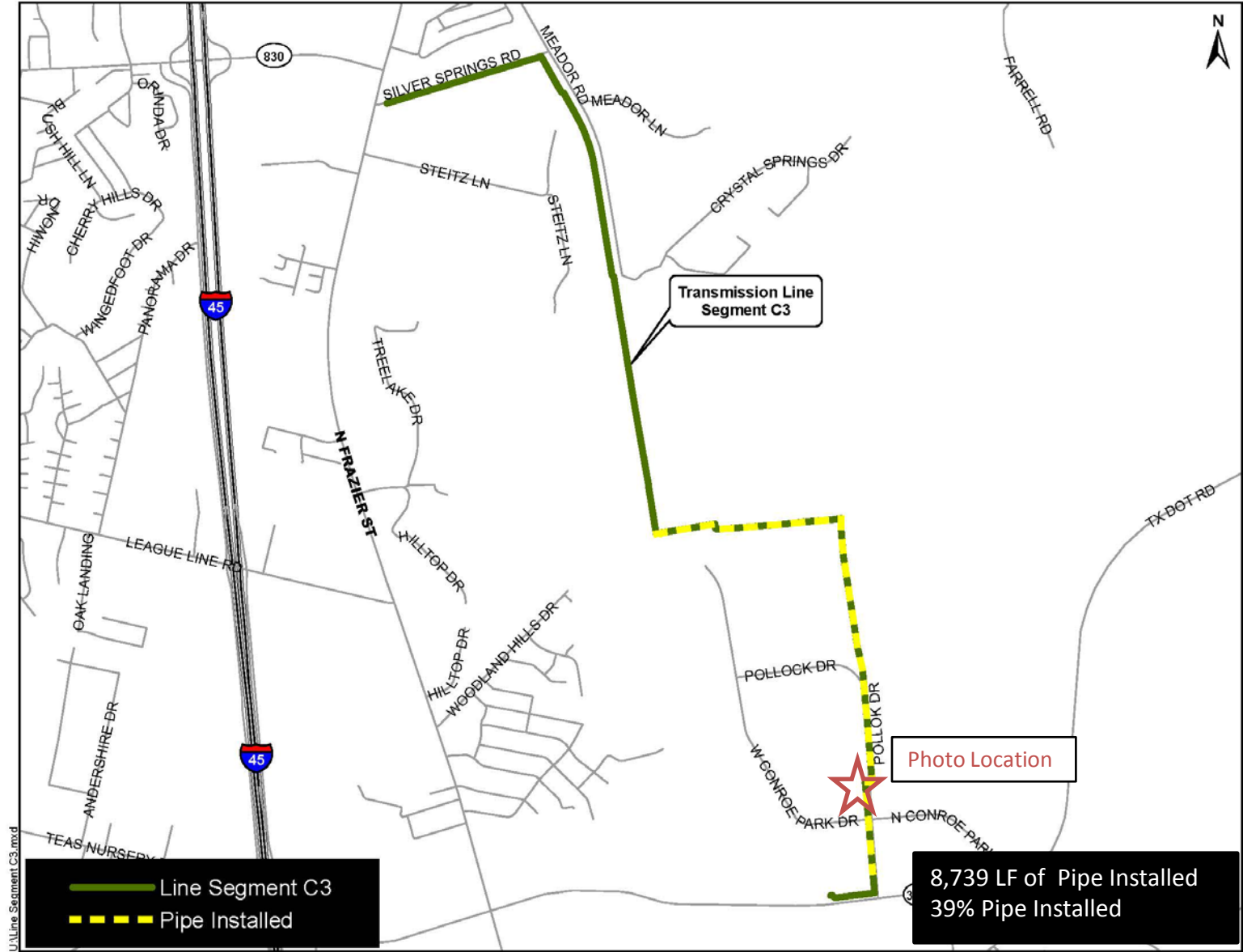
— Line Segment C2
- - - Pipe Installed

16,261 LF of Pipe Installed
47% Pipe Installed

U:\Line Segment C2.mxd



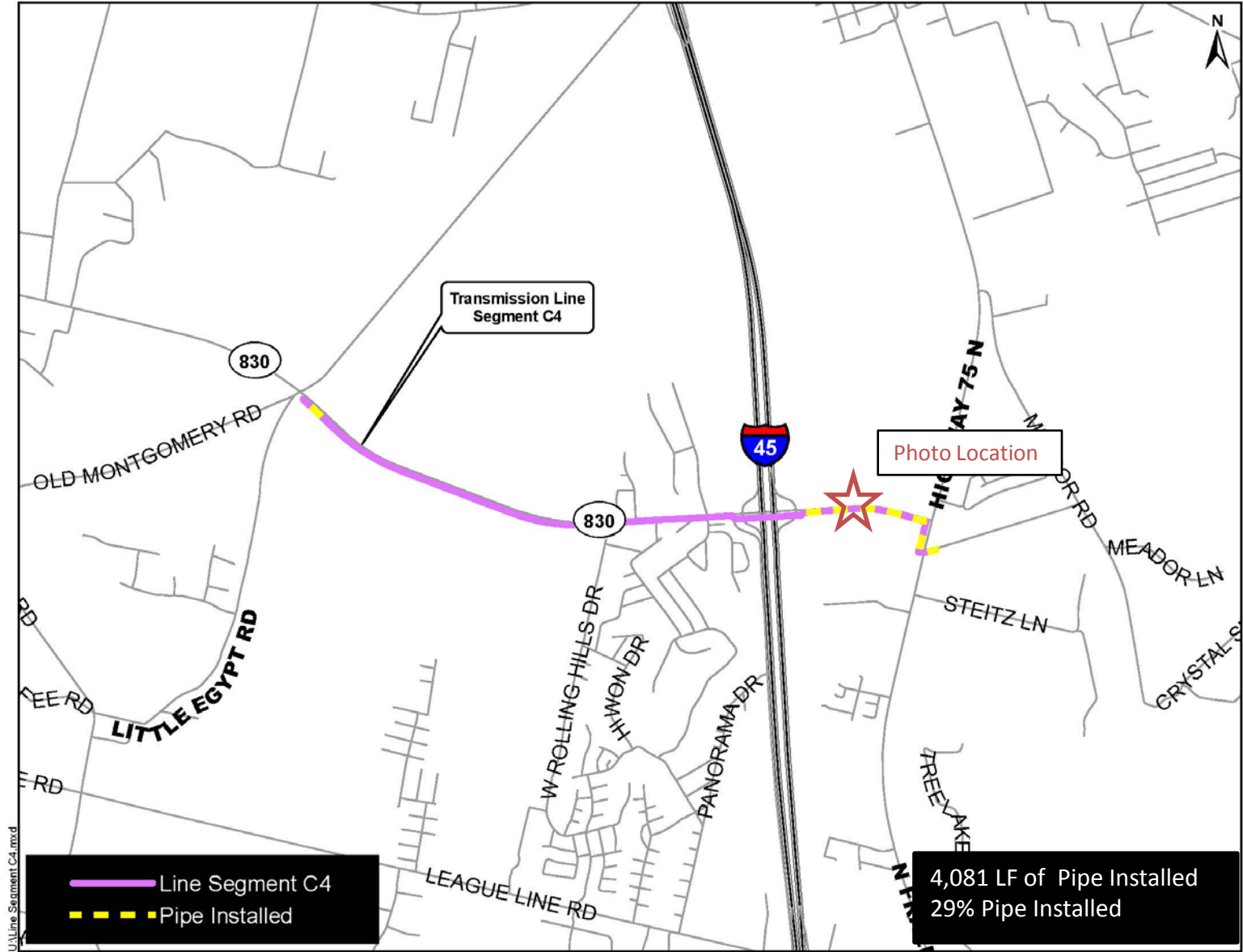
Butterfly valve installation along Entergy easement



U:\Line Segment C3.mxd



Valve access manhole installation along Pollock Road



Transmission Line Segment C4

Photo Location

— Line Segment C4
- - - Pipe Installed

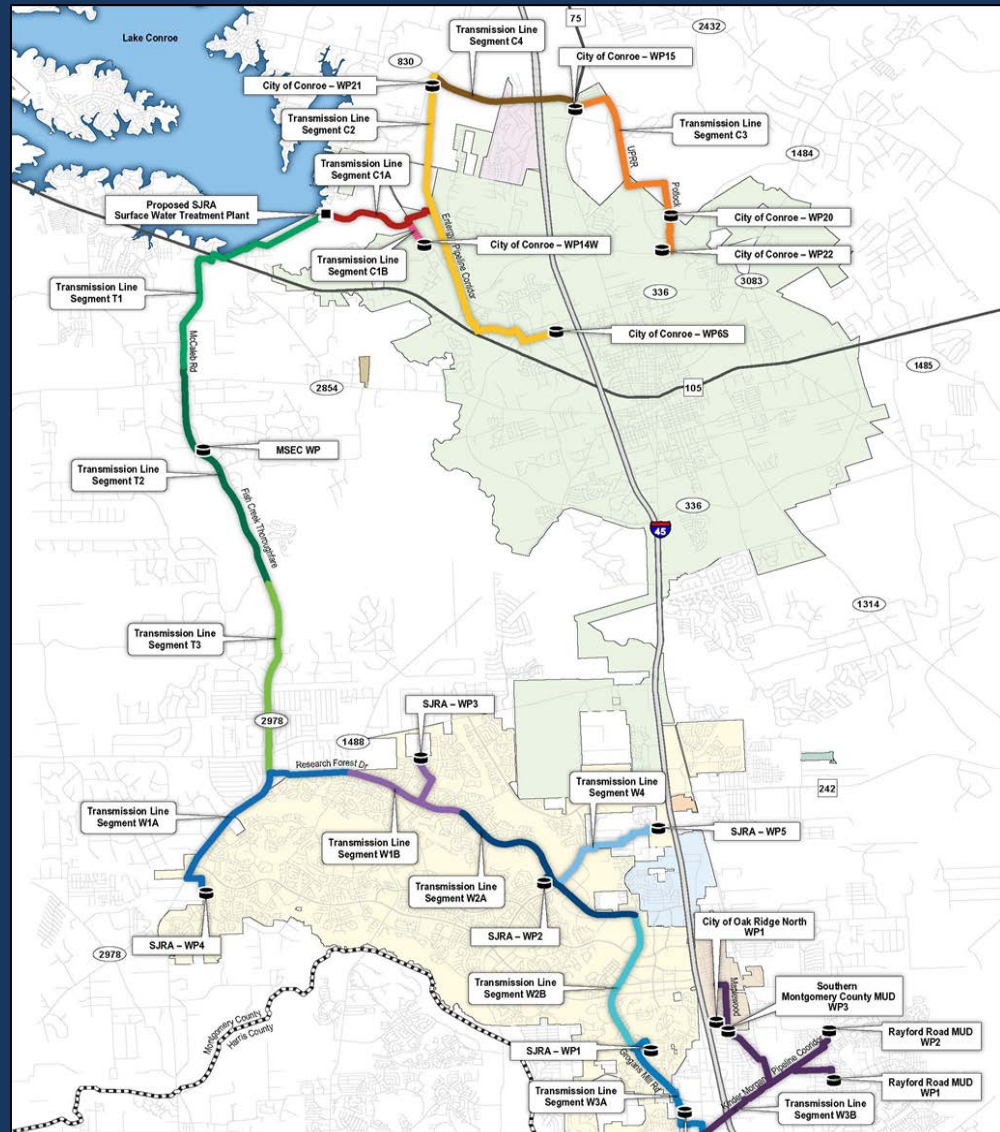
4,081 LF of Pipe Installed
29% Pipe Installed

U:\Line Segment C4.mxd

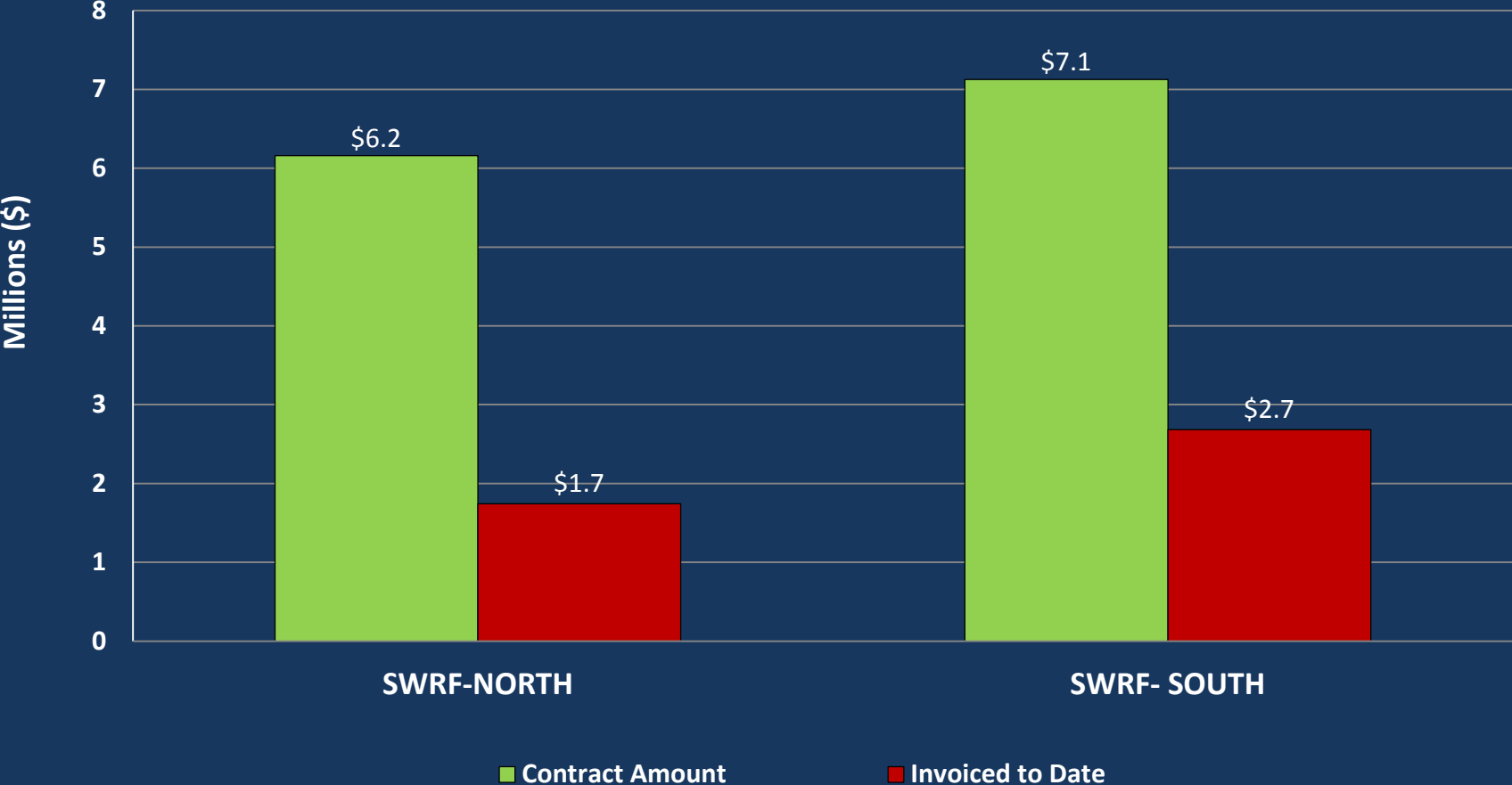


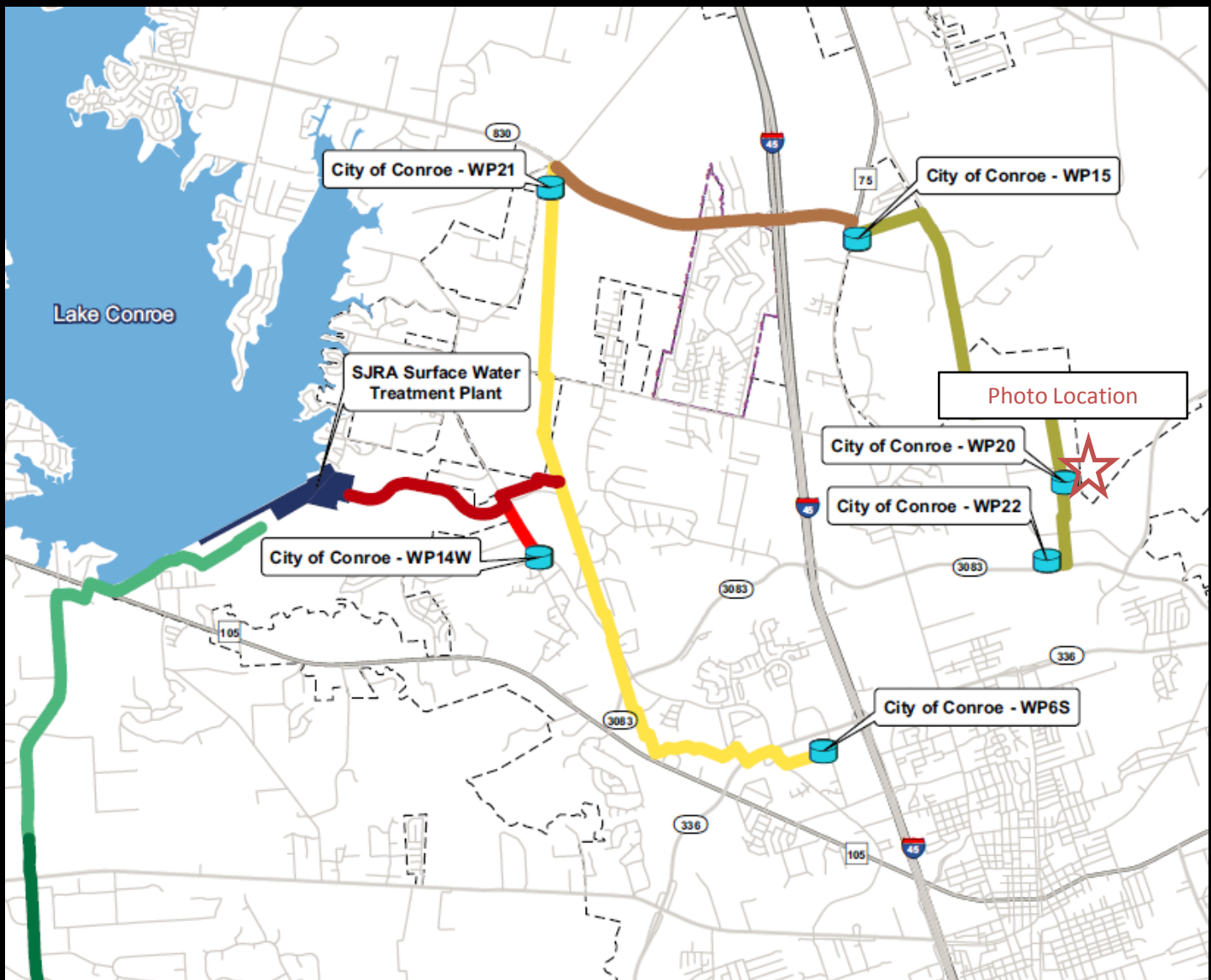
24-inch pipe and restrained joint installation along FM 830

SURFACE WATER RECEIVING FACILITIES CONSTRUCTION PROGRESS



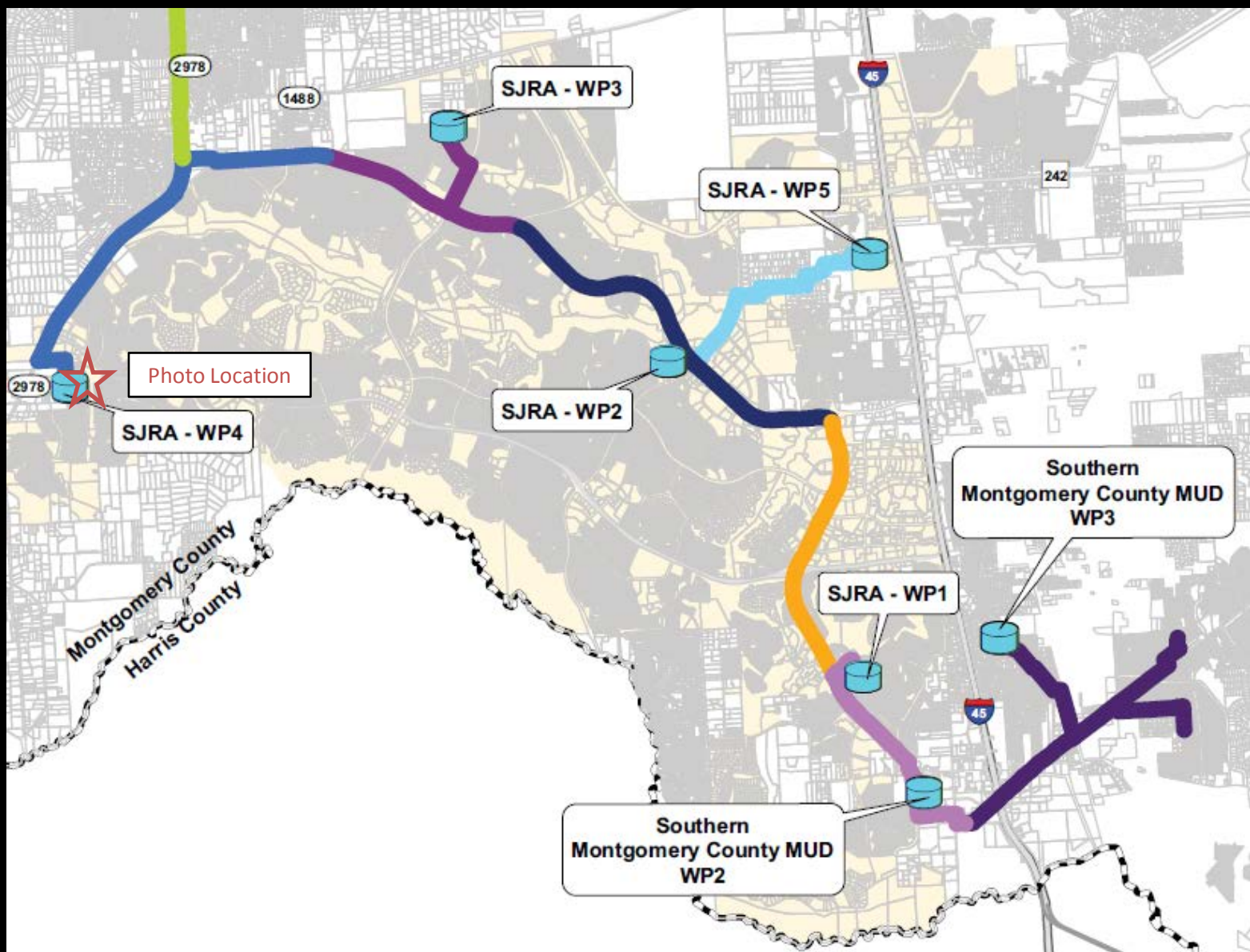
SURFACE WATER TRANSMISSION SYSTEM RECEIVING FACILITIES - PROJECT DATA







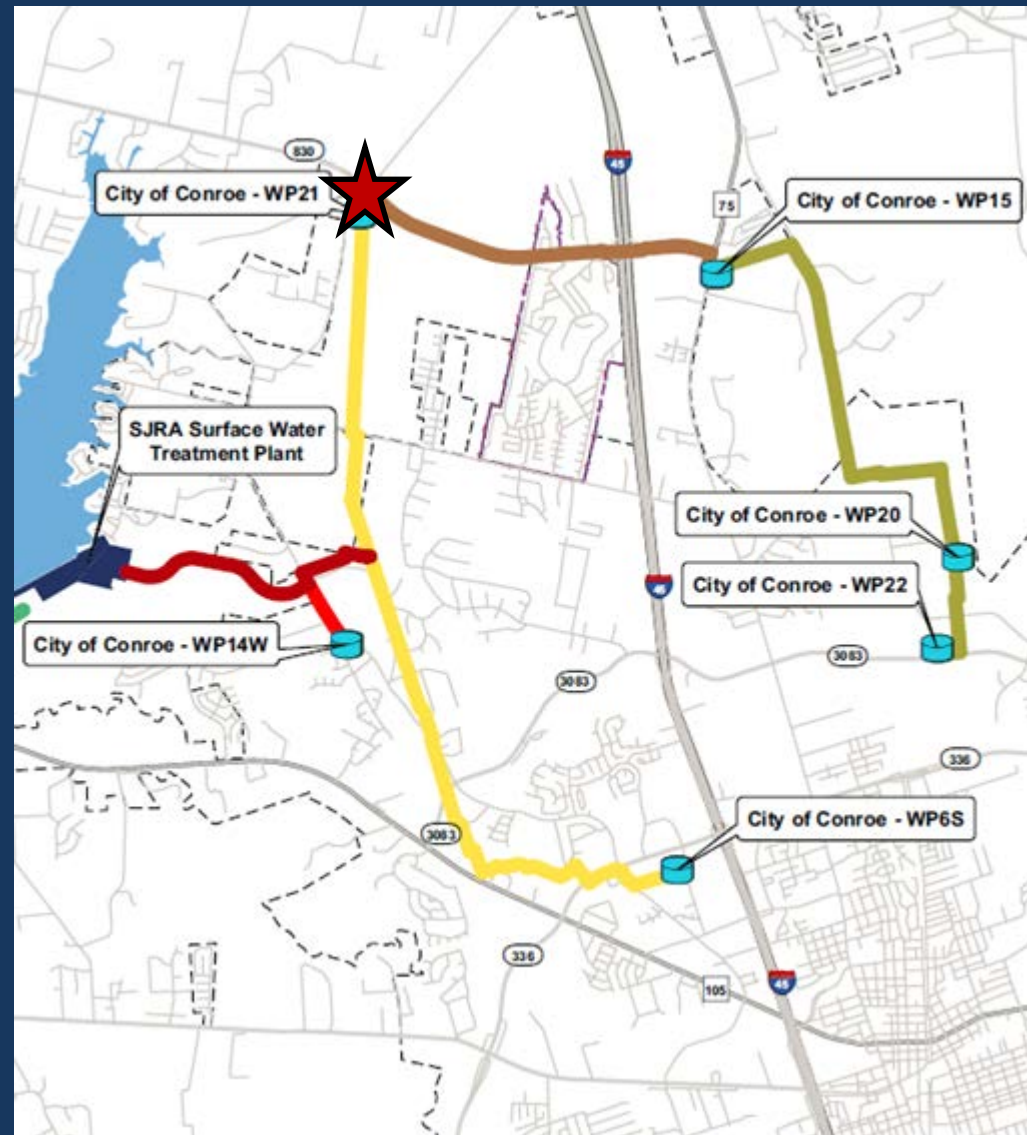
Valve access manhole installation at Conroe Water Plant No. 20



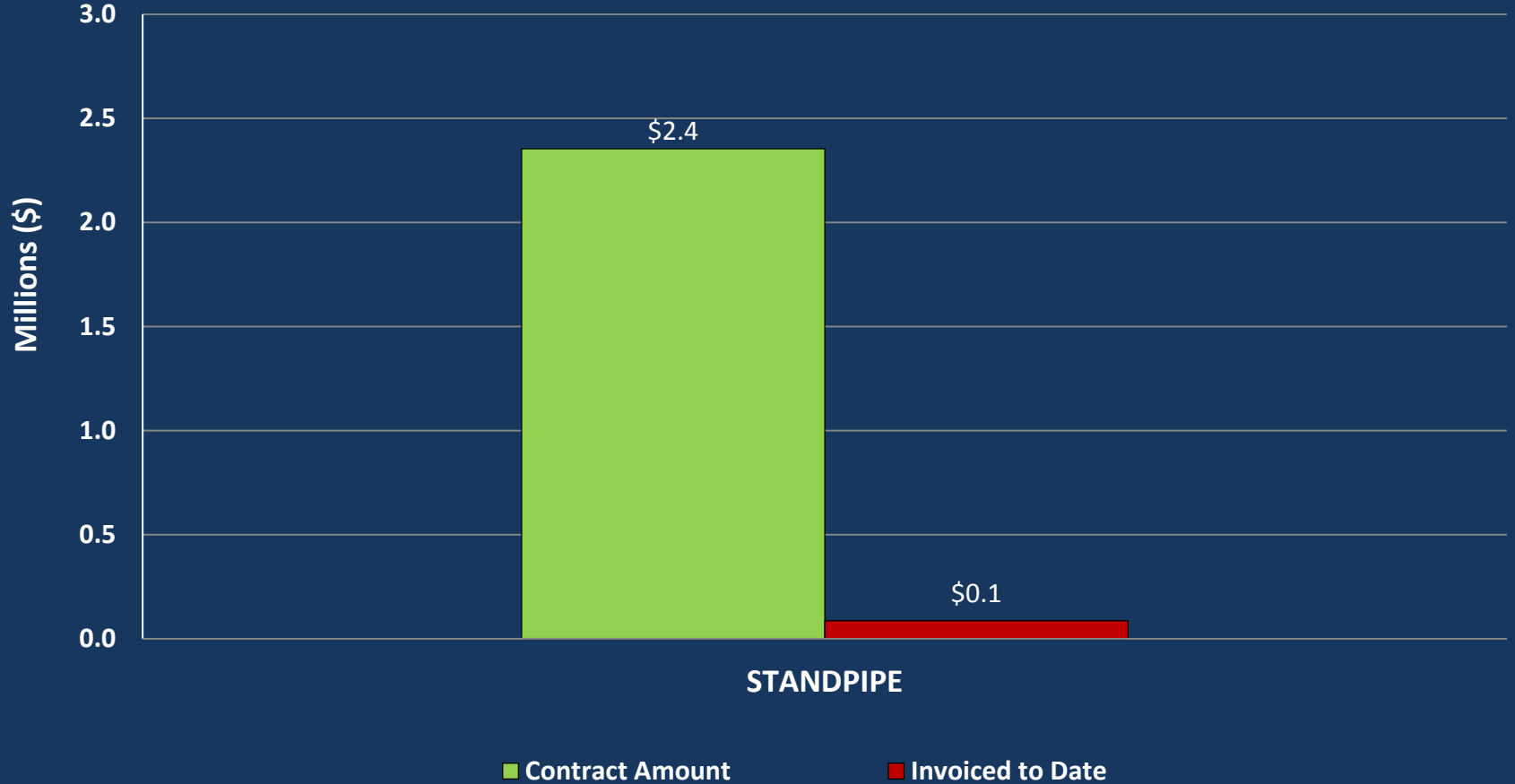


20-inch ground storage tank connection at SJRA Water Plant No. 4

SURFACE WATER STANDPIPE CONSTRUCTION PROGRESS



SURFACE WATER TRANSMISSION SYSTEM STANDPIPE - PROJECT DATA



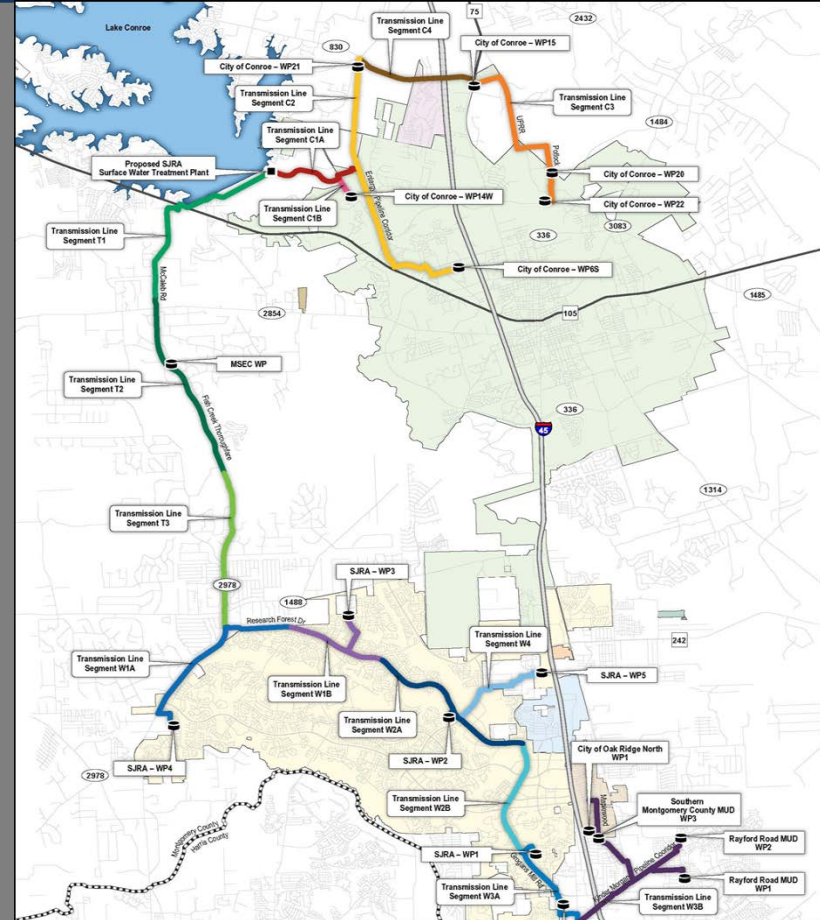


Equipment mobilization and delivery of construction materials

FIBER OPTIC COMMUNICATION CONSTRUCTION ADMINISTRATION

Project Data Thru 4/30/2014

Contracted Amount:	\$	2,885,432.35
Change Orders:	\$	0.00
Estimate to Complete:	\$	2,885,432.35
Amount Invoiced:	\$	0.00
Percent Complete:		0%
Completion Date:		June 2015



SURFACE WATER TRANSMISSION SYSTEM CONSTRUCTION PROGRESS

QUESTIONS?

