

# GRP PROGRAM CONSTRUCTION PROGRESS



**GRP Review  
Committee  
Meeting  
September 22, 2014**



**SJRA Board  
of Directors  
Meeting  
September 25, 2014**

# SURFACE WATER FACILITY CONSTRUCTION ADMINISTRATION

## Project Data Thru 8/30/2014

Contracted Amount:	\$190,704,740.00
Change Orders:	\$ 0.00
Estimate to Complete:	\$190,704,740.00
Amount Invoiced:	\$138,723,598.00
Percent Complete:	73%
Completion Date:	June 2015



**Raw Water Intake  
and Pump Station**





Raw Water Intake & Pump Station – Pressure reducing valve assemblies



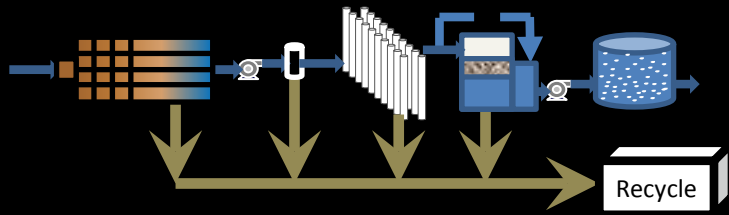
**GAC  
Contactors**

**Membrane  
Building**

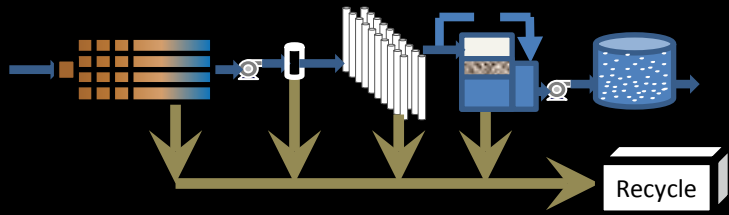
**Pretreatment  
Facilities**

**Chemical  
Facilities**

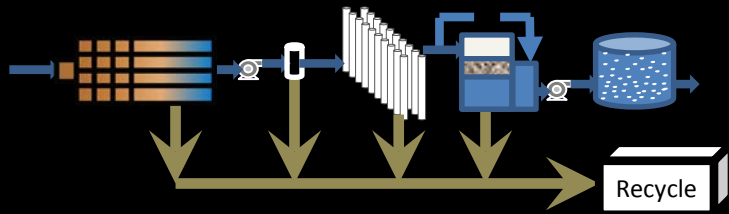
**Water Treatment Process Structures**



Pretreatment – Leak testing procedure



Membrane Building – Supply header and strainer installation



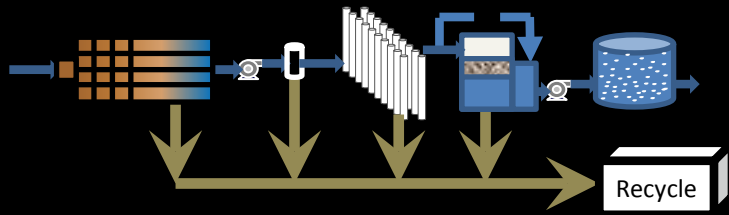
Granulated Activated Carbon Building – Process water piping installation





**High Service Pump Station,  
GST's, and Blower Building**

**Finished Water Process Structures**



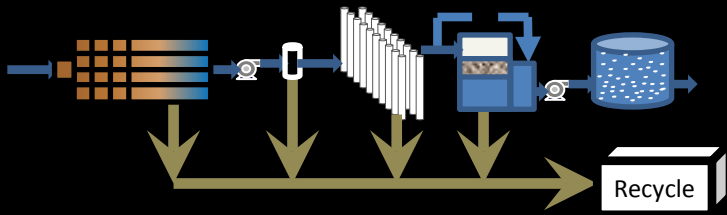
High Service Pump Station – Electrical gear installation



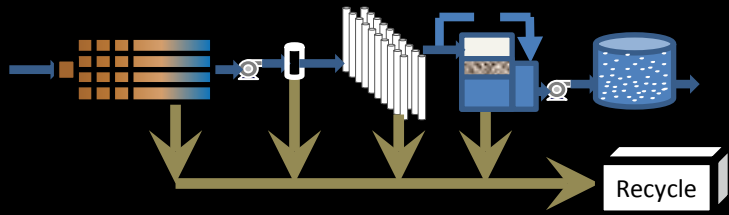
**Solids-Waste Process Structures**

**Backwash  
Equalization Basin**

**Process Residual Treatment and Disposal Structures**



Dewatering Building – Belt filter press installation



Sludge Thickeners – Installation of mechanical equipment

**Electrical  
Facilities**

**Operations  
Building**

**Operational Structures**



Electrical Building – Paralleling switch gear installation

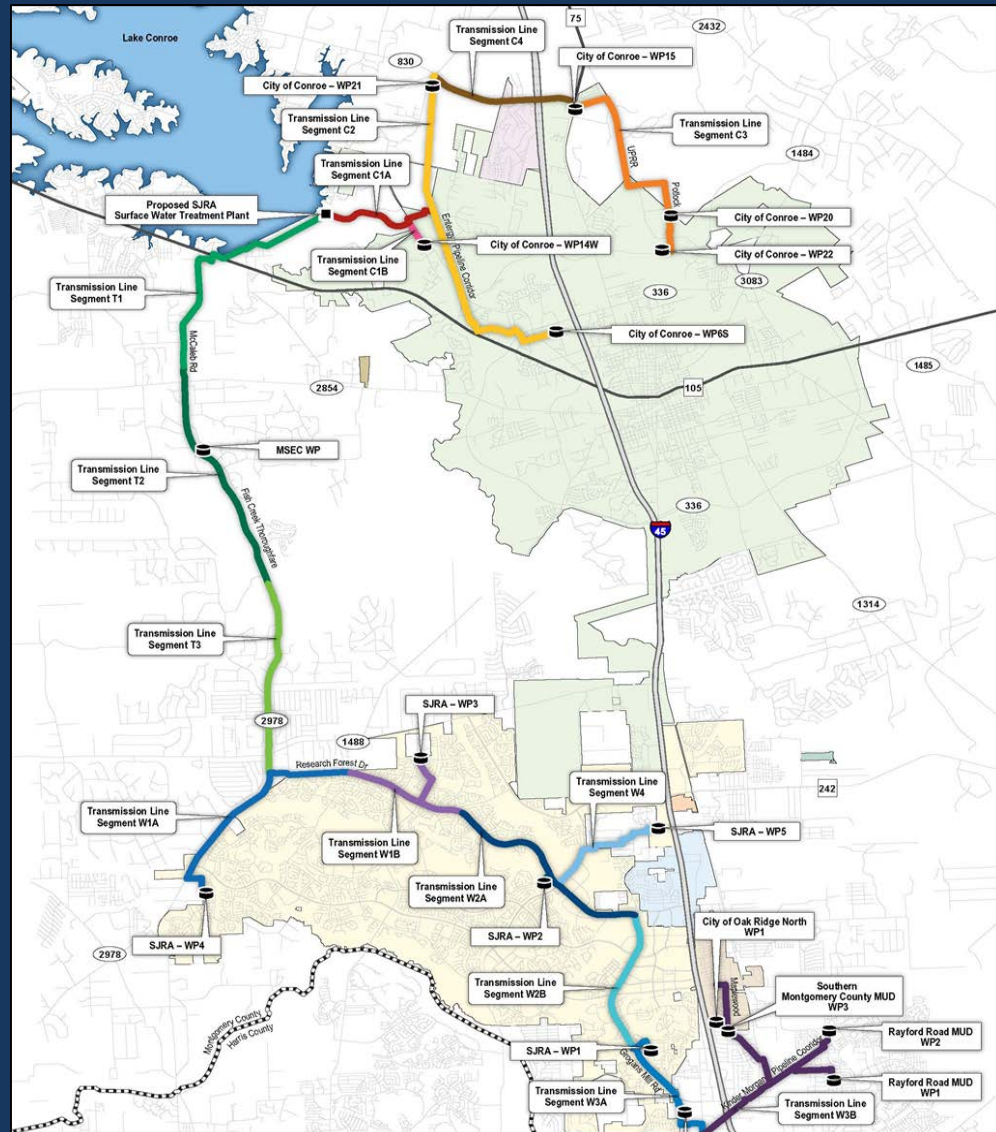
# SURFACE WATER FACILITY CONSTRUCTION PROGRESS

## Questions?





# SURFACE WATER TRANSMISSION SYSTEM CONSTRUCTION PROGRESS



# TRANSMISSION LINE SYSTEM CONSTRUCTION ADMINISTRATION

## Project Data Thru 8/30/2014

Original Contract Amount: \$ 146,610,000.60

Change Orders: \$ 2,391,349.69

Total Contract Amount: \$ 149,001,350.29

Amount Invoiced: \$113,393,162.85

Percent Complete: 76%

Estimated Completion Date: May 2015



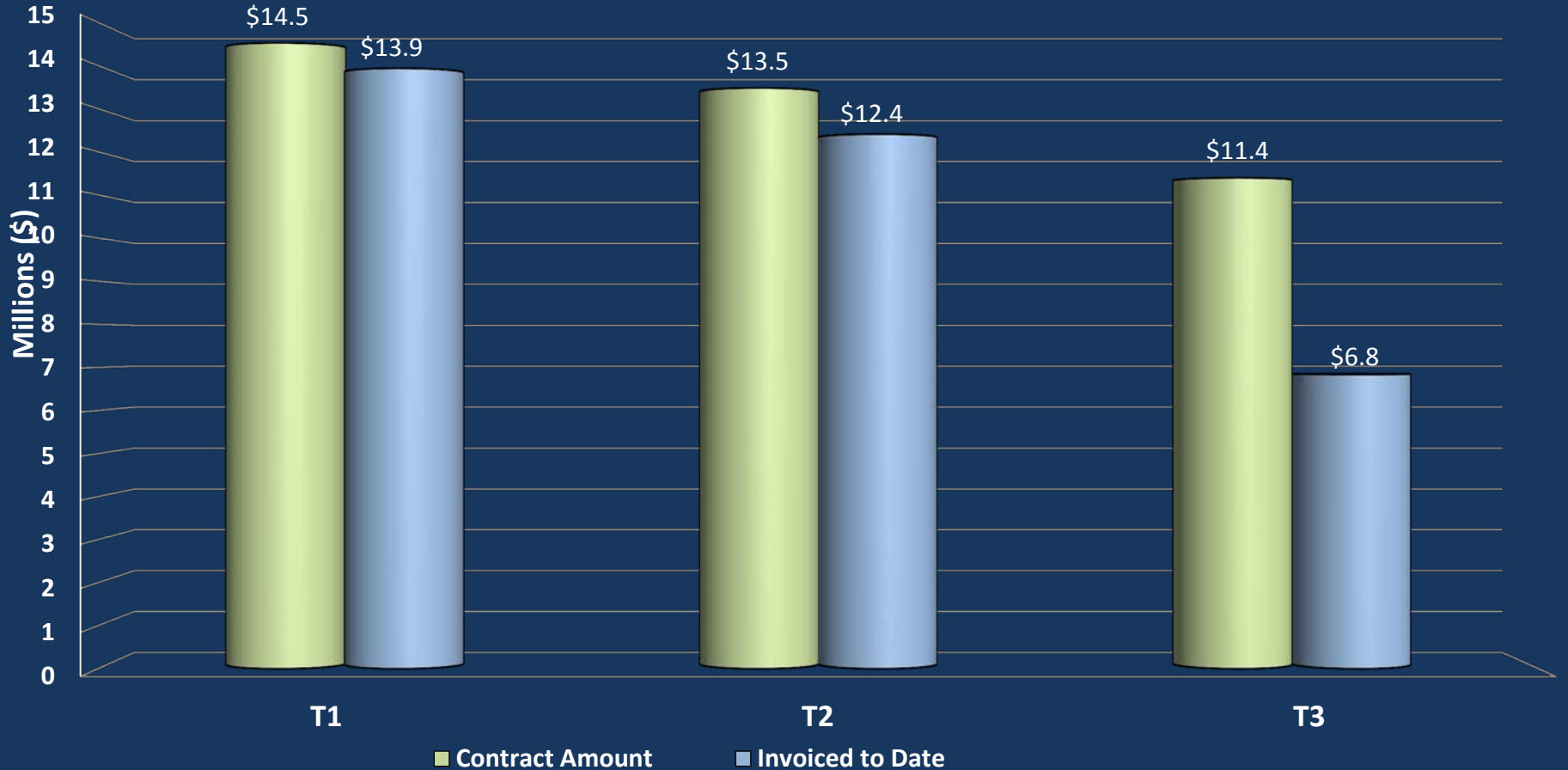
# TRANSMISSION LINE SYSTEM CONSTRUCTION ADMINISTRATION

## Project Data Thru 8/30/2014

Average Daily workforce:	282 workers
Piping installed to date:	41.6 miles
Average cost per day:	\$248,477
Percentage of pipe installed:	81%

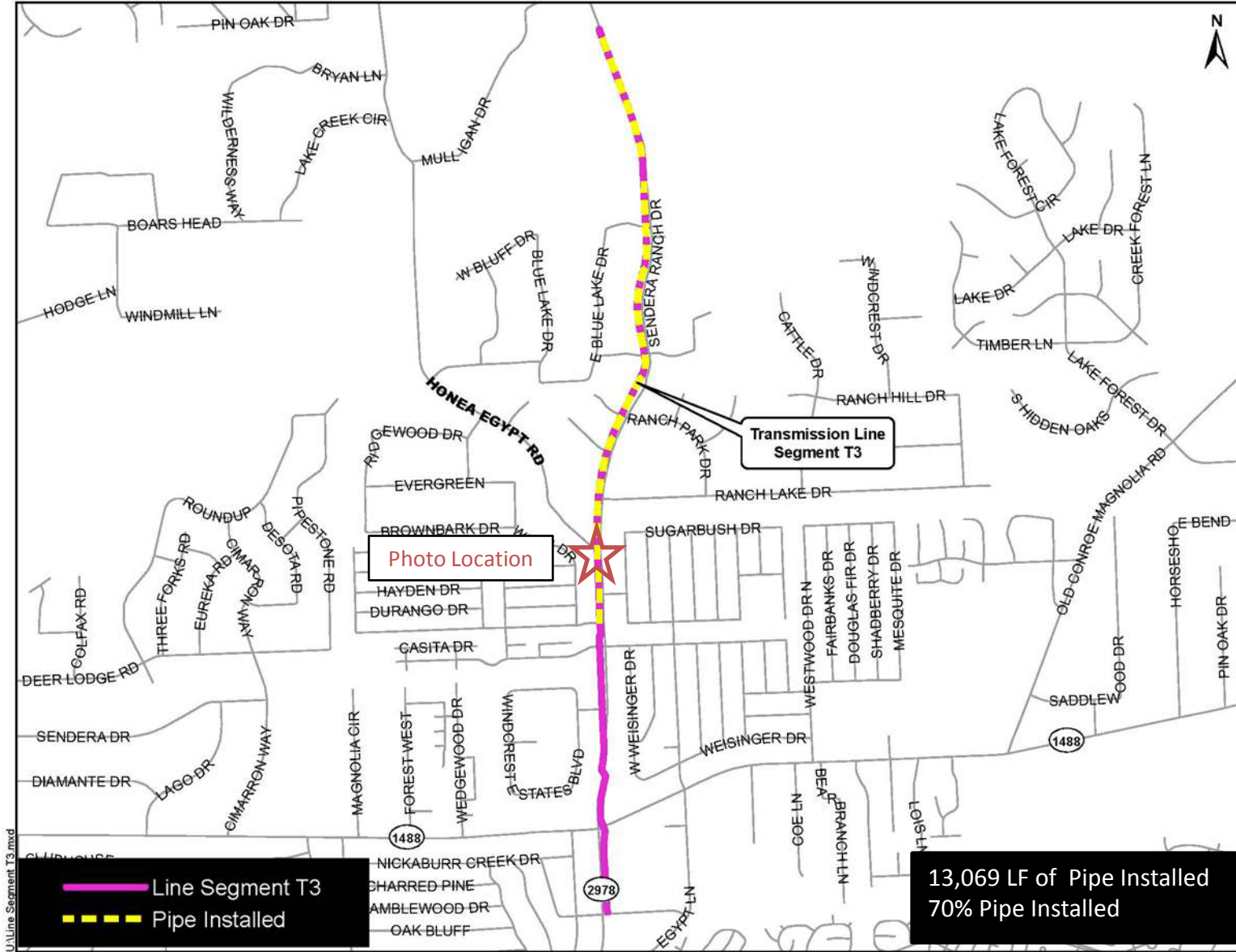


# SURFACE WATER TRANSMISSION SYSTEM "T" ROUTES - PROJECT DATA



# SURFACE WATER TRANSMISSION SYSTEM "T" ROUTES - PROJECT STATUS

Line	Overall % Complete	Testing % Complete	Substantial Completion	Final Completion
T1	96%	57%		
T2	92%	29%		
T3	60%			



Transmission Line Segment T3

Photo Location

— Line Segment T3  
- - - Pipe Installed

13,069 LF of Pipe Installed  
70% Pipe Installed

J:\Line Segment T3.mxd



54-inch pipe installation along Sendera Ranch Road

# SURFACE WATER TRANSMISSION SYSTEM "W" ROUTES - PROJECT DATA





# SURFACE WATER TRANSMISSION SYSTEM "W" ROUTES - PROJECT STATUS

Line	Overall % Complete	Testing % Complete	Substantial Completion	Final Completion
W1A	88%			
W1B	91%	76%		
W2A	81%			
W2B	89%			
W3A	52%			
W3B	47%			
W4	87%			

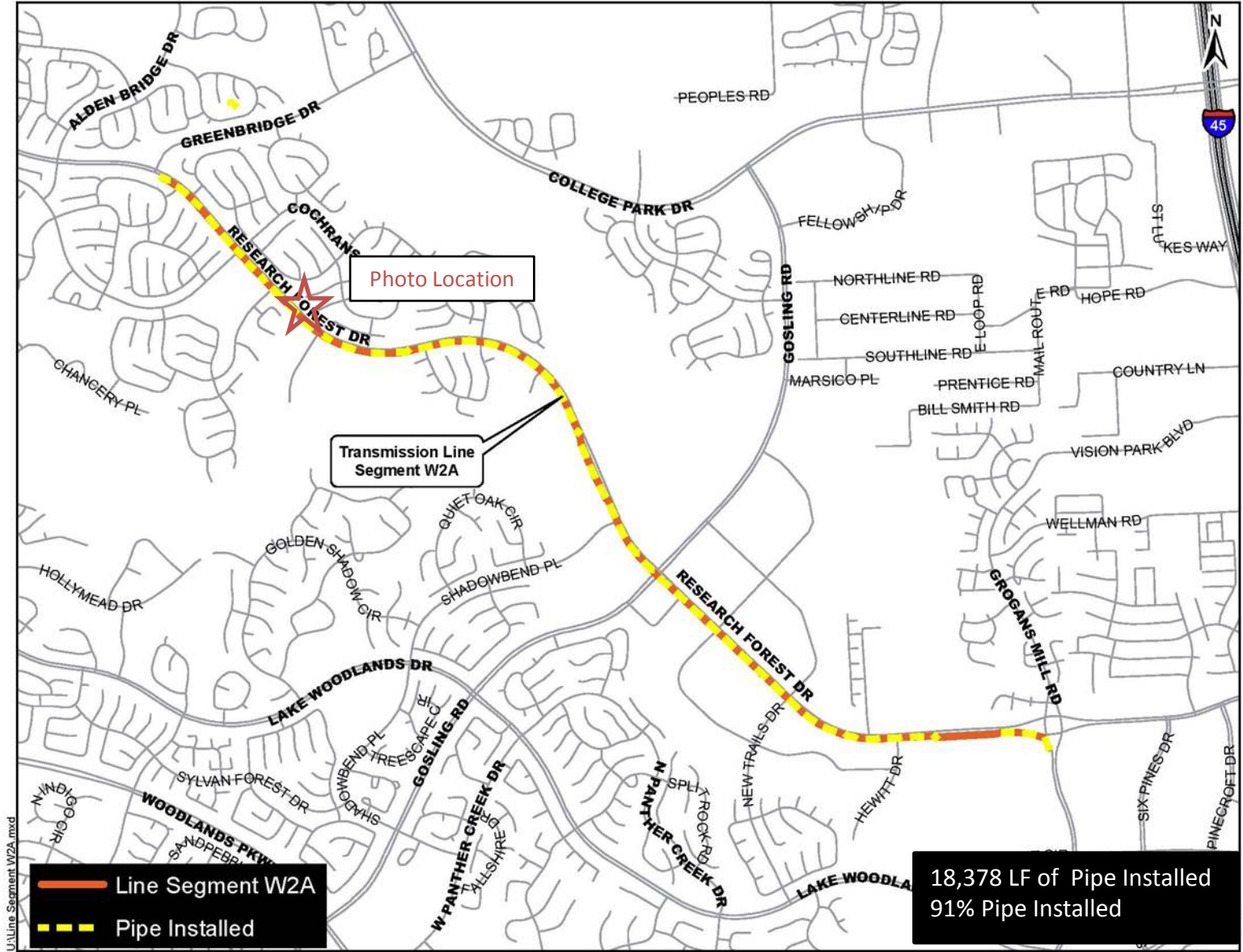


Photo Location

Transmission Line Segment W2A

- Line Segment W2A
- Pipe Installed

18,378 LF of Pipe Installed  
91% Pipe Installed

U:\Line Segment W2A.mxd



Pavement restoration along Research Forest

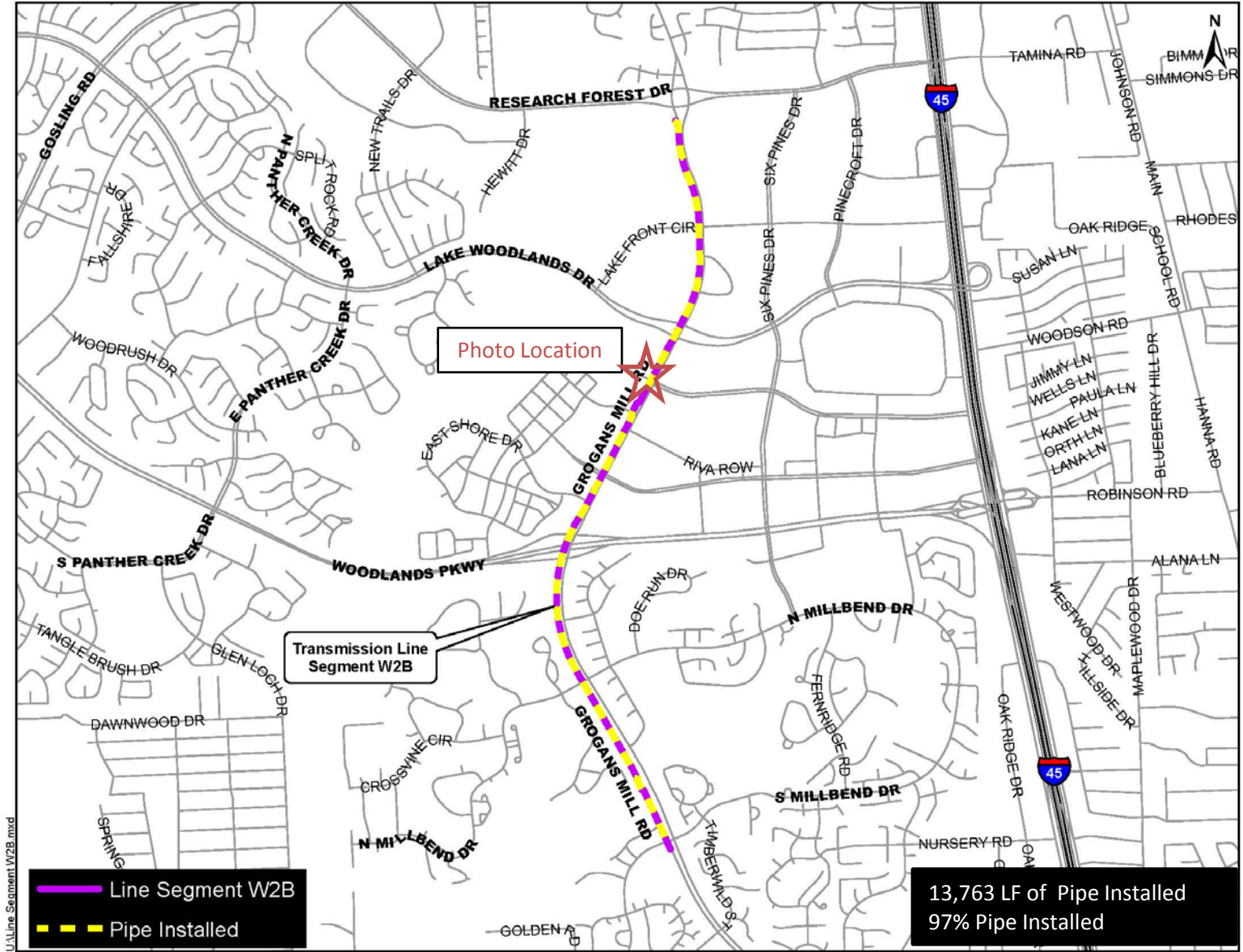


Photo Location

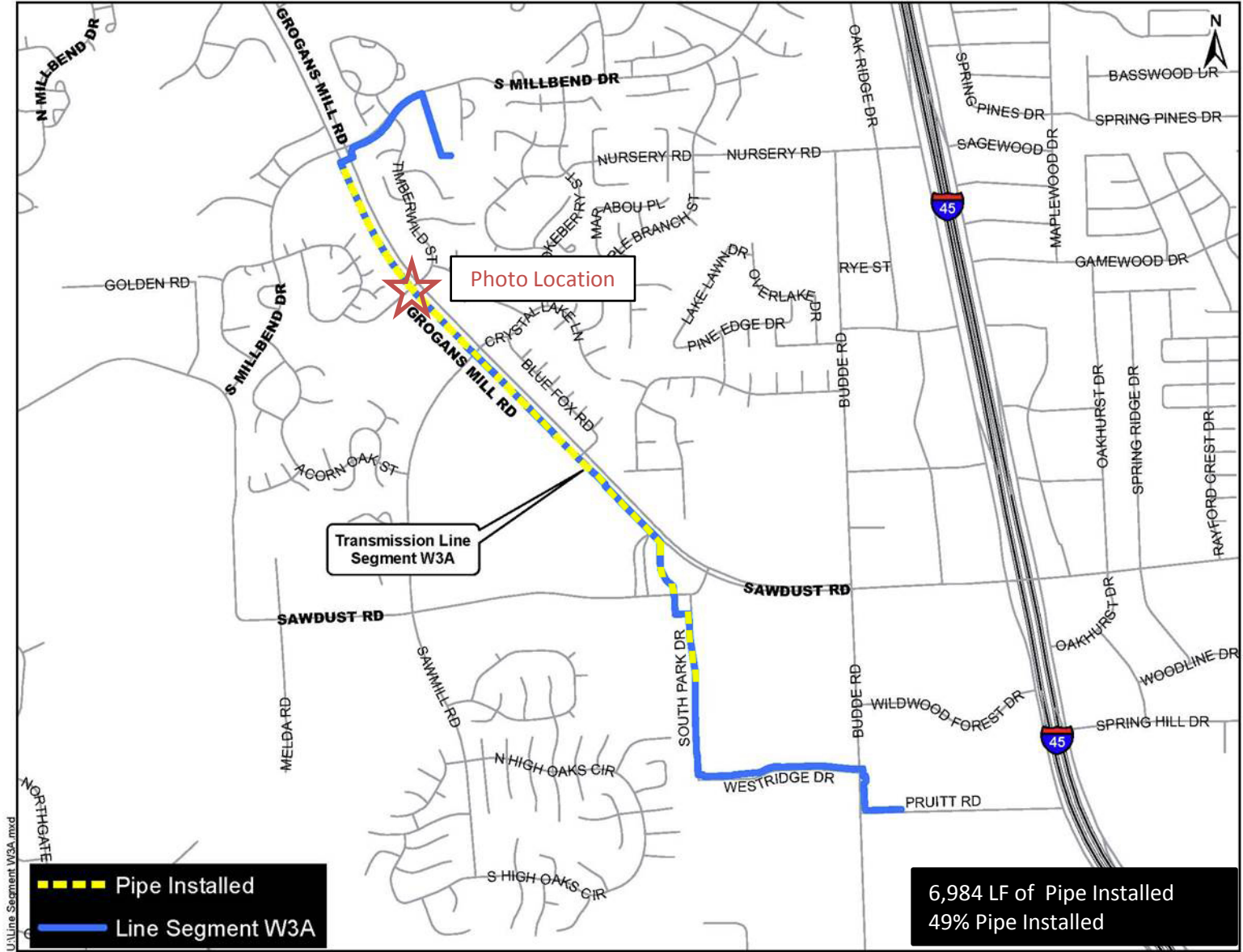
Transmission Line Segment W2B

- Line Segment W2B
- Pipe Installed

13,763 LF of Pipe Installed  
97% Pipe Installed



Backfilling of bore pit for Woodlands Waterway crossing



U:\Line Segment W3A.mxd

- Pipe Installed
- Line Segment W3A

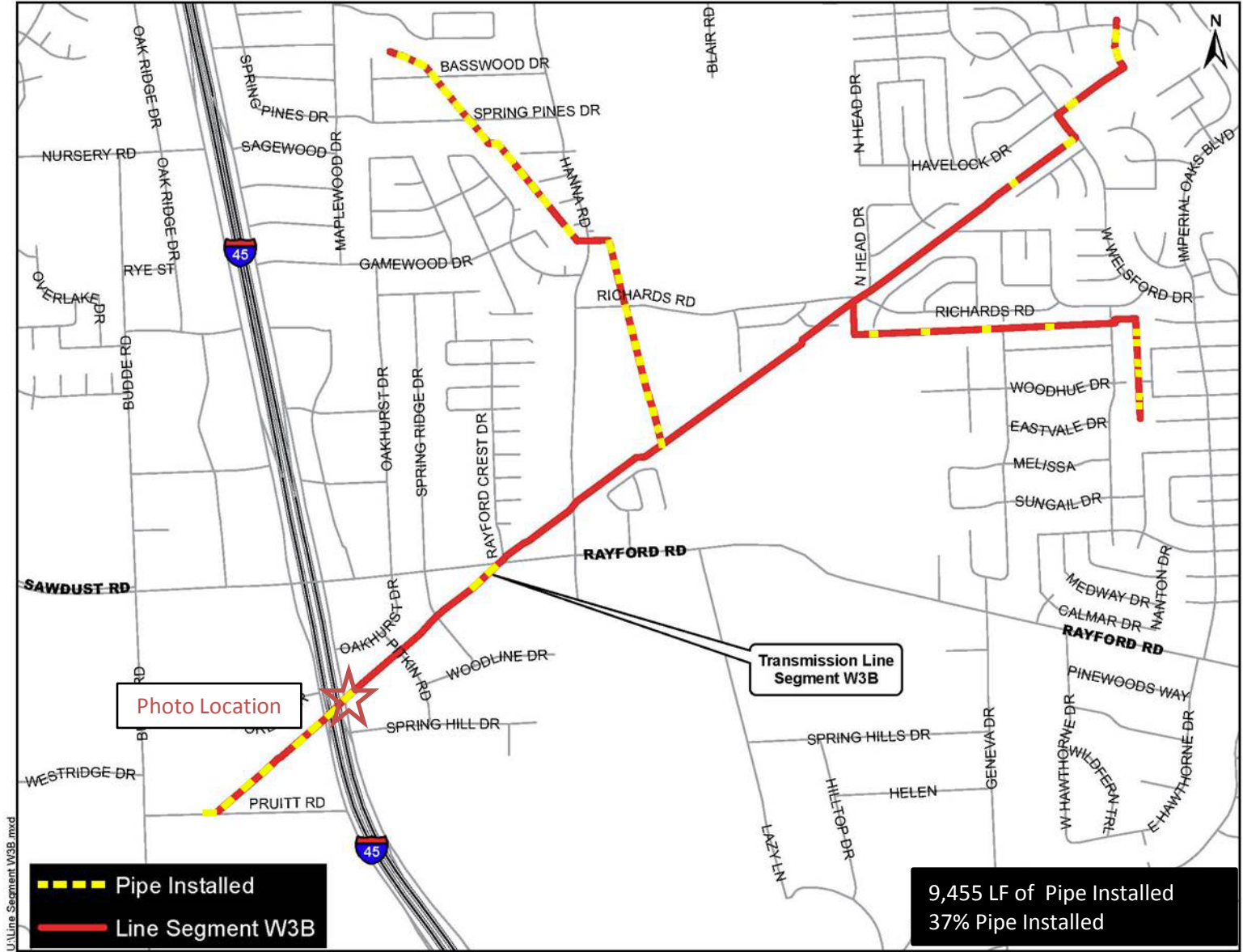
Photo Location

Transmission Line Segment W3A

6,984 LF of Pipe Installed  
49% Pipe Installed



Traffic restoration at Grogans Mill Rd. and Millpark Dr.



U:\Line Segment W3B.mxd

- Pipe Installed
- Line Segment W3B

Transmission Line Segment W3B

9,455 LF of Pipe Installed  
37% Pipe Installed



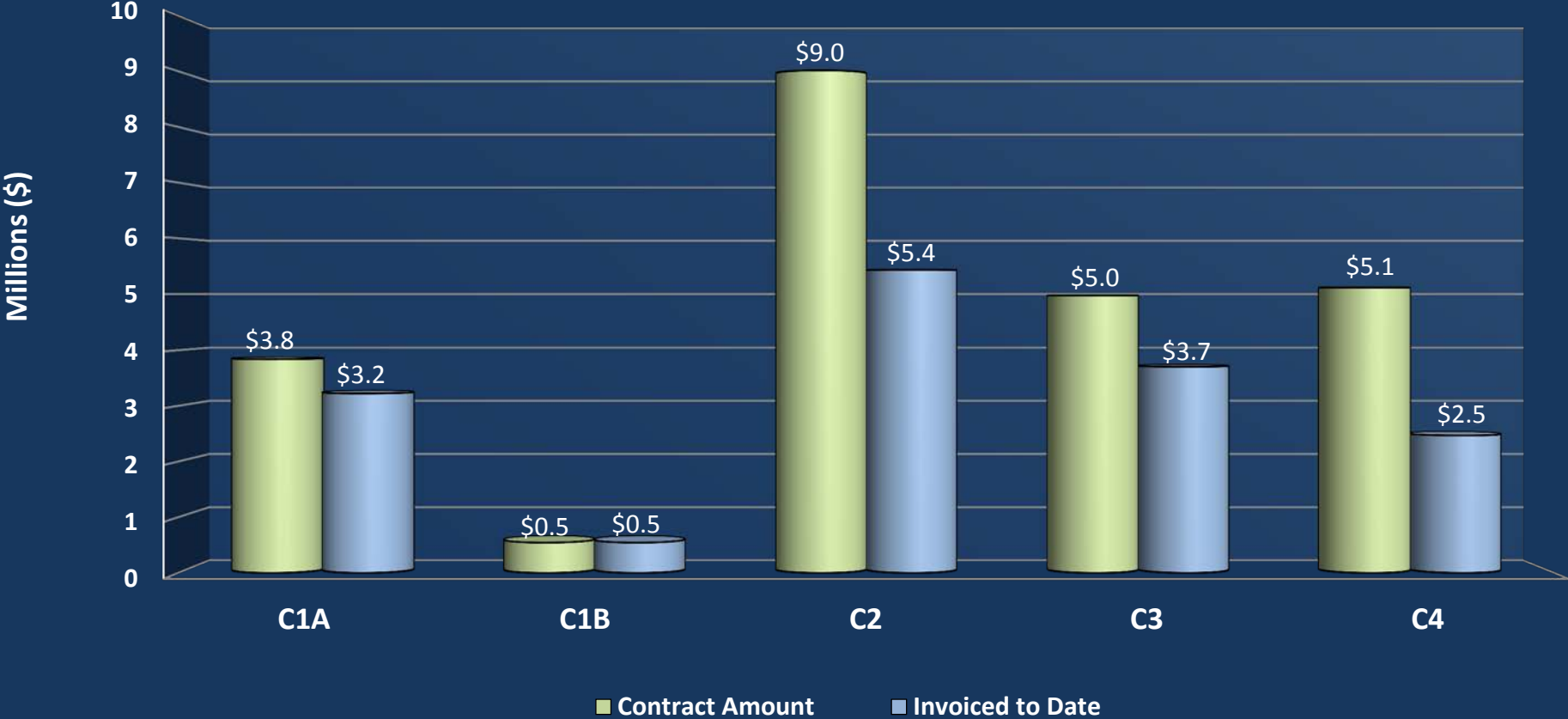


36-inch dry bore auger machine for Rayford Road Crossing



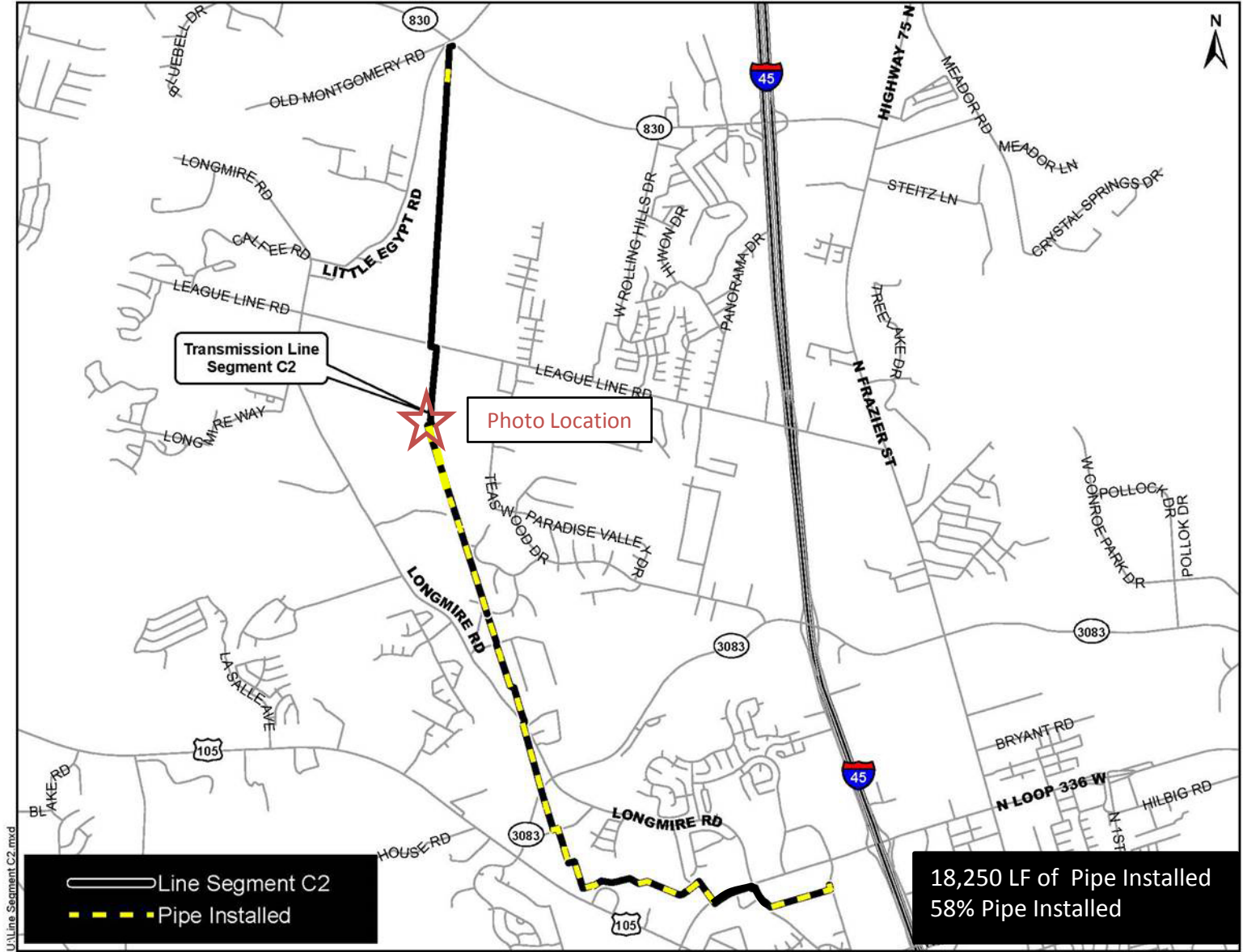
Interior view of 52-inch steel liner tunnel under I-45

# SURFACE WATER TRANSMISSION SYSTEM "C" ROUTES - PROJECT DATA



# SURFACE WATER TRANSMISSION SYSTEM "C" ROUTES - PROJECT STATUS

Line	Overall % Complete	Testing % Complete	Substantial Completion	Final Completion
C1A	84%			
C1B	100%	100%	✓	✓
C2	60%			
C3	74%			
C4	48%			



Transmission Line Segment C2

Photo Location

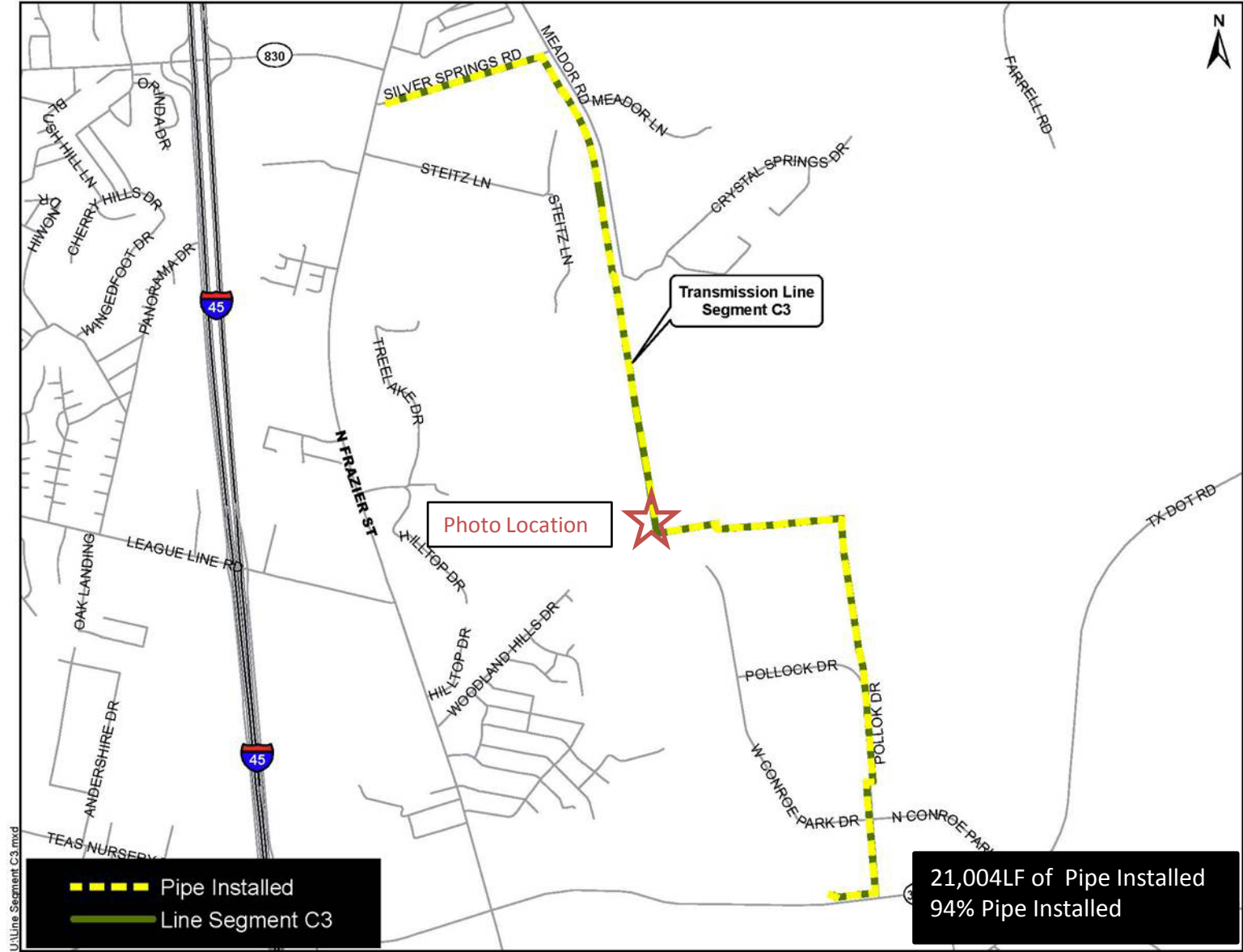
— Line Segment C2  
- - - Pipe Installed

18,250 LF of Pipe Installed  
58% Pipe Installed

U:\Line Segment C2.mxd



36-inch open cut pipe installation along Entergy easement



--- Pipe Installed  
— Line Segment C3

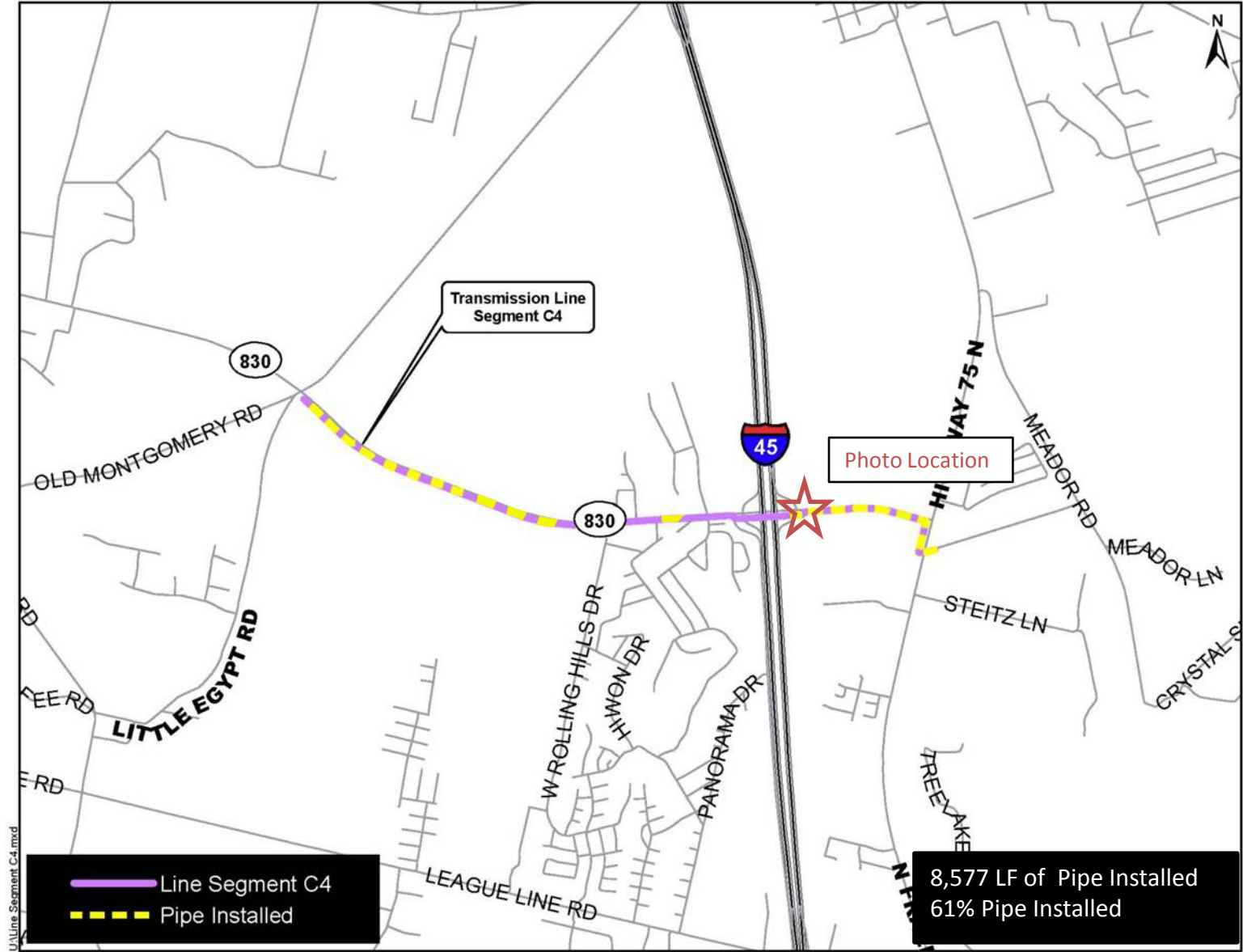
21,004LF of Pipe Installed  
94% Pipe Installed

U:\Line Segment C3.mxd



Open cut pipe installation adjacent to Union Pacific Railroad property



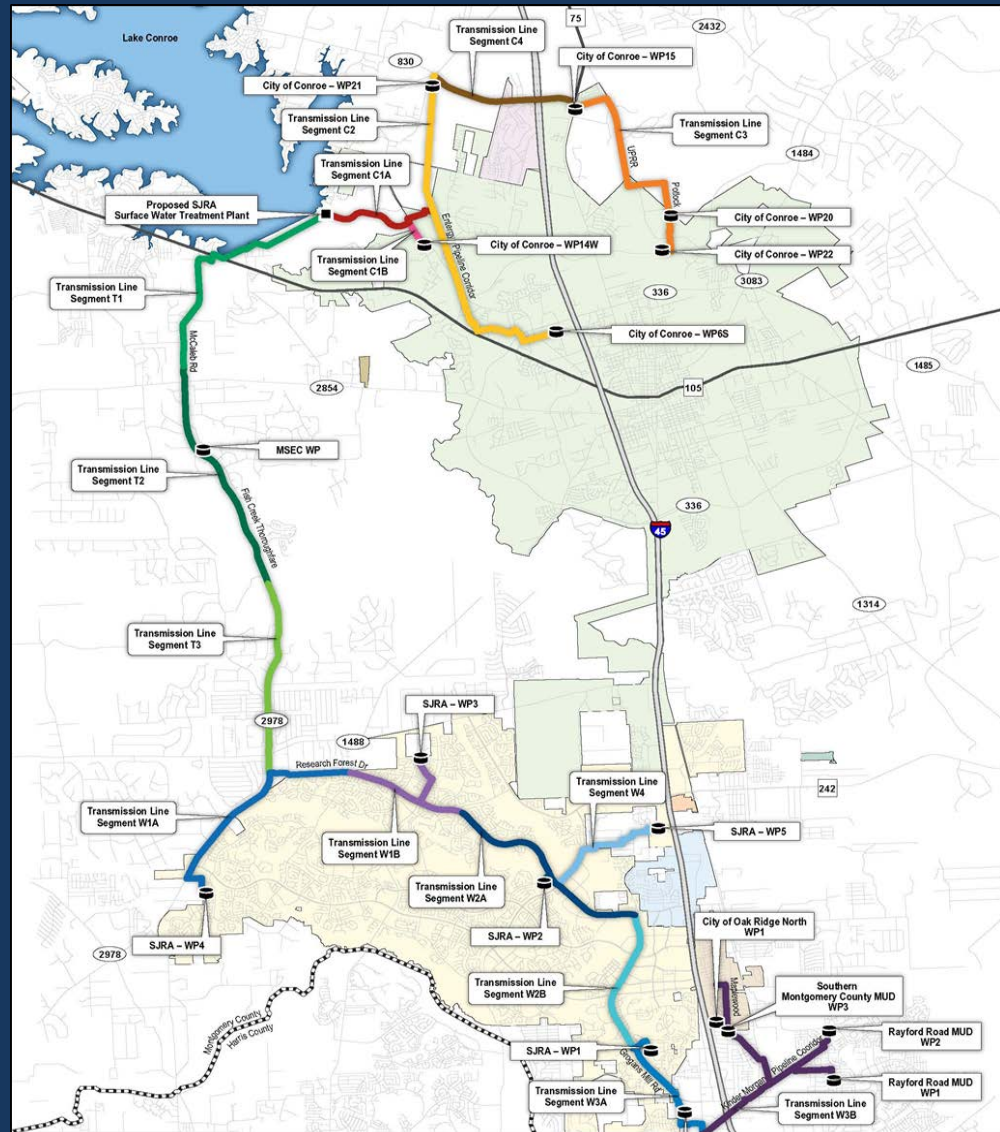


U:\Line Segment C4.mxd

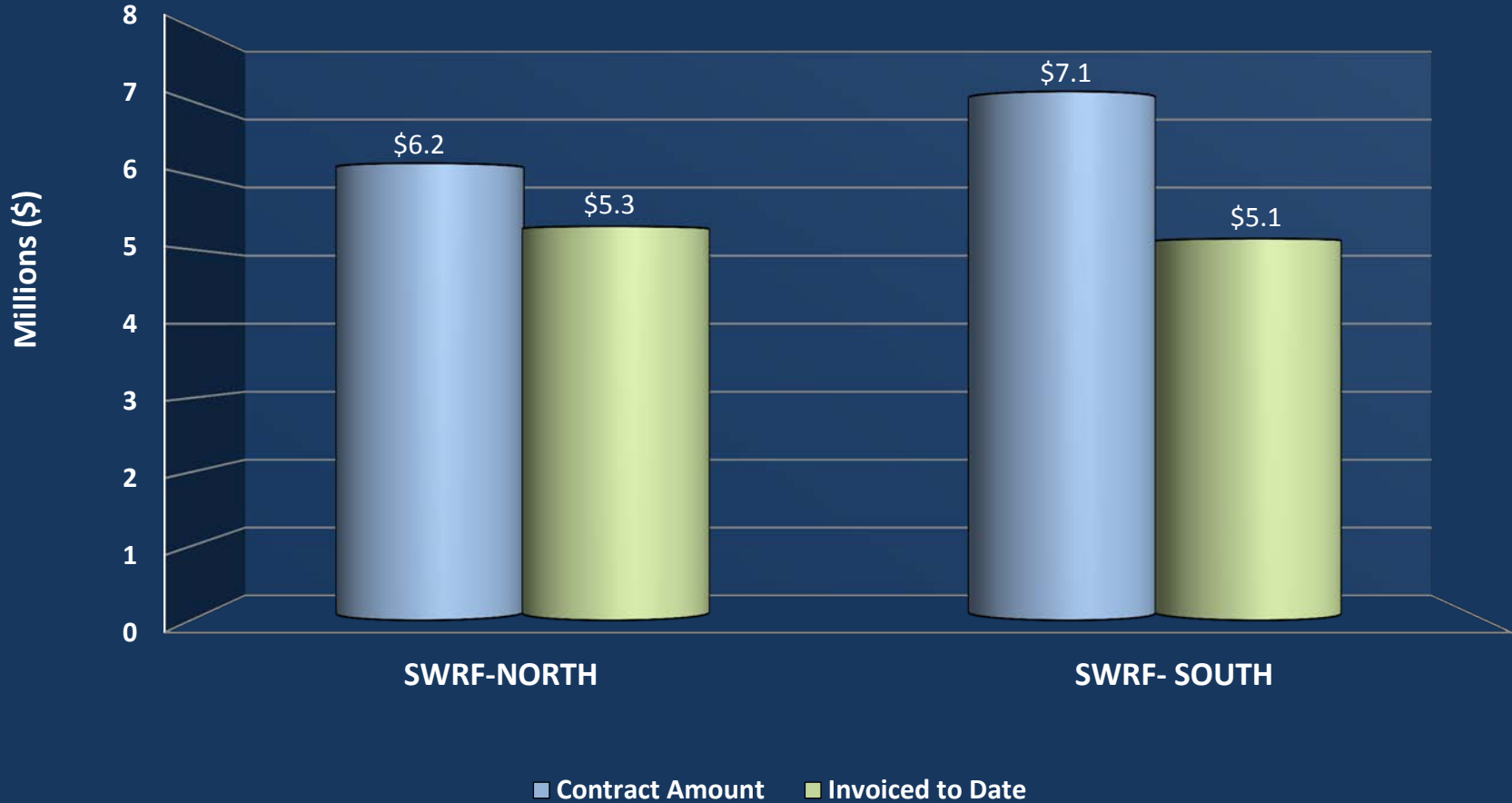


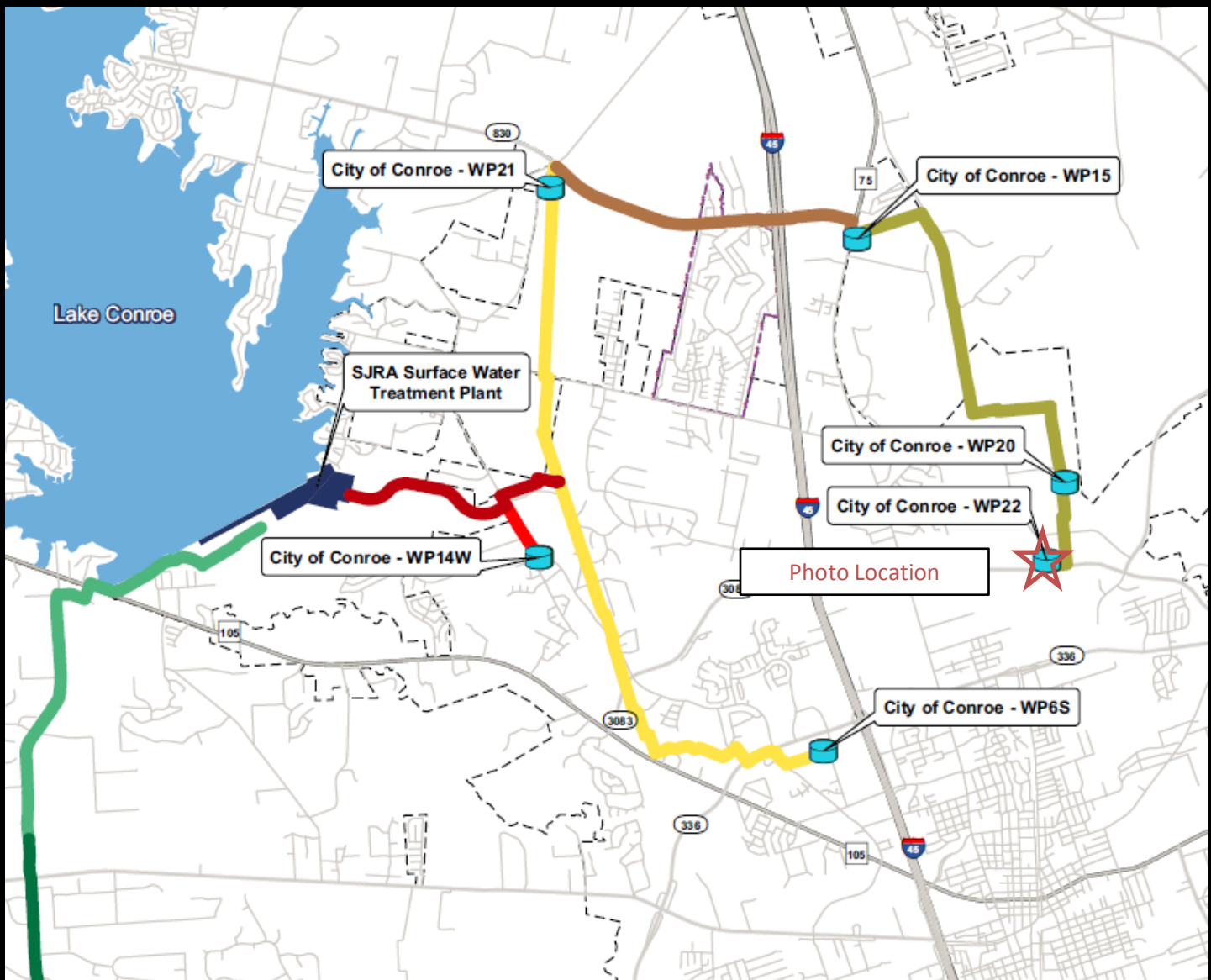
Tunnel operation for 20-inch waterline installation under I-45

# SURFACE WATER RECEIVING FACILITIES CONSTRUCTION PROGRESS



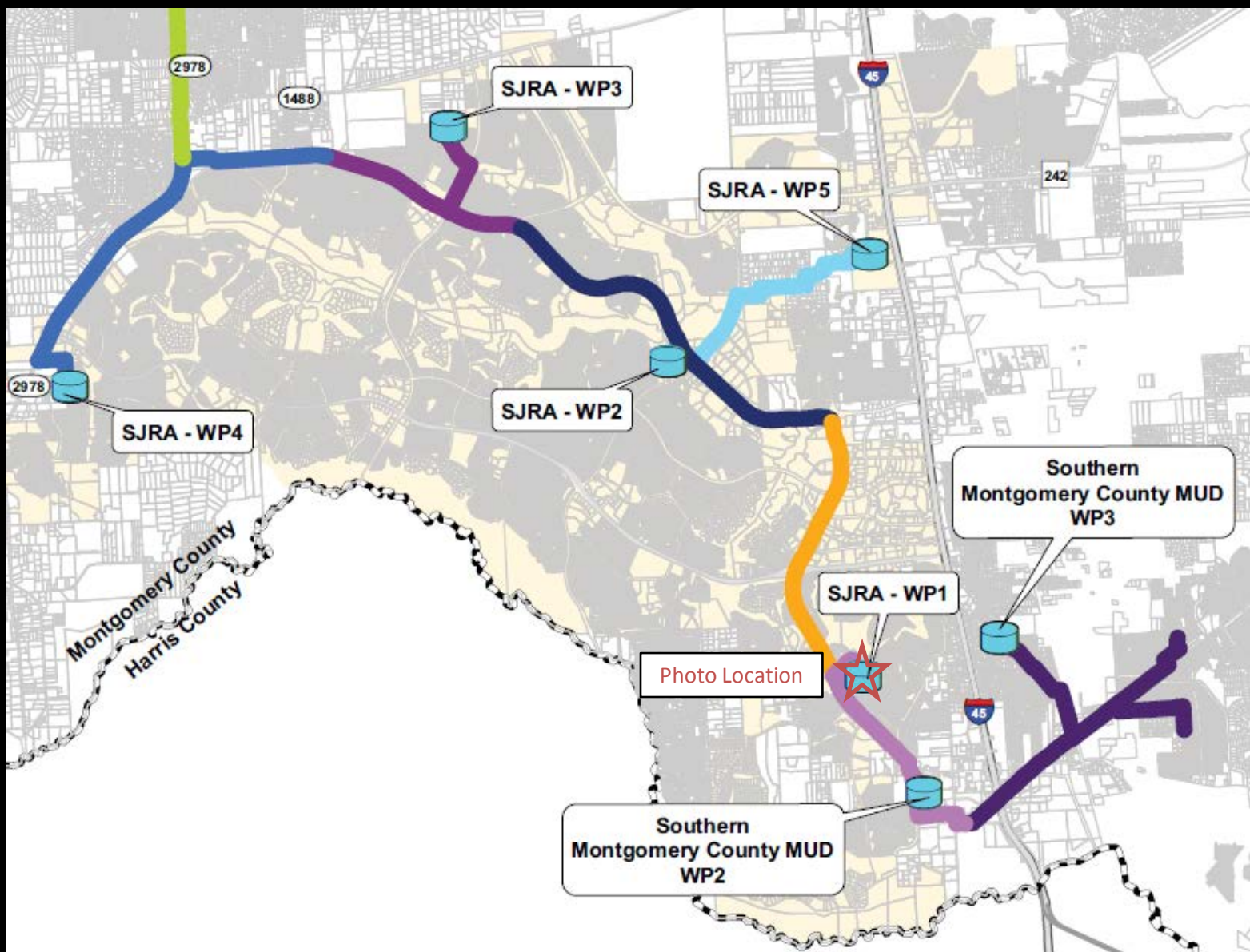
# SURFACE WATER TRANSMISSION SYSTEM RECEIVING FACILITIES - PROJECT DATA







Site work at Conroe Water Plant No. 22

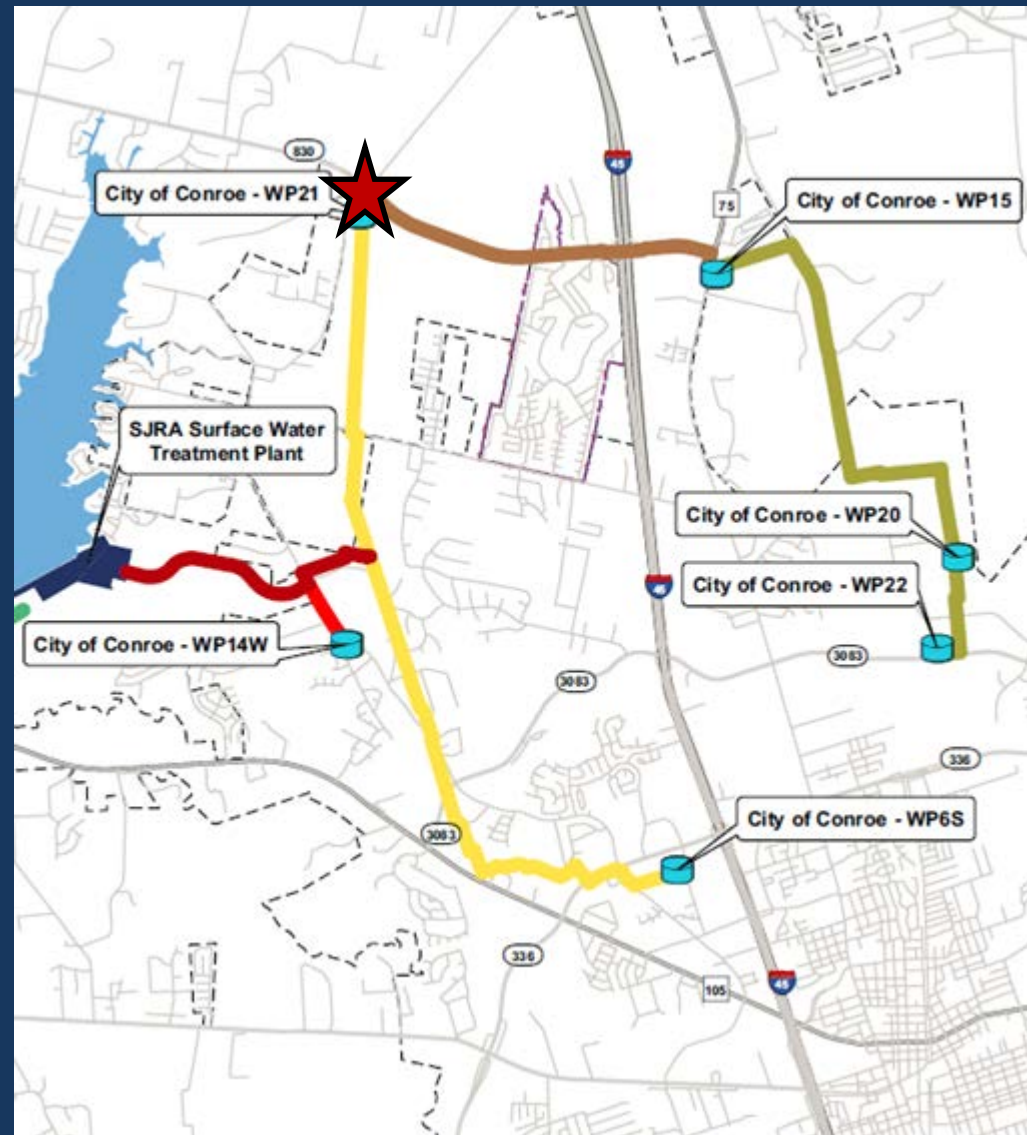




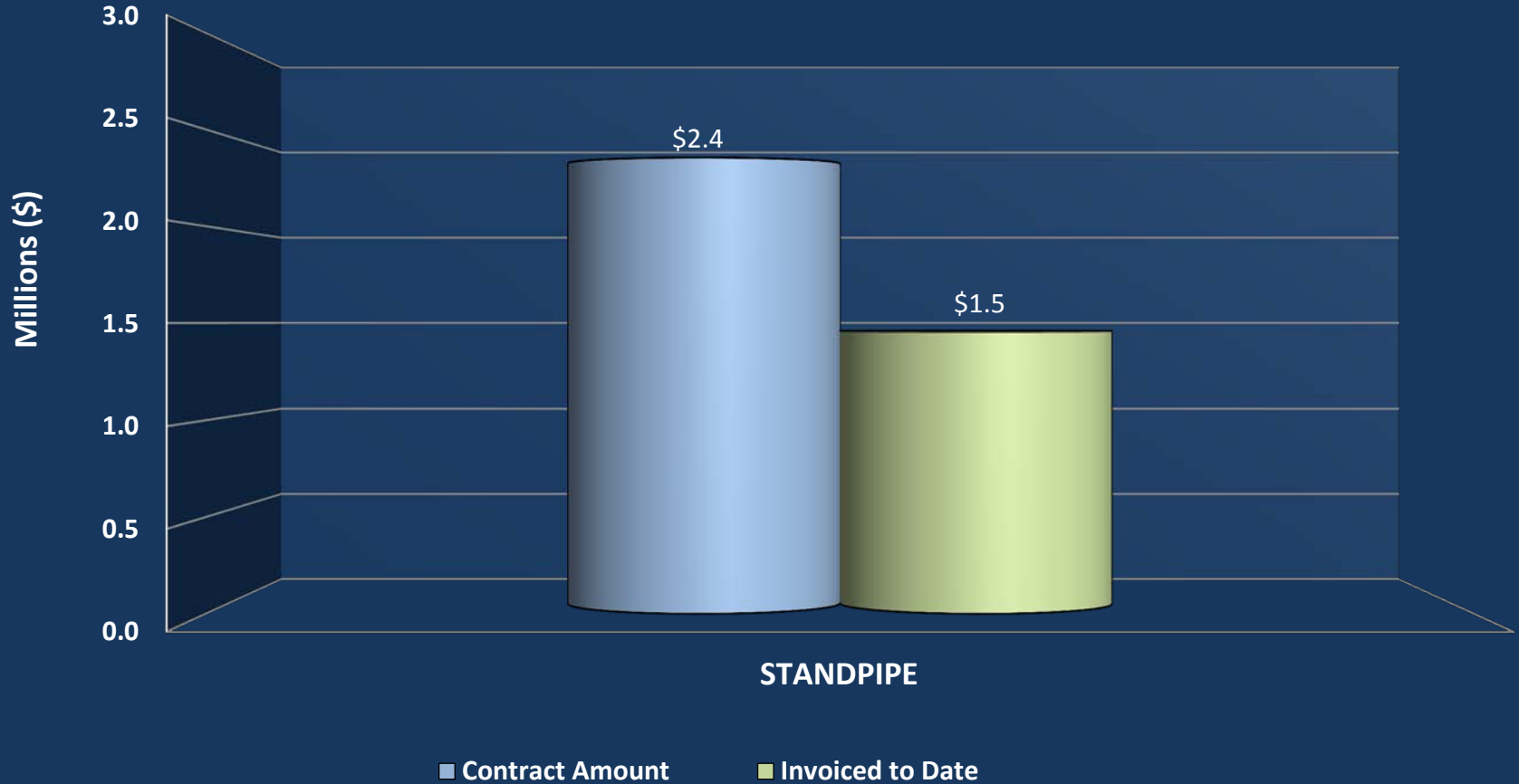
Flow Control Pressure Slab installation at Woodlands Water Plant No. 1



# SURFACE WATER STANDPIPE CONSTRUCTION PROGRESS



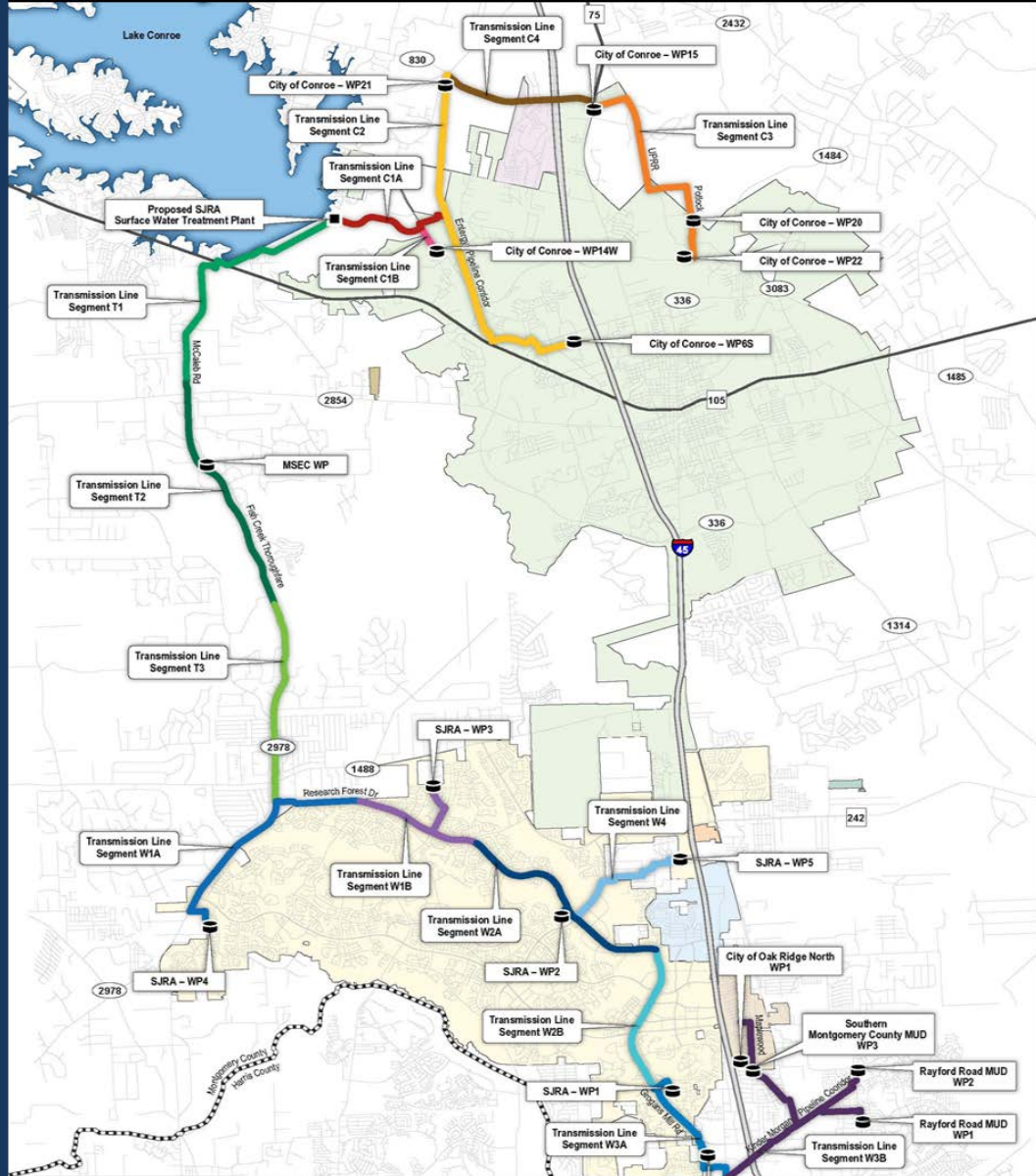
# SURFACE WATER TRANSMISSION SYSTEM STANDPIPE - PROJECT DATA



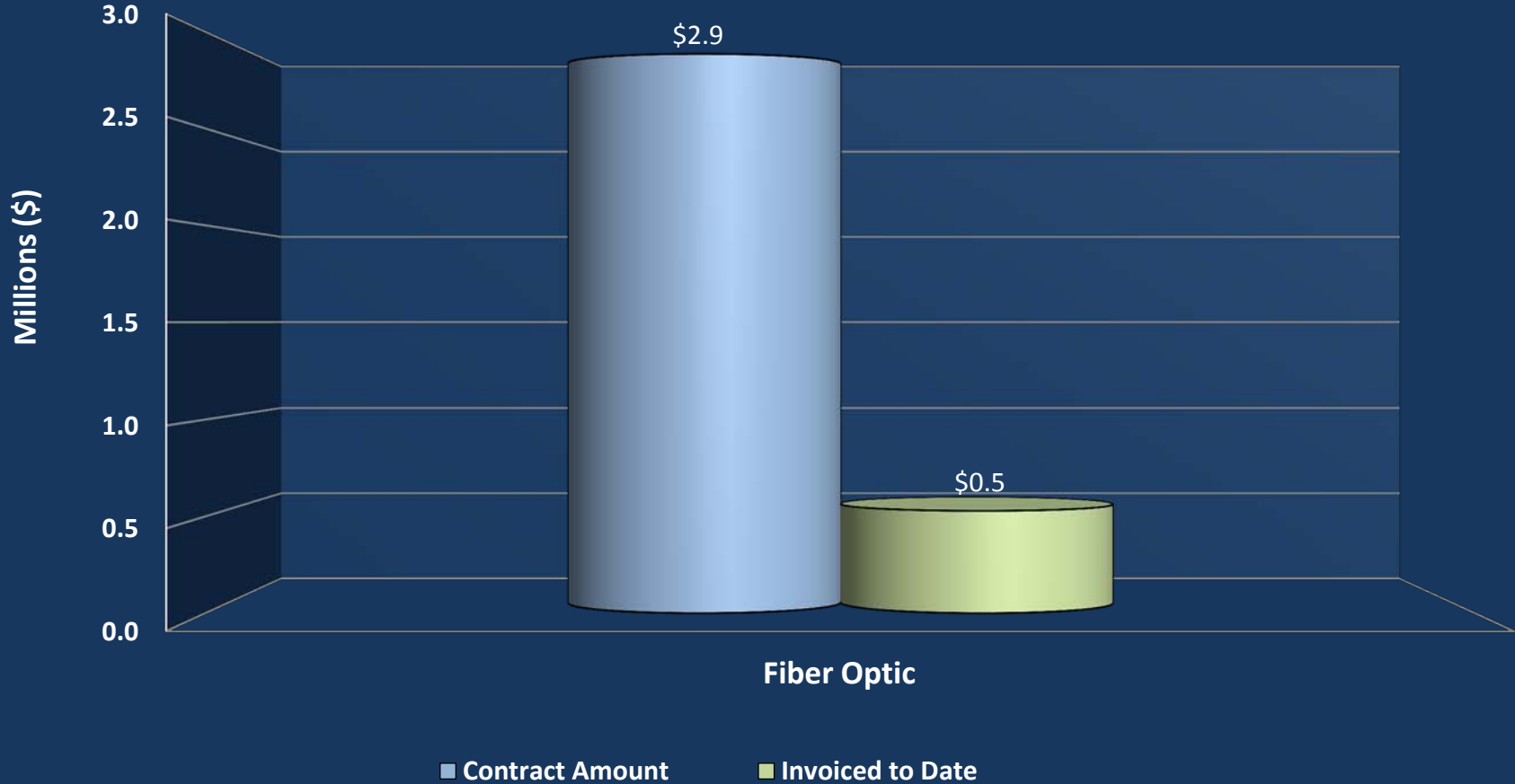


Standpipe tank installation – 120 feet tall and 25 feet in diameter

# FIBER OPTIC COMMUNICATION CONSTRUCTION ADMINISTRATION



# SURFACE WATER TRANSMISSION SYSTEM FIBER OPTIC- PROJECT DATA



# SURFACE WATER TRANSMISSION SYSTEM CONSTRUCTION PROGRESS

## QUESTIONS?

