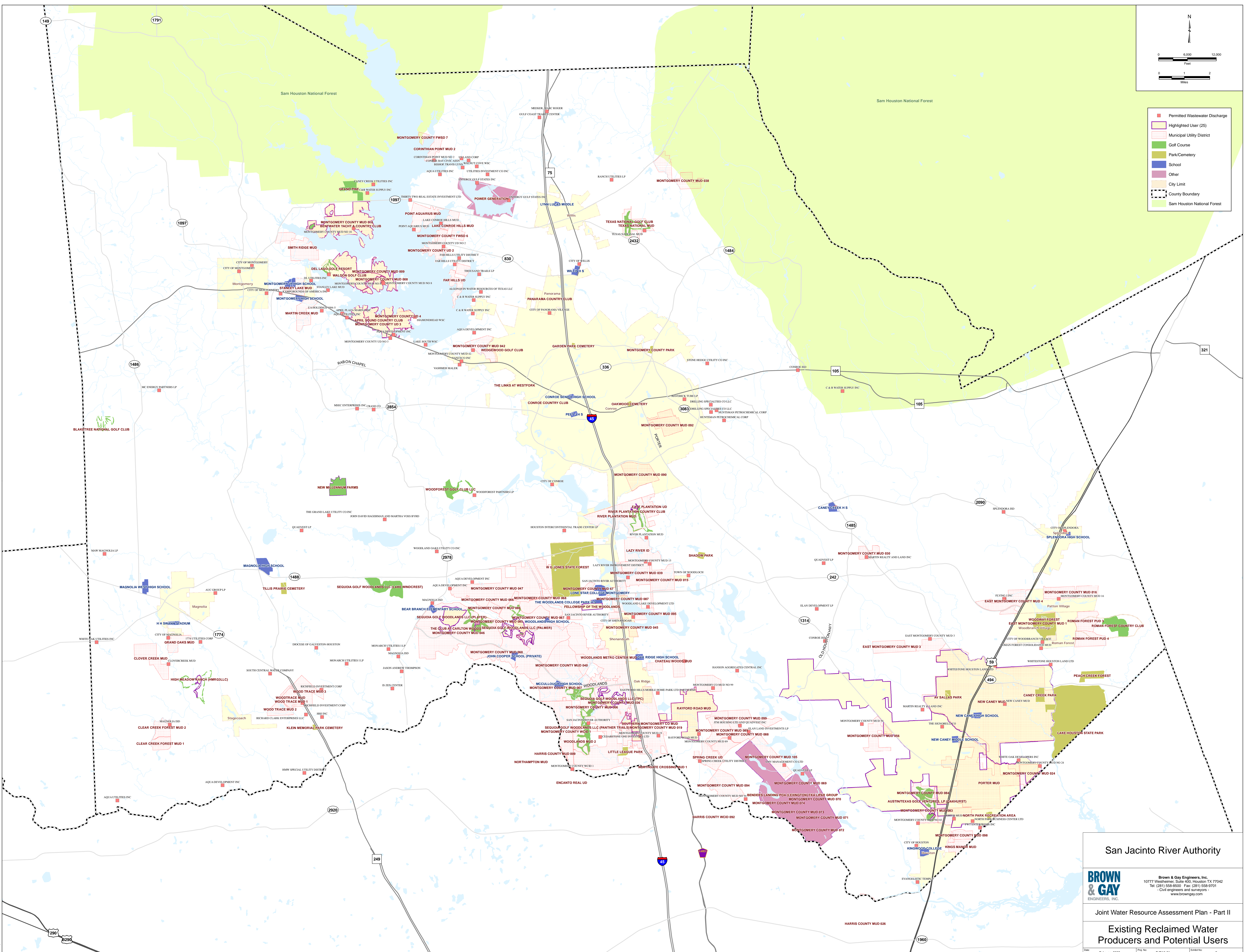


- Permitted Wastewater Discharge
- Highlighted User (25)
- Municipal Utility District
- Golf Course
- Park/Cemetery
- School
- Other
- City Limit
- County Boundary
- Sam Houston National Forest



San Jacinto River Authority

BROWN & GAY
ENGINEERS, INC.

Brown & Gay Engineers, Inc.
10777 Westheimer, Suite 400, Houston TX 77042
Tel: (281) 568-8500 Fax: (281) 568-9701
Civil engineers and surveyors
www.browngay.com

Joint Water Resource Assessment Plan - Part II

Existing Reclaimed Water Producers and Potential Users

DATE: February 2009 PROJECT: SRR10-61 SHEET NO: 2

M:\Projects\BROWN\GIS\ENR\Map\BGP_Reclaim\Area_2008011.mxd