

SJRA GRP  
Surface Water Facilities  
Construction Projects

January 2013

# Surface Water Facilities

- Cost = \$90,331,558.00 (thru EWP3)
- Change Orders = \$0.00
- Total = \$90,331,558.00
- Total Estimated Cost To Date: \$190,078,395.00
- Total Project Budget: \$191,000,000.00
- Scheduled Completion Date: June 1, 2015



## Construction Photos November – December 2012



November 13, 2012 – Ground Storage Tank No. 2



November 13, 2012 – Ground Storage Tank No. 2



November 20, 2012 – Bent No. 2 at Raw Water Pump Station



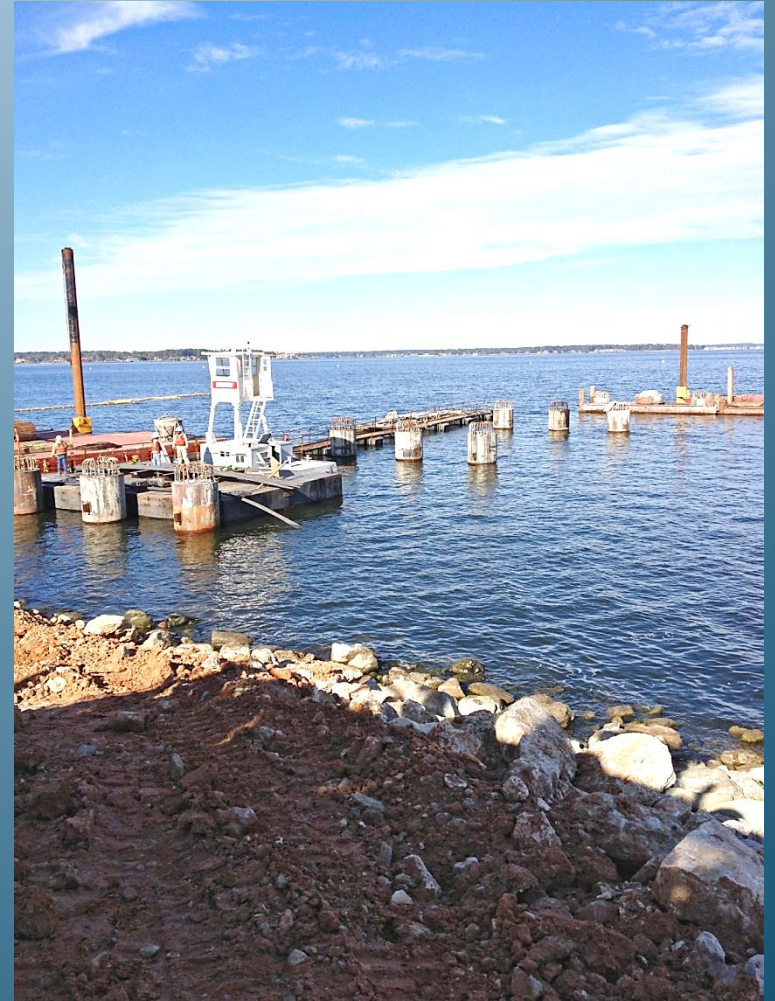
December 11, 2012 – High Service Discharge Pump Station



## Construction Photos November – December 2012



December 12, 2012 – Raw Water Pump Station Abutment



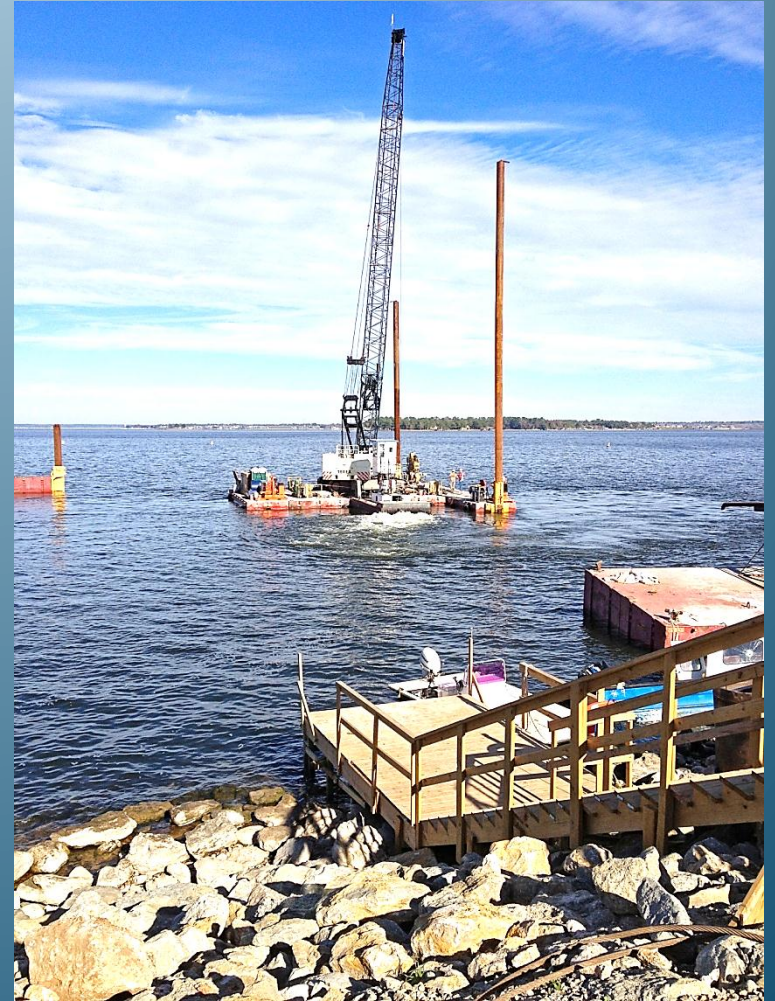
December 14, 2012 – Raw Water Pump Station



## Construction Photos November – December 2012



December 14, 2012 – Raw Water Pump Station Abutment



December 14, 2012 – Raw Water Pump Station



## Construction Photos November – December 2012



November 5, 2012 - Drilling west pier shaft  
RWPS Bent No. 3



## Construction Photos November – December 2012



November 20, 2012 - Concrete buckets on  
barge near RWPS.



## Construction Photos November – December 2012



December 14, 2012 - Pouring concrete at 3 AM  
at discharge bay