

GRP PROGRAM CONSTRUCTION PROGRESS



**GRP Review
Committee
Meeting
March 24, 2014**



**SJRA Board
of Directors
Meeting
March 27, 2014**

SURFACE WATER FACILITY CONSTRUCTION ADMINISTRATION

Project Data Thru 2/28/2014

Contracted Amount:	\$190,704,740.00
Change Orders:	\$ 0.00
Estimate to Complete:	\$190,704,740.00
Amount Invoiced:	\$ 91,723,141.00
Percent Complete:	48%
Completion Date:	June 2015



SURFACE WATER FACILITY CONSTRUCTION ADMINISTRATION

Project Data Thru 2/28/2014

- Plant startup and commissioning plan development is underway
- Plant equipment factory acceptance testing has begun
- Plant construction daily workforce is approximately 350 workers





**Raw Water Intake
and Pump Station**





Previous progress photograph



Interior view of masonry installation



**GAC
Contactors**

**Membrane
Building**

**Pretreatment
Facilities**



Pretreatment Facility– Previous progress photograph



Pretreatment Facility - Access walk way installation



Membrane Building – Previous progress photograph



Membrane Building – Interior pipe trench



Membrane Building – Mechanical and Plumbing rough-in



GAC – Previous progress photograph



GAC – Exterior masonry installation



**High Service Pump Station,
GST's, and Blower Building**





HSPS - Previous progress photograph



HSPS – Electrical room



Blower Building – Previous progress photograph



Blower Building – Masonry installation



**Chemical
Facilities**



Previous progress photograph



Interior view of fire suppression system



**Backwash
Equalization Basin**



Backwash Equalization – Previous progress photograph



Backwash Equalization – Concrete Installation



**Solids-Waste Process
Structures**



Dewatering Building – Previous progress photograph



Dewatering Building – Second floor deck installation



**Operations
Building**



Previous progress photograph



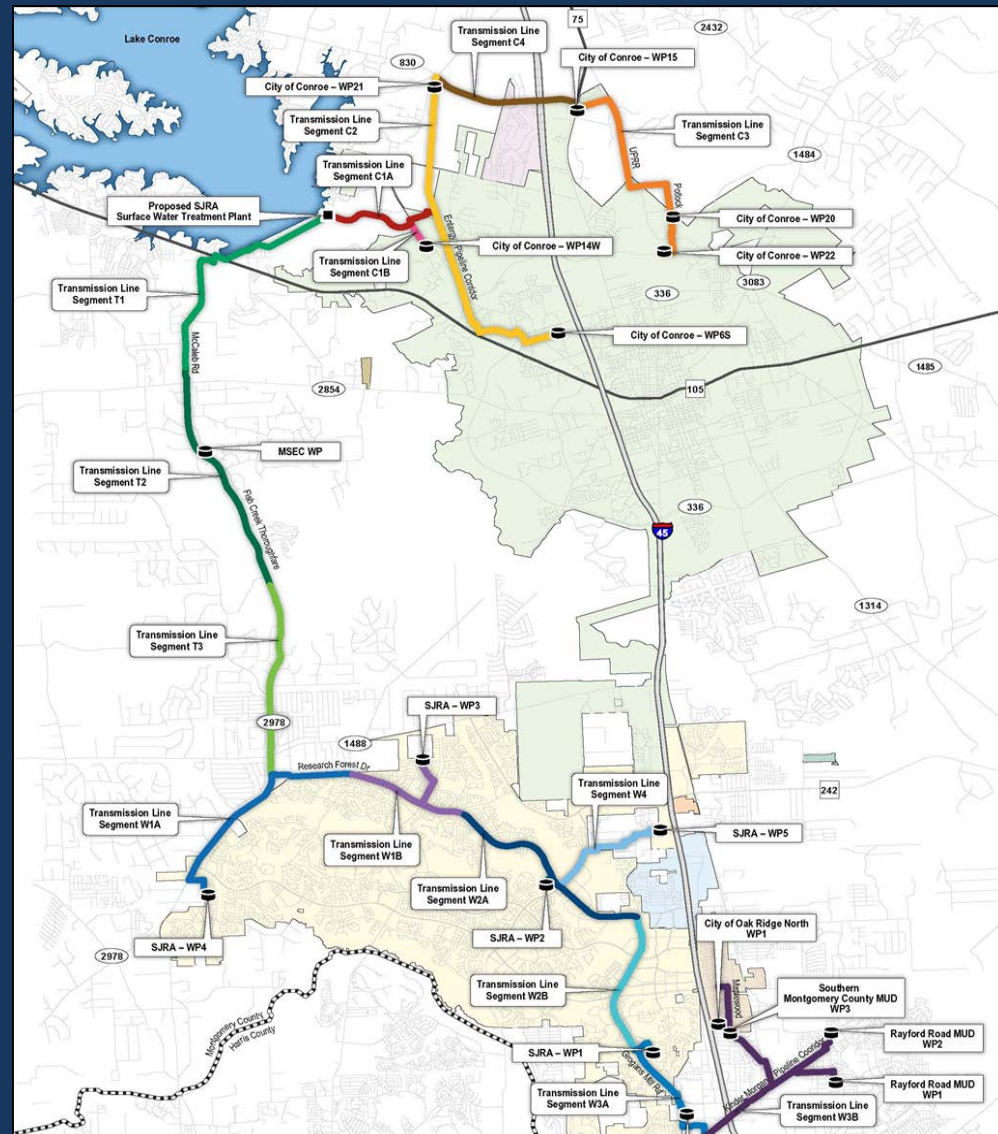
Masonry installation in progress

SURFACE WATER FACILITY CONSTRUCTION PROGRESS

Questions?



SURFACE WATER TRANSMISSION SYSTEM CONSTRUCTION PROGRESS



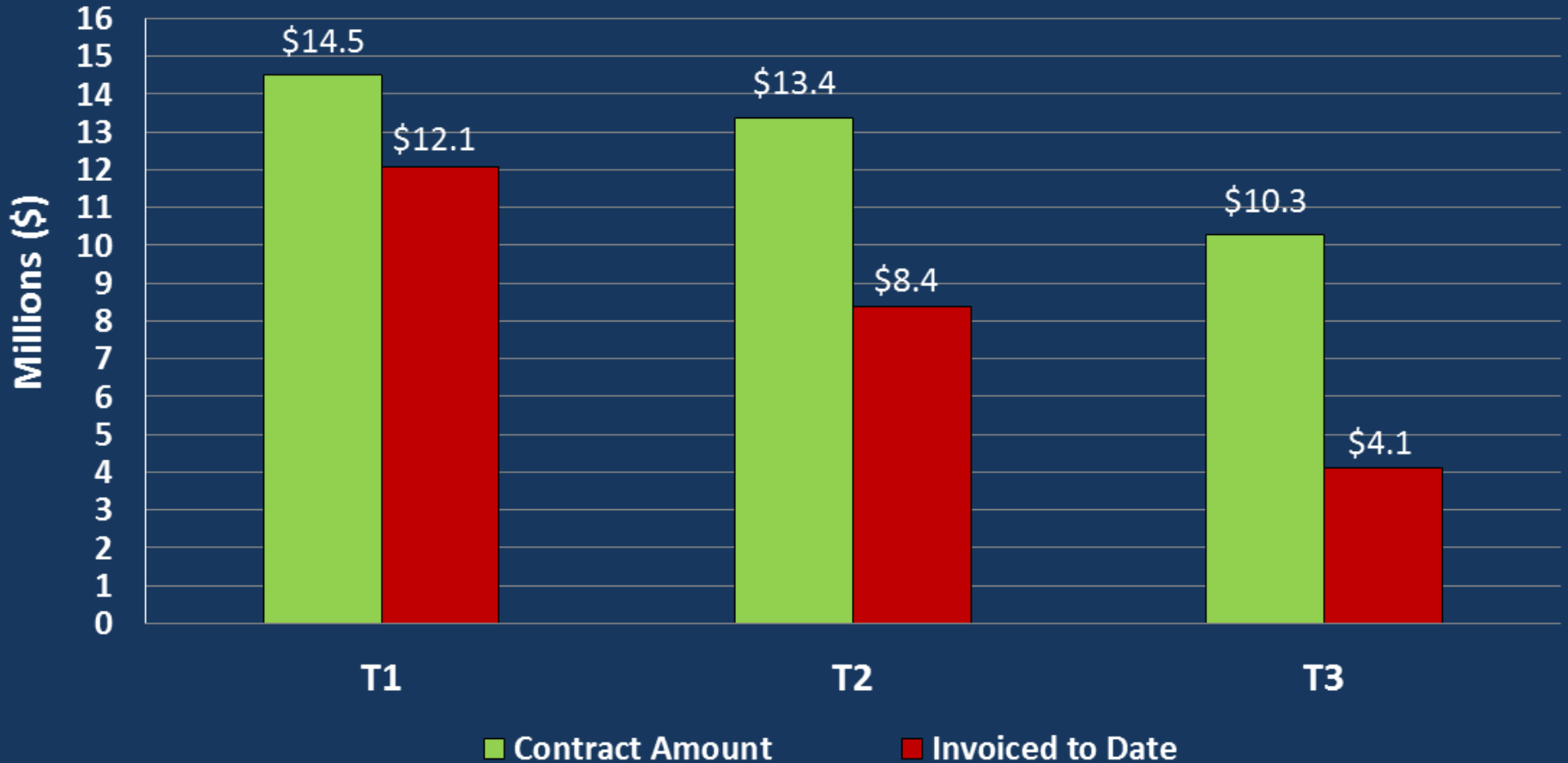
TRANSMISSION LINE SYSTEM CONSTRUCTION ADMINISTRATION

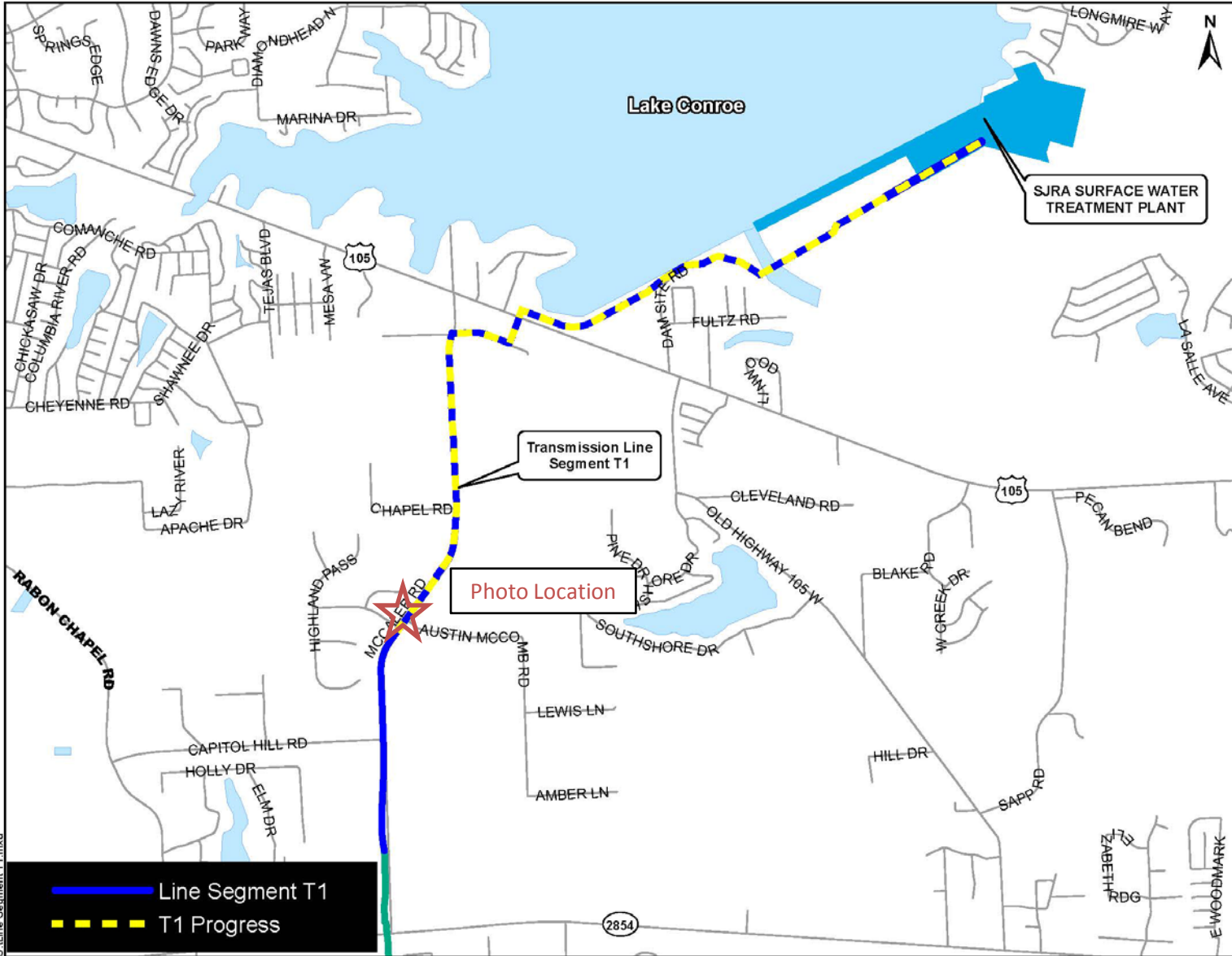
Project Data Thru 2/28/2014

Average Daily workforce:	265 workers
Piping installed to date:	21.5 miles
Average cost per day:	\$352,400
Percentage of pipe installed:	41%



SURFACE WATER TRANSMISSION SYSTEM "T" ROUTES - PROJECT DATA







Manhole installation along McCaleb Road

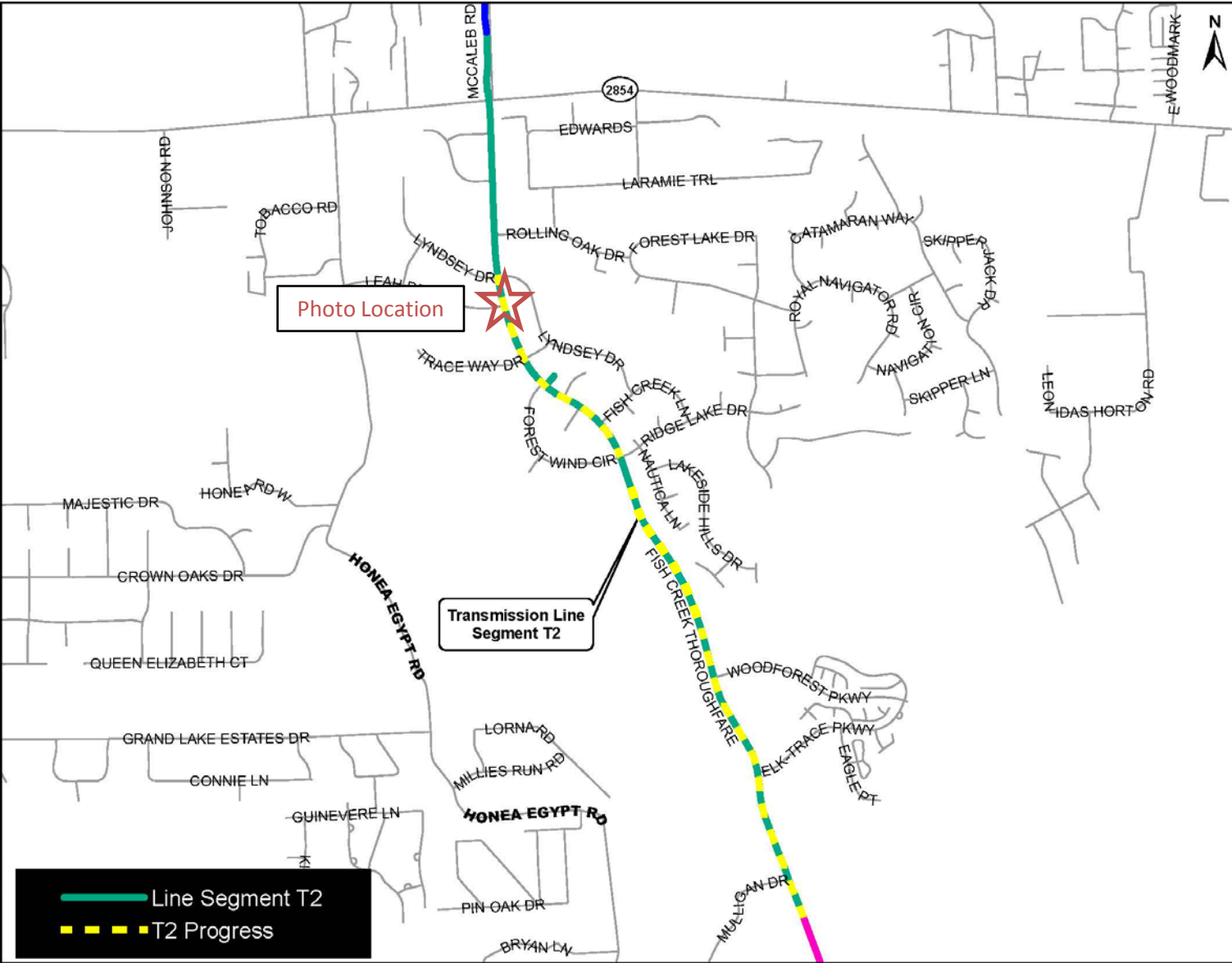


Photo Location



Transmission Line Segment T2

- Line Segment T2
- T2 Progress



54 - inch pipe installation along Fish Creek Thoroughfare

\\Line Segment T3.mxd

 Line Segment T3
 T3 Progress

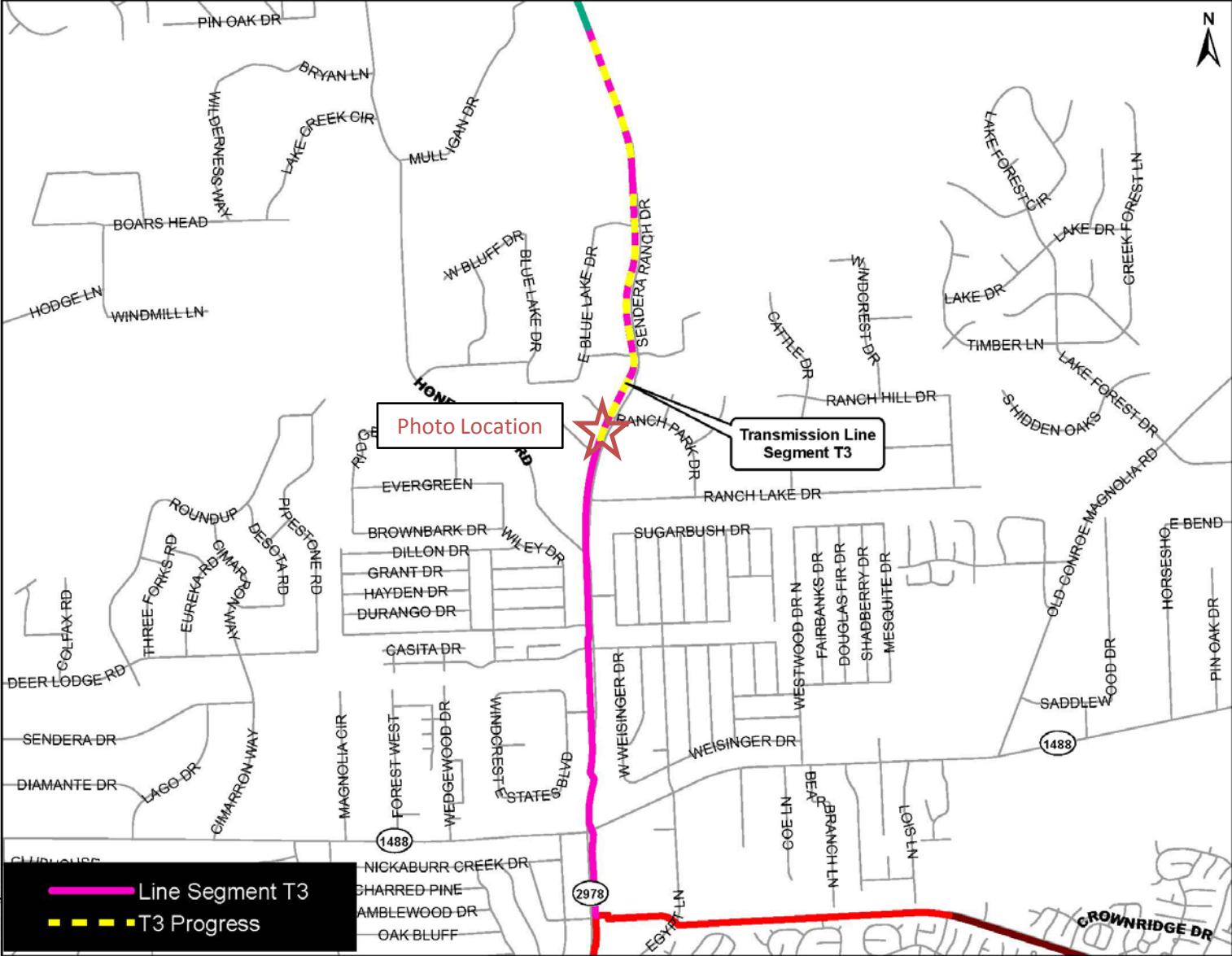


Photo Location

Transmission Line Segment T3

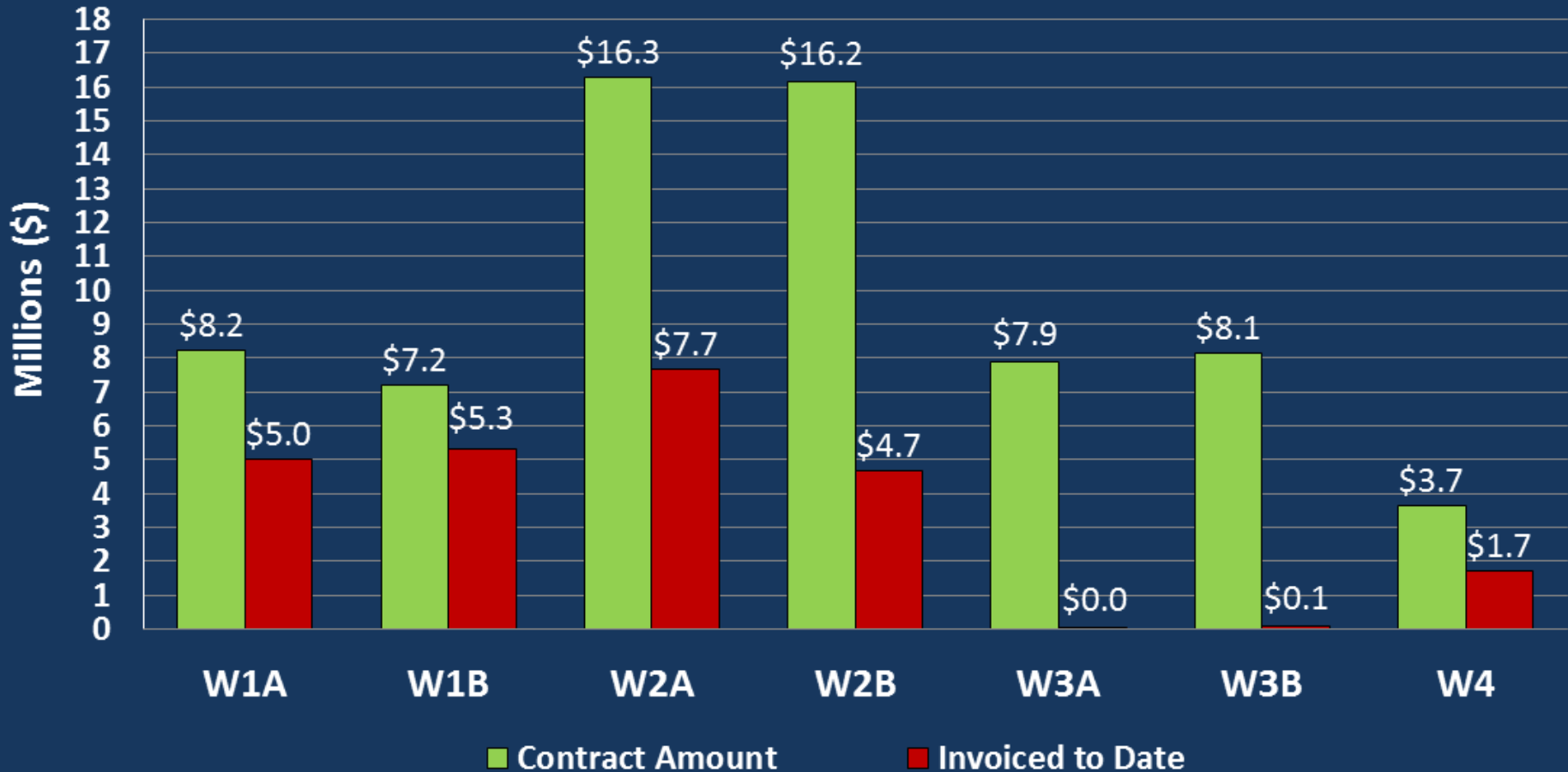


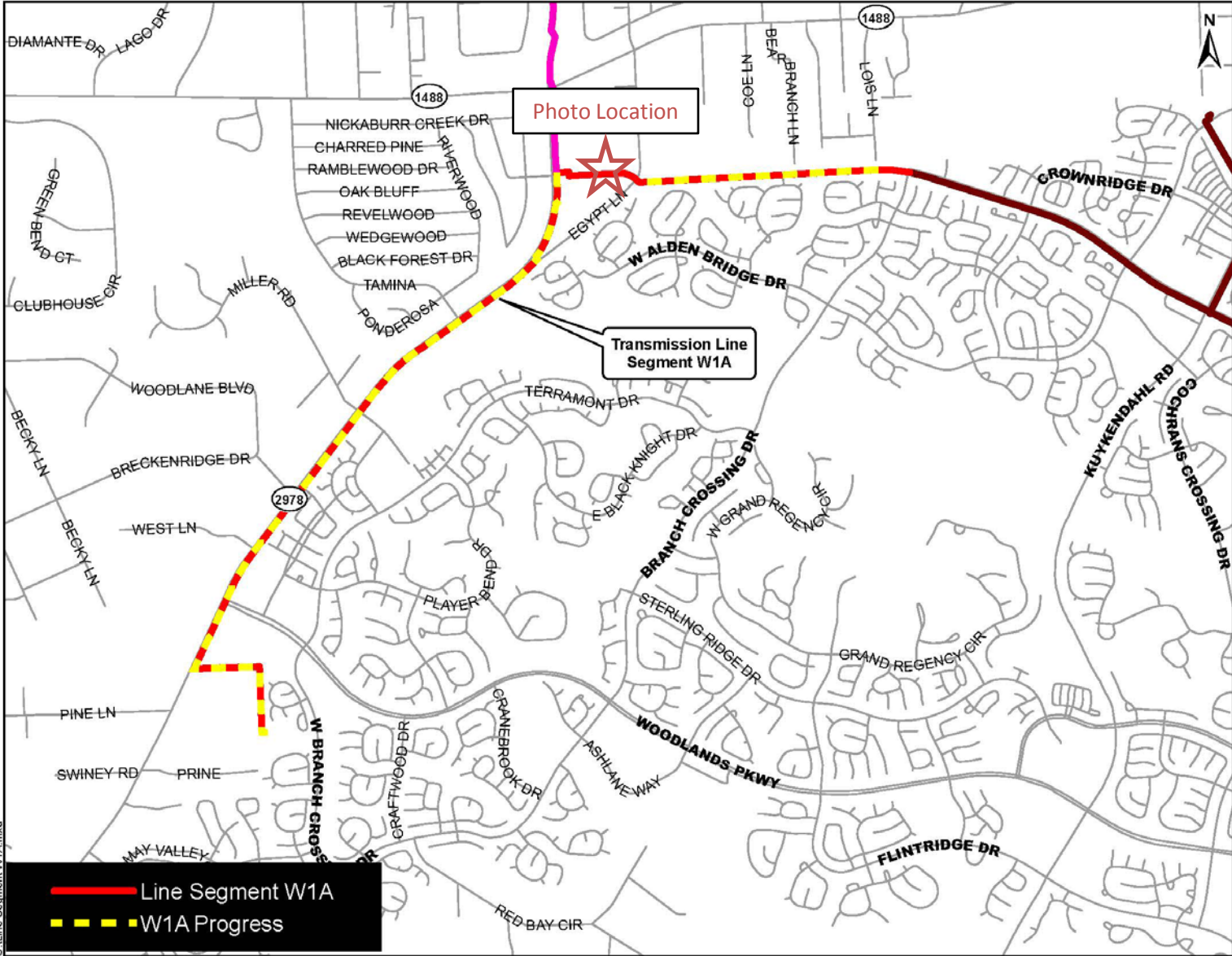


Manhole installation along Sendera Ranch Road

SURFACE WATER TRANSMISSION SYSTEM

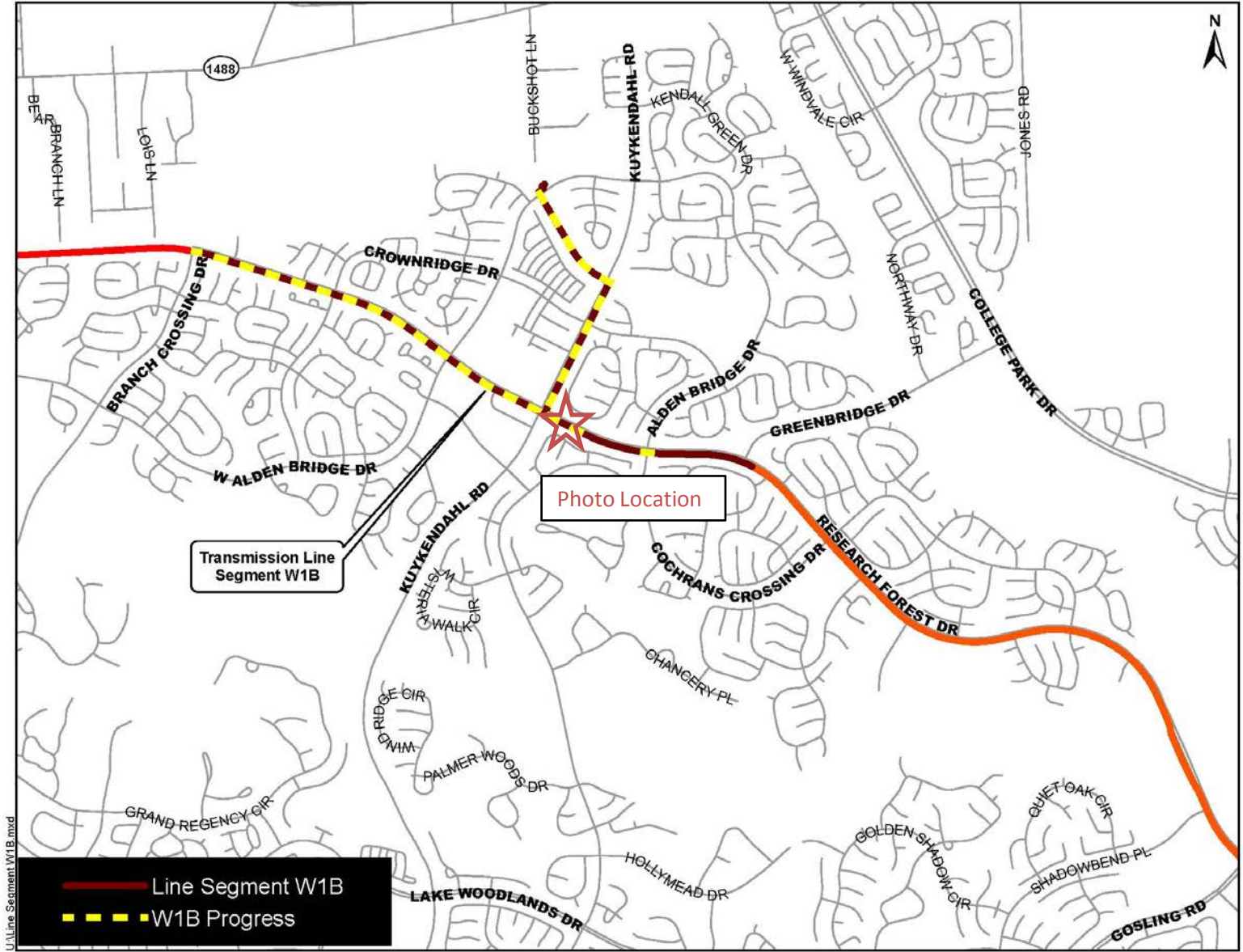
"W" ROUTES - PROJECT DATA







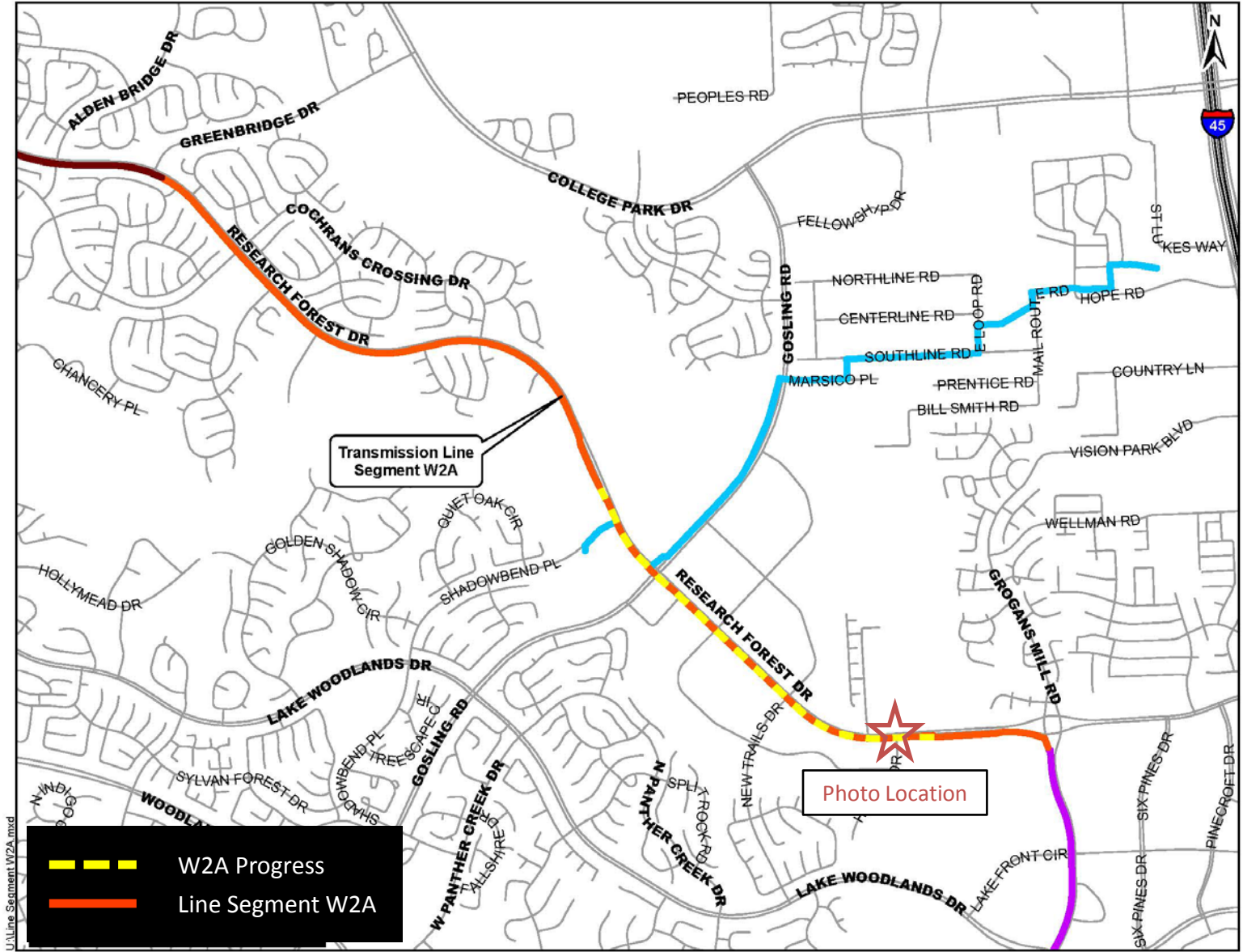
Tunnel operation along Research Forest Drive



U:\Line Segment W1B.mxd



Open cut operation along Research Forest Drive



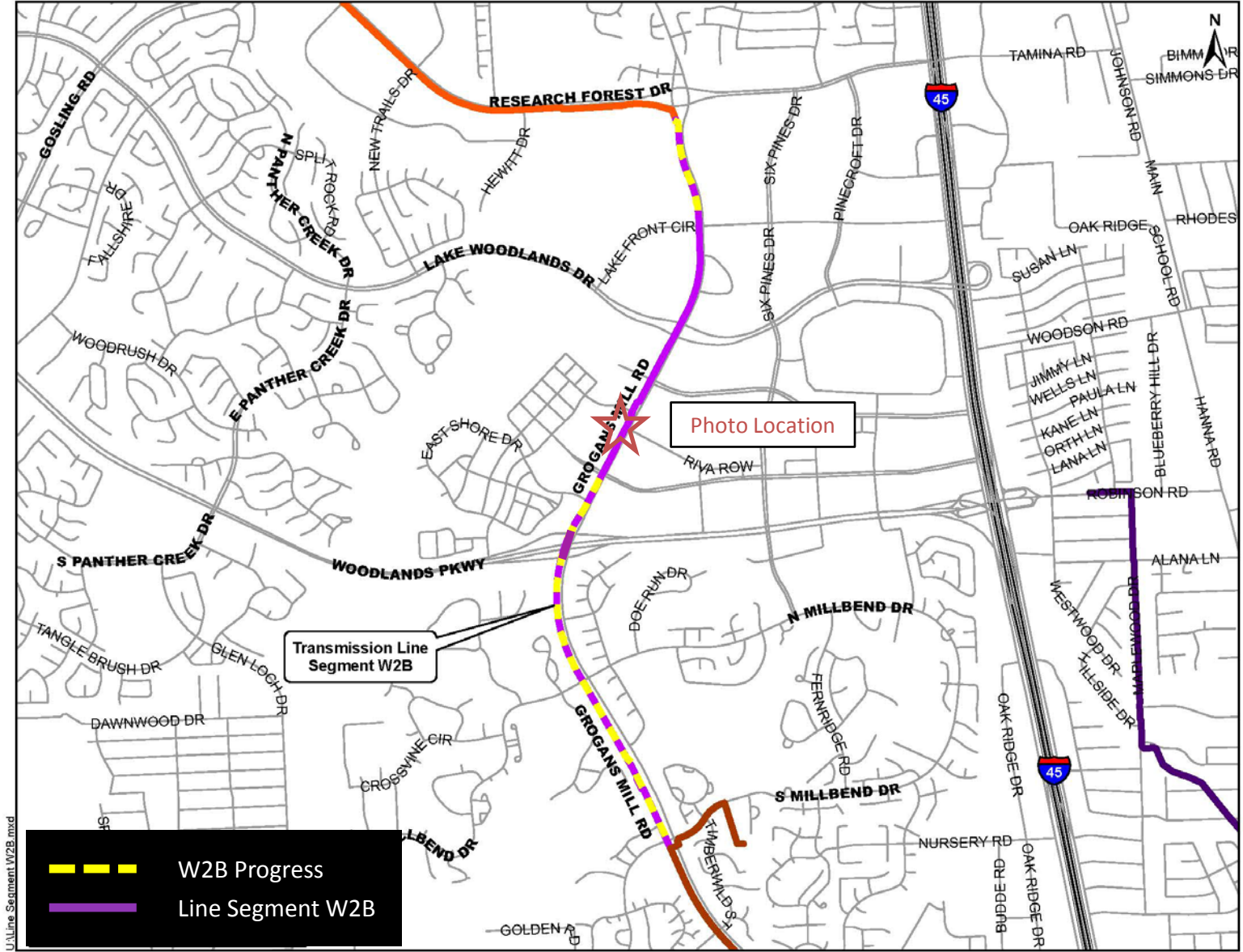
Transmission Line Segment W2A

Photo Location



- W2A Progress
- Line Segment W2A



Restrained joint installation along Research Forest Drive



U:\Line Segment W2B.mxd

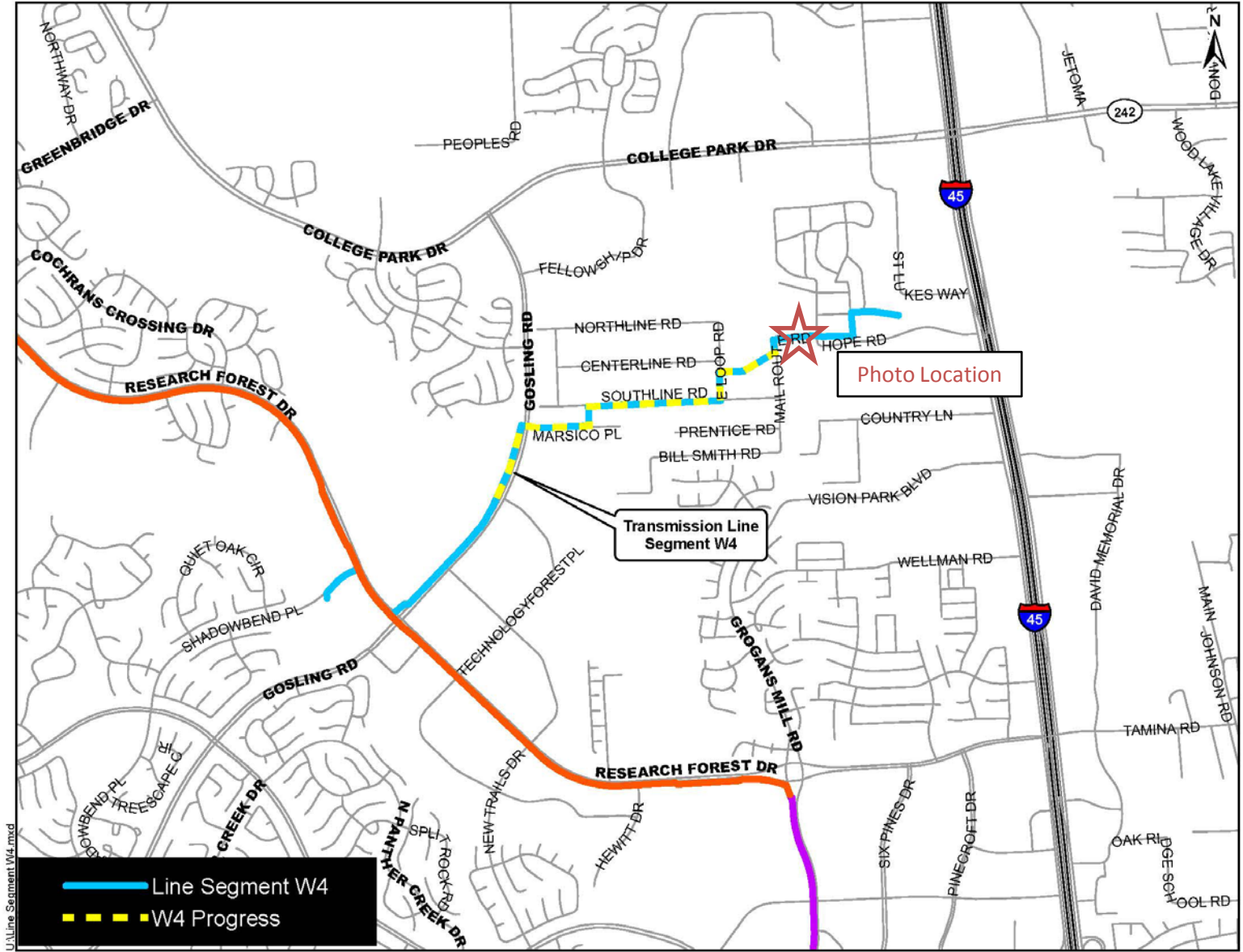
	W2B Progress
	Line Segment W2B

Transmission Line Segment W2B

Photo Location



Tunnel operation at Grogans Mill Road and High Timbers Drive



L:\Line Segment W4.mxd

— Line Segment W4
- - - W4 Progress

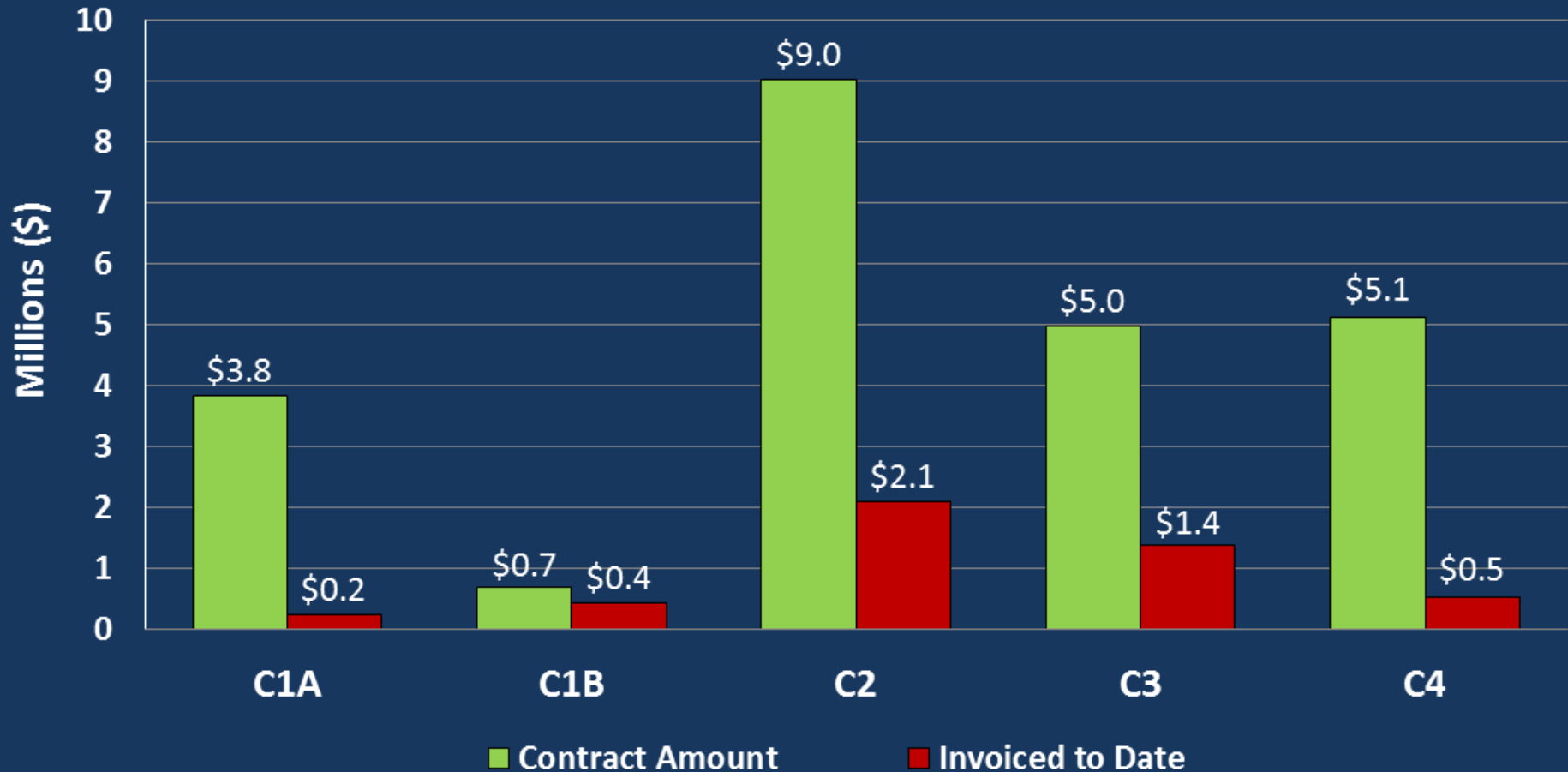
Transmission Line Segment W4

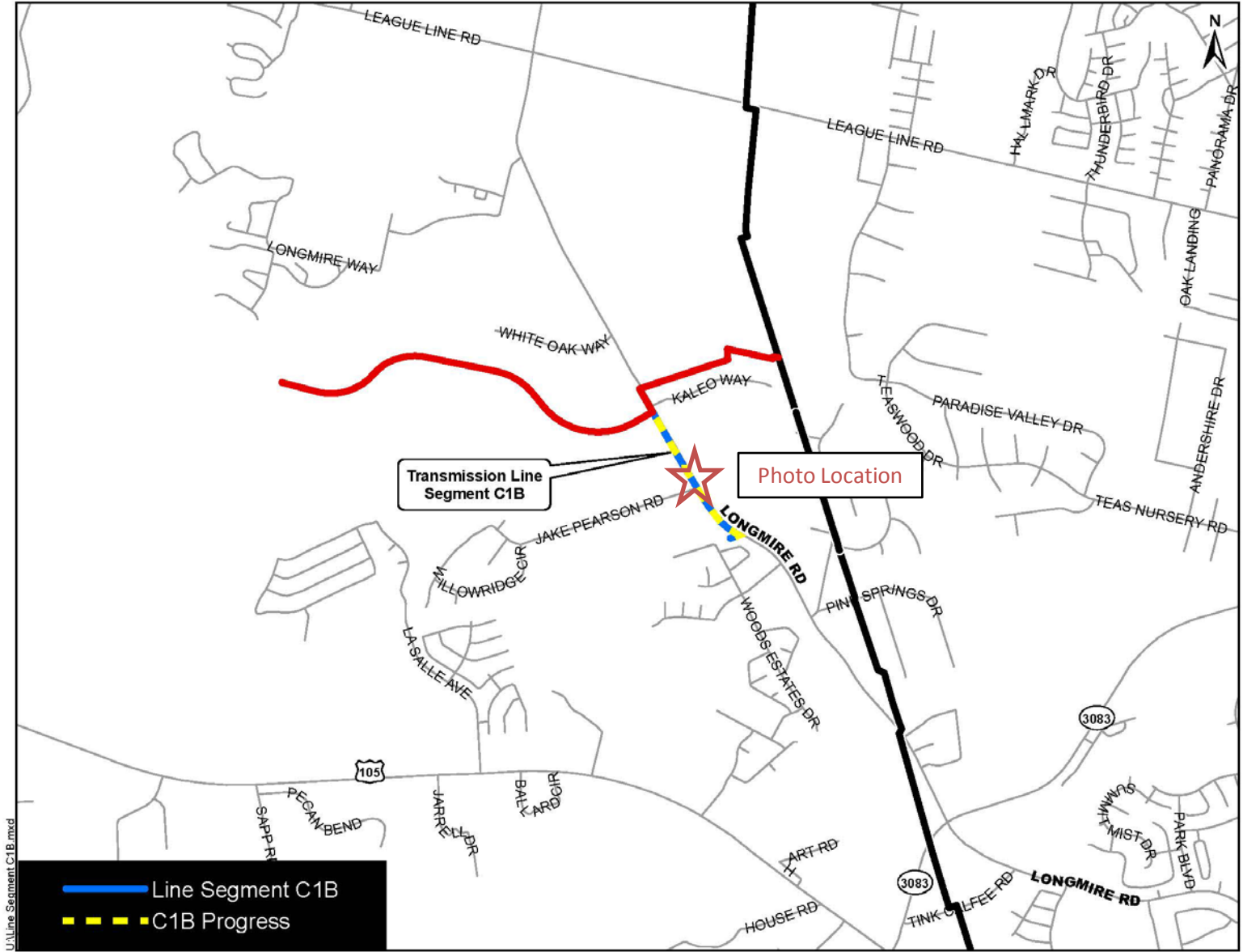
Photo Location



Pipe and Fiber Optic Conduit Installation at Sun Perch Road and Catfish Lane

SURFACE WATER TRANSMISSION SYSTEM "C" ROUTES - PROJECT DATA



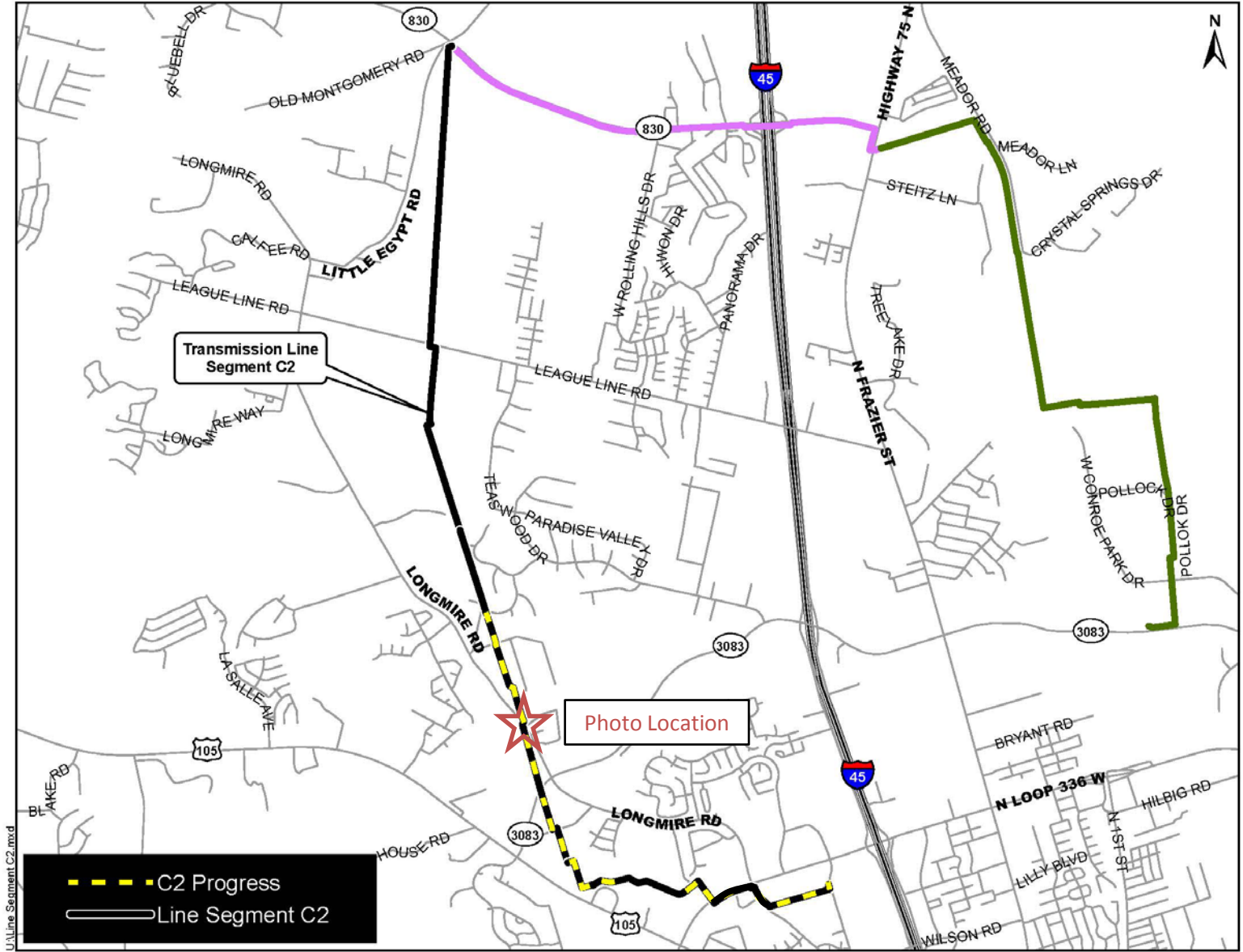


LVLine Segment C1B.mxd

- Line Segment C1B
- C1B Progress



Site Restoration along Longmire Road



Transmission Line Segment C2

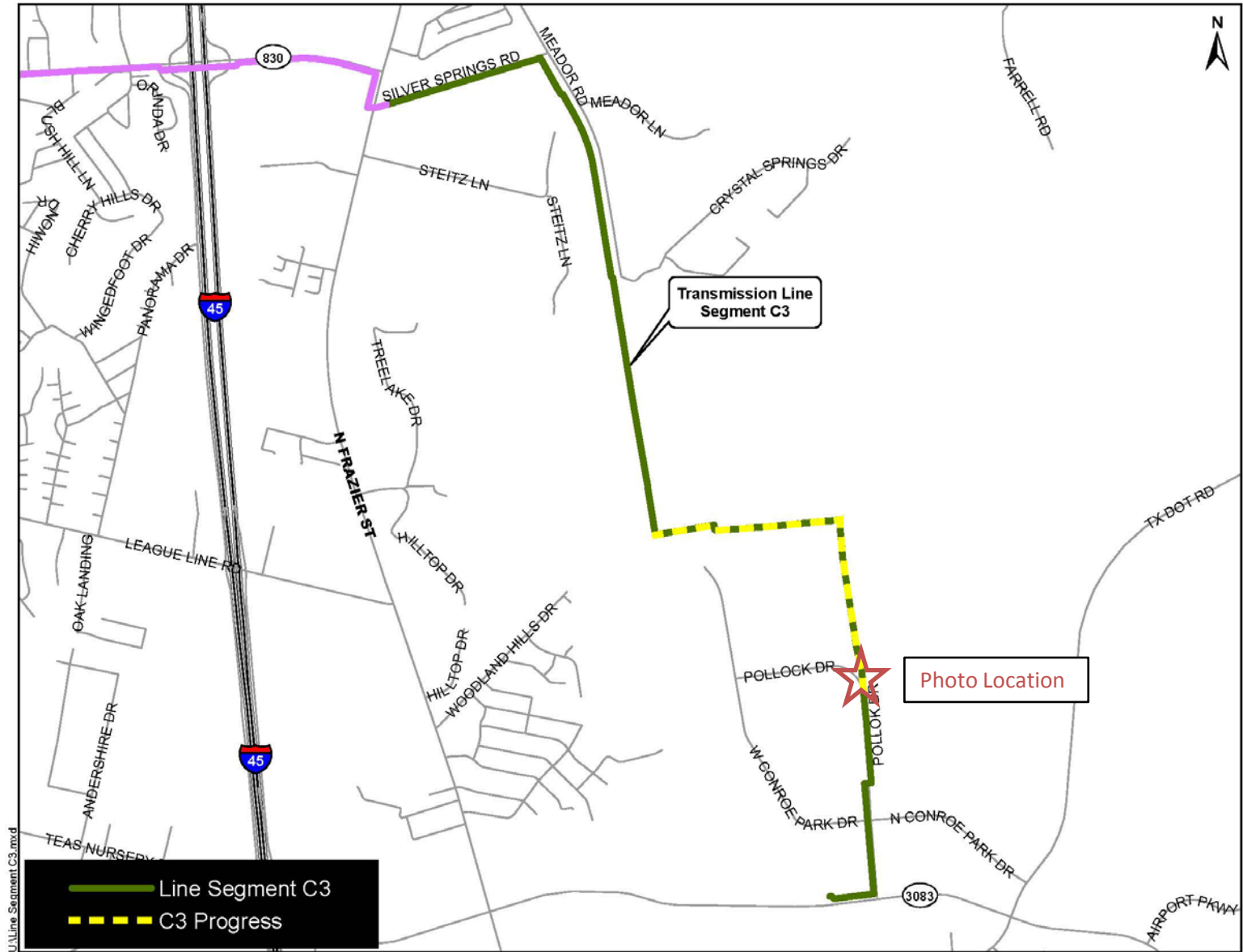
Photo Location

- - - - - C2 Progress
- Line Segment C2

U:\Line Segment C2.mxd



Pipe installation along Entergy easement

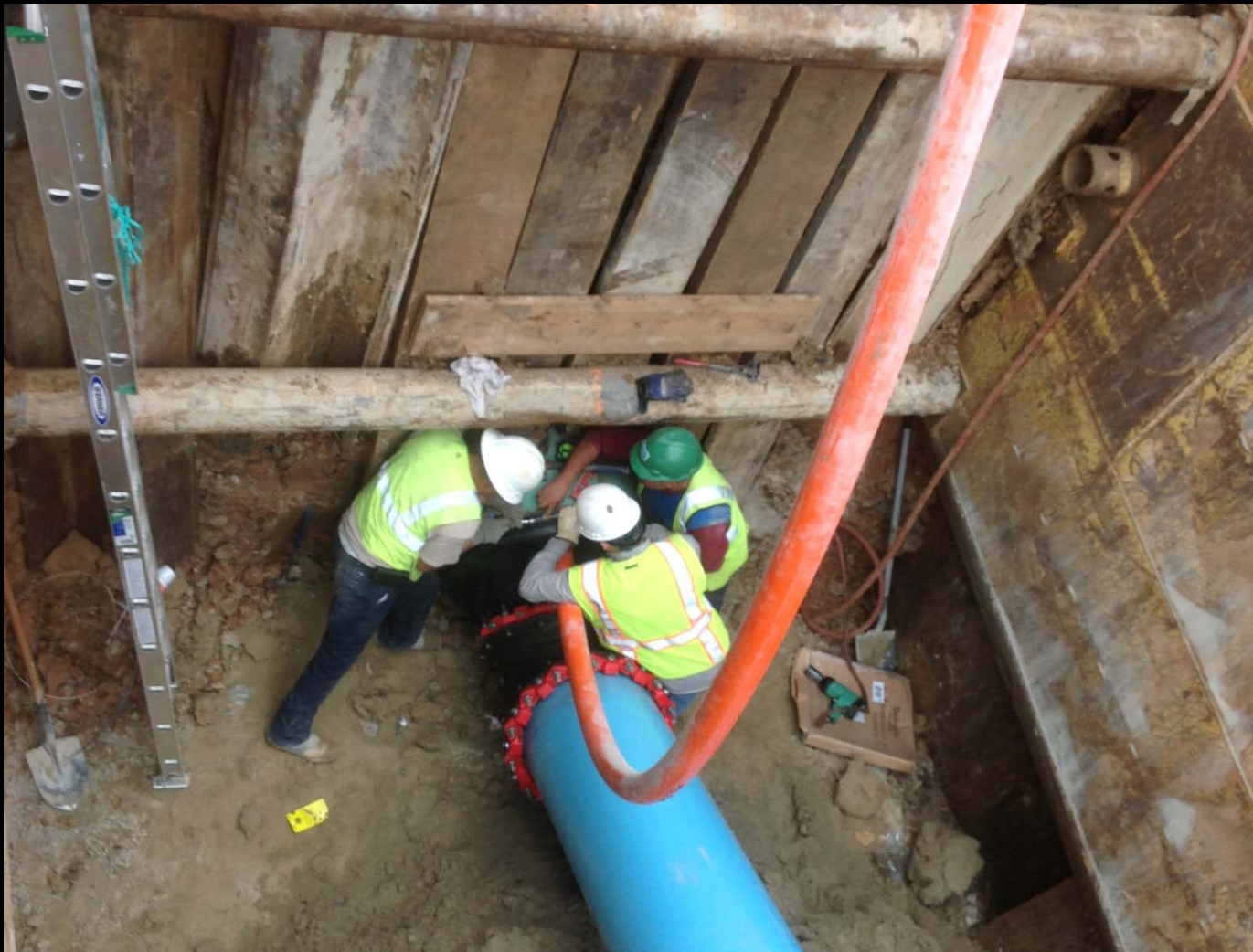


U:\Line Segment C3.mxd

- Line Segment C3
- - - C3 Progress

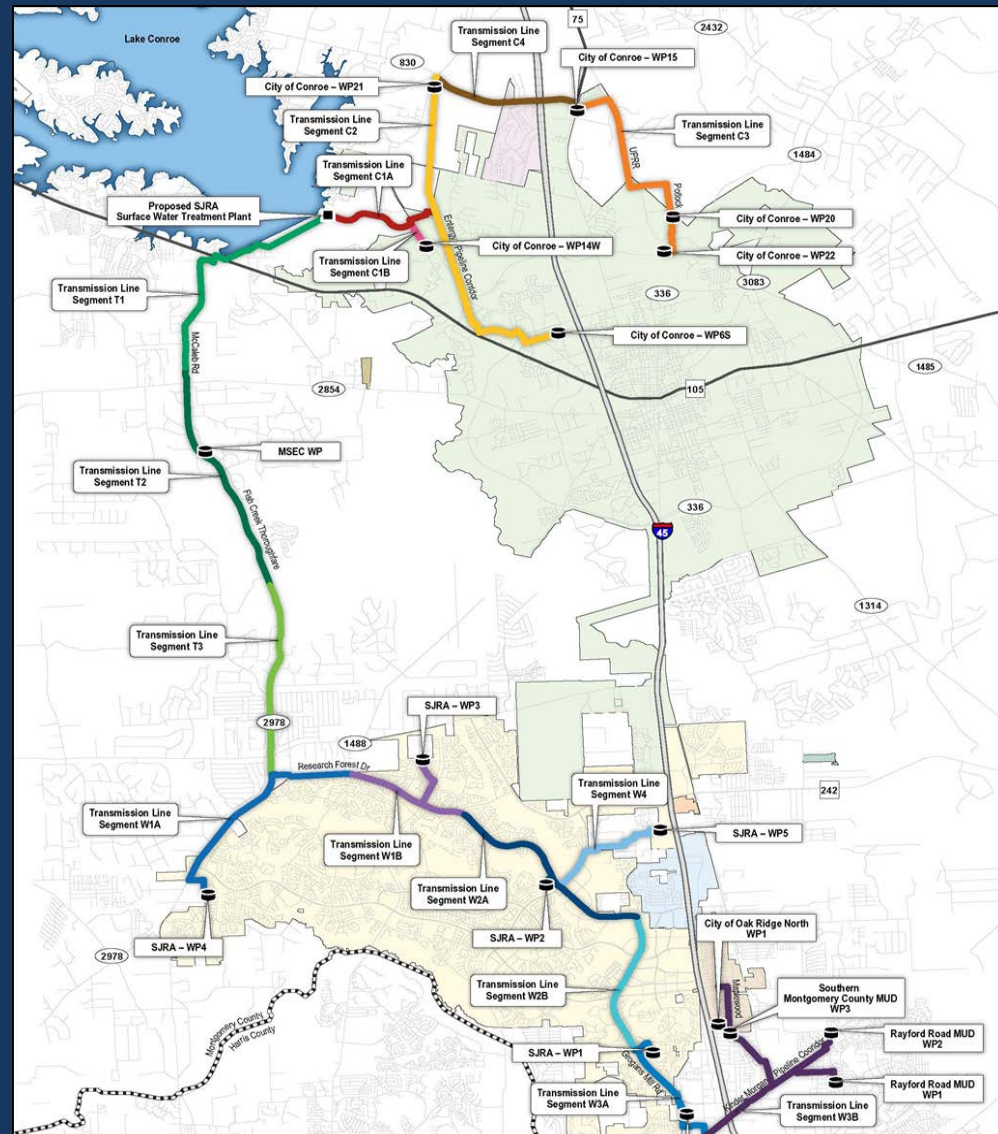
Transmission Line Segment C3

Photo Location

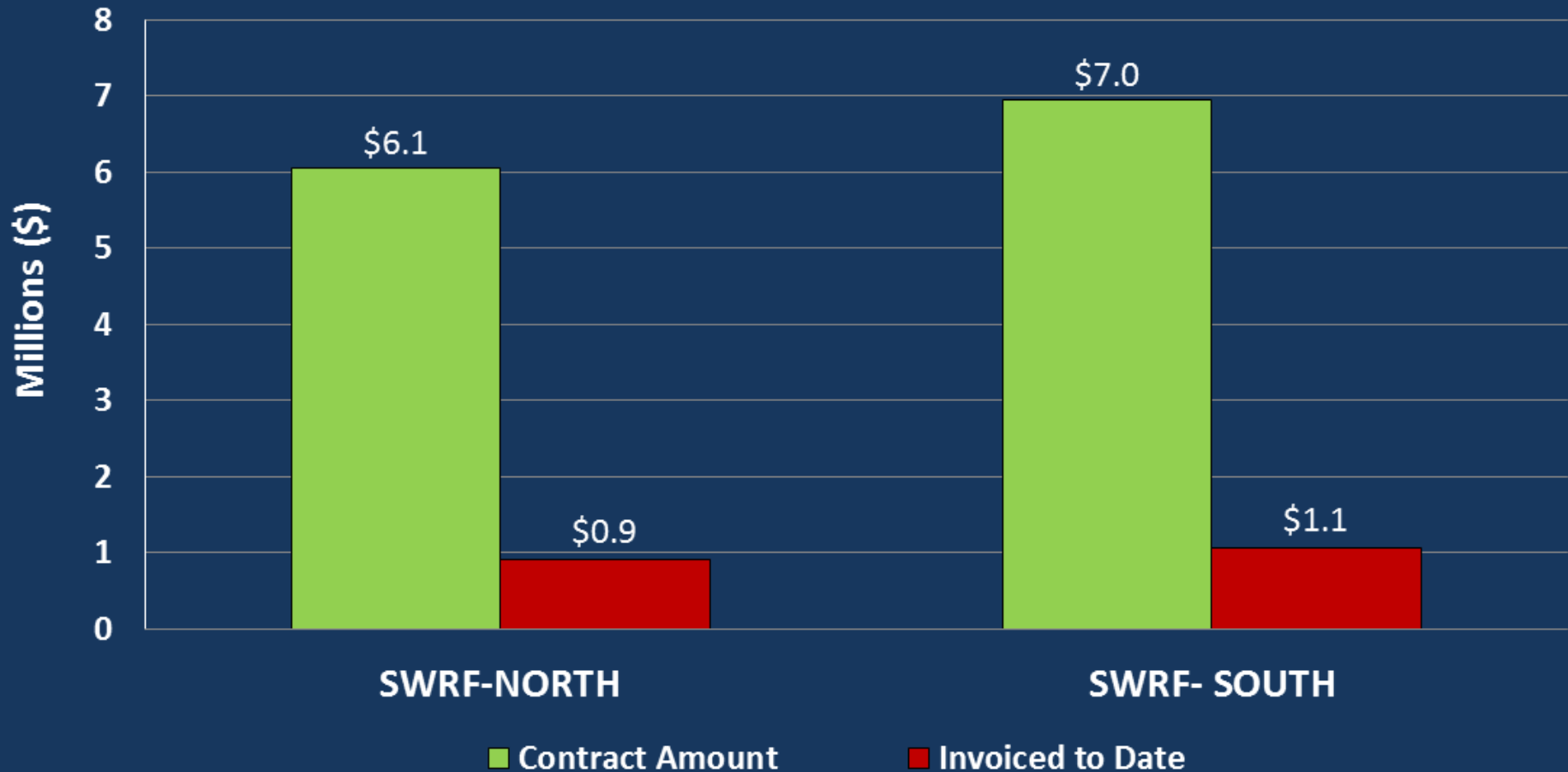


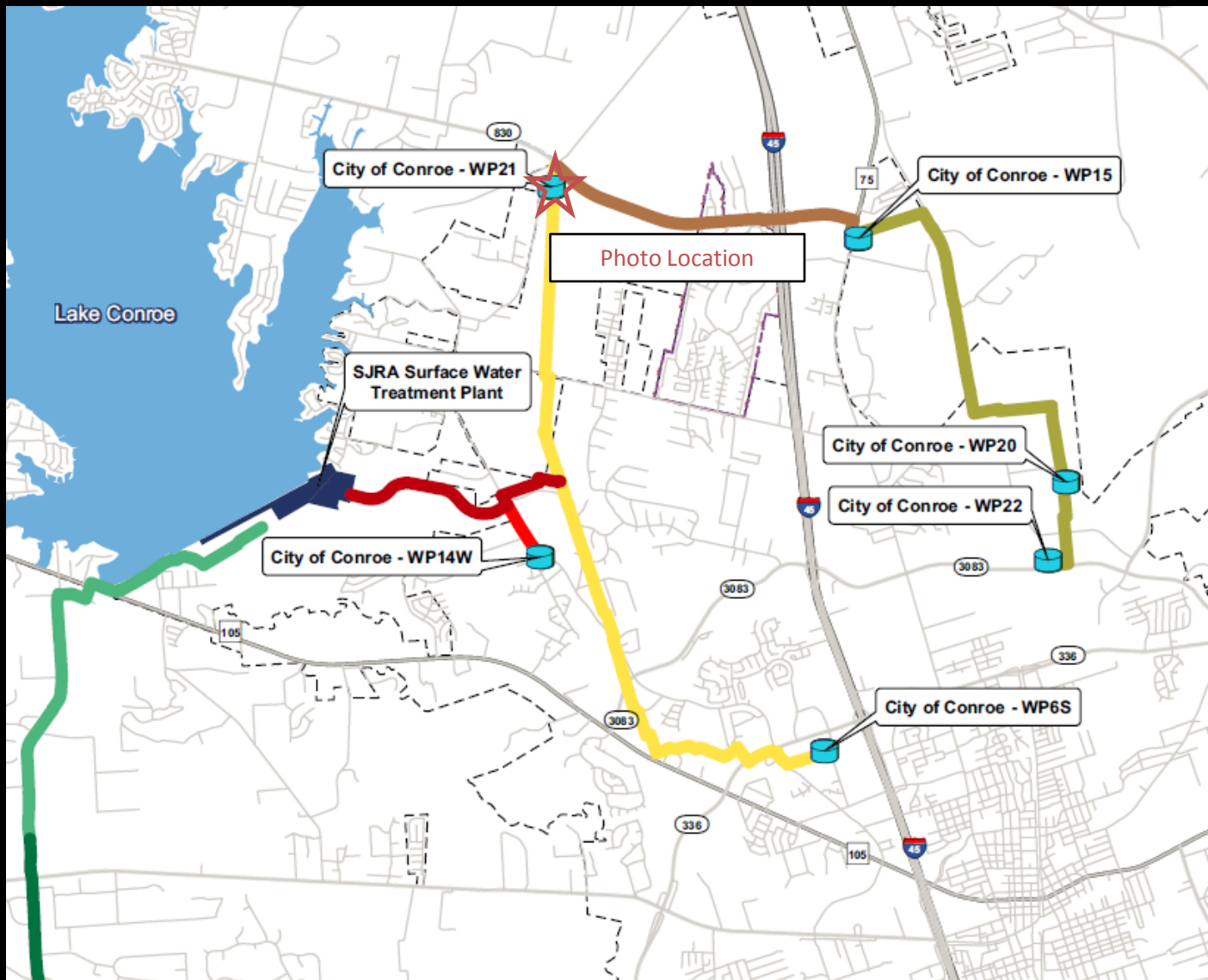
Manhole and 20-inch pipe installation along Pollok Drive

SURFACE WATER RECEIVING FACILITIES CONSTRUCTION PROGRESS



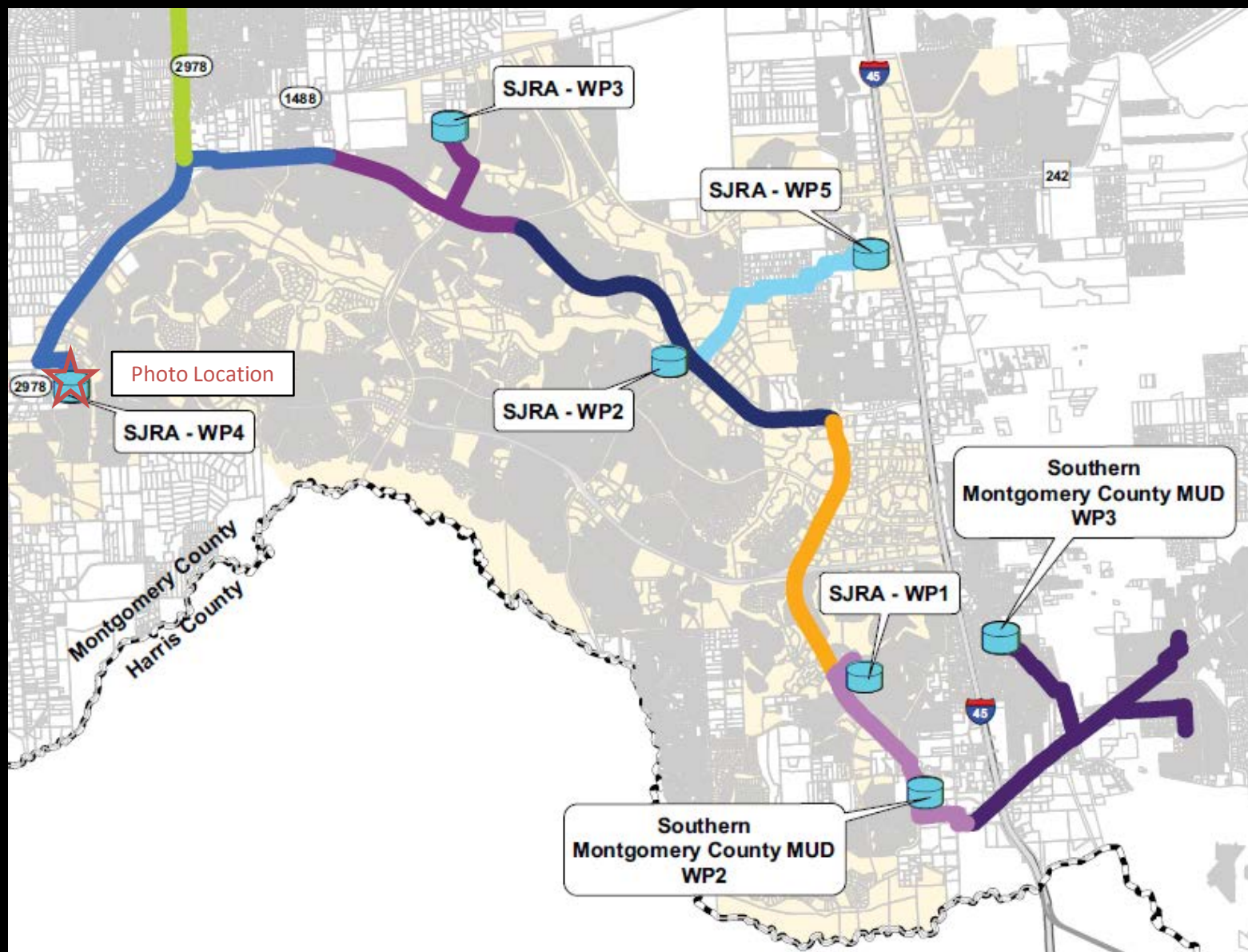
SURFACE WATER TRANSMISSION SYSTEM RECEIVING FACILITIES - PROJECT DATA







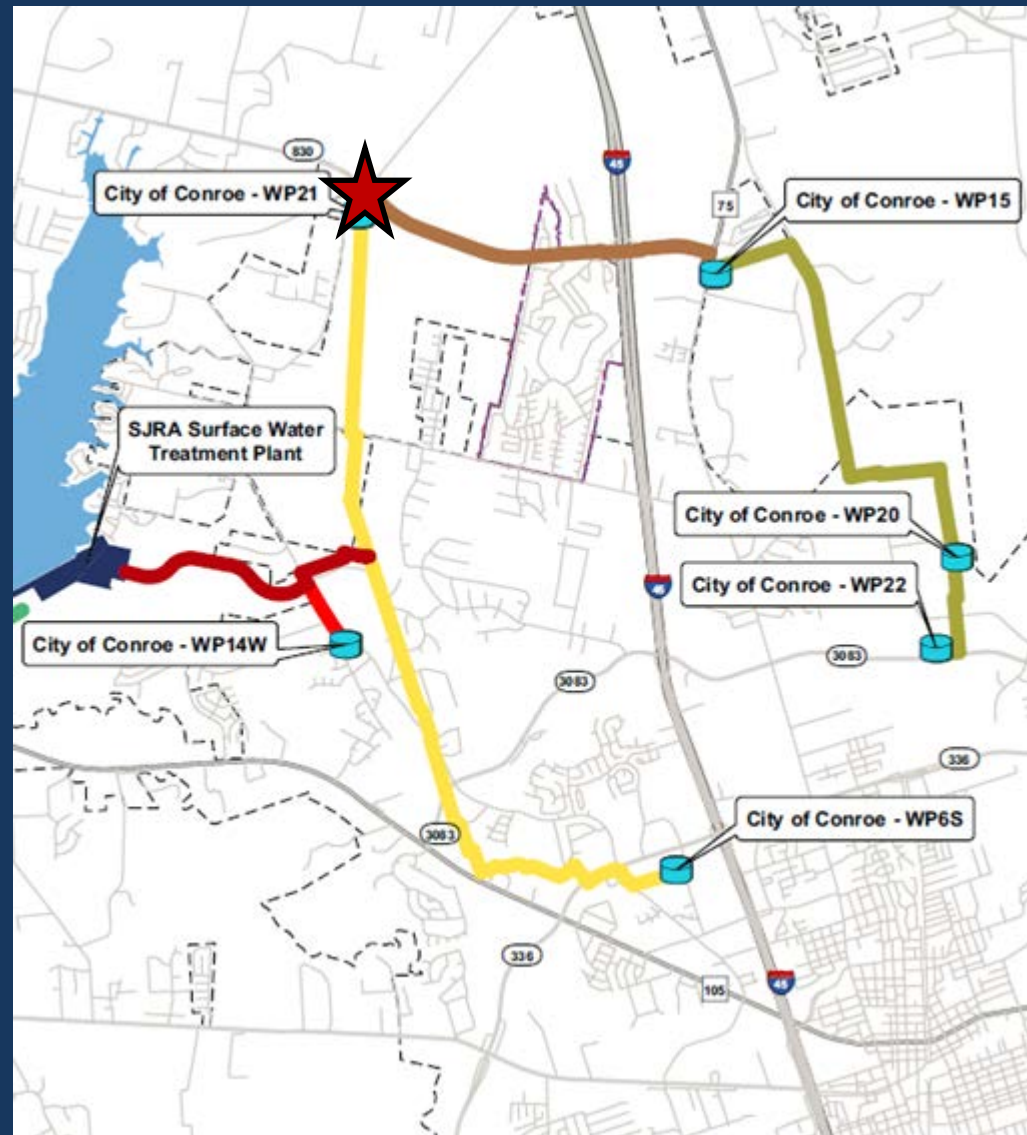
Yard piping installation at Conroe Water Plant No. 21



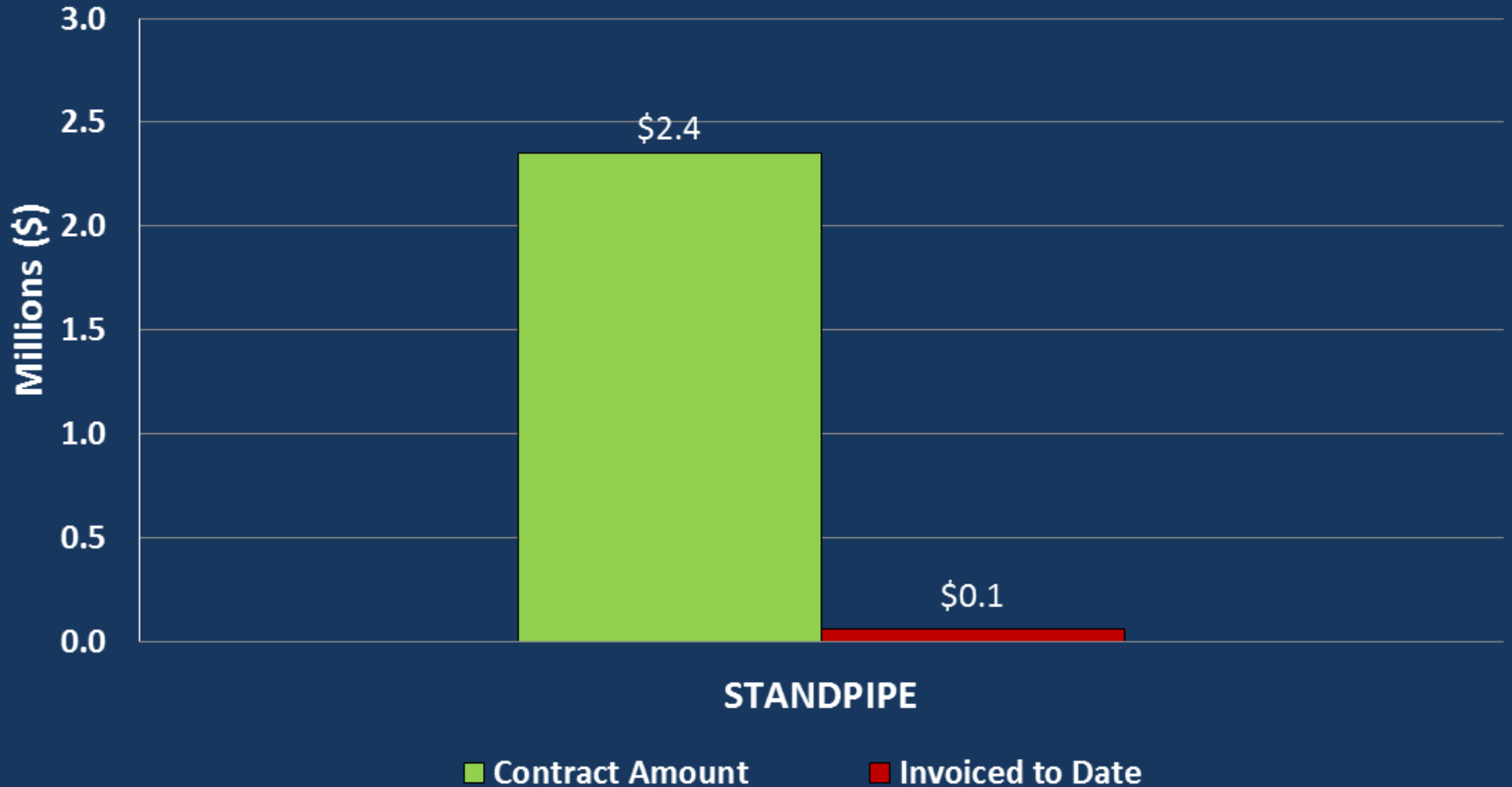


Electrical junction box installation and duct bank excavation at SJRA Water Plant No. 4

SURFACE WATER STANDPIPE CONSTRUCTION PROGRESS



SURFACE WATER TRANSMISSION SYSTEM STANDPIPE - PROJECT DATA





Example Standpipe

SURFACE WATER TRANSMISSION SYSTEM CONSTRUCTION PROGRESS

QUESTIONS?

