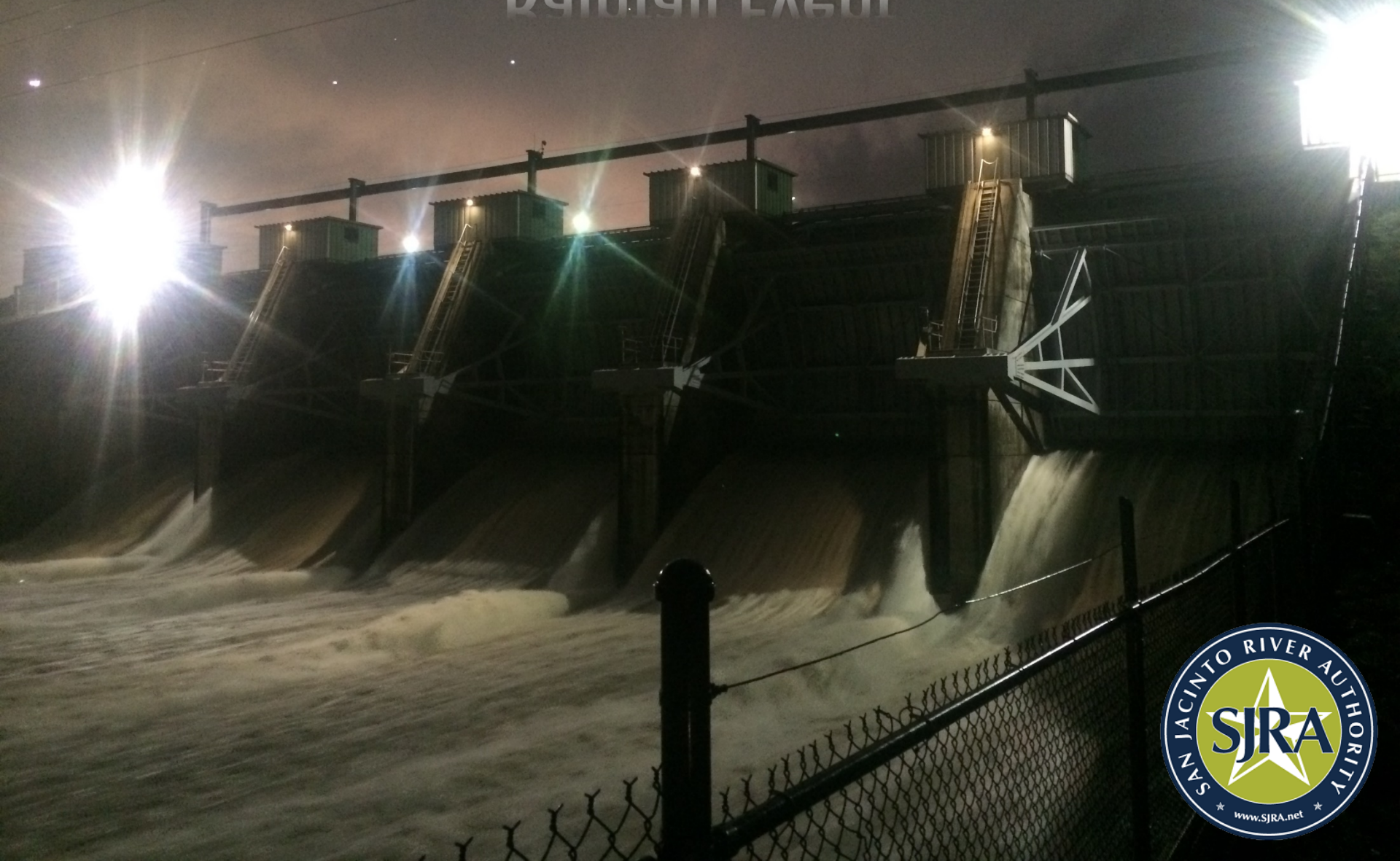
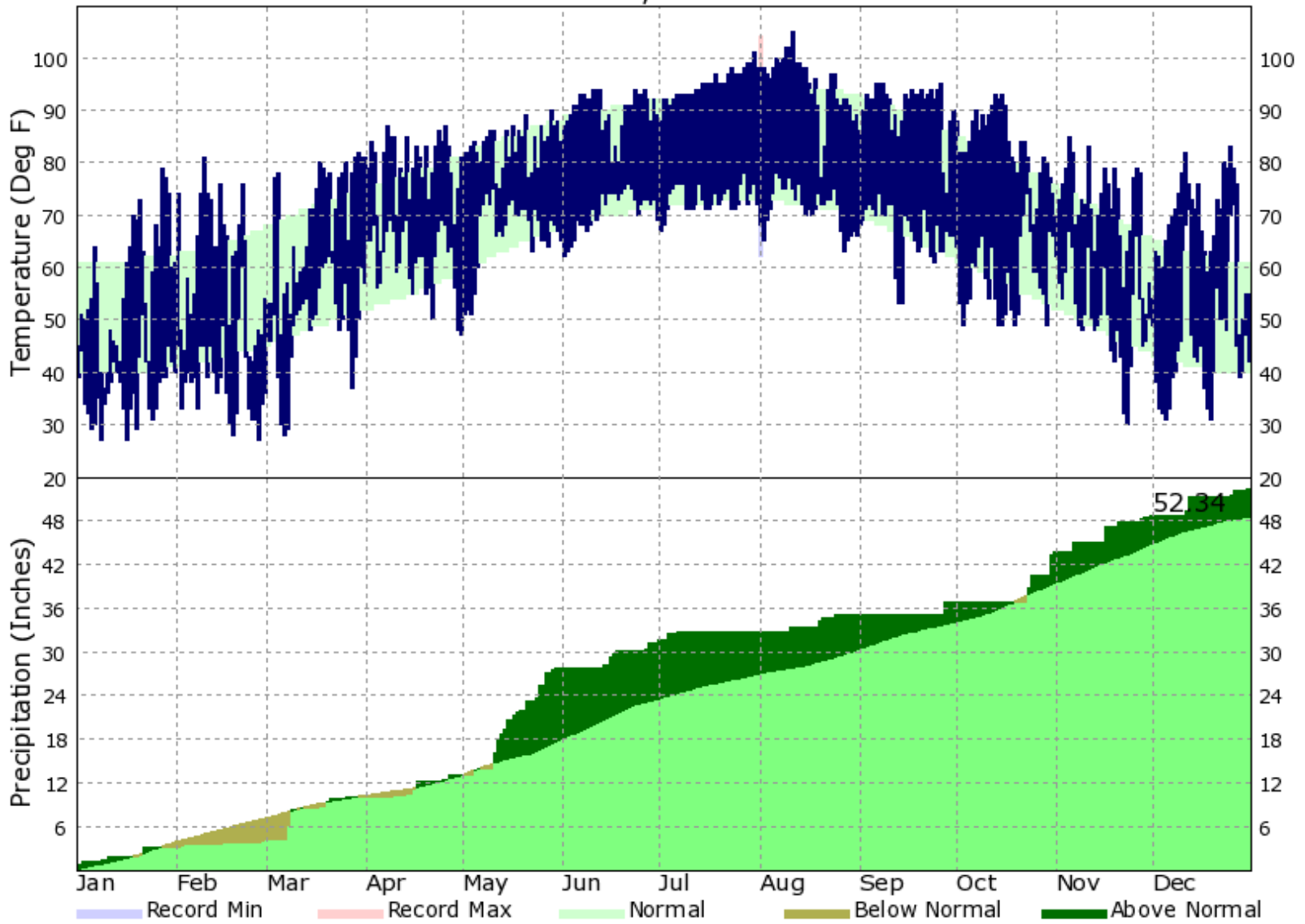


2016 Memorial Day Weekend Rainfall Event

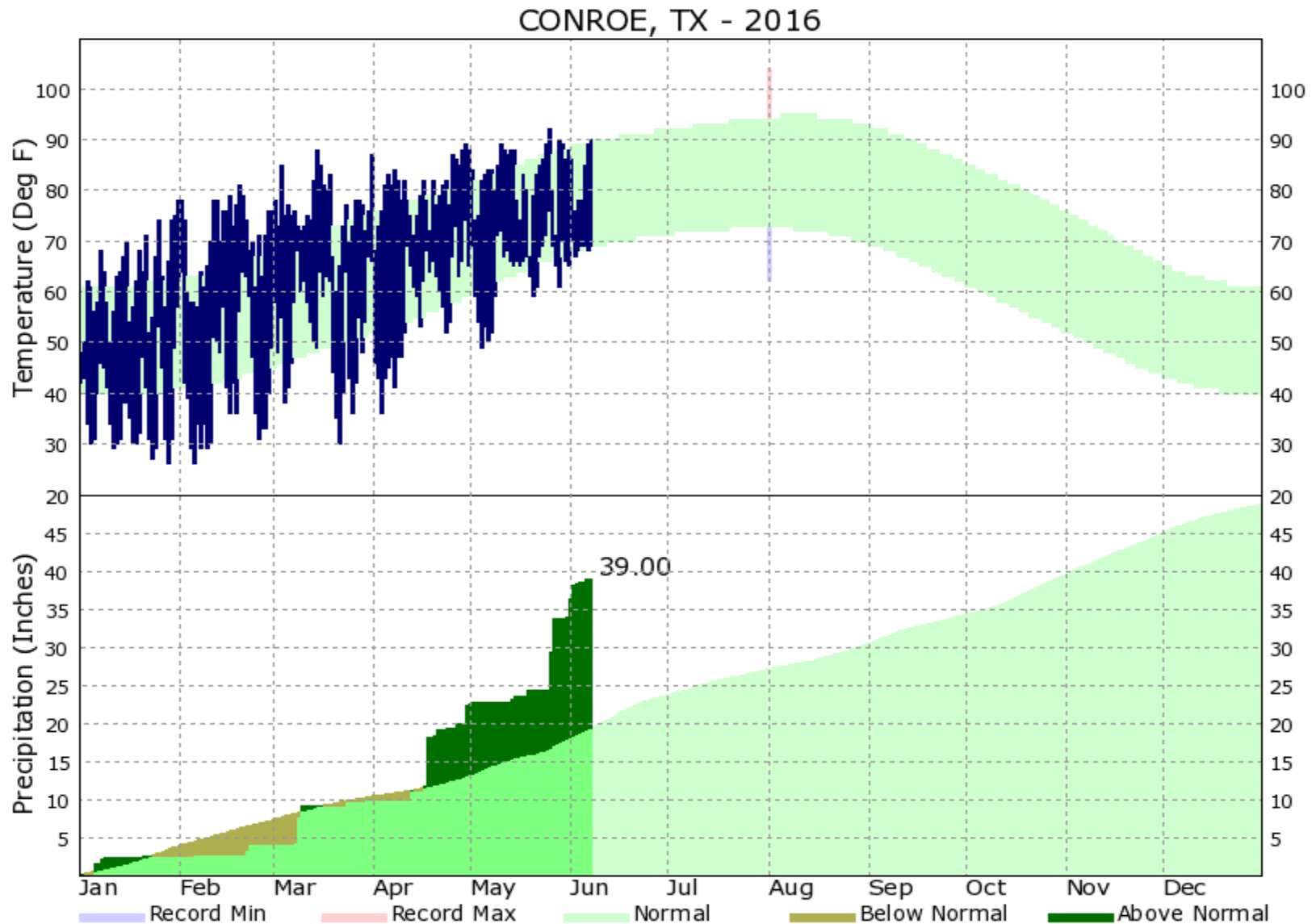


2015 Rainfall vs Average

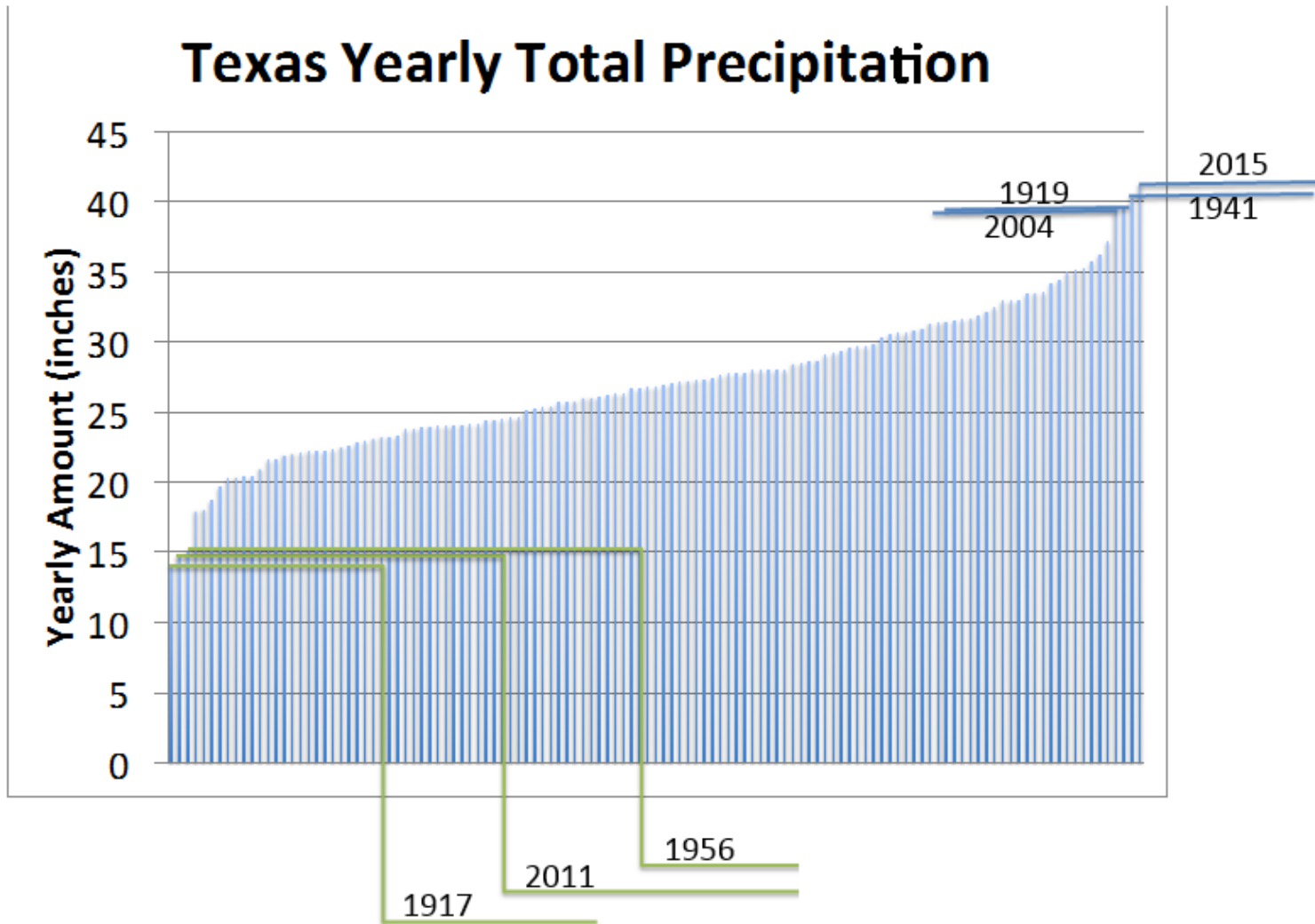
CONROE, TX - 2015



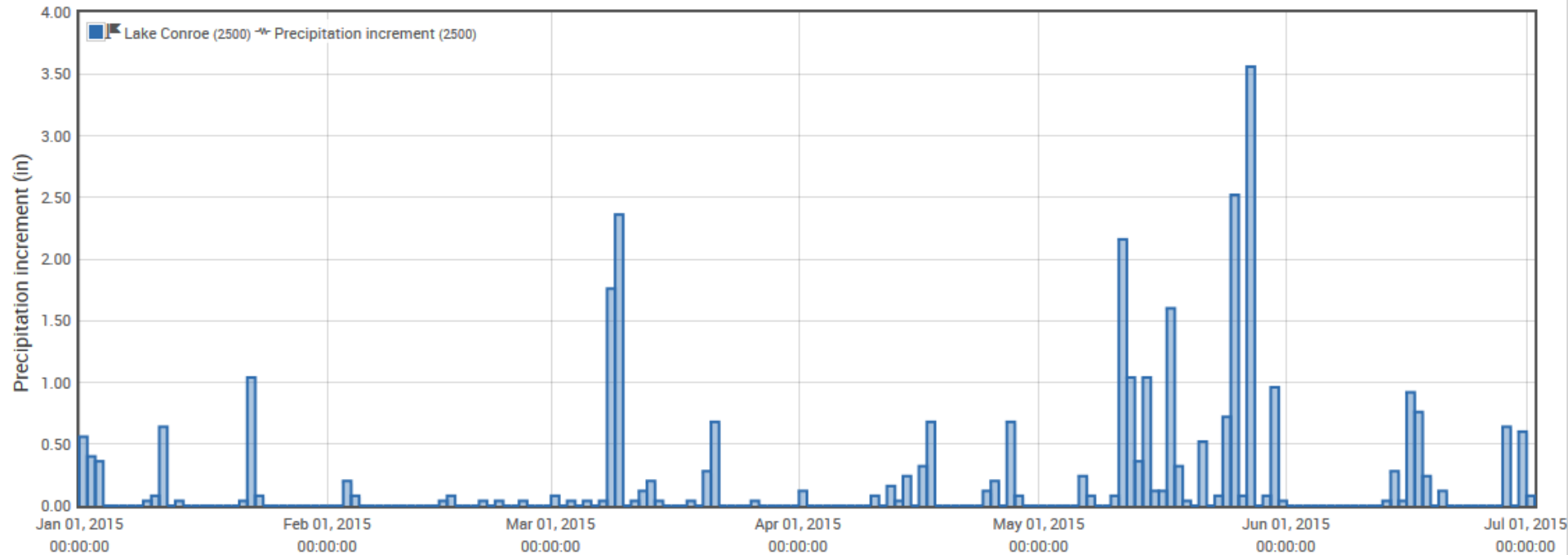
2016 Rainfall vs Average



Rainfall Records

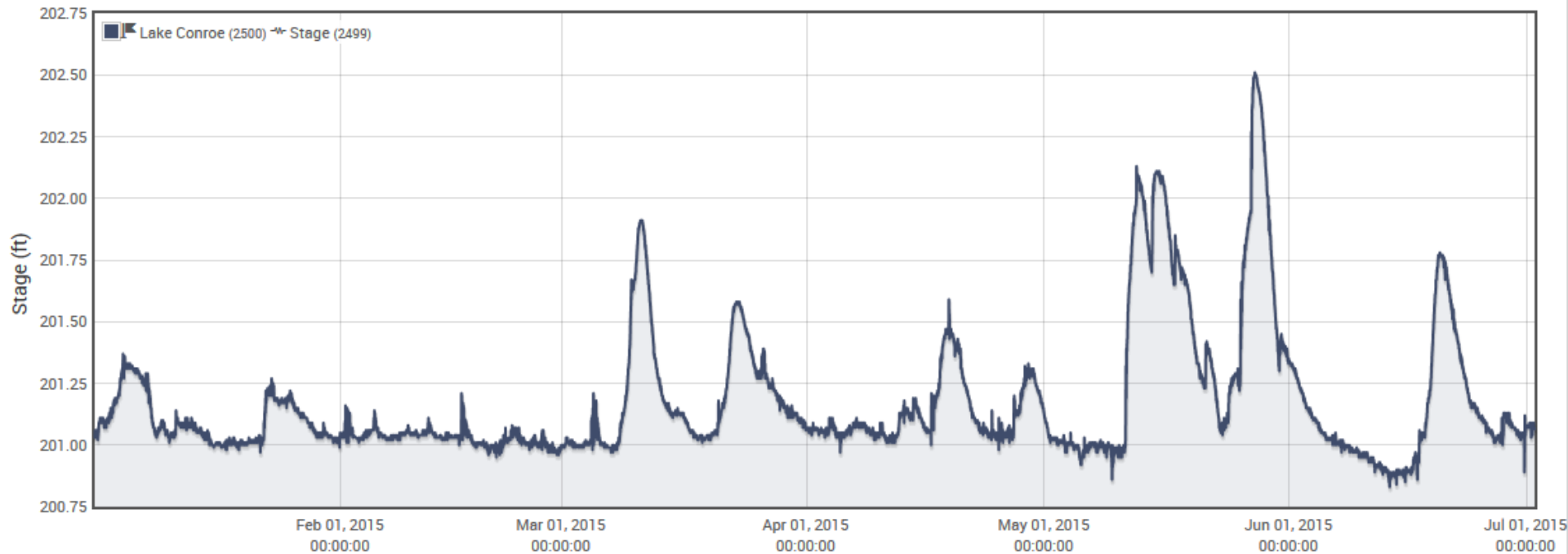


2015 Rainfall – First Six Months



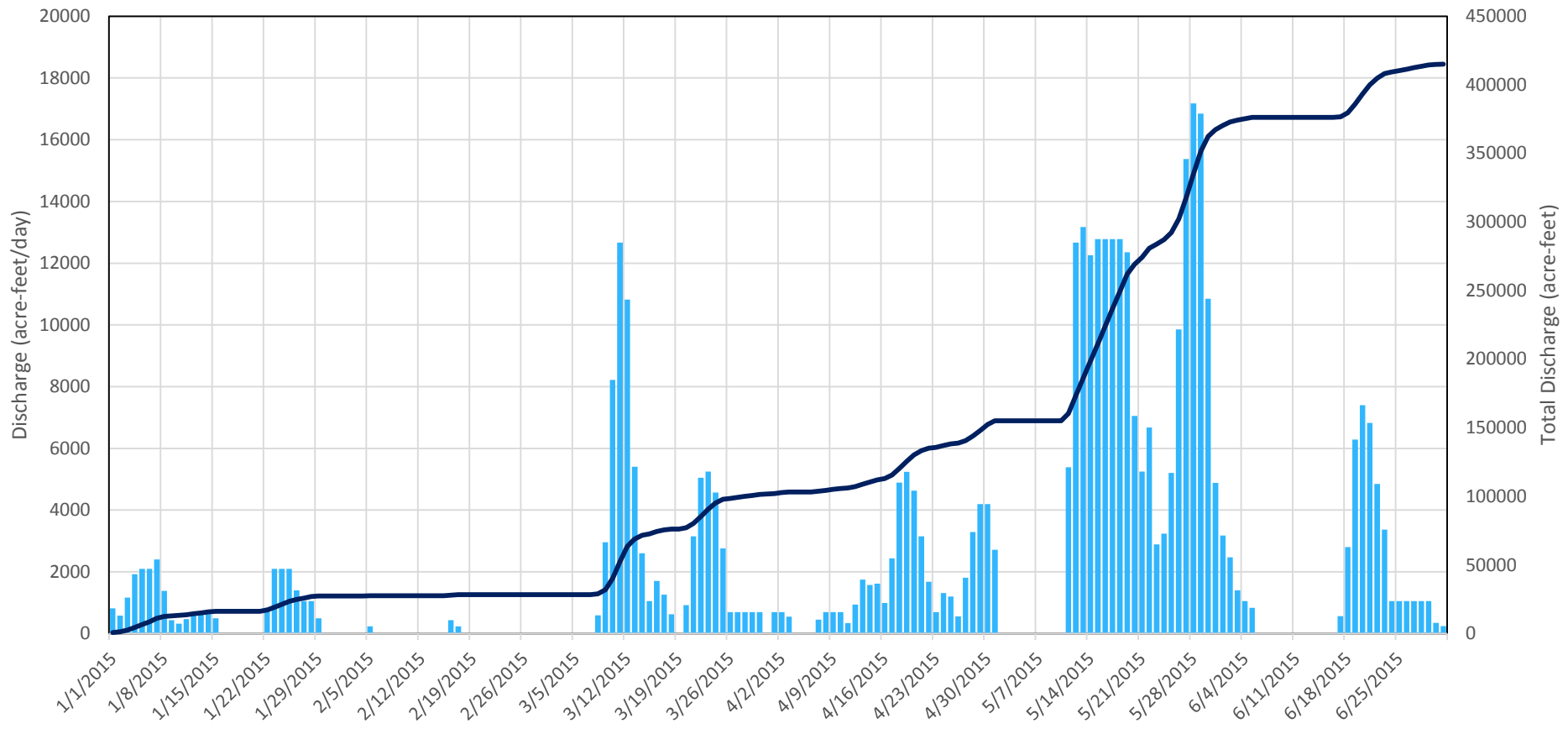
**Lake Conroe Rainfall Totals
January 1 – July 1, 2015**

2015 Lake Level – First Six Months



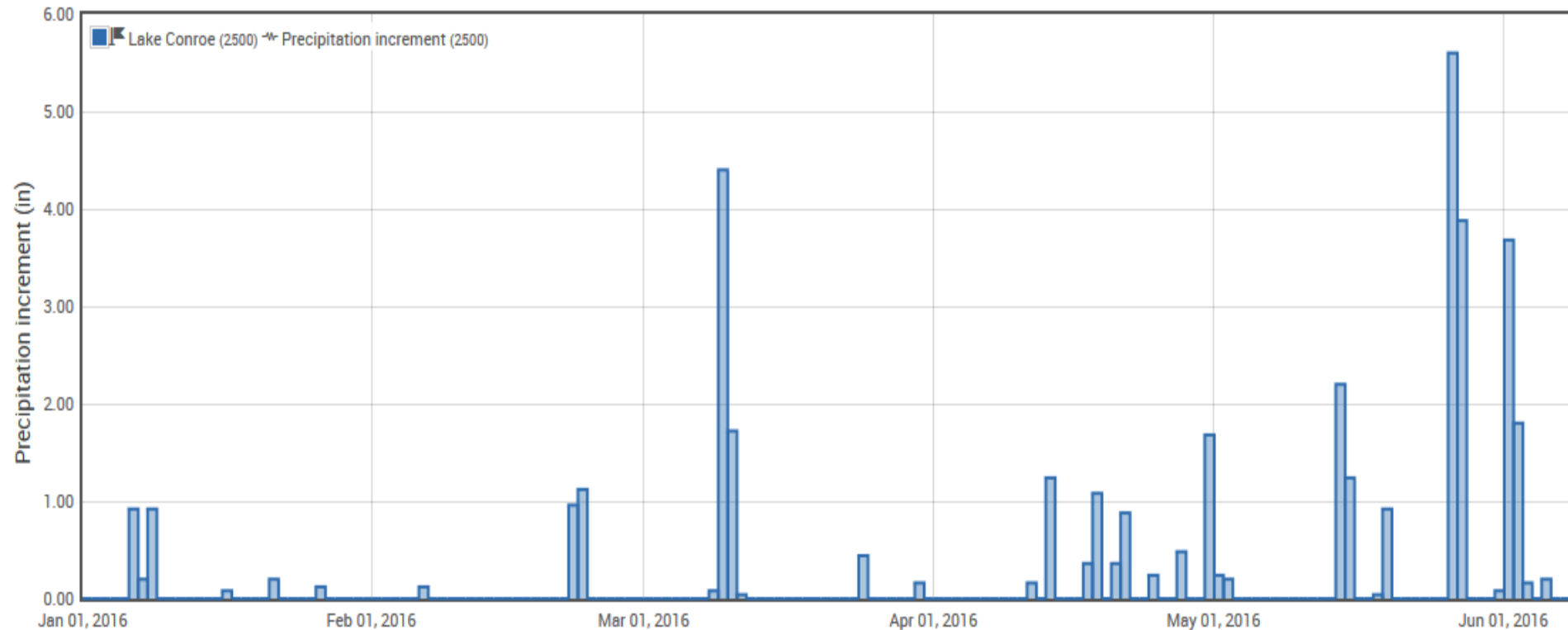
**Lake Conroe Stage
January 1 – July 1, 2015**

2015 Discharge – First Six Months



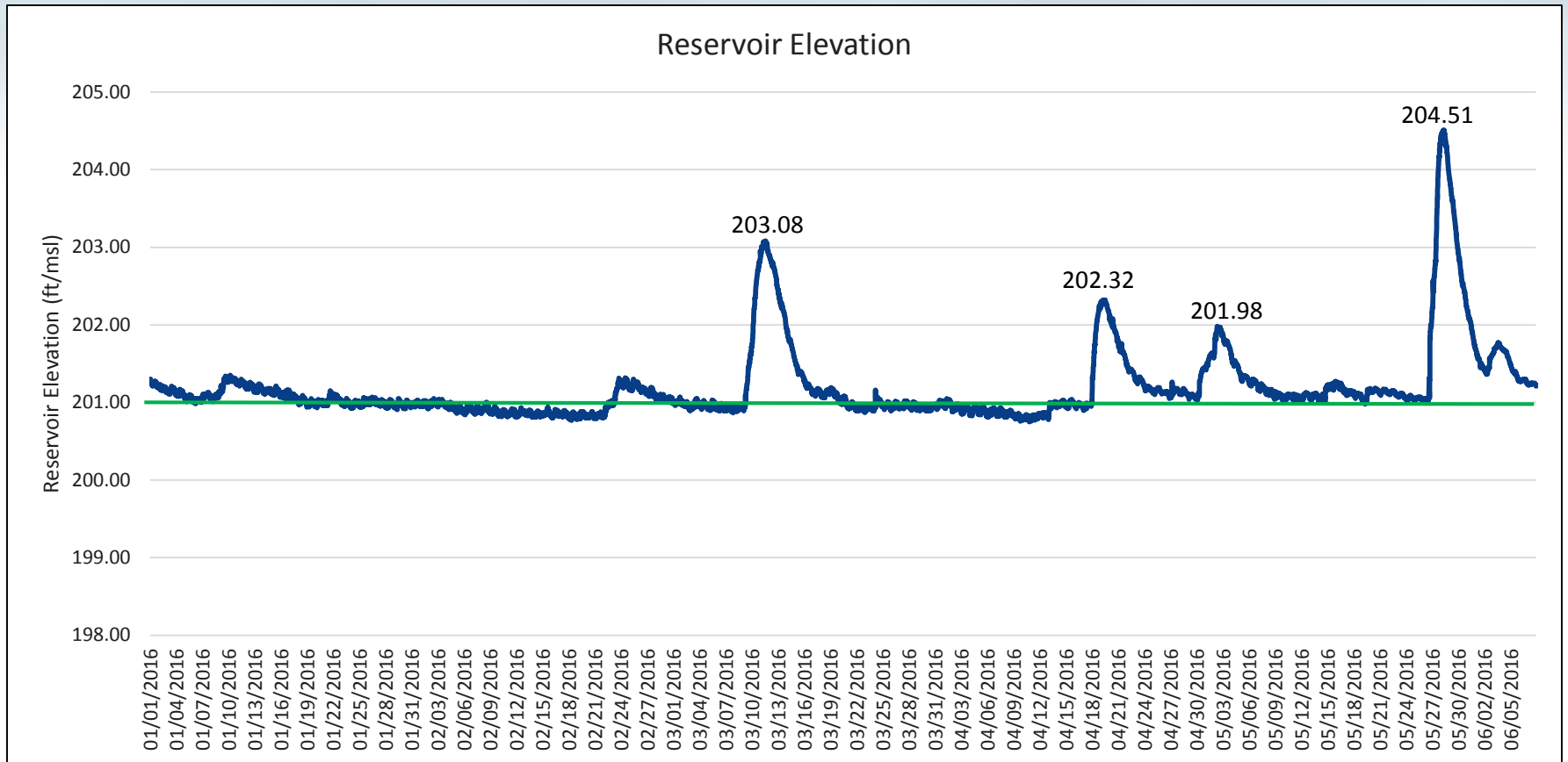
**Lake Conroe Stage
January 1 – July 1, 2015**

2016 Rainfall – First Six Months



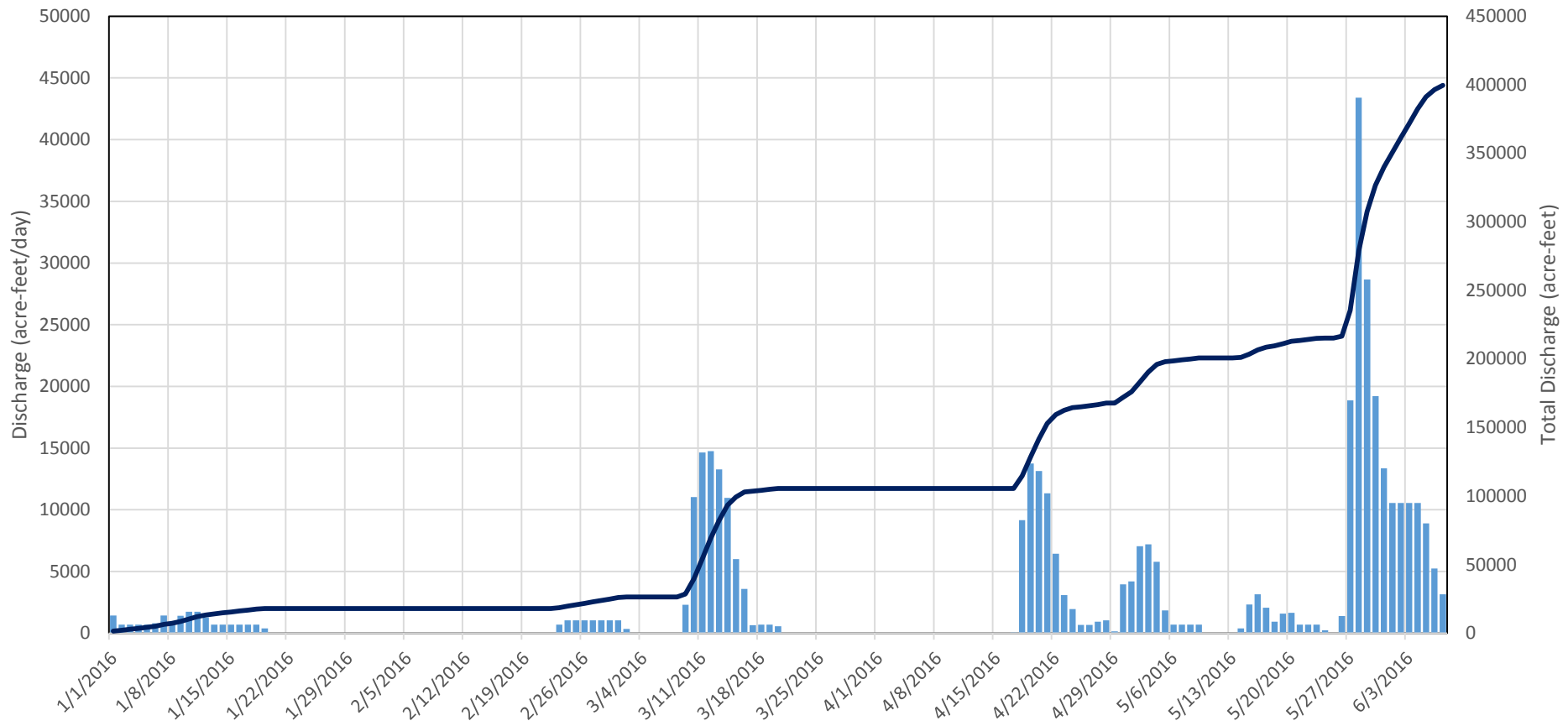
**Lake Conroe Rainfall Totals
January 1 – June 7, 2016**

2016 Lake Level – First Six Months



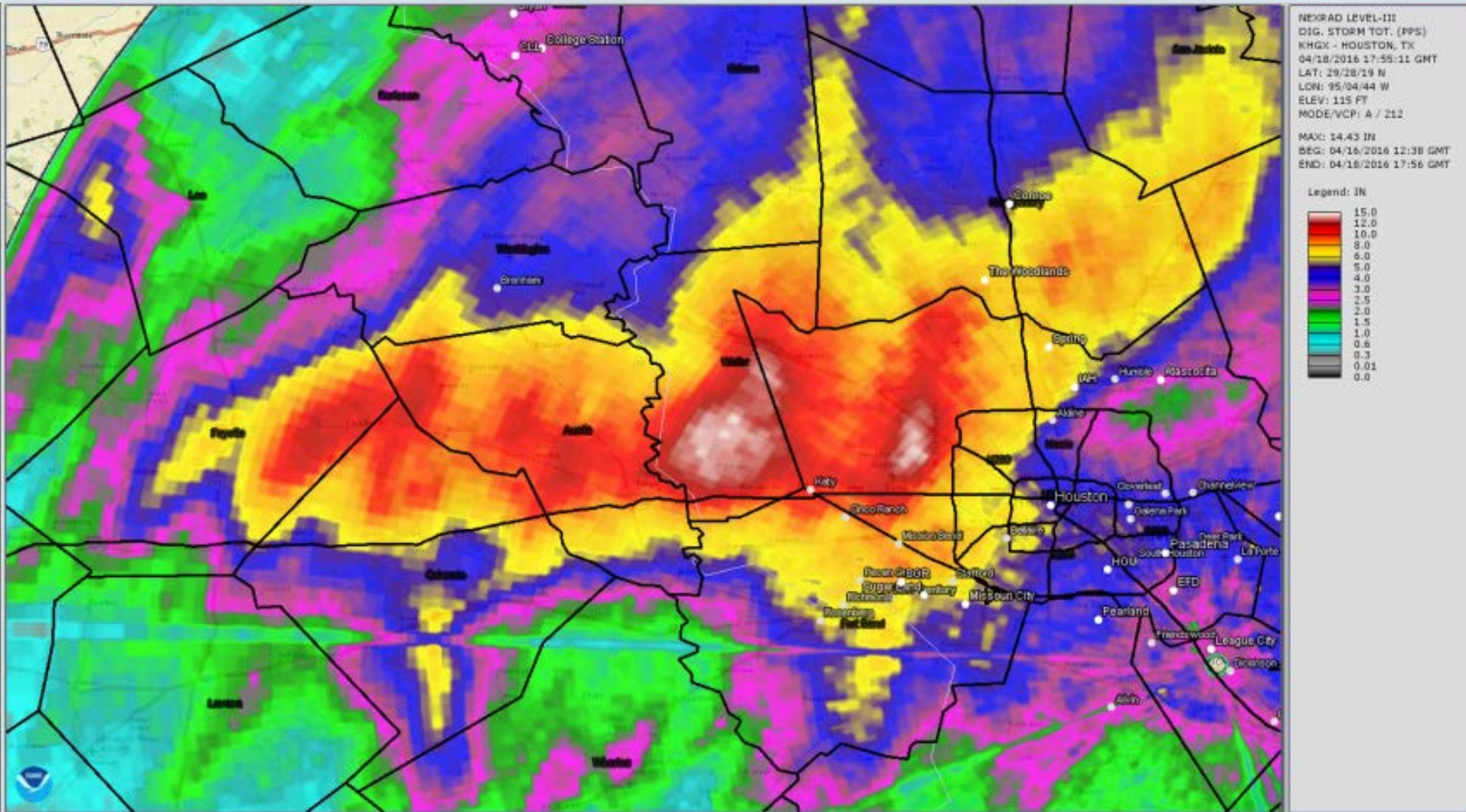
Lake Conroe Stage
January 1 – June 7, 2016

2016 Discharge – First Six Months

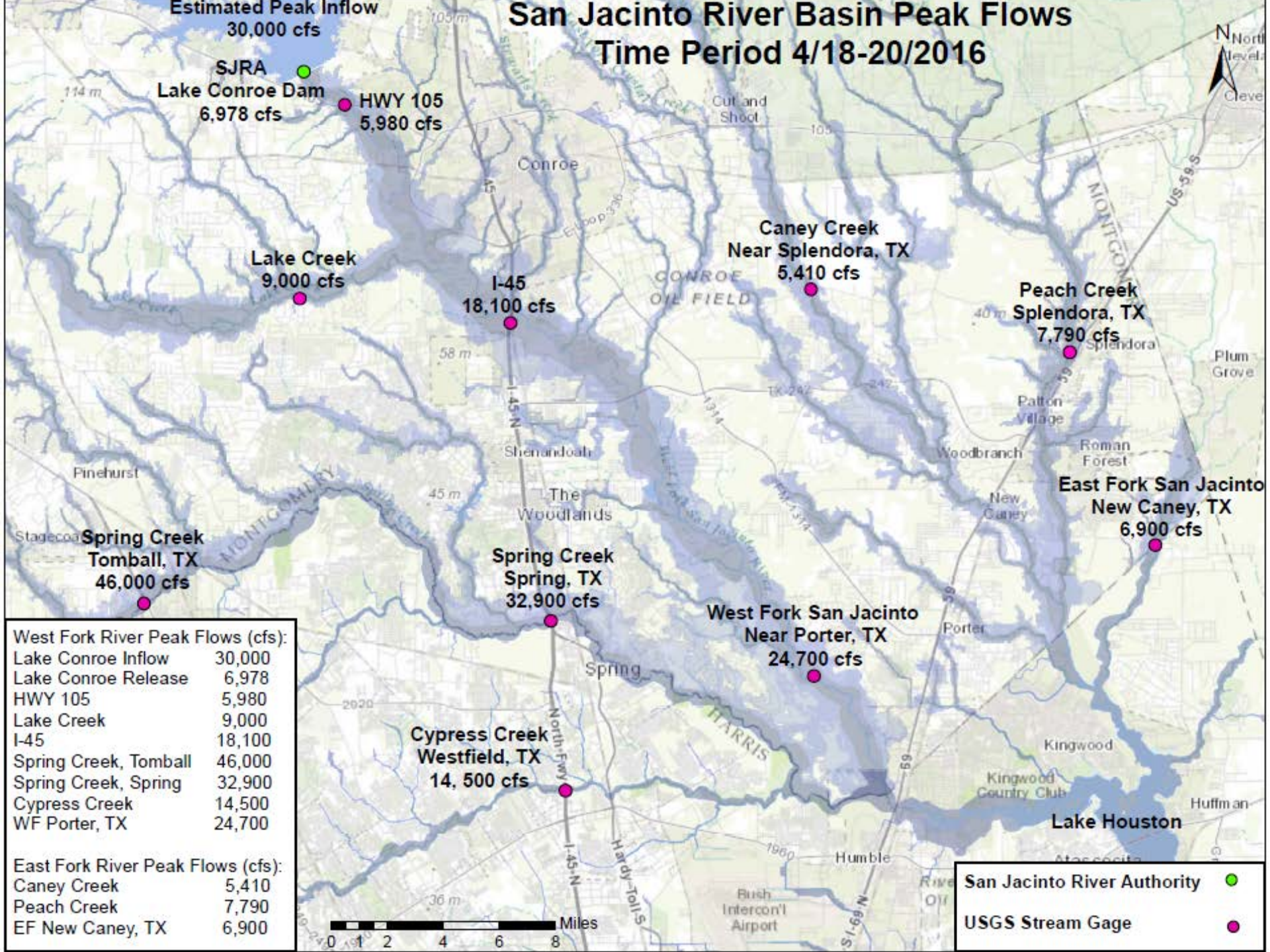


**Lake Conroe Discharge
January 1 – June 7, 2016**

Tax Day 2016 Rainfall Event



San Jacinto River Basin Peak Flows Time Period 4/18-20/2016



Estimated Peak Inflow
30,000 cfs

SJRA
Lake Conroe Dam
6,978 cfs

HWY 105
5,980 cfs

Lake Creek
9,000 cfs

I-45
18,100 cfs

Caney Creek
Near Splendor, TX
5,410 cfs

Peach Creek
Splendor, TX
7,790 cfs

Spring Creek
Tomball, TX
46,000 cfs

Spring Creek
Spring, TX
32,900 cfs

West Fork San Jacinto
Near Porter, TX
24,700 cfs

East Fork San Jacinto
New Caney, TX
6,900 cfs

Cypress Creek
Westfield, TX
14,500 cfs

West Fork River Peak Flows (cfs):

Lake Conroe Inflow	30,000
Lake Conroe Release	6,978
HWY 105	5,980
Lake Creek	9,000
I-45	18,100
Spring Creek, Tomball	46,000
Spring Creek, Spring	32,900
Cypress Creek	14,500
WF Porter, TX	24,700

East Fork River Peak Flows (cfs):

Caney Creek	5,410
Peach Creek	7,790
EF New Caney, TX	6,900

San Jacinto River Authority ●

USGS Stream Gage ●



Memorial Day 2016 Rainfall Event



National Weather Service National Headquarters

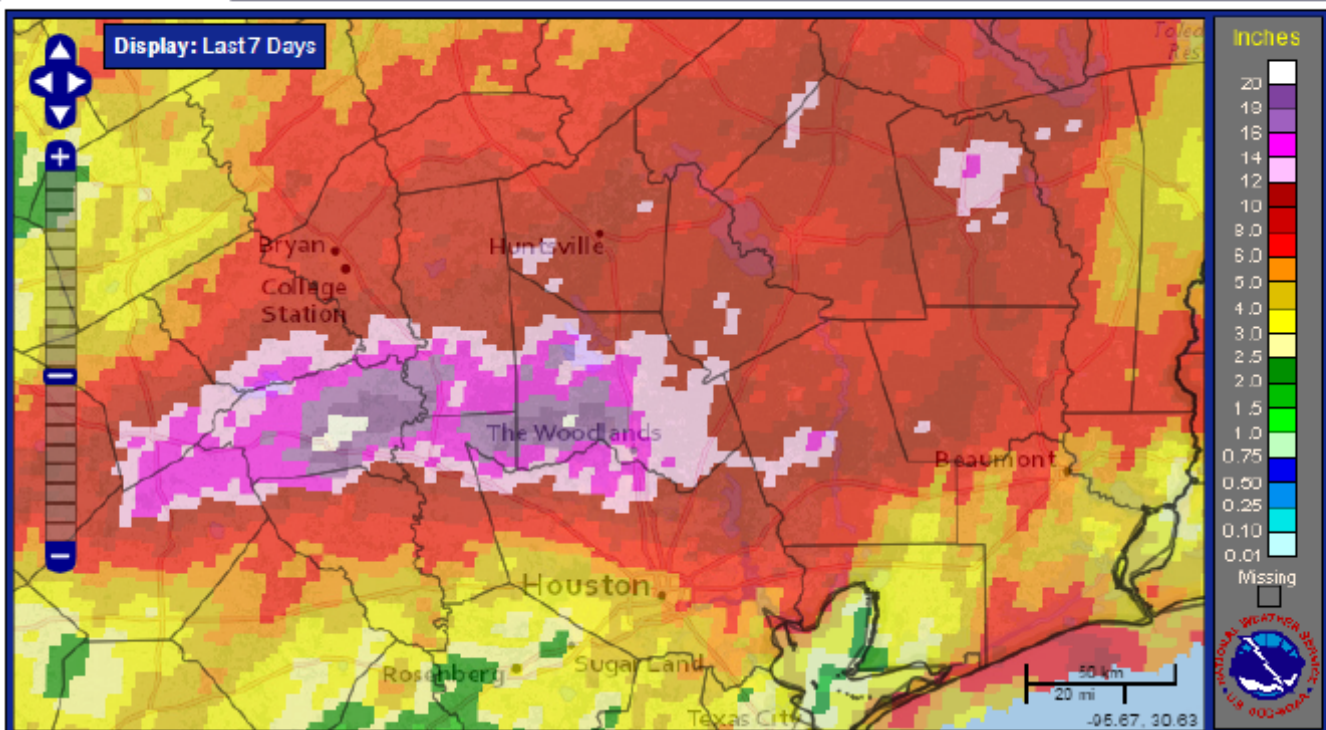
National Weather Service

weather.gov



[Home](#) [Site Map](#) [News](#) [Organization](#)

[Precipitation Map](#) [Download Shapefiles](#) [About this Page](#) [Other Useful Information](#) [Survey & Feedback](#)



Overlays:

- States
- Counties
- River Basins
- River Forecast Center Boundaries

Precipitation Opacity:

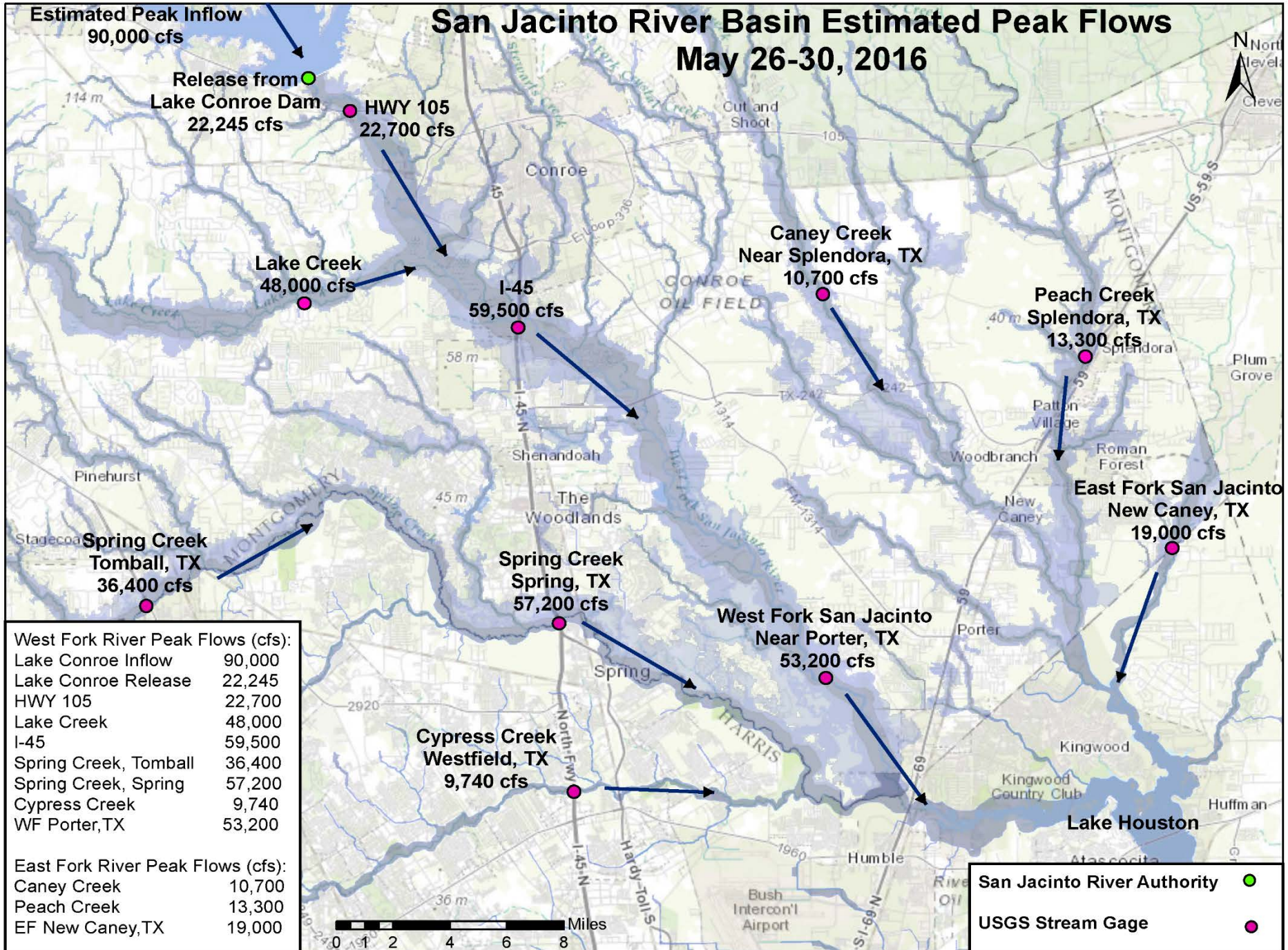


Image Last Updated: 06/02/2016 14:50UTC

Image Valid:

05/26/2016 14:00 UTC to
06/02/2016 14:00 UTC

San Jacinto River Basin Estimated Peak Flows May 26-30, 2016



West Fork River Peak Flows (cfs):

Lake Conroe Inflow	90,000
Lake Conroe Release	22,245
HWY 105	22,700
Lake Creek	48,000
I-45	59,500
Spring Creek, Tomball	36,400
Spring Creek, Spring	57,200
Cypress Creek	9,740
WF Porter, TX	53,200

East Fork River Peak Flows (cfs):

Caney Creek	10,700
Peach Creek	13,300
EF New Caney, TX	19,000

San Jacinto River Authority ●

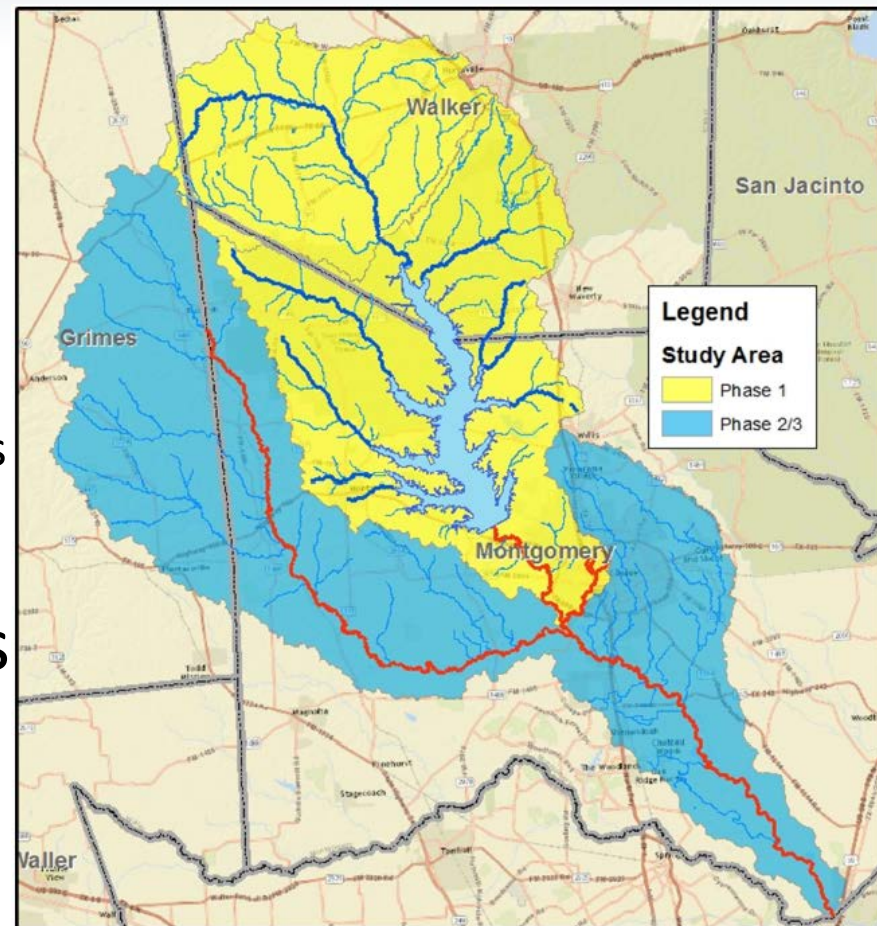
USGS Stream Gage ●

TWDB Flood Protection Grant

- \$2 million made available by Texas Legislature
- Two distinct programs
 - Flood protection planning
 - Flood early warning systems
- Partners – SJRA, City of Conroe, Montgomery County

TWDB Flood Protection Grant

- Regional benefit, but completed in phases
- Flood protection planning
 - Update topography
 - Update rainfall-runoff models
 - Update streamflow models
 - Improve floodplain information
 - Identify potential mitigation strategies
- Flood early warning systems
 - Upgrade existing SJRA ALERT system
 - Develop plan for expansion of system





Thank you!

